

1205 CARRY-ALL

Because dirt is never in the right place.

When it comes to moving dirt from one area to another, nothing beats the performance of the Model 1205 Carry-All. Equipped with a 12-foot cutting blade, the 1205 can quickly load up to 5.5 yards of material at heaped capacity and hold it for transport with the aid of its front double clam-shell door.

Height adjustment up to 18" provides precise depth control, and as plenty of clearance when dumping loads or transporting a load over uneven terrain.

The 1205 is a nice match for your average sized farm tractor with three hydraulic remotes. Whether you use it as a box scraper, grader or earthmover, the 1205 CarryAll was built with the idea that "dirt is never in the right place."

- Four 320/70R x 15 flotation tires provide plenty of support on 8-bolt wheels and 2¾" spindles.
- A box-beam frame and tongue provide unparalleled strength and rigidity.
- The pintle hitch (rated at 68,800 lbs.) combines maximum durability and quick attachment.

- All hoses are furnished, and carry a 3,000-psi rating.
- A 4" x 16" welded hydraulic cylinder provides quick response when opening and closing the clam-shell doors.
- The standard-equipment lighting package provides added safety during transport.

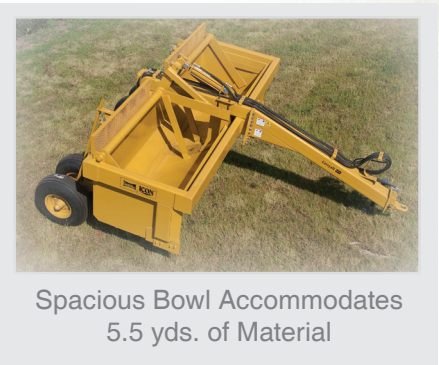
SPECIFICATIONS	
Heaped Capacity	5.5 yards
Struck Capacity	4.25 yards
Cutting Width	12'
Transport Type	No dolly wheels
Hitch Type	Single-lip
Transport Width	12' 10"
Transport Height	6' 6"
Overall Length	16' 10"
Ground Clearance	18"
Cutting Edges	(2) 6' blades with 6" cutting edge
Tires	(4) 320/70R x 15 radial tires
Wheels	8-bolt
Spindles	2¾"
Hubs	6,500 lbs.
Number of Hyd. Hoses	5 (2.5 sets)



Hydraulic Front Gate
for Carrying Material



Hydraulic Tilt
for Precise Grading



Spacious Bowl Accommodates
5.5 yds. of Material

