

## REPAIR PARTS CATALOG



# *Chisel Plow*

**Mounted Models: CPP7-02 THROUGH CPP16-02  
CPP7-03 THROUGH CPP16-03**

**IMPORTANT!**

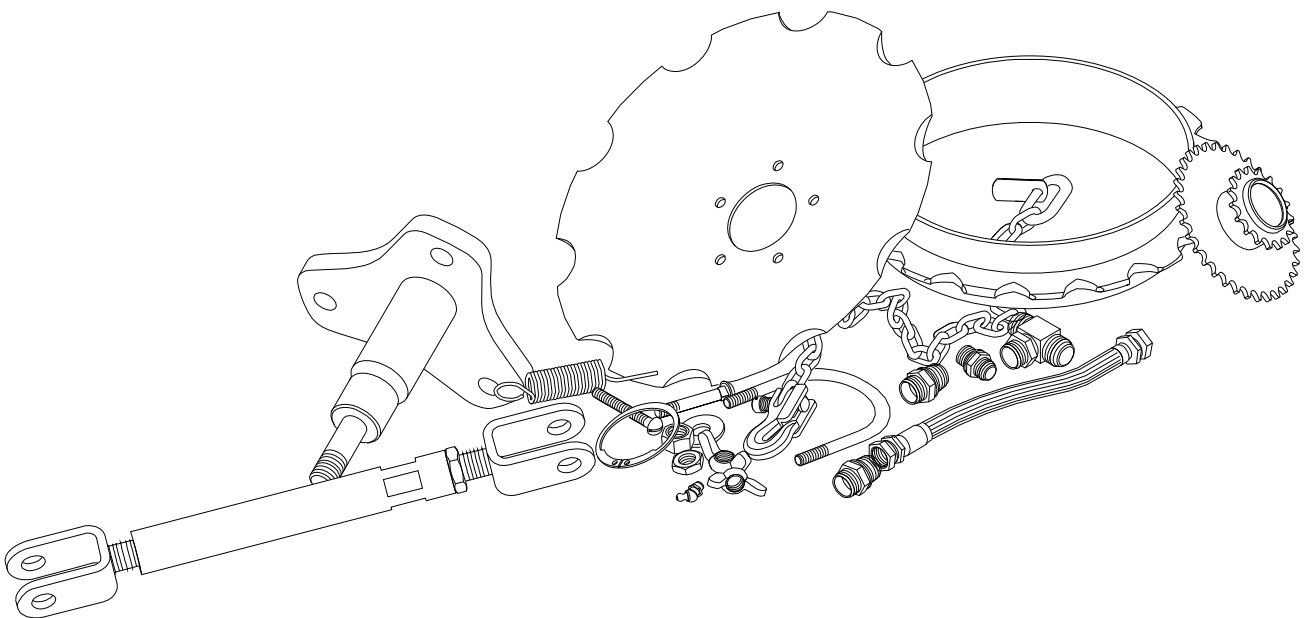
Repairs cannot be purchased  
retail direct from factory.  
Order through your Brillion dealer.

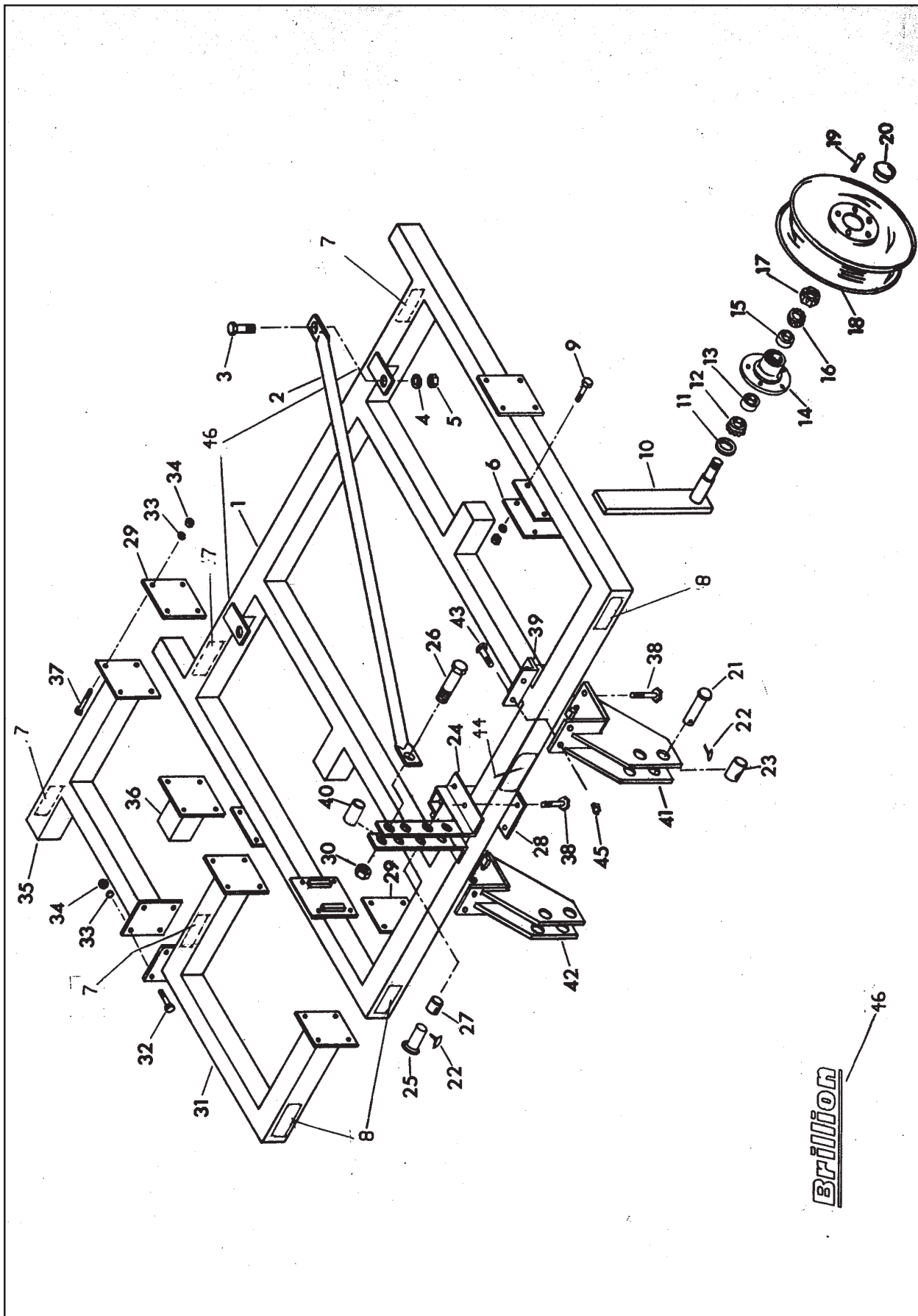


# REPAIR PARTS

## CONTENTS

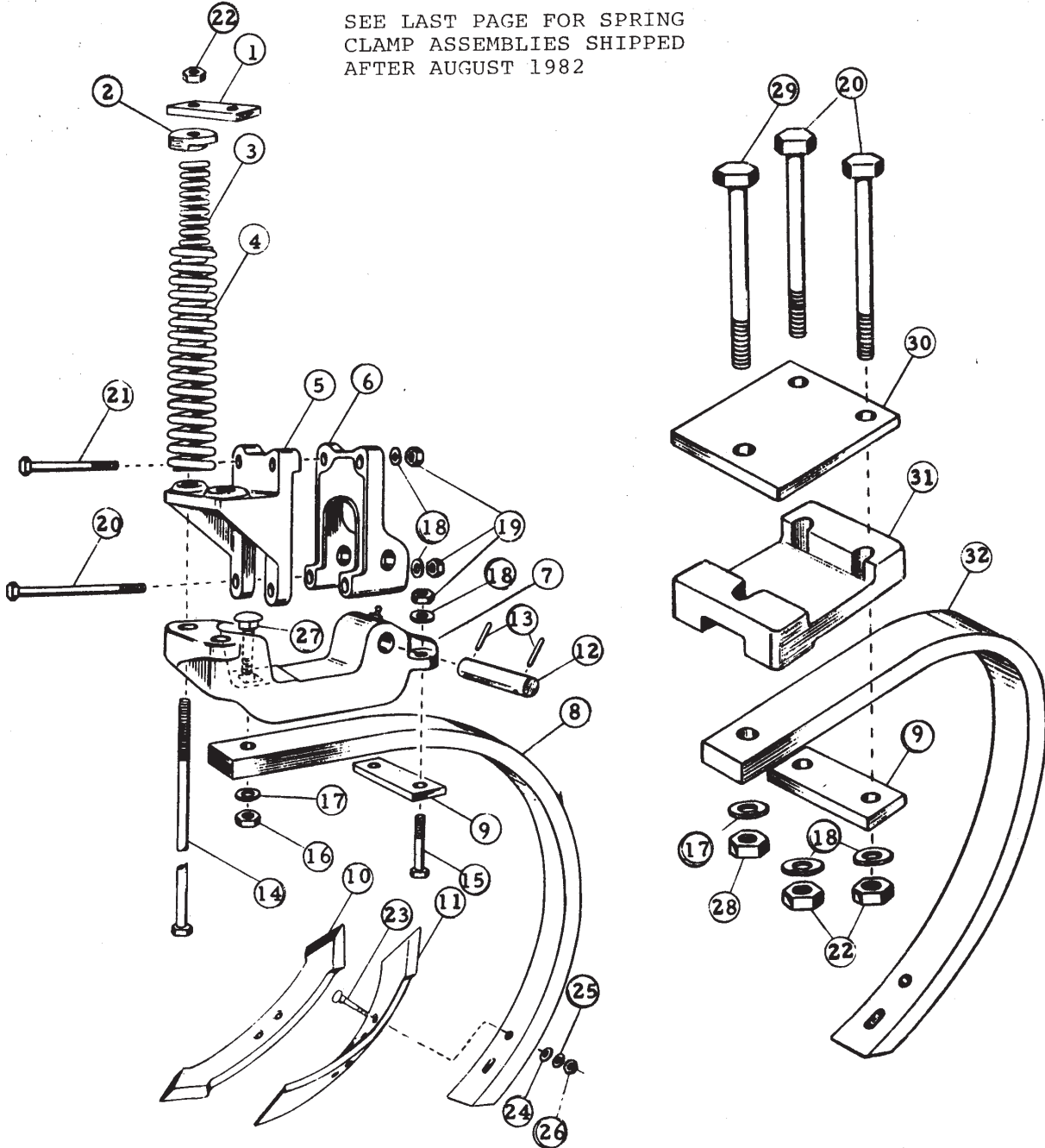
Axle Bracket Assemblies .....	2
Seed Box Assembly .....	3
Frame Assembly .....	4
Box Drive .....	5A, 5B
Tapered Roller Bearing Kit .....	6
Safety Decals .....	7



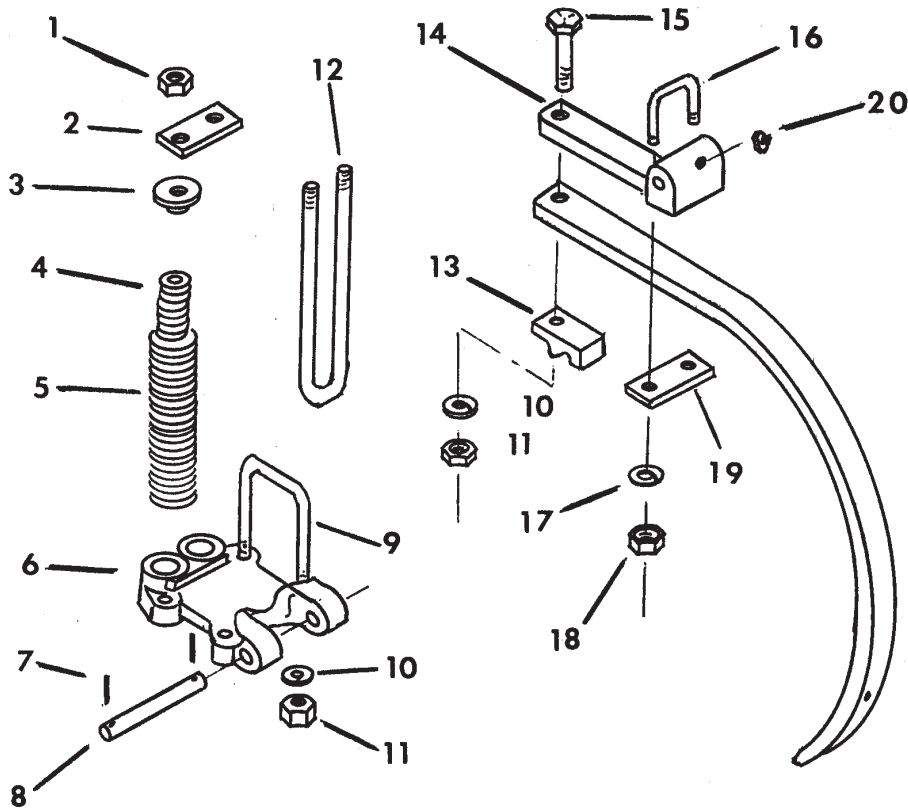


FRAME				
Index No.	Part No.	Description	No. Req'd.	Weight
1	7D017	7' Frame Assembly	1	429.0
	7D442	10' Frame Assembly	1	548.0
2	7D473	L.H. Brace	1	25.4
	7D472	R.H. Brace	1	25.4
3	3D510	Bolt, 3/4-10NC x 2 1/2" Long Gr. 5	2	.4
4	1C211	Lockwasher, 3/4"	2	-
5	1C210	Nut, 3/4-10NC Hex	2	.1
6	1J469	Plate	2	9.0
7	2J430	Decal, Red Reflective	2	-
8	2J431	Decal, Amber Reflective	2	-
9	8C065	Bolt, 5/8-11NC x 3" Long Gr. 5	8	.3
10	1J402	Bar, Hub & Spindle Assembly, 3/4" bearing (32" shank models) -Items10-17, & 20	2	48.5
	1J404	Bar, Hub & Spindle Assembly, 3/4" bearing (26" shank models) -Items10-17, & 20	2	36
11	1D273	Seal	2	.1
12	5C480	Bearing Cone #LM48548	2	.3
13	5C479	Bearing Cup #LM48510	2	.2
14	1J390	Wheel Hub, 3/4 Brg.	2	8.6
15	5C912	Bearing Cup #LM11910, 3/4 Brg.	2	.2
16	5C911	Bearing Cone #LM11949, 3/4 Brg.	2	.3
17	3C173	Slotted Nut	2	.1
18	4C129	Wheel Rim, 15" (5 bolt)	2	16.0
19	5C100	Wheel Bolt	10	.1
20	1J463	Hub Cap -	2	.1
21	5D156	Clevis Pin, 1 1/8" dia. x 5" Long	2	1.6
22	5D110	Klik Pin	3	.1
23	5D158	Sleeve (Category III & Quick Couplers)	2	.2
24	7D456	Mast Assembly	1	30.0
25	6D529	Clevis Pin, 1" dia. x 4 1/2" Long	1	1.1
26	6D528	Bolt, 1"-8NC x 6" Long Gr. 5	1	1.4
27	5D157	Sleeve (Category III & Quick Couplers)	1	.1
28	7D462	Plate	1	5.0
29	6D299	Plate	1	7.1
30	6D306	Stover Nut, 1"-8NC Hex	1	.2
31	6D273	Two Foot Extension (For 11', 13', 14', & 16' Units)	2	87.5
32	5C460	Bolt, 5/8-11NC x 2" Long	-	.2
33	1B166	Lockwasher, 5/8"	-	-
34	1C392	Nut, 5/8-11 NC Hex	-	-
35	6D272	Three Foot Extension (For 13' & 16' units)	2	65.7
36	6D271	One Foot Extension (For 9' & 12' units)	2	16.1
37	6D305	Bolt, 5/8-11NC x 5" Long gr. 5 -- 11' & 14' Units 13' & 16' Units	8 16	.5 .5
38	6D355	Bolt, 5/8-11NC x 6" Long Gr. 5	8	.6
	5C461	Locknut, 5/8-11NC Hex	8	.1
39	7D470	L.H. Angle	1	2.6
	7D471	R.H. Angle	1	2.6
		(Continued on Page 5)		

SEE LAST PAGE FOR SPRING  
CLAMP ASSEMBLIES SHIPPED  
AFTER AUGUST 1982



FRAME (cont'd)				
Index No.	Part No.	Description	No. Req'd.	Weight
40	6D988	Spacer, 2 1/8" Long	1	.2
41	7D464	L.H. Bracket Assembly	1	22.0
42	7D463	R.H. Bracket Assembly	1	22.0
43	8D084	Capscrew, 5/8-11NC x 4 1/2" Long Gr. 5	8	.3
44	8J310	Decal, "Caution"	1	-
45	5C461	Locknut, 5/8-11NC Hex	4	.1
46	4K036	Decal, "Brillion"	2	-
SHANKS & POINTS				
1	6D409	Strap	1	.4
2	6D410	Spring Cap	2	1.0
3	6D362	Compression Spring, 17/64 Wire Diameter	2	1.3
4	6D361	Compression Spring, 7/16 Wire Diameter	2	4.0
5	6D406	Shank Support, Front	1	6.5
6	6D407	Shank Support, Rear	1	4.0
7	8D361	Clamp Pivot [6D408 - Clamp and Lube Fitting]	1	9.0
8	6D283	Shank - 26S, 1" x 26" Clear., Spring Cushion	1	25.6
	6D314	Shank - 1" x 26" (replaced by 6D283)		
	2J644	Shank - 32S, 1 1/4" x 26" Clear., Spring Cushion	1	32.0
	6D913	Shank - 32S, 1 1/4" x 32" Clear., Spring Cushion	1	37.5
	6D354	Shank - 1 1/4" x 32" (replaced by 6D913)		
9	6D280	Strap	1	1.2
10	6D213	Regular Chisel Point, 5/8" Thick x 2" Wide	1	4.8
11	6D215	Twisted Shovel, R.H., 3/8" Thick x 3" Wide	1	6.2
	6D216	Twisted Shovel, L.H., 3/8" Thick x 3" Wide	1	6.2
12	2J097	Pin	1	1.3
13	2J600	Roll Pin, 5/16"x 1 1/2" Long	2	-
14	6D373	Machine Bolt, 5/8" x 14" Long, Gr. 5	2	1.3
15	7D189	Capscrew, 5/8" x 3 1/4" Long, Gr. 5	2	.3
16	1C210	Nut, 3/4" Regular Hex	1	-
17	1C211	Lockwasher, 3/4" Std.	1	-
18	1B166	Lockwasher, 5/8" Std.	6*	-
19	1C392	Nut, 5/8" Regular Hex	6*	-
20	7D040	Machine Bolt, 5/8" x 8" Long (Use w/ 1 1/4" thk. rigid shank)	-	-
21	6D355	Capscrew, 5/8" x 6" Long, Gr. 5	2	.6
22	5C461	Locknut, 5/8" Regular Hex	2	-
23	4K390	Plow Bolt, 7/16" x 3" Long, Gr. 5	2	-
24	7C460	Flat Washer, 7/16 Std.	2	-
25	1C314	Lockwasher, 7/16" Std.	2	-
26	1C179	Nut, 7/16" Reg. Hex	2	-
--	--	----	--	--
28	6C729	Locknut, 3/4" Reg. Hex	1	-
29	8D042	Machine Bolt, 3/4" x 7 1/2" Long, Gr. 5	1	.8
30	6D298	Plate	1	6.0
31	6D234	Shank Support	1	5.5
32	6D283	Shank - 1" x 26" Clearance, Rigid	1	23.6
	6D314	Shank - 1" x 26" (replaced by 6D283)		
	6D913	Shank - 1 1/4" x 32" Clearance, Rigid	1	37.5
	6D354	Shank - 1 1/4" x 32" (replaced by 6D913)		
	2J644	Shank - 1 1/4" x 26" Clear., Rigid	1	32.0
	*			
		* Only 2 used on Rigid Mount Shank Support		



SPRING SHANK ASSEMBLY				
Index No.	Part No.	Description	*No. Used	Weight
1	5C461	Lock nut - 5/8-11NC	2	.1
2	6D409	Strap	1	.4
3	6D410	Cap	2	1.0
4	6D362	Spring (inner)	2	1.3
5	6D361	Spring (outer)-7/16" Wire Diameter prior to 5-28-96	2	4.0
	4K076	Spring (outer)-1/2" Wire Diameter, used after 5-28-96	2	5.1
6	4J675	Shank Clamp	1	13.5
7	1C659	Roll Pin, 1/4 x 1 1/2"	2	--
8	2J097	Pin	1	1.5
9	4J293	U-Bolt	2	2.2
10	1C211	Lockwasher, 3/4"	5	--
11	1C210	Nut, 3/4-10NC	5	.1
12	2J096	U-Bolt, 5/8-11NC	1	3.0
13	2J091	U-Bolt Clip	1	1.5
14	2J092	Shank Holder	1	6.4
15	6D758	Capscrew, 3/4 x 3 1/2"	1	.5
16	2J094	U-Bolt, 5/8-11NC	1	.9
17	1B166	Lockwasher, 5/8"	2	--
18	1C392	Nut, 5/8-11NC	2	.1
19	6D280	Strap	1	1.2
20	9D923	Grease Fitting	1	--







Equipment from Landoll Corporation is built to exacting standards ensured by ISO 9001:2008 registration at all Landoll manufacturing facilities.

**LANDOLL CORPORATION**

1900 North Street

Marysville, Kansas 66508

(785) 562-5381

**800-428-5655 ~ [WWW.LANDOLL.COM](http://WWW.LANDOLL.COM)**



Copyright 2010. Landoll Corporation

"All rights reserved, including the right to reproduce this material or portions thereof in any form"

---