

## OPERATOR'S MANUAL



# *Chisel Plow*

**Mounted Models: CPP7-02 THROUGH CPP16-02  
CPP7-03 THROUGH CPP16-03**



## CONTENTS

Set-Up and Operation . . . . .	3
Location Reference . . . . .	3
Parts Ordering . . . . .	3
Set-Up Instructions . . . . .	3
Assembly . . . . .	4
Main Frame . . . . .	4
Twisted Shovels . . . . .	10
Maintenance . . . . .	11
Safety . . . . .	11
Safety Signs & Their Locations . . . . .	12



## SETTING UP AND OPERATING INSTRUCTIONS FOR BRILLION CHISEL PLOWS

Your Brillion Chisel Plow is built with the best materials and workmanship available. It has been designed to give years of trouble-free operation, and proper care and operation will insure the service and long life built into it. Study this manual carefully before attempting to assemble or operate the machine.

### LOCATION REFERENCE

"Right" and "Left", "Front" and "Rear" refer to operators "Right" and "Left", "Front" and "Rear" when he faces in the same direction as the machine will travel.

### PARTS ORDERING

When ordering parts for this machine, be sure to include the complete model number and serial number. These numbers are located on the name plate attached to the left inner front-to-back frame tube. (See Fig. 10, page 11.)

Chisel Plow Model No.	
Chisel Plow Serial No.	
Date Purchased	

Be sure to read the warranty on the warranty card that is shipped with the machine. Return the proper portion of the warranty card so that your machine will be recorded.

### GENERAL INFORMATION

Shanks . . . . .	1" x 2" x 26"	Clearance
	1 1/4" x 2" x 32"	Clearance
Shank Spacing . . . . .		One Foot
Working Depth . . . . .		0 to 12"
Gage Wheel Rims . . . . .		15" - 5 Bolt

<u>Model Number</u>	<u>Number of Shanks</u>	<u>3 Point Lift</u>
CPP-7	7	
CPP-9	9	Category II
CPP-10	10	& Category III
CPP-11	11	
CPP-12	12	Category II
CPP-13	13	& Category III
CPP-14	14	Quick coupler
CPP-16	16	

### SET-UP INSTRUCTIONS

Your Brillion Chisel Plow is shipped to you in separate assemblies. Before assembling the unit, separate the various bundles and open the box assembly, taking care not to lose any of the parts or hardware. Use nuts and lockwashers for all bolts and capscrews. (See Page 2 or repair parts catalog for relative location of parts.)

Number Used on CPP Model -02

Widths

<u>Assembly Name</u>	<u>7'</u>	<u>9'</u>	<u>10'</u>	<u>11'</u>	<u>12'</u>	<u>13'</u>	<u>14'</u>	<u>16'</u>
1. Frame Assembly	1	1	1	1	1	1	1	1
2. Brace Bundle	1	1	1	1	1	1	1	1
3. Box Assembly	1	1	1	1	1	1	1	1
4. R. H. Bracket Assembly	1	1	1	1	1	1	1	1
5. L.H. Bracket Assembly	1	1	1	1	1	1	1	1
6. Mast Assembly	1	1	1	1	1	1	1	1
7. 1' Extension Bundle	0	2	0	0	2	0	0	0
8. 2' Extension Bundle	0	0	0	2	0	2	2	2
9. 3' Extension Bundle	0	0	0	0	0	2	0	2
10. Shank Bundles	7	9	10	11	12	13	14	16

ASSEMBLY OF MAIN FRAME

Assemble the 7D-456 mast assembly and 7D-462 plate to the main frame using the 5/8 x 6" long bolts, nuts and lockwashers provided. Do not draw bolts up tight at this time. Next, assemble the L.H. brace assembly and R.H. brace assembly to the mast and the pads on the rear frame tube. The 1" x 6" long bolt fastens both braces to the top set of holes in the mast. The 6D-988 pipe spacer is used over this bolt. Use the 3/4 x 2-1/2" long bolts to attach the other ends of the braces to the frame. Now, all the bolts can be drawn up tight.

Next, place the frame on blocks at least ten inches high for the assembly of the hitch brackets. See figure 1 and determine the bracket spacings to be used with the corresponding Category II or III tractor available. When Category II tractor is used, mount the 7D-463 right hand and 7D-464 left hand brackets with the plates for attaching tractor links offset toward center of machine. For Category III tractors, mount brackets with plates for attaching tractor links offset to outside. Assemble the 7D-470 left hand and 7D-471 right hand angles to their mating brackets using the 5/8-11 NC x 4-1/2" long and 5/8 x 6" long capscrews with the lockwashers and nuts provided. Fasten bolts securely.

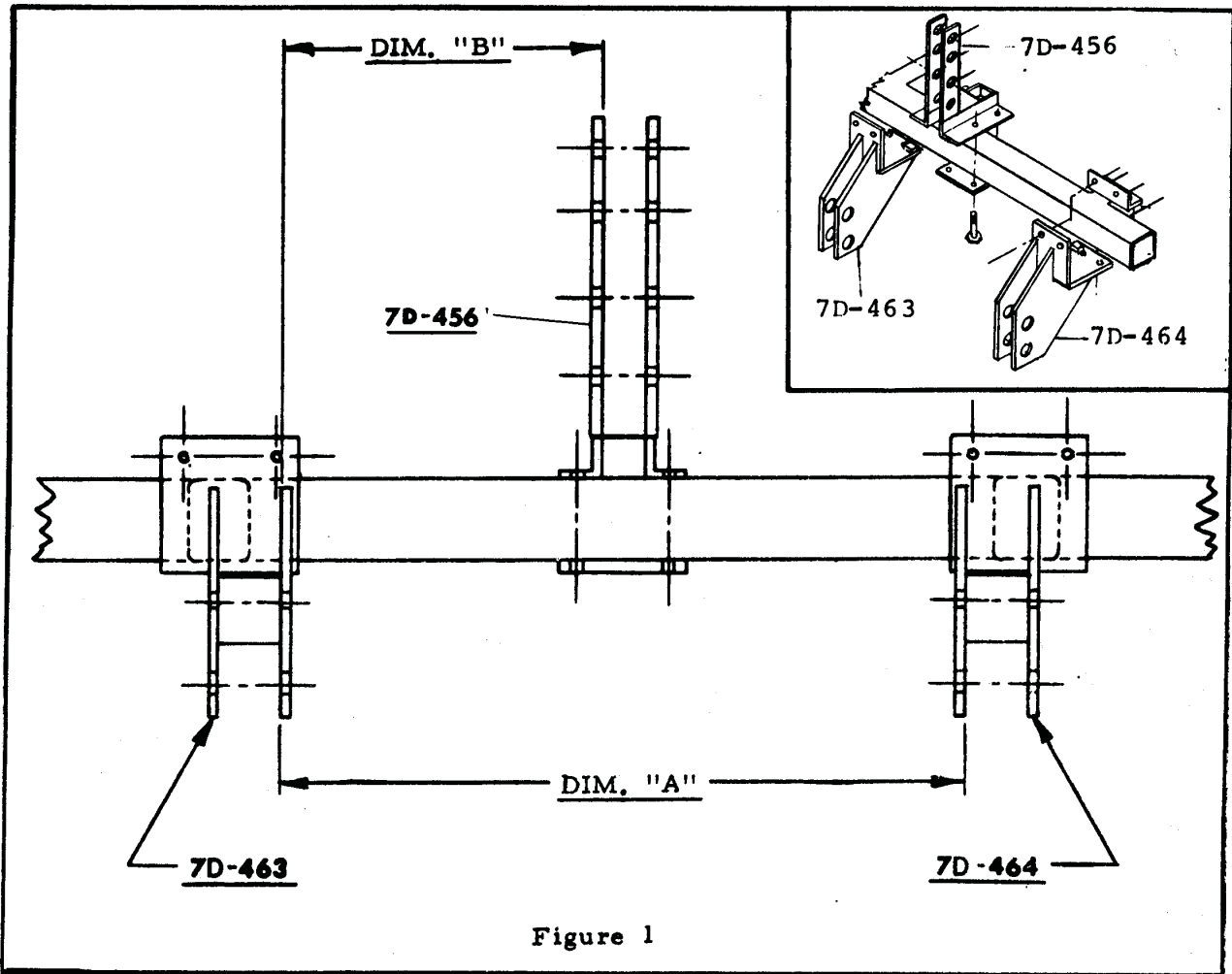
The 5D-157 mast sleeve is to be used on tractors with Category III and all quick coupler attachments. The 5D-158 bracket sleeves are used on tractors with Category III and all quick coupler attachments.

When mounting implement to tractor linkage, the upper set of holes in the 7D-463 and 7D-464 bracket assemblies are used with the 26" shanks. The lower set of holes are used with the 32" shanks.

The holes in the 7D-456 mast to be used will vary with the different tractor categories available as shown on figure 2.

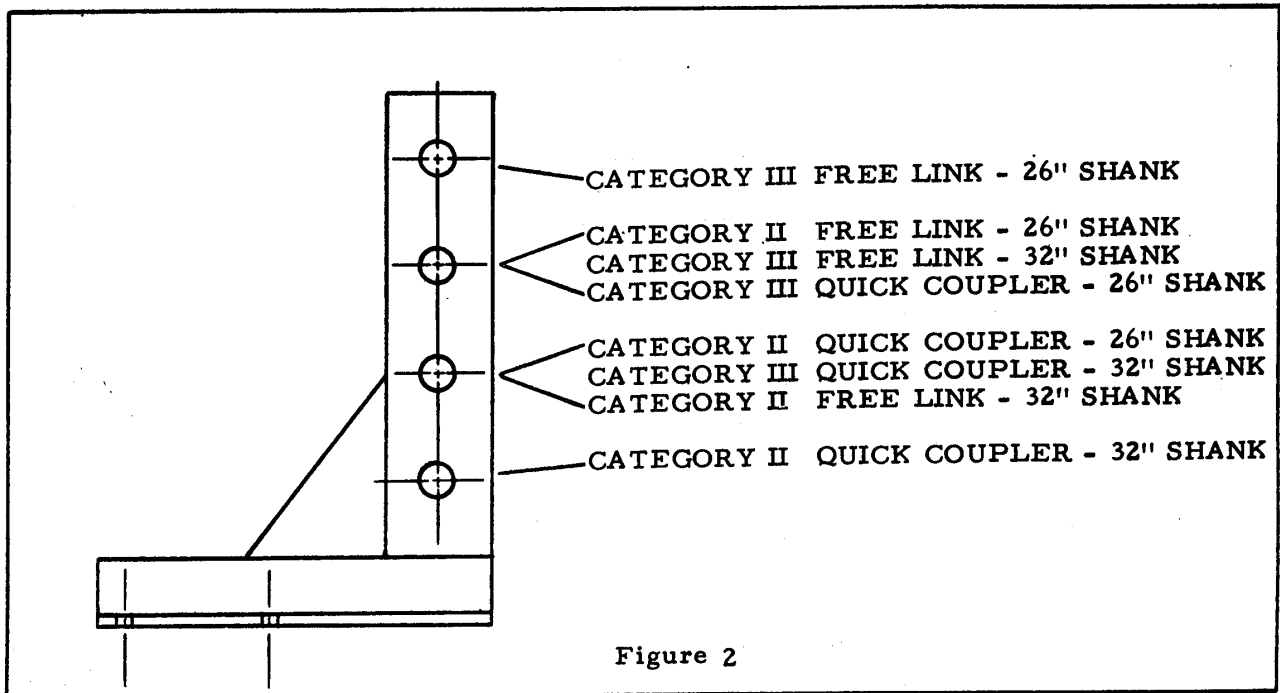
Figure 3 shows how the gage wheels are assembled to the frame, if your unit is so equipped. To adjust gage wheel, loosen the four 5/8 x 3" long bolts but do not remove nuts. Set wheels to desired height so that both wheels are set at the same depth. The distance from the bottom of the tire to the tip of the shank will be the approximate working depth of the shank. Tighten the bolts securely and check periodically for looseness.

FRONT VIEW OF MACHINE WITH MAST AND BRACKET SPACINGS



FRAME ASSEMBLY	SHANK SIZE	CATEGORY USED	DIMENSION "A"	DIMENSION "B"
7' & 10'	26" & 32"	II	32-3/8" (Shown)	15-1/8" (Shown)
7' & 10'	26" & 32"	III	37-15/16"*	17-15/16"

\*TO OBTAIN THIS DIMENSION, MOUNT L. H. BRACKET ASSEMBLY ON RIGHT HAND SIDE OF MACHINE & R. H. BRACKET ASSEMBLY ON LEFT HAND SIDE OF MACHINE. (REFER TO PAGE 2 - LOCATION REFERENCE.)



See Figure 4 and Figure 5 for assembly and location of shanks. The rigid mounted shanks are shipped assembled to the shank clamps. To mount these on the chisel plow, remove the 3/4" bolt and nut from the front of the assembly. Slide the assembly onto the tooth bar and replace the bolt and nut.

The spring clamp and the shank are not assembled for shipping. To mount the shank to the clamp, first remove the nut from the 3/4 x 3-1/2" long bolt and remove the bolt from the shank holder and from the U-bolt clip. Loosen the two nuts on the small U-bolt so that the shank can slide between the plate and the shank holder. Remove the two locknuts from the long U-bolt and remove the plate and the spring caps. Slide the shank between the legs of the small U-bolt and between the plate and the shank holder and also between the legs of the long U-bolt. Insert the 3/4" bolt through the shank holder, the shank and the U-bolt clip. Assemble the spring caps, the plate and the two locknuts on the long U-bolt making sure that the U-bolt is positioned correctly in the U-bolt clip. Tighten all nuts. Mount the assembly on the toothbar. Torque the 3/4" nuts to 200 ft.-lbs.

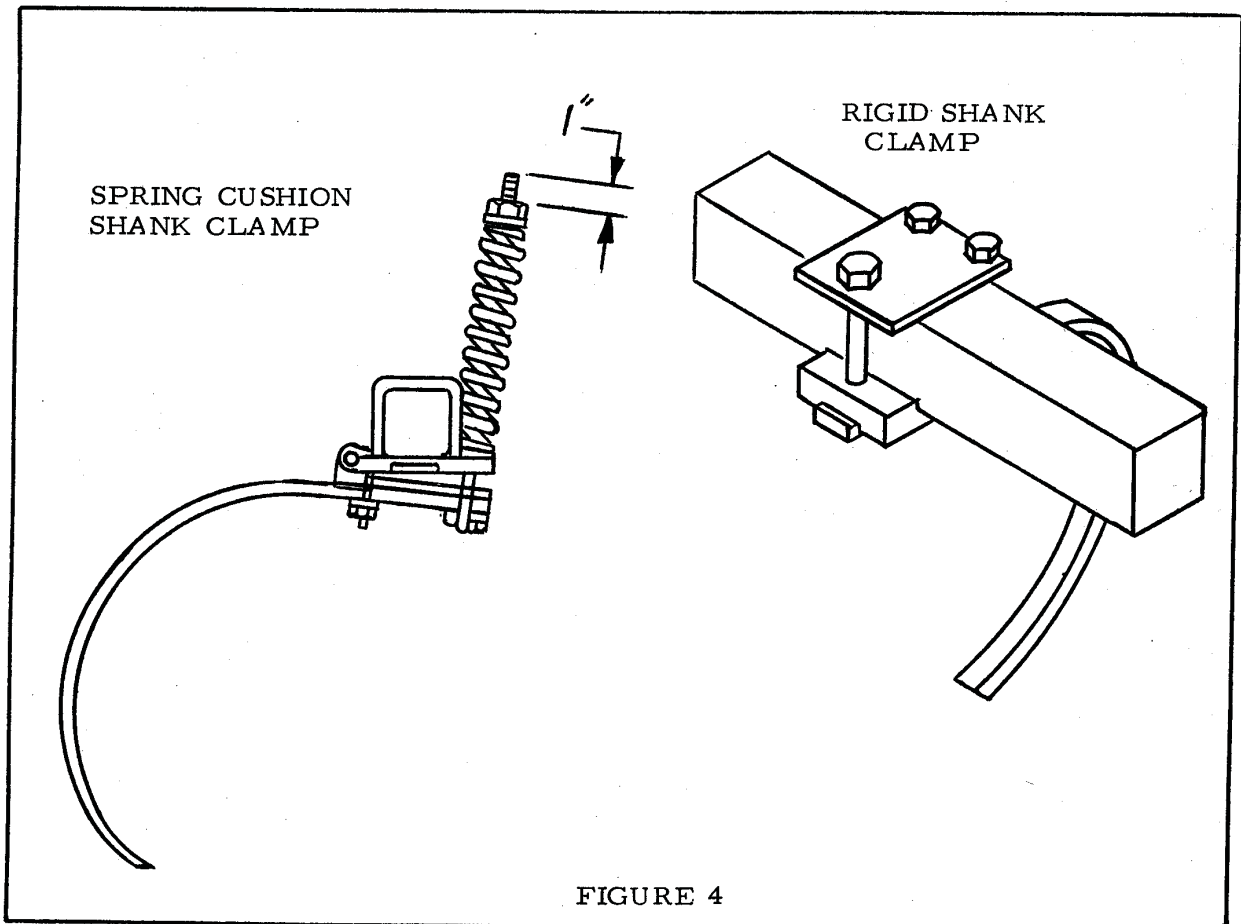
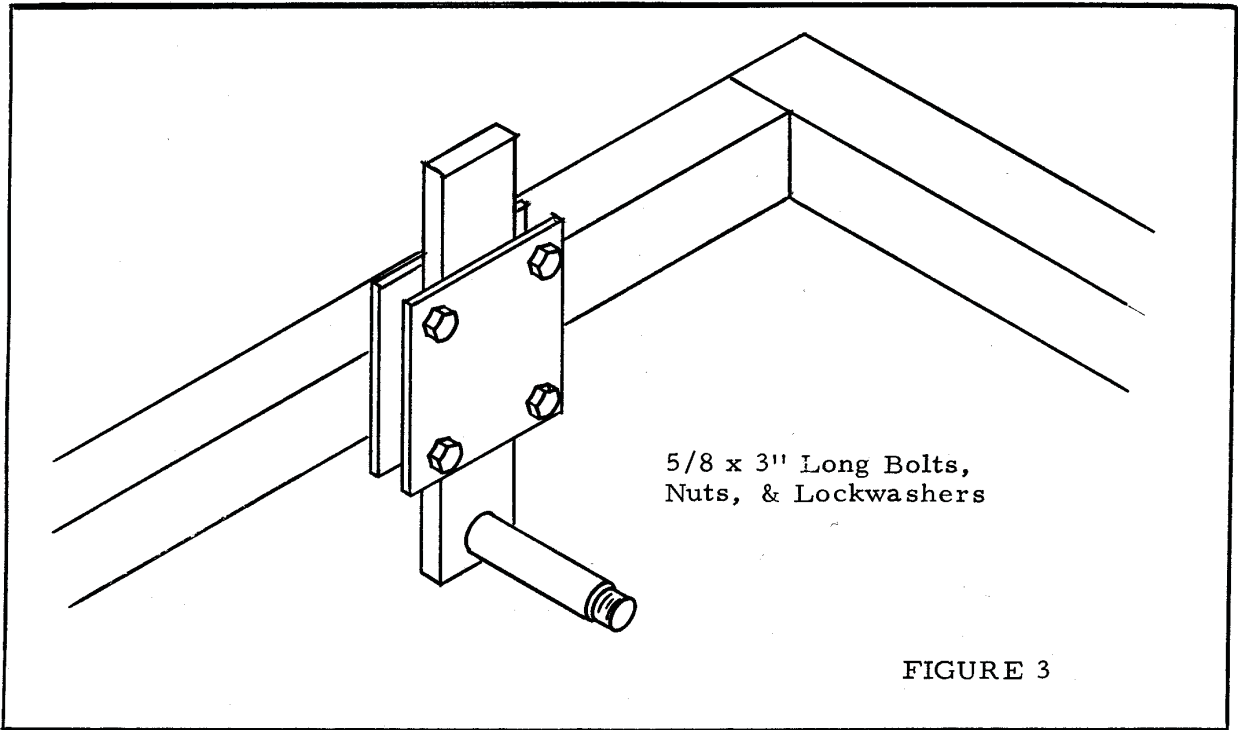
For field operation, the spring bolts should be tightened so that one inch of thread is exposed as shown in Figure 4. For chisel plowing tougher ground you may want to clamp the spring tighter, but when this is done, the shank and tooth will not pass over as great an obstruction.

#### ASSEMBLY OF 9', 11', 13', 12', 14' and 16' CHISEL PLOWS

The first step in assembling these machines is to first assemble the basic 7' machine for the 9', 11', and 13' units or the basic 10' machine for the 12', 14', and 16' units. Then add on the extensions as described in the following paragraphs.

In figure 5 the dashed portion represents the 2' extension and the dotted portion represents the additional section added to extend 3 feet.





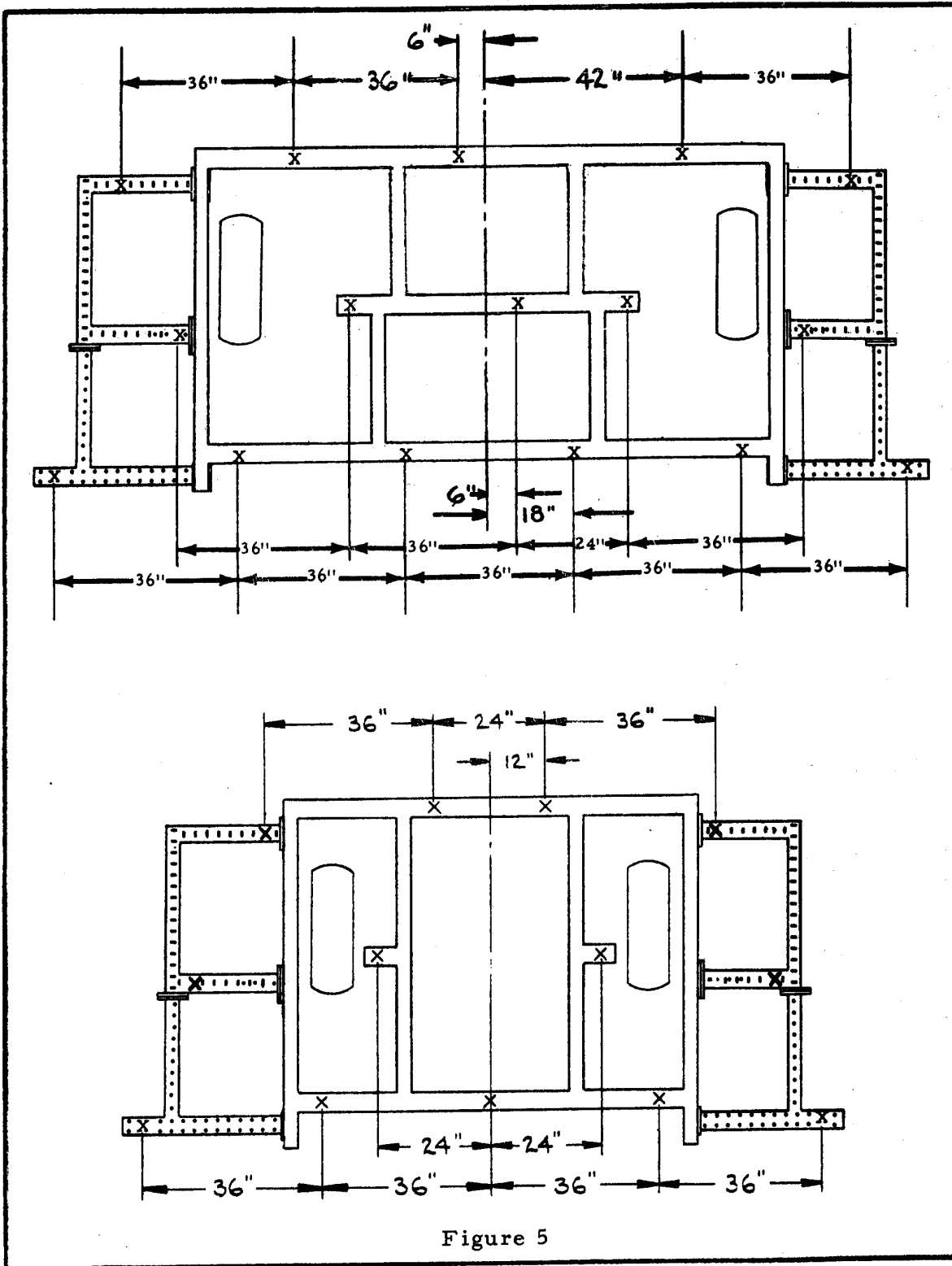
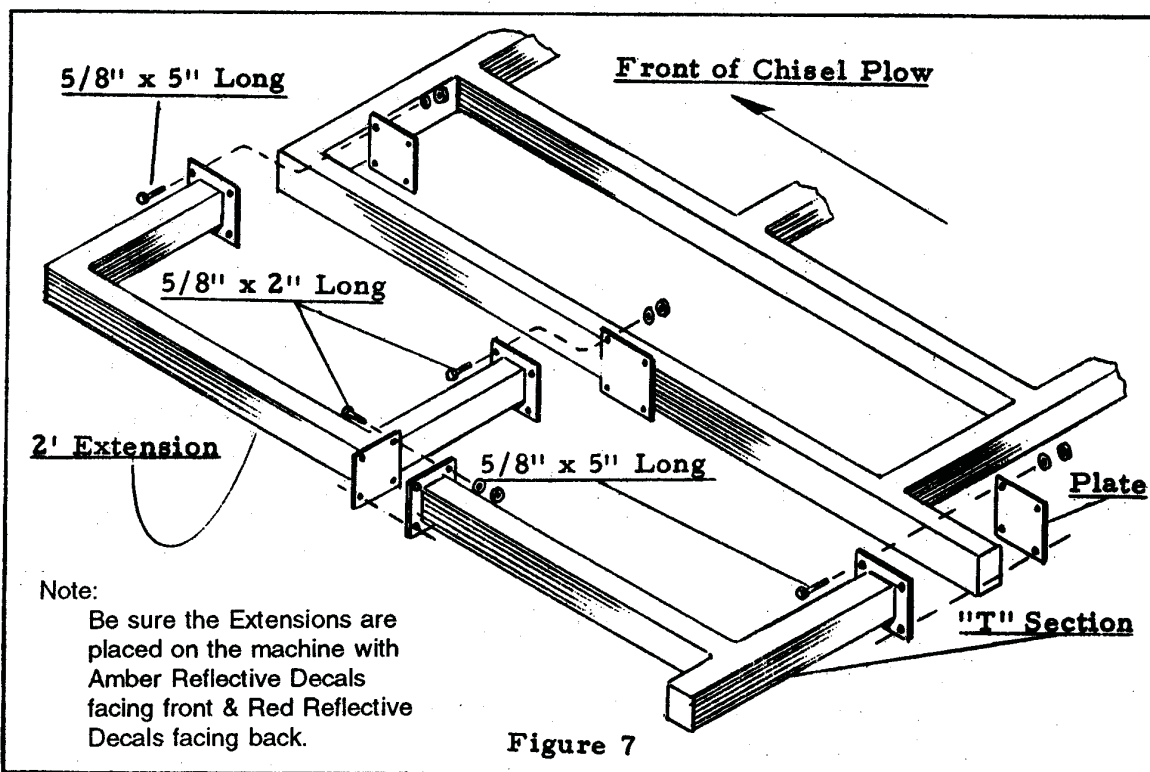
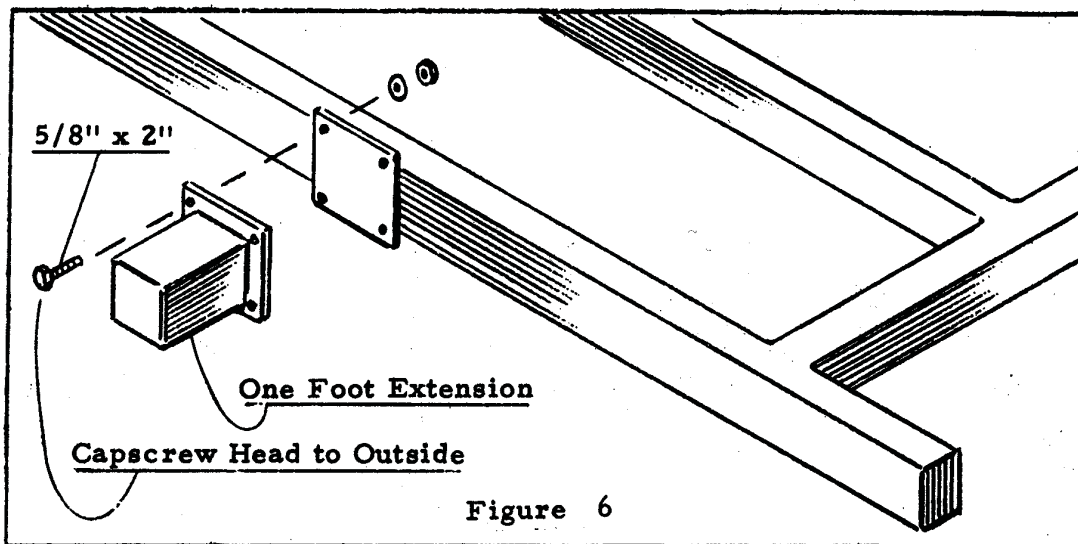


Figure 5

To make 9' and 12' machines the one foot extension is assembled to the basic 7' or 10' machine. See Figure 6 for details. On the 9' and 12' machines the outermost shanks are attached to the one foot extensions.

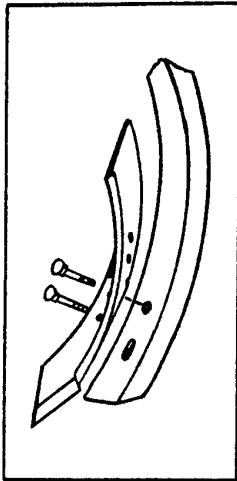
To assemble an 11' or 14' chisel plow, bolt a two foot extension to each side of the main frame as shown in Figure 7 using the 5/8" x 2" long capscrews in the plate at the middle and 5/8" x 5" long capscrews on the front. The front part of the extension and the plate attached to it are used to clamp onto the front-to-rear tubing. Make sure the bolt heads are to the outside of the main frame.

To assemble a 13' or 16' chisel plow, follow the procedure for assembling the 11' and 14' machines as listed above. Then add the two "T" sections as shown in Figure 7. Use the 5/8" x 5" long capscrews to clamp the "T" section to the rear of the main frame and 5/8" x 2" long capscrews to attach the front part of the "T" section to the two foot extension.



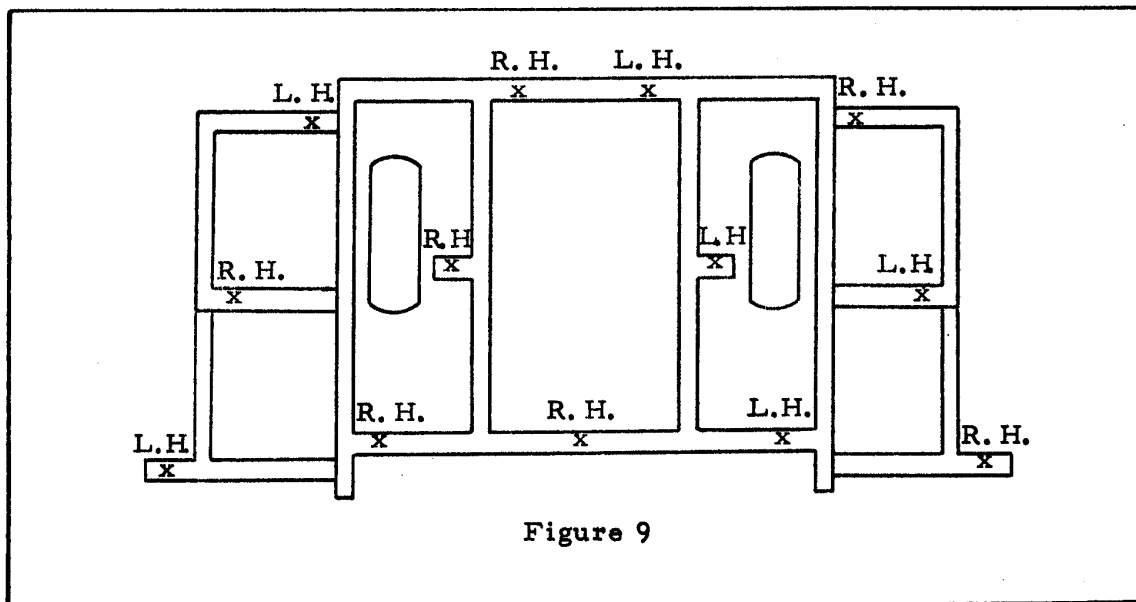
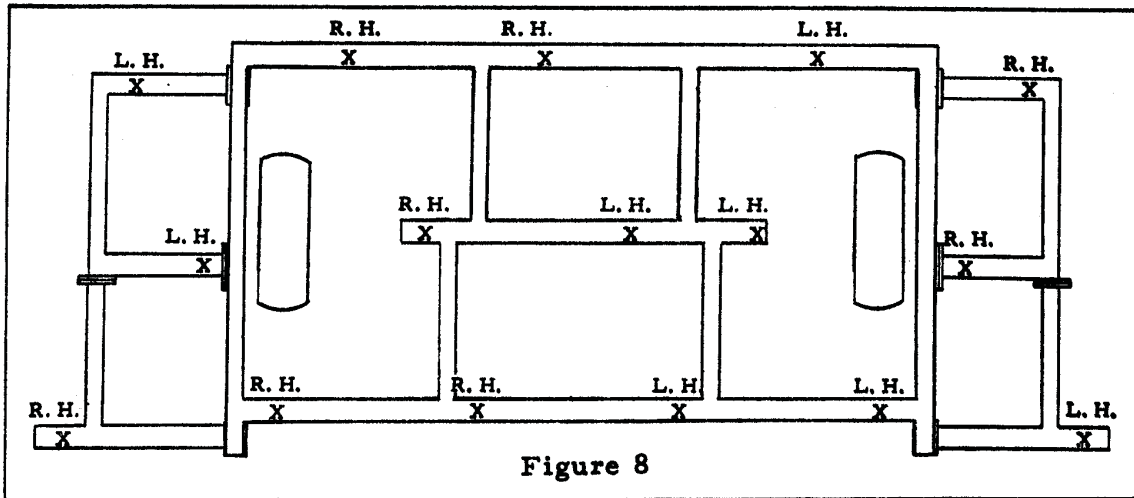
Note:  
 Be sure the Extensions are placed on the machine with Amber Reflective Decals facing front & Red Reflective Decals facing back.

## TWISTED SHOVELS



If twisted shovels are to be used, it is suggested that they be arranged on the shanks as shown in Figure 8. The arrangement shown is for a 16' chisel plow, which has a 10' main frame. For a 14' unit, omit the outside shovel on each end of the machine shown in the illustration; for a 12' unit, omit two shovels from each end; for a 10' unit, omit three shovels from each end. (L. H. means that the soil is thrown left and R. H. means that the soil is thrown to the right.) If another arrangement is desired, be sure that the shovels have balanced positions from right side to left; i. e., a L. H. shovel is the same distance from the center of the machine as a R. H. shovel is on the opposite side. Place the plow bolts in the two bottom holes of the shovel as shown at the left.

See Figure 9 for the arrangement of shovels on machines with 7' main frames.



The shank clearance, 26", refers to the distance from the bottom of the straight portion of the shank to the bottom point on a regular reversible chisel point which is new. See Figure 4.

When replacing or reversing points, change all points at the same time so that they will have the same operating depth. If some shanks have worn points and some have new points, or points of a different design, the chisel plow will not operate efficiently.

## MAINTENANCE

After the first five or six hours of operation, go over the machine and tighten all nuts which might be loose. Normal periodic checks should be made thereafter.

For the shanks with a spring cushion clamp, grease the pivot pin every 10 hours under normal operating conditions.

Gage wheel bearings should be packed once a season.

## SAFETY

A chisel plow is a fairly simple machine, but it must be operated in a prudent manner.

1. Never turn corners at a high rate of speed.
2. Never work under the chisel plow unless it is securely blocked up and cannot be knocked off the blocks.
3. Always take care in raising and lowering the chisel plow, and be certain no one is in the way.
4. Never allow passengers to ride on the chisel plow.
5. Display the Slow Moving Vehicle emblem when traveling on roads.
6. When traveling on the road at night, accessory warning lights should be mounted on the implement. Local regulations should be checked first, and if there are none, the chisel plow owner should take the initiative to make his machine noticeable at night.

**Safety Decals and Decal Locations**

There are three levels of hazard intensity that appear with the safety alert symbol on safety decals: **DANGER**, **WARNING**, and **CAUTION**. The level of hazard intensity is determined by the following definitions:

- DANGER** - Immediate hazards which **WILL** result in severe personal injury or death.
- WARNING** - Hazards or unsafe practices which **COULD** result in severe personal injury or death.
- CAUTION** - Safety reminder; an alert to unsafe practices which could result in personal injury.

Examine safety decals and be sure you have the correct safety decals for the machine. Keep these signs clean so they can be observed readily. It is important to keep these decals cleaned more frequently than the machine. Wash with soap and water or cleaning solution as required. Replace decals that become damaged or lost.

Order decals through your BRILLION dealer.

When applying decals to the machine, be sure to clean the surface to remove any dirt or residue. Where possible, sign placement should protect the sign from abrasion, damage, or obstruction from mud, dirty oil, etc.

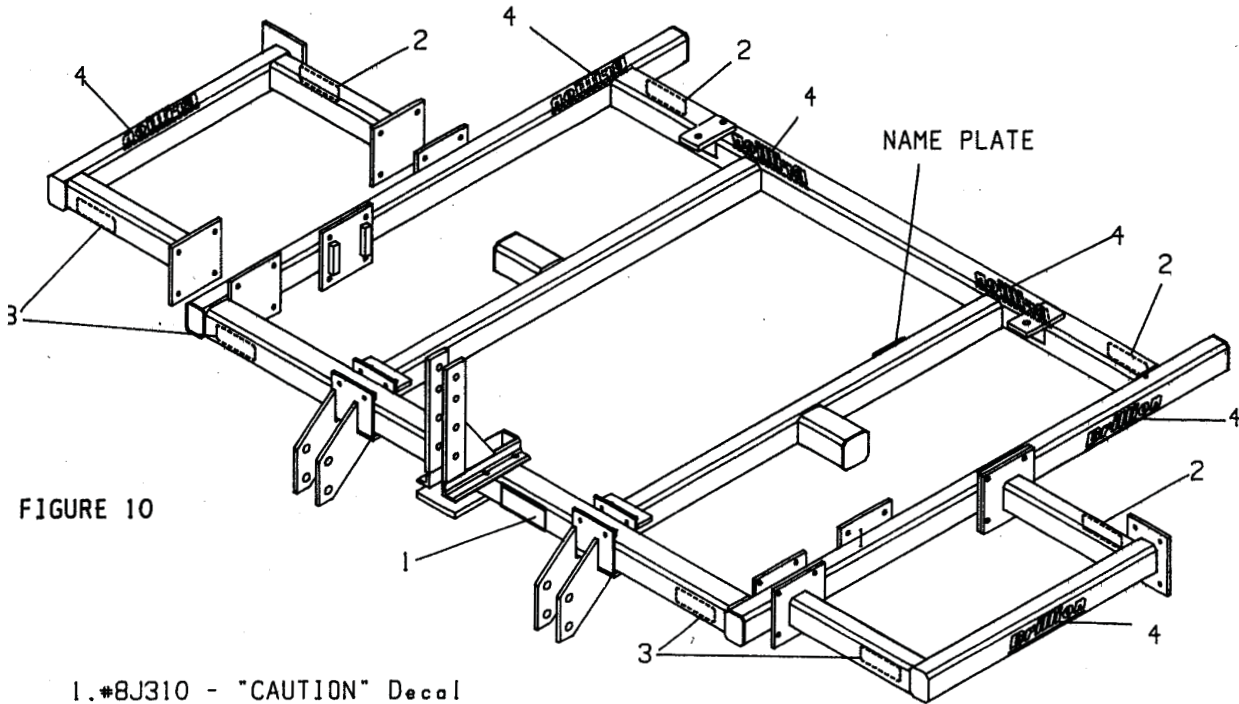


FIGURE 10

1. #8J310 - "CAUTION" Decal

**CAUTION**

1. DO NOT LUBRICATE, ADJUST OR REPAIR WHEN MACHINE IS IN MOTION.
2. DO NOT TOW OR TRANSPORT FASTER THAN 15 MILES PER HOUR.
3. DO NOT RIDE OR ALLOW OTHERS TO RIDE ON THE MACHINE.
4. BLOCK UP ALL HYDRAULICALLY OR MECHANICALLY RAISED COMPONENTS TO PREVENT UNINTENDED LOWERING OR LOWER THE MACHINE TO THE GROUND TO MAKE ADJUSTMENT OR REPAIRS OR WHEN NOT IN USE.
5. KEEP ALL PERSONS AWAY FROM MACHINE DURING HITCHING AND OPERATING.
6. SLOW DOWN BEFORE MAKING SHARP TURNS OR USING THE BRAKES. DRIVE SLOWLY OVER ROUGH GROUND, SIDE HILLS, AND AROUND CURVES TO AVOID TIPPING.
7. COMPLY WITH ALL LAWS WHEN TRANSPORTING THE MACHINE ON PUBLIC ROADWAYS.
8. INSTRUCT ALL OPERATORS IN THE SAFE OPERATION OF THE MACHINE. REVIEW THE OPERATOR'S MANUAL FOR CORRECT PROCEDURES.
9. BLOCK IMPLEMENT TO PREVENT MOVEMENT WHEN UNHITCHED FROM TRACTOR.

8.010



2. #2J430 & Red Reflective

3. #2J431 Amber Reflective

4. #4K036 "BRILLION"  
Remove stripe here to fit.







Equipment from Landoll Corporation is built to exacting standards ensured by ISO 9001:2008 registration at all Landoll manufacturing facilities.

**LANDOLL CORPORATION**

1900 North Street

Marysville, Kansas 66508

(785) 562-5381

**800-428-5655 ~ [WWW.LANDOLL.COM](http://WWW.LANDOLL.COM)**



Copyright 2010. Landoll Corporation

"All rights reserved, including the right to reproduce this material or portions thereof in any form"

---