

REPAIR PARTS CATALOG



CHISEL PLOW

MODELS: CP 10-01
CP 10-02
CP 12-01
CP 12-02
CP 14-01
CP 14-02
CP 16-01
CP 16-02

IMPORTANT!

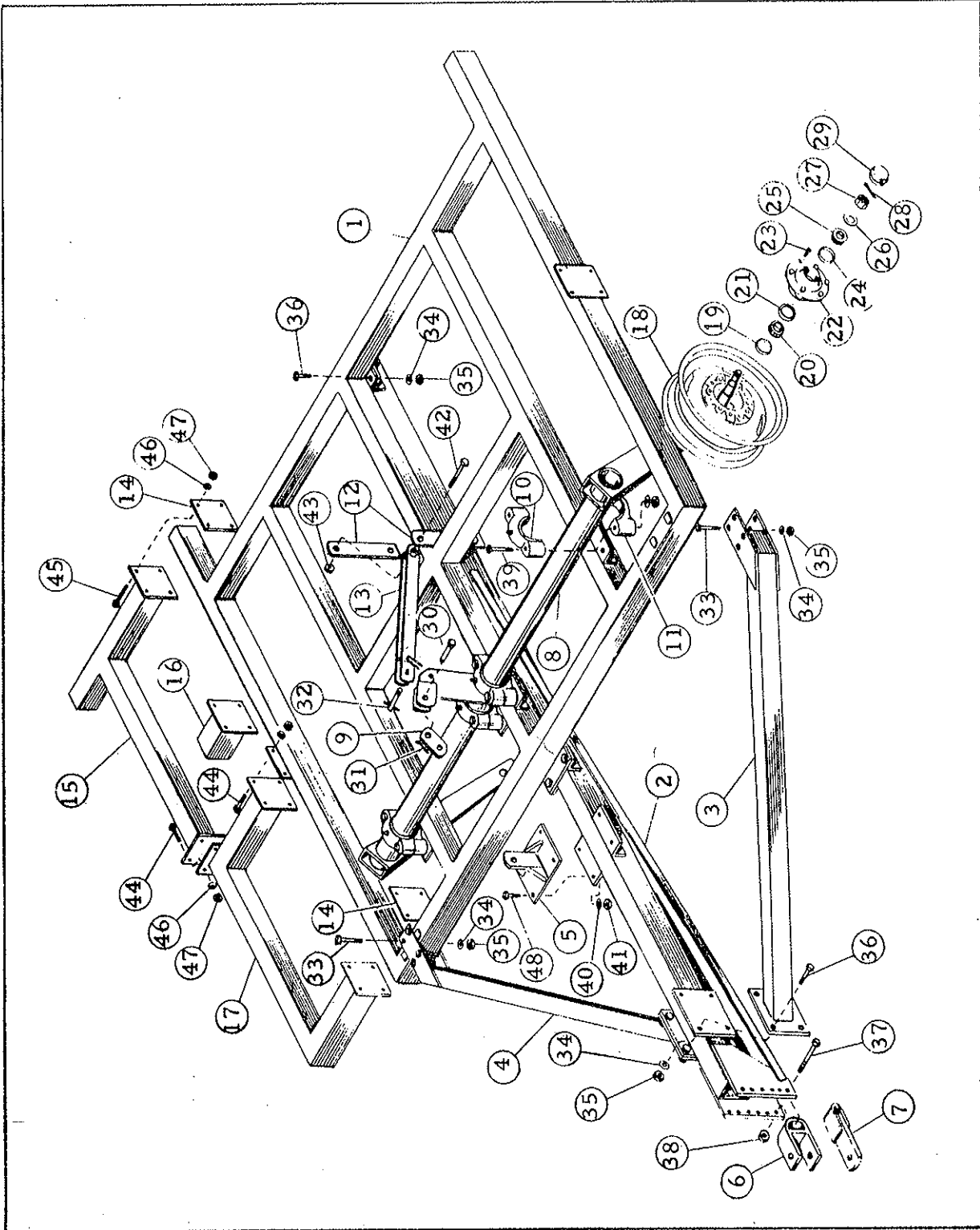
Repairs cannot be purchased retail direct from factory. Order through your Brillion dealer or any established implement dealer.

MODEL NO.

DATE PURCHASED



BRILLION IRON WORKS
BRILLION, WISCONSIN 54110

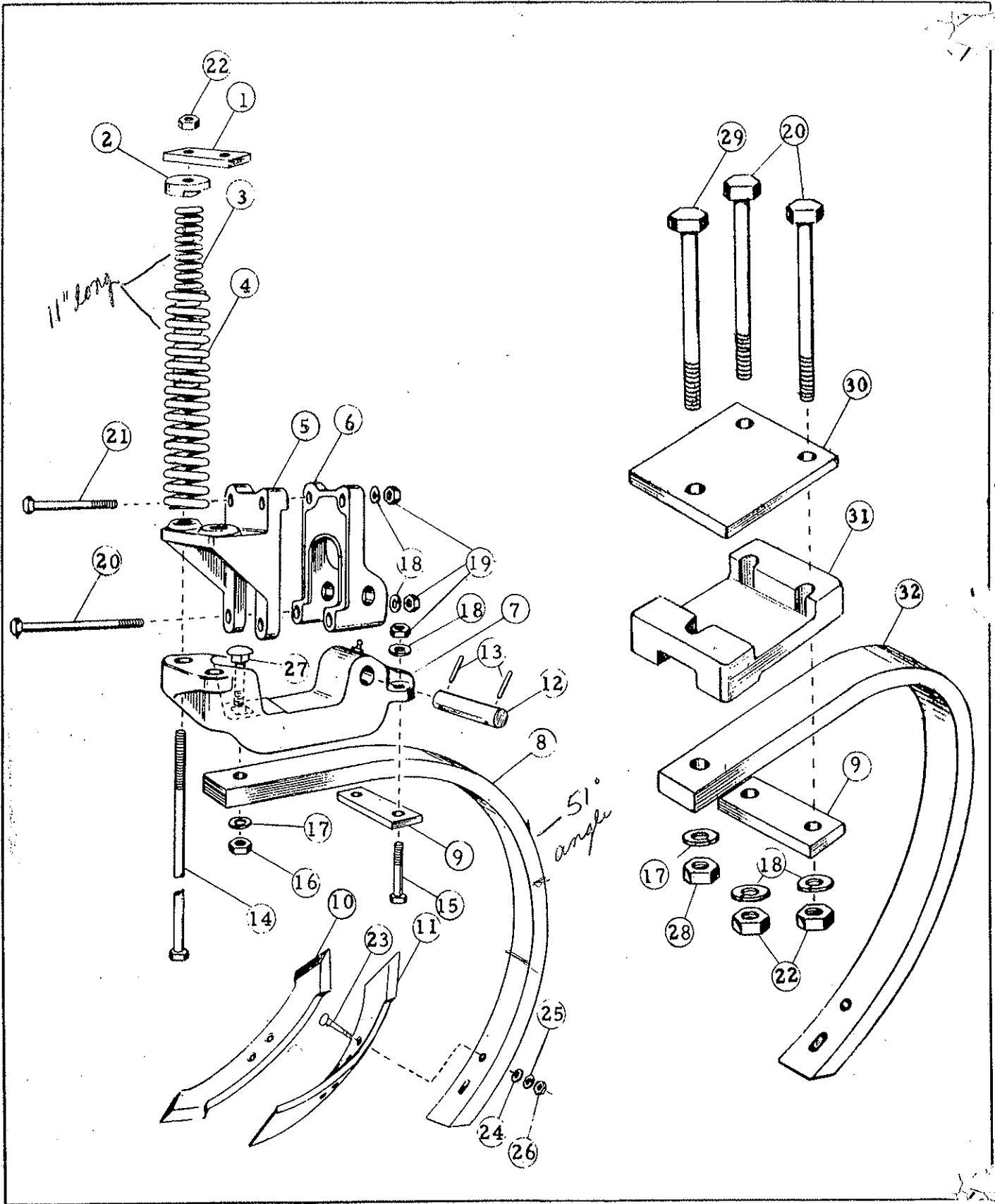


BRILLION PULL TYPE CHISEL PLOW

Index (No.)	Part No.	Part Name	No. Used	Approx. Weight
1	6D-259	Main Frame	1	595.0
2	6D-267	Drawbar	1	292.0
3	6D-252	Drawbar Brace, Left Hand	1	118.0
4	6D-253	Drawbar Brace, Right Hand	1	118.0
5	6D-263	Anchor Lug (For 26" Shank)	1	12.7
	6D-262	Anchor Lug (For 32" Shank)	1	12.7
6	6D-290	Clevis Hitch (For wheel type tractors)	1	10.5
7	6D-286	Flat Bar Hitch (For crawler type tractors)	1	23.1
8	6D-329	Transport Axle (For 26" Shank)	1	182.0
	6D-477	Transport Axle - Less Hubs (For 26" Shank)	1	157.0
	6D-330	Transport Axle (For 32" Shank)	1	196.0
	6D-478	Transport Axle - Less Hubs (For 32" Shank)	1	171.0
9	6D-307	Quick Attach Link	1	3.7
10	6D-309	Axle Bearing - Top	4	5.5
11	6D-274	Axle Bearing - Bottom	4	6.4
12	6D-675	Transport Strap	2	4.8
13	6D-296	Transport Link (For 26" Shank) Red	1	19.4
	6D-297	Transport Link (For 32" Shank) Green	1	18.8
14	6D-299	Plate - For 14' Chisel Plow	2	7.1
		For 16' Chisel Plow	4	7.1
15	6D-272	Three Foot Extension (For 16' Chisel Plow)	2	65.7
16	6D-271	One Foot Extension (For 12' Chisel Plow)	2	16.1
17	6D-273	Two Foot Extension (For 14' & 16' Chisel Plow)	2	87.5
18	6D-311	Wheel, 15 x 6 LB (For 7:60 x 15 Tire)	2	21.5
	6D-312	Wheel, 15 x 8 LB (Optional for 11:00 x 15 Tire)	2	24.0
19	6D-338	Seal	2	.1
20	5C-480	Bearing Cone #LM48548	2	.2
21	5C-479	Bearing Cup #LM48510	2	.2
22	6D-336	Hub	2	10.5
23	5C-100	Wheel Bolt	12	
24	5C-914	Bearing Cup #LM67010	2	.2
25	5C-913	Bearing Cone #LM67048	2	.2
26	1C-871	Flat Washer (1" Standard SAE)	2	.1
27	6D-284	Slotted Nut (1" - 14 NF Finished Hex)	2	
28	1C-278	Cotter Pin, 5/32" x 2" Long	2	
29	6D-337	Hub Cap	2	.8
30	5D-12	Clevis Pin 1" Diameter x 2-1/4 Long	1	.5
31	6C-468	Cotter Pin, 3/16 x 2 Long	1	
32	6D-992	Clevis Pin, 3/4 x 1-1/4 Long	1	.8
33	6D-300	Bolt, 3/4" - 10 NC x 6 Long, Grade 5	8	.9
34	6D-304	Lockwasher, 3/4" Standard	24	
35	1C-210	Nut, 3/4" - 10 NC Regular Hex	24	
36	1D-424	Capscrew, 3/4" - 10 NC x 2 Long	16	.2
37	2J-976	Machine Bolt, 1" - 8 NC x 7 Long Hex Head	1	1.5
38	6D-306	Locknut, 1" - 8 NC Regular Hex	1	.3
39	6D-301	Bolt, 5/8" - 11 NC x 6-1/2 Long, Grade 5	8	.6
40	1B-166	Lockwasher, 5/8" Standard	12	
41	1C-392	Nut, 5/8" - 11 NC Regular Hex	12	
42	6D-300	Bolt, 3/4" - 10 NC x 6 Long, Grade 5	2	.9
43	6C-729	Locknut, 3/4" - 10 NC Regular Hex	1	
*	1C-210	Nut, 3/4" - 10 NC Regular Hex (Travel Link)	1	
*	6D-304	Lockwasher, 3/4" Standard (Travel Link)	1	
*	7D-766	Hose Support	1	2.7

*Not Shown

Continued on next page



BRILLION PULL TYPE CHISEL PLOW

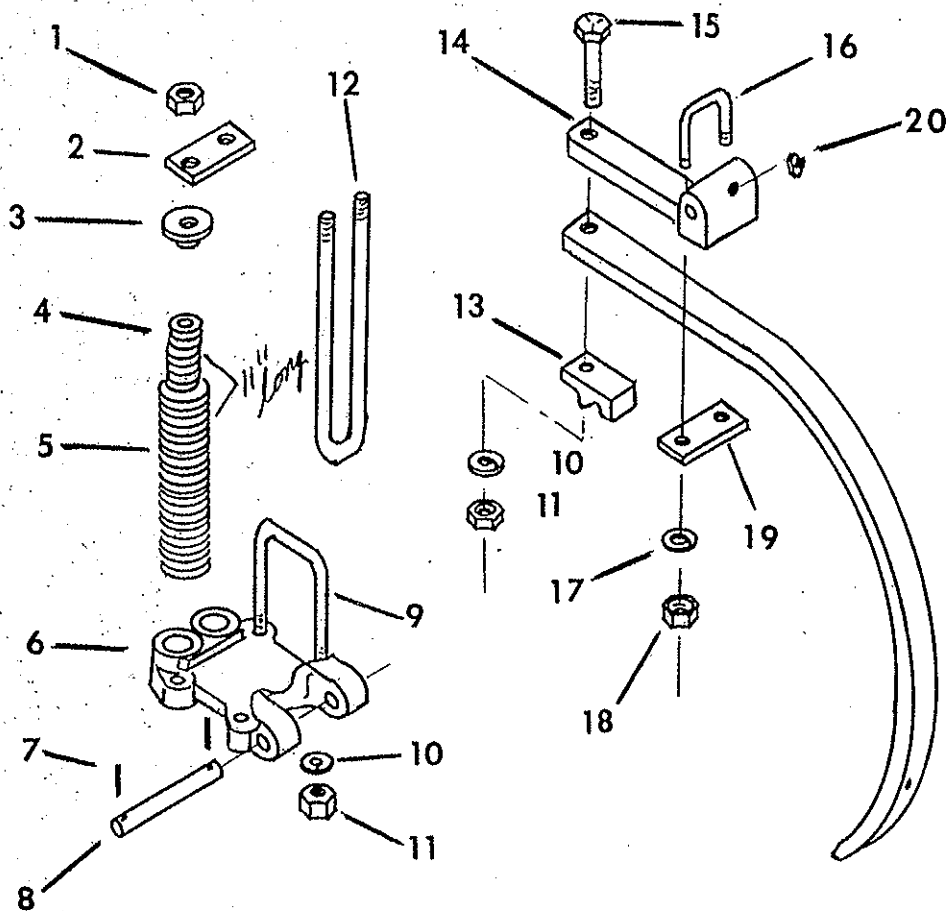
Index No.	Part No.	Part Name	No. Used	Approx. Weight
44	5C-460	Capscrew, 5/8-11 NC x 2 Long, Grade 5 12' & 14' Chisel Plow 16' Chisel Plow	8 16	.2 .2
45	6D-305	Capscrew, 5/8-11 NC x 5 Long, Grade 5 14' Chisel Plow 16' Chisel Plow	8 16	.5 .5
46	1B-166	Lockwasher, 5/8 Standard 12' Chisel Plow 14' Chisel Plow 16' Chisel Plow	8 16 32	
47	1C-392	Nut, 5/8-11 NC, Regular Hex 12' Chisel Plow 14' Chisel Plow 16' Chisel Plow	8 16 32	
48	2D-474	Capscrew, 5/8-11 NC x 1-3/4 Long	4	.2

CHISEL PLOW SHANKS AND POINTS

No. Per
Shank

1	6D-409	Strap	1	.4
2	6D-410	Spring Cap	2	1.0
3	6D-362	Compression Spring, 17/64 Wire Diameter	2	1.3
4	6D-361	Compression Spring, 7/16 Wire Diameter <i>> 11" long</i>	2	4.0
5	6D-406	Shank Support - Front	1	6.5
6	6D-407	Shank Support - Rear	1	4.0
7	8D-361	Clamp Pivot (6D-408 Clamp and Lube Fitting)	1	9.0
8	6D-283	Shank - 26S, 1" x 26" Clear., Spring Cushion	1	25.6
	6D-913	Shank - 32S, 1-1/4" x 32" Clear., Spring Cushion <i>51°</i>	1	37.5
	6D-354	Shank - 32S, 1" x 32" Clear., Spring Cushion	1	29.8
9	6D-280	Strap	1	1.2
10	6D-213	Regular Chisel Point, 5/8" Thick x 2" Wide	1	4.8
11	6D-215	Twisted Shovel, R.H., 3/8" Thick x 3" Wide	1	6.2
	6D-216	Twisted Shovel, L.H., 3/8" Thick x 3" Wide	1	6.2
12	6D-411	Pin - <i>REPLACED BY 2J097</i>	1	1.3
13	2J-600	Roll Pin, 5/16" x 1-1/2" Long	2	
14	6D-373	Machine Bolt, 5/8" x 14" Long, Grade 5	2	1.3
15	7D-189	Capscrew, 5/8" x 3-1/4" Long, Grade 5	2	.3
16	1C-210	Nut, 3/4" Regular Hex	1	
17	6D-304	Lockwasher, 3/4" Standard	1	
18	1B-166	Lockwasher, 5/8" Standard	6*	
19	1C-392	Nut, 5/8" Regular Hex	6*	
20	6D-303	Machine Bolt, 5/8" x 7-1/2" Long, Grade 5	2	.7
	7D-40	Machine Bolt, 5/8" x 8" Long (Use with 1-1/4 Thk. rigid shank)		
21	6D-355	Capscrew, 5/8" x 6" Long, Grade 5	2	.6
22	5C-461	Locknut, 5/8" Regular Hex	2	
23	5D-743	Plow Bolt, 7/16" x 2-1/2" Long, Grade 5 <i>5D967?</i>	2	
24	7C-461	Flat Washer, 7/16" Standard	2	
25	1C-314	Lockwasher, 7/16" Standard	2	
26	1C-179	Nut, 7/16" Regular Hex <i>4K552?</i>	2	
27	7D-188	Carriage Bolt, 3/4" x 2-3/4" Long, Grade 5	1	.4
28	6C-729	Locknut, 3/4" Regular Hex	1	
29	6D-302	Machine Bolt, 3/4" x 7" Long, Grade 5	1	.8
	8D-42	Machine Bolt, 3/4" x 7-1/2" Long, Grade 5 (Use with 1-1/4" Thk. rigid shank)		
30	6D-298	Plate	1	6.0
31	6D-234	Shank Support	1	5.5
32	6D-314	Shank - 26R, 1" x 26" Clearance, Rigid	1	23.6
	6D-913	Shank - 32R, 1-1/4" x 32" Clearance, Rigid	1	37.5

*Only 2 used on Rigid Mount Shank Support



SPRING SHANK ASSEMBLY

Index No.	Part No.	Description	No. Used	Wt.
1	5C-461	Locknut 5/8-11NC	2	.1
2	6D-409	Strap	1	.4
3	6D-410	Cap	2	1.0
4	6D-362	Spring - Inner	2	1.3
5	6D-361	Spring - Outer <i>> 11" long</i>	2	4.0
6	4J-675	Shank Clamp	1	13.5
7	1C-659	Roll Pin 1/4 x 1 1/2	2	
8	2J-097	Pin	1	1.5
9	4J-293	U-bolt	2	2.2
10	1C-211	Lockwasher 3/4"	5	
11	1C-210	Nut 3/4-10NC	5	.1
12	2J-096	U-bolt 5/8-11NC	1	3.0
13	2J-091	U-bolt Clip	1	1.5
14	2J-092	Shank Holder	1	6.4
15	6D-758	Capscrew 3/4 x 3 1/2	1	.5
16	2J-094	U-bolt 5/8-11NC	1	.9
17	1B-166	Lockwasher 5/8"	2	
18	1C-392	Nut 5/8-11NC	2	.1
19	6D-280	Strap	1	1.2
20	9D-923	Grease Fitting	1	