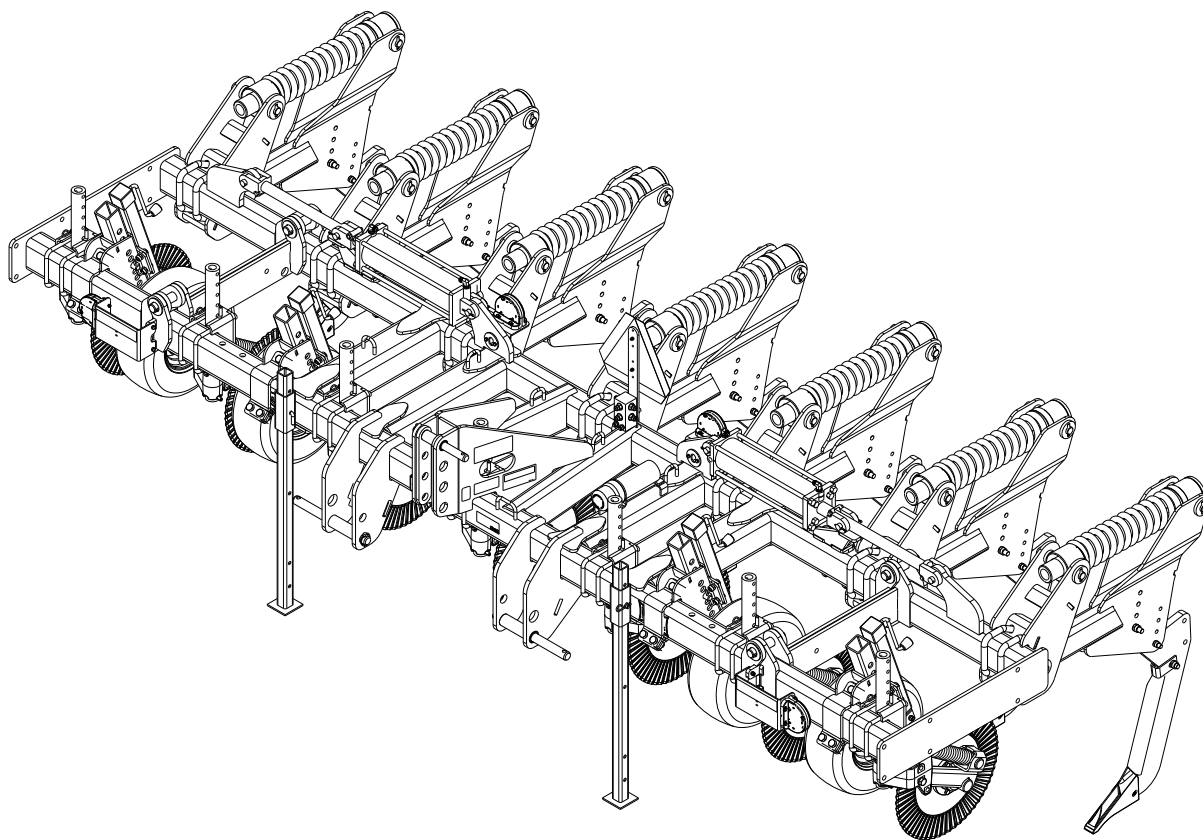




Zone Commander Model 2511 Parts Manual



LANDOLL COMPANY, LLC

1900 North Street

Marysville, Kansas 66508

(785) 562-5381

800-428-5655 ~ WWW.LANDOLL.COM

F-757R0

Table of Contents

1 Illustrated Parts List

| | |
|---|------------|
| Instructions For Ordering Parts | 1-1 |
| Narrow Frame Assembly - 3, 4, & 5 Shank | 1-2 |
| Standard Frame Assembly - 4, 5, 6, & 7 Shank | 1-3 |
| Folding Frame Assembly - 7, 8, & 9 Shank | 1-4 |
| Gauge Wheel Assembly | 1-6 |
| Auto Reset Clamp Assembly | 1-8 |
| Rigid Shear Bolt Clamp Assembly | 1-9 |
| 3/4 Shank Point Assembly | 1-10 |
| Straight Leg Shank Assembly | 1-12 |
| 1-1/4 Parabolic Shank Point Assembly | 1-14 |
| Coulter Assembly | 1-16 |
| Coulter Blade Assembly | 1-18 |
| Rear Hitch Assembly - Folding 8 Shank | 1-20 |
| Rear Hitch Assembly - Folding 7 & 9 Shank | 1-22 |
| Hydraulic Assembly - Folding 7, 8, & 9 Shank | 1-24 |
| Hydraulic Cylinder - 4 X 20 | 1-26 |
| Electrical Assembly - Narrow 5 Shank | 1-28 |
| Electrical Assembly - Standard 4 & 5 Shank | 1-30 |
| Electrical Assembly - Standard 6 & 7 Shank | 1-32 |
| Electrical Assembly - Standard 6 & 7 Shank | 1-34 |
| Electrical Assembly - Folding 7, 8, & 9 Shank | 1-36 |
| Decal Installation | 1-38 |

Illustrated Parts List

Instructions For Ordering Parts

ORDER PARTS FROM LANDOLL PARTS DISTRIBUTION CENTER

**** Repair parts must be ordered through an Authorized Dealer ****

PHONE NO: 1-800-423-4320 OR 1-785-562-5381
ORDER ONLINE: Dealer.landoll.com

FAX NO: 888-527-3909

IDENTIFICATION PLATE

The identification plate, which lists the model number and serial number, is located on the front of the frame (See Figure 1-1)

SERIAL NUMBER NOMENCLATURE

The serial number for the Zone Commander Model 2511 is located on the identification plate.

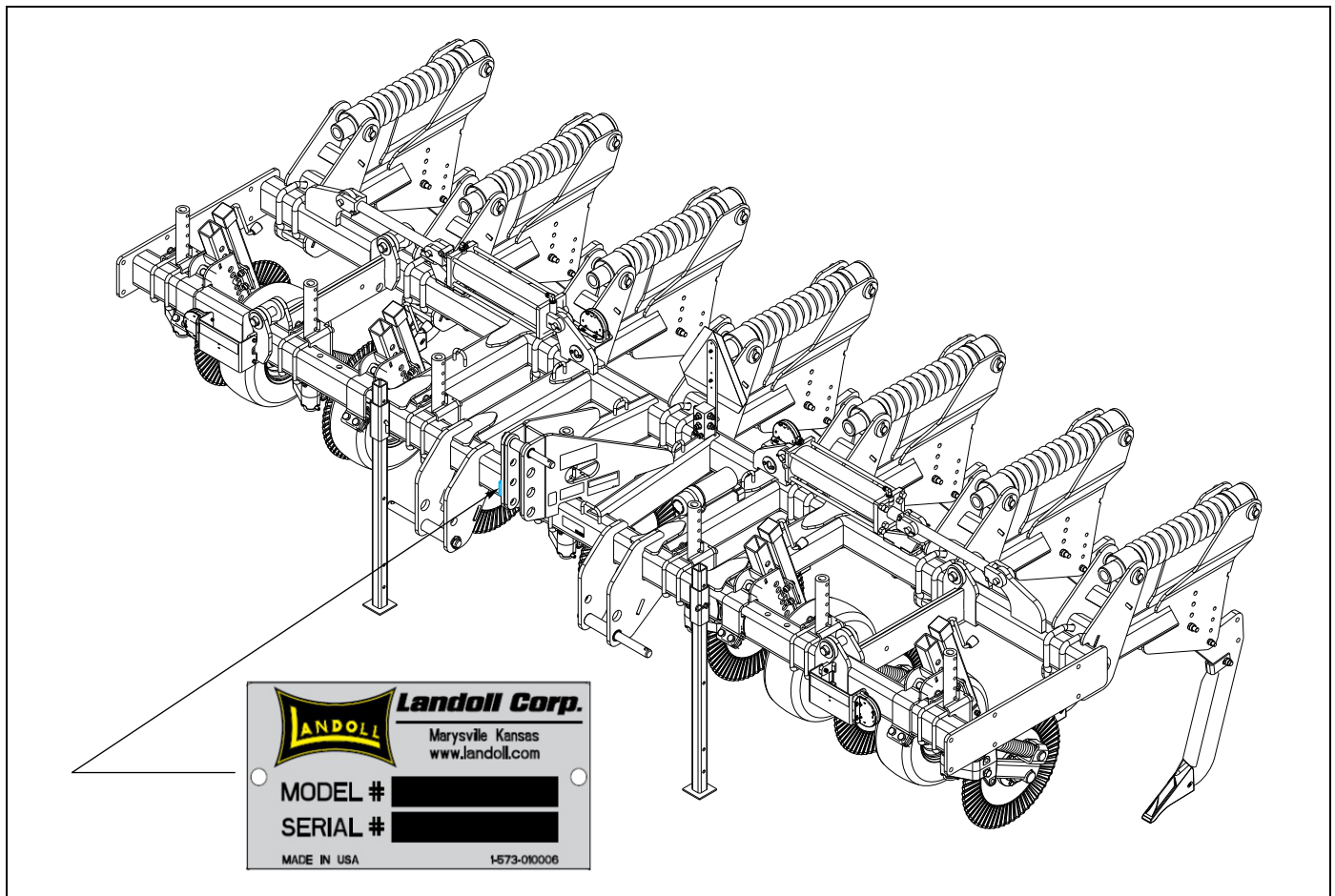


Figure 1-1: Identification Plate and Location

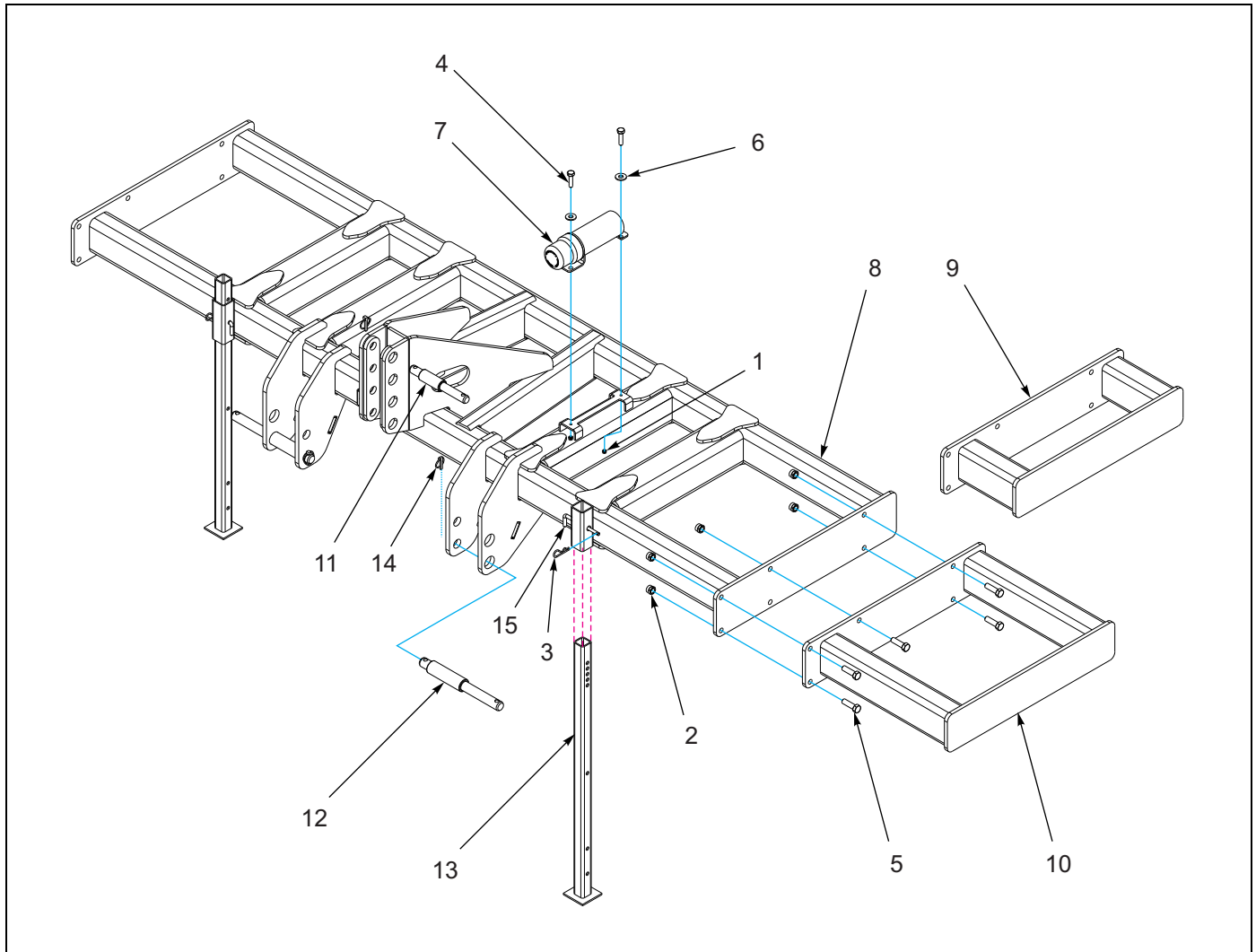


Figure 1-3: Standard Frame Assembly - 4, 5 6, & 7 Shank

Standard Frame Assembly - 4, 5, 6, & 7 Shank

| ITEM | PART NUMBER | DESCRIPTION | QTY. |
|------|-----------------|------------------------------------|------|
| 1 | 1-512-010005-01 | NUT, HEX, SLFLKG, 1/4-20 UNC, GRB | 2 |
| 2 | 1-512-010005-15 | NUT, HEX, SLFLKG, 3/4-10 UNC, GRB | 6 |
| 3 | 1-557-010013 | PIN, HAIR 3/16 DIA | 2 |
| 4 | 1-654-010047-06 | SCREW, HEX, 1/4-20 UNC X 1 GR5 | 2 |
| 5 | 1-654-010061-07 | SCREW, HEX, 3/4-10 UNC X 2-1/2 GR5 | 6 |
| 6 | 1-861-010032-07 | WASHER, FLAT 1/4W, ZP/CD | 4 |
| 7 | 142753 | MANUAL HOLDER, 3-1/4" ID | 1 |
| 8 | 179071 | FRAME WLDMT, 11' | 1 |
| 9 | 187878 | EXTENSION WLDMT, 12" RED | 1 |
| 10 | 187879 | EXTENSION WLDMT, 27" RED | 2 |
| 11 | 191655 | PIN, TOP LINK, CATII/III/IV-N | 1 |
| 12 | 191656 | PIN, HITCH, CAT II/III/IV-N | 2 |
| 13 | 2-423-010034 | JACK STAND WLDMT, H.C. | 2 |
| 14 | 2-557-010417 | PIN LYNCH, CAT III | 3 |
| 15 | 8-557-010095 | RIGID GAUGE WHEEL ADJUSTMENT PIN | 2 |

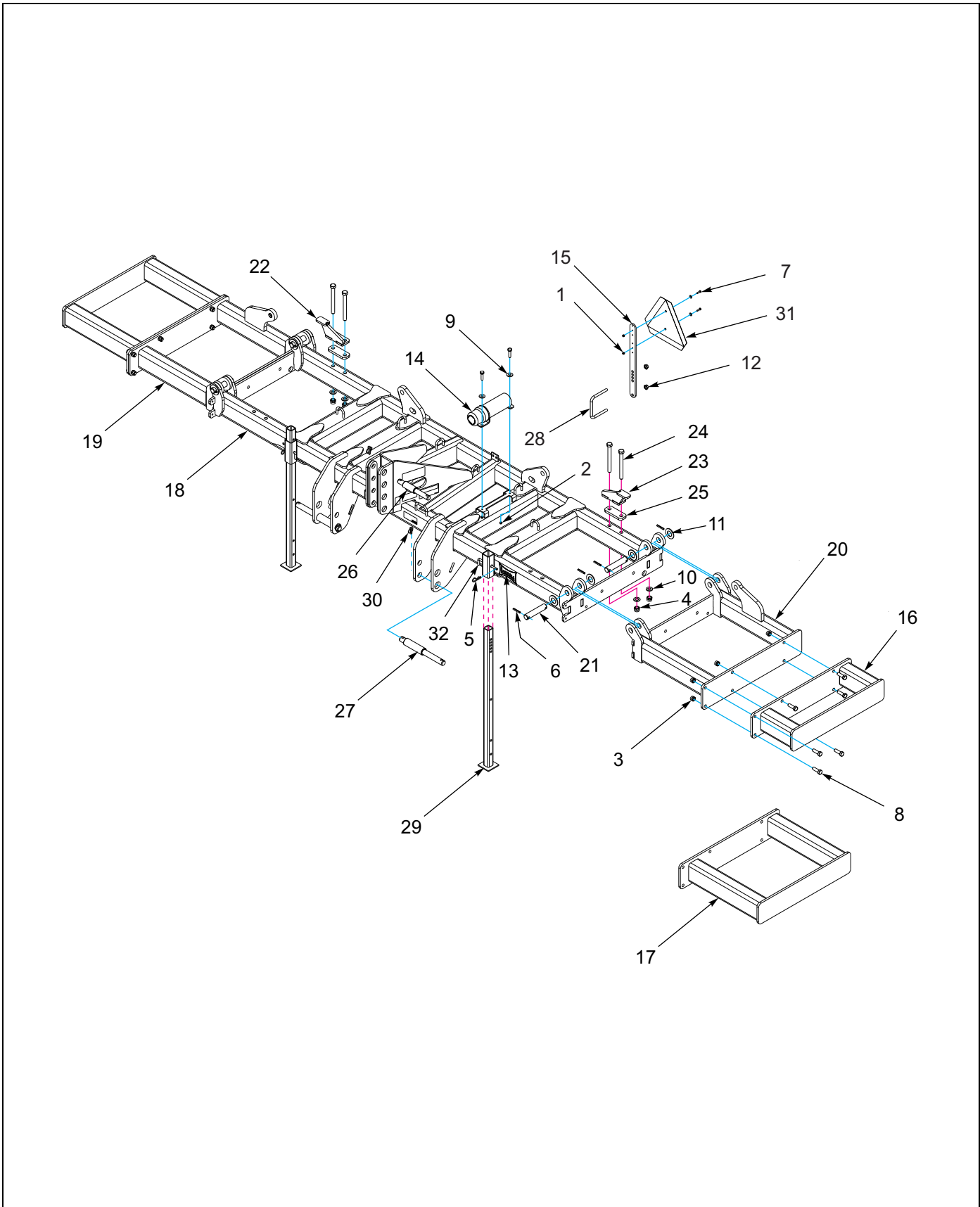


Figure 1-4: Folding Frame Assembly - 7, 8, & 9 Shank

Folding Frame Assembly - 7, 8, & 9 Shank

| ITEM | PART NUMBER | DESCRIPTION | QTY. |
|------|-----------------|--|------|
| 1 | 1-512-010004-05 | NUT, HEX, SLFLKG, 1/4-20 UNC, GRA | 2 |
| 2 | 1-512-010005-01 | NUT, HEX, SLFLKG, 1/4-20 GRB | 2 |
| 3 | 1-512-010005-15 | NUT, HEX, SLFLKG, 3/4-10 UNC, GRB | 12 |
| 4 | 1-512-010005-17 | NUT, HEX, SLFLKG, 7/8-9 UNC, GRB | 4 |
| 5 | 1-557-010013 | PIN, HAIR 3/16 DIA | 2 |
| 6 | 1-647-010004257 | PIN, ROLL SLOTTED, 3/8 X 2-1/2 | 8 |
| 7 | 1-654-010047-06 | SCREW, HEX, 1/4-20 UNC X 1 GR5 | 4 |
| 8 | 1-654-010061-06 | SCREW, HEX, 3/4-10 UNC X 2-1/4 GR5 | 12 |
| 9 | 1-861-010032-07 | WASHER, FLAT 1/4W, ZP/CD | 4 |
| 10 | 1-861-010032-22 | WASHER, FLAT 7/8N, ZP/CD | 4 |
| 11 | 1-861-010032-32 | WASHER, FLAT 1-1/2N, ZP/CD | 8 |
| 12 | 100827 | NUT, FLANGE HEAD, SERR, 5/8-11 UNC | 2 |
| 13 | 141259 | DECAL, LANDOLL, YELLOW (SEE PAGE1-39) | 2 |
| 14 | 142753 | MANUAL HOLDER, 3-1/4" ID | 1 |
| 15 | 164142 | BRACKET, SMV MOUNTING | 1 |
| 16 | 187878 | EXTENSION WLDMT, 12" RED | 1 |
| 17 | 187879 | EXTENSION WLDMT, 27" RED | 2 |
| 18 | 179968 | FRAME WLDMT, 2510F | 1 |
| 19 | 179969 | FRAME WLDMT, WING, RH | 1 |
| 20 | 179970 | FRAME WLDMT, WING, LH | 1 |
| 21 | 181140 | PIN, 1-1/2 X 7-3/8, H2 | 4 |
| 22 | 181147 | STOP WLDMT, REST RH | 1 |
| 23 | 181148 | STOP WLDMT, REST LH | 1 |
| 24 | 181151 | SCREW, HEX CAP, 7/8-9 X 8-1/2 UNC, GR5 | 4 |
| 25 | 185257 | SPACER, STOP MOUNT | 2 |
| 26 | 191655 | PIN, TOP LINK, CATII/III/IV-N | 1 |
| 27 | 191656 | PIN, HITCH, CAT II/III/IV-N | 2 |
| 28 | 2-102-010032 | U-BOLT, CENTER SHANK MOUNT | 1 |
| 29 | 2-423-010034 | JACK STAND WLDMT, H.C. | 2 |
| 30 | 2-557-010417 | PIN, LYNCH, CAT III | 3 |
| 31 | 70260977 | SMV EMBLEM | 1 |
| 32 | 8-557-010095 | RIGID GAUGE WHEEL ADJUSTMENT PIN | 2 |

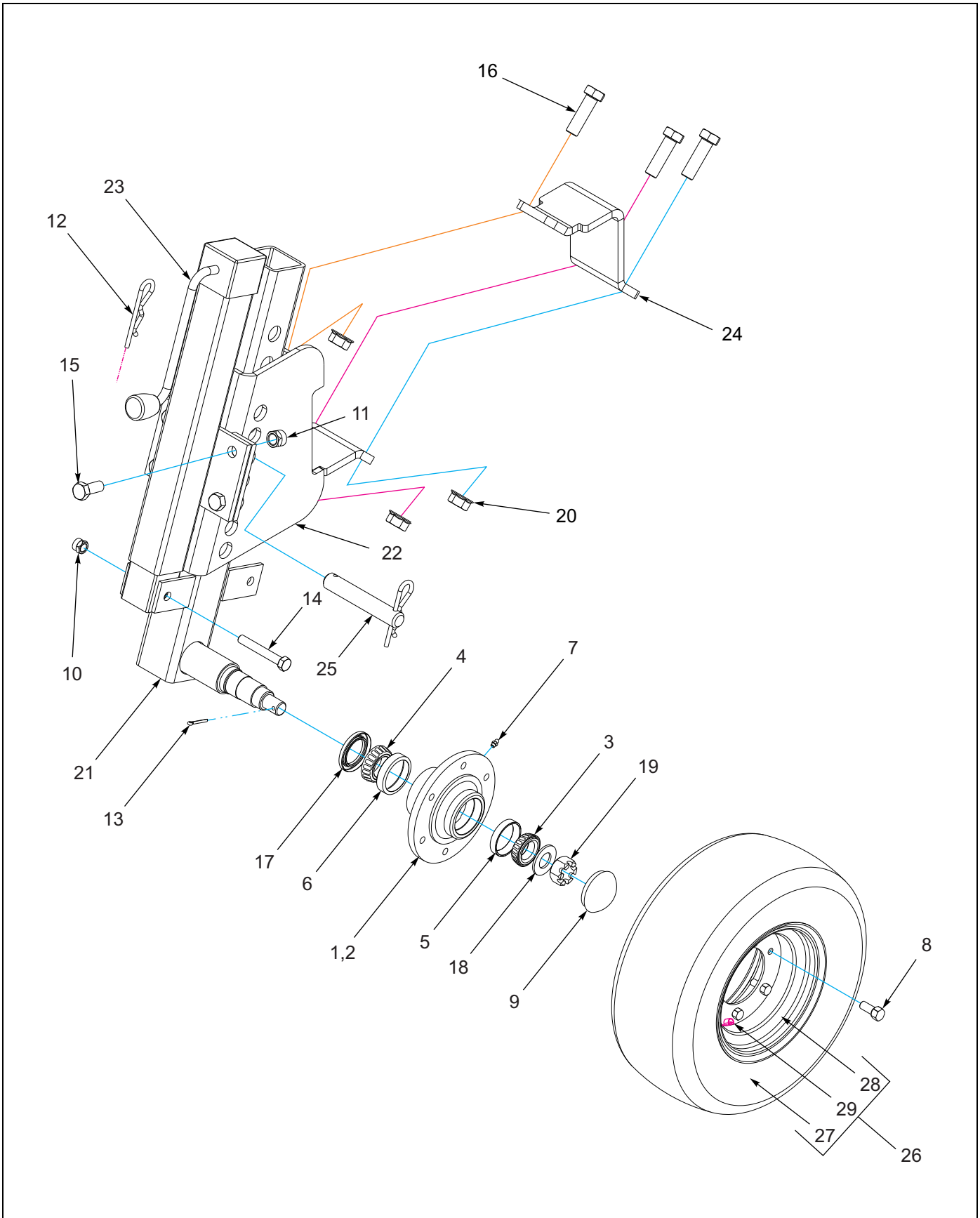


Figure 1-5: Gauge Wheel Assembly

Gauge Wheel Assembly

| ITEM | PART NUMBER | DESCRIPTION | QTY. |
|------|-----------------|--|------|
| 1 | 1-406-010010 | HUB ASSEMBLY, 6 BOLT (ITEMS 2-9) | 1 |
| 2 | 1-406-010012 | HUB, 6 BOLT W/ CUPS (ITEMS 5-7) | 1 |
| 3 | 1-076-010007 | CONE, OUTER BEARING | 1 |
| 4 | 1-076-010009 | CONE, INNER BEARING | 1 |
| 5 | 1-076-010010 | CUP, OUTER BEARING | 1 |
| 6 | 1-076-010012 | CUP, INNER BEARING | 1 |
| 7 | 1-298-010001-1 | GREASE FITTING, 1/4-28 | 1 |
| 8 | 1-104-010002 | BOLT, WHEEL | 6 |
| 9 | 1-161-010003 | CAP, DUST | 1 |
| 10 | 1-512-010005-09 | NUT, HEX SLFLKG, 1/2-13 UNC, GRB | 1 |
| 11 | 1-512-010005-13 | NUT, HEX SLFLKG, 5/8-11 UNC, GRB | 8 |
| 12 | 1-557-01220014 | PIN, HAIR 1/4 DIA | 2 |
| 13 | 1-557-010362-40 | PIN, COTTER 5/32 X 1-1/4 | 1 |
| 14 | 1-654-010055-11 | SCREW, HEX, 1/2-13 X 3-1/2 UNC, GR5 | 1 |
| 15 | 1-654-010059-03 | SCREW, HEX, 5/8-11 X 1-1/2 UNC, GR5 | 8 |
| 16 | 1-654-010061-07 | SCREW, HEX CAP, 3/4-10 X 2-1/2 GR5 | 3 |
| 17 | 1-659-010004 | SEAL, GREASE, 1-5/8 ID | 1 |
| 18 | 1-861-010004 | SPINDLE, WASHER, 7/8 | 1 |
| 19 | 100966 | NUT, HEX SLOTTED, 7/8-14 UNC | 1 |
| 20 | 103841 | NUT, FLANGE, PREVAILING TORQUE, 3/4-10 GRB | 3 |
| 21 | 108820 | SPINDLE WELDMENT | 1 |
| 22 | 108821 | CLAMP WELDMENT, GAUGE WHEEL | 1 |
| 23 | 109985 | JACK, 7000# SIDEWIND | 1 |
| 24 | 126895 | BRACKET, OUTER GAUGE WHEEL CLAMP | 1 |
| 25 | 8-557-010149 | PIN, 11N DIA X 6 | 1 |
| 26 | 2-798-010069 | TIRE & WHEEL ASSY FRT WHITE (ITEMS 27-29) | 1 |
| 27 | 160151 | TIRE, 20.5 X 8, 10/8 PLY | 1 |
| 28 | 2-870-010108 | WHEEL, 10 X 6 X 6 BOLT | 1 |
| 29 | TR416 | VALVE STEM | 1 |

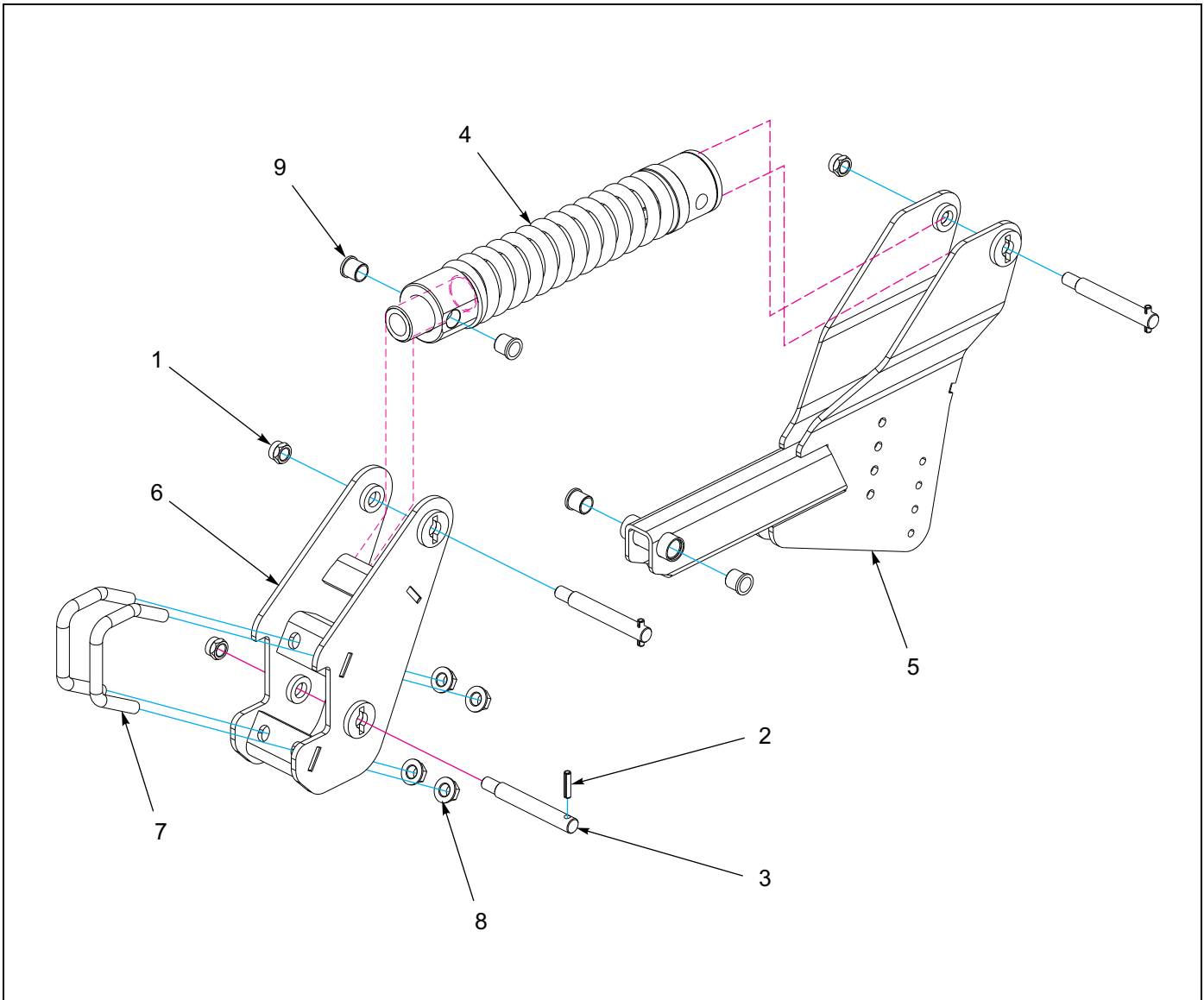


Figure 1-6: Auto Reset Clamp Assembly

Auto Reset Clamp Assembly

| ITEM | PART NO. | DESCRIPTION | QTY. |
|------|-----------------|------------------------------------|------|
| | 171811 | AUTO RESETCLAMP ASSEMBLY | |
| 1 | 1-512-010005-19 | NUT, HEX SLFLKG, 1-8 UNC, GRB | 3 |
| 2 | 141251 | PIN, SPRING SLOTTED 1/2 X 2-1/4 | 3 |
| 3 | 144457 | PIN, SHANK | 3 |
| 4 | 191067 | SPRING ASSEMBLY | 1 |
| 5 | 169484 | CLAMP, SHANK, 1-1/4 WELDMENT | 1 |
| 6 | 169486 | CLAMP, TOOLBAR, SHANK WELDMENT | 1 |
| 7 | 169492 | BOLT, SHANK CLAMP | 2 |
| 8 | 174732 | NUT, FLANGE HEAD, TOPLOCK, 1-8 UNC | 4 |
| 9 | 184413 | BEARING, FLANGE 1-1/4 | 4 |

NOTE: ONLY USE (#154172 - HEX SCREW, 5/8-11 UNC X 3-3/4 GR5) WHEN ATTACHING SHANKS TO THIS CLAMP.

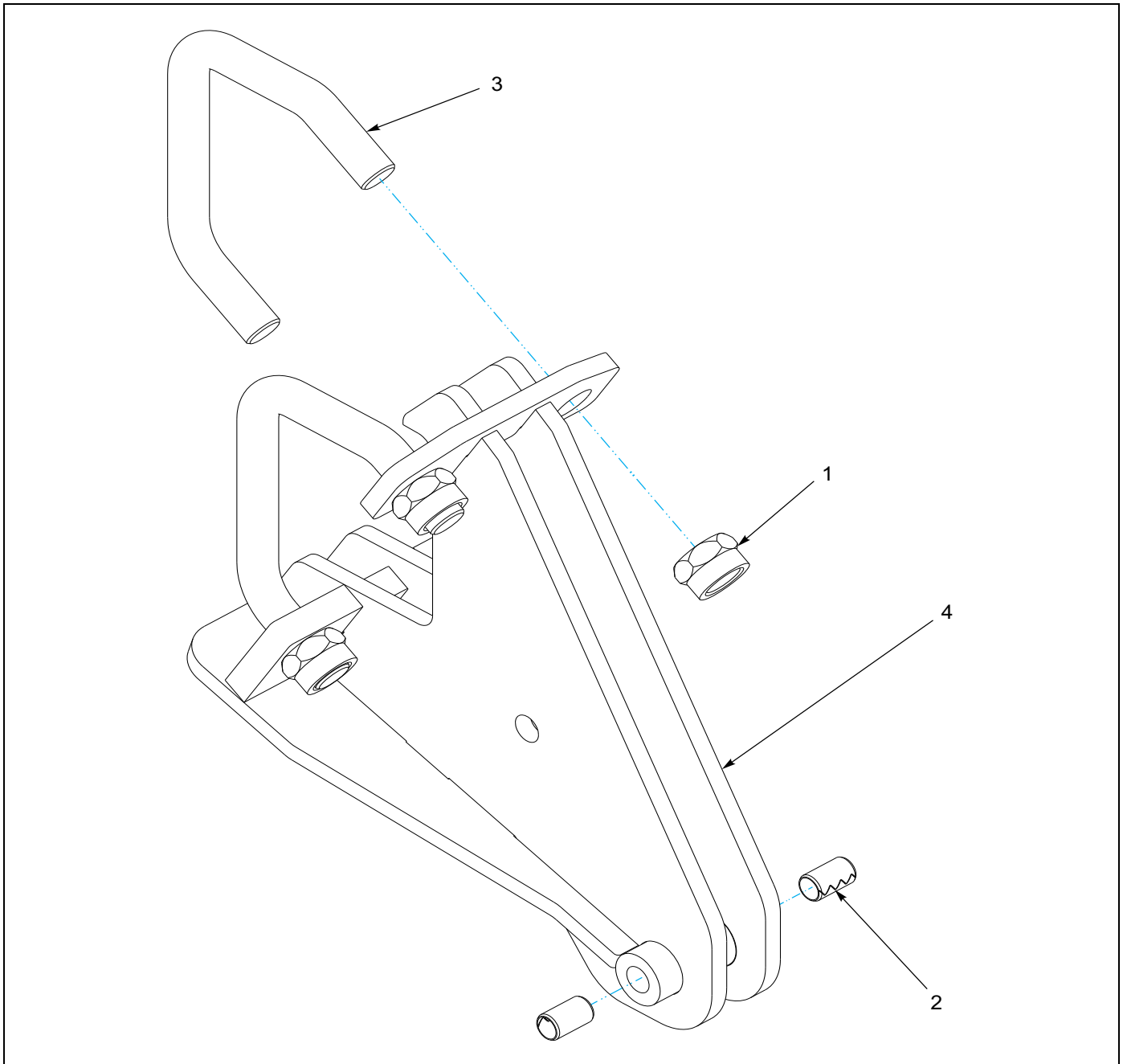


Figure 1-7: Rigid Shear Bolt Clamp Assembly

Rigid Shear Bolt Clamp Assembly

| ITEM | PART NUMBER | DESCRIPTION | QTY. |
|------|-------------|-----------------------------------|------|
| | 179563 | RIGID CLAMP ASSEMBLY | |
| 1 | 174732 | NUT, FLANGE HEAD TOPLOCK 1-8 GRB | 4 |
| 2 | 150244 | BUSHING, CONNEX 5/8 X 3/4 X 1-1/4 | 2 |
| 3 | 174749 | U-BOLT, 1" SHANK CLAMP | 2 |
| 4 | 179551 | CLAMP, SHEAR BOLT | 1 |

NOTE: ONLY USE (#172830 - HEX CAP SCREW, 5/8-11 UNC GR8) WHEN ATTACHING SHANKS TO THIS CLAMP.

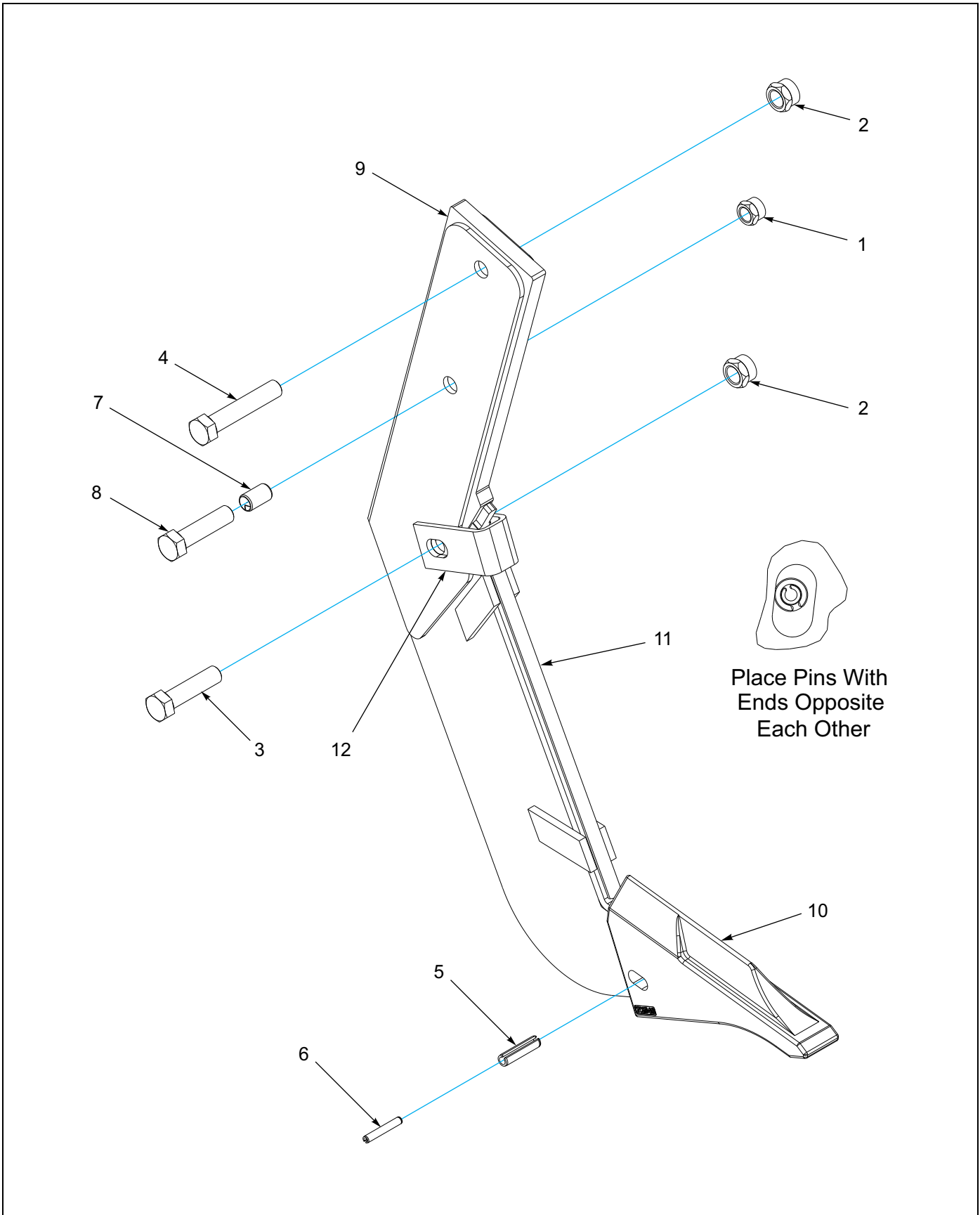


Figure 1-8: 3/4 Shank Point Assembly

3/4 Shank Point Assembly

| ITEM | PART NUMBER | DESCRIPTION | QTY. |
|------|-----------------|---|------|
| 1 | 1-512-010005-13 | NUT, HEX LOCK, 5/8-11 UNC, GRB | 1 |
| 2 | 1-512-010005-15 | NUT, HEX LOCK, 3/4-10 UNC, GRB | 2 |
| 3 | 1-654-010032-09 | SCREW, HEX, 3/4-10 X 3 GR8 | 1 |
| 4 | 1-654-010061-13 | SCREW, HEX, 3/4-10 X 4 GR5 | 3 |
| 5 | 127351 | PIN, SPRING SLOTTED, 1/2 X 2 | 1 |
| 6 | 147072 | PIN, SPRING SLOTTED, 5/16 X 2 | 1 |
| 7 | 150244 | BUSHING, CONNEX, 5/8 X 3/4 X 1-1/4 | 2 |
| 8 | 154172 | SCREW, HEX, 5/8-11 X 3-3/4 GR5 (USED W/ AUTO RESET CLAMP ONLY) | 1 |
| | 172830 | SCREW, HEX, 5/8-11 X 5-1/2 GR8 (USED W/ RIGID SHEAR BOLT CLAMP ONLY) | 1 |
| 9 | 193642 | SHANK, 3/4 WELDED | 1 |
| 10 | 7K548 | ZM CAST STEEL POINT | 1 |
| 11 | 1P846 | WEAR STRIP, NARROW 55 DEG | 1 |
| 12 | 6K796 | WEAR STRIP, BRACKET | 1 |

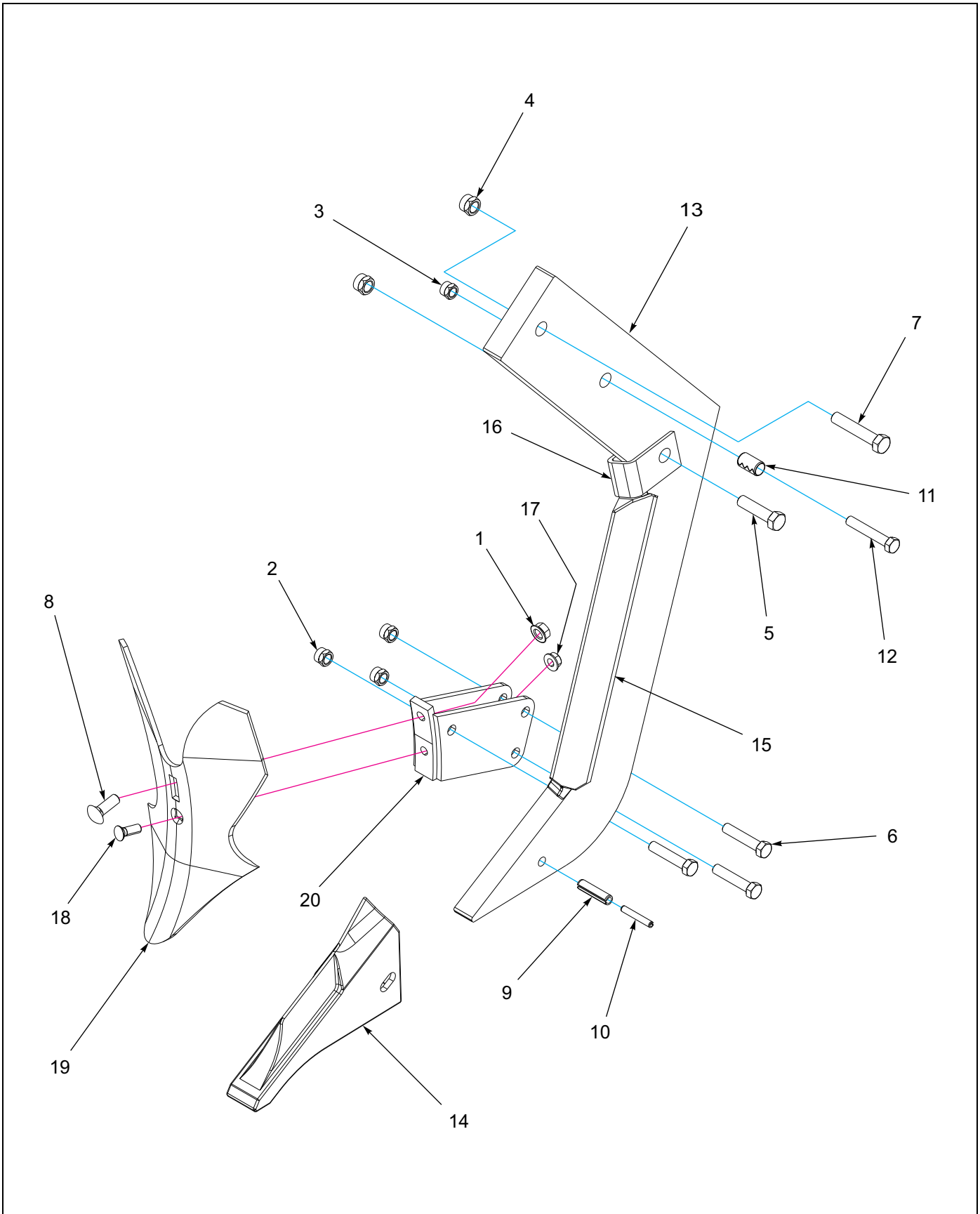


Figure 1-9: Straight Leg Shank Assembly Point Assembly

Straight Leg Shank Assembly

| ITEM | PART NUMBER | DESCRIPTION | QTY. |
|------|-----------------|---|------|
| 1 | 1-510-010003-09 | NUT, FLANGE HEAD, SERR, 1/2-13 UNC | 1 |
| 2 | 1-512-010005-09 | NUT, HEX, SLFLKG, 1/2-13 UNC, GRB | 3 |
| 3 | 1-512-010005-13 | NUT, HEX, SLFLKG, 5/8-11 GRB | 1 |
| 4 | 1-512-010005-15 | NUT, HEX LOCK 3/4-10 UNC, GRB | 2 |
| 5 | 1-654-010032-09 | SCREW, HEX, 3/4-10 X 3 GR8 | 1 |
| 6 | 1-654-010055-07 | SCREW, HEX, 1/2-13 UNC X 2-1/2 GR5 | 3 |
| 7 | 1-654-010061-13 | SCREW, HEX, 3/4-10 X 4 GR5 | 3 |
| 8 | 1-654-010070-03 | SCREW, RDH, SQ NK, 1/2-13 X 1-1/2 | 1 |
| 9 | 127351 | PIN, SPRING SLOTTED, 1/2 X 2 | 1 |
| 10 | 147072 | PIN, SPRING SLOTTED, 4/16 X 2 | 1 |
| 11 | 150244 | BUSHING, CONNEX, 5/8 X 3/4 X 1-1/4 | 2 |
| 12 | 154172 | SCREW, HEX, 5/8-11 X 3-3/4 GR5 (USED W/ AUTO RESET CLAMP ONLY) | 1 |
| | 172830 | SCREW, HEX CAP, 5/8-11 X 5 GR8 (USED W/ RIGID SHEAR BOLT CLAMP ONLY) | 1 |
| 13 | 195146 | SHANK, STRAIGHT LEG | 1 |
| 14 | 2P782 | CADI, V-CAST STEEL POINT | 1 |
| 15 | 2P783 | WEAR STRIP, CADI ZS/ZSR | 1 |
| 16 | 6K796 | WEAR STRIP, BRACKET | 1 |
| 17 | 4K551 | NUT, FLANGE, 7/16-14 | 1 |
| 18 | 5J425 | BOLT, PLOW, 7/16-14 X 1-1/4 | 1 |
| 19 | 6K478 | FURROWER, COVERBOARD | 1 |
| 20 | 9K874 | BRACKET, COVERBOARD | 1 |

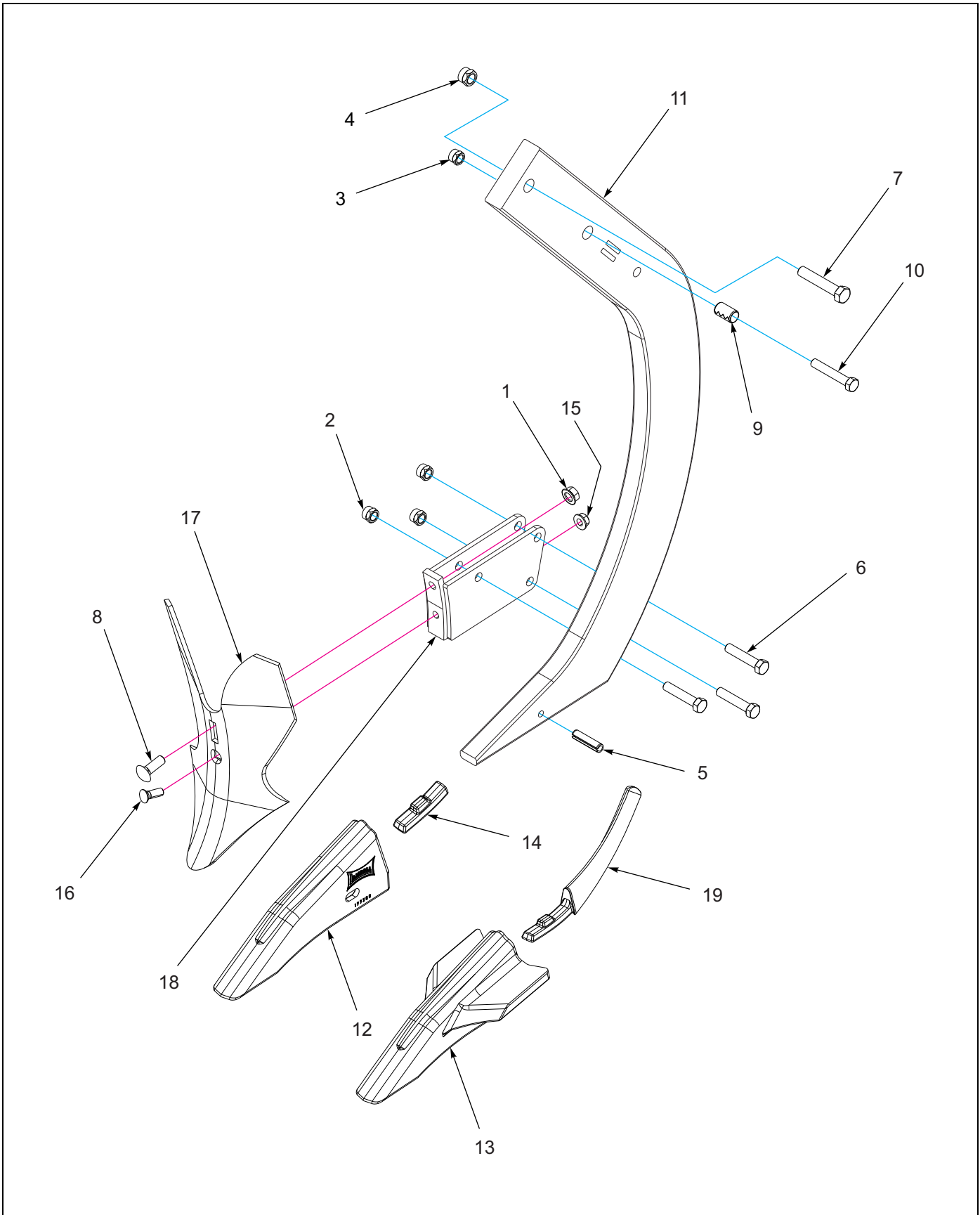


Figure 1-10: 1-1/4 Parabolic Shank Point Assembly

1-1/4 Parabolic Shank Point Assembly

| ITEM | PART NUMBER | DESCRIPTION | QTY. |
|------|-----------------|---|------|
| 1 | 1-510-010003-09 | NUT, FLANGE HEAD, SERR, 1/2-13 UNC | 1 |
| 2 | 1-512-010005-09 | NUT, HEX, SLFLKG, 1/2-13 UNC, GRB | 3 |
| 3 | 1-512-010005-13 | NUT, HEX, SLFLKG, 5/8-11 UNC, GRB | 1 |
| 4 | 1-512-010005-15 | NUT, HEX, LOCK 3/4-10 UNC, GRB | 2 |
| 5 | 1-647-010004255 | ROLL PIN, SLOTTED, 3/8 X 2 | 1 |
| 6 | 1-654-010055-07 | SCREW, HEX, 1/2-13 UNC X 2-1/2, GR5 | 3 |
| 7 | 1-654-010061-13 | SCREW, HEX, 3/4-10 X 4 GR5 | 3 |
| 8 | 1-654-010070-03 | SCREW, RDH, SQ NK, 1/2-13 X 1-1/2 | 1 |
| 9 | 150244 | BUSHING, CONNEX, 5/8 X 3/4 X 1-1/4 | 2 |
| 10 | 154172 | SCREW, HEX, 5/8-11 X 3-3/4 GR5 (USED W/ AUTO RESET CLAMP ONLY) | 1 |
| | 172830 | SCREW, HEX CAP, 5/8-11 X 5 GR8 (USED W/ RIGID SHEAR BOLT CLAMP ONLY) | 1 |
| 11 | 169493 | SHANK, 1-1/4 X 4, BOLT-IN 2410 | 1 |
| 12 | 177260 | POINT, CAST, V-CAP | 1 |
| 13 | 182228 | POINT, CADI, WINGED, 7 IN | 1 |
| 14 | 191121 | SPACER POINT | 1 |
| 15 | 4K551 | NUT, FLANGE, 7/16-14 | 1 |
| 16 | 5J425 | BOLT, PLOW, 7/16-14 X 1-1/4 | 1 |
| 17 | 6K478 | FURROWER, COVERBOARD | 1 |
| 18 | 185250 | BRACKET, COVERBOARD MOUNT | 1 |
| 19 | 177261 | CAST, WEARSHIN | 1 |

NOTE: SPACER POINT (191121) USED **WITH** FURROWER COVERBOARD (6K478)

WEARSHIN CAST (177261) USED **WITHOUT** FURROWER COVERBOARD (6K478)

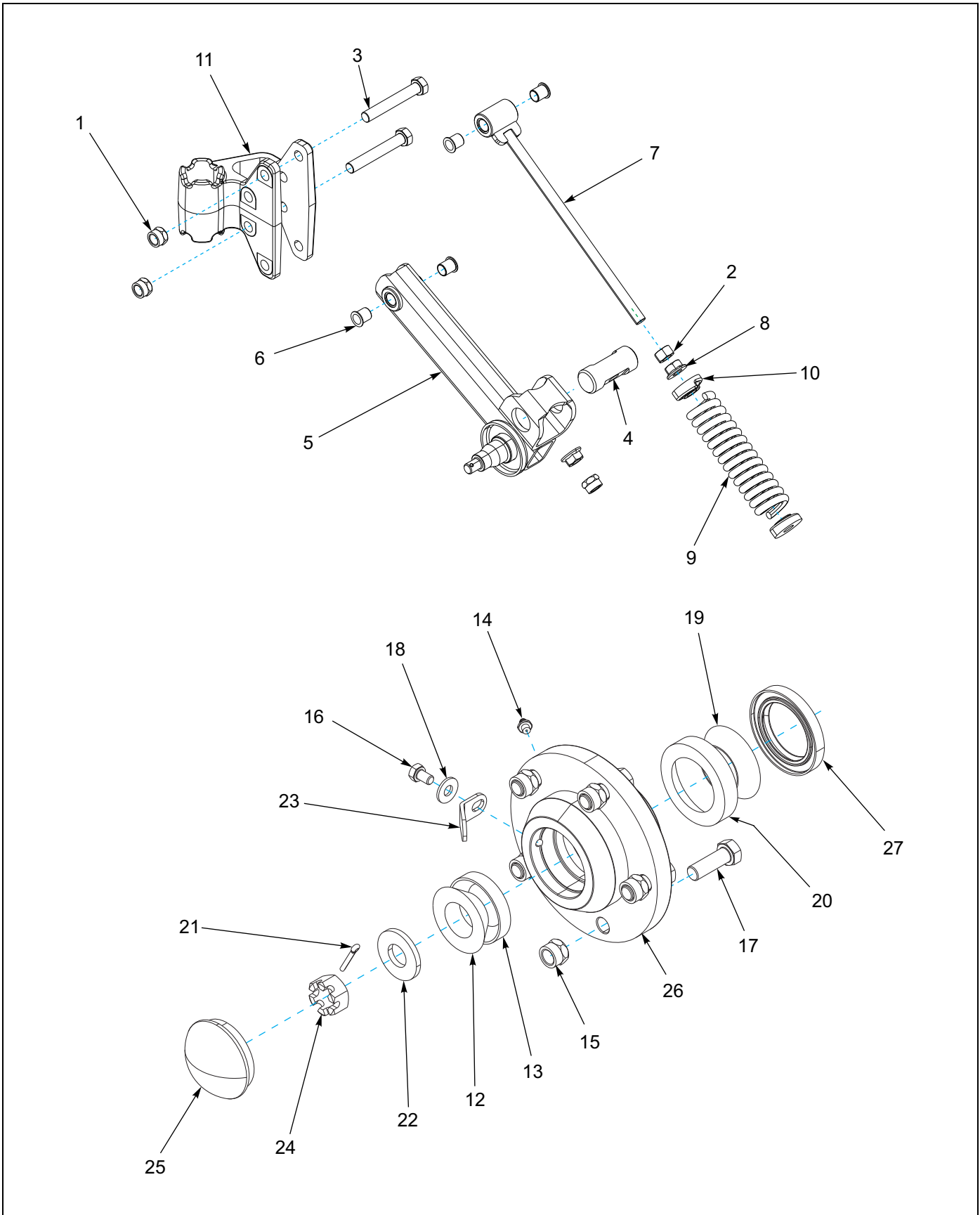


Figure 1-11: Coulters Assembly

Coulter Assembly

| ITEM | PART NUMBER | DESCRIPTION | QTY. |
|------|-----------------|---------------------------------------|------|
| 1 | 1-512-010005-09 | NUT, HEX, SLFLKG, 1/2-13 GRB | 2 |
| 2 | 1-512-010007-12 | NUT, HEX, 3/4-10 GR2 ZP | 2 |
| 3 | 1-654-010061-15 | SCREW, HEX CAP, 3/4-10 UNC X 5 GR5 | 2 |
| 4 | 182220 | PIVOT BOLT | 1 |
| 5 | 182222 | ARM WLDMT, COULTER, RH | 1 |
| | 182225 | ARM WLDMT, COULTER, LH | 1 |
| 6 | 182224 | BEARING, IGUS, FLANDGED, 7/8 X 3/4 X1 | 4 |
| 7 | 182233 | EYE BOLT, WELDMENT | 1 |
| 8 | 3K361 | NUT, FLANGE, PREVLING TRQ, 3/4-10 UNC | 2 |
| 9 | 4K076W | COMPRESSION SPRING, OUTER | 1 |
| 10 | 7J569 | CAP, 6D410 | 2 |
| 11 | 9K295PM | CASTING, COULTER SWIVEL, 7006926 | 1 |
| 12 | 1-076-010007 | CONE, INNER | 1 |
| 13 | 1-076-010010 | CUP, INNER | 1 |
| 14 | 1-298-010001-1 | ZERK FITTING, 1/4 SAE | 1 |
| 15 | 1-512-010005 | NUT, HEX, SLFLKG, 1/2-13 GRB | 5 |
| 16 | 1-654-010049-01 | SCREW, HEX CAP, 5/16-18 UNC X 1/2 | 1 |
| 17 | 1-654-010055-0 | SCREW, HEX CAP, 1/2-13 UNC X 2 GR5 | 5 |
| 18 | 1-861-010032-09 | WASHER, FLAT 5/16W, ZP/CD | 1 |
| 19 | 102498 | BEARING CONE, OUTER 1.625 | 1 |
| 20 | 102604 | BEARING CUP, OUTER | 1 |
| 21 | 110-0344 | COTTER PIN, 5/32 X 1 | 1 |
| 22 | 3J397 | WASHER | 1 |
| 23 | 3K613 | CAP STRAP | 12 |
| 24 | 3/4-16HSN | NUT, SLOTTED HEX | 1 |
| 25 | 6D337 | HUB CAP | 1 |
| 26 | 9K453 | HUB | 1 |
| 27 | 9K454 | NUT, HEX, SLFLKG, 1/2-13 GRB | 1 |

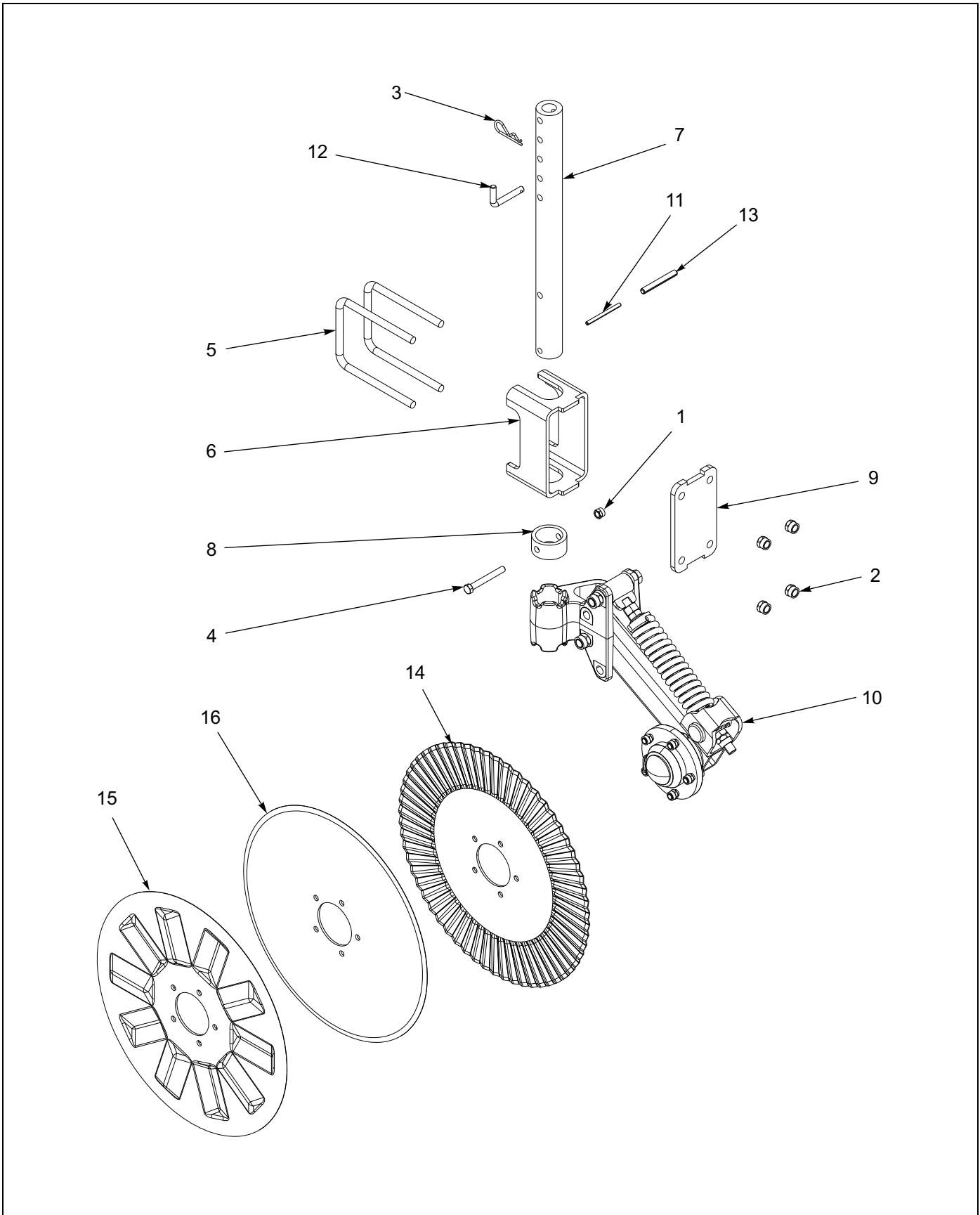


Figure 1-12: Coulter Blade Assembly

Coulter Blade Assembly

| ITEM | PART NUMBER | DESCRIPTION | QTY. |
|------|-----------------|------------------------------------|------|
| 1 | 1-512-010005-09 | NUT, HEX, SLFLKG, 1/2-13 GRB | 1 |
| 2 | 1-512-010005-13 | NUT, HEX, SLFLKG, 5/8-11 GRB | 4 |
| 3 | 1-557-010013 | PIN, HAIR 3/16 DIA | 1 |
| 4 | 1-654-010055-13 | SCREW, HEX CAP, 1/2-13 UNC X 4 GR5 | 1 |
| 5 | 149192 | U-BOLT, 6-11/16 CENTERS X 8-1/2 | 2 |
| 6 | 179082 | COULTER CLAMP TUBE | 1 |
| 7 | 179545 | COULTER ADJUST TUBE | 1 |
| 8 | 179546 | COULTER STOP | 1 |
| 9 | 179547 | CLAMP PLATE | 1 |
| 10 | 182241 | COULTER ASSEMBLY, HD RH | 1 |
| | 182242 | COULTER ASSEMBLY, HD LH | 1 |
| 11 | 5D954 | ROLL PIN, 5/16 X 4 | 1 |
| 12 | 8-557-010095 | PIN, RIGID GAUGE WHEEL, 800 | 1 |
| 13 | 8K756 | ROLL PIN, 1/2 X 4 | 1 |
| 14 | 9K289 | COULTER BLADE 22", RIPPLED | 1 |
| 15 | 179966 | COULTER BLADE 22", PYRAMID | 1 |
| 16 | 176846 | COULTER BLADE 22", SMOOTH | 1 |

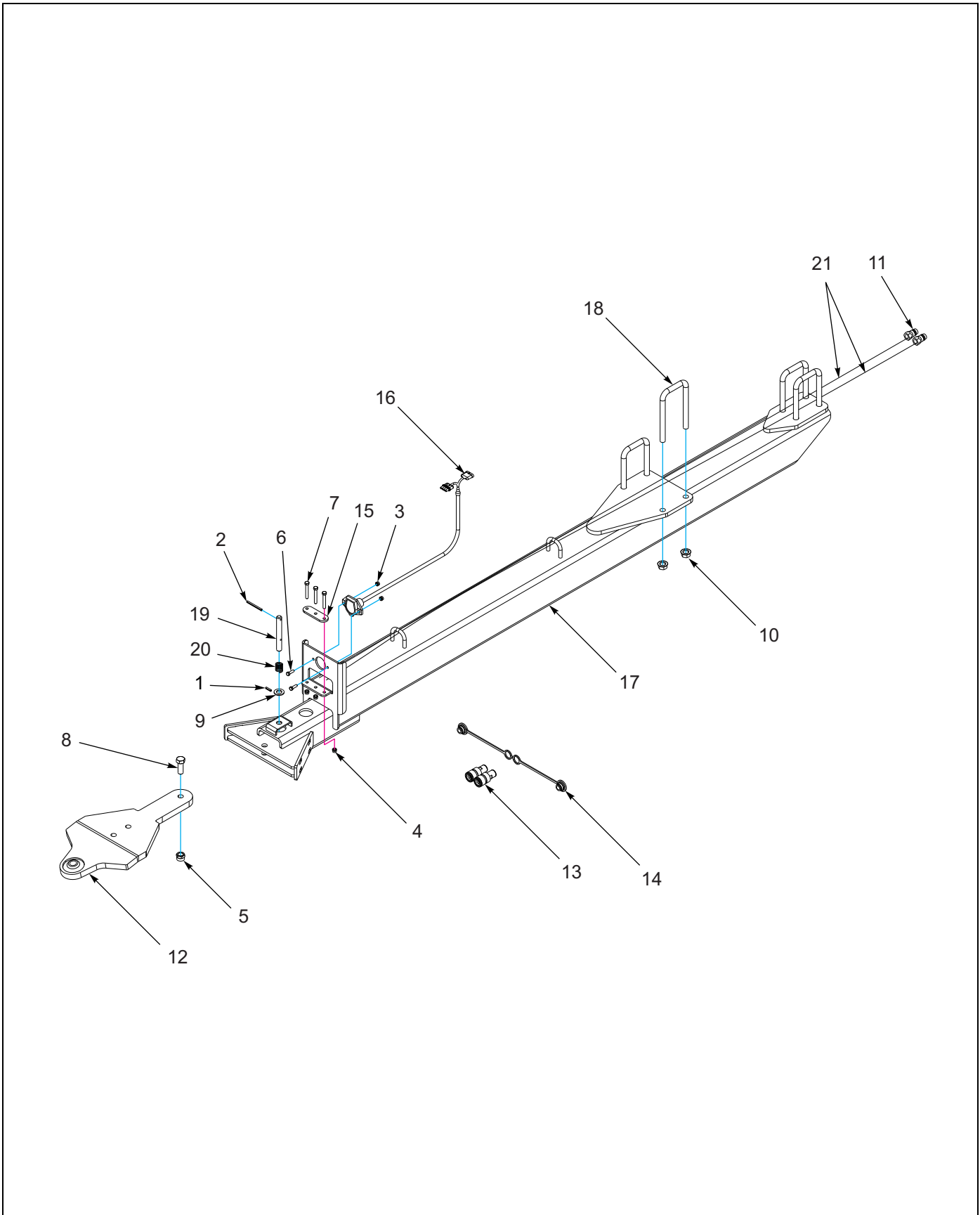


Figure 1-13: Rear Hitch Assembly - Folding 8 Shank

Rear Hitch Assembly - Folding 8 Shank

| ITEM | PART NUMBER | DESCRIPTION | QTY. |
|------|-----------------|--|------|
| 1 | 0600-250-01000 | PIN, ROLL ZP, 1/4 X 1 | 1 |
| 2 | 0600-250-03000 | PIN, ROLL ZP, 1/4 X 3 | 1 |
| 3 | 1-512-010005-03 | NUT, HEX, SLFLKG, 5/16-18 GRB | 2 |
| 4 | 1-512-010005-05 | NUT, HEX, SLFLKG, 3/8-16 GRB | 3 |
| 5 | 1-512-010005-15 | NUT, HEX, SLFLKG, 3/4-10 UNC, GRB | 1 |
| 6 | 1-654-010049-05 | SCREW, HEX CAP, 5/16-18 UNC X 1 GR5 | 2 |
| 7 | 1-654-010051-11 | SCREW, HEX CAP, 3/8-16 X 2-1/2 G5, ZP | 3 |
| 8 | 1-654-010061-05 | SCREW, HEX CAP, 3/4-10 UNC X 2 GR5, ZP | 1 |
| 9 | 1-861-010032-20 | WASHER, FLAT, ZP/CD, 3/4 N | 1 |
| 10 | 103841 | NUT, FLANGE, LINK, SERRATED 3/4-10 UNC | 8 |
| 11 | 141828 | COUPLER, MALE, 3/4-16 O-RING | 2 |
| 12 | 141868 | HITCH, REAR TOW BAR | 1 |
| 13 | 142668 | COUPLER FEMALE, 3/4-16 O-RING | 2 |
| 14 | 142669 | PLUG, COUPLER DUST | 2 |
| 15 | 142671 | PLATE, COUPLER | 1 |
| 16 | 143871 | HARNESS, TANDEM ADAPTER | 1 |
| 17 | 182261 | HITCH, REAR, 6, 8, WELDMENT | 1 |
| 18 | 1P042 | U-BOLT, 3/4-10 X 4.75 X 8.375 | 4 |
| 19 | 3-375-010371 | HITCH, PIN AGRI | 1 |
| 20 | CO-975-74-2000 | SPRING COMPRESSION | 1 |
| 21 | 182270 | HOSE ASSEMBLY, 3/8 X 255, -80RB/-80RB | 2 |

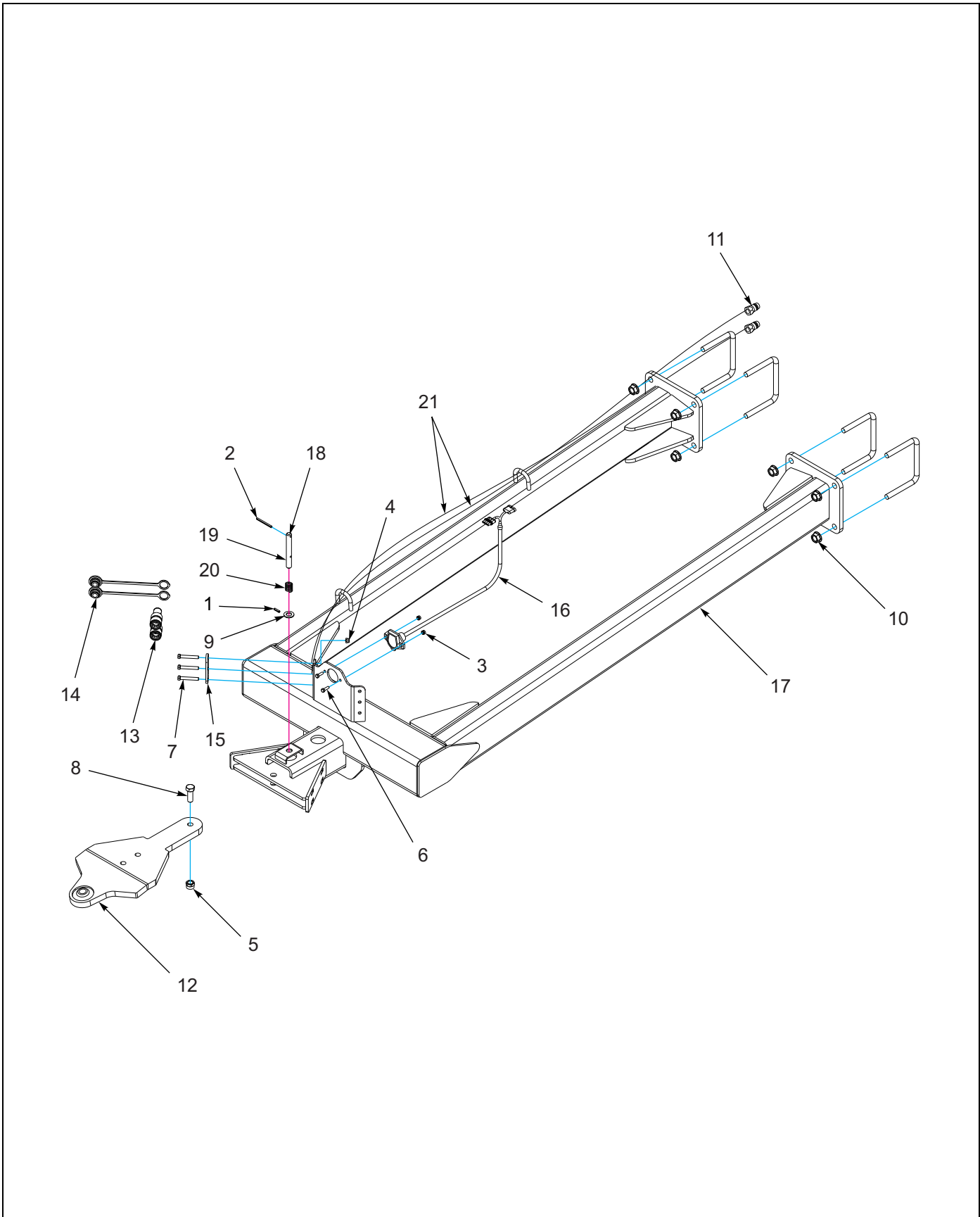


Figure 1-14: Rear Hitch Assembly - Folding 7 & 9 Shank

Rear Hitch Assembly - Folding 7 & 9 Shank

| ITEM | PART NUMBER | DESCRIPTION | QTY. |
|------|-----------------|--|------|
| 1 | 0600-250-01000 | PIN, ROLL ZP, 1/4 X 1 | 1 |
| 2 | 0600-250-03000 | PIN, ROLL ZP, 1/4 X 3 | 1 |
| 3 | 1-512-010005-03 | NUT, HEX, SLFLKG, 5/16-18 GRB | 2 |
| 4 | 1-512-010005-05 | NUT, HEX, SLFLKG, 3/8-16 GRB | 3 |
| 5 | 1-512-010005-15 | NUT, HEX, SLFLKG, 3/4-10 UNC, GRB | 1 |
| 6 | 1-654-010049-05 | SCREW, HEX CAP, 5/16-18 UNC X 1 GR5 | 2 |
| 7 | 1-654-010051-11 | SCREW, HEX CAP, 3/8-16 X 2-1/2 G5, ZP | 3 |
| 8 | 1-654-010061-05 | SCREW, HEX CAP, 3/4-10 UNC X 2 GR5, ZP | 1 |
| 9 | 1-861-010032-20 | WASHER, FLAT, ZP/CD, 3/4 N | 1 |
| 10 | 103841 | NUT, FLANGE, LINK, SERRATED 3/4-10 UNC | 8 |
| 11 | 141828 | COUPLER, MALE, 3/4-16 O-RING | 2 |
| 12 | 141868 | HITCH, REAR TOW BAR | 1 |
| 13 | 142668 | COUPLER FEMALE, 3/4-16 O-RING | 2 |
| 14 | 142669 | PLUG, COUPLER DUST | 2 |
| 15 | 142671 | PLATE, COUPLER | 1 |
| 16 | 143871 | HARNESS, TANDEM ADAPTER | 1 |
| 17 | 1822271 | HITCH, REAR, 5, 7, 9, WELDMENT | 1 |
| 18 | 1P042 | U-BOLT, 3/4-10 X 4.75 X 8.375 | 4 |
| 19 | 3-375-010371 | HITCH, PIN AGRI | 1 |
| 20 | CO-975-74-2000 | SPRING COMPRESSION | 1 |
| 21 | 182270 | HOSE ASSEMBLY, 3/8 X 255, -80RB/-80RB | 2 |

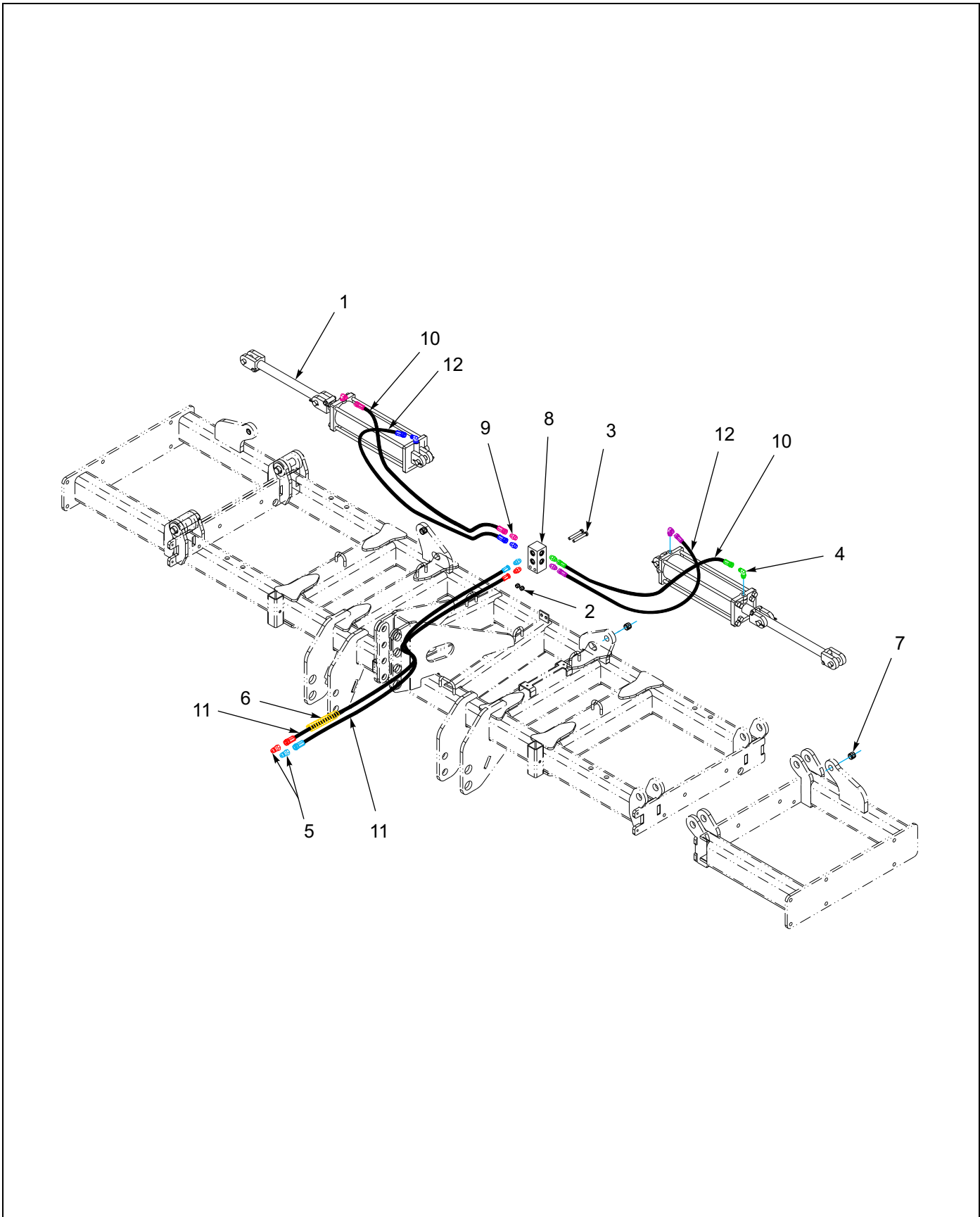


Figure 1-15: Hydraulic Assembly - Folding 7, 8, & 9 Shank

Hydraulic Assembly - Folding 7, 8, & 9 Shank

| ITEM | PART NUMBER | DESCRIPTION | QTY. |
|------|-----------------|--|------|
| 1 | 1-242-010180-3 | CYLINDER, HYDRAULIC, 4 X 20 STROKE (SEE PAGE 1-26) | 2 |
| 2 | 1-512-010005-09 | NUT, HEX SLFLKG, 1/2-13 UNC, GRB | 2 |
| 3 | 1-654-010055-11 | SCREW, HEX, 1/2-13 X 3-1/2 UNC, GR5 | 2 |
| 4 | 141826 | ELBOW 90, 3/4 O-RING, 3/4 JIC 1/16, RES | 4 |
| 5 | 141828 | COUPLER, MALE 3/4-16, O-RING | 2 |
| 6 | 155529 | HOSE WRAP, YELLOW | 1 |
| 7 | 2-150-010008 | BUSHING, 1-1/4" OD X 1" ID X 1" STEEL | 4 |
| 8 | 2-474-010022 | MANIFOLD, HYDRUALIC ASSEMBLY, 6 HOSE | 1 |
| 9 | 202702-8-8S | ADAPTER, #8 O-RING TO #8 TUBE | 6 |
| 10 | 116489 | HOSE ASSY, 3/8, #8 JIC SWIVEL - 64" | 2 |
| 11 | 141877 | HOSE ASSY, 3/8, #8 JIC X #8 O-RING - 75" | 2 |
| 12 | 71508992 | HOSE ASSY, 3/8, #8 JIC SWIVEL - 50" | 2 |

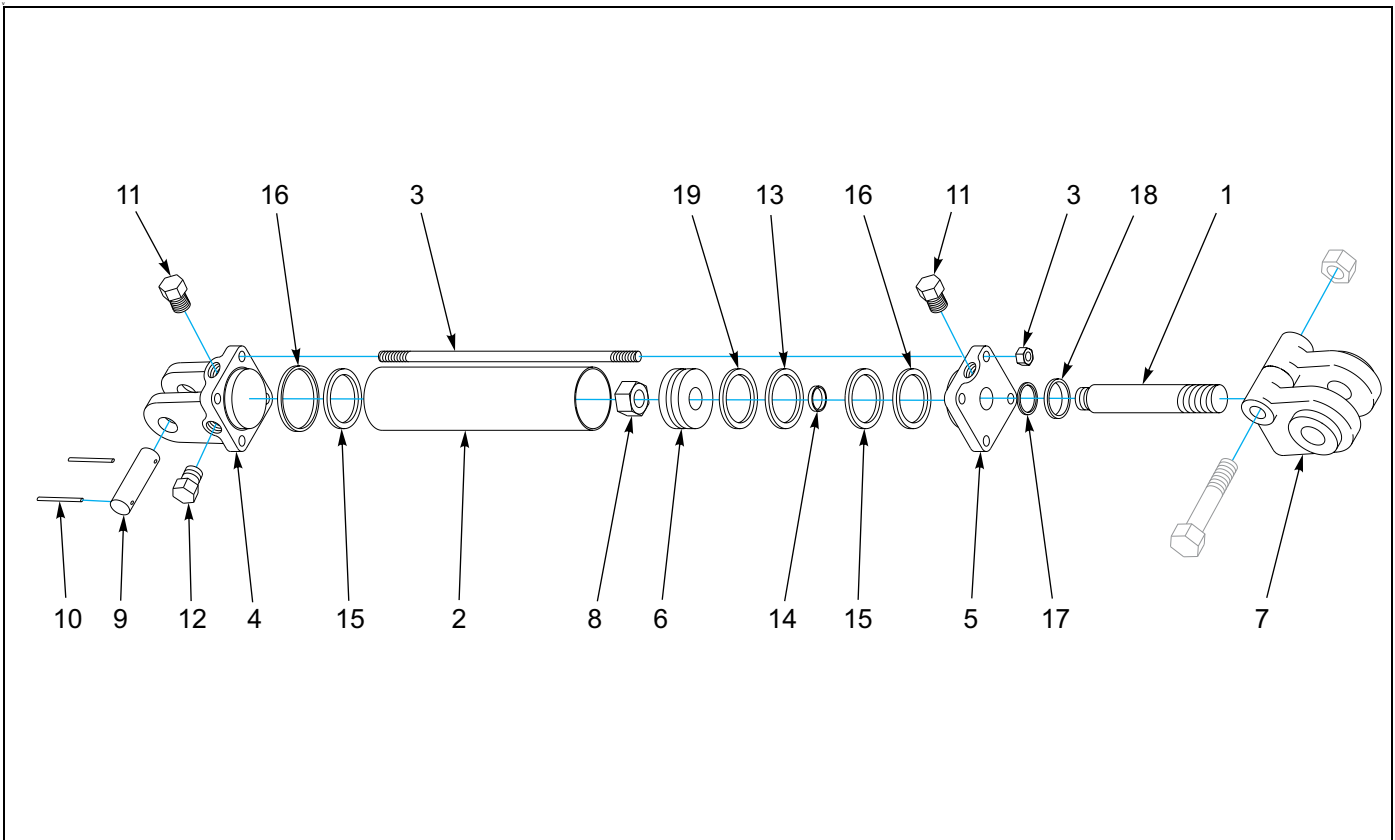


Figure 1-16: Hydraulic Cylinder - 4 X 20

Hydraulic Cylinder - 4 X 20

| ITEM | PART NUMBER | DESCRIPTION | QTY. |
|------|----------------|--|------|
| | 1-242-010180-3 | CYLINDER, HYDRAULIC, 4 X 20 STROKE, 3000 PSI | |
| 1 | 147372 | PISTON ROD | 1 |
| 2 | ----- | TUBE | 1 |
| 3 | ----- | TIEROD ASSEMBLY | 4 |
| 4 | ----- | BUTT | 1 |
| 5 | 111787 | BLAND ASSEMBLY | 1 |
| 6 | 111786 | PISTON | 1 |
| 7 | ----- | CLEVIS ASSEMBLY | 1 |
| 8 | ----- | LOCKOUT | 1 |
| 9 | ----- | CLEVIS PIN | 2 |
| 10 | ----- | COTTER PIN | 4 |
| 11 | ----- | PLASTIC PLUG | 2 |
| 12 | ----- | PORT PLUG | 1 |
| 13 | ----- | CROWN SEAL | 1 |
| 14 | ----- | O-RING | 1 |
| 15 | ----- | O-RING | 2 |
| 16 | ----- | BU-WASHER | 2 |
| 17 | ----- | U-CUP | 1 |
| 18 | ----- | WIPER | 1 |
| 19 | ----- | BEARING RING | 1 |
| | 147377 | PACKING KIT (ITEMS 13-19) | |

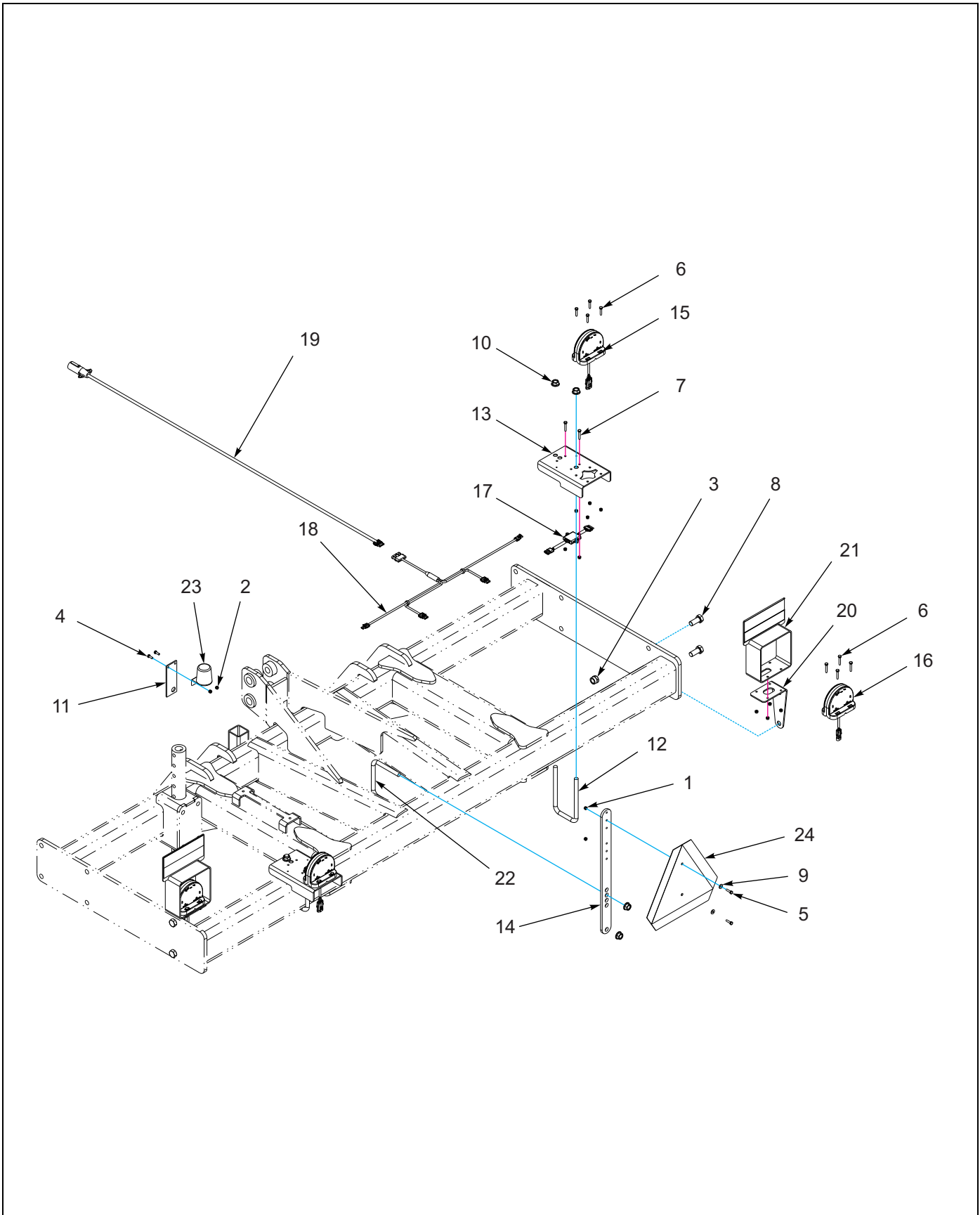


Figure 1-17: Electrical Assembly - Narrow 3 & 4 Shank

Electrical Assembly - Narrow 3 & 4 Shank

| ITEM | PART NUMBER | DESCRIPTION | QTY. |
|------|-----------------|------------------------------------|------|
| 1 | 1-512-010004-05 | NUT, HEX, SLFLKG, 1/4-20 UNC, GRA | 2 |
| 2 | 1-512-010005-01 | NUT, HEX, SLFLKG, 1/4-20 UNC, GRB | 20 |
| 3 | 1-512-010005-15 | NUT, HEX, SLFLKG 3/4-10 UNC, GRB | 4 |
| 4 | 1-654-010047-04 | SCREW, HEX, 1/4-20 UNC X 3/4 GR5 | 2 |
| 5 | 1-654-010047-06 | SCREW, HEX, 1/4-20 UNC X 1 GR5 | 2 |
| 6 | 1-654-010047-07 | SCREW, HEX, 1/4-20 UNC X 1-1/4 G5 | 8 |
| 7 | 1-654-010047-08 | SCREW, HEX, 1/4-20 UNC X 1-1/2 GR5 | 10 |
| 8 | 1-654-010061-04 | SCREW, HEX, 3/4-10 UNC X 1-3/4 GR5 | 4 |
| 9 | 1-861-010032-07 | WASHER, FLAT 1/4W, ZP/CD | 2 |
| 10 | 100827 | NUT, FLANGE HEAD, SERR, 5/8-11 UNC | 6 |
| 11 | 101404 | BRACKET, STOR-AWAY HOLDER, 2000 | 1 |
| 12 | 157648 | U-BOLT, HYDRAULIC MOUNT | 2 |
| 13 | 164138 | MOUNT, LIGHT TAIL | 2 |
| 14 | 164142 | BRACKET, SMV MOUNTING | 1 |
| 15 | 174435 | LAMP, AG RED, SINGLE LED | 2 |
| 16 | 174436 | LAMP, AG AMBER, SINGLE LED | 2 |
| 17 | 174437 | MODULE, AG FLASHER CONTROL | 1 |
| 18 | 175151 | HARNESS, LED WARNING LIGHTS | 1 |
| 19 | 178514 | HARNESS, 7 PIN/4PIN WP 10' | 1 |
| 20 | 182290 | BRACKET, LIGHT MOUNT | 2 |
| 21 | 182310 | BRACKET, LIGHT MOUNT REFLECTOR | 1 |
| 22 | 2-102-010032 | U-BOLT, CENTER SHANK MOUNT | 1 |
| 23 | 2-368-010287 | HARNESS, STOR-A-WAY | 1 |
| 24 | 70260977 | SMV EMBLEM | 1 |

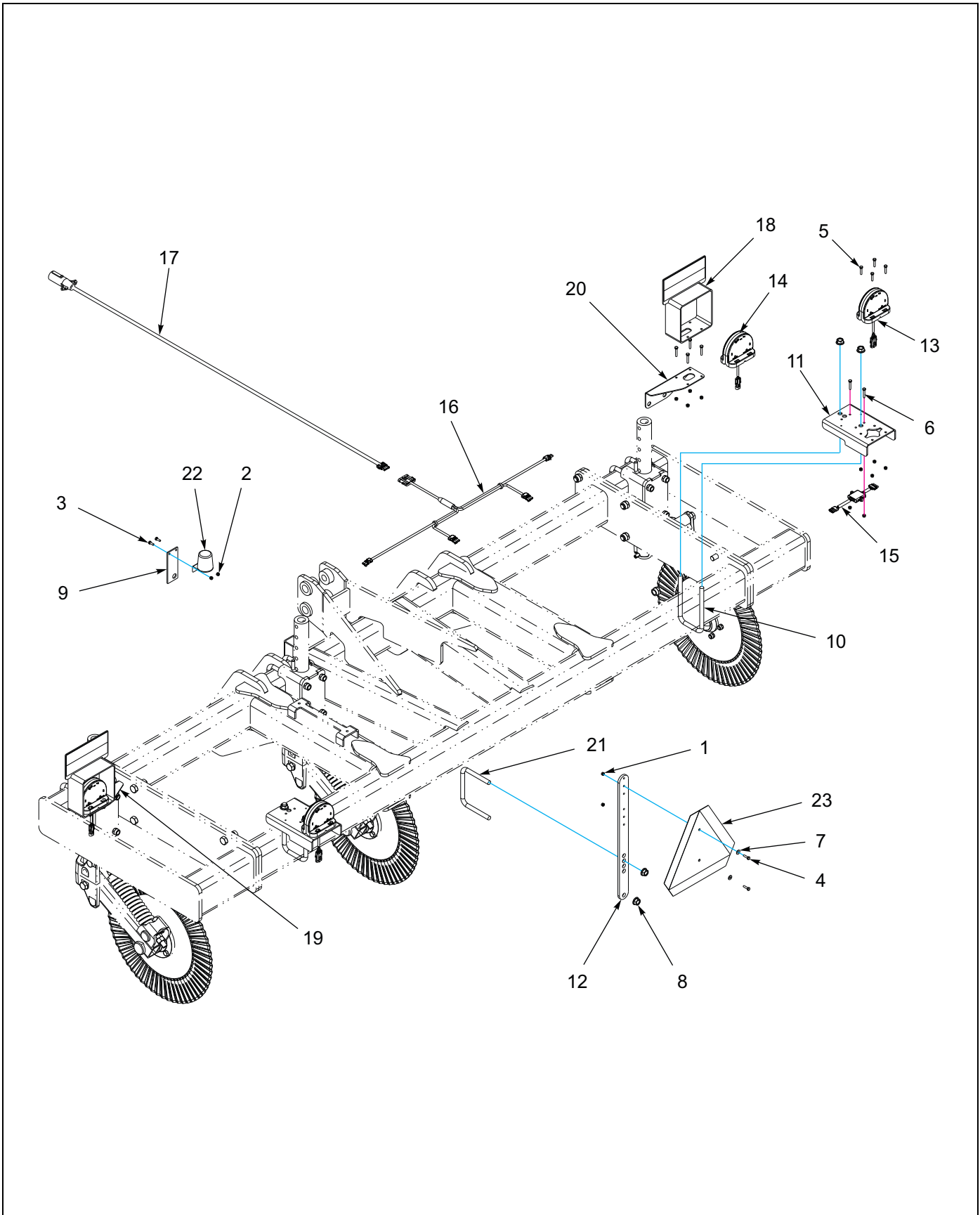


Figure 1-18: Electrical Assembly - Narrow 5 Shank

Electrical Assembly - Narrow 5 Shank

| ITEM | PART NUMBER | DESCRIPTION | QTY. |
|------|-----------------|------------------------------------|------|
| 1 | 1-512-010004-05 | NUT, HEX, SLFLKG, 1/4-20 UNC, GRA | 2 |
| 2 | 1-512-010005-01 | NUT, HEX, SLFLKG, 1/4-20 UNC, GRB | 20 |
| 3 | 1-654-010047-04 | SCREW, HEX, 1/4-20 UNC X 3/4 GR5 | 2 |
| 4 | 1-654-010047-06 | SCREW, HEX, 1/4-20 UNC X 1 GR5 | 2 |
| 5 | 1-654-010047-07 | SCREW, HEX, 1/4-20 UNC X 1-1/4 G5 | 8 |
| 6 | 1-654-010047-08 | SCREW, HEX, 1/4-20 UNC X 1-1/2 GR5 | 10 |
| 7 | 1-861-010032-07 | WASHER, FLAT 1/4W, ZP/CD | 2 |
| 8 | 100827 | NUT, FLANGE HEAD, SERR, 5/8-11 UNC | 6 |
| 9 | 101404 | BRACKET, STOR-AWAY HOLDER, 2000 | 1 |
| 10 | 157648 | U-BOLT, HYDRAULIC MOUNT | 2 |
| 11 | 164138 | MOUNT, LIGHT TAIL | 2 |
| 12 | 164142 | BRACKET, SMV MOUNTING | 1 |
| 13 | 174435 | LAMP, AG RED, SINGLE LED | 2 |
| 14 | 174436 | LAMP, AG AMBER, SINGLE LED | 2 |
| 15 | 174437 | MODULE, AG FLASHER CONTROL | 1 |
| 16 | 175151 | HARNESS, LED WARNING LIGHTS | 1 |
| 17 | 178514 | HARNESS, 7 PIN/4PIN WP 10' | 1 |
| 18 | 182310 | BRACKET, LIGHT MOUNT REFLECTOR | 2 |
| 19 | 185203 | BRACKET, LIGHT MOUNT LH | 1 |
| 20 | 185204 | BRACKET, LIGHT MOUNT RH | 1 |
| 21 | 2-102-010032 | U-BOLT, CENTER SHANK MOUNT | 1 |
| 22 | 2-368-010287 | HARNESS, STOR-A-WAY | 1 |
| 23 | 70260977 | SMV EMBLEM | 1 |

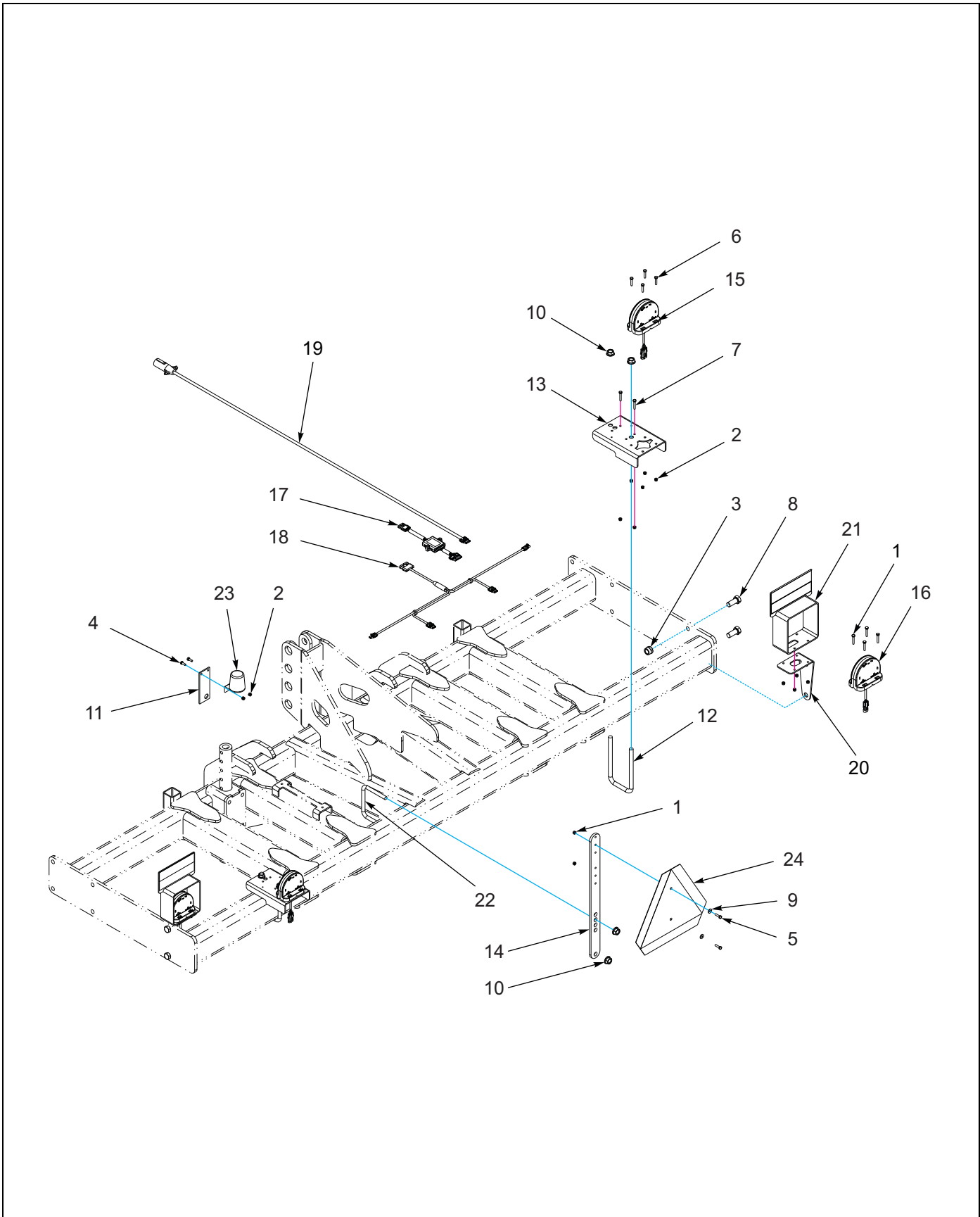


Figure 1-19: Electrical Assembly - Standard 4 & 5 Shank

Electrical Assembly - Standard 4 & 5 Shank

| ITEM | PART NUMBER | DESCRIPTION | QTY. |
|------|-----------------|------------------------------------|------|
| 1 | 1-512-010004-05 | NUT, HEX, SLFLKG, 1/4-20 UNC, GRA | 2 |
| 2 | 1-512-010005-01 | NUT, HEX, SLFLKG, 1/4-20 UNC, GRB | 20 |
| 3 | 1-512-010005-15 | NUT, HEX, SLFLKG 3/4-10 UNC, GRB | 4 |
| 4 | 1-654-010047-04 | SCREW, HEX, 1/4-20 UNC X 3/4 GR5 | 2 |
| 5 | 1-654-010047-06 | SCREW, HEX, 1/4-20 UNC X 1 GR5 | 2 |
| 6 | 1-654-010047-07 | SCREW, HEX, 1/4-20 UNC X 1-1/4 G5 | 8 |
| 7 | 1-654-010047-08 | SCREW, HEX, 1/4-20 UNC X 1-1/2 GR5 | 10 |
| 8 | 1-654-010061-04 | SCREW, HEX, 3/4-10 UNC X 1-3/4 GR5 | 4 |
| 9 | 1-861-010032-07 | WASHER, FLAT 1/4W, ZP/CD | 2 |
| 10 | 100827 | NUT, FLANGE HEAD, SERR, 5/8-11 UNC | 6 |
| 11 | 101404 | BRACKET, STOR-AWAY HOLDER, 2000 | 1 |
| 12 | 157648 | U-BOLT, HYDRAULIC MOUNT | 2 |
| 13 | 164138 | MOUNT, LIGHT TAIL | 2 |
| 14 | 164142 | BRACKET, SMV MOUNTING | 1 |
| 15 | 174435 | LAMP, AG RED, SINGLE LED | 2 |
| 16 | 174436 | LAMP, AG AMBER, SINGLE LED | 2 |
| 17 | 174437 | MODULE, AG FLASHER CONTROL | 1 |
| 18 | 175151 | HARNESS, LED WARNING LIGHTS | 1 |
| 19 | 178514 | HARNESS, 7 PIN/4PIN WP 10' | 1 |
| 20 | 182290 | BRACKET, LIGHT MOUNT | 2 |
| 21 | 182310 | BRACKET, LIGHT MOUNT REFLECTOR | 1 |
| 22 | 2-102-010032 | U-BOLT, CENTER SHANK MOUNT | 1 |
| 23 | 2-368-010287 | HARNESS, STOR-A-WAY | 1 |
| 24 | 70260977 | SMV EMBLEM | 1 |

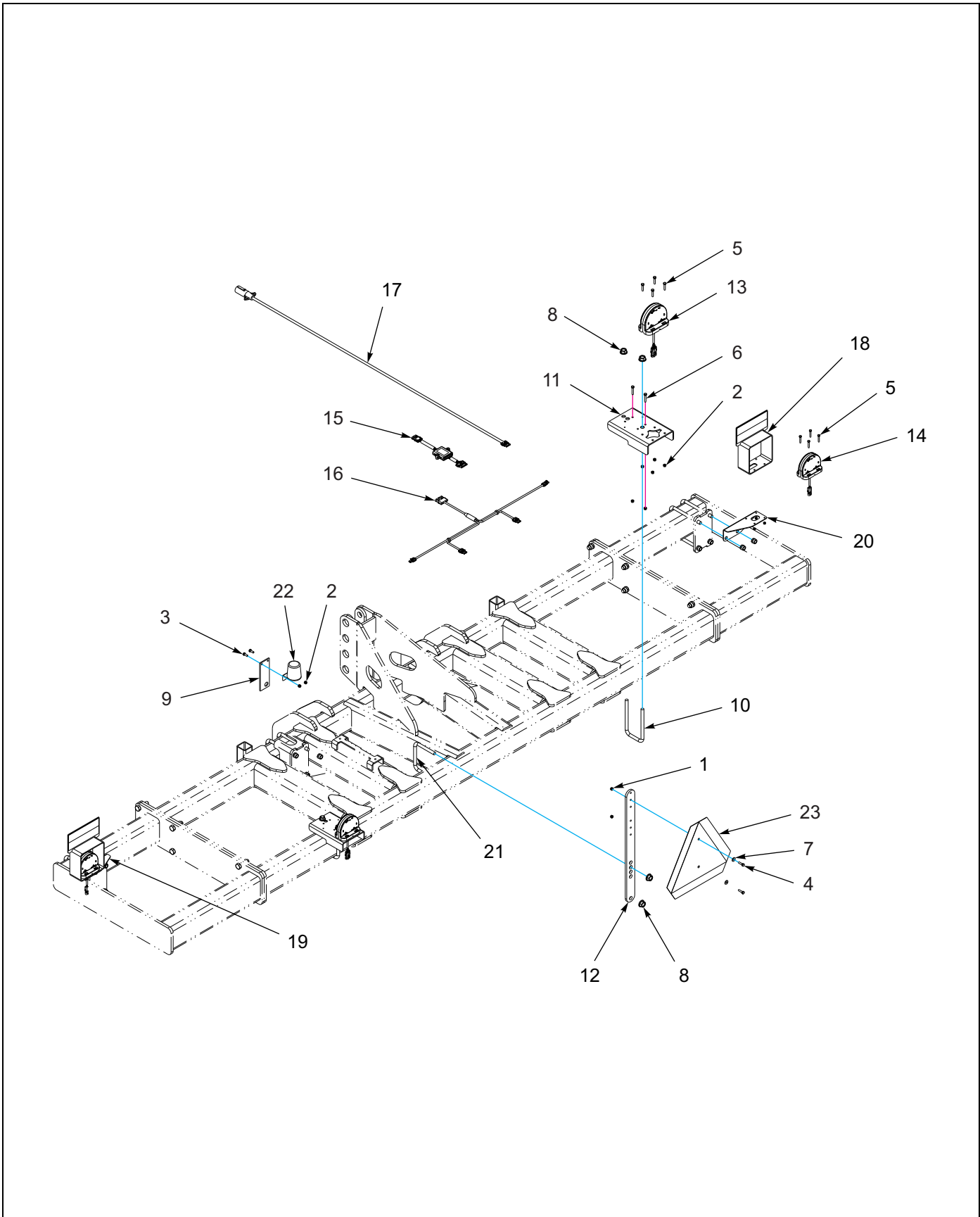


Figure 1-20: Electrical Assembly - Standard 6 & 7 Shank

Electrical Assembly - Standard 6 & 7 Shank

| ITEM | PART NUMBER | DESCRIPTION | QTY. |
|------|-----------------|------------------------------------|------|
| 1 | 1-512-010004-05 | NUT, HEX, SLFLKG, 1/4-20 UNC, GRA | 2 |
| 2 | 1-512-010005-01 | NUT, HEX, SLFLKG, 1/4-20 UNC, GRB | 20 |
| 3 | 1-654-010047-04 | SCREW, HEX, 1/4-20 UNC X 3/4 GR5 | 2 |
| 4 | 1-654-010047-06 | SCREW, HEX, 1/4-20 UNC X 1 GR5 | 2 |
| 5 | 1-654-010047-07 | SCREW, HEX, 1/4-20 UNC X 1-1/4 G5 | 8 |
| 6 | 1-654-010047-08 | SCREW, HEX, 1/4-20 UNC X 1-1/2 GR5 | 10 |
| 7 | 1-861-010032-07 | WASHER, FLAT 1/4W, ZP/CD | 2 |
| 8 | 100827 | NUT, FLANGE HEAD, SERR, 5/8-11 UNC | 6 |
| 9 | 101404 | BRACKET, STOR-AWAY HOLDER, 2000 | 1 |
| 10 | 157648 | U-BOLT, HYDRAULIC MOUNT | 2 |
| 11 | 164138 | MOUNT, LIGHT TAIL | 2 |
| 12 | 164142 | BRACKET, SMV MOUNTING | 1 |
| 13 | 174435 | LAMP, AG RED, SINGLE LED | 2 |
| 14 | 174436 | LAMP, AG AMBER, SINGLE LED | 2 |
| 15 | 174437 | MODULE, AG FLASHER CONTROL | 1 |
| 16 | 175151 | HARNESS, LED WARNING LIGHTS | 1 |
| 17 | 178514 | HARNESS, 7 PIN/4PIN WP 10' | 1 |
| 18 | 182310 | BRACKET, LIGHT MOUNT REFLECTOR | 2 |
| 19 | 185203 | BRACKET, LIGHT MOUNT LH | 1 |
| 20 | 185204 | BRACKET, LIGHT MOUNT RH | 1 |
| 21 | 2-102-010032 | U-BOLT, CENTER SHANK MOUNT | 1 |
| 22 | 2-368-010287 | HARNESS, STOR-A-WAY | 1 |
| 23 | 70260977 | SMV EMBLEM | 1 |

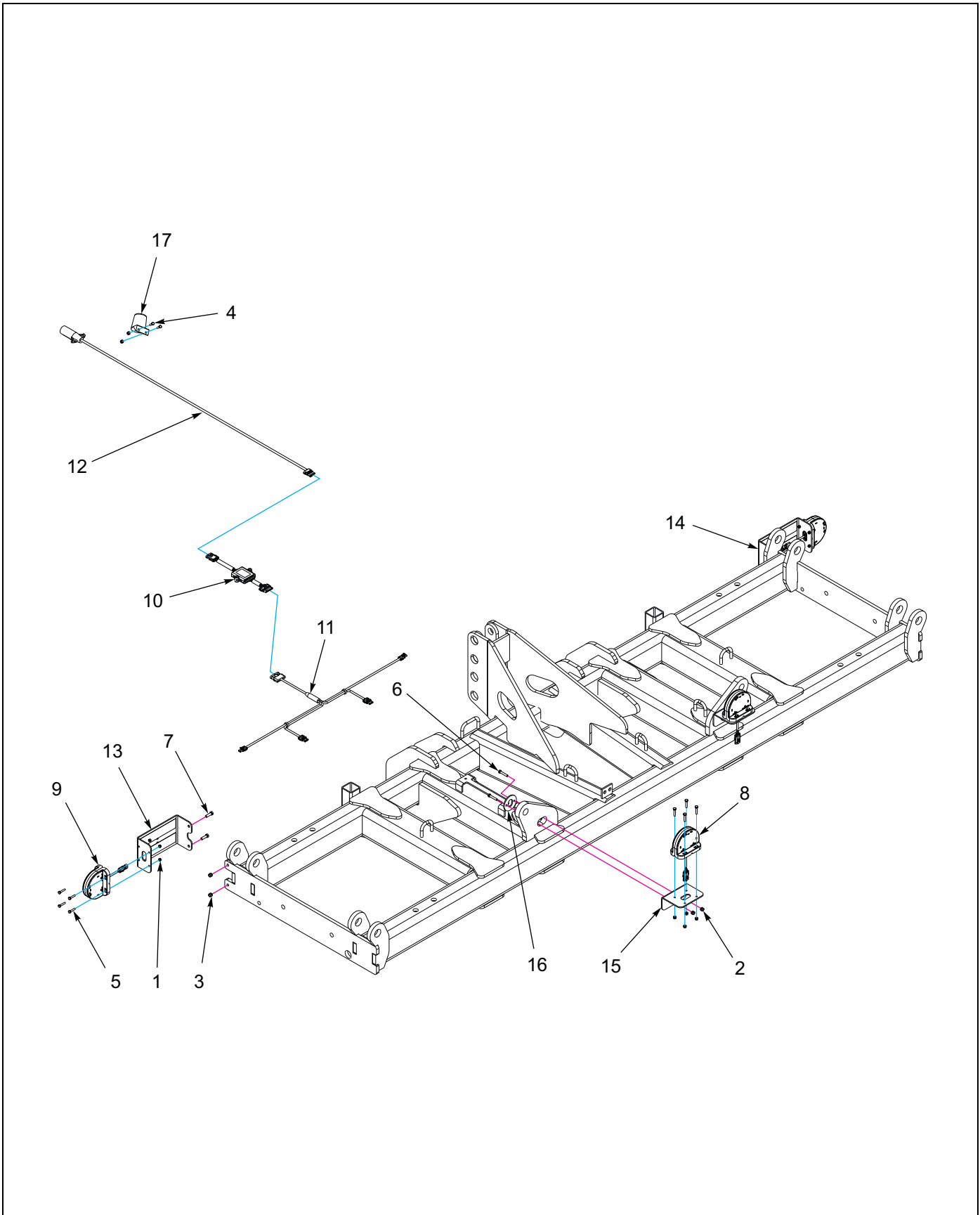
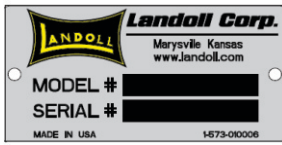


Figure 1-21: Electrical Assembly - Folding 7, 8, & 9 Shank

Electrical Assembly - Folding 7, 8, & 9 Shank

| ITEM | PART NUMBER | DESCRIPTION | QTY. |
|------|-----------------|-------------------------------------|------|
| 1 | 1-512-010005-01 | NUT, HEX, SLFLKG GRB 1/4-20 | 18 |
| 2 | 1-512-010005-03 | NUT, HEX, SLFLKG GRB 5/16-18 | 4 |
| 3 | 1-512-010005-05 | NUT, HEX, SLFLKG GRB 3/8-16 | 4 |
| 4 | 1-654-010047-05 | SCREW, HEX CAP, 1/4-20 UNC GR5 | 2 |
| 5 | 1-654-010047-07 | SCREW, HEX, 1/4-20 UNC X 1-1/4 G5 | 16 |
| 6 | 1-654-010049-08 | SCREW, HEX CAP, 5/16-18 UNC X 1-3/4 | 4 |
| 7 | 1-654-010051-06 | SCREW, HEX CAP, 3/8-16 UNC X 1-1/4 | 4 |
| 8 | 174435 | LAMP, AG RED, SINGLE LED | 2 |
| 9 | 174436 | LAMP, AG AMBER, SINGLE LED | 2 |
| 10 | 174437 | MODULE, AG FLASHER CONTROL | 1 |
| 11 | 175151 | HARNESS, LED WARNING LIGHTS | 1 |
| 12 | 178514 | HARNESS, 7 PIN/4PIN WP 10' | 1 |
| 13 | 181143 | BRACKET, LIGHT MOUNT, LH | 1 |
| 14 | 181144 | BRACKET, LIGHT MOUNT, RH | 1 |
| 15 | 181154 | BRACKET, LIGHT MOUNT | 2 |
| 16 | 182231 | WASHER RETAINER | 2 |
| 17 | 2-368-010287 | HARNESS, STOR-A-WAY | 1 |



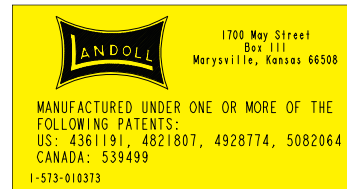
1



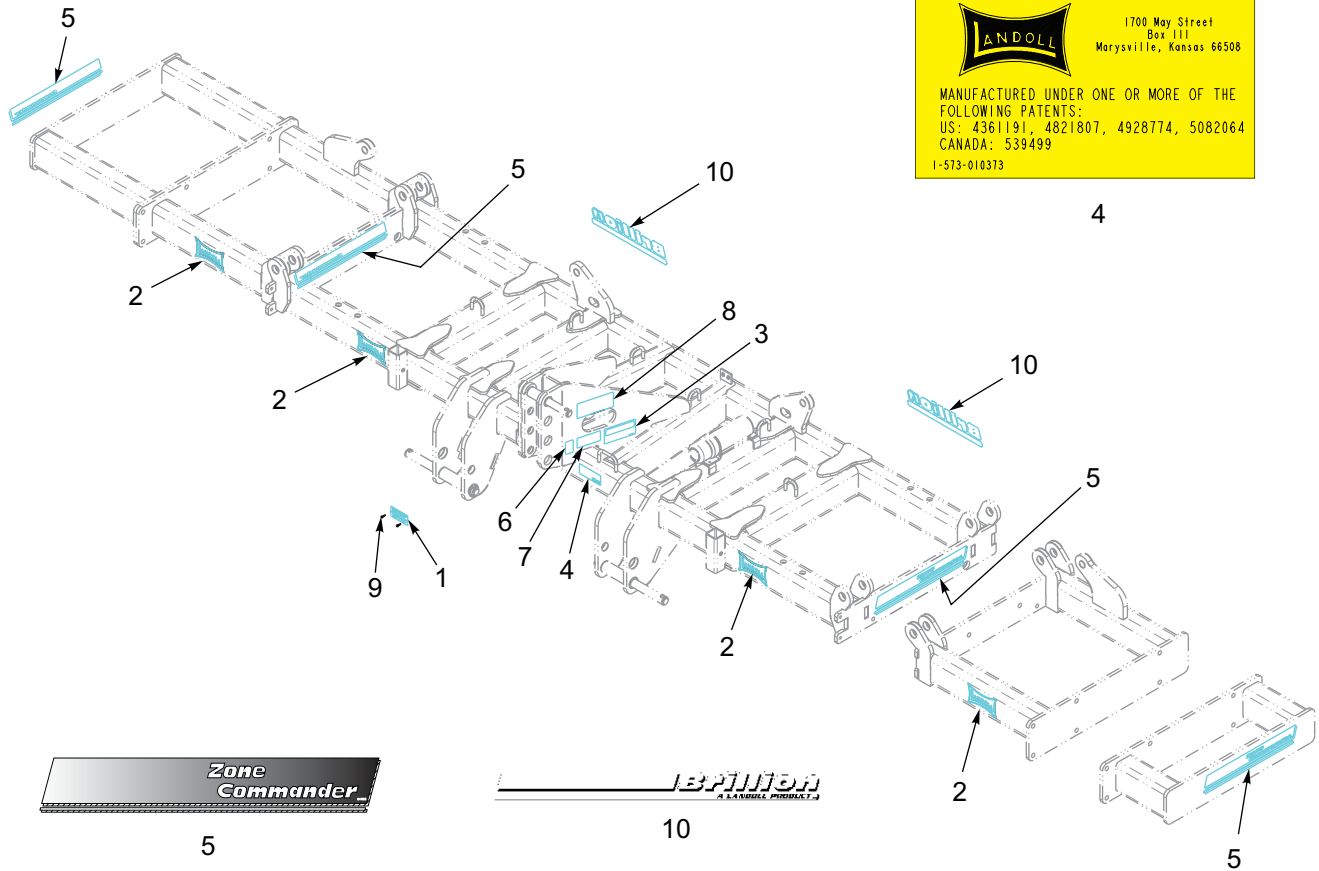
2



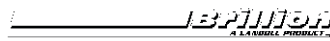
3



4



5



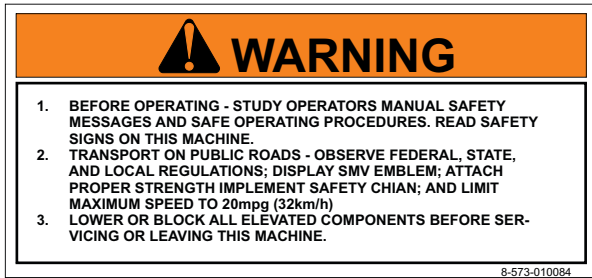
10



6

IMPORTANT!
DO NOT TURN WITH
MACHINE IN THE GROUND
8-573-010059

7



8

Figure 1-22: Decal Installation

Decal Installation

| ITEM | PART NUMBER | DESCRIPTION | QTY. |
|------|--------------|---------------------------------|-------------|
| 1 | 1-573-010006 | PLACARD, NAME | 1 |
| 2 | 1-573-010017 | DECAL, LANDOLL, (WHITE) | ***6,**4,*2 |
| 3 | 1-573-010096 | DECAL, DANGER NO RIDERS | 1 |
| 4 | 1-573-010373 | DECAL, PATENT, TILLAGE | 1 |
| 5 | 6K800 | DECAL - ZONE COMMANDER | 4 |
| 6 | 2-573-010198 | DECAL, MEMBER FEMA | 1 |
| 7 | 8-573-010059 | DECAL, IMPORTANT, NO TURNING | 1 |
| 8 | 8-573-010084 | DECAL, WARNING BEFORE OPERATING | 1 |
| 9 | 156010 | RIVET, BLIND .156 X 1/2 GRIP | 2 |
| 10 | 170510 | DECAL BRILLION LANDOLL | 2 |

NOTE: FOR P/N 1-573-010017 - THE 1ST QTY*** IS USED ON THE FOLDING FRAME 7, 8, & 9 SHANK
THE 2ND QTY** IS USED ON THE NARROW FRAME 3, 4, & 5 SHANK
THE 3RD QTY* IS USED ON THE STANDARD FRAME 4, 5, 6, & 7 SHANK

TABLE OF CONTENTS

Numerical Index

Numerics

| | | | |
|----------------|-----------------------------|-----------------|---|
| 0600-250-01000 | 1-21, 1-23 | 141828 | 1-21, 1-23, 1-25 |
| 0600-250-03000 | 1-21, 1-23 | 141868 | 1-21, 1-23 |
| 100827 | 1-5, 1-29, 1-31, 1-33, 1-35 | 141877 | 1-25 |
| 100966 | 1-7 | 142668 | 1-21, 1-23 |
| 101404 | 1-29, 1-31, 1-33, 1-35 | 142669 | 1-21, 1-23 |
| 102498 | 1-17 | 142671 | 1-21, 1-23 |
| 102604 | 1-17 | 142753 | 1-2, 1-3, 1-5 |
| 103841 | 1-7, 1-21, 1-23 | 143871 | 1-21, 1-23 |
| 1-076-010007 | 1-7, 1-17 | 144457 | 1-8 |
| 1-076-010009 | 1-7 | 147072 | 1-11, 1-13 |
| 1-076-010010 | 1-7, 1-17 | 147337 | 1-26 |
| 1-076-010012 | 1-7 | 147372 | 1-26 |
| 108820 | 1-7 | 149192 | 1-19 |
| 108821 | 1-7 | 150244 | 1-9, 1-11, 1-13, 1-15 |
| 108841 | 1-2 | 1-510-010003-09 | 1-13, 1-15 |
| 109985 | 1-7 | 1-512-010004-05 | 1-5, 1-29, 1-31, 1-33, 1-35 |
| 110-0344 | 1-17 | 1-512-010005 | 1-17 |
| 1-104-010002 | 1-7 | 1-512-010005-01 | 1-2, 1-3, 1-5, 1-29, 1-31, 1-33, 1-35, 1-37 |
| 111786 | 1-26 | 1-512-010005-03 | 1-21, 1-23, 1-37 |
| 111787 | 1-26 | 1-512-010005-05 | 1-21, 1-23, 1-37 |
| 1-161-010003 | 1-7 | 1-512-010005-09 | 1-7, 1-13, 1-15, 1-17, 1-19, 1-25 |
| 116489 | 1-25 | 1-512-010005-13 | 1-7, 1-11, 1-13, 1-15, 1-19 |
| 1-242-010180-3 | 1-25, 1-26 | 1-512-010005-15 | 1-2, 1-3, 1-5, 1-11, 1-13, 1-15, 1-21, 1-23, 1-29, 1-33 |
| 126895 | 1-7 | 1-512-010005-17 | 1-5 |
| 127351 | 1-11, 1-13 | 1-512-010005-19 | 1-8 |
| 1-298-010001-1 | 1-7, 1-17 | 1-512-010007-12 | 1-17 |
| 1-406-010010 | 1-7 | 154172 | 1-11, 1-13, 1-15 |
| 1-406-010012 | 1-7 | 155529 | 1-25 |
| 141251 | 1-8 | 1-557-010013 | 1-2, 1-3, 1-5, 1-19 |
| 141259 | 1-5 | 1-557-010362-40 | 1-7 |
| 141826 | 1-25 | 1-557-01220014 | 1-7 |
| | | 156010 | 1-39 |

TABLE OF CONTENTS

| | | | |
|-----------------|---------------------------------------|--------|------------------------------|
| 1-573-010006 | 1-39 | 169493 | 1-15 |
| 1-573-010017 | 1-39 | 170510 | 1-39 |
| 1-573-010096 | 1-39 | 171811 | 1-8 |
| 1-573-010373 | 1-39 | 172830 | 1-11, 1-13, 1-15 |
| 157648 | 1-29, 1-31, 1-33, 1-35 | 174435 | 1-29, 1-31, 1-33, 1-35, 1-37 |
| 160151 | 1-7 | 174436 | 1-29, 1-31, 1-33, 1-35, 1-37 |
| 164138 | 1-29, 1-31, 1-33, 1-35 | 174437 | 1-29, 1-31, 1-33, 1-35, 1-37 |
| 164142 | 1-5, 1-29, 1-31, 1-33, 1-35 | 174732 | 1-8, 1-9 |
| 1-647-010004255 | 1-15 | 174749 | 1-9 |
| 1-647-010004257 | 1-5 | 175151 | 1-29, 1-31, 1-33, 1-35, 1-37 |
| 1-654-010032-09 | 1-11, 1-13 | 176846 | 1-19 |
| 1-654-010047-04 | 1-29, 1-31, 1-33, 1-35 | 177260 | 1-15 |
| 1-654-010047-05 | 1-37 | 177261 | 1-15 |
| 1-654-010047-06 | 1-2, 1-3, 1-5, 1-29, 1-31, 1-33, 1-35 | 178514 | 1-29, 1-31, 1-33, 1-35, 1-37 |
| 1-654-010047-07 | 1-29, 1-31, 1-33, 1-35, 1-37 | 179071 | 1-3 |
| 1-654-010047-08 | 1-29, 1-31, 1-33, 1-35 | 179082 | 1-19 |
| 1-654-010049-01 | 1-17 | 179545 | 1-19 |
| 1-654-010049-05 | 1-21, 1-23 | 179546 | 1-19 |
| 1-654-010049-08 | 1-37 | 179547 | 1-19 |
| 1-654-010051-06 | 1-37 | 179548 | 1-2 |
| 1-654-010051-11 | 1-21, 1-23 | 179551 | 1-9 |
| 1-654-010055-0 | 1-17 | 179563 | 1-9 |
| 1-654-010055-07 | 1-13, 1-15 | 179966 | 1-19 |
| 1-654-010055-11 | 1-7, 1-25 | 179968 | 1-5 |
| 1-654-010055-13 | 1-19 | 179969 | 1-5 |
| 1-654-010059-03 | 1-7 | 179970 | 1-5 |
| 1-654-010061-04 | 1-29, 1-33 | 179975 | 1-2 |
| 1-654-010061-05 | 1-21, 1-23 | 181140 | 1-5 |
| 1-654-010061-06 | 1-2, 1-5 | 181143 | 1-37 |
| 1-654-010061-07 | 1-3, 1-7 | 181144 | 1-37 |
| 1-654-010061-13 | 1-11, 1-13, 1-15 | 181147 | 1-5 |
| 1-654-010061-15 | 1-17 | 181148 | 1-5 |
| 1-654-010070-03 | 1-13, 1-15 | 181151 | 1-5 |
| 1-659-010004 | 1-7 | 181154 | 1-37 |
| 169484 | 1-8 | 182220 | 1-17 |
| 169486 | 1-8 | 182222 | 1-17 |
| 169492 | 1-8 | 182224 | 1-17 |

TABLE OF CONTENTS

| | | | |
|-----------------|---------------------------------------|--------------|-----------------------------|
| 182225 | 1-17 | 2-573-010198 | 1-39 |
| 1822271 | 1-23 | 2-798-010069 | 1-7 |
| 182228 | 1-15 | 2-870-010108 | 1-7 |
| 182231 | 1-37 | 2P782 | 1-13 |
| 182233 | 1-17 | 2P783 | 1-13 |
| 182241 | 1-19 | 3/4-16HSN | 1-17 |
| 182242 | 1-19 | 3-375-010371 | 1-21, 1-23 |
| 182261 | 1-21 | 3J397 | 1-17 |
| 182270 | 1-21, 1-23 | 3K361 | 1-17 |
| 182290 | 1-29, 1-33 | 3K613 | 1-17 |
| 182310 | 1-29, 1-31, 1-33, 1-35 | 4K076W | 1-17 |
| 184413 | 1-8 | 4K551 | 1-13, 1-15 |
| 185203 | 1-31, 1-35 | 5D954 | 1-19 |
| 185204 | 1-31, 1-35 | 5J425 | 1-13, 1-15 |
| 185250 | 1-15 | 6D337 | 1-17 |
| 185257 | 1-5 | 6K478 | 1-13, 1-15 |
| 1-861-010004 | 1-7 | 6K796 | 1-11, 1-13 |
| 1-861-010032-07 | 1-2, 1-3, 1-5, 1-29, 1-31, 1-33, 1-35 | 6K800 | 1-39 |
| 1-861-010032-09 | 1-17 | 70260977 | 1-5, 1-29, 1-31, 1-33, 1-35 |
| 1-861-010032-20 | 1-21, 1-23 | 71508992 | 1-25 |
| 1-861-010032-22 | 1-5 | 7J569 | 1-17 |
| 1-861-010032-32 | 1-5 | 7K548 | 1-11 |
| 187878 | 1-2, 1-3, 1-5 | 8-557-010095 | 1-2, 1-3, 1-5, 1-19 |
| 187879 | 1-3, 1-5 | 8-557-010149 | 1-7 |
| 191067 | 1-8 | 8-573-010059 | 1-39 |
| 191121 | 1-15 | 8-573-010084 | 1-39 |
| 191655 | 1-3, 1-5 | 8K756 | 1-19 |
| 191656 | 1-3, 1-5 | 9K289 | 1-19 |
| 1P042 | 1-21, 1-23 | 9K295PM | 1-17 |
| 1P846 | 1-11 | 9K453 | 1-17 |
| 202702-8-8S | 1-25 | 9K454 | 1-17 |
| 2-102-010032 | 1-5, 1-29, 1-31, 1-33, 1-35 | 9K874 | 1-13 |
| 2-150-010008 | 1-25 | | |
| 2-368-010287 | 1-29, 1-31, 1-33, 1-35, 1-37 | | |
| 2-423-010034 | 1-2, 1-3, 1-5 | | |
| 2-474-010022 | 1-25 | | |
| 2-557-010009 | 1-2 | | |
| 2-557-010417 | 1-3, 1-5 | | |

C

| | |
|----------------|------------|
| CO-975-74-2000 | 1-21, 1-23 |
|----------------|------------|

TABLE OF CONTENTS

T

TR416 1-7

Document Control Revision Log:

| Date | Revision | Improvement(s) Description and Comments | Team Member |
|---------|----------|---|-------------|
| 04/2015 | R0 | Initial Release | WML |
| | | | |
| | | | |



Intertek

Equipment from Landoll Company, LLC is built to exacting standards ensured by ISO 9001 registration at all Landoll manufacturing facilities.

Zone Commander Model 2511 Parts Manual

Re-Order Part Number F-757R0

LANDOLL COMPANY, LLC

1900 North Street

Marysville, Kansas 66508

(785) 562-5381

800-428-5655 ~ WWW.LANDOLL.COM



Copyright 2014. Landoll Company, LLC

"All rights reserved, including the right to reproduce this material or portions thereof in any form."