

REPAIR PARTS CATALOG



144" Flail Shredder

MODELS: FS1445 FS1446
FSC1445 FSC1446

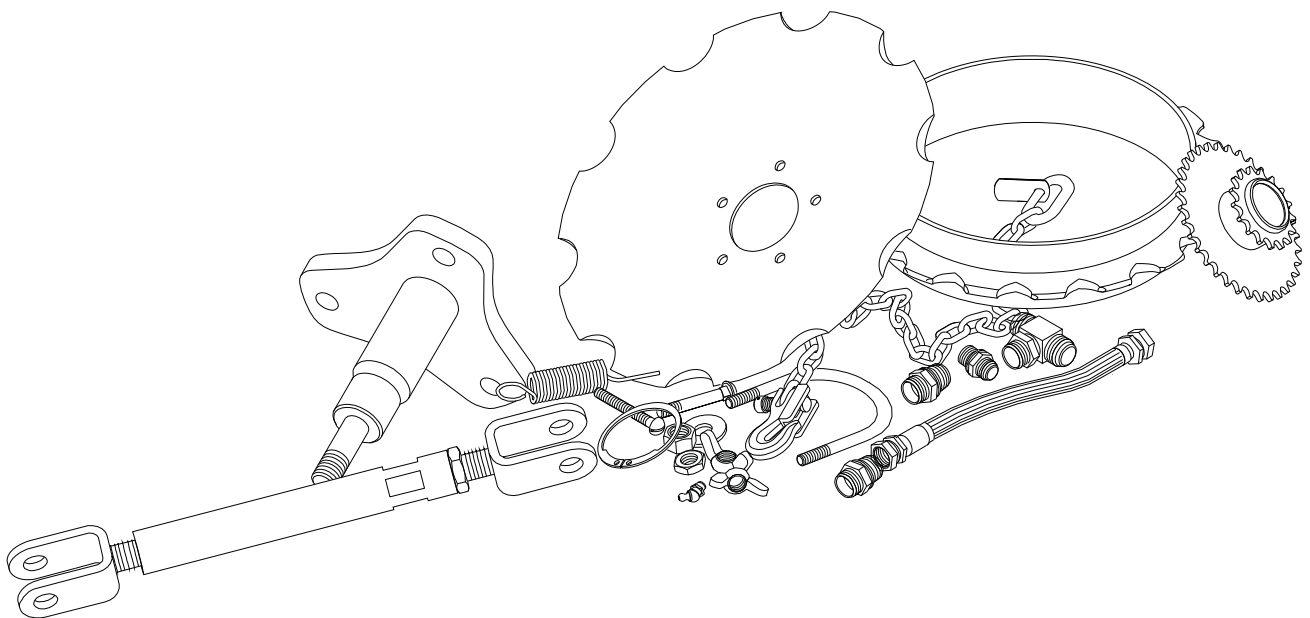
IMPORTANT!

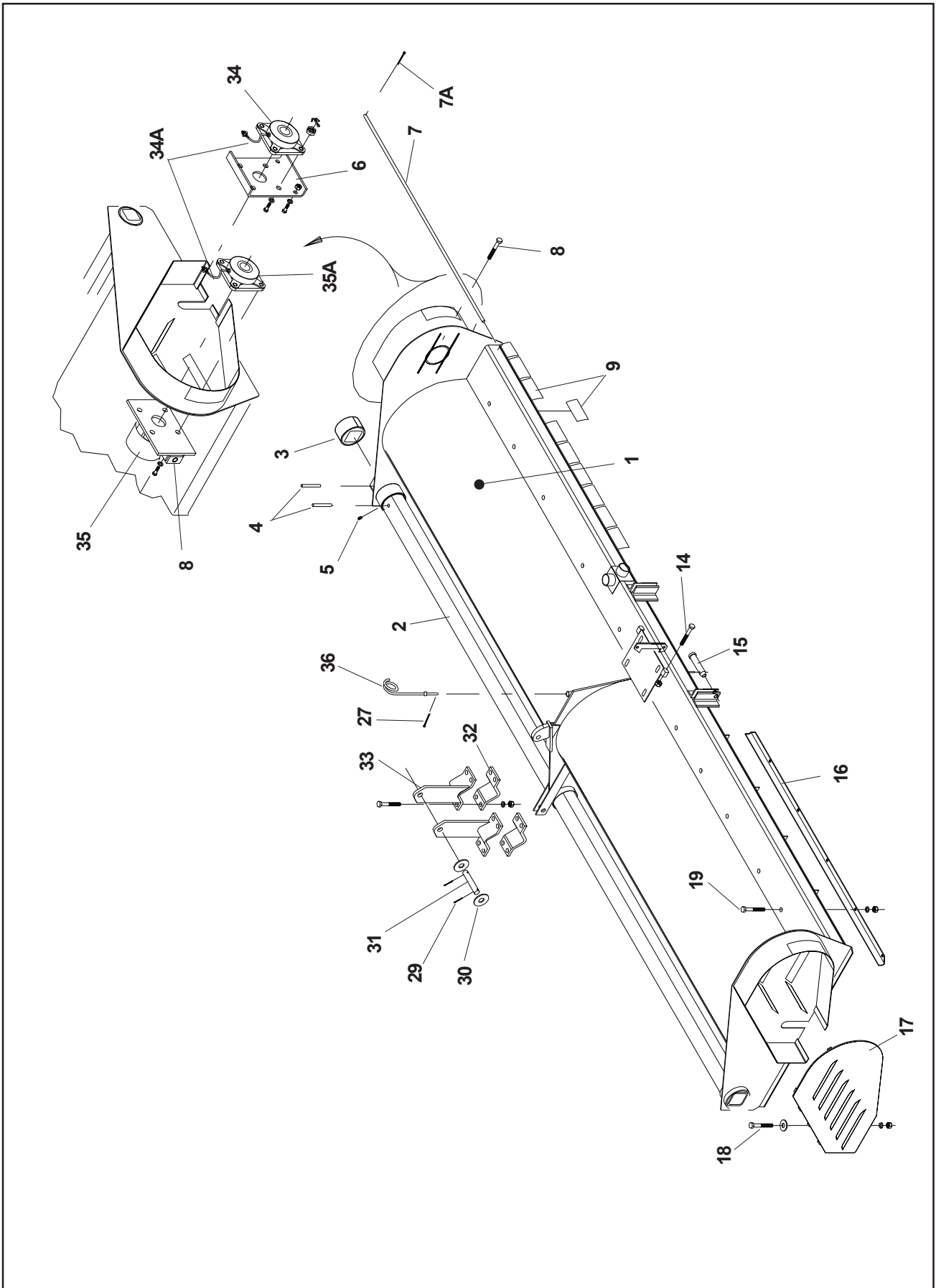
Repairs cannot be purchased
retail direct from factory.
Order through your Brillion dealer.

REPAIR PARTS

CONTENTS

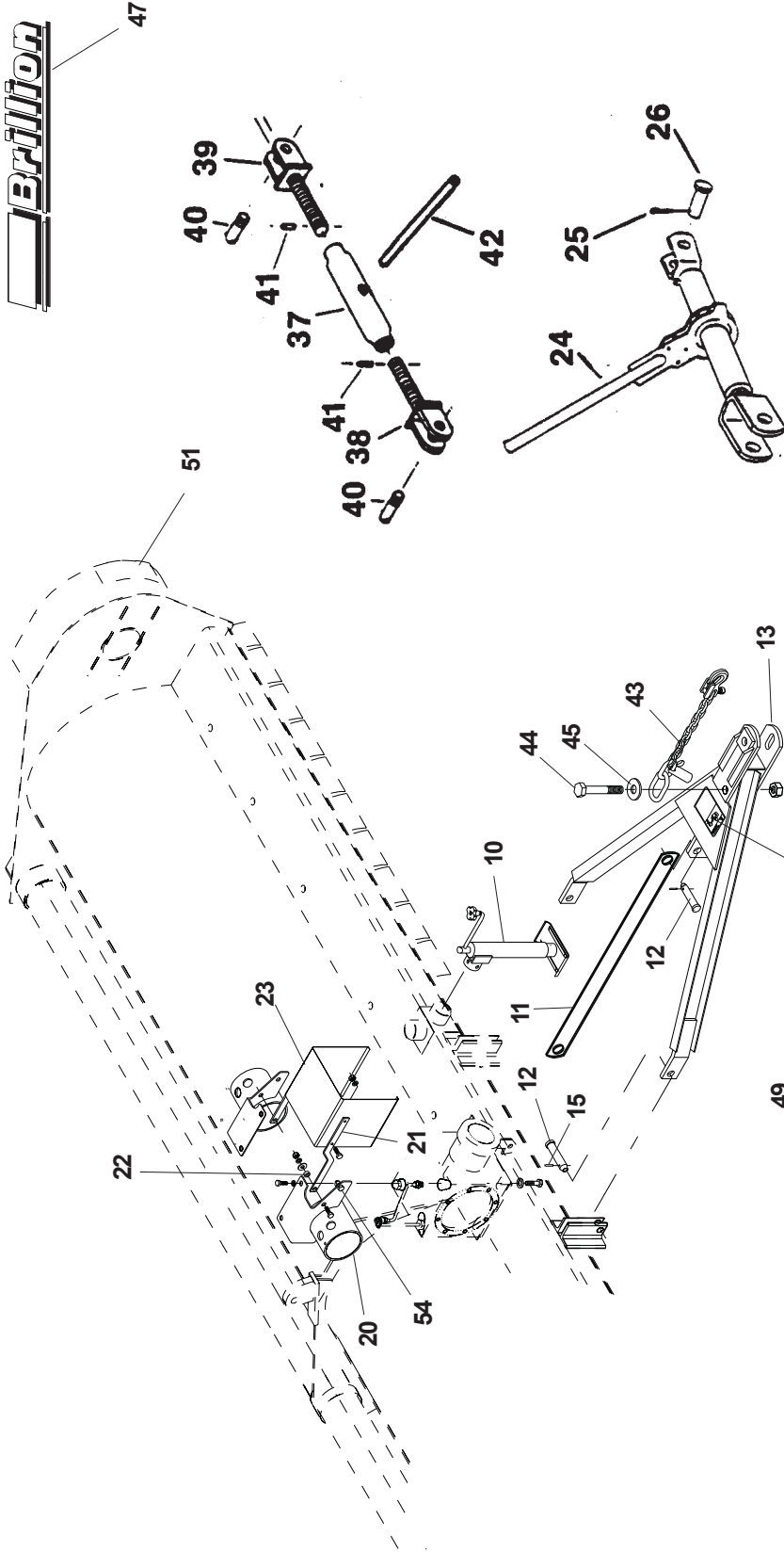
Hood & Hitch Assembly	2 - 3B
Flail Assembly	4, 5
Gearbox Assembly	6, 7
Gearbox (Prairie Gear Mfg. Co.) Assembly	7A, 7B
Wheel Arm Assembly	8, 9
Driveline Assemblies	10, 11





HOOD & HITCH ASSEMBLY				
Index #	Part #	Description	Q'ty	Weight
1	3K644	Main Frame Assembly	1	
2	8J192	Pivot Tube	1	112
3	8J187	Bearing	3	7.4
4	5D954	Roll Pin, 5/16 x 4	4	.1
5	9D923	Lube Fitting	3	-
6	4D564	End Plate Stiffener	2	4.5
	1C334	Capscrew, 1/2 x 1-1/4	4	.1
7	5D301	Skirt Hanger Rod	2	4.5
7A	2C864	Cotter Pin, 1/8 x 1	4	-
8	5D410	Bolt, 3/4 x 6-1/2 Special	2	.7
9	7D680	Skirt, 6-7/8	20	1
10-13		Items 10-13 found on Page 3A & 3B		
14	5D411	Bolt, 3/4 x 8 Special	2	1
	1C210	Nut, 3/4	4	.1
15	4C446	Cotter Pin, 1/4 x 1-1/2	4	-
16	4D528	Wear Plate	2	11
17	4D575	Belt Guard Cover Assembly - R.H.	1	10.2
	4D539	Belt Guard Cover Assembly - L.H.	1	10.2
18	1C237	Capscrew, 5/16 x 3/4	6	-
	1C362	Lockwasher, 5/16	6	-
	3C127	Flat Washer, 5/16	6	-
19	1C674	Capscrew, 1/2 x 1	18	.1
	1C109	Lockwasher, 1/2	29	-
	1C390	Nut, 1/2	22	-
20-26		Items 20-26 found on Page 3A & 3B		
27	1C986	Cotter Pin	1	-
28	--	----	--	--
29	4C446	Cotter Pin	1	--
30	7C076	Roll Pin	2	--
31	5J572	Pin, 1" x 5 1/2" Long	1	1.2
32	8J268	Clamp Plate	2	4.3
33	8J191	Cylinder Arm	2	10
	4D957	Capscrew, 3/4 x 2-1/4 (Gr. 5)	8	.4
	1C211	Lockwasher, 3/4	8	-
	1C210	Nut, 3/4	8	-
34	1K309	Flange Bearing, 1-3/4	2	5.4
34A	1K305	Grease Hose	2	-
	1K306	Malleable Lck Nut	4	-
	1K307	Pipe Bushing-spl.	4	-
35	8J-220	Belt Adjusting Plate Assembly	2	15
35A	1K308	Flange Bearing, 1 3/4	2	5.4
36	9J816	Hose Holder	1	2.4

Brilliant



CAUTION

- DO NOT UNDER ANY CIRCUMSTANCES, ALLOW ANYONE TO REMAIN IN VICINITY OF MACHINE WHEN STARTING OR OPERATING.
- OPERATOR MUST REMAIN ON TRACTOR WHILE POWER TAKE OFF IS IN MOTION.
- NEVER MAKE ADJUSTMENTS, LUBRICATE, OR CLEAN MACHINE WITH ANY PART OF MACHINE IN MOTION.
- DO NOT PERMIT TRACTOR RIDERS OTHER THAN OPERATOR. DO NOT ALLOW ANYONE TO RIDE THE MACHINE.
- DO NOT OPERATE SHREDDER IN EXCESS OF STANDARD TRACTOR PTO SPEED.
- BE CAREFUL. OBSERVE ALL STANDARD SAFETY PRECAUTIONS.
- BLOCK UP MACHINE BEFORE ATTEMPTING SERVICE UNDER MACHINE. DO NOT USE HYDRAULIC CYLINDER TO SUPPORT MACHINE WHEN WORKING UNDER IT.

50066
50065

WARNING

DO NOT GO NEAR LEAKS
HIGH PRESSURE OIL LEAKS CAN CAUSE SKIN AND EYE INJURY. IF INJURED, SEEK EMERGENCY MEDICAL HELP IMMEDIATELY. DO NOT USE FINGERS OR SKIN TO REMOVE OIL. LOWER LOAD OR RELIEVE HYDRAULIC PRESSURE BEFORE LOOSENING FITTINGS.

1083A

LUBRICATION INSTRUCTIONS

- GREASE P.T.O., JOINTS AND TELESCOPING SHAFT AND TUBE ASSEMBLY
- GREASE UNIVERSAL JOINT ON CROSS SHAFTS DAILY.
- GREASE THE SIX FLANGE BEARINGS AND THE THREE REAR PIVOT TUBE BEARINGS EVERY 40-50 HOURS. (THERE IS ONE FLANGE BEARING ON THE OUTER END OF EACH CROSS SHAFT AND ONE ON EACH END OF THE TWO ROTORS. THE BEARING ON THE INNER END OF EACH ROTOR IS MOUNTED ON THE CENTER PLATE OF THE MACHINE.)
- REPACK WHEEL BEARING ONCE A YEAR!
- CHECK OIL LEVEL IN GEARBOX BEFORE USING. MAINTAIN LEVEL WITH GRADE OF LUBRICANT. CHANGE OIL AT THE BEGINNING OF EACH SEASON.

8.17.79

WARNING

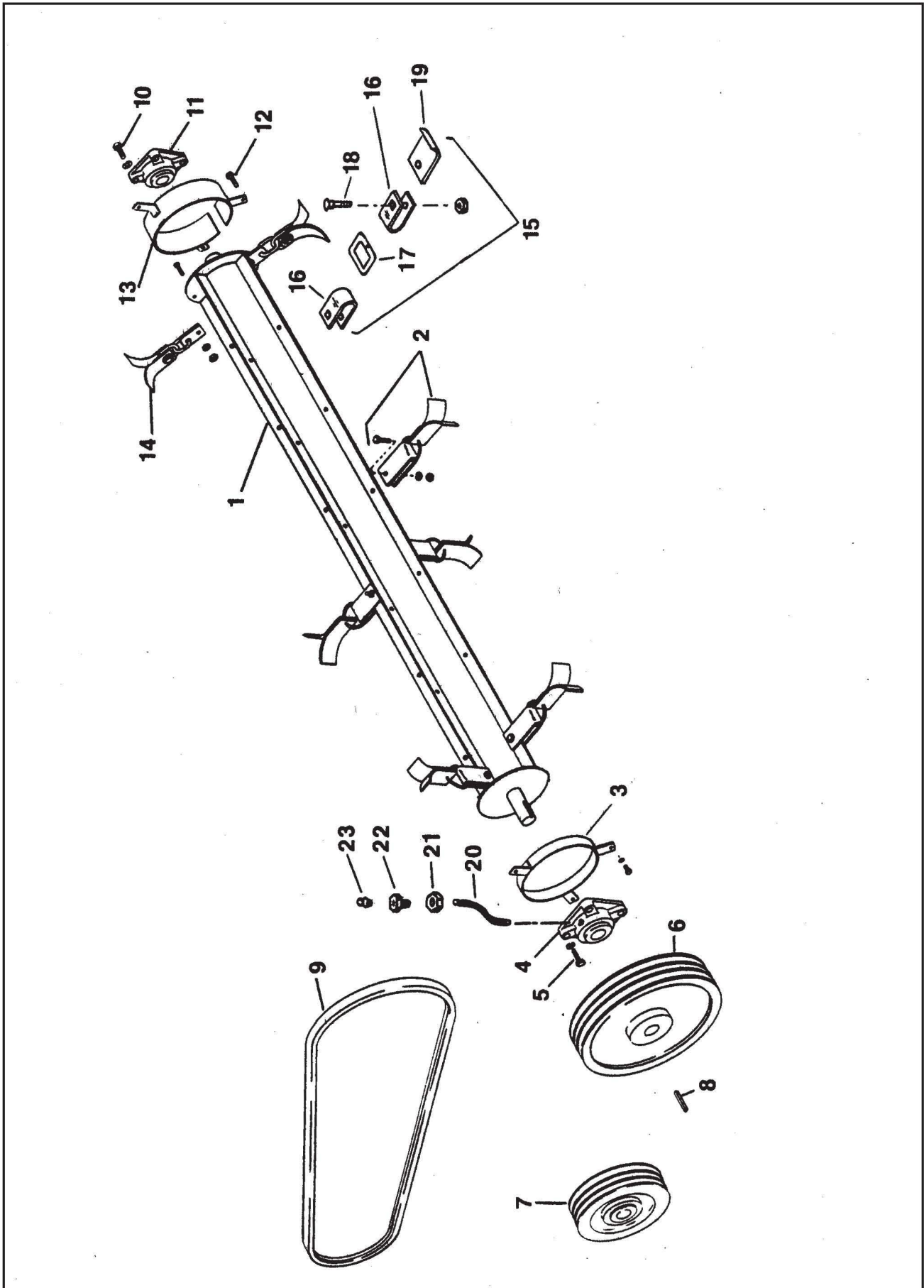
THROWN OBJECT HAZARD
TO PREVENT SERIOUS INJURY OR DEATH, ALWAYS WEAR YOUR SAFETY BELT AND ALWAYS WEAR YOUR SEATBELT. KEEP OTHERS OUT OF VICINITY WHILE OPERATING.

40031

CAUTION
THIS TRACTOR IS NOT TO BE OPERATED WITHOUT PROPER TRAINING.

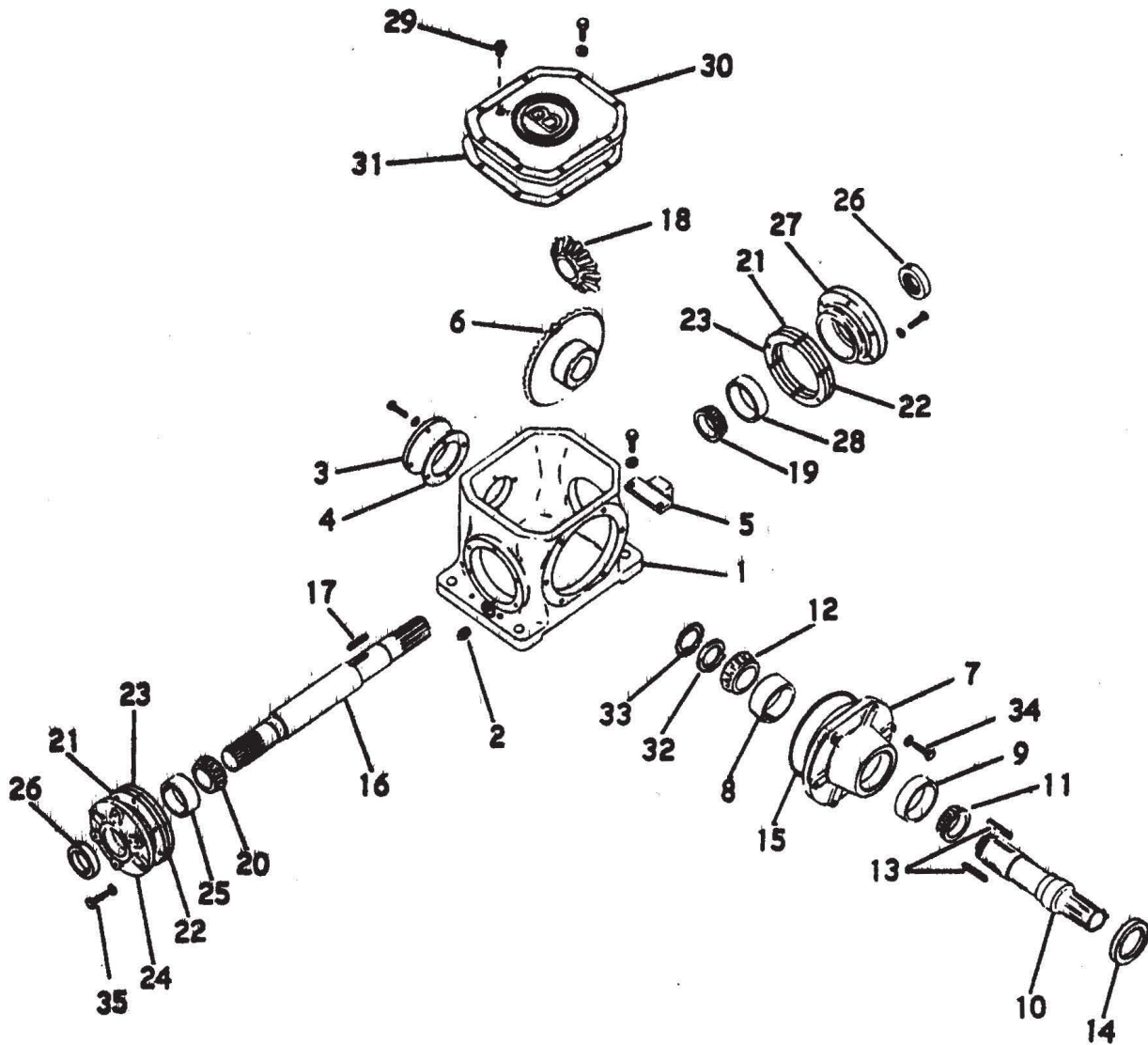
HOOD & HITCH ASSEMBLY (CONT'D)

Index #	Part #	Description	Q'ty	Weight
10	3J880	Jack	1	19
	6K458	Replacement Pin, 9/16" with chain & screw	1	.36
11	4D557	Drawbar Link	2	3.7
12	4D983	Clevis Pin, 1 x 2	4	.5
13	4D543	Front Hitch Assembly	1	65
-				
20	3K080	Bracket Assembly - R.H.	1	11
	3K079	Bracket Assembly - L.H.	1	11
21	7D019	Arm	2	.9
22	1D991	Bushing	2	-
	1C232	Capscrew, 3/8 x 1-1/4	2	-
23	7D020	Shield	1	2.8
24	7J237	Ratchet Jack	1	15.0
25	8D099	Clevis Pin	2	.95
26	6C468	Cotter Pin	2	.02
-				
37	8D597	Turnbuckle Body	1	2.5
38	8J205	Yoke Assembly - R.H. Thrd.	1	3.2
39	8J204	Yoke Assembly - L.H. Thrd.	1	3.2
40	6C703	Pin Assembly	2	.7
41	7C870	Roll Pin, 3/16 x 1-1/8	2	-
42	8D590	Rod	1	1
	7C940	Roll Pin, 3/16 x 7/8	2	-
	1K823	Safety Chain Kit	1	
43	1K731	Safety Chain	1	
44	6D528	Machine Bolt, 1/8 x 6, Grade 5	1	
45	1C787	Flat Washer, 1"	1	
46	6D306	Stover Nut, 1-8 NC Hex	1	
47	4K039	Decal, Large "Brillion" 3 3/4x 40"	2	-
	4K036	Decal, Small "Brillion" 2 3/4 x 20"	2	-
48	3K706	Decal, Warning, Hydraulic Leaks	2	-
49	5D006	Decal, "Caution"	1	-
50	8J273	Decal, "Lubrication Instruction"	1	-
51	2J430	Decal, Reflective Red	2	-
	2J431	Decal, Reflective Amber	2	-
52	4K031	Decal, "Warning"	1	-
53	5D019	Decal, "Notice" (540 R.P.M.) [shown]	1	-
	5D020	Decal, "Notice" (1000 R.P.M.)	1	-
54	4C803	Capscrew, 3/8"-16 NC x 1"	2	-
	1C182	Flat Washer, 3/8"	8	-
	1C183	Lockwasher, 3/8"	2	-
	1C277	Nut, 3/8-16 NC	2	-



FLAIL ASSEMBLY				
Index No.	Part #	Description	No. Used	Weight
1	9D920	*Flail Assembly - Side Slice Knives	2	220
	8J759	*Flail Assembly, L.H. - Cup Knives	1	215
	8j760	*Flail Assembly, R.H. - Cup Knives	1	215
	1K171	*Flail Assembly, L.H. - Side Slice & Cup Knives	1	217
	1K172	*Flail Assembly, R.H. - Side Slice & Cup Knives	1	217
2	4D602	Knife Assembly	48	3.2
	5D183	"D" Ring & Knife Assembly	48	1.7
	5D053	Knife - Side Slice	96	.5
	5D052	"D" Ring	48	.7
	5D054	"U" Bracket	48	1.2
	5D333	Retainer	48	.2
	5D051	Capscrew, 1/2 x 1-3/4 (Gr. 5)		.2
	5D304	Lock Nut, 1/2		.1
3	4D579	Flail Bearing Shield-End	2	2.5
	4C437	Capscrew-Drilled, 1/2 x 1-1/2	3	.1
4	9D921	Flange Bearing, 1-3/4	2	5.4
5	4D538	Capscrew-Drilled, 5/8 x 2 (Gr. 5)	8	.2
	4D529	Nut, 5/8 Slotted	8	-
	1B166	Lockwasher, 5/8	8	-
	2C298	Cotter Pin, 1/8 x 1-1/4	15	-
6	5D328	Pulley, 3C-14" P.D.	2	50
	6D927	"E" Hub, 1-3/4 w/Bolts	4	7
7	5D329	Pulley, 3C-8.5", P.D.	2	31
	6D927	"E" Hub, 1-3/4 w/Bolts	4	7
8	5D479	Key, 3/8 sq. x 2-5/16	2	-
	5D511	Roll Pin, 1/8 x 1/2	2	-
9	5D875	Belt C75, Matched Set of 3	2	1.5
10	8D350	Capscrew-Drilled, 1/2 x 2-1/4 (Gr. 8)	4	.2
	2C290	Nut, 1/2 Slotted	4	-
11	4D645	Flange Bearing, 1-1/2	2	4.7
12	1C674	Capscrew, 1/2 x 1	18	.1
	1C390	Nut, 1/2	22	-
	1C109	Lockwasher, 1/2	29	-
13	4D581	Flail Bearing Shield-Center	2	1.5
14	5D044	Center Cut Knife Assembly (optional)	4	2.7
	5D076	2 - Link Chain Assembly (less Knives)		
	5D216	Guard, 4-3/4 wide	2	2.2
15	8J-807	Cup Knife Assembly, incl. attaching hardware	48	3
16	8J756	U-bar	96	.6
17	8J755	Square Ring	48	.5
18	9J571	Carriage Bolt, Gr. 5, 1/2 x 1 3/4" Full Body	96	.2
	5D304	Lock Nut, 1/2"	96	.1
19	8J754	Cup Knife	48	.9
20	1K305	Grease Hose	4	.1
21	1K306	Malleable Lock Nut, 1/2 N.P.T.	4	-
22	1K307	Pipe Bushing - Special	4	-
23	9D923	Grease Fitting	4	-
* Assembled and balanced at factory				

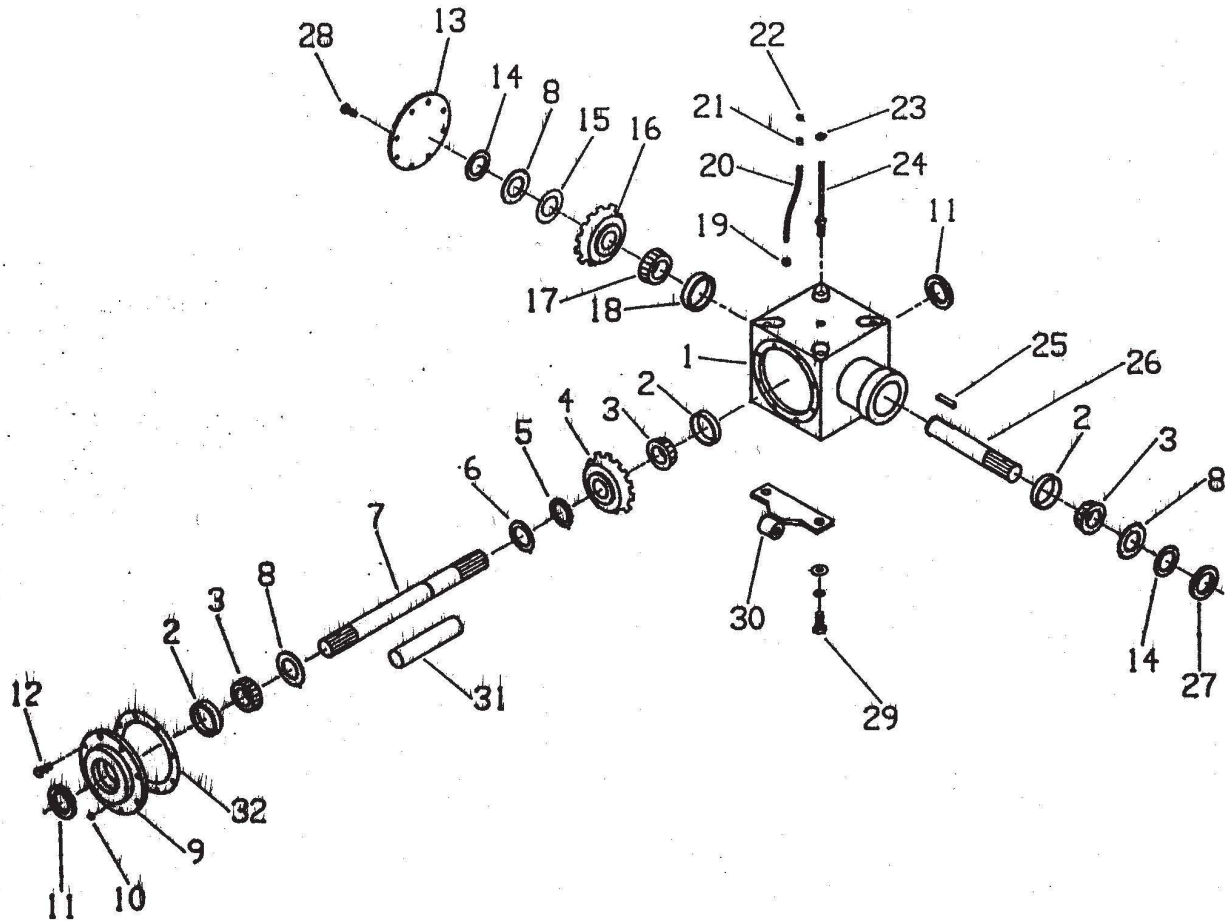
MODEL FS-1445, FS-1805
MODEL FSC-1445, FSC-1805



GEARBOX ASSEMBLY (FS-1445, FSC-1445)

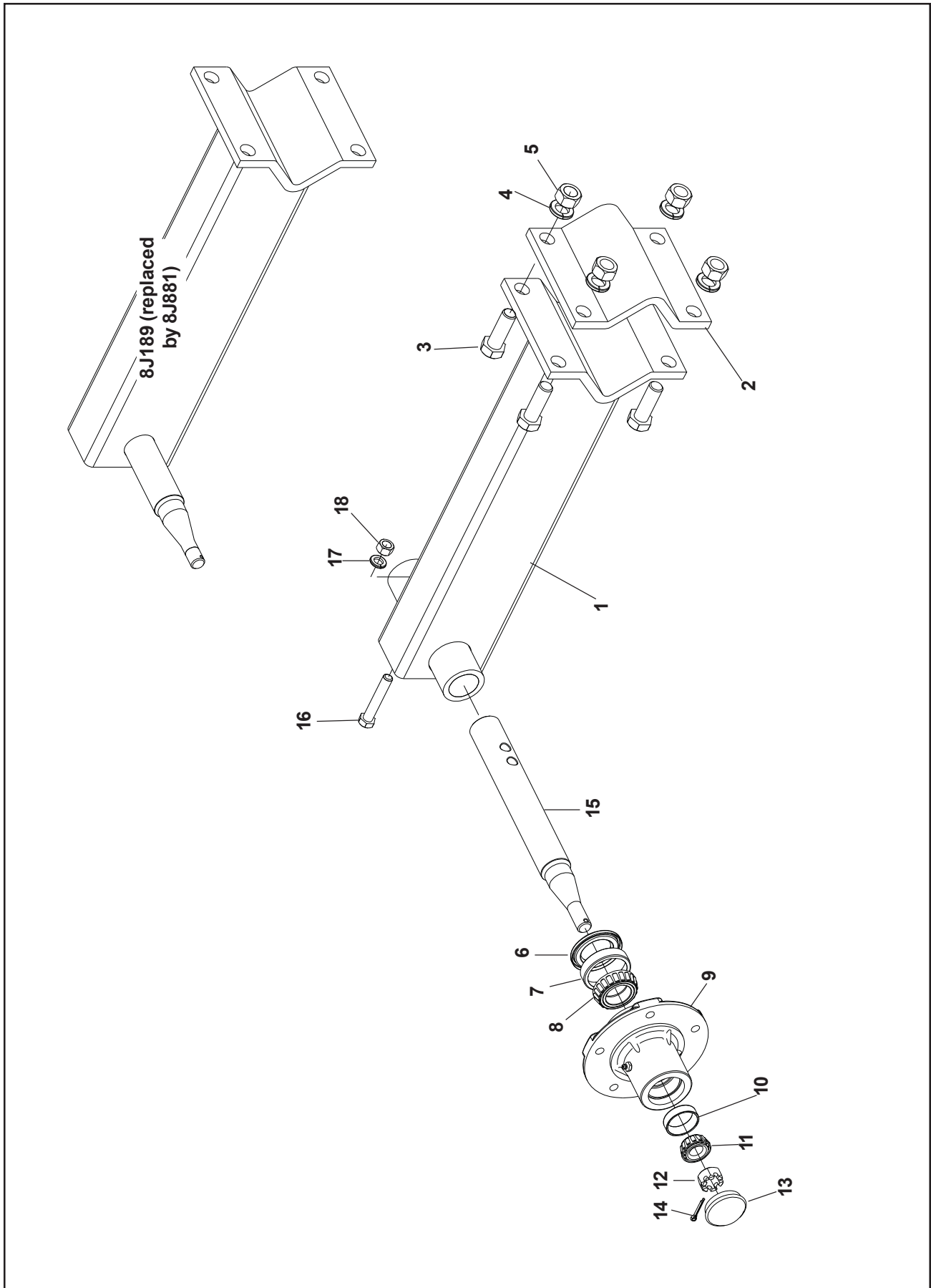
Index No.	Part #	Description	No. Used	Weight
1	4D-635	Gearbox Assembly (1000 R.P.M.)	1	59.3
	4D-636	Gearbox Assembly (540 R.P.M.)	4	.2
	4D-705	Drive Gear Housing	4	-
	9C-369	Capscrew, 3/4 x 3	4	-
	1C-211	Lockwasher, 3/4	4	-
2	1C-210	Nut, 3/4	2	.1
	7C-403	Pipe Plug	1	1.3
3	4D-714	Cover, Back	12	.1
	4C-803	Capscrew, 3/8 x 1	12	-
4	1C-183	Lockwasher, 3/8	1	.1
	4D-715	Gasket, Back Cover	2	1.8
5	5D-426	Adjusting Block	4	.1
	1C-334	Capscrew, 1/2 x 1-1/4	4	-
	1C-109	Lockwasher, 1/2	1	10.3
6	4D-701	Drive Gear, 28 Tooth (1000 R.P.M.)	1	23
	4D-703	Drive Gear, 30 Tooth (540 R.P.M.)	1	18
7	4D-708	Bearing Carrier	1	.8
8	4D-633	Bearing Cup, #39520	1	.4
9	4C-832	Bearing Cup, #362A	1	8.8
10	5D-481	Drive Shaft	1	.8
11	4D-630	Bearing Cone, #368-S	1	.3
12	4D-632	Bearing Cone, #39575	2	.1
13	4D-716	Key, 3/8 Sq. x 1 29/32 Long	1	.5
14	4C-831	Oil Seal, 3-1/2 O.D.	1	.1
15	4D-724	"O" Ring Seal	1	15.3
16	4D-707	Driven Shaft	2	.1
17	4D-717	Key, 3/8 Sq. x 1-13/16 Long	1	13
18	4D-702	Gear, 28 Tooth (1000 R.P.M.)	1	4.5
	4D-704	Gear, 16 Tooth (540 R.P.M.)	1	1.4
19	4D-628	Bearing Cone, #3779	1	.5
20	3D-531	Bearing Cone, #LM603049	1	-
21	4D-874	Shim (.005 Thick)	1	-
22	4D-875	Shim (.007 Thick)	1	-
23	5D-046	Shim (.010 Thick)	1	6.5
24	4D-709	Bearing Carrier, R.H.	1	.3
25	3D-532	Bearing Cup, #LM603011	2	.2
26	4C-830	Oil Seal, 2-3/4 O.D.	1	5.8
27	5D-130	Bearing Carrier, L.H.	1	.7
28	4D-629	Bearing Cup, #3720	1	.1
29	5C-573	Breather	1	-
	3D-978	Bushing, 1/8 x 1/2	1	7.5
30	4D-711	Cover, Top	1	.2
31	4D-712	Gasket, Top Cover	1	.3
32	4D-624	Bearing Locknut	1	.1
33	4D-625	Bearing Lockwasher	6	.1
34	8C-036	Capscrew, 3/8 x 1-3/4 (Gr. 5)	12	.1
35	4D-904	Capscrew, 3/8 x 1-1/2 (Gr. 5)		

MODELS: FS-1446 FS-1806 FSC-1446 FSC-1806



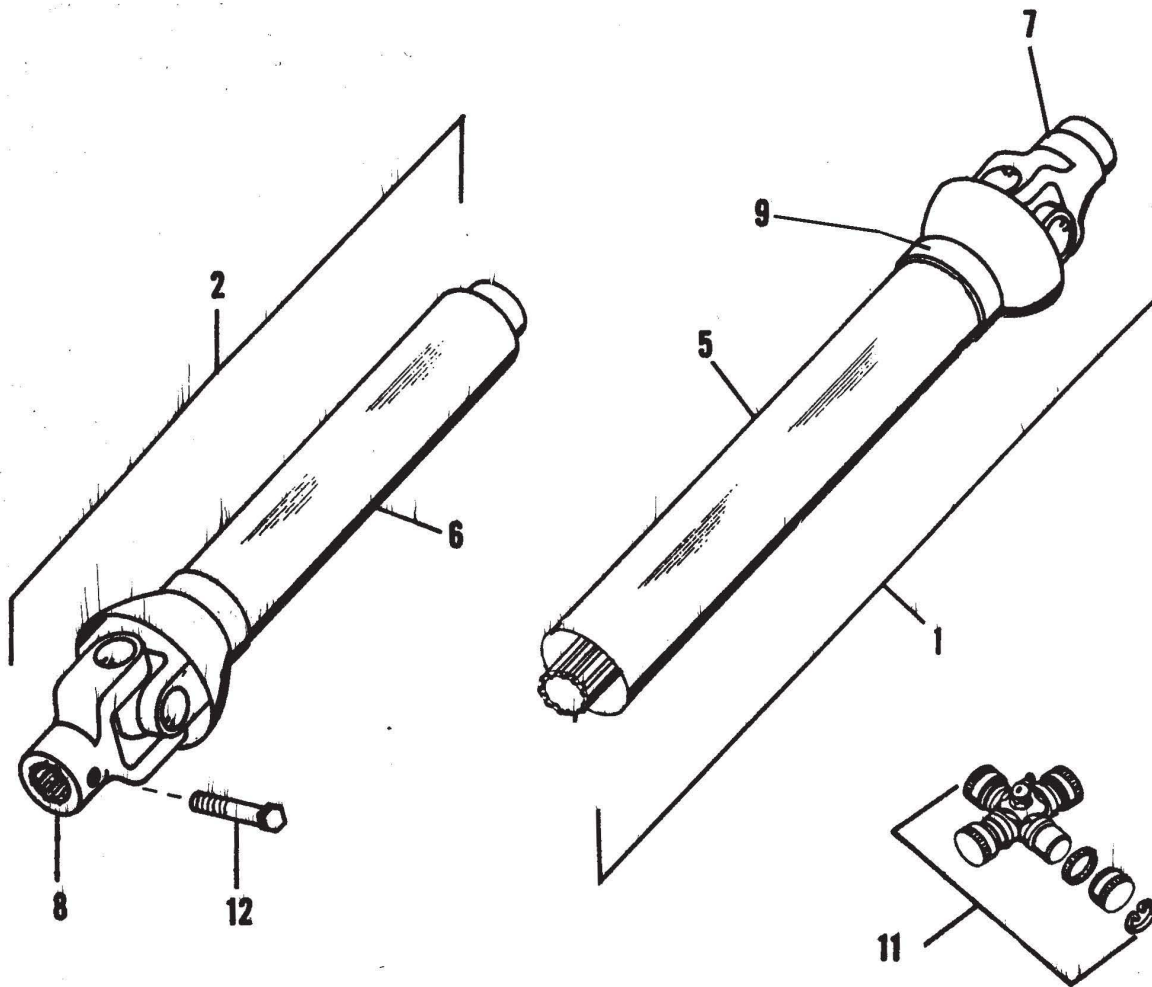
GEARBOX ASSEMBLY (Prairie Gear Mfg. Co.)

Index No.	Part #	Description	No. Used	Weight
	3K099	Gearbox Assembly (1000 R.P.M.)		
	3K098	Gearbox Assembly (540 R.P.M.)		
1	3K-343	Gearbox	1	
2	1D758	* Bearing Cup #25520	3	
3	1D759	* Bearing Cone #25580	3	
4	3K344	Gear - 22T (1000 R.P.M.)	2	
	3K345	Gear - 16T (540 R.P.M.)	1	
5	3K346	Spacer (540 R.P.M. only)	1	
6	3K381	Snap Ring (1000 R.P.M.)	3	
	3K382	Snap Ring (540 R.P.M.)	1	
7	3K364	Driven Shaft (1000 R.P.M.)	1	
	3K365	Driven Shaft (540 R.P.M.)	1	
8	3K366	Washer, 1-3/4 I.D. x 3/16 Thick	3	
9	3K367	Cover	1	
10	9C855	Pipe Plug, 1/4 N.P.T.	1	
11	3K383	Seal	2	
12	4C803	Capscrew, 3/8 x 1	8	
	1C183	Lockwasher, 3/8	8	
13	3K368	Cover	1	
14	3K381	Snap Ring	2	
15	3K369	Shim, 1-3/4 I.D. x .007		
16	3K344	Gear - 22T (1000 R.P.M.)	2	
	3K370	Gear - 29T (540 R.P.M.)	1	
17	3K384	* Bearing Cone #3782	1	
18	3K385	* Bearing Cup #3730	1	
19	3D978	Bushing 1/2 x 1/8	1	
20	1K305	Grease Hose	1	
21	3K089	Pipe Coupling	1	
22	3K371	Pressure Vent (Breather Plug)	1	
23	3K090	Hose Clamp	1	
24	3K083	Rod Weldment	1	
25	3K372	Key, 3/8 square x 1-7/16	1	
26	3K373	Drive Shaft	1	
27	3K386	Seal	1	
28	5C865	Capscrew, 3/8 x 3/4	8	
	1C183	Lockwasher	8	
29	5C460	Capscrew, 5/8 x 2"	4	
	1C122	Flat Washer, 5/8	4	
	1B166	Lockwasher	4	
30	3K648	Gearbox Adjusting Weldment	2	
31	3K374	Spacer Tube (1000 R.P.M. only)	1	
32	3K375	Shim		
*purchase these parts through local vendor				

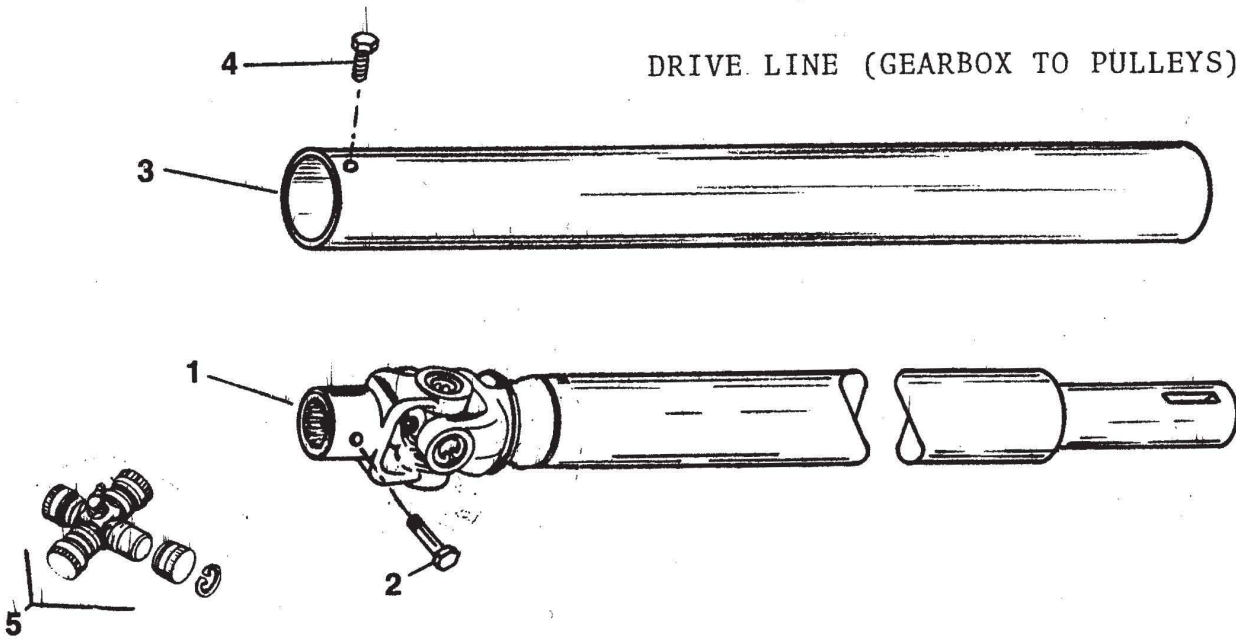


WHEEL ARM ASSEMBLY				
Index No.	No. Part #	Description	Used	Weight
1	8J881	Wheel Arm Assembly w/ Welded Spindle	2	
	8J189	replaced by 8J881		
2	8J-300	Clamp Plate	2	8.5
3	4D-957	Capscrew, 3/4 x 2-1/4 (Gr. 5)	8	.4
4	1C-211	Lockwasher, 3/4	8	--
5	1C-210	Nut, 3/4	8	.1
6	1D273	Seal	2	.1
7	5C-480	Bearing Cone, #LM48548	2	.2
8	5C-479	Bearing Cup, #LM48510	2	.1
9	1J-390	Wheel Hub	2	8.6
10	5C-912	Bearing Cup, #LM11910	2	.1
11	5C-911	Bearing Cone, #LM11949	2	.2
12	3C-173	Slotted Nut, 3/4 - 16	2	.1
13	1J-463	Hub Cap	2	.2
14	3C-350	Cotter Pin, 5/32 x 1	2	--
15	5J467	Spindle	2	6.9
16	8C528	Capscrew, 1/2-13 NC x 3" Gr. 5	2	
17	1C109	Lock Washer, 1/2"	2	
18	1C390	Nut, 1/2-13 NC Hex	2	
*	6J-189	Wheel, 5 Bolt (15 x 8 LB)	2	24
*	5C-100	Wheel Bolt	10	.1
*		Not Shown		

DRIVE LINE (TRACTOR TO GEARBOX)

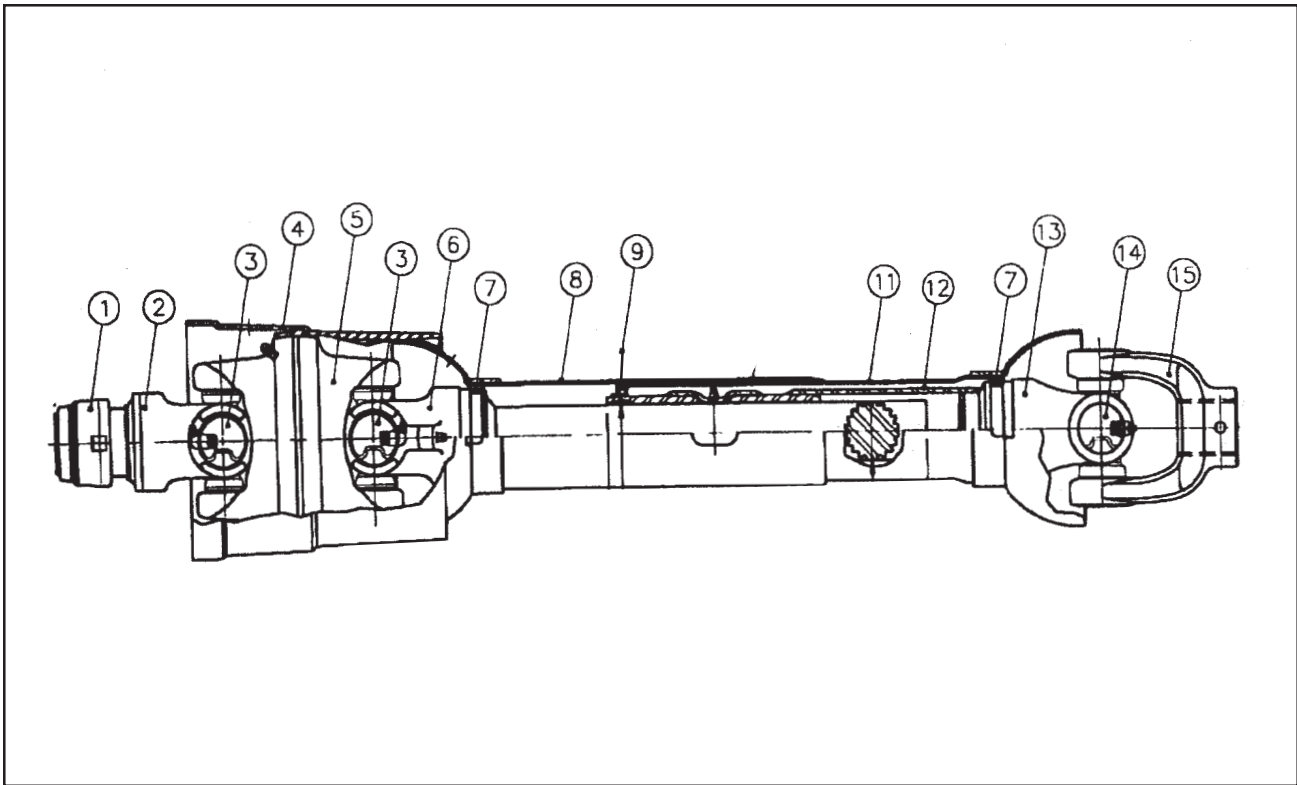


DRIVE LINE (GEARBOX TO PULLEYS)



DRIVE LINE (TRACTOR TO GEARBOX)				
Index No.	Part #	Description	No. Used	Weight
1	6K226	P.T.O. Assembly - 1000 R.P.M.w/ C/V & O/R Clutch (#1 and #2)	1	
	8J-259	P.T.O. Assembly - 1000 R.P.M. w/ O/R Clutch (#1 and #2)		
	8J-260	P.T.O. Assembly - 540 R.P.M. w/ O/R Clutch(#1 and #2)		
	8J-286	Shaft and Joint Assembly - 1000 R.P.M.		
	8J-287	Shaft and Joint Assembly - 540 R.P.M.		
2	8J-288	Tube and Joint Assembly	1	
3	—	—		
4	—	—		
5	8J-291	Outer Guard Assembly - Incl. Bearing	1	
6	8J-292	Inner Guard Assembly - Incl. Bearing	1	
7	8J-293	Slide Lock Yoke Assembly - 1000 R.P.M.	1	
8	8J-294	Slide Lock Yoke Assembly - 540 R.P.M.	1	
	8J-297	Slide Lock Repair Kit	-	
	4D-936	Yoke - Gearbox	1	
	8J-295	Nylon Bearing and Retainer	2	.1
	10	—	—	
11	1D-134	Joint Repair Kit	-	
12	1D-239	Capscrew, 5/16 x 3 (Gr. 5)	1	.1
	5C-724	Locknut, 5/16	1	--

DRIVE LINE (GEARBOX TO PULLEYS)				
1	7D-213	Drive Shaft Assembly	2	33
	5D-508	TX Woodruff Key	2	.1
2	1D-239	Capscrew, 5/16 x 3 (Gr. 5)	2	.1
	5C-724	Locknut, 5/16	2	--
3	8J-266	Shield Tube	2	16.8
4	8C-175	Capscrew, 5/16 x 1/2	2	--
5	5D-063	Joint Repair Kit		



PTO-Assembly 1000 RPM (optional)

Index #	Part #	Description	Q"ty	Weight
1	8J297	Safety Slide Lock Repair Kit	1	
2	6K900	Safety Slide Lock Yoke Assembly	1	
3	6K901	Cat. B Cross & Bearing Kit	2	
4	6K902	Bell Extension Kit (Not Sold Separately)	1	
5	6K903	Center Housing Assembly	1	
6	6K904	Yoke & Shaft	1	
7	8J295	Nylon Repair Kit	2	
8	3K696	Safety Sign	1	
9	6K905	Centralizer	1	
-	-	---	-	
11	6K907	Inner/Outer Guard Set	1	
12	7K009	Safety Sign	1	
13	6K908	Yoke, Tube & Slip Sleeve	1	
14	1D134	55R Cross & Bearing Kit	1	
15	4D936	Yoke	1	



Equipment from Landoll Corporation is built to exacting standards ensured by ISO 9001:2008 registration at all Landoll manufacturing facilities.

LANDOLL CORPORATION

1900 North Street

Marysville, Kansas 66508

(785) 562-5381

800-428-5655 ~ WWW.LANDOLL.COM



Copyright 2010. Landoll Corporation

"All rights reserved, including the right to reproduce this material or portions thereof in any form"
