

# REPAIR PARTS CATALOG



## **180" Flail Shredder**

**MODELS: FS1805 FS1806**  
**FSC1805 FSC1806**

**IMPORTANT!**

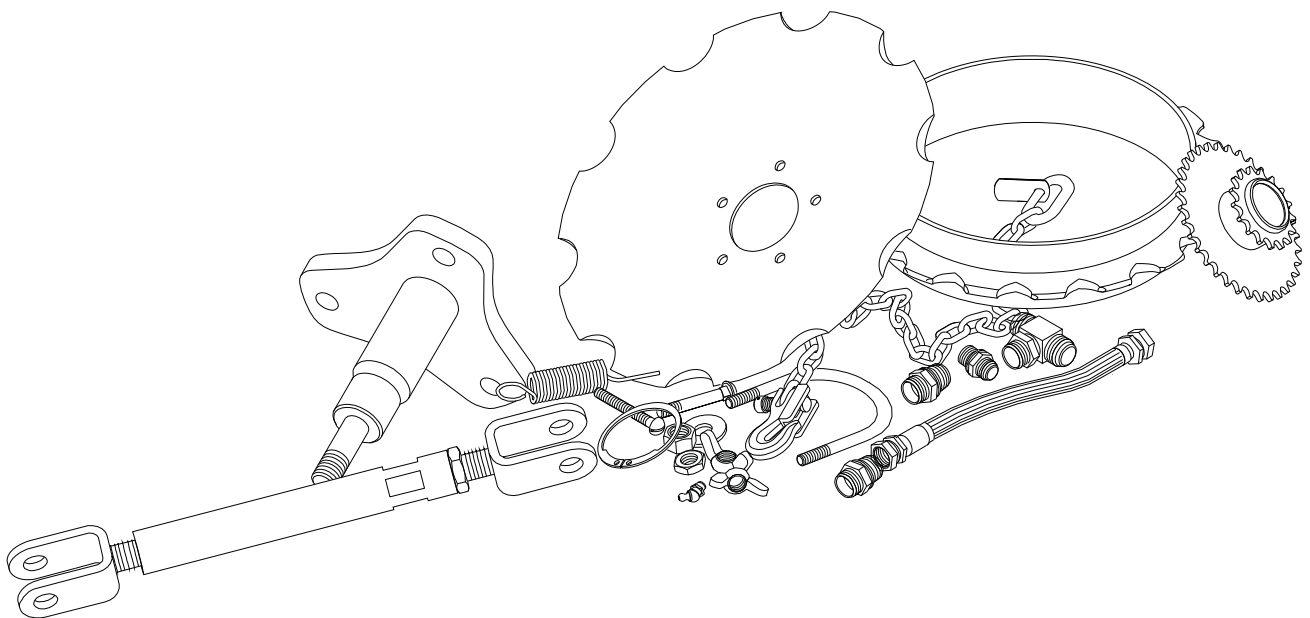
Repairs cannot be purchased  
retail direct from factory.  
Order through your Brillion dealer.

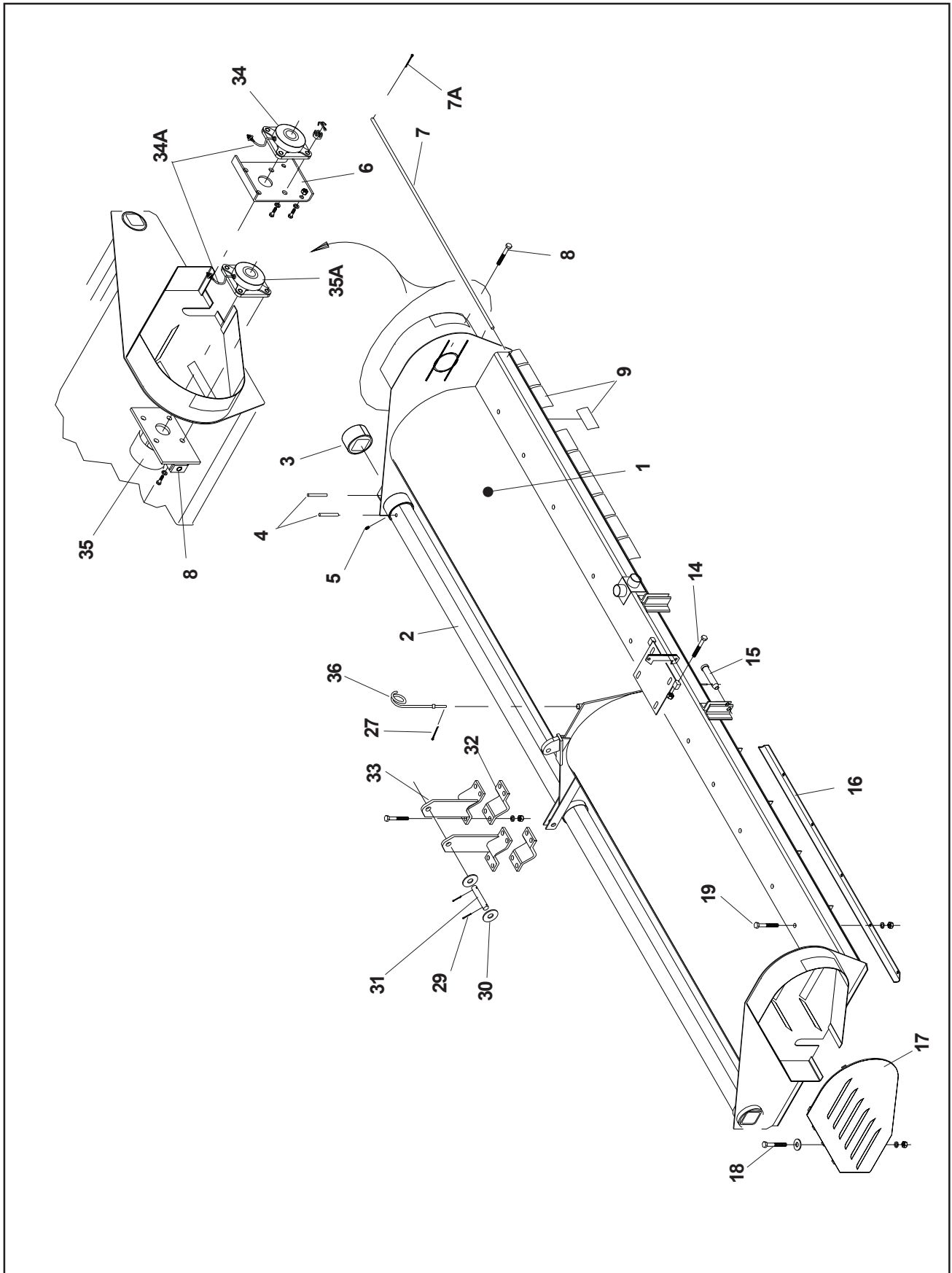


# REPAIR PARTS

## CONTENTS

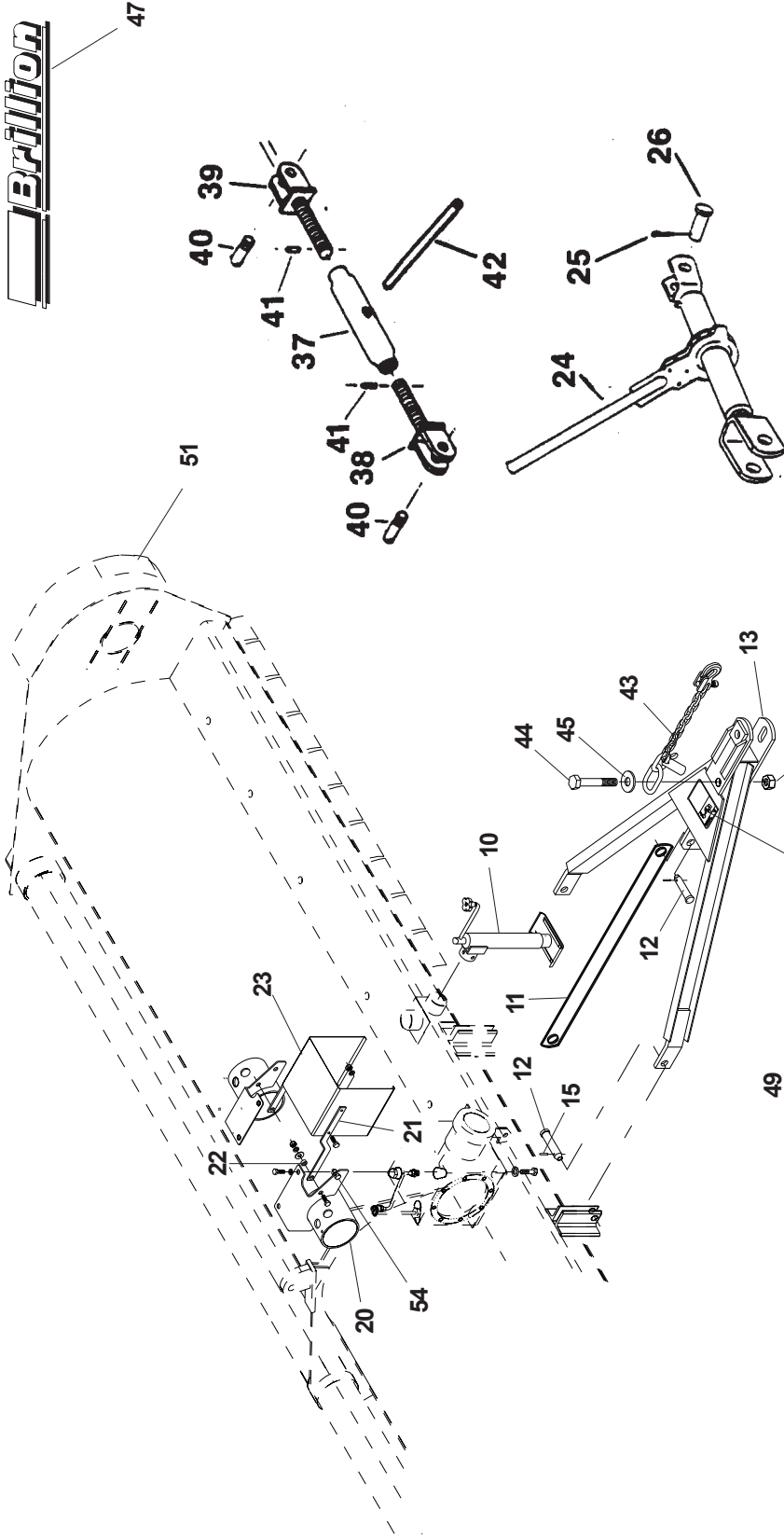
Hood & Hitch Assembly .....	2 - 3B
Flail Assembly .....	4, 5
Gearbox Assembly .....	6, 7
Gearbox (Prairie Gear Mfg. Co.) Assembly .....	7A, 7B
Wheel Arm Assembly .....	8, 9
Driveline Assemblies .....	10, 11





HOOD & HITCH ASSEMBLY				
Index #	Part #	Description	Q'ty	Weight
1	3K-664	Main Frame Assembly	1	
2	8J-255	Pivot Tube	1	139
3	8J-187	Bearing	3	7.4
4	5D-954	Roll Pin, 5/16 x 4	4	.1
5	9D-923	Lube Fitting	3	--
6	4D-564	End Plate Stiffener	2	4.5
	1C-334	Capscrew, 1/2 x 1-1/4	4	.1
7	5D-302	Skirt Hanger Rod	2	5.5
7A	2C-864	Cotter Pin, 1/8 x 1	4	--
8	5D-410	Bolt, 3/4 x 6-1/2 Special	2	.7
9	7D-681	Skirt, 6-1/8	28	1
10-13		Items 10-13 found on Page 3A & 3B		
14	5D-411	Bolt, 3/4 x 8 Special	2	1
	1C-210	Nut, 3/4	4	.1
15	4C-446	Cotter Pin, 1/4 x 1-1/2	4	--
16	4D-620	Wear Plate	2	15.5
17	4D-575	Belt Guard Cover Assembly - R.H.	1	10.2
	4D-539	Belt Guard Cover Assembly - L.H.	1	10.2
18	1C-237	Capscrew, 5/16 x 3/4	6	--
	1C-362	Lockwasher, 5/16	6	--
	3C-127	Flat Washer, 5/16	6	--
19	1C-674	Capscrew, 1/2 x 1	18	.1
	1C-109	Lockwasher, 1/2	29	--
	1C-390	Nut, 1/2	22	--
20-26		Items 20-26 found on Page 3A & 3B		
27	1C-986	Cotter Pin	1	--
28	--	----	--	--
29	4C446	Cotter Pin	1	--
30	7C076	Roll Pin	2	--
31	5J572	Pin, 1" x 5 1/2" Long	1	1.2
32	8J-268	Clamp Plate	2	4.3
33	8J-191	Cylinder Arm	2	10
	4D-957	Capscrew, 3/4 x 2-1/4 (Gr. 5)	8	.4
	1C-211	Lockwasher, 3/4	8	--
	1C-210	Nut, 3/4	8	--
34	1K309	Flange Bearing, 1-3/4	2	5.4
34A	1K305	Grease Hose	2	-
	1K306	Malleable Lck Nut	4	-
	1K307	Pipe Bushing-spl.	4	-
35	8J-220	Belt Adjusting Plate Assembly	2	15
35A	1K308	Flange Bearing, 1 3/4	2	5.4
36	9J-816	Hose Holder	1	2.4

**Brilliant**



**CAUTION**

- DO NOT UNDER ANY CIRCUMSTANCES, ALLOW ANYONE TO REMAIN IN VICINITY OF MACHINE WHEN STARTING OR OPERATING.
- OPERATOR MUST REMAIN ON TRACTOR WHILE POWER TAKE OFF IS IN MOTION.
- NEVER MAKE ADJUSTMENTS, LUBRICATE, OR CLEAN MACHINE WITH ANY PART OF MACHINE IN MOTION.
- DO NOT PERMIT TRACTOR RIDERS OTHER THAN OPERATOR. DO NOT ALLOW ANYONE TO RIDE THE MACHINE.
- DO NOT OPERATE SHREDDER IN EXCESS OF STANDARD TRACTOR PTO SPEED.
- BE CAREFUL. OBSERVE ALL STANDARD SAFETY PRECAUTIONS.
- BLOCK UP MACHINE BEFORE ATTEMPTING SERVICE UNDER MACHINE. DO NOT USE HYDRAULIC CYLINDER TO SUPPORT MACHINE WHEN WORKING UNDER IT.

8D066

**WARNING**

**DO NOT GO NEAR LEAKS**  
HIGH PRESSURE OIL EASILY PUNCTURES SKIN CAUSING SERIOUS INJURY. IF INJURED, SEEK EMERGENCY MEDICAL HELP. IMMEDIATE SURGERY IS REQUIRED TO REMOVE OIL. DO NOT USE FINGERS OR SKIN TO LOWER LOAD OR RELIEVE HYDRAULIC PRESSURE BEFORE LOOSENING FITTINGS.

10813A

**LUBRICATION INSTRUCTIONS**

- GREASE P.T.O., JOINTS AND TELESCOPING SHAFT AND TUBE ASSEMBLY
- GREASE UNIVERSAL JOINT ON CROSS SHAFTS DAILY.
- GREASE THE SIX FLANGE BEARINGS AND THE THREE REAR PIVOT TUBE BEARINGS EVERY 40-50 HOURS. (THERE IS ONE FLANGE BEARING ON THE OUTER END OF EACH CROSS SHAFT AND ONE ON EACH END OF THE TWO ROTORS. THE BEARING ON THE INNER END OF EACH ROTOR IS MOUNTED ON THE CENTER PLATE OF THE MACHINE.)
- REPACK WHEEL BEARING ONCE A YEAR!
- CHECK OIL LEVEL IN GEARBOX BEFORE USING. MAINTAIN LEVEL WITH GRADE OF LUBRICANT. CHANGE OIL AT THE BEGINNING OF EACH SEASON.

8J273

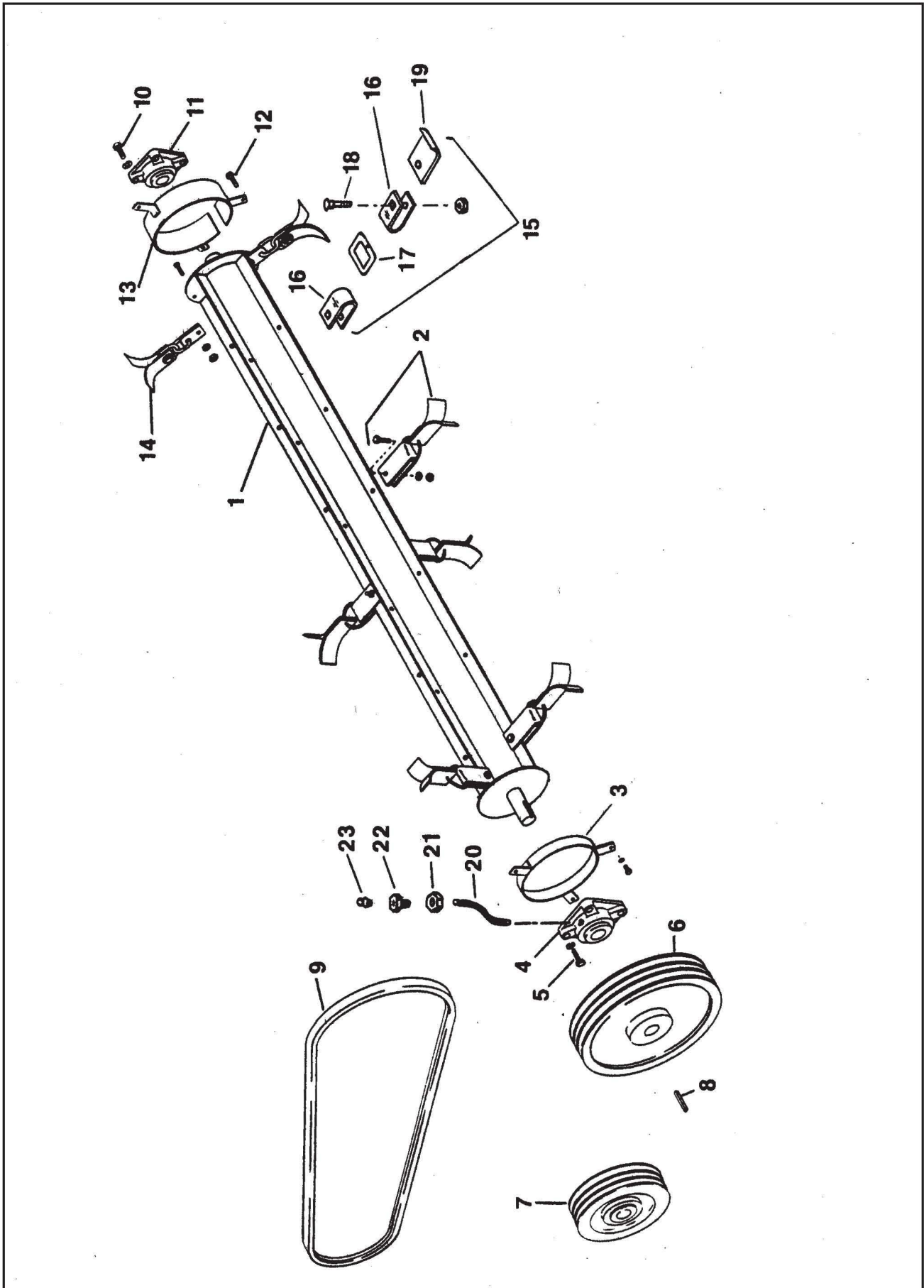
**WARNING**

**THROWN OBJECT HAZARD**  
TO PREVENT SERIOUS INJURY OR DEATH, KEEP OTHERS OUT OF VICINITY WHILE OPERATING. KEEP OTHERS OUT OF VICINITY WHILE OPERATING.

4#031

**CAUTION**  
THIS TRANSMISSION BOX IS FOR 540 RPM ONLY!

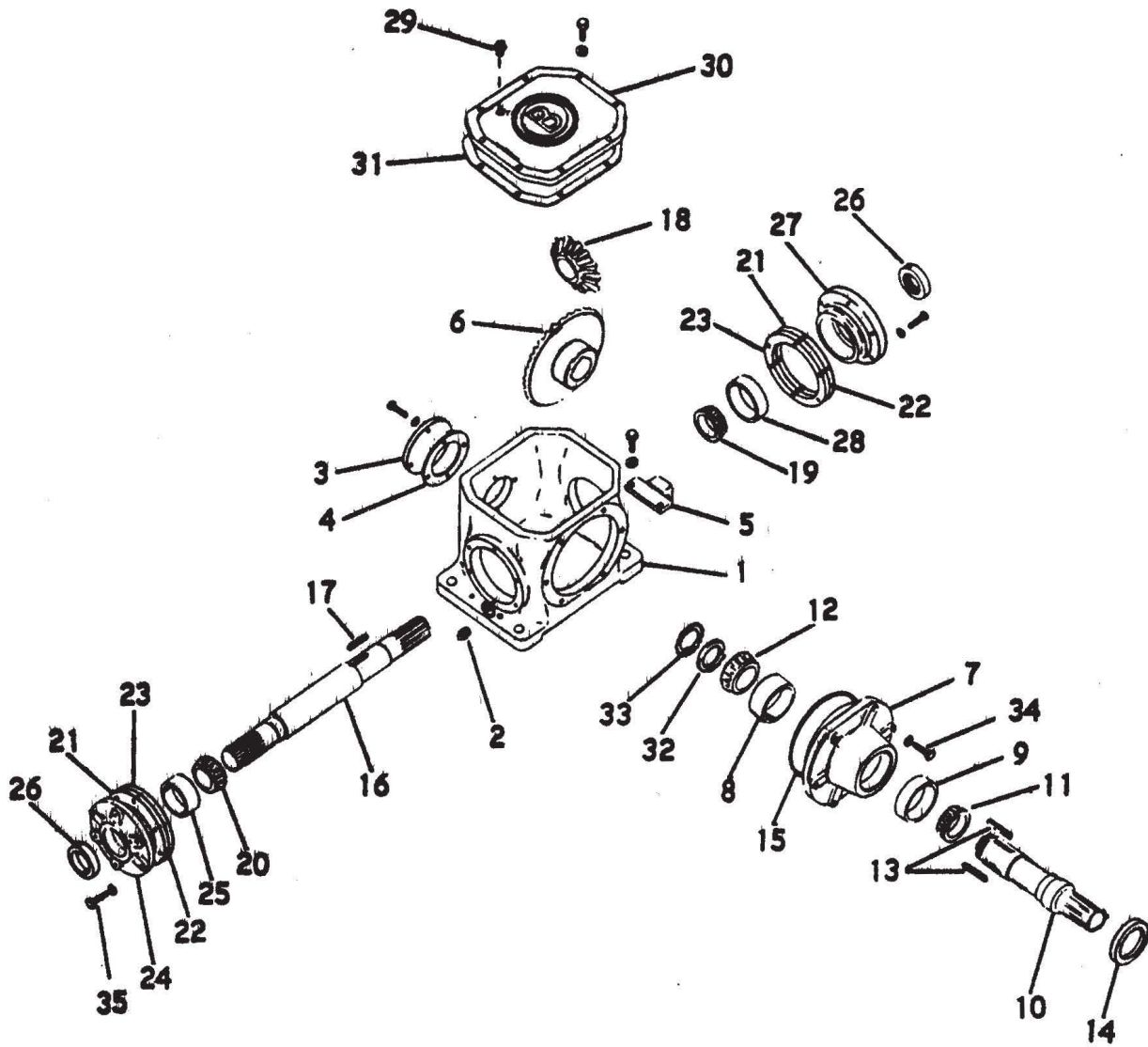
HOOD & HITCH ASSEMBLY (CONT'D)				
Index #	Part #	Description	Q'ty	Weight
10	3J-880	Jack	1	19
	6K458	Replacement Pin, 9/16" with chain & screw	1	.36
11	4D-557	Drawbar Link	2	3.7
12	4D-983	Clevis Pin, 1 x 2	4	.5
13	4D-543	Front Hitch Assembly	1	65
--				
20	3K-080	Bracket Assembly - R.H.	1	11
	3K-079	Bracket Assembly - L.H.	1	11
21	7D-019	Arm	2	.9
22	1D-991	Bushing	2	--
	1C-232	Capscrew, 3/8 x 1-1/4	2	--
23	7D-020	Shield	1	2.8
24	7J-237	Ratchet Jack	1	15.0
25	8D-099	Clevis Pin	2	.95
26	6C-468	Cotter Pin	2	.02
--				
37	8D-597	Turnbuckle Body	1	2.5
38	8J-205	Yoke Assembly - R.H. Thrd.	1	3.2
39	8J-204	Yoke Assembly - L.H. Thrd.	1	3.2
40	6C-703	Pin Assembly	2	.7
41	7C-870	Roll Pin, 3/16 x 1-1/8	2	--
42	8D-590	Rod	1	1
	7C-940	Roll Pin, 3/16 x 7/8	2	--
	1K822	Safety Chain Kit	1	
43	1K731	Safety Chain	1	
44	6D528	Machine Bolt, 1-8 x 6, Grade 5	1	
45	1C787	Flat Washer, 1"	1	
46	6D306	Stover Nut, 1-8 NC Hex	1	
47	4K039	Decal, Large "Brillion" 3 3/4" x 40"	2	-
	4K036	Decal, Small "Brillion" 2 3/4" x 20"	2	-
48	3K706	Decal, Warning-Hydraulic Leaks	1	-
49	5D006	Decal, "Caution"	1	-
50	8J273	Decal, "Lubrication Instruction"	1	-
51	2J430	Decal, Reflective Red	2	-
	2J431	Decal, Reflective Amber	2	-
52	4K031	Decal, "Warning"	1	-
53	5D019	Decal, "Caution" (540 R.P.M.)	1	-
	5D020	Decal, "Caution" (1000 R.P.M.)	1	-
54	4C803	Capscrew, 3/8"-16 NC x 1"	2	-
	1C182	Flat Washer, 3/8"	8	-
	1C183	Lockwasher, 3/8"	2	-
	1C277	Nut, 3/8-16 NC	2	-





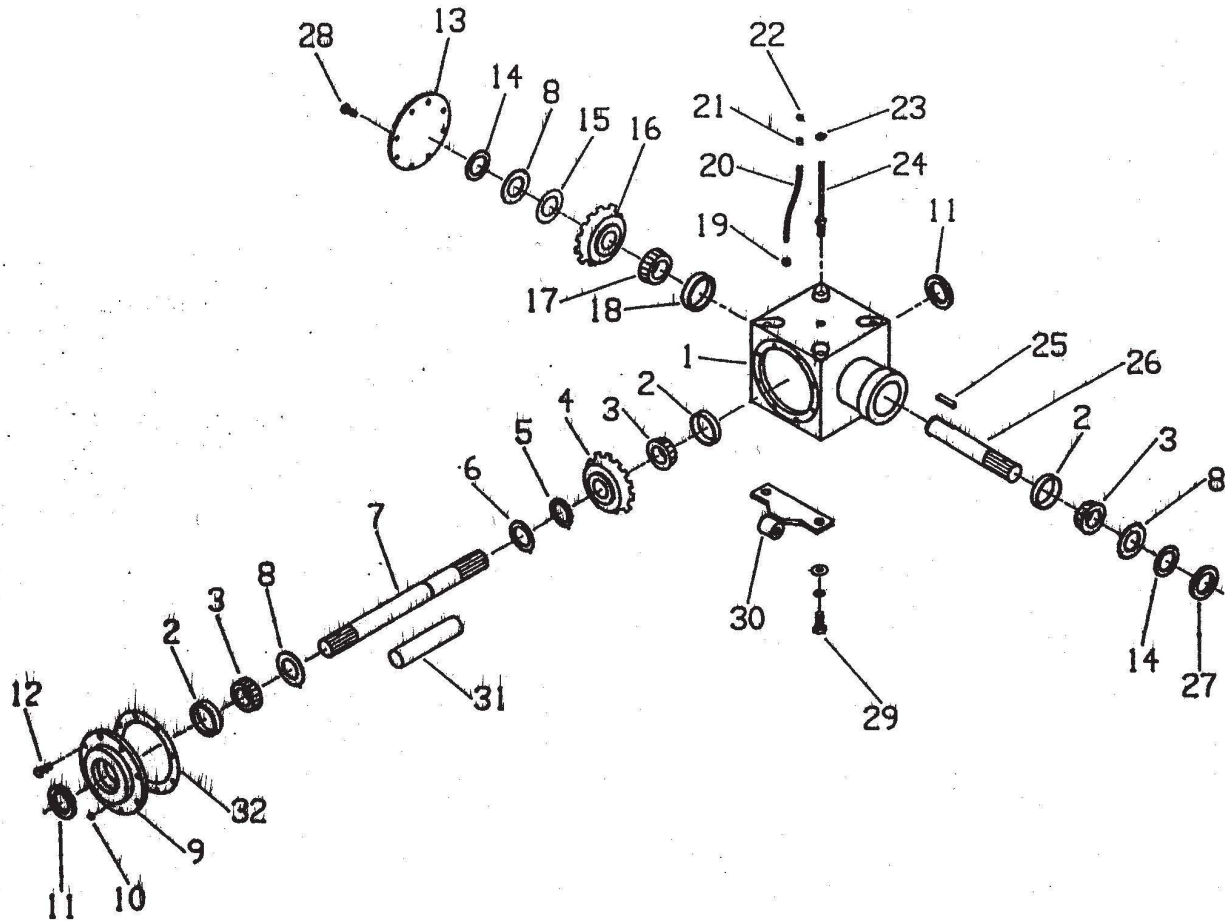
FLAIL ASSEMBLY				
Index #	Part #	Description	Q'ty	Weight
1	9D-919	*Flail Assembly - Side Slice Knives	2	270
	8J-757	*Flail Assembly, L.H. - Cup Knives	1	264
	8J-758	*Flail Assembly, R.H. - Cup Knives	1	264
	1K169	*Flail Assembly, L.H. - Side Slice & Cup Knives	1	267
	1K170	*Flail Assembly, R.H. - Side Slice & Cup Knives	1	267
2	4D-602	Knife Assembly - Side Slice	64	3.2
	5D-183	"D" Ring & Knife Assembly	64	1.7
	5D-053	Knife - Side Slice	128	.5
	5D-052	"D" Ring	64	.7
	5D-054	"U" Bracket	64	1.2
	5D-333	Retainer	64	.2
	5D-051	Capscrew, 1/2 x 1-3/4 (Gr. 5)		.2
	5D-304	Lock Nut, 1/2		.1
3	4D-579	Flail Bearing Shield - End	2	2.5
	4C-437	Capscrew - Drilled, 1/2 x 1-1/2	3	.1
4	1K309	Flange Bearing, 1-3/4	2	5.4
5	4D-538	Capscrew - Drilled, 5/8 x 2 (Gr. 5)	8	.2
	4D-529	Nut, 5/8 Slotted	8	--
	1B-166	Lockwasher, 5/8	8	--
	2C-298	Cotter Pin, 1/8 x 1-1/4	15	--
6	5D-328	Pulley, 3C-14" P.D.	2	50
	6D-927	"E" Hub, 1-3/4 w/Bolts	4	7
7	5D-329	Pulley, 3C-8.5" P.D.	2	31
	6D-927	"E" Hub, 1-3/4 w/Bolts	4	7
8	5D-479	Key, 3/8 sq. x 2-5/16	2	--
	5D-511	Roll Pin, 1/8 x 1/2	2	--
9	5D-875	Belt C75, Matched Set of 3	2	1.5
10	8D-350	Capscrew - Drilled, 1/2 x 2-1/4 (Gr. 8)	4	.2
	2C-290	Nut, 1/2 Slotted	4	--
11	4D-645	Flange Bearing, 1-1/2	2	4.7
12	1C-674	Capscrew, 1/2 x 1	18	.1
	1C-390	Nut, 1/2	22	--
	1C-109	Lockwasher, 1/2	29	--
13	4D-581	Flail Bearing Shield - Center	2	1.5
14	5D-044	Center Cut Knife Assembly (optional)	4	2.7
	5D-076	2-Link Chain Assembly (Less Knives)		
	5D-216	Guard, 4-3/4 Wide	2	2.2
15	8J-807	Cup Knife Assembly, incl. attaching hardware	64	3
16	8J-756	U-Bar	128	.6
17	8J-755	Square Ring	64	.5
18	9J571	Carriage Bolt, Gr. 5, 1/2 x 1 3/4" Full Body	128	.2
	5D-304	Lock Nut, 1/2"	128	.1
19	8J-754	Cup Knife	64	.9
20	1K-305	Grease Hose	4	.1
21	1K-306	Malleable Lock Nut, 1/2 N.P.T.	4	--
22	1K-307	Pipe Bushing - Special	4	--
23	9D-923	Grease Fitting	4	--
* Assembled and balanced at factory				

MODEL FS-1445, FS-1805  
MODEL FSC-1445, FSC-1805

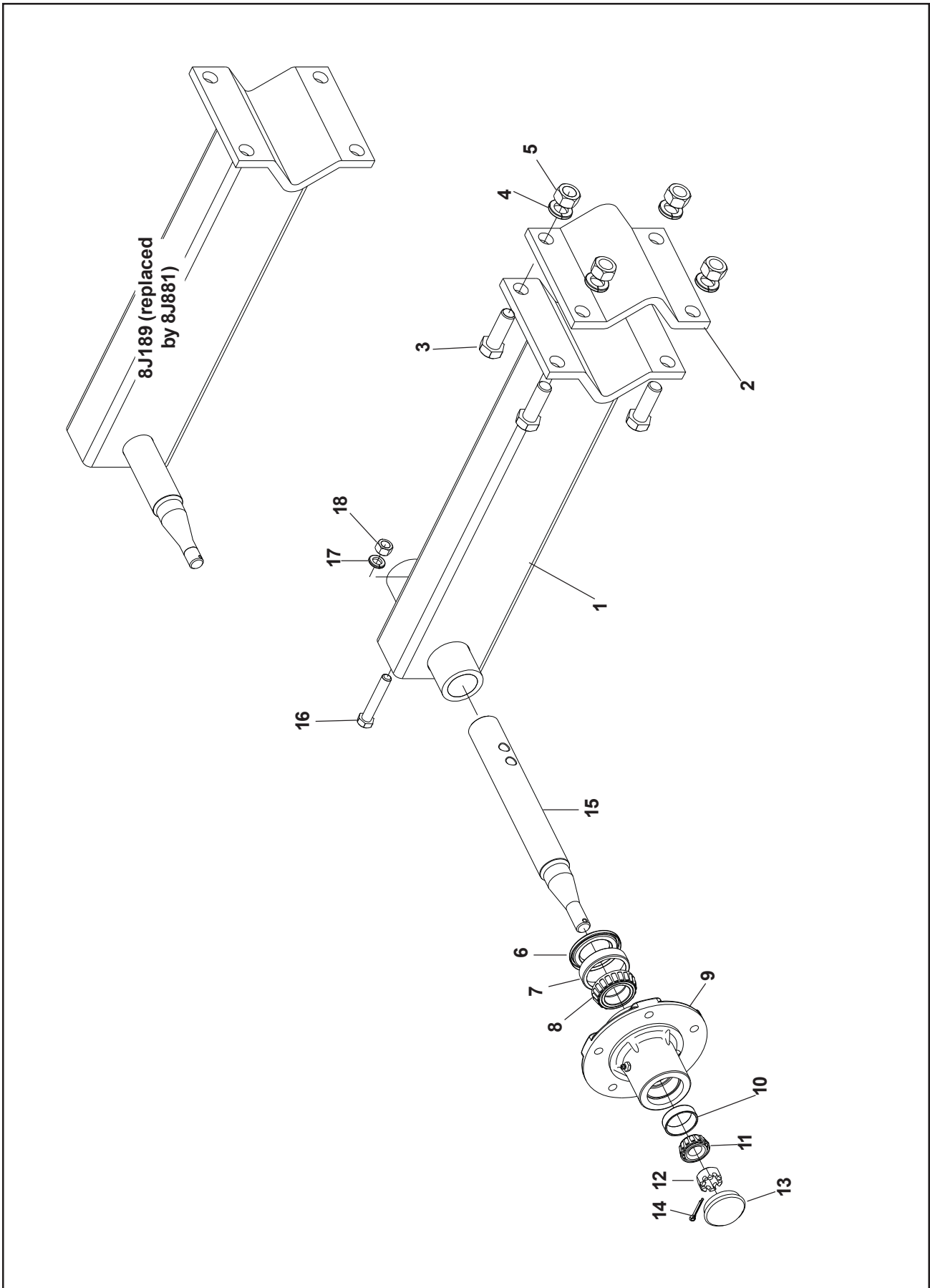


GEARBOX ASSEMBLY (FS-1805, FSC-1805)				
Index No.	No. Part #	Description	Used	Weight
1	4D-635	Gearbox Assembly (1000 R.P.M.)	1	
	4D-636	Gearbox Assembly (540 R.P.M.)		
	4D-705	Drive Gear Housing		
59.3				
2	9C-369	Capscrew, 3/4 x 3	4	.2
	1C-211	Lockwasher, 3/4	4	--
	1C-210	Nut, 3/4	4	--
3	7C-403	Pipe Plug	2	.1
4	4D-714	Cover, Back	1	1.3
	4C-803	Capscrew, 3/8 x 1	12	.1
	1C-183	Lockwasher, 3/8	12	--
5	4D-715	Gasket, Back Cover	1	.1
6	5D-426	Adjusting Block	2	1.8
	1C-334	Capscrew, 1/2 x 1-1/4	4	.1
	1C-109	Lockwasher, 1/2	4	--
10.3	4D-701	Drive Gear, 28 Tooth (1000 R.P.M.)	1	
7	4D-703	Drive Gear, 30 Tooth (540 R.P.M.)	1	23
	4D-708	Bearing Carrier	1	18
	4D-633	Bearing Cup, #39520	1	.8
8	4C-832	Bearing Cup, #362A	1	.4
9	5D-481	Drive Shaft	1	8.8
10	4D-630	Bearing Cone, #368-S	1	.8
11	4D-632	Bearing Cone, #39575	1	.3
12	4D-716	Key, 3/8 Sq. x 1 29/32 Long	2	.1
13	4C-831	Oil Seal, 3-1/2 O.D.	1	.5
14	4D-724	"O" Ring Seal	1	.1
15	4D-707	Driven Shaft	1	
15.3				
16				
17	4D-717	Key, 3/8 Sq. x 1-13/16 Long	2	.1
18	4D-702	Gear, 28 Tooth (1000 R.P.M.)	1	13
19	4D-704	Gear, 16 Tooth (540 R.P.M.)	1	4.5
	4D-628	Bearing Cone, #3779	1	1.4
	3D-531	Bearing Cone, #LM603049	1	.5
20	4D-874	Shim (.005 Thick)		--
21	4D-875	Shim (.007 Thick)		--
22	5D-046	Shim (.010 Thick)		--
23	4D-709	Bearing Carrier, R.H.	1	6.5
24	3D-532	Bearing Cup, #LM603011	1	.3
25	4C-830	Oil Seal, 2-3/4 O.D.	2	.2
26	5D-130	Bearing Carrier, L.H.	1	5.8
27	4D-629	Bearing Cup, #3720	1	.7
28	5C-573	Breather	1	.1
29	3D-978	Bushing, 1/8 x 1/2	1	--
30	4D-711	Cover, Top	1	7.5
31	4D-712	Gasket, Top Cover	1	.2
32	4D-624	Bearing Locknut	1	.3
33	4D-625	Bearing Lockwasher	1	.1
34	8C-036	Capscrew, 3/8 x 1-3/4 (Gr. 5)	6	.1
35	4D-904	Capscrew, 3/8 x 1-1/2 (Gr. 5)	12	.1

MODELS: FS-1446 FS-1806 FSC-1446 FSC-1806

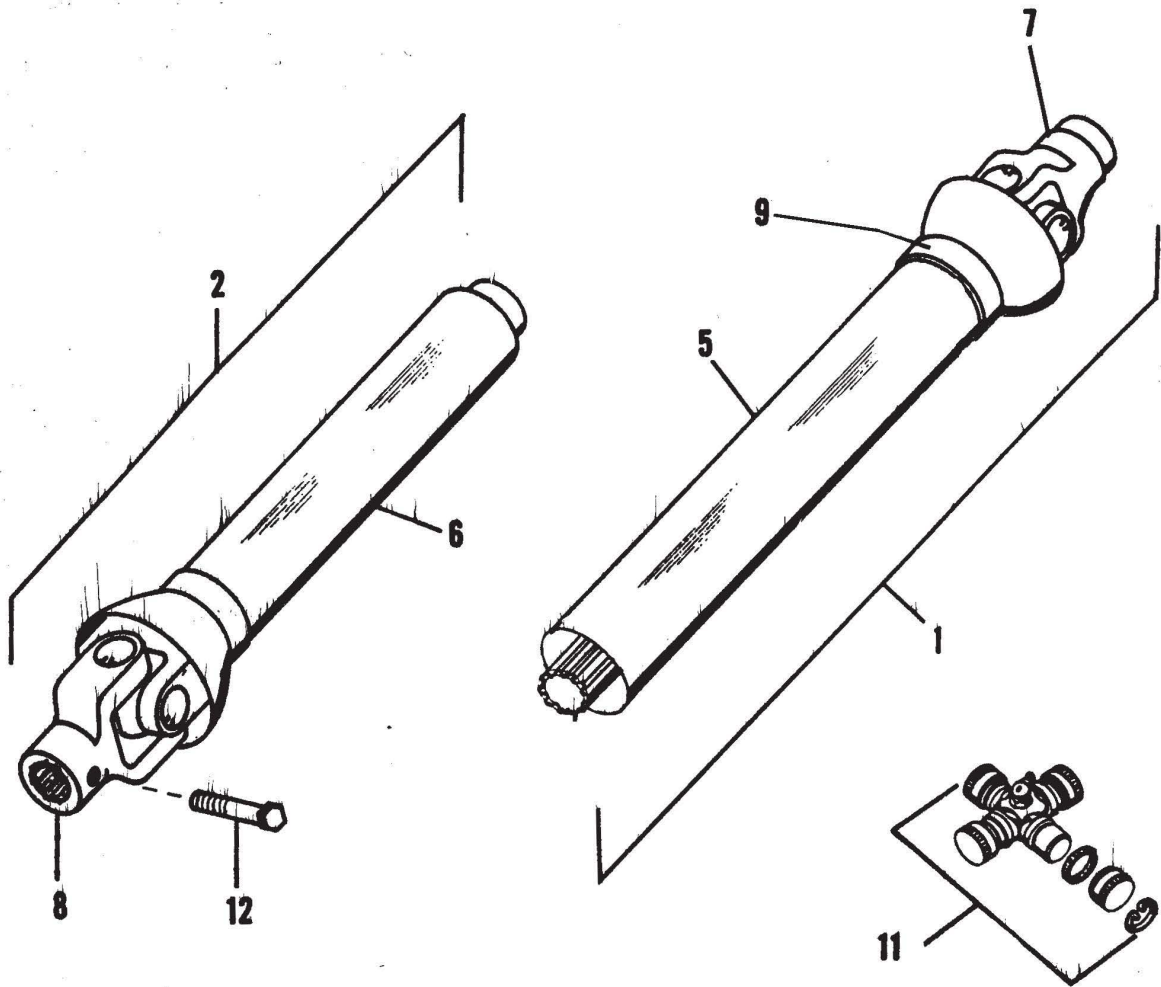


GEARBOX ASSEMBLY (Prairie Gear Mfg. Co.)				
Index No.	Part #	Description	No. Used	Weight
	3K099	Gearbox Assembly (1000 R.P.M.)		
	3K098	Gearbox Assembly (540 R.P.M.)		
1	3K-343	Gearbox	1	
2	1D758	* Bearing Cup #25520	3	
3	1D759	* Bearing Cone #25580	3	
4	3K344	Gear - 22T (1000 R.P.M.)	2	
	3K345	Gear - 16T (540 R.P.M.)	1	
5	3K346	Spacer (540 R.P.M. only)	1	
6	3K381	Snap Ring (1000 R.P.M.)	3	
	3K382	Snap Ring (540 R.P.M.)	1	
7	3K364	Driven Shaft (1000 R.P.M.)	1	
	3K365	Driven Shaft (540 R.P.M.)	1	
8	3K366	Washer, 1-3/4 I.D. x 3/16 Thick	3	
9	3K367	Cover	1	
10	9C855	Pipe Plug, 1/4 N.P.T.	1	
11	3K383	Seal	2	
12	4C803	Capscrew, 3/8 x 1	8	
	1C183	Lockwasher, 3/8	8	
13	3K368	Cover	1	
14	3K381	Snap Ring	2	
15	3K369	Shim, 1-3/4 I.D. x .007		
16	3K344	Gear - 22T (1000 R.P.M.)	2	
	3K370	Gear - 29T (540 R.P.M.)	1	
17	3K384	* Bearing Cone #3782	1	
18	3K385	* Bearing Cup #3730	1	
19	3D978	Bushing 1/2 x 1/8	1	
20	1K305	Grease Hose	1	
21	3K089	Pipe Coupling	1	
22	3K371	Pressure Vent (Breather Plug)	1	
23	3K090	Hose Clamp	1	
24	3K083	Rod Weldment	1	
25	3K372	Key, 3/8 square x 1-7/16	1	
26	3K373	Drive Shaft	1	
27	3K386	Seal	1	
28	5C865	Capscrew, 3/8 x 3/4	8	
	1C183	Lockwasher	8	
29	5C460	Capscrew, 5/8 x 2"	4	
	1C122	Flat Washer, 5/8	4	
	1B166	Lockwasher	4	
30	3K648	Gearbox Adjusting Weldment	2	
31	3K374	Spacer Tube (1000 R.P.M. only)	1	
32	3K375	Shim		
*purchase these parts through local vendor				

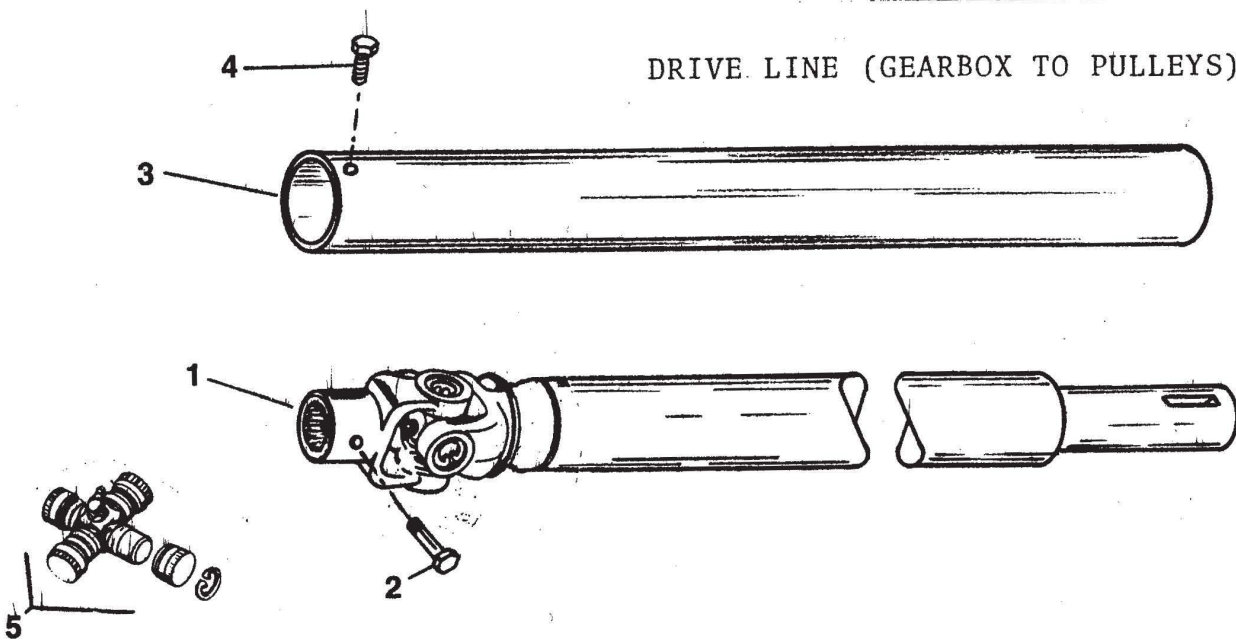


WHEEL ARM ASSEMBLY				
Index No.	No. Part #	Description	Used	Weight
1	8J881 8J189	Wheel Arm Assembly w/ Welded Spindle replaced by 8J881	2	
2	8J-300	Clamp Plate	2	8.5
3	4D-957	Capscrew, 3/4 x 2-1/4 (Gr. 5)	8	.4
4	1C-211	Lockwasher, 3/4	8	--
5	1C-210	Nut, 3/4	8	.1
6	1D273	Seal	2	.1
7	5C-480	Bearing Cone, #LM48548	2	.2
8	5C-479	Bearing Cup, #LM48510	2	.1
9	1J-390	Wheel Hub	2	8.6
10	5C-912	Bearing Cup, #LM11910	2	.1
11	5C-911	Bearing Cone, #LM11949	2	.2
12	3C-173	Slotted Nut, 3/4 - 16	2	.1
13	1J-463	Hub Cap	2	.2
14	3C-350	Cotter Pin, 5/32 x 1	2	--
15	5J467	Spindle	2	6.9
16	8C528	Capscrew, 1/2-13 NC x 3" Gr. 5	2	
17	1C109	Lock Washer, 1/2"	2	
18	1C390	Nut, 1/2-13 NC Hex	2	
*	6J-189	Wheel, 5 Bolt (15 x 8 LB)	2	24
*	5C-100	Wheel Bolt	10	.1
*		Not Shown		

DRIVE LINE (TRACTOR TO GEARBOX)



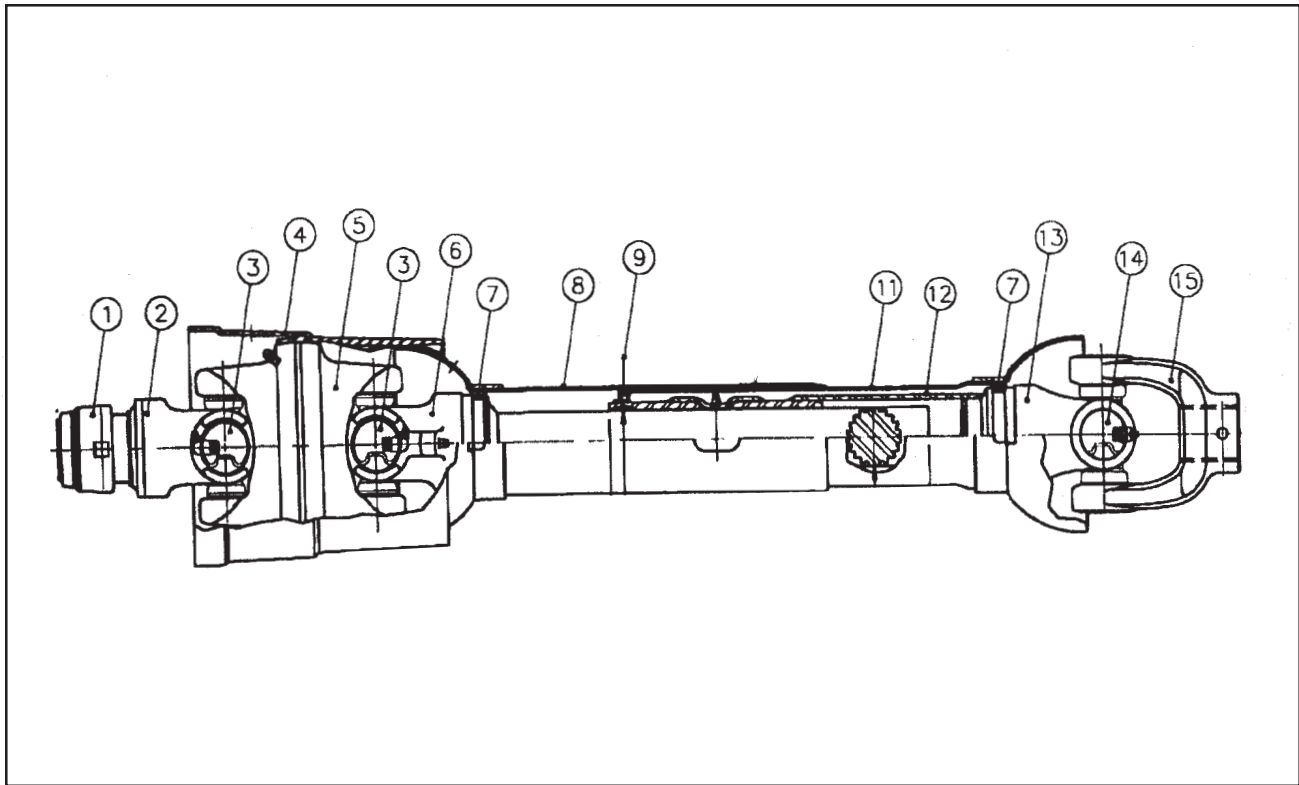
DRIVE LINE (GEARBOX TO PULLEYS)





DRIVE LINE (TRACTOR TO GEARBOX)				
Index No.	Part #	Description	No. Used	Weight
1	6K226	P.T.O. Assembly - 1000 R.P.M.w/ C/V & O/R Clutch (#1 and #2)	1	
	8J-259	P.T.O. Assembly - 1000 R.P.M. w/ O/R Clutch (#1 and #2)		
2	8J-260	P.T.O. Assembly - 540 R.P.M. w/ O/R Clutch(#1 and #2)	1	
	8J-286	Shaft and Joint Assembly - 1000 R.P.M.		
3	8J-287	Shaft and Joint Assembly - 540 R.P.M.	1	
	8J-288	Tube and Joint Assembly		
4	—	—		
5	8J-291	Outer Guard Assembly - Incl. Bearing	1	
6	8J-292	Inner Guard Assembly - Incl. Bearing	1	
7	8J-293	Slide Lock Yoke Assembly - 1000 R.P.M.	1	
	8J-294	Slide Lock Yoke Assembly - 540 R.P.M.		
8	8J-297	Slide Lock Repair Kit	-	
	4D-936	Yoke - Gearbox		
9	8J-295	Nylon Bearing and Retainer	2	.1
10	—	—		
11	1D-134	Joint Repair Kit	-	
12	1D-239	Capscrew, 5/16 x 3 (Gr. 5)	1	.1
	5C-724	Locknut, 5/16		

DRIVE LINE (GEARBOX TO PULLEYS)				
1	7D-213	Drive Shaft Assembly	2	33
	5D-508	TX Woodruff Key		
2	1D-239	Capscrew, 5/16 x 3 (Gr. 5)	2	.1
	5C-724	Locknut, 5/16		
3	8J-266	Shield Tube	2	21.8
4	8C-175	Capscrew, 5/16 x 1/2	2	--
5	5D-063	Joint Repair Kit		



**PTO-Assembly 1000 RPM (optional)**

Index #	Part #	Description	Q'ty	Weight
1	8J297	Safety Slide Lock Repair Kit	1	
2	6K900	Safety Slide Lock Yoke Assembly	1	
3	6K901	Cat. B Cross & Bearing Kit	2	
4	6K902	Bell Extension Kit (Not Sold Separately)	1	
5	6K903	Center Housing Assembly	1	
6	6K904	Yoke & Shaft	1	
7	8J295	Nylon Repair Kit	2	
8	3K696	Safety Sign	1	
9	6K905	Centralizer	1	
10	-	---	-	
11	6K907	Inner/Outer Guard Set	1	
12	7K009	Safety Sign	1	
13	6K908	Yoke, Tube & Slip Sleeve	1	
14	1D134	55R Cross & Bearing Kit	1	
15	4D936	Yoke	1	





Equipment from Landoll Corporation is built to exacting standards ensured by ISO 9001:2008 registration at all Landoll manufacturing facilities.

**LANDOLL CORPORATION**

1900 North Street

Marysville, Kansas 66508

(785) 562-5381

**800-428-5655 ~ [WWW.LANDOLL.COM](http://WWW.LANDOLL.COM)**



Copyright 2010. Landoll Corporation

"All rights reserved, including the right to reproduce this material or portions thereof in any form"

---