

REPAIR PARTS CATALOG



FIELD CULTIVATOR

MODELS FCP-1266 THRU FCP-2066
FCP-12661 THRU FCP-20661

IMPORTANT!

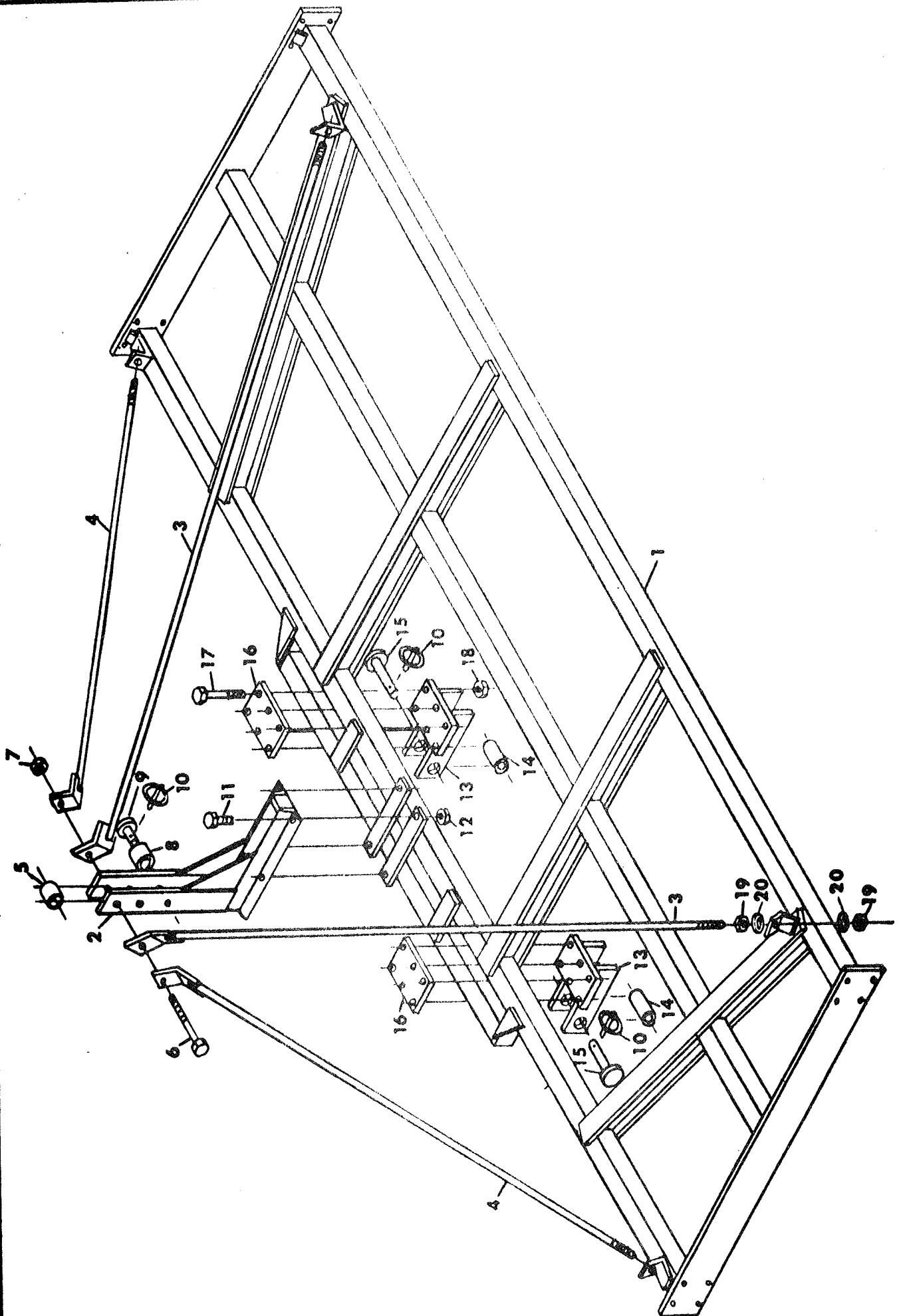
Repairs cannot be purchased retail direct from factory. Order through your Brillion dealer or any established implement dealer.

MODEL NO.

DATE PURCHASED

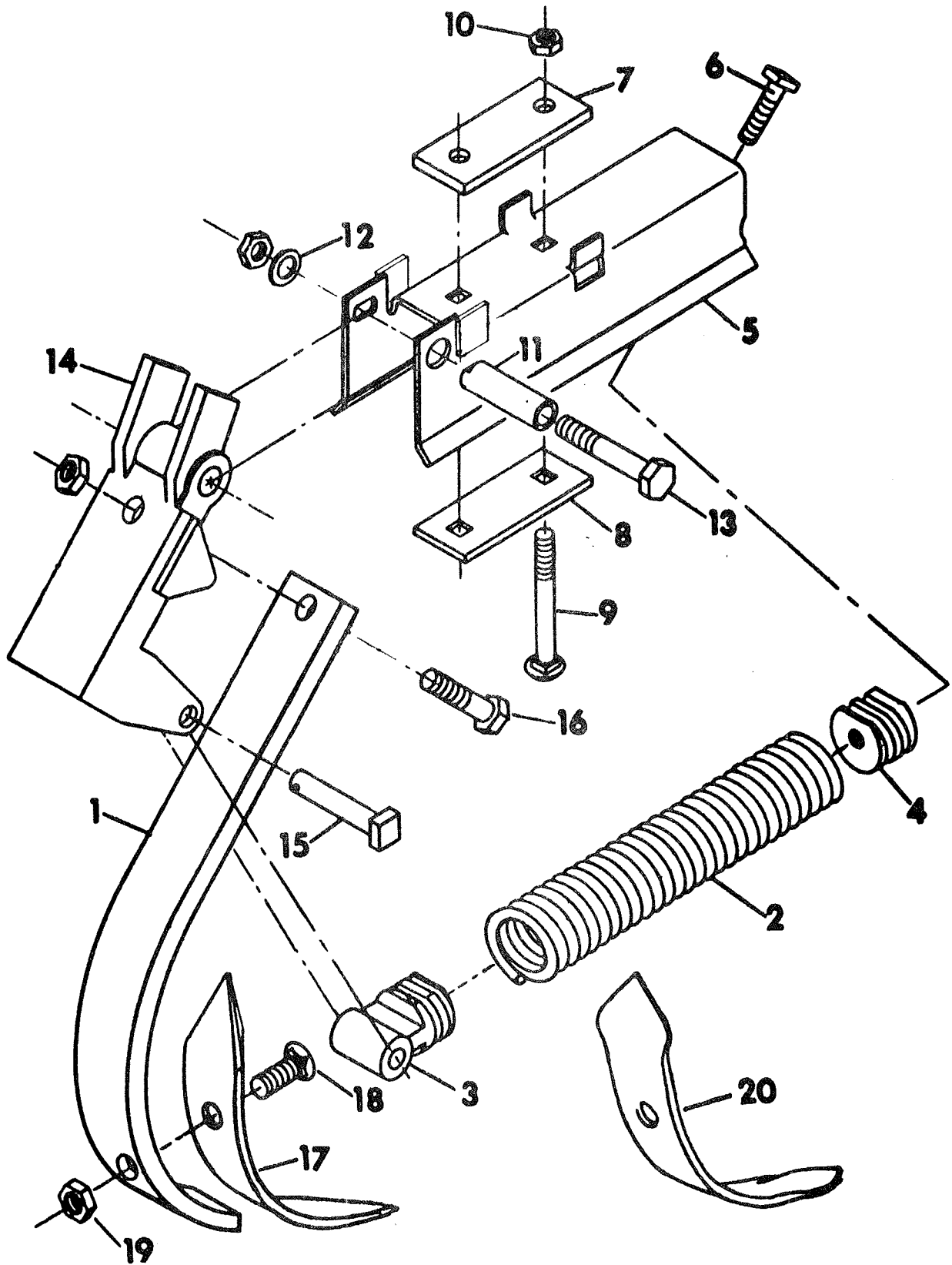


BRILLION IRON WORKS
BRILLION, WISCONSIN 54110



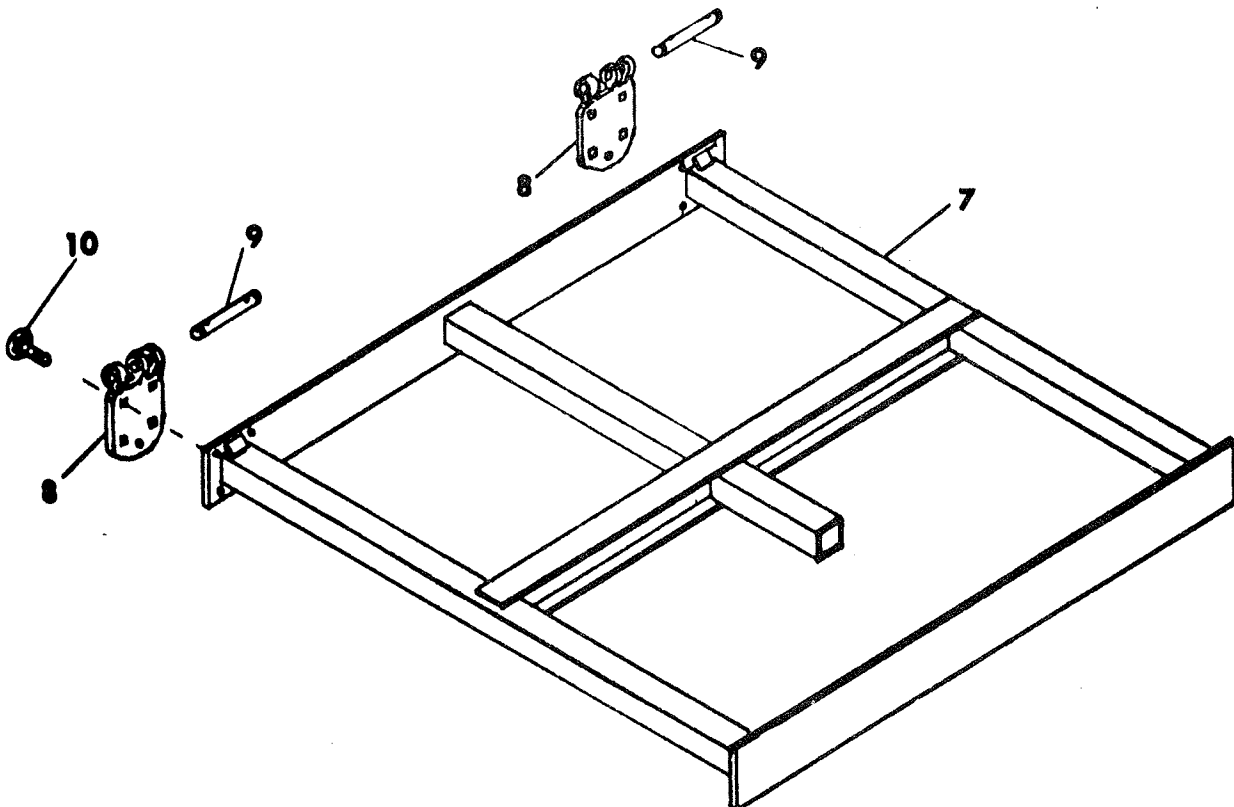
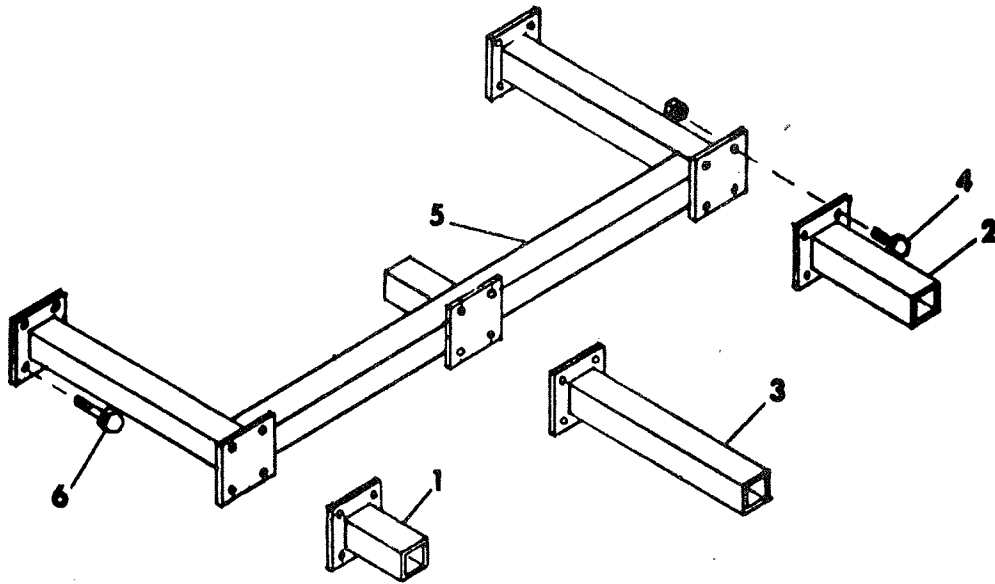
FRAME, MAST AND BRACE ASSEMBLY

Index No.	Part No.	Description	No. Used	Weight
1	8D-593	Center Frame	1	430.71
2	8D-554	Mast Assembly	1	33.97
3	8D-548	Brace Assembly Rod 82" Long	2	11.79
4	8D-549	Brace Assembly Rod 70" Long	2	10.15
5	6D-988	Spacer	1	.34
6	6D-287	Machine Bolt, 1-8 NC x 6-1/2" Lg., Grade 5	1	1.67
7	6D-306	Locknut, 1-8 NC (Stover)	1	
8	5D-157	Sleeve, 1-1/4" O.D. x 1-15/16" Long	1	.22
9	6D-529	Clevis Pin, 1" Dia. x 4-1/2" Long	1	
10	5D-110	Klik Pin	3	
11	2D-474	Capscrew, 5/8-11 NC x 1-3/4 Lg., Grade 5	4	
	1B-166	Lockwasher, 5/8" Med. Spring	4	
12	1C-392	Nut, 5/8-11 NC Regular Hex	4	
13	8D-564	Hitch Lug	2	13.07
14	5D-158	Sleeve, 1-7/16" O. D. x 2-7/8" Long	2	.52
15	5D-156	Clevis Pin, 1-1/8" Dia. x 5" Long	2	
16	8D-585	Plate	2	4.46
17	3D-751	Capscrew, 1/2-13 NC x 4-1/2 Lg., Grade 5	12	
	1C-109	Lockwasher, 1/2" Med. Spring	12	
18	1C-390	Nut, 1/2-13 NC Regular Hex	12	
19	6D-917	Nut, 3/4-10 NC Regular Hex	8	
20	1C-211	Lockwasher, 3/4" Med. Spring	8	



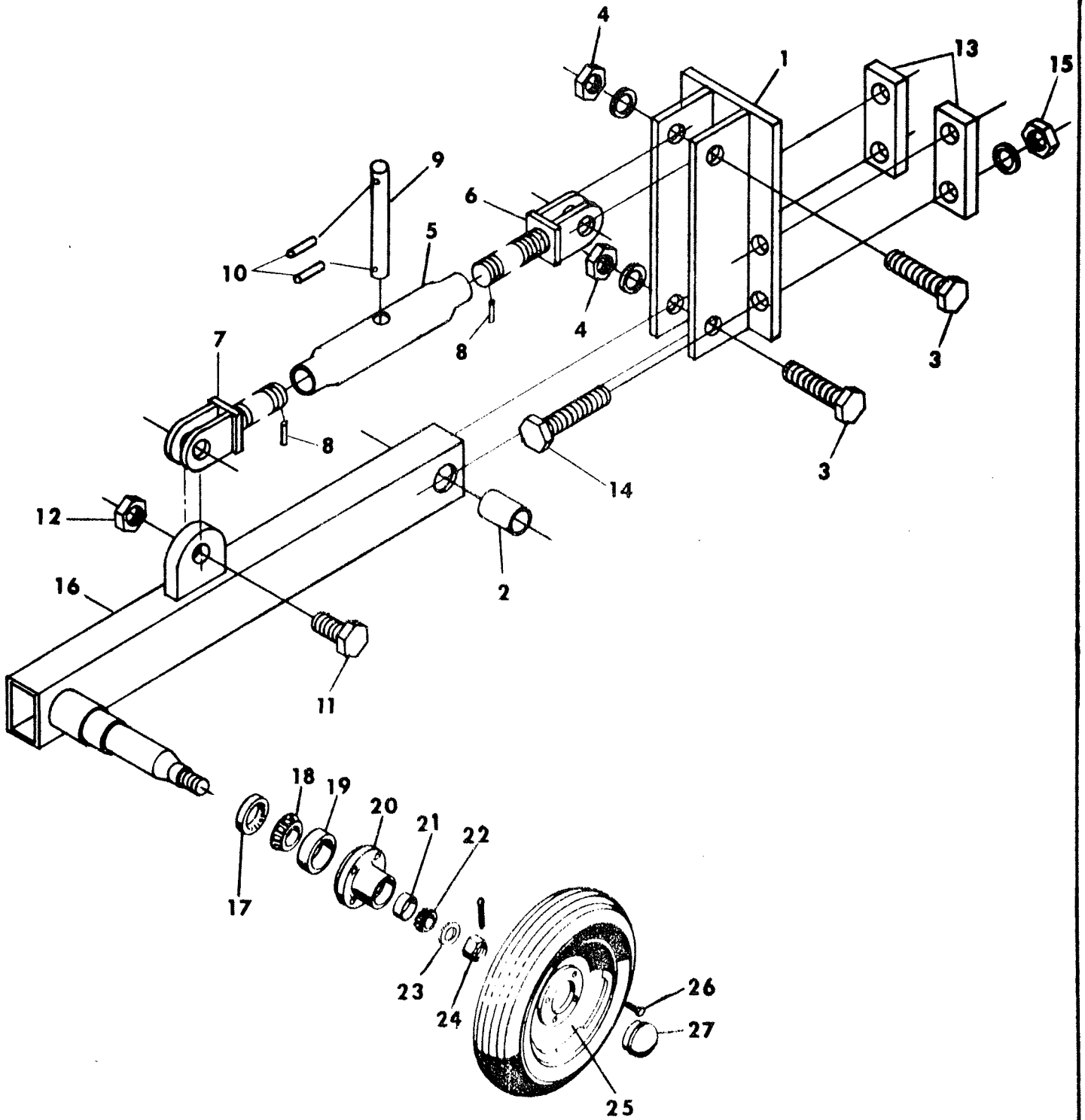
CULTIVATOR TOOTH ASSEMBLY

Index No.	Part No.	Description	No. Used	Approx. Weight
1	2J-143	Cultivator Tooth	1	6.2
2	8D-219	Extension Spring	1	4.6
3	8D-220	Spring Plug	1	1.1
4	8D-221	Spring Plug	1	.5
5	4J-582	Spring Holder	1	4.25
6	8D-349	Bolt, 1/2-13 NC x 3-1/4 Lg., Special Head	1	
7	8D-327	Strap	1	.95
8	8D-305	Strap	1	.42
9	8D-326	Carriage Bolt, 1/2-13 NC x 4 Lg., Grade 5	2	
10	5C-392	Locknut, 1/2-13 NC (Stover)	4	
11	9D-19	Bushing	1	.36
12	9C-134	Flat Washer, 1/2" SAE	2	
13	5D-871	Capscrew, 1/2-13 NC x 3-1/2 Lg., Grade 5	1	
14	8D-223	Tooth Clamp	1	6.75
15	8D-302	Pin, 1/2" Dia. x 3" Lg. Sq. Hd.	1	
	2C-864	Cotter Pin, 1/8" Dia. x 1" Lg.	1	
16	1D-237	Capscrew, 1/2-13 NC x 2" Lg., Grade 5	1	
17	8D-337	Reversible Tooth Point (Standard)	1	1.0
18	8D-301	Plow Bolt, 7/16-14 NC x 1-1/2" Lg., #3 Head	2	
	1C-314	Lockwasher, 7/16 Med. Spring	2	
19	1C-179	Nut, 7/16-14 NC	2	
20	2J-605	Reversible Tooth Point (Optional)	1	2.1



WING AND EXTENSION ASSEMBLIES

Index No.	Part No.	Description	Weight
1	8D-329	Stub Extension 5-1/2"	5.21
2	8D-330	Stub Extension 10"	7.31
3	8D-333	Stub Extension 17"	10.49
4	2D-474	Capscrew, 5/8-11 NC x 1-3/4" Long, Grade 5	
	1B-166	Lockwasher, 5/8 Med. Spring	
	1C-392	Nut, 5/8-11 NC Regular Hex	
5	8D-507	Wing, 18"	55.92
6	5C-460	Capscrew, 5/8-11 NC x 2" Long, Grade 5	
7	8D-537	Wing Assembly, 4 Foot	155.88
8	8D-659	Hinge Plate	5.0
9	8D-592	Hinge Pin, 3/4" x 6" Long	
	4C-446	Cotter Pin, 1/4 x 1-1/2" Long	
10	8D-658	Plow Bolt, 5/8-11 NC x 2" Long, #3 Head	



GAUGE WHEEL ASSEMBLY

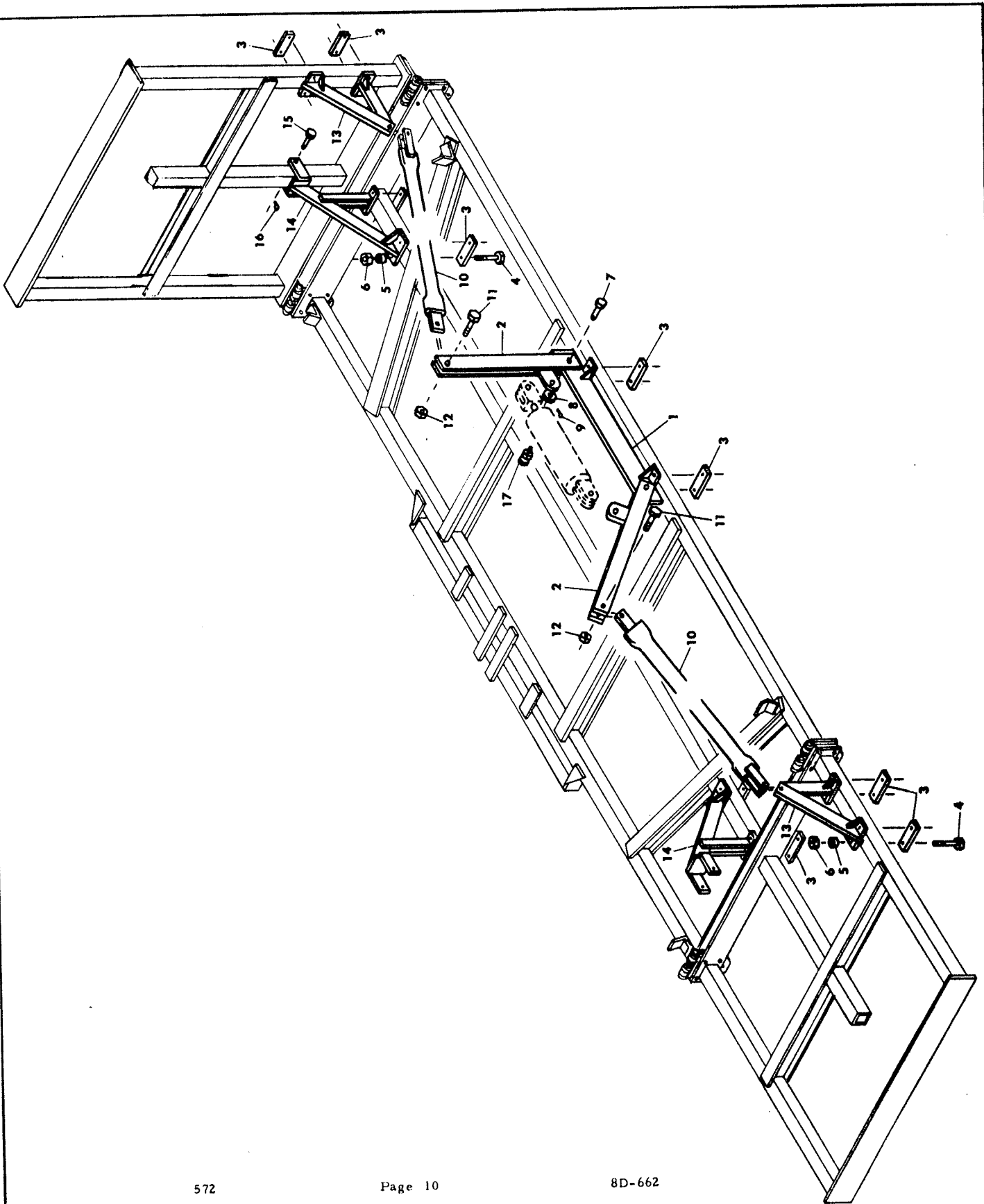
Index No.	Part No.	Description	No. Used	Weight
1	8D-577	Gauge Wheel Support	2	22.10
2	8D-581	Bushing	2	.45
3	6D-741	Capscrew, 3/4-10 NC x 4" Lg., Grade 5	4	
	1C-211	Lockwasher, 3/4" Med. Spring	4	
4	1C-210	Nut, 3/4-10 NC, Reg. Hex	4	
5	8D-597	Turnbuckle Body	2	2.5
6	8D-601	R. H. Screw Assembly	2	2.68
7	8D-602	L. H. Screw Assembly	2	2.68
8	7C-870	Roll Pin, 3/16" x 1-1/8 Long	4	
9	8D-590	Rod	2	1.04
10	7C-940	Roll Pin, 3/16" x 7/8" Long	4	
11	3D-510	Capscrew, 3/4-10 NC x 2-1/2 Lg., Grade 5	2	
12	6C-729	Nut, 3/4-10 NC Hex Stover	2	
13	8D-580	Strap	4	2.1
14	8D-84	Capscrew, 5/8-11 NC x 4-1/2 Lg., Grade 5	8	
	1B-166	Lockwasher, 5/8" Med. Spring	8	
15	1C-392	Nut, 5/8-11 NC Reg. Hex	8	

4 BOLT WHEEL ASSEMBLY

16	8D-558	Axle Assembly R. H.	1	32.42
	8D-559	Axle Assembly L. H.	1	32.42
17	5C-910	Seal	2	.13
18	5C-913	Bearing Cone #LM67048	2	.25
19	5C-914	Bearing Cone #LM67010	2	.7
20	5C-904	Hub	2	6.25
21	5C-912	Bearing Cup #LM11910	2	.2
22	5C-911	Bearing Cone #LM11949	2	.25
23	5C-907	Washer, 5/8" SAE Flat	2	
24	5C-909	Slotted Nut, 5/8-18 NF	2	.2
	3C-350	Cotter Pin, 5/32" Dia. x 1" Lg.	2	
25	7D-931	Wheel (15 inch - 4 bolt)	2	16.0
26	5C-100	Wheel Bolt	8	.2
27	5C-908	Hub Cap	2	.25

5 BOLT WHEEL ASSEMBLY

16	2J-632	Axle Assembly R. H.	1	37.42
	2J-633	Axle Assembly L. H.	1	37.42
17	1D-273	Seal	2	.1
18	5C-480	Bearing Cone #LM48548	2	.3
19	5C-479	Bearing Cup #LM48510	2	.2
20	1J-390	Hub	2	8.6
21	5C-912	Bearing Cup #LM11910	2	.2
22	5C-911	Bearing Cone #LM11949	2	.25
24	3C-173	Slotted Nut	2	.2
	3C-350	Cotter Pin 5/32" x 1" Lg.	2	
25	1J-684	Wheel (15 inch - 5 bolt)	2	16.0
26	5C-100	Wheel Bolt	10	.2
27	1J-463	Hub Cap	2	.8



HYDRAULIC WING LIFT FOR FCP-1066 & FCP-2066

Index No.	Part No.	Description	No. Used	Weight
1	8D-493	Center Bracket	1	28.33
2	8D-490	Lift Arm	2	26.10
3	8D-312	Strap	10	.95
4	3D-751	Capscrew, 1/2-13 NC x 4-1/2 Long, Grade 5	20	
5	1C-109	Lockwasher, 1/2 Med. Spring	20	
6	1C-390	Nut, 1/2-13 NC Regular Hex	20	
7	5D-12	Clevis Pin, 1" Dia. x 2-1/4" Long	2	
8	1C-871	Flat Washer, 1" SAE	2	
9	1D-594	Hairpin Cotter, 3-9/16" Long	2	
10	8D-561	Link Assembly	2	12.99
11	6D-742	Capscrew, 3/4-10 NC x 3" Lg., Grade 5	4	
12	6C-729	Locknut, 3/4-10 NC Hex (Stover)	4	
13	8D-568	Wing Lift Bracket	2	12.18
14	8D-571	Wing Stop	2	15.82
15	8D-382	Clevis Pin, 1/2" Dia. x 4" Long	2	
16	4C-856	Hairpin Cotter, 2-11/16" Long	2	
17	6D-716	Flow Restrictor Valve	1	

