

REPAIR PARTS CATALOG



FIELD CULTIVATOR

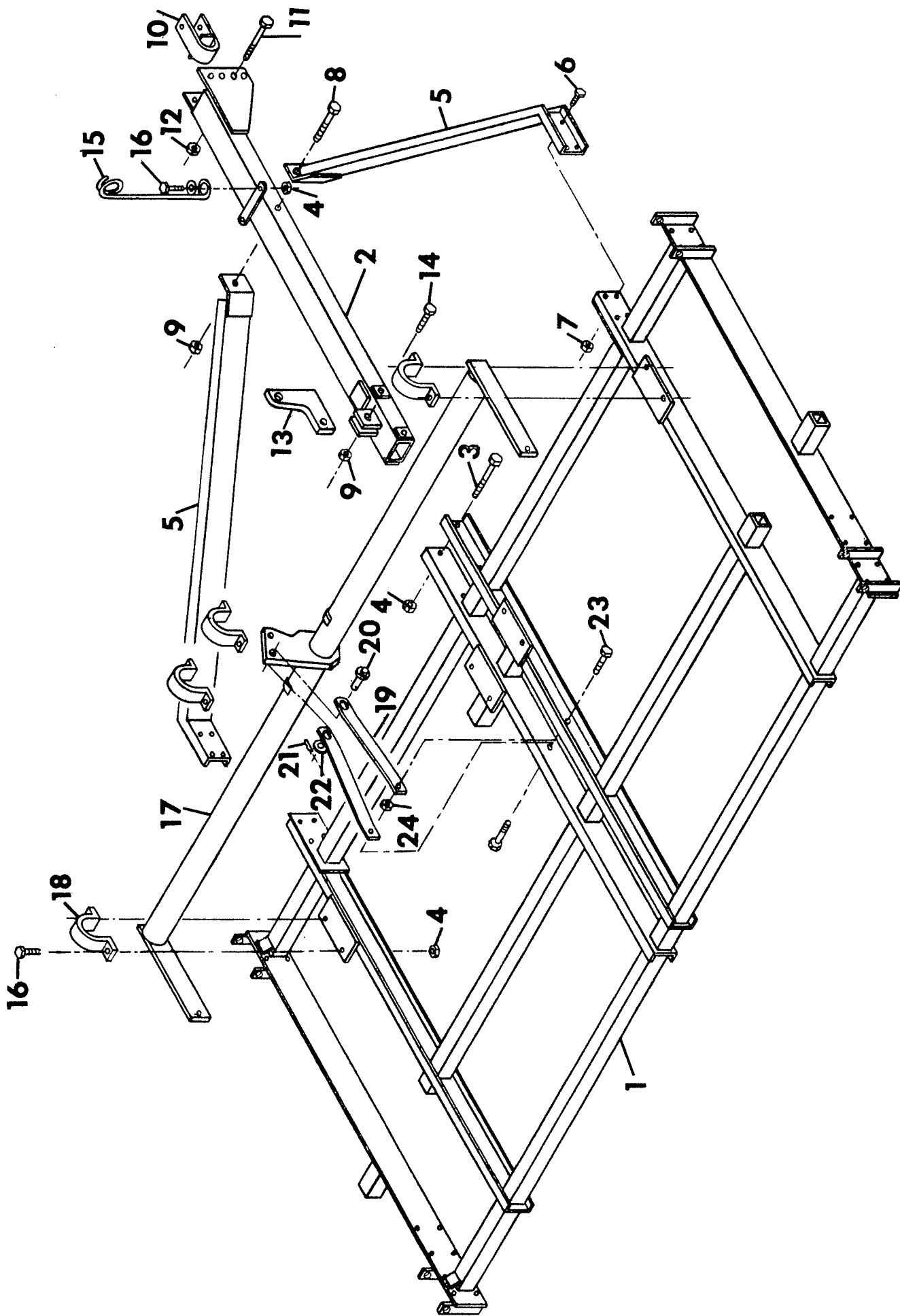
MODELS FC-1266 THRU FC-2066
 FC-1261 THRU FC-2061

**BRILLION IRON WORKS
BRILLION, WISCONSIN 54110**

<p>MODEL NO. DATE PURCHASED</p>

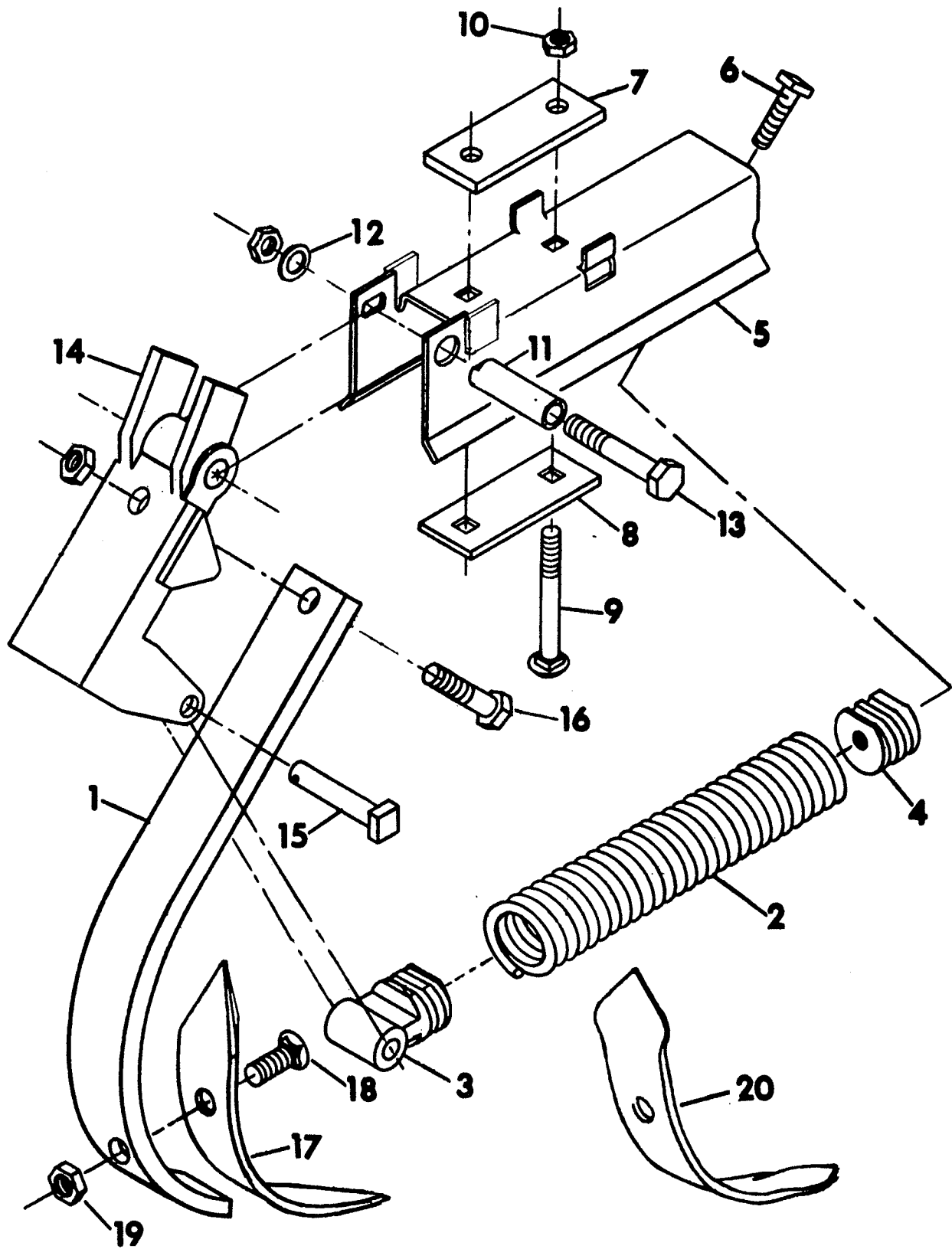
IMPORTANT!

Repairs cannot be purchased retail direct from factory.
Order through your Brillion dealer.



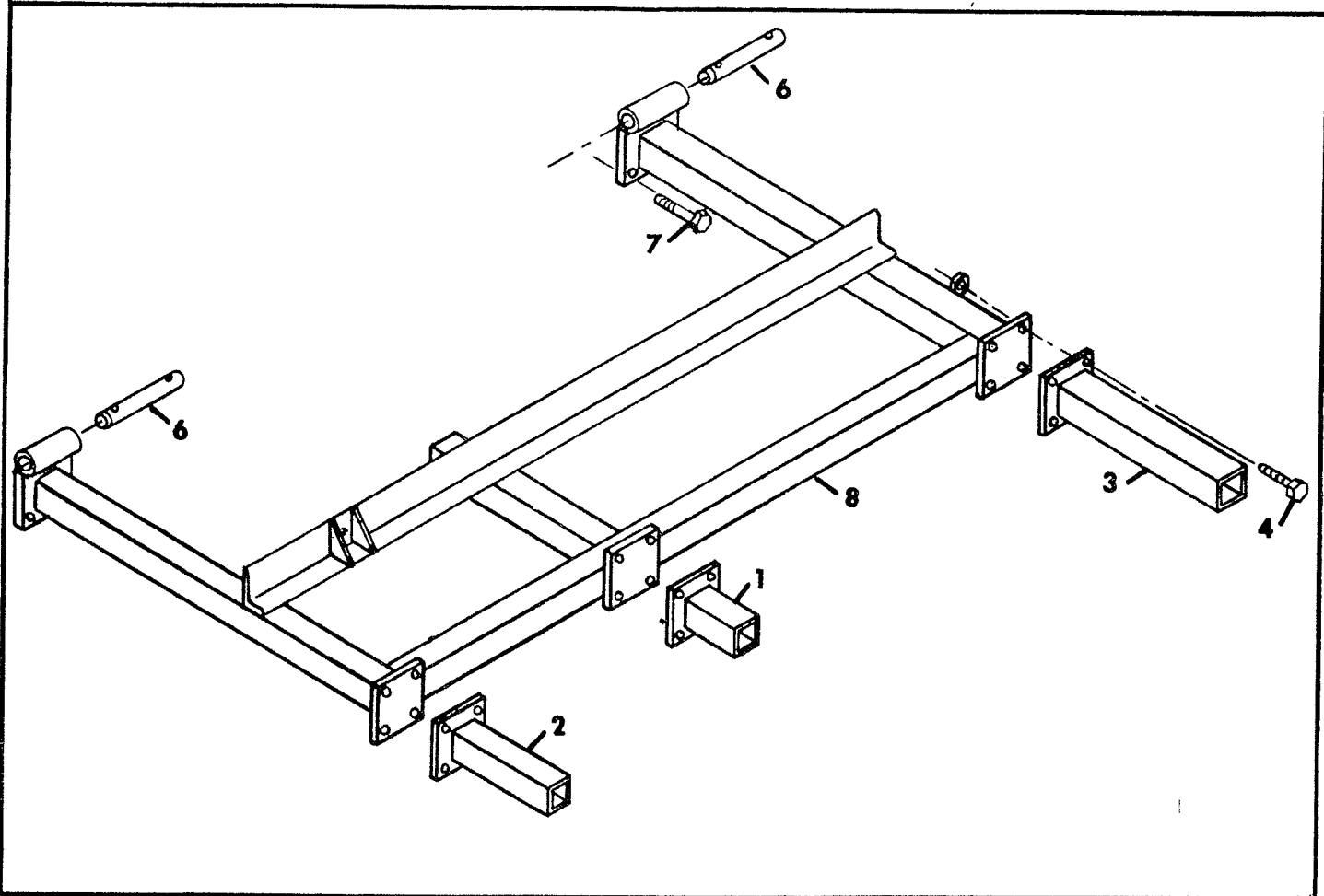
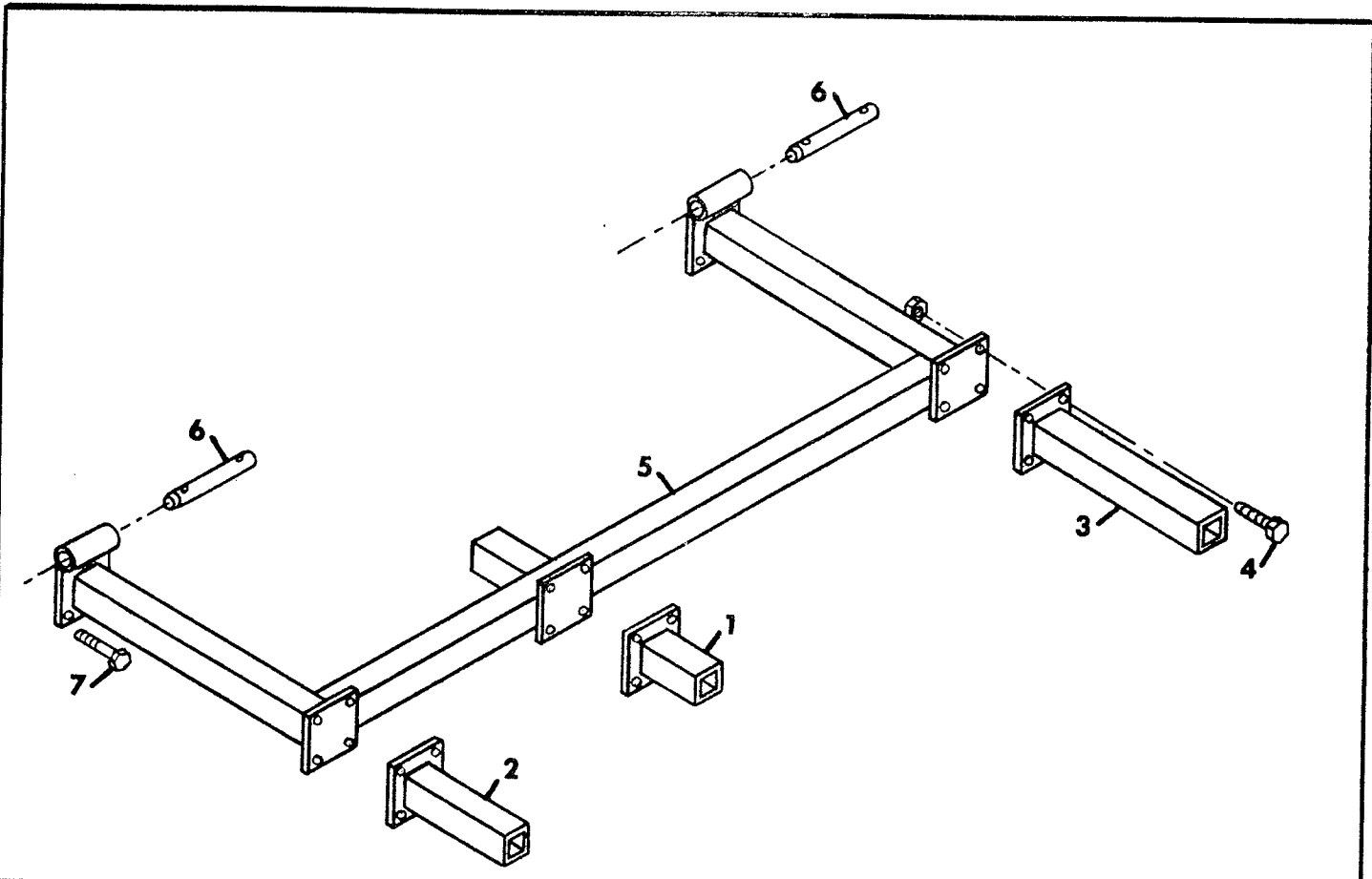
FRAME, DRAWBAR AND ROCKSHAFT ASSEMBLY

Index No.	Part No.	Description	No. Used	Weight
1	8D-383	Center Frame	1	471.13
2	8D-180	Drawbar Assembly	1	96.71
3	6D-301	Machine Bolt, 5/8-11 NC x 6-1/2" Lg., Gr. 5	2	
		Lockwasher, 5/8 Med. Spring	11	
4	1C-392	Nut, 5/8-11 NC Regular Hex	11	
5	8D-183	Channel Assembly	2	31.93
6	6D-744	Capscrew, 1/2-13 NC x 2-3/4, Grade 5	8	
7	5C-392	Locknut, 1/2-13 NC (Stover)	8	
8	6D-300	Machine Bolt, 3/4-10 NC x 6" Lg., Grade 5	1	
*	9D-509	Machine Bolt, 3/4-10 NC x 6-1/2" Lg., Gr. 5 (used on machines after June 15, 1973)	1	
9	6C-729	Locknut, 3/4-10 NC (Stover)	2	
10	6D-879	Hitch Clevis	1	8.0
11	6D-287	Machine Bolt, 1-8 NC x 6-1/2" Lg., Gr. 5	1	
12	6D-306	Locknut, 1-8 NC (Stover)	1	
13	8D-311	Cylinder Lug	1	7.6
14	6D-742	Capscrew, 3/4-10 NC x 3" Lg., Grade 5	1	
15	6D-333	Hose Holder	1	1.8
16	5C-460	Capscrew, 5/8-11 NC x 2" Lg., Grade 5	9	
		Flat Washer, 5/8 Std.	1	
17	8D-177	Rockshaft Assembly	1	93.09
18	8D-307	Bearing Assembly	4	2.55
19	8D-367	Strap	2	3.8
20	8D-366	Pin	1	
21	4C-856	Hairpin Cotter	1	
22	2C-458	Flat Washer, 3/4" S.A.E.	1	
23	4D-561	Capscrew, 5/8-11 NC x 1-1/2" Lg., Grade 5	2	
24	5C-461	Locknut, 5/8-11 NC (Stover)	2	



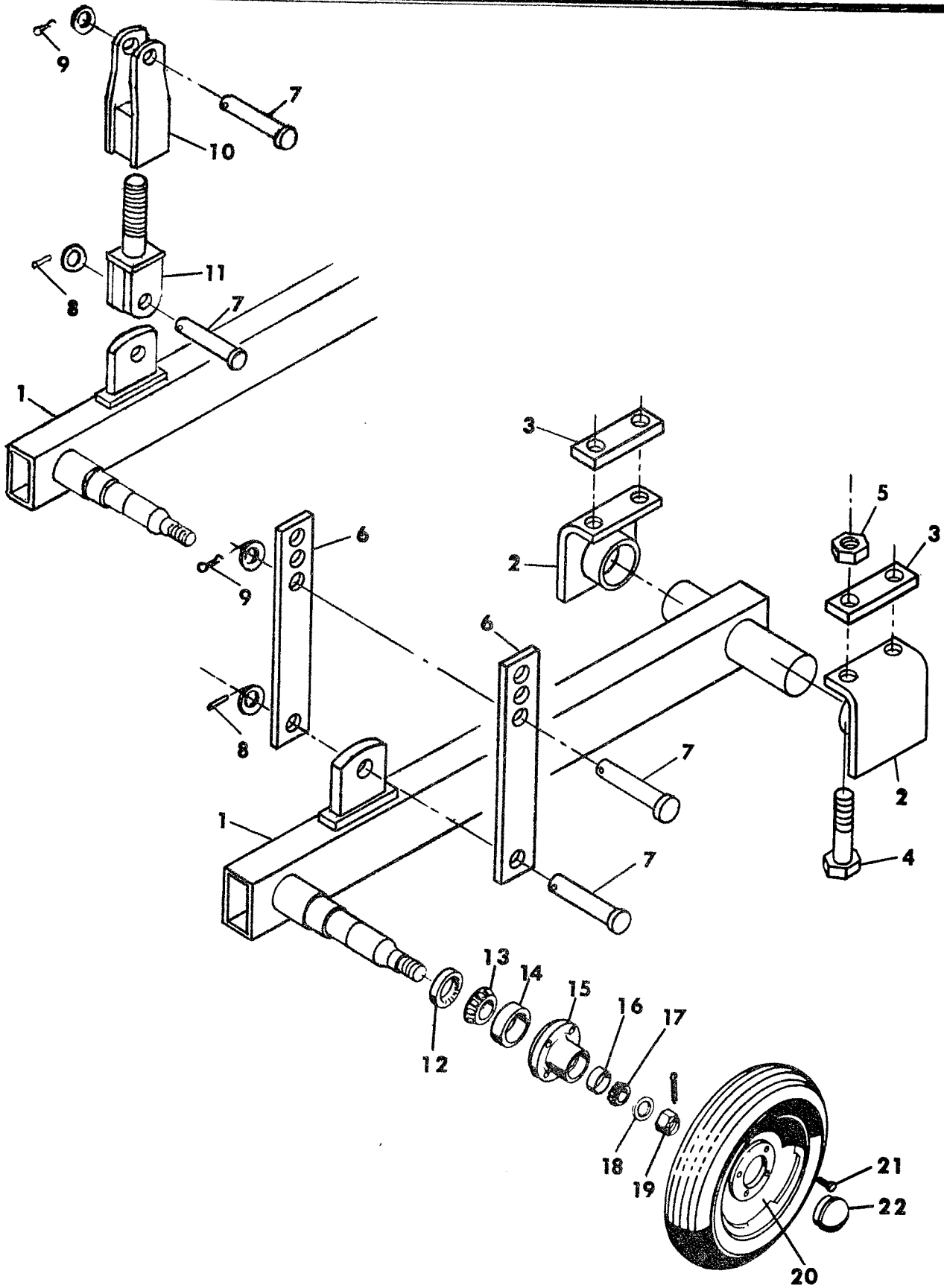
CULTIVATOR TOOTH ASSEMBLY

Index No.	Part No.	Description	No. Used	Approx. Weight
1	2J-143	Cultivator Tooth	1	6.2
2	8D-219	Extension Spring	1	4.6
3	8D-220	Spring Plug	1	1.1
4	8D-221	Spring Plug	1	.5
5	4J-582	Spring Holder	1	4.25
6	8D-349	Bolt, 1/2-13 NC x 3-1/4 Lg., Special Head	1	
7	8D-327	Strap	1	.95
8	8D-305	Strap	1	.42
9	8D-326	Carriage Bolt, 1/2-13 NC x 4 Lg., Grade 5	2	
10	5C-392	Locknut, 1/2-13 NC (Stover)	4	
11	9D-19	Bushing	1	.36
12	9C-134	Flat Washer, 1/2" SAE	2	
13	5D-871	Capscrew, 1/2-13 NC x 3-1/2 Lg., Grade 5	1	
14	8D-223	Tooth Clamp	1	6.75
15	8D-302	Pin, 1/2" Dia. x 3" Lg. Sq. Hd.	1	
16	2C-864	Cotter Pin, 1/8" Dia. x 1" Lg.	1	
17	1D-237	Capscrew, 1/2-13 NC x 2" Lg., Grade 5	1	
18	8D-337	Reversible Tooth Point (Standard)	1	1.0
19	8D-301	Plow Bolt, 7/16-14 NC x 1-1/2" Lg., #3 Head	2	
19	1C-314	Lockwasher, 7/16 Med. Spring	2	
19	1C-179	Nut, 7/16-14 NC	2	
20	2J-605	Reversible Tooth Point (Optional)	1	2.1



WING AND EXTENSION ASSEMBLIES

Index No.	Part No.	Description	Weight
1	8D-329	Stub Extension 5-1/2"	5.21
2	8D-330	Stub Extension 10"	7.31
3	8D-333	Stub Extension 17"	10.49
4	2D-474	Capscrew, 5/8-11 NC x 1-3/4 Long, Grade 5 Lockwasher, 5/8 Med. Spring Nut, 5/8-11 NC Regular Hex	
5	8D-325	Wing Assembly, Short R. H.	71.77
6	8D-324	Wing Assembly, Short L. H.	71.77
6	8D-328	Hinge Pin, 3/4" x 8" Long	1.0
7	5C-460	Cotter Pin, 1/4" x 8" Long	
8	8D-211	Capscrew, 5/8-11 NC x 2" Long, Grade 5	
8	8D-211	Wing Assembly, 3 Foot R. H.	112.25
8	8D-212	Wing Assembly, 3 Foot L. H.	112.25



AXLE ASSEMBLY

Index No.	Part No.	Description	No. Used	Weight
1	8D-179	Axle Assembly, R.H. Complete) Used on FC-1266	1	40.29
	8D-178	Axle Assembly, L.H. Complete) thru FC-2066	1	40.29
2	8D-310	Bearing	4	3.22
3	8D-312	Strap	4	.97
4	5D-335	Capscrew, 1/2-13 NC x 4 Lg., Grade 5	8	
5	5C-392	Locknut, 1/2-13 NC (Stover)	8	
6	8D-313	Strap	4	2.6
7	8D-314	Clevis Pin, 3/4" Dia. x 2-1/4" Long	4	.3
	1C-133	Flat Washer, 3/4" Std.	4	
8	7C-285	Roll Pin, 1/4" x 1-1/4" Long	2	
9	8D-519	Clinch Pin	2	
10	9D-5	Yoke	1	4.41
11	9D-7	R.H. Screw	1	2.42
12	5C-910	Seal	2	.13
13	5C-913	Bearing Cone #LM67048	2	.25
14	5C-914	Bearing Cup #LM67010	2	.7
15	5C-904	Hub (4 bolt)	2	6.25
16	5C-912	Bearing Cup #LM11910	2	.2
17	5C-911	Bearing Cone #LM11949	2	.25
18	5C-907	Washer, 5/8 SAE Flat	2	
19	5C-909	Slotted Nut	2	.2
20	7D-931	Wheel (15 inch - 4 bolt)	2	16.0
21	5C-100	Wheel Bolt	8	.2
22	5C-908	Hub Cap	2	.25
		} Obsolete- Use 2-8D-313		
		} Used on FC-1266 thru FC-2066		
1	1J-683	Axle Assembly R.H. Complete	1	40.3
	1J-682	Axle Assembly L.H. Complete	1	40.3
12	1D-273	Seal	2	.13
13	5C-480	Bearing Cone #LM48548	2	.2
14	5C-479	Bearing Cup #LM48510	2	.1
15	1J-390	Hub (5 bolt)	2	6.3
16	5C-912	Bearing Cup #LM11910	2	.2
17	5C-911	Bearing Cone #LM11949	2	.25
18		Not Used		
19	3C-173	Slotted Nut	2	.2
20	1J-684	Wheel (15 inch - 5 bolt)	2	16.0
21	5C-100	Wheel Bolt	10	.2
22	1J-463	Hub Cap	2	.25
		} Used on FC-1261 thru FC-2061 And FC-1261-1 thru FC-2061-1		