

# REPAIR PARTS CATALOG



WIDE (37-Foot through 45-Foot)  
*HFC Field Cultivator*

**MODELS: HFCT37 THROUGH HFCT45  
HFKT37 THROUGH HFKT45**



**MODEL HFCT-40**

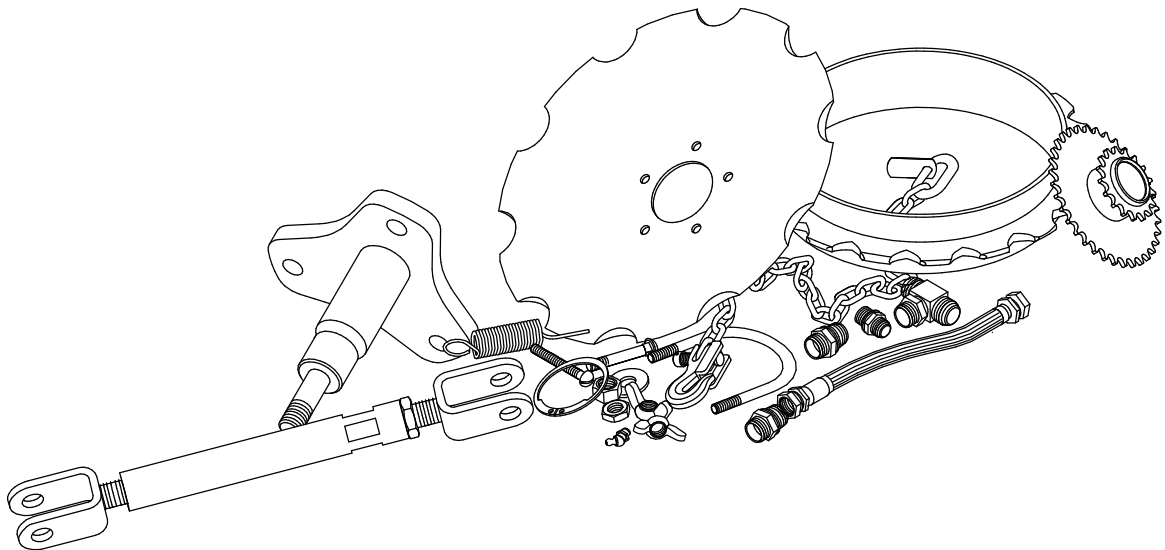
**IMPORTANT!**  
Repairs cannot be purchased  
retail direct from factory.  
Order through your Brillion dealer.

BRILLION FARM EQUIPMENT  
BRILLION, WISCONSIN 54110  
[www.brillionfarmeq.com](http://www.brillionfarmeq.com)

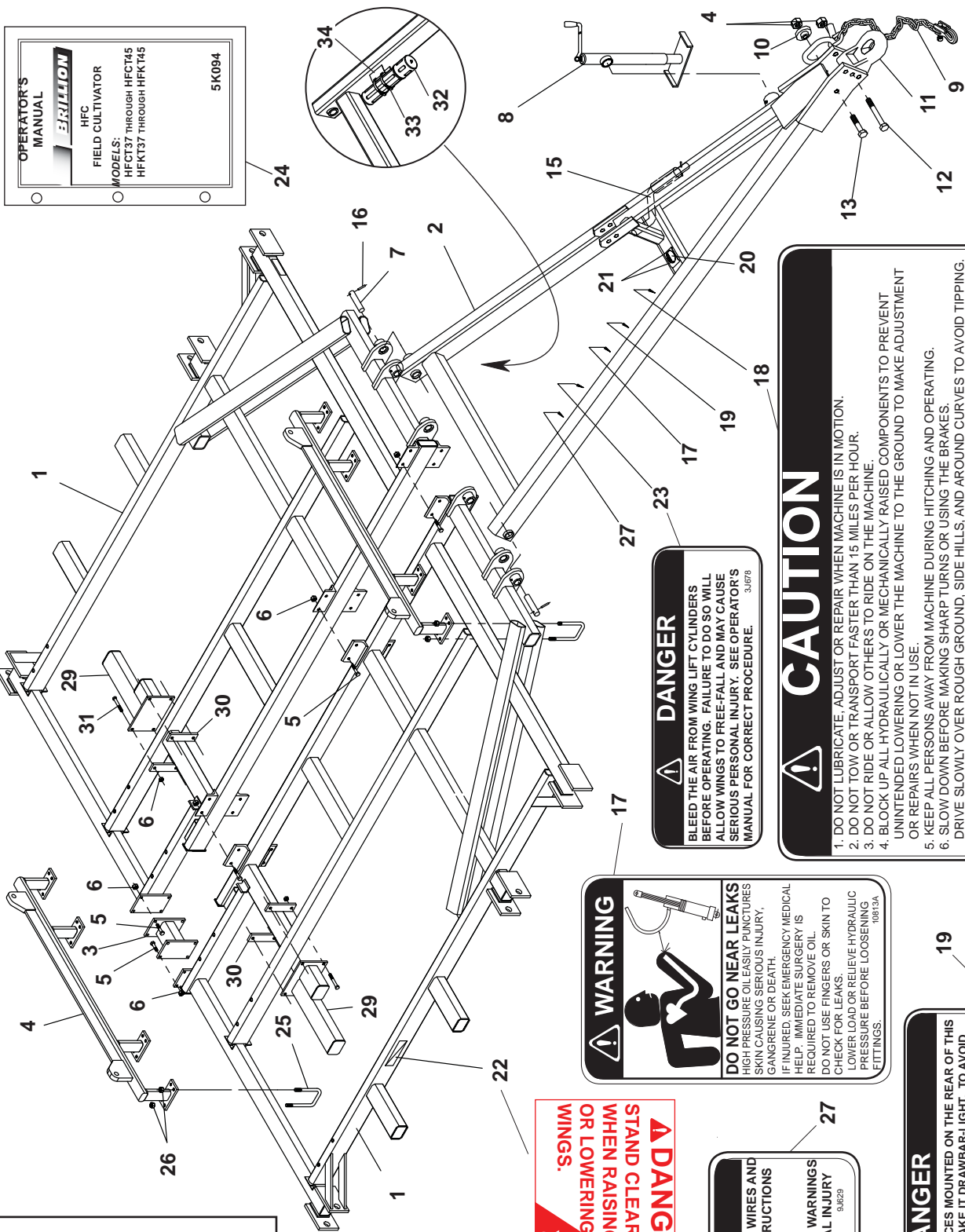
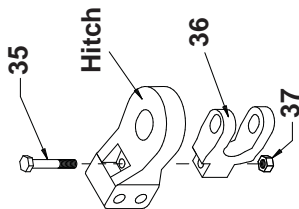


# *Contents*

Frame and Drawbar .....	2, 3
Leveling Linkage & Center Rockshaft .....	4, 5
Center Rockshaft & Components .....	6, 7
Wings & Wing Rockshafts .....	8, 9
Outer Wing & Wing Rockshaft .....	10, 11
Wing Rockshaft & Components .....	12, 13
Wing Rockshaft (Single Wheel) & Components .....	14, 15
Front Gage Wheel .....	16, 17
Shank Assembly & SMV Bracket .....	18, 19
Gage Wheel Hydraulics .....	20, 21
Wing Lift Hydraulics .....	22, 23
Rear Hitch Kit .....	24
Drag Kit Components .....	25
3-Bar Coil-Tine Harrow .....	26, 27
Hydraulic Cylinder Components .....	28-32
Index .....	33-36



Transport Only



**OPERATOR'S MANUAL**  
**ERILLION**  
 HFC  
 FIELD CULTIVATOR  
 MODELS:  
 HFCT37 THROUGH HFCT45  
 HFKT37 THROUGH HFK45  
 5K094

**⚠ DANGER**  
 STAND CLEAR  
 WHEN RAISING  
 OR LOWERING  
 WINGS.  
 6.8376

**⚠ DANGER**  
 WATCH FOR ELECTRICAL WIRES AND  
 OTHER OVERHEAD OBSTRUCTIONS  
 WHEN FOLDING WINGS.  
 FAILURE TO HEED THESE WARNINGS  
 MAY RESULT IN PERSONAL INJURY  
 OR DEATH.  
 9.6229

**⚠ DANGER**  
 HARROWS OR OTHER DEVICES MOUNTED ON THE REAR OF THIS  
 MACHINE WILL USUALLY MAKE IT DRAWBAR-LIGHT. TO AVOID  
 PERSONAL INJURY FROM MACHINE TIPPING REARWARD, ALWAYS  
 LOWER MACHINE TO GROUND BEFORE DISCONNECTING TRAC-  
 TOR. SEE OPERATOR'S MANUAL FOR DETAILS.  
 5.1333

**⚠ WARNING**  
  
**DO NOT GO NEAR LEAKS**  
 HIGH PRESSURE OIL EASILY PUNCTURES  
 SKIN CAUSING SERIOUS INJURY,  
 GANGRENE OR DEATH.  
 IF INJURED, SEEK EMERGENCY MEDICAL  
 HELP. IMMEDIATE SURGERY IS  
 REQUIRED TO REMOVE OIL.  
 DO NOT USE FINGERS OR SKIN TO  
 CHECK FOR LEAKS.  
 LOWER LOAD OR RELIEVE HYDRAULIC  
 PRESSURE BEFORE LOOSENING  
 FITTINGS.  
 10813A

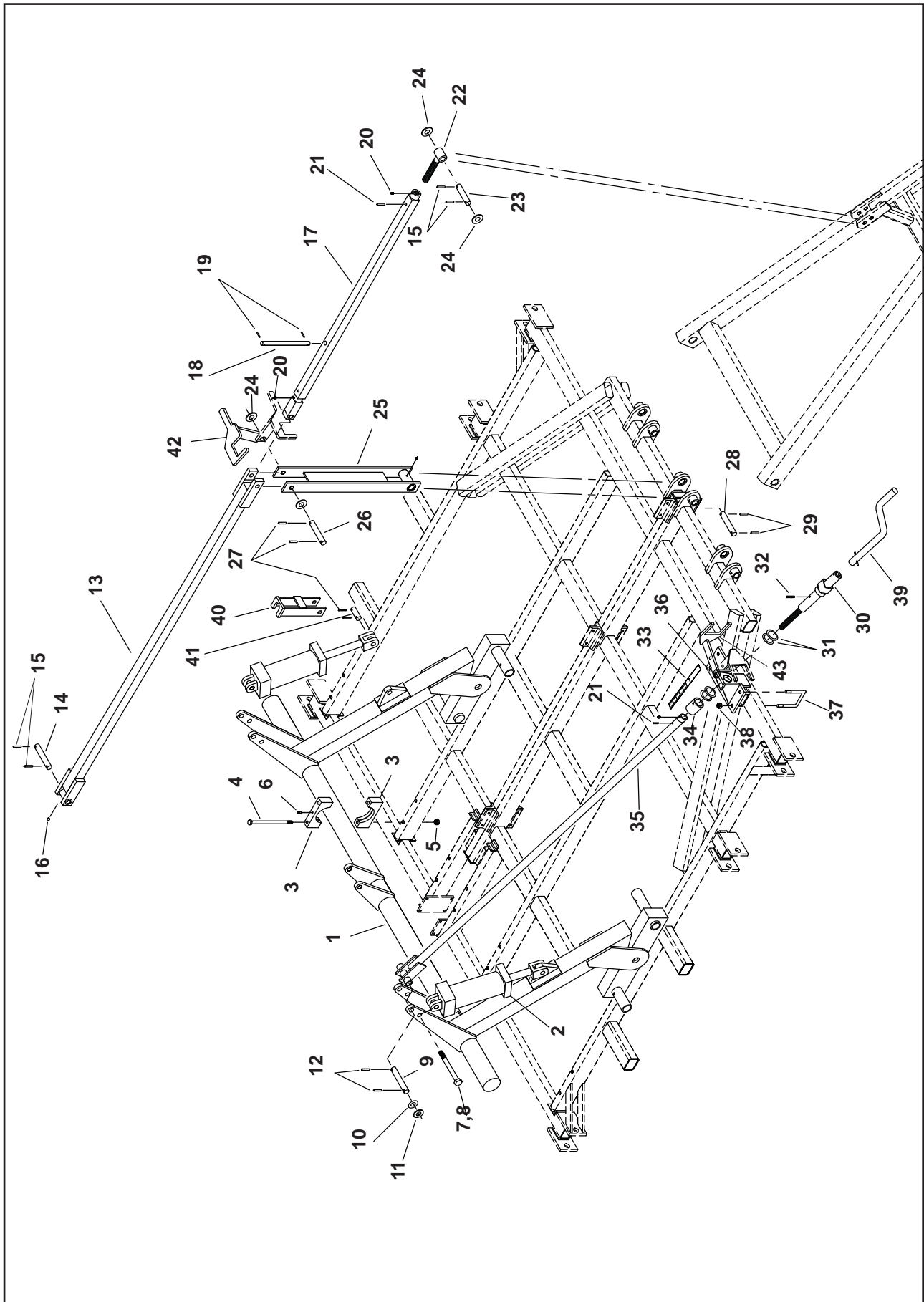
**⚠ DANGER**  
 BLEED THE AIR FROM WING LIFT CYLINDERS  
 BEFORE OPERATING. FAILURE TO DO SO WILL  
 ALLOW WINGS TO FREE-FALL AND MAY CAUSE  
 SERIOUS PERSONAL INJURY. SEE OPERATOR'S  
 MANUAL FOR CORRECT PROCEDURE.  
 3.1078

**⚠ CAUTION**

- DO NOT LUBRICATE. ADJUST OR REPAIR WHEN MACHINE IS IN MOTION.
- DO NOT TOW OR TRANSPORT FASTER THAN 15 MILES PER HOUR.
- DO NOT RIDE OR ALLOW OTHERS TO RIDE ON THE MACHINE.
- BLOCK UP ALL HYDRAULICALLY OR MECHANICALLY RAISED COMPONENTS TO PREVENT UNINTENDED LOWERING OR LOWER THE MACHINE TO THE GROUND TO MAKE ADJUSTMENT OR REPAIRS WHEN NOT IN USE.
- KEEP ALL PERSONS AWAY FROM MACHINE DURING HITTING AND OPERATING.
- SLOW DOWN BEFORE MAKING SHARP TURNS OR USING THE BRAKES.
- DRIVE SLOWLY OVER ROUGH GROUND, SIDE HILLS, AND AROUND CURVES TO AVOID TIPPING.
- COMPLY WITH ALL LAWS WHEN TRANSPORTING THE MACHINE ON PUBLIC ROADWAYS.
- INSTRUCT ALL OPERATORS IN THE SAFE OPERATION OF THE MACHINE.
- REVIEW THE OPERATOR'S MANUAL FOR CORRECT PROCEDURES.
- BLOCK IMPLEMENT TO PREVENT MOVEMENT WHEN UNHITCHED FROM TRACTOR.

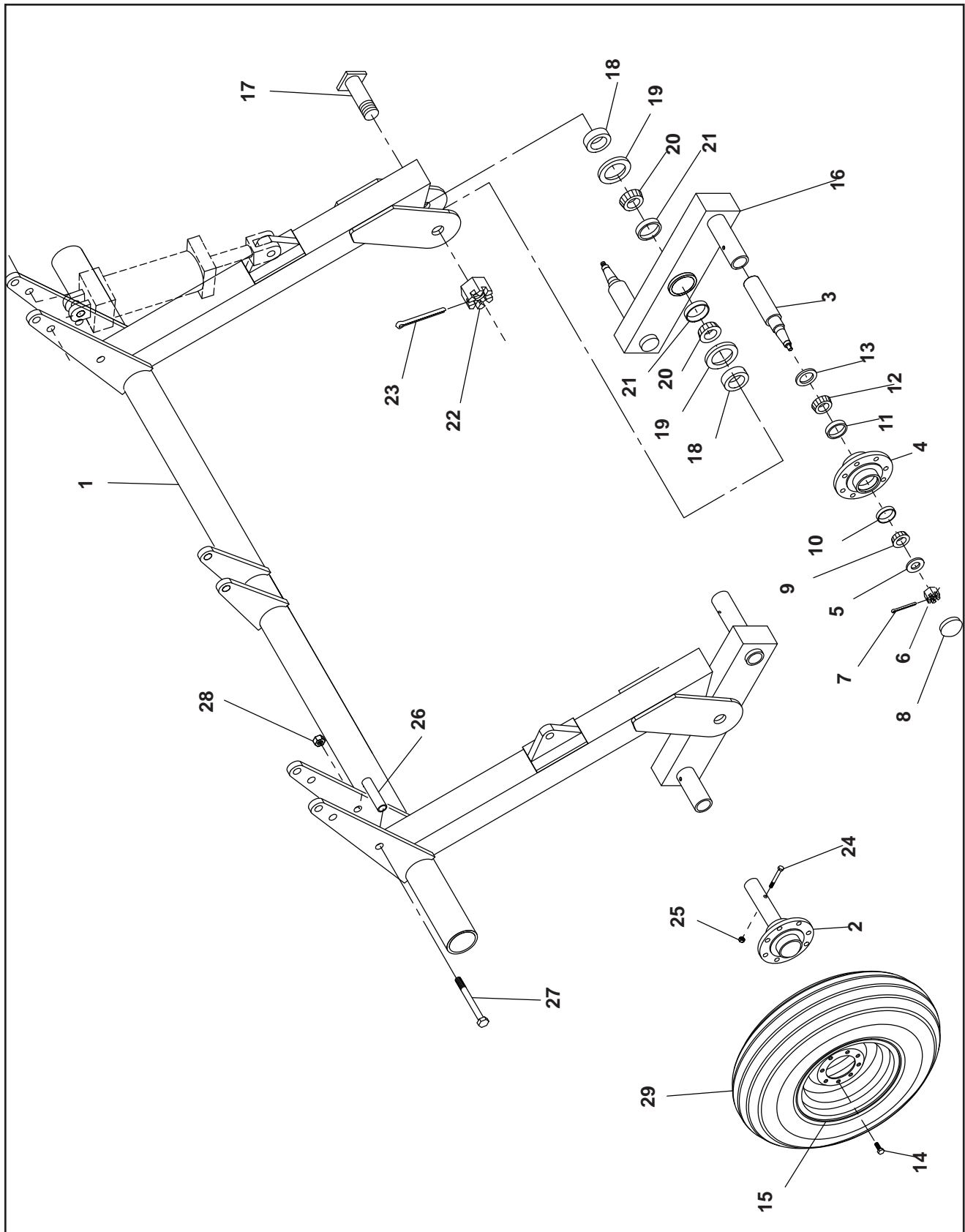
## FRAME AND DRAWBAR

Index No.	Part No.	Description	No Req'd	Weight
1	4K216	Center Frame	2	870
2	4K372	Drawbar	1	500
3	4K325	Toothbar	1	17
4	4K315	Cylinder Anchor	1	67
5	1D237	Cap Screw, 1/2 x 2	20	
6	5C392	Lock Nut, 1/2-13 Hex Stover	28	
7	4K584	Pin, 1 7/16 x 10 1/4	2	5
8	4K026	Drawbar Jack	1	24
	6K458	Replacement Pin, 9/16" with chain & screw	1	.36
9	1K732	Safety Chain	1	11
10	1K787	Spool	1	2
11	4K332	Hitch	1	30
12	4K463	Bolt, 1 x 8	2	2
13	1K788	Bolt, 1 x 3 3/4	1	1
14	6D306	Lock Nut, 1"-8 Hex Stover	3	
15	4K265	Crank	1	7
16	6D854	Roll pin, 1/2 x 2	3	
	4K819	Decal Package (incl. items 17-19 & 22,23,& 27)	1	
17	3K706	Warning Decal	1	
18	8J310	Caution Decal	1	
19	5J333	Caution Decal	1	
20	4K600	Name Plate	1	
21	3D786	Pop Rivet	2	
22	6J376	Danger Decal	2	
23	3J678	Danger Decal	2	
24	4K598	Operator's Manual	1	
25	5J914	U-bolt, 5/8"	16	
26	5C461	Lock Nut, 5/8-11 Hex Stover	32	
27	9J629	Danger Decal	1	
28	----	-----	--	--
29	4K644	Extension	2	26
30	4K645	Strap	4	2
31	1C331	Cap Screw, 1/2 x 3 1/2	8	
32	8K349	Manual Cannister	1	
33	8K350	Hose Clamp	2	
34	8K645	Cannister Bracket	1	
35	4D355	Capscrew, 3/4-10 NC x 5 1/2", gr 5	1	
36	4K661	Clevis (used for transport only)	1	
37	6C729	Lock Nut, 3/4-10 NC	1	



## LEVELING LINKAGE AND CENTER ROCKSHAFT

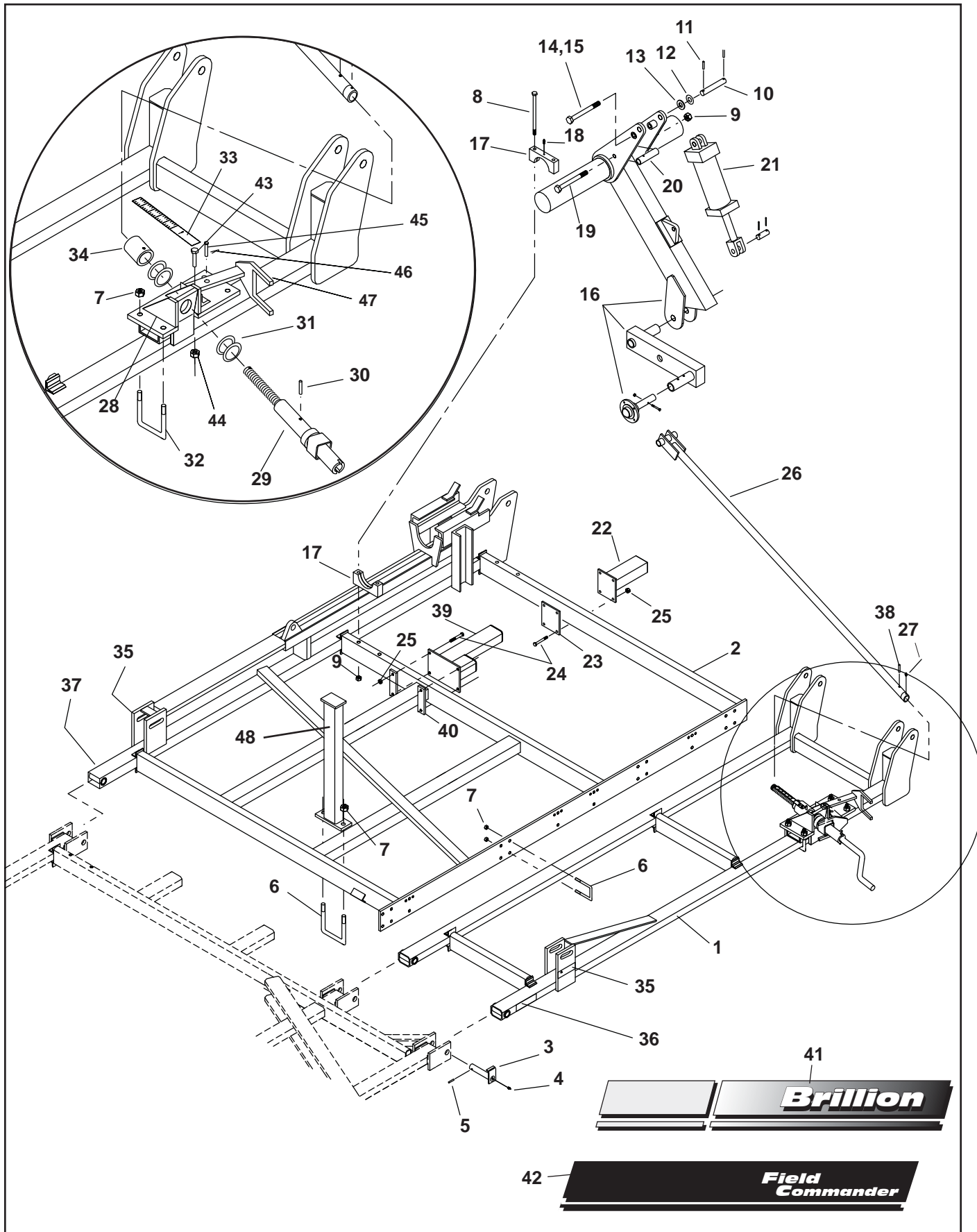
Index No.	Part No.	Description	No Req'd	Weight
1	4K243	Center Axle Assem (see page 6 for components)	1	827
2	2K093	Hydraulic cylinder 4 3/4" x 8"	2	61
3	3J598	Bearing	12	11
4	4K299	Machine Bolt, 3/4" x 14	12	2
5	6C729	Lock Nut, 3/4 - 10 Hex Stover	12	
6	9D693	Grease Fitting	6	
7	1K557	Machine Bolt, 1 x 9 1/2	2	2
8	6D306	Lock Nut, 1" - 8, Hex Stover	2	
9	4K620	Pin, 1 1/4 x 9 9/16	2	3
10	4J548	Machinery Bushing, 1 1/4 x 14 Ga	4	
11	6C406	Flat Washer, 1 1/4"	4	
12	4C858	Roll Pin, 5/16 x 2	4	
13	4K309	Brace	1	112
14	4K322	Pin, 1 3/8 x 7 1/2	1	3
15	9J206	Roll Pin, 5/16 x 2 1/2	2	
16	9D923	Grease Fitting	2	
17	4K565	Turnbuckle	1	46
18	2K912	Handle	1	3
19	1C659	Roll Pin, 1/4 x 1 1/2	2	
20	3C142	Grease Fitting	2	
21	1D604	Roll Pin, 3/16 x 1 1/2	3	
22	4K570	RH Screw Rod	1	7
23	6J580	Pin, 1 x 6 1/2	1	1
24	1C787	Flat Washer, 1"	14	
25	4K575	Link	1	47
26	4K815	Pin, 1 x 8 1/16	1	2
27	2D894	Roll Pin, 1/4 x 2	2	
28	4K584	Pin, 1 7/16 x 10 1/4	1	5
29	6D854	Roll Pin 1/2 x 2	1	
30	4K298	Adjustment Screw	2	13
31	7J142	Machinery Bushing	8	
32	4J410	Roll Pin, 3/8 x 3	2	
33	3K342	Scale	2	
	3C998	Self-tapping Screw, #8-32 x 1/2	4	
34	4K272	Sleeve	2	2
35	4K297	Depth Adjust Rod	2	51
36	4K302	Anchor RH (shown)	1	34
	4K301	Anchor LH (not shown)	1	34
37	2J095	U-bolt, 5/8	4	1
38	5C461	Lock Nut, 5/8-11, Hex Stover	8	
39	4K265	Crank	1	5
40	4K483	Transport Lock	2	9
41	5J571	Pin	2	
42	4K813	Lock, Center Linkage	1	
43	4K810	Depth Adjust Lock (See Page 9 for breakdown)	2	



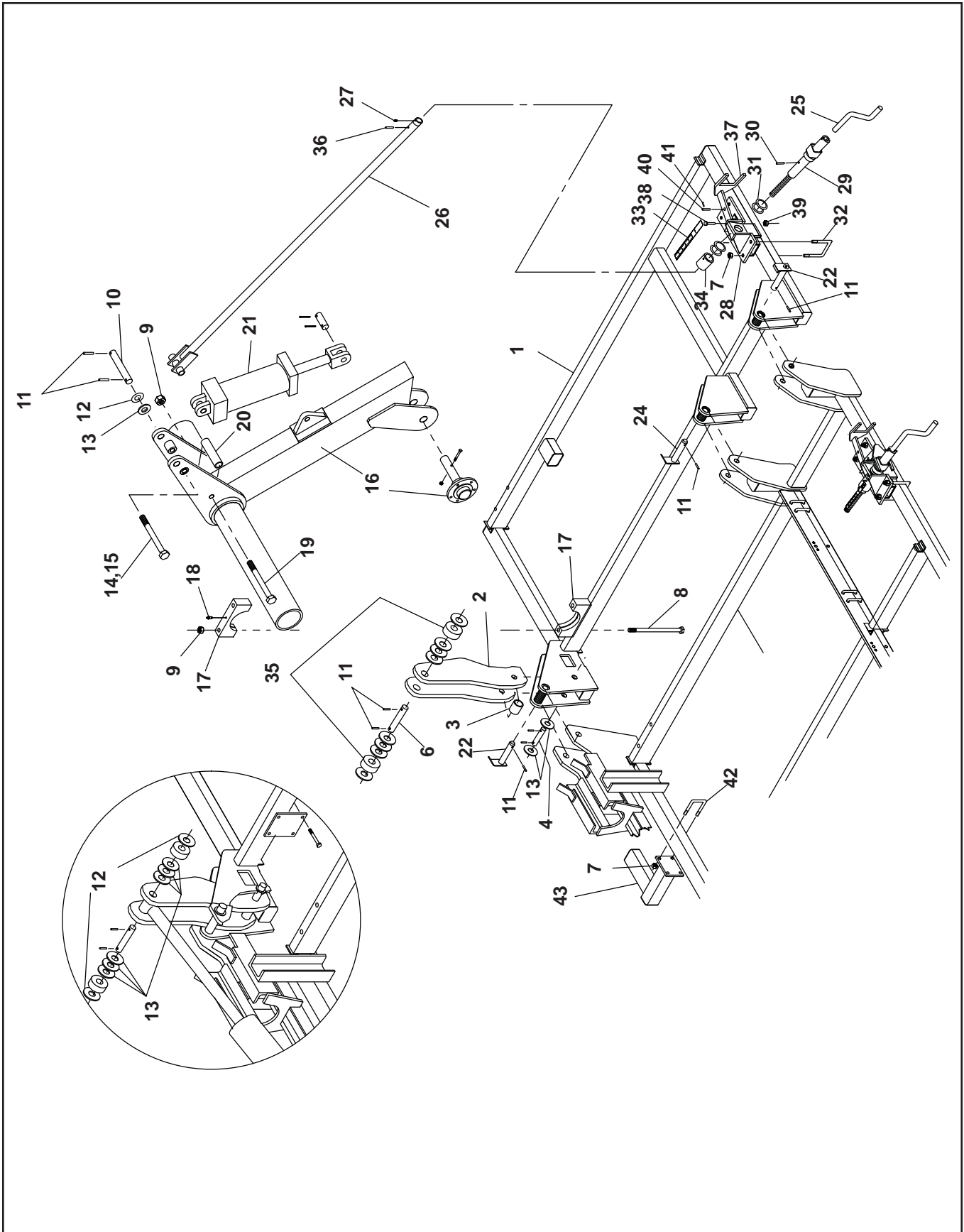


## CENTER ROCKSHAFT AND COMPONENTS

Index No.	Part No.	Description	No Req'd	Weight.
1	4K215	Center Rockshaft	1	554
2	4K208	Hub and Spindle, Complete	4	28
3	4K207	Spindle	4	16
4	3J394	Wheel Hub w/ grease zerk, 8 bolt	4	11
5	3J397	Flat Washer	4	
6	3C173	Slotted Nut	4	
7	3C350	Cotter Pin	4	
8	6D337	Hub Cap	4	
9	5C913	Bearing Cone	4	
10	5C914	Bearing Cup	4	
11	3D532	Bearing Cup	4	
12	3D531	Bearing Cone	4	
13	3J396	Seal	8	
14	3J609	Wheel Bolt, 9/16 NF	32	
15	4J699	Wheel, 15 x 10 - 8 bolt	4	
16	4K202	Beam Weldment	2	51
17	2K229	Axle Pin	2	3
18	4K206	Spacer	4	
19	4J565	Seal	4	
20	4K360	Bearing Cone	4	
21	4K359	Bearing Cup	4	
22	2J716	Slotted Nut	2	
23	6D049	Cotter Pin	2	
24	4D345	Capscrew, 1/2 x 3 3/4"	4	
25	5C392	Lock Nut, 1/2 - 13 Hex, Stover	4	
26	4K466	Sleeve	2	1
27	3J578	Machine bolt, 3/4 x 9"	2	1
28	6C729	Lock Nut, 3/4 - 10, Hex Stover	2	
29	3K498	Tire, 12.5L x 15, 10 Ply (optional)	4	46
30	4K183	Inner tube (optional)	4	

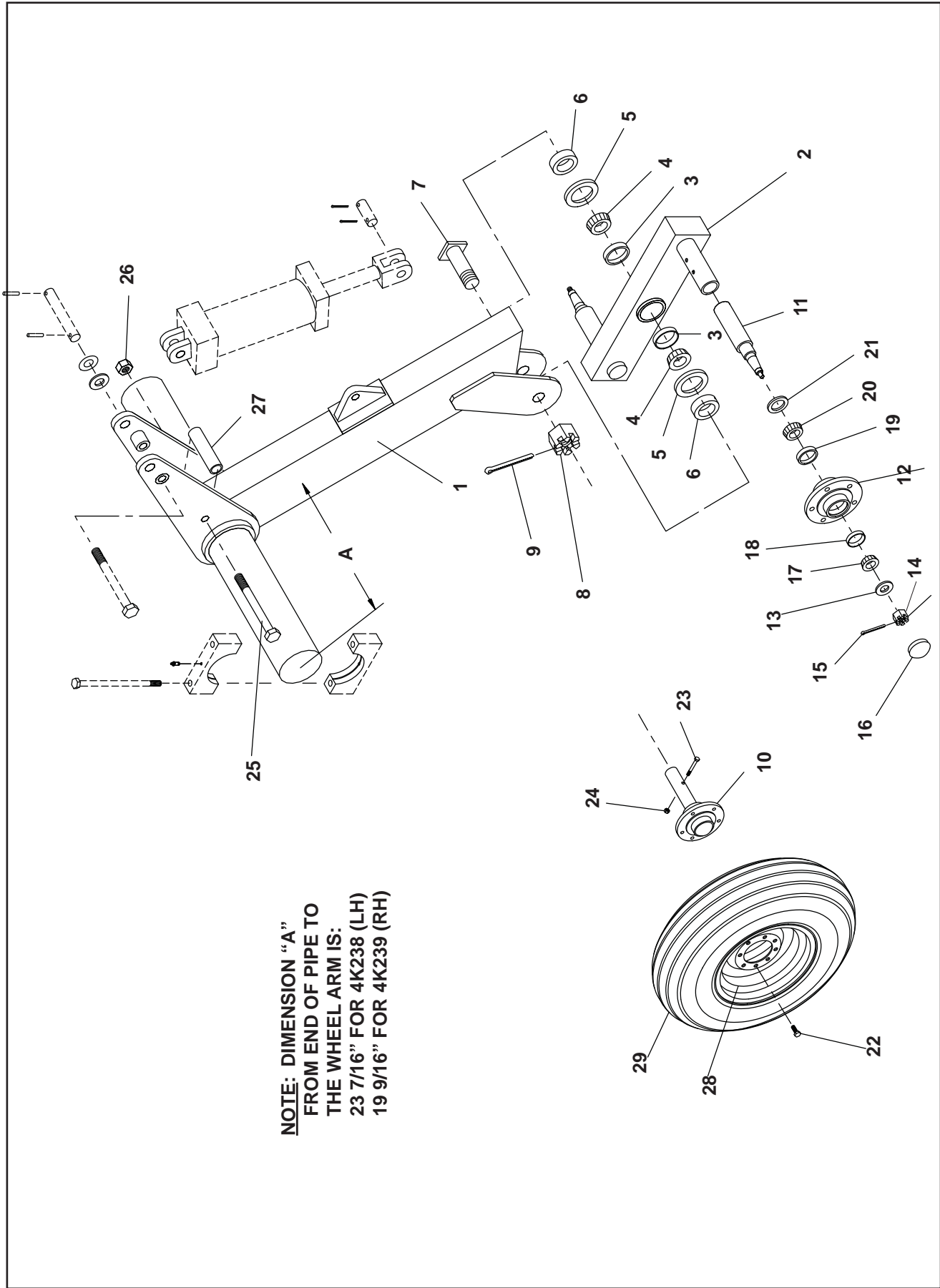


WINGS AND WING ROCKSHAFTS				
Index No.	Part No.	Description	No Req'd	Wt.
1	4K253	Wing Half, LH Front (shown)	1	380
	4K254	Wing Half, RH Front (not shown)	1	380
2	4K286	Wing Half LH Rear (shown)	1	793
	4K287	Wing Half RH Rear (not shown)	1	793
3	4K329	Hinge Pin	6	4
4	1C023	Grease Fitting	6	
5	9J206	Roll Pin, 5/16 x 2 1/2	6	
6	6J050	U-bolt, 5/8	16	1
7	5C461	Lock Nut, 5/8 - 11, Hex Stover	32	
8	4K299	Machine Bolt, 3/4 x 14	8	2
9	6C729	Lock Nut, 3/4 - 10, Hex Stover	8	
10	4K620	Pin, 1 1/4 x 9 9/16"	2	3
11	4C858	Roll Pin, 5/16 x 2	4	
12	4J548	Machinery Bushing, 1 1/4 x 14 Ga	4	
13	6C406	Flat Washer, 1 1/4	4	
14	1K557	Machine Bolt, 1 x 9 1/2	2	2
15	6D306	Lock Nut, 1" - 8, Hex Stover	2	
16	4K241	Axle Assem LH (see page 11 for components)	1	335
	4K242	Axle Assem RH (see page 11 for components)	1	335
17	3J598	Bearing	8	11
18	9D693	Grease Fitting	4	
19	3J578	Machine Bolt, 3/4 x 9	2	2
20	4K466	Sleeve	2	1
21	2K094	Hydraulic Cylinder, 4 1/2 x 8	2	61
22	4K503	Shank Mount	4	16
23	4K502	Plate	4	4
24	1C331	Capscrew, 1/2 x 3 1/2	24	
25	5C392	Lock Nut, 1/2 - 13, Hex Stover	24	
26	4K297	Depth Adjust Rod	2	51
27	9D923	Grease Fitting	2	
28	4K302	Anchor RH (shown) <b>USE ON LEFT SIDE</b>	1	34
	4K301	Anchor LH (not shown) <b>USE ON RIGHT SIDE</b>	1	34
29	4K298	Adjustment Screw	2	13
30	4J410	Roll Pin, 3/8 x 3	2	
31	7J142	Machinery Bushing, 2 x 14 Ga	8	
32	2J095	U-bolt, 5/8	4	2
33	3K342	Scale	2	
	3C998	Self-tapping Screw #8-32 x 1/2	4	
34	4K272	Sleeve	2	2
35	3J675	Danger Decal	2	
36	2J431	Reflective Decal, Amber	2	
37	2J430	Reflective Decal, Red	2	
38	1D604	Roll Pin, 3/16" x 1 1/2"	2	
39	4K644	Extension	2	26
40	4K645	Strap	4	2
41	4K036	Decal, "Brillion"	5	-
	4K037	Decal, "Brillion"	2	-
42	4K038	Decal, "Field Commander"	2	-
43	4C803	Capscrew, 3/8" x 1"	2	
44	5C954	Locknut, 3/8-16, Hex Stover	2	
45	1K936	Clevis Pin	2	
46	6J448	Hairpin	2	
47	4K810	Lock (Depth Adjust)	2	
48	4K843	Wing Stand	2	13.75



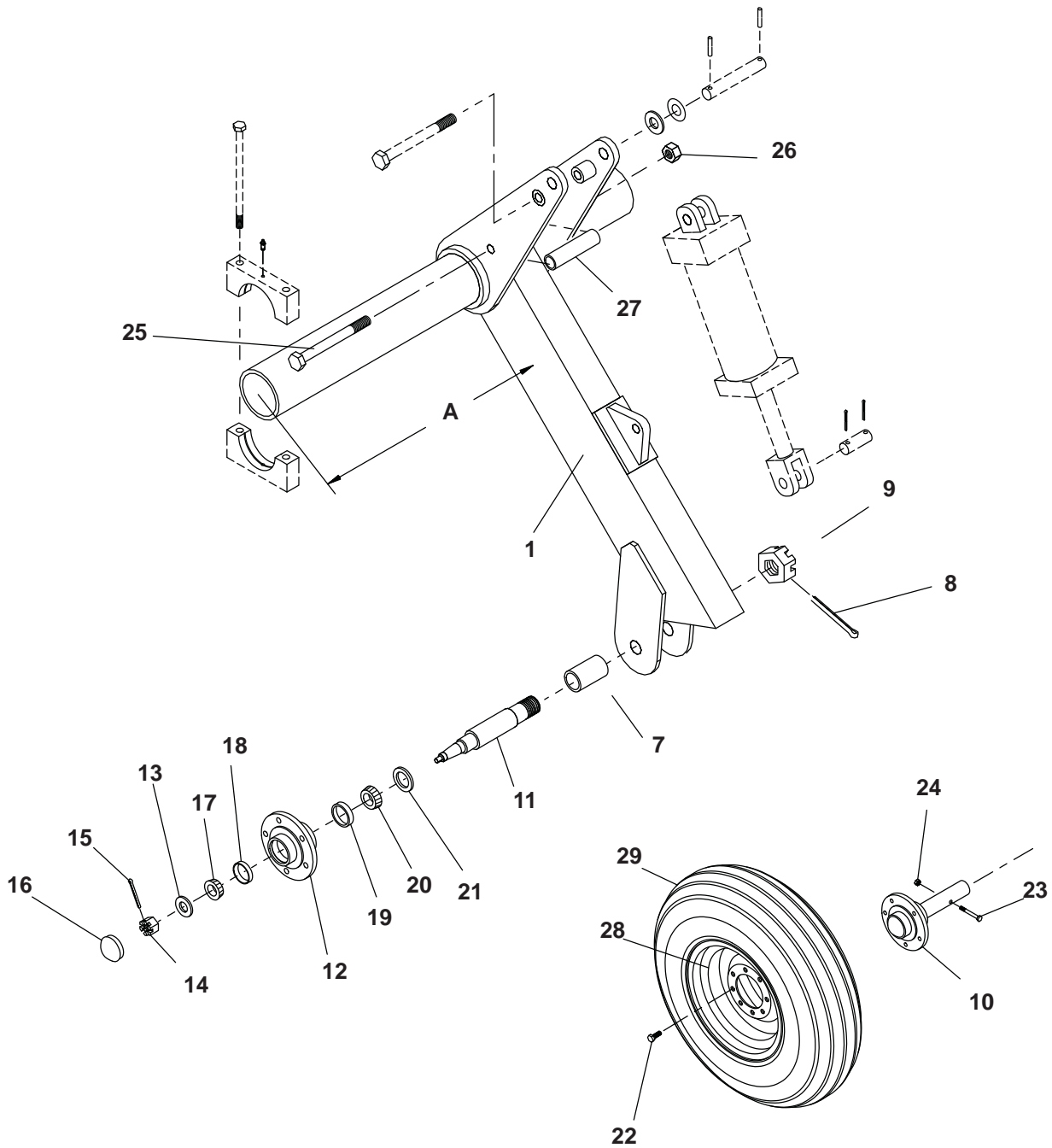
## OUTER WING AND WING ROCKSHAFT

Index No.	Part No.	Description	No Req'd	Weight.
1	4K367	Outer Wing, LH (37' - 40' Machines)	1	657
	4K368	Outer Wing, RH (37' - 40' Machines)	1	657
	4K256	Outer Wing, LH (42' - 45' Machines)	1	789
	4K257	Outer Wing, RH (42' - 45' Machines)	1	789
2	4K320	Lift Link	4	21
3	4K321	Sleeve	2	1
4	4K856	Pin, 1 1/4" x 7 1/2"	2	3
5	---	-----	--	--
6	4K857	Pin, 1 1.4" x 8"	2	1
7	5C461	Lock Nut, 5/8 - 11, Hex Stover	16	
8	4K299	Machine Bolt, 3/4 x 14	8	2
9	6C729	Lock Nut, 3/4 - 10, Hex Stover	8	--
10	4K620	Pin, 1 1/4 x 9 9/16"	2	3
11	4C858	Roll Pin, 5/16 x 2	14	--
12	4J548	Machinery Bushing, 1 1/4 x 14 Ga	6	--
13	6C406	Flat Washer, 1 1/4	18	--
14	1K557	Machine Bolt, 1 x 9 1/2	2	2
15	6D306	Lock Nut, 1" - 8, Hex Stover	2	--
16	4K470	Axle Assem LH-single wheel (see page 15 for components)	1	269
	4K471	Axle Assem RH-single wheel (see page 15 for components)	1	269
	4K241	Axle Assem LH-tandem (see page 13 for components)	1	335
	4K242	Axle Assem RH-tandem (see page 13 for components)	1	335
17	3J598	Bearing	8	11
18	9D693	Grease Fitting	4	--
19	3J578	Machine Bolt, 3/4 x 9	2	2
20	4K466	Sleeve	2	1
21	2K088	Hydraulic Cylinder, 4 x 8	2	61
22	4K326	Hinge Pin	4	3.5
23	-----	-----	--	--
24	4K906	Hinge Pin (w/ welded plate)	2	3.5
25	4K265	Crank	2	5
26	4K297	Depth Adjust Rod	2	51
27	9D923	Grease Fitting	2	--
28	4K302	Anchor RH (shown) <b>USE ON LEFT SIDE</b>	1	34
	4K301	Anchor LH (not shown) <b>USE ON RIGHT SIDE</b>	1	34
29	4K298	Adjustment Screw	2	13
30	4J410	Roll Pin, 3/8 x 3	2	--
31	7J142	Machinery Bushing, 2 x 14 Ga	8	--
32	2J095	U-bolt, 5/8	4	2
33	3K342	Scale	2	--
	3C998	Self-tapping Screw #8-32 x 1/2	4	--
34	4K272	Sleeve	2	2
35	3J510	Roller	2	
36	1D604	Roll Pin, 3/16" x 1 1/2"	2	--
37	4K810	Lock, (Depth Adjust)	2	1.8
38	4C803	Capscrew, 3/8" x 1"	2	--
39	5C954	Locknut, 3/8-16, Hex Stover	2	--
40	1K936	Clevis Pin	2	--
41	6J448	Hairpin	2	--
42	4J411	Ubolt, 5/8Thrd 3" x 4"	4	--
43	5K181	Offset Bracket [5K164] w/ Hdw.	2	25



**WING ROCKSHAFT AND COMPONENTS**

Index No.	Part No.	Description	No Req'd	Wt.
1	4K238	Wing Axle, LH	1	335
	4K239	Wing Axle, RH	1	335
2	2K220	Beam Weldment	2	39
3	1D807	Bearing Cup (LM29710)	4	
4	1D808	Bearing Cone	4	
5	6C334	Seal	4	
6	2K228	Spacer	2	
7	2K229	Axle Pin	2	3
8	2J716	Slotted Nut	2	
9	6D049	Cotter Pin, 1/4 x 2 1/2	2	
10	2K241	Hub and Spindle, Complete	4	18
11	2K242	Spindle	4	7
12	6D336	Wheel Hub, 6 Bolt	4	10
13	1C871	Flat Washer	4	
14	6D284	Slotted Nut	4	
15	1C788	Cotter Pin	4	
16	6D337	Hub Cap	4	
17	5C913	Bearing Cone	4	
18	5C914	Bearing Cup	4	
19	5C479	Bearing Cup	4	
20	5C480	Bearing Cone	4	
21	6D338	Seal	4	
22	5C100	Wheel Bolt, 1/2 NF	24	
23	6D769	Cap Screw, 3/8 x 3	4	
24	5C954	Lock Nut, 3/8 - 16, Hex Stover	4	
25	3J578	Machine Bolt, 3/4 x 9	2	1
26	6C729	Lock Nut, 3/4 - 10, Hex Stover	2	
27	4K466	Sleeve	2	1
28	6D312	Wheel, 15 x 8, 6 Bolt	4	24
29	8J795	Tire, 9.5L - 15 (optional)	4	33
30	3K395	Inner Tube (optional)	4	

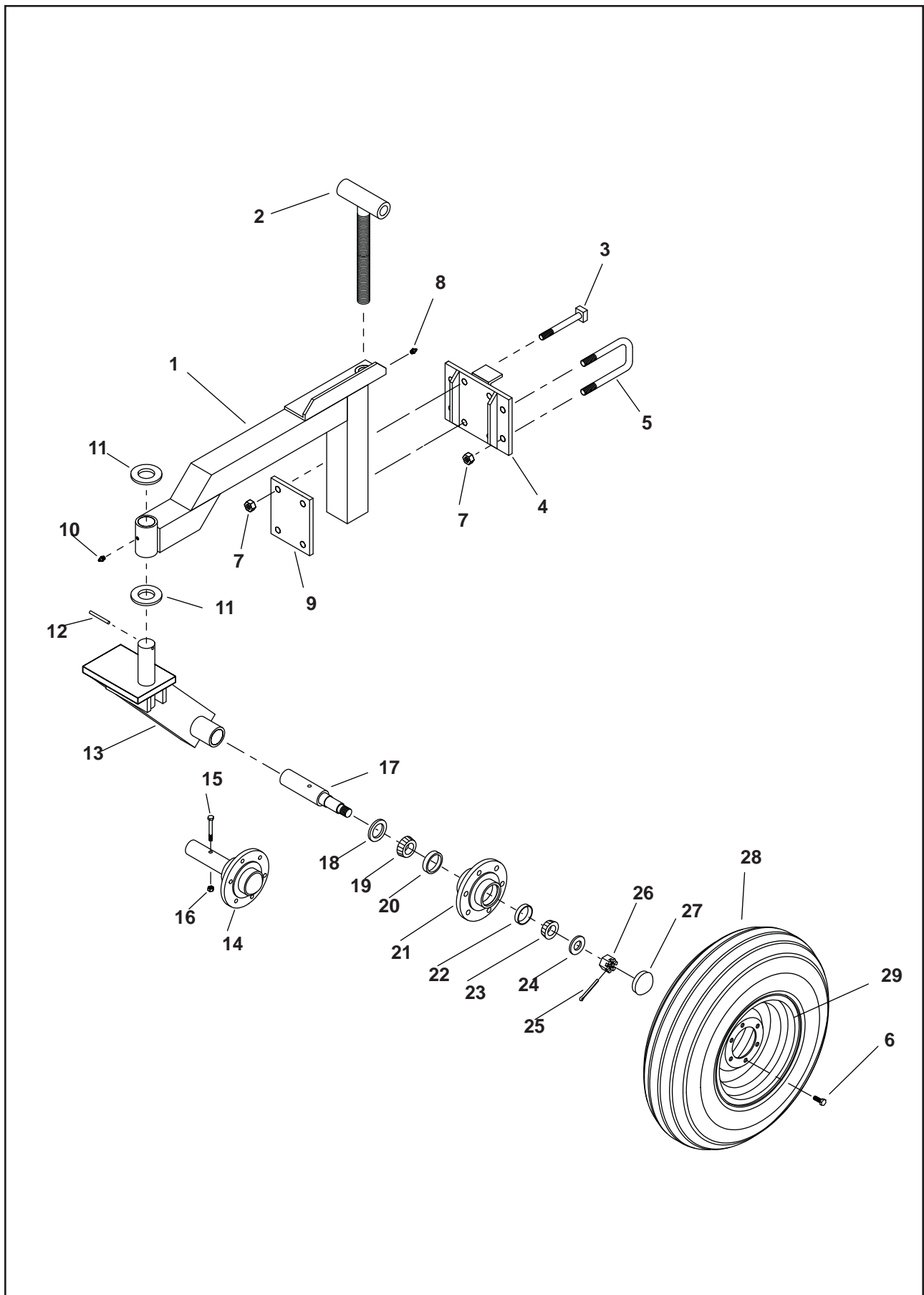


**NOTE: DIMENSION "A"**  
**FROM END OF PIPE TO**  
**THE WHEEL ARM IS:**  
**31" FOR 4K373 (LH)**  
**23 7/16" FOR 4K374 (RH)**



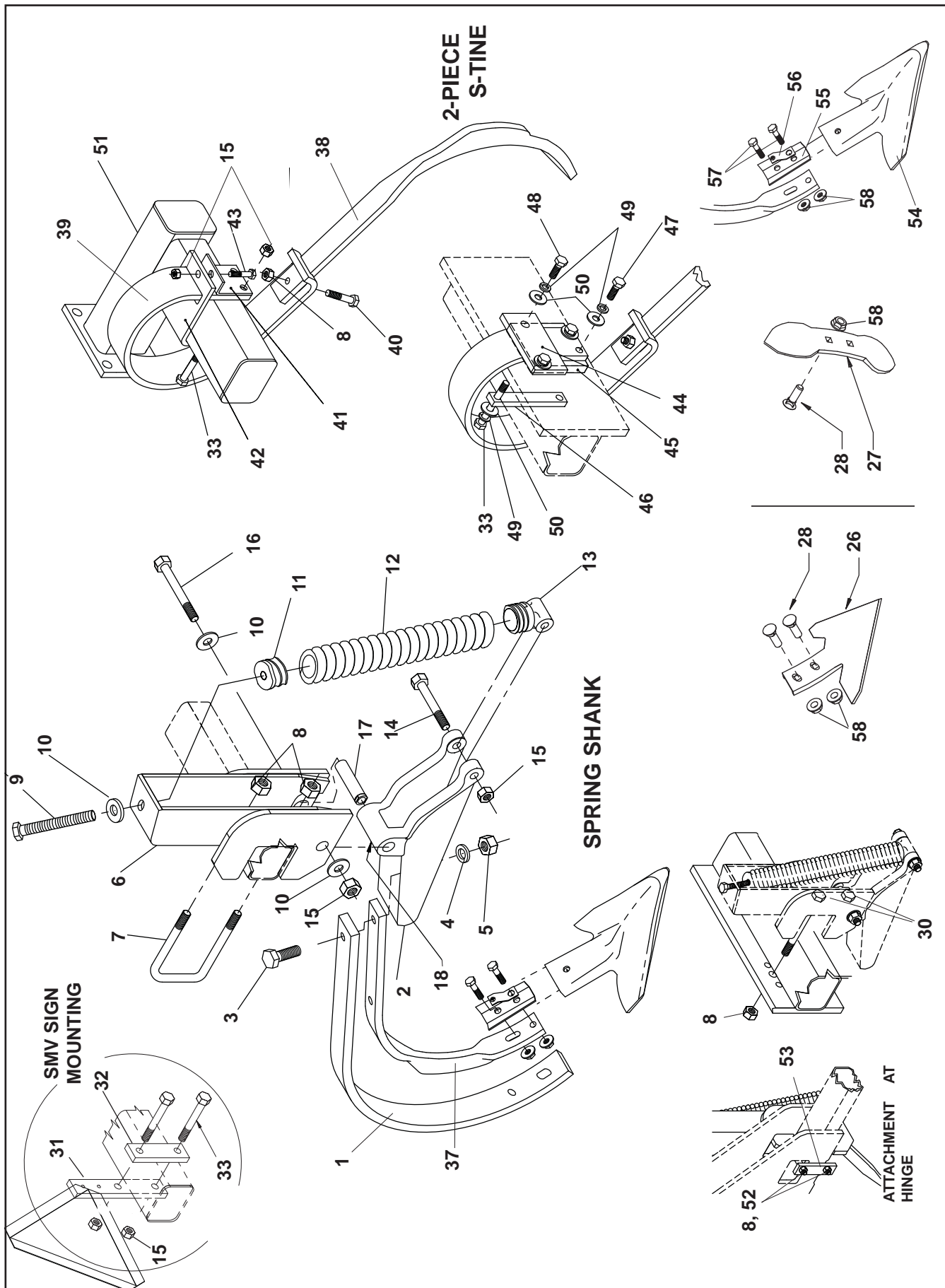
**WING ROCKSHAFT (SINGLE WHEEL) AND COMPONENTS**

Index No.	Part No.	Description	No Req'd	Weight
1	4K373	Wing Axle, LH	1	269
	4K374	Wing Axle, RH	1	269
2	---	----	--	--
3	---	----	--	--
4	---	----	--	--
5	---	----	--	--
6	---	----	--	--
7	2K737	Spacer	2	--
8	2J716	Slotted Nut	2	
9	6D049	Cotter Pin, 1/4 x 2 1/2	2	
10	2K734	Hub and Spindle, Complete	4	16
11	2K738	Spindle	4	7
12	6D336	Wheel Hub, 6 Bolt	4	10
13	1C871	Flat Washer	4	
14	6D284	Slotted Nut	4	
15	1C788	Cotter Pin	4	
16	6D337	Hub Cap	4	
17	5C913	Bearing Cone	4	
18	5C914	Bearing Cup	4	
19	5C479	Bearing Cup	4	
20	5C480	Bearing Cone	4	
21	6D338	Seal	4	
22	5C100	Wheel Bolt, 1/2 NF	24	
23	6D769	Cap Screw, 3/8 x 3	4	
24	5C954	Lock Nut, 3/8 - 16, Hex Stover	4	
25	3J578	Machine Bolt, 3/4 x 9	2	1
26	6C729	Lock Nut, 3/4 - 10, Hex Stover	2	
27	4K466	Sleeve	2	1
28	6D312	Wheel, 15 x 8, 6 Bolt	4	24
29	8J795	Tire, 9.5L - 15 (optional)	4	33
30	3K395	Inner Tube (optional)	4	



## FRONT GAGE WHEEL

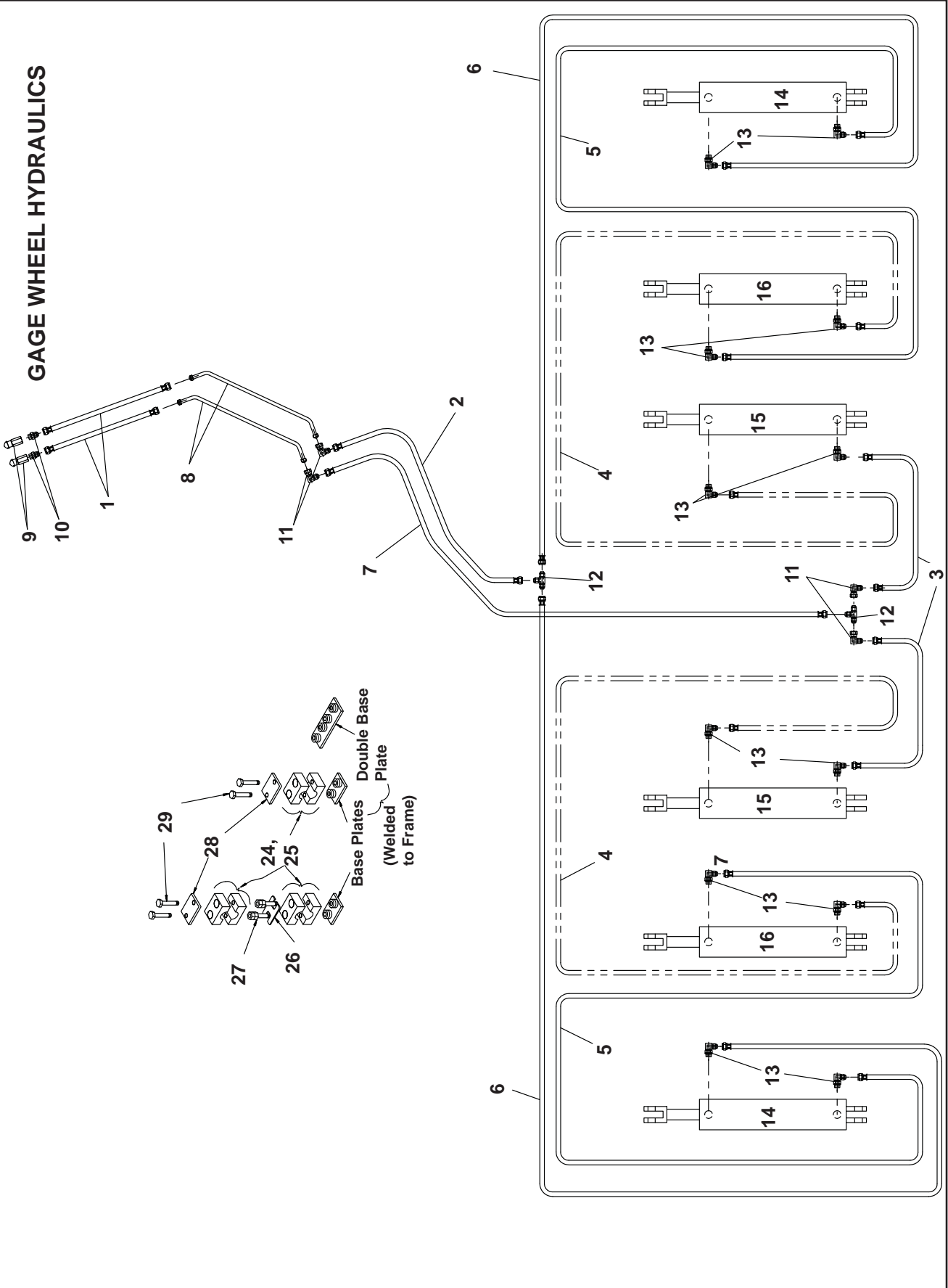
Index No.	Part No.	Description	No Req'd	Weight.
1	4K550	Gage Wheel Arm	2	42
2	4K561	Adjustment Screw	2	7
3	4K594	Sq. Head Machine Bolt, 5/8 x 5	8	
4	4K569	Plate Weldment	2	11
5	6J050	U-bolt	4	2
6	5C100	Wheel Bolt	12	
7	5C461	Lock Nut, 5/8 - 11, Hex Stover	16	
8	9D923	Grease Fitting	2	
9	4K595	Plate	2	6
10	7C414	Lube fitting	2	
11	7J142	Machinery Bushing, 3"O.D. x 2" I.D. x 14ga.	4	
12	4J410	Roll Pin, 3/8 x 3	2	
13	4K554	Wheel Arm	2	34
14	4K559	Hub and Spindle Assembly	2	17
15	6D769	Cap Screw, 3/8 x 3	2	
16	5C954	Lock Nut, 3/8 - 16, Hex Stover	2	
17	4K560	Spindle	2	6
18	6D338	Seal	2	
19	5C480	Bearing Cone	2	
20	5C479	Bearing Cup	2	
21	6D336	Wheel Hub	2	10
22	5C914	Bearing Cup	2	
23	5C913	Bearing Cone	2	
24	1C871	Flat Washer, 1"	2	
25	1C788	Cotter Pin	2	
26	6D284	Slotted Nut	2	
27	6D337	Hub Cap	2	
28	8J794	Tire, 7.60 x 15 - 6 Ply (optional)	2	27
29	6D311	Wheel	2	32
30	3K394	Inner Tube (optional)	2	



## SHANK ASSEMBLY & SMV Bracket

Index No.	Part No.	Description	Qty
	4K816	Spring Shank Assembly, Complete (edge-bent shank)	
	4K165	Spring Shank Assembly, Complete	
1	1K240	Shank	1
2	4K817	Shank Holder (use w/ item #37, 5/8" thk edge-bent shank)	1
3	1-654-010059-04	Cap Screw 5/8 x 1 3/4	1
4	1-861-010034-15	Lock Washer, 5/8	1
5	1-512-010007-11	Nut, 5/8 - 11, Hex	1
6	4K168	Spring Holder	1
7	4J411	U-bolt, 5/8	1
8	1-512-010005-13	Lock Nut, 5/8 - 11, Hex Stover	3
9	116716	Cap Screw, 1/2 x 4 Full Thread	1
10	5J492	Washer, 1/2 x 3/16" thick	3
11	8D221	Spring Plug	1
12	1K236	Spring	1
13	8D220	Spring Plug	1
14	1-654-010055-13	Cap Screw, 1/2 x 4	1
15	1-512-010005-09	Lock Nut, 1/2 - 13, Hex Stover	5
16	1-654-010055-15	Cap Screw, 1/2 x 5	1
17	7K530	Bushing	1
18	1C023	Grease fitting	1
--	---	----	--
26	4K442	9" <b>ULTRA-WING</b> Sweep (includes hardware)	1
	4J804	9" standard Sweep (includes hardware)	
27	4J801	Heavy Duty Cultivator Point (includes hardware)	1
28	8D301	Plow Bolt, 7/16 x 1 1/2 #3 Head	2
--	---	----	--
30	6D355	Bolt, 5/8 x 6 Gr 5	2
31	2K306	SMV Strap (SMV sign not incl.-shown for ref)	1
32	5J358	Strap	1
33	1C675	Bolt, 1/2 x 6, Gr 5	5
34	2K305	Plate	2
35	5C124	Bolt, 1/2 x 7 Gr 5	2
36	9C059	Bolt, 5/8 x 7, Gr 5	1
37	4K497	Shank Leaf (5/8" thick, edge-bent)	1
38	4K497	Shank Leaf (for 2-piece S-Tine)	1
39	4K484	Ring (for 2-piece S-Tine)	1
40	5C460	Capscrew, 5/8" x 2 " Gr. 5	1
41	4K637	Clip	1
42	4K638	Clamp	1
43	1D237	Capscrew, 1/2" x 2" Gr. 5	1
44	3K935	Strap	1
45	5K175	Plate	1
46	5K179	Strap	1
47	8C527	Capscrew, 1/2" x 1 1/2" Gr. 5	2
48	5D051	Capscrew, 1/2" x 1 3/4" Gr. 5	2
49	1C109	Lockwasher, 1/2" Med.	6
50	1C120	Flat Washer, 1/2" std.	6
51	5K164	Offset Bracket (See Page 10 for hdw.)	1
52	9C059	5/8" x 7"	2
53	4J412	Strap	1
-	6K262	Quick-Change Bracket Assembly (items 55-58)	1
54	6K265	7" Quick-Change Ultra Wing Point	1
55	6K263	Bracket	1
56	6K264	Spring Clip	1
57	4J916	Capscrew, 7-/16-14 NC x 1 1/2" gr. 5	2
58	4K551	Self-Locking Flange Nut, 7/16-14 NC	1

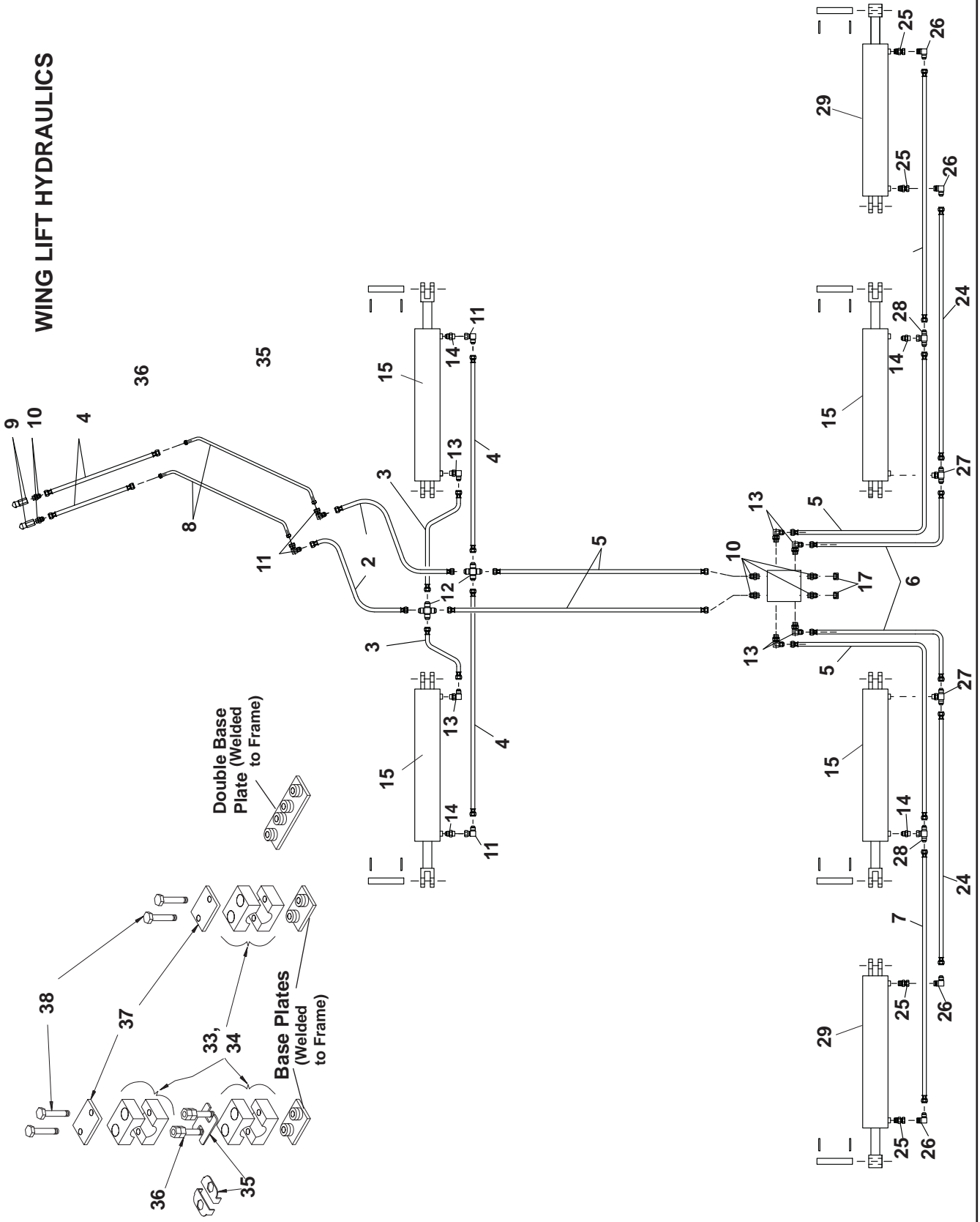
# GAGE WHEEL HYDRAULICS



## GAGE WHEEL HYDRAULICS

Index No.	Part No.	Description	No Req'd	Weight
1	4K885	Hose, 63" w/ 37° Female ends	2	
2	4K890	Hose, 120" w/ 37° Female ends	1	
3	4K886	Hose, 80" w/ 37° Female ends	2	
4	4K891	Hose, 430" w/ 37° Female ends	2	
5	4K896	Hose, 300" w/ 37° Female ends [37'-40' Machine]	2	
	4K893	Hose, 328" w/ 37° Female ends [42'-45' Machine]	2	
6	4K897	Hose, 365" w/ 37° Female ends [37'-40' Machine]	2	
	4K894	Hose, 394" w/ 37° Female ends [42'-45' Machine]	2	
7	4K884	Hose, 60" w/ 37° Female ends	1	
8	4K805	Rigid Tube	2	
9	4K912	Male Tractor Tip	2	
10	4K602	Str. Adaptor (O-Ring & Flare)	2	
11	4K608	90° Adaptor (Flare)	4	
12	4K878	Tee	2	
13	4K603	90o Adaptor (O-Ring & Flare)	12	
14	2K088	Hydraulic Cylinder, 4 x 8	2	61
15	2K093	Hydraulic Cylinder, 4 3/4 x 8	2	61
16	2K094	Hydraulic Cylinder, 4 1/2 x 8	2	61
		<i>See Instruction Sheet #5K171 for Items 17-23</i>		
17	9D674	Cable Tie	6	
18	4K874	Hose Bracket	4	
19	4K875	Hose Bracket	4	
20	3J614	Hose Clamp	16	
21	1C361	Capscrew, 5/16" x 1"	10	
22	1C362	Lockwasher	10	
23	1C385	Nut, 5/15-18 Hex	10	
24	4K899	Clamp Pair, .50 Dia. (For Rigid Tube)	12	
25	4K900	Clamp Pair, .67 Dia.	37	
26	4K901	Safety Plate, (May be either configuration)	18	
27	4K902	Stacking Bolt	36	
28	4K903	Top Plate	31	
29	1K204	Capscrew, 1/4 x 1 1/2" Hex Hd	62	

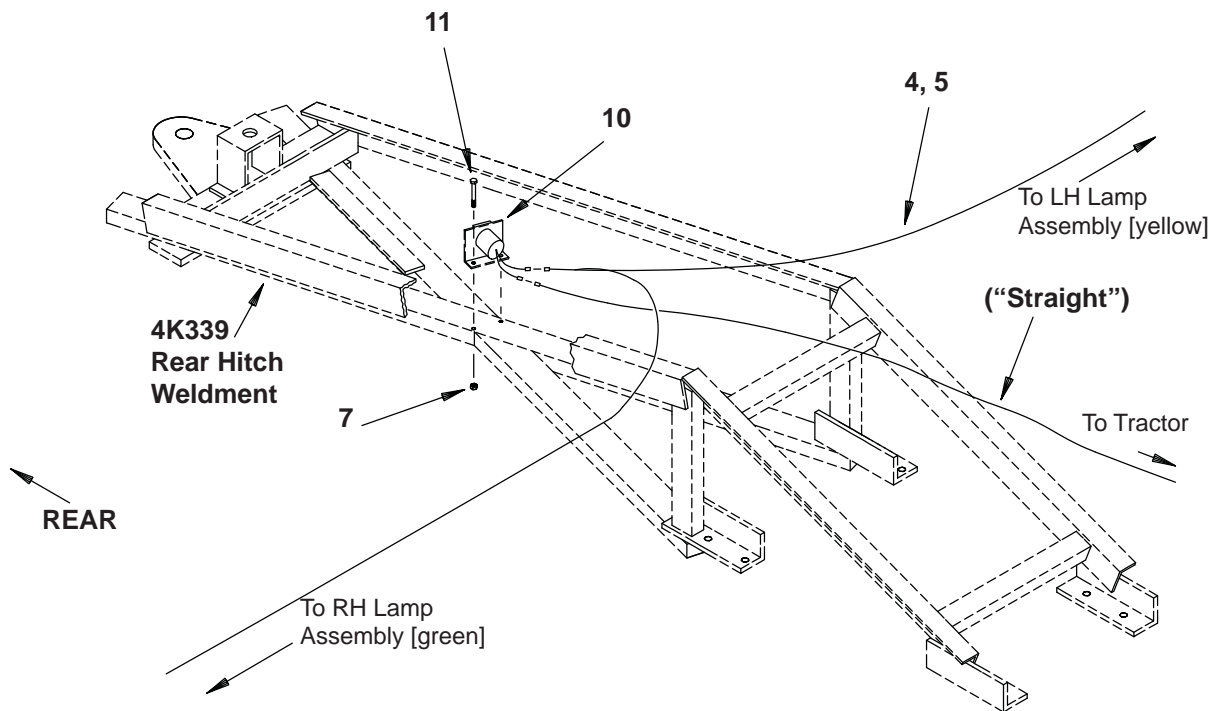
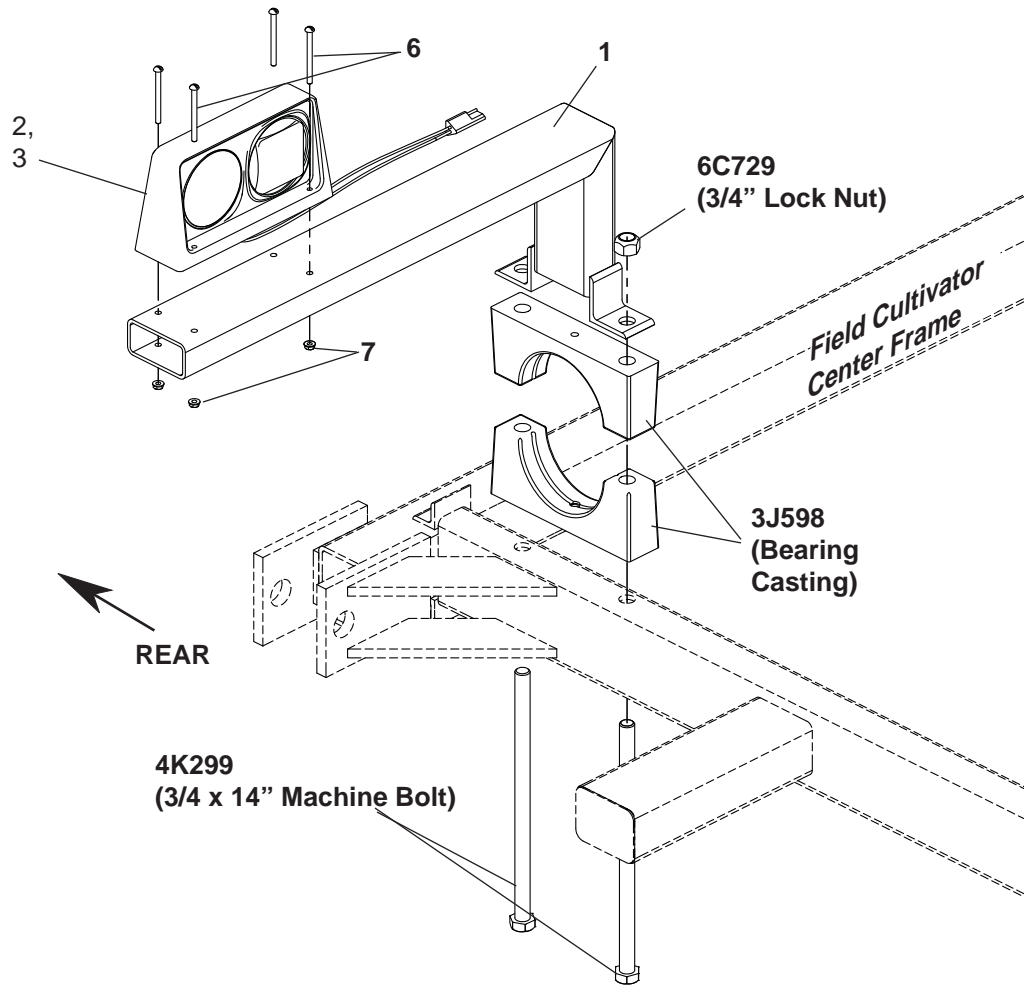
# WING LIFT HYDRAULICS



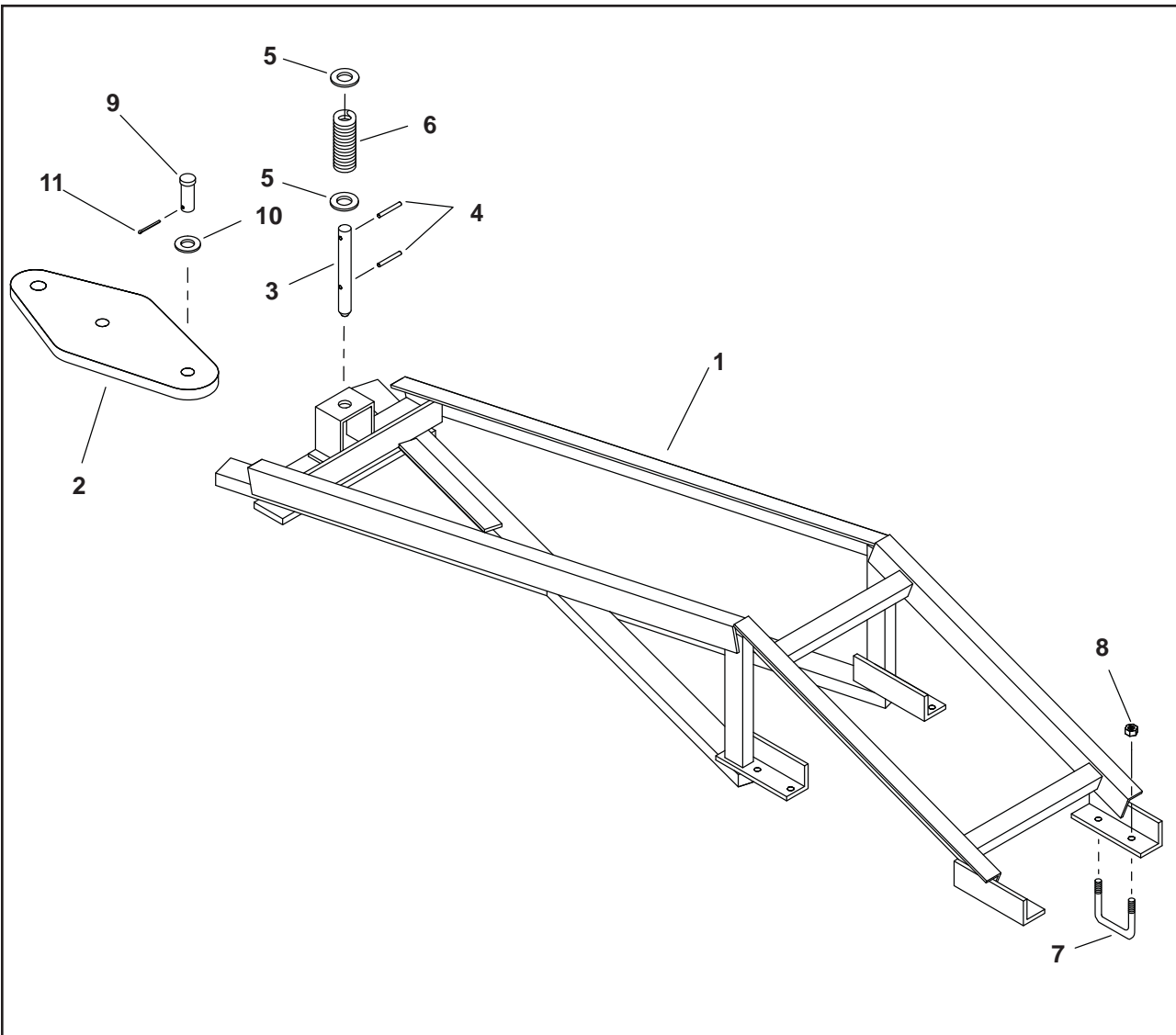


## WING LIFT HYDRAULICS

Index No.	Part No.	Description	No Req'd	Weight.
1	-----	-----		
2	4K882	Hose, 34" w/ 37° Female ends	2	
3	4K881	Hose, 29" w/ 37° Female ends	2	
4	4K885	Hose, 63" w/ 37° Female ends	2	
5	4K887	Hose, 85" w/ 37° Female ends	4	
6	4K883	Hose, 53" w/ 37° Female ends	2	
7	4K888	Hose, 105" w/ 37° Female ends	2	
8	4K805	Rigid Tube	2	
9	4K912	Male Tractor Tip	2	
10	4K602	Str. Adaptor (O-Ring & Flare)	6	
11	4K608	90° Adaptor (Flare & Flare)	6	
12	4K604	Cross (Flare)	2	
13	4K603	90° Adaptor (O-Ring & Flare)	8	
14	4K607	Restrictor (O-Ring & Flare)	4	
15	5J830	Hydraulic Cylinder, 4" x 30"	4	
	9J695	Cylinder Pin	4	
	1C871	Washer, 1"	8	
	4C858	Roll Pin, 5/16" x 2 "	8	
16	4K806	Manifold	1	
17	4K606	Cap (37°)	2	
*18	4K873	Angle	1	
*19	3D925	Capscrew	2	
*20	5C954	Locknut	2	
*21	4K875	Bracket	4	
*22	3J614	Hose Clamp	4	
*23	9D674	Cable Tie	8	
24	4K889	Hose, 114" w/ 37° Female ends	2	
25	6D716	Restrictor (Pipe Thread)	4	
26	4K860	Adaptor (90° Pipe & 37° Flare)	4	
27	4K861	Tee	2	
28	4K862	Tee	2	
29	3J568	Hydraulic Cylinder, 4" x 24"	2	
	4K857	Pin, 1 1/4" x 7 1/2"	2	
	4J548	Machinery Bushing, 1 1/4"	4	
	3J510	Roller	4	
	6C406	Washer, 1 1/4"	16	
	9J206	Roll Pin 5/16" x 2 1/2"	4	
30	1C361	Capscrew, 5/16" x 1"*	2	
31	1C362	Lockwasher*	2	
32	1C385	Nut, 5/16-18 Hex*	2	
33	4K899	Clamp Pair, .50 Dia. (For Rigid Tube)	12	
34	4K900	Clamp Pair, .67 Dia.	37	
35	4K901	Safety Plate (May be either configuration)	18	
36	4K902	Stacking Bolt	36	
37	4K903	Top Plate	31	
38	1K204	Capscrew, 1/4 x 1 1/2" Hex Hd	62	
*Not shown-see Instruction Sheet #5K172				

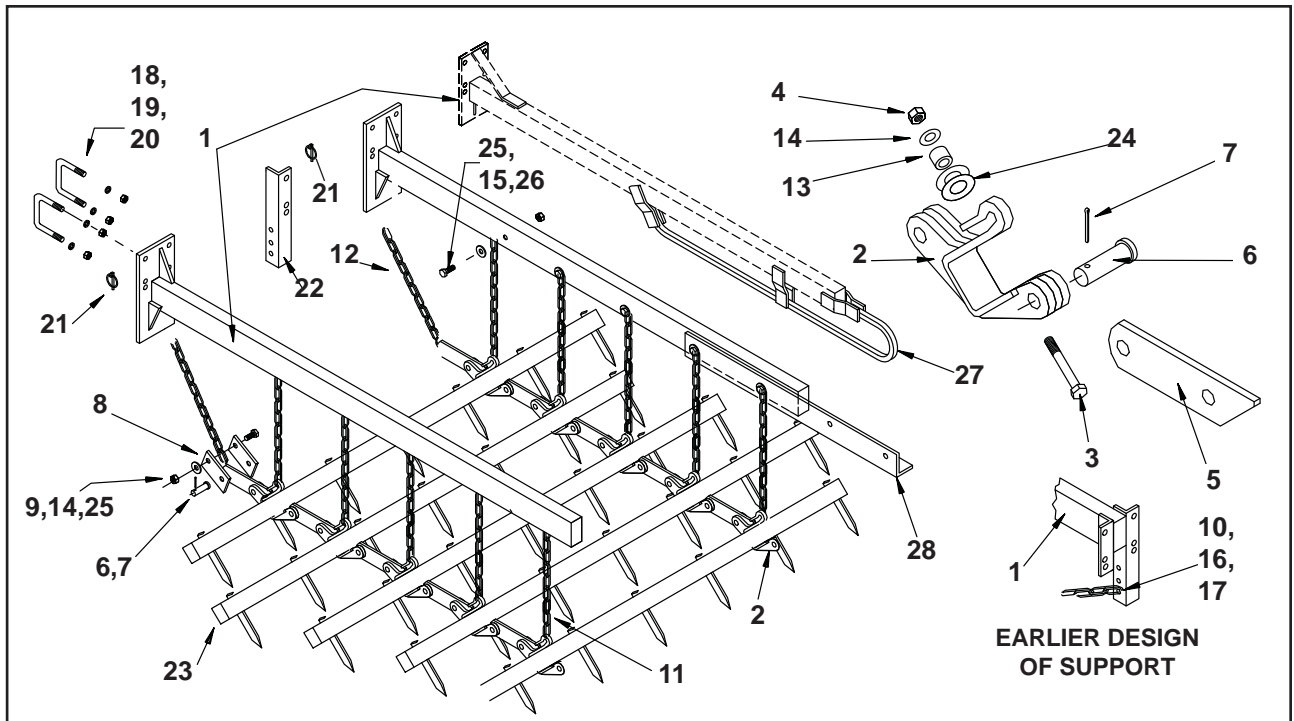


<b>#4K820 WARNING LIGHT KIT</b>			
<b>REF No.</b>	<b>PART NO.</b>	<b>PART NAME</b>	<b>QTY.</b>
1	8K383	BRACKET WELDMENT	2
2	4K772	DUAL LAMP, L.H.	1
3	4K773	DUAL LAMP, R.H.	1
4	4K828	WISHBONE HARNESS, 15'	1
5	4K829	WISHBONE HARNESS, 35'	1
6	4K751	MACHINE SCREW, 1/4" x 3"	4
7	6J150	FLANGE LOCK NUT, 1/4"	8
8	9D674	PLASTIC CABLE TIE, 8 1/2"	10
9	9D851	PLACTIC CABLE TIE, 20"	4
10	4K826	TANDEM HAUL ADAPTER	1
11	2K501	CAPSCREW, 1/4" x 2 1/2"	4
12	4K827	INSTRUCTION SHEET	1



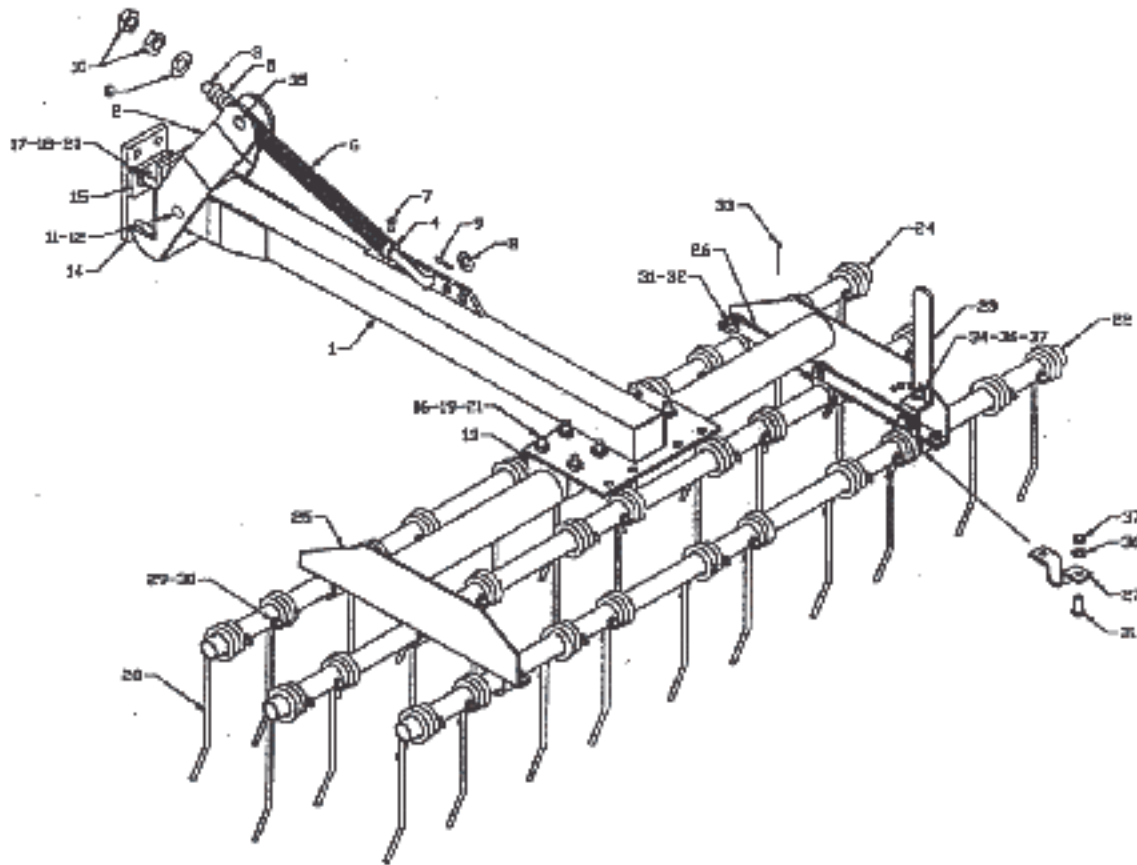
### REAR HITCH KIT

Index No.	Part No.	Description	No. Req'd	Weight.
1	4K339	Rear Hitch Weldment	1	260
2	4K354	Rear Hitch Plate	1	77
3	4K563	Pin	1	4
4	4J410	Roll Pin, 3/8 x 3	2	
5	6C406	Flat Washer, 1 1/4	2	
6	4K564	Compression Spring	1	
7	5J914	U-bolt	4	1
8	5C461	Lock Nut, 5/8 - 11, Hex Stover	8	
9	4D983	Clevis Pin	1	1
10	1C787	Flat Washer, 1"	1	
11	4C446	Cotter Pin, 1/4 x 1 1/2	1	

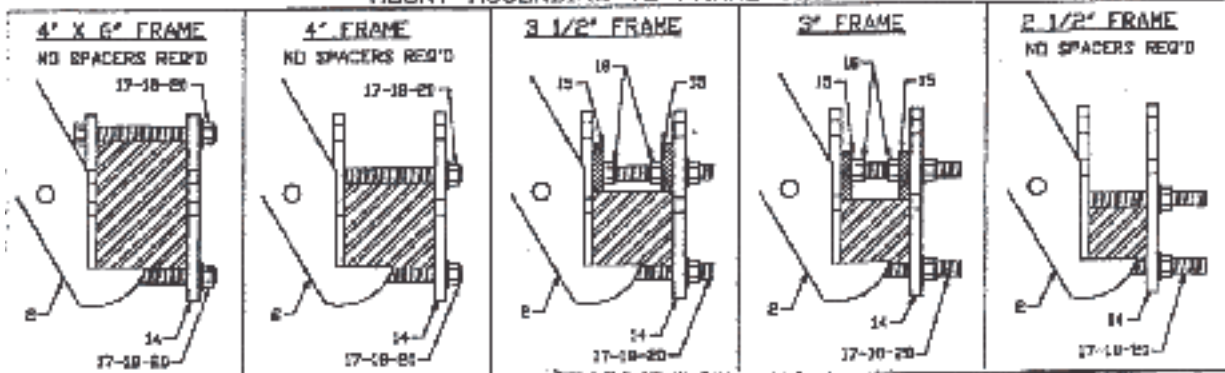


**DRAG KIT COMPONENTS**

Index No	Part No	Description	Weight
1	2K824	Drag Support	41
2	3K270	Drag Clamp	2
3	2K702	Cap Screw, 3/8 x 4	-
4	5C954	Locknut, 3/8-16 Hex	-
5	3K286	Link	1.5
6	3K287	Clevis Pin, 5/8 x 1 1/2	.5
7	3C350	Cotter Pin, 5/32 x 1	-
8	3K288	Strap	.5
9	8C527	Cap Screw, 1/2 x 1 1/2	-
10	5C392	Locknut, 1/2-13 Hex	-
11	2K828	Chain, Short	1.2
12	2K829	Chain, Long	2.2
13	3K291	Sleeve	.2
14	1C182	Flat Washer, 3/8	-
15	6D965	Capscrew, 7/16 x 3 1/2	.3
16	1C267	Cap Screw, 1.2 x 1 1/2	.1
17	9C134	Flat Washer, 1/2" SAE	-
18	6J050	U-Bolt, 5/8 x 3 11/16 x 5 5/16 Dp	.8
19	1B166	Lockwasher, 5/8	-
20	1C392	Nut, 5/8-11 Hex	-
21	2J784	Klik Pin	-
22	2K826	Draft Angle	6
23	6J587	Spike Bar--50" (5 spikes)	25
	7J072	Spike Bar--60" (6 spikes)	31
	6J588	Spike Bar--70" (7 spikes)	36
	7J077	Spike Bar--80" (8 spikes)	42
	6J589	Spike Bar--90" (9 spikes)	47
	6J590	Spike Bar--100" (10 spikes)	53
	7J102	Spike Bar--110" (11 spikes)	58
	2K800	Spike Bar--120" (12 spikes)	64
	1K313	Spike Bar--130" (13 spikes)	72
24	1C122	Flat Washer, 5/8	-
25	1D014	Lock Nut, 7/16-14 Hex Stover	-
26	6D340	Flat Washer, 7/16" SAE	-
27	6K086	Drag Guide (use on 5-section machines only)	14.5
28	5K438	Drag Angle (use on 5-section machines only)	8.0

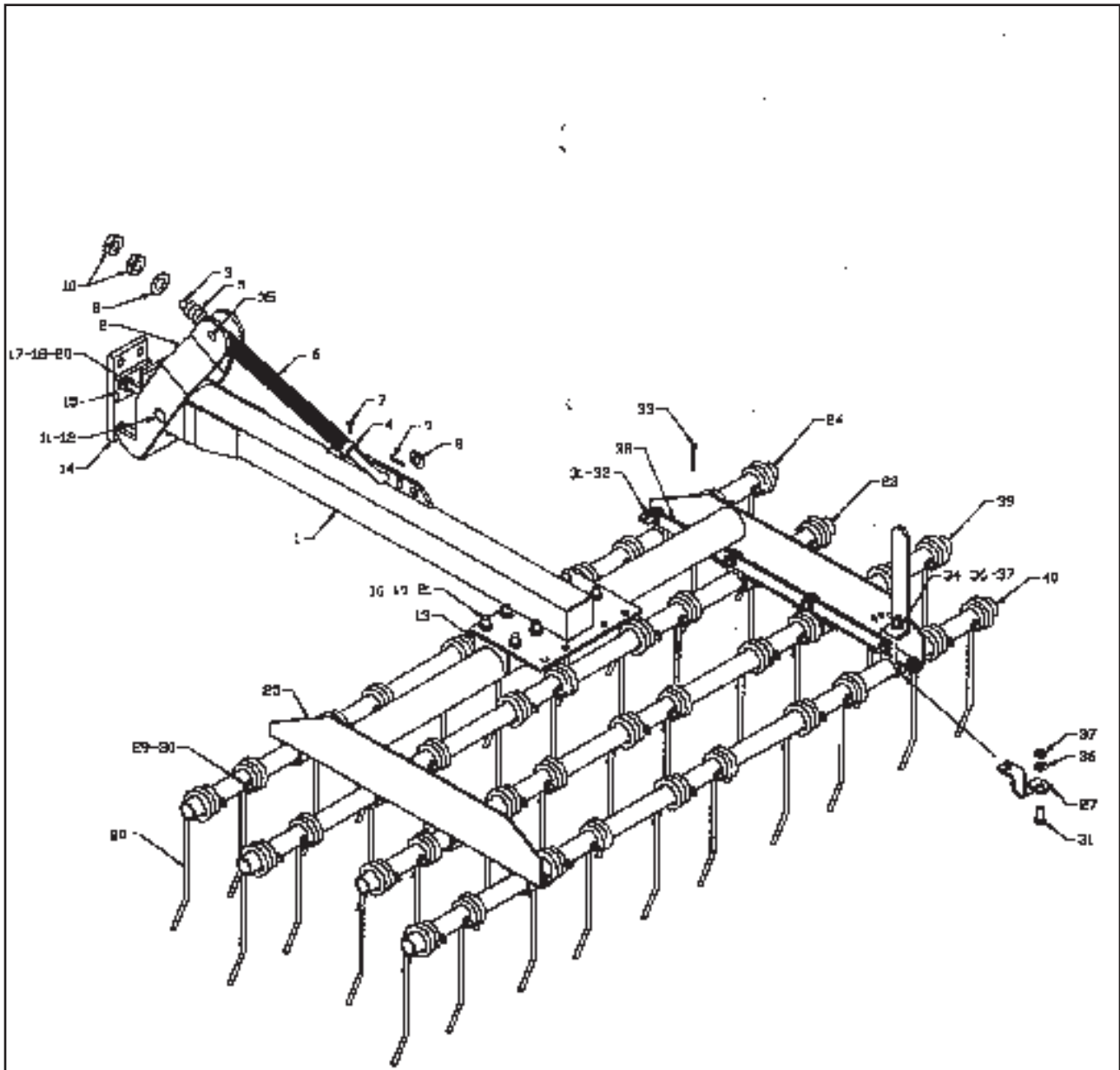


**MOUNT ACCORDING TO FRAME SIZE**

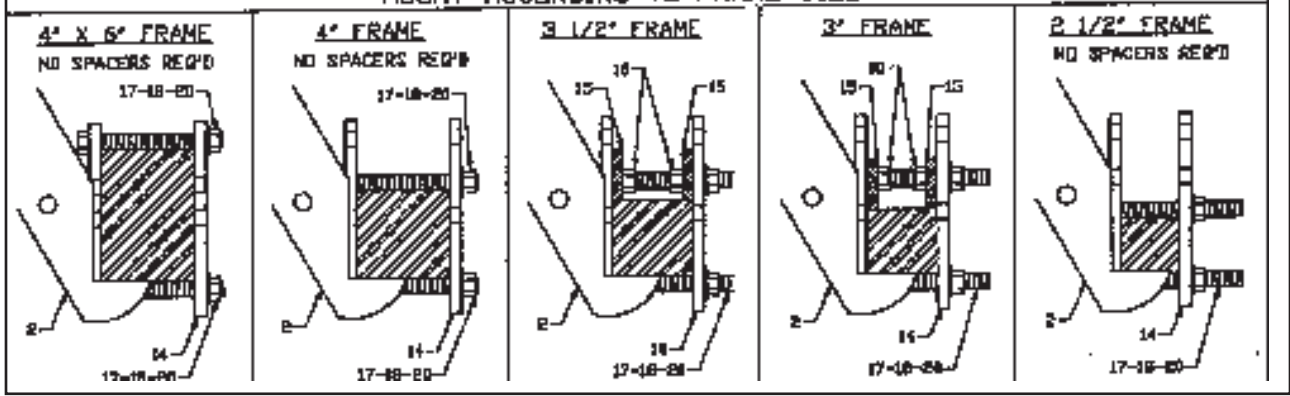


3-BAR COIL-TINE HARROW

Index No.	Part No.	Description	No. Req'd	Code
1	3K238	Mounting Arm Weldment	1	972100
2	3K239	Mount Assembly	1	972101
3	3K240	Pressure Rod	1	972102
4	3K241	Collar	1	972103
5	3K242	Short Spring	1	972104
6	3K243	Long Spring	1	972105
7	3C947	Set Screw 1/2-13 NC x 3/4" long	1	
8	2C458	Flat Washer, 3/4" SAE	1	
9	1D594	Hairpin Cotter, .178 Dia	1	
10	6C114	Jam Nut, 3/4-10 NC	2	
11	3K244	Carriage Bolt, 3/4-10 NC x 6" long	1	
12	6C729	Locknut, 3/4-10 NC Hex Stover	1	
13	3K245	Mounting Clamp	4	972107
14	3K246	Mounting Plate	1	972108
15	3K247	Spacer	2	972109
16	3K248	3" Round U-Bolt, 1/2-13 NC thread	4	972110
17	3K249	Full Thread Bolt, 5/8-11 NC x 6	4	972111
18	1C392	Nut, 5/8-11 NC Hex	4	
19	1C390	Nut, 1/2-13 NC Hex	8	
20	1B166	Lockwasher, 5/8"	4	
21	1C109	Lockwasher, 1/2"	8	
22	3K250	Rear Spring Tube, 4'-9"	1	972112
	3K251	Rear Spring Tube, 6'-0"	1	972113
	3K252	Rear Spring Tube, 7'-3"	1	972114
23	3K253	Center Spring Tube, 4'-9"	1	972115
	3K254	Center Spring Tube, 6'-0"	1	972116
	3K255	Center Spring Tube, 7'-3"	1	972117
24	3K256	Front Spring Tube, 4'-9"	1	972118
	3K257	Front Spring Tube, 4'-9"	1	972119
	3K258	Front Spring Tube, 7'-0"	1	972120
25	3K259	Mounting Frame, 4'-9"	1	972121
	3K260	Mounting Frame, 6'-0"	1	972122
	3K261	Mounting Frame, 7'-3"	1	972123
26	3K262	Tube Link Bar	1	972124
27	3K263	Spring Tube Clamp	6	972125
28	4K927	Double Coil Tine, Straight		972151
29	3K264	Hx. Hd. Shoulder Bolt, 3/8 x 2 1/2		972127
30	5C954	Locknut, 3/8-16 Hex Stover		
31	1D546	Capscrew, 7/16-14NC x 1 1/4	14	
32	1D014	Locknut, 7/16-14 Hex Stover	2	
33	1C869	Cotter Pin, 1/4 x 2 1/2	1	
34	6J665	Carriage Bolt, 7/16-14NC x 1 1/2	1	
35	3K265	Cast Trunion	1	988646
36	1C314	Lockwasher, 7/16	12	
37	1C179	Nut, 7/16-14 Std Hex	12	



Mount according to frame size





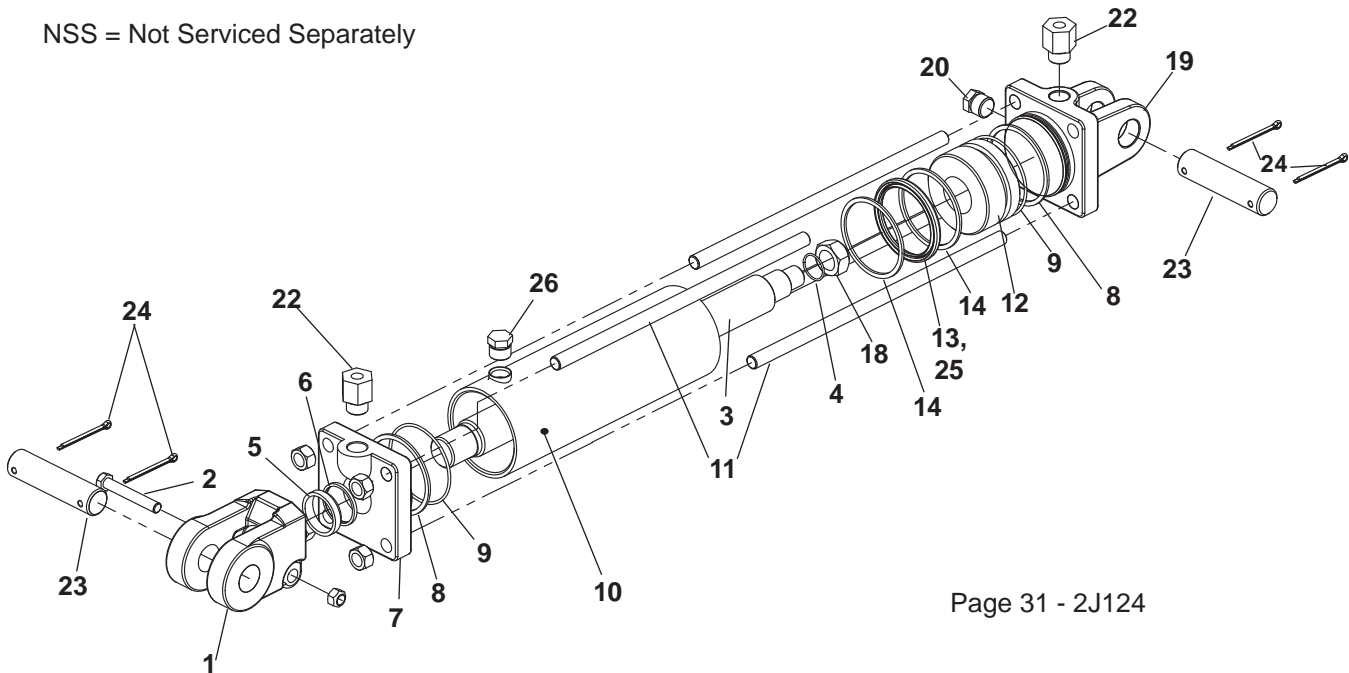
### 4-BAR COIL-TINE HARROW

Index No.	Part No.	Description	No. Req'd	Code
1	3K238	Mounting Arm Weldment	1	972100
2	3K239	Mount Assembly	1	972101
3	3K240	Pressure Rod	1	972102
4	3K241	Collar	1	972103
5	3K242	Short Spring	1	972104
6	3K243	Long Spring	1	972105
7	3C947	Set Screw 1/2-13 NC x 3/4" long	1	984110
8	2C458	Flat Washer, 3/4" SAE	1	84050
9	1D594	Hairpin Cotter, .178 Dia	1	965625
10	6C114	Jam Nut, 3/4-10 NC	2	86111
11	3K244	Carriage Bolt, 3/4-10 NC x 6" long	1	972106
12	6C729	Locknut, 3/4-10 NC Hex Stover	1	812365
13	3K245	Mounting Clamp	4	972107
14	3K246	Mounting Plate	1	972108
15	3K247	Spacer	2	972109
16	3K248	3" Round U-Bolt, 1/2-13 NC thread	4	972110
17	3K249	Full Thread Bolt, 5/8-11 NC x 6	4	972111
18	1C392	Nut, 5/8-11 NC Hex	4	81676
19	1C390	Nut, 1/2-13 NC Hex	8	81636
20	1B166	Lockwasher, 5/8"	4	81677
21	1C109	Lockwasher, 1/2"	8	81637
23	3K253	Center Spring Tube, 4'-9"	1	972115
	3K254	Center Spring Tube, 6'-0"	1	972116
	3K255	Center Spring Tube, 7'-3"	1	972117
24	3K256	Front Spring Tube, 4'-9"	1	972118
	3K257	Front Spring Tube, 6'-0"	1	972119
	3K258	Front Spring Tube, 7'-0"	1	972120
25	4K682	Mounting Frame, 4'-9"	1	972142
	4K683	Mounting Frame, 6'-0"	1	972143
	4K684	Mounting Frame, 7'-3"	1	972144
27	3K263	Spring Tube Clamp	6	972125
28	4K927	Double Coil Tine		972151
29	3K264	Hx. Hd. Shoulder Bolt, 3/8 x 2 1/2		972127
30	5C954	Locknut, 3/8-16 Hex Stover		812363
31	1D546	Capscrew, 7/16-14NC x 1 1/4	14	81598
32	1D014	Locknut, 7/16-14 Hex Stover	2	86273
33	1C869	Cotter Pin, 1/4 x 2 1/2	1	9812436
34	6J665	Carriage Bolt, 7/16-14NC x 1 1/2	1	984242
35	3K265	Cast Trunion	1	988646
36	1C314	Lockwasher, 7/16	12	81615
37	1C179	Nut, 7/16-14 Std Hex	12	81614
38	4K685	Tube Link Bar (4-Bar) 28 1/4" Long	1	972135
39	4K686	#3 Spring Tube 4'-9"	1	972136
	4K687	#3 Spring Tube 6'-0"	1	972137
	4K688	#3 Spring Tube 7'-3"	1	972138
40	4K689	#4 Spring Tube 4'-9"	1	972139
	4K690	#4 Spring Tube 6'-0"	1	972140
	4K691	#4 Spring Tube 7'-3"	1	972141

2K088P Hydraulic Cylinder, 4 x 8  
 Prince #AN-234 Painted Black  
 1 3/8" Rod Diameter; 20 1/4" Retracted, 28 1/4" Extended

<u>Item</u>	<u>Part No.</u>	<u>Description</u>	<u>Qty.</u>
1	3J723	Rod End Clevis, w/ 1 1/8" Dia. Thread (Before 2/98)	1
	6K841	Rod End Clevis, w/ 1 5/16" Dia. Thread (After 2/98)	1
2	5D667	Capscrew, 3/8-16 NC x 2 1/2"	1
	5C954	Stover Lock Nut, 3/8-16 NC	1
3	2K321	Piston Rod, 1 1/8" Dia. Clevis End (Prior to 2/98)	1
	6K840	Piston Rod, 1 5/16" Dia. Clevis End (After 2/98)	1
*4	NSS	O-Ring	1
*5	NSS	Rod Wiper	1
*6	NSS	U-Cup	1
7	2K322	Gland	1
*8	NSS	Back Up Washer	2
*9	NSS	O-Ring	2
10	9J622	Tube Assembly	1
11	8J859	Tie Rod with Nut	4
12	2K323	Piston	1
*13	NSS	O-Ring	1
*14	NSS	Bearing Ring	2
15-17	--	--	
18	9C223	Lock Nut, 1"-14 NF	1
19	7J053	Base	1
20	7J025	Steel Plug, O-Ring Tyupe (without O-Ring)	1
21	7J024	O-Ring (not a part of 7J025 and 7J026)	3
22	7J026	Adaptor (without O-Ring)	2
23	7J067	Clevis Pin, 1" Dia. x 4" Long	2
24	6C468	Cotter Pin, 3/16 x 2"	4
25	NSS	Teflon Seal	2
26	9J623	Plug	1
*	2K324	PMCK-AN-234Seal Kit	

NSS = Not Serviced Separately

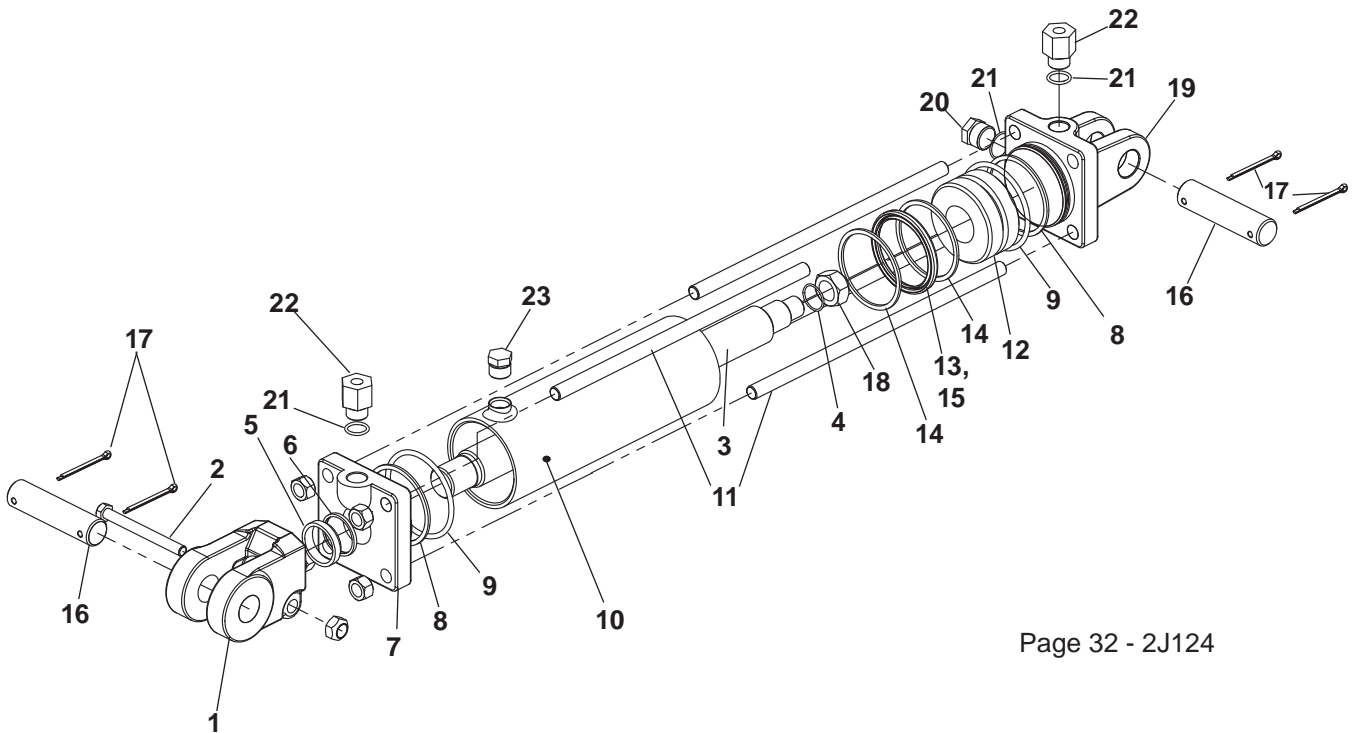


Page 31 - 2J124

2K093P Hydraulic Cylinder, 4 3/4 x 8  
 Prince #AN-285 Painted Black  
 1 1/2" Rod Diameter; 20 1/4" Retracted, 28 1/4" Extended

<u>Item</u>	<u>Part No.</u>	<u>Description</u>	<u>Qty.</u>
1	1J072	Rod End Clevis	1
2	5D667	Capscrew, 3/8-16 NC x 2 1/2"	1
	5C954	Stover Lock Nut, 3/8-16 NC	1
3	2K442	Piston Rod	1
*4	NSS	O-Ring	1
*5	NSS	Rod Wiper	1
*6	NSS	U-Cup	1
7	2K443	Gland w/ Bushing	1
*8	NSS	Back Up Washer	2
*9	NSS	O-Ring	2
10	9J628	Tube Assembly	1
11	5J161	Tie Rod with Nut	4
12	2K444	Piston	1
*13	NSS	O-Ring	1
*14	NSS	Bearing Ring	2
*15	NSS	Teflon Seal	1
16	7J067	Clevis Pin, 1" Dia. x 4" Long	2
17	6C468	Cotter Pin, 3/16 x 2"	4
18	8J852	Lock Nut, 1"-14 NF	1
19	7J057	Base	1
20	7J025	Steel Plug, O-Ring Type	1
21	7J024	O-Ring (not a part of 7J025 and 7J026)	3
22	7J026	Adaptor (without O-Ring)	2
23	9J623	Plug	1
*	2K445	PMCK-AN-285 Seal Kit	

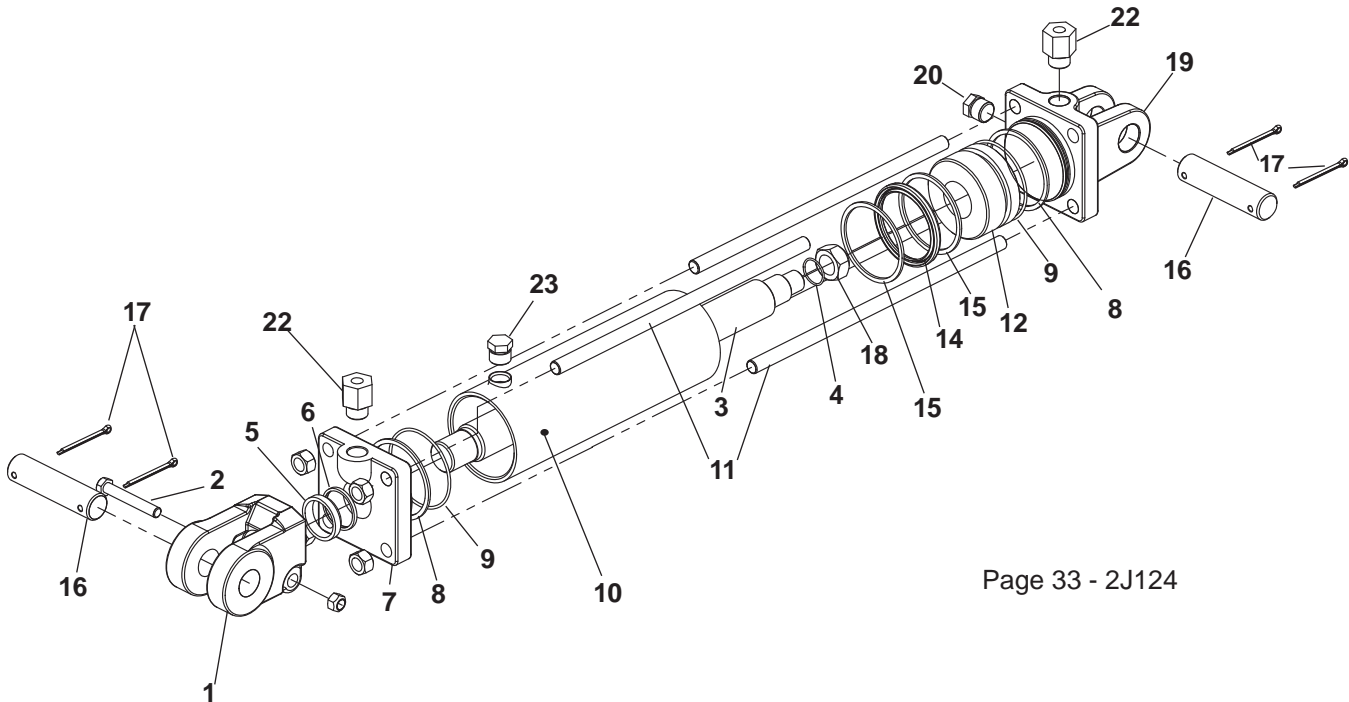
NSS = Not Serviced Separately



2K094P Hydraulic Cylinder, 4 1/2 x 8  
 Prince #AN-283 Painted Black  
 2" Rod Diameter; 20 1/4" Retracted, 28 1/4" Extended

<u>Item</u>	<u>Part No.</u>	<u>Description</u>	<u>Qty.</u>
1	1J072	Rod End Clevis	1
2	5D667	Capscrew, 3/8-16 NC x 2 1/2"	1
	5C954	Stover Lock Nut, 3/8-16 NC	1
3	2K446	Piston Rod	1
*4	NSS	O-Ring	1
*5	NSS	Rod Wiper	1
*6	NSS	U-Cup	1
7	2K447	Gland w/ Bushing	1
*8	NSS	Back Up Washer	2
*9	NSS	O-Ring	2
10	9J626	Tube Assembly	1
11	5J161	Tie Rod with Nut	4
12	2K448	Piston	1
*13	NSS	O-Ring	1
*14	NSS	Teflon Seal	1
*15	NSS	Bearing Ring	2
16	6D529	Clevis Pin, 1" Dia. x 4" Long	2
17	6C468	Cotter Pin, 3/16 x 2"	4
18	8J852	Lock Nut, 1 1/8"-12 NF	1
19	7J059	Base	1
20	7J025	Steel Plug, O-Ring Type	1
21	7J024	O-Ring (not a part of 7J025 and 7J026)	3
*22	7J026	Adaptor (without O-Ring)	2
23	9J623	Plug	1
*	2K449	PMCK-AN-283 Seal Kit	

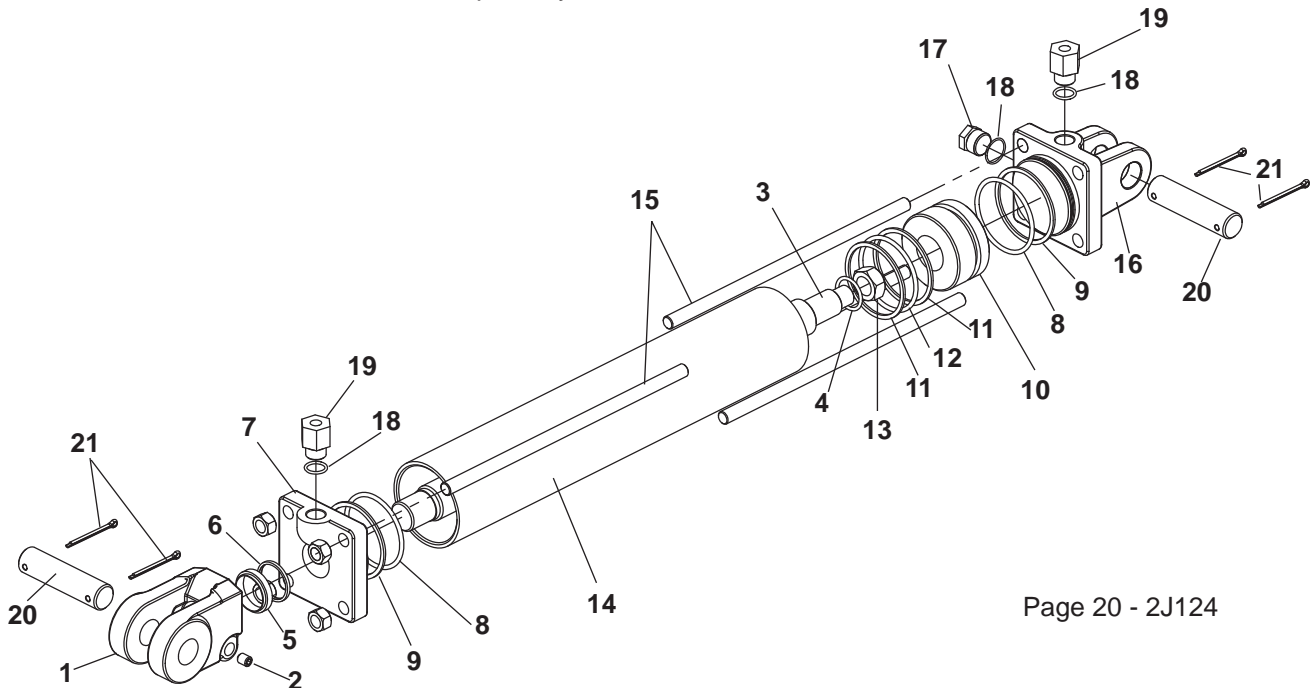
NSS = Not Serviced Separately



Page 33 - 2J124

5J830P Hydraulic Cylinder, 4 x 30  
 Prince #AB-165 Painted Black  
 1 3/4" Rod Diameter; 40 1/4" Retracted, 70 1/4" Extended

<u>Item</u>	<u>Part No.</u>	<u>Description</u>	<u>Qty.</u>
1	1J072	Rod End Clevis	1
2	6J345	Set Screw, 3/8-24 NF x 1/2"	1
3	6J336	Piston Rod	1
*4	NSS	O-Ring	1
*5	NSS	Rod Wiper	1
*6	NSS	U-Cup	1
*7	7J052	Gland (With Port Requiring O-Ring Fitting)	1
	1J946	Gland (With Pipe Thread)	
		When this number is ordered you will receive (1) 7J052, (1) 7J024, and (1) 7J026	
*8	NSS	O-Ring	2
*9	NSS	Back-Up Washer	2
10	1J947	Piston	1
*11	NSS	Back Up Washer	2
*12	NSS	O-Ring	1
13	1J951	Locknut, 1 1/4-12 NF	1
14	6J337	Tube	1
15	6J338	Tie Rod	4
16	7J053	Base (with Ports Requiring O-Ring Fittings)	1
	1J950	Base (with Pipe Thread)	
		When this number is ordered you will receive (1) 7J053, (2) 7J024, and (1) 7J025, and (1) 7J026	
17	7J025	Steel Plug, O-Ring type (without O-Ring)	1
18	7J024	O-Ring (not a part of 7J025 & 7J026)	3
19	7J026	Adaptor (without O-Ring)	2
20	7J067	Clevis Pin 1" dia. x 4" Long	2
21	1C278	Cotter Pin, 5/32" x 2"	4
*	1J070	PMCK-AB-165 Seal Kit	
	NSS =	Not Serviced Separately	

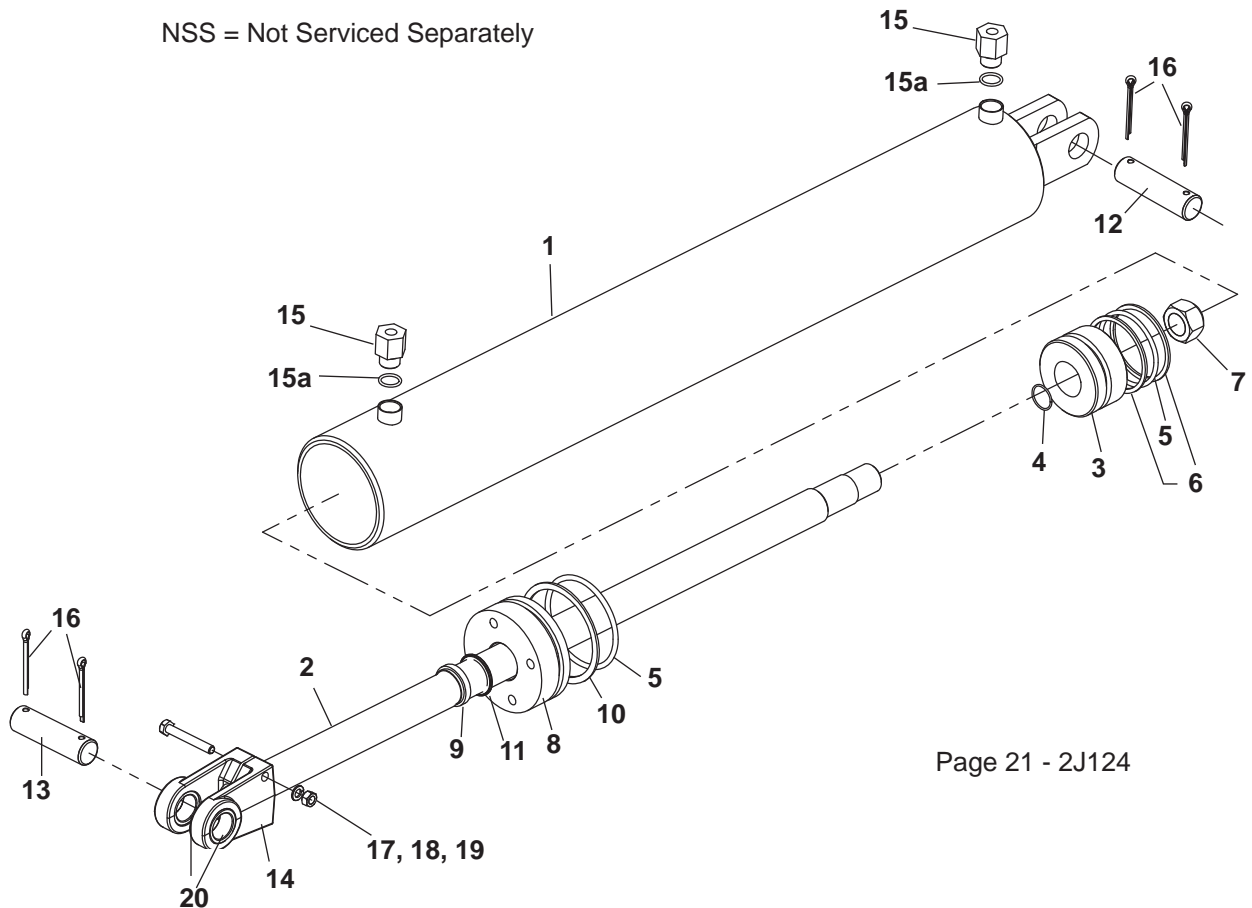


Page 20 - 2J124

5J830G Hydraulic Cylinder 4 x 30  
 Hydraulic Gear #BIW4030 Painted Black  
 1-3/4 Dia. Rod, 40-1/4 Retracted, 70-1/4 Extended Length

<u>Item</u>	<u>Part No.</u>	<u>Description</u>	<u>Qty.</u>
1	8K602	Cylinder Tube	1
2	8K603	Rod	1
3	1J955	Piston	1
*4	NSS	O-ring	1
*5	NSS	O Ring	2
*6	NSS	Spiral Teflon Backup	1
7	1J951	Nut, 1 1/4-20 NC	1
8	1J953	Packing Gland	1
*9	NSS	Rod Wiper	1
*10	NSS	Parback	1
*11	NSS	Polyseal	1
12	5J650	Pin (Backcap End)	1
13	5K798	Pin (Rod End Clevis)	1
14	5J195	Clevis	1
15	7J026	Adapter (without O-ring)	2
15-a	7J024	O-ring	2
16	6C468	Cotter Pin	4
17	9D797	HHCS, 5/16 -18 NC x 2 1/4"	1
18	1C385	Nut, 5/16-18 NC Hex	1
19	1C362	Lock Washer, 15/16"	1
20	5K964	Bushing	2
*	8K604	Seal Kit (Items marked "**")	

NSS = Not Serviced Separately

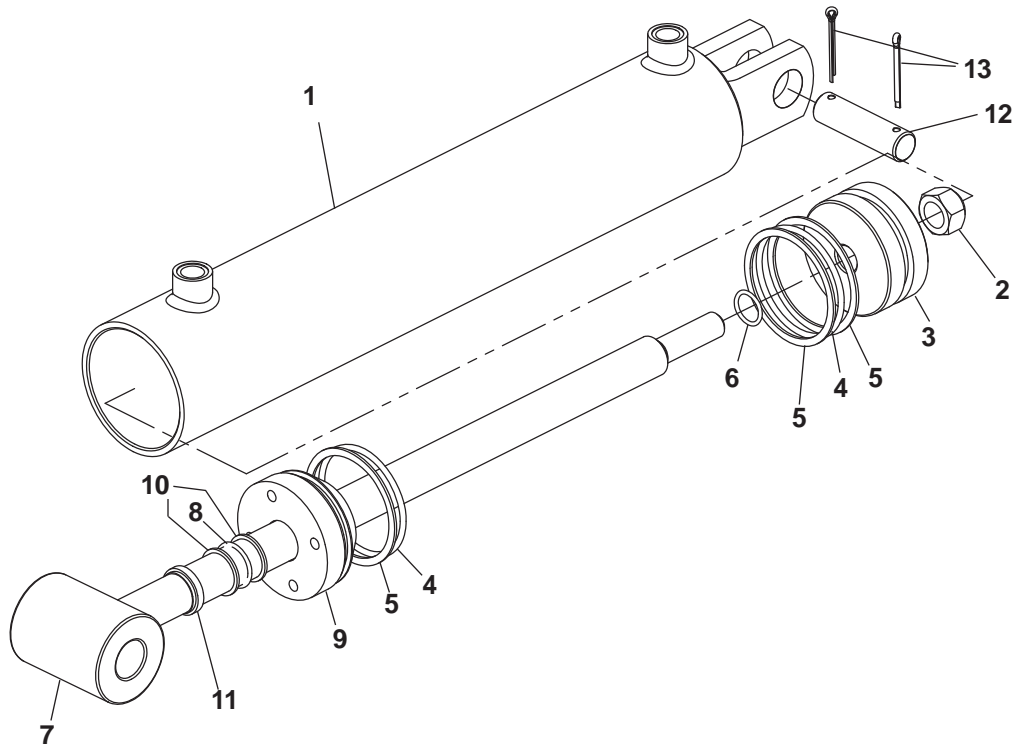


Page 21 - 2J124

3J568G Hydraulic Cylinder 4 x 24  
 Hydraulic Gear #4024-01 Painted Black  
 1-3/4" Dia. Rod, 34-1/4 Retracted, 58-1/4 Extended Length

<u>Item</u>	<u>Part No.</u>	<u>Description</u>	<u>Qty.</u>
1	3J769	Tube Assembly	1
2	1J951	Hex Nut 1-1/4-12 NF Lock	1
3	1J955	Piston	1
4	NSS	O Ring	2
5	NSS	Back-Up Ring	3
6	NSS	Seal	1
7	3J770	Rod Assembly	1
*8	NSS	Rod Seal	1
9	1J953	Packing Gland	1
*10	NSS	Back Up Ring	2
*11	NSS	Wiper	1
12	3J771	Cylinder Pin	1
13	1C869	Cotter Pin, 1/4 " x 2"	2
*	1J956	Seal Kit (Items marked "**")	

NSS = Not Serviced Separately



# INDEX

Part No.	Page No.	Index No.	Part No.	Page No.	Index No.	Part No.	Page No.	Index No.
<b>B</b>			4C446	24	11	6C406	9	13
1B166	19	4	4C803	11	38	6C406	11	13
1B166	25	19	4C803	9	43	6C406	23	29
1B166	27	20	4C858	9	11	6C729	5	5
			4C858	11	11	6C729	9	9
			4C858	5	12	6C729	11	9
<b>C</b>			4C858	23	15	6C729	27	12
1C023	9	4	5C100	17	6	6C729	13	26
1C023	19	18	5C100	13	22	6C729	15	26
1C109	27	21	5C100	15	22	6C729	7	28
1C109	19	49	5C124	19	35	7C414	17	10
1C120	19	50	5C392	3	6	8C527	25	9
1C122	25	24	5C392	25	10	8C527	19	47
1C179	27	37	5C392	19	15	9C059	19	36
1C182	25	14	5C392	7	25	9C059	19	52
1C267	25	16	5C392	9	25	9C134	25	17
1C314	27	36	5C460	19	40			
1C331	9	24	5C461	9	7			
1C331	3	31	5C461	11	7	<b>D</b>		
1C361	21	21	5C461	17	7	1D014	25	25
1C361	23	30	5C461	19	8	1D04	27	32
1C362	21	22	5C461	3	26	1D237	3	5
1C362	23	31	5C461	5	38	1D237	19	43
1C385	21	23	5C479	13	19	1D546	27	31
1C385	23	32	5C479	15	19	1D594	27	9
1C390	27	19	5C479	17	20	1D604	5	21
1C392	19	5	5C480	17	19	1D604	11	36
1C392	27	18	5C480	13	20	1D604	9	38
1C392	25	20	5C480	15	20	1D807	13	3
1C659	5	19	5C561	24	8	1D808	13	4
1C675	19	33	5C594	27	30	2D474	19	3
1C787	24	10	5C913	7	9	2D894	5	27
1C787	5	24	5C913	13	17	3D531	7	12
1C788	13	15	5C913	15	17	3D532	7	11
1C788	15	15	5C913	17	23	3D786	3	21
1C788	17	25	5C914	7	10	3D925	23	19
1C869	27	33	5C914	13	18	4D345	7	24
1C871	13	13	5C914	15	18	4D983	24	9
1C871	15	13	5C914	17	22	5D142	19	16
1C871	23	15	5C954	25	4	5D335	19	14
1C871	17	24	5C954	17	16	6D049	13	9
2C458	27	8	5C954	23	20	6D049	15	9
3C142	5	20	5C954	13	24	6D049	7	23
3C173	7	6	5C954	15	24	6D284	13	14
3C350	7	7	5C954	11	39	6D284	15	14
3C350	25	7	5C954	9	44	6D284	17	26
3C947	27	7	6C114	27	10	6D306	5	8
3C998	5	33	6C306	9	15	6D306	3	14
3C998	9	33	6C334	13	5	6D306	11	15
3C998	11	33	6C406	24	5	6D311	17	29
			6C406	5	11	6D312	13	28



Part No.	Page No.	Index No.	Part No.	Page No.	Index No.	Part No.	Page No.	Index No.
6D312	15	28	3J578	7	27	8J795	13	29
6D336	13	12	3J598	5	3	8J795	15	29
6D336	15	12	3J598	9	17	9J206	9	5
6D336	17	21	3J598	11	17	9J206	5	15
6D337	7	8	3J609	7	14	9J206	23	29
6D337	13	16	3J614	21	20	9J629	3	27
6D337	15	16	3J614	23	22	9J695	23	15
6D337	17	27	3J675	9	35			
6D338	17	18	3J678	3	23			
6D338	13	21	4J410	24	4	<b>K</b>		
6D338	15	21	4J410	17	12	1K204	21	29
6D340	25	26	4J410	9	30	1K204	23	38
6D355	19	30	4J410	11	30	1K236	19	12
6D716	23	25	4J410	5	32	1K240	19	1
6D769	17	15	4J411	19	7	1K313	25	23
6D769	13	23	4J411	11	42	1K557	5	7
6D769	15	23	4J412	19	53	1K557	9	14
6D854	3	16	4J528	19	32	1K557	11	14
6D854	5	29	4J548	5	10	1K732	3	9
6D965	25	15	4J548	9	12	1K787	3	10
8D220	19	13	4J548	11	12	1K788	3	13
8D221	19	11	4J548	23	29	1K936	11	40
9D674	21	17	4J565	7	19	1K936	9	45
9D674	23	23	4J699	7	15	2K088	21	14
9D693	5	6	4J801	19	27	2K088	11	21
9D693	9	18	4J804	19	26	2K093	5	2
9D693	11	18	4J916	19	57	2K093	21	15
9D923	17	8	5J333	3	19	2K094	21	16
9D923	5	16	5J492	19	10	2K094	9	21
9D923	9	27	5J571	5	41	2K220	13	2
9D923	11	27	5J830	23	15	2K228	13	6
			5J914	24	7	2K229	13	7
			5J914	3	25	2K229	7	17
			6J050	17	5	2K241	13	10
			6J050	9	6	2K242	13	11
			6J050	25	18	2K305	19	34
			6J376	3	22	2K306	19	31
			6J448	11	41	2K702	25	3
			6J448	9	46	2K734	15	10
			6J580	5	23	2K737	15	7
			6J587	25	23	2K738	15	11
			6J588	25	23	2K800	25	23
			6J589	25	23	2K824	25	1
			6J590	25	23	2K826	25	22
			6J665	27	34	2K828	25	11
			7J072	25	23	2K829	25	12
			7J077	25	23	2K912	5	18
			7J102	25	23	3K238	27	1
			7J142	5	31	3K239	27	2
			7J142	9	31	3K240	27	3
			7J142	11	31	3K241	27	4
			8J310	3	18	3K242	27	5
			8J794	17	28	3K243	27	6
<b>J</b>								
2J095	9	32						
2J095	11	32						
2J095	5	37						
2J430	9	37						
2J431	9	36						
2J716	13	8						
2J716	15	8						
2J716	7	22						
2J784	25	21						
3J394	7	4						
3J396	7	13						
3J397	7	5						
3J510	23	29						
3J510	11	35						
3J568	23	29						
3J578	9	19						
3J578	11	19						
3J578	13	25						
3J578	15	25						

Part No.	Page No.	Index No.	Part No.	Page No.	Index No.	Part No.	Page No.	Index No.
3K244	27	11	4K216	3	1	4K442	19	26
3K245	27	13	4K238	13	1	4K463	3	12
3K246	27	14	4K239	13	1	4K466	9	20
3K247	27	15	4K241	9	16	4K466	11	20
3K248	27	16	4K241	11	16	4K466	7	26
3K249	27	17	4K242	9	16	4K466	13	27
3K250	27	22	4K242	11	16	4K466	15	27
3K251	27	22	4K243	5	1	4K470	11	16
3K252	27	22	4K253	9	1	4K471	11	16
3K253	27	23	4K254	9	1	4K483	5	40
3K254	27	23	4K256	11	1	4K484	19	39
3K255	27	23	4K257	11	1	4K497	19	37
3K256	27	24	4K265	3	15	4K502	9	23
3K257	27	24	4K265	11	25	4K503	9	22
3K258	27	24	4K265	5	39	4K550	17	1
3K259	27	25	4K272	5	34	4K551	19	58
3K260	27	25	4K272	9	34	4K554	17	13
3K261	27	25	4K272	11	34	4K559	17	14
3K262	27	26	4K286	9	2	4K560	17	17
3K263	27	27	4K287	9	2	4K561	17	2
3K264	27	29	4K297	9	26	4K563	24	3
3K265	27	35	4K297	11	26	4K564	24	6
3K270	25	2	4K297	5	35	4K565	5	17
3K286	25	5	4K298	9	29	4K569	17	4
3K287	25	6	4K298	11	29	4K570	5	22
3K288	25	8	4K298	5	30	4K575	5	25
3K291	25	13	4K299	5	4	4K578	17	11
3K342	5	33	4K299	9	8	4K584	3	7
3K342	9	33	4K299	11	8	4K584	5	28
3K342	11	33	4K301	9	28	4K594	17	3
3K394	17	30	4K301	11	28	4K595	17	9
3K395	13	30	4K301	5	36	4K598	3	24
3K395	15	30	4K302	9	28	4K600	3	20
3K498	7	29	4K302	11	28	4K602	21	10
3K504	19	9	4K302	5	36	4K602	23	10
3K706	3	17	4K309	5	13	4K603	21	13
3K888	23	7	4K315	3	4	4K603	23	13
3K935	19	44	4K320	11	2	4K604	23	12
4K026	3	8	4K321	11	3	4K606	23	17
4K036	9	41	4K322	5	14	4K607	23	14
4K037	9	41	4K325	3	3	4K608	21	11
4K038	9	42	4K326	11	22	4K608	23	11
4K074	21	18	4K329	9	3	4K620	5	9
4K075	21	19	4K332	3	11	4K620	9	10
4K165	19	-	4K339	24	1	4K620	11	10
4K166	19	2	4K354	24	2	4K637	19	41
4K168	19	6	4K359	7	21	4K638	19	42
4K183	7	30	4K360	7	20	4K644	3	29
4K203	7	16	4K367	11	1	4K644	9	39
4K206	7	18	4K368	11	1	4K645	3	30
4K207	7	3	4K372	3	2	4K645	9	40
4K208	7	2	4K373	15	1	4K805	21	8
4K215	7	1	4K374	15	1	4K805	23	8
						4K806	23	16

Part No.	Page No.	Index No.	Part No.	Page No.	Index No.	Part No.	Page No.	Index No.
4K810	11	37	6K262	19	53			
4K810	5	43	6K263	19	55			
4K810	9	47	6K264	19	56			
4K813	5	42	6K265	19	54			
4K815	5	26	6K266	19	54			
4K816	19	-	7K530	19	17			
4K817	19	2						
4K819	3	16						
4K856	11	4						
4K857	11	6						
4K857	23	29						
4K860	23	26						
4K861	23	27						
4K862	23	28						
4K873	23	18						
4K875	23	21						
4K878	21	12						
4K881	23	3						
4K882	23	2						
4K883	23	6						
4K884	21	7						
4K885	21	1						
4K885	23	4						
4K886	21	3						
4K887	23	5						
4K889	23	24						
4K890	21	2						
4K891	21	4						
4K893	21	5						
4K894	21	6						
4K896	21	5						
4K897	21	6						
4K899	21	24						
4K899	23	33						
4K900	21	25						
4K900	23	34						
4K901	21	26						
4K901	23	35						
4K902	21	27						
4K902	23	36						
4K903	21	28						
4K903	23	37						
4K906	11	24						
4K912	21	9						
4K912	23	9						
4K927	27	28						
5K164	19	51						
5K175	19	45						
5K179	19	46						
5K181	11	43						
5K438	25	28						
6K086	25	27						







---

# Intertek

Equipment from Landoll Corporation is built to exacting standards ensured by ISO 9001:2008 registration at all Landoll manufacturing facilities.

## **LANDOLL CORPORATION**

1900 North Street

Marysville, Kansas 66508

(785) 562-5381

**800-428-5655 ~ [WWW.LANDOLL.COM](http://WWW.LANDOLL.COM)**



Copyright 2010. Landoll Corporation

"All rights reserved, including the right to reproduce this material or portions thereof in any form"

---