

REPAIR PARTS CATALOG



HFC Field Commander

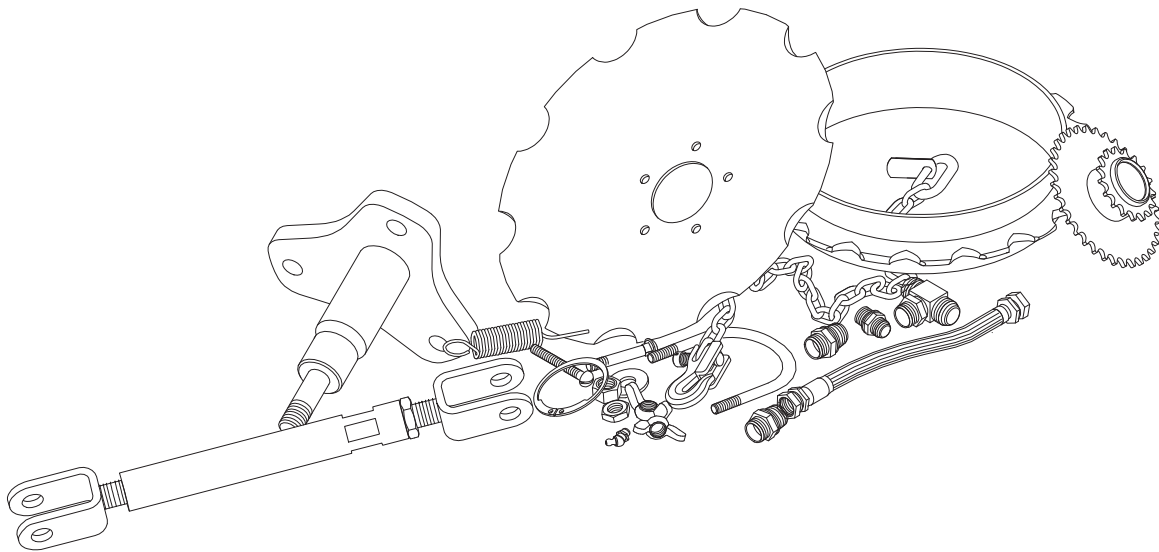
MODELS: HFC16 THROUGH HFC31
HFCT20 THROUGH HFCT31
HFK16 THROUGH HFK31
HFKT16 THROUGH HFKT31




IMPORTANT!
Repairs cannot be purchased
retail direct from factory.
Order through your Brillion dealer.

Contents

Frame & Drawbar	2, 3
Center Rockshaft & Leveling Linkage	4, 5
Wings & Wing Rockshafts (20' - 31' Machines).....	6, 7
Wing Components (16' - 19' Machines).....	8, 9
Rockshafts & Components.....	10, 11
S-Tine & Shank Assembly	12- 13b
Wing Lift Hydraulics.....	14, 15
Gage Wheel Hydraulics (20' - 31').....	16, 17
Gage Wheel Hydraulics (16' - 19').....	18
Gage Wheel Kit	19
Light Kit	19a, b
Rear Hitch Assembly	20
Drag Kit Components	21
3-Bar Coil Tine Harrow	22, 23
Cylinder Components.....	24-28
Index.....	29



OPERATOR'S MANUAL

FIELD CULTIVATOR
 2K314

⚠ DANGER
 ROLLING HAZARDS OR OTHER DEVICES MOUNTED ON THE REAR OF THIS MACHINE WILL USUALLY MARK IT ORANGE-LIGHT. TO AVOID PERSONAL INJURY FROM MACHINE TIPPING REARWARD, ALWAYS LOWER TIRES TO GROUND BEFORE DISCONNECTING TRACTOR. SEE OPERATOR'S MANUAL FOR DETAILS. SLS333

⚠ DANGER
 WATCH FOR ELECTRICAL WIRES AND OTHER OVERHEAD OBSTRUCTIONS WHEN FOLDING WINGS. FAILURE TO HEED THESE WARNINGS MAY RESULT IN PERSONAL INJURY OR DEATH.

⚠ DANGER
 BLEED THE AIR FROM WING LIFT CYLINDERS BEFORE OPERATING. FAILURE TO DO SO WILL ALLOW WINGS TO FREE-FALL AND MAY CAUSE SERIOUS PERSONAL INJURY. SEE OPERATOR'S MANUAL FOR CORRECT PROCEDURE.

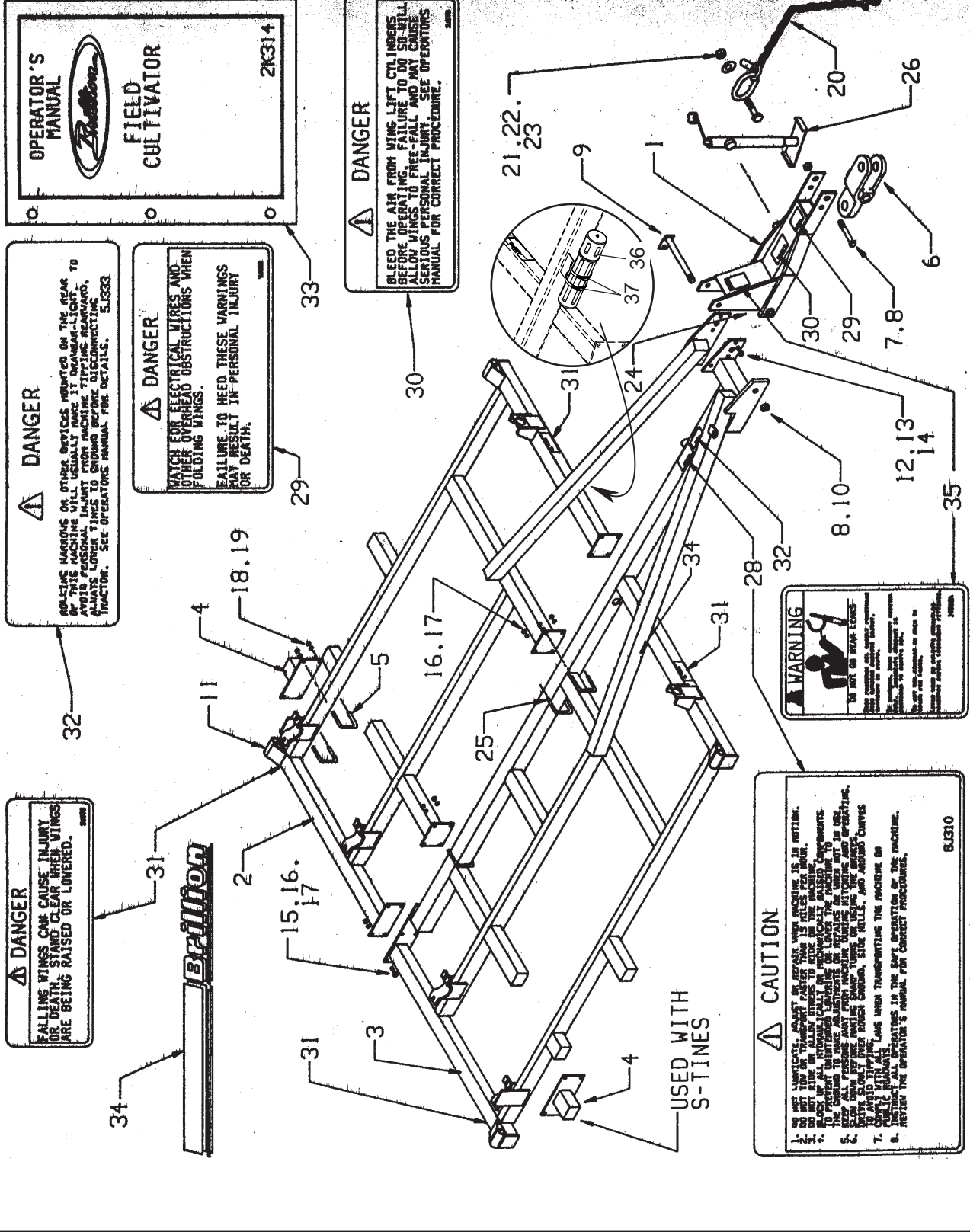
⚠ DANGER
 FALLING WINGS CAN CAUSE INJURY OR DEATH. STAND CLEAR WHEN WINGS ARE BEING RAISED OR LOWERED.

⚠ WARNING

 DO NOT GO NEAR LEADS. THESE CABLES ARE UNDER TENSION. DO NOT TOUCH. ALWAYS WEAR SAFETY SHOES. DO NOT TRIP OVER CABLES. ALWAYS WEAR SAFETY SHOES.

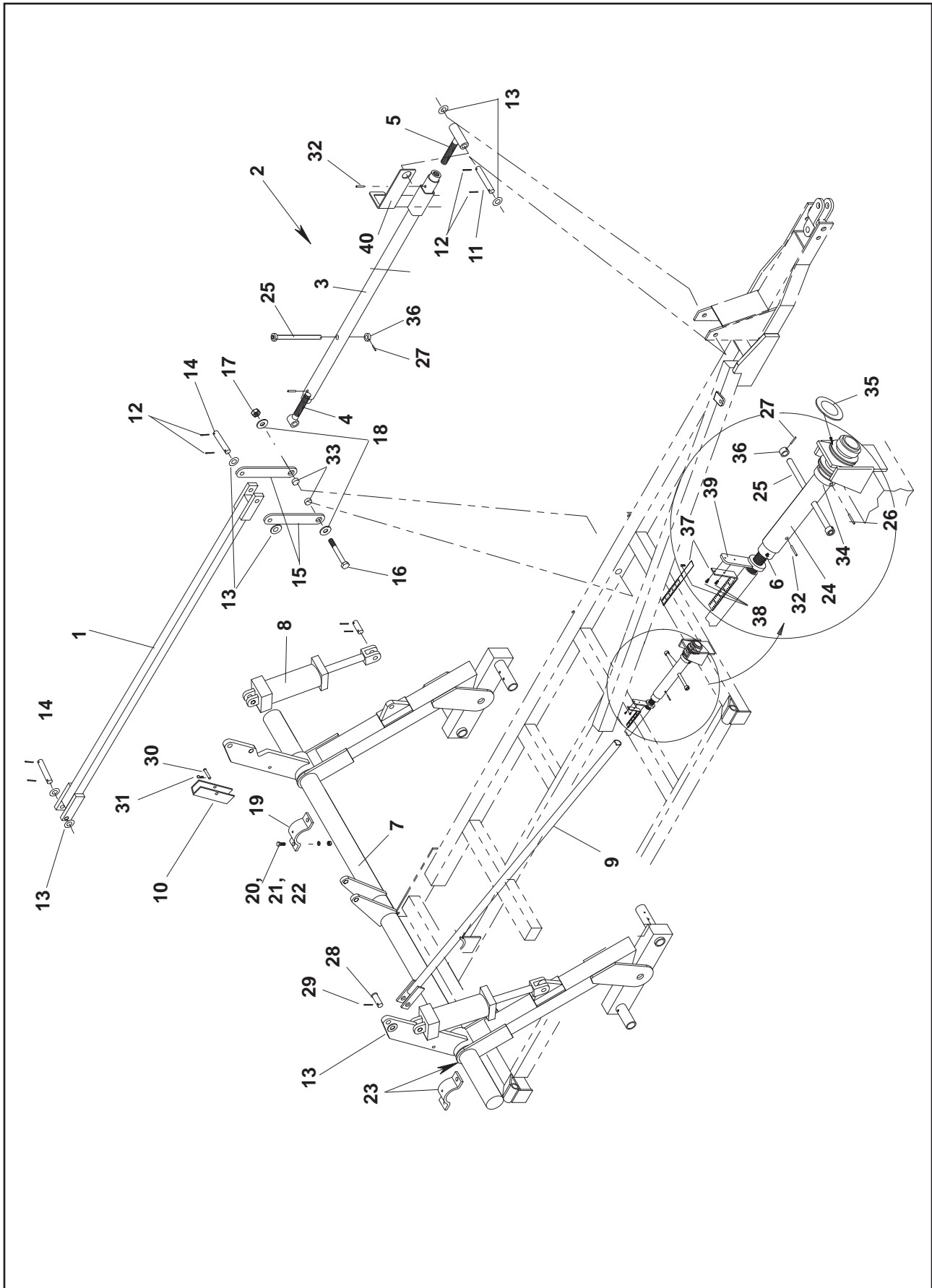
⚠ CAUTION
 1. DO NOT OPERATE WHEN MACHINE IS IN MOTION.
 2. DO NOT OPERATE WHEN TIRE PRESSURE IS LOWER THAN 15 PSI PER TIRE.
 3. DO NOT OPERATE WHEN TIRE PRESSURE IS HIGHER THAN 30 PSI PER TIRE.
 4. DO NOT OPERATE WHEN TIRE PRESSURE IS UNBALANCED.
 5. TO PREVENT UNCONTROLLED LANDING OR LOWER THE MACHINE TO THE GROUND TO MAKE ADJUSTMENTS OR REPAIRS ON WINGS OR TIRES. LOWER DOWN BEFORE MAKING SHARP TURNS ON HILLS, AND AVOID CURVES.
 6. DO NOT OPERATE WHEN WINGS ARE NOT FULLY RAISED.
 7. DO NOT OPERATE WHEN WINGS ARE NOT FULLY LOWERED.
 8. ALWAYS WEAR SAFETY SHOES.
 9. REVIEW THE OPERATOR'S MANUAL FOR CORRECT PROCEDURES.

6.6310

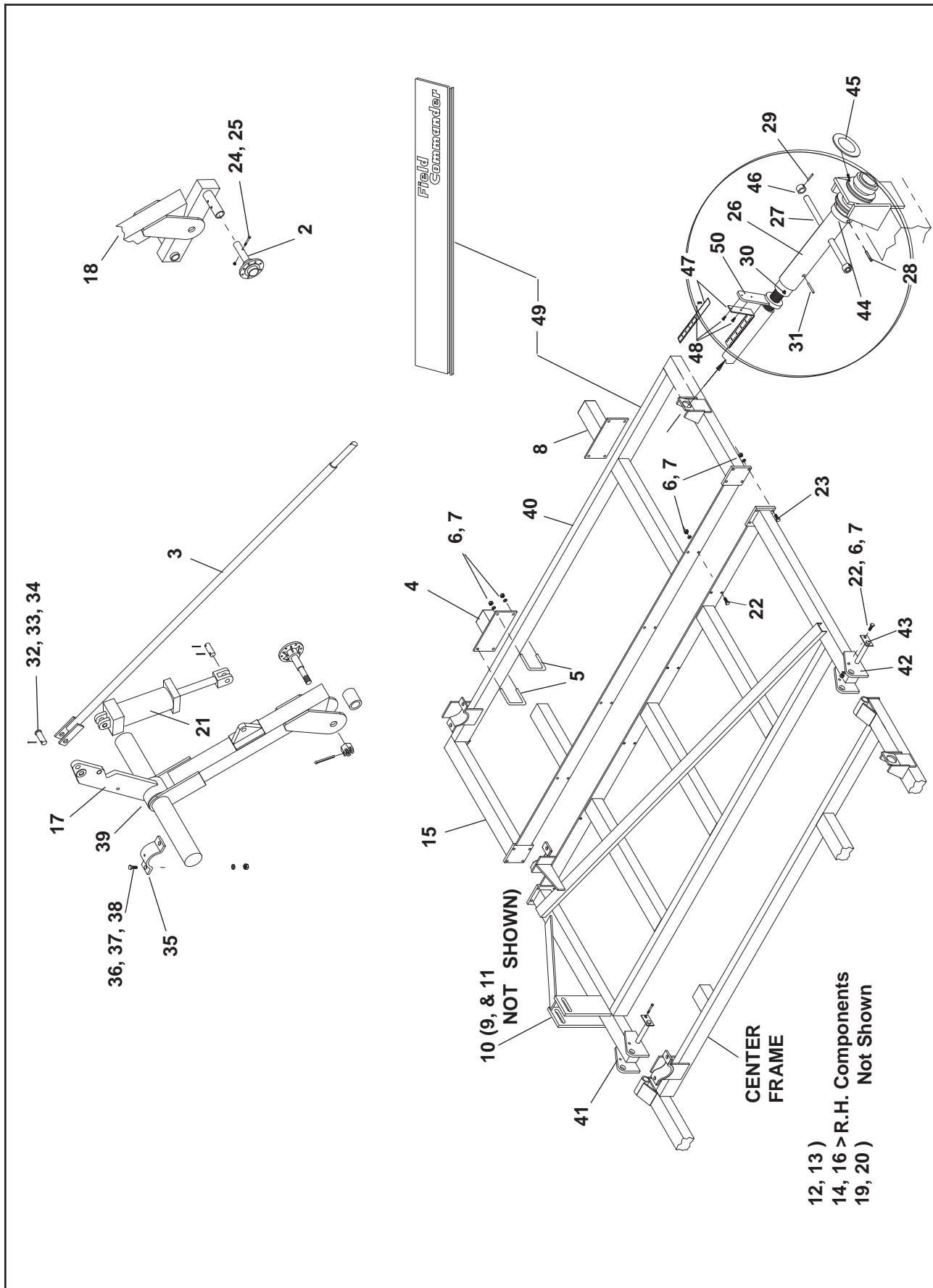


FRAME AND DRAWBAR

Index No.	Part No.	Description	No. Req'd	Weight
1	2K126	Tongue	1	155
2	2K730	Frame, Left	1	466
3	2K731	Frame, Right	1	680
4	2K251	5" Shank Mount, (HFCS Models)	2	8
5	5J915	U-bolt, 1/2-13 x 4 x 3 1/4 deep (HFCS Models)	4	1
6	2J858	Hitch	1	26
7	3J607	Machine Bolt, 1 1/4" x 9 1/2	1	3
8	2J783	Locknut, 1 1/4-7 NC Hex w/ Nylon Insert	2	1
9	2K246	Pivot Pin	1	6
10	6C406	Flat Washer, 1 1/4 SAE	1	
11	9D923	Grease fitting	4	
12	1D424	Cap Screw, 3/4-10 NC x 2	3	.3
13	1C210	Nut, 3/4-10 NC Hex	3	
14	1C211	Lock Washer, 3/4 Reg.	3	
15	4D561	Cap Screw, 5/8-11 NC x 1 1/2	4	.2
16	1B166	Lock Washer, 5/8 Reg.	16	
17	1C392	Nut, 5/8-11 NC Hex	16	
18	1C390	Nut, 1/2-13 NC Hex (HFCS Models)	8	
19	1C109	Lock Washer, 1/2 Reg. (HFCS Models)	8	
	1K822	Safety Chain Kit (items 20-23)	1	6.5
20	1K731	Safety Chain, 10,100 lb.	1	5
21	8D388	Capscrew, 1-8 x 2 1/2, Gr 5	1	.8
22	1C787	Flat Washer, 1"	1	
23	6D306	Locknut, 1-8	1	
24	3C491	Grease fitting	1	
25	9D989	U-Bolt, 5/8-11 x 4 11/16 x 5 5/8 deep	6	1.4
26	4J867	Jack	1	15
	6K458	Replacement Pin, 9/16" with chain & screw	1	.36
27	2K190	Decal Package (includes all decals for machine)	1	
28	8J310	Caution Decal	1	
29	9J629	Danger Decal	1	
30	3J678	Danger Decal	1	
31	3J675	Danger Decal	4	
32	5J333	Danger Decal	2	
33	2K314	Operators Manual	1	
34	4K037	BRILLION Decal	2	
35	3K706	WARNING Decal (Hydraulic Leak)	1	-
36	8K349	Manual Cannister	1	
37	8K350	Hose Clamp	2	

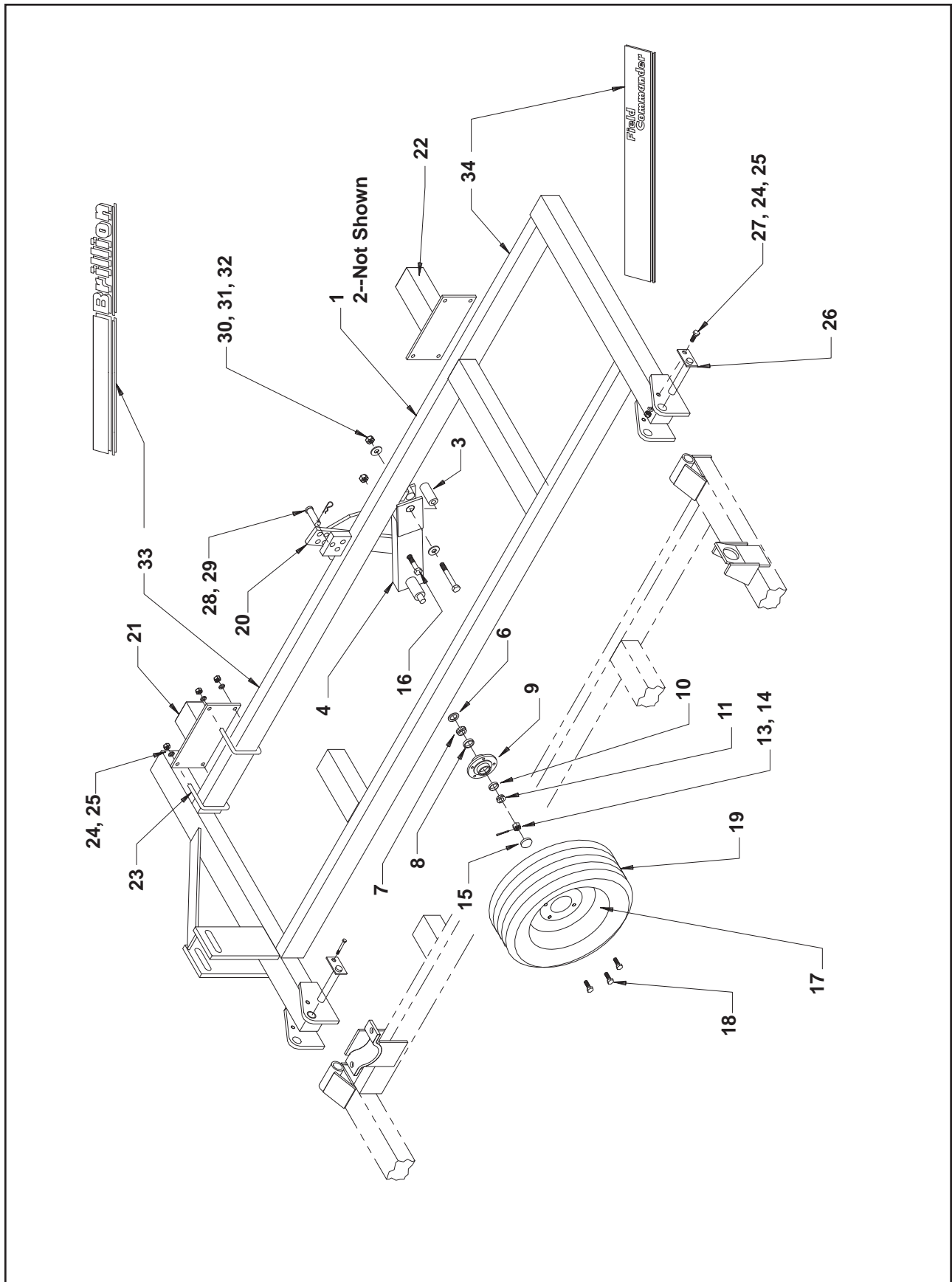


CENTER ROCKSHAFT & LEVELING LINKAGE				
Index No.	Part No.	Description	No. Req'd	Weight
1	2K171	Link	1	70
2	2K708	Brace Rod Assembly (made from 3, 4, 5, 32 & 40)	1	39
3	2K709	Brace Rod	1	30
4	2J765	Rod Screw (R H)	1	5
5	2K710	Rod Screw (L H)	1	4
6	9D923	Grease Fitting	2	
7	2K225	Center Axle Assembly (page 10 for components)	1	425
8	2K088	Hydraulic Cylinder, 4 x 8 (HFC 20 thru 31)	2	42
	5J280	Hydraulic Cylinder, 3 x 8 (HFC 16 thru 19)	2	26
9	2K255	Anchor Brace	2	27
10	6J649	Transport Lock	2	4
11	9D293	Pin, 1 x 8 1/4	1	2
12	2D894	Roll Pin, 1/4 x 2	6	
13	1C871	Flat Washer, 1" SAE	12	
14	8J130	Pin, 1 x 6 7/8	2	2
15	2K173	Rocker Arm	2	7
16	9D509	Machine Bolt, 3/4-10 NC x 6 1/2, Gr. 5	1	1
17	6C729	Locknut, 3/4-10 NC Hex	1	
18	1C133	Flat Washer, 3/4 Std.	2	
19	2K254	Bearing Half	4	5
20	1D424	Cap Screw, 3/4-10 NC x 2	8	
21	1C211	Lock Washer, 3/4 Reg.	8	
22	1C210	Nut, 3/4-10 NC	8	
23	3C142	Grease fitting	6	
24	2K259	Adjust Tube	2	11
25	8D590	Adjust Handle	3	1
26	4J410	Roll Pin, 3/8 x 3	2	
27	7C940	Roll Pin, 3/16 x 7/8	6	
28	2D799	Clevis Pin, 1 x 3	2	1
29	6C468	Cotter Pin, 3/16 x 2	2	
30	3C335	Clevis Pin, 1/2 x 3 3/16	2	1
31	4C856	Hairpin Clip	2	
32	1D604	Roll Pin, 3/16 x 1 1/2	4	
33	9J399	Bushing, 1 1/4 OD x 9/16" long	2	
34	3K226	Collar	2	1
35	3K228	Machinery Bushing, 3 1/2 O.D. x 10 Ga.	8	
36	3K229	Bushing	6	
37	3K342	Scale	2	
	6K214	Scale (Bent)	2	
38	3C998	Self-Tapping Screw #8-32 x 1/2	4	
39	6K215	Lock	2	1
40	6K213	Lock	1	4.5



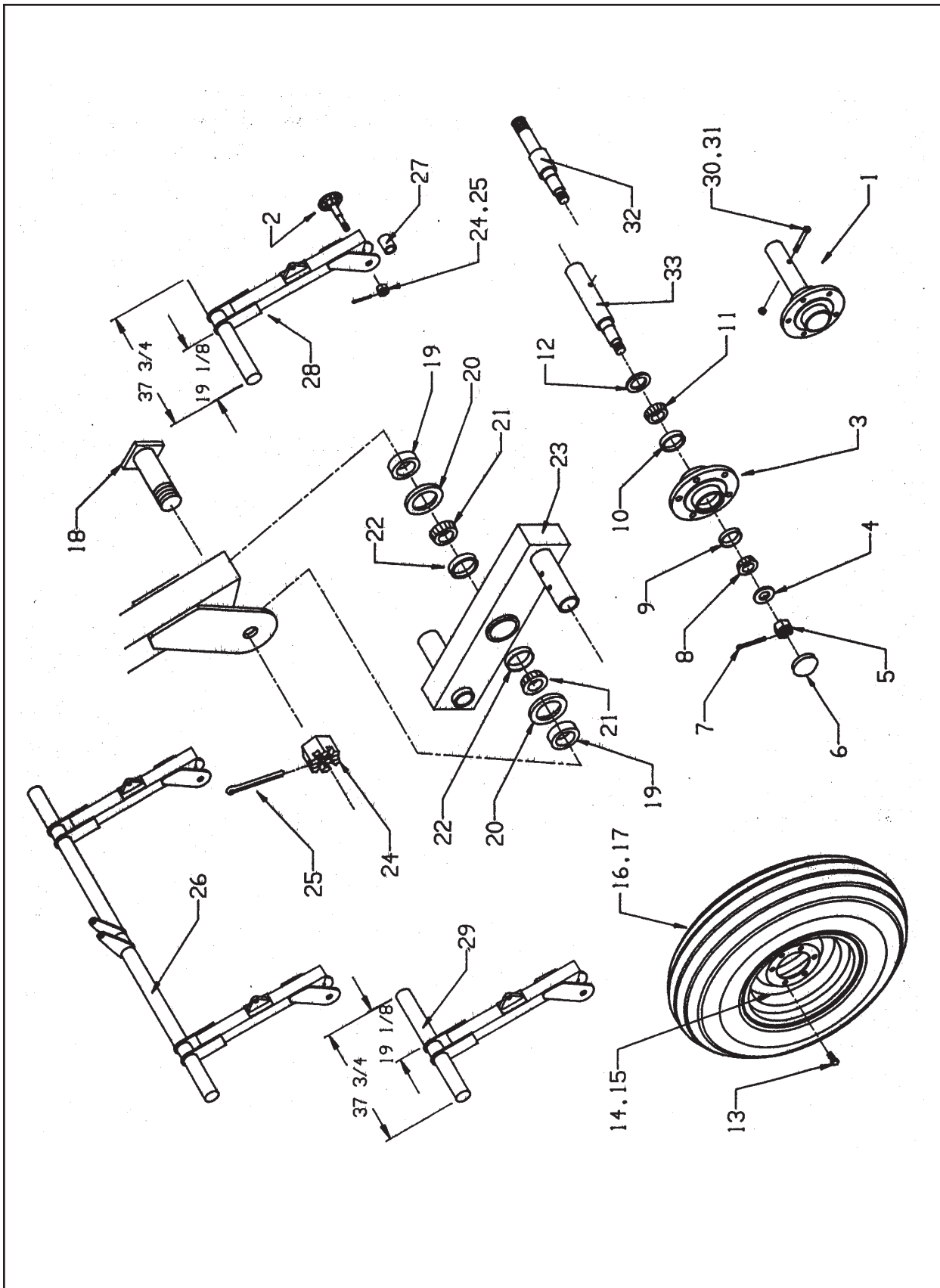
WINGS AND WING ROCKSHAFTS
(20 THROUGH 31 FOOT WIDE MACHINES)

Index No.	Part No.	Description	No. Req'd	Weight
1	2K734	Hub & Spindle for single wheel (see page 10)	2	18
2	2K241	Hub & Spindle for tandems (pg 10 for components)	4	16
3	2K255	Anchor Brace	2	27
4	2K251	5" Shank Mount	2	8
5	5J915	U-bolt, 1/2-13 x 4 x 3 1/4" deep	8	1
6	1C390	Nut, 1/2-13 NC Hex	52	
7	1C109	Lock Washer, 1/2 Reg.	52	
8	2K252	11" Shank Mount	2	13
9	2K177	Wing, Left (HFC 20 thru 23)	1	545
10	2K179	Wing, Left (HFC 24 thru 27)	1	455
11	2K181	Wing, Left (HFC 28 thru 31)	1	539
12	2K178	Wing, Right (HFC 20 thru 23)	1	545
13	2K180	Wing, Right (HFC 24 thru 27)	1	455
14	2K182	Wing, Right (HFC 28 thru 31)	1	539
15	2K206	Wing Extension, Left (HFC 24 thru 31)	1	251
16	2K207	Wing Extension, Right (HFC 24 thru 31)	1	251
17	2K735	Wing Axle, Left, single wheel (pg 10 for components)	1	120
18	2K226	Wing Axle, Left for tandems (pg 10 for components)	1	190
19	2K736	Wing Axle, Right, single wheel (pg 10 for components)	1	120
20	2K227	Wing Axle, Right, tandems (pg 10 for components)	1	190
21	2K087	Hydraulic Cylinder, 3 3/4 x 8	2	43
22	8C527	Cap Screw, 1/2-13 NC x 1 1/2, Gr. 5	20	
23	1D237	Cap Screw, 1/2-13 x 2, Gr. 5	16	
24	6D769	Cap Screw, 3/8-16 x 3, Gr. 5	4	
25	5C954	Locknut, 3/8-16 NC Hex	4	
26	2K259	Adjust Tube	2	11
27	8D590	Adjust Handle	2	1
28	4J410	Roll Pin, 3/8 x 3	2	
29	7C940	Roll Pin, 3/16 x 7/8	4	
30	9D923	Grease Fitting	2	
31	1D604	Roll Pin, 3/16 x 1 1/2	2	
32	2D799	Clevis Pin, 1 x 3	2	1
33	1C871	Flat Washer, 1" SAE	2	
34	6C468	Cotter Pin, 3/16 x 2	2	
35	2K254	Bearing Half	4	5
36	1D424	Cap Screw, 3/4 x 2, Gr. 5	8	
37	1C211	Lock Washer, 3/4 Reg.	8	
38	1C210	Nut, 3/4-10 NC Hex	8	
39	9D693	Grease Fitting	6	
40	4K037	Brillion Decal (Shown on Page 2)	2	
41	2J430	Reflective Decal, Red	2	
42	2J431	Reflective Decal, Amber	2	
43	2K243	Hinge Pin	4	3
44	3K226	Collar	2	1
45	3K228	Machinery Bushing, 3 1/2 O.D. x 10 Ga.	8	
46	3K229	Bushing	4	
47	3K342	Scale	2	
	6K214	Scale (Bent)	2	
48	3C998	Self-Tapping Screw #8-32 x 1/2	4	
49	4K038	Decal, Field Commander	2	-
50	6K215	Lock	2	1



WING COMPONENTS FOR 16 FT THRU 19 FOOT MACHINES

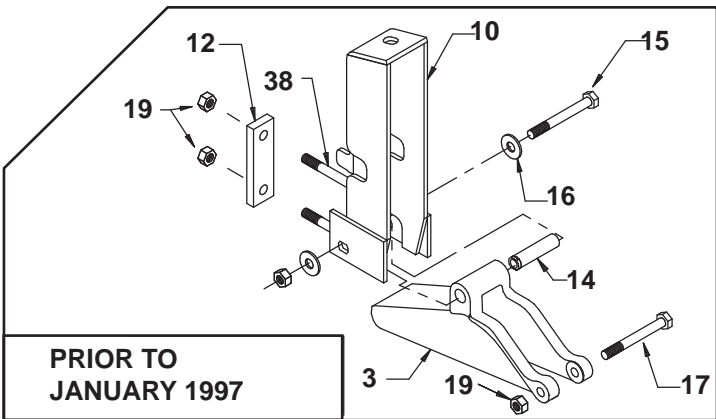
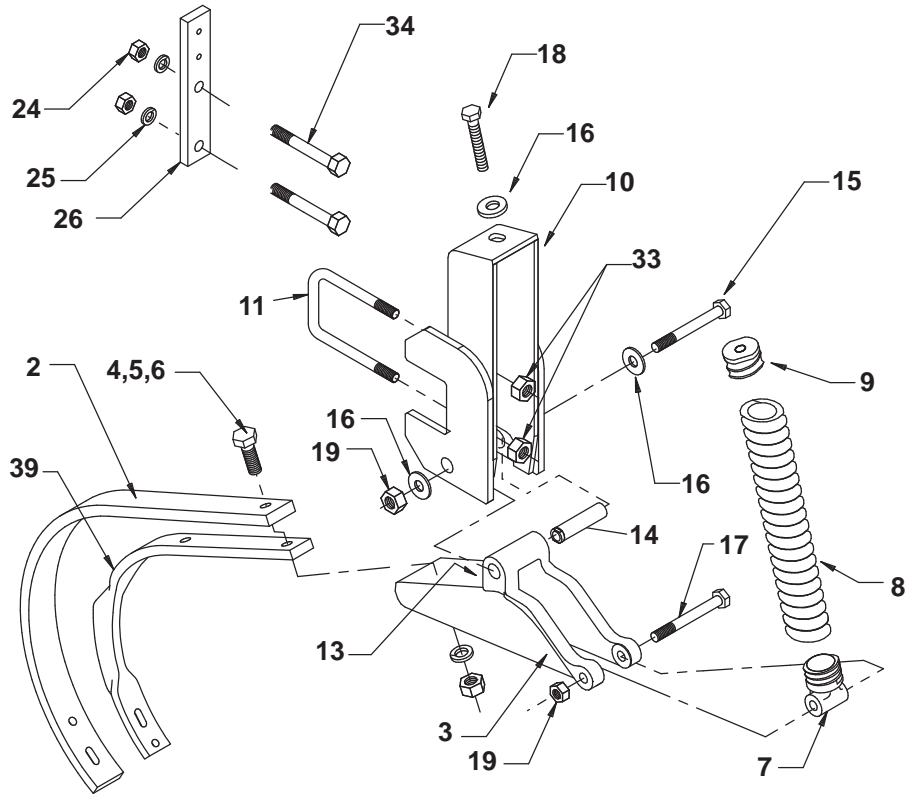
Index No.	Part No.	Description	No. Req'd	Weight
1	2K752	Wing, Left hand	1	340
2	2K753	Wing, Right hand	1	340
3	3K109	Bushing, 1 1/4 O.D. x 2 15/16" Long	2	
4	4k591	Wheel Arm, (items 5 thru 15)	2	28
5	1J399	Hub & Spindle	2	20
6	1D273	Seal	2	.2
7	5C480	Bearing Cone #LM48548	2	.3
8	5C479	Bearing Cup #LM48510	2	.2
9	1J390	Wheel Hub, 5 Bolt	2	6.3
10	5C911	Bearing Cone #LM11949	2	.3
11	5C912	Bearing Cup #LM11910	2	.2
12	--	-----	--	--
13	3C173	Slotted Nut, 3/4-16	2	
14	3C350	Cotter Pin, 5/32 dia. x 1	2	
15	1J463	Hub Cap	2	
16	6D741	Cap Screw, 3/4-10 x 4" Gr 5	2	
17	4C129	Wheel, 15 x 5, 5 bolt (Standard)	2	16
	6J189	Wheel, 15 x8, 5 bolt (Optional)	2	16
18	5C100	Wheel Bolt	10	.1
19	8J794	Tire 7.60-15 (Standard)	2	27
	8J795	Tire 9.5-15 (Optional)	2	33
20	2K891	Adjustment Bar	2	15
21	2K251	5" Shank Mount (HFC 18 & HFC 19)	2	8
22	2K252	11" Shank Mount (HFC 19)	2	13
23	5J915	U-Bolt, 1/2 x 4 9/16 x 3 1/4"dp	8	1
24	1C109	Lock Washer, 1/2 Reg.	20	
25	1C390	Nut, 1/2-13 NC Hex	20	
26	2K243	Hinge Pin	4	3
27	8C527	Cap Screw, 1/2-13 NC x 1 1/2, Gr. 5	4	.2
28	2J997	Clevis Pin, 3/4 x 2 3/4	4	.3
29	4C856	Hairpin Cotter	4	-
30	2D488	Cap Screw, 3/4-10 NC x 5, Gr. 5	2	.1
31	1C133	Washer, 3/4"	4	-
32	6C729	Locknut, 3/4-10 NC Hex Stover		
33	4K036	Brillion Decal	2	-
34	4K038	Decal, Field Commander	2	-



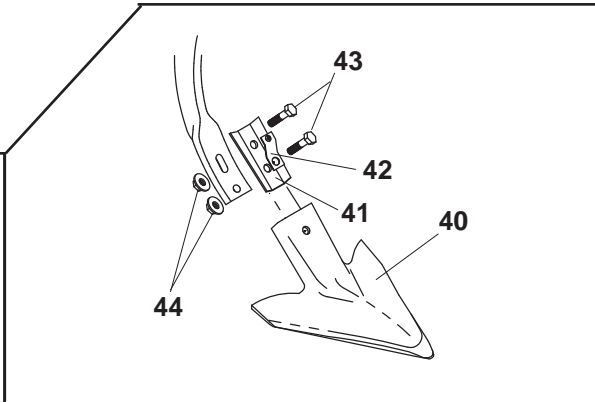
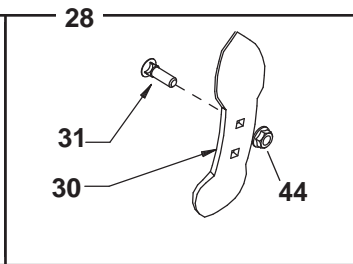
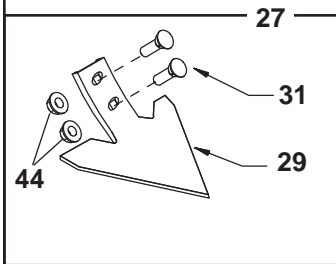
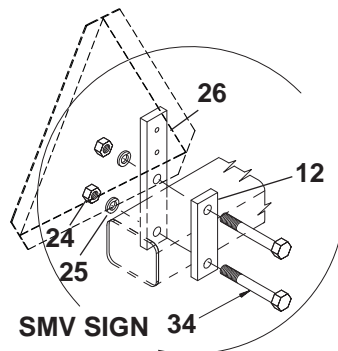
ROCKSHAFTS AND COMPONENTS

Index No.	Part No.	Description	No. Req'd		Weight
			HFC	HFCT	
1	2K241	Hub & Spindle for tandem, (items 3-13 & 33)	4	8	18
2	2K734	Hub & spindle for single wheels, complete	2	-	20
3	6D336	Wheel Hub, 6-Bolt	6	8	10
4	1C871	Flat Washer 1" SAE	6	8	
5	6D284	Slotted Nut, 1-14 NF	6	8	
6	6D337	Hub Cap	6	8	
7	1C788	Cotter Pin, 3/16 x 1 1/2	6	8	
8	5C913	Bearing Cone LM 67048	6	8	
9	5C914	Bearing Cup LM 67010	6	8	
10	5C479	Bearing Cup LM 48510	6	8	
11	5C480	Bearing Cone LM 48548	6	8	
12	6D338	Seal	6	8	
13	5C100	Wheel Bolt	36	48	
14	6D311	Wheel, 15 x 6LB--use with item 16	-	4	20
15	6D312	Wheel, 15 x 8LB--use with item 17	6	4	24
16	8J794	Tire, 7.60 x 15 6 Ply--(4) ON WINGS WITH TANDEMS	-	4	27
17	8J795	Tire, 9.5L x 15 6 Ply--(4) ON CENTER, (2) ON WINGS WITH SINGLE TIRES. SEE PAGE 9 FOR 16' THRU 19' WIDE MACHINES.	6	4	33
18	2K229	Axle Pin	2	4	3
19	2K228	Spacer	4	8	
20	6C334	Seal	4	8	
21	1D808	Bearing Cone	4	8	
22	1D807	Bearing Cup	4	8	
23	2K220	Walking Beam	2	4	48
24	2J716	Slotted Nut, 1 1/2-6 NC Hex	2	4	
25	6D049	Cotter Pin 1/4 x 2 1/2	2	4	
26	2K208	Rockshaft, Center	1	1	322
27	2K737	Spacer (used with 2K734 Hub & spindle)	2	-	1
28	2K209	Rockshaft, Left (HFC 20 thru HFC 31)	1	1	133
29	2K210	Rockshaft, Right (HFC 20 thru HFC 31)	1	1	133
30	6D769	Cap Screw, 3/8-16 NC x 3	4	8	
31	5C954	Locknut, 3/8-16 NC Hex	4	8	
32	2K738	Spindle for single wheel axles	2	-	9
33	2K242	Spindle for tandem axles	4	8	7

SPRING SHANK



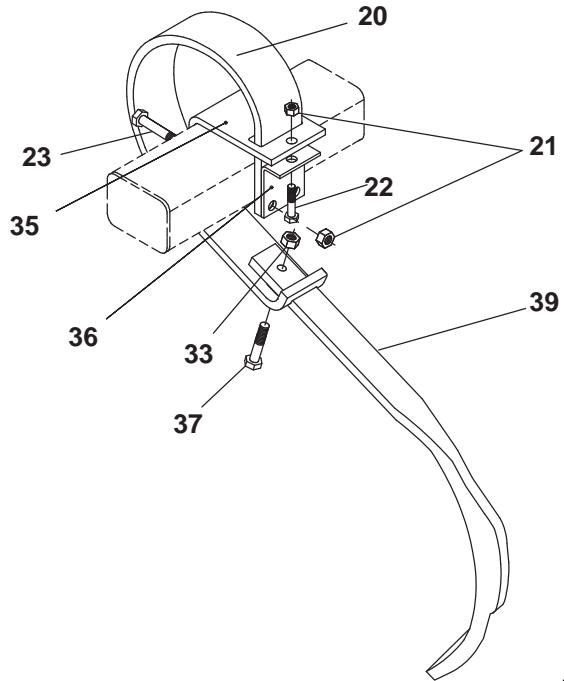
**PRIOR TO
JANUARY 1997**



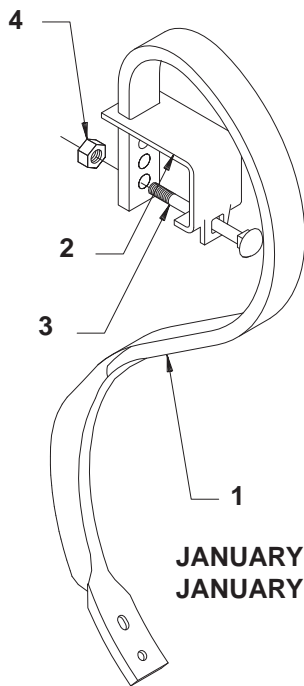
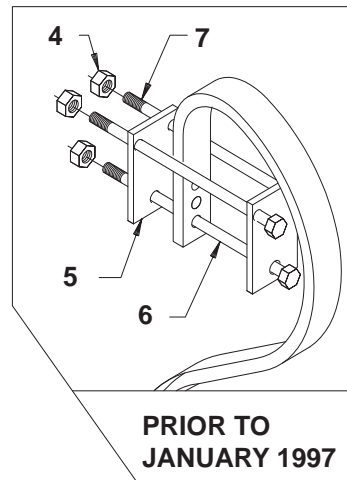
SPRING SHANK ASSEMBLY

Index No.	Part No.	Description	Qty.
1	4K816	Spring Shank Assembly (w/ edge-bent shank: items 39 & 3-19)	1
	4K165	Spring Shank Assembly, (items 2-19)	1
2	1K240	Shank	1
3	1K223	Shank Holder (used prior to Jan., 1997-with 3/4" dia. bushing)	1
	4K817	Shank Holder (used with item #39 - 5/8" thk edge-bent shank)	1
4	1-654-010059-04	Cap Screw, 5/8-11 NC x 1 3/4, Gr. 5	1
5	1-861-010034-15	Lock Washer, 5/8 Reg.	1
6	1-512-010007-11	Nut, 5/8-11 NC Hex	1
7	8D220	Spring Plug	1
8	1K236	Spring	1
9	8D221	Spring Plug	1
10	4K168	Spring Holder	1
	1K206	Spring Holder (Prior to Jan., 1997)	1
11	4J411	U-bolt, 5/8-11 Thrd.	1
12	5J358	Strap (also see item 26)	1
13	1C023	Grease Fitting	1
14	7K530	Bushing (1" dia.) (after November 2001)	1
	4K167	Bushing used between 1K238 and 7K530)	1
	1K238	Bushing (3/4" dia. - used prior to Jan., 1997)	1
15	1-654-010055-15	Cap Screw, 1/2-13 NC x 5", Gr. 5	1
	3D751	Capscrew, 1/2-13 NC x 4 1/2" Gr. 5 (Prior to Jan., 1997)	1
16	5J492	Flat Washer, 1/2 3/16" Thick	3
	5J492	Flat Washer, 1/2" Std. (Prior to Jan., 1997)	3
17	1-654-010055-13	Cap Screw, 1/2-13 NC x 4, Gr. 5	1
18	116716	Cap Screw, 1/2-13 NC x 4 FULL THREAD	1
19	1-512-010005-09	Locknut, 1/2-13 NC Hex	2
20 -23	--	----	
24	1C390	Nut, 1/2-13 NC Reg Hex	2
25	1C109	Lockwasher, 1/2" Std.	2
26	2K306	SMV Strap (one/machine --SMV sign shown for ref., not incl.)	1
27	3K425	7" Ultra-wing Sweep Assembly (items 29, 31, & 32)	1
28	4J801	Heavy Duty Cultivator Point Assembly (items 30-32)	1
29	3K437	Ultra-wing Sweep (43° x 7")	1
30	2J605	Heavy Duty Cultivator Point	1
31	8D301	Plow Bolt, 7/16-14 x 1 1/2 #3 Head	2
32	--	---	-
33	1-512-010005-13	Locknut, 5/8-11 NC Hex	3
34	1C675	Machine Bolt, 1/2-13 x 6" Gr 5	2
35 -37	--	-----	
38	2J975	Carriage Bolt, 1/2-13NC x 5 1/2" Gr. 5	
39	4K497	Edge-Bent Shank	1
--	6K262	Quick-Change Bracket Assembly (items 41-44)	1
40	6K265	7" Quick Change Ultra Point	1
41	6K263	Bracket	1
42	6K264	Spring Clip	1
43	4J916	Capscrew, 7/16-14 NC x 1 1/2", gr. 5	2
44	4K551	Self-Locking Flange Nut, 7/16-14 NC	2

2-PIECE S-TINE

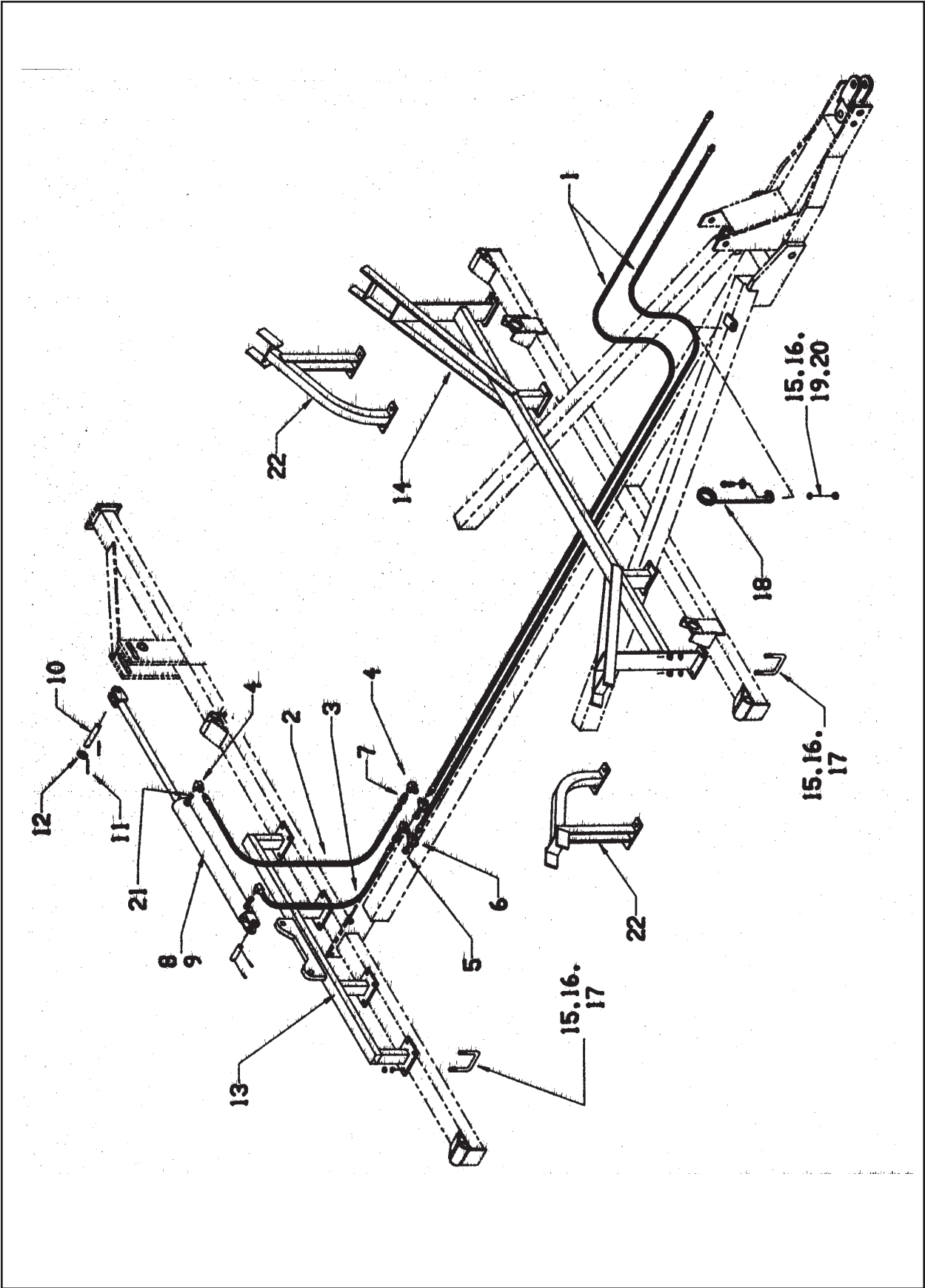


S-TINE



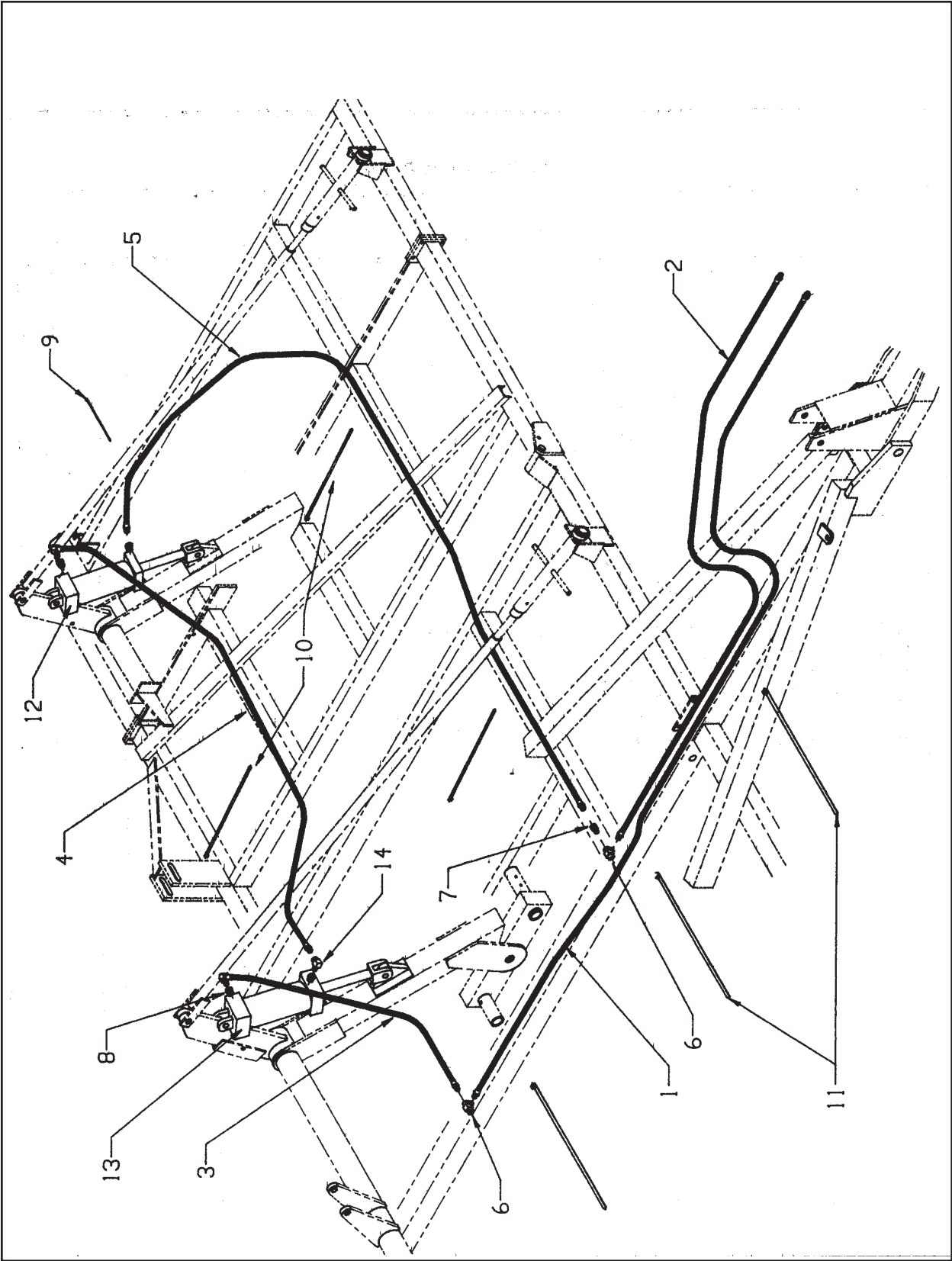
**JANUARY 1997-
JANUARY 1998**

S-TINE SHANK ASSEMBLY				
Index No.	Part No.	Description	No. Req'd	Weight
<u>2-PIECE S-TINE SHANK ASSEMBLY</u>				
20	4K484	Ring (for 2-Piece Shank)	1	14
21	5C392	Locknut, 1/2-13 NC Hex	2	
22	1D237	Capscrew, 1/2" x 2" Gr. 5	1	--
23	1C675	Bolt, 1/2" x 6" Gr. 5	2	--
33	5C461	Locknut, 5/8-11 NC Hex	3	
34	1C675	Machine Bolt, 1/2-13 x 6" Gr 5	2	
35	4K638	Clamp	1	4.25
36	4K637	Clip	1	.75
37	5C460	Capscrew, 5/8" x 2" Gr. 5	1	--
38	2J975	Carriage Bolt, 1/2-13NC x 5 1/2" Gr. 5 (Prior to Jan1, 1997)		
39	4K497	Edge-Bent Shank	1	12
<u>S-TINE SHANK ASSEMBLY Prior to Jan. 1998</u>				
1	1K249	S-Tine	1	14
2	4K498	S-Tine Clamp	1	1
3	4K499	Carriage Bolt, 5/8-11 NC x 6" Gr. 5	1	
4	5C461	Locknut, 5/8-11 NC Hex	1	
5	2K305	Plate (Prior to Jan., 1997)	2	1.0
6	1C675	Capscrew, 1/2-13 NC x 6" Gr.5 (Prior to Jan., 1997)	2	
7	6D301	Capscrew, 5/8-11 NC x 6 1/2" Gr. 5 (Prior to Jan., 1997)	1	



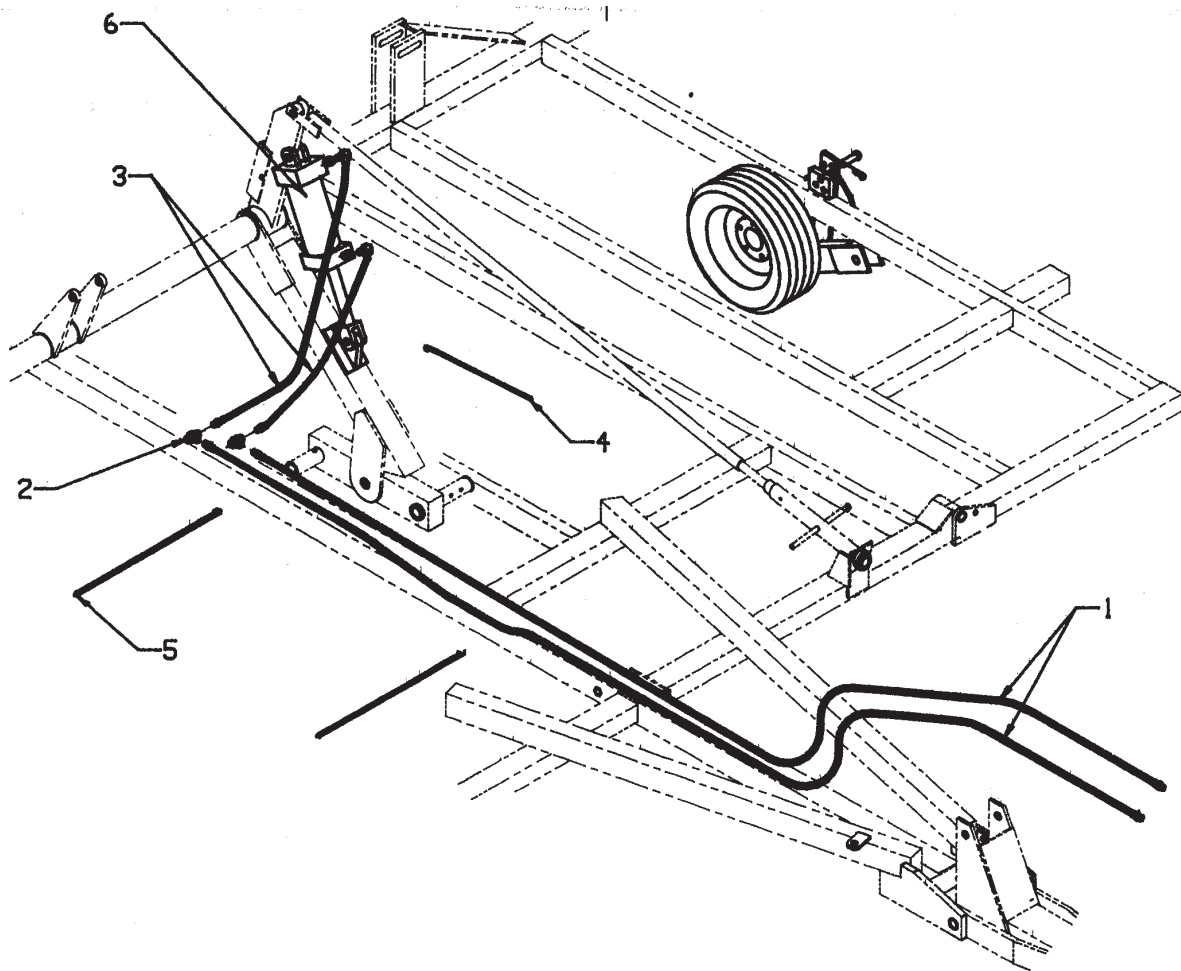
WING LIFT HYDRAULICS

<u>Index No.</u>	<u>Part No.</u>	<u>Description</u>	<u>No. Req'd</u>	<u>Weight</u>
1	7J346	Hydraulic Hose, 251" long	2	6
2	4D980	Hydraulic Hose, 66" long with 1 swivel fitting	2	2
3	3J543	Hydraulic Hose, 42" long with 1 90 degree swivel	2	2
4	2J170	Hydraulic Fitting, 90 Degree Rigid, 1/2 NPTF	6	
5	5J234	Hydraulic Fitting, Pipe Plug, 1/2 NPTF	2	
6	6D147	Hydraulic Fitting, Cross, 1/2 NPTF	2	
7	6D716	Flow Restrictor, 1/16" Orifice	4	
8	6J216	Hydraulic Cylinder, 3 x 30 (HFC 16 thru 23)	2	62
9	5J830	Hydraulic Cylinder, 4 x 30 (HFC 24 thru 31)	2	77
10	9J695	Pin, 1 x 6	2	1
11	4C858	Roll Pin, 5/16 x 2	4	
12	1C871	Flat Washer, 1" SAE	10	
13	2K232	Cylinder Anchor	1	60
14	2K236	Wing Brace	1	92
15	1B166	Lock Washer, 5/8 Reg.	25	
16	1C392	Nut, 5/8-11 NC	25	
17	5J914	U-bolt, 5/8-11 NC x 4 x 4 1/2 deep	12	
18	6D333	Hose Support	1	2
19	5C460	Cap Screw, 5/8-11 NC x 2	1	
20	1C122	Flat Washer, 5/8 Std.	1	
21	7J026	O-ring adaptor (packed with cylinders)	4	
22	2K887	Wing Brace	2	27



GAGE WHEEL HYDRAULICS-HFC 20 THROUGH HFC 31

<u>Index No.</u>	<u>Part No.</u>	<u>Description</u>	<u>No. Req'd</u>	<u>Weight</u>
1	7J346	Hydraulic Hose, 251" long	1	6
2	6D725	Hydraulic Hose, 180" long	1	5
3	2D448	Hydraulic Hose, 48" long with (1) 90 degree swivel)	2	3
4	4J539	Hydraulic Hose, 84" long (90 swiv) HFC 20 thru 23	2	4
	4J829	Hydraulic Hose, 116" long (90 swiv) HFC 24 thru 27	2	4
	4J832	Hydraulic Hose, 136" long (90 swiv) HFC 28 thru 31	2	5
5	3J547	Hydraulic Hose, 160" long HFC 20 thru 23	2	5
	3J548	Hydraulic Hose, 200" long HFC 24 thru 27	2	6
	7J346	Hydraulic Hose, 251" long HFC 28 thru 31	2	6
6	4D982	Hydraulic Fitting, Tee, 1/2 NPTF	2	
7	9J212	Hydraulic Fitting, Straight Swivel	2	
8	7J026	O-ring adaptor (packed with cylinders)	8	
9	9D674	Hose Tie, 8 1/2" long	4	
10	9D851	Hose Tie, 20" long (HFC 20 thru HFC 23)	4	
		Hose Tie, 20" long (HFC 24 thru HFC 31)	6	
11	3J615	Hose Tie, 28" long	3	
12	2K087	Hydraulic Cylinder, 3 3/4 x 8	2	
13	2K088	Hydraulic Cylinder, 4 x 8	2	
14	2J170	Hydraulic Fitting, 90 Degree Rigid	2	



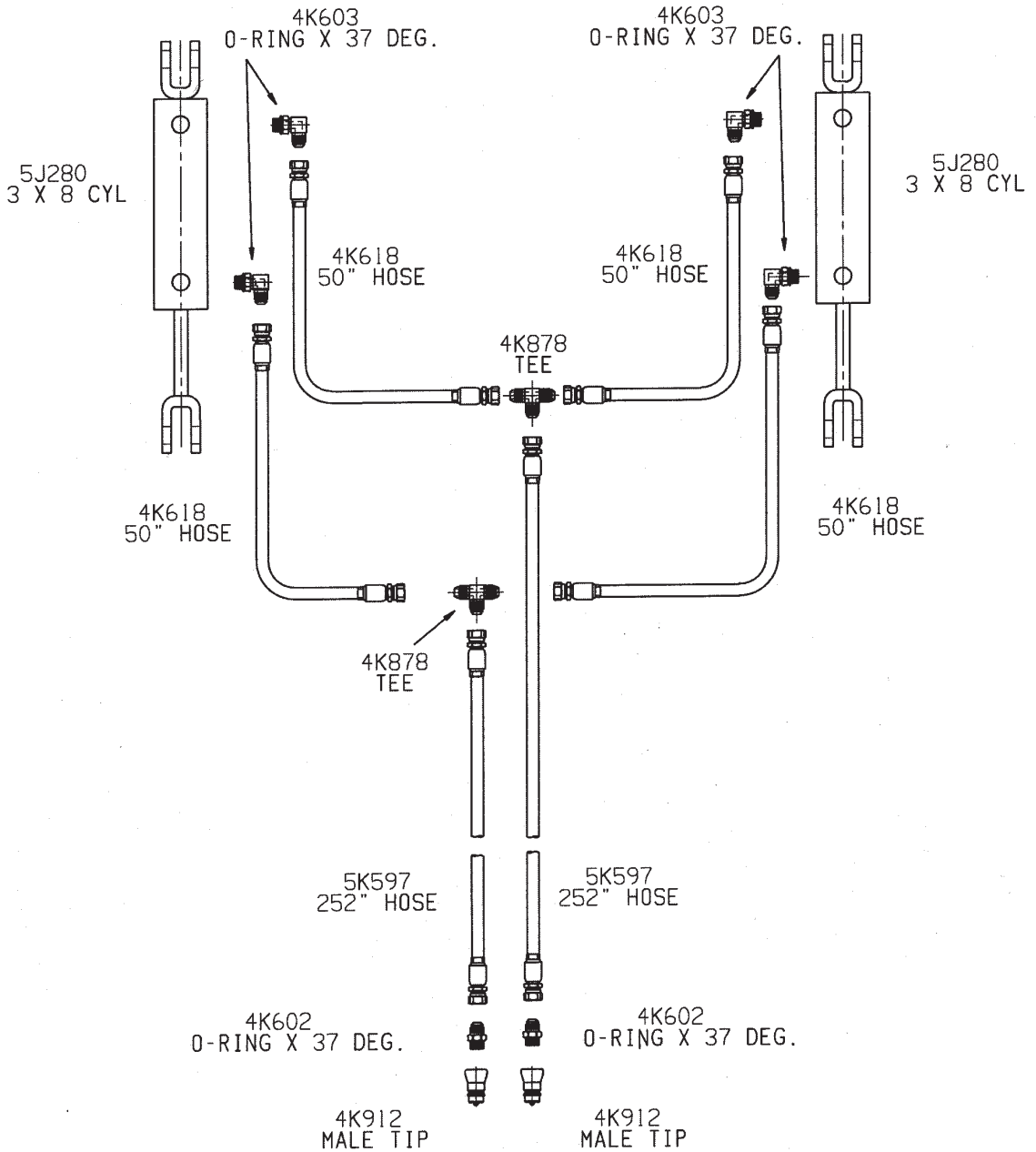
GAGE WHEEL HYDRAULICS
(16 THROUGH 19 FOOT WIDE MACHINES)

Index No.	Part No.	Description	No. Req'd	Weight
1	7J346	Hydraulic Hose, 251" long	2	6
2	4D982	Hydraulic Fitting, Tee, 1/2 NPTF	2	.2
3	2D448	Hydraulic Hose, 48" with (1) 90 degree swivel	4	3
4	9D674	Hose tie, 8 1/2" long	2	
5	3J615	Hose tie, 28" long	3	
6	5J280	Hydraulic Cylinder, 3 x 8	2	28

GAGE WHEEL HYDRAULICS HFC 11'-19'

FOR MACHINES WITH 3/8 JIC HOSES

DO NOT USE MALE O-RING X FEMALE PIPE ADAPTERS
WHICH MAY BE INCLUDED

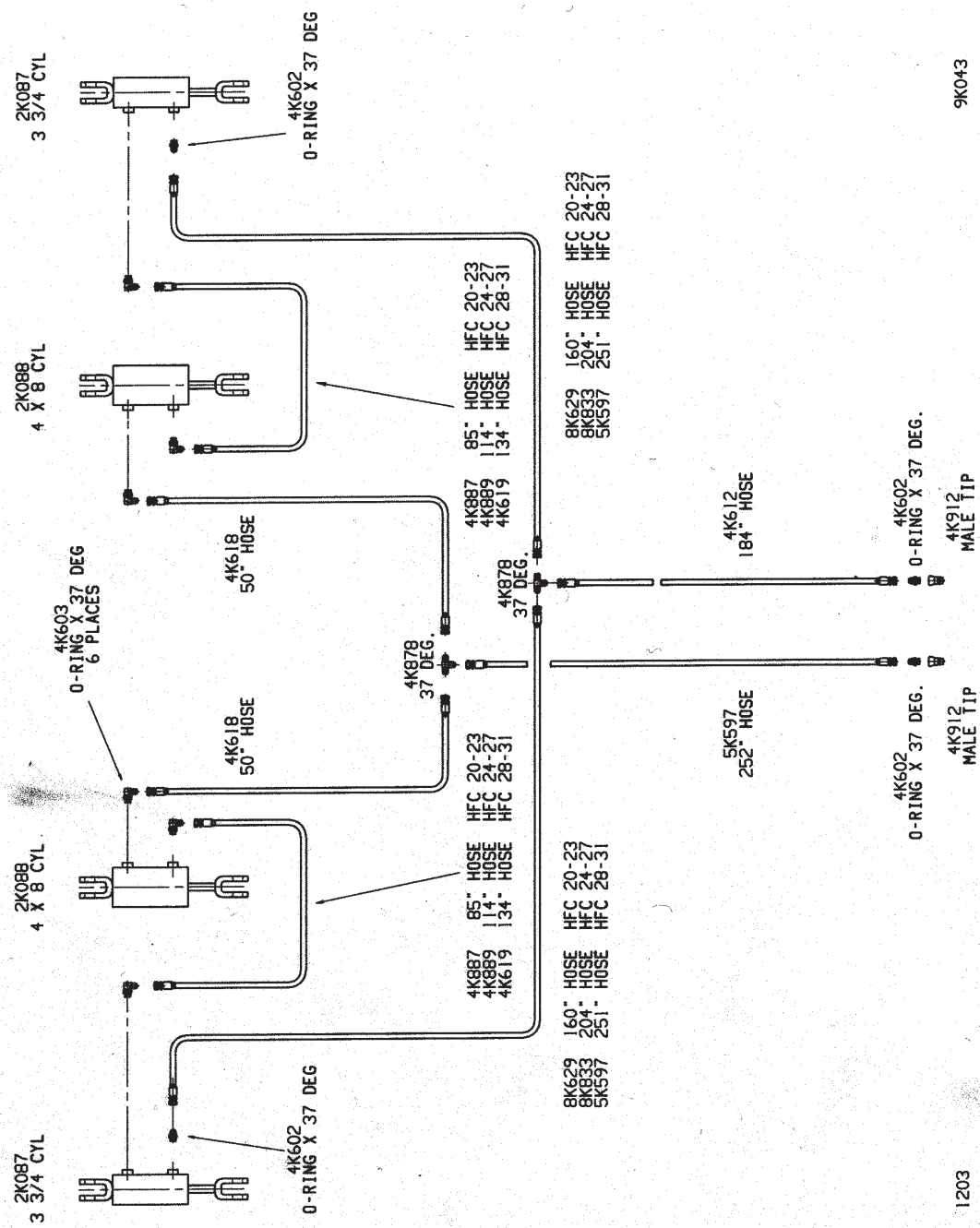


1203

8K939

GAGE WHEEL HYDRAULICS
HFC 20-31 FIELD CULTIVATOR

FOR MACHINES WITH 3/8 JIC HOSES
 DO NOT USE MALE O-RING X FEMALE PIPE ADAPTERS
 WHICH MAY BE INCLUDED

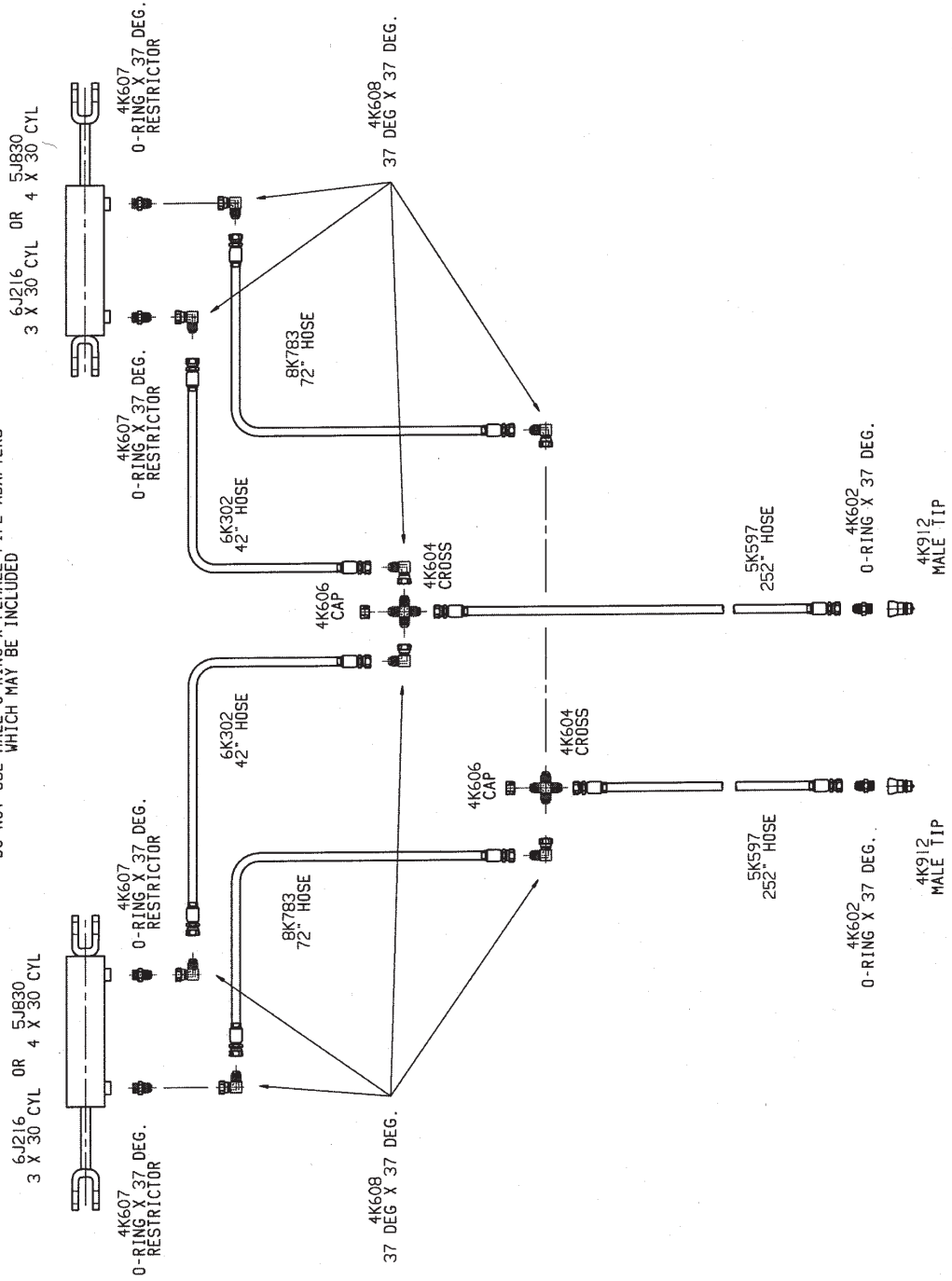


1203

9K043

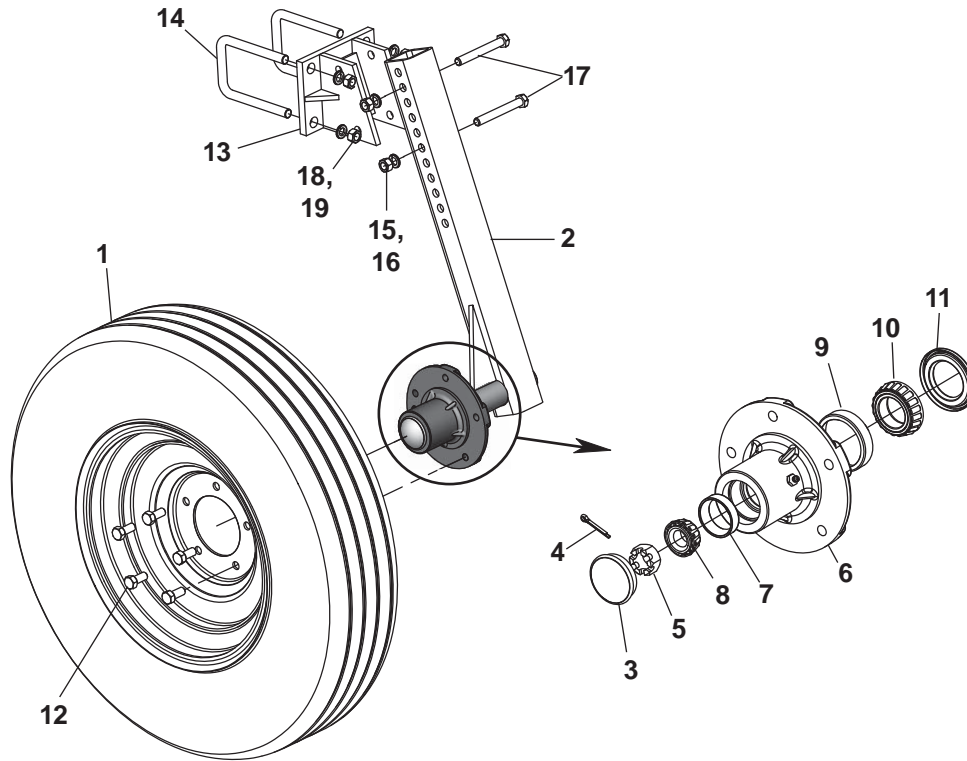
WING FOLD HYDRAULICS HFC 16'-31"

FOR MACHINES WITH 3/8 JIC HOSES
DO NOT USE MALE O-RING X FEMALE PIPE ADAPTERS
WHICH MAY BE INCLUDED



8K940

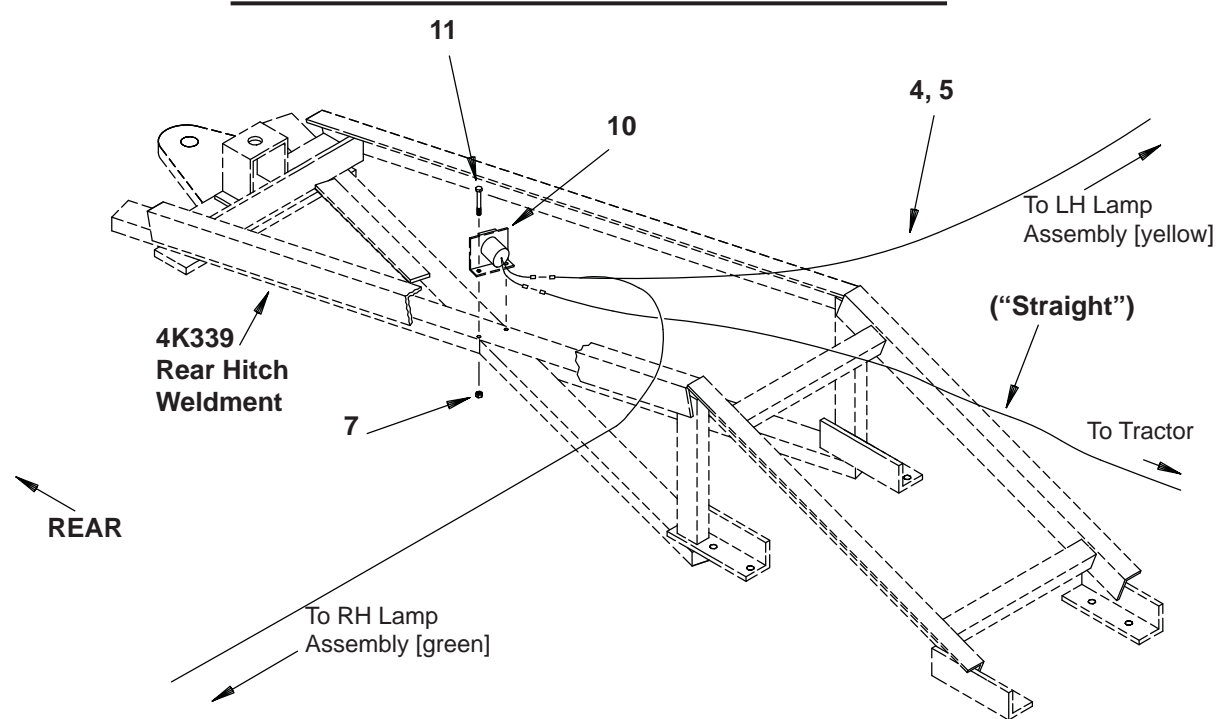
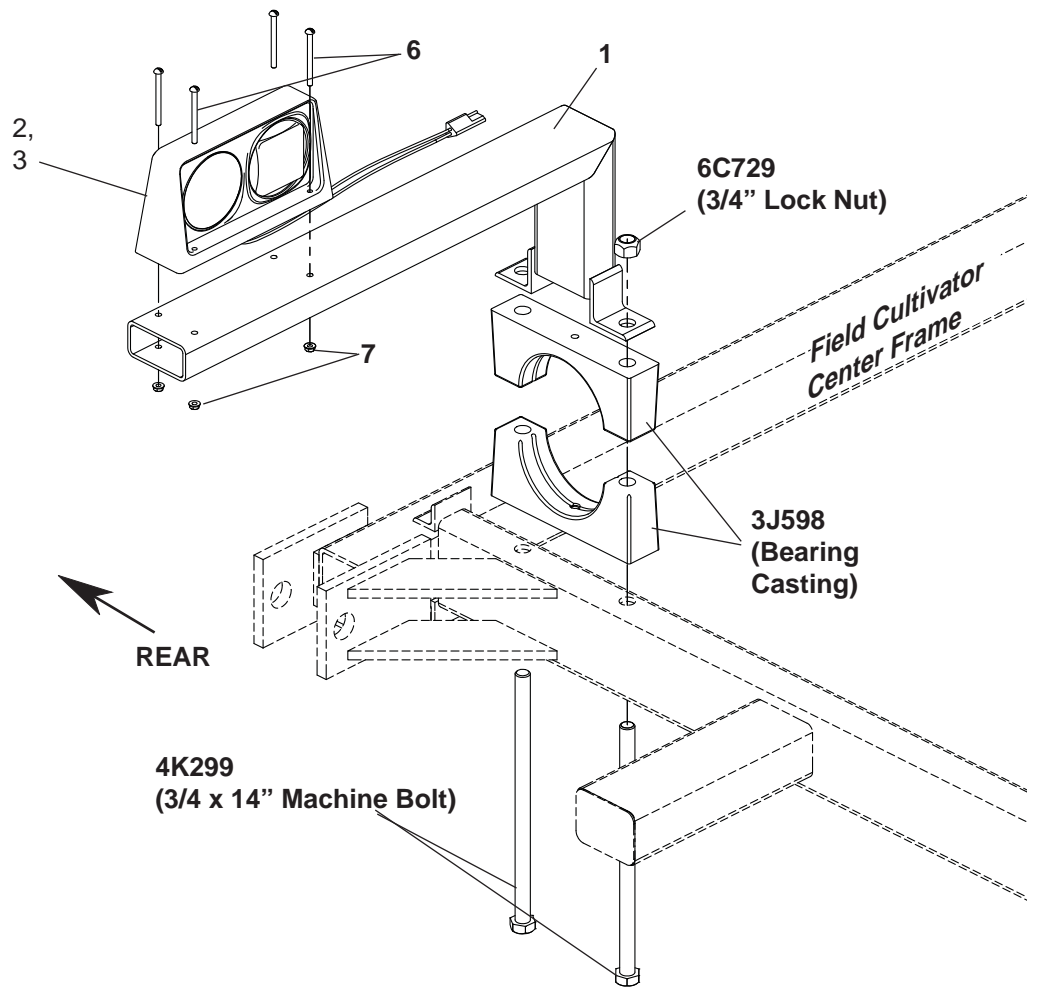
1203



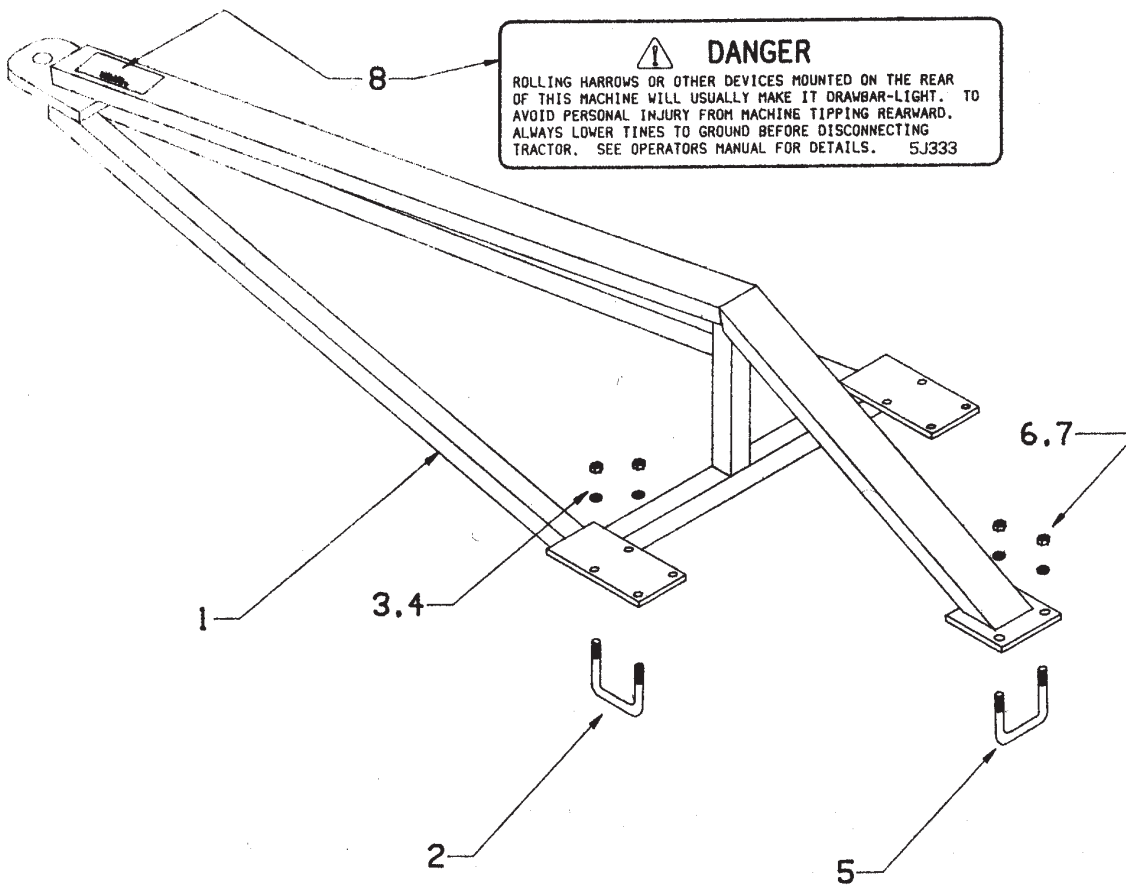
2K279 - WING STABILIZER/GAGE WHEEL KIT

<u>Index No.</u>	<u>Part No.</u>	<u>Description</u>	<u>No. Req'd</u>	<u>Weight</u>
1	2K277	Wheel and Tire	2	13
2	2K273	Wheel Arm w/ Hubs --items 2-11	2	12
3	1J463	Hub Cap	2	
4	3C350	Cotter pin	2	
5	3C173	Slotted Nut, 3/4-16	2	
6	1J390	Hub, 5 bolt	2	8
7	5C912	Bearing Cup	2	
8	5C911	Bearing Cone	2	
9	5C479	Bearing Cup	2	
10	5C480	Bearing Cone	2	
11	1D273	Seal	2	
12	5C100	Wheel Bolt	10	
13	2K270	Gage Wheel Bracket	2	10
14	6J050	U-Bolt, 5/8-11 x 3 x 5 5/16" dp	4	1
15	1B166	Lockwasher, 5/8	8	
16	1C392	Nut, 5/8-11	8	
17	5D335	Capscrew, 1/2 x 4	4	
18	1C109	Lockwasher, 1/2	4	
19	1C390	Nut, 1/2-13	4	
20	2K744	Wheel	2	
21	2K745	Tire	2	

This Page Blank Intentionally

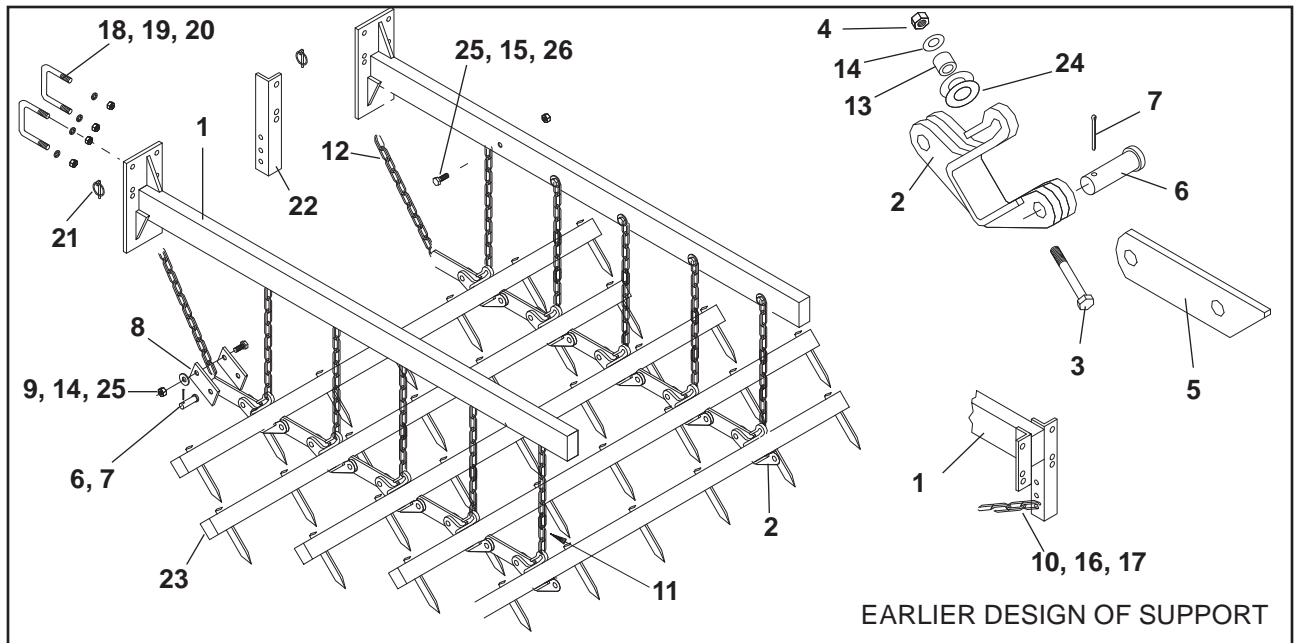


#4K820 WARNING LIGHT KIT			
REF No.	PART NO.	PART NAME	QTY.
1	8K383	BRACKET WELDMENT	2
2	4K772	DUAL LAMP, L.H.	1
3	4K773	DUAL LAMP, R.H.	1
4	4K828	WISHBONE HARNESS, 15'	1
5	4K829	WISHBONE HARNESS, 35'	1
6	4K751	MACHINE SCREW, 1/4" x 3"	4
7	6J150	FLANGE LOCK NUT, 1/4"	8
8	9D674	PLASTIC CABLE TIE, 8 1/2"	10
9	9D851	PLACTIC CABLE TIE, 20"	4
10	4K826	TANDEM HAUL ADAPTER	1
11	2K501	CAPSCREW, 1/4" x 2 1/2"	4
12	4K827	INSTRUCTION SHEET	1



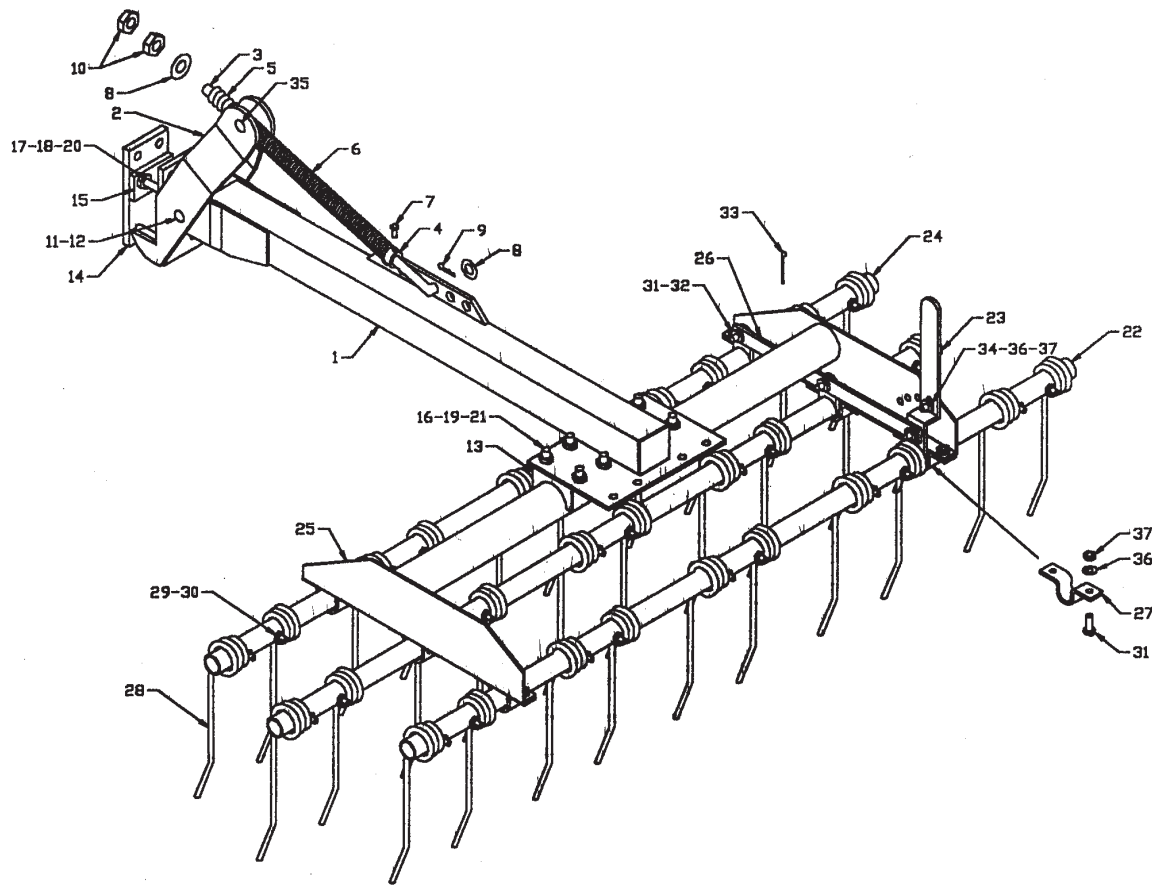
2K280 - REAR HITCH KIT

<u>Index No.</u>	<u>Part No.</u>	<u>Description</u>	<u>No. Req'd</u>	<u>Weight</u>
1	2K261	Rear Hitch	1	144
2	5J914	U-Bolt	4	1
3	1B166	Lockwasher, 5/8	8	
4	1C392	Nut, 5/8-11	8	
5	3J451	U-Bolt	1	1
6	1C211	Lockwasher, 3/4	2	
7	1C210	Nut, 3/4-10	2	
8	5J333	Decal, Danger	1	-

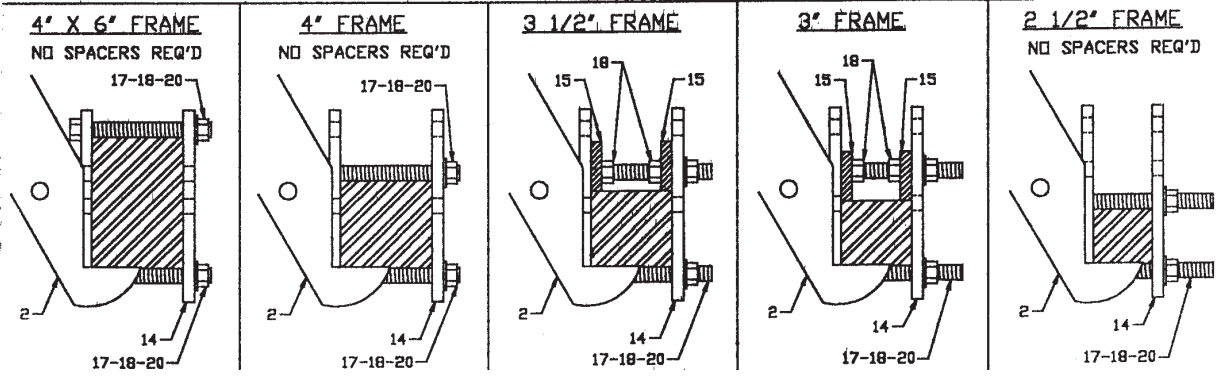


DRAG KIT COMPONENTS

Index No.	Part No.	Description	Weight
1	2K824	Drag Support	41
2	3K270	Drag Clamp	2
3	2K702	Cap Screw, 3/8 x 4	-
4	5C954	Locknut, 3/8-16 Hex	-
5	3K286	Link	1.5
6	3K287	Clevis Pin, 5/8 x 1 1/2"	.5
7	3C350	Cotter Pin, 5/32 x 1	-
8	3K288	Strap	.5
9	4K664	Cap Screw, 7/16 x 1 3/4	-
10	5C392	Locknut, 1/2-13 Hex	-
11	2K828	Chain, Short	1.2
12	2K829	Chain, Long	2.2
13	3K291	Sleeve	.2
14	1C182	Flat Washer, 3/8	-
15	6D965	Capscrew, 7/16 x 3 1/2	.3
16	1C267	Cap Screw, 1.2 x 1 1/2	.1
17	9C134	Flat Washer, 1/2" SAE	-
18	6J050	U-Bolt, 5/8 x 3 11/16 x 5 5/16 Dp	.8
19	1B166	Lockwasher, 5/8	-
20	1C392	Nut, 5/8-11 Hex	-
21	2J784	Klik Pin	-
22	2K826	Draft Angle	6
23	6J587	Spike Bar--50" (5 spikes)	25
	7J072	Spike Bar--60" (6 spikes)	31
	6J588	Spike Bar--70" (7 spikes)	36
	7J077	Spike Bar--80" (8 spikes)	42
	6J589	Spike Bar--90" (9 spikes)	47
	6J590	Spike Bar-100" (10 spikes)	53
	7J102	Spike Bar-110" (11 spikes)	58
	2K800	Spike Bar-120" (12 spikes)	64
	1K313	Spike Bar-130" (13 spikes)	72
24	1C122	Flat Washer, 5/8	-
25	1D014	Lock Nut, 7/16-14 Hex Stover	-
26	6D340	Flat Washer, 7/16" SAE	-

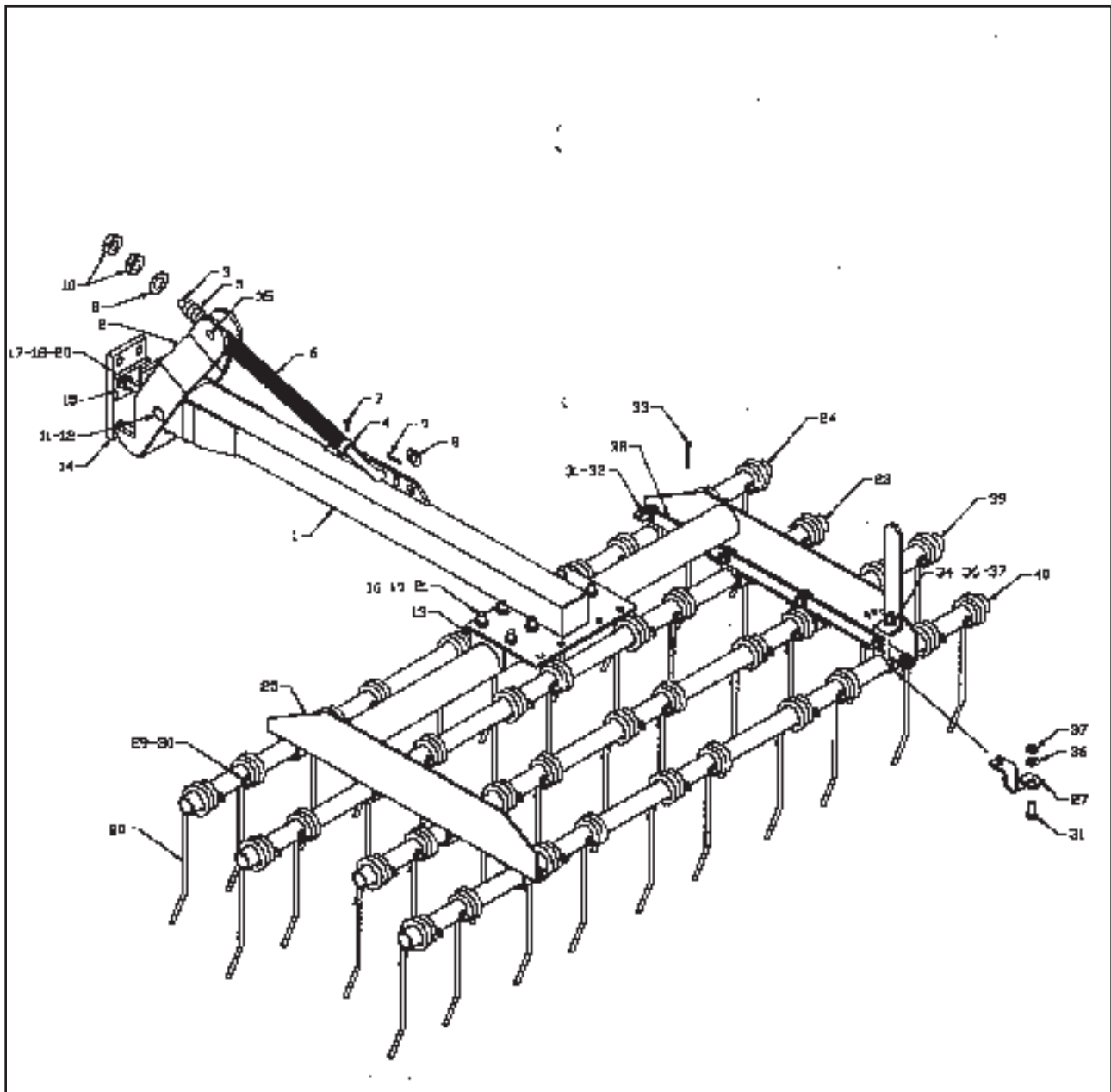


MOUNT ACCORDING TO FRAME SIZE

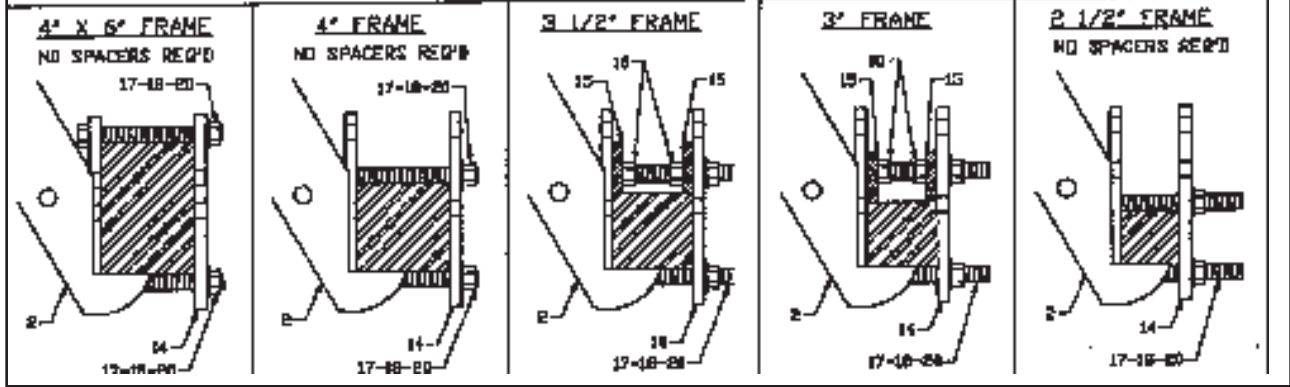


3-BAR COIL-TINE HARROW

Index No.	Part No.	Description	No. Req'd.	Code
1	3K238	Mounting Arm Weldment	1	972100
2	3K239	Mount Assembly	1	972101
3	3K240	Pressure Rod	1	972102
4	3K241	Collar	1	972103
5	3K242	Short Spring	1	972104
6	3K243	Long Spring	1	972105
7	3C947	Set Screw 1/2-13 NC x 3/4" long	1	
8	2C458	Flat Washer, 3/4" SAE	1	
9	1D594	Hairpin Cotter, .178 Dia	1	
10	6C114	Jam Nut, 3/4-10 NC	2	
11	3K244	Carriage Bolt, 3/4-10 NC x 6" long	1	
12	6C729	Locknut, 3/4-10 NC Hex Stover	1	
13	3K245	Mounting Clamp	4	972107
14	3K246	Mounting Plate	1	972108
15	3K247	Spacer	2	972109
16	3K248	3" Round U-Bolt, 1/2-13 NC thread	4	972110
17	3K249	Full Thread Bolt, 5/8-11 NC x 6	4	972111
18	1C392	Nut, 5/8-11 NC Hex	4	
19	1C390	Nut, 1/2-13 NC Hex	8	
20	1B166	Lockwasher, 5/8"	4	
21	1C109	Lockwasher, 1/2"	8	
22	3K250	Rear Spring Tube, 4'-9"	1	972112
	3K251	Rear Spring Tube, 6'-0"	1	972113
	3K252	Rear Spring Tube, 7'-3"	1	972114
23	3K253	Center Spring Tube, 4'-9"	1	972115
	3K254	Center Spring Tube, 6'-0"	1	972116
	3K255	Center Spring Tube, 7'-3"	1	972117
24	3K256	Front Spring Tube, 4'-9"	1	972118
	3K257	Front Spring Tube, 6'-0"	1	972119
	3K258	Front Spring Tube, 7'-0"	1	972120
25	3K259	Mounting Frame, 4'-9"	1	972121
	3K260	Mounting Frame, 6'-0"	1	972122
	3K261	Mounting Frame, 7'-3"	1	972123
26	3K262	Tube Link Bar	1	972124
27	3K263	Spring Tube Clamp	6	972125
28	4K927	Double Coil Tine, Straight		972151
29	3K264	Hx. Hd. Shoulder Bolt, 3/8 x 2 1/2		972127
30	5C954	Locknut, 3/8-16 Hex Stover		
31	1D546	Capscrew, 7/16-14NC x 1 1/4	14	
32	1D014	Locknut, 7/16-14 Hex Stover	2	
33	1C869	Cotter Pin, 1/4 x 2 1/2	1	
34	6J665	Carriage Bolt, 7/16-14NC x 1 1/2	1	
35	3K265	Cast Trunion	1	988646
36	1C314	Lockwasher, 7/16	12	
37	1C179	Nut, 7/16-14NC Std. Hex	12	



MOUNT ACCORDING TO FRAME SIZE



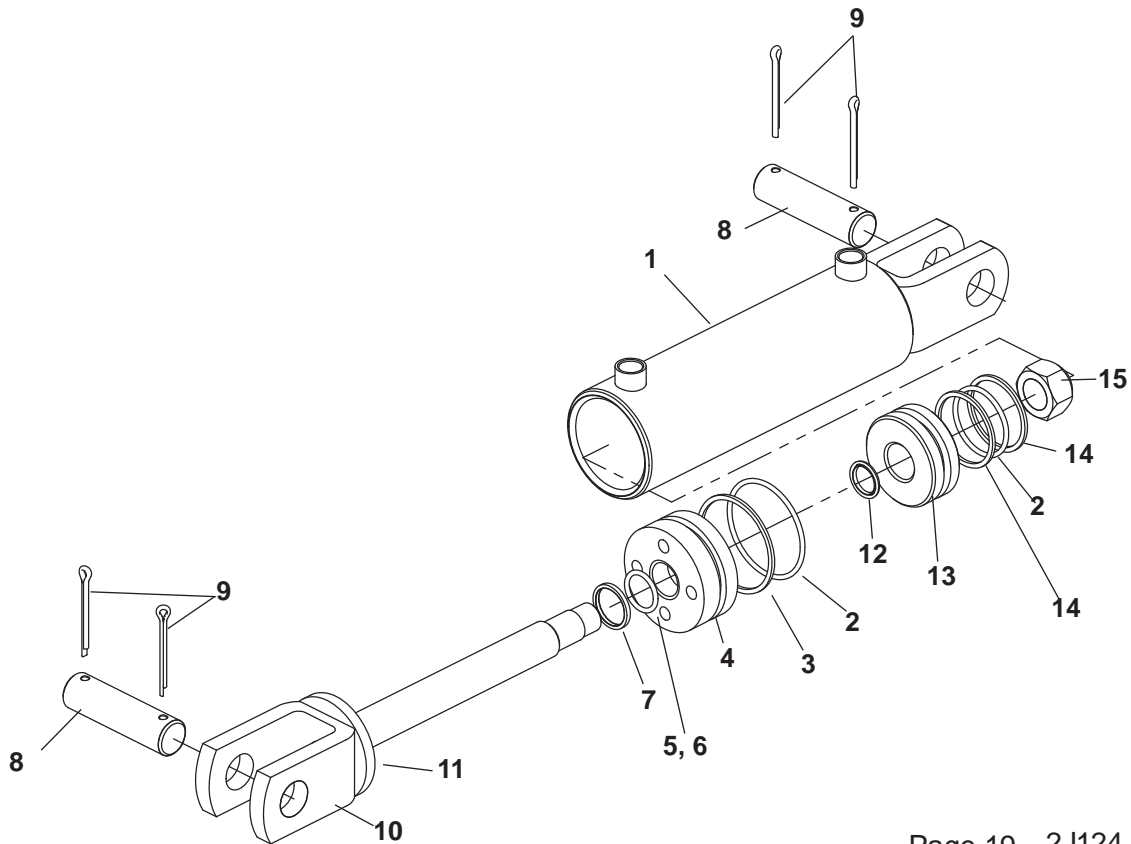
4-BAR COIL-TINE HARROW

Index No.	Part No.	Description	No. Req'd	Code
1	3K238	Mounting Arm Weldment	1	972100
2	3K239	Mount Assembly	1	972101
3	3K240	Pressure Rod	1	972102
4	3K241	Collar	1	972103
5	3K242	Short Spring	1	972104
6	3K243	Long Spring	1	972105
7	3C947	Set Screw 1/2-13 NC x 3/4" long	1	984110
8	2C458	Flat Washer, 3/4" SAE	1	84050
9	1D594	Hairpin Cotter, .178 Dia	1	965625
10	6C114	Jam Nut, 3/4-10 NC	2	86111
11	3K244	Carriage Bolt, 3/4-10 NC x 6" long	1	972106
12	6C729	Locknut, 3/4-10 NC Hex Stover	1	812365
13	3K245	Mounting Clamp	4	972107
14	3K246	Mounting Plate	1	972108
15	3K247	Spacer	2	972109
16	3K248	3" Round U-Bolt, 1/2-13 NC thread	4	972110
17	3K249	Full Thread Bolt, 5/8-11 NC x 6	4	972111
18	1C392	Nut, 5/8-11 NC Hex	4	81676
19	1C390	Nut, 1/2-13 NC Hex	8	81636
20	1B166	Lockwasher, 5/8"	4	81677
21	1C109	Lockwasher, 1/2"	8	81637
23	3K253	Center Spring Tube, 4'-9"	1	972115
	3K254	Center Spring Tube, 6'-0"	1	972116
	3K255	Center Spring Tube, 7'-3"	1	972117
24	3K256	Front Spring Tube, 4'-9"	1	972118
	3K257	Front Spring Tube, 6'0"	1	972119
	3K258	Front Spring Tube, 7'-0"	1	972120
25	4K682	Mounting Frame, 4'-9"	1	972142
	4K683	Mounting Frame, 6'-0"	1	972143
	4K684	Mounting Frame, 7'-3"	1	972144
27	3K263	Spring Tube Clamp	6	972125
28	4K927	Double Coil Tine		972151
29	3K264	Hx. Hd. Shoulder Bolt, 3/8 x 2 1/2		972127
30	5C954	Locknut, 3/8-16 Hex Stover		812363
31	1D546	Capscrew, 7/16-14NC x 1 1/4	14	81598
32	1D014	Locknut, 7/16-14 Hex Stover	2	86273
33	1C869	Cotter Pin, 1/4 x 2 1/2	1	9812436
34	6J665	Carriage Bolt, 7/16-14NC x 1 1/2	1	984242
35	3K265	Cast Trunion	1	988646
36	1C314	Lockwasher, 7/16	12	81615
37	1C179	Nut, 7/16-14 Std Hex	12	81614
38	4K685	Tube Link Bar (4-Bar) 28 1/4" Long	1	972135
39	4K686	#3 Spring Tube 4'-9"	1	972136
	4K687	#3 Spring Tube 6'-0"	1	972137
	4K688	#3 Spring Tube 7'-3"	1	972138
40	4K689	#4 Spring Tube 4'-9"	1	972139
	4K690	#4 Spring Tube 6'-0"	1	972140
	4K691	#4 Spring Tube 7'-3"	1	972141

5J280 G Hydraulic Cylinder 3 x 8
 Hydraulic Gear #3008-01 Painted Black
 1-1/8" Dia. Rod, 20-3/8 Retracted, 28-3/8 Extended Length

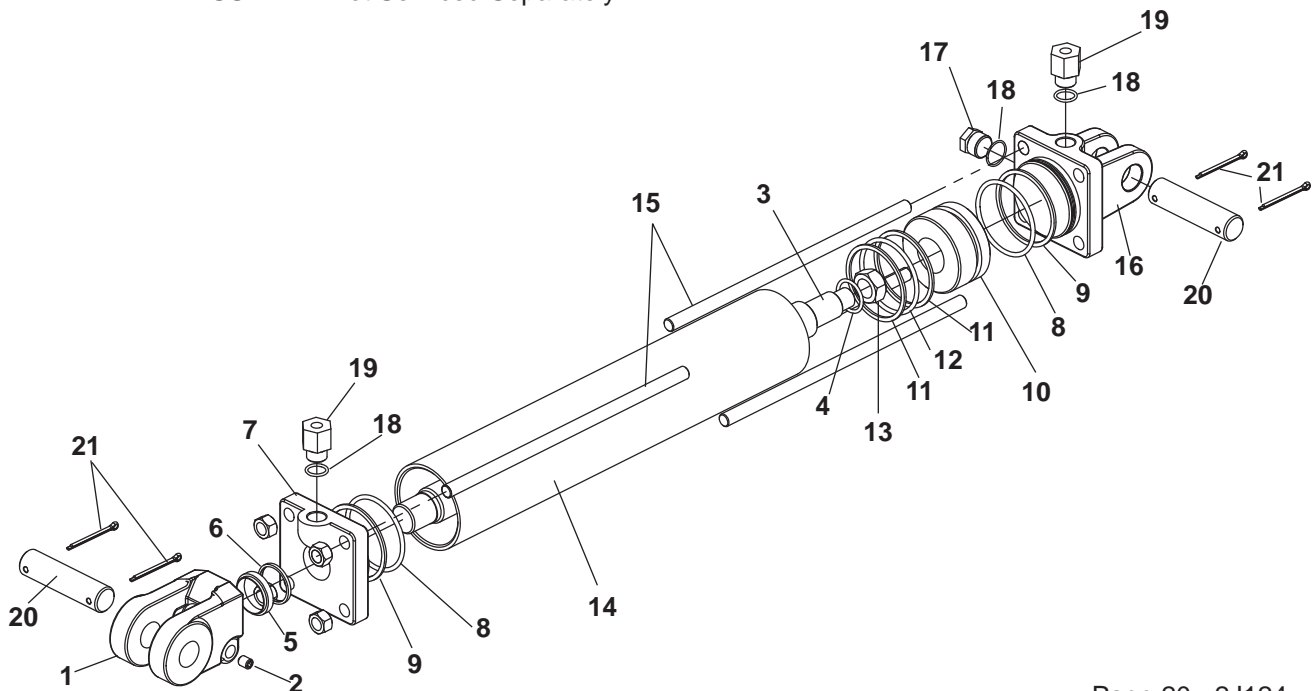
<u>Item</u>	<u>Part No.</u>	<u>Description</u>	<u>Qty.</u>
1	5J203	Tube Assembly	1
*2	NSS	O Ring	2
*3	NSS	Back-Up Ring	3
4	3J266	Packing Gland	1
*5	NSS	O Ring	1
*6	NSS	Back Up Ring	2
*7	NSS	Wiper	1
8	5J650	Cylinder Pin	2
9	6C468	Cotter Pin, 3/16" x 2"	4
10	5J202	Rod Assembly	1
11	6J576	Spacer/Stop	1
*12	NSS	Seal	1
13	3J265	Piston	1
*14	NSS	Spiral Teflon Back-Up Ring	2
15	6D918	Hex Nut 3/4-16 Lock	1
*	3J263	Seal Kit (Items marked "**")	

NSS = Not Serviced Separately



5J830P Hydraulic Cylinder, 4 x 30
 Prince #AB-165 Painted Black
 1 3/4" Rod Diameter; 40 1/4" Retracted, 70 1/4" Extended

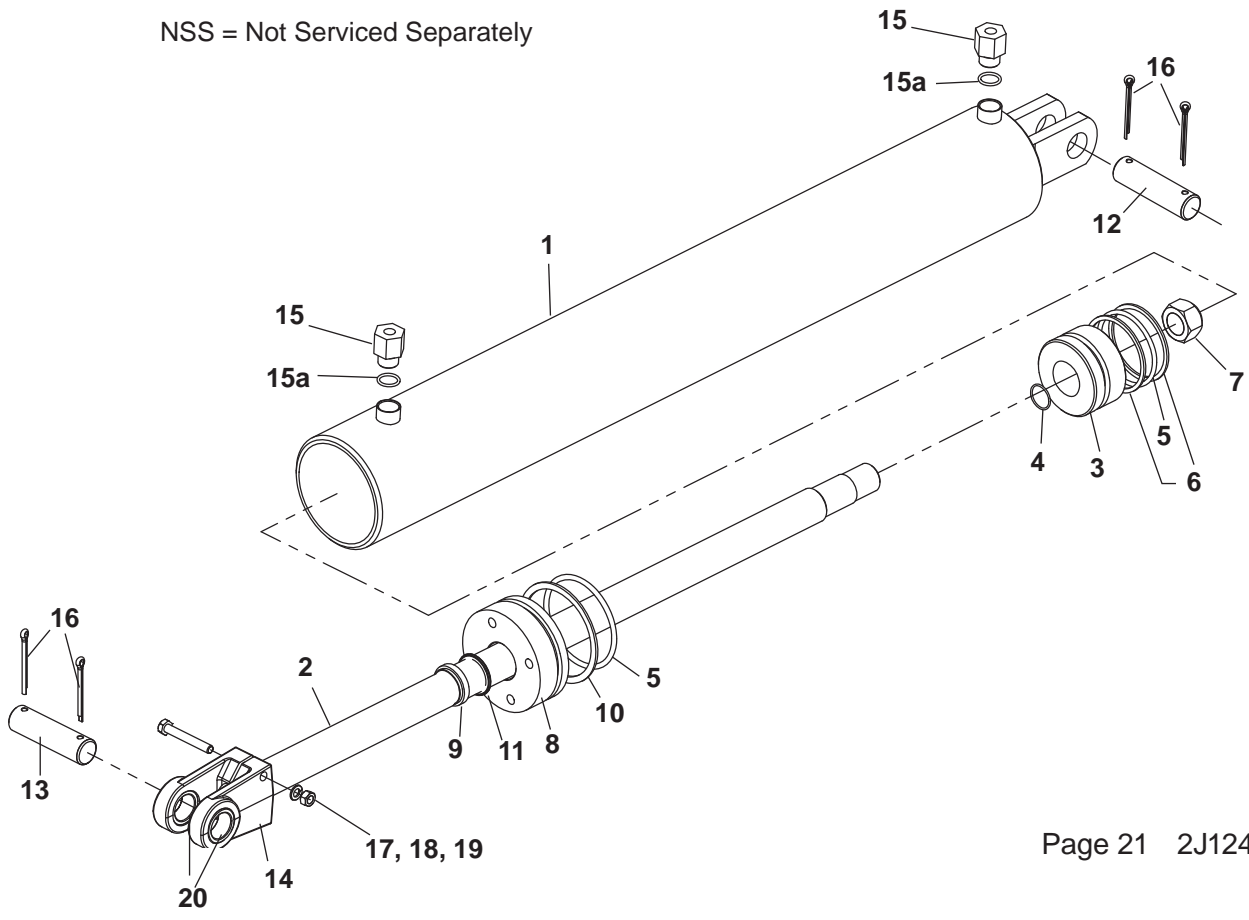
Item	Part No.	Description	Qty.
1	1J072	Rod End Clevis	1
2	6J345	Set Screw, 3/8-24 NF x 1/2"	1
3	6J336	Piston Rod	1
*4	NSS	O-Ring	1
*5	NSS	Rod Wiper	1
*6	NSS	U-Cup	1
*7	7J052	Gland (With Port Requiring O-Ring Fitting)	1
	1J946	Gland (With Pipe Thread)	
		When this number is ordered you will receive (1) 7J052, (1) 7J024, and (1) 7J026	
*8	NSS	O-Ring	2
*9	NSS	Back-Up Washer	2
10	1J947	Piston	1
*11	NSS	Back Up Washer	2
*12	NSS	O-Ring	1
13	1J951	Locknut, 1 1/4-12 NF	1
14	6J337	Tube	1
15	6J338	Tie Rod	4
16	7J053	Base (with Ports Requiring O-Ring Fittings)	1
	1J950	Base (with Pipe Thread)	
		When this number is ordered you will receive (1) 7J053, (2) 7J024, and (1) 7J025, and (1) 7J026	
17	7J025	Steel Plug, O-Ring type (without O-Ring)	1
18	7J024	O-Ring (not a part of 7J025 & 7J026)	3
19	7J026	Adaptor (without O-Ring)	2
20	7J067	Clevis Pin 1" dia. x 4" Long	2
21	1C278	Cotter Pin, 5/32" x 2"	4
*	1J070	PMCK-AB-165 Seal Kit	
	NSS =	Not Serviced Separately	



5J830G Hydraulic Cylinder 4 x 30
 Hydraulic Gear #BIW4030 Painted Black
 1-3/4 Dia. Rod, 40-1/4 Retracted, 70-1/4 Extended Length

<u>Item</u>	<u>Part No.</u>	<u>Description</u>	<u>Qty.</u>
1	8K602	Cylinder Tube	1
2	8K603	Rod	1
3	1J955	Piston	1
*4	NSS	O-ring	1
*5	NSS	O Ring	2
*6	NSS	Spiral Teflon Backup	1
7	1J951	Nut, 1 1/4-20 NC	1
8	1J953	Packing Gland	1
*9	NSS	Rod Wiper	1
*10	NSS	Parback	1
*11	NSS	Polyseal	1
12	5J650	Pin (Backcap End)	1
13	5K798	Pin (Rod End Clevis)	1
14	5J195	Clevis	1
15	7J026	Adapter (without O-ring)	2
15-a	7J024	O-ring	2
16	6C468	Cotter Pin	4
17	9D797	HHCS, 5/16 -18 NC x 2 1/4"	1
18	1C385	Nut, 5/16-18 NC Hex	1
19	1C362	Lock Washer, 15/16"	1
20	5K964	Bushing	2
*	8K604	Seal Kit (Items marked "**")	

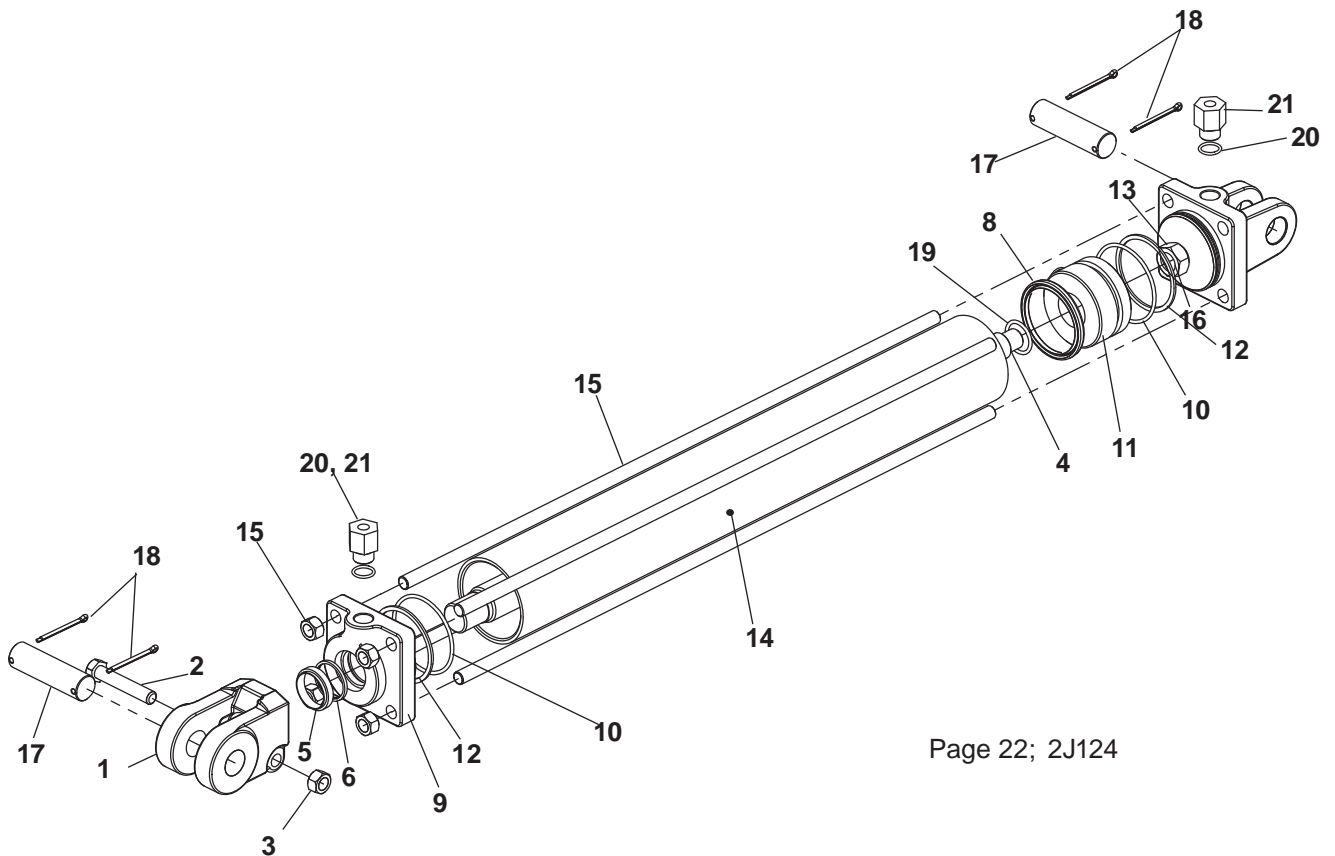
NSS = Not Serviced Separately



6J216P Hydraulic Cylinder, 3 x 30
 Prince #BD-0565 Painted Black
 1 3/8" Rod Diameter; 40 1/4" Retracted, 70 1/4" Extended

<u>Item</u>	<u>Part No.</u>	<u>Description</u>	<u>Qty.</u>
1	9D481	Rod End Clevis	1
2	9C271	HHCS, 3/8-16 NC x 2 1/4" Long GR. 5	1
3	5C954	Hex Nut, 3/8-16 NC, self-locking	1
4	7K929	Rod	1
*5	NSS	Rod Wiper	1
*6	NSS	Back-Up Ring	1
*7	--	----	-
*8	NSS	Crown Seal	1
9	7K931	Gland (With Port Requiring O-Ring Fitting)	1
*10	NSS	O-Ring - End Cap	2
11	7K930	Piston	1
*12	NSS	Back Up Ring	2
13	9C223	Piston Nut, 1-14 UNF, self locking	1
14	6J340	Tube	1
15	7K932	Tie Rod Assembly	4
16	7J049	Butt end Clevis	1
17	5J650	Clevis Pin	2
18	1C278	Cotter Pin, 5/32" x 2"	4
19	NSS	O-Ring	1
20	7J024	O-Ring (not a part of 7J026)	3
21	7J026	Adaptor (without O-Ring)	2
*	7K926	PMCK-BD-0565 Seal Kit (items marked with "*")	

NSS =Not Serviced Separately

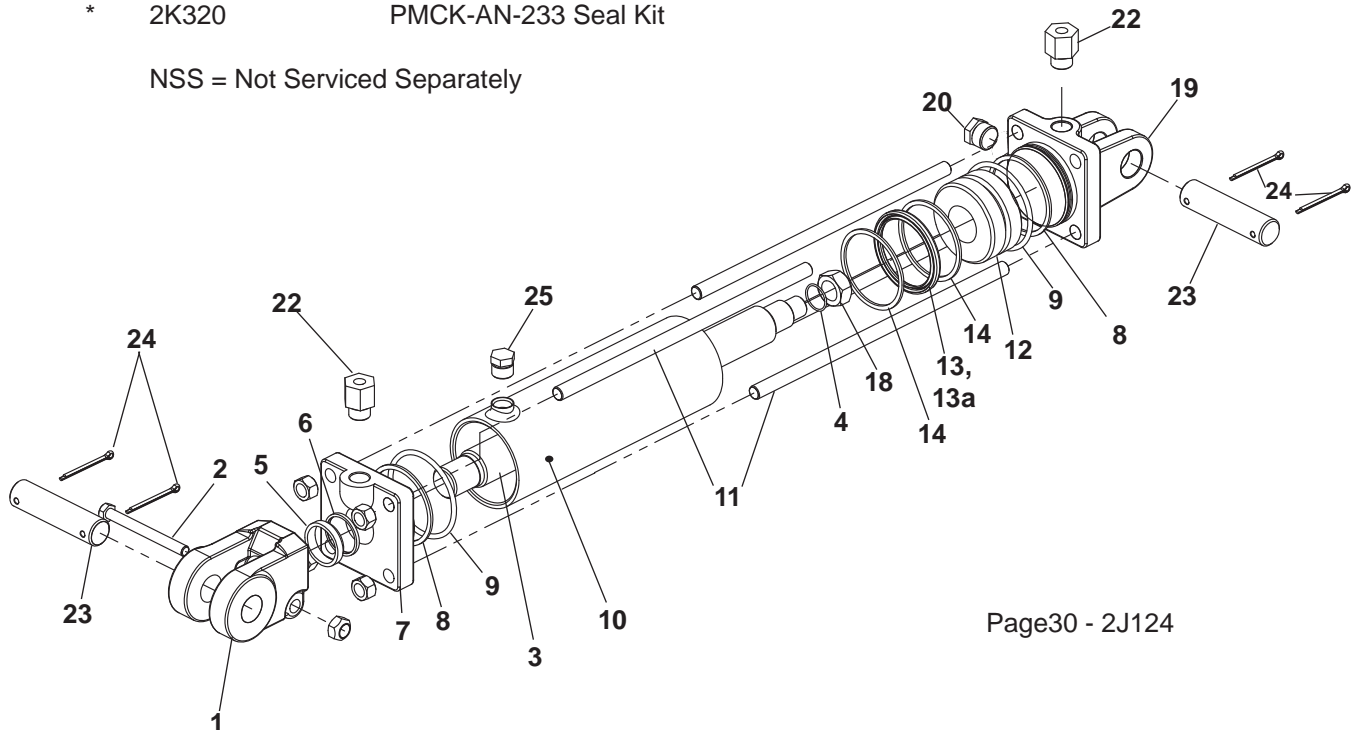


Page 22; 2J124

2K087P Hydraulic Cylinder, 3 3/4 x 8
 Prince #AN-233 Painted Black
 1 3/8" Rod Diameter; 20 1/4" Retracted, 28 1/4" Extended

Item	Part No.	Description	Qty.
1	3J723	Rod End Clevis, w/ 1 1/8" Dia. Thread (Before 2/98)	1
	6K841	Rod End Clevis, w/ 1 5/16" Dia. Thread (After 2/98)	1
2	5D667	Capscrew, 3/8-16 NC x 2 1/2"	1
	5C954	Stover Lock Nut, 3/8-16 NC	1
3	2K321	Piston Rod, 1 1/8" Dia. Clevis End (Prior to 2/98)	1
	6K840	Piston Rod, 1 5/16" Dia. Clevis End (After 2/98)	1
*4	NSS	O-Ring	1
*5	NSS	Rod Wiper	1
*6	NSS	U-Cup	1
7	2K318	Gland w/ Bushing	1
*8	NSS	Back Up Washer	2
*9	NSS	O-Ring	2
10	9J651	Tube Assembly	1
11	8J859	Tie Rod with Nut	4
12	2K319	Piston	1
*13	NSS	O-Ring	1
*13a	NSS	Teflon Seal	1
*14	NSS	Bearing Ring	2
15-17	--	--	
18	9C223	Lock Nut, 1"-14 NF	1
19	7J064	Base	1
20	7J025	Steel Plug	1
21	---		
22	7J026	Adaptor	2
23	7J067	Clevis Pin, 1" Dia. x 4" Long	2
24	6C468	Cotter Pin, 3/16 x 2"	4
25	9J623	Plug	1
*	2K320	PMCK-AN-233 Seal Kit	

NSS = Not Serviced Separately



Page30 - 2J124

Index

<u>Part No.</u>	<u>Page</u>	<u>Index No.</u>	<u>Part No.</u>	<u>Page</u>	<u>Index No.</u>	<u>Part No.</u>	<u>Page</u>	<u>Index No.</u>
B								
1B166	3	16	1C787	3	22	6C406	3	10
	13	5	1C788	11	7	6C468	5	29
	15	15	1C820	21	7		7	34
	19	15	1C869	23	33	6C729	5	17
	20	3	1C871	5	13		9	32
	21	19	1C871	7	33			
	23	20		11	4		23	12
				15	12	7C940	5	27
			2C458	23	8		7	29
			2C998	38	5	8C036	35	2
				48	7		7	22
C								
1C109	3	19	3C173	9	13	8C527	9	27
	7	7		19	5	9C134	21	17
	9	24	3C335	5	30	9C223	57	18
	13	25	3C350	9	14		58	18
	19	18		19	4	9C853	32	17
	23	21	3C491	3	24			
1C122	15	20	3C947	23	7	D		
1C133	5	18	4C129	9	17			
	9	31	4C856	5	31	1D014	23	32
1C179	13	32		9	29	1D237	7	23
1C182	21	14	4C858	15	11		13	22
1C210	3	13	5C100	9	18	1D273	9	6
	5	22		19	12		19	11
	7	38	5C392	13	21	1D424	3	12
	20	7	5C460	13	37		5	20
1C211	3	14		15	19		7	36
	5	21	5C461	13	33	1D546	23	31
	7	37		13a	4	1D594	31	8
	20	6	5C479	9	8		32	21
1C267	21	16		11	10		35	18
1C277	35	3		19	9		23	9
1C314	13	32	5C480	9	7		57	24
	23	36		11	11		58	24
1C390	13	24		19	10	1D604	5	32
	3	18	5C392	21	10		7	31
	7	6	5C911	9	10	1D807	11	22
	9	25		19	8	1D808	11	21
	19	19	5C912	9	11	2D448	17	3
	23	19		19	7		18	3
1C392	3	17	5C913	11	8		9	30
	13	6	5C914	11	9	2D473	9	28
	15	16	5C954	7	25	2D474	13	4
	19	16		11	31	2D799	5	28
	20	4		21	4		7	32
	21	20		23	30	2D894	5	12
	23	18		57	2	4D345	13	18
1C675	13	23		58	2	4D561	3	15
	13	34	6C114	23	10	4D980	15	2
	13a	6	6C334	11	20			

Part No.	Page	Index No.	Part No.	Page	Index No.	Part No.	Page	Index No.
4D982	17	6		19	6		31	-
	18	2	1J399	9	5	5J333	3	32
5D155	35	17	1J463	9	15		20	8
5D335	13	17		19	3	5J358	13	12
	19	17	1J939	35	9	5J492	13	16
5D667	57	2	1J940	35	11	5J650	31	7
	58	2	1J943	35	16			
5D871	21	15	1J946	32	7			
6D049	11	25	1J947	32	10	5J830	15	9
6D147	15	6	1J950	32	16		32	-
6D284	11	5	1J951	32	13	5J914	15	17
6D301	13a	7	2J170	15	4		20	2
6D306	3	23		17	14	5J915	3	5
6D311	11	14	2J430	7	41		7	5
6D312	11	15	2J431	7	42		9	23
6D333	15	18	2J605	13	30	6J050	19	14
6D336	11	3	2J716	11	24		21	18
6D337	11	6	2J783	3	8	6J189	9	17
6D716	15	7	2J784	21	21	6J216	15	8
6D725	17	2	2J858	3	6	6J216	35	-
6D758	9	16	2J975	13	38	6J336	32	3
6D769	7	24	2J997	9	28	6J337	32	14
	11	30	3J263	31	**	6J338	32	15
6D918	31	12	3J265	31	11	6J339	35	4
	35	13	3J266	31	4	6J340	35	14
7D795	9	30	3J451	20	5	6J341	35	15
8D220	13	7	3J543	15	3	6J345	32	2
8D221	13	9	3J547	17	5	6J587	21	23
8D301	13	31	3J548	17	5	6J588	21	23
8D388	3	21	3J607	3	7	6J589	21	23
8D590	5	25	3J615	17	11	6J590	21	23
	7	27		18	5	6J649	5	10
9D293	5	11	3J675	3	31	7J024	32	18
9D481	35	1	3J678	3	30		57	21
9D482	35	*	3J723	57	1		58	21
9D509	5	16		58	1	7J025	32	17
9D674	17	9	4J410	5	26		57	20
	18	4		7	28		58	20
9D693	5	23	4J411	13	11	7J026	15	21
	7	39	4J539	17	4		17	8
9D851	17	10	4J801	13	28		32	19
9D923	3	11	4J803	13	27		57	22
	5	6	4J808	13	29		58	22
	7	30	4J829	17	4	7J052	32	7
	13	13	4J832	17	4	7J053	32	16
9D989	3	25	4J867	3	26		58	19
			4j916	13	43	7J064	57	19
J			5J132	31	13	7J067	32	20
			5J202	31	9		57	23
1J070	32	*	5J203	31	1		58	23
1J072	32	1	J234	15	5	7J072	21	23
1J390	9	9	5J280	5	8	7J077	21	23
				18	6	7J102	21	23

Part No.	Page	Index No.	Part No.	Page	Index No.	Part No.	Page	Index No.
7J346	15	1	2K227	7	20	2K753	9	2
	17	1,5	2K228	11	19	2K765	5	4
	18	1	2K229	11	18	2K800	21	23
8J130	5	14	2K232	15	13	2K824	21	1
8J310	3	28	2K236	15	14	2K826	21	22
8J794	9	19	2K241	7	2	2K828	21	11
	11	16		11	1	2K829	21	12
8J795	9	19	2K242	11	33	2K884	9	3
	11	17	2K243	7	43	2K885	9	4
8J859	57	11		9	26	2K887	15	22
	58	11	2K246	3	9	2K891	9	20
9J206	9	31	2K251	3	4	2K908	9	5
9J212	17	7		7	4	2K909	9	16
9J399	5	33		9	21	3K109	9	3
9J622	58	10	2K252	7	8	3K226	5	34
9J623	57	25		9	22		7	44
	58	26	2K254	5	19	3K228	5	35
9J629	3	29		7	35		7	45
9J651	57	10	2K255	5	9	3K229	5	36
9J695	15	10		7	3		7	46
			2K259	5	24	3K238	23	1
				7	26	3K239	23	2
			2K261	20	1	3K240	23	3
			2K270	19	13	3K241	23	4
1K236	13	8	2K277	19	1	3K242	23	5
1K240	13	2	2K279	19	-	3K243	23	6
1K249	13a	1	2K305	13a	5	3K244	23	11
1K313	21	23	2K306	13	26	3K245	23	13
1K731	3	20	2K314	3	33	3K246	23	14
1K822	3	-	2K317	57	3	3K247	23	15
2K087	7	21	2K318	57	7	3K248	23	16
	17	12	2K319	57	12	3K249	23	17
	57	-	2K320	57	*	3K250	23	22
2K088	5	8	2K321	58	3	3K251	23	22
	17	13	2K322	58	7	3K252	23	22
2K126	3	1	2K323	58	12	3K253	23	23
2K171	5	1	2K324	58	*	3K254	23	23
2K173	5	15	2K573	19	2	3K255	23	23
2K177	7	9	2K702	21	3	3K256	23	24
2K178	7	12	2K708	5	2	3K257	23	24
2K179	7	10	2K709	5	3	3K258	23	24
2K180	7	13	2K710	5	5	3K259	23	25
2K181	7	11	2K730	3	2	3K260	23	25
2K182	7	14	2K731	3	3	3K261	23	25
2K190	3	27		7	1	3K262	23	26
2K206	7	15		7	1	3K262	23	26
2K207	7	16	2K734	11	2	3K263	23	27
2K208	11	26	2K735	7	17	3K264	23	29
2K209	11	28	2K736	7	19	3K265	23	35
2K210	11	29	2K737	11	27	3K270	21	2
2K220	11	23	2K738	11	32	3K286	21	5
2K225	5	7	2K744	19	20	3K287	21	6
2K226	7	18	2K745	19	21	3K288	21	8
			2K752	9	1	3K291	21	13

<u>Part No.</u>	<u>Page</u>	<u>Index No.</u>
3K342	5	37
	7	47
	9	5
3K706	2	35
4K036	9	33
4K037	3	34
	7	40
4K038	7	49
	9	34
4K165	13	1
4K168	13	10
4K484	13	20
4K497	13	39
4K498	13a	2
4K499	13a	3
4K551	13	44
4K591	9	4
4K637	13	36
4K638	13	35
4K664	21	9
4K817	13	3
4K927	23	28
	23b	28
6K213	3	40
6K214	3	37
6K215	3	39
6K262	13	--
6K263	13	41
6K264	13	42
6K265	13	40
7K530	13	14
8K349	5	36
8K350	5	37



Intertek

Equipment from Landoll Corporation is built to exacting standards ensured by ISO 9001:2008 registration at all Landoll manufacturing facilities.

LANDOLL CORPORATION

1900 North Street

Marysville, Kansas 66508

(785) 562-5381

800-428-5655 ~ WWW.LANDOLL.COM



Copyright 2010. Landoll Corporation

"All rights reserved, including the right to reproduce this material or portions thereof in any form"
