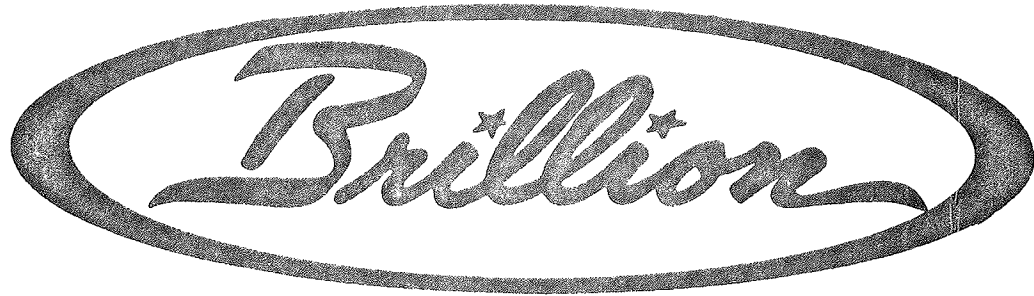


REPAIR PARTS CATALOG

FOR



Hydna - Lift

SPRING TOOTH HARROW

MODELS HSD-272 296

SPRING TINE HARROW

MODELS HSDS-272 296

IMPORTANT!

Repairs cannot be purchased retail direct from factory. Order through your Brillion dealer.

MODEL NO.

DATE PURCHASED



BRILLION IRON WORKS
BRILLION, WISCONSIN 54110

CENTER SECTION AND DRAWBAR ASSEMBLY

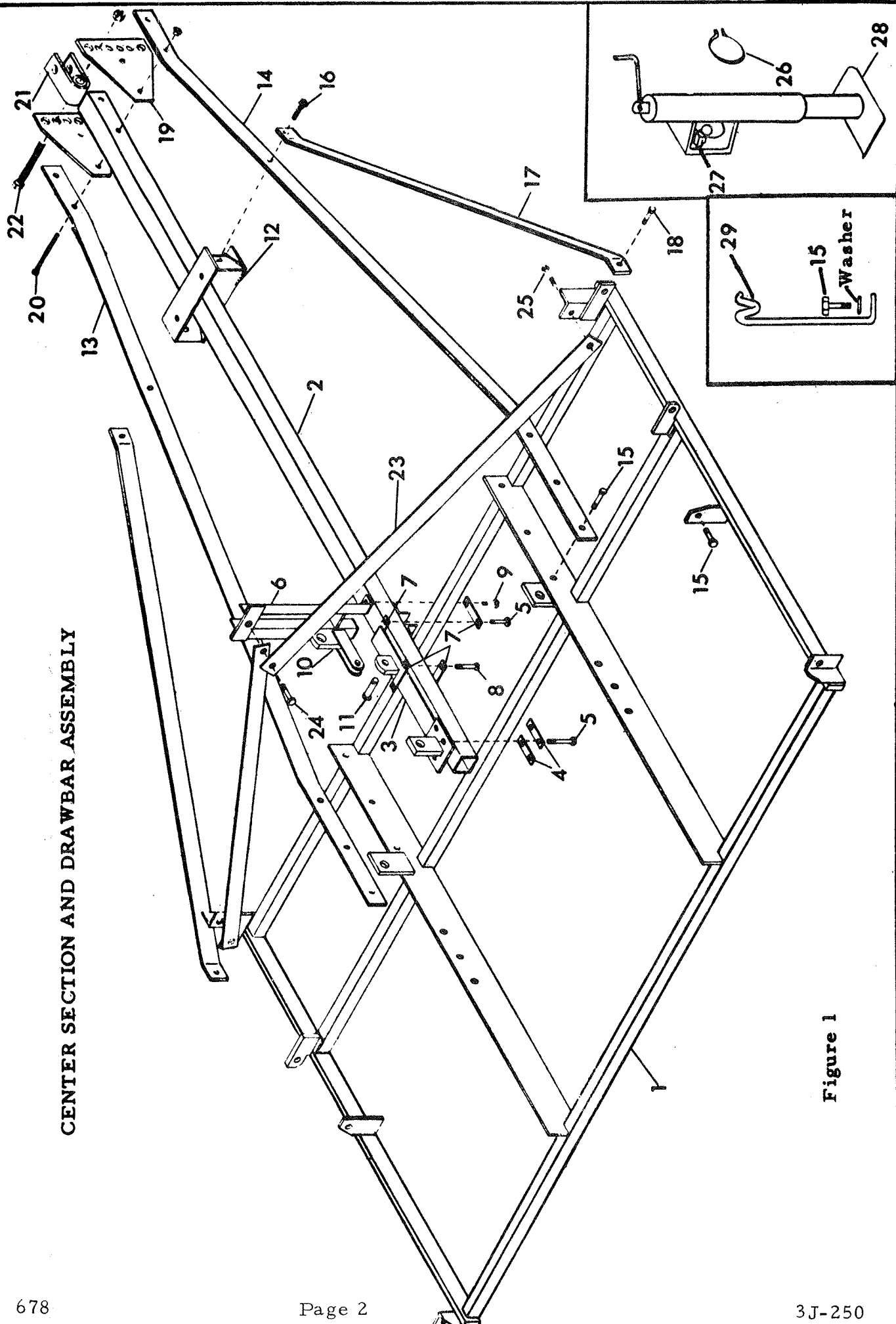


Figure 1

CENTER SECTION AND DRAWBAR ASSEMBLY

Index No.	Part No.	Description	No. Req'd.	Weight
1	6D-582	Center Frame Assembly	1	425.0
2	6D-644	Tongue Assembly	1	132.7
3	6D-686	Transport Axle Lift Mounting	1	14.0
4	5C-78	Clamp Strap	2	.5
5	3C-910	Capscrew (1/2 x 6-1/2" Long, Grade 5)	6	
6	6D-646	Vertical Brace Support	1	17.0
7	6D-702	Clamp	5	.6
8	5D-142	Capscrew (1/2 x 5" Long, Grade 5)	2	
9	6D-744	Capscrew (1/2 x 2-3/4" Long, Grade 5)	2	
10	6D-700	Lug Assembly	1	6.0
11	2D-473	Clevis Pin	1	.1
*	2C-298	Cotter Pin	1	
12	6D-691	Tongue Brace	1	12.0
13	8D-398	Jack Mounting Brace	1	92.3
14	6D-705	Inner Tongue Brace	1	91.0
15	5C-460	Capscrew (5/8 x 2 Long, Grade 5)	10	
16	5D-990	Capscrew (5/8 x 2-3/4 Long, Grade 5)	2	
17	6D-669	Outer Tongue Brace	2	47.3
18	6D-742	Capscrew (3/4 x 3 Long, Grade 5)	2	
19	6D-667	Hitch Plate	2	13.5
20	6D-355	Capscrew (5/8 x 6" Long, Grade 5)	2	
21	6D-697	Hitch Clevis	1	9.25
22	6D-740	Bolt (1" x 5-1/2" Long, Grade 5)	1	1.5
23	6D-651	Strap	2	22.8
24	4D-957	Capscrew (3/4 x 2-1/4 Long, Grade 5)	1	
25	2D-474	Capscrew (5/8 x 1-3/4 Long, Grade 5)	2	
26	8D-390	Retaining Ring	1	.2
27	8D-399	Plunger	1	.4
28	8D-391	Jack	1	10.5
29	6D-333	Hose Holder	2	2.7
*	5C-392	Locknut (1/2-13 NC, Grade B)	20	
*	5C-461	Locknut (5/8-11 NC, Grade B)	16	
*	6C-729	Locknut (3/4-10 NC, Grade B)	18	
*	6D-306	Locknut (1-8 NC, Grade B)	1	

WING ASSEMBLY

Index No.	Part No.	Description	No. Req'd.	Weight
1	6D-608	7 Ft. L. H. Wing Frame	1	123.36
*	6D-609	7 Ft. R.H. Wing Frame	1	123.36
*	6D-710	6 Ft. L.H. Wing Frame	1	110.0
*	6D-711	6 Ft. R.H. Wing Frame	1	110.0
2	6D-742	Capscrew (3/4 x 3 Long, Grade 5)	6	
3	3D-510	Capscrew (3/4 x 2-1/2 Long, Grade 5)	6	
4	1D-424	Capscrew (3/4 x 2 Long, Grade 5)	2	
5	6D-648	Wing Lift Support - L.H.	2	13.9
6	6D-649	Wing Lift Support - R.H.	2	13.9
7	6D-758	Capscrew (3/4 x 3-1/2 Long, Grade 5)	2	
8	1D-237	Capscrew (1/2 x 2 Long, Grade 5)	4	
9	6D-703	Stop	2	2.25
10	6D-665	Wing Lift Strap (HST-296)	2	21.20
	6D-713	Wing Lift Strap (HST-272)	2	17.0
11	6D-932	Gauge Wheel Assembly - L.H. (Less Hub)	1	17.20
	6D-931	Gauge Wheel Assembly - R.H. (Less Hub)	1	17.20
12	6D-741	Capscrew (3/4 x 4 Long, Grade 5)	2	
13	2D-474	Capscrew (5/8 x 1-3/4 Long, Grade 5)	2	
14	5C-460	Capscrew (5/8 x 2 Long, Grade 5)	2	
15	8C-527	Capscrew (1/2 x 1-1/2 Long, Grade 5)	4	
16	6D-696	Adjusting Link	2	3.0
17	6D-635	Wing Extension	2	2.75
18	6D-341	Spring Tooth		7.5
*	2D-551	Replaceable Point (Use on Worn Tooth)		1.1
*	2C-628	Plow Bolt (3/8-16 NC x 1-1/2 Long, R. CSK. Sq. Neck)	2/Point	
19	5D-871	Capscrew (1/2 x 3-1/2, Grade 5)		
*	5C-392	Locknut (1/2-13 NC)		
20	5D-836	Spring Tooth Clamp		1.2
21	5C-916	Wheel (15 inch - 4 bolt)	2	16.0
22	5C-908	Hub Cap	2	.25
23	5C-100	Wheel Bolt	8	.2
24	5C-909	Slotted Nut	2	.2
25	5C-907	Washer	2	
26	5C-911	Bearing Cone #LM11949	2	.25
27	5C-912	Bearing Cup #LM11910	2	.2
28	5C-904	Hub	2	6.25
29	5C-914	Bearing Cup #LM67010	2	.7
30	5C-913	Bearing Cone #LM67048	2	.25
31	5C-910	Seal	2	.13
32	8C-65	5/8 x 3 Capscrew	2	
		* Not Illustrated		

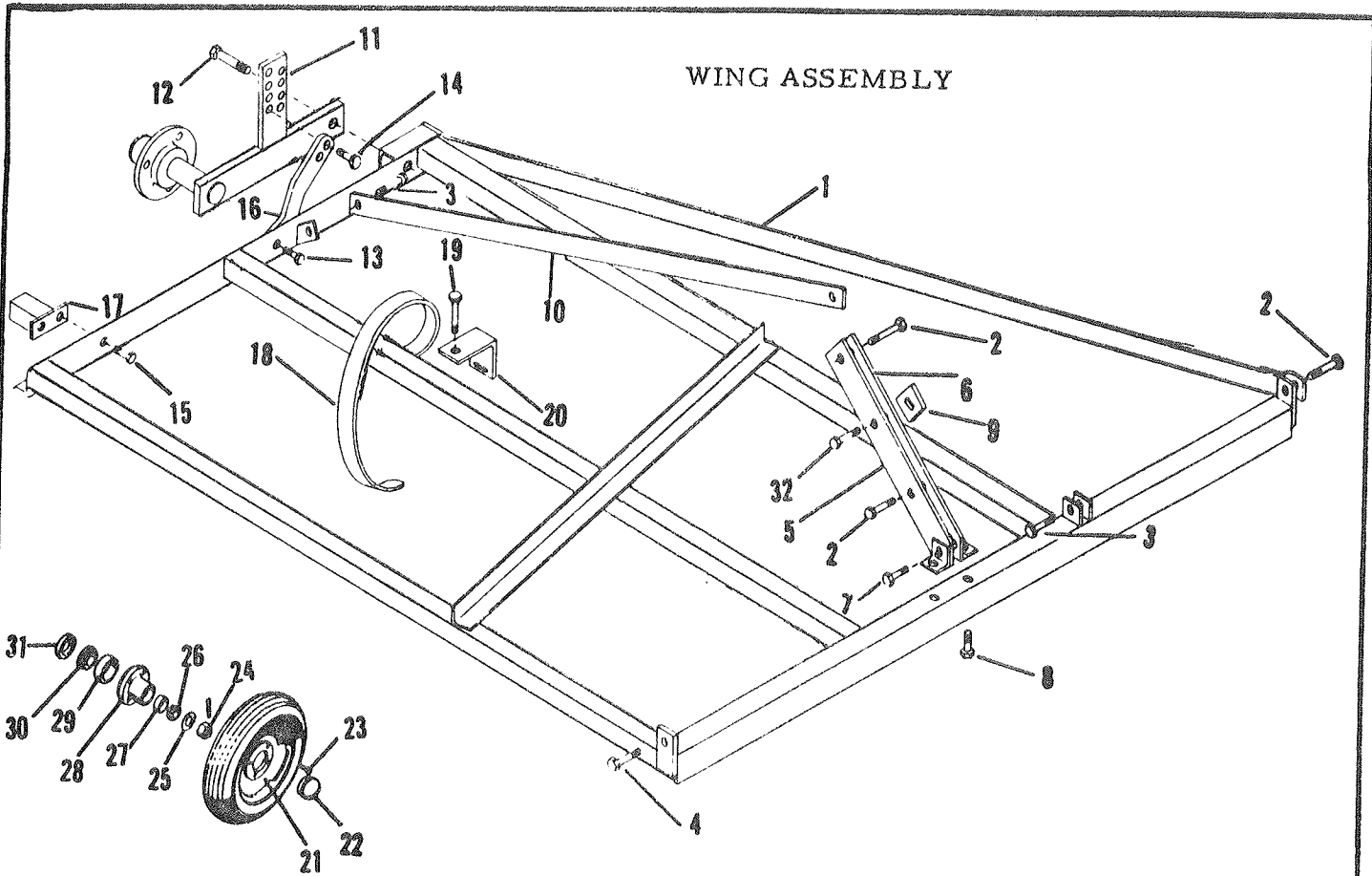


Figure 2

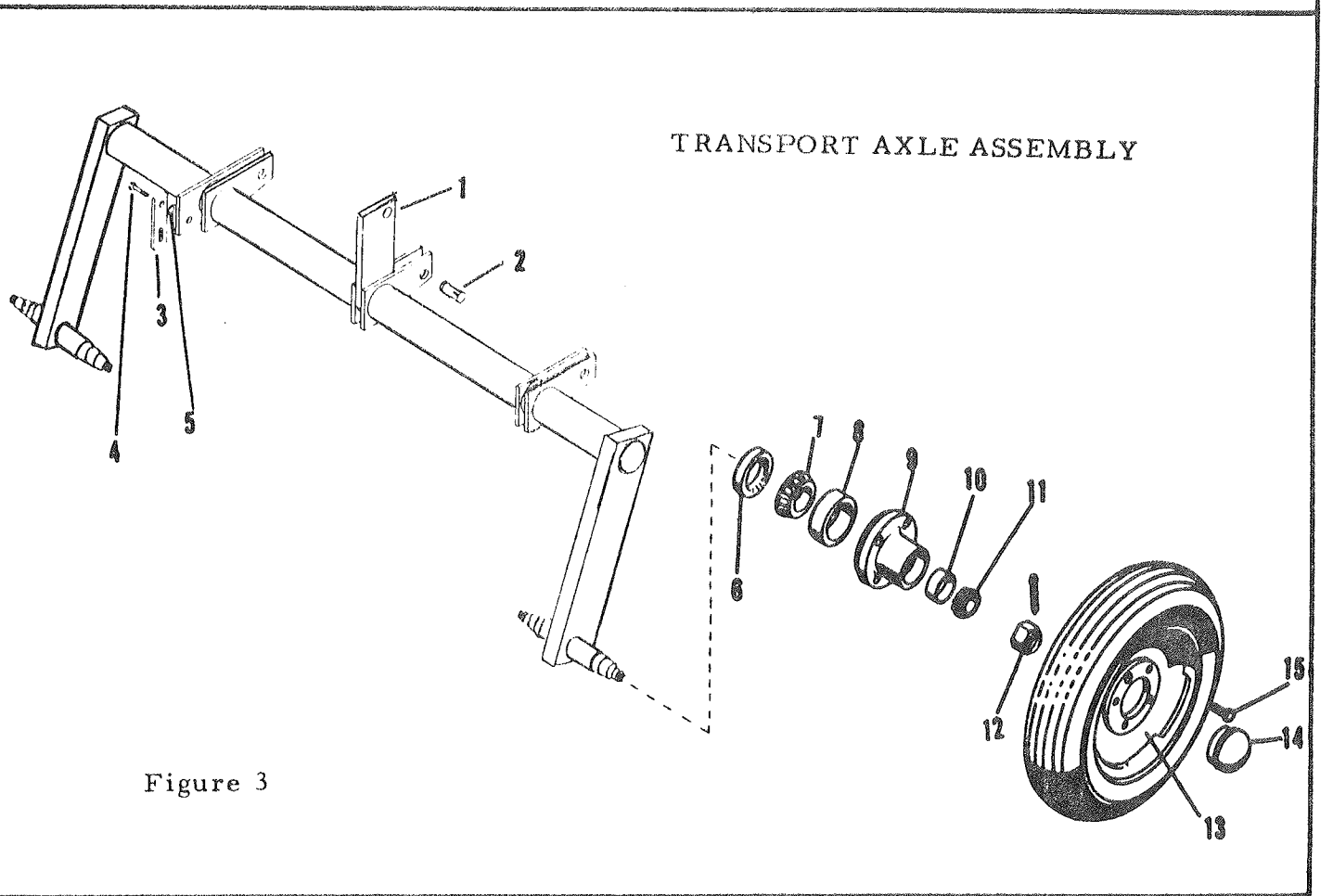


Figure 3

LIFT MECHANISM

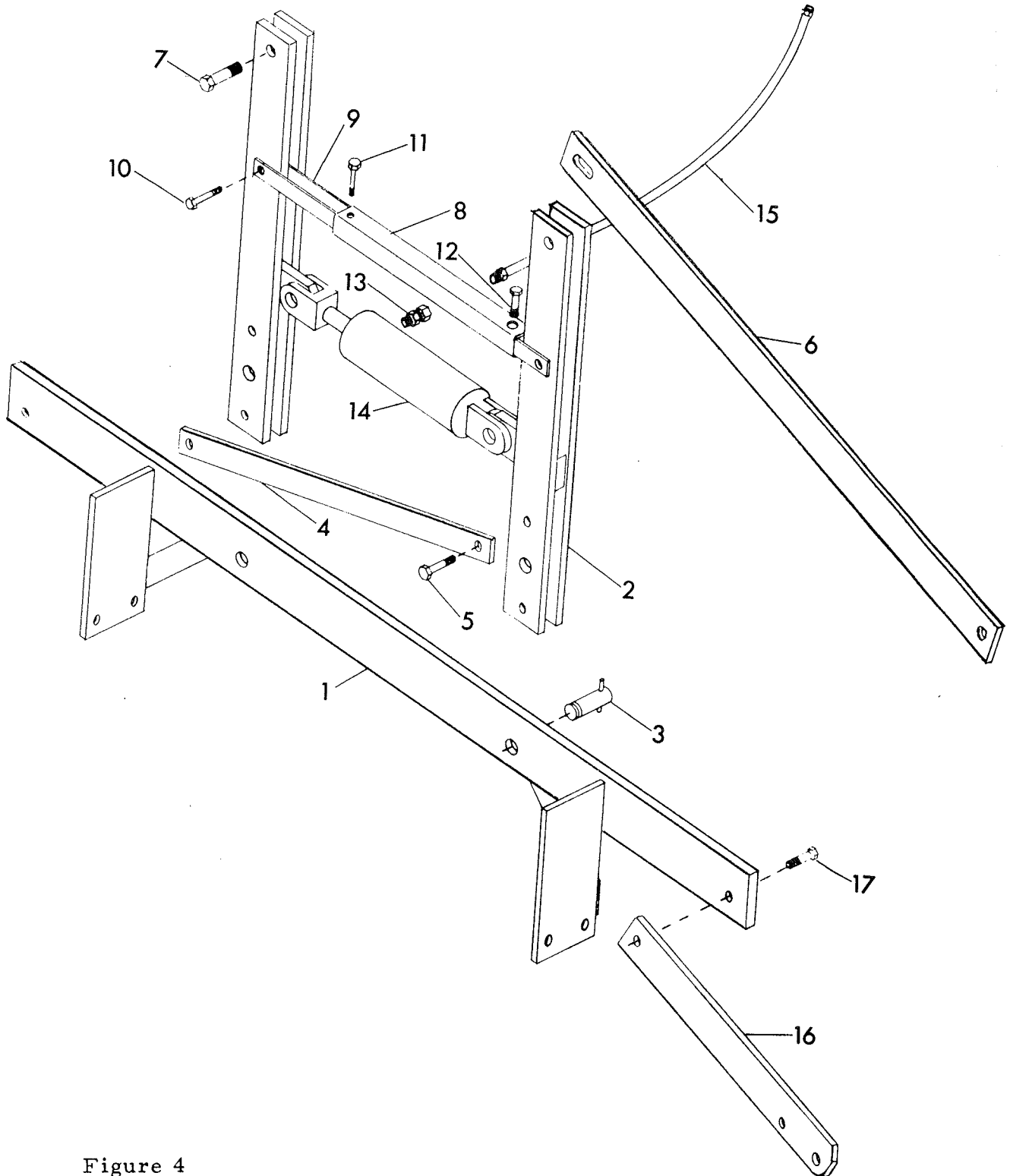


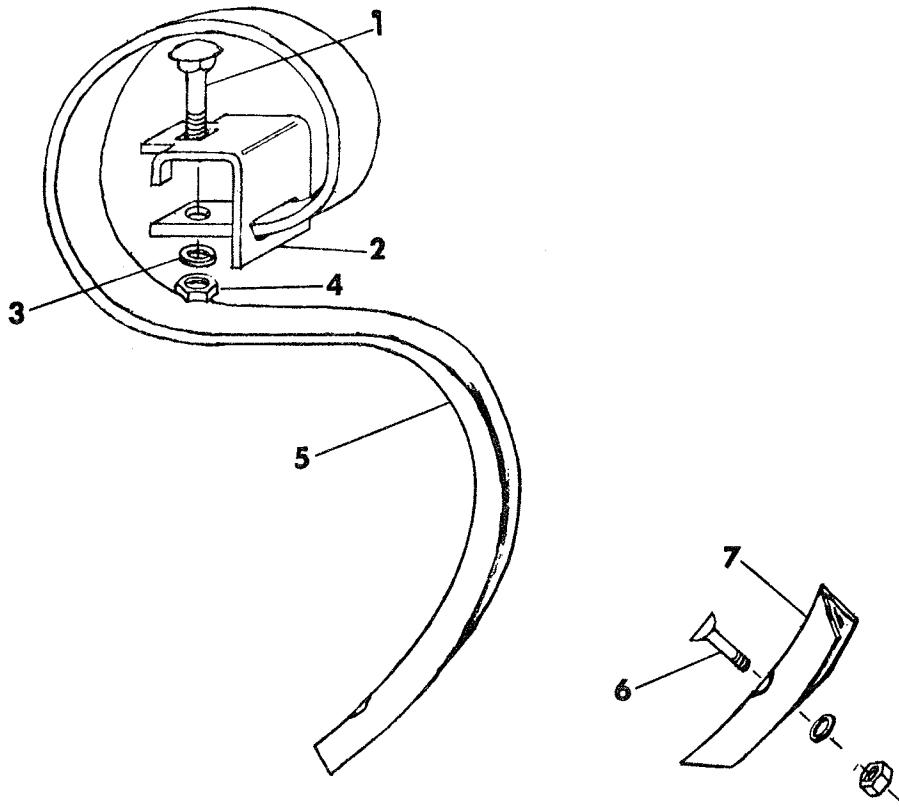
Figure 4

LIFT MECHANISM

Index No.	Part No.	Description	No. Req'd.	Weight
1	6D-641	Hydraulic Lift Cross Frame	1	118.5
2	6D-655	Lift Arm	2	56.3
3	6C-703	Clevis Pin	2	1.0
4	6D-656	Lift Arm Tie Strap	2	7.5
5	6D-758	Capscrew (3/4 x 3-1/2 Long, Grade 5)	4	
6	6D-680	Lift Link	2	34.7
7	6D-742	Capscrew (3/4 x 3 Long, Grade 5)	2	
8	6D-659	Wing Travel Link Tube	1	8.0
9	6D-662	Wing Travel Link Clevis	1	6.0
10	5D-871	Capscrew (1/2 x 3-1/2 Long, Grade 5)	2	
11	8C-528	Capscrew (1/2 x 3 Long, Grade 5)	1	
12	6D-720	Transport Pin	1	.2
*	4C-856	Hairpin Cotter (for transport pin)	1	
13	6D-716	Flow Restrictor	1	.3
14	6D-724	Hydraulic Cylinder	1	42.0
15	6D-725	Hydraulic Hose	2	5.2
16	6D-663	Hinge Brace	2	14.8
17	3D-510	Capscrew (3/4 x 2-1/2 Long, Grade 5)	2	
*	6C-729	Lock Nut (3/4-10 NC, Grade B)	8	
*	5C-392	Lock Nut (1/2-13 NC, Grade B)	3	

TRANSPORT AXLE

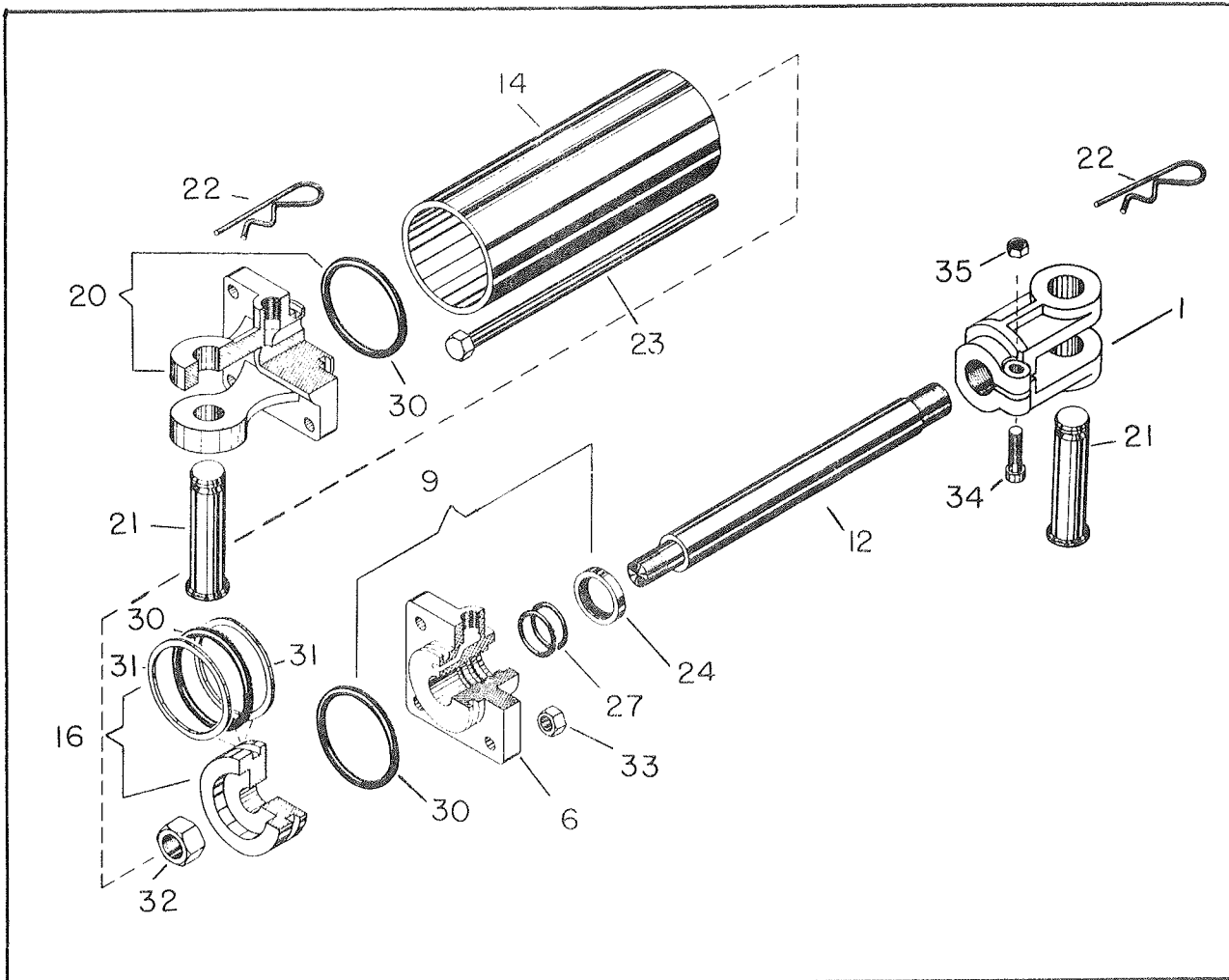
1	3J-168	Dual Axle, 3/4 Brg., Complete W/Hubs	1	225.0
2	6C-703	Clevis Pin	3	1.0
3	6D-695	Travel Link Strap	2	1.0
4	6D-476	Capscrew, 5/8 x 2-1/4, Gr. 5	1	
5	5C-907	Washer	2	
	5C-461	Locknut, 5/8 Hex	1	
6	1D-273	Grease Seal	4	.1
7	5C-480	Bearing Cone	4	.2
8	5C-479	Bearing Cup	4	.2
9	1J-390	Hub, 3/4 Brg.	4	8.6
10	5C-912	Bearing Cup, 3/4 Brg.	4	.2
11	5C-911	Bearing Cone, 3/4 Brg.	4	.3
12	3C-173	Slotted Nut	4	.1
13	4C-129	Wheel, 15 inch - 5 bolt	4	16.0
14	1J-463	Hub Cap, 3/4 Brg.	4	.2
15	5C-100	Wheel Bolt	20	.1



BRILLION SPRING TINE REPAIR PARTS LIST

Index No.	Part No.	Part Name	Weight
1	2J-241	Carriage Bolt, 7/16-14 NC x 3-1/2 Lg. Grade 5	.84
2	1J-834	Clamp	
3	1C-314	Lockwasher, 7/16 Std.	
4	1D-14	Nut, 7/16-14 NC Reg. Hex Lock	
5	1J-887	Spring Tine (Less points)	
6	7D-728	Cultivator Bolt, 3/8-16 NC x 1-1/2 Lg. #8 Head	6.0
	7D-729	Flat Washer, 3/8 Heavy Std.	
	7D-730	Nut, 3/8-16 NC Heavy Hex.	
7	2J-155	Heavy Duty Reversible Point	.6

<u>Machine Width</u>	<u>No. of Tines Per Machine</u>
22'8" (With 4" spacing)	67
22'8" (With 6" spacing)	45
24'8" (With 4" spacing)	73
24'8" (With 6" spacing)	49



HYDRAULIC CYLINDER REPAIRS

Index No.	Part No.	Description	No. Req'd.
	8D-45	Complete Seal Kit (Includes 24, (2) 27, (3) 30, (2) 31)	1
1	8D-46	Clevis	1
6	8D-47	Head	1
9	8D-48	Head Assembly	1
12	8D-49	Rod	1
14	8D-50	Tube	1
16	8D-51	Piston Assembly (Piston, ring & seal)	1
20	8D-52	Clevis Assembly - Base	1
21	6D-412	Cylinder Pin	2
22	6D-413	Clip - Pin	2
23	8D-53	Tie Rod	4
24	8D-54	Seal - Wiper	1
27	8D-55	O-Ring	2
30	8D-56	O-Ring	3
31	8D-57	Seal - Backup	2
32	8D-58	Nut - Piston	1
33	1C-390	Nut - Tie Rod	8
34	7C-937	Capscrew	1
35	1C-277	Nut	1

3J-250

10

(

()