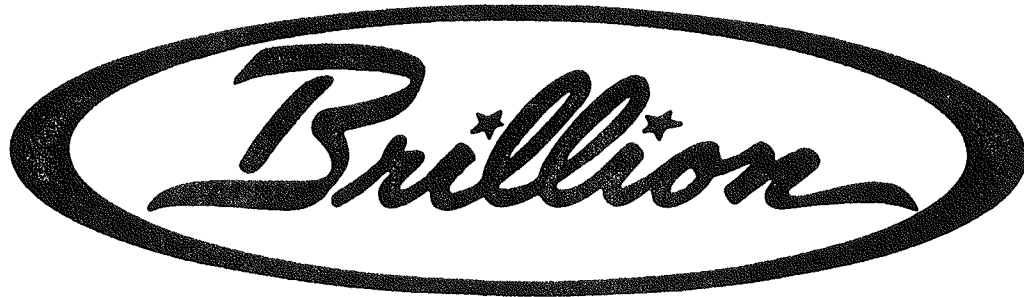


# REPAIR PARTS CATALOG



## CART MOUNTED HARROW

STC-8, STC-81 & STC-81-1

STCW-4  
STCW-6  
STCW-8

MODEL NO.

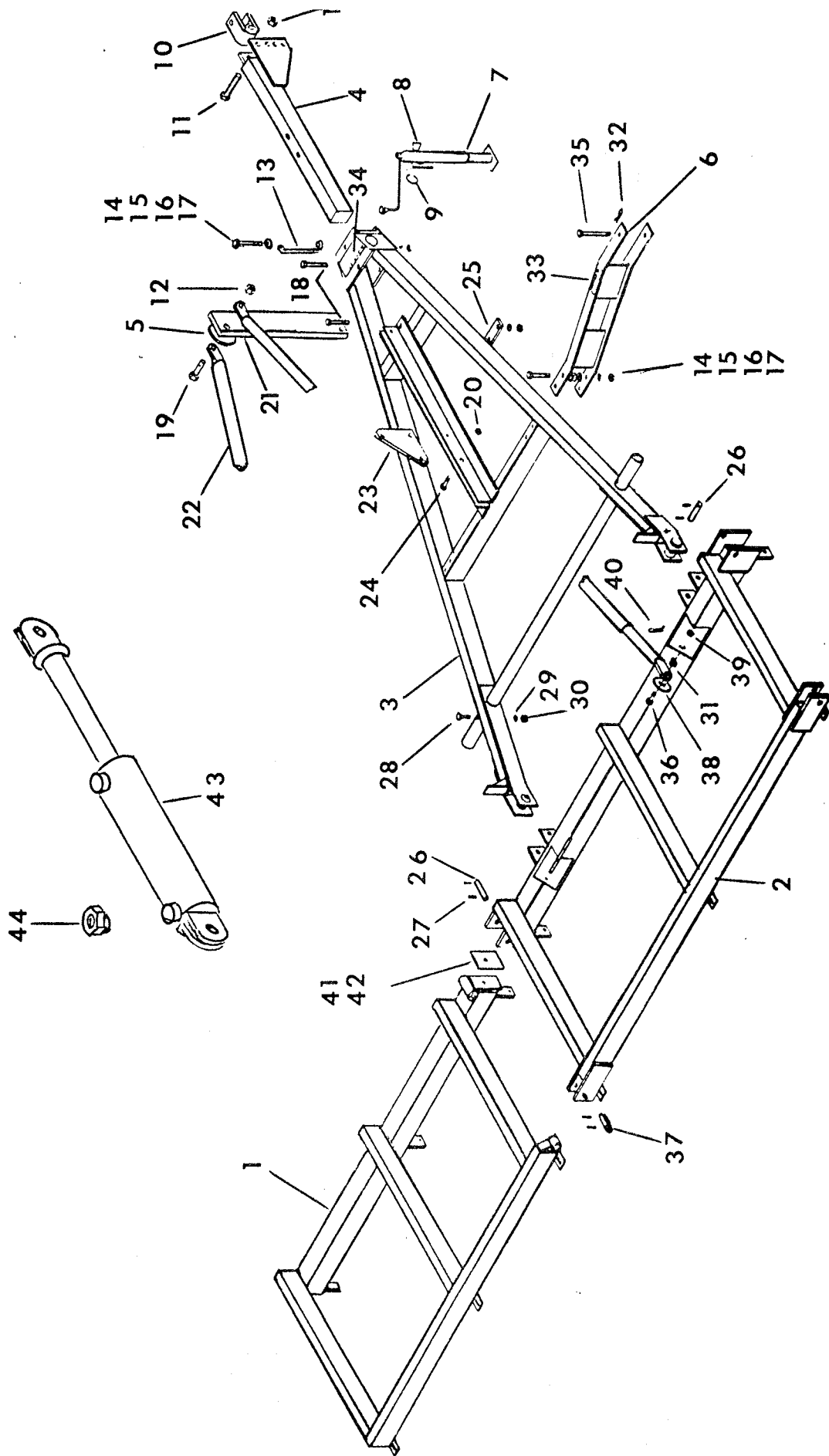
DATE PURCHASED

### IMPORTANT!

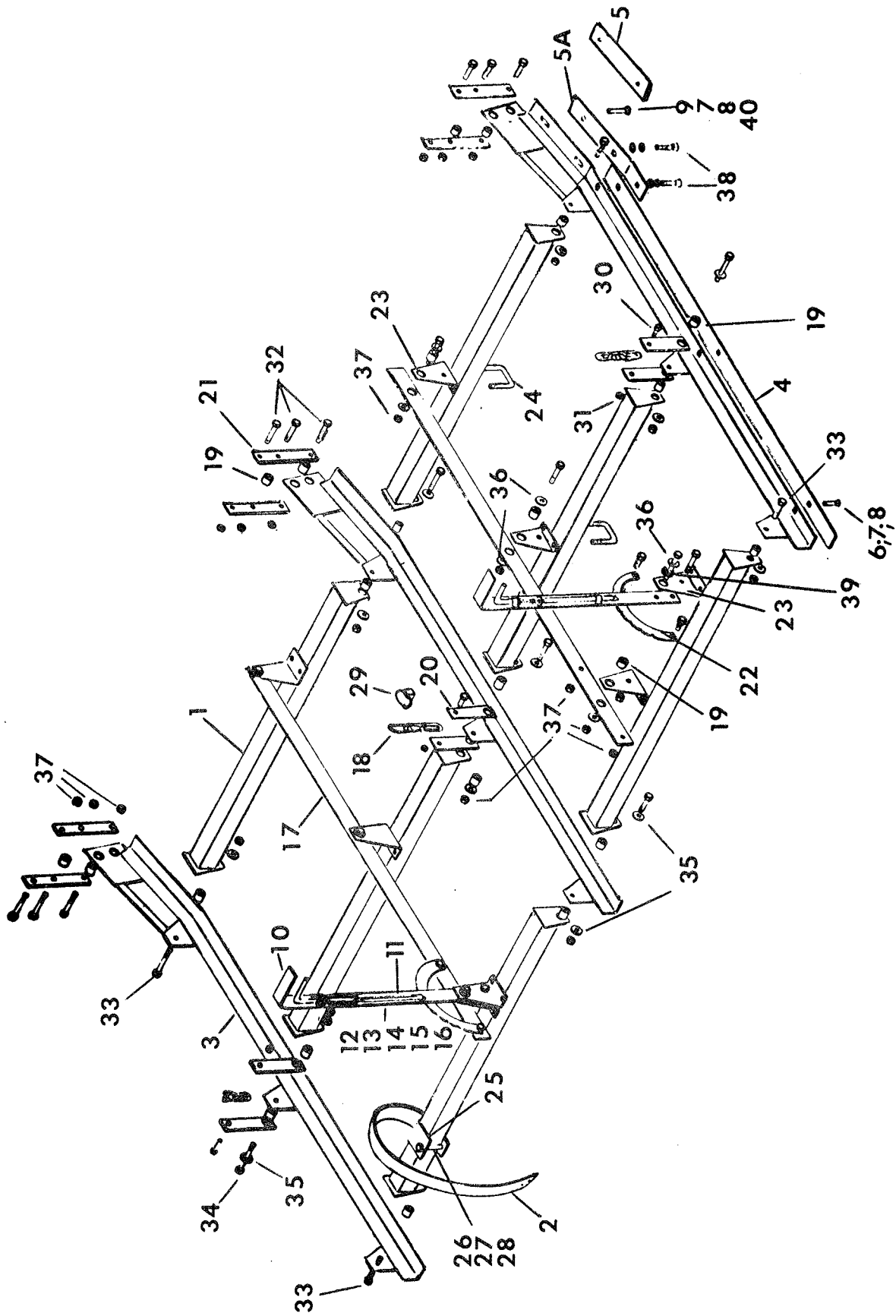
Repairs cannot be purchased retail direct from factory. Order through your Brillion dealer or any established implement dealer.

**BRILLION IRON WORKS, INC.**  
BRILLION, WISCONSIN 54110



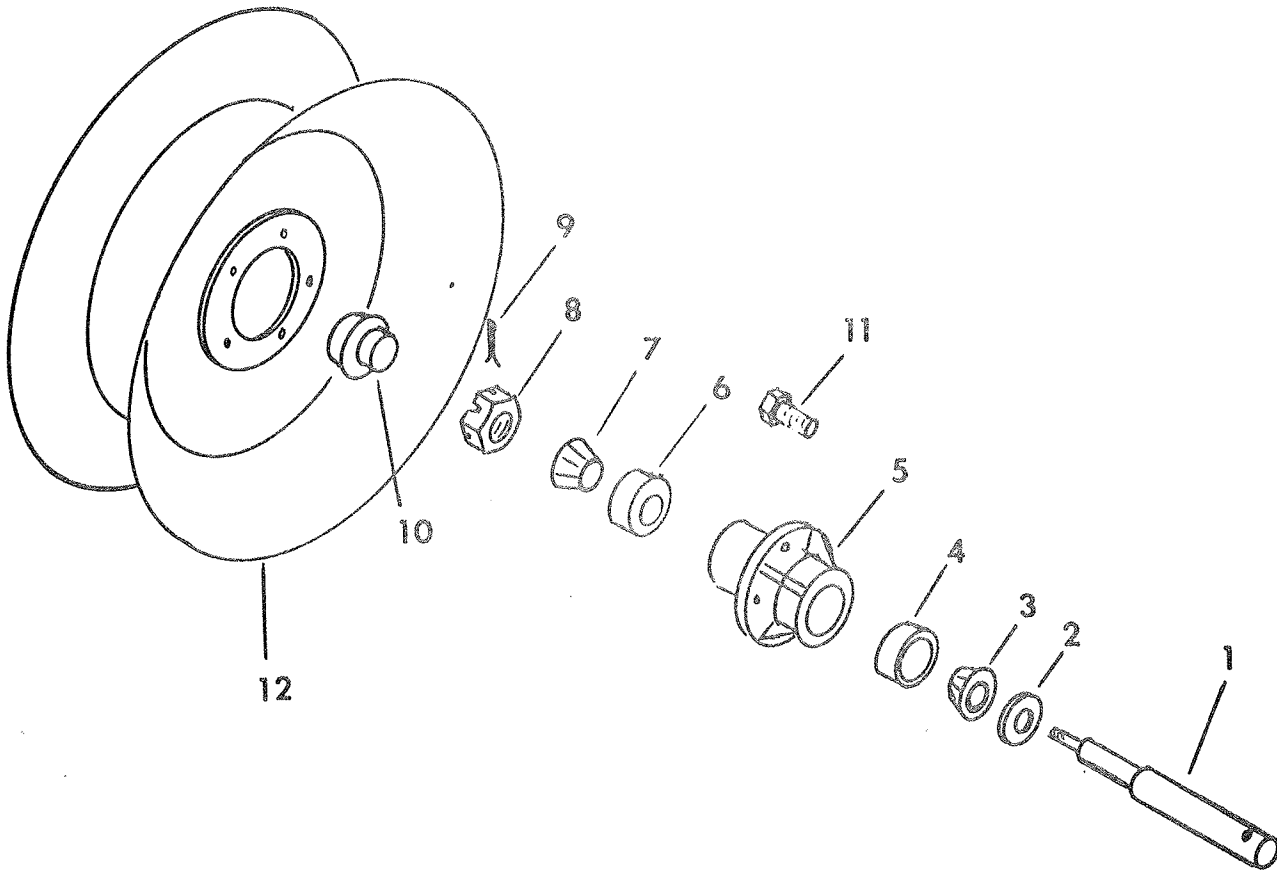


FRAME COMPONENTS				
Index No.	Part No.	Description	No. Used	Weight
1.	5J-391	Wing L.H. 8'	1	240
	5J-390	Wing R.H. 8'	1	240
	5J-403	Wing L.H. 6'	1	191
	5J-402	Wing R.H. 6'	1	191
	5J-406	Wing L.H. 4'	1	133
	5J-405	Wing R.H. 4'	1	133
2.	5J-389	Center Frame	1	315
3.	6J-678	Drawbar Weldment (16" Cyl.)	1	422
	5J-395	Drawbar Weldment (8" Cyl.)		402
4.	6J-569	Hitch (56" Long-Used on 20' and 24' models)	1	68
	5J-397	Hitch (40" Long - Used on 16' models)		55
5.	1C-787	Washer 1"	2	
6.	5J-453	Wing Bracket	2	32
7.	8D-391	Jack	1	10.5
8.	8D-399	Plunger	1	
9.	8D-390	Snap Ring	1	
10.	6D-697	Clevis	1	9.5
11.	6D-740	Bolt (1 x 5 1/2) Grade 5	1	1.5
12.	6D-306	Lock Nut 1"	2	.2
13.	6D-333	Hose Holder	1	2.7
14.	9C-59	Bolt (5/8 x 7) Grade 5	5	.6
15.	1C-122	Flat Washer (5/8")		
16.	1B-166	Lockwasher (5/8" Med.)	8	
17.	1C-392	Nut (5/8")	8	.1
18.	6D-355	Bolt (5/8 x 6) Grade 5	3	.5
19.	8D-922	Bolt (1 x 4 1/2) Grade 5	1	1.0
20.	6C-729	Locknut (3/4)	3	.1
21.	6J-679	Lift Arm (16" Cyl.)	1	42
	5J-462	Lift Arm (8"Cyl.)		42
22.	5J-463	Lift Link	2	35
23.	5J-471	Cylinder Anchor	1	12
24.	6D-742	Bolt (3/4 x 3) Grade 5	3	.4
25.	4J-412	Plate	1	1.2
26.	6J-580	Pin	4	1.4
27.	2J-600	Roll Pin	12	
28.	8C-528	Capscrew (1/2 x 3) Grade 5	2	.2
29.	1C-109	Lockwasher	2	
30.	1C-390	Nut (1/2")	2	
31.	6J-557	Bushing	2	.1
32.	4C-856	Hair Pin Clip	2	
33.	2J-578	Caution Decal	2	
34.	5J-486	Danger Decal	1	
35.	3J-860	Drilled Bolt (5/8 x 7 1/2) Grade 5	2	.6
36.	5D-575	Drilled Bolt (3/4 x 2 1/2) Grade 5	2	.3
37.	5J-499	Pin	2	.8
38.	1C-133	Washer (3/4")	2	
39.	1C-379	Slotted Nut (3/4")	2	
40.	1C-205	Cotter Pin (5/32 x 1 1/2)	2	
41.	6J-538	Shim 1/32" Thick		
42.	6J-539	Shim 1/16" Thick		
*	1C-103	Capscrew (1/4" x 1)	2	
*	1C-354	Lockwasher 1/4"	2	
43.	9D-137	Hydraulic Cylinder (3 x 16 DA)	1	
44.	6D-716	Flow Restrictor (1/16" Orifice)	1	



SKID COMPONENTS			
Index No.	Part No.	Description	Weight
1	5J-393	Toothbar - 4'	13.0
	5J-404	Toothbar - 3'	10.0
2	5J-400	Spring Tooth	5.8
3	5J-422	Runner	20.5
4	5J-423	Wear Strip (50-1/4" Long used w/6J-572 shoe)	7.2
	6J-663	Wear Strip (48-1/2" Long used w/6J-664 shoe)	6.9
5	6J-572	Shoe (3/8 x 2 x 12-1/2" Straight)	2.7
5A	6J-664	Shoe (3/8 x 2 x 15 with Bend)	3.2
6	5J-425	Plow Bolt 7/16" x 1-1/4" #3 Head	
7	1C-179	Nut (7/16"-14 NC)	
8	1C-314	Lockwasher (7/16" Med.)	
9	6J-665	Carriage Bolt (7/16" x 1-1/2" Grade 5)	
10	5J-435	Lever Weldment	4.3
11	5J-436	Lock Rod	.6
12	2C-322	Lock Rod Bracket	
13	3C-28	Drive Screw	
14	2C-323	Hand Lift Spring	
15	1C-182	Washer (3/8" Standard)	
16	1C-272	Roll Pin (1/8 Dia. x 3/4")	
17	5J-452	Tie Bar	9.4
18	3J-951	Chain	.3
19	5J-445	Bushing (5/8" Long)	
20	5J-448	Strap	.6
21	5J-449	Strap	.7
22	5J-446	Quadrant	1.3
23	5J-468	Bracket	1.5
24	5D-921	U-Bolt	.4
25	6J-974	Tooth Clamp	1.2
26	5D-871	Capscrew (1/2 x 3-1/2" Grade 5)	.2
27	1C-109	Lockwasher (1/2" Med.)	
28	1C-390	Nut (1/2-13 NC)	
29	5D-110	Klik Pin	
30	4D-904	Capscrew (3/8 x 1-1/2" Grade 5)	
31	5C-954	Locknut (3/8-16 NC)	
32	1J-486	Capscrew (1/2 x 2-1/4" Grade 5)	
33	5D-51	Capscrew (1/2 x 1-3/4" Grade 5)	
34	6D-744	Capscrew (1/2 x 2-3/4" Grade 5)	
35	5J-492	Washer (17/32 I.D., 1-1/4 O.D., 3/16 Thick)	
36	1C-120	Washer (1/2" Standard)	
37	5C-392	Locknut (1/2-13 NC)	
38	8D-301	Plow Bolt (7/16 x 1-1/2 #3 Head)	
39	6J-456	Bushing (1/4" Long)	
40	6D-340	Flat Washer (7/16" SAE)	

WHEEL COMPONENTS				
Index No.	Part No.	Description	No. Used	Weight
1.	5J-467	Spindle	1	8.5
2.	1D-273	Seal	1	.1
3.	5C-480	Cone (Timken #LM48548)	1	.2
4.	5C-479	Cup (Timken #LM48510)	1	.2
5.	1J-390	Hub	1	8.6
6.	5C-912	Cup (Timken #LM11910)	1	.2
7.	5C-911	Cone (Timken #LM11949)	1	.3
8.	3C-173	Slotted Nut	1	.1
9.	3C-350	Cotter Pin	1	
10.	1J-463	Hub Cap	1	.2
11.	5C-100	Wheel Bolt	1	.1
12.	4C-129	Wheel 15 x 5	1	16.
	6J-189	Flotation Wheel 15 x 8	1	24.



## CYLINDER IDENTIFICATION

1. Determine style of cylinder. Welded construction or tie rod construction. Tie rod construction has four long bolts running the length of the cylinder to hold the cylinder together. Welded construction has base welded to the tube.
2. Determine size of cylinder - completely retract cylinder measure distance from center of one attaching pin to other attaching pin. Measure outside diameter of tube and subtract  $3/8$ " or  $1/2$ " to get even dimension. The cylinder diameter is in even sizes - 3", 3- $1/2$ ", 4". So a tube that measures 3- $7/8$ " O.D. is a 3- $1/2$ " cylinder. Series cylinders are an exception, and are usually sized in  $1/4$ " increments such as 5", 4- $3/4$ ", 4- $1/2$ ", etc.
3. Measure rod size.
4. Look in index of this book to find machine used and location of cylinder on machine. Turn to the particular cylinder and find cylinder type. Check cylinder size, retracted length and rod size. When all these items check, the cylinder is identified.

Study cylinder construction, these drawings reflect as accurately as possible the actual construction of the cylinder.

HYDRAULIC CYLINDER USAGE INDEX

	<u>Page No.</u>
6D-138	Wing Raising on STS & STR Harrows - - - - - 3
6D-724	Wing Raising on HSD-360 Harrow
	Machine Raising WP-108, WPW-128 Pulverizer - - - - - 4
9D-137	Folding Toolbar BRSF & BSFF Ro-Crop Cultivator
	Folding Toolbar BRCF-6402, BRCF-8302, BRCF-8402
	Wing Raising on Soil Builder (15 & 17 Shank)
	Folding Toolbar BCFF Ro-Crop Cultivator
	Machine Raising X-108 Pulverizer - - - - - 5
9D-282	Hitch Cylinder WM-2601 & 3001, WM-2602 & 3002
	Machine Raising Kit on SST-961, SST-1201 & SSLFT-120-
9D-327	Folding Toolbar BRSF-12302 Ro-Crop Cultivator - - - - - 6
9D-524	Wing Raising WM-2601
	Machine Raising WM-2601 Beginning 8/1/76, WM-3002
	Machine Raising on ML Mulcher
	Wing Raising WP-108, WPW-128 Pulverizer
	Machine Raising XL-144 Pulverizers
	Wing Raising (SG-24 to SG-30) Soil Groomer - - - - - 8 - 9
9D-731	Wing Raising WM-3001, WM-3002 Mulcher
	Machine Raising WM-3001, Beginning 8/1/76, WM-3002
	Machine Raising WM-360 - - - - - 10
9D-762	SST-144 Seeder - - - - - 11
2J-674	Machine Raising on Soil Builder (5-11 Shank) - - - - - 12 - 13
3J-567	Hitch Cylinder WM-360 - - - - - 14
3J-568	Wing Raising WM-360 - - - - - 15
3J-603	Tooth Depth Control WM-360 - - - - - 16
	Machine Raising on Flail Shredder
3J-815	Machine Raising on FCF Field Cultivator - - - - - 17 - 18
3J-816	Machine Raising on FCF Field Cultivator - - - - - 19 - 20
3J-817	Machine Raising on FCF Field Cultivator - - - - - 21 - 22
3J-818	Wing Raising on FCF Field Cultivator - - - - - 23
4J-657	Wing Raising on Cultivator-Incorporator - - - - - 24
4J-658	Machine Raising on Cultivator-Incorporator
	Machine Raising on (SG-24 to SG-30) Soil Groomer - - 25
4J-659	Machine Raising on Cultivator-Incorporator
	Machine Raising on (SG-24 to SG-30) Soil Groomer- - - 26
4J-660	Machine Raising on Cultivator-Incorporator
	Machine Raising on (SG-24 to SG-30) Soil Groomer- - - 27
4J-661	Machine Raising on Cultivator-Incorporator
	Machine Raising on (SG-12 to SG-30 & SGH-24) Soil Groomer (Except SG-24) - - - - - 28
5J-128	Machine Raising on Soil Builder (13, 15 & 17 Shank) - 29
5J-280	Machine Raising on TPW Pulverizers - - - - - 30 - 31
	Hydraulic Coulter Depth Control Option for Soil Builder (7-11 Shank)
5J-830	Wing Raising on (XLW-120 & XLW-144) Pulverizer - - - 32
5J-835	Same as 9D-524 BIW with Side Ports
	Folding Tool Bar BCFF-1230 Ro-Crop Cultivator
	Wing Raising WM-2602 Mulcher
	Wing Raising (SG-18 to SG-21) Soil Groomer - - - - - 8 - 9
6J-11	Machine Raising on (SG-12 to SG-21) Soil Groomer- - - 33
6J-12	Machine Raising on (SG-12 to SG-30 & SGH-24) Soil Groomer 34
6J-216	Wing Raising on (XLW-84 to XLW-108) Pulverizer - - - 35
6J-811	Wing Raising on (XW-84 to XW-108) Pulverizer Wings- - 36
6J-812	Wing Raising on (XW-60 & XW-72) Pulverizer Wings - - 37



HYDRAULIC CYLINDER USAGE INDEX (cont'd)

		<u>Page No.</u>
7J-194	Machine Raising on (SGH-18 & SGH-21) Soil Groomer - - -	38
7J-195	Machine Raising on (SGH-18 & SGH-21) Soil Groomer - - -	39
7J-680	Machine Raising on Extended Frame Soil Builders - - - -	40
8J-782	Machine Raising on (SG-121 to SG-211) Soil Groomers, after 1-25-88 - - - - -	41
8J-783	Machine Raising on (SG-121 to SG-301 & SGH-241) Soil Groomers, after 1-25-88 - - - - -	42
8J-784	Machine Raising on (SG-121 to SG-301 & SGH-241, except SG-241) Soil Groomers, after 1-25-88. - - - - -	43
	Machine Raising, Cultivator-Incorporator after 1-25-88.	

<u>Code Letter</u>	<u>Manufacturer</u>
BIW	Brillion Iron Works
G	Hydraulic Gear
L	Lantex
P	Prince

9D137 G Hydraulic Cylinder 3 x 16

Hydraulic Gear #3016-01 Painted Red

1-3/8 Dia. Rod, 26-1/4 Retracted, 42-1/4 Extended Length

Item	Part No.	Description	Qty.
1	1J-962	Tube Assembly	1
*2	NSS	O Ring	2
*3	NSS	Back-Up Ring	3
4	1J-963	Gland	1
*5	NSS	Rod Seal & Back-Up Rings	1
*6	NSS	Wiper	1
7	5J-650	Cylinder Pin	2
8	4C-856	Hairpin Cotter	4
9	1J-964	Rod Assembly	1
*10	NSS	O Ring	1
11	1J-965	Piston	1
12	6C-750	Hex Nut 7/8-14 Lock	1
*	1J-966	Seal Kit (Items Marked "**")	

NSS - Not Serviced Separately

