

REPAIR PARTS CATALOG



CART MOUNTED HARROW

STC-82

STCW-4

STCW-6

STCW-8

MODEL NO.

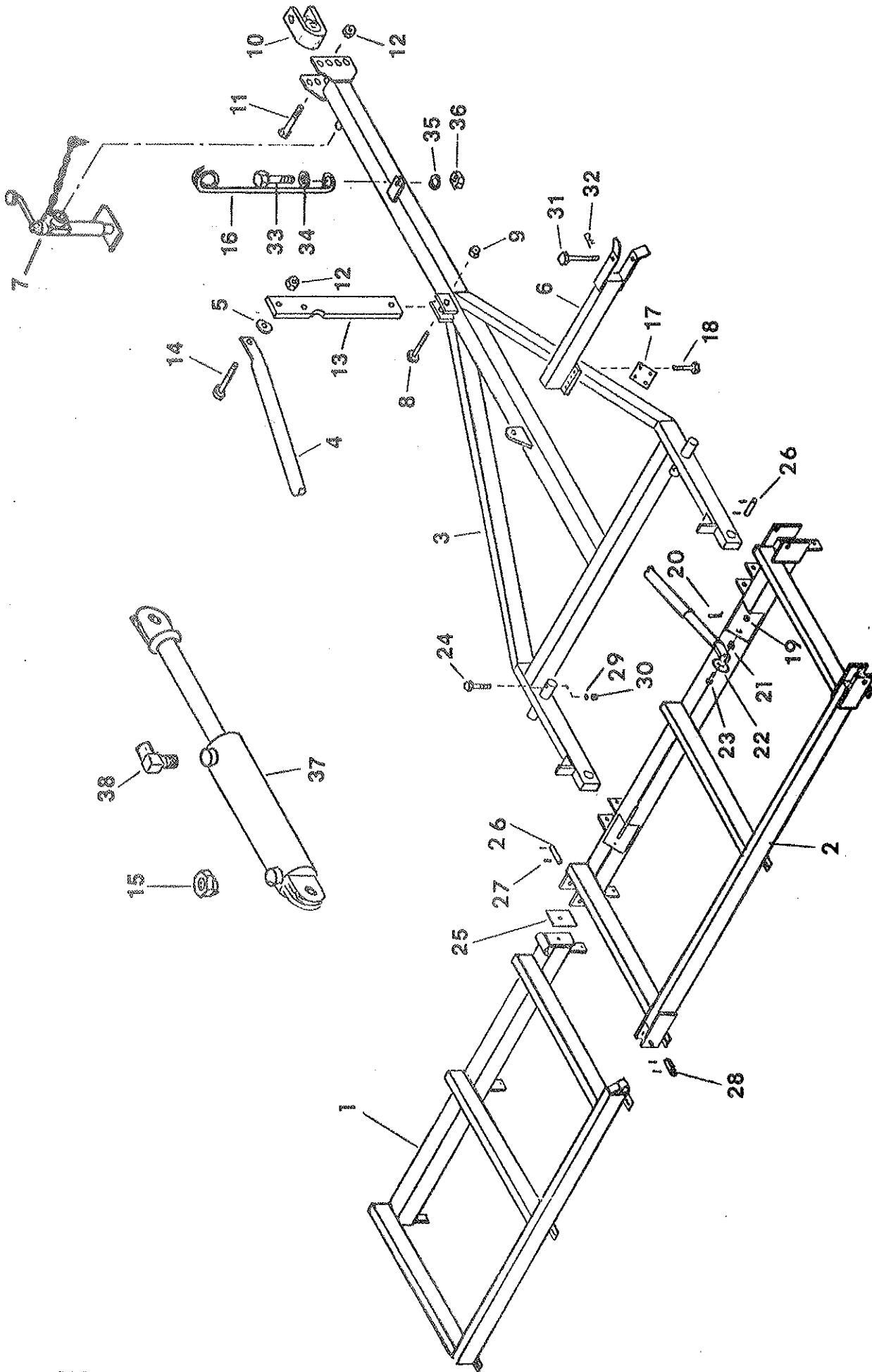
DATE PURCHASED

IMPORTANT!

Repairs cannot be purchased retail direct from factory. Order through your Brillion dealer.

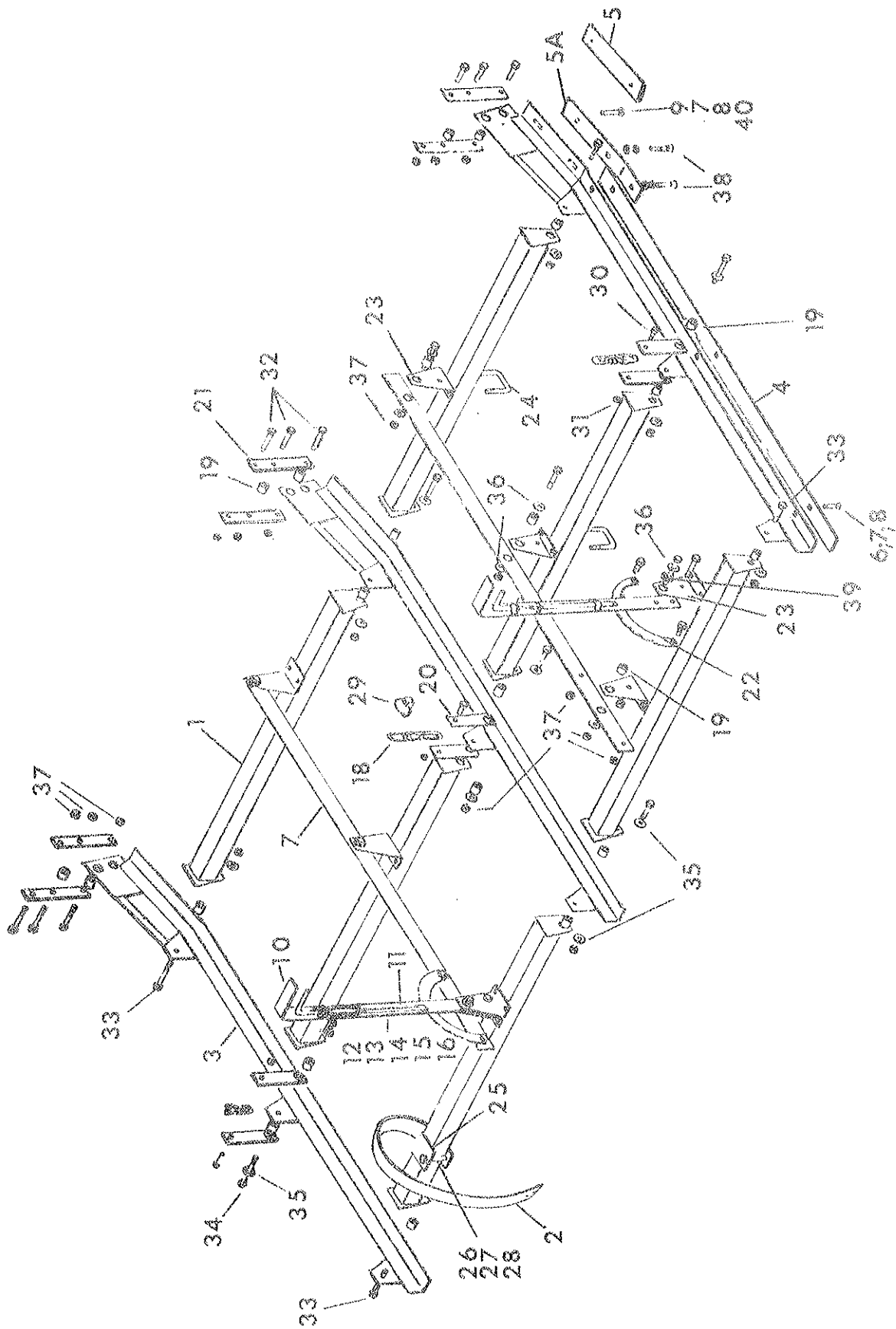


BRILLION IRON WORKS, INC.
BRILLION, WISCONSIN 54110



FRAME COMPONENTS

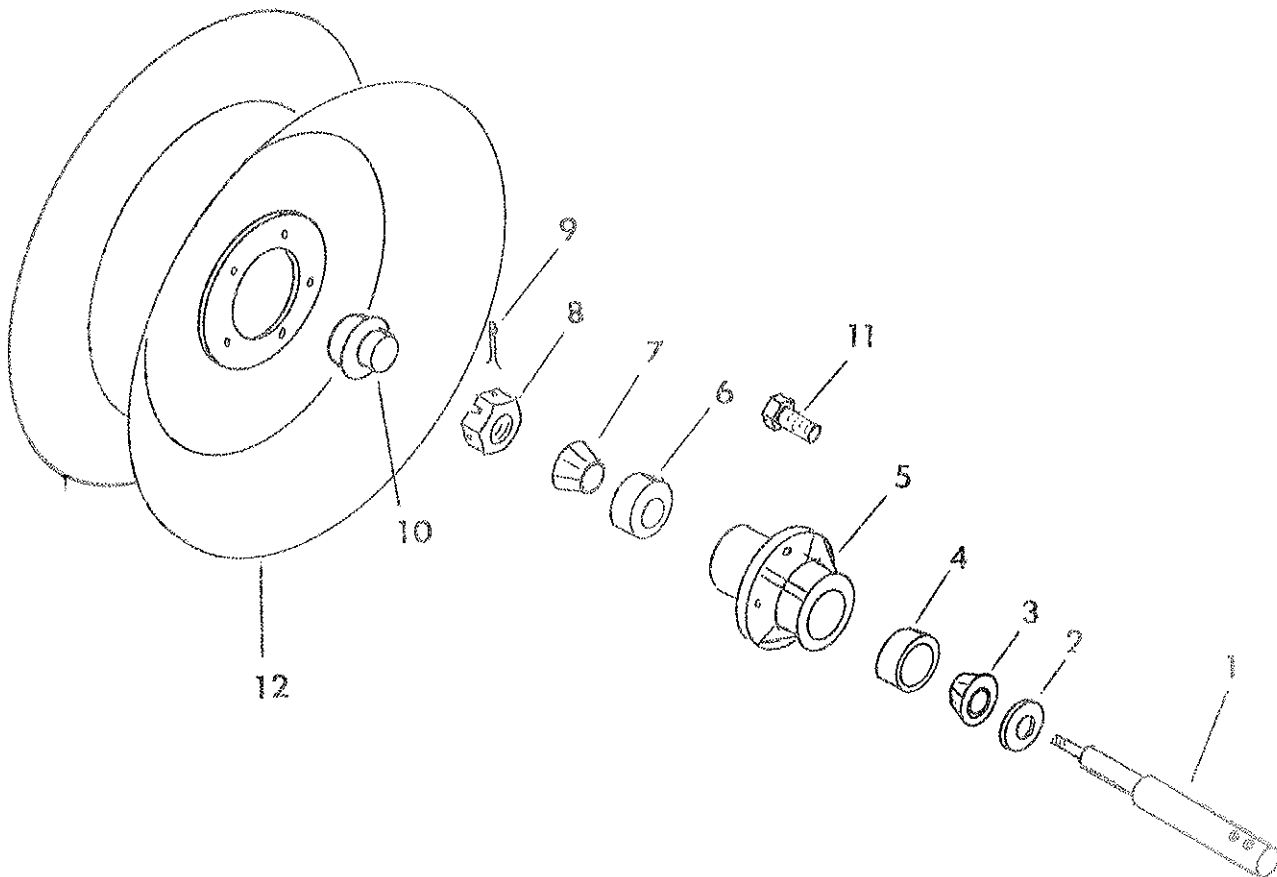
Index No.	Part #	Description	No. Used	Weight
1	5J-391	L.H. Wing, 8'	1	240
	5J-390	R.H. WING, 8'	1	240
	5J-403	L.H. WING, 6'	1	191
	5J-402	R.H. WING, 6'	1	191
	5J-406	L.H. WING, 4'	1	133
	5J-405	R.H. WING, 4'	1	133
	2	5J-389	CENTER FRAME	1
3	7J-698	DRAWBAR WELDMENT	1	634
4	5J-463	LIFT LINK	2	35
5	1C-787	WASHER, 1"	2	-
6	7J-714	WING BRACKET	2	25
7	3J-880	JACK	1	17
8	6D-742	BOLT, 3/4 x 3" GRADE 5	1	.5
9	6C-729	LOCK NUT, 3/4"	1	.1
10	6D-879	CLEVIS	1	9.5
11	6D-287	BOLT, 1 x 6-1/2 GRADE 5	1	1.7
12	6D-306	LOCK NUT, 1"	2	.2
13	7J-710	LIFT ARM	1	25
14	8D-922	BOLT, 1 x 4-1/2" GRADE 5	1	1.0
15	6D-716	FLOW RESTRICTOR (1/16" ORIFICE)	1	.1
16	6D-333	HOSE HOLDER	1	2.7
17	7J-715	PLATE	2	2.7
18	1C-675	BOLT, 1/2 x 6"	8	.4
	1C-109	LOCK WASHER, 1/2"	10	-
	1C-390	NUT, 1/2"	10	-
	19	1C-379	SLOTTED NUT, 3/4"	2
20	1C-205	COTTER PIN	2	-
21	6J-557	BUSHING	2	.1
22	1C-133	WASHER, 3/4"	2	-
23	5D-575	DRILLED BOLT, 3/4 x 2-1/2" GRADE 5	2	.3
24	8C-528	BOLT, 1/2 x 3" GRADE 5	2	.2
25	6J-538	SHIM, 1/32" THICK	-	-
	6J-539	SHIM, 1/16" THICK	-	-
	1C-103	CAPSCREW, 1/4 x 1"	2	-
	1C-354	LOCK WASHER, 1/4"	2	-
	26	6J-580	HINGE PIN	4
27	2J-600	ROLL PIN	12	-
28	5J-499	PIN	2	.8
29	1C-109	LOCK WASHER, 1/2"	10	-
30	1C-390	NUT, 1/2"	10	-
31	3J-860	DRILLED BOLT, 5/8 x 7-1/2 GRADE 5	2	.6
32	4C-856	HAIRPIN COTTER	2	-
33	4D-561	BOLT, 5/8 x 1-1/2" GRADE 5	1	.2
34	1C-122	WASHER, 5/8"	1	-
35	1B-166	LOCK WASHER, 5/8"	1	-
36	1C-392	NUT, 5/8"	1	.1
37	9D-137	HYDRAULIC CYLINDER	2	29
38	2J-170	90° ELBOW	2	.2



SKID COMPONENTS			
Index No.	Part No.	Description	Weight
1	5J-393	Toothbar - 4'	13.0
	5J-404	Toothbar - 3'	10.0
2	5J-400	Spring Tooth	5.8
3	5J-422	Runner	20.5
4	5J-423	Wear Strip (50-1/4" Long used w/6J-572 shoe)	7.2
	6J-663	Wear Strip (48-1/2" Long used w/6J-664 shoe)	6.9
5	6J-572	Shoe (3/8 x 2 x 12-1/2" Straight)	2.7
5A	6J-664	Shoe (3/8 x 2 x 15 with Bend)	3.2
6	5J-425	Plow Bolt 7/16" x 1-1/4" #3 Head	
7	1C-179	Nut (7/16"-14 NC)	
8	1C-314	Lockwasher (7/16" Med.)	
9	6J-665	Carriage Bolt (7/16" x 1-1/2" Grade 5)	
10	5J-435	Lever Weldment	4.3
11	5J-436	Lock Rod	.6
12	2C-322	Lock Rod Bracket	
13	3C-28	Drive Screw	
14	2C-323	Hand Lift Spring	
15	1C-182	Washer (3/8" Standard)	
16	1C-272	Roll Pin (1/8 Dia. x 3/4")	
17	5J-452	Tie Bar	9.4
18	3J-951	Chain	.3
19	5J-445	Bushing (5/8" Long)	
20	5J-448	Strap	.6
21	5J-449	Strap	.7
22	5J-446	Quadrant	1.3
23	5J-468	Bracket	1.5
24	5D-921	U-Bolt	.4
25	6J-974	Tooth Clamp	1.2
26	5D-871	Capscrew (1/2 x 3-1/2" Grade 5)	.2
27	1C-109	Lockwasher (1/2" Med.)	
28	1C-390	Nut (1/2-13 NC)	
29	5D-110	Klik Pin	
30	4D-904	Capscrew (3/8 x 1-1/2" Grade 5)	
31	5C-954	Locknut (3/8-16 NC)	
32	1J-486	Capscrew (1/2 x 2-1/4" Grade 5)	
33	5D-51	Capscrew (1/2 x 1-3/4" Grade 5)	
34	6D-744	Capscrew (1/2 x 2-3/4" Grade 5)	
35	5J-492	Washer (17/32 I.D., 1-1/4 O.D., 3/16 Thick)	
36	1C-120	Washer (1/2" Standard)	
37	5C-392	Locknut (1/2-13 NC)	
38	8D-301	Plow Bolt (7/16 x 1-1/2 #3 Head)	
39	6J-456	Bushing (1/4" Long)	
40	6D-340	Flat Washer (7/16" SAE)	

WHEEL COMPONENTS

Index No.	Part No.	Description	No. Used	Weight
1.	5J-467	Spindle	1	8.5
2.	1D-273	Seal	1	.1
3.	5C-480	Cone (Timken #LM48548)	1	.2
4.	5C-479	Cup (Timken #LM48510)	1	.2
5.	1J-390	Hub	1	8.6
6.	5C-912	Cup (Timken #LML1910)	1	.2
7.	5C-911	Cone (Timken #LML1949)	1	.3
8.	3C-173	Slotted Nut	1	.1
9.	3C-350	Cotter Pin	1	
10.	1J-463	Hub Cap	1	.2
11.	5C-100	Wheel Bolt	1	.1
12.	6J-189	Flotation Wheel 15 x 8	1	24.



CYLINDER IDENTIFICATION

1. Determine style of cylinder. Welded construction or tie rod construction. Tie rod construction has four long bolts running the length of the cylinder to hold the cylinder together. Welded construction has base welded to the tube.
2. Determine size of cylinder-completely retract cylinder; measure distance from center of one attaching pin to other attaching pin. Measure outside diameter of tube and subtract $3/8$ " or $1/2$ " to get even dimension. The cylinder diameter is in even sizes - 3", 3- $1/2$ ", 4". So a tube that measures 3- $7/8$ " O.D. is a 3- $1/2$ " cylinder. Series cylinders are an exception, and are usually sized in $1/4$ " increments such as 5", 4- $3/4$ ", 4- $1/2$ ", etc.
3. Measure rod size.
4. Look in index of this book to find machine used and location of cylinder on machine. Turn to the particular cylinder and find cylinder type. Check cylinder size, retracted length and rod size. When all these items check, the cylinder is identified.
5. Study cylinder construction; these drawings reflect as accurately as possible the actual construction of the cylinder.

HYDRAULIC CYLINDER USAGE INDEX

		<u>Page No.</u>
6D-138	Wing Raising on STS & STR Harrows	3
6D-724	Wing Raising on HSD-360 Harrow Machine Raising WP-108, WPW-128 Pulverizer	4
9D-137	Folding Toolbar BRSF & BSFF Ro-Crop Cultivator Folding Toolbar BRCF-6402, BRCF-8302, BRCF-8402 Wing Raising on Soil Builder (15 & 17 Shank) Folding Toolbar BCFF Ro-Crop Cultivator Machine Raising X-108 Pulverizer	5
9D-282	Hitch Cylinder WM-2601 & 3001, WM-2602 & 3002 Machine Raising Kit on SST-961, SST-1201 & SSLFT-120	6
9D-327	Folding Toolbar BRSF-12302 Ro-Crop Cultivator	7
9D-524	Wing Raising WM-2601 Machine Raising WM-2601 Beginning 8/1/76, WM-3002 Machine Raising on ML Mulcher Wing Raising WP-108, WPW-128 Pulverizer Machine Raising XL-144 Pulverizers Wing Raising (SG-24 to SG-30) Soil Groomer	8-9
9D-731	Wing Raising WM-3001, WM-3002 Mulcher Machine Raising WM-3001, Beginning 8/1/76, WM-3002 Machine Raising WM-360	10
9D-762	SST-144 Seeder	11
2J-674	Machine Raising on Soil Builder (5-11 Shank)	12-13
3J-567	Hitch Cylinder WM-360	14
3J-568	Wing Raising WM-360	15
3J-603	Tooth Depth Control WM-360	16
3J603C	Machine Raising on Flail Shredder Tooth Control WL360 Pulvimulcher	16A
3J-815	Machine Raising on FCF Field Cultivator	17-18
3J-816	Machine Raising on FCF Field Cultivator	19-20
3J-817	Machine Raising on FCF Field Cultivator	21-22
3J-818	Wing Raising on FCF Field Cultivator	23
4J-657	Wing Raising on Cultivator-Incorporator	24
4J-658	Machine Raising on Cultivator-Incorporator Machine Raising on (SG-24 to SG-30) Soil Groomer	25
4J-659	Machine Raising on Cultivator-Incorporator Machine Raising on (SG-24 to SG-30) Soil Groomer	26
4J-660	Machine Raising on Cultivator-Incorporator Machine Raising on (SG-24 to SG-30) Soil Groomer	27
4J-661	Machine Raising on Cultivator-Incorporator Machine Raising on (SG-12 to SG-30 & SGH-24) Soil Groomer(Except SG-24)	28
5J-128	Machine Raising on Soil Builder (13, 15 & 17 Shank)	29
5J-280	Machine Raising on TPW Pulverizers	30-31
5J-830	Hydraulic Coultter Depth Control Option for Soil Builder (7-11 Shank) Wing Raising on (XLW-120 & XLW-144) Pulverizer	32
5J-835	Same as 9D-524 BIW with Side Ports Folding Tool Bar BCFF-1230 Ro-Crop Cultivator Wing Raising WM-2602 Mulcher Wing Raising (SG-18 to SG-21) Soil Groomer	8-9
6J-011	Machine Raising on (SG-12 to SG-21) Soil Groomer	33
6J-012	Machine Raising on (SG-12 to SG-30 & SGH-24) Soil Grm.	34
6J-216	Wing Raising on (XLW-84 to XLW-108) Pulverizer	35

9D137 G Hydraulic Cylinder 3 x 16
 Hydraulic Gear #3016-01 Painted Red
 1-3/8" Dia. Rod, 26-1/4 Retracted, 42-1/4 Extended Length

Item	Part No.	Description	Qty.
1	1J962	Tube Assembly	1
*2	NSS	O Ring	2
*3	NSS	Back-Up Ring	3
4	1J963	Gland	1
*5	NSS	Rod Seal & Back Up Rings	1
*6	NSS	Wiper	1
7	5J650	Cylinder Pin	2
8	6C468	Cotter Pin, 3/16" x 2"	4
9	1J964	Rod Assembly	1
*10	NSS	O Ring	1
11	1J965	Piston	1
12	6C750	Hex Nut 7/8-14 NF Lock	1
*	1J966	Seal Kit (Items marked "**")	
13	5J132	Spanner Wrench (Optional - Disassembly Tool)	

NSS = Not Serviced Separately

