

REPAIR PARTS CATALOG

FOR

Brillion

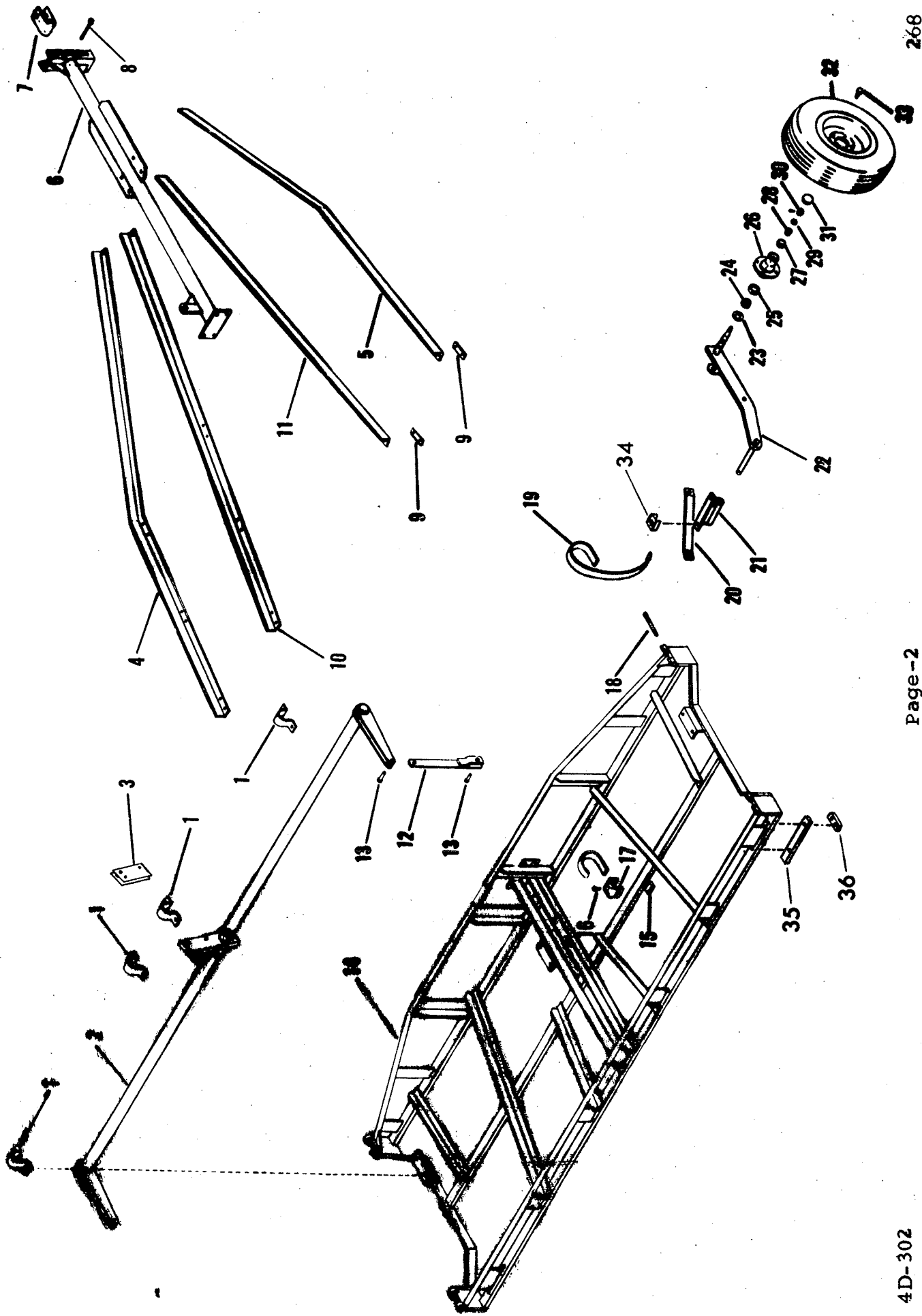
MODELS STH-8 THRU STH-20
MODELS STHH-8 THRU STHH-20
MODELS STHP-8 THRU STHP-20
MODELS STHHP-8 THRU STHHP-20
MODELS STHQ-8 THRU STHQ-20
MODELS STHHQ-8 THRU STHHQ-20

SPRING TOOTH HARROW

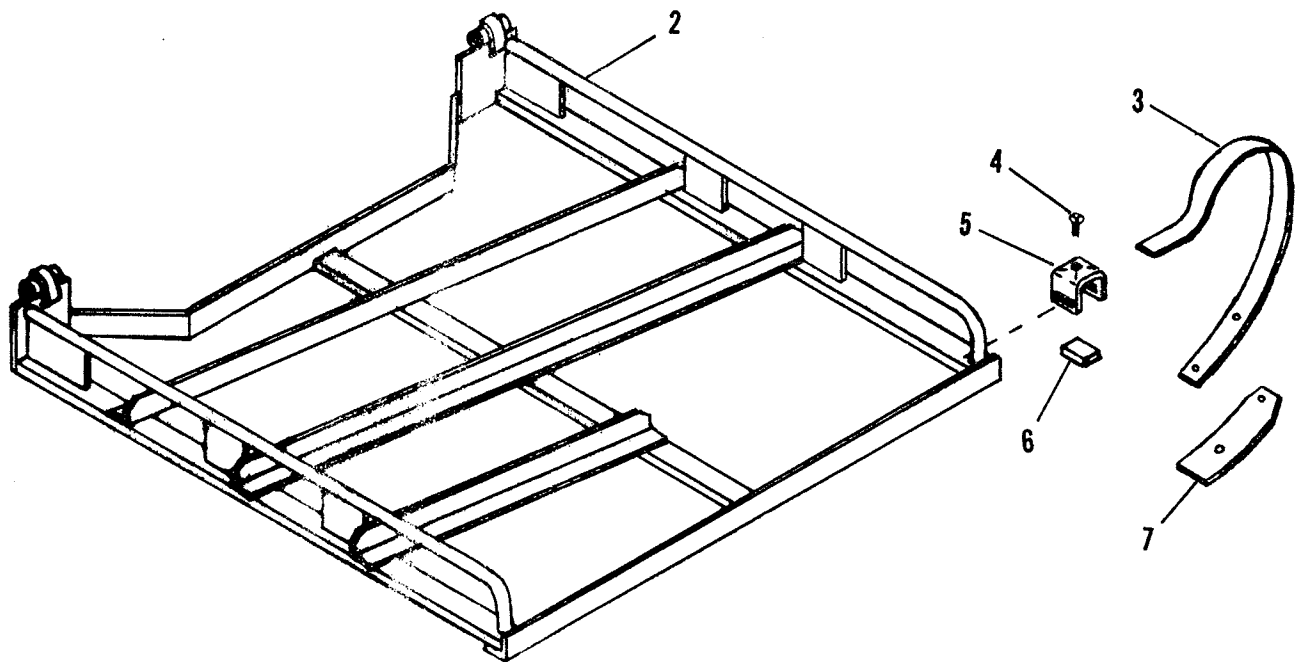
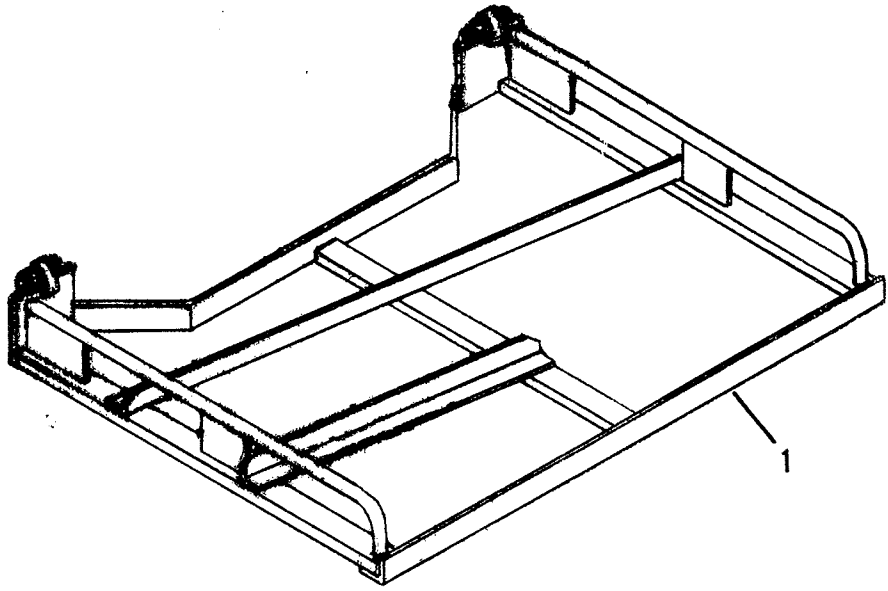
MODEL STH-04
MODEL STH-05

ALL PARTS NOT LISTED ARE STANDARD HARDWARE

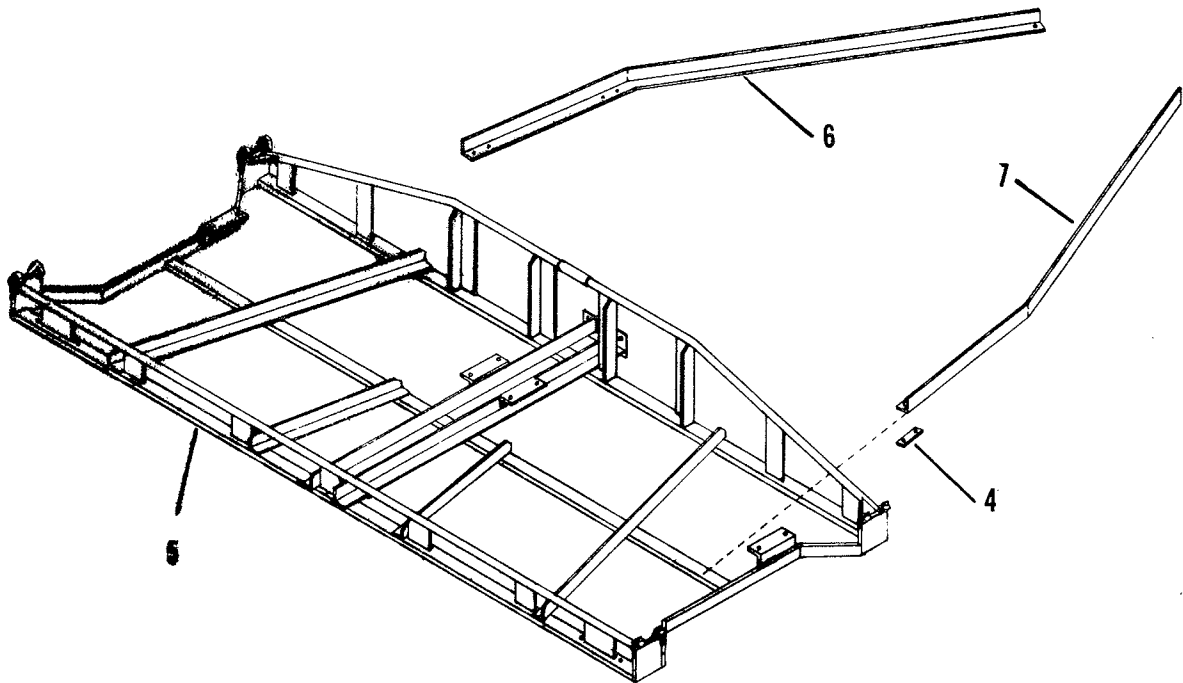
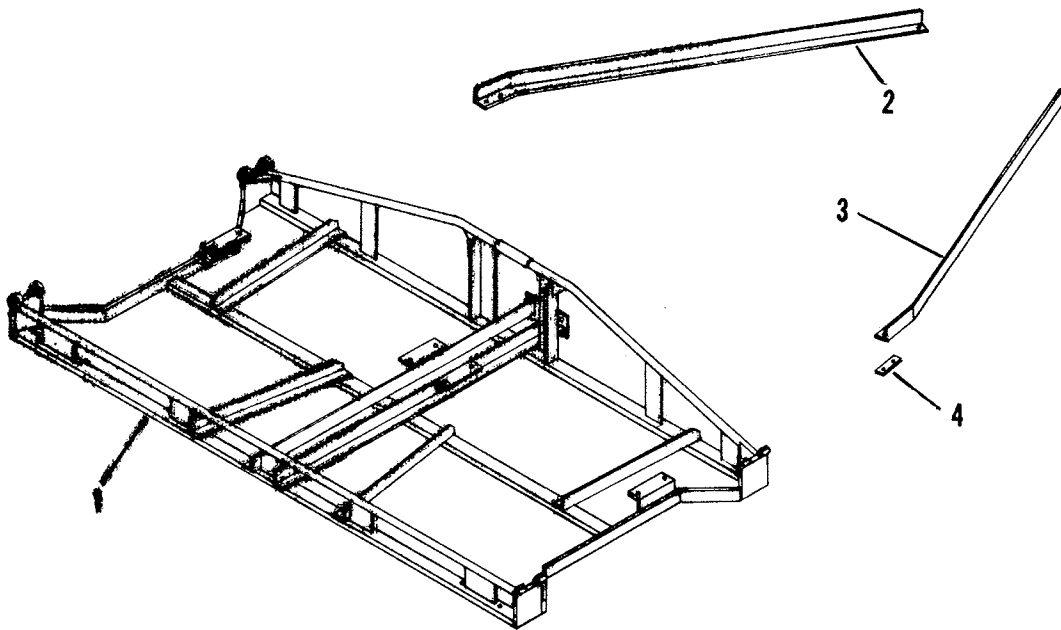
BRILLION IRON WORKS
BRILLION, WISCONSIN



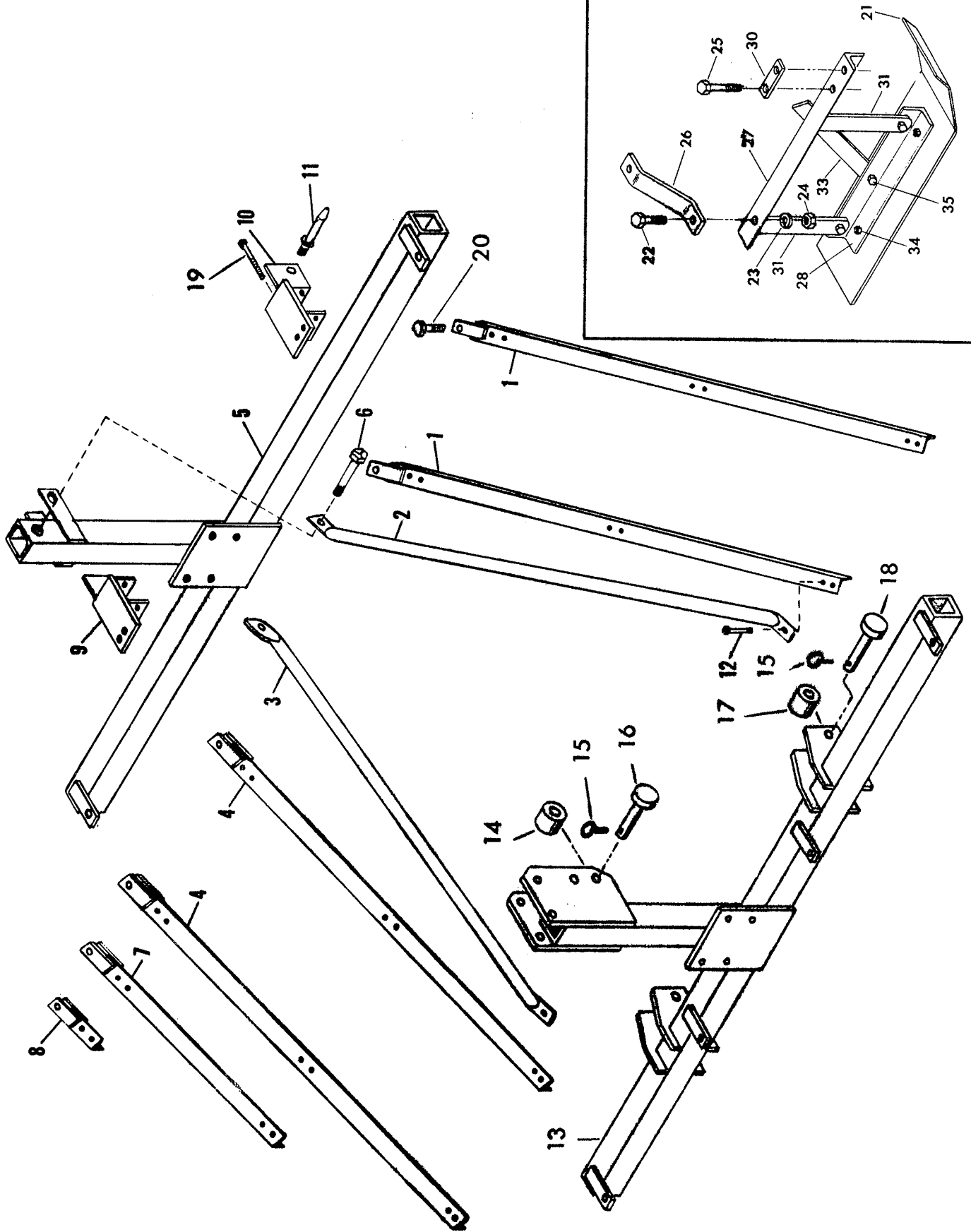
Index No.	Part No.	Description
1	3D-543	Bearing Clamp
2	3D-801	Rock Shaft Assembly - 8'
	3D-802	Rock Shaft Assembly - 10'
	3D-803	Rock Shaft Assembly - 12'
3	3D-798	Quick Hook-Up Assembly - 8 1/8 Long
4	2D-367	Frame Angle - L.H.
5	2D-366	Frame Angle - R.H.
6	2D-371	Drawbar
7	2D-349	Clevis
8	2D-488	Cap Screw (3/4-10 NC x 5" Long, Heat Treated)
*	6C-729	Locknut (3/4-10 NC)
9	2D-338	Strap (4-1/8" Long)
10	2D-356	Frame Angle - L.H.
11	2D-355	Frame Angle - R.H.
12	3D-593	Lift Link
*	4D-320	Lift Link (For 3 Point Hitch)
13	2D-473	Clevis Pin (3/4" x 1-7/8" Long)
14	4D-245	Frame Assembly - 12'
15	2D-362	Filler Block
16	2D-910	Set Screw (5/8-11 NC x 1-1/2" Long)
*	1C-383	Square Nut (5/8-11 NC)
17	2D-599	Spring Tooth Clamp - 2-1/2" Wide
	2D-848	Spring Tooth Clamp - 3" Wide
18	2D-475	Clevis Pin (3/4" x 5-1/2" Long)
19	3D-672	Spring Tooth - Standard (11/32" Thick)
	3D-673	Spring Tooth - Heavy Duty (3/8" Thick)
20	2D-871	Brace
*	7C-122	Machinery Bushing (18 Ga. x 1-1/4 I.D. x 1-7/8" O.D.)
21	2D-351	Axle Bearing
22	3D-548	Axle - R.H.
*	3D-547	Axle - L.H.
23	5C-910	Seal
24	5C-913	Bearing Cone (#LM67048)
25	5C-914	Bearing Cup (#LM67010)
26	5C-904	Wheel Hub
27	5C-912	Bearing Cup (#LM11910)
28	5C-911	Bearing Cone (#LM11949)
29	5C-907	Washer
30	5C-909	Slotted Nut
31	5C-908	Cap
32	8C-470	Wheel 14" - 4 Bolt (less tire & tube)
33	5C-100	Wheel Bolt
34	5D-152	Shim
35	5D-338	Bar
36	5D-337	Strap
	8C-528	Cap Screw - 1/2 x 3 (Grade 5)
	7C-875	Cap Screw - 1/2 x 2-1/2 (Grade 5)
		Cap Screw - 1/2 x 1-1/2
		} Use on pick-up model machines
*	8C-527	Cap Screw (1/2-13 NC x 1-1/2" Long - Heat Treated)
*	2D-551	Replacement Point (Can be used on worn 3D-672 or 3D-673 Spring Teeth)
*	2C-628	Plow Bolt (3/8-16 NC x 1-1/2 R.H. Sq. Neck)
*	3D-507	Skid Leveler Kit (Optional)
*	5C-392	Locknut (1/2-13 NC)



Index No.	Part No.	Description
1	4D=256	Frame Assembly - 3' L. H.
	4D=257	Frame Assembly - 3' R. H.
2	4D=258	Frame Assembly - 4' L. H.
	4D=259	Frame Assembly - 4' R. H.
3	2D=359	Spring - 3/8" Thick (Used W/3' Frame)
	5D=336	Spring - 7/16" Thick (Used W/4' Frame)
4	2D=910	Set Screw (5/8-11 NC, x 1-1/2" Long)
*	1C=383	Square Nut (5/8-11 NC)
5	2D=848	Spring Tooth Clamp - 3" Wide
6	2D=362	Filler Block
7	2D=360	Skid - 3" Wide
	2D=864	Skid - 4" Wide



Index No.	Part No.	Description
1	4D-251	Frame Assembly - 8'
2	3D-497	Frame Angle - L. H.
3	3D-496	Frame Angle - R. H.
4	2D-338	Strap (4-1/8" Long)
5	4D-250	Frame Assembly - 10'
6	2D-453	Frame Angle - L. H.
7	2D-454	Frame Angle - R. H.



Index No.	Part No.	Description
1	4D-336	Frame Angle - R. H.
2	4D-346	Brace - R. H.
	5D-344	R. H. Brace - For 10' Main Frames (not shown)
	5D-339	R. H. Brace - For 12' Main Frames (not shown)
3	4D-347	Brace - L. H.
	5D-345	L. H. Brace - For 10' Main Frames (not shown)
	5D-340	L. H. Brace - For 12' Main Frames (not shown)
4	4D-335	Frame Angle Assembly - L. H.
5	4D-315	Pick-up Frame (STHP & STHHP Models)
6	4D-373	Capscrew (5/8-11 NC x 5-1/2" Long, Grade 5)
7	4D-337	Frame Angle Assembly - L. H. - 10', 16' & 18' Machines
	4D-338	Frame Angle Assembly - R. H. - 10', 16' & 18' Machines (not shown)
8	4D-339	Frame Angle Assembly - L. H.
	4D-340	Frame Angle Assembly - R. H. (not shown)
9	4D-325	Hitch Pin Clamp - L. H. (STHP & STHHP Models)
10	4D-327	Hitch Pin Clamp - R. H. (STHP & STHHP Models)
11	1D-217	Hitch Pin - Category II
	5D-186	Hitch Pin - Category I
12	8C-528	Capscrew (1/2-13 NC x 3" Long, Grade 5)
13	5D-127	Pick-up Frame (STHQ & STHHQ Models)
14	5D-157	Sleeve - 1-15/16" Long (use with quick-attaching coupler)
15	5D-110	Klik Pin - 1/4"
16	5D-155	Clevis Pin (1" Dia. x 4" Long)
17	5D-158	Sleeve - 2-7/8" Long (use with quick-attaching coupler)
18	5D-156	Clevis Pin (1-1/8" Dia. x 5" Long)
19		Capscrew (5/8-11 NC x 4-1/2" Long)
		Lockwasher (5/8" Standard)
20	5C-461	Nut (5/8-11 NC Hex Lock)
		Capscrew (5/8-11 NC x 2" Long)
		Lockwasher (5/8" Standard)
	5C-461	Nut (5/8-11 NC Hex Lock)
21	5D-49	Skid - 6" Wide (used on 8' main frames)
	5D-50	Skid - 8" Wide (used on 10' & 12' main frames)
22		Capscrew (1/2-13 NC x 1-1/2" long)
23		Lockwasher (1/2" Standard)
24		Nut (1/2-13 NC Hex)
25		Capscrew (1/2-13 NC x 2-1/2" Long)
26	5D-75	Bracket
27	5D-56	L. H. Angle
	5D-55	R. H. Angle (not shown)
28	5D-60	Angle
30	2D-338	Strap (4-1/8" Long)
31	5D-61	Arm
33	5D-59	Adjusting Strap
34		Plow Bolt (3/8 x 1-1/2" Long)
		Lockwasher (3/8" Standard)
		Nut (3/8-16 NC Hex)
35		Capscrew (1/2-13 NC x 1-1/2" Long)

10

11

12