

# REPAIR PARTS CATALOG

FOR

*Brillion*

MODEL

HC-84  
HC-84

## HAY CONDITIONER

\* \* \* \* \*

EFFECTIVE JANUARY 1, 1958

ALL PARTS NOT LISTED ARE STANDARD HARDWARE

BRILLION IRON WORKS, INC.  
BRILLION, WISCONSIN

6C-169

7C666 Shell  
30 #apex

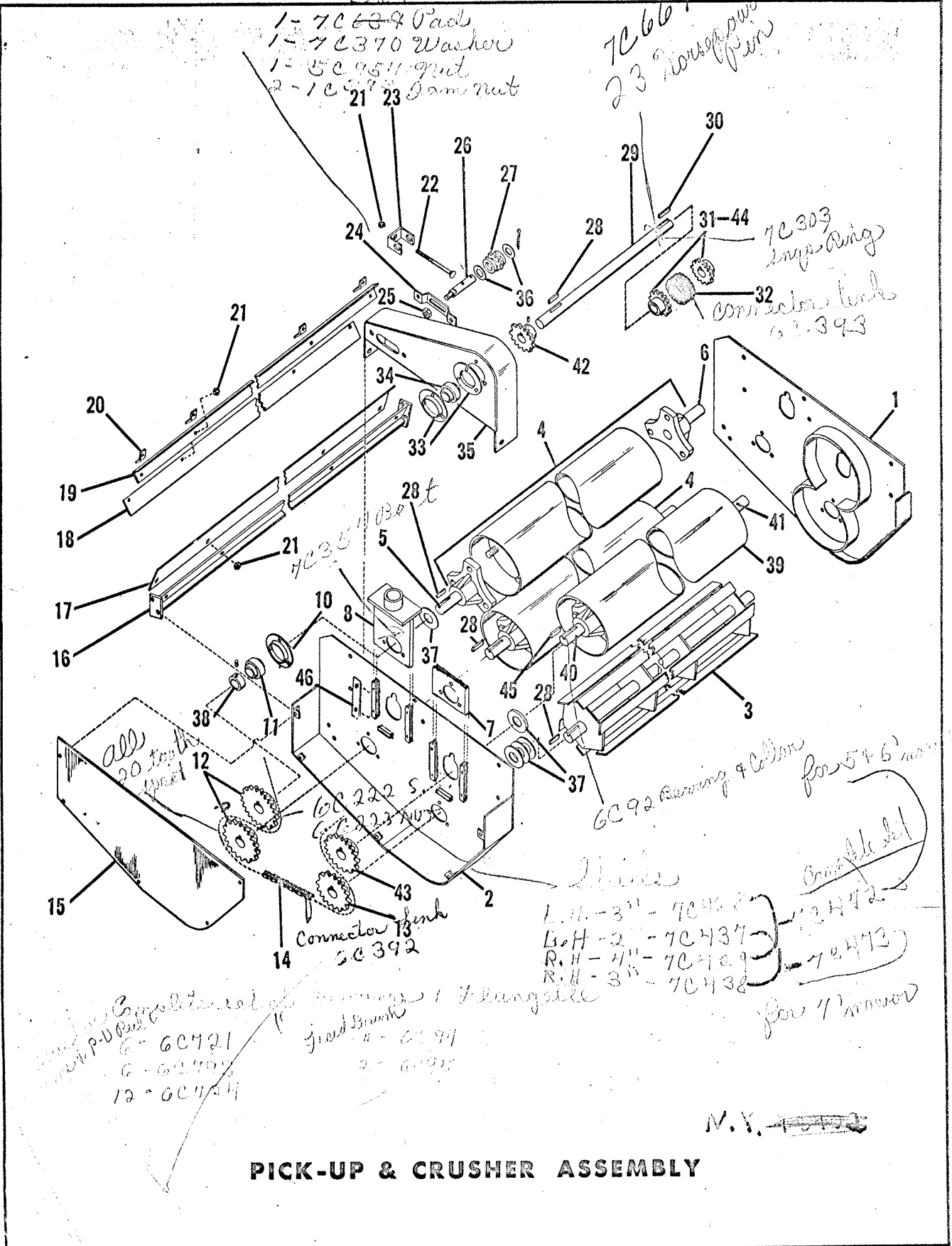
70000

7C664  
23 Rows down  
from

- 369
- 1- 7C639 Pad
- 1- 7C370 Washer
- 1- 5C951 nut
- 2- 1C57 Jam nut

7C303 Imp. Ring  
Connector links  
63393

6C-169



all 20 teeth  
apex

GC 357 1/2

GC 92 Bearing & Collar for 5+6 mm

GC 392  
Connector link

L.H. - 3" - 7C432  
L.H. - 2" - 7C437  
R.H. - 4" - 7C439  
R.H. - 3" - 7C438

Completed  
GC 472  
GC 473  
GC 474

GC 475  
GC 476  
GC 477  
GC 478  
GC 479  
GC 480

GC 481  
GC 482  
GC 483  
GC 484  
GC 485  
GC 486  
GC 487  
GC 488  
GC 489  
GC 490

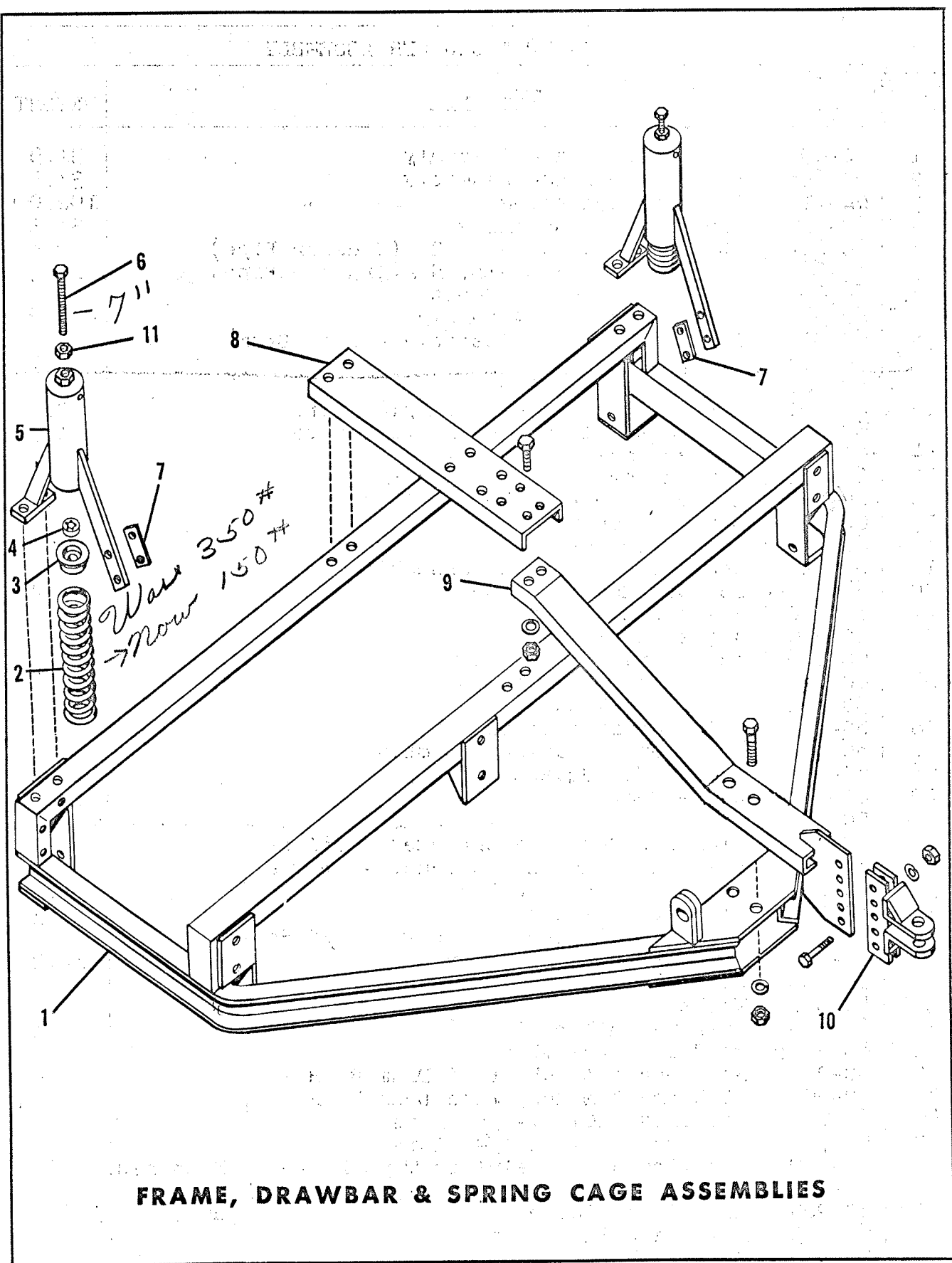
N.Y.

**PICK-UP & CRUSHER ASSEMBLY**

PICK-UP & CRUSHER ASSEMBLY

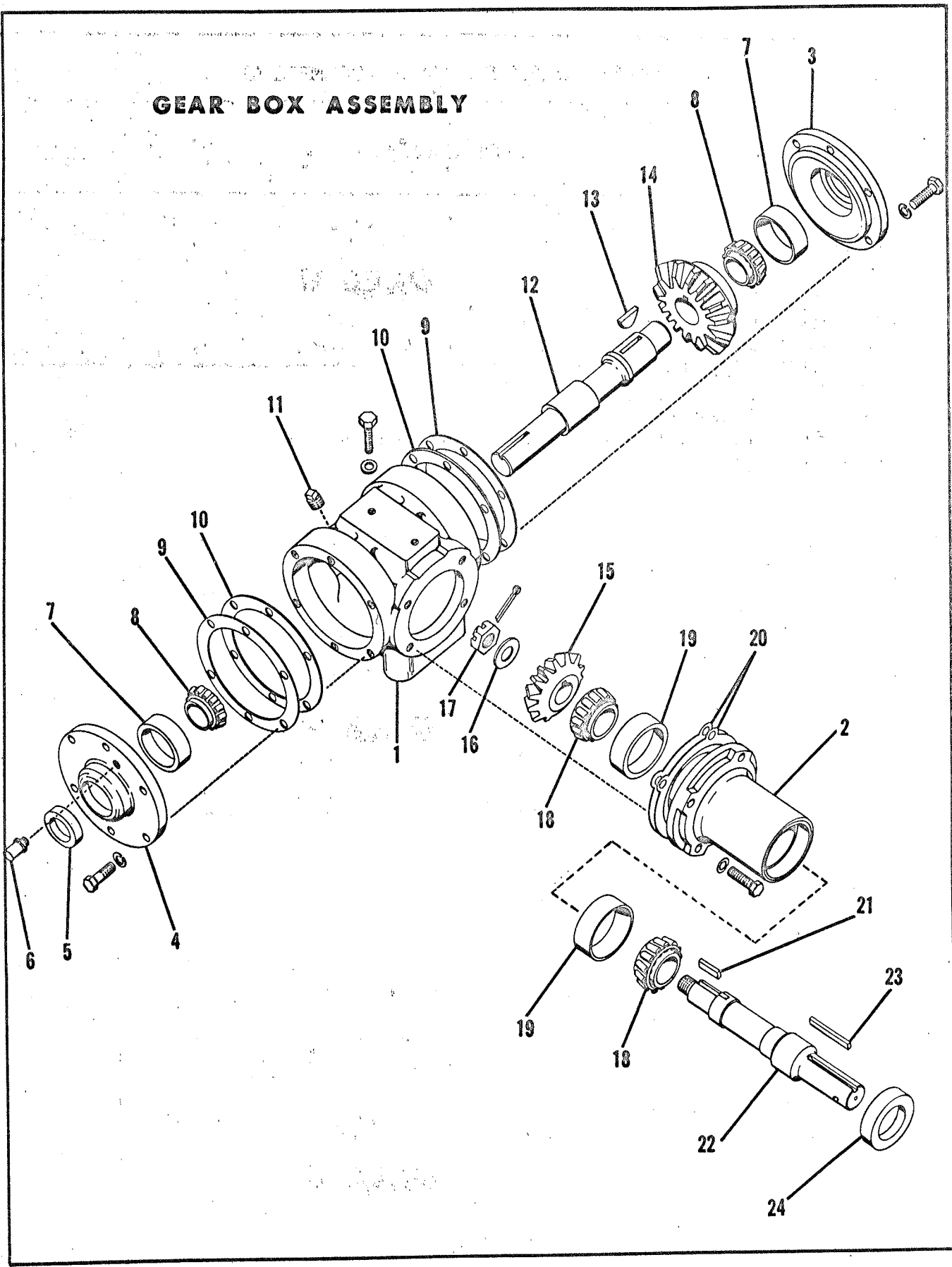
INDEX NO.	PART NO.	PART NAME	WEIGHT
1	6C-695	L. H. Side Plate Assembly	31.5
2	6C-696	R. H. Side Plate Assembly	37.5
3	6C-715	Pick-Up Reel Assembly	102.0
4	<del>6C-712</del> <i>7C387</i>	Crusher Pipe Assembly - $1\frac{7}{16}$ " shaft <i>7C387</i>	131.3
5	6C-689	Stub Shaft & Hub - R. H. (Crusher Pipe)	10.8
6	6C-691	Stub Shaft & Hub - L. H. (Crusher Pipe)	10.3
7	6C-684	Bearing Support - Short	1.1
8	6C-687	Bearing Support Assembly	3.8
*	6C-92	Bearing & Collar Assembly - Feed Drum	1.8
10	6C-724	Flangette 1-7/16,	1.1
11	6C-721	Bearing 1-7/16 Bore <i>1107KRRB</i>	.8
12	6C-701	Sprocket - 20 Teeth 1-7/16 Bore	2.5
13	6C-699	Sprocket - 16 Teeth 1-7/16 Bore	1.7
14	6C-82	Roller Chain <i>105 Links #60</i>	5.8
15	6C-119	Shield Cover	5.3
16	6C-42	Lower Scraper Angle Assembly	16.0
17	6C-97	Lower Scraper	14.0
18	6C-67	Upper Scraper	12.7
19	6C-79	Upper Scraper Angle Assembly	5.0
20	6C-73	Scraper Mounting Strap	.4
21	1C-670	Elastic Stop Nut	
22	6C-226	Adjusting Bolt	.2
23	6C-218	Idler Bracket Assembly	.6
24	6C-83	Idler Support Bracket	.4
25	5C-392	Stover Lock Nut	
26	6C-115	Idler Shaft Assembly	.3
27	6C-58	Sprocket - Bearing Assembly	.5
28	6C-754	Key $3/8$ Square	
29	6C-100	Drive Shaft	12.0
30	5C-491	Key	
31	6C-146	Flexible Coupling Sprocket - Driver	1.7
*	6C-730	Flexible Coupling Sprocket - Driven	1.7
32	6C-145	Roller Chain - Double	1.3
33	6C-94	Flangette 1-1/4	.3
34	6C-95	Bearing & Collar Assembly 1-1/4 Bore	.6
35	6C-86	Support Plate Assembly	12.2
36	2C-458	Washer	
37	4C-551	Washer	
38	6C-793	Bearing Collar 1-7/16	.1
39	<del>6C-297</del> <i>7C388</i>	Feed Drum Assembly - $1\frac{1}{4}$ " shaft <i>7C388</i>	
40	6C-26	Stub Shaft & Hub, Feed Drum R. H.	
41	6C-60	Stub Shaft & Hub, Feed Drum L. H.	
42	6C-77	Sprocket 20T 1-1/4 Bore	
43	6C-76	Sprocket 16T 1-1/4 Bore	
44	7C-109	Coupling Half Chainless Type Driver	} Machines After HC1571
*	7C-110	Coupling Half Chainless Type Driven	
45	4C-905	Key $5/16$ Square	
46	6C-693	Bearing Guide Strap	
*	6C-96	Collar 1-1/4	

6C-169



**FRAME, DRAWBAR & SPRING CAGE ASSEMBLIES**

# GEAR BOX ASSEMBLY



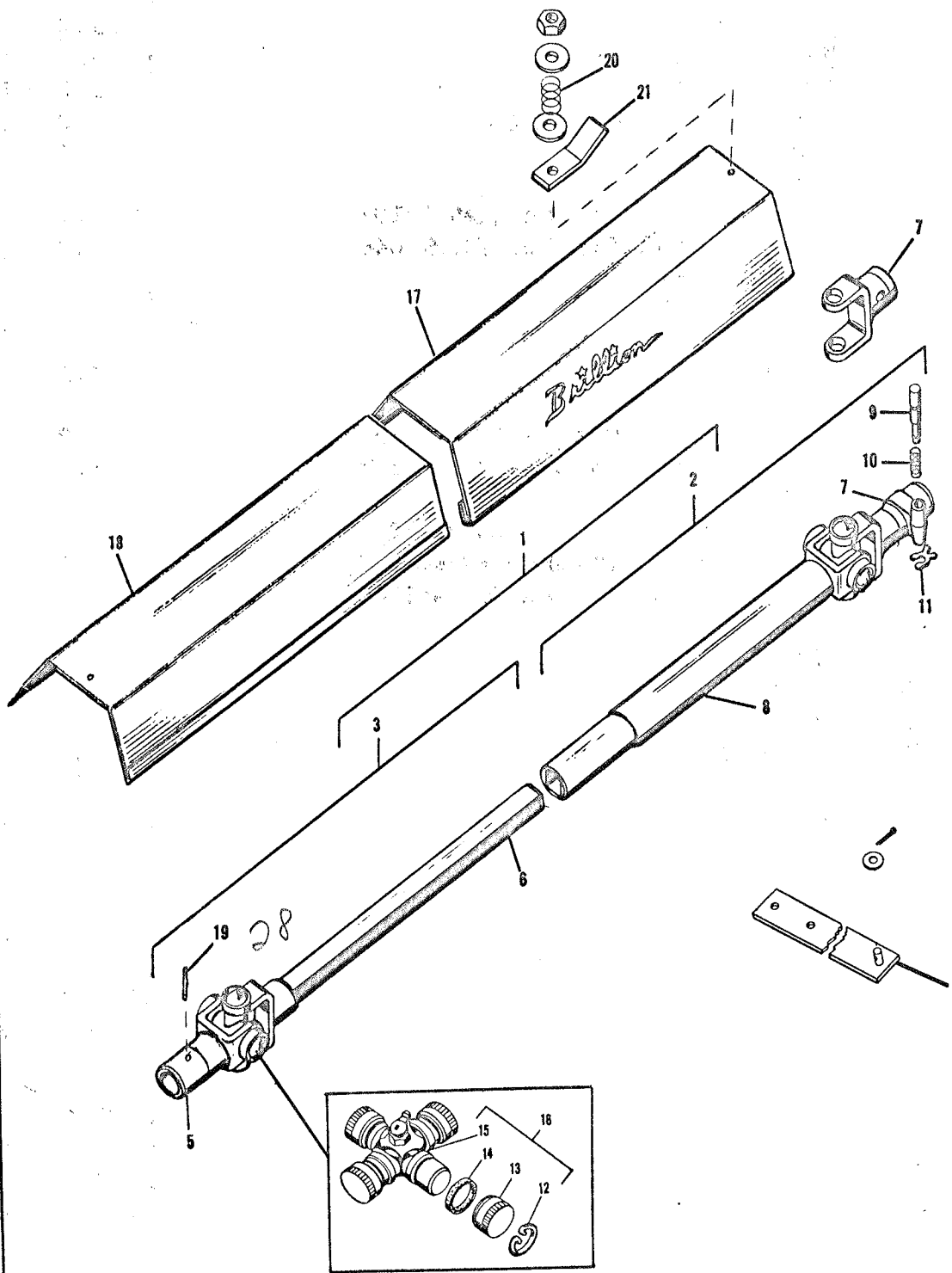
6C-169

FRAME, DRAWBAR & SPRING CAGE ASSEMBLIES

INDEX NO.	PART NO.	PART NAME	WEIGHT
1	6C-56	Frame Assembly	148.0
2	6C-13	Spring - 70612	8.6
3	6C-3	Spring Plug	.8
4	6C-109	Thrust Bearing	.06
5	6C-106	Spring Cage Assembly	12.0
6	6C-99	Adjusting Bolt - was 4 1/2 now 3 7/8	.6
7	6C-107	Mounting Strap	.3
8	6C-34	Tie Channel	15.5
9	6C-706	Drawbar Assembly	28.0
10	4C-757	Adjustable Hitch Plate Assembly	8.0
11	6C-114	Jam Nut	

6C-169

# POWER TAKEOFF SHAFT & SHIELD ASSEMBLIES



6C-169

GEAR BOX ASSEMBLY

INDEX NO.	PART NO.	PART NAME	WEIGHT
1	6C-125	Gear Housing	13.2
2	5C-485	Bearing Carrier	5.8
3	6C-129	Bearing Flange	3.0
4	6C-130	Output Bearing Flange	2.9
5	6C-124	Seal	.1
6	5C-573	Breather Valve	
7	5C-914	Bearing Cup (Timken #LM67010)	.2
8	5C-913	Bearing Cone (Timken #LM67048)	.3
9	6C-127	Shim (.005)	
10	6C-128	Shim (.007)	
11	4C-837	Pipe Plug	.1
12	6C-132	Output Shaft	3.3
13	5C-758	Woodruff Key	
14	6C-123	Output Bevel Gear - 22 Teeth	3.8
15	6C-122	Input Bevel Pinion - 15 Teeth	1.3
16	2C-458	Washer	
17	6C-215	3/4 - 20 N.E.F. Hex Slotted Nut	
18	5C-480	Bearing Cone (Timken #LM48548)	.2
19	5C-479	Bearing Cup (Timken #LM48510)	.1
20	5C-494	Shim (.015)	
	5C-487	Shim (.005)	
	5C-488	Shim (.007)	
21	6C-133	Key	
22	6C-131	Input Shaft	3.1
23	6C-44	Key	
24	6C-126	Seal	

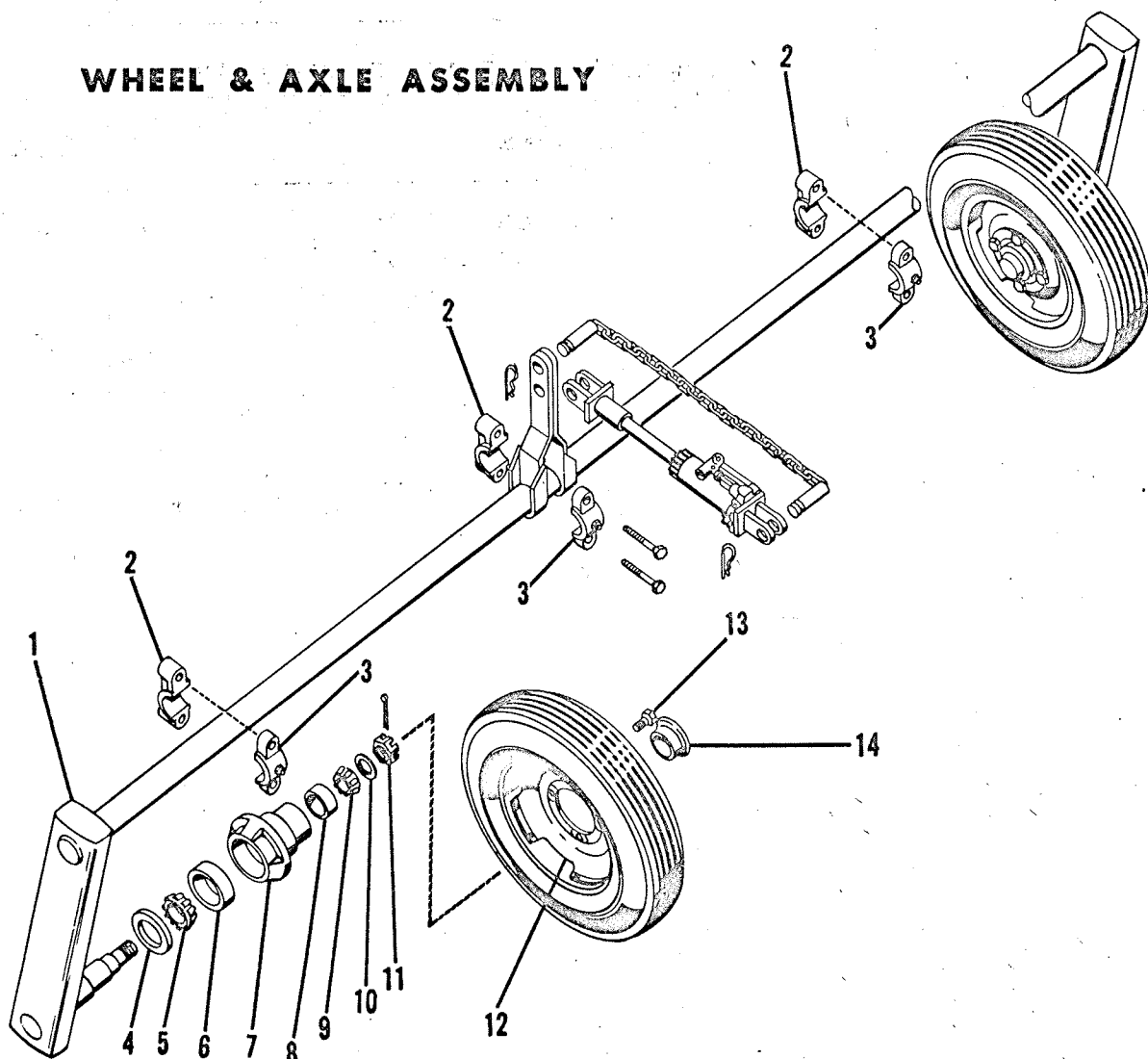
6C-169



6C-169

POWER-TAKE-OFF SHAFT & SHIELD ASSEMBLIES			
INDEX NO.	PART NO.	PART NAME	WEIGHT
1	6C-717	P.T.O. Shaft Complete 1-3/8"	
	6C-722	P.T.O. Shaft Complete 1-1/8"	
2	6C-757	Tube & Joint Assembly 1-3/8"	
	6C-756	Tube & Joint Assembly 1-1/8"	
3	6C-758	Joint & Shaft Assembly	
4	6C-136	Shield Mounting Bracket	1.4
5	7C-266	Gear Box Yoke	
6	7C-261	Square Shaft & Yoke	
7	7C-265	Quick Detachable 1-3/8" Tractor Yoke Only	2.2
	7C-271	1-1/8" Tractor Yoke Only	
8	7C-260	Tube & Yoke Assembly	6.1
9	5C-987	Lock Pin	.1
10	5C-257	Spring	
11	5C-939	"X" Washer	
12	7C-267	Snap Ring	
13	7C-268	Bearing	
14			
15	7C-269	Center Cross	
16	7C-270	Universal Joint Repair Kit	.8
17	6C-286	Front Shield	3.9
18	6C-613	Rear Shield	6.5
19	4C-858	Roll Pin	
20	4C-930	Spring	.1
21	4C-927	Clip	.4

# WHEEL & AXLE ASSEMBLY



6C-169

INDEX NO.	PART NO.	PART NAME	WEIGHT
1	6C-229	Axle Assembly	187.0
2	4C-778	Axle Bearing - Bottom	1.5
3	4C-758	Axle Bearing - Top Assembly	1.5
4	5C-910	Grease Seal	.1
5	5C-913	Bearing Cone (Timken #LM67048)	.3
6	5C-914	Bearing Cup (Timken #LM67010)	.2
7	5C-904	Wheel Hub	6.3
8	5C-912	Bearing Cup (Timken #LM11910)	.1
9	5C-911	Bearing Cone (Timken #LM11949)	.2
10	5C-907	Washer	
11	5C-909	Slotted Nut	.1
12	5C-916	Wheel (Less tire & tube)	15.9
13	5C-100	Wheel Bolt	.1
14	5C-908	Cap	.2