

4C-489

REPAIR PARTS CATALOG

FOR

Brillion

MODELS

HP-2	HPA-2	HP-2S	HPA-2S
HP-3	HPA-3	HP-3S	HPA-3S

PICK-UP ROTARY HOE

* * * * *

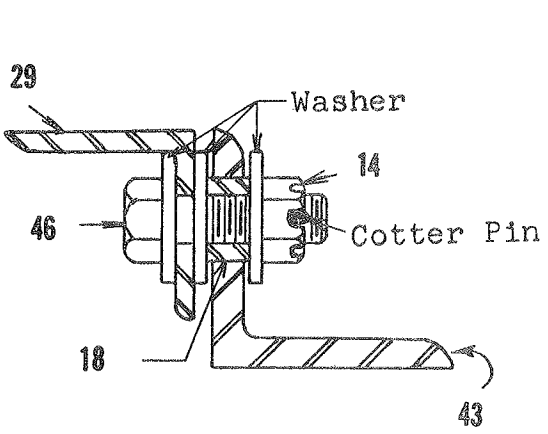
ALL PARTS NOT LISTED ARE STANDARD HARDWARE

BRILLION IRON WORKS, INC.
BRILLION, WISCONSIN

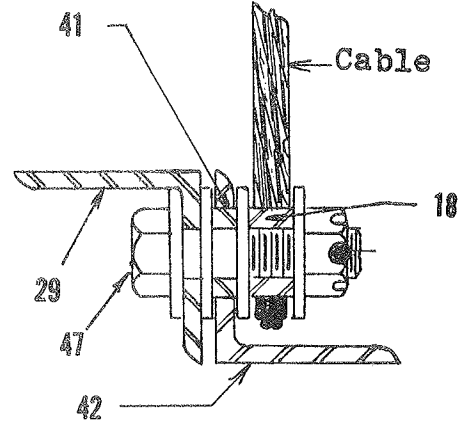
2 & 3 ROW PICK-UP ROTARY HOE

INDEX NO.	PART NO.	PART NAME	WEIGHT
1	5C-89	Snap Coupler	8.0
2	5C-85	"A" Frame Assembly	21.0
3	5C-90	Spacer	
4	5C-84	Lift Link Assembly	6.0
5	4C-486	Hitch Rod	5.0
6	4C-487	Cable Clamp	
7	5C-980	Cable	1.4
8	5C-91	Lift Link Pin	
9	5C-960	Front Lift Assembly	58.3
10	5C-975	Pivot Link Assembly	2.3
11	5C-964	Rear Angle Assembly	26.5
12	4C-476	"A" Frame Assembly	14.5
13	5C-971	Cable	2.8
14	2C-290	Slotted Nut	
15	5C-968	Drawbar Pivot Bushing	
16	5C-974	Front Pivot Bolt	
17	5C-969	Rear Pivot Bushing	
18	4C-434	Pivot Bushing	
19	5C-973	Rear Pivot Bolt	
20	5C-967	Pivot Link Bushing	
21	5C-972	Pivot Link Bolt	
22	5C-982	Pivot Bolt	.1
23	2C-675	Bolt (Bearing)	.1
24	4C-395	Hoe Shaft Assembly W/Wheels & Bearings	105.0
25	4C-398	Spacer	.3
26	4C-399	Outer Hoe Wheel	12.5
27	4C-400	Standard Hoe Wheel	12.5
28	4C-402	Wheel Shaft	9.0
29	4C-403	Frame Assembly	63.8
30	4C-407	Adj. Bearing Arm - Offset	3.0
31	4C-408	Adj. Bearing Arm - Straight	2.5
32	4C-438	Hoe Tooth	.4
33	5C-81	Spoonbill Hoe Tooth	.4
34	4C-733	Thrust Bearing Sleeve	.8
35	4C-734	Sliding Bearing Sleeve	.8
36	4C-735	Bearing Thrust Washer	.2
37	5C-99	Bearing Carrier	2.0
38	5C-101	Spoonbill Hoe Wheel	13.5
39	5C-102	Outer Spoonbill Hoe Wheel	13.5
40	5C-107	Spoonbill Shaft Assy. W/Wheels & Brgs.	115.0
41	4C-435	Frame Pivot Bushing	.1
42	4C-419	Drawbar Angle	10.6
43	4C-477	Front Drawbar Angle	18.3
44	4C-485	Cable	2.3
45	5C-88	Cable	1.4
46	4C-481	Bolt	.1
47	4C-480	Bolt	.1

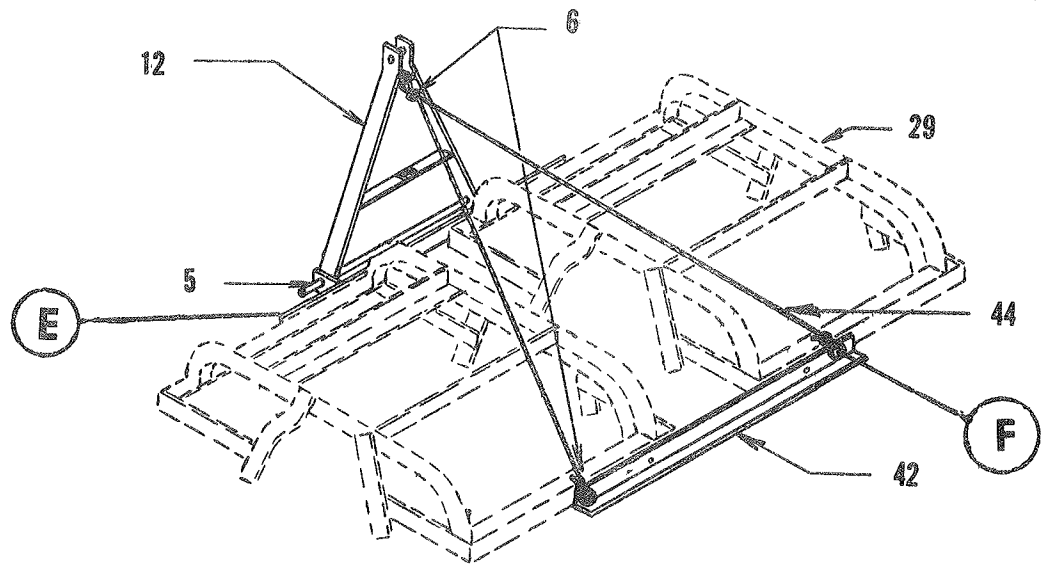
4C-489



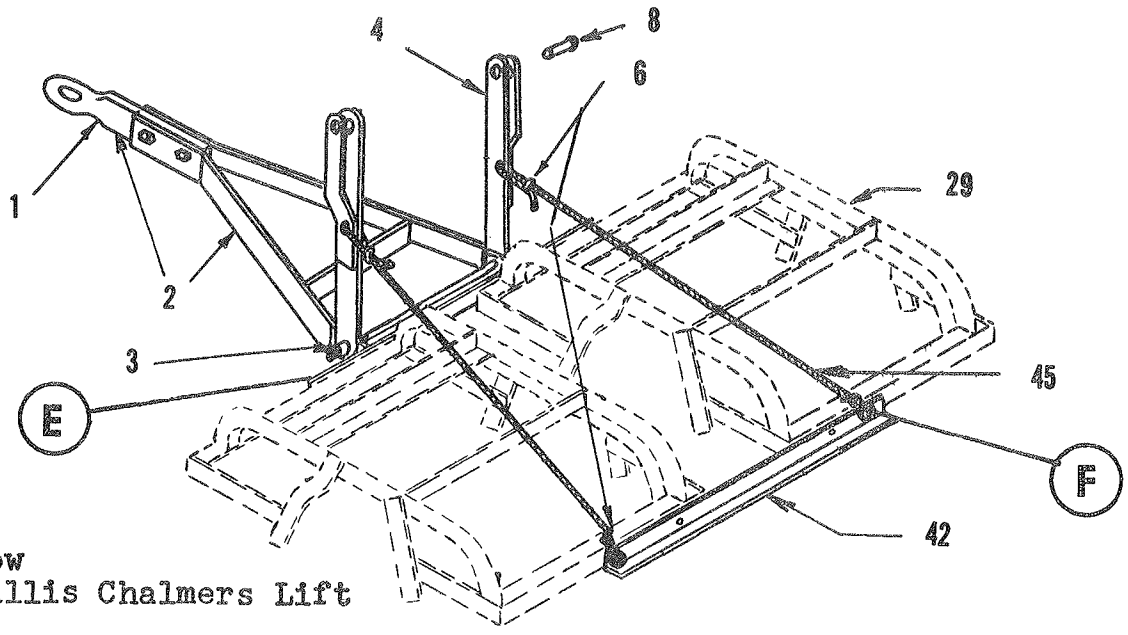
Assembly Detail
Front E



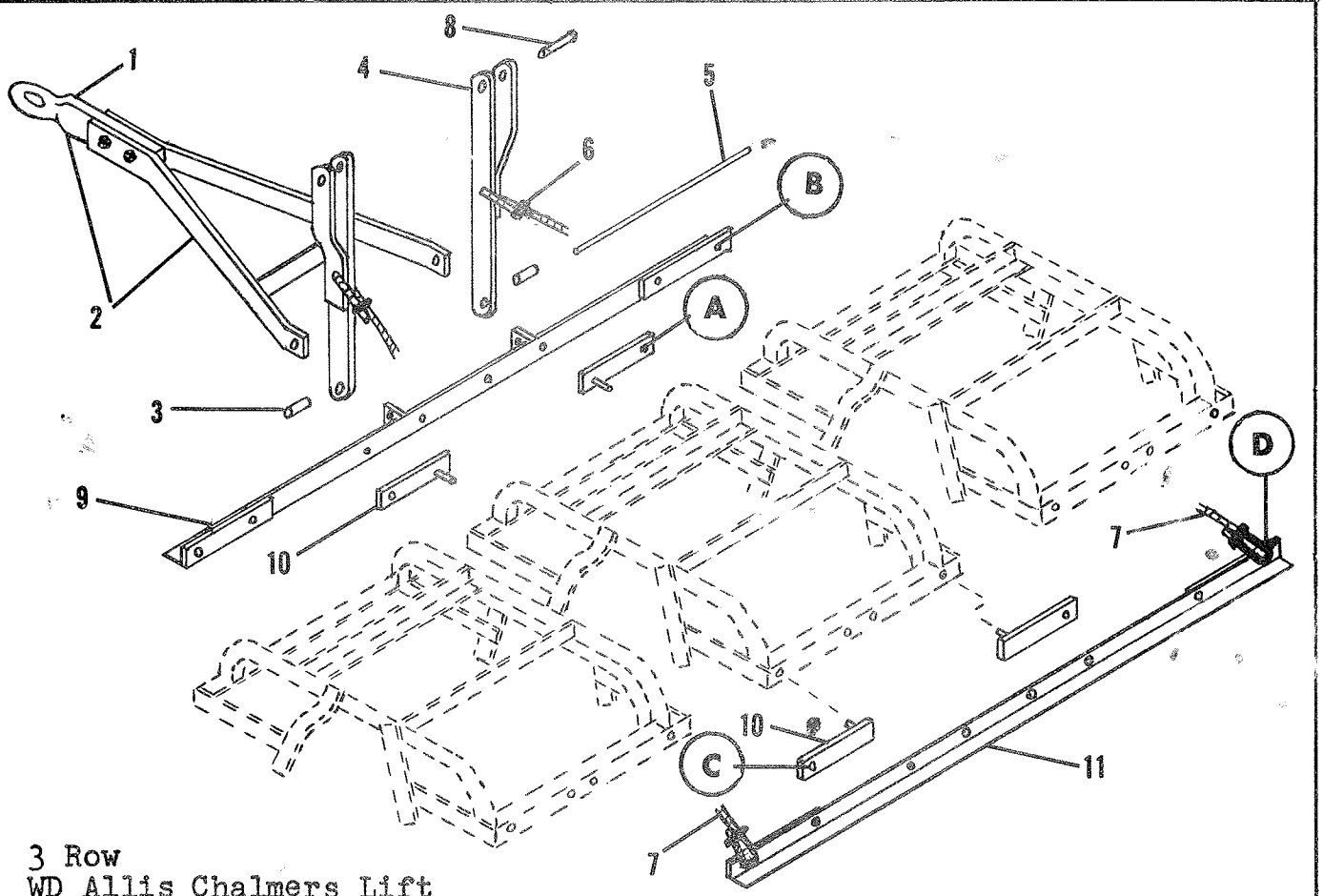
Assembly Detail
Rear F



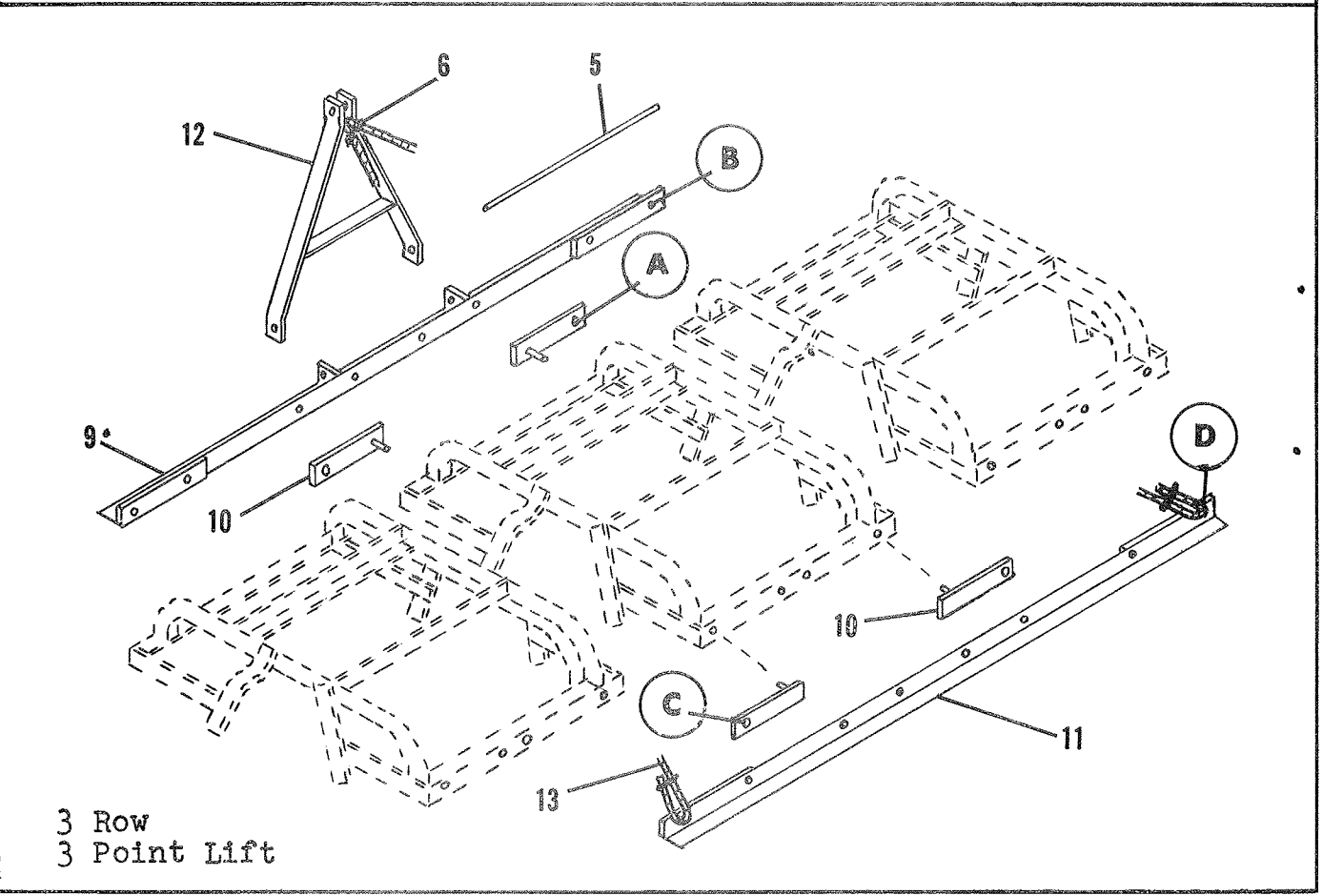
2 Row
3 Point Lift



2 Row
WD Allis Chalmers Lift



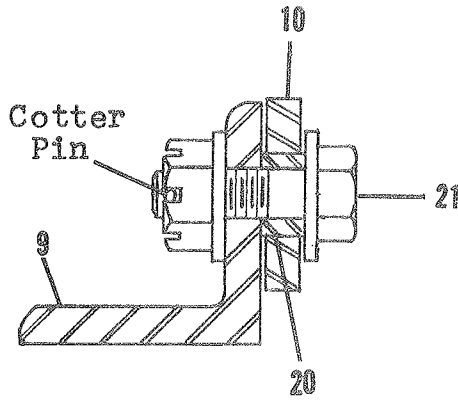
3 Row
WD Allis Chalmers Lift



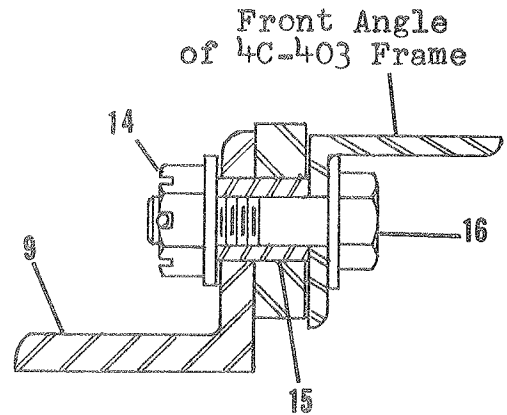
3 Row
3 Point Lift

4C-489

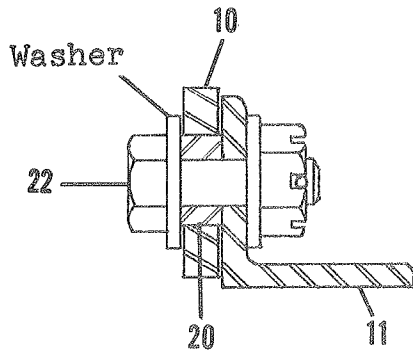
3 ROW HOE ANGLE ASSEMBLY



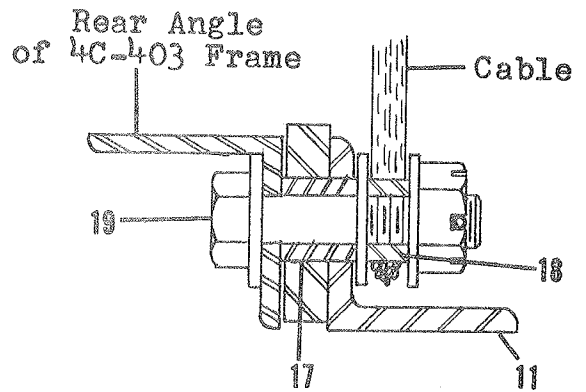
Assembly At A



Assembly At B

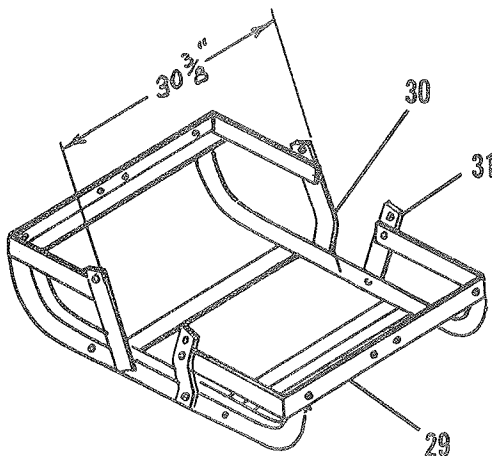


Assembly At C



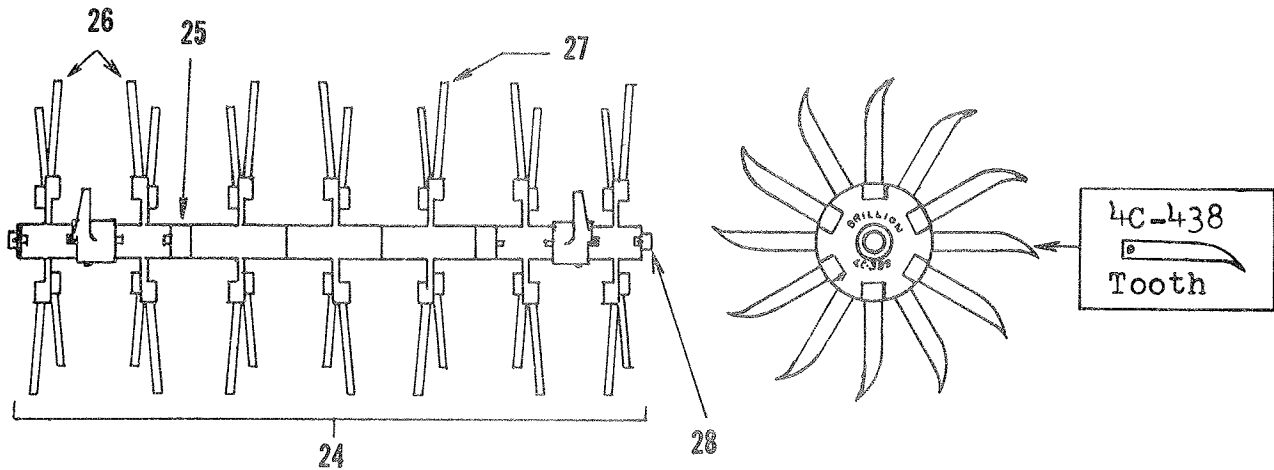
Assembly At D

FRAME SIDE ARM SPACING

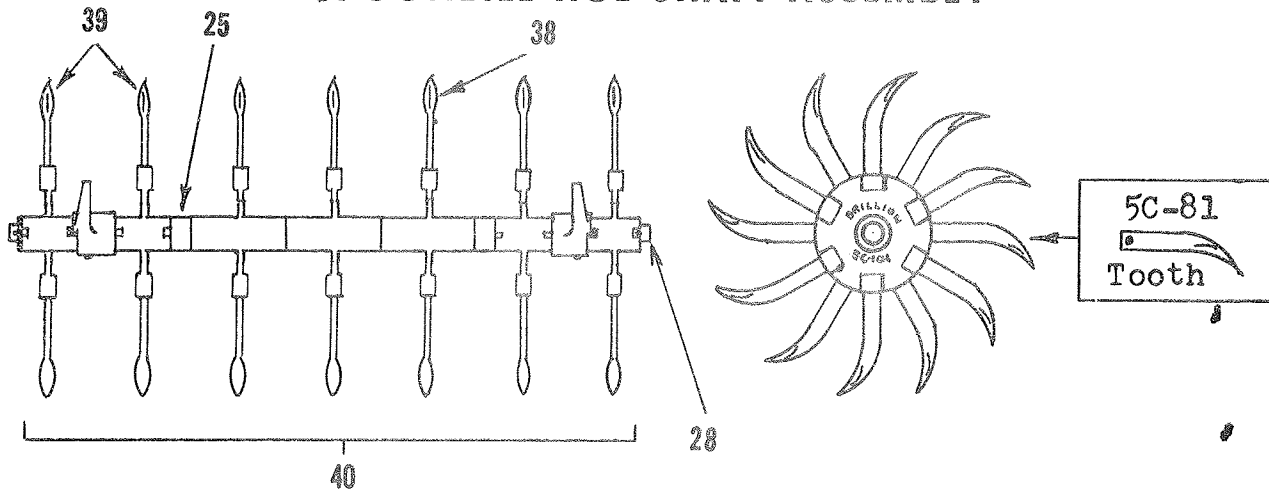


NOTE: Prior to assembly of the axles to the frames check the over-all distance of the side arms. This distance, 30 3/8" should be measured from outside to outside of the arms, to which the wheel shafts are attached. If this dimension is greater or less than 30 3/8", it should be corrected for proper alignment of the bearings.

WORK-ALL HOE SHAFT ASSEMBLY



SPOONBILL HOE SHAFT ASSEMBLY



HOE BEARING & SLEEVE ASSEMBLIES

