

REPAIR PARTS CATALOG

Brillion

FORAGE MASTER

SILO UNLOADER

1959 MODEL "A"

BEGINNING WITH SERIAL NUMBER 1177

ALL PARTS NOT LISTED ARE STANDARD HARDWARE

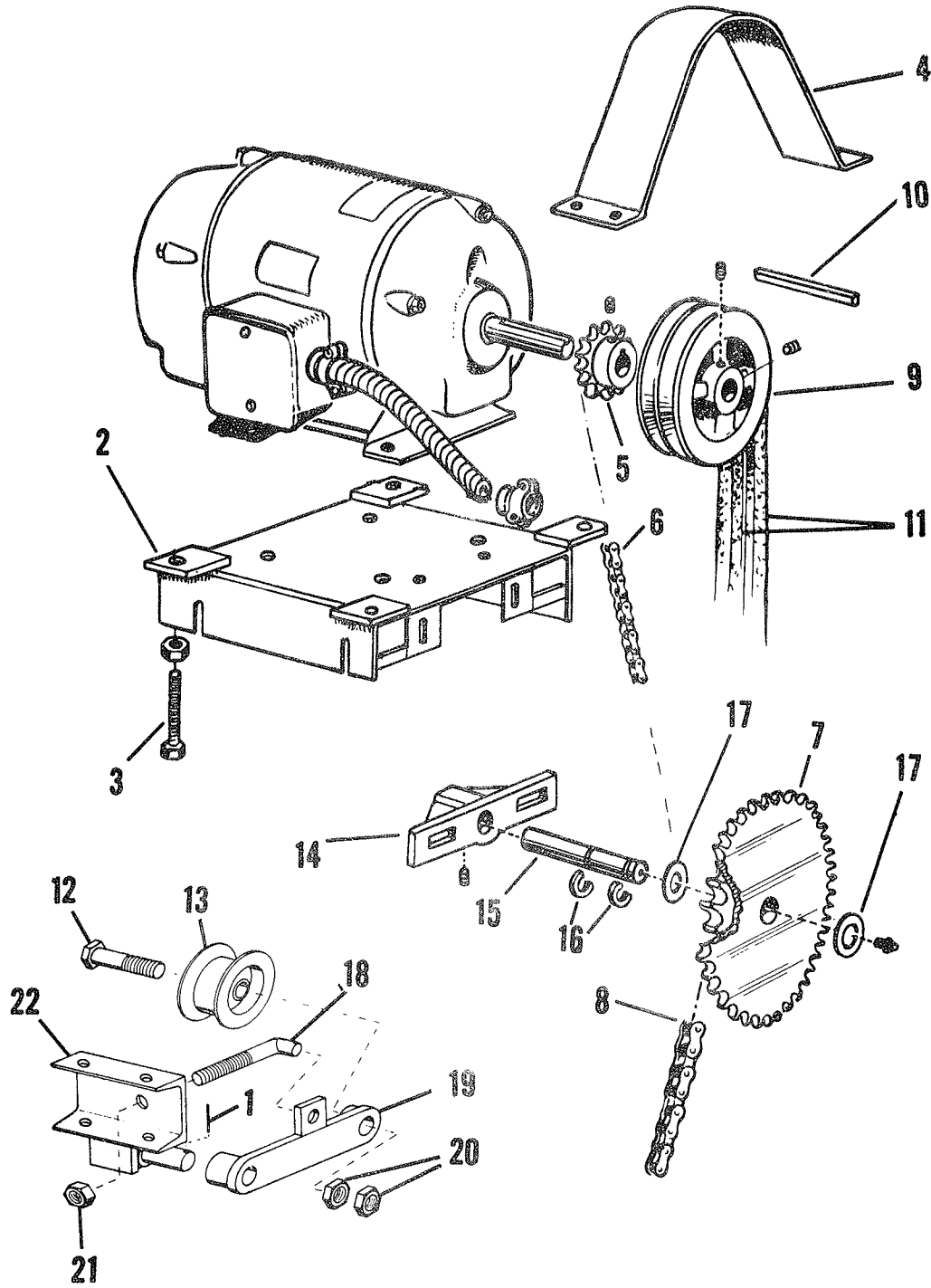
BRILLION IRON WORKS, INC.

Brillion, Wisconsin, U. S. A.

8C-93

MOTOR AND DRIVE ASSEMBLY

Index No.	Part No.	Part Name	Weight
1	1C-99	Roll Pin	
2	8C-98	Motor Mount Assembly	13.5
3	6C-934	Bolt	0.2
4	8C-31	Belt Guard	3.0
5	6C-931	Drive Sprocket	0.3
6	7C-79	Roller Chain	1.0
7	7C-77	Double Sprocket Assembly	5.3
*	7C-147	Bushing - Bronze (Used in 7C-77)	0.1
8	8C-48	Roller Chain	2.0
9	6C-921	Sheave - 2 Groove	5.8
10	2C-455	Key	
11	6C-920	V-Belt Matched Set	1.0
12	8C-65	Cap Screw	
13	8C-60	Idler Pulley	1.0
14	7C-73	Idler Bracket	2.0
15	7C-74	Idler Shaft	1.0
16	7C-75	Snap Ring 1"	
17	7C-76	Machinery Bushing	
18	8C-66	Tightener Rod	0.3
19	8C-54	Belt Idler Bracket	1.6
20	1C-70	Jam Nut	
21	5C-392	Stover Nut	
22	8C-61	Mounting Bracket	3.2

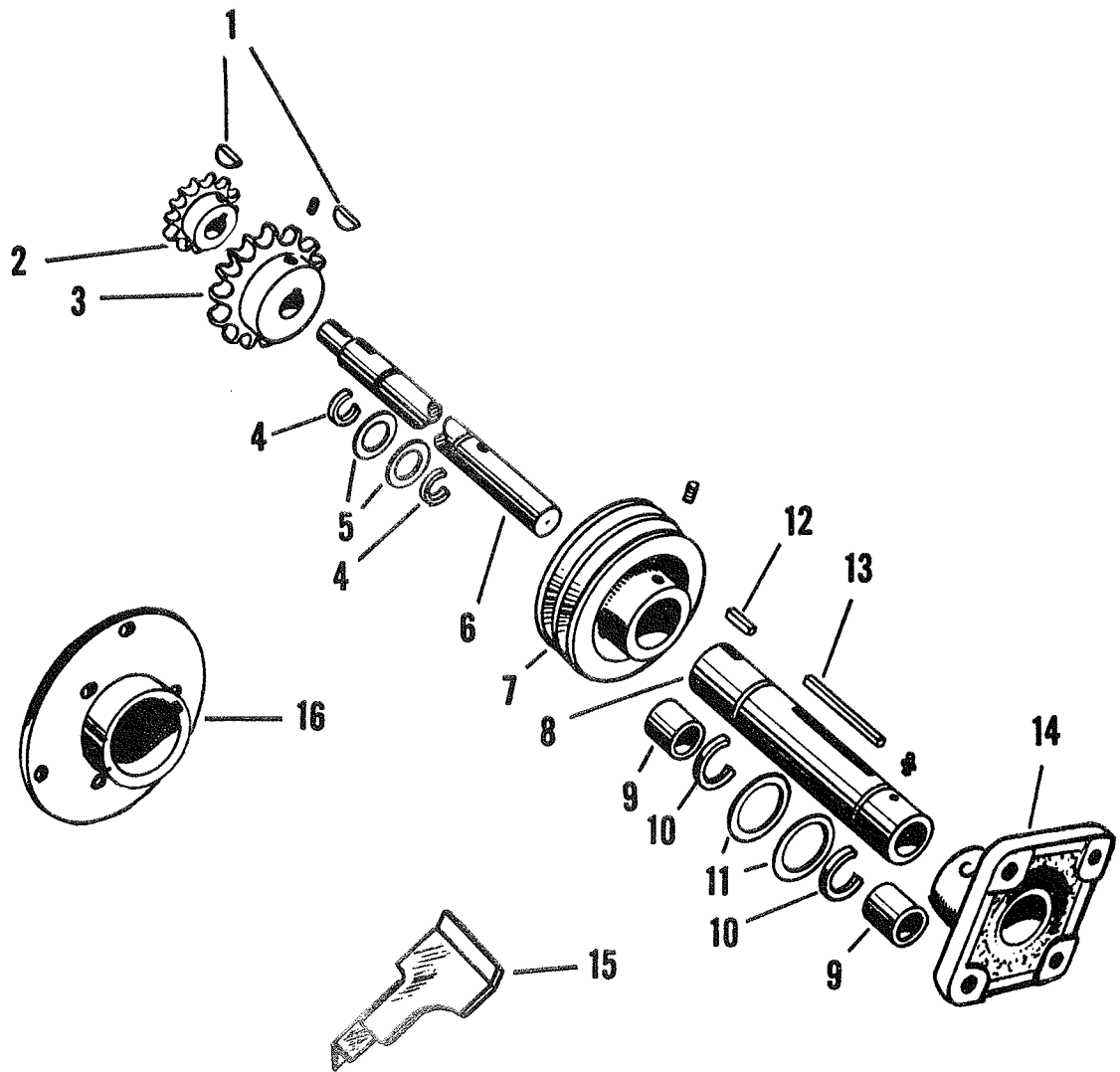


MOTOR AND DRIVE ASSEMBLY

FAN AND AUGER DRIVE ASSEMBLY

Index No.	Part No.	Part Name	Weight
1	7C-83	Woodruff Key	
2	7C-461	Sprocket - 14 T. 1/2 P.	0.5
3	7C-84	Sprocket - 21 T. 3/4 P.	2.5
4	7C-85	Snap Ring 1-3/8"	
5	7C-86	Machinery Bushing	
6	7C-87	Shaft - Conveyor Drive	7.8
7	6C-743	Sheave - 2 Groove	7.8
8	7C-88	Rotor Tube	5.5
*	7C-740	Rotor Tube Assembly - Made up of: 1 - 7C-88 Rotor Tube 2 - 7C-90 Bronze Bushings	5.6
9	7C-90	Bronze Bushing	
10	7C-91	Snap Ring 2-1/4"	
11	7C-92	Machinery Bushing	
12	7C-89	Key	
13	2C-455	Key	
14	7C-93	Bearing Cartridge	12.0
15	7C-457	Fan Blade	2.0
16	7C-94	Rotor Assembly	10.0

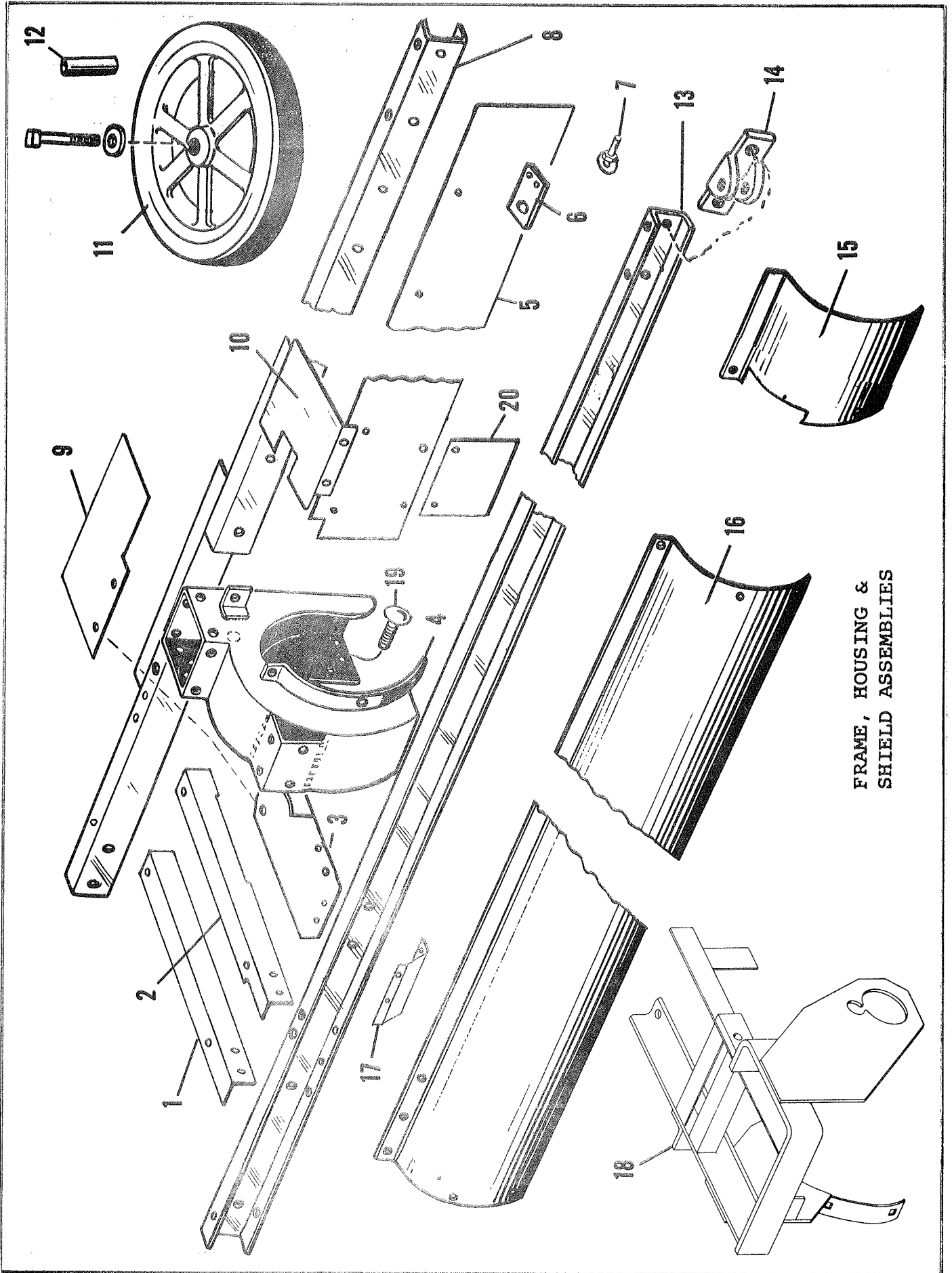
8C-93



FAN AND AUGER DRIVE ASSEMBLY

FRAME, HOUSING, AND SHIELD ASSEMBLIES

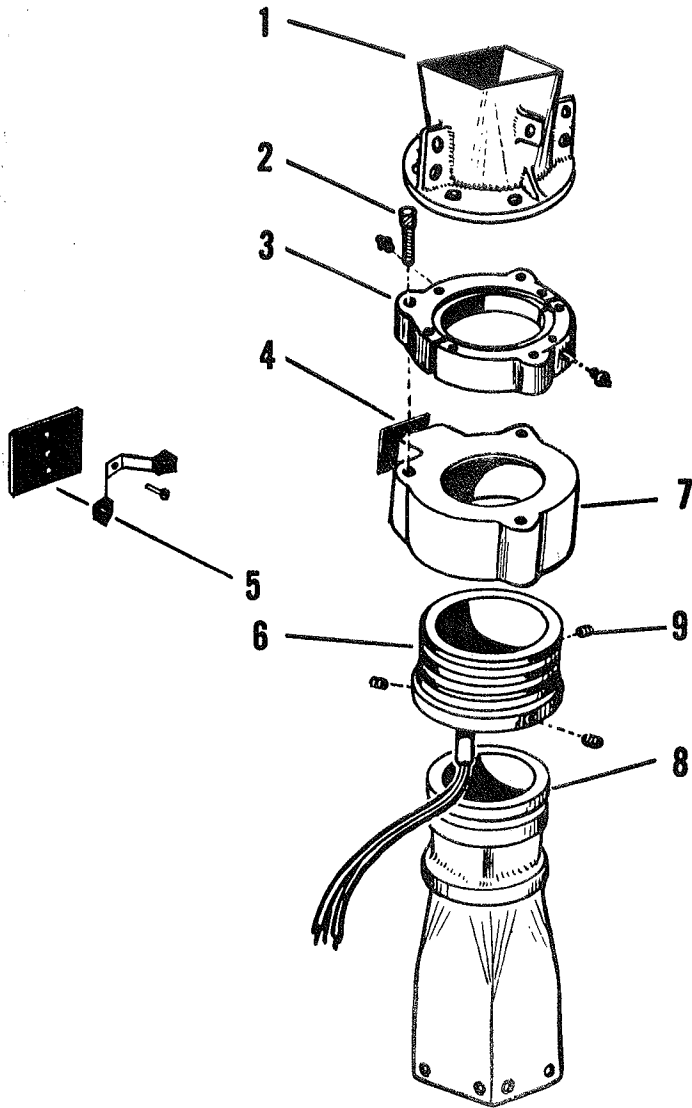
Index No.	Part No.	Part Name	Weight
1	8C-13	Mounting Angle - Inner	3.0
2	8C-12	Mounting Angle - Outer	3.0
3	6C-849	Pulley Shield Assembly	4.8
4	7C-97	Rotor Housing	22.5
5	6C-858	Conveyor Shield - Front - 12'	7.2
	6C-859	Conveyor Shield - Front - 14'	8.6
	6C-860	Conveyor Shield - Front - 16'	10.1
	6C-861	Conveyor Shield - Front - 18'	11.5
	6C-862	Conveyor Shield - Front - 20'	13.0
6	6C-892	Slide	0.8
7	7C-967	Adjustment Screw	0.2
8	6C-813	Front Channel - 12'	37.4
	6C-814	Front Channel - 14'	41.5
	6C-815	Front Channel - 16'	45.6
	6C-816	Front Channel - 18'	49.7
	6C-817	Front Channel - 20'	53.8
9	7C-417	Deflector	2.4
10	7C-100	Deflector	1.8
11	7C-98	Wall Wheel Assembly	18.0
12	7C-99	Bushing	0.2
13	6C-794	Rear Channel - 12'	32.1
	6C-795	Rear Channel - 14'	36.2
	6C-796	Rear Channel - 16'	40.3
	6C-797	Rear Channel - 18'	44.4
	6C-798	Rear Channel - 20'	48.5
14	6C-741	Tie Rod End	2.4
15	7C-523	Shield Extension	2.4
16	6C-842	Conveyor Shield - 12'	22.0
	6C-843	Conveyor Shield - 14'	26.6
	6C-844	Conveyor Shield - 16'	31.2
	6C-845	Conveyor Shield - 18'	35.8
	6C-846	Conveyor Shield - 20'	40.4
17	8C-52	Brace	2.3
18	7C-991	Outboard Bearing Bracket Assembly	19.0
19	7C-415	Bolt	0.1
20	8C-85	Shield	0.4



FRAME, HOUSING &
SHIELD ASSEMBLIES

TRANSITION ASSEMBLY

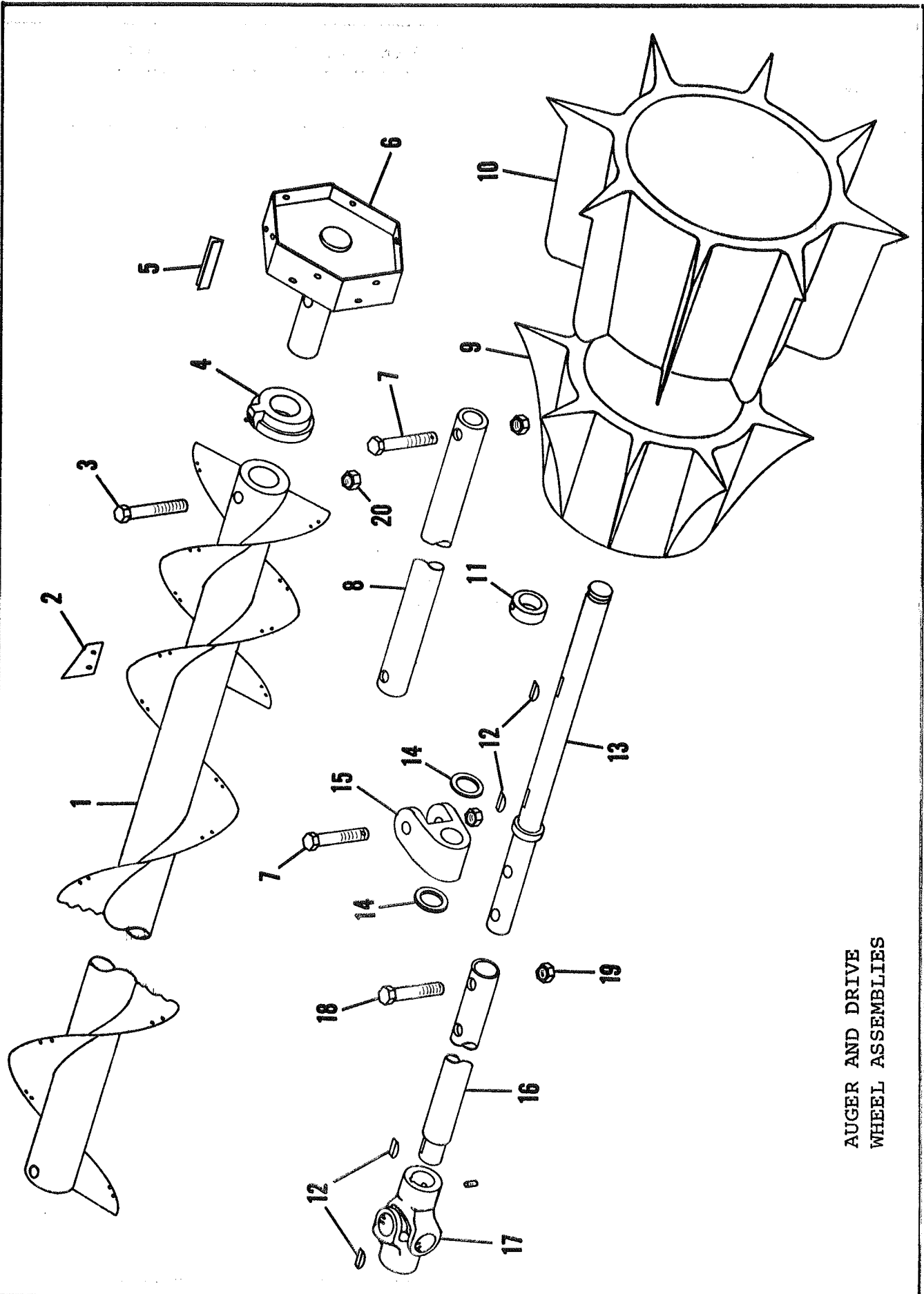
Index No.	Part No.	Part Name	Weight
1	7C-101	Upper Transition	12.8
2	7C-107	Cap Screw	
3	6C-755	Support Ring	10.3
4	7C-106	Cover Plate	0.2
5	7C-105	Double Brush Assembly	0.3
*	7C-589	Terminal Board	0.2
6	7C-104	Collector Ring Unit	6.9
7	7C-103	Collector Housing	5.0
8	7C-102	Lower Transition	33.3
9	7C-108	Cap Screw	
*	7C-673	Terminal Board Assembly Includes: 1 - 7C-589 Terminal Board 3 - 7C-105 Double Brush Assembly	0.7



TRANSITION ASSEMBLY

AUGER AND DRIVE WHEEL ASSEMBLIES

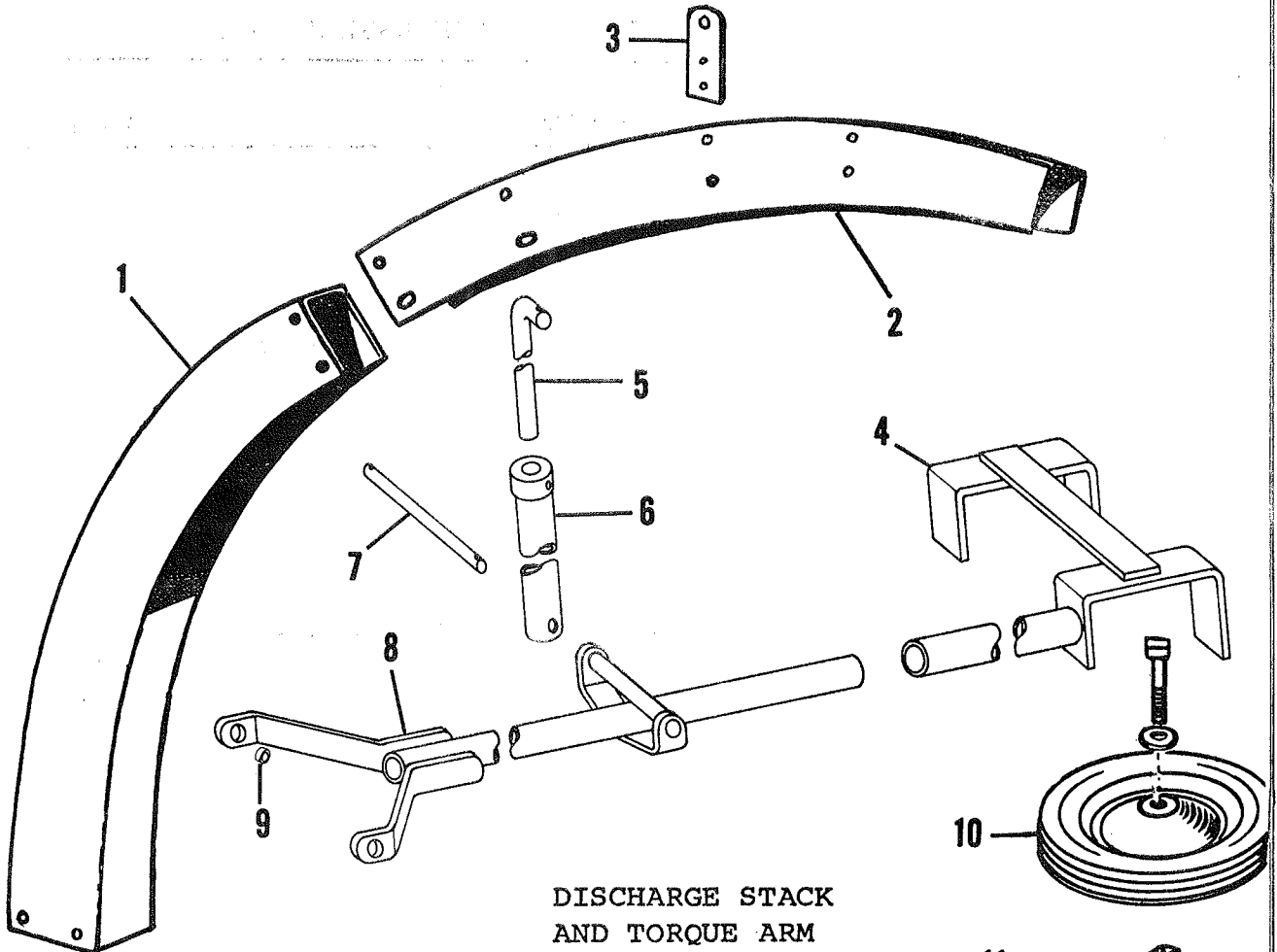
Index No.	Part No.	Part Name	Weight
1	8C-103	Conveyor Assembly - 12'	40.5
	8C-104	Conveyor Assembly - 14'	47.5
	8C-105	Conveyor Assembly - 16'	54.5
	8C-106	Conveyor Assembly - 18'	61.5
	8C-107	Conveyor Assembly - 20'	68.5
2	6C-746	Knife	0.1
*	7C-803	Cap Screw (Used to Attach Knives)	
3	7C-783	Cap Screw (Both ends)	
4	7C-211	Conveyor Bearing Assembly	1.4
5	7C-467	Frost Wheel Knife	2.4
6	8C-108	Frost Chipper Hub	8.5
7	6C-752	Bolt - Drilled	
8	7C-992	Tie Rod - 12'	9.9
	7C-993	Tie Rod - 14'	11.7
	7C-994	Tie Rod - 16'	13.5
	7C-995	Tie Rod - 18'	15.5
	7C-996	Tie Rod - 20'	17.3
9	6C-738	Drive Hub	56.0
10	8C-34	Drive Hub	84.0
11	7C-145	Set Collar	0.1
12	7C-83	Key-Woodruff	
13	7C-966	Drive Wheel Shaft Assembly	5.2
14	7C-76	Machinery Bushing	
15	8C-110	Bearing - Drive Shaft	1.8
16	7C-959	Drive Shaft Assembly - 12'	4.6
	7C-960	Drive Shaft Assembly - 14'	6.3
	7C-961	Drive Shaft Assembly - 16'	8.0
	7C-962	Drive Shaft Assembly - 18'	9.7
	7C-963	Drive Shaft Assembly - 20'	11.4
17	7C-112	Universal Joint Assembly	1.8
18	8C-36	Cap Screw - Heat Treated	
19	5C-954	Lock Nut	
20	7C-470	Jam Nut	



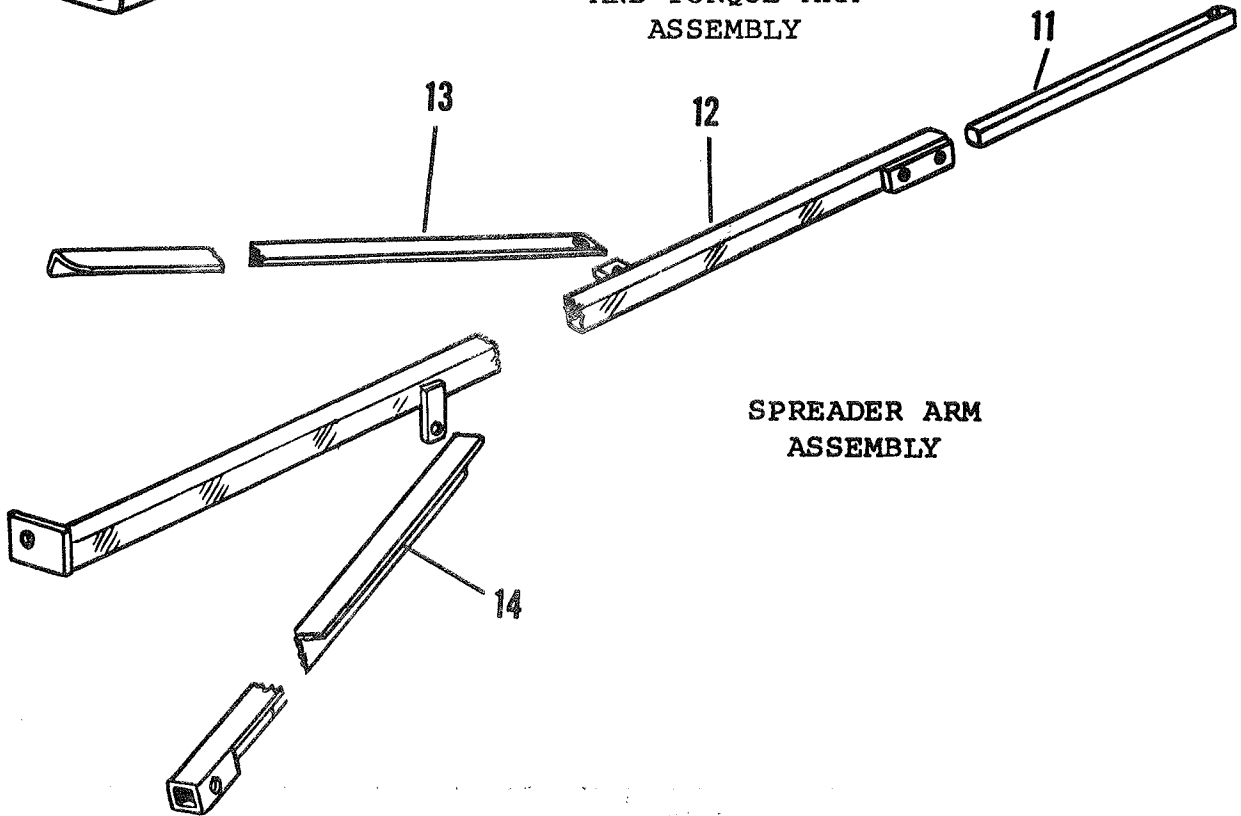
AUGER AND DRIVE
WHEEL ASSEMBLIES

DISCHARGE STACK, TORQUE ARM AND SPREADER ARM

Index No.	Part No.	Part Name	Weight
1	6C-929	Discharge Tube	17.5
2	7C-517	Discharge Spout - 12'	13.0
*	7C-118	Discharge Spout - 14' - 16' - 18' - 20'	21.3
3	8C-28	Strap	0.7
4	7C-972	Door Bracket	9.0
5	8C-1	Support Rod	1.7
6	7C-998	Tubular Support	2.1
7	8C-22	Pin	0.5
8	7C-981	Torque Arm - 12'	15.7
	7C-982	Torque Arm - 14'	18.0
	7C-983	Torque Arm - 16'	20.3
	7C-984	Torque Arm - 18'	22.5
	7C-985	Torque Arm - 20'	24.8
9	4C-434	Bushing	
10	7C-67	Wheel Assembly	4.8
11	7C-55	Spreader Arm Extension	4.5
12	7C-57	Spreader Arm Assembly - 12'	10.3
	7C-58	Spreader Arm Assembly - 14'	12.5
	7C-59	Spreader Arm Assembly - 16'	14.7
	7C-60	Spreader Arm Assembly - 18'	16.9
	7C-61	Spreader Arm Assembly - 20'	19.1
13	7C-56	Brace Angle	6.5
14	7C-54	Support Brace Assembly	3.6



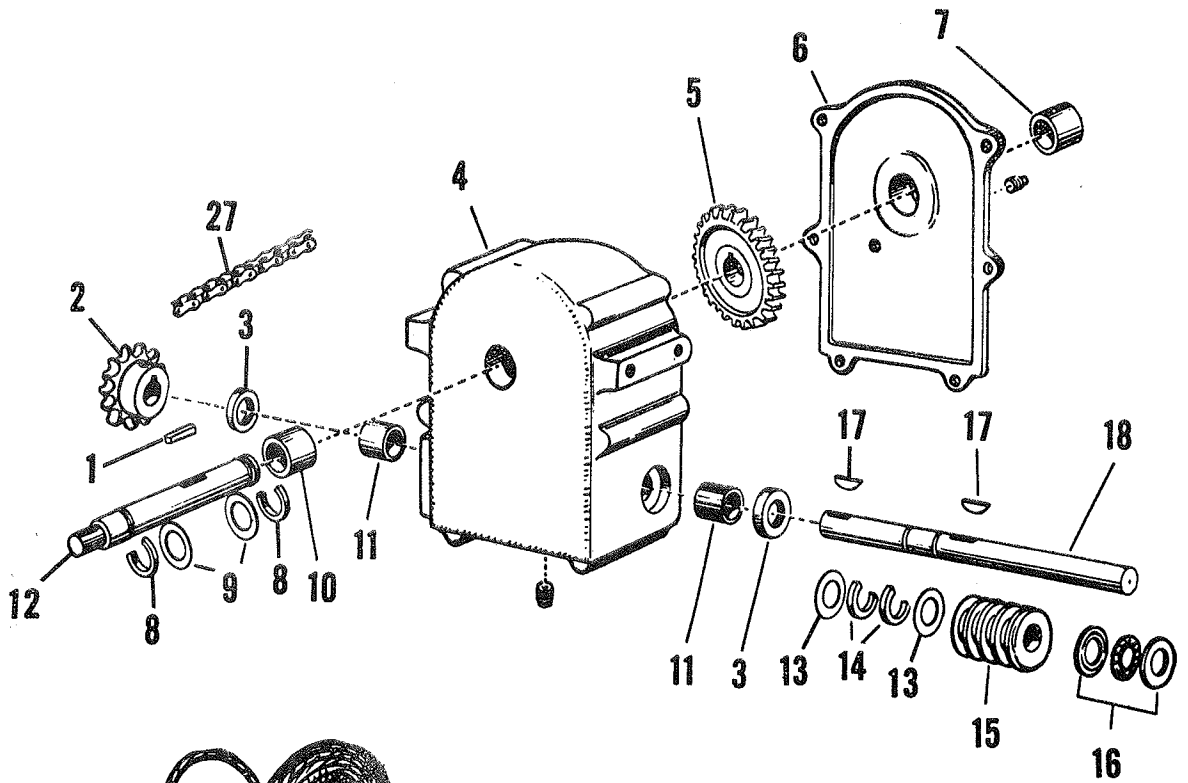
DISCHARGE STACK
AND TORQUE ARM
ASSEMBLY



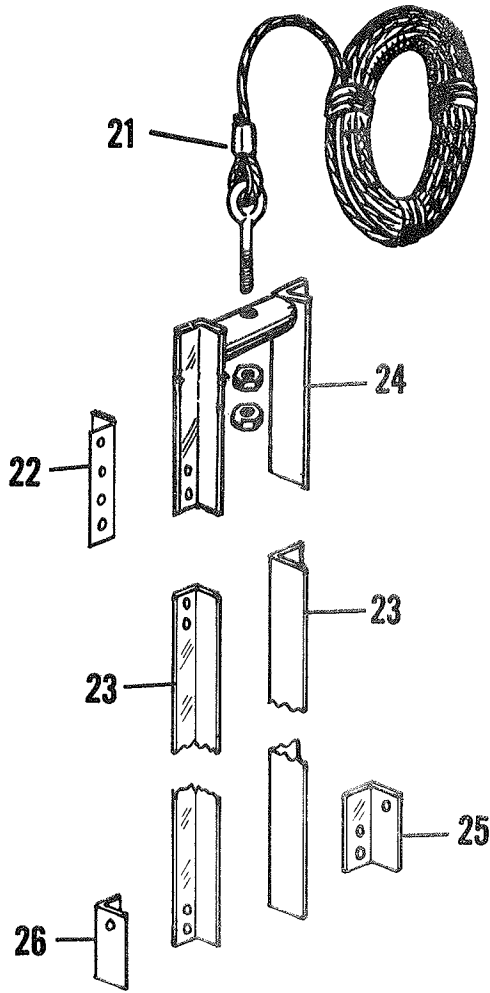
SPREADER ARM
ASSEMBLY

GEARBOX, HANGER AND BALANCE ASSEMBLIES

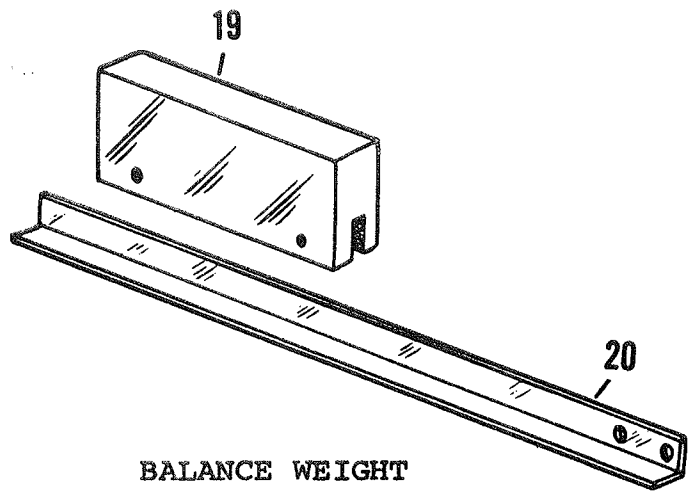
Index No.	Part No.	Part Name	Weight
1	6C-754	Key	
2	7C-461	Sprocket - 14 T. - 1/2 P.	0.5
3	7C-124	Oil Seal	0.1
4	6C-942	Gear Housing Assembly (Includes Bushings)	20.5
5	6C-744	Worm Gear	4.5
6	8C-102	Cover Plate Assembly (Includes Bushing)	4.5
7	7C-126	Bronze Bushing - Cover	
8	7C-121	Snap Ring 1-1/4"	
9	7C-122	Machinery Bushing	
10	7C-149	Bronze Bushing - Gear Box	
11	7C-125	Bronze Bushing	
12	7C-951	Worm Gear Shaft	2.8
13	7C-120	Machinery Bushing	
14	7C-75	Snap Ring 1"	
*	8C-174	Split Collar Assembly (Snap Ring Retainer)	
15	6C-745	Worm	1.5
16	7C-123	Thrust Bearing	0.3
17	7C-83	Key - Woodruff	
18	7C-952	Worm Shaft	1.4
19	6C-930	Counterweight	49.0
20	6C-899	Balance Arm - 12'	8.0
	8C-187	Balance Arm - 14'	12.0
	7C-681	Balance Arm - 16' - 18'	25.0
	8C-188	Balance Arm - 20'	32.5
21	7C-491	Wire Rope - 125'	13.8
	7C-138	Wire Rope - 100'	11.0
	7C-139	Wire Rope Clip	0.3
	7C-140	Eyebolt	0.4
	7C-141	Thimble	
22	7C-590	Connector Angle	0.9
23	7C-591	Hanger Angle	8.1
24	7C-592	Hanger - Short	4.5
25	8C-20	R. H. Adapter Bracket	0.8
26	8C-21	L. H. Adapter Bracket	0.8
27	8C-49	Roller Chain	1.0



WORM GEAR BOX ASSEMBLY



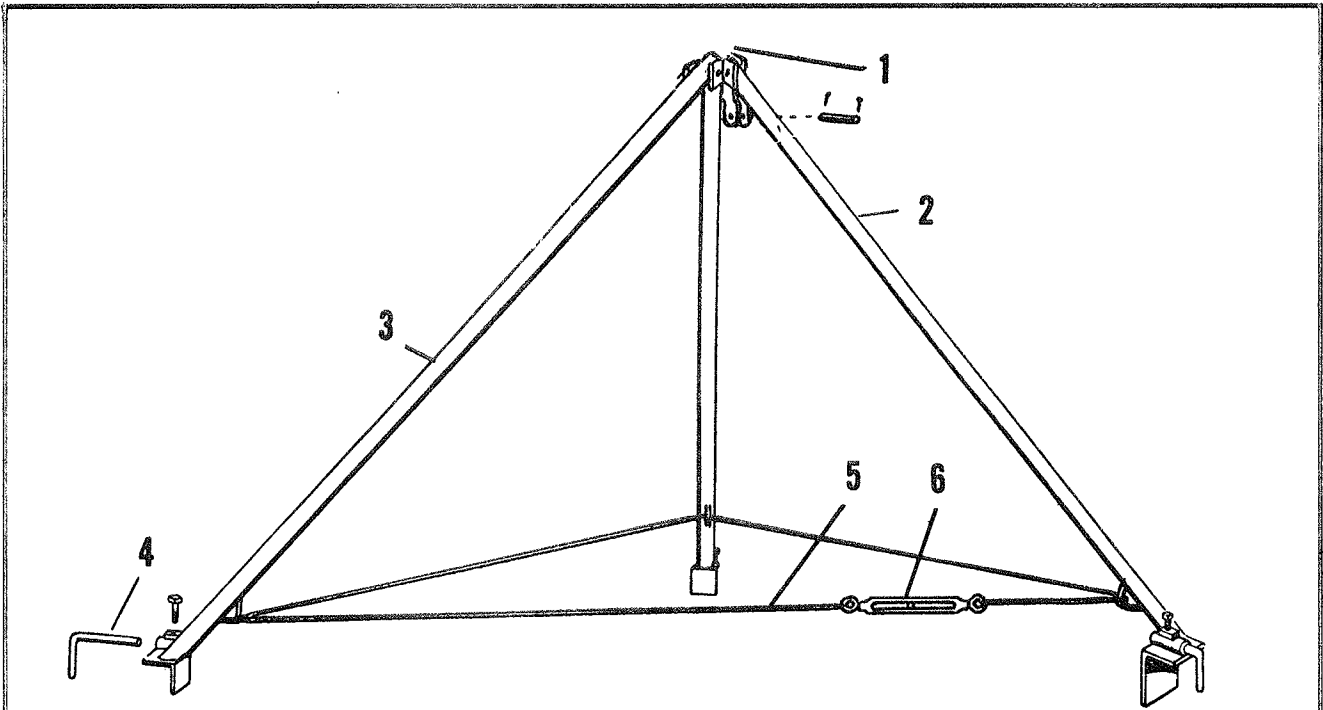
HANGER ASSEMBLY



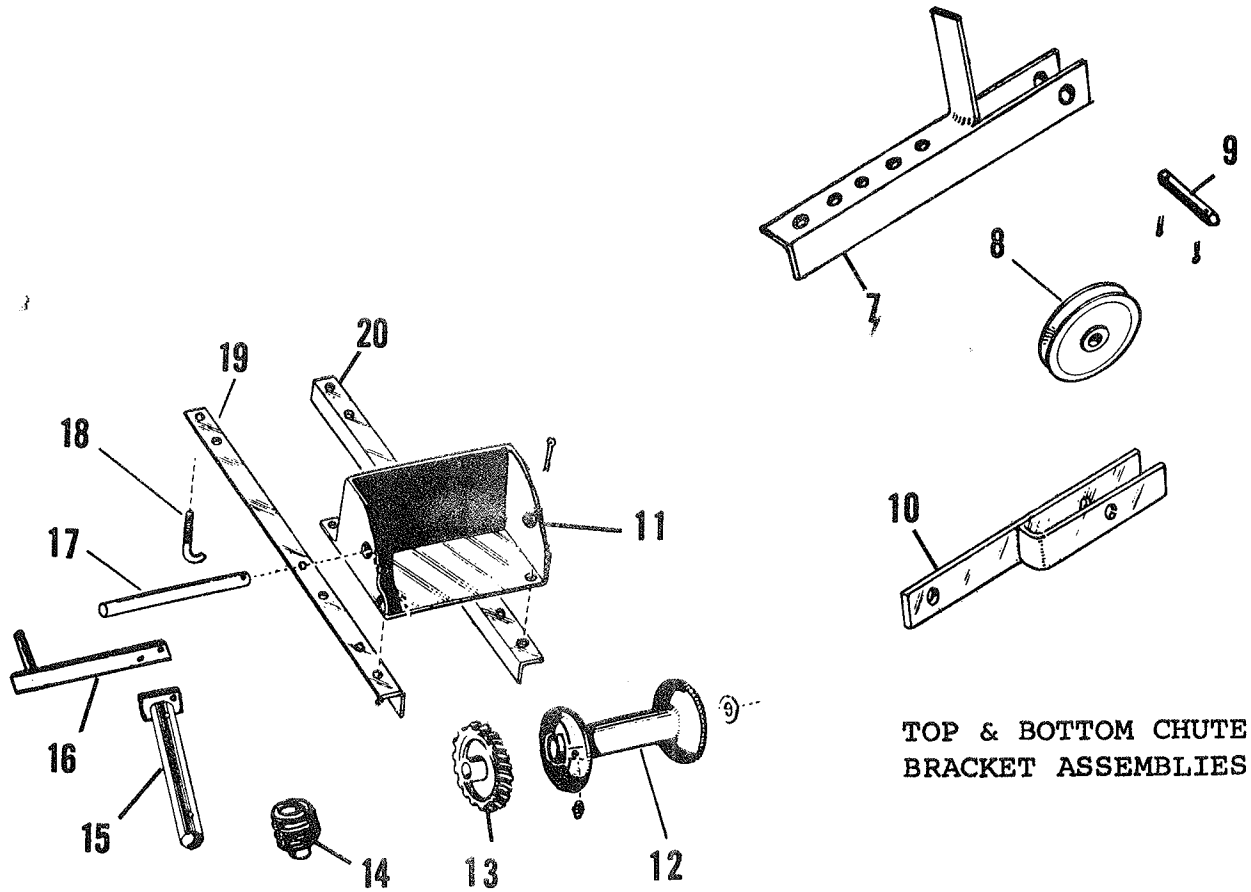
BALANCE WEIGHT AND ARM

TRIPOD, WINCH AND PULLEY BRACKET ASSEMBLIES

Index No.	Part No.	Part Name	Weight
1	8C-113	Tripod Bracket Assembly	5.0
*	6C-767	Tripod Pin - Long	0.3
*	6C-768	Tripod Pin - Short	0.2
2	6C-788	Tripod Leg Assembly - (Pulley Leg) 12'	23.0
	6C-789	Tripod Leg Assembly - (Pulley Leg) 14'	26.5
	6C-790	Tripod Leg Assembly - (Pulley Leg) 16'	28.5
	6C-791	Tripod Leg Assembly - (Pulley Leg) 18'	34.5
	6C-792	Tripod Leg Assembly - (Pulley Leg) 20'	37.5
3	6C-783	Tripod Leg 12'	22.8
	6C-784	Tripod Leg 14'	24.3
	6C-785	Tripod Leg 16'	27.5
	6C-786	Tripod Leg 18'	33.5
	6C-787	Tripod Leg 20'	36.5
4	6C-761	Safety Hook	0.5
5	7C-135	Wire Rope 12'	1.7
	7C-136	Wire Rope 14' - 16'	2.0
	7C-137	Wire Rope 18' - 20'	2.5
6	6C-766	Turnbuckle	0.8
	6C-762	Wire Rope Clip	0.1
7	6C-763	Pulley Bracket Assembly	2.0
8	6C-739	Cable Pulley	1.1
9	6C-769	Pulley Pin	0.1
10	6C-902	Pulley Clevis	1.5
11	7C-695	Winch Housing	20.6
12	6C-737	Winch Reel	9.8
13	6C-944	Worm Gear	5.0
14	6C-943	Worm	2.3
15	7C-129	Crank Shaft	2.0
16	7C-130	Winch Handle Assembly	2.0
*	7C-143	Electric Drill Attachment	0.4
17	7C-131	Reel Shaft	2.3
18	7C-134	J-Bolt	0.2
19	7C-132	Mounting Angle R. H.	4.6
20	7C-133	Mounting Angle L. H.	4.6



TRIPOD ASSEMBLY



TOP & BOTTOM CHUTE
BRACKET ASSEMBLIES

WINCH ASSEMBLY

