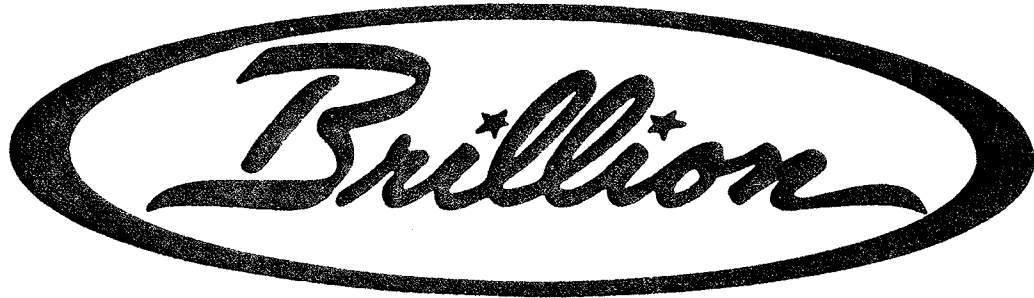


REPAIR PARTS CATALOG



SOIL GROOMER

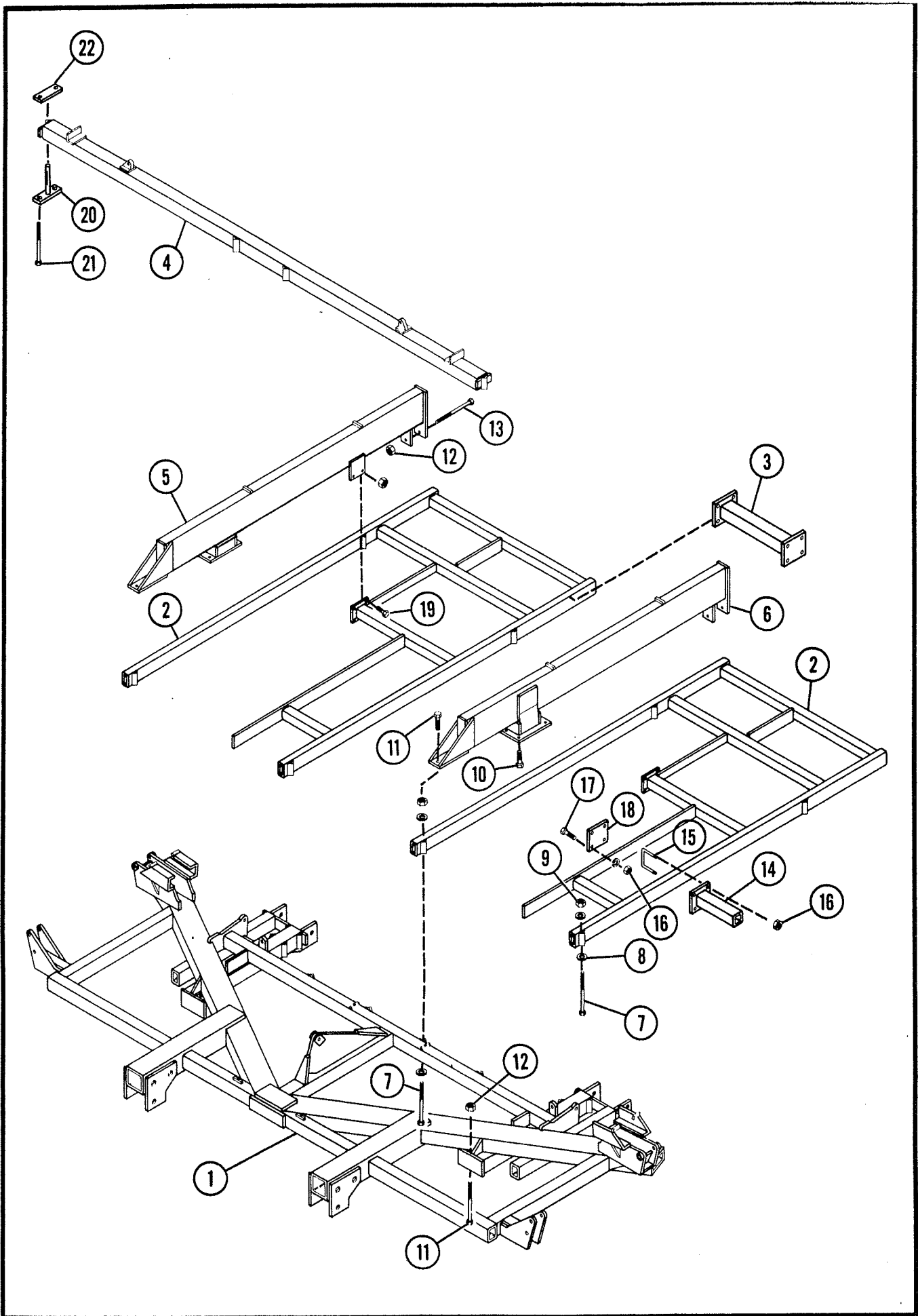
MODELS:	SGS-24	SGR-24	SGS-241	SGR-241
	SGS-24-1	SGR-24-1	SGS-241-1	SGR-241-1
	SGS-27	SGR-27	SGS-271	SGR-271
	SGS-27-1	SGR-27-1	SGS-271-1	SGR-271-1
	SGS-30	SGR-30	SGS-301	SGR-301
	SGS-30-1	SGR-30-1	SGS-301-1	SGR-301-1

MODEL NO.
DATE PURCHASED

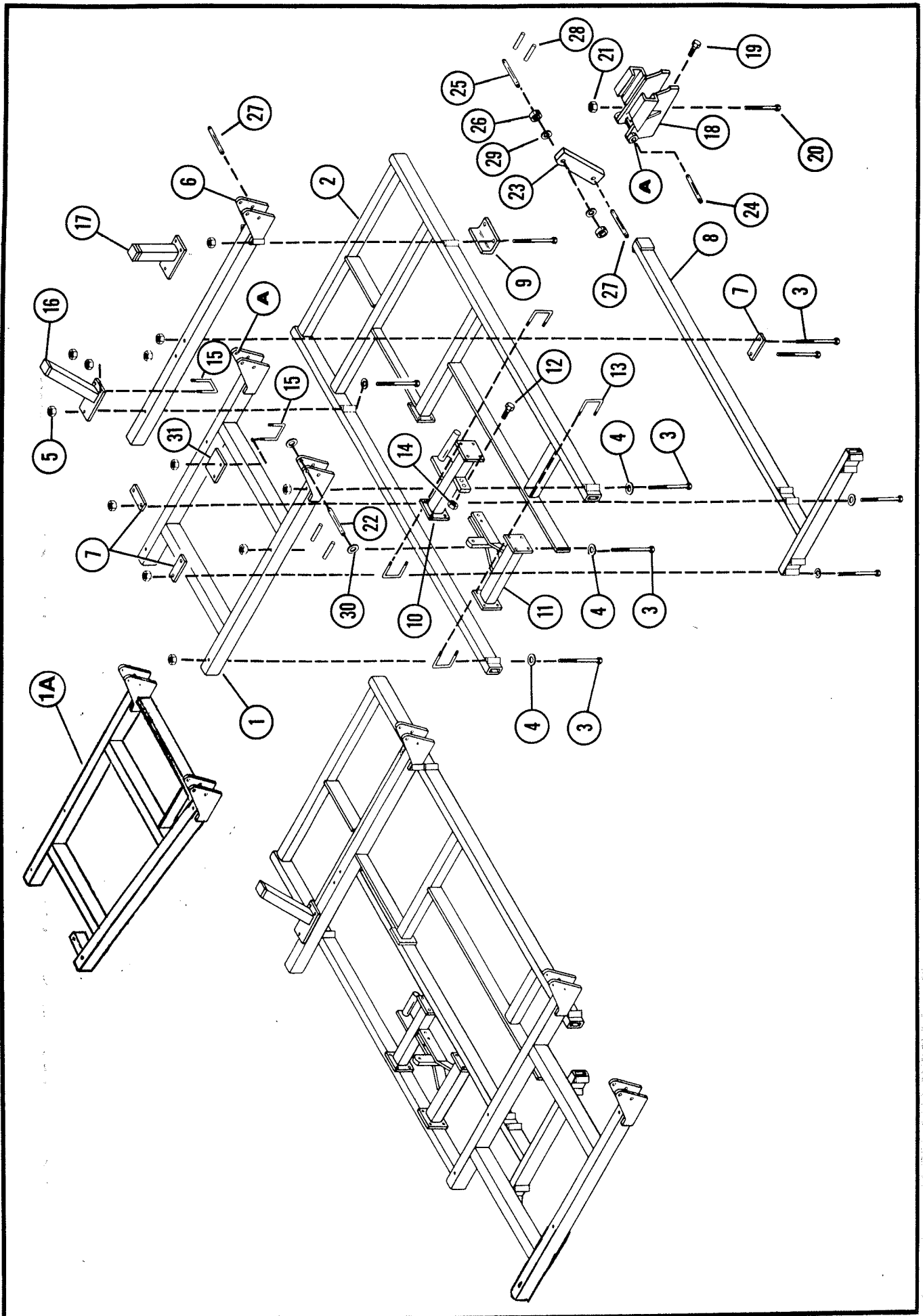
IMPORTANT!

Repair cannot be purchased retail direct from factory. Order through your Brillion dealer.

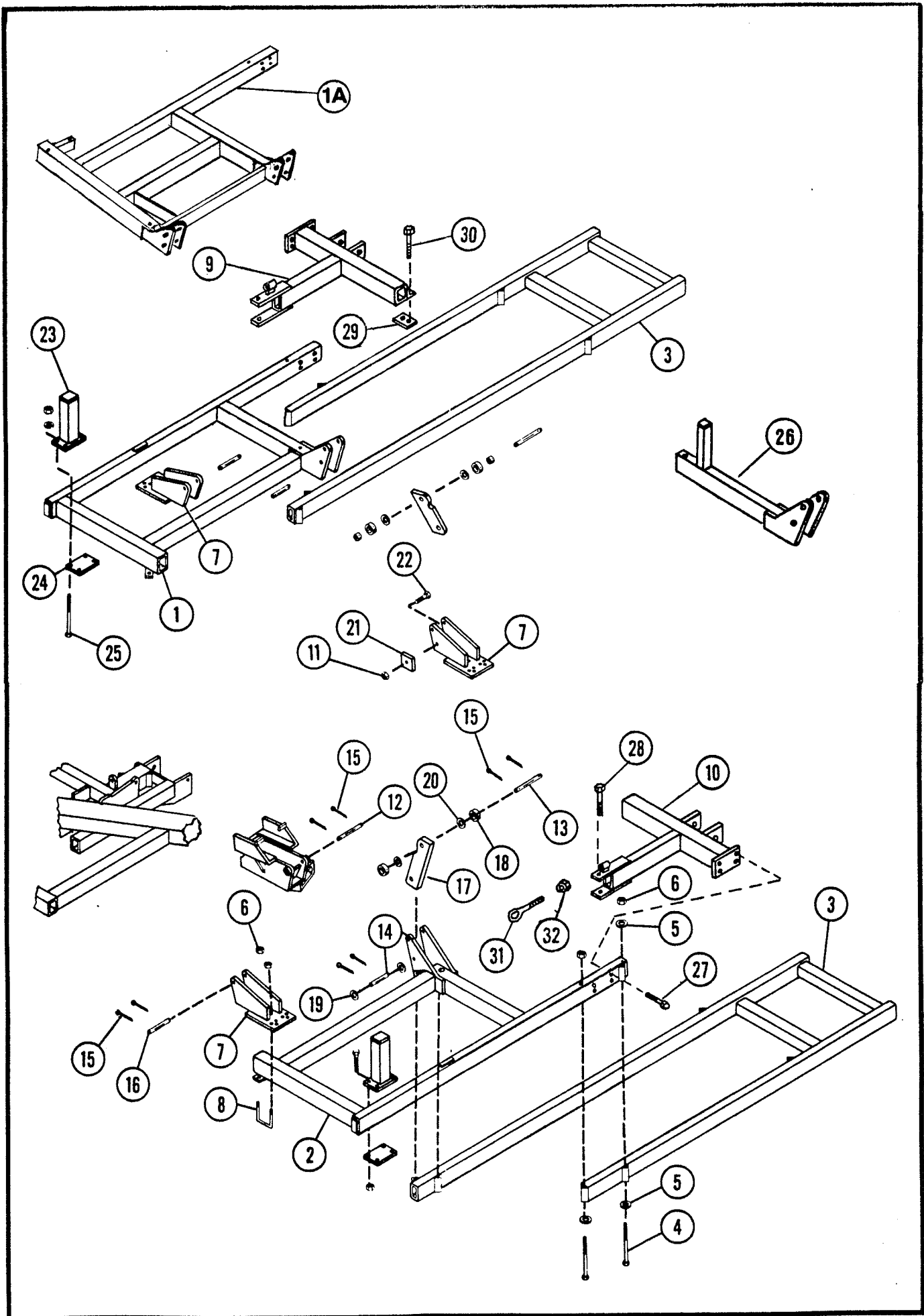
BRILLION IRON WORKS, INC.
BRILLION, WISCONSIN 54110



CENTER FRAME ASSEMBLY				
Index No.	Part No.	Description	No. Used	Weight
1	6J-24	Center Frame	1	1330.0
2	5J-949	Tooth Frame		303.0
3	6J-219	Extension	2	18.3
4	6J-69	Rear Super Tube	1	190.0
5	6J-92	Tube Assembly R.H.	1	232.0
6	6J-80	Tube Assembly L.H.	1	232.0
7	5J-912	Bolt, 5/8 x 9-1/2" Long		.9
8	5J-911	Washer (Special)		.2
9	1C-392	Nut, 5/8"		-
	1B-166	Lockwasher, 5/8"		-
10	6D-355	Capscrew, 5/8 x 6" Long		.7
11	6D-877	Machine Bolt, 3/4 x 10" Long	4	1.4
12	1C-210	Nut, 3/4"		.1
13	6D-300	Capscrew, 3/4 x 6" Long		.9
14	5J-909	Stub Extension - 12"		10.3
	5J-905	Stub Extension - 4-1/2"		6.0
	6J-701	Stub Extension - 6"		6.6
	5J-907	Stub Extension - 8-1/2"		8.2
	5J-902	Stub Extension - 17-1/2"		13.3
15	5J-915	U-Bolt, 1/2"		.6
16	1C-390	Nut, 1/2"		-
	1C-109	Lockwasher, 1/2"		-
17	1D-237	Capscrew, 1/2 x 2" Long	8	.2
18	5J-901	Plate	2	3.5
19	1C-216	Capscrew, 1/2 x 1-3/4" Long	4	.2
20	5J-869	Strap Assembly	2	2.4
21	8D-400	Machine Bolt, 5/8 x 10-1/2" Long	4	1.0
22	5J-870	Strap		1.7

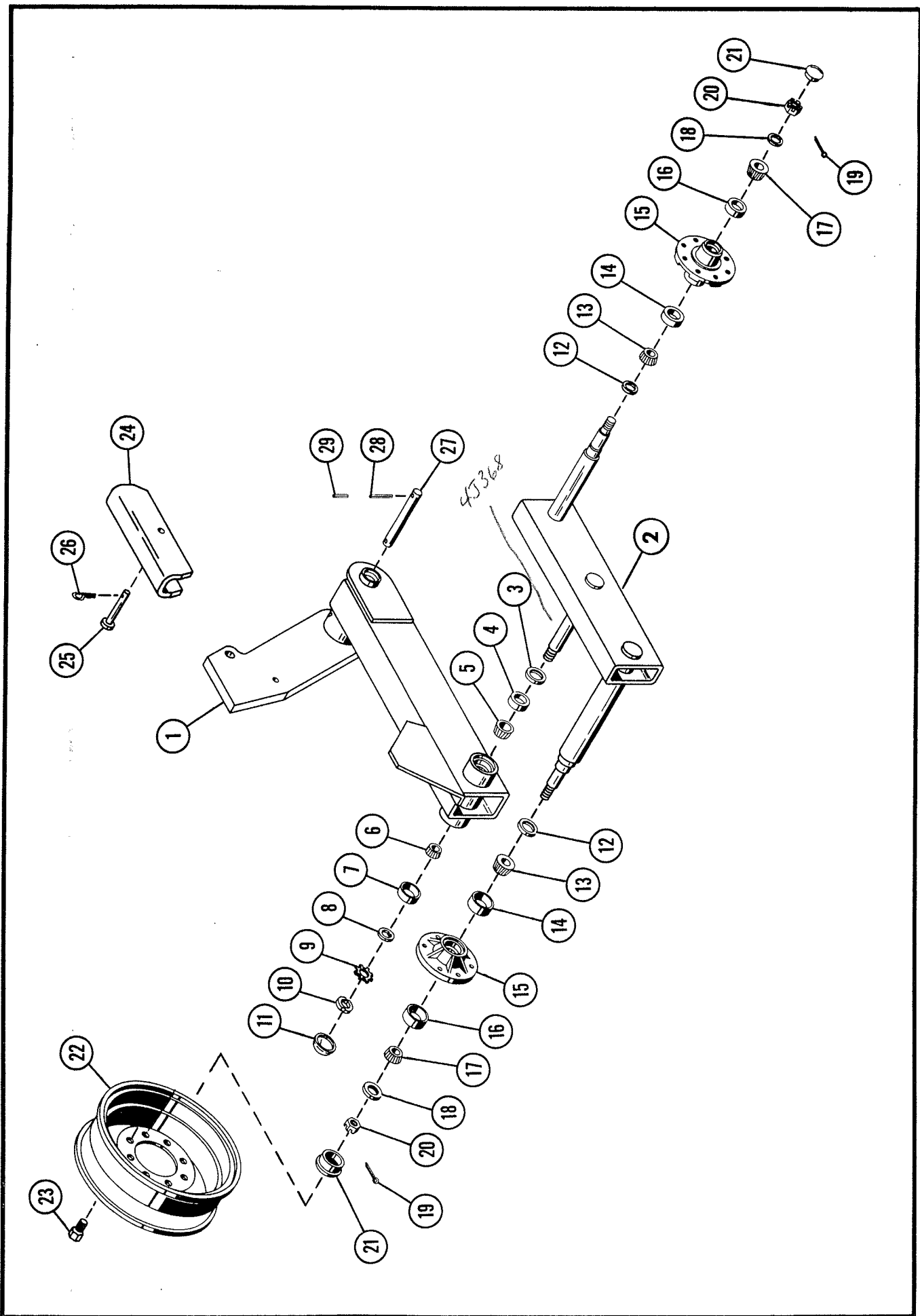


WING FRAME ASSEMBLY (27' & 30' MACHINES)				
Index No.	Part No.	Description	No. Used	Weight
1	6J-77	Wing Section (units shipped before 3/1/87)	2	206.0
1A	7J-956	Wing Section RH (shown) on units shipped	1	214.0
	7J-955	Wing Section LH (opposite) after 3/1/87	1	214.0
2	5J-949	Wing Tooth Frame	2	303.0
3	5J-912	Machine Bolt, 5/8 x 9-1/2" Long		.9
4	5J-911	Washer (special)		.2
5	1C-392	Nut, 5/8"		-
	1B-166	Lockwasher, 5/8"		-
6	6J-75	Wing Hinge Tube	2	86.0
7	6J-130	Strap		1.5
8	5J-875	Long Wing Tube	2	114.0
9	6J-131	Angle (not used after 03/01/89)	2	4.0
10	5J-874	Pin Assembly	2	34.0
11	6J-115	Lug Assembly - R.H. (Shown)	1	41.2
	6J-114	Lug Assembly - L.H. (Opposite)	1	41.2
12	8C-65	Capscrew, 5/8 x 3" Long, Grade 5	4	.2
13	5J-915	U-Bolt, 1/2"		.6
14	1C-390	Nut, 1/2"		-
	1C-109	Lockwasher, 1/2"		-
15	6J-50	U-Bolt, 5/8"		1.1
16	6J-121	Wing Stand (30' Machine)	4	27.0
17	6J-124	Wing Stand (27' Machine)	4	14.5
18	5J-986	Lift Hinge	2	79.0
19	2D-474	Capscrew, 5/8 x 1-3/4" Long	4	.1
20	6D-300	Capscrew, 3/4 x 6" Long	2	.8
21	1C-210	Nut, 3/4"	2	.1
	1C-211	Lockwasher	2	-
22	4J-575	Pin	4	2.1
23	6J-42	Lift Link	4	14.0
24	6J-44	Hinge Pin	4	1.9
25	6J-45	Cylinder Pin	4	1.7
26	6J-47	Roller Asserbly	8	1.7
28	2D-894	Roll Pin, 1/4 x 2" Long		-
29	1C-871	Flat Washer, 1"		-
30	6C-406	Flat Washer, 1-1/4"		.1
31	6J-120	Plate	2	2.0

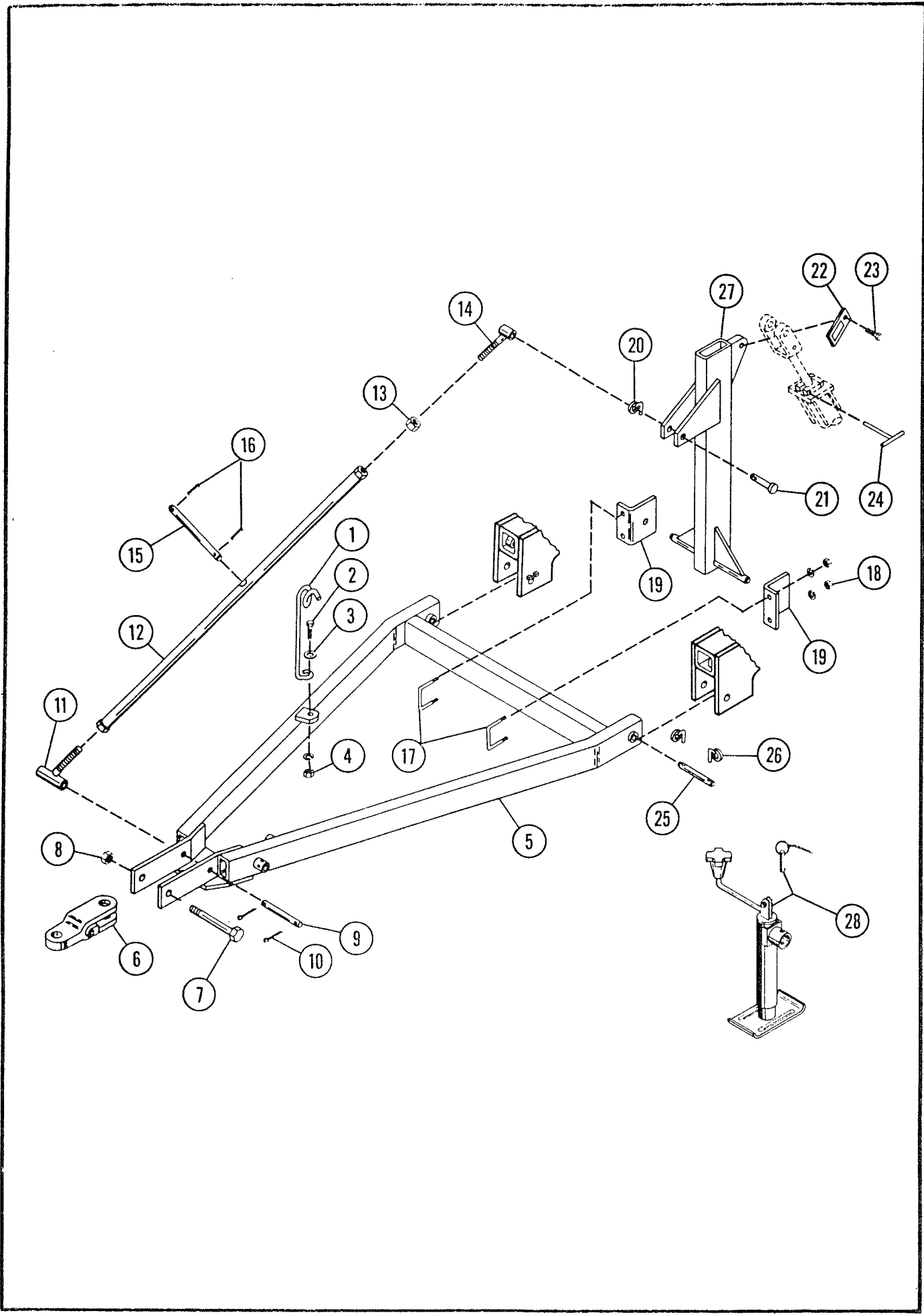


WING FRAME ASSEMBLY (24' MACHINES)				
Index No.	Part No.	Description	No. Used	Weight
1A	9J034	Front Wing Frame, R.H.	Used on machines shipped after 11/1/88	1 223.0
* 2A	9J035	Front Wing Frame, L.H.		
3	7J457	Wing Tooth Frame		
1	7J-898	Front Wing Frame, R.H.	Machines shipped between 3/1/87 and 11/1/88	1 223.0
2	7J-897	Front Wing Frame, L.H.		
3	7J-457	Wing Tooth Frame		
1	7J-458	Front Wing Frame, R.H.	Machines shipped between 7/1/84 and 3/1/87	1 249.4
2	7J-459	Front Wing Frame, L.H.		
3	7J-457	Wing Tooth Frame		
1	6J-372	Front Wing Frame, R.H.	Used on machines shipped before 7/1/84	1 253.0
2	6J-31	Front Wing Frame, L.H.		
3	5J-973	Wing Tooth Frame		
4	5J-912	Bolt, 5/8 x 9-1/2" Long		.9
5	5J-911	Washer (Special)		.2
6	1C-392	Nut, 5/8"		-
	1B-166	Lockwasher, 5/8"		-
7	5J-983	Hinge	4	38.0
8	6J-50	U-Bolt, 5/8"		1.1
9	7J461	Anchor Assembly, R.H.	Used on machines shipped after 7/1/84	1 38.5
10	7J-450	Anchor Assembly, L.H.		
11	1C-210	Nut, 3/4"		.1
	1C-211	Lockwasher, 3/4"		-
12	6J-44	Hinge Pin	2	2.6
13	6J-45	Cylinder Pin	2	1.7
14	6J-46	Cylinder Pin	2	1.9
15	2D-894	Roll Pin, 1/4 x 2"		-
16	4J-575	Hinge Pin	4	2.3
17	6J-42	Lift Link	2	14.0
18	6J-47	Roller Assembly	4	1.7
19	6C-406	Flat Washer, 1-1/4"		.1
20	1C-871	Flat Washer, 1"		-
21	6J-683	Block	4	2.2
22	3D-510	Capscrew, 3/4 x 2-1/2" Long		.4
23	5J-976	Wing Stand	2	9.5
24	5J-979	Plate	2	1.7
25	3D-925	Capscrew, 3/8 x 5" Long	8	.2
	1C-183	Lockwasher, 3/8"	8	-
	1C-277	Nut, 3/8"	8	-
26	5J-982	Wing Hinge Tube	2	63.0
27	5D-871	Capscrew, 1/2 x 3-1/2" Long	Used on machines shipped after 7/1/84	8 .3
	1C-109	Lockwasher, 1/2"		
	1C-390	Nut, 1/2"		
28	6D-355	Capscrew, 5/8 x 6" Long	2	.6
29	9D-973	Strap	2	1.3
30	1C-266	Capscrew, 1/2 x 5-1/2" Long	4	.3
31	4J-440	Eye Bolt	2	1.8
32	7D-430	Jam Nut, 1"	4	-

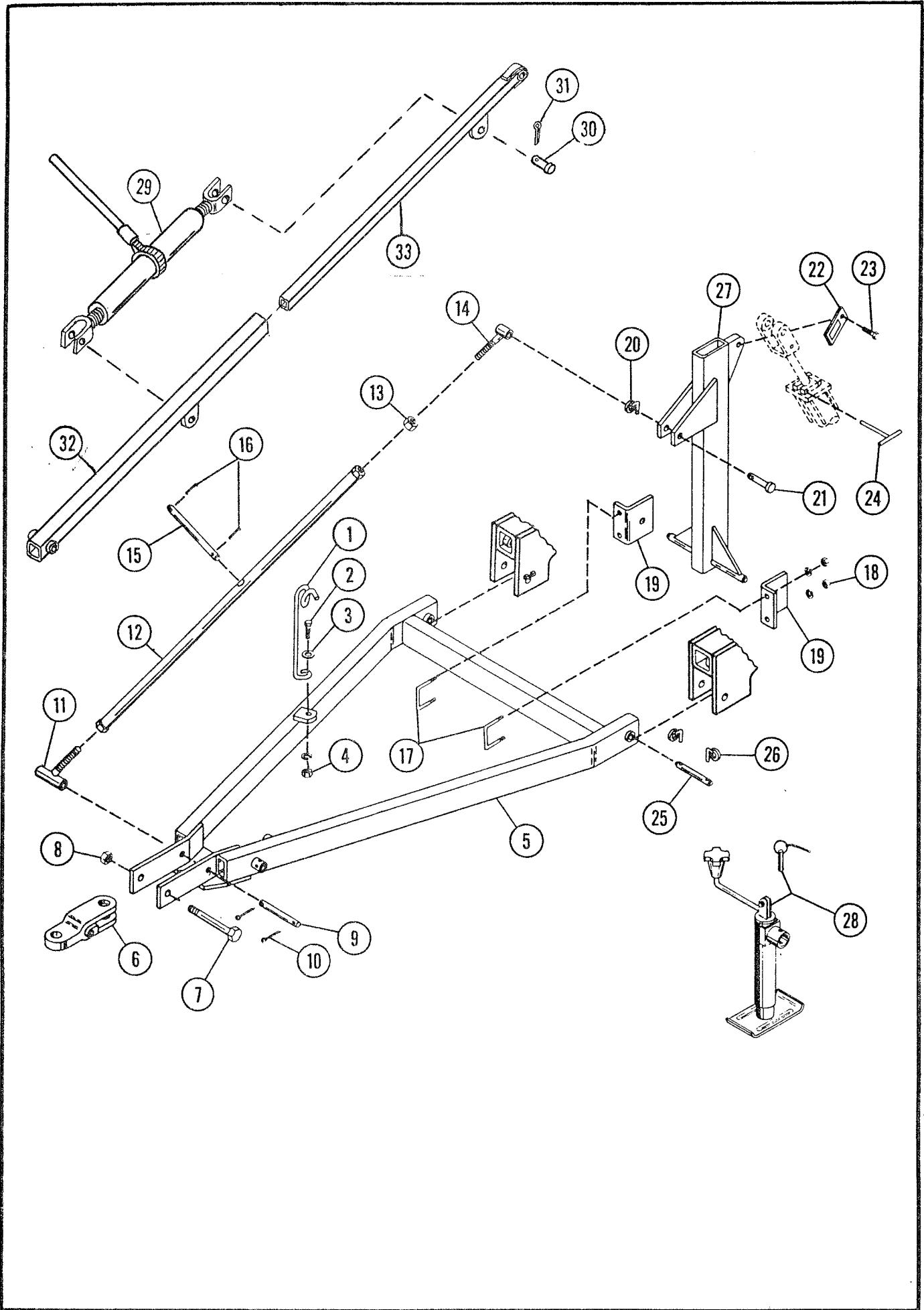
*Not Shown (opposite R.H.)



WALKING BEAM ASSEMBLY				
Index No.	Part No.	Description	No. Used	Weight
1	5J-922	L.H. Wheel Arm (Shown)	1	87.0
	5J-920	R.H. Wheel Arm (Opposite)	1	87.0
2	6J-932	Axle Beam (Less Hubs)	2	64.0
3	4J-565	Seal	2	.1
4	7C-762	Bearing Cup #LM501310	2	.4
5	7C-763	Bearing Cone #LM501349	2	.5
6	1D-808	Bearing Cone #LM29749	2	.4
7	1D-807	Bearing Cup #LM29710	2	.2
8	5J-336	Keyed Washer	2	-
9	9C-435	Lockwasher #TW107	2	-
10	9C-434	Lock Nut #TN07	2	.2
11	4J-554	Hub Cap	2	.2
12	3J-396	Seal	4	.1
13	3D-531	Bearing Cone #LM603049	4	.5
14	3D-532	Bearing Cup #LM603011	4	.3
15	3J-394	Wheel Hub	4	21.5
16	5C-914	Bearing Cup #LM67010	4	.3
17	5C-913	Bearing Cone #LM67048	4	.3
18	3J-397	Flat Washer	4	-
19	3C-350	Cotter Pin	4	-
20	3C-173	Slotted Nut ^{3/8}	4	.2
21	6D-337	Hub Cap	4	.1
22	5J-873	Wheel	4	24.0
23	3J-609	Wheel Bolt		.1
24	6J-651	Transport Lock, 8-1/2" Long, 2-9/16" Wide		4.7
	6J-650	Transport Lock, 8-1/2" Lg., 2-1/16" Wide (24' Units)		3.8
	6J-649	Transport Lock, 10" Long (27' & 30' Units)		4.2
25	3C-335	Clevis Pin	2	.3
26	4C-856	Hairpin Cotter	2	-
27	2J-736	Pin	2	6.5
28	4C-858	Roll Pin, 5/16 x 2" Long	4	-
29	1C-174	Roll Pin, 3/16 x 2" Long	4	-



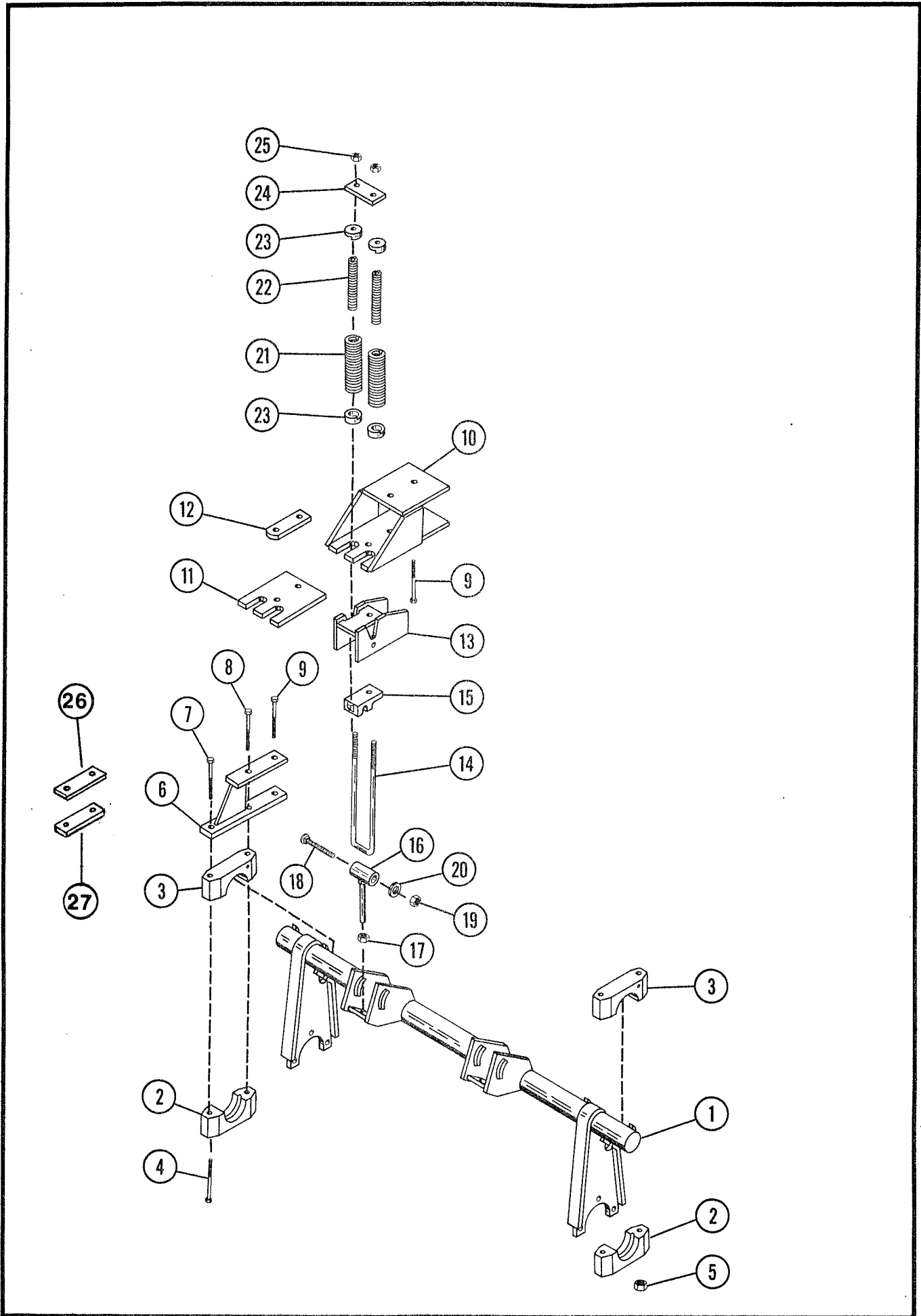
HITCH ASSEMBLY (24' MACHINE)				
Index No.	Part No.	Description	No. Used	Weight
1	6D-333	Hose Holder	1	1.8
2	5C-460	Capscrew, 5/8 x 2" Long	1	.2
3	1C-122	Flat Washer, 5/8"	1	-
4	1C-392	Nut, 5/8"	1	-
	1B-166	Lockwasher, 5/8"	1	-
5	6J-93	Drawbar Weldment	1	242.0
6	2J-776	Hitch Casting	1	26.0
7	3J-607	Machine Bolt, 1-1/4 x 9-1/2" Long	1	3.6
8	2J-783	Nut, 1-1/4" Lock	1	.2
9	4D-100	Pin, 1 x 7-7/16" Long	1	1.7
10	1C-869	Cotter Pin, 1/4 x 2" Long	2	-
11	2J-830	L.H. Rod Screw	1	4.7
12	2J-764	Brace Rod	1	26.5
13	2J-766	Nut, 1-1/4" Jam	1	.1
14	2J-765	R.H. Rod Screw	1	3.1
15	8D-590	Rod	1	1.1
16	7C-940	Roll Pin, 3/16 x 7/8" Long	2	-
17	5J-913	U-Bolt, 5/8"	2	1.0
18	1C-392	Nut, 5/8"	4	-
	1B-166	Lockwasher, 5/8"	4	-
19	6J-38	Angle	2	6.9
20	5D-110	Klik-Pin, 1/4 x 1-3/4"	1	.1
21	6D-529	Clevis Pin, 1 x 4-1/2" Long	1	.3
22	6J-652	Depth Gage	1	-
23	6J-658	Capscrew, 3/8-24 NF x 1/2" Long	1	-
24	6J-655	"T" Handle	1	.6
25	6J-432	Pin Assembly	2	3.4
26	2J-784	Klik-Pin	2	.2
27	5J-934	Front Lift Arm	1	61.0
28	3J-880	Drawbar Jack	1	19.0



HITCH ASSEMBLY (27' & 30' MACHINES)

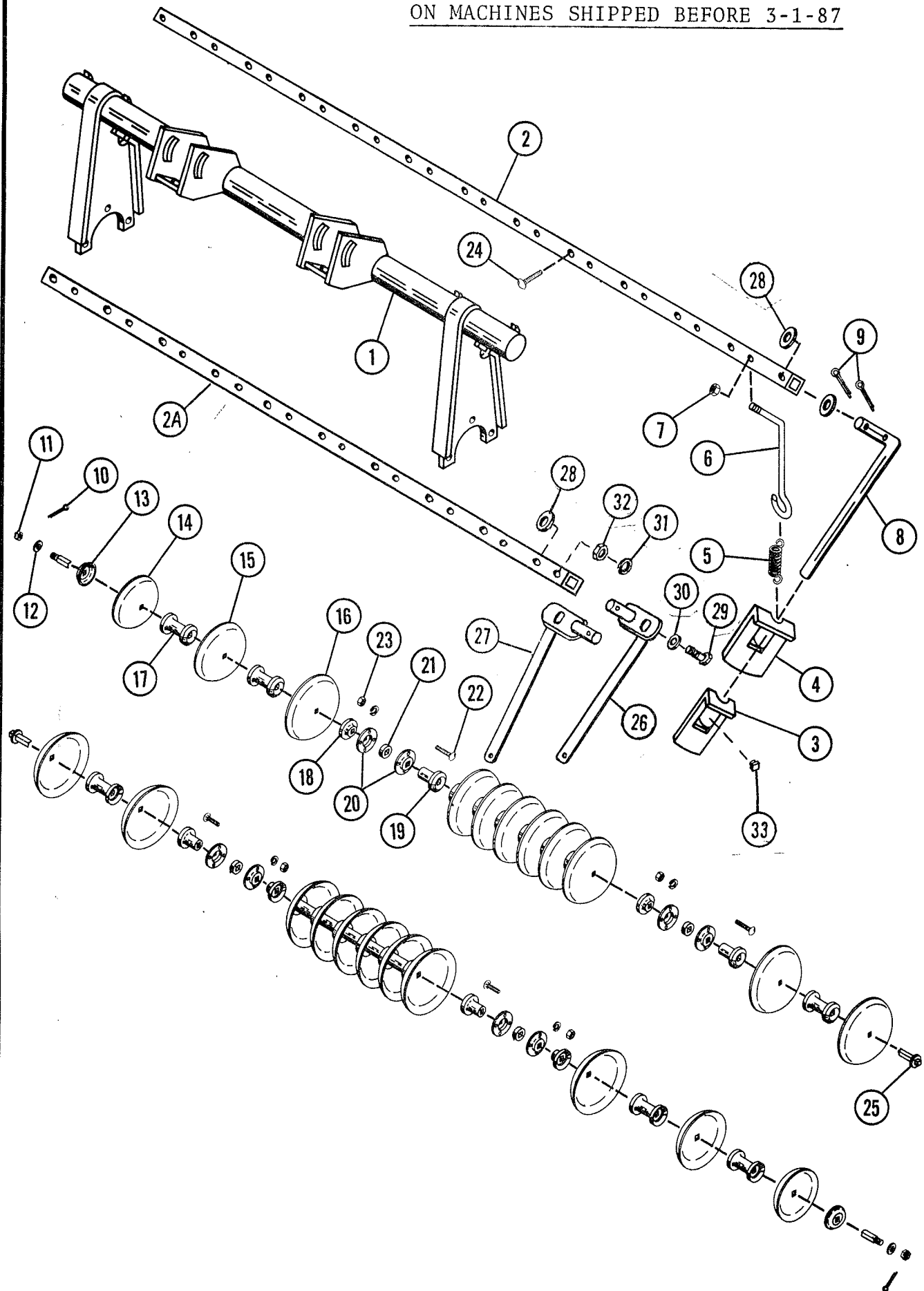
Index No.	Part No.	Description	No. Used	Weight
1	6D-333	Hose Holder	1	1.8
2	5C-460	Capscrew, 5/8 x 2" Long	1	.2
3	1C-122	Flat Washer, 5/8"	1	-
4	1C-392	Nut, 5/8"	1	-
	1B-166	Lockwasher, 5/8"	1	-
5	6J-93	Drawbar Weldment	1	242.0
6	2J-776	Hitch Casting	1	26.0
7	3J-607	Machine Bolt, 1-1/4 x 9-1/2" Long	1	3.6
8	2J-783	Nut, 1-1/4" Lock	1	.2
9	4D-100	Pin	1	1.7
10	1C-869	Cotter Pin	2	-
11	2J-830	L.H. Rod Screw	1	4.7
12	2J-764	Brace Rod	1	26.5
13	2J-766	Nut, 1-1/4" Jam	1	.1
14	2J-765	R.H. Rod Screw	1	3.1
15	8D-590	Rod	1	1.1
16	7C-940	Roll Pin	2	-
17	5J-913	U-Bolt, 5/8"	2	1.0
18	1C-392	Nut, 5/8"	4	-
	1B-166	Lockwasher, 5/8"	4	-
19	6J-38	Angle	2	6.9
20	5D-110	Klik-Pin, 1/4 x 1-3/4" Long	1	.1
21	6D-529	Clevis Pin	1	.3
22	6J-652	Depth Gage	1	-
23	6J-658	Capscrew, 3/8-24NF x 1/2" Long	1	-
24	6J-655	"T" Handle	1	.6
25	6J-432	Pin	2	3.4
26	2J-784	Klik-Pin	2	.2
27	5J-934	Front Lift Arm	1	61.0
28	3J-880	Drawbar Jack	1	19.0
29	7J-237	Ratchet Jack	1	15.0
30	8D-99	Clevis Pin	2	.2
31	6C-468	Cotter Pin	2	-
32	7J-230	Lower Brace	1	32.5
33	7J-234	Upper Brace	1	31.2

Used Before
April 1, 1984



DISK GANG MOUNTING				
Index No.	Part No.	Description	No. Used	Weight
1	6J-133	Disk Rockshaft - 6'		120.0
	6J-134	Disk Rockshaft - 3'		88.0
2	7D-583	Bearing Cap		5.3
3	8D-734	Bearing		4.5
4	6J-188	Capscrew, 5/8 x 5-11/16" Long (Special)	4	.5
5	1C-392	Nut, 5/8" Hex		-
6	6J-170	Bearing Bracket - 11" Long		8.2
	7J-881	Bearing Bracket - 10" Long		6.0
7	3C-222	Bolt, 5/8 x 6-1/2" Long		.6
8	6J-165	Bolt, 5/8 x 11" Long		1.0
9	6D-355	Bolt, 5/8 x 6" Long		.6
10	6J-166	Spring Bracket		21.7
11	6J-174	Inner Spring Plate		7.8
12	6J-175	Strap		1.0
13	6J-142	Coupler		5.9
14	6J-143	U-Bolt, 5/8"		2.7
15	6J-457	U-Bolt Clip		1.5
16	6J-146	Adjusting Bolt		2.6
17	6C-114	Nut, 3/4" Jam		-
18	6J-187	Carriage Bolt, 3/4 x 5-1/2" Long		.8
19	1C-210	Nut, 3/4" Hex		.1
	1C-211	Lockwasher, 3/4"		-
20	1C-133	Flat Washer, 3/4"		
21	6J-460	Spring - Outer		4.0
22	6J-461	Spring - Inner (Sometimes Required)		1.3
23	6J-459	Cap		1.0
24	6J-458	Strap		.4
25	5C-461	Lock Nut, 5/8"		-
26	7J-880	Strap, 1/2 x 2 x 7" Long		1.9
27	7J-900	Strap, 5/8 x 7" Long		2.4
*	9C-59	Bolt, 5/8 x 7" Long		.7
		* Not Shown		

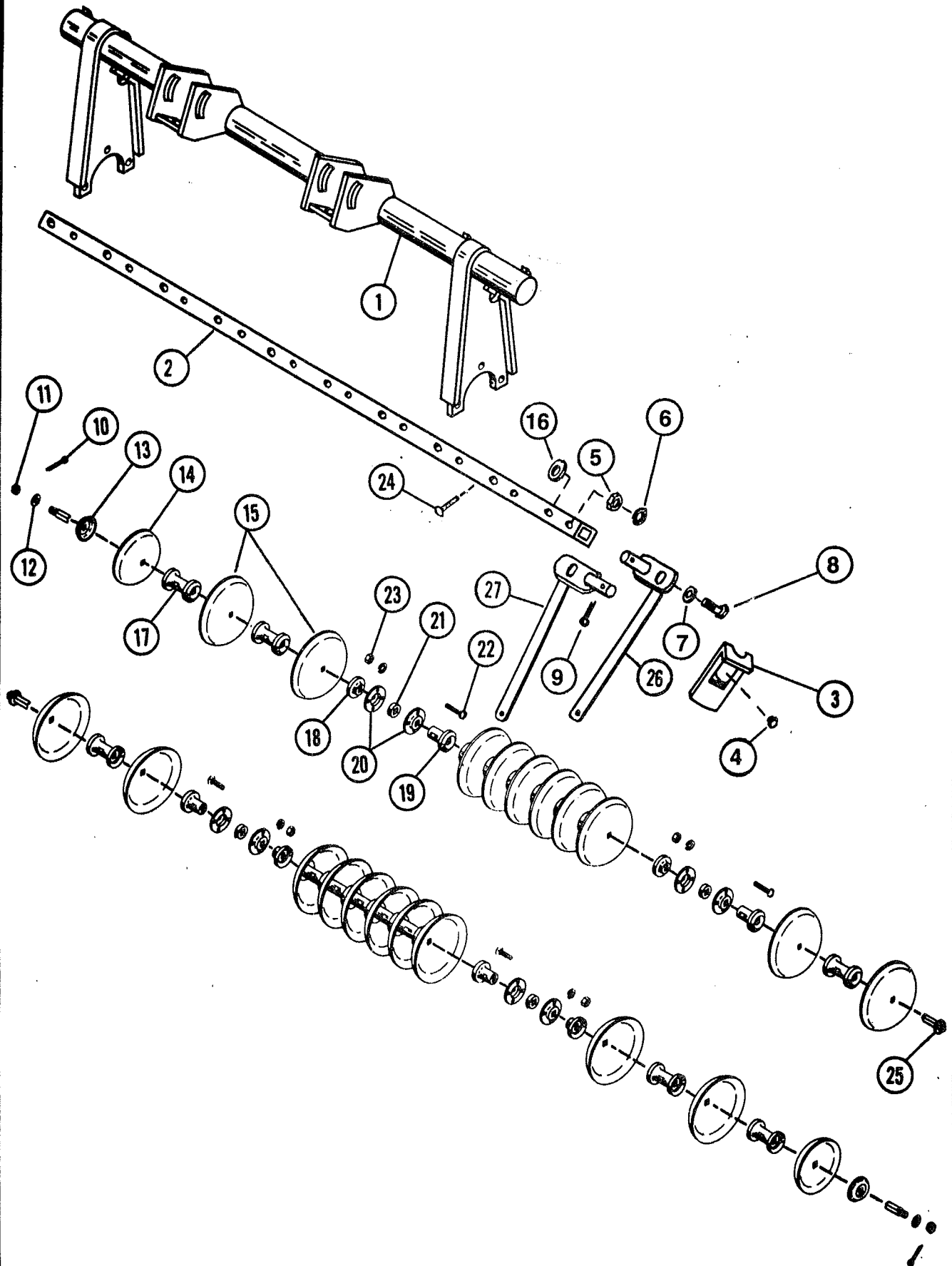
ON MACHINES SHIPPED BEFORE 3-1-87



DISK GANG ASSEMBLY
(Machines Shipped Before 3/1/87)

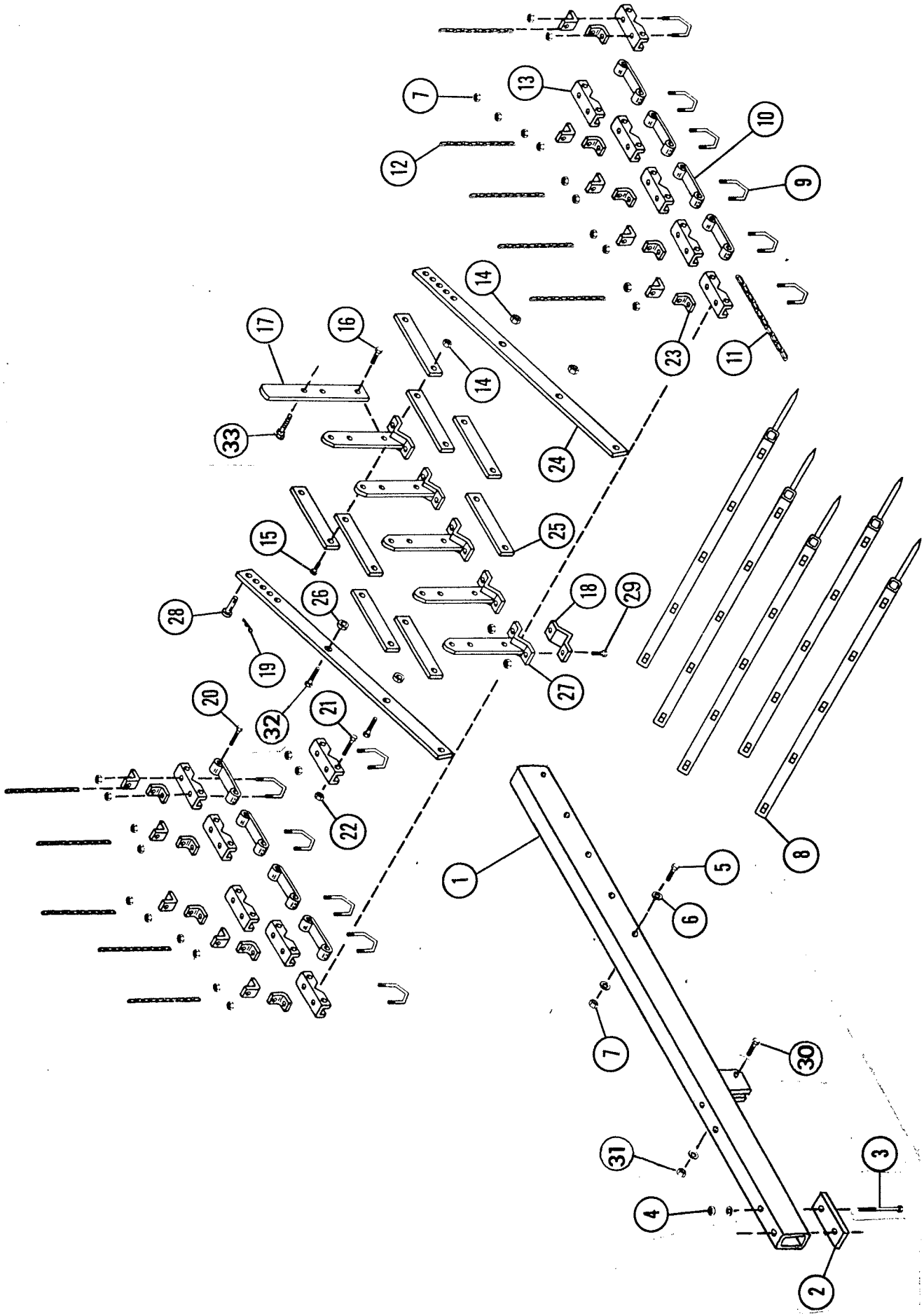
Index No.	Part No.	Description	No. Used	Weight
1	6J-133	Disk Rockshaft - 6'		120.0
	6J-134	Disk Rockshaft - 3'		88.0
2	6J-135	Scraper Bar - 35-3/4" Long	On Machines Shipped Before Jan. 1, 1984	11.0
	6J-136	Scraper Bar - 50-3/4" Long		15.6
	6J-137	Scraper Bar - 73-1/4" Long		22.6
	6J-138	Scraper Bar - 88-1/4" Long		27.2
2A	7J-171	Scraper Bar - 35" Long	On Machines Shipped After Jan. 1, 1984	10.8
	7J-172	Scraper Bar - 50" Long		15.4
	7J-173	Scraper Bar - 70-1/4" Long		21.6
	7J-174	Scraper Bar - 85-1/4" Long		26.3
3	6J-598	Scraper END		1.3
4	6J-147	Scraper all over		1.9
5	4C-264	Spring	On Machines	.2
6	6J-186	Eye Bolt	Shipped Before	.1
7	6J-150	Flanged Lock Nut	Jan. 1, 1984	-
8	6J-148	Scraper Arm		1.8
9	1C-788	Cotter Pin		-
10	6D-49	Cotter Pin		-
11	2J-716	Slotted Nut, 1-1/2"		.2
12	7D-795	Washer, 1-1/2"		.1
13	6J-57	End Washer		3.6
14	6J-56	End Disk		8.8
15	6J-593	Disk, 18"		12.6
16	6J-55	Disk		15.6
17	5J-863	Spool		18.5
18	5J-862	Spool, Concave		7.0
19	5J-861	Spool, Convex		11.4
20	3J-132	Bearing Flange		.7
21	3J-131	Bearing		2.8
22	6C-347	Carriage Bolt, 1/2 x 1-1/4" Long		.1
	2C-675	Carriage Bolt, 1/2 x 1-1/2" Long		.1
23	1C-390	Nut, 1/2"		-
	1C-109	Lockwasher, 1/2"		-
24	8C-679	Carriage Bolt, 1/2 x 2-1/2" Long		.2
25	6J-53	Shaft Weldment, 38-1/4" Long		25.8
	6J-62	Shaft Weldment, 48-3/4" Long		32.5
	6J-54	Shaft Weldment, 71-1/4" Long		48.8
	6J-64	Shaft Weldment, 86-1/4" Long		56.4
26	7J-169	L.H. Scraper Arm	On Machines Shipped After Jan. 1, 1984	2.0
27	7J-170	R.H. Scraper Arm		2.0
28	2C-458	Flat Washer, 3/4" SAE		-
29	5D-667	Capscrew, 3/8 x 2-1/2" Long		.1
30	1C-182	Flat Washer, 3/8"		-
31	1C-183	Lockwasher, 3/8"		-
32	1C-277	Nut, 3/8"		-
33	7J-176	Sq. Head Set Screw		-

ON MACHINES SHIPPED AFTER 3-1-87



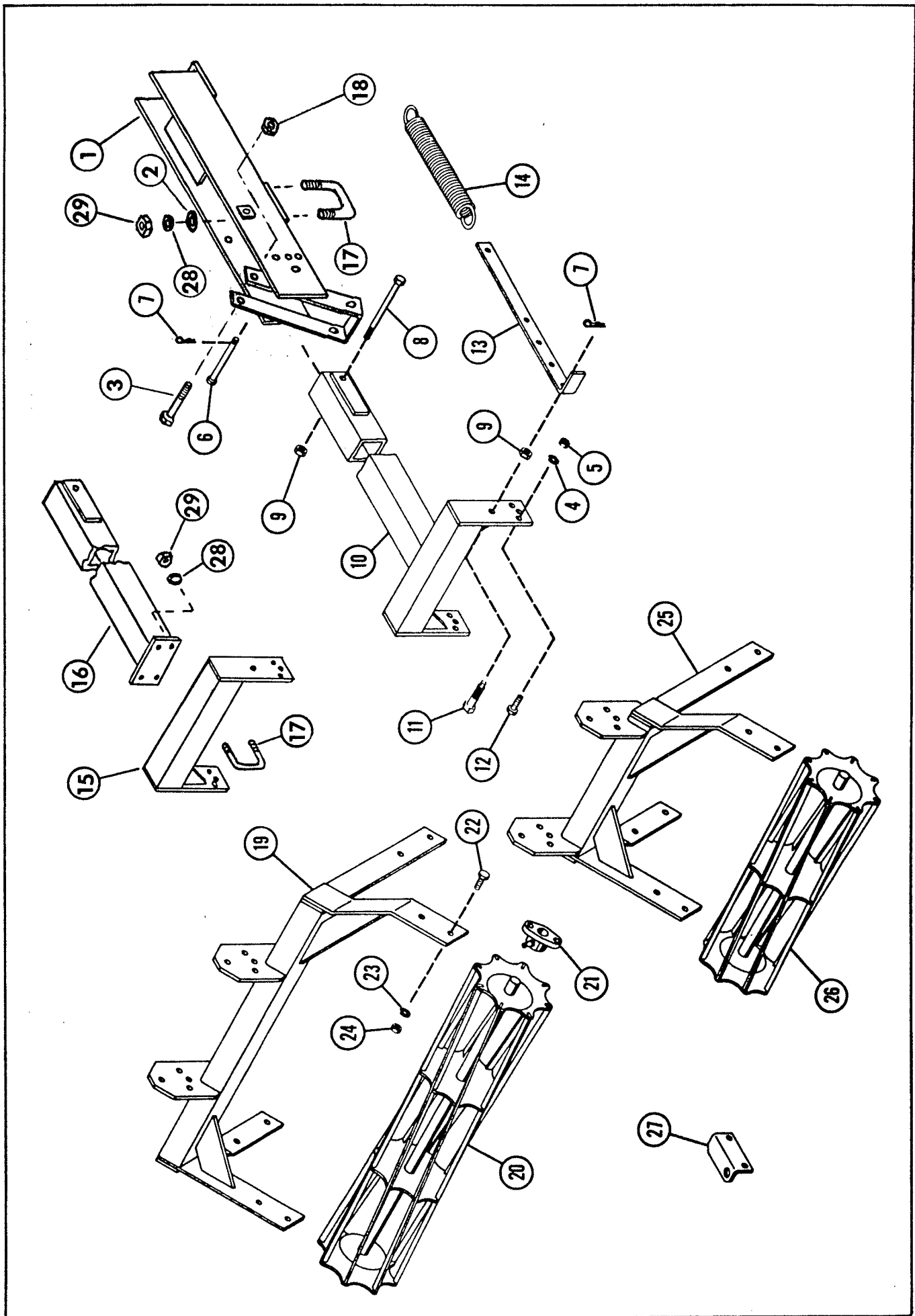
DISK GANG ASSEMBLY
(Machines Shipped After 3/1/87)

Index No.	Part No.	Description	Weight
1	6J-133	Disk Rockshaft - 6'	120.0
	6J-134	Disk Rockshaft - 3'	
2	7J-172	Scraper Bar - 50" Long	88.0
	7J-961	Scraper Bar - 72" Long	15.4
	7J-942	Scraper Bar - 80" Long	22.2
	7J-174	Scraper Bar - 85 1/4" Long	24.6
	6J-598	Scraper	26.3
3	7J-176	Sq. Hd. Set Screw	1.3
4	1C-277	Nut, 3/8"	-
5	1C-183	Lock Washer, 3/8"	-
6	1C-182	Flat Washer	-
7	5D-667	Capscrew, 3/8 x 2 1/2" Long	-
8	1C-788	Cotter Pin	.1
9	6D-49	Cotter Pin	-
10	2J-716	Slotted Nut, 1 1/2"	-
11	7D-795	Washer, 1 1/2"	.2
12	6J-57	End Washer	.1
13	6J-56	End Disk - 16"	3.6
14	6J-593	Disk - 18"	8.8
15	2C-458	Flat Washer, 3/4" SAE	12.6
16	5J-863	Spool	-
17	5J-862	Spool Concave	18.5
18	5J-861	Spool Convex	7.0
19	3J-132	Bearing Flange	11.4
20	3J-131	Bearing	.7
21	6C-347	Carriage Bolt, 1/2 x 1 1/4" Long	2.8
	2C-675	Carriage Bolt, 1/2 x 1 1/2" Long	.1
22	1C-390	Nut, 1/2"	.1
	1C-109	Lock Washer, 1/2"	-
23	8C-679	Carriage Bolt, 1/2 x 2 1/2" Long	-
24	6J-62	Shaft Weldment, 48 3/4" Long	.2
	6J-54	Shaft Weldment, 71 1/4" Long	32.5
	7J-921	Shaft Weldment, 78 3/4" Long	48.8
	6J-64	Shaft Weldment, 86 1/4" Long	51.4
	7J-169	L.H. Scraper Arm	56.4
25	7J-170	R.H. Scraper Arm	2.0
26			2.0

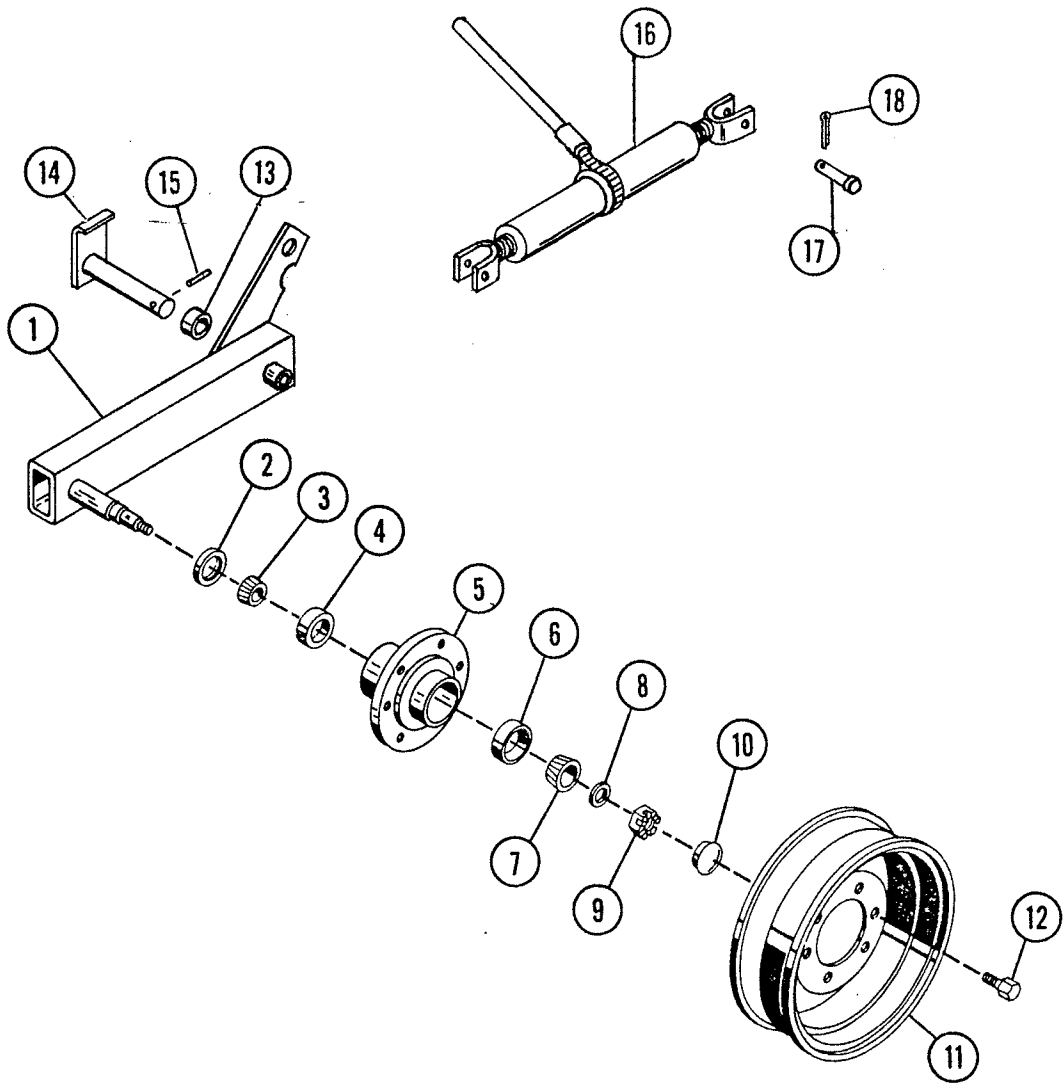


DRAG BAR ASSEMBLY				
Index No.	Part No.	Description	No. Used	Weight
1	6J-989	Support Tube		71.6
2	6J-130	Strap		1.5
3	5D-366	Machine Bolt, 5/8 x 8-1/2" Long		.8
4	1C-392	Nut, 5/8"		-
	1B-166	Lockwasher		-
5	8C-528	Capscrew, 1/2 x 3" Long		.3
6	1C-120	Flat Washer, 1/2"		-
7	1C-390	Nut, 1/2"		-
	1C-109	Lockwasher, 1/2"		-
8	7J-102	Spike Bar Assembly (11 Spikes)		58.3
	6J-590	Spike Bar Assembly (10 Spikes)		52.8
	6J-589	Spike Bar Assembly (9 Spikes)		47.3
	6J-588	Spike Bar Assembly (7 Spikes)		36.3
	6J-587	Spike Bar Assembly (5 Spikes)		25.3
9	6J-604	Clamp Bolt, 1/2"		.6
10	6J-601	Drag Link		.7
11	6J-600	Chain		1.8
12	6J-599	Chain		.9
13	6J-603	Channel		1.3
14	5C-461	Lock Nut, 5/8"		-
15	2C-404	Capscrew, 5/8 x 2-1/2" Long		.2
16	6C-421	Capscrew, 5/8 x 1-3/4" Long		.1
17	6J-608	Handle		2.4
18	6J-638	Clamp		1.5
19	4C-856	Hair Pin Cotter		-
20	6J-661	Capscrew, 1/2 x 2-1/2" Long (Special)		.2
21	3D-121	Capscrew, 1/2 x 5-1/2" Long		.3
22	5C-392	Lock Nut, 1/2"		-
23	6J-602	Chain Strap		.3
24	6J-610	Control Link		5.3
25	6J-612	10-1/2" Link		1.5
26	6J-609	Spacer		-
27	6J-614	Control Arm		5.5
28	8C-523	Clevis Pin		.1
29	1C-267	Capscrew, 1/2 x 1-1/2" Long		.1
30	4J-916	Capscrew, 7/16 x 1-1/2" Long		.1
31	1C-179	Nut, 7/16"		-
	1C-314	Lockwasher, 7/16"		-
32	2C-400	Capscrew, 5/8 x 2" Long		.2
33	1D-522	Capscrew, 5/8 x 2-1/4" Long		.2

6J204
Spike tooth

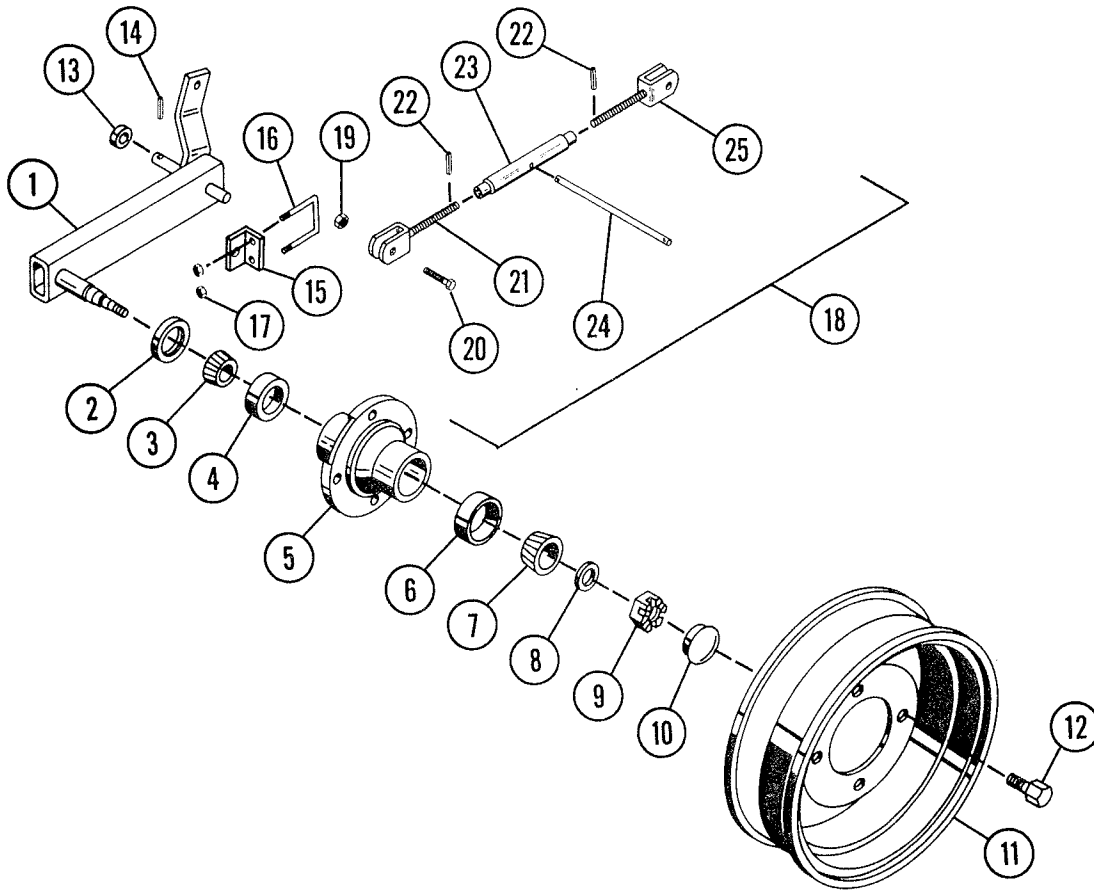


ROLLING HARROWS				
Index No.	Part No.	Description	No. Used	Weight
1	6J-891	Basket Bracket		48.5
2	5C-907	Flat Washer, 5/8" S.A.E.		-
3	8D-84	Capscrew, 5/8 x 4-1/2" Lg., Grade 5		.4
4	1C-109	Lockwasher, 1/2" Std.		-
5	1C-390	Nut, 1/2" Hex		-
6	4J-919	Clevis Pin, 5/8 x 4-3/4" Long		.4
7	4C-856	Hairpin Cotter		-
8	4D-373	Capscrew, 5/8 x 5-1/2" Long		.5
9	5C-461	Lock Nut, 5/8" Hex		-
10	4J-904	Extension		37.0
11	4J-917	Capscrew, 5/8 x 2-1/4" Long (Special)		.2
12	8C-527	Capscrew, 1/2 x 1-1/2" Long, Grade 5		.1
13	4J-920	Spring Handle		2.6
14	4D-242	Extension Spring		1.3
15	6J-227	Extension Bracket		15.0
16	6J-226	Extension Tube		28.5
17	4J-411	U-Bolt, 5/8"		.9
18	5C-461	Lock Nut, 5/8" Hex		-
19	4J-912	Long Harrow Frame		42.0
20	4J-914	Long Harrow Reel		36.5
21	4J-581	Bearing, 1" (Includes Housing & Collar)		1.7
	5J-337	Bearing & Collar (Less Housing)		.5
22	4J-916	Capscrew, 7/16 x 1-1/2" Long, Grade 5		.1
23	1C-314	Lockwasher, 7/16" Std.		-
24	1C-179	Nut, 7/16" Hex		-
25	4J-913	Short Harrow Frame		34.0
26	4J-915	Short Harrow Reel		23.3
27	4J-985	Rock Shield (Optional)		.7
28	1B-166	Lockwasher, 5/8" Std.		-
29	1C-392	Nut, 5/8" Hex		-
		Note: Rolling Harrows May be Ordered Assembled In Frames As Follows:		
	4J-905	Long Harrow Assembly (Includes Items 19 Thru 24)		119.0
	4J-906	Short Harrow Assembly (Includes Items 21 Thru 26)		85.0



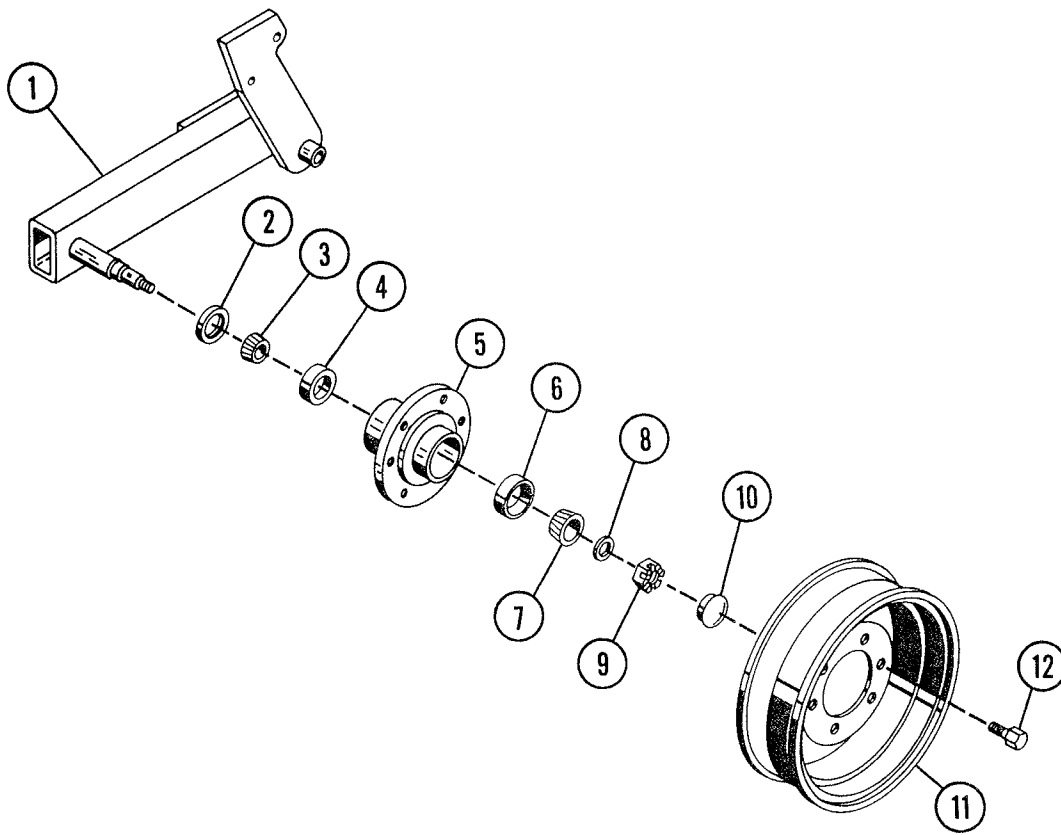
GAGE WHEEL ASSEMBLY (24' MACHINE)

Index No.	Part No.	Description	No. Used	Weight
Used On Machines After July 1, 1984				
1	7J-190	Wheel Arm, R.H. (Shown)	1	38.5
	7J-191	Wheel Arm, L.H. (Opposite)	1	38.5
2	5C-910	Seal	2	.1
3	5C-913	Bearing Cone #LM67048	2	.3
4	5C-914	Bearing Cup #LM67010	2	.3
5	5C-904	Wheel Hub	2	6.3
6	5C-912	Bearing Cup #LM11910	2	.2
7	5C-911	Bearing Cone #LM11949	2	.2
8	5C-907	Flat Washer	2	-
9	5C-909	Slotted Nut	2	.2
10	5C-908	Hub Cap	2	.7
11	5C-916	Wheel	2	16.0
12	5C-100	Wheel Bolt	8	.1
13	5C-548	Machinery Bushing, 1-1/4"	6	-
14	7J-463	Pin Assembly	2	3.0
15	4C-858	Roll Pin, 5/16 x 2" Long	2	-
16	7J-237	Ratchet Jack	1	15.0
17	8D-99	Clevis Pin	2	-
18	6C-468	Cotter Pin	2	-



GAGE WHEEL ASSEMBLY (24' MACHINES)

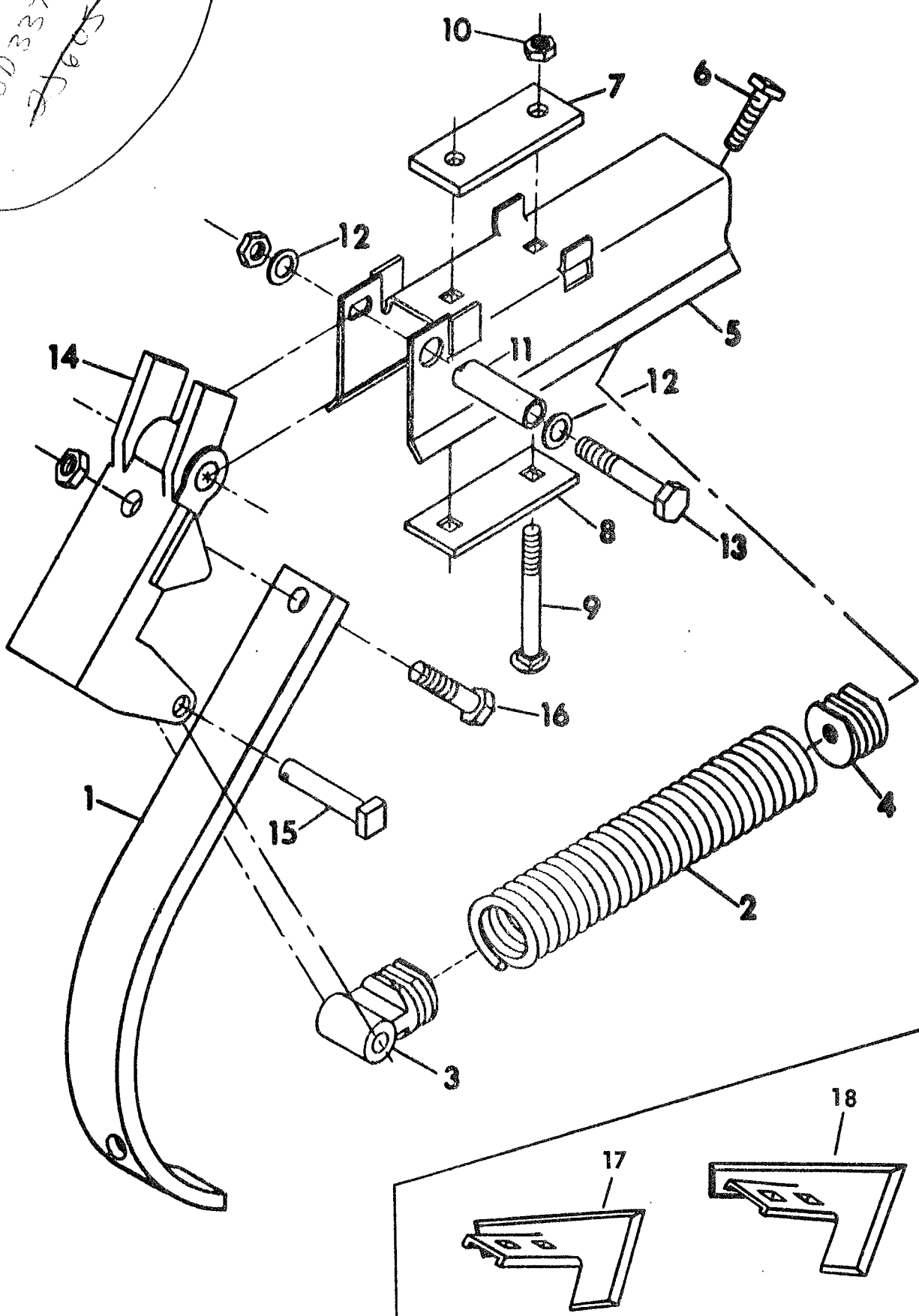
Index No.	Part No.	Description	No. Used	Weight
		Used Before July 1, 1984		
1	6J-929	Wheel Arm & Spindle L.H. (Shown)	1	26.0
	6J-930	Wheel Arm & Spindle R.H. (Opposite)	1	26.0
2	5C-910	Seal	2	.1
3	5C-913	Bearing Cone #LM67048	2	.3
4	5C-914	Bearing Cup #LM67010	2	.3
5	5C-904	Wheel Hub	2	6.3
6	5C-912	Bearing Cup #LM11910	2	.2
7	5C-911	Bearing Cone #LM11949	2	.2
8	5C-907	Flat Washer	2	-
9	5C-909	Slotted Nut	2	.2
10	5C-908	Hub Cap	2	.7
11	5C-916	Wheel	2	16.0
12	5C-100	Wheel Bolt	8	.1
13	4J-548	Machinery Bushing, 1-1/4"	6	-
14	2D-894	Roll Pin, 1/4 x 2" Long	2	-
15	6J-38	Angle	2	6.8
16	6J-595	U-Bolt, 5/8"	2	.9
17	1C-392	Nut, 5/8"	4	-
	1B-166	Lockwasher, 5/8"	4	-
18	8D-591	Turnbuckle- Complete	2	9.5
19	6C-729	Lock Nut, 3/4"	4	.1
20	3D-510	Capscrew, 3/4 x 2-1/2" Long	4	.4
21	8D-602	L.H. Screw Assembly	2	2.7
22	7C-870	Roll Pin, 3/16 x 1-1/8" Long	4	-
23	8D-597	Turnbuckle Body	2	3.1
24	8D-590	Handle	2	1.1
25	8D-601	R.H. Screw Assembly	2	2.7



GAGE WHEEL ASSEMBLY (27' & 30' MACHINES)

Index No.	Part No.	Description	No. Used	Weight
1	6J-927	Wheel Arm & Spindle R.H. (Shown)	1	72.0
	6J-928	Wheel Arm & Spindle L.H. (Opposite)	1	72.0
2	6D-338	Seal	2	.1
3	5C-480	Bearing Cone #IM48548	2	.2
4	5C-479	Bearing Cup #IM48510	2	.2
5	6D-336	Wheel Hub	2	10.5
6	5C-914	Bearing Cup #IM67010	2	.2
7	5C-913	Bearing Cone #IM67048	2	.2
8	1C-871	Flat Washer	2	-
9	6D-284	Slotted Nut	2	.1
10	6D-337	Hub Cap	2	.3
11	6D-312	Wheel	2	24.0
12	5C-100	Wheel Bolt	12	.1

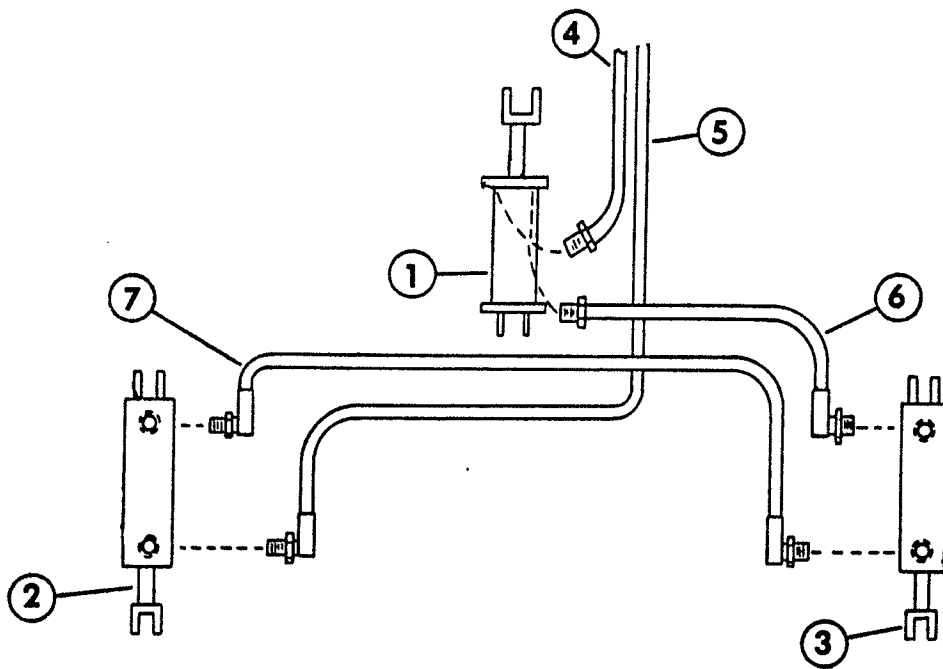
NOTE
80337-13/4
25605 part



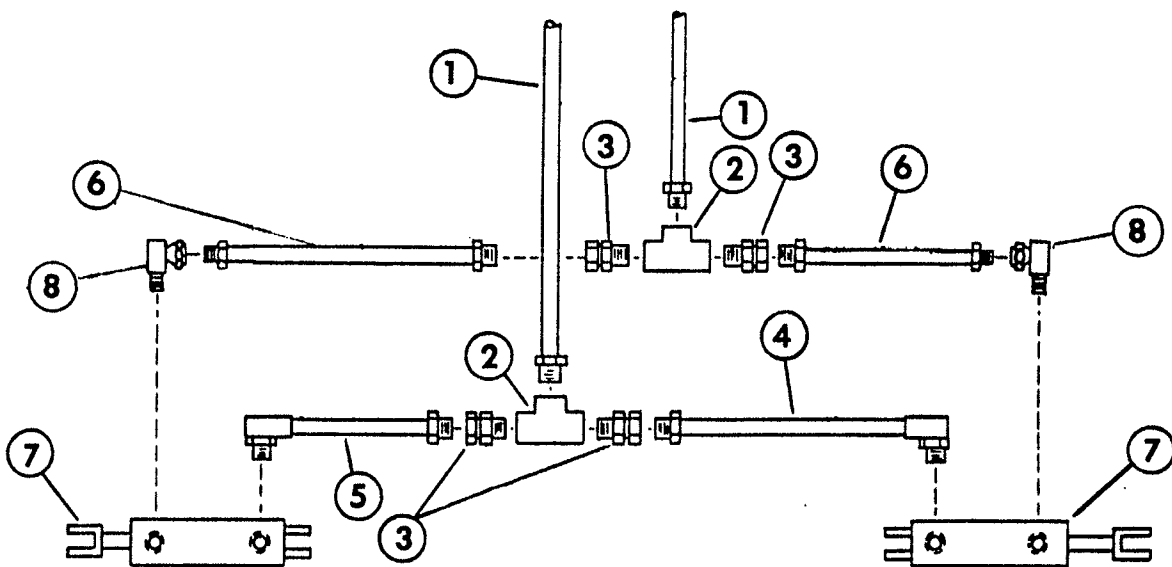
43525 → CULTIVATOR TOOTH ASSEMBLY

(No points)

Index No.	Part No.	Description	No. Used	Weight
1	2J-143	Cultivator Tooth	1	6.2
2	8D-219	Extension Spring	1	4.6
3	8D-220	Spring Plug	1	1.1
4	8D-221	Spring Plug	1	.5
5	4J-578	Spring Holder	1	4.3
6	8D-349	Bolt, 1/2 x 3-1/4" Long (Special)	1	.3
7	5J-358	Strap	1	1.0
8	4J-529	Strap	1	.4
9	4J-527	Carriage Bolt, 1/2 x 4-1/2" Long (Grade 5)	2	.3
10	5C-392	Lock Nut, 1/2" Hex	4	-
11	9D-19	Bushing	1	.4
12	9C-134	Flat Washer, 1/2" S.A.E.	2	-
13	5D-871	Capscrew, 1/2 x 3-1/2" Long (Grade 5)	1	.3
14	8D-223	Tooth Clamp	1	6.8
15	8D-302	Pin, 1/2 Dia. x 3" Long, Sq. Hd.	1	.3
	2C-864	Cotter Pin, 1/8 Dia. x 1" Long	1	-
16	1D-237	Capscrew, 1/2 x 2" Long (Grade 5)	2	.2
17	4J-808	7" Full Sweep (Optional)	1	1.4
18	6J-369	10" Full Sweep (Optional)	1	1.6
	8D-301	Plow Bolt, 7/16 x 1-1/2" Long, #3 Head	2	.1
	1C-314	Lockwasher, 7/16" Std.	2	-
	1C-179	Nut, 7/16" Hex	2	-

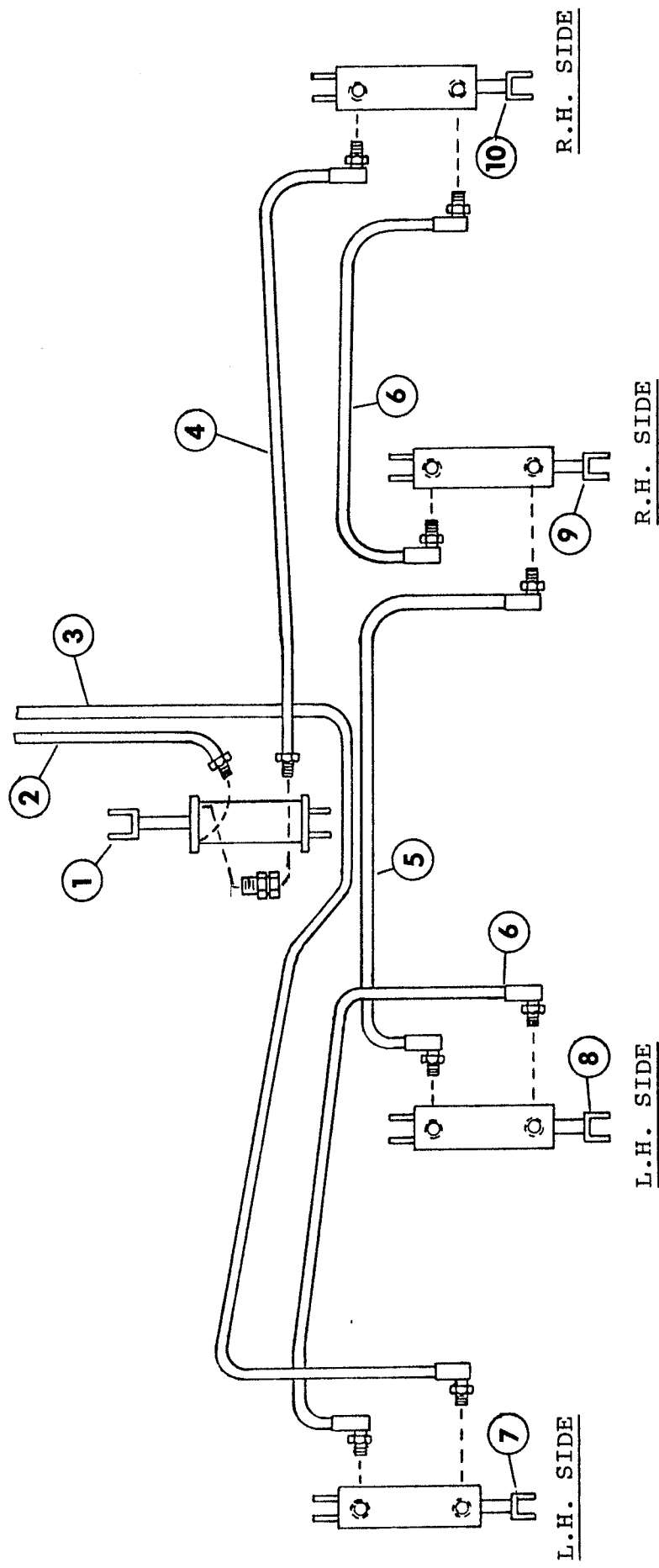


FOR DEPTH CONTROL



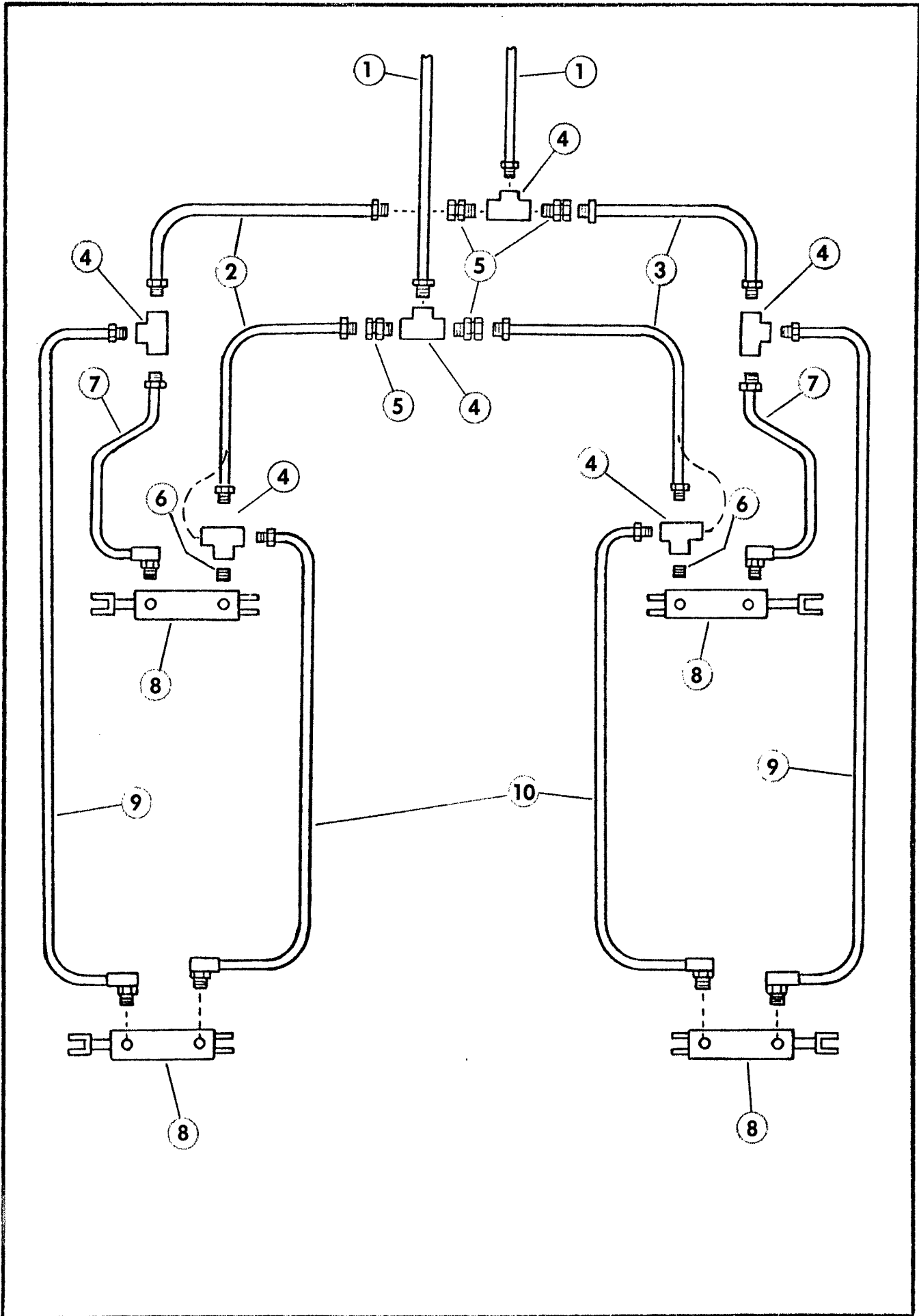
FOR WING FOLD

"DEPTH CONTROL" HYDRAULICS (24' MACHINES)				
Index No.	Part No.	Description	No. Used	Weight
1	8J-874	Hydraulic Cylinder (replaces 4J-658)	1	70.0
2	8J-808	Hydraulic Cylinder (replaces 4J-660)	1	50.0
3	8J-875	Hydraulic Cylinder (replaces 4J-659)	1	61.0
4	6D-725	Hydraulic Hose, 180"	1	6.9
5	8D-158	Hydraulic Hose, 252"	1	9.8
6	9D-764	Hydraulic Hose, 96"	1	4.0
7	6J-344	Hydraulic Hose, 140"	1	5.5
"WING FOLD" HYDRAULICS (24' MACHINES)				
1	6J-725	Hydraulic Hose, 180"	2	6.9
2	4D-982	Tee Fitting, 1/2" N.P.T.	2	.3
3	6D-716	Flow Restrictor, 1/16" Orifice	4	.3
4	2D-449	Hydraulic Hose, 62"	1	2.8
5	2J-527	Hydraulic Hose, 54"	1	2.6
6	6J-437	Hydraulic Hose, 84"	2	3.3
7	9D-524	Hydraulic Cylinder	2	33.0
8	1J-131	90° Swivel Fitting	2	.3



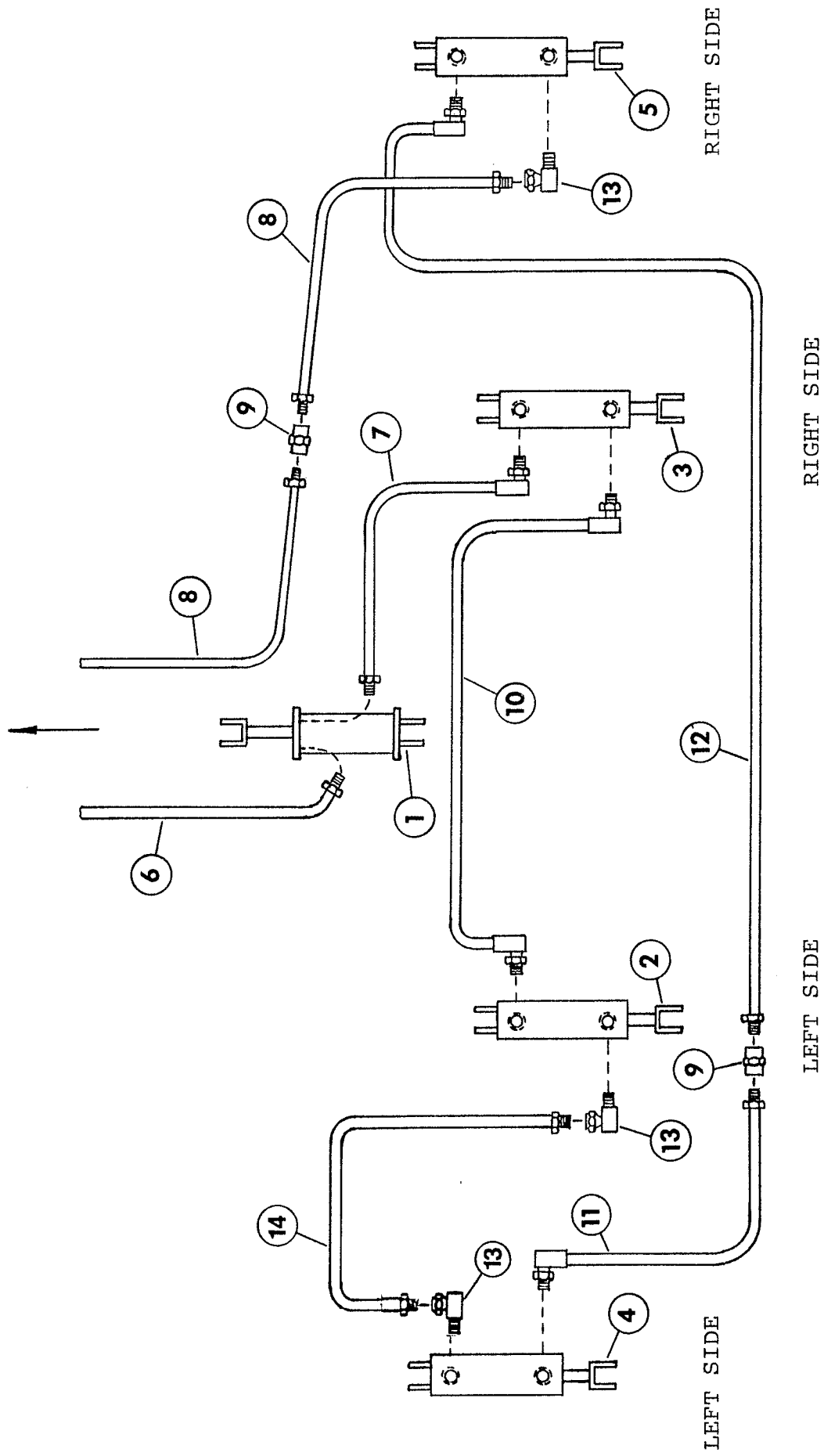
"DEPTH CONTROL" HYDRAULICS (27' & 30' MACHINES)

Index No.	Part No.	Description	No. Used	Weight
1	8J-874	Hydraulic Cylinder (replaces 4J-658)	1	70.0
2	6D-725	Hydraulic Hose, 180"	1	6.9
3	6J-436	Hydraulic Hose, 396"	1	15.4
4	8D-158	Hydraulic Hose, 252"	1	9.8
5	6J-344	Hydraulic Hose, 140"	1	5.5
6	6J-434	Hydraulic Hose, 160"	2	6.3
7	8J-783	Hydraulic Cylinder (replaces 6J-012)	1	43.0
8	8J-784	Hydraulic Cylinder (replaces 4J-661)	1	42.0
9	8J-808	Hydraulic Cylinder (replaces 4J-660)	1	50.0
10	8J-875	Hydraulic Cylinder (replaces 4J-659)	1	61.0
11	9J-212	Swivel Adapter	1	0.3



"WING FOLD" HYDRAULICS (27' & 30' MACHINES)

Index No.	Part No.	Description	No. Used	Weight
1	6D-725	Hydraulic Hose, 180"	2	6.9
2	4D-981	Hydraulic Hose, 56"	2	2.6
3	6J-437	Hydraulic Hose, 84"	2	3.3
4	4D-982	Tee Fitting, 1/2" N.P.T.	6	.3
5	6D-716	Flow Restrictor, 1/16" Orifice	4	.3
6	6D-148	Close Nipple, 1/2" N.P.T.	2	.1
7	2J-528	Hydraulic Hose, 18"	2	1.1
8	9D-524	Hydraulic Cylinder	4	33.0
9	4J-829	Hydraulic Hose, 116"	2	4.6
10	9D-764	Hydraulic Hose, 96"	2	4.0



"DEPTH CONTROL WITH WING GAGE WHEEL" HYDRAULICS (24' MACHINES)

Index No.	Part No.	Description	No. Used	Weight
1	8J-874	Hydraulic Cylinder (replaces 4J-658)	1	70.0
2	8J-808	Hydraulic Cylinder (replaces 4J-660)	1	50.0
3	8J-875	Hydraulic Cylinder (replaces 4J-659)	1	61.0
4	8J-784	Hydraulic Cylinder (replaces 4J-661)	1	42.0
5	8J-783	Hydraulic Cylinder (replaces 6J-012)	1	43.0
6	6D-725	Hydraulic Hose, 180"	1	6.9
7	9D-764	Hydraulic Hose, 96"	2	4.0
8	3J-547	Hydraulic Hose, 160"	2	6.2
9	4J-553	Pipe Coupling	2	.3
10	6J-344	Hydraulic Hose, 140"	1	5.5
11	2J-863	Hydraulic Hose, 38"	1	1.9
12	8D-158	Hydraulic Hose, 252"	1	9.8
13	1J-131	90 Swivel Fitting	2	.3
14	4D-980	Hydraulic Hose, 66"	1	2.5

CYLINDER IDENTIFICATION

1. Determine style of cylinder. Welded construction or tie rod construction. Tie rod construction has four long bolts running the length of the cylinder to hold the cylinder together. Welded construction has base welded to the tube.
2. Determine size of cylinder - completely retract cylinder measure distance from center of one attaching pin to other attaching pin. Measure outside diameter of tube and subtract $3/8''$ or $1/2''$ to get even dimension. The cylinder diameter is in even sizes - $3''$, $3-1/2''$, $4''$. So a tube that measures $3-7/8''$ O.D. is a $3-1/2''$ cylinder. Series cylinders are an exception, and are usually sized in $1/4''$ increments such as $5''$, $4-3/4''$, $4-1/2''$, etc.
3. Measure rod size.
4. Look in index of this book to find machine used and location of cylinder on machine. Turn to the particular cylinder and find cylinder type. Check cylinder size, retracted length and rod size. When all these items check, the cylinder is identified.

Study cylinder construction, these drawings reflect as accurately as possible the actual construction of the cylinder.

HYDRAULIC CYLINDER USAGE INDEX

		<u>Page No.</u>
6D-138	Wing Raising on STS & STR Harrows - - - - -	3
6D-724	Wing Raising on HSD-360 Harrow	
	Machine Raising WP-108, WPW-128 Pulverizer - - - - -	4
9D-137	Folding Toolbar BRSF & BSFF Ro-Crop Cultivator	
	Folding Toolbar BRCF-6402, BRCF-8302, BRCF-8402	
	Wing Raising on Soil Builder (15 & 17 Shank)	
	Folding Toolbar BCFF Ro-Crop Cultivator	
	Machine Raising X-108 Pulverizer - - - - -	5
9D-282	Hitch Cylinder WM-2601 & 3001, WM-2602 & 3002	
	Machine Raising Kit on SST-961, SST-1201 & SSLFT-120-	6
9D-327	Folding Toolbar BRSF-12302 Ro-Crop Cultivator - - - -	7
9D-524	Wing Raising WM-2601	
	Machine Raising WM-2601 Beginning 8/1/76, WM-3002	
	Machine Raising on ML Mulcher	
	Wing Raising WP-108, WPW-128 Pulverizer	
	Machine Raising XL-144 Pulverizers	
	Wing Raising (SG-24 to SG-30) Soil Groomer - - - - -	8 - 9
9D-731	Wing Raising WM-3001, WM-3002 Mulcher	
	Machine Raising WM-3001, Beginning 8/1/76, WM-3002	
	Machine Raising WM-360 - - - - -	10
9D-762	SST-144 Seeder - - - - -	11
2J-674	Machine Raising on Soil Builder (5-11 Shank) - - - -	12 - 13
3J-567	Hitch Cylinder WM-360 - - - - -	14
3J-568	Wing Raising WM-360 - - - - -	15
3J-603	Tooth Depth Control WM-360 - - - - -	16
	Machine Raising on Flail Shredder	
3J-815	Machine Raising on FCF Field Cultivator - - - - -	17 - 18
3J-816	Machine Raising on FCF Field Cultivator - - - - -	19 - 20
3J-817	Machine Raising on FCF Field Cultivator - - - - -	21 - 22
3J-818	Wing Raising on FCF Field Cultivator - - - - -	23
4J-657	Wing Raising on Cultivator-Incorporator - - - - -	24
4J-658	Machine Raising on Cultivator-Incorporator	
	Machine Raising on (SG-24 to SG-30) Soil Groomer - -	25
4J-659	Machine Raising on Cultivator-Incorporator	
	Machine Raising on (SG-24 to SG-30) Soil Groomer- - -	26
4J-660	Machine Raising on Cultivator-Incorporator	
	Machine Raising on (SG-24 to SG-30) Soil Groomer- - -	27
4J-661	Machine Raising on Cultivator-Incorporator	
	Machine Raising on (SG-12 to SG-30 & SGH-24) Soil Groomer (Except SG-24) - - - - -	28
5J-128	Machine Raising on Soil Builder (13, 15 & 17 Shank) -	29
5J-280	Machine Raising on TPW Pulverizers - - - - -	30 - 31
	Hydraulic Coulter Depth Control Option for Soil Builder (7-11 Shank)	
5J-830	Wing Raising on (XLW-120 & XLW-144) Pulverizer - - -	32
5J-835	Same as 9D-524 BIW with Side Ports	
	Folding Tool Bar BCFF-1230 Ro-Crop Cultivator	
	Wing Raising WM-2602 Mulcher	
	Wing Raising (SG-18 to SG-21) Soil Groomer - - - - -	8 - 9
6J-11	Machine Raising on (SG-12 to SG-21) Soil Groomer- - -	33
6J-12	Machine Raising on (SG-12 to SG-30 & SGH-24) Soil Groomer	34
6J-216	Wing Raising on (XLW-84 to XLW-108) Pulverizer - - -	35
6J-811	Wing Raising on (XW-84 to XW-108) Pulverizer Wings- -	36
6J-812	Wing Raising on (XW-60 & XW-72) Pulverizer Wings - -	37

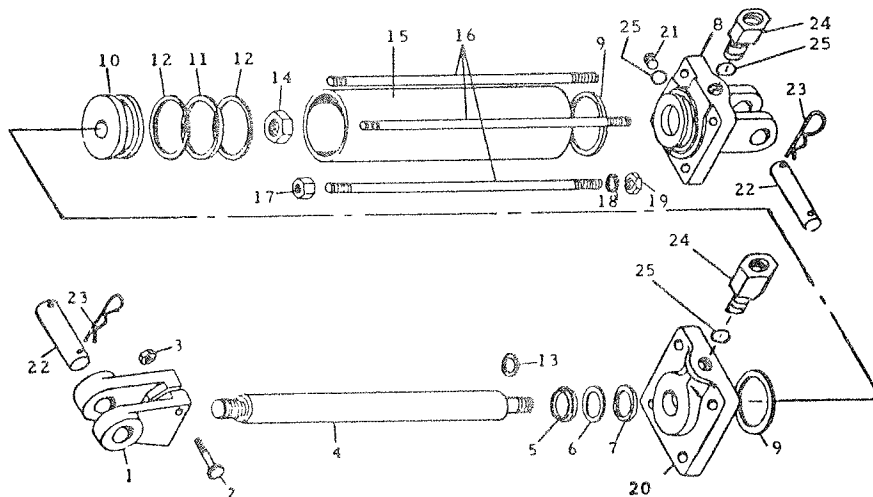
HYDRAULIC CYLINDER USAGE INDEX
(continued)

		<u>Page No.</u>
7J-194	Machine Raising on (SGH-18 & SGH-21) Soil Groomer	- - - 38
7J-195	Machine Raising on (SGH-18 & SGH-21) Soil Groomer	- - - 39
7J-680	Machine Raising on Extended Frame Soil Builders	- - 40-40A
8J-782	Machine Raising on (SG-121 to SG-211) Soil Groomers, after 1-25-88	- - - - - 41
8J-783	Machine Raising on (SG-121 to SG-301 & SGH-241) Soil Groomers, after 1-25-88	- - - - - 42
8J-784	Machine Raising on (SG-121 to SG-301 & SGH-241, except SG-241) Soil Groomers, after 1-25-88.	- - - - - 43
8J-808	Machine Raising, Cultivator-Incorporator after 1-25-88.	
8J-808	Machine Raising on (SG-241 to SG-301) Soil Groomers, after 05/26/88.	- - 44
8J-874	Machine Raising on (SG-241 to SG-301) Soil Groomers, after 05/26/88.	- - 45
8J-875	Machine Raising on (SG-241 to SG-301) Soil Groomers, after 05/26/88.	- - 46

<u>Code Letter</u>	<u>Manufacturer</u>
BIW	Brillion Iron Works
G	Hydraulic Gear
L	Lantex
P	Prince

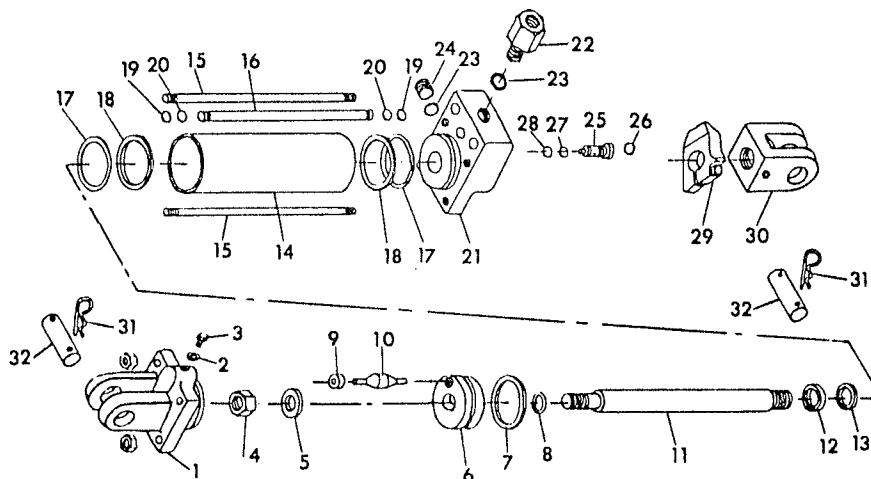
9D-524 BIW Hydraulic Cylinder 3-1/2 x 16
 Painted Green
 1-3/8 Rod Dia., 26-1/4 Retracted, 42-1/4 Extended Length
5J-835 - Same except assembled with side ports.

Item	Part No.	Description	Qty.
1	5J-195	Rod End Clevis	1
2	9D-797	Capscrew 5/16-18 NC x 2-1/4 Long	1
3	1C-385	Hex Nut 5/16-18 NC	1
4	5J-236	Rod	1
*5	5J-233	Rod Wiper	1
*6	5J-229	Back-Up Washer	1
*7	5J-228	"O" Ring Rod Packing	1
8	7J-29	Base (With Ports Requiring "O" Ring Fittings)	1
	5J-197	Base (Part No. on Casting With Pipe Thread) When this number is ordered you will receive (1) 7J-29, (2) 7J-24, (1) 7J-25 and (1) 7J-26	1
*9	5J-230	"O" Ring	2
10	5J-196	Piston	1
*11	5J-231	"O" Ring - Piston	1
*12	5J-232	Back-Up Washer	2
*13	5J-227	"O" Ring	1
14	6D-918	Piston Nut 3/4-16 NF Stover	1
15	5J-235	Tube	1
16	5J-226	Tie Rod	4
17	5C-392	Nut 1/2-13 NC Stover	4
18	1C-109	Lockwasher 1/2	4
19	1C-390	Hex Nut 1/2-13 NC	4
20	7J-28	Gland (With Port Requiring "O" Ring Fitting)	1
	5J-198	Gland (Part No. on Casting With Pipe Thread) When this number is ordered you will receive (1) 7J-28, (1) 7J-24 and (1) 7J-26	1
21	7J-25	Plug, "O" Ring Type (Without "O" Ring)	1
	5J-234	Plug, Pipe Thread (Used Prior to 8/83)	1
22	5J-650	Clevis Pin	2
23	1D-594	Hairpin Cotter	4
24	7J-26	Adaptor (Without "O" Ring)	2
25	7J-24	"O" Ring (Not a Part of 7J-25 & 7J-26)	3
*	5J-844	Seal Kit (Items Marked "**")	1



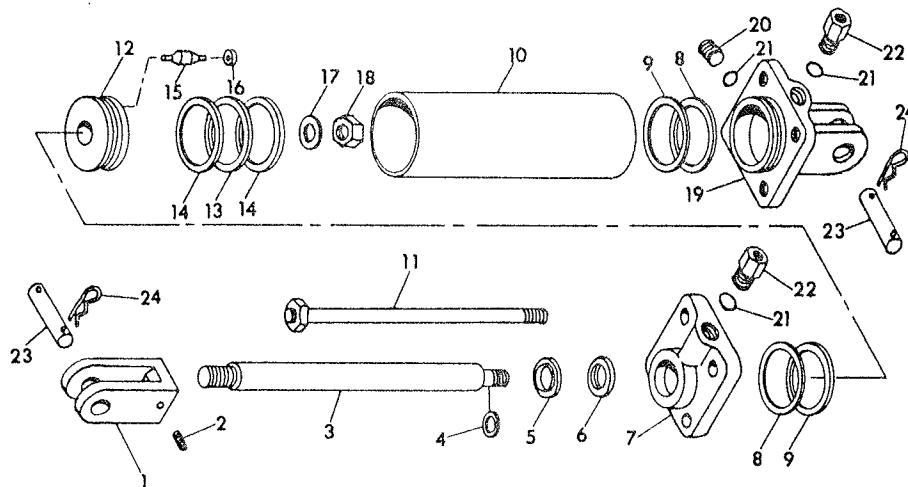
4J-658 P Hydraulic Cylinder 5 x 8
 Prince #W-85 Painted Green
 1-1/2" Rod Dia., 20-1/4" Retracted, 28-1/4" Extended

Item	Part No.	Description	Qty.
1	5J-145	Butt (base)	1
2	3J-728	Nyltite Seal	1
3	3J-730	Capscrew	1
4	9C-223	Locknut 1"-14	1
5	5J-152	Steel Washer	1
6	5J-144	Piston	1
*7	NSS	Urethane Seal	1
*8	NSS	O-Ring	1
9	5J-153	Seat	1
10	5J-154	Poppet	1
11	5J-147	Piston Rod	1
*12	NSS	U-Cup	1
*13	NSS	Wiper	1
14	5J-148	Tube	1
15	5J-149	Tie Rod	4
16	3J-720	Manifold Tube	1
*17	NSS	Back Up Washer	2
*18	NSS	O-Ring	2
*19	NSS	O-Ring	2
*20	NSS	Back Up Washer	2
21	7J-60	Gland (With Ports Requiring O-Ring Fittings)	1
	5J-150	Gland (With Pipe Thread)	
		When this number is ordered you will receive (1) 7J-60, (1) 7J-24 and (1) 7J-26	
22	7J-26	Adaptor (Without O-Ring)	2
23	7J-24	O-Ring (Not a Part of 7J-25 & 7J-26)	3
24	7J-25	Steel Plug, O-Ring Type (Without O-Ring)	1
25	3J-724	Valve Assembly	1
*26	NSS	O-Ring	1
*27	NSS	O-Ring	1
*28	NSS	Back Up Washer	1
29	5J-151	Striker Plate (Includes 3/8 x 2-3/4 square head bolt, lock nut & Washer)	1
30	1J-72	Clevis Assembly	1
31	1D-594	Hairpin Cotter	4
32	7J-67	Clevis Pin	2
*	5J-146	PMCK-S-408 Seal Kit	
		NSS - Not Serviced Separately	



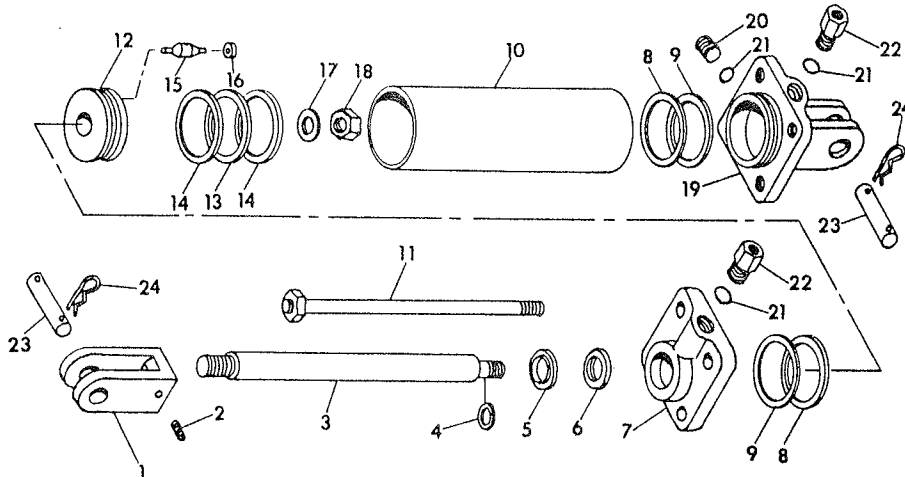
4J-659 P Hydraulic Cylinder 4-3/4 x 8
 Prince #W-88 Painted Green
 1-1/2" Rod Dia., 20-1/4" Retracted, 28-1/4" Extended

Item	Part No.	Description	Qty.
1	1J-72	Rod End Clevis	1
2	6J-345	Set Screw, 3/8-24 NC x 1/2	1
3	5J-156	Piston Rod	1
*4	NSS	O-Ring	1
*5	NSS	Rod Wiper	1
*6	NSS	U-Cup	1
7	7J-56	Gland (With Port Requiring O-Ring Fitting)	1
	5J-159	Gland (With Pipe Thread)	
		When this number is ordered you will receive (1) 7J-56, (1) 7J-24 and (1) 7J-26	
*8	NSS	Back Up Washer	2
*9	NSS	O-Ring	2
10	5J-157	Tube	1
11	5J-161	Tie Rod With Nut	4
12	5J-160	Piston	1
*13	NSS	O-Ring	1
*14	NSS	Back Up Washer	2
15	5J-154	Poppet	1
16	5J-153	Seat	1
17	5J-162	Steel Washer	1
18	9C-223	Locknut 1"-14 NF	1
19	7J-57	Base (With Ports Requiring O-Ring Fittings)	1
	5J-158	Base (With Pipe Thread)	
		When this number is ordered you will receive (1) 7J-57, (2) 7J-24, (1) 7J-25 and (1) 7J-26	
20	7J-25	Steel Plug, O-Ring Type (Without O-Ring)	1
	9C-853	Pipe Plug (Used Prior to 8/83)	
21	7J-24	O-Ring (Not a Part of 7J-25 & 7J-26)	3
22	7J-26	Adaptor (Without O-Ring)	2
23	7J-67	Clevis Pin 1" Dia. x 4" Long	2
24	1D-594	Hairpin Cotter	4
*	5J-155	PMCK-W-88 Seal Kit	
		NSS - Not Serviced Separately	



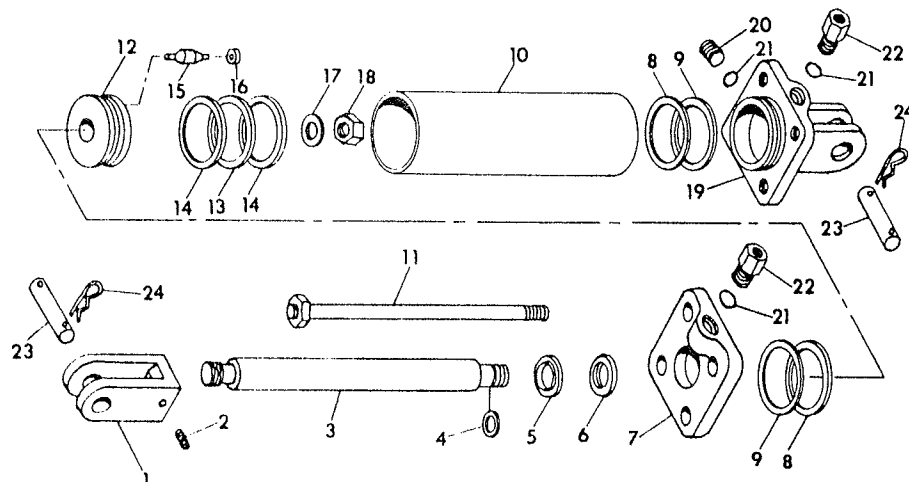
4J-660 P Hydraulic Cylinder 4-1/2 x 8
 Prince #W-87 Painted Green
 2" Rod Dia., 20-1/4" Retracted, 28-1/4" Extended

Item	Part No.	Description	Qty.
1	1J-72	Rod End Clevis	1
2	6J-345	Set Screw, 3/8-24 NF x 1/2	1
3	5J-164	Piston Rod	1
*4	NSS	O-Ring	1
*5	NSS	Rod Wiper	1
*6	NSS	U-Cup	1
7	7J-58	Gland (With Port Requiring O-Ring Fitting)	1
	5J-167	Gland (With Pipe Thread)	
		When this number is ordered you will receive (1) 7J-58, (1) 7J-24 and (1) 7J-26	
*8	NSS	O-Ring	2
*9	NSS	Back Up Washer	2
10	5J-165	Tube	1
11	5J-161	Tie Rod	4
12	5J-168	Piston	1
*13	NSS	O-Ring	1
*14	NSS	Back Up Washer	2
15	5J-154	Poppet	1
16	5J-153	Seat	1
17	5J-169	Steel Washer	1
18	1J-951	Lock Nut 1-1/4 - 12 NF	1
19	7J-59	Base (With Ports Requiring O-Ring Fittings)	1
	5J-166	Base (With Pipe Thread)	
		When this number is ordered you will receive (1) 7J-59, (2) 7J-24, (1) 7J-25 and (1) 7J-26	
20	7J-25	Steel Plug, O-Ring Type (Without O-Ring)	1
	9C-853	Pipe Plug (Used Prior to 8/83)	
21	7J-24	O-Ring (Not a Part of 7J-25 & 7J-26)	3
22	7J-26	Adaptor (Without O-Ring)	2
23	7J-67	Clevis Pin 1" Dia. x 4" Long	2
24	1D-594	Hairpin Cotter	4
*	5J-163	PMCK-P-1135 Seal Kit	
		NSS - Not Serviced Separately	



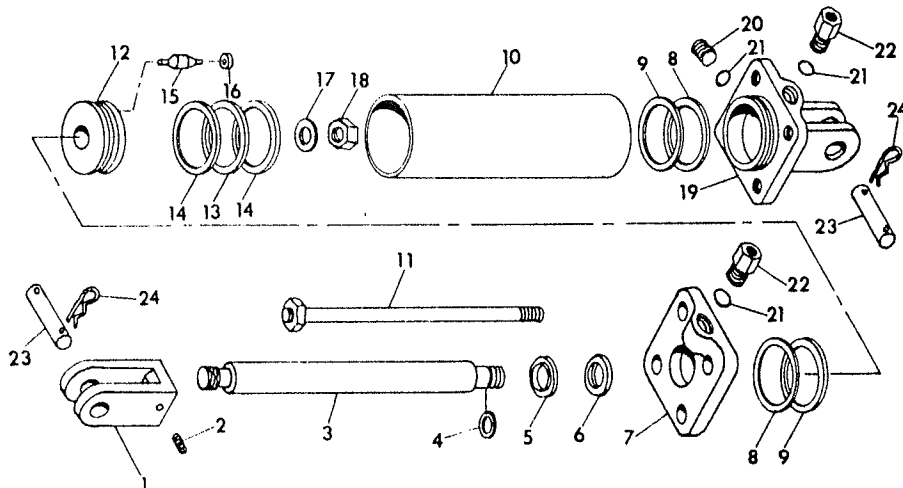
4J-661 P Hydraulic Cylinder 4 x 8
 Prince # W-86 Painted Green
 1-3/8" Rod Dia., 20-1/4" Retracted, 28-1/4" Extended

Item	Part No.	Description	Qty.
1	3J-723	Rod End Clevis	1
2	6J-345	Set Screw, 3/8-24 NF x 1/2	1
3	5J-172	Piston Rod	1
*4	NSS	O-Ring	1
*5	NSS	Rod Wiper	1
*6	NSS	U-Cup	1
7	7J-61	Gland (With Port Requiring O-Ring Fitting)	1
	5J-176	Gland (With Pipe Thread)	
		When this number is ordered you will receive (1) 7J-61, (1) 7J-24 and (1) 7J-26	
*8	NSS	O-Ring	2
*9	NSS	Back Up Washer	2
10	5J-173	Tube	1
11	5J-177	Tie Rod	4
12	5J-175	Piston	1
*13	NSS	O-Ring	1
*14	NSS	Back Up Washer	2
15	5J-154	Poppet	1
16	5J-153	Seat	1
17	5J-178	Steel Washer	1
18	6C-750	Locknut 7/8-14 NF	1
19	7J-53	Base (With Ports Requiring O-Ring Fittings)	1
	5J-174	Base (With Pipe Thread)	
		When this number is ordered you will receive (1) 7J-53, (2) 7J-24, (1) 7J-25 and (1) 7J-26	
20	7J-25	Steel Plug, O-Ring Type (Without O-Ring)	1
	9C-853	Pipe Plug (Used Prior to 8/83)	
21	7J-24	O-Ring (Not A Part of 7J-25 and 7J-26)	3
22	7J-26	Adaptor (Without O-Ring)	2
23	7J-67	Clevis Pin 1" Dia. x 4" Long	2
24	1D-594	Hairpin Cotter	4
*	5J-171	PMCK-S-1449 Seal Kit	
		NSS- Not Serviced Separately	



6J-12 P Hydraulic Cylinder 3-3/4 x 8
 Prince #AB-143 Painted Green
 1-3/8" Rod Dia., 20-1/4" Retracted, 28-1/4" Extended

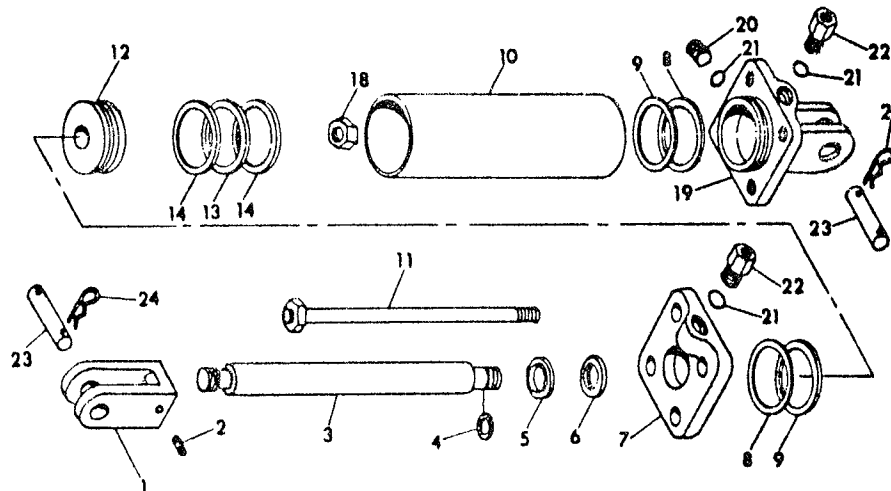
Item	Part No.	Description	Qty.
1	3J-723	Rod End Clevis	1
2	1C-737	Set Screw, 3/8-16 NC x 1/2	1
3	6J-913	Piston Rod	1
*4	NSS	O-Ring	1
*5	NSS	Rod Wiper	1
*6	NSS	U-Cup	1
7	7J-63	Gland (With Port Requiring O-Ring Fitting)	1
	6J-915	Gland (With Pipe Thread)	
		When this number is ordered you will receive (1) 7J-63, (1) 7J-24 and (1) 7J-26	
*8	NSS	Back Up Washer	2
*9	NSS	O-Ring	2
10	6J-914	Tube	1
11	5J-177	Tie Rod with Nut	4
12	6J-912	Piston	1
*13	NSS	O-Ring	1
*14	NSS	Back Up Washer	2
15	6J-918	Poppet	1
16	6J-917	Seat	1
17	6J-916	Steel Washer	1
18	6D-918	Locknut, 3/4-16 NF	1
19	7J-64	Base (With Ports Requiring O-Ring Fittings)	1
	6J-911	Base (With Pipe Thread)	
		When this number is ordered you will receive (1) 7J-64, (2) 7J-24, (1) 7J-25 and (1) 7J-26	
20	7J-25	Steel Plug, O-Ring Type (Without O-Ring)	1
	9C-853	Pipe Plug (Used Prior to 8/83)	
21	7J-24	O-Ring (Not a Part of 7J-25 & 7J-26)	3
22	7J-26	Adaptor (Without O-Ring)	2
23	7J-67	Clevis Pin 1" Dia. x 4" Long	2
24	1D-594	Hairpin Cotter	4
*	6J-919	PMCK-AB-143 Seal Kit	
		NSS - Not Serviced Separately	



8J-783 P Hydraulic Cylinder 3-3/4 x 8
 Prince #AH-208 Painted Green
 1-3/8" Rod Dia., 20-1/4" Retracted, 28-1/4" Extended

Item	Part No.	Description	Qty.
1	3J-723	Rod End Clevis	1
2	5D-667	Cap Screw, 3/8-16 NC x 2-1/2"	1
	5C-954	Stover Lock Nut, 3/8-16 NC	1
3	8J-857	Piston Rod	1
*4	NSS	O-Ring	1
*5	NSS	Rod Wiper	1
*6	NSS	U-Cup	1
7	7J-063	Gland	1
*8	NSS	Back Up Washer	2
*9	NSS	O-Ring	2
10	8J-858	Tube Assembly	1
11	8J-859	Tie Rod with Nut	4
12	8J-860	Piston	1
*13	NSS	O-Ring	1
*14	NSS	Back Up Washer	2
18	6C-750	Locknut, 7/8-14 N.F.	1
19	7J-064	Base	1
20	7J-25	Steel Plug, O-Ring Type (Without O-Ring)	1
21	7J-24	O-Ring (Not a Part of 7J-25 & 7J-26)	3
22	7J-26	Adaptor (Without O-Ring)	2
23	7J-67	Clevis Pin 1" Dia. x 4" Long	2
24	1D-594	Hairpin Cotter	4
*	8J-861	PMCK-AH-208 Seal Kit	

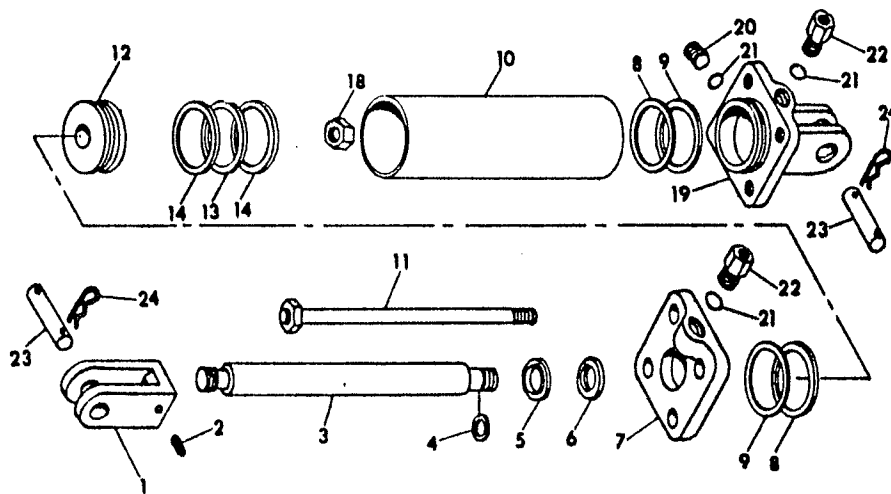
NSS - Not Serviced Separately



8J-784 P Hydraulic Cylinder 4 x 8
 Prince # AH-207 Painted Green
 1-3/8" Rod Dia., 20-1/4" Retracted, 28-1/4" Extended

Item	Part No.	Description	Qty.
1	3J-723	Rod End Clevis	1
2	5D-667	Cap Screw, 3/8-16 NC x 2-1/2"	1
	5C-954	Stover Lock Nut, 3/8-16 NC	1
3	5J-172	Piston Rod	1
*4	NSS	O-Ring	1
*5	NSS	Rod Wiper	1
*6	NSS	U-Cup	1
7	7J-61	Gland	1
*8	NSS	O-Ring	2
*9	NSS	Back Up Washer	2
10	8J-867	Tube Assembly	1
11	8J-859	Tie Rod	4
12	8J-868	Piston	1
*13	NSS	O-Ring	1
*14	NSS	Back Up Washer	2
18	6C-750	Locknut 7/8-14 NF	1
19	7J-53	Base	1
20	7J-25	Steel Plug, O-Ring Type (Without O-Ring)	1
21	7J-24	O-Ring (Not A Part of 7J-25 and 7J-26)	3
22	7J-26	Adaptor (Without O-Ring)	2
23	7J-67	Clevis Pin 1" Dia. x 4" Long	2
24	1D-594	Hairpin Cotter	4
*	8J-869	PMCK-AH-207 Seal Kit	

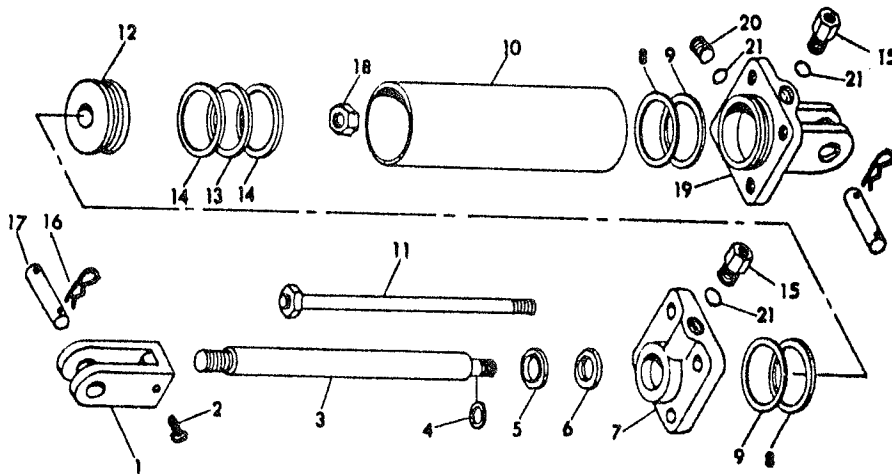
NSS- Not Serviced Separately



8J-808P HYDRAULIC CYLINDER 4-1/2 x 8
 PRINCE #AH-859 PAINTED GREEN
 2" ROD DIA., 20-1/4" RETRACTED, 28-1/4" EXTENDED

<u>Item</u>	<u>Part No.</u>	<u>Description</u>	<u>Qty.</u>
1	1J-072	Rod End Clevis	1
2	5D-667	Capscrew, 3/8-16 x 2-1/2"	1
	5C-954	Stover Lock Nut, 3/8-16	1
3	5J-164	Piston Rod	1
*4	NSS	O-Ring	1
*5	NSS	Rod Wiper	1
*6	NSS	U-Cup	1
7	9J-242	Gland	1
*8	NSS	O-Ring	2
*9	NSS	Back Up Washer	2
10	8J-870	Tube Assembly	1
11	6J-289	Tie Rod	4
12	8J-871	Piston	1
*13	NSS	O-Ring	1
*14	NSS	Back Up Washer	2
15	7J-026	Adaptor (without O-Ring)	2
16	5D-155	Clevis Pin, 1" x 4"	2
17	5D-110	Hairpin Cotter	4
18	1J-951	Lock Nut, 1-1/4-12	1
19	7J-059	Base	1
20	7J-025	Steel Plug (O-Ring type)	1
21	7J-024	O-Ring	1
*	8J-872	PMCK-AH-859	

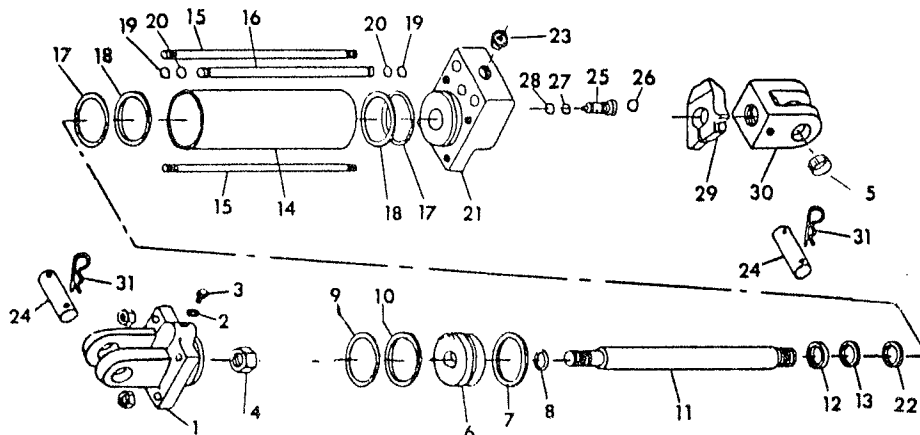
NSS - Not Serviced Separately



8J-874P HYDRAULIC CYLINDER 5 x 8
 PRINCE #AH-385 PAINTED GREEN
 1-1/2" ROD DIA., 20-1/4" RETRACTED, 28-1/4" EXTENDED

<u>Item</u>	<u>Part No.</u>	<u>Description</u>	<u>Qty.</u>
1	8J-949	Butt (Base)	1
2	3J-728	Nyltite Seal	1
3	3J-730	Capscrew	1
4	9C-223	Locknut, 1" - 14	1
5	8J-918	Tension Bushing	2
6	8J-946	Piston	1
*7	NSS	Teflon Seal	1
*8	NSS	O-Ring	1
*9	NSS	Wear Ring	1
*10	NSS	O-Ring	1
11	8J-947	Piston Rod	1
*12	NSS	O-Ring	1
*13	NSS	B/U Washer	1
14	8J-950	Tube Assembly	1
15	8J-951	Tie Rod w/Hex Nut	4
16	3J-720	Manifold Tube	1
*17	NSS	O-Ring	2
*18	NSS	B/U Washer	2
*19	NSS	O-Ring	2
*20	NSS	B/U Washer	2
21	8J-952	Gland	1
*22	NSS	Wiper	1
23	5J-234	Plug	3
24	7J-067	Clevis Pin	2
25	3J-724	Valve Assembly	1
*26	NSS	O-Ring	1
*27	NSS	O-Ring	1
*28	NSS	B/U Washer	1
29	5J-151	Striker Plate (incl. 3/8" x 2-3/4" Sq. Hd. bolt, locknut, washer)	1
30	8J-953	Clevis Assembly	1
31	1D-594	Hair Pin Cotter	2
*	8J-954	PMCK-AH-385 Seal Kit	

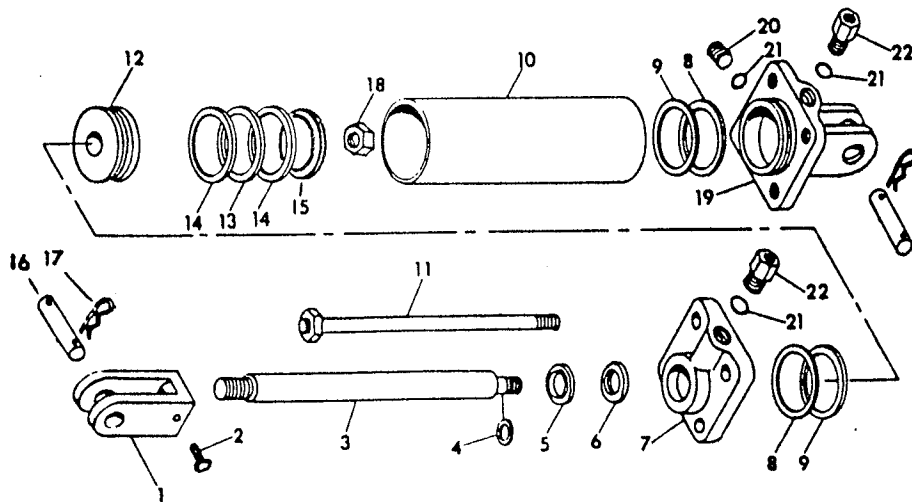
NSS - Not Serviced Separately



8J-875P HYDRAULIC CYLINDER 4-3/4 x 8
 PRINCE #AH-858 PAINTED GREEN
 1-1/2" ROD DIA., 20-1/4" RETRACTED, 28-1/4" EXTENDED

<u>Item</u>	<u>Part No.</u>	<u>Description</u>	<u>Qty.</u>
1	1J-072	Rod End Clevis	1
2	5D-667	Capscrew, 3/8-16 x 2-1/2"	1
	5C-954	Stover Lock Nut, 3/8-16	1
3	5J-156	Piston Rod	1
*4	NSS	O-Ring	1
*5	NSS	Rod Wiper	1
*6	NSS	U-Cup	1
7	7J-056	Gland	1
*8	NSS	Back Up Washer	2
*9	NSS	O-Ring	2
10	9J-239	Tube Assembly	1
11	6J-289	Tie Rod, with Nut	4
12	9J-240	Piston	1
*13	NSS	O-Ring	1
*14	NSS	Bearing Rind	2
*15	NSS	Teflon Seal	1
16	7J-067	Clevis Pin, 1" x 4"	2
17	1D-594	Hairpin Cotter	4
18	9C-223	Lock Nut, 1"-14	1
19	7J-057	Base	1
20	7J-025	Steel Plug (O-Ring Type)	1
21	7J-024	O-Ring	3
22	7J-026	Adaptor	2
*	9J-241	PMCK-AH-858	

NSS - Not Serviced Separately



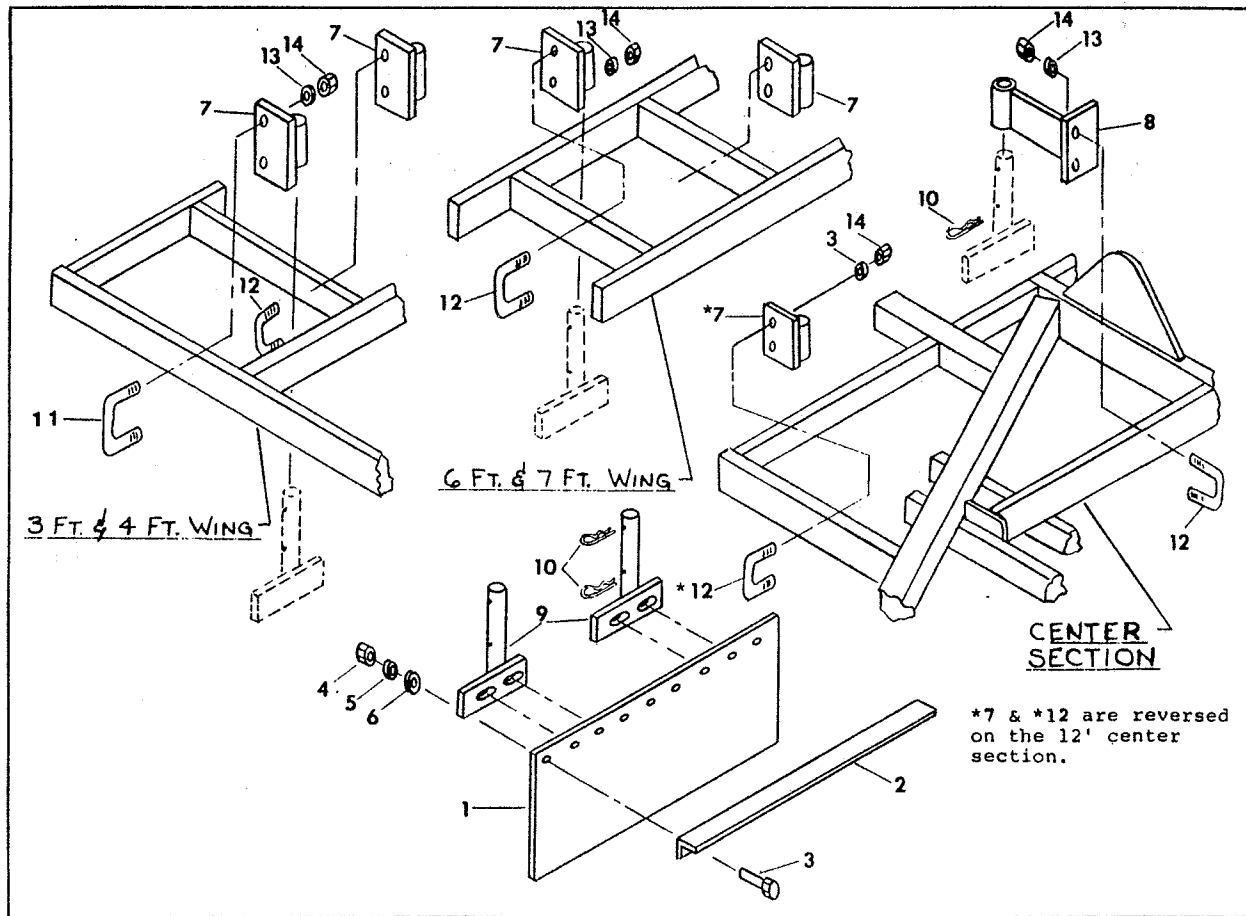
INSTRUCTIONS FOR 6J-478, 6J-479, 6J-480, 6J-481, 6J-482,
6J-483, 6J-484 DEFLECTOR SHIELD KITS USED ON BRILLION
SOIL GROOMERS

NOTE: READ INSTRUCTIONS COMPLETELY BEFORE INSTALLING

1. Attach pipe brackets (7) and shield brackets (8) to the soil groomer center section using U-Bolts (12), Lockwashers (13), and Nuts (14). Do not tighten hardware. See Fig.1 on back side of instruction sheet.
- 2*. Attach pipe brackets (7) to soil groomer wings using U-Bolts (11) & (12), Lockwashers (13), and Nuts (14). Do not tighten hardware.
3. Slide hanger assembly (9) into the shield and pipe brackets and secure with hairpin clip (10) above and below tube on mounting bracket.
4. Attach rubber shield (1) and shield support (2) to hanger assembly using Bolts (3), Nuts (4), Lockwashers (5) and Flatwashers (6).
Note: Deflector shield should be approximately 6" to 8" behind the disk gang assemblies and also 2 inches outside the soil groomer frame. The deflector shield can be adjusted vertically. Adjust deflector shield according to selected working depth.
5. Tighten all hardware.

* For 18Ft., 21 Ft., 24 Ft., 27 Ft., and 30 Ft. Soil Groomers Only

REPAIR PARTS LISTING			No. REQUIRED							WT
SYM	PART No.	DESCRIPTION	SG 12	SG 15	SG 18	SG 21	SG 24	SG 27	SG 30	
1	6J-472	Rubber Shield 34" Long			2					
	6J-473	Rubber Shield 52" Long				2	2			
	6J-474	Rubber Shield 72" Long	2		2	2		2		
	6J-475	Rubber Shield 90" Long		2			2	2	4	
2	6J-468	Shield Support 34" Long			2					7.8
	6J-469	Shield Support 52" Long				2	2			12
	6J-470	Shield Support 72" Long	2		2	2		2		16.6
	6J-471	Shield Support 90" Long		2			2	2	4	20.7
3	4D-904	Capscrew, 3/8"NC x 1-1/2 Long	22	28	36	40	46	50	54	.05
4	1C-277	Nut, 3/8"-16NC Hex	22	28	36	40	46	50	54	.01
5	1C-183	Lockwasher, 3/8" Medium	22	28	36	40	46	50	54	.01
6	1C-182	Flatwasher, 3/8" Standard	22	28	36	40	46	50	54	.01
7	6J-465	Pipe Bracket	2	2	6	6	6	6	6	3.75
8	6J-477	Shield Bracket	2	2	2	2	2	2	2	6.3
9	6J-462	Hanger Assembly	4	4	8	8	8	8	8	1.8
10	1D-594	Hairpin Clip	8	8	16	16	16	16	16	.01
11	5J-913	U-Bolt			2	2	2			.8
12	5J-914	U-Bolt	4	4	6	6	6	8	8	.95
13	1B-166	Lockwasher, 5/8" Medium	8	8	16	16	16	16	16	.01
14	1C-392	Nut, 3/8"-11NC Hex	8	8	16	16	16	16	16	.02
15	7D-040	Machine Bolt					4	4	4	
16	8J-056	Clamp Bar					2	2	2	



Above illustration covers assembly to all units except the center frames of the later model 24', 27' and 30' machines with disks throwing inward. That is illustrated below.

