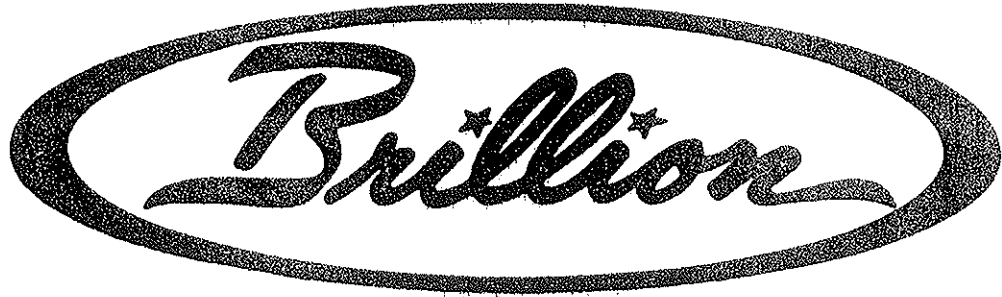


REPAIR PARTS CATALOG



RO-CROP CULTIVATOR

MODELS BRS-4402 THRU BRS-12222
MODELS BRSF-6402 THRU BRSF-12302
MODELS BRSH-4402 AND BRSH-6302

IMPORTANT!

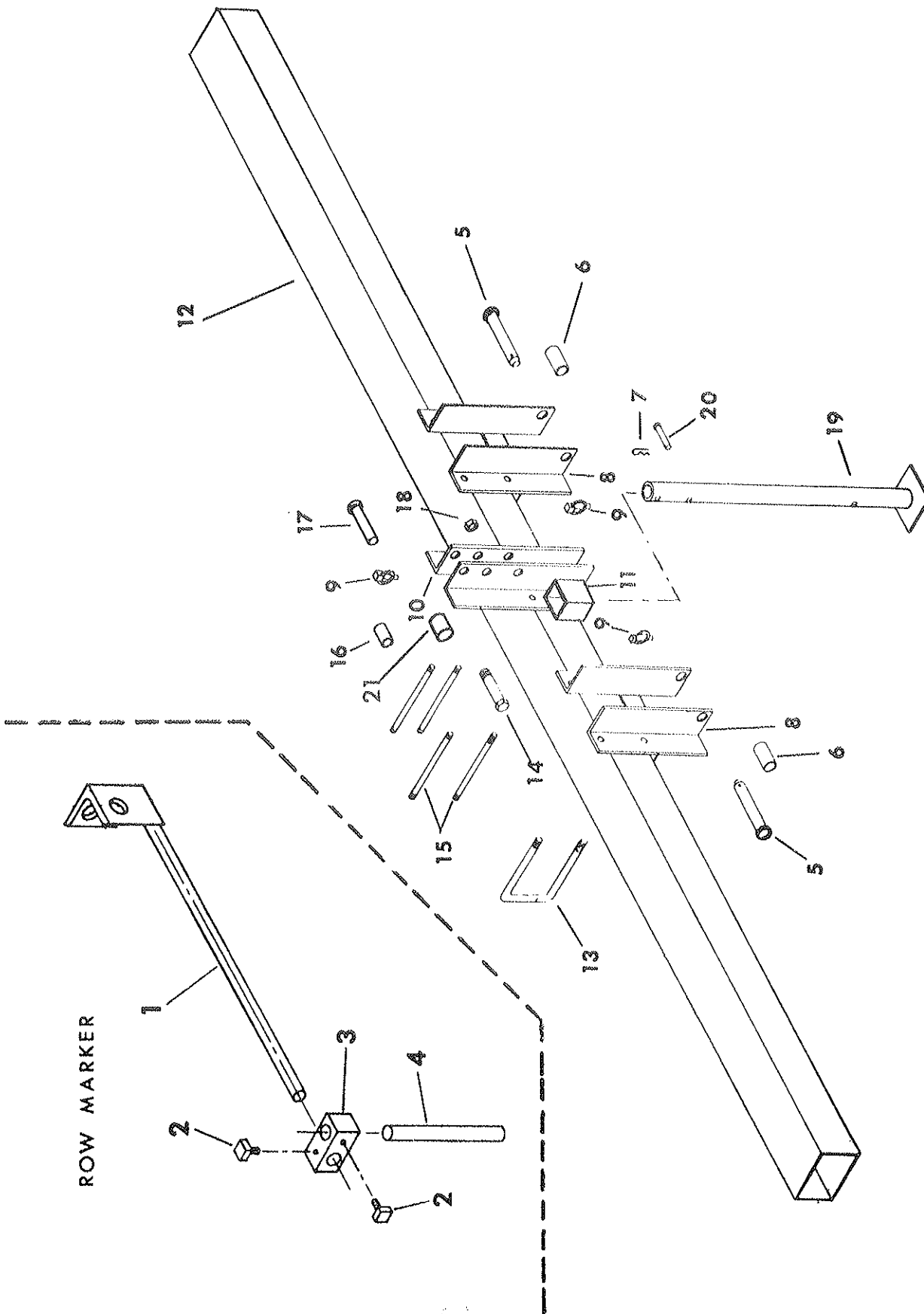
Repairs cannot be purchased retail direct from factory. Order through your Brillion.

MODEL NO.

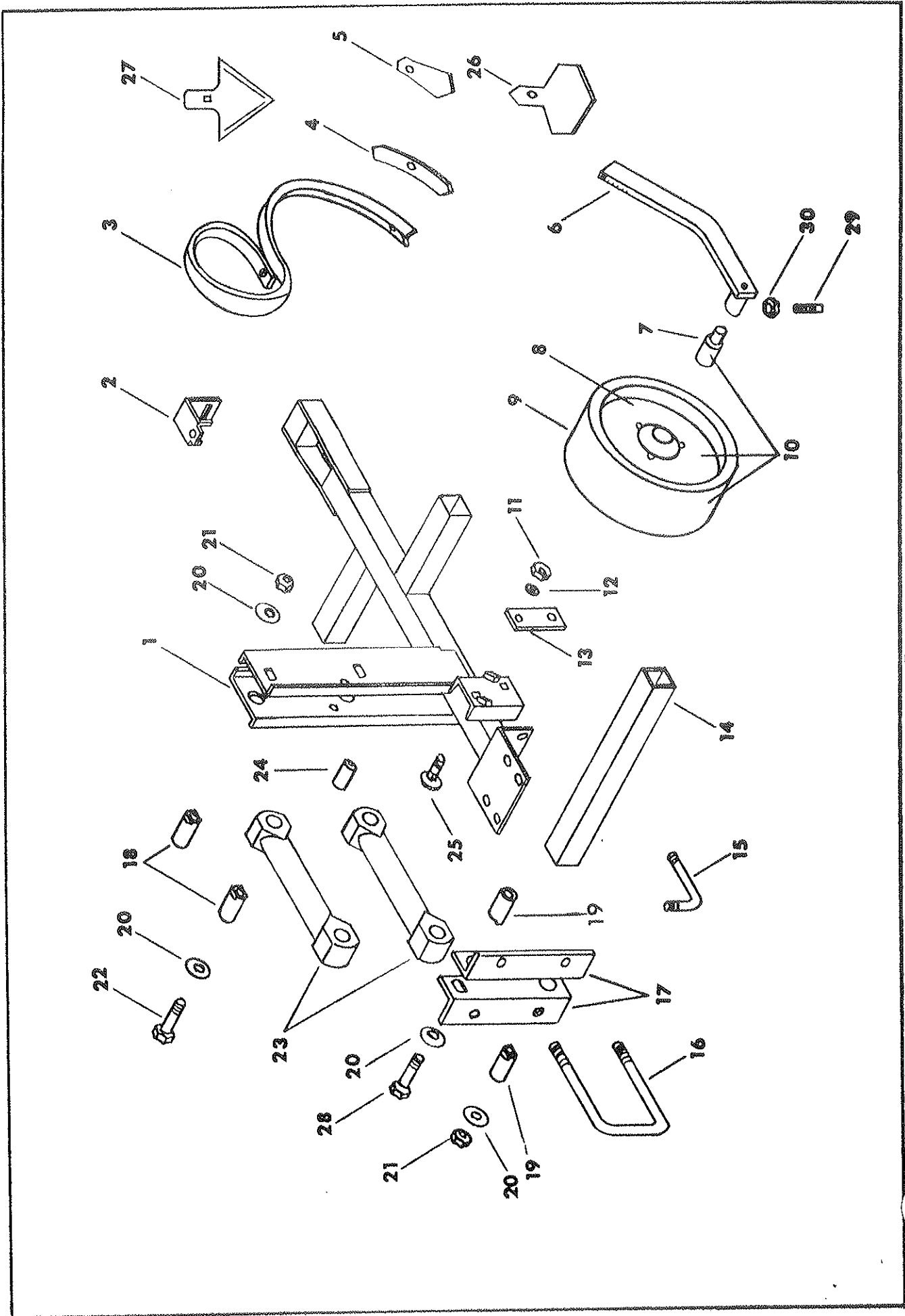
DATE PURCHASED



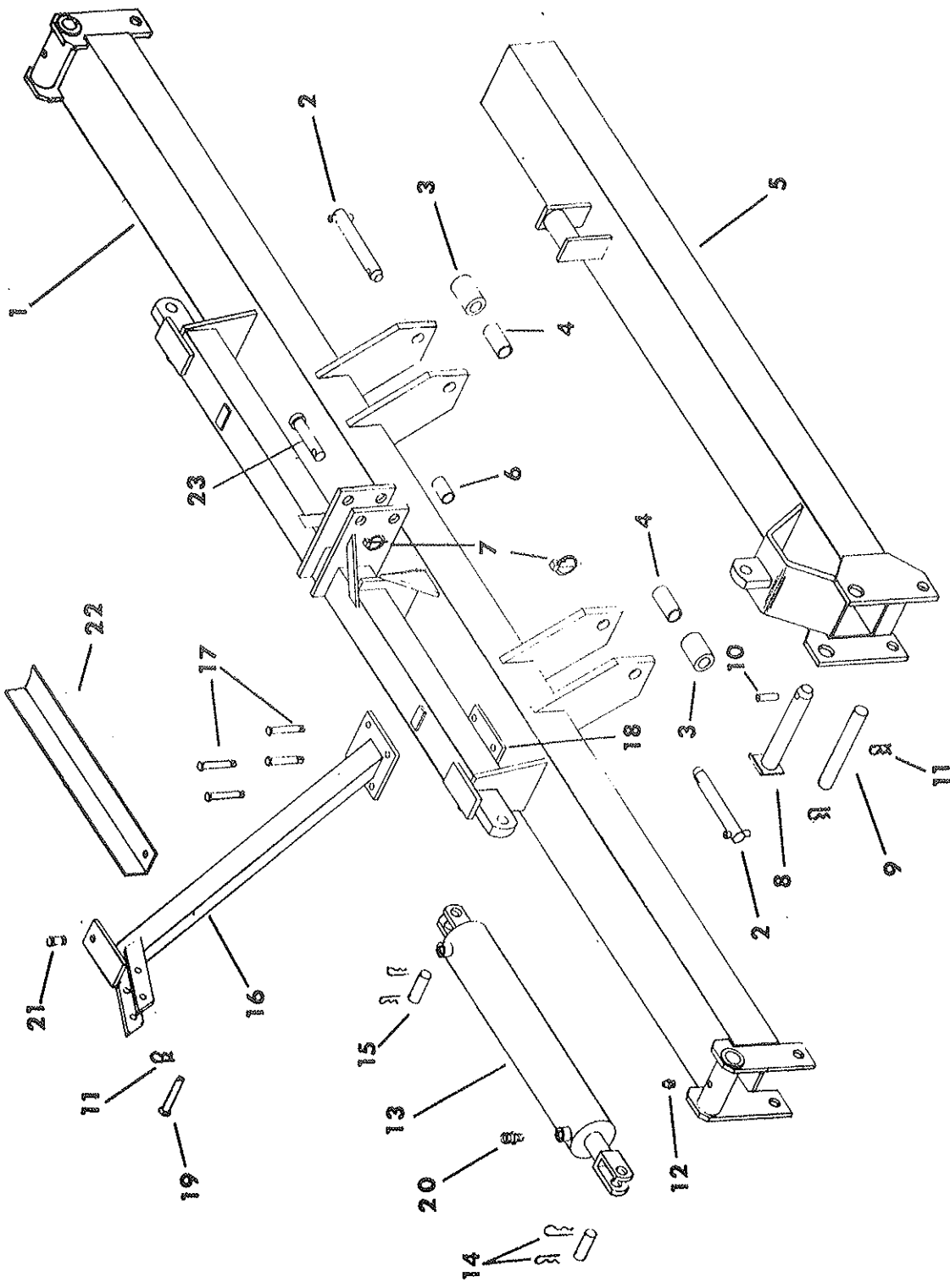
BRILLION IRON WORKS
BRILLION, WISCONSIN 54110



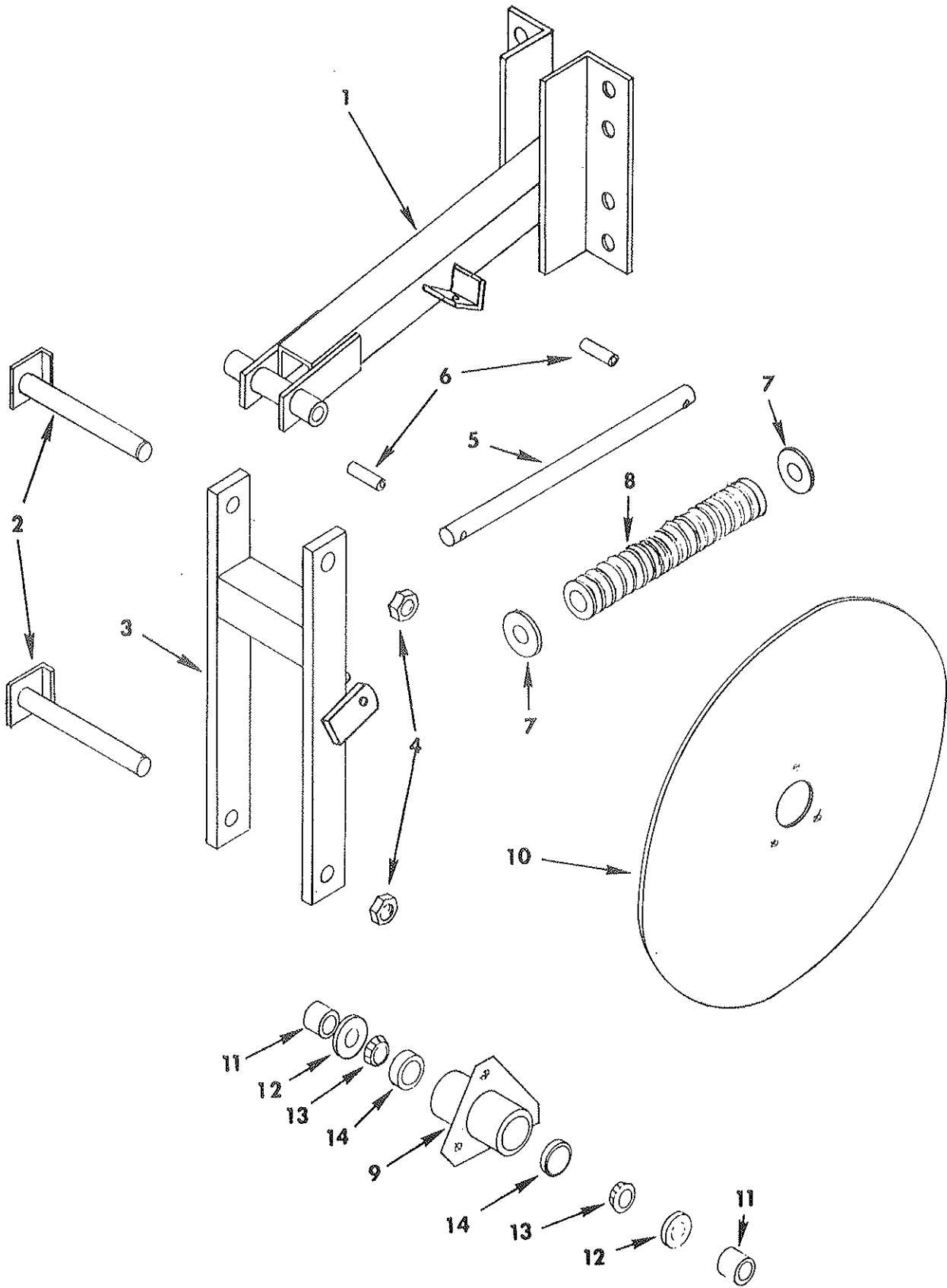
ROW MARKER				
Index No.	Part No.	Description	Qty.	Weight
1	8D-941	Marker Bracket	1	1.5
2	1C-235	Set Screw (1/4-20 x 1/2" Long)	2	
3	8D-942	Pivot Block	1	.4
4	8D-943	Rod	1	.8
BRS MODEL TOOL BARS & HITCH				
5	5D-156	Clevis Pin (1-1/8 x 5" Long) Cat. II/III	2	1.5
	3J-910	Clevis Pin (7/8" x 5" Long) Cat. I	2	1.3
6	5D-158	Sleeve	2	.5
7	6C-400	Hairpin Cotter	1	
8	2J-190	Hitch Weldment Cat. II/III	2	29.4
	3J-905	Hitch Weldment Cat. I	2	29.4
9	5D-110	Klik Pin	3	.1
10	1J-980	Mast Angle - L.H. Cat. II/III	1	12.3
	3J-903	Mast Angle - L.H. Cat. I	1	12.3
11	1J-831	Mast Angle Weldment Cat. II/III	1	14.5
	3J-901	Mast Angle Weldment Cat. I	1	14.5
12	1J-802	Tool Bar (BRS-440 & BRSH-4402)	1	204.0
	1J-841	Tool Bar (BRS-630 & BRSH-6302)	1	226.0
	1J-842	Tool Bar (BRS-640 & BRS-830)	1	298.0
	2J-174	Tool Bar (BRS-840)	1	518.0
	1J-845	Tool Bar (BRS-1222)	1	427.0
13	1J-801	U-Bolt 5 x 7 x 5/8	4	1.6
14	8D-922	Capscrew (1"-8 NC x 4-1/2") Cat. II/III	1	1.3
	6D-741	Capscrew (3/4"-10 NC x 4") Cat. I	1	1.0
15	8D-900	Stud (5/8"-11 NC x 9-3/4" Long)	4	.7
16	6D-988	Spacer, 2-1/8" Long Cat. II/III	1	.3
	4J-664	Spacer, 2-1/8" Long Cat. I	1	.3
17	6D-529	Clevis Pin (1 x 4-1/2" Long) Cat. II/III	1	1.3
	3J-913	Clevis Pin (3/4 Dia. x 4-1/2" Lg.) Cat. I	1	1.1
18	6D-306	Hex Lock Nut, 1-8 NC Cat. II/III	1	.1
	6C-729	Hex Lock Nut, 3/4-10 NC Cat. I	1	.1
19	9D-47	Stand	1	9.4
20	3C-335	Clevis Pin, 1/2 x 3	1	.1
21	5D-157	Sleeve, 1-15/16" Long (Cat. II/III)	1	.2
	3J-912	Sleeve, 1-15/16" Long (Cat. I.)	1	.2



GANG ASSEMBLY				
Index No.	Part No.	Description	Qty. Per Gang	Weight
1	2J-946	Gang Tube Weldment	1	34.0
	2J-947	Gang Assembly		69.0
2	1J-834	Clamp	5	.8
	2J-241	Carriage Bolt, 7/16-14 NC x 3-1/2" Lg.	5	
	1C-314	Lockwasher, 7/16" Std.	5	
	1D-14	Hex Lock Nut, 7/16-14 NC	5	
3	1J-887	Spring Tine - Less Point	5	6.0
	7D-728	Cultivator Bolt, 3/8-16 NC x 1-1/2" Lg.	5	
	7D-729	Flat Washer, Heavy 3/8"	5	
	7D-730	Nut, 3/8-16 NC Heavy Hex	5	
4	2J-155	Reversible, 1-3/8" Point	5	.7
5	7D-14	Duck Foot Point 2-1/2"	5	.5
6	3J-784	Gauge Wheel Arm	1	5.0
7	1J-808	Bearing	1	1.0
8	1J-810	Wheel Half	2	3.0
9	1J-996	Tire	1	3.0
	1C-237	Capscrew, 5/16-18 NC x 3/4" Lg.	3	
	3C-127	Lockwasher, 5/16" Std.	3	
	1C-385	Hex Nut, 5/16-18 NC	3	
10	1J-804	Gage Wheel Assembly (#7, #8 & #9)	1	10.0
11	1C-390	Hex Nut, 1/2-13 NC	2	
12	1C-109	Lockwasher, 1/2" Std.	2	
13	1J-835	Strap	1	.6
14	1J-803	Extension Tube	2	4.6
15	1J-836	Clamp Bolt - Long	2	.4
	1J-837	Clamp Bolt - Short (Used on end gangs with one extension tube.)		.3
16	1J-801	U-Bolt, 5 x 7 x 5/8"	2	1.6
	1B-166	Lockwasher, 5/8" Std.	4	
	1C-392	Hex Nut, 5/8-11 NC	4	
17	1J-811	Gang Angle	2	4.4
18	1J-814	Pivot Tube (Used on rear of link.)	2	.1
19	5J-184	Pivot Tube (Used on front of link.)	2	.1
20	1C-122	Flat Washer, 5/8"	8	
21	5C-461	Locknut, 5/8-11 NC	5	
22	2C-302	Capscrew, 5/8-11 NC x 3-1/2 Long	3	.1
23	1J-812	Parallel Link	2	12.0
24	1J-813	Stop Tube	1	.3
25	8C-679	Carriage Bolt, 1/2-13 NC x 2-1/2	2	.1
26	1J-914	4" Shovel	5	1.0
27	2J-154	7" Sweep	5	1.2
28	7D-247	Capscrew, 5/8-11 NC x 3-3/4" Long	2	.2
29	6C-222	Set Screw, 5/16-18 NC x 3/4 Lg., Sq. Head	1	
30	6C-223	Jam Nut, 5/16-18 NC Hex	1	

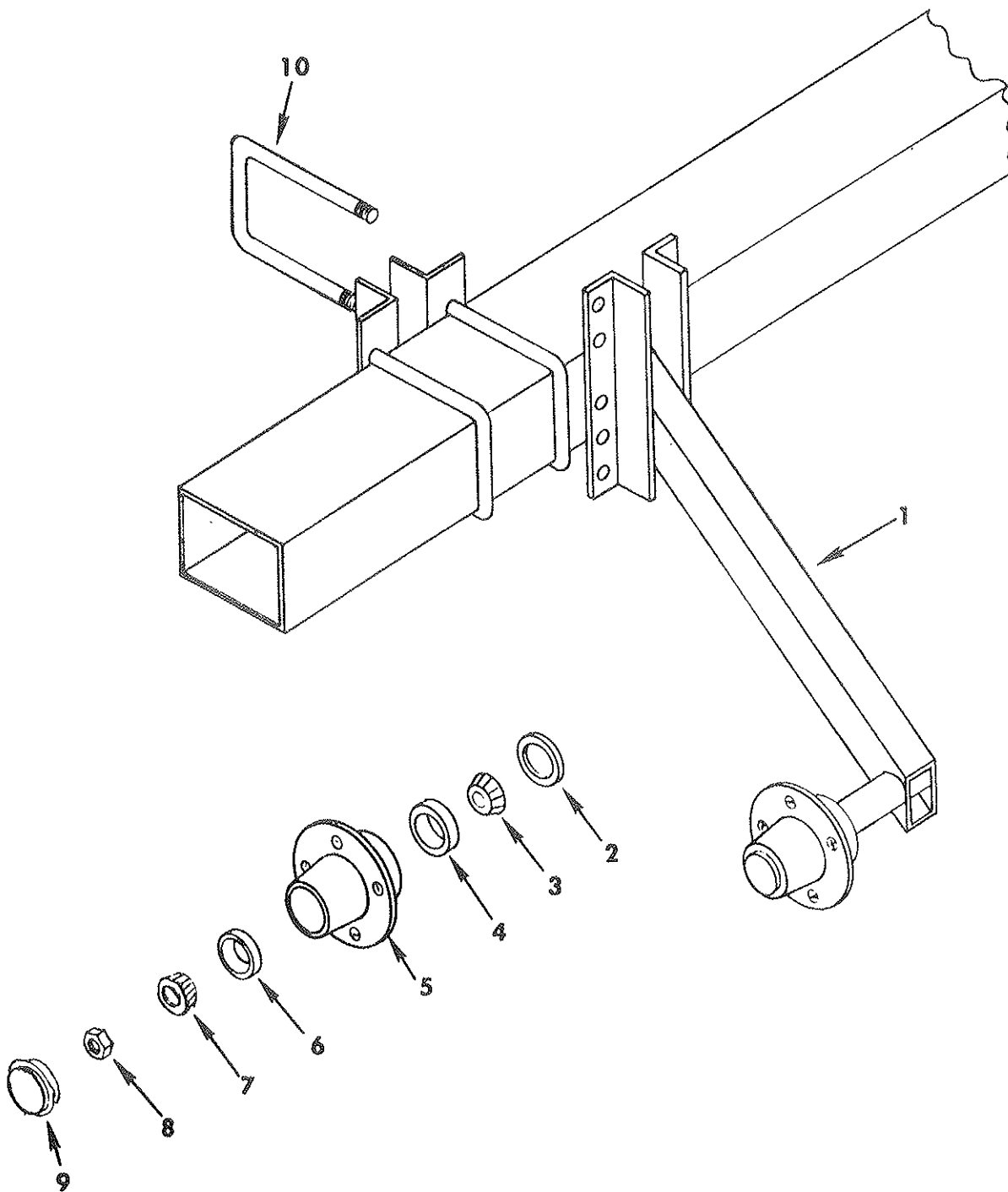


BRSF FOLDING TOOL BAR MODELS				
Index No.	Part No.	Description	Qty.	Weight
1	3J-643	Center Tool Bar (BRSF Model: 12302)	1	684.0
	2J-163	Center Tool Bar (BRSF Models: 6402, 8302, 8362)	1	336.0
2	1J-848	Center Tool Bar (BRSF Model: 8402)	1	414.0
	8D-424	Hitch Pin Assembly	2	2.5
3	8D-425	Spacer	2	1.6
4	5D-158	Sleeve	2	.5
5	3J-644	Wing Weldment (BRSF Model: 12302)	2	204.0
	1J-860	Wing Weldment (BRSF Models: 6402, 8302)	2	156.0
	1J-861	Wing Weldment (BRSF Models: 8362, 8402)	2	181.0
6	5D-157	Sleeve	1	.3
7	5D-110	Klik Pin	3	.1
8	3J-646	Hinge Pin (BRSF Model: 12302)	2	5.5
	1J-880	Hinge Pin (BRSF Models: All Except 12302)	2	5.0
9	3J-647	Pin, 1" Dia. x 11" Long (BRSF Model: 12302)	2	2.5
	2J-153	Pin, 1" Dia. x 9" Long (BRSF Models: All Except 12302)	2	2.0
10	6D-854	Roll Pin, 1/2" x 3"	2	.1
	6D-966	Machinery Bushing	6	
11	4C-856	Hair Pin Cotter	6	
12	9D-923	Grease Fitting, 1/8 NPT	2	
13	9D-327	Hydraulic Cylinder, 3" Dia. x 24" Stroke (BRSF Model: 12302)	2	42.0
	9D-137	Hydraulic Cylinder, 3" Dia. x 16" Stroke (BRSF Models: All Except 12302)	2	29.0
14	6D-413	Hair Pin Clip	4	
15	6D-412	Cylinder Pin	2	.3
16	3J-645	Wing Support (BRSF Model: 12302)	2	32.7
	1J-873	Wing Support (BRSF Models: All Except 12302)	2	32.7
17	1C-266	Capscrew, 1/2-13 NC x 5-1/2" Long	8	.3
18	1J-918	Plate	2	2.3
	1C-109	Lockwasher, 1/2" Std.	10	
	1C-390	Hex Nut, 1/2-13 NC	10	
19	8D-382	Clevis Pin, 1/2 x 4"	2	.5
20	6D-716	Flow Restrictor	2	.1
21	1C-334	Capscrew, 1/2-13 NC x 1-1/4" Lg.)	2	.1
22	2J-164	Support Angle (BRSF Models: 6402, 8302, 8362)	1	20.5
	1J-883	Support Angle (BRSF Model: 8402)	1	31.3
	3J-612	Support Angle (BRSF Model 12302)	1	40.6
23	6D-529	Clevis Pin, 1 x 4-1/2"	1	.6



1J-776 COULTER ASSEMBLY - OPTIONAL

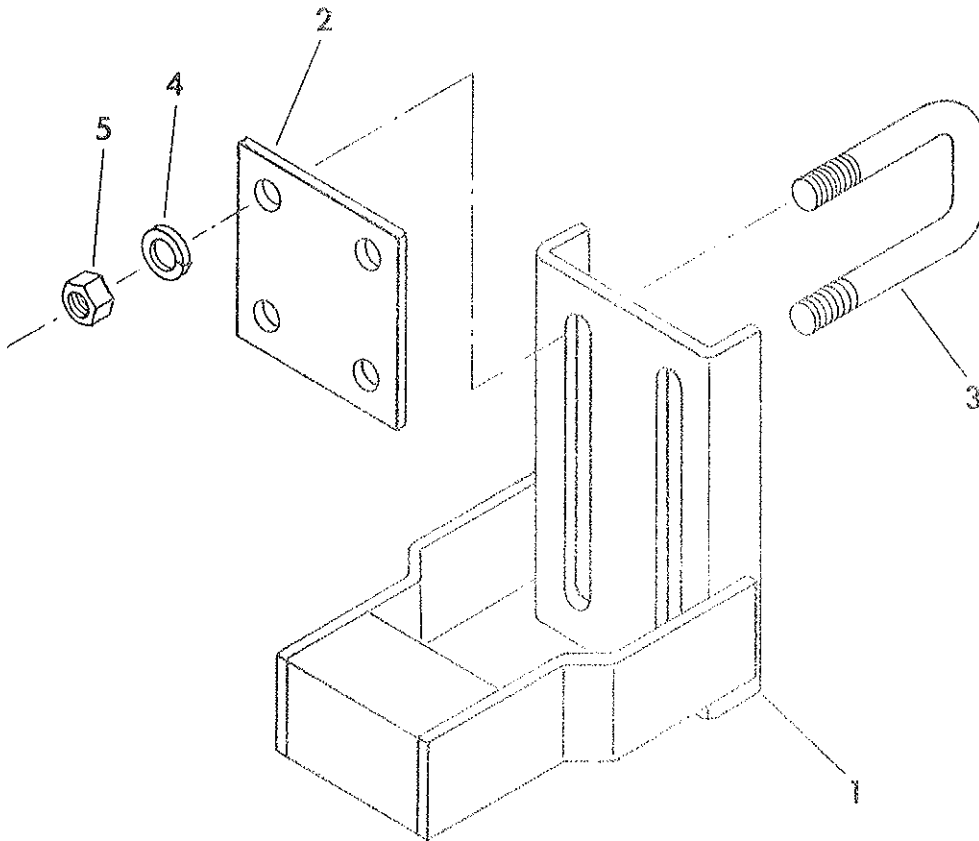
Index No.	Part No.	Description	Qty.	Weight
	1J-776	Coulter Assembly - Complete	1	56.0
1	2J-185	Support Frame	1	20.5
2	1J-787	Pivot Shaft	2	.5
3	2J-186	Pivot Frame	1	16.0
4	6C-729	Hex Locknut, 3/4-10 NC	2	
5	2J-184	Spring rod	1	1.8
6	4C-864	Roll Pin, 3/8 x 1-3/4"	2	
7	2C-458	Flat Washer, 3/4" S.A.E	2	
8	6D-362	Spring	1	1.3
9	1J-786	Hub (Includes (2) 5C-911 Bearing Cone, (2) 5C912 Bearing Cup and (3) 6J575 Wheel Stud)	1	2.8
	1C-183	Lockwasher, 3/8" Std.	3	
	1J-928	Nut, 3/8-24 NF Hex	3	
10	1J-785	Coulter Blade	1	10.4
11	2J627	Spacer	2	.1
12	9D-76	Seal (CR#11164)	2	
13	5C-911	Bearing Cone (#LM11949)	2	.2
14	5C-912	Bearing Cup (#LM11910)	2	.1



1J-799 GAGE WHEEL KIT - OPTIONAL

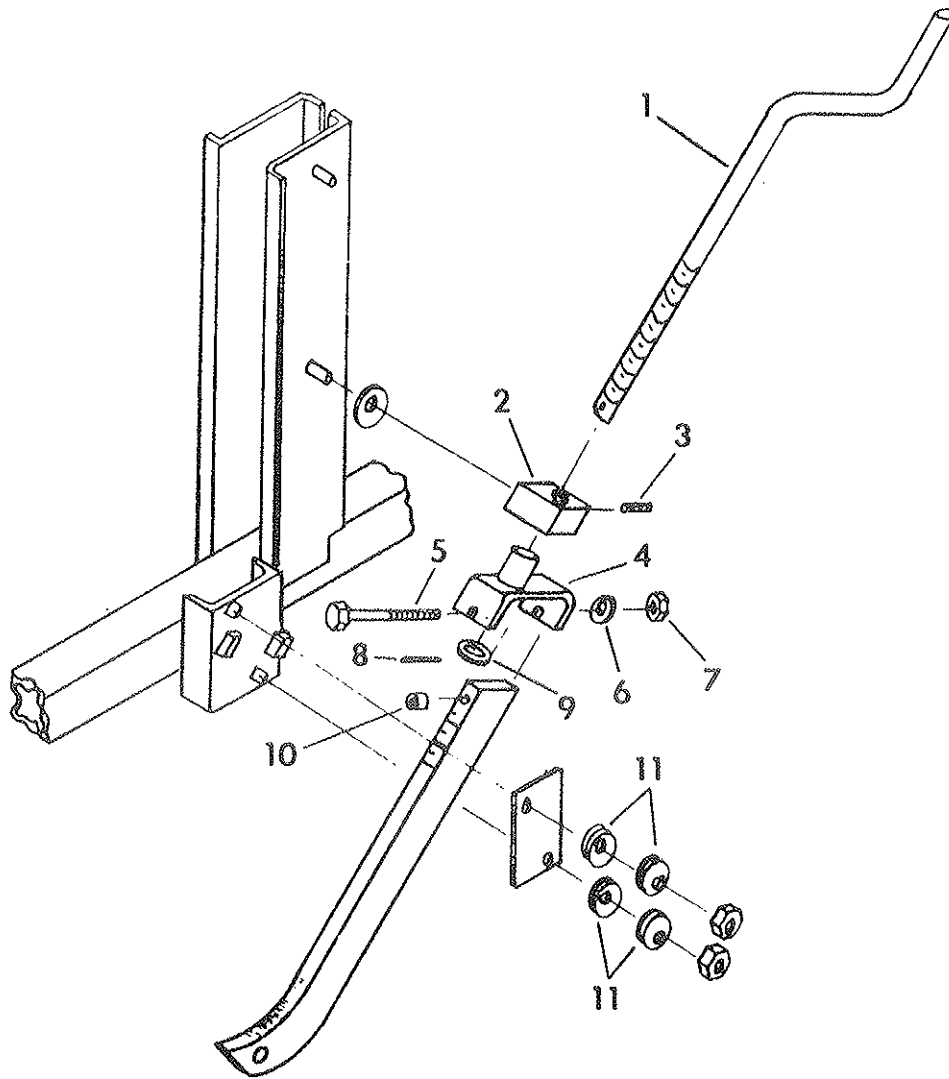
Index No.	Part No.	Description	Qty.	Weight
1	2J-345	R.H. Wheel Arm (Less Hubs) - Shown	1	38.6
	2J-344	L.H. Wheel Arm (Less Hubs) - Opposite	1	38.6
2	8D-511	Seal	1	.1
3	5C-480	Bearing Cone (#LM48548)	1	.2
4	5C-479	Bearing Cup (#LM48510)	1	.2
5	1J-390	Wheel Hub	1	8.6
6	5C-912	Bearing Cup (#LM11910)	1	.2
7	5C-911	Bearing Cone (#LM11949)	1	.3
8	3C-173	Slotted Nut, 3/4-16 N. F.	1	
	3C-350	Cotter Pin, 5/32 x 1"	1	
9	1J-463	Hub Cap	1	
10	1J-801	U-Bolt	4	1.6
	1B-166	Lockwasher, 5/8"	8	
	1C-392	Nut, 5/8-11 NC Hex		
*	4C-129	Wheel, 15 x 5 (5 Bolt)	2	16.0
*	5C-100	Wheel Bolt	10	.1
		*Not Shown		

3J-261 VERTICAL ADJUSTING BRACKET (OPTIONAL)



Index No.	Part No.	Description	No. Used	Weight
1	3J-351	Shank Mount	1	6.0
2	3J-354	Plate	1	.8
3	5D-921	U-Bolt	2	.5
4	1C-109	Lock Washer	4	
5	1C-390	Nut, 1/2-13 NC Hex	4	

3J-782
GAUGE WHEEL CRANK KIT (OPTIONAL)



Index No.	Part No.	Description	Qty.	Weight
1	3J-775	Crank	1	3.4
2	3J-779	Block	1	.6
3	5C-886	Set Screw - 5/16"	1	
4	3J-776	Yoke	1	.5
5	3C-236	Capscrew, 3/8-16 NC x 3" Lg.	1	.1
6	1C-183	Lockwasher - 3/8"	1	
7	1C-277	Nut, 3/8-16 NC Hex	1	
8	3D-478	Roll Pin, 5/16 Dia. x 1-1/8" Lg.	1	
9	8C-381	Machinery Bushing	1	
10	3J-781	Spacer	1	.1
11	3J-780	Belleville Washer	8	

CYLINDER IDENTIFICATION

1. Determine style of cylinder. Welded construction or tie rod construction. Tie rod construction has four long bolts running the length of the cylinder to hold the cylinder together. Welded construction has base welded to the tube.
2. Determine size of cylinder - completely retract cylinder measure distance from center of one attaching pin to other attaching pin. Measure outside diameter of tube and subtract $3/8''$ or $1/2''$ to get even dimension. The cylinder diameter is in even sizes - $3''$, $3-1/2''$, $4''$. So a tube that measures $3-7/8''$ O.D. is a $3-1/2''$ cylinder. Series cylinders are an exception, and are usually sized in $1/4''$ increments such as $5''$, $4-3/4''$, $4-1/2''$, etc.
3. Measure rod size.
4. Look in index of this book to find machine used and location of cylinder on machine. Turn to the particular cylinder and find cylinder type. Check cylinder size, retracted length and rod size. When all these items check, the cylinder is identified.

Study cylinder construction, these drawings reflect as accurately as possible the actual construction of the cylinder.

HYDRAULIC CYLINDER USAGE INDEX

	<u>Page No.</u>	
6D-138	Wing Raising on STS & STR Harrows - - - - -	3
6D-724	Wing Raising on HSD-360 Harrow	
	Machine Raising WP-108, WPW-128 Pulverizer - - - - -	4
9D-137	Folding Toolbar BRSF & BSFF Ro-Crop Cultivator	
	Folding Toolbar BRCF-6402, BRCF-8302, BRCF-8402	
	Wing Raising on Soil Builder (15 & 17 Shank)	
	Folding Toolbar BCFF Ro-Crop Cultivator	
	Machine Raising X-108 Pulverizer - - - - -	5
9D-282	Hitch Cylinder WM-2601 & 3001, WM-2602 & 3002	
	Machine Raising Kit on SST-961, SST-1201 & SSLFT-120-	6
9D-327	Folding Toolbar BRSF-12302 Ro-Crop Cultivator - - - -	7
9D-524	Wing Raising WM-2601	
	Machine Raising WM-2601 Beginning 8/1/76, WM-3002	
	Machine Raising on ML Mulcher	
	Wing Raising WP-108, WPW-128 Pulverizer	
	Machine Raising XL-144 Pulverizers	808-06
	Wing Raising (SG-24 to SG-30) Soil Groomer - - - - -	8 - 9
9D-731	Wing Raising WM-3001, WM-3002 Mulcher	878-08
	Machine Raising WM-3001, Beginning 8/1/76, WM-3002	
	Machine Raising WM-360 - - - - -	208-08
9D-762	SST-144 Seeder - - - - -	11
2J-674	Machine Raising on Soil Builder (5-11 Shank) - - - -	12 - 13
3J-567	Hitch Cylinder WM-360 - - - - -	14
3J-568	Wing Raising WM-360 - - - - -	15
3J-603	Tooth Depth Control WM-360 - - - - -	16
	Machine Raising on Flail Shredder	
3J-815	Machine Raising on FCF Field Cultivator - - - - -	17 - 18
3J-816	Machine Raising on FCF Field Cultivator - - - - -	19 - 20
3J-817	Machine Raising on FCF Field Cultivator - - - - -	21 - 22
3J-818	Wing Raising on FCF Field Cultivator - - - - -	23
4J-657	Wing Raising on Cultivator-Incorporator - - - - -	24
4J-658	Machine Raising on Cultivator-Incorporator	
	Machine Raising on (SG-24 to SG-30) Soil Groomer - - -	25
4J-659	Machine Raising on Cultivator-Incorporator	
	Machine Raising on (SG-24 to SG-30) Soil Groomer- - -	26
4J-660	Machine Raising on Cultivator-Incorporator	
	Machine Raising on (SG-24 to SG-30) Soil Groomer- - -	27
4J-661	Machine Raising on Cultivator-Incorporator	
	Machine Raising on (SG-12 to SG-30 & SGH-24) Soil Groomer (Except SG-24) - - - - -	28
5J-128	Machine Raising on Soil Builder (13, 15 & 17 Shank) -	29
5J-280	Machine Raising on TPW Pulverizers - - - - -	30 - 31
	Hydraulic Coulter Depth Control Option for Soil Builder (7-11 Shank)	
5J-830	Wing Raising on (XLW-120 & XLW-144) Pulverizer - - -	32
5J-835	Same as 9D-524 BIW with Side Ports	
	Folding Tool Bar BCFF-1230 Ro-Crop Cultivator	
	Wing Raising WM-2602 Mulcher	
	Wing Raising (SG-18 to SG-21) Soil Groomer - - - - -	8 - 9
6J-11	Machine Raising on (SG-12 to SG-21) Soil Groomer- - -	33
6J-12	Machine Raising on (SG-12 to SG-30 & SGH-24) Soil Groomer	34
6J-216	Wing Raising on (XLW-84 to XLW-108) Pulverizer - - -	35
6J-811	Wing Raising on (XW-84 to XW-108) Pulverizer Wings- -	36
6J-812	Wing Raising on (XW-60 & XW-72) Pulverizer Wings - -	37

HYDRAULIC CYLINDER USAGE INDEX
(continued)

		<u>Page No.</u>
7J-194	Machine Raising on (SGH-18 & SGH-21) Soil Groomer	- - - 38
7J-195	Machine Raising on (SGH-18 & SGH-21) Soil Groomer	- - - 39
7J-680	Machine Raising on Extended Frame Soil Builders	- - 40-40A
8J-782	Machine Raising on (SG-121 to SG-211) Soil Groomers, after 1-25-88	- - - - - 41
8J-783	Machine Raising on (SG-121 to SG-301 & SGH-241) Soil Groomers, after 1-25-88	- - - - - 42
8J-784	Machine Raising on (SG-121 to SG-301 & SGH-241, except SG-241) Soil Groomers, after 1-25-88.	- - - - - 43
8J-808	Machine Raising, Cultivator-Incorporator after 1-25-88. Machine Raising on (SG-241 to SG-301) Soil Groomers, after 05/26/88.	- - 44
8J-874	Machine Raising on (SG-241 to SG-301) Soil Groomers, after 05/26/88.	- - 45
8J-875	Machine Raising on (SG-241 to SG-301) Soil Groomers, after 05/26/88.	- - 46

<u>Code Letter</u>	<u>Manufacturer</u>
BIW	Brillion Iron Works
G	Hydraulic Gear
L	Lantex
P	Prince

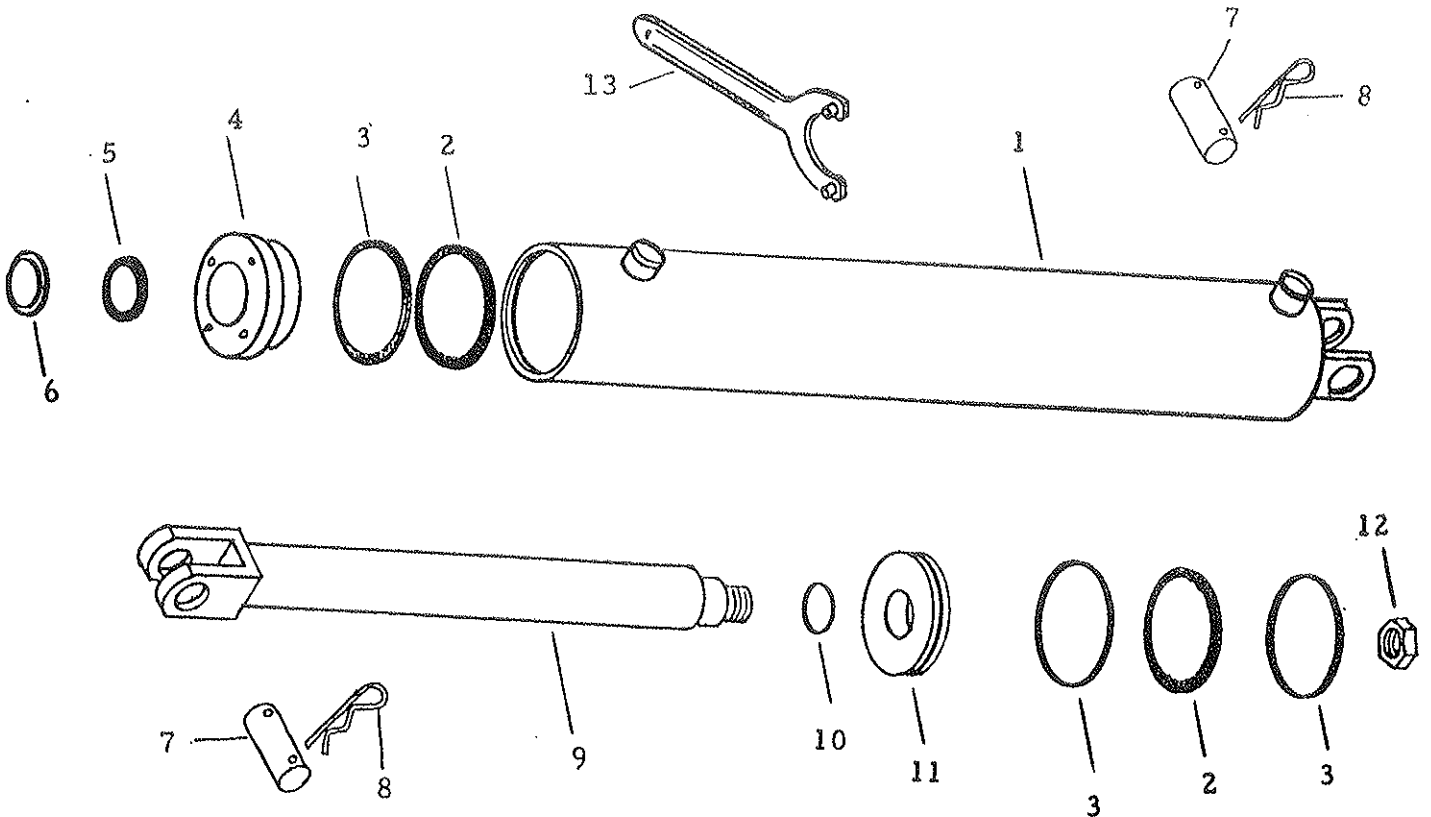
9D137 G Hydraulic Cylinder 3 x 16

Hydraulic Gear #3016-01 Painted Red

1-3/8 Dia. Rod, 26-1/4 Retracted, 42-1/4 Extended Length

Item	Part No.	Description	Qty.
1	1J-962	Tube Assembly	1
*2	NSS	O Ring	2
*3	NSS	Back-Up Ring	3
4	1J-963	Gland	1
*5	NSS	Rod Seal & Back-Up Rings	1
*6	NSS	Wiper	1
7	5J-650	Cylinder Pin	2
8	4C-856	Hairpin Cotter	4
9	1J-964	Rod Assembly	1
*10	NSS	O Ring	1
11	1J-965	Piston	1
12	6C-750	Hex Nut 7/8-14 Lock	1
*	1J-966	Seal Kit (Items Marked "*")	
13	5J-132	Spanner Wrench (Disassembly Tool)	

NSS - Not Serviced Separately



9D-327 G Hydraulic Cylinder 3 x 24

Hydraulic Gear #3024-01 Painted Red

1-1/8 Dia. Rod, 34-1/4 Retracted, 58-1/4 Extended Length

Item	Part No.	Description	Qty.
1	3J-264	Tube Assembly	1
*2	NSS	O Ring	2
*3	NSS	Back-Up Ring	3
4	3J-266	Packing Gland	1
*5	NSS	Rod Seal & Back-Up Rings	1
*6	NSS	Wiper	1
7	5J-650	Cylinder Pin	2
8	1D-594	Hairpin Cotter	4
9	3J-262	Rod Assembly	1
*10	NSS	Seal	1
11	3J-265	Piston	1
12	6D-918	Hex Nut 3/4-16 Lock	1
*	3J-263	Seal Kit (Items Marked "**")	
13	5J-132	Spanner Wrench (Disassembly Tool)	

NSS - Not Serviced Separately

