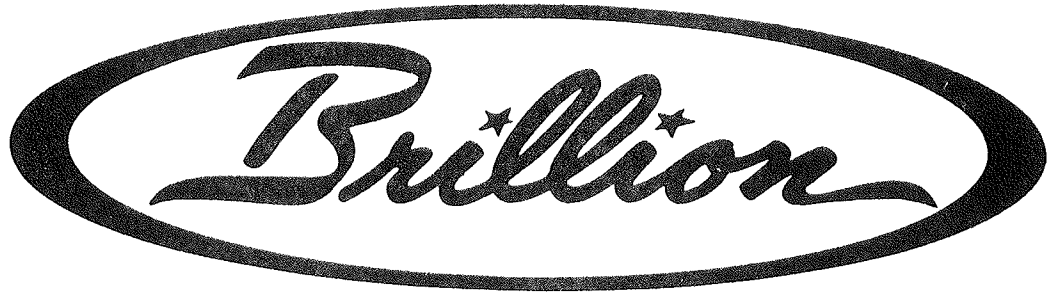


REPAIR PARTS CATALOG



72" ROTARY SHREDDERS

MODELS RSS-726 & RSSP-726
MODELS RSSC-726 & RSSPC-726

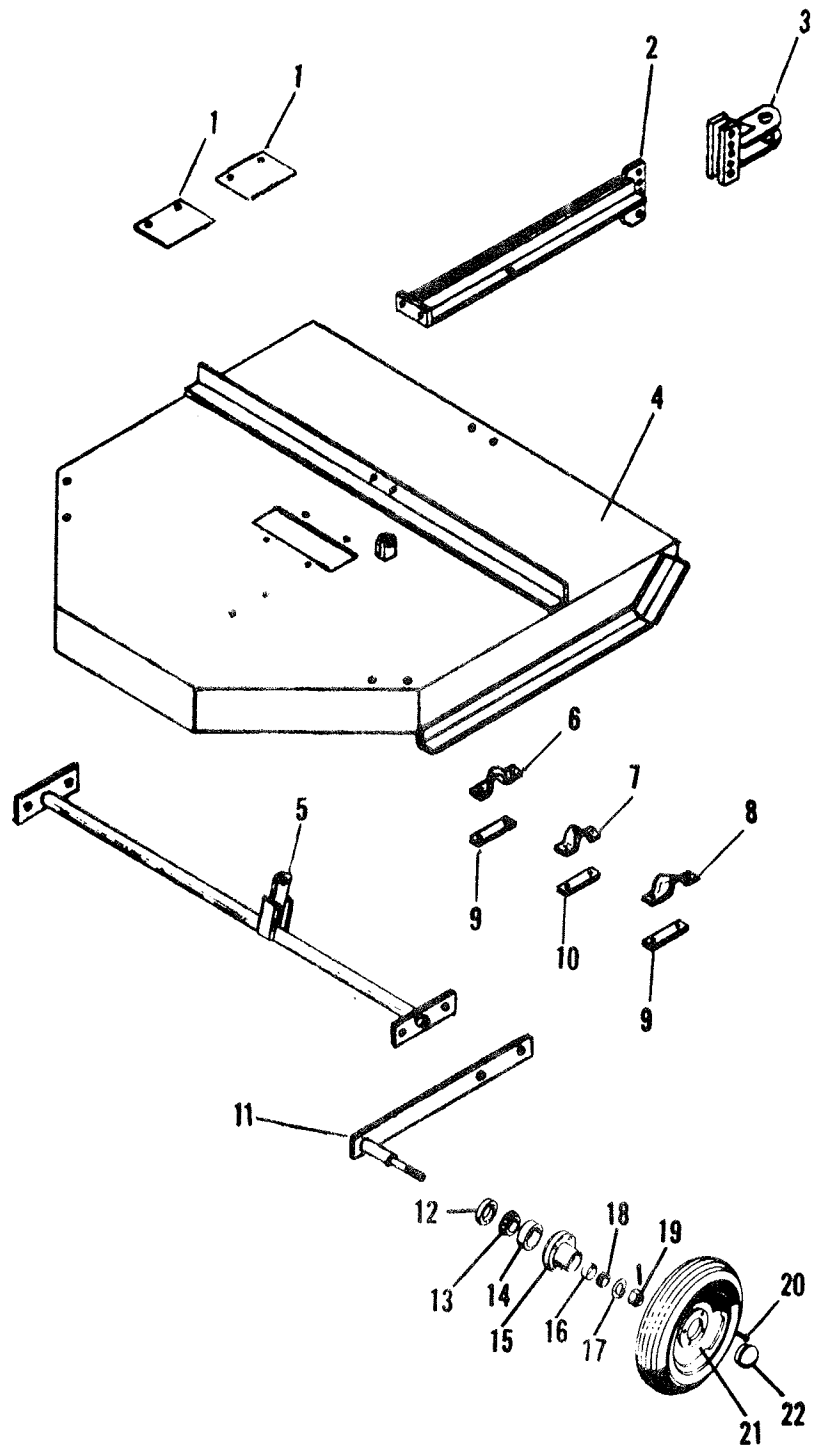
IMPORTANT! Repairs cannot be purchased retail direct from factory. Order through your Brillion dealer or any established implement dealer.

MODEL NO.

DATE PURCHASED

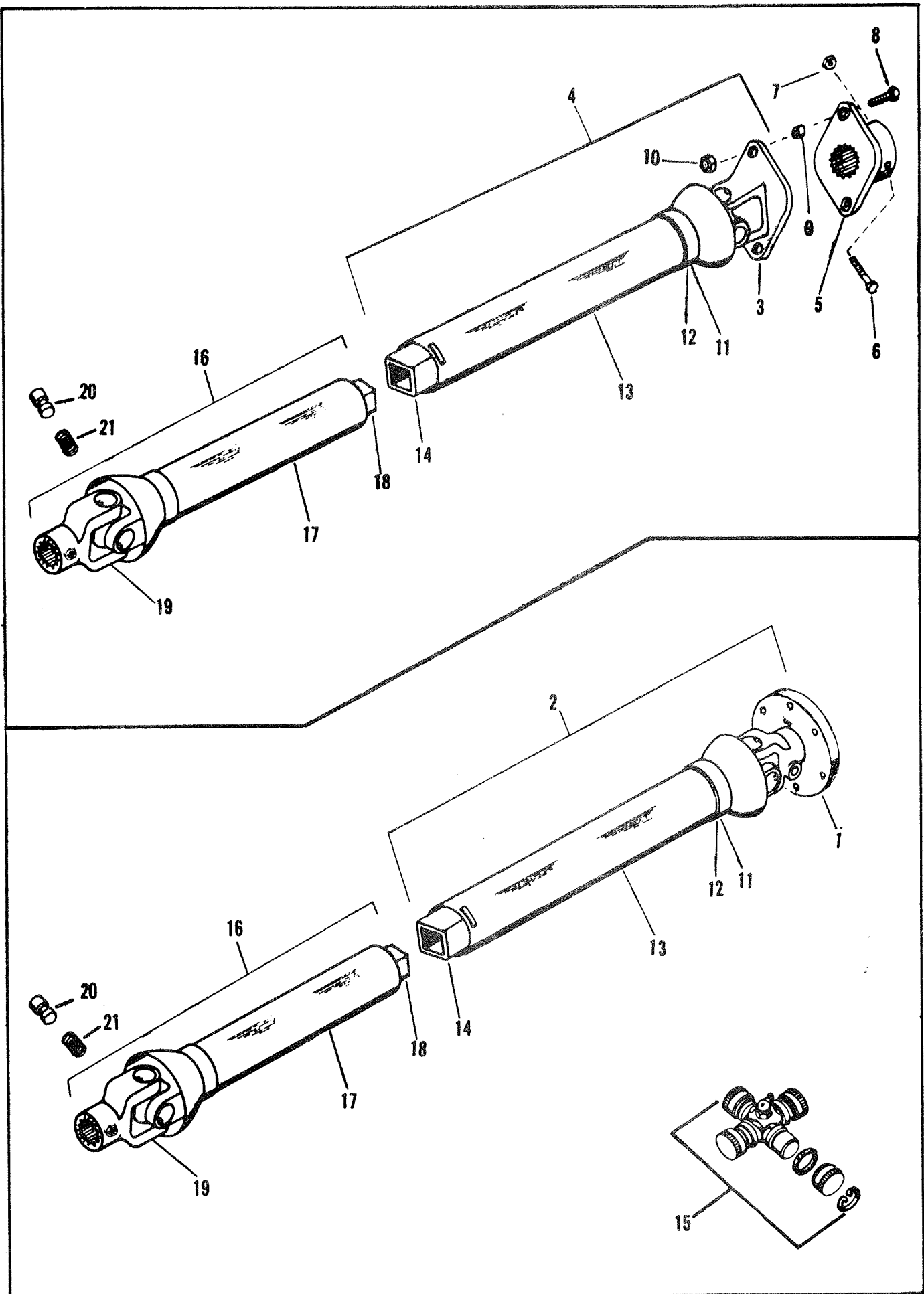


BRILLION IRON WORKS
BRILLION, WISCONSIN 54110



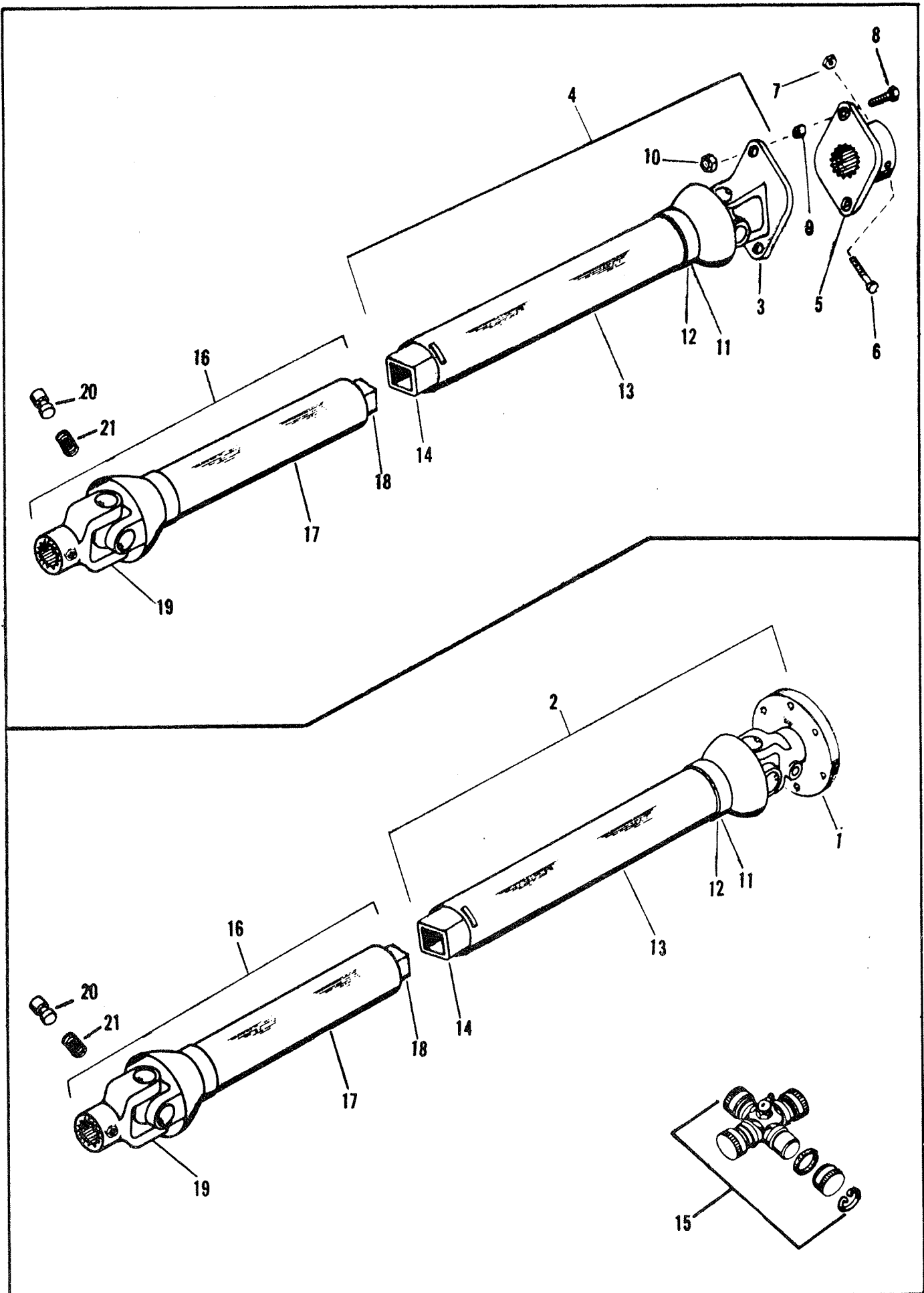
HOOD, DRAWBAR AND AXLE ASSEMBLY

Index No.	Part No.	Description	Pcs. Req'd.
1	9C-384	Cover Plate	2
		Capscrew, 5/8-18 NF x 2-3/4" Long	4
		Lockwasher, 5/8 Med. Spring	6
		Nut, 5/8-18 NF, Grade B Stover	4
2	9C-302	Drawbar	1
3	1D-293	Adjustable Hitch	1
		Capscrew, 5/8-11 NC x 2-1/2 long	2
		Nut, 5/8-11 NC	2
		Capscrew, 1/2-13 NC x 1-1/2" Long	4
		Nut, 1/2-13 NC	10
		Lockwasher, 1/2" Med. Spring	10
4	6D-758	Hood Assembly	1
5	9C-280	Axle Assembly	1
6	8C-622	L. H. 45° Axle Clamp	1
7	6C-285	Axle Bearing	1
8	8C-623	R. H. 45° Axle Clamp	1
9	8C-624	Axle Clamp Bottom	2
10	6C-593	Axle Bearing Bottom	1
		Capscrew, 1/2-13 NC x 2" Long	6
11	9C-455	Arm & Shaft Assembly	2
12	5C-910	Seal	2
13	5C-913	Bearing Cone	2
14	5C-914	Bearing Cup	2
15	5C-904	Wheel Hub	2
16	5C-912	Bearing Cup	2
17	5C-907	Washer	2
18	5C-911	Bearing Cone	2
19	5C-909	Slotted Nut	2
		Cotter Pin, 5/32 Dia. x 1" Long	2
20	5C-100	Wheel Bolt	8
21	5C-916	Wheel Rim - 15"	
	3C-470	Wheel Rim - 14"	
	1D-900	Laminated Tire & Rim	2
22	5C-908	Cap	2
		Capscrew, 3/4-10 NC x 2-3/4 Long	2
		Nut, 3/4-10 NC	2
		Lockwasher, 3/4 Med. Spring	2



UNIVERSAL DRIVE SHAFT
RSS-726 DRAWBAR MODEL

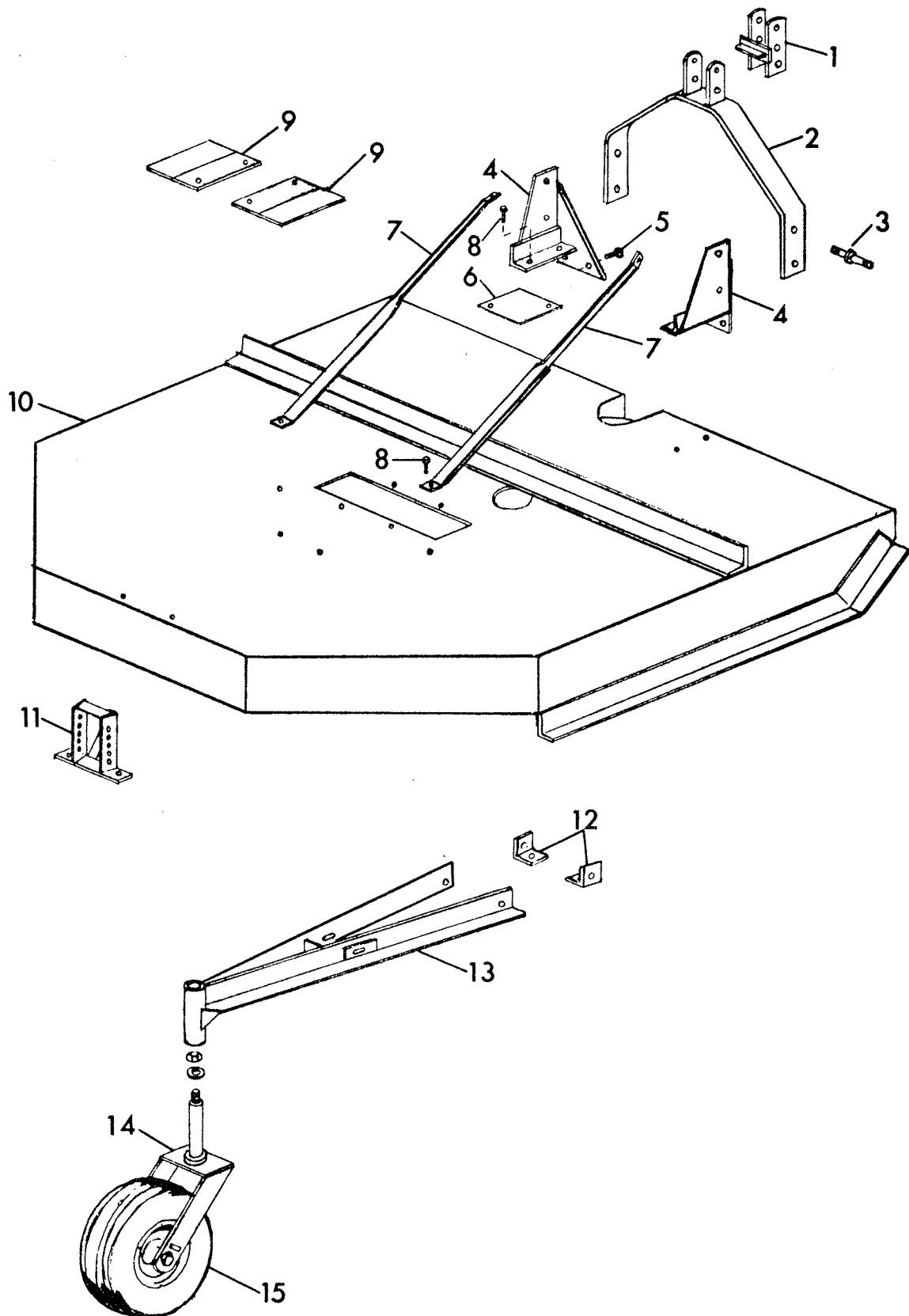
Index No.	Part No.	Description
1	1D-904	Yoke & Flange Assembly
2	1D-905	Tube & Flange Yoke Assembly (540 rpm PTO)
	1D-953	Tube & Flange Yoke Assembly (1,000 rpm PTO)
3	1D-766	Shear Yoke (W-3/8" Bushing)
4	9C-395	Tube & Safety Shear Assembly (540 rpm PTO)
	1D-952	Tube & Safety Shear Assembly (1,000 rpm PTO)
5	9C-390	Shear Flange Assembly (W-3/8" Bushing)
6	1D-239	Capscrew, 5/16-18 NC x 3 Long, Grade 5
7	6C-748	Stover Nut, 5/16-18 NC
8	1C-508	Shear Bolt, 3/8-16 NC x 2-1/2" Long
9	9C-419	Bushing - 3/8"
10	5C-954	Stover Nut, 3/8-16 NC
11	8C-301	Set of 8 Balls
	2D-140	Nylon Bearing
12	8C-302	Retaining Ring (Used With 8 Balls)
	2D-141	Retaining Ring (Used With Nylon Bearing)
*	1D-854	Nylon Centralizer
13	9C-338	Rear Shield Complete (540 rpm PTO)
	3D-677	Rear Shield Complete (1,000 rpm PTO)
14	9C-337	Tube & Yoke Assembly (540 rpm PTO)
	3D-676	Tube & Yoke Assembly (1,000 rpm PTO)
15	5C-515	Universal Joint Repair Kit
16	9C-325	Shaft & Joint Assembly (540 rpm PTO)
	1D-947	Shaft & Joint Assembly (1,000 rpm PTO)
17	9C-394	Front Shield Complete (540 rpm PTO)
	3D-675	Front Shield Complete (1,000 rpm PTO)
18	9C-335	Shaft & Yoke Assembly (540 rpm PTO)
	3D-674	Shaft & Yoke Assembly (1,000 rpm PTO)
19	6C-589	1-3/8 - 6B Spline Tractor Yoke (540 rpm PTO)
	1D-791	1-3/8 - 21 Spline Tractor Yoke (1,000 rpm PTO)
*	8C-528	Capscrew)
*	5D-747	Elastic Stop Nut) Used With 1D-791 Yoke
20	3D-757	Lock Pin)
21	5C-257	Lock Pin Spring) Used With 6C-589 Yoke



UNIVERSAL DRIVE SHAFT
RSSP-726 PICK-UP MODEL

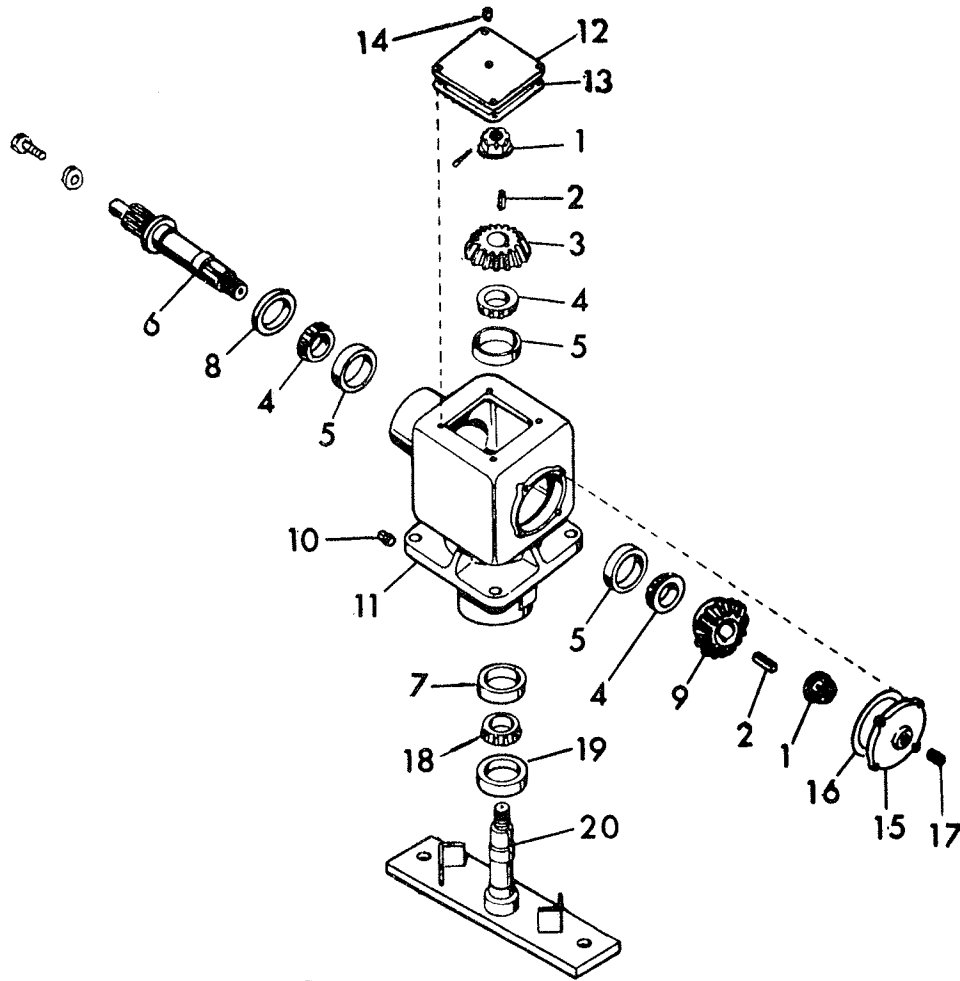
Index No.	Part No.	Description
1	1D-904	Yoke & Flange Assembly
2	1D-911	Tube & Flange Yoke Assembly (540 rpm & 1,000 rpm PTO)
3	1D-766	Shear Yoke (W-3/8" Bushing)
4	9C-919	Tube & Safety Shear Assembly (540 rpm & 1,000 rpm PTO)
5	9C-390	Shear Flange Assembly (W-3/8" Bushing)
6	1D-239	Capscrew, 5/16-18 NC x 3 Long, Grade 5
7	6C-748	Stover Nut, 5/16-18 NC
8	1C-508	Shear Bolt, 3/8-16 NC x 2-1/2" Long
9	9C-419	Bushing - 3/8"
10	5C-954	Stover Nut, 3/8-16 NC
11	8C-301	Set of 8 Balls
	2D-140	Nylon Bearing
12	8C-302	Retaining Ring (Used With 8 Balls)
	2D-141	Retaining Ring (Used With Nylon Bearing)
*	1D-854	Nylon Centralizer
13	3D-679	Rear Shield Complete (540 rpm & 1,000 rpm PTO)
14	3D-678	Tube & Yoke Assembly (540 rpm & 1,000 rpm PTO)
15	5C-515	Universal Joint Repair Kit
16	3D-190	Shaft & Joint Assembly (540 rpm PTO)
	3D-194	Shaft & Joint Assembly (1,000 rpm PTO)
17	3D-214	Front Shield Complete (540 rpm PTO)
	3D-848	Front Shield Complete (1,000 rpm PTO)
18	3D-213	Shaft & Yoke Assembly (540 rpm PTO)
	3D-847	Shaft & Yoke Assembly (1,000 rpm PTO)
19	6C-589	1-3/8 - 6B Spline Tractor Yoke (540 rpm PTO)
	1D-791	1-3/8 - 21 Spline Tractor Yoke (1,000 rpm PTO)
*	8C-528	Capscrew)
*	5D-747	Elastic Stop Nut) Used With 1D-791 Yoke
20	3D-757	Lock Pin)
21	5C-257	Lock Pin Spring) Used With 6C-589 Yoke

PICKUP HOOD & TAILWHEEL ASSEMBLY



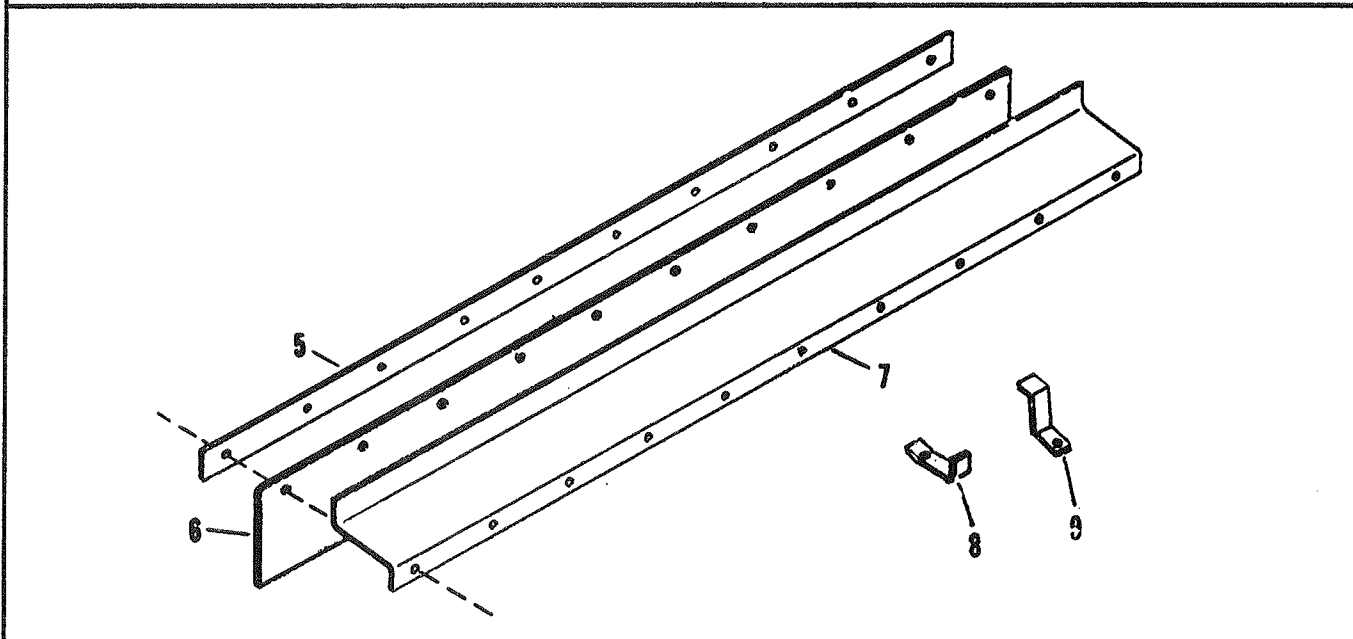
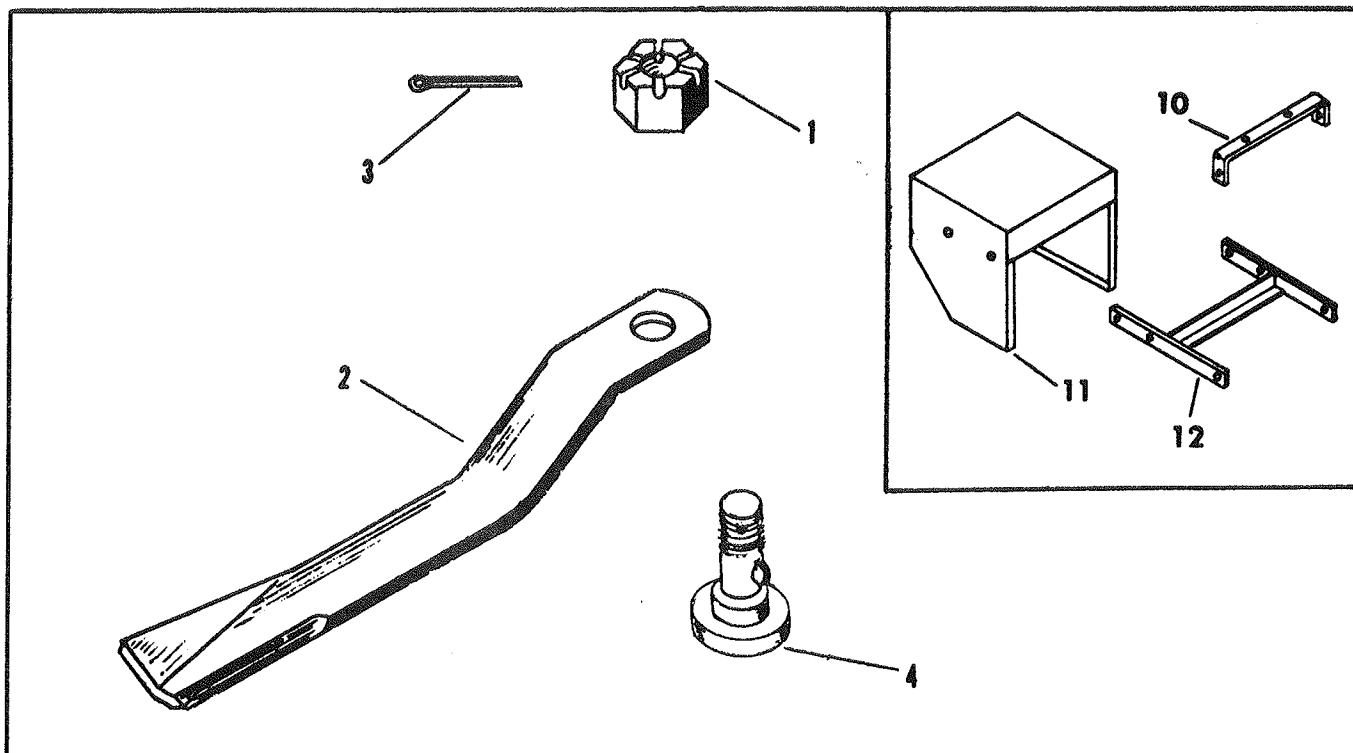
PICK-UP HOOD & TAILWHEEL ASSEMBLY

Index No.	Part No.	Description	Weight
1	5D-666	Float Link (Category I Tractors)	
	6D-159	Float Link (Category II Tractors)	
2	5D-275	Mast Weldment	
	4D-355	Capscrew, 3/4-10 NC x 5-1/2 Long, Grade 5, 1 Req'd.	
	6C-729	Nut, 3/4-10 NC (Stover) 1 Req'd.	
3	5D-186	Hitch Pin (Category I Tractors)	
	1D-217	Hitch Pin (Category II Tractors)	
		Nut, 7/8-14 NF SAE 2 Req'd.	
		Capscrew, 7/8-9 NC x 2" Long 2 Req'd.	
		Lockwasher, 7/8 Med. Spring 4 Req'd.	
		Nut, 7/8-9 NC 2 Req'd.	
4	5D-267	Hitch Sub-Assembly L.H.	
	5D-268	Hitch Sub-Assembly R.H.	
5	1D-237	Capscrew, 1/2-13 NC x 2" Long, Grade 5, 4 Req'd.	
6	4D-893	Cover Plate	
		Capscrew, 5/16-18 NC x 1/2" Long, 1 Req'd.	
		Nut, 5/16-18 NC (Stover), 1 Req'd.	
7	6D-335	Brace, R.H.	7.4
	6D-334	Brace, L.H.	7.4
8	8C-527	Capscrew, 1/2-13 NC x 1-1/2 Long, Grade 5, 6 Req'd.	
		Lockwasher, 1/2 Med. Spring 10 Req'd.	
		Nut, 1/2-13 NC, 10 Req'd.	
9	9C-384	Cover Plate	
		Capscrew, 5/8-18 NF x 2-3/4 Long, 4 Req'd.	
		Lockwasher, 5/8 Med. Spring, 4 Req'd.	
		Nut, 5/8-18 NF, Grade B (Stover), 4 Req'd.	
10	6D-755	Hood Assembly	500.0
11	6C-454	Adjustment Bracket	5.75
12	9C-915	Lug	1.0
	4C-434	Bushing, 7/16" Long, 2 Req'd.	
		Capscrew, 1/2-13 NC x 1-1/2 Long, 8 Req'd.	
		Lockwasher, 1/2 Med. Spring, 4 Req'd.	
		Washer, 1/2 Std. Flat, 2 Req'd.	
		Nut, 1/2-13 NC (Stover), 8 Req'd.	
13	8C-447	Tailwheel Arm Sub-Assembly	41.50
	7C-126	Bushing, 1-1/2 O.D. x 1-1/4 I.D. x 1-1/2 Long	
14	9C-913	Wheel Fork Assembly	15.50
		Washer, 3/4" Std. Flat, 1 Req'd.	
		Nut, 3/4-10 NC (Stover), 1 Req'd.	
	7C-122	Bushing (Machinery), 1-1/4 Shaft x 1-7/8 O.D., 1 Req'd.	
15		<u>Tailwheel Components</u>	
	9C-914	Axle Assembly	2.0
	1D-903	Hub, Rim & Tire Assembly Complete	30.50
	1D-899	4.00 x 8 Laminated Tire & Rim	23.75
	1D-919	Hub (with bearings & seals)	6.25
		Capscrew, 1/2-20 NF x 1" Long, 4 Req'd.	
	1D-924	Spacer (1-1/4 O.D. x 1-5/32" Long)	.1
	1D-925	Spacer (1-1/4 O.D. x 1-11/32" Long)	.2
	1D-902	Hub (less bearings)	5.75
	9C-226	Bearing Cup #L44610	.1
	9C-227	Bearing Cone #L44643	.2
	9C-228	Seal	.1
	9C-223	Axle Nut, 1" - 14 NF (Stover Lock)	.3
		Flat Washer, 1" SAE, 1 Req'd.	



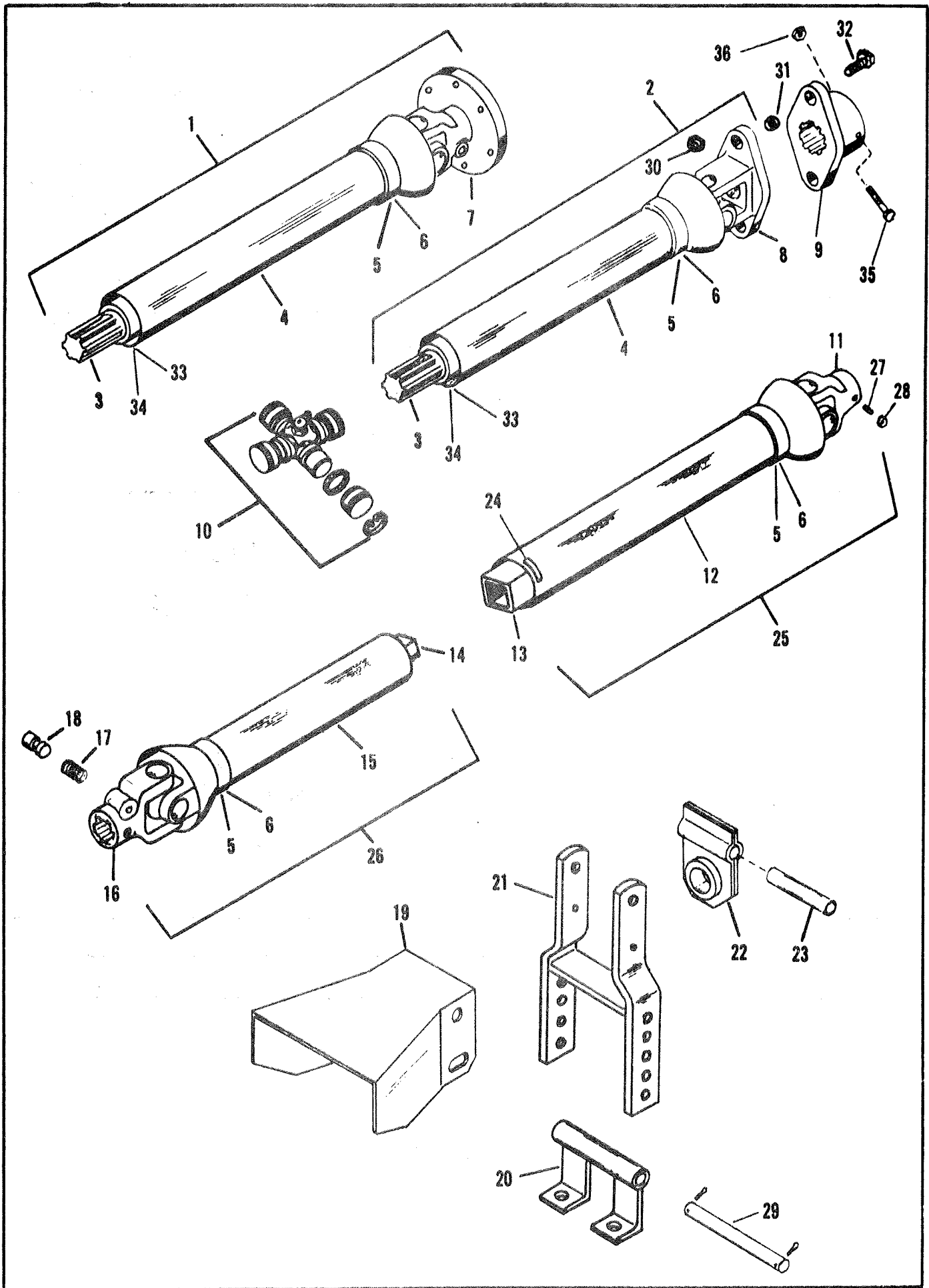
BLADE DRIVE ASSEMBLY

Sym.	Part No.	Description	No. Used
	6D-746	Blade Drive Assembly	
1	1D-373	Flange Nut	2
2	7C-728	Key	4
3	3D-351	Gear - 18T	1
4	7C-763	Bearing Cone (#LM501349)	3
5	7C-762	Bearing Cup (#LM501310)	3
6	1D-102	Input Shaft	1
	1C-120	Washer (Shear Joint)	1
	5C-516	Shear Joint Retaining Screw	1
7	4C-832	Bearing Cup #362A	1
8	7C-764	Seal - 2.125 I. D. x 3.066 O. D. x 11/16	1
9	3D-350	Gear - 24T	1
10	4C-841	Pipe Plug - Allen Head	1
11	4D-186	Gear Box Housing	1
12	2D-914	Cover	1
13	2D-916	Gasket - Cover	1
14	5C-573	Breather Valve	1
15	2D-915	Rear Cap	1
16	2D-917	Gasket - Rear Cap	1
17	4C-840	Pipe Plug - Square Head	1
18	4C-850	Bearing Cone #368	1
19	4C-831	Seal - 2.375 I. D. x 3.505 O. D. x 45/64	1
20	3D-529	Output Spindle Assembly	



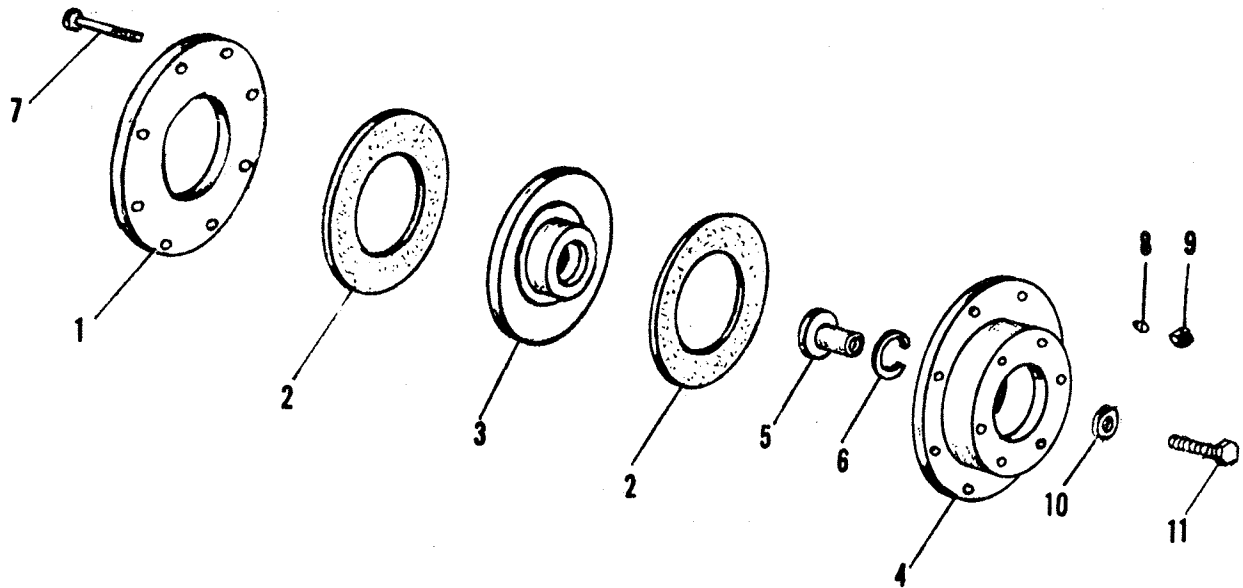
BLADE & SHIELD ASSEMBLIES

Sym.	Part No.	Description
1	8C-609	Slotted Nut, 1-1/8 - 12 NF
2	8C-599	Swinging Blade - R. H.
3	6C-468	Cotter Pin, 3/16 x 2" Long
4	9C-421	Pivot Bolt
5	2D-125	Clamp Strap
6	2D-123	Shield Strip
7	2D-127	Shield Bracket (Drawbar Model)
	2D-191	Shield Bracket (Pick-up Model)
8	2D-187	Bottom Clip
9	2D-183	Top Clip
10	2J-109	Bracket
11	2J-111	Shield
12	2J-110	Bracket Weldment



3 JOINT PTO ASSEMBLY
RSS-726 ROTARY SHREDDER

Index No.	Part No.	Description
1	3D-145	Drive Shaft Assembly (Slip Clutch)
2	3D-106	Drive Shaft Assembly (3/8" Shear Pins)
3	3D-229	Drive Shaft & Yoke Assembly
4	3D-230	Shield Complete
5	2D-140	Nylon Bearing
6	2D-141	Retaining Ring
7	1D-904	Yoke & Flange Assembly
8	1D-766	Shear Yoke (W-3/8" Bushings)
9	9C-390	Shear Flange Assembly (3/8" Bushings)
10	5C-515	Universal Joint Repair Kit
11	8C-315	1-3/8 - 6B Spline Yoke
12	3D-231	Rear Shield Complete
13	3D-232	Tube & Yoke Assembly
14	3D-233	Shaft & Yoke Assembly
15	3D-234	Front Shield Complete
16	6C-589	1-3/8 - 6 Spline Tractor Yoke (540 RPM)
	1D-791	1-3/8 - 21 Spline Tractor Yoke (1,000 RPM)
*	8C-528	Capscrew)
*	5D-747	Elastic Stop Nut) Used With 1D-791 Yoke
17	5C-257	Lock Pin Spring)
18	3D-757	Lock Pin) Used With 6C-589 Yoke
19	3D-105	Center Shield
20	3D-136	Bearing Anchor Assembly
21	3D-135	Support Assembly
22	7C-323	Bearing
23	7C-322	Bearing Sleeve
24	1D-854	Nylon Centralizer
25	3D-107	Tube & Joint Assembly
26	3D-108	Shaft & Joint Assembly (540 RPM)
	3D-147	Shaft & Joint Assembly (1,000 RPM)
27	5C-233	Set Screw
28	5C-234	Jam Nut
29	3D-140	Anchor Pin
30	5C-954	Stover Nut, 3/8-16 NC
31	9C-419	Bushing - 3/8"
32	1C-508	Shear Bolt, 3/8-16 NC x 2-1/2" Long
33	3D-680	Nylon Bearing
34	3D-681	Retaining Ring
35	1D-239	Capscrew, 5/16-18 NC x 3 Long, Grade 5
36	6C-748	Stover Nut, 5/16-18 NC



7-1/2" SLIP CLUTCH ASSEMBLY

Sym.	Part No.	Part Name
	3D-808	Clutch Assembly (Complete)
1	3D-811	Pressure Plate
2	3D-457	Friction Disc-7-1/2" Outside Diameter
3	3D-810	Clutch Hub
4	3D-809	Friction Plate Assembly
5	1D-888	Adapter Sleeve
6	1D-542	Snap Ring
7	1C-508	Capscrew
8	1D-398	Belleville Washer
9	1C-670	Nut (Self locking)
10	1D-889	Retaining Washer
11	5C-516	Capscrew, L. H. Thread