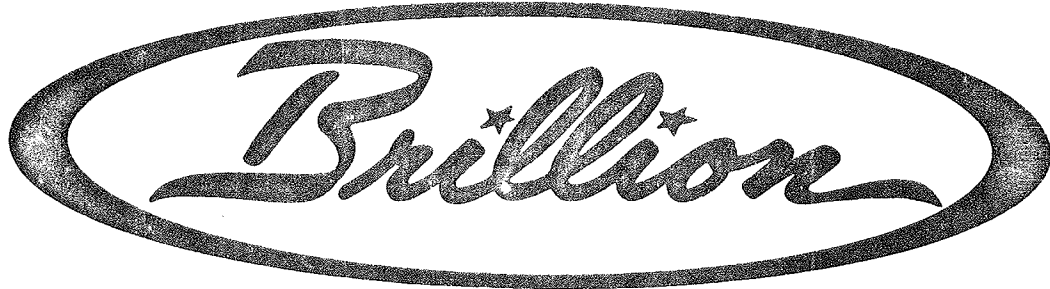


REPAIR PARTS CATALOG

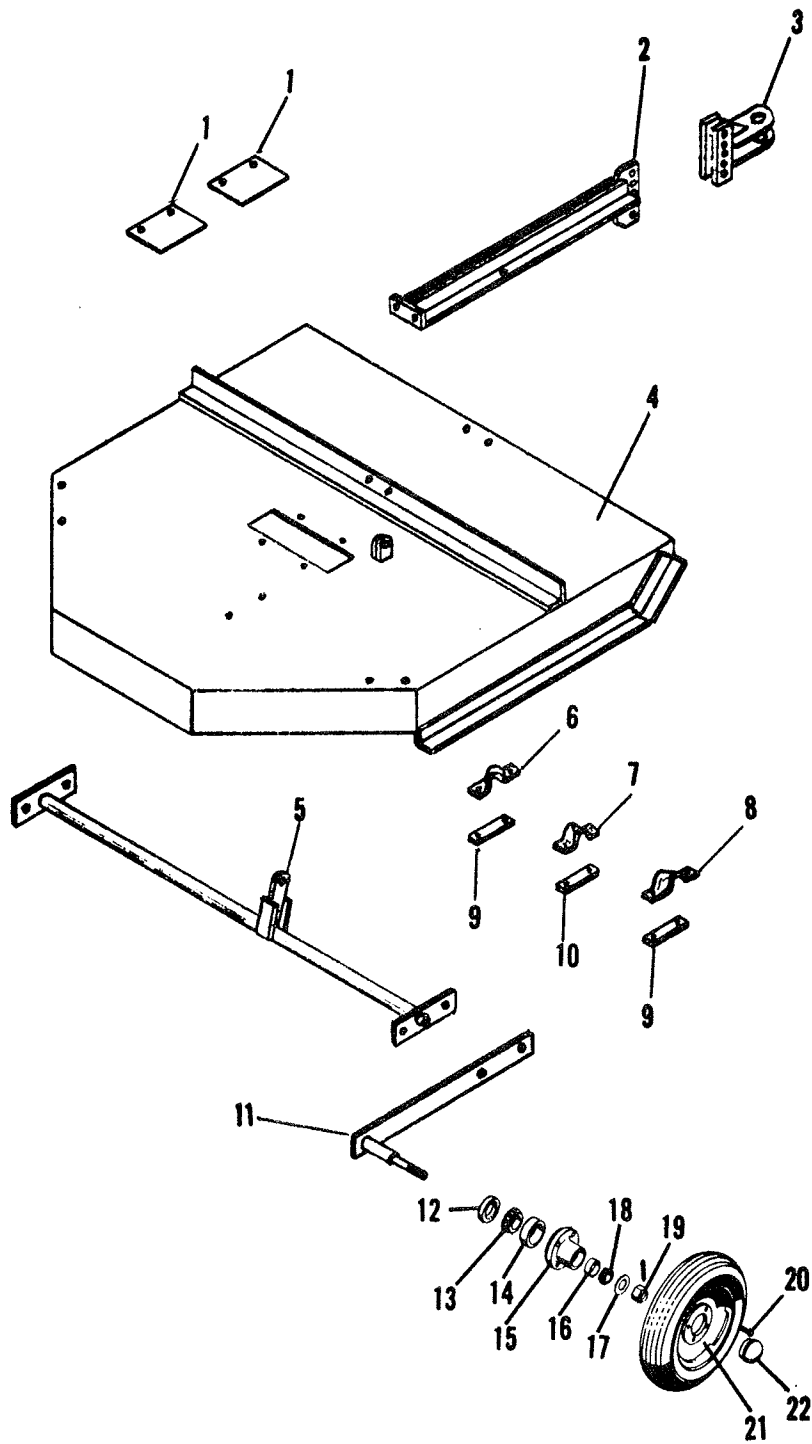


6 FOOT ROTARY SHREDDER

MODELS RSS-6-01 & RSSP-6-01

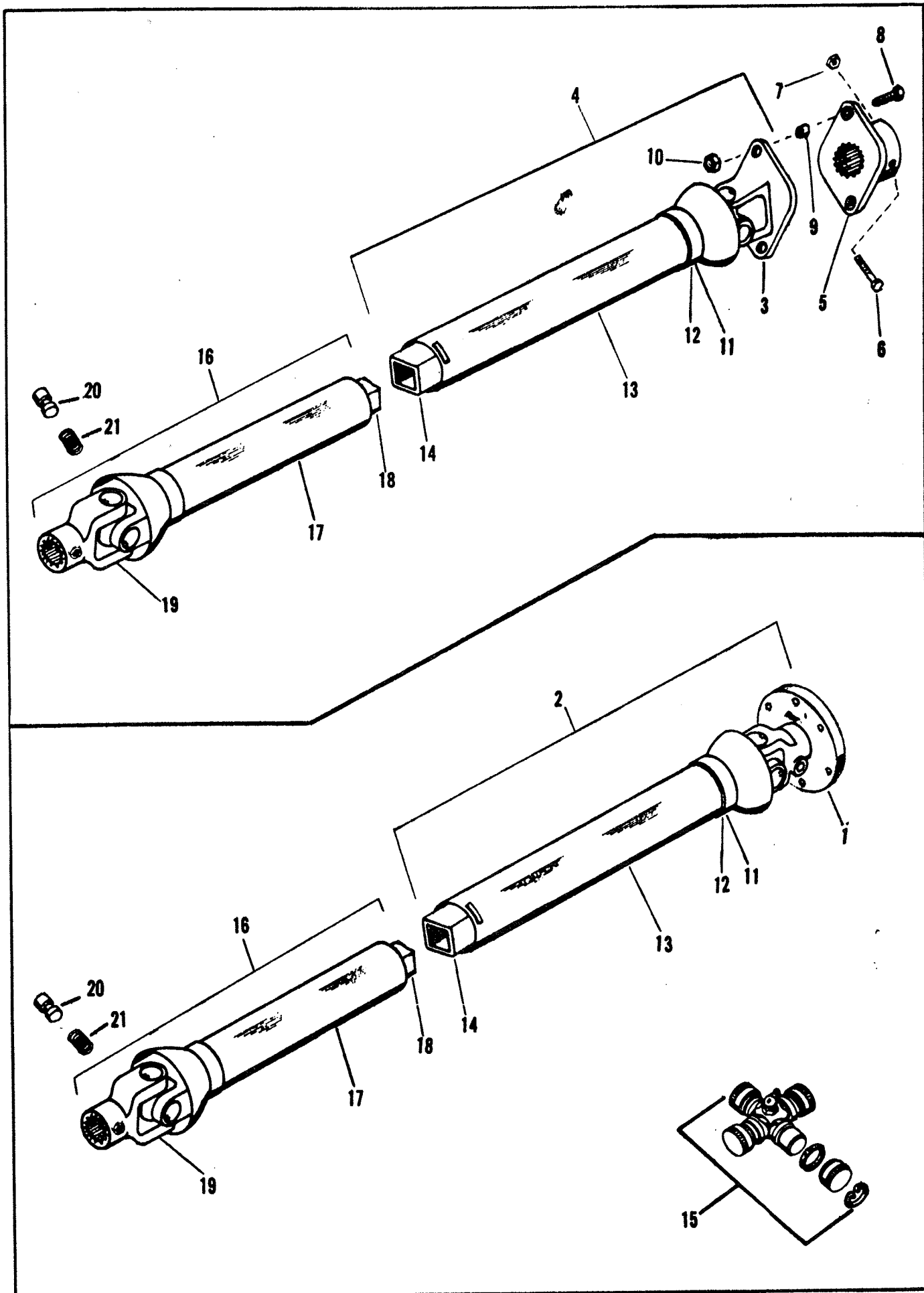
BRILLION IRON WORKS, INC.

Brillion, Wisconsin, U. S. A.



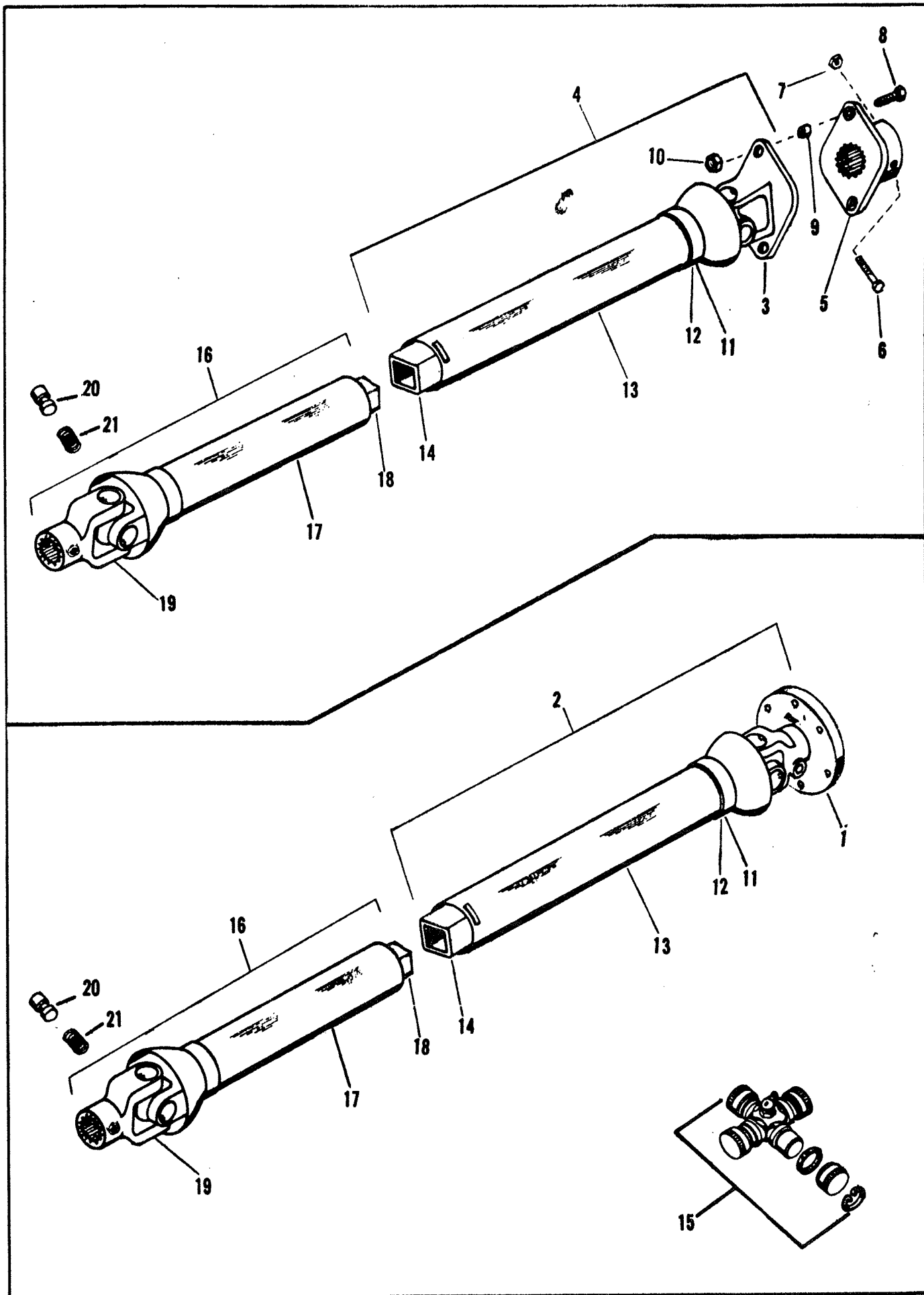
HOOD, DRAWBAR AND AXLE ASSEMBLY

Index No.	Part No.	Description	Pcs. Req'd.
1	9C-384	Cover Plate	2
		Capscrew, 5/8-18 NF x 2-3/4" Long	4
		Lockwasher, 5/8 Med. Spring	6
		Nut, 5/8-18 NF, Grade B Stover	4
2	9C-302	Drawbar	1
3	1D-293	Adjustable Hitch	1
		Capscrew, 5/8-11 NC x 2-1/2 Long	2
		Nut, 5/8-11 NC	2
		Capscrew, 1/2-13 NC x 1-1/2" Long	4
		Nut, 1/2-13 NC	10
		Lockwasher, 1/2" Med. Spring	10
4	6D-758	Hood Assembly	1
5	9C-280	Axle Assembly	1
6	8C-622	L. H. 45° Axle Clamp	1
7	6C-285	Axle Bearing	1
8	8C-623	R. H. 45° Axle Clamp	1
9	8C-624	Axle Clamp Bottom	2
10	6C-593	Axle Bearing Bottom	1
		Capscrew, 1/2-13 NC x 2" Long	6
11	9C-455	Arm & Shaft Assembly	2
12	5C-910	Seal	2
13	5C-913	Bearing Cone	2
14	5C-914	Bearing Cup	2
15	5C-904	Wheel Hub	2
16	5C-912	Bearing Cup	2
17	5C-907	Washer	2
18	5C-911	Bearing Cone	2
19	5C-909	Slotted Nut	2
		Cotter Pin, 5/32 Dia. x 1" Long	2
20	5C-100	Wheel Bolt	8
21	5C-916	Wheel Rim - 15"	
	8C-470	Wheel Rim - 14"	
	1D-900	Laminated Tire & Rim	2
22	5C-908	Cap	2
		Capscrew, 3/4-10 NC x 2-3/4 Long	2
		Nut, 3/4-10 NC	2
		Lockwasher, 3/4 Med. Spring	2



UNIVERSAL DRIVE SHAFT
RSS-6 DRAWBAR MODEL

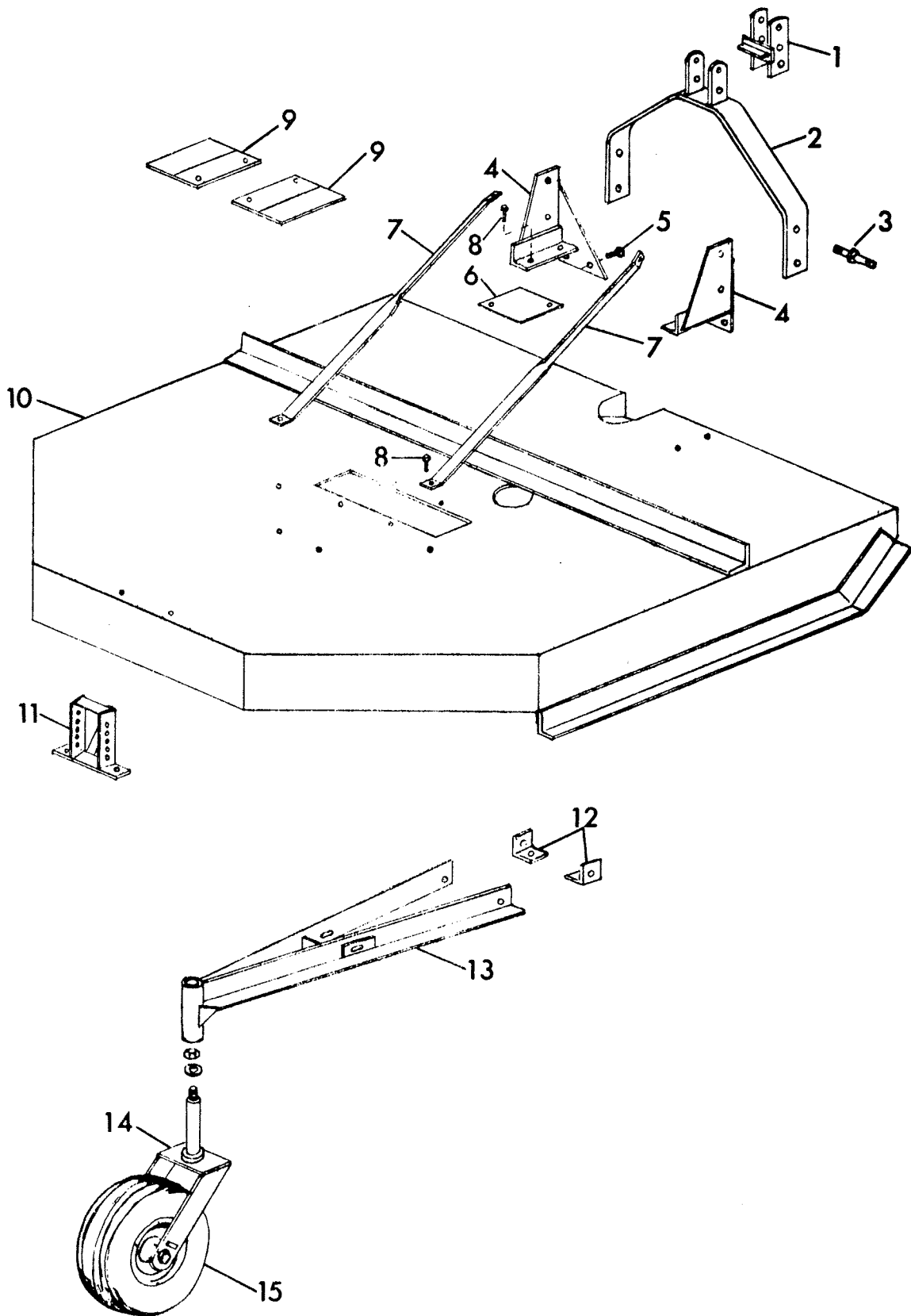
Index No.	Part No.	Description
1	1D-904	Yoke & Flange Assembly
2	1D-905	Tube & Flange Yoke Assembly (540 rpm PTO)
	1D-953	Tube & Flange Yoke Assembly (1,000 rpm PTO)
3	1D-766	Shear Yoke (W-3/8" Bushing)
4	9C-395	Tube & Safety Shear Assembly (540 rpm PTO)
	1D-952	Tube & Safety Shear Assembly (1,000 rpm PTO)
5	9C-390	Shear Flange Assembly (W-3/8" Bushing)
6	1D-239	Capscrew, 5/16-18 NC x 3 Long, Grade 5
7	6C-748	Stover Nut, 5/16-18 NC
8	1C-508	Shear Bolt, 3/8-16 NC x 2-1/2" Long
9	9C-419	Bushing - 3/8"
10	5C-954	Stover Nut, 3/8-16 NC
11	8C-301	Set of 8 Balls
	2D-140	Nylon Bearing
12	8C-302	Retaining Ring (Used With 8 Balls)
	2D-141	Retaining Ring (Used With Nylon Bearing)
*	1D-854	Nylon Centralizer
13	9C-338	Rear Shield Complete (540 rpm PTO)
	3D-677	Rear Shield Complete (1,000 rpm PTO)
14	9C-337	Tube & Yoke Assembly (540 rpm PTO)
	3D-676	Tube & Yoke Assembly (1,000 rpm PTO)
15	5C-515	Universal Joint Repair Kit
16	9C-325	Shaft & Joint Assembly (540 rpm PTO)
	1D-947	Shaft & Joint Assembly (1,000 rpm PTO)
17	9C-394	Front Shield Complete (540 rpm PTO)
	3D-675	Front Shield Complete (1,000 rpm PTO)
18	9C-335	Shaft & Yoke Assembly (540 rpm PTO)
	3D-674	Shaft & Yoke Assembly (1,000 rpm PTO)
19	6C-589	1-3/8 - 6B Spline Tractor Yoke (540 rpm PTO)
	1D-791	1-3/8 - 21 Spline Tractor Yoke (1,000 rpm PTO)
*	8C-528	Capscrew)
*	5D-747	Elastic Stop Nut) Used With 1D-791 Yoke
20	3D-757	Lock Pin)
21	5C-257	Lock Pin Spring) Used With 6C-589 Yoke



UNIVERSAL DRIVE SHAFT
RSSP-6 PICK-UP MODEL

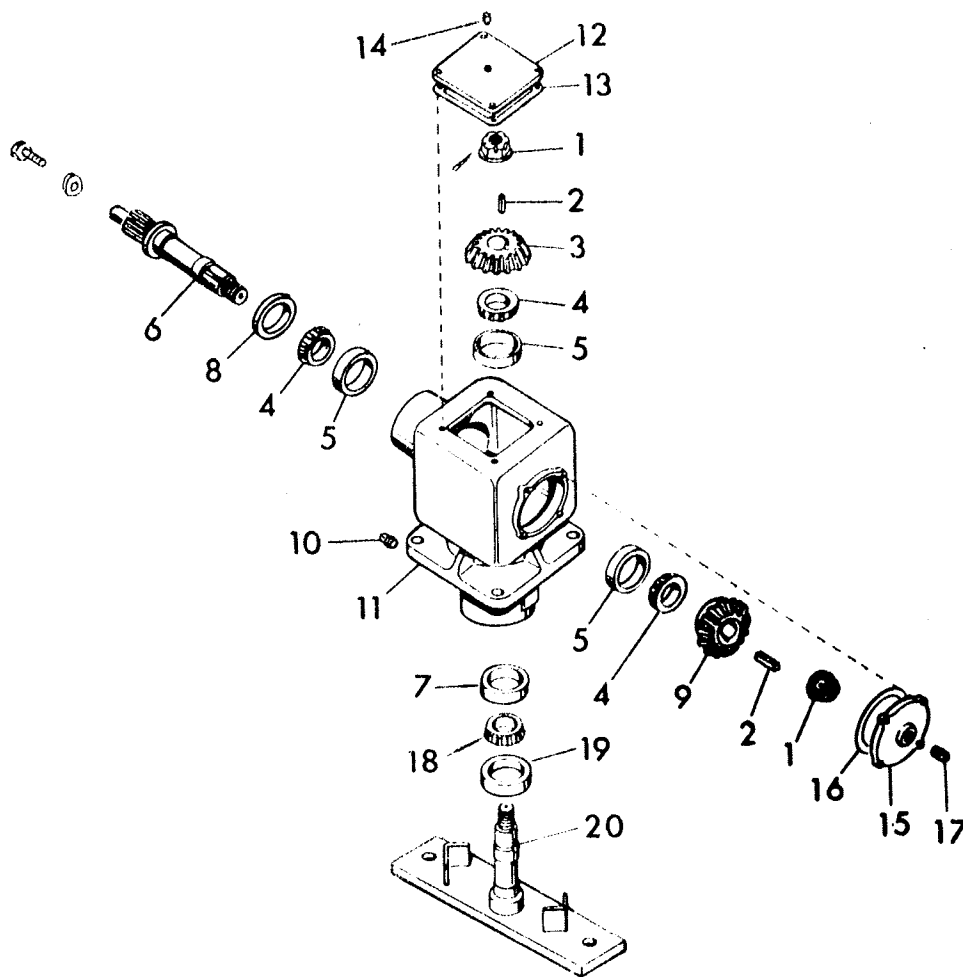
Index No.	Part No.	Description
1	1D-904	Yoke & Flange Assembly
2	1D-911	Tube & Flange Yoke Assembly (540 rpm & 1,000 rpm PTO)
3	1D-766	Shear Yoke (W-3/8" Bushing)
4	9C-919	Tube & Safety Shear Assembly (540 rpm & 1,000 rpm PTO)
5	9C-390	Shear Flange Assembly (W-3/8" Bushing)
6	1D-239	Capscrew, 5/16-18 NC x 3 Long, Grade 5
7	6C-748	Stover Nut, 5/16-18 NC
8	1C-508	Shear Bolt, 3/8-16 NC x 2-1/2" Long
9	9C-419	Bushing - 3/8"
10	5C-954	Stover Nut, 3/8-16 NC
11	8C-301	Set of 8 Balls
	2D-140	Nylon Bearing
12	8C-302	Retaining Ring (Used With 8 Balls)
	2D-141	Retaining Ring (Used With Nylon Bearing)
*	1D-854	Nylon Centralizer
13	3D-679	Rear Shield Complete (540 rpm & 1,000 rpm PTO)
14	3D-678	Tube & Yoke Assembly (540 rpm & 1,000 rpm PTO)
15	5C-515	Universal Joint Repair Kit
16	3D-190	Shaft & Joint Assembly (540 rpm PTO)
	3D-194	Shaft & Joint Assembly (1,000 rpm PTO)
17	3D-214	Front Shield Complete (540 rpm PTO)
	3D-848	Front Shield Complete (1,000 rpm PTO)
18	3D-213	Shaft & Yoke Assembly (540 rpm PTO)
	3D-847	Shaft & Yoke Assembly (1,000 rpm PTO)
19	6C-589	1-3/8 - 6B Spline Tractor Yoke (540 rpm PTO)
	1D-791	1-3/8 - 21 Spline Tractor Yoke (1,000 rpm PTO)
*	8C-528	Capscrew) Used With 1D-791 Yoke
*	5D-747	Elastic Stop Nut)
20	3D-757	Lock Pin) Used With 6C-589 Yoke
21	5C-257	Lock Pin Spring)

PICKUP HOOD & TAILWHEEL ASSEMBLY



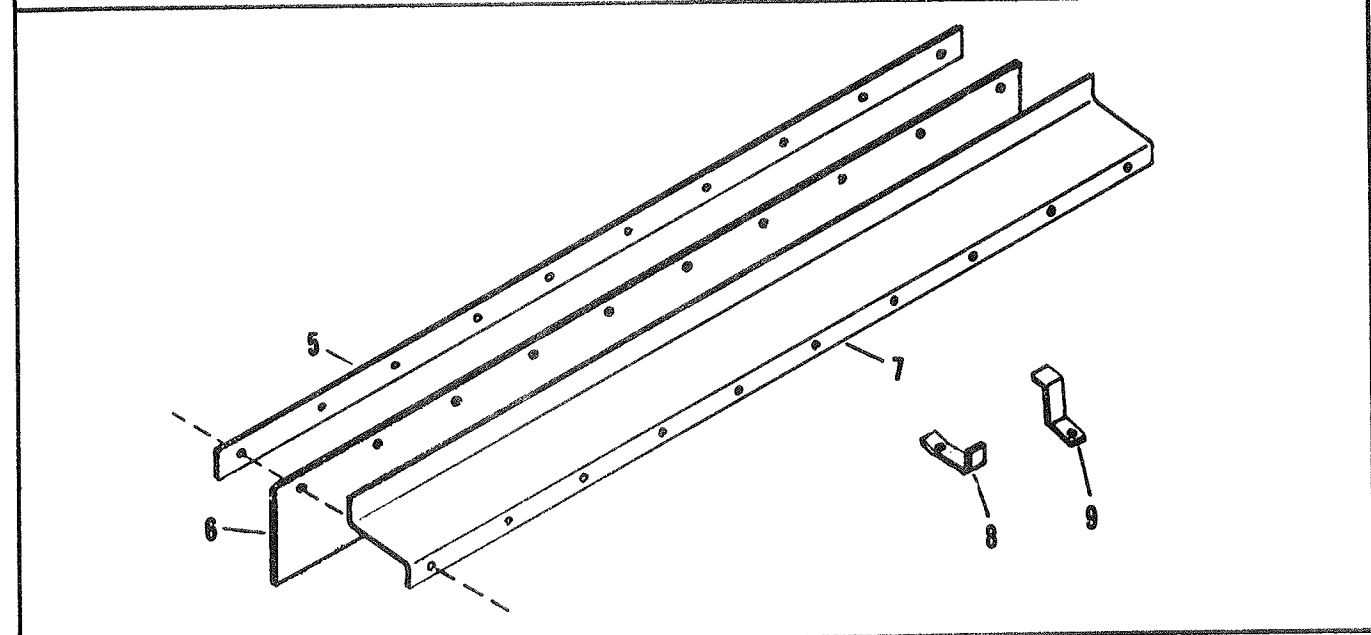
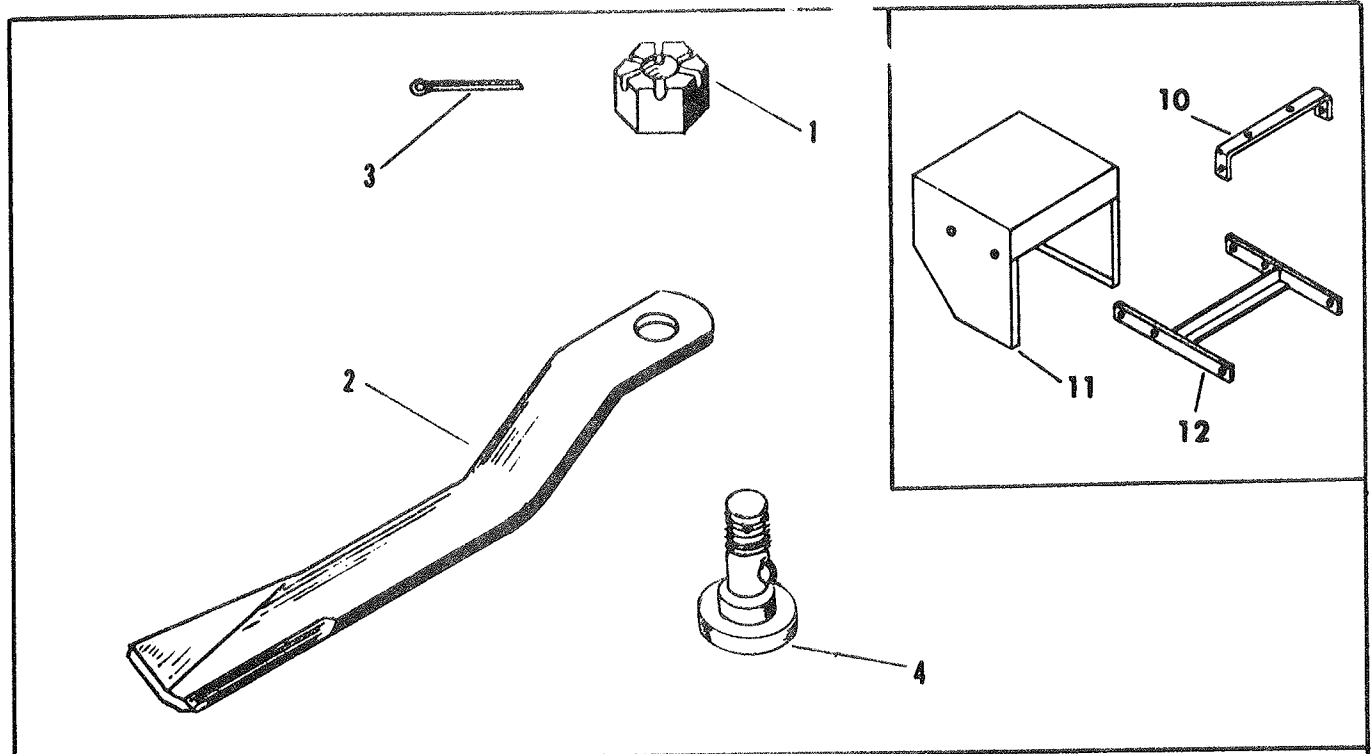
PICK-UP HOOD & TAILWHEEL ASSEMBLY

Index No.	Part No.	Description	Weight
1	5D-666	Float Link (Category I Tractors)	
	6D-159	Float Link (Category II Tractors)	
2	5D-275	Mast Weldment	
	4D-355	Capscrew, 3/4-10 NC x 5-1/2 Long, Grade 5, 1 Req'd.	
	6C-729	Nut, 3/4-10 NC (Stover) 1 Req'd.	
3	5D-186	Hitch Pin (Category I Tractors)	
	1D-217	Hitch Pin (Category II Tractors)	
		Nut, 7/8-14 NF SAE 2 Req'd.	
		Capscrew, 7/8-9 NC x 2" Long 2 Req'd.	
		Lockwasher, 7/8 Med. Spring 4 Req'd.	
		Nut, 7/8-9 NC 2 Req'd.	
4	5D-267	Hitch Sub-Assembly L. H.	
	5D-268	Hitch Sub-Assembly R. H.	
5	1D-237	Capscrew, 1/2-13 NC x 2" Long, Grade 5, 4 Req'd.	
6	4D-893	Cover Plate	
		Capscrew, 5/16-18 NC x 1/2" Long, 1 Req'd.	
		Nut, 5/16-18 NC (Stover), 1 Req'd.	
7	6D-335	Brace, R. H.	7.4
	6D-334	Brace, L. H.	7.4
8	8C-527	Capscrew, 1/2-13 NC x 1-1/2 Long, Grade 5, 6 Req'd.	
		Lockwasher, 1/2 Med. Spring, 10 Req'd.	
		Nut, 1/2-13 NC, 10 Req'd.	
9	9C-384	Cover Plate	
		Capscrew, 5/8-18 NF x 2-3/4 Long, 4 Req'd.	
		Lockwasher, 5/8 Med. Spring, 4 Req'd.	
		Nut, 5/8-18 NF, Grade B (Stover), 4 Req'd.	
10	6D-755	Hood Assembly	500.0
11	6C-454	Adjustment Bracket	5.75
12	9C-915	Lug	1.0
	4C-434	Bushing, 7/16" Long, 2 Req'd.	
		Capscrew, 1/2-13 NC x 1-1/2 Long, 8 Req'd.	
		Lockwasher, 1/2 Med. Spring, 4 Req'd.	
		Washer, 1/2 Std. Flat, 2 Req'd.	
		Nut, 1/2-13 NC (Stover), 8 Req'd.	
13	8C-447	Tailwheel Arm Sub Assembly	41.50
	7C-126	Bushing, 1-1/2 O. D. x 1-1/4 I. D. x 1-1/2 Long	
14	9C-913	Wheel Fork Assembly	15.50
		Washer, 3/4" Std. Flat, 1 Req'd.	
		Nut, 3/4-10 NC (Stover), 1 Req'd.	
	7C-122	Bushing (Machinery), 1-1/4 Shaft x 1-7/8 O. D., 1 Req'd.	
15		<u>Tailwheel Components</u>	
	9C-914	Axle Assembly	2.0
	1D-903	Hub, Rim & Tire Assembly Complete	30.50
	1D-899	4.00 x 8 Laminated Tire & Rim	23.75
	1D-919	Hub (with bearings & seals)	6.25
		Capscrew, 1/2-20 NF x 1" Long, 4 Req'd.	
	1D-924	Spacer (1-1/4 O. D. x 1-5/32" Long)	.1
	1D-925	Spacer (1-1/4 O. D. x 1-11/32" Long)	.2
	1D-902	Hub (less bearings)	5.75
	9C-226	Bearing Cup #L44610	.1
	9C-227	Bearing Cone #L44643	.2
	9C-228	Seal	.1
	9C-223	Axle Nut, 1" - 14 NF (Stover Lock)	.3
		Flat Washer, 1" SAE, 1 Req'd.	



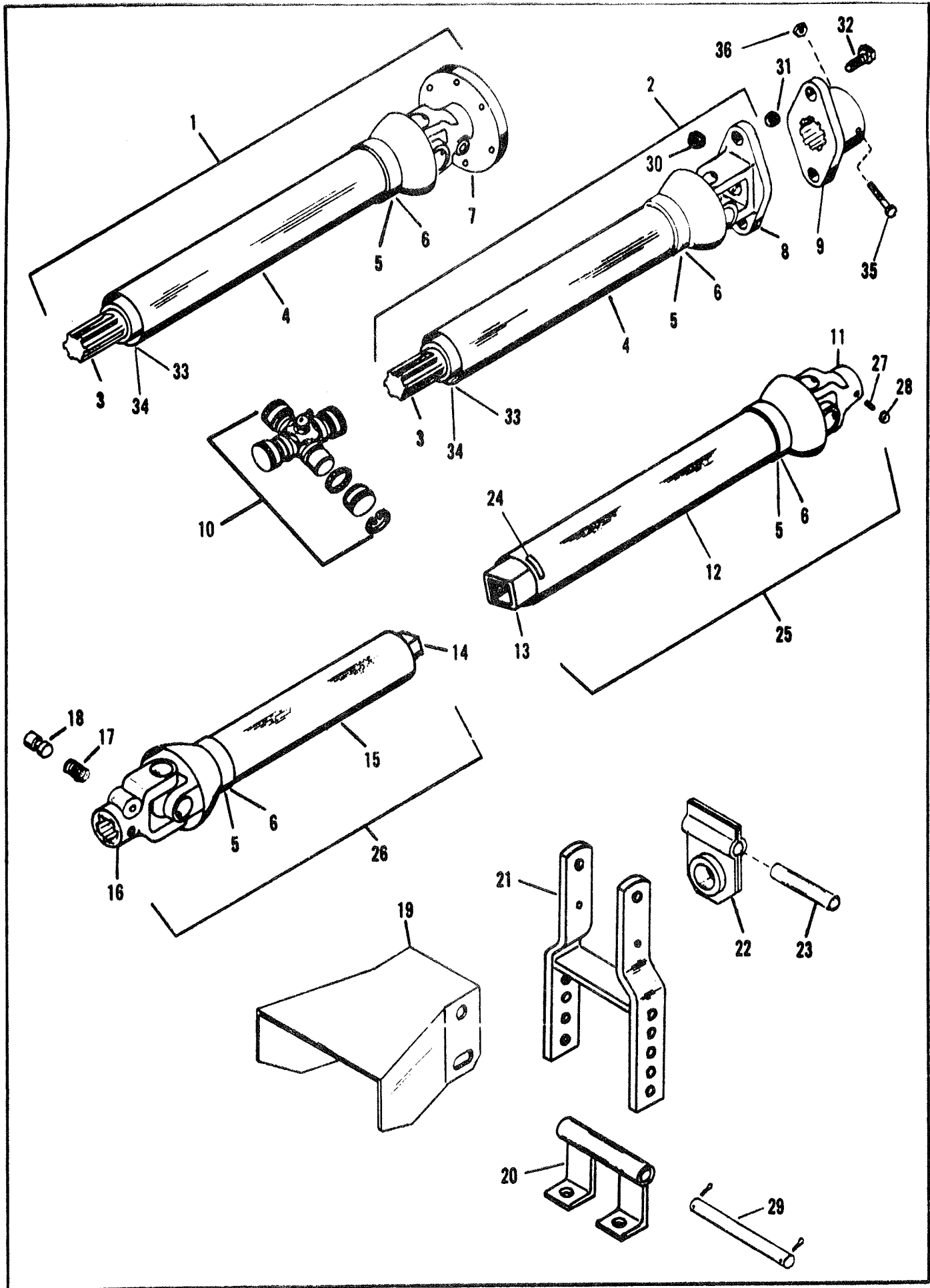
BLADE DRIVE ASSEMBLY

Sym.	Part No.	Description	No. Used
	6D-746	Blade Drive Assembly	2
1	1D-373	Flange Nut	4
2	7C-728	Key	1
3	3D-351	Gear - 18T	3
4	7C-763	Bearing Cone (#LM501349)	3
5	7C-762	Bearing Cup (#LM501310)	1
6	1D-102	Input Shaft	1
	1C-120	Washer (Shear Joint)	1
	5C-516	Shear Joint Retaining Screw	1
7	4C-832	Bearing Cup #362A	1
8	7C-764	Seal - 2.125 I. D. x 3.066 O. D. x 11/16	1
9	3D-350	Gear - 24T	1
10	4C-841	Pipe Plug - Allen Head	1
11	4D-186	Gear Box Housing	1
12	2D-914	Cover	1
13	2D-916	Gasket - Cover	1
14	5C-573	Breather Valve	1
15	2D-915	Rear Cap	1
16	2D-917	Gasket - Rear Cap	1
17	4C-840	Pipe Plug - Square Head	1
18	4C-850	Bearing Cone #368	1
19	4C-831	Seal - 2.375 I. D. x 3.505 O. D. x 45/64	1
20	3D-529	Output Spindle Assembly	



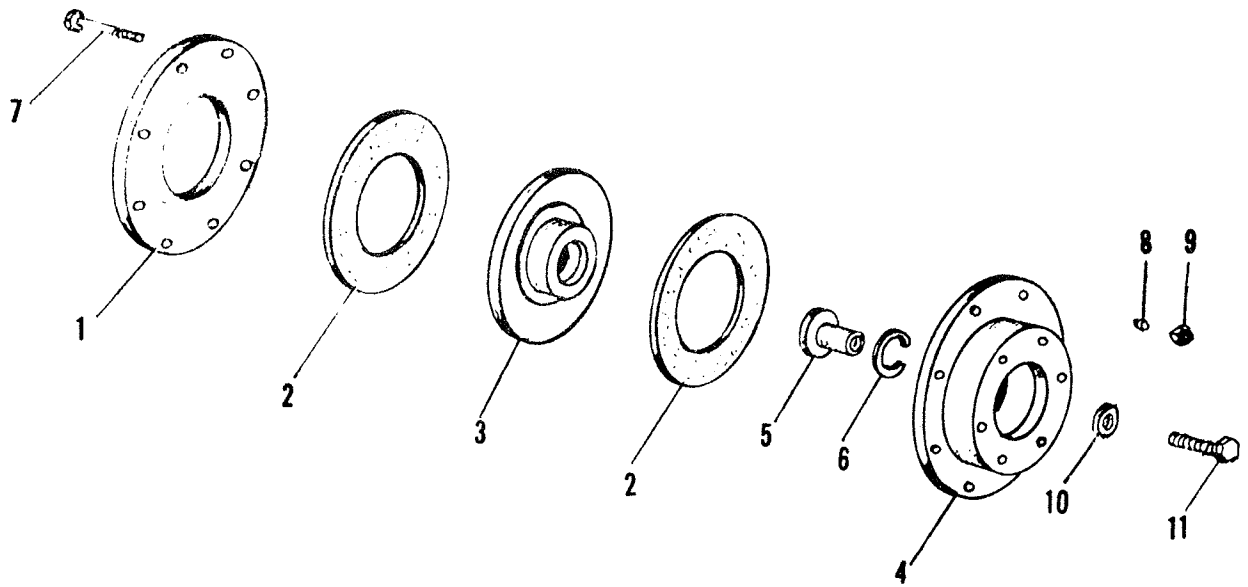
BLADE & SHIELD ASSEMBLIES

Sym.	Part No.	Description
1	8C-609	Slotted Nut, 1-1/8 - 12 NF
2	8C-599	Swinging Blade - R. H.
3	6C-468	Cotter Pin, 3/16 x 2" Long
4	9C-421	Pivot Bolt
5	2D-125	Clamp Strap
6	2D-123	Shield Strip
7	2D-127	Shield Bracket (Drawbar Model)
	2D-191	Shield Bracket (Pick-up Model)
8	2D-187	Bottom Clip
9	2D-188	Top Clip
10	2J-109	Bracket
11	2J-111	Shield
12	2J-110	Bracket Weldment



3 JOINT PTO ASSEMBLY
RSS-6 ROTARY SHREDDER

Index No.	Part No.	Description
1	3D-145	Drive Shaft Assembly (Slip Clutch)
2	3D-106	Drive Shaft Assembly (3/8" Shear Pins)
3	3D-229	Drive Shaft & Yoke Assembly
4	3D-230	Shield Complete
5	2D-140	Nylon Bearing
6	2D-141	Retaining Ring
7	1D-904	Yoke & Flange Assembly
8	1D-766	Shear Yoke (W-3/8" Bushings)
9	9C-390	Shear Flange Assembly (3/8" Bushings)
10	5C-515	Universal Joint Repair Kit
11	8C-315	1-3/8 - 6B Spline Yoke
12	3D-231	Rear Shield Complete
13	3D-232	Tube & Yoke Assembly
14	3D-233	Shaft & Yoke Assembly
15	3D-234	Front Shield Complete
16	6C-589	1-3/8 - 6 Spline Tractor Yoke (540 RPM)
	1D-791	1-3/8 - 21 Spline Tractor Yoke (1,000 RPM)
*	8C-528	Capscrew)
*	5D-747	Elastic Stop Nut) Used With 1D-791 Yoke
17	5C-257	Lock Pin Spring)
18	3D-757	Lock Pin) Used With 6C-589 Yoke
19	3D-105	Center Shield
20	3D-136	Bearing Anchor Assembly
21	3D-135	Support Assembly
22	7C-323	Bearing
23	7C-322	Bearing Sleeve
24	1D-854	Nylon Centralizer
25	3D-107	Tube & Joint Assembly
26	3D-108	Shaft & Joint Assembly (540 RPM)
	3D-147	Shaft & Joint Assembly (1,000 RPM)
27	5C-233	Set Screw
28	5C-234	Jam Nut
29	3D-140	Anchor Pin
30	5C-954	Stover Nut, 3/8-16 NC
31	9C-419	Bushing - 3/8"
32	1C-508	Shear Bolt, 3/8-16 NC x 2-1/2" Long
33	3D-680	Nylon Bearing
34	3D-681	Retaining Ring
35	1D-239	Capscrew, 5/16-18 NC x 3 Long, Grade 5
36	6C-748	Stover Nut, 5/16-18 NC



7-1/2" SLIP CLUTCH ASSEMBLY

Sym.	Part No.	Part Name
	3D-808	Clutch Assembly (Complete)
1	3D-811	Pressure Plate
2	3D-457	Friction Disc-7-1/2" Outside Diameter
3	3D-810	Clutch Hub
4	3D-809	Friction Plate Assembly
5	1D-888	Adapter Sleeve
6	1D-542	Snap Ring
7	1C-508	Capscrew
8	1D-398	Belleville Washer
9	1C-670	Nut (Self locking)
10	1D-889	Retaining Washer
11	5C-516	Capscrew, L. H. Thread