

REPAIR PARTS CATALOG



MODELS

RSPA-60

RSPB-60

RS3-60

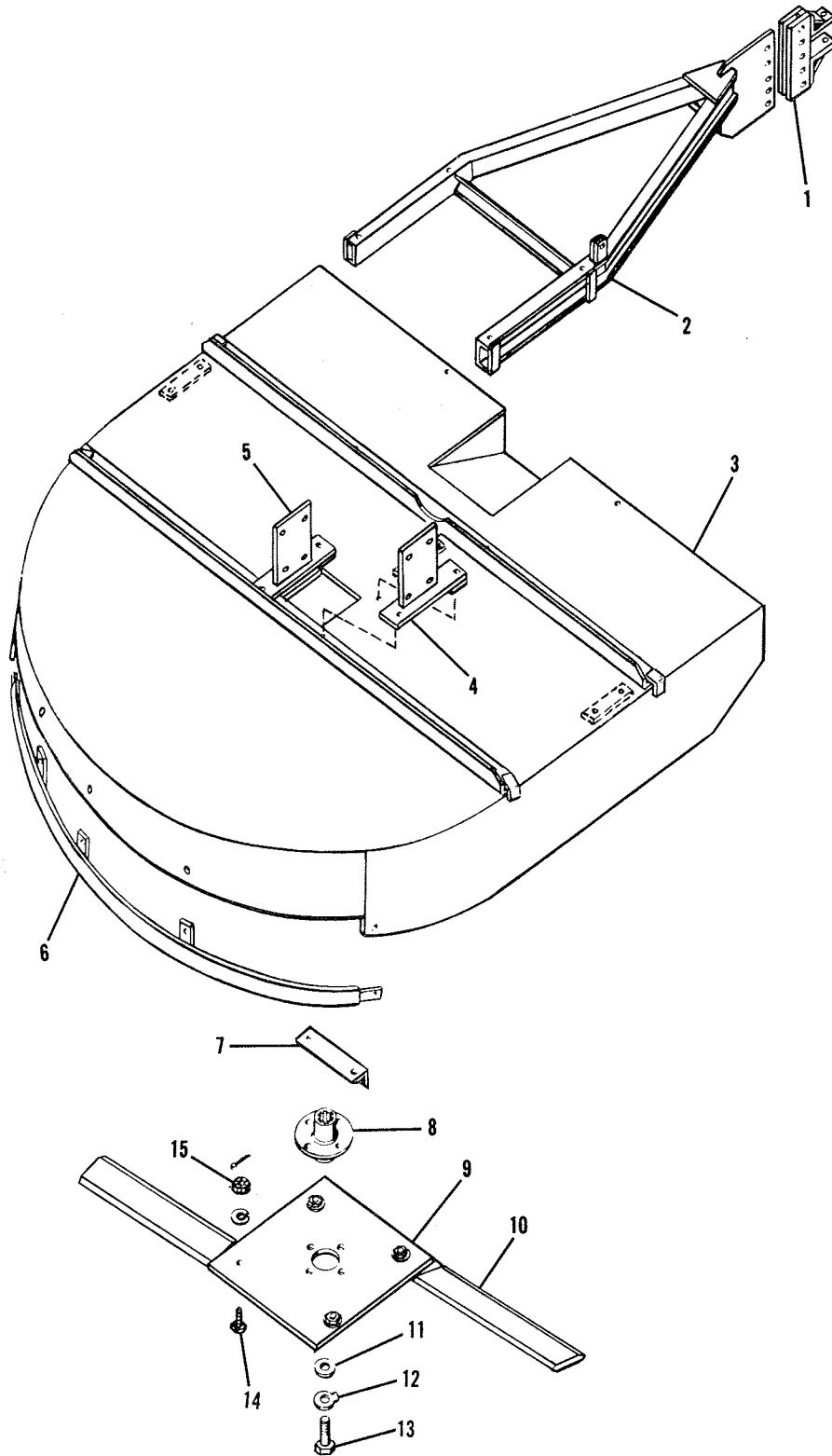
RS-60

60" ROTARY SHREDDER

ALL PARTS NOT LISTED ARE STANDARD HARDWARE

BRILLION IRON WORKS, INC.
BRILLION, WISCONSIN

DRAWBAR, COVER PLATE & BLADE ASSEMBLY

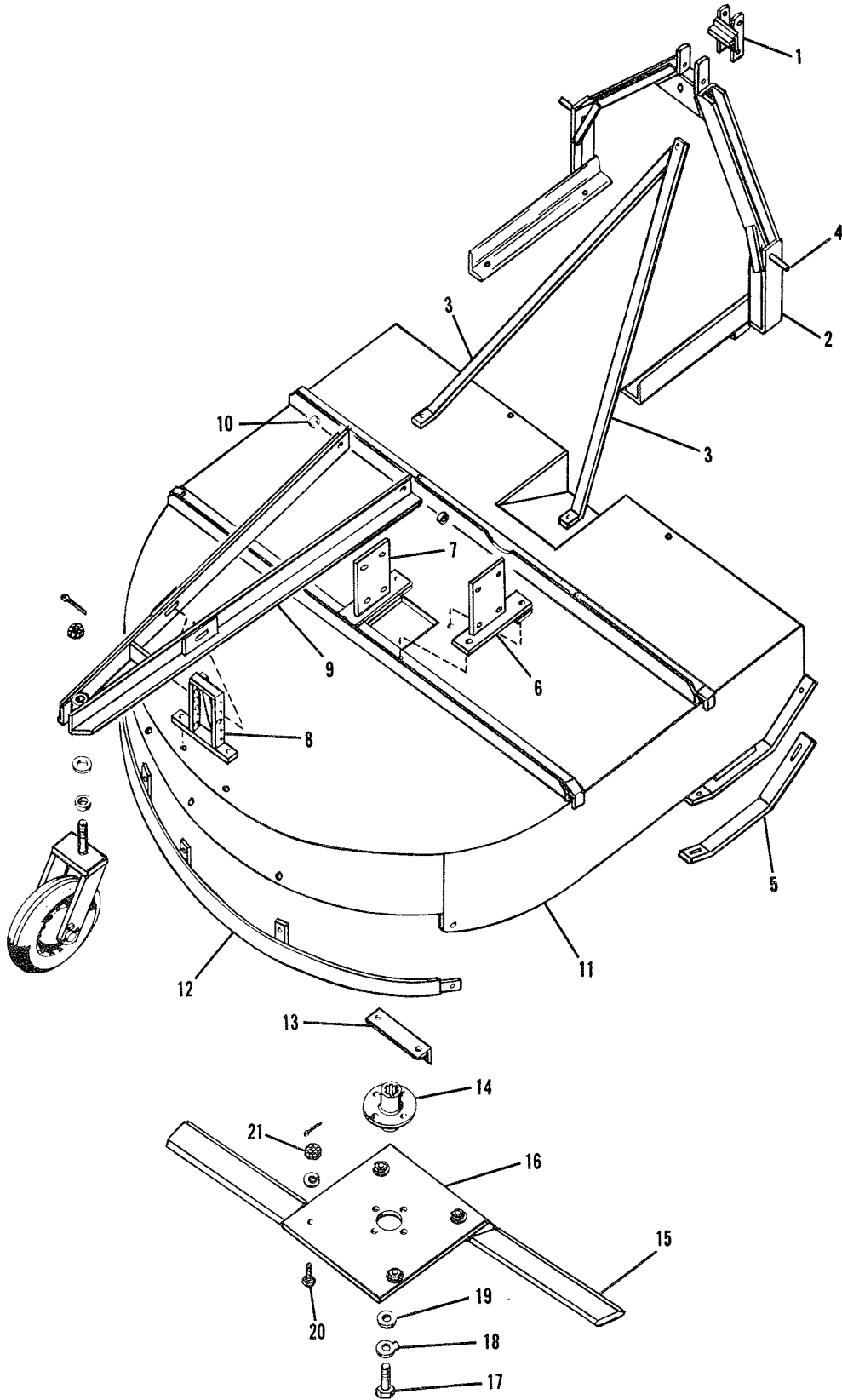


6C-727

DRAWBAR, COVER PLATE & BLADE ASSEMBLY

Index No.	Part No.	Part Name	Weight
1	4C-757	Adjustable Hitch Plate Assembly	8.0
2	6C-601	Drawbar Assembly	
3	6C-603	Cover Plate Assembly	
4	6C-472	R.H. Upper Mounting Bracket	
5	6C-471	L.H. Upper Mounting Bracket	
6	6C-491	Lower Rear Plate Assembly	
7	6C-470	Lower Mounting Angle	2.6
8	6C-477	Hub	
9	6C-476	Blade Mounting Plate Assembly	36.1
10	4C-973	Blade	17.5
11	6C-434	Washer	
12	6C-507	Locking Washer	
13	6C-435	Bolt L.H. Thread	
14	4C-853	Bolt	
15	1C-379	Nut	

PICKUP, COVER PLATE & BLADE ASSEMBLY



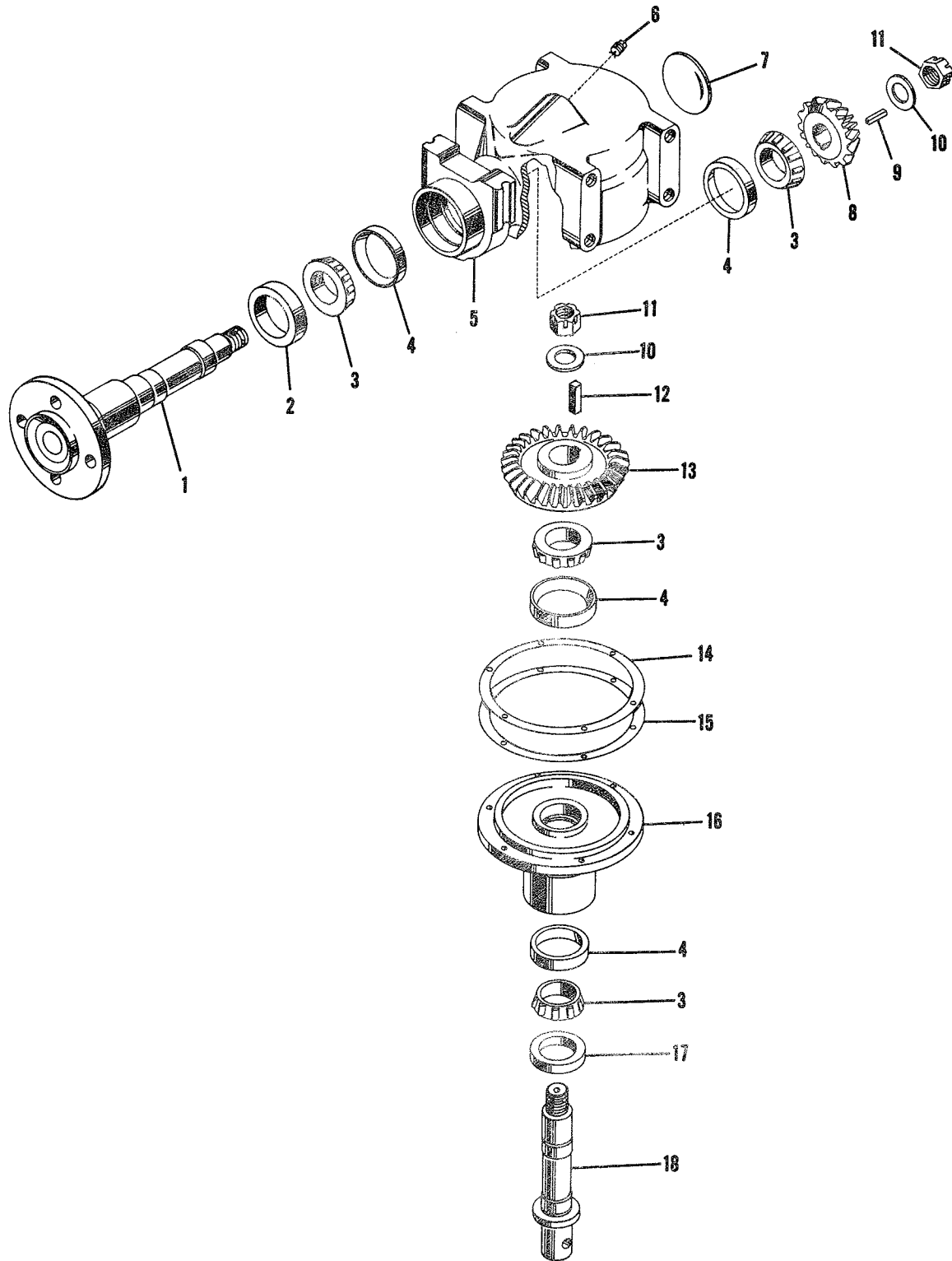
6C-727

PICK UP, COVER PLATE & BLADE ASSEMBLY

Index No.	Part No.		Weight
1	5C-442	Float Link	4.6
2	6C-444	3-Point Pickup F frame	
3	6C-449	Frame Brace	
4	5C-443	Hitch Pin	.7
5	6C-486	Skid Shoe	
6	6C-472	R. H. Upper Mounting Bracket	2.9
7	6C-471	L. H. Upper Mounting Bracket	
8	6C-454	Adjustment Bracket	17.5
9	6C-582	Height Adjustment Arm Assembly	
10	6C-458	Spacer	
11	6C-436	Cover Plate Assembly	
12	6C-491	Lower Rear Plate Assembly	
13	6C-470	Lower Mounting Angle	
14	6C-477	Hub	
15	4C-973	Blade	
16	6C-476	Blade Mounting Plate Assembly	
17	6C-435	Bolt L. H. Thread	
18	6C-507	Locking Washer	
19	6C-434	Washer	
20	4C-853	Bolt	
21	1C-379	Nut	

GEAR BOX ASSEMBLY 7C-734

Used on machines beginning with serial # RSP60-1301 & RS60-1401

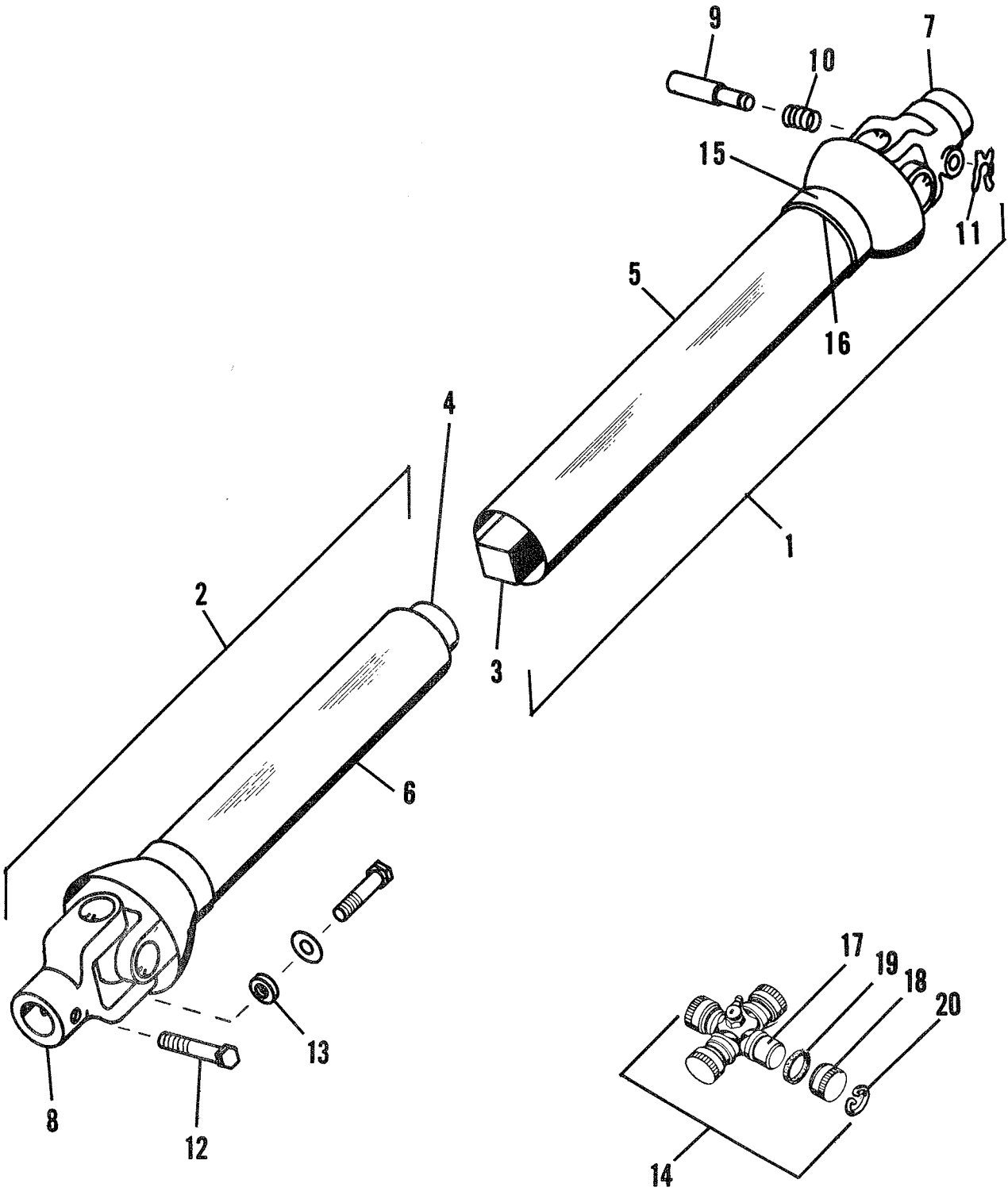


5C-727

GEAR BOX ASSEMBLY

Index No.	Part No.	Part Name	Weight
	7C-734	Drive Assembly Complete	68.0
1	7C-735	Output Shaft	10.6
2	7C-764	Seal	
3	7C-763	(Output Shaft) Cone Timken #LM501349	.2
	5C-480	(Input Shaft) Cone Timken #LM48548	.2
4	7C-762	(Output Shaft) Cup Timken #LM501310	.2
	5C-479	(Input Shaft) Cup Timken #LM48510	.2
5	7C-765	Drive Housing	35.0
6	7C-732	Breather Assembly	
7	7C-722	Expansion Plug	
8	7C-711	Output Bevel Gear	1.9
9	6C-133	Key	
10	5C-95	Bearing Retaining Washer	
11	4C-839	Nut	
12	7C-728	Key	
13	7C-712	Input Bevel Gear	5.7
14	7C-725	Shim (.005")	
15	7C-726	Shim (.007")	
16	7C-724	Bearing Carrier	9.0
17	7C-727	Seal	
18	7C-721	Input Shaft	3.7

P. T. O. SHAFT WITH INTEGRAL SHIELD



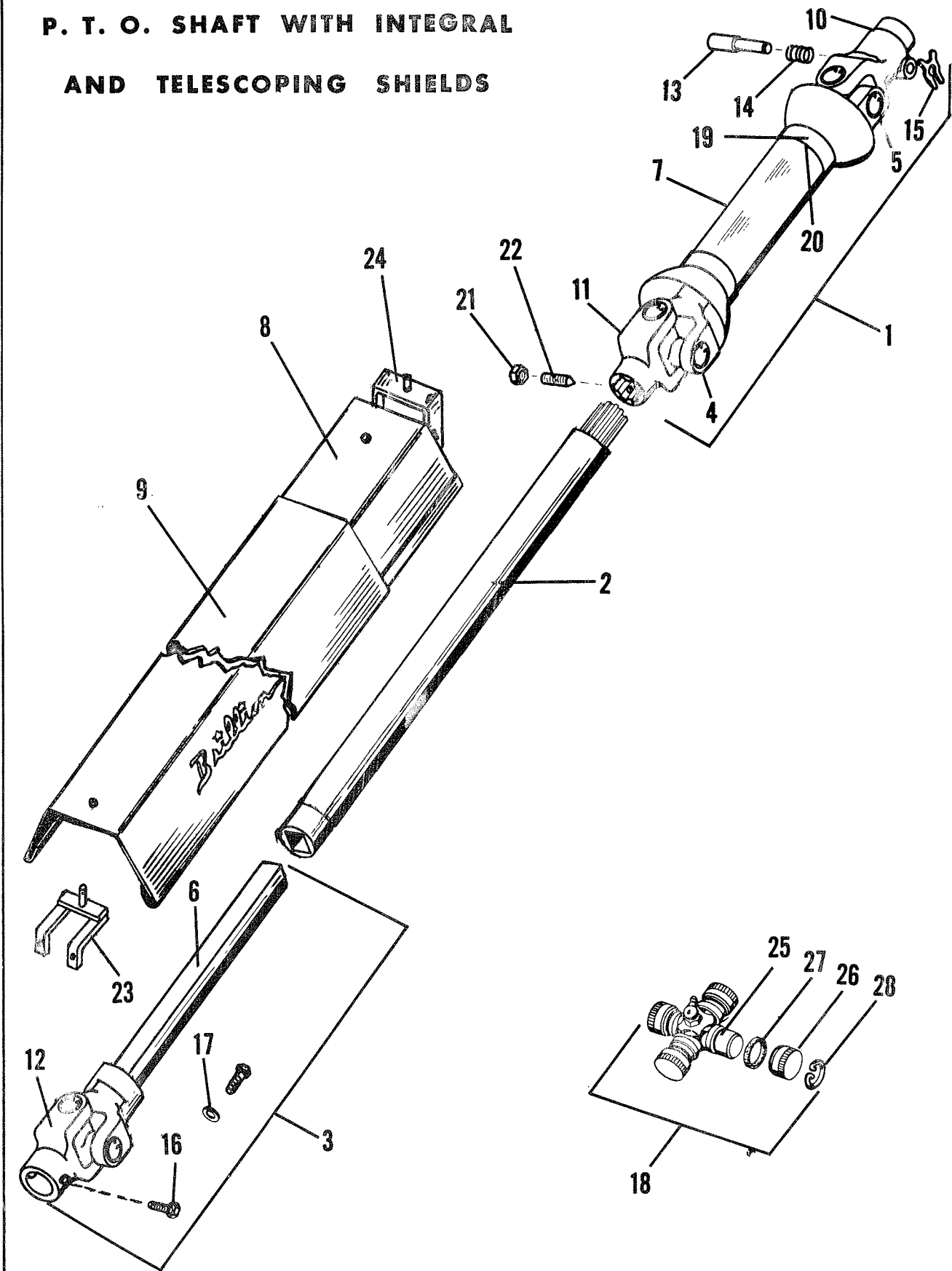
6C-727

P.T.O. SHAFT for RS-60 SHREDDER

Index No.	Part No.	Part Name	Weight
1	6C-553	Joint & Shaft With Shield (1 3/8 Spline)	23.5
	6C-610	Joint & Shaft With Shield (1 1/8 Spline)	22.0
2	8C-177	Joint & Tube With Shield	24.5
3	8C-299	Sq. Shaft And Yoke Only	14.0
4	8C-308	Tube & Yoke Only	12.5
5	8C-300	Shield Only (For Sq. Shaft End)	4.0
6	8C-309	Shield Only (For Tubular End)	7.5
7	6C-589	1 3/8"-6 Spline Q.D. Tractor Yoke Only	4.2
	6C-735	1 1/8"-6 Spline Tractor Yoke Only	3.8
8	6C-620	1 3/8" Dia. Bore Shear Pin Yoke Only	3.0
9	5C-987	Lock Pin	.2
10	5C-257	Lock Pin Spring	-
11	5C-939	"X" Washer	-
12	8C-324	Shear Bolt	0.2
13	6C-380	P.T.O. Spacer	0.1
14	5C-515	Joint Repair Kit	2.0
15	8C-301	Steel Balls (Set Of 8) Not Shown	.2
16	8C-302	Retaining Ring (2 3/4" Dia.)	-
17	6C-137	Cross	1.5
18	6C-138	Needle Bearing	.3
19	6C-139	Cork Washer	-
20	6C-141	Snap Ring	-

6C-727

**P. T. O. SHAFT WITH INTEGRAL
AND TELESCOPING SHIELDS**

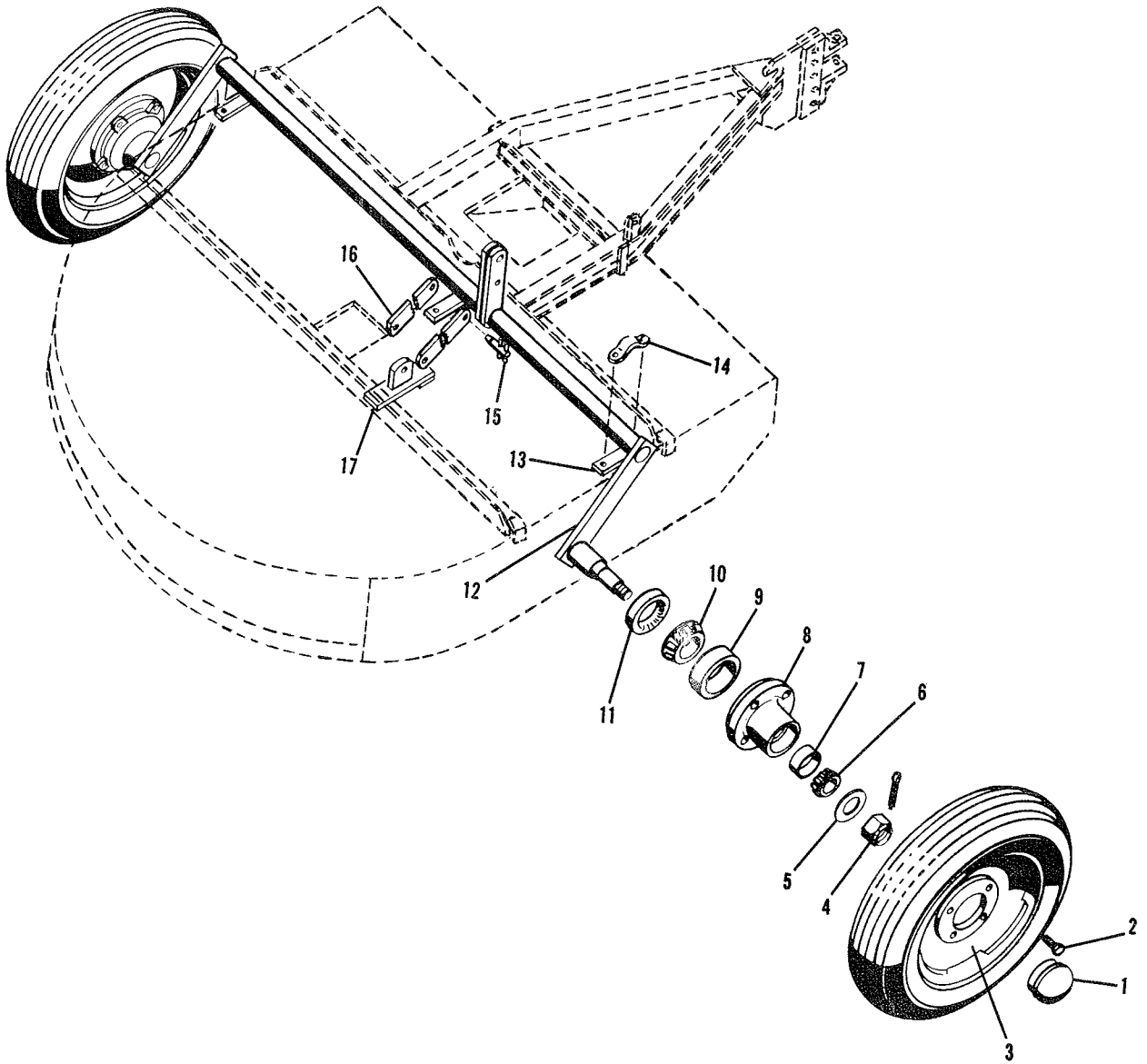


6C-727

6C-727

P.T.O. SHAFT for RS3-60 SHREDDER			
Index No.	Part No.	Part Name	Weight
1	8C-176	Tractor P.T.O. Hitch (1 3/8 Spline) With Shield	26.5
	8C-191	Tractor P.T.O. Hitch (1 1/8 Spline) With Shield	26.0
2	8C-184	Tubular Drive Shaft	10.0
3	8C-180	Joint & Shaft	15.0
4	8C-314	Yoke (With Roll Pin Hole)	2.7
5	8C-313	Sq. Shaft & Yoke	8.5
6	8C-299	Yoke & Shaft	8.5
7	8C-316	Shield Only (For Tractor P.T.O. Hitch)	5.0
8	8C-325	Inner Shield	4.5
9	8C-326	Outer Shield	4.5
10	6C-589	1 3/8-6 Spline Q.D. Tractor Yoke Only	3.5
	6C-735	1 1/8-6 Spline Tractor Yoke Only	3.1
11	8C-315	1 3/8-6 Spline Screw Lock Yoke Only	2.7
12	6C-620	1 3/8 Dia. Bore Shear Pin Yoke Only	3.0
13	5C-987	Lock Pin	.2
14	5C-257	Lock Pin Spring	-
15	5C-939	"X" Washer	-
16	8C-324	Shear Bolt	.2
17	6C-380	P.T.O. Spacer	.1
18	5C-515	Joint Repair Kit	2.0
19	8C-301	Steel Balls (Set Of 8) Not Shown	.2
20	8C-302	Retaining Ring (2 3/4 Dia.)	-
21	5C-234	Jam Nut	-
22	5C-233	Joint Set Screw	-
23	6C-514	Shield Support Bracket	1.7
24	8C-328	Guard Bracket	1.7
25	6C-137	Cross	1.5
26	6C-138	Needle Bearing	.3
27	6C-139	Cork Washer	-
28	6C-141	Snap Ring	-

WHEEL & AXLE ASSEMBLY

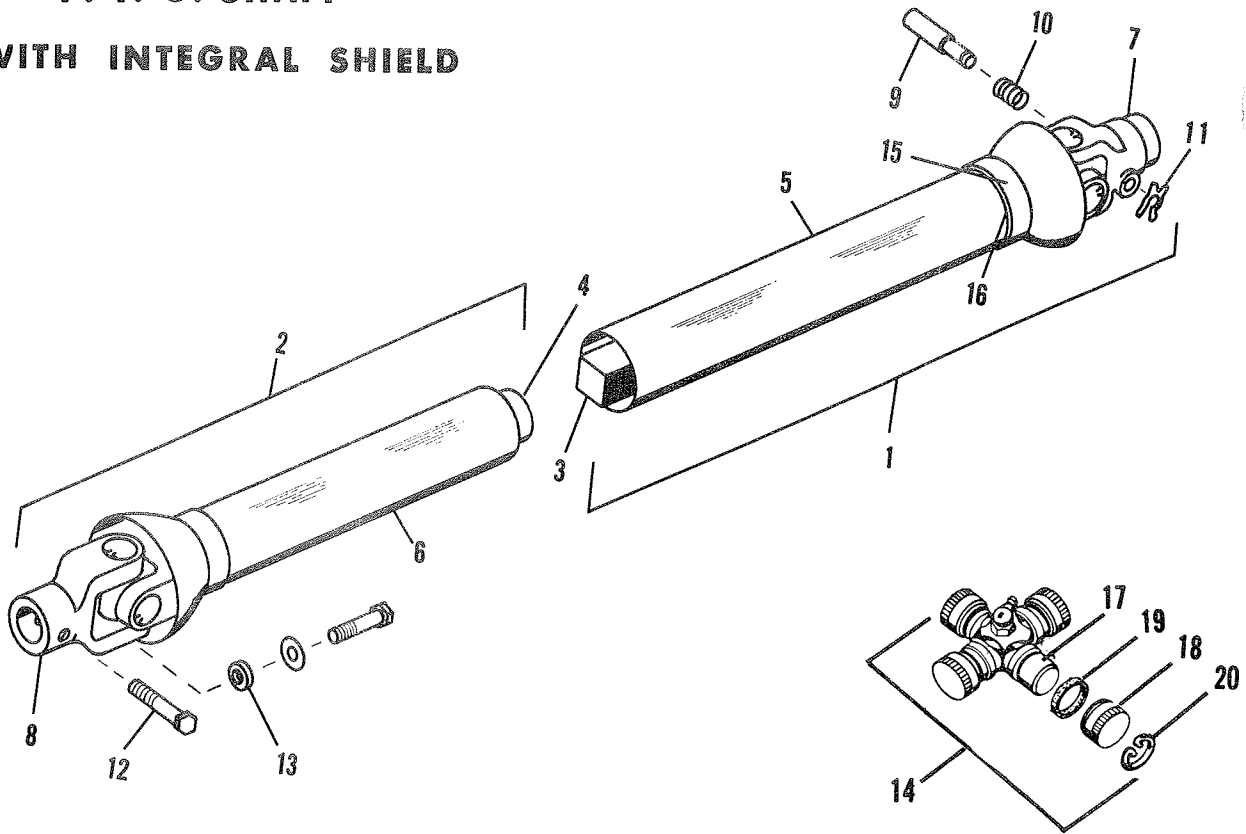


6C-727

WHEEL & AXLE ASSEMBLY

Index No.	Part No.	Part Name	Weight
1	5C-908	Cap	.1
2	5C-100	Bolt	.
3	5C-916	Rim Only	.
4	5C-909	Nut	.
5	5C-907	Washer	.1
6	5C-911	Cone Timken #LM11949	.2
7	5C-912	Cup Timken #LM11910	.2
8	5C-904	Wheel Hub	6.3
9	5C-914	Cup Timken #LM67010	.2
10	5C-913	Cone Timken #LM67048	.2
11	5C-910	Seal	.1
12	6C-602	Axle Assembly Complete With Hubs	.
	7C-157	Axle Assembly Less Hubs	.
13	6C-593	Axle Bearing - Bottom	1.6
14	6C-285	Axle Bearing	1.7
15	4C-772	Transport Pin	.5
16	6C-732	Transport Link	1.8
17	6C-733	Transport Bracket	3.0

**P. T. O. SHAFT
WITH INTEGRAL SHIELD**

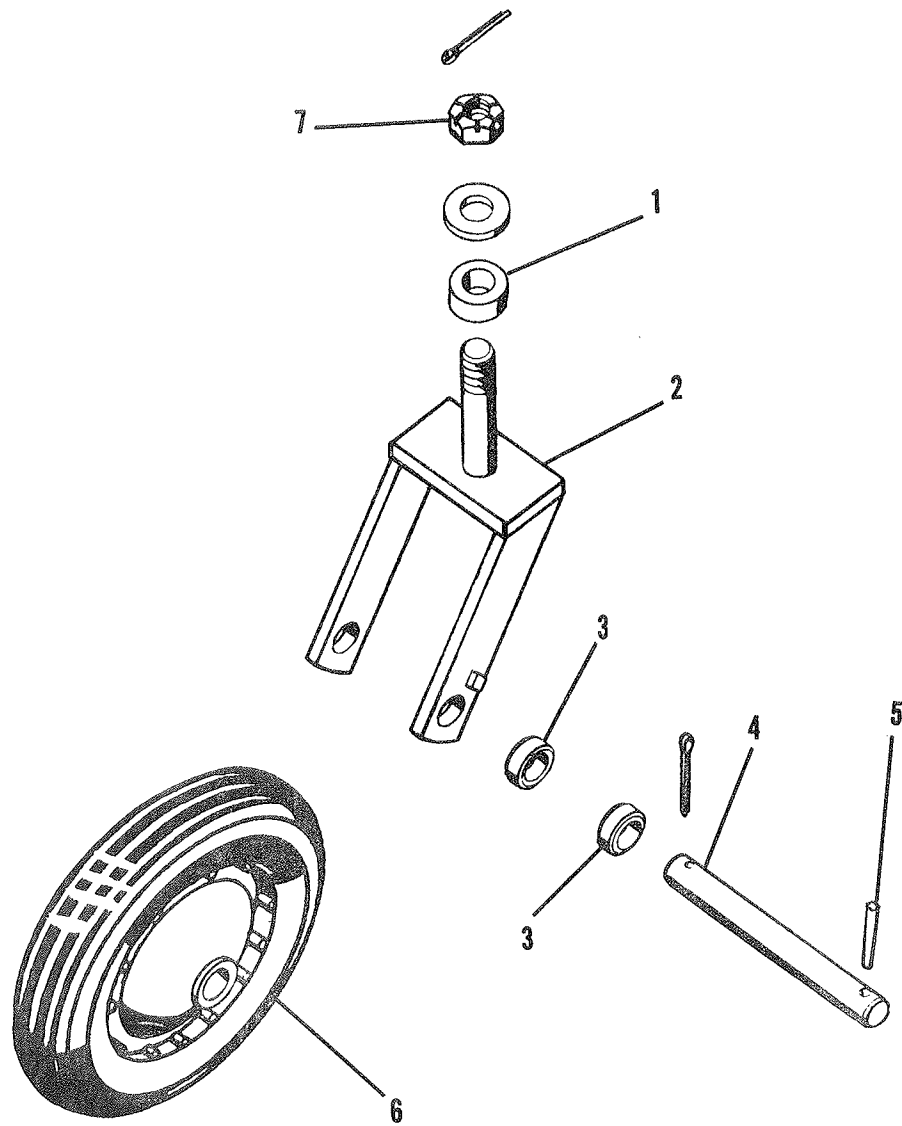


P.T.O SHAFT for RSPA-60 RSPB-60 SHREDDERS

Index No.	Part No.	Part Name	Weight
1	6C-553	Joint & Shaft With Shield (1 3/8 Spline)	23.5
	6C-610	Joint & Shaft With Shield (1 1/8 Spline)	22.0
2	6C-552	Joint & Tube With Shield	17.5
3	8C-299	Sq. Shaft & Yoke Only	14.0
4	8C-306	Tube & Yoke Only	9.5
5	8C-300	Shield Only (For Sq. Shaft End)	4.0
6	8C-307	Shield Only (For Tubular End)	4.0
7	6C-589	1 3/8-6 Spline Q.D. Tractor Yoke Only	4.2
	6C-735	1 1/8-6 Spline Tractor Yoke Only	3.8
8	6C-620	1 3/8 Dia. Shear Pin Yoke Only	3.0
9	5C-987	Lock Pin	.2
10	5C-257	Lock Pin Spring	-
11	5C-939	"X" Washer	-
12	8C-324	Shear Bolt	.2
13	6C-380	P.T.O. Spacer	.1
14	5C-515	Joint Repair Kit	2.0
15	8C-301	Steel Balls (Set Of 8) Not Shown	.2
16	8C-302	Retaining Ring (2 3/4" Dia.)	-
17	6C-137	Cross	1.5
18	6C-138	Needle Bearing	.3
19	6C-139	Cork Washer	-
20	6C-141	Snap Ring	-

6C-727

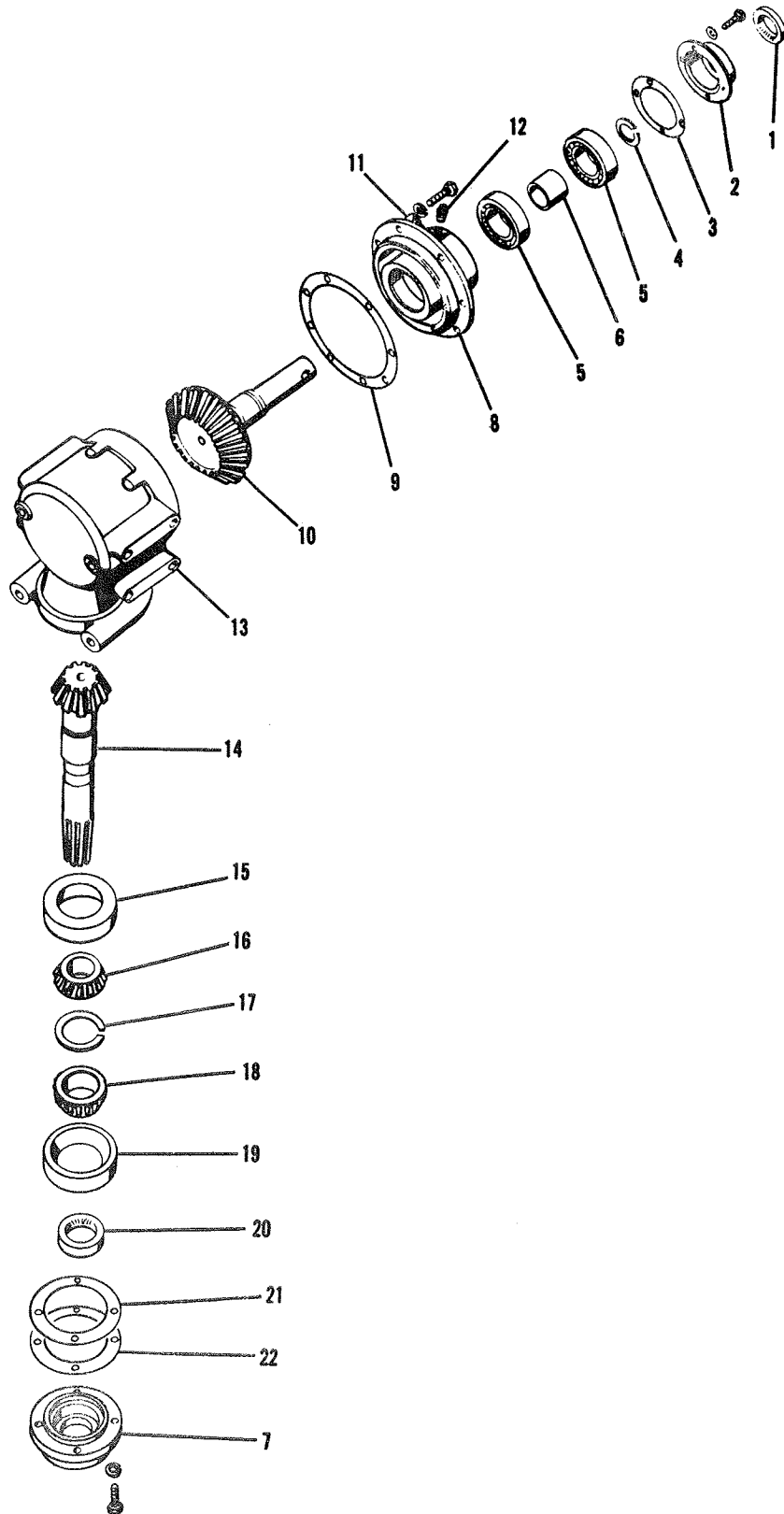
WHEEL & FORK ASSEMBLY



INDEX NO.	PART NO.	PART NAME	WEIGHT
1	6C-494	Washer	
2	6C-460	Wheel Fork	
3	6C-466	Spacer	
4	6C-469	Axle	
5	1C-174	Drive Pin	
6	5C-671	Wheel	
7	6C-465	Nut	

GEAR BOX ASSEMBLY 6C-474

Used on machines prior to serial number RSP60-1300 & RS60-1400

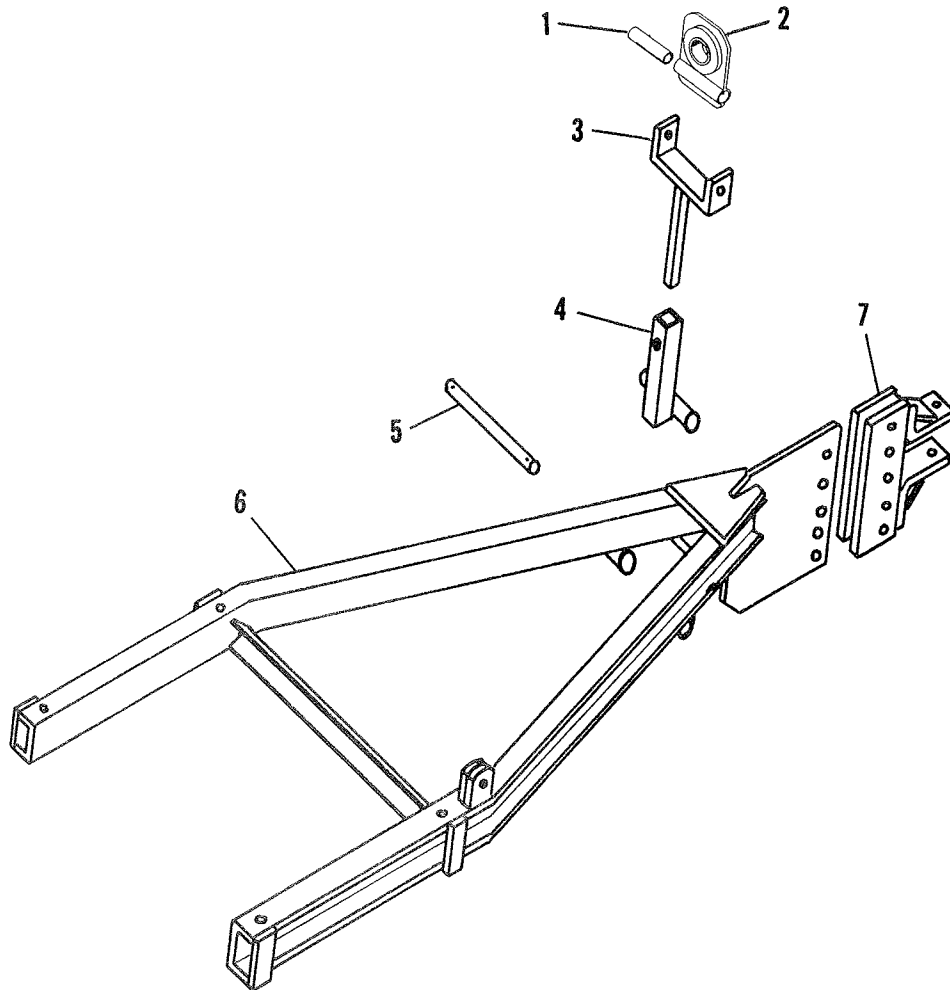


6C-727

GEAR BOX ASSEMBLY

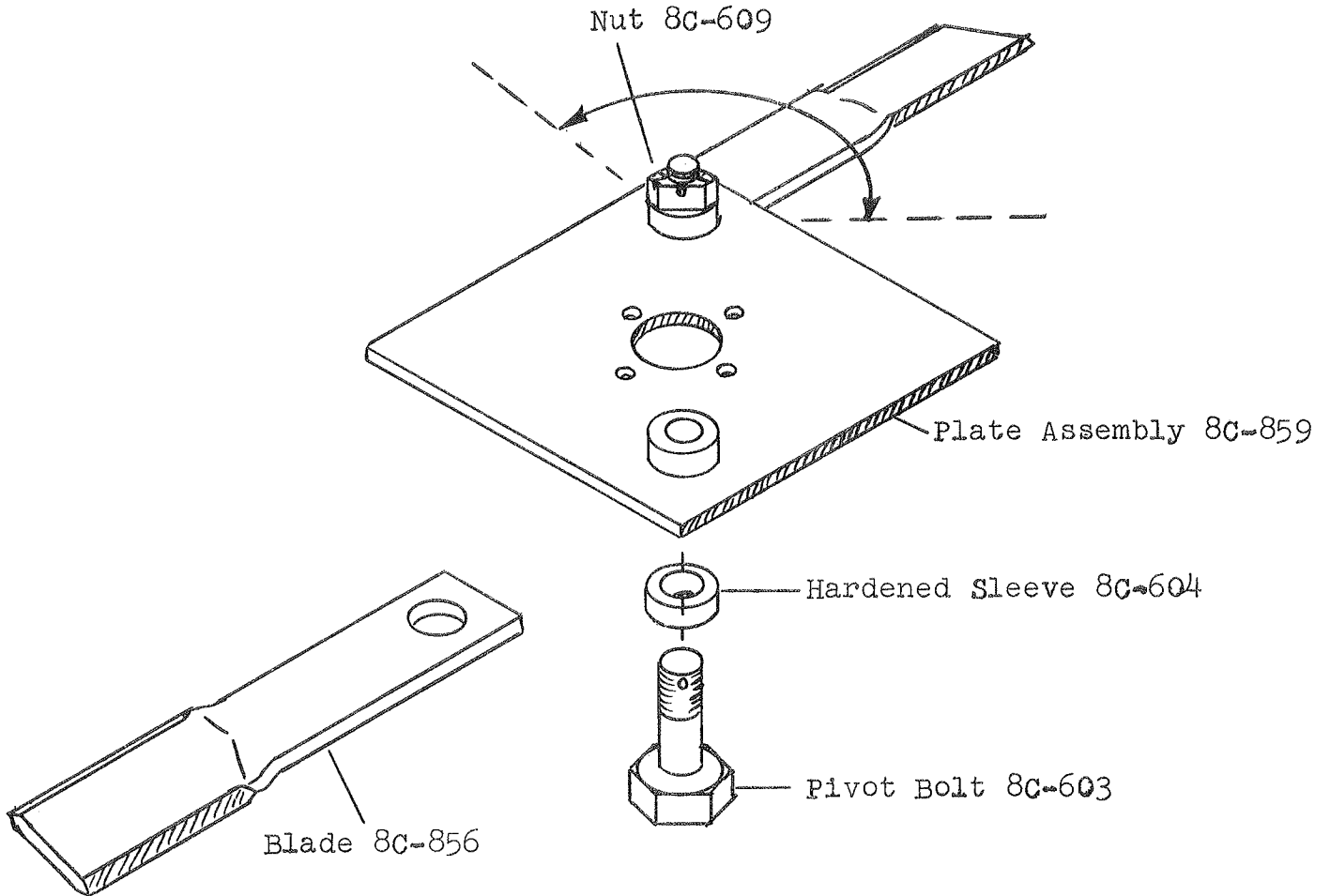
Index No.	Part No.	Part Name	Weight
	6C-474	Gear Box Complete	
1	7C-158	Seal, Oil	.1
2	7C-159	Cap, Bearing, Retainer	1.3
3	7C-160	Gasket, Bearing Retainer	
4	7C-161	Ring, Retainer	
5	7C-162	Bearing	.8
6	7C-163	Spacer, Bearing	.4
7	7C-164	Cap, Bearing Retainer	2.3
8	7C-165	Housing, Side	9.3
9	7C-166	Shim .007	
	7C-167	Shim .012	
10	7C-168	Gear, Driving	9.1
11	5C-573	Breather Assembly	
12	4C-840	Plug, Pipe	
13	7C-169	Housing, Gear	26.5
14	7C-170	Gear, Driven	10.0
15	7C-171	Bearing Cup, Timken #363	.5
16	4C-850	Bearing Cone, Timken #368	.8
17	7C-172	Ring, Retainer	
18	7C-173	Bearing Cone, Timken #355	.8
19	7C-174	Bearing Cup, Timken #352	.8
20	7C-175	Seal, Oil	.1
21	7C-176	Shim .007	
22	7C-177	Shim .012	

RS3-60 MODEL DRAWBAR ASSEMBLY



INDEX NO.	PART NO.	PART NAME	WEIGHT
1	7C-322	Bearing Sleeve	.2
2	7C-325	Bearing Assembly	1.5
3	6C-639	Support Shaft Assembly	2.8
4	6C-637	Support Tube Assembly	2.4
5	6C-634	Pivot Shaft	.6
6	6C-641	Drawbar Assembly	48.0
7	4C-757	Adjustable Hitch Plate Assembly	8.0

Swinging Blade Conversion Kit
Part No. 8C-857



Installation Instructions

Remove the 4 bolts which fasten the present rigid-blade mounting plate on the output shaft of the gearbox. Remove the rigid blade plate, and clean up the flange on the output shaft. Install the swinging blade assembly using the same four bolts IF THEY ARE IN GOOD CONDITION. If they are not in good condition, order Brillion part number 6C-433 for replacement.

