

**OPERATOR'S MANUAL
REPAIR PARTS CATALOG**

Brillion

R-66

BRUSH-BUSTER

ALL PARTS NOT LISTED ARE STANDARD HARDWARE

866

Printed in U.S.A.

BRILLION IRON WORKS, INC.

Brillion, Wisconsin, U. S. A.

9C636

Brillion

ROTARY SHREDDER

Your Brillion Shredder is built with the best materials and workmanship available. All machines are adjusted at the factory to assure their proper mechanical operation. Minor slip clutch adjustments may have to be made, to prevent premature failure of parts.

* * * * *

Many future difficulties can be avoided by following the operating instructions, and by correctly adjusting and lubricating the machine when necessary.

* * * * *

Location Reference

"Right" and "left", "front" and "rear" refer to the operators right and left, front or rear, when he faces the same direction as the machine is traveling.

Brillion R-66 Heavy Duty

Rotary Shredder

Specifications

Width of Cut	66 inches
Height of Cut.	1 to 14 inches
Blades	Heat treated alloy steel
Hood	Extra heavy welded steel with removable skirt panels
Tractor P, T. O. Speed	540 R. P. M.
Gears	Machine cut heat treated alloy steel gears
Bearings	Timken tapered roller
Blade Mountings	Rigidly mounted with heat treated bolts on duc- tile iron "flywheel type" blade plates
Wheels	15" Rim 14" Rim Laminated Tire & Rim
Weight	1540#

ASSEMBLY INSTRUCTIONS

BRILLION R-66 ROTARY SHREDDER

This model of Brillion Rotary Shredder has been designed for the user whose demands require an extra heavy duty machine. It features replaceable side panels of varying thickness - for example, on the left side, the plate is 3/8" thick. This is the side toward which material is thrown by the rotating blades.

Your machine is shipped as four basic assemblies. All fasteners are already in the holes in which they are to be used.

Place the drawbar on top of the hood and bolt down tight with the (7) seven bolts, nuts, and lockwashers provided.

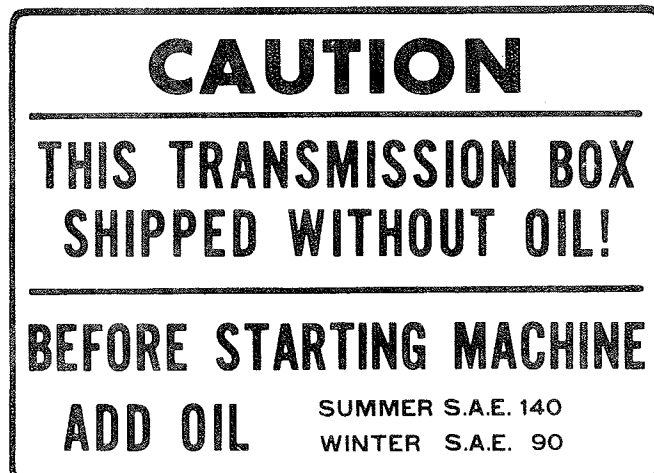
Separate the axle arm assemblies from each other. The additional bolts required for mounting will be found in the small bag attached to the assembly.

Notice that the main axle can be installed across the center of the machine (as shipped) or it can be installed across the back portion of the hood, where the wheels can be turned inward if desired, making possible close work alongside obstructions, etc. With the axle at the center of the machine, the wheels are to be mounted projecting rearward and outward.

Attach the PTO assembly and fasten it in place with the bolt provided; the assembly is now complete.

LUBRICATION

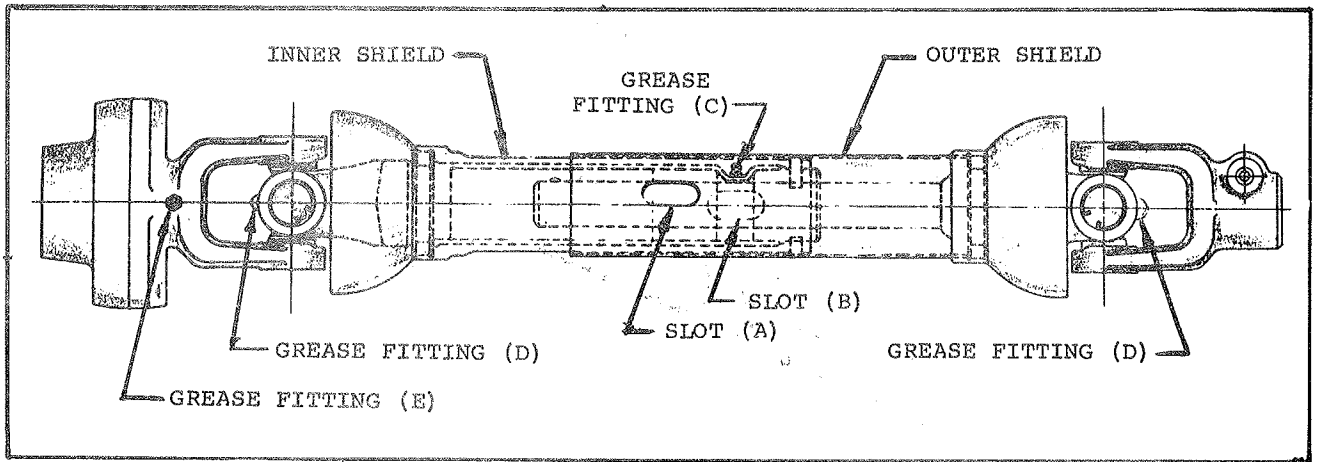
The gear housing on this machine will require lubrication before the shredder can be put in operation. A caution sticker similar to the one found on the hood top is pictured below. Use SAE140 oil for summer operation and SAE90 during the winter. Check oil level.



5-64

9C-636

To grease the square sliding shaft in the PTO, it may be necessary to detach the universal joint from the tractor. Rotate and slide the outer shield until slot (A) lines up with slot (B) in the inner shield, then rotate both shields until the grease fitting (C) is in line with the openings. Also grease fittings at (D) and (E). Grease all PTO fittings after each 10 hours of operation.



OPERATION

Depending upon the type of work you intend to do, the lower set of cutting blades may have to be changed. For all heavy brush clearing or chopping heavy prunings, all blades must be mounted flat. For light prunings, grass cutting, crop residues and the like, the lower blades may be mounted in the tilted position on the lower blade plate. This arrangement provides suction to lift loose and downed materials.

Shear Coupler

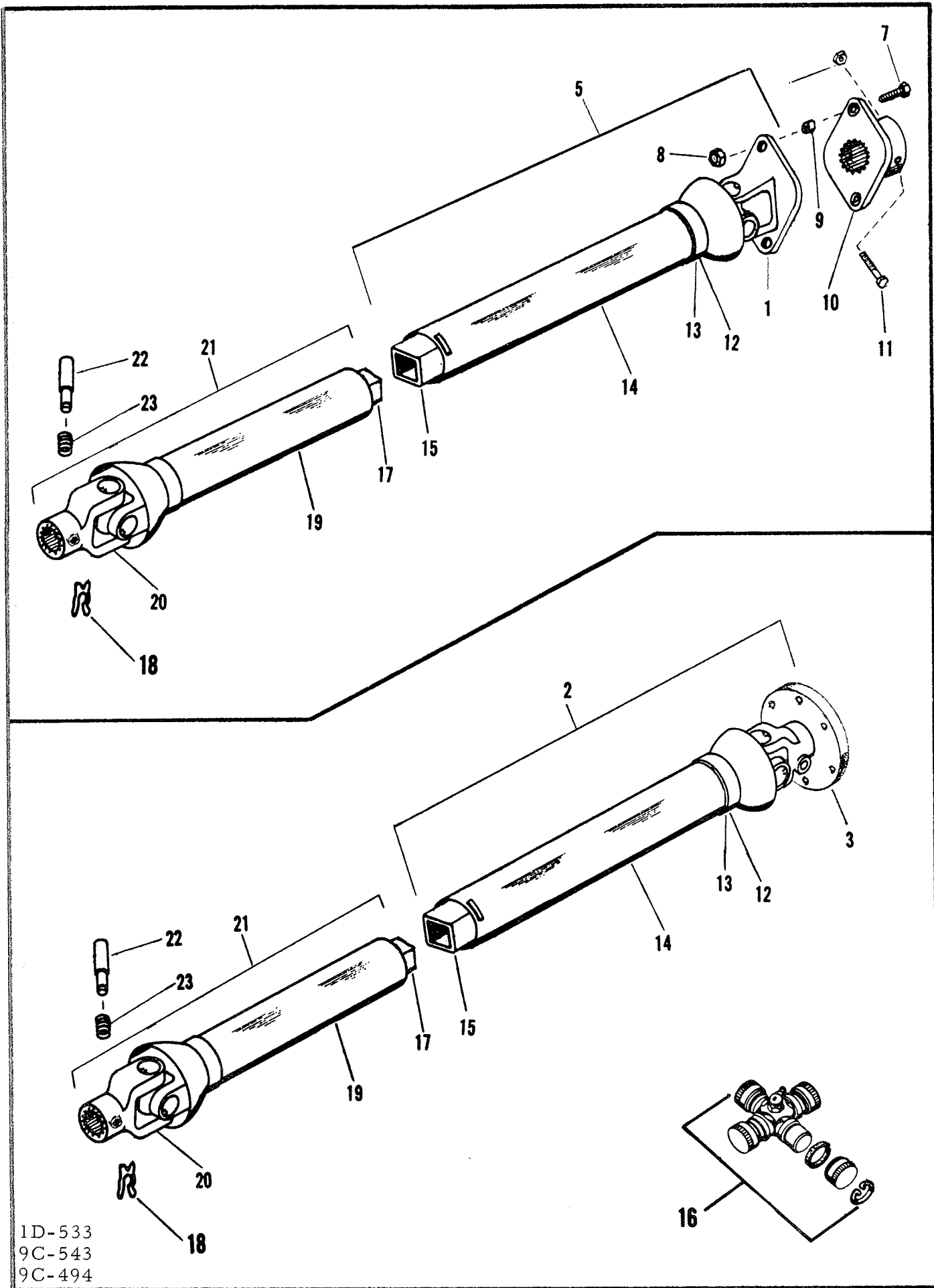
The drive train is protected by two 3/8 shearpins in the PTO shaft. These are common bolts which can be purchased anywhere, but DO NOT USE HEAT TREATED BOLTS OR PINS OF ANY KIND. To do so is inviting severe damage to shredder or tractor. When replacing shearpins, do NOT draw bolts tight - only snug, or finger tight.

Use locknuts or double nuts to keep bolts from loosening.

Operate your shredder set level or slightly lower in front. The front drawbar hitch plate can be adjusted to accomplish this.

Slip Clutch

The multiple disc clutch is intended to protect the shredder and tractor against shock and overload damage. It also eliminates the downtime created by replacing shear pins. If the clutch runs hot during normal operation of the tractor, draw up 1/6 turn on each of the (12) adjusting screws. Continue to operate and recheck for heating. Do this until excessive slippage and heating are eliminated.

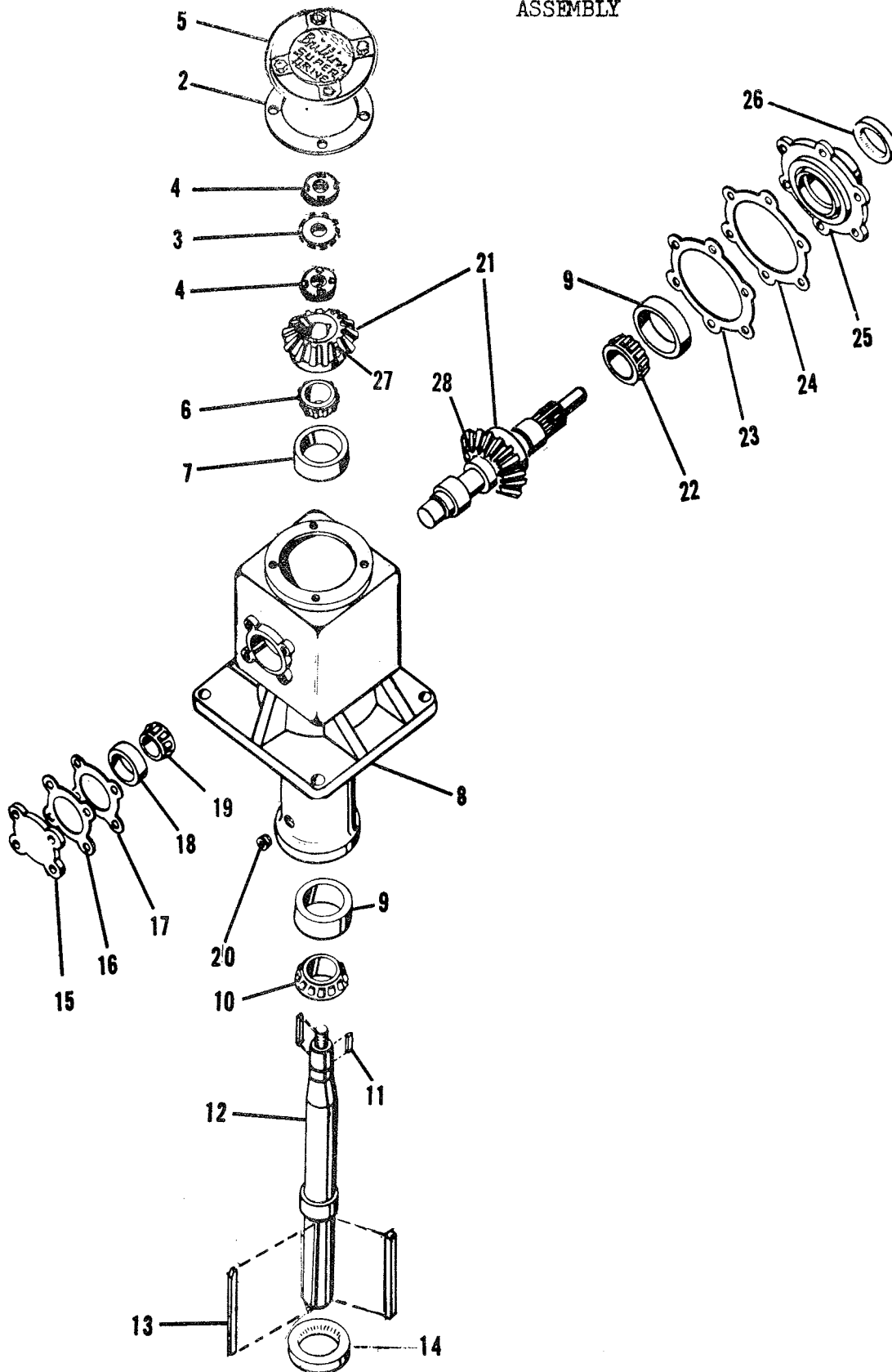


1D-533
 9C-543
 9C-494

UNIVERSAL DRIVE SHAFT - R-66

Index No.	Part No.	Description
1	1D-766	Shear Yoke
2	1D-914	Tube & Flange Yoke Assembly
3	1D-904	Yoke & Flange Assembly
5	1D-276	Tube & Safety Shear Assembly
6	6C-748	Stover Nut
7	1C-508	Shear Bolt (3/8-16 NC x 2-1/2 Long)
8	5C-954	Stover Nut
9	9C-419	Bushing - 3/8"
10	9C-390	Shear Flange Assembly
11	9C-391	Bolt
12	8C-301	Set of 8 Balls
	2D-140	Nylon Bearing
13	8C-302	Retaining Ring (Used With 8 Balls)
	2D-141	Retaining Ring (Used With Nylon Bearing)
*	1D-854	Nylon Centralizer
14	1D-286	Rear Shield Complete
15	1D-285	Tube & Yoke Assembly
16	5C-515	Universal Joint Repair Kit
17	9C-335	Shaft & Yoke Assembly
18	5C-939	"X" Washer (Not Required With 3D-757)
19	9C-394	Front Shield Complete
20	6C-589	1-3/8 - 6B Spline Q. D. Tractor Yoke
21	9C-325	Shaft & Joint Assembly
22	5C-987	Lock Pin (Obsolete - Order 3D-757)
23	5C-257	Lock Pin Spring

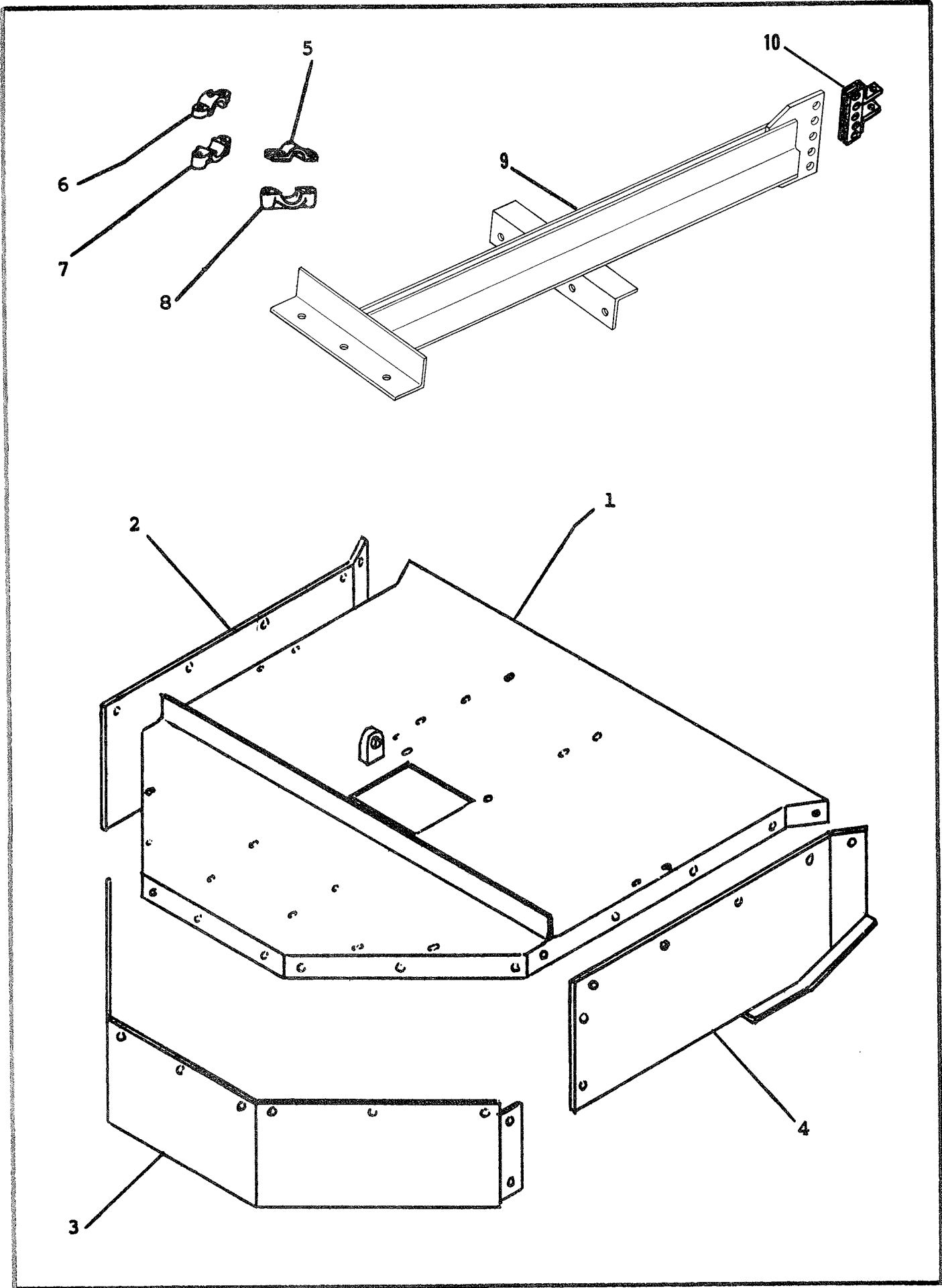
SHREDDER
"SUPER DRIVE"
ASSEMBLY



9C-636

BLADE DRIVE ASSEMBLY

Index No.	Part No.	Description	Used On Model No.
	9C-552	Gearbox Assembly Complete	0162 :
	1D-765	Gearbox Assembly Complete (Super Drive)	0262-0263
2	4C-825	Cover Gasket	All Models
3	5C-95	Bearing Washer	0162
	1D-764	Bearing Lockwasher	0262-0263
4	4C-839	Bearing Nut	0162
	1D-763	Bearing Locknut	0262-0263
5	4C-947	Drive Cover	0162
	1D-768	Drive Cover (Super Drive)	0262-0263
6	4C-835	Bearing Cone (#31597)	0162
	1D-759	Bearing Cone (#25580)	0262-0263
7	4C-833	Bearing Cup (#31520)	0162
	1D-758	Bearing Cup (#25520)	0262-0263
8	4C-821	Gear Housing	0162
	1D-760	Gear Housing (Super Drive)	0262-0263
9	4C-832	Bearing Cup (#362-A)	All Models
10	4C-850	Bearing Cone (#368)	All Models
11	4C-836	Key - Output	All Models
12	9C-557	Output Shaft	0162
	1D-761	Output Shaft (Super Drive)	0262-0263
13	9C-708	Key	All Models
14	4C-831	Seal - Output	All Models
15	4C-822	Bearing Cap	All Models
16	4C-827	Shim (.007")	All Models
17	4C-826	Shim (.005")	All Models
18	3C-164	Bearing Cup (#14276)	All Models
19	4C-848	Bearing Cone (#14138-A)	All Models
20	4C-841	Drain Plug	All Models
21	1D-770	Matched Gear & Input Shaft W/Gear	0262-0263
22	4C-847	Bearing Cone (#367)	All Models
23	4C-829	Shim (.005")	All Models
24	4C-828	Shim (.007")	All Models
25	4C-842	Bearing Flange	All Models
26	4C-830	Seal - Input	All Models
27	4C-747	Output Bevel Gear	0162
	1D-740	Output Bevel Gear (Super Drive)	0262-0263
28	9C-556	Input Shaft With Gear	0162
	1D-769	Input Shaft With Gear (Super Drive)	0262-0263

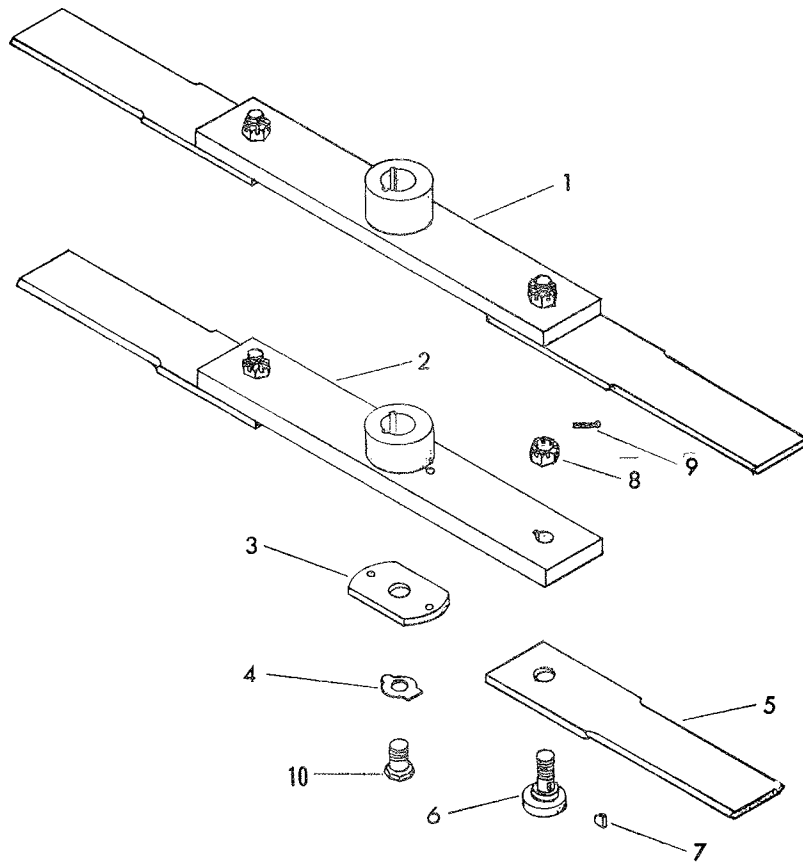


9C-636

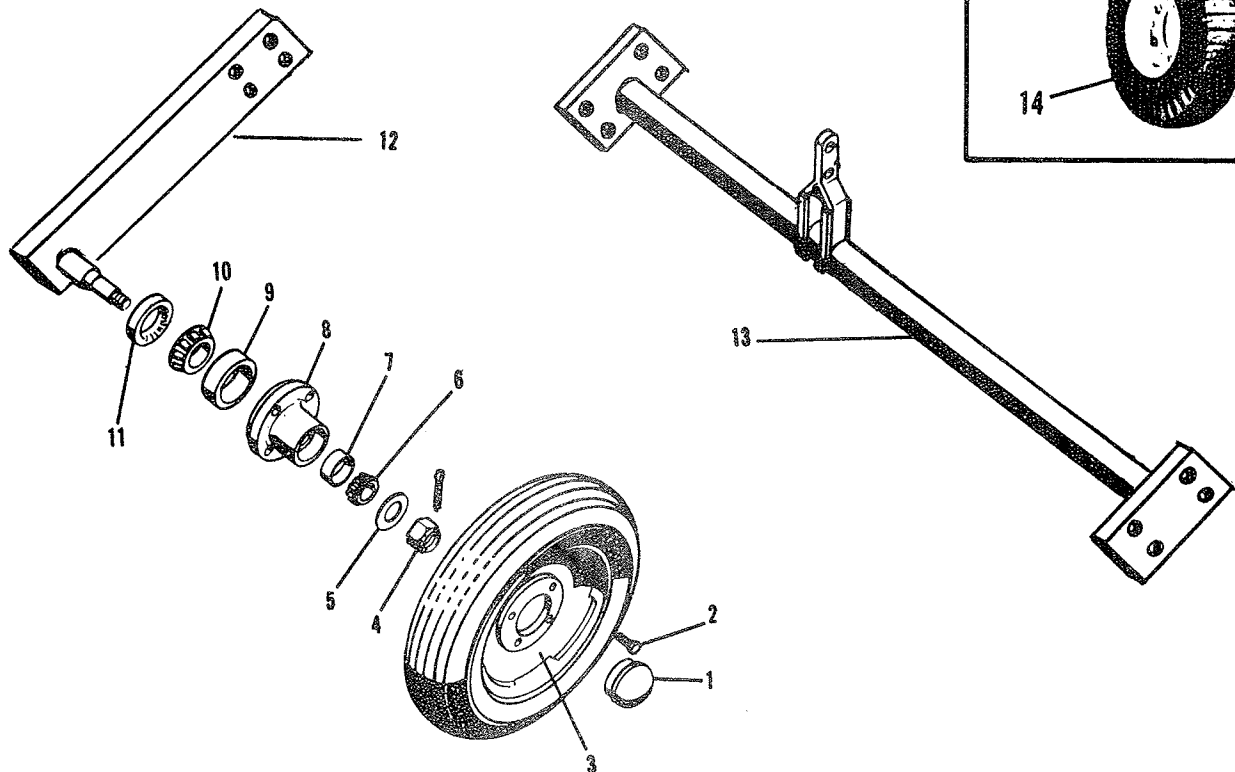
HOOD & DRAWBAR ASSEMBLY

Index No.	Part No.	Part Name
1	9C-547	Hood Weldment
2	9C-641	L. H. Side Panel Assembly
3	9C-642	Rear Panel Assembly
4	9C-640	R. H. Side Panel Assembly
5	9C-366	L. H. Axle Bearing Cap
6	9C-367	R. H. Axle Bearing Cap
7	4C-758	Axle Bearing Cap
8	4C-778	Axle Bearing Bottom
9	9C-362	R. H. Axle Bearing - Bottom
10	9C-363	L. H. Axle Bearing - Bottom
9	2D-721	Top Mount Drawbar
10	1D-293	Adj. Hitch Plate Assembly

SWINGING BLADE ASSEMBLY



WHEEL & AXLE ASSEMBLY

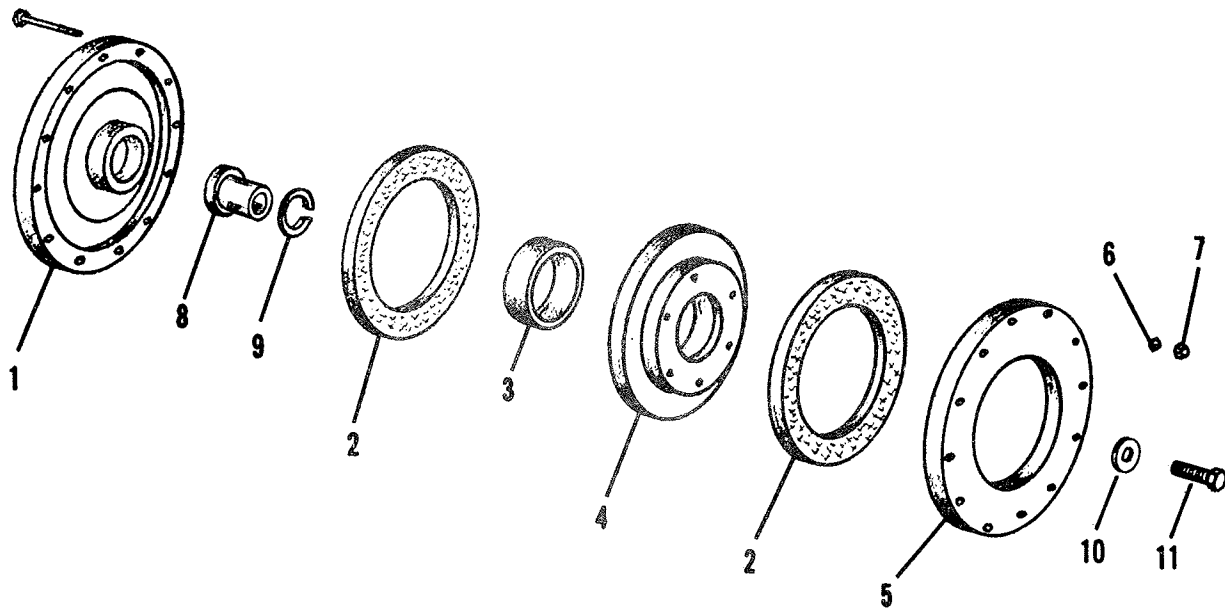


SWINGING BLADE ASSEMBLY

Index No.	Part No.	Description
1	3D-587	Upper Blade Plate
2	3D-586	Lower Blade Plate
3	3D-585	Bottom Plate
4	4C-918	Clutch Lockwasher
5	3D-520	Blade
6	9C-421	Pivot Bolt
7	9C-424	Woodruff Key
8	8C-609	Slotted Nut
9	6C-468	Cotter Pin

WHEEL & AXLE ASSEMBLY

Index No.	Part No.	Description
1	5C-908	Cap
2	5C-100	Wheel Bolt
3	5C-916	Wheel Rim - 15"
	8C-470	Wheel Rim - 14"
4	5C-909	Nut
5	5C-907	Washer
6	5C-911	Cone (Timken #LM11949)
7	5C-912	Cup (Timken #LM11910)
8	5C-904	Wheel Hub
9	5C-914	Cup (Timken #LM67010)
10	5C-913	Cone (Timken #LM67048)
11	5C-910	Grease Seal
12	9C-978	Axle Arm Assembly
13	9C-550	Lift Shaft Assembly
14	1D-900	6.00 x 9 Laminated Tire & Rim
	1D-933	6.00 x 9 Laminated Tire Kit (2 wheels with bolts)

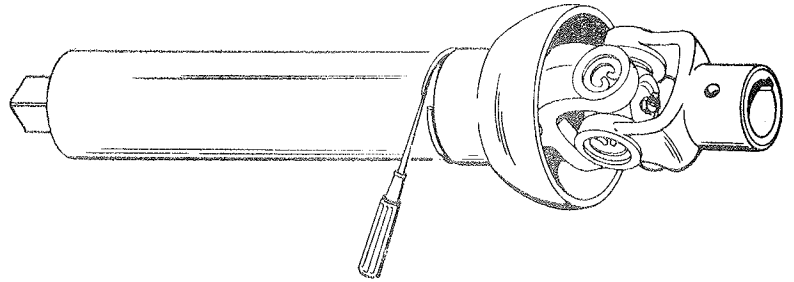


SLIP CLUTCH ASSEMBLY
9" CLUTCH

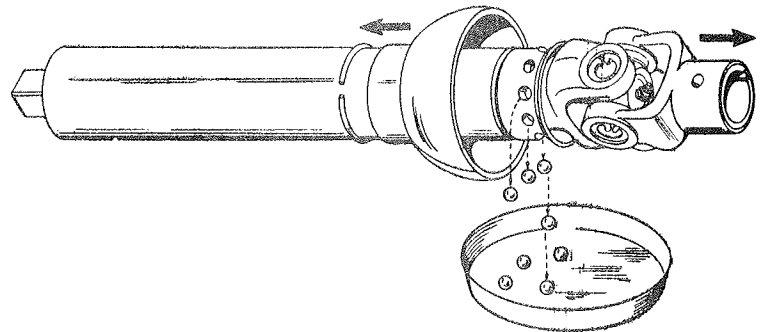
Sym.	Part No.	Part Name
	1D-909	Clutch Assembly (Complete)
1	1D-371	Hub
2	1D-395	Friction Disc 9" Outside Dia.
3	1D-544	Bushing
4	1D-374	Friction Plate
5	1D-372	Pressure Plate
6	1D-398	Belleville Washer
7	1C-670	Nut (Self Locking)
8	1D-888	Adapter Sleeve
9	1D-542	Snap Ring
10	1D-889	Retaining Washer
11	5C-516	Capscrew, L. H. Thread

INSTRUCTIONS FOR REMOVING
QUICK DETACHABLE FREE WHEELING GUARD

1. Use screw driver or sharp pointed tool to remove snap ring from groove at back of bell.

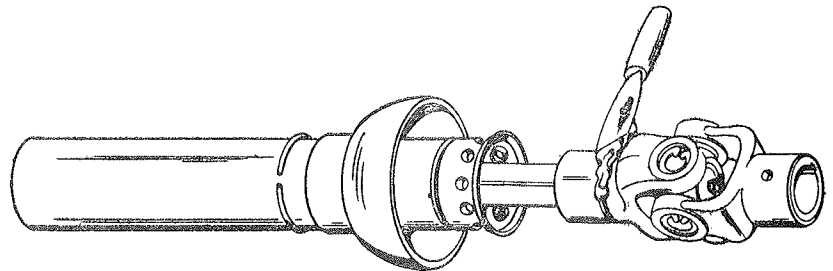


2. Hold assembly over container so that balls will not be lost and slide bell away from joint toward opposite end of tube. If balls do not drop out, slide tube away from joint, forcing balls from cage.

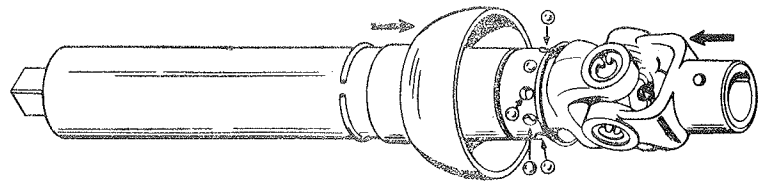


INSTRUCTIONS FOR ASSEMBLING
QUICK DETACHABLE FREE WHEELING GUARD

3. Fill raceway in yoke with grease.



4. Slide tube with bell and snap ring over raceway. Insert balls through holes into raceway where grease will hold them in place. Slide bell over balls. Slide snap ring into groove.



Grease joints, telescoping shafts and guard regularly. This Quick Detachable Free Wheeling Guard is the finest guard built. It is provided for your protection.

Form 4D-200
9C-544

9C-636
1D-626
8C-658

9C-494
5C-103
6C-727

