

ASSEMBLY INSTRUCTIONS

REPAIR PARTS CATALOG



SPIKE DRAG KIT

for

BRILLION SOIL BUILDER

IMPORTANT!

Repairs cannot be purchased retail direct from factory. Order through you Brillion dealer.



BRILLION IRON WORKS, INC.
BRILLION, WISCONSIN 54110

SETTING UP INSTRUCTIONS

Attach the drag supports to the rear tooth bar with U-bolts, nuts and lockwashers. See the layout for your size of machine for correct location of supports. Note that the side of the supports with the small lugs goes on the bottom.

Position the drag sections under the supports. Bolt the drags to the supports with 1/2-13 NC x 3" long capscrews, flat washers, lockwashers and nuts. Put the support chains on the inside or outside as indicated on the drag support layout.

For normal operation, fasten all chains in their longest links.

Attach the pull chains for each section to the lugs on the bottom side of the supports with a 7/16-14 NC x 1½" long capscrew, lockwasher and nut.

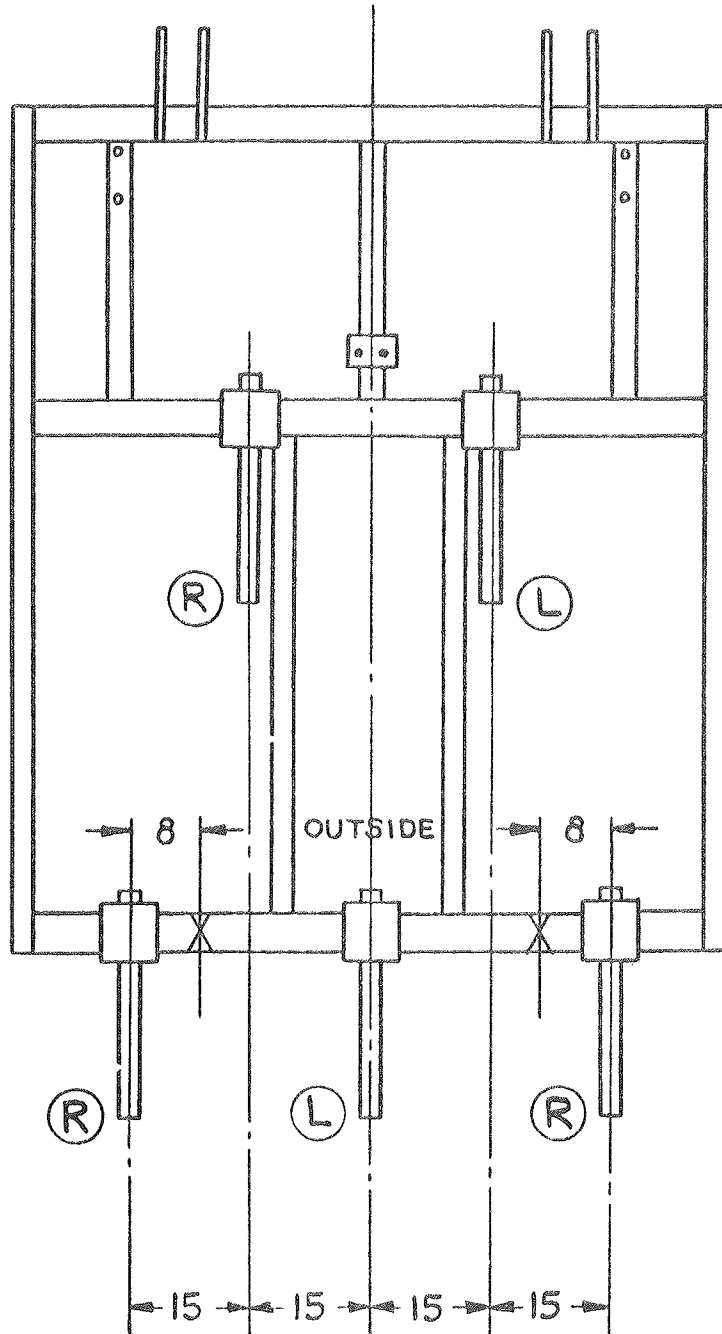
OPERATING INSTRUCTIONS

The angle of the spikes can be adjusted by removing the pin on the control links and moving them to a new hole. If you are going to set the spikes flatter, it may be easier to move to a new hole with the machine setting on the ground. If you want to set the spikes steeper, raise the machine.

When operating in heavy residue it may help to set the spikes flatter to keep from plugging. It will also help prevent plugging by shortening the support chains on the front spike bar and the pull chains so that the front spike bar is partially supported by the chains in working position.

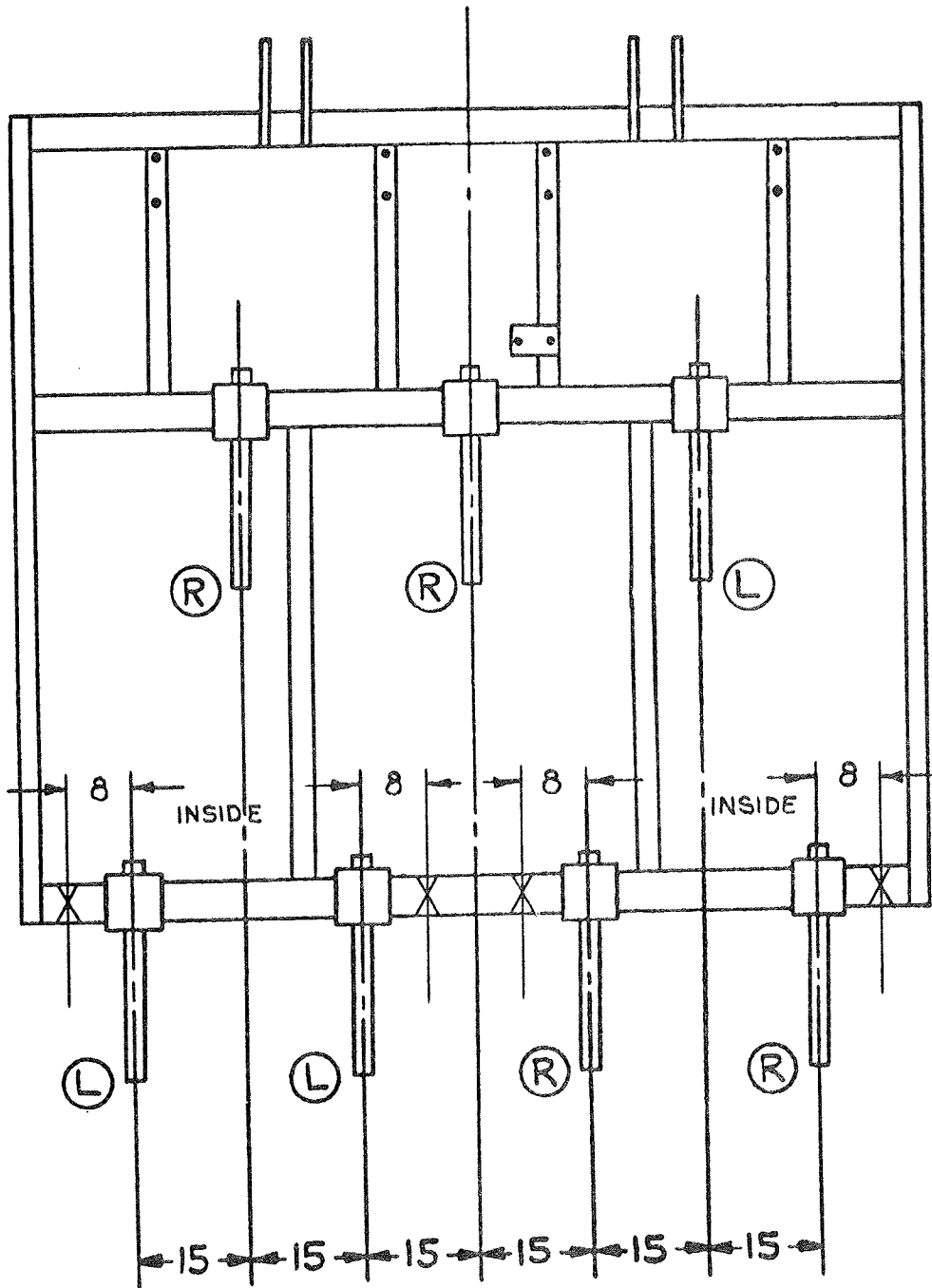
Check the bolts on the control linkages. These bolts are fitted with self locking nuts, and all linkages must be free to pivot so the drags can flex.

5 SHANK MODEL



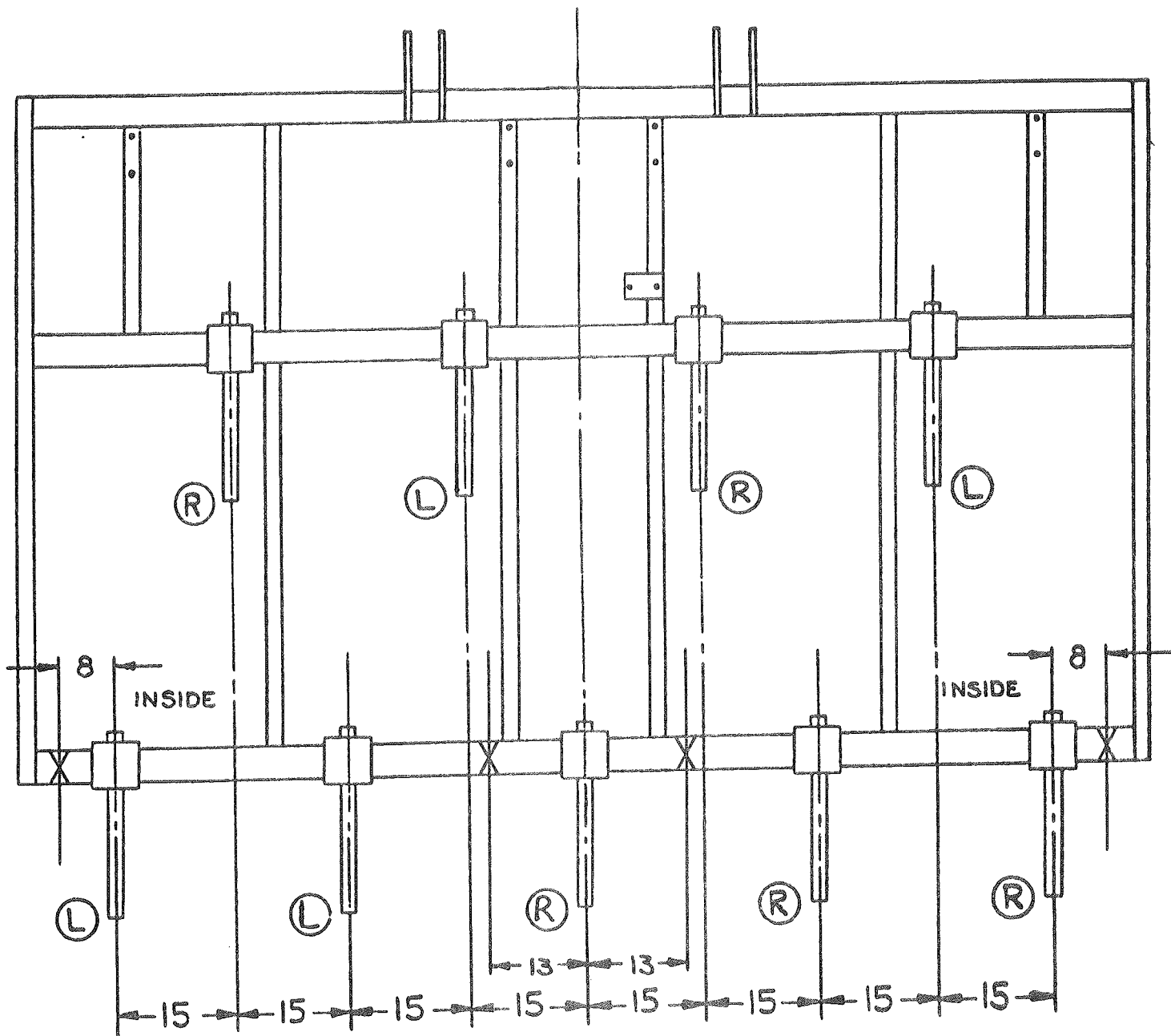
X ABOVE LOCATES THE SUPPORTS. "OUTSIDE" INDICATES THE PLACEMENT OF THE SUPPORT CHAINS.

7 SHANK MODEL



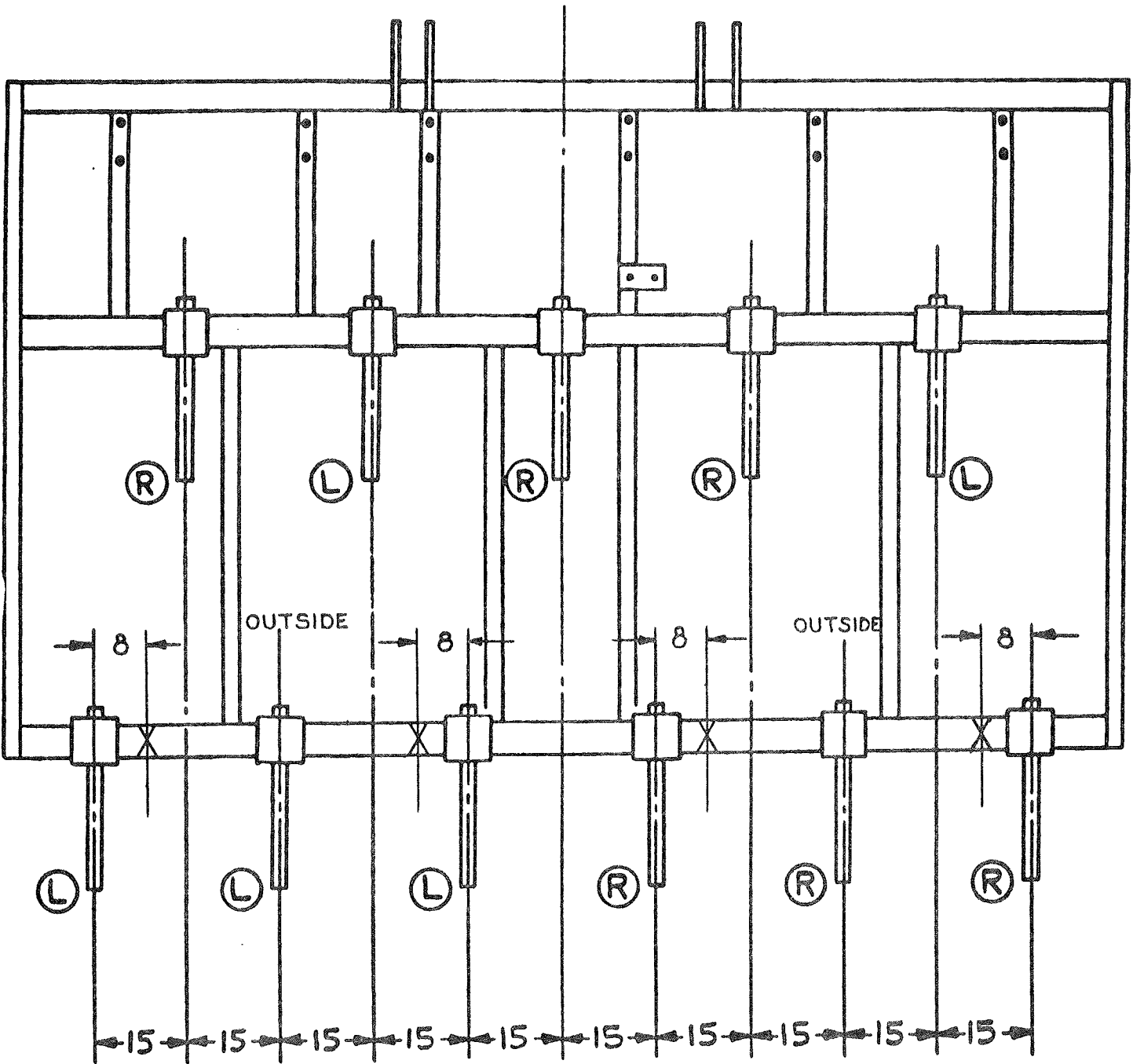
X ABOVE LOCATES THE SUPPORTS. "INSIDE" INDICATES THE PLACEMENT OF THE SUPPORT CHAINS.

9 SHANK MODEL



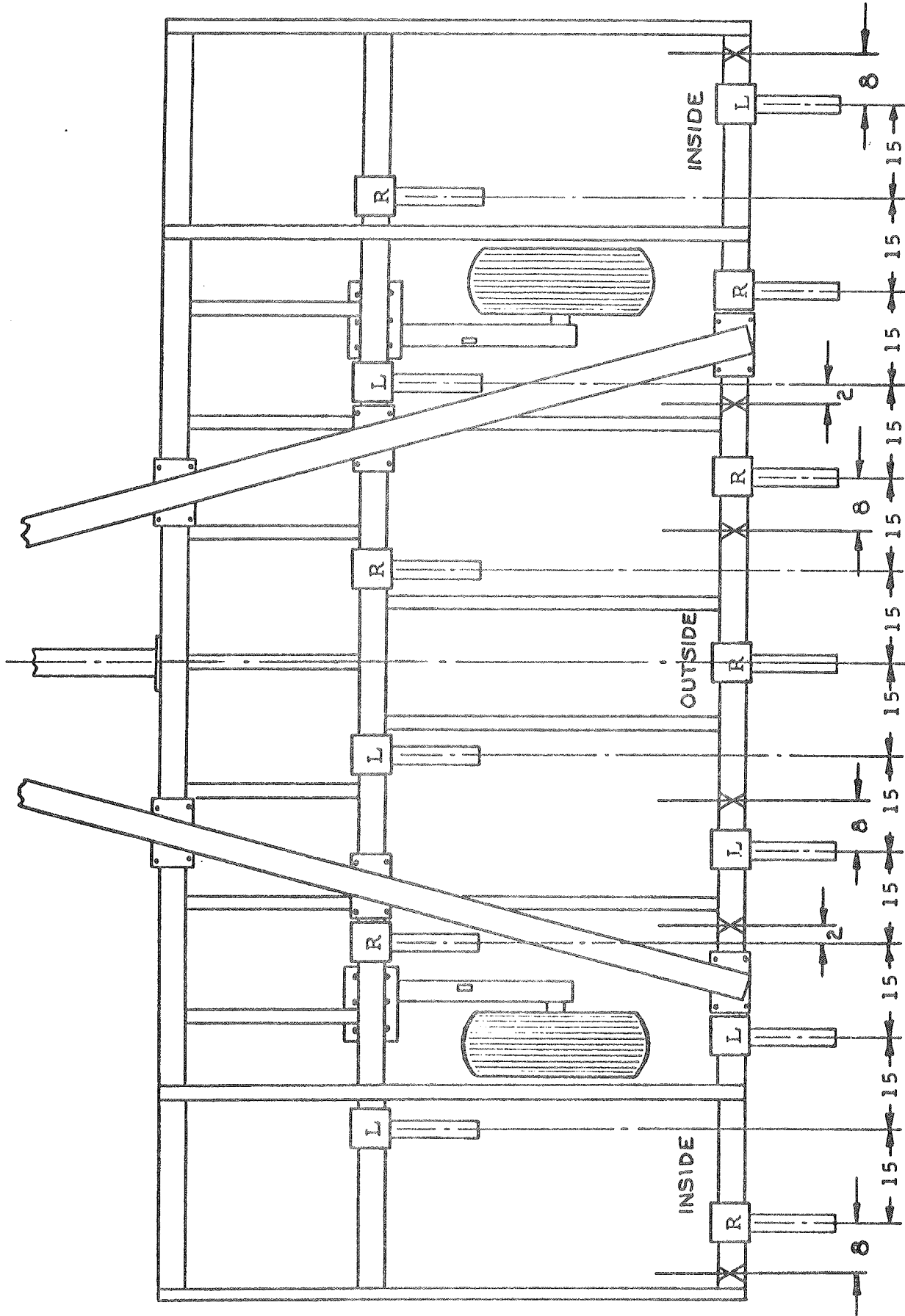
X ABOVE LOCATES THE SUPPORTS. "INSIDE" INDICATES PLACEMENT OF THE SUPPORT CHAINS.

11 SHANK MODEL

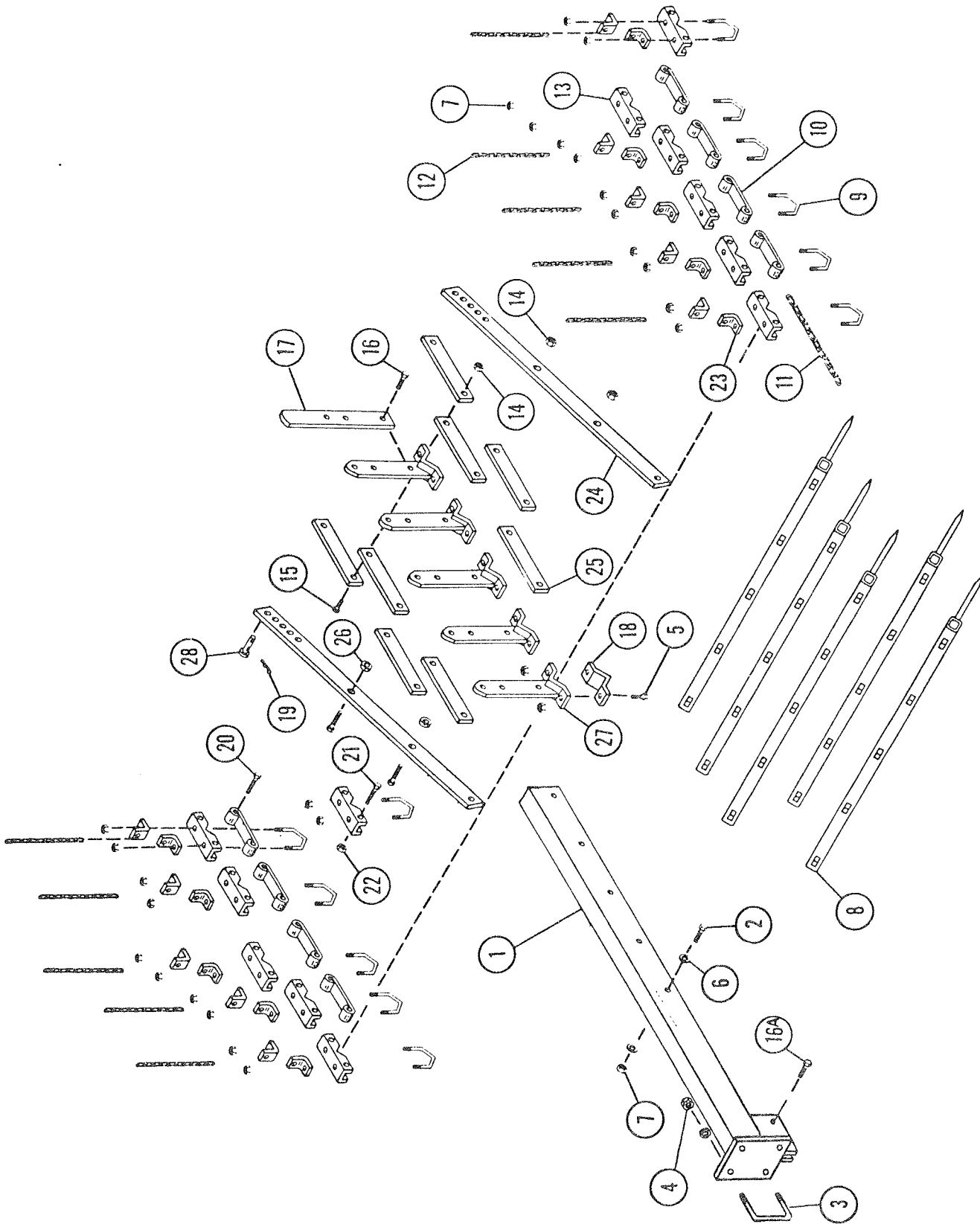


X ABOVE LOCATES THE SUPPORTS. "OUTSIDE" INDICATES PLACEMENT OF THE SUPPORT CHAINS.

13 SHANK MODEL



X ABOVE LOCATES THE SUPPORTS. "INSIDE" AND "OUTSIDE" INDICATES PLACEMENT OF THE SUPPORT CHAINS.



DRAG BAR ASSEMBLY

Index No.	Part No.	Description	Weight
1	6J-981	Drag Support	59.1
2	8C-528	Capscrew, 1/2-13 NC x 3" Long	.3
3	9D-989	U-Bolt, 5/8"-11 NC	.7
4	1C-392	Nut, 5/8"-11 NC	
	1B-166	Lockwasher, 5/8"	
5	1C-267	Capscrew, 1/2-13 NC x 1-1/2" Long	.1
6	9C-134	Flat Washer, 1/2" S.A.E.	
7	1C-390	Nut, 1/2-13 NC	
	1C-109	Lockwasher, 1/2"	
8	7J-77	Spike Bar Assembly (8 Spikes)	41.8
	6J-589	Spike Bar Assembly (9 Spikes)	47.3
	6J-588	Spike Bar Assembly (7 Spikes)	36.3
	7J-72	Spike Bar Assembly (6 Spikes)	30.8
9	6J-604	Clamp Bolt, 1/2"	.6
10	6J-601	Drag Link	.7
11	7J-75	Chain, 26 Links	2.7
12	7J-79	Chain, 11 Links	1.1
13	6J-603	Channel	1.3
14	5C-461	Locknut, 5/8"	
15	1D-522	Capscrew, 5/8-11 NC x 2-1/4" Long	.2
16	6C-421	Capscrew, 5/8-11 NC x 1-3/4" Long	.1
	2C-404	Capscrew, 5/8-11 NC x 2-1/2" Long	.2
	2C-400	Capscrew, 5/8-11 NC x 2" Long	.2
16A	4J-916	Capscrew, 7/16-14 NC x 1-1/2" Long	.1
	1C-179	Nut, 7/16-14 NC	
	1C-314	Lockwasher, 7/16"	
17	6J-608	Handle	2.4
18	6J-638	Clamp	1.5
19	4C-856	Hair Pin Cotter	
20	6J-661	Capscrew, 1/2-13 NC x 2-1/2" Long (Special)	.2
21	3D-121	Capscrew, 1/2-13 NC x 5-1/2" Long	.3
22	5C-392	Locknut, 1/2-13 NC	
23	6J-602	Chain Strap	.3
24	6J-610	Control Link	5.3
25	6J-612	10-1/2" Link	1.5
26	6J-609	Spacer	
27	6J-614	Control Arm	5.5
28	8C-523	Clevis Pin	.1

