



**Glencoe®**

---

# **CP40 CULTIPACKER 4' - 16' MODELS**

# **OPERATOR'S MANUAL**

Form number 1PD780598  
May, 1998

The symbol below calls your attention to instructions concerning your personal safety. The symbol is found throughout the manual as well as on the machine to point out specific areas of danger. Always read the messages that follow to be alert to the possibility of personal injury or death.

**HEED THE WARNING!**



**BE ALERT!**

**Your Safety  
Is Involved.**

---

## Table of Contents

---

### INTRODUCTION

### DEALER/CUSTOMER INFORMATION

TO THE DEALER: . . . . . 2

TO THE CUSTOMER: . . . . . 2

### SPECIFICATIONS

MODEL SPECIFICATIONS . . . . . 3

### SAFETY

SAFETY DECALS . . . . . 4

SAFETY PRECAUTIONS . . . . . 5

### TORQUE CHART

BOLT TORQUE CHART - COARSE THREAD. . . . . 8

### OPERATION

PRE-OPERATING CHECK LIST. . . . . 9

FIELD OPERATION . . . . . 9

PROCEDURE FOR HITCHING. . . . . 10

PROCEDURE FOR UNHITCHING . . . . . 10

### MAINTENANCE & SERVICE

ROLLERS. . . . . 11

LUBRICATION . . . . . 11

### TRANSPORT & STORAGE

TRANSPORT . . . . . 12

### TRANSPORT & STORAGE

SMV EMBLEM . . . . . 13

TRANSPORT CHAIN . . . . . 13

STORAGE . . . . . 13

### ASSEMBLY INSTRUCTIONS

PREPARATION. . . . . 15

LIGHT KIT ASSEMBLY 12', 14' and 16' Machines . . . . . 17

### OPTIONAL EQUIPMENT

TRANSPORT KIT. . . . . 25

SCRAPERS. . . . . 27

### PREDELIVERY INSPECTION & SERVICE REPORT

## NOTES

---

## INTRODUCTION

---

This manual is written purposely to acquaint new owners of the Glencoe® CP40 Cultipacker with the functions of the various component parts of the machine as well as the service and safe operation which is vital to long life and optimum performance. Read this manual completely before you begin operating your CP40 Cultipacker.

The terms “right” and “left”, “front” and “rear”, refer to the machine by facing in the direction of forward travel.



## DEALER/CUSTOMER INFORMATION

---

### TO THE DEALER:

#### Warranty Registration

A warranty registration form must be completed for each serial-numbered unit by the dealer and signed by both the dealer and the customer before or upon delivery. Distribute the copies according to instructions on the form.

#### Predelivery

Using the Predelivery Inspection and Service Report, Be sure the implement is completely set up, lubricated and in proper working order upon delivery to the customer.

#### Operator's Manual

The operator's manual is a very important part of the equipment purchase. Using the manual, be sure to instruct the owner and the operator regarding the following:

- Safety Precautions
- Operation and Adjustments
- Lubrication and Maintenance

Be sure to give this manual to the owner.

Serial No. \_\_\_\_\_

Date Purchased \_\_\_\_\_

### TO THE CUSTOMER:

#### Warranty Registration

Be sure to sign the registration form and keep your copy.

#### Know Your Equipment

Before operating the implement, read the operator's manual to become completely familiar with the machine before using it.

#### Left and Right Hand Sides of Machine

Stand behind the machine and face in the direction of forward travel to determine left hand (LH) and right hand (RH) sides of the machine.

#### Serial Number

The serial number plate is located on the hitch weldment. Record the serial number in the space below. Your dealer needs the serial number to give prompt, efficient service when ordering parts.

Safety is Important

- Develop and follow good safety practices and encourage others working with you to do the same.
- Always operate farm machinery in a careful, safe manner.
- Never attempt to adjust, clean or service the machine while it is in motion.
- Always shut off the tractor engine before leaving the seat.

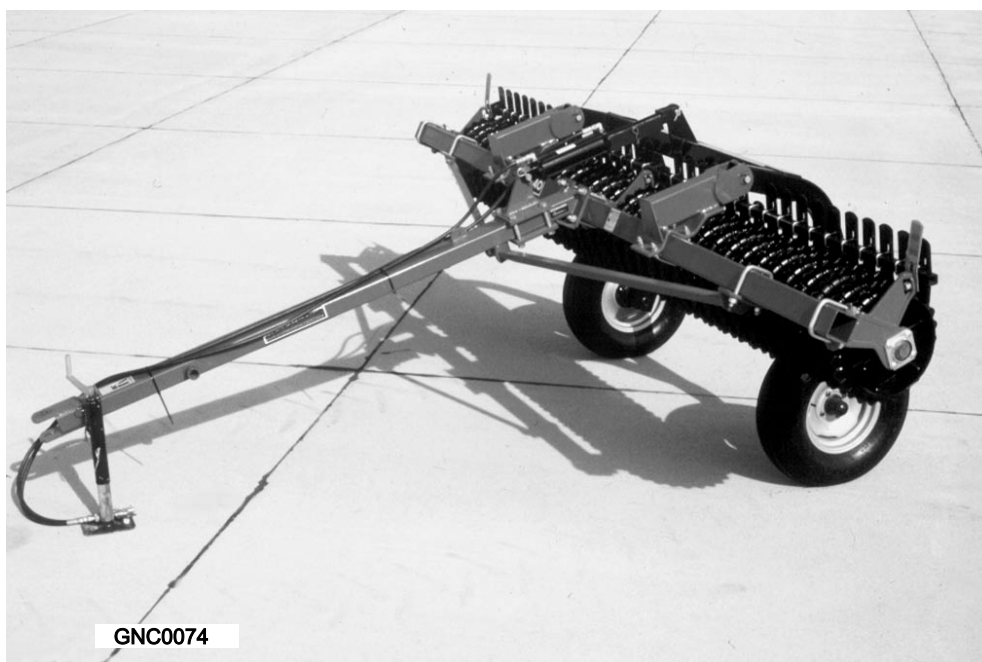
#### Authorized Service

For factory authorized service and parts, see your dealer. The dealer's trained service staff uses the latest service techniques. The trained parts personnel provide accurate and prompt delivery of quality parts.

## SPECIFICATIONS

Machine Type	CP40 CULTIPACKER (NON-FOLDING)		Quantity Wheels	Approx. Weight (Lbs.)
	Rolling Width	Transport Width		
Machine with 17" Smooth Rollers	4'-2"	4'-10"	12	585
	5'-11"	6'-6"	17	780
	8'-6"	9'-3"	24	1030
	9'-11"	10'-7"	28	1250
	12'-0"	12'-7"	34	1470
	14'-3"	14'-10"	40	1695
Machine with 19" Smooth Rollers	16'-4"	16'-11"	46	1920
	4'-2"	4'-10"	12	670
	5'-11"	6'-6"	17	900
	8'-6"	9'-3"	24	1200
	9'-11"	10'-7"	28	1445
	12'-0"	12'-7"	34	1710
Machine with 17" Crowfoot Rollers	14'-3"	14'-10"	40	1975
	16'-4"	16'-11"	46	2240
	4'-1"	4'-10"	8	510
	5'-8"	6'-6"	11	675
	8'-6"	9'-3"	16	895
	9'-9"	10'-7"	18	1075
Machine with 20" Crowfoot Rollers	11'-11"	12'-7"	22	1260
	14'-0"	14'-10"	27	1485
	16'-1"	16'-11"	31	1670
	4'-1"	4'-10"	8	560
	5'-8"	6'-6"	11	740
	8'-6"	9'-3"	16	990
Machine with 20" Crowfoot Rollers	9'-9"	10'-7"	18	1180
	11'-11"	12'-7"	22	1390
	14'-0"	14'-10"	27	1645
	16'-1"	16'-11"	31	1855

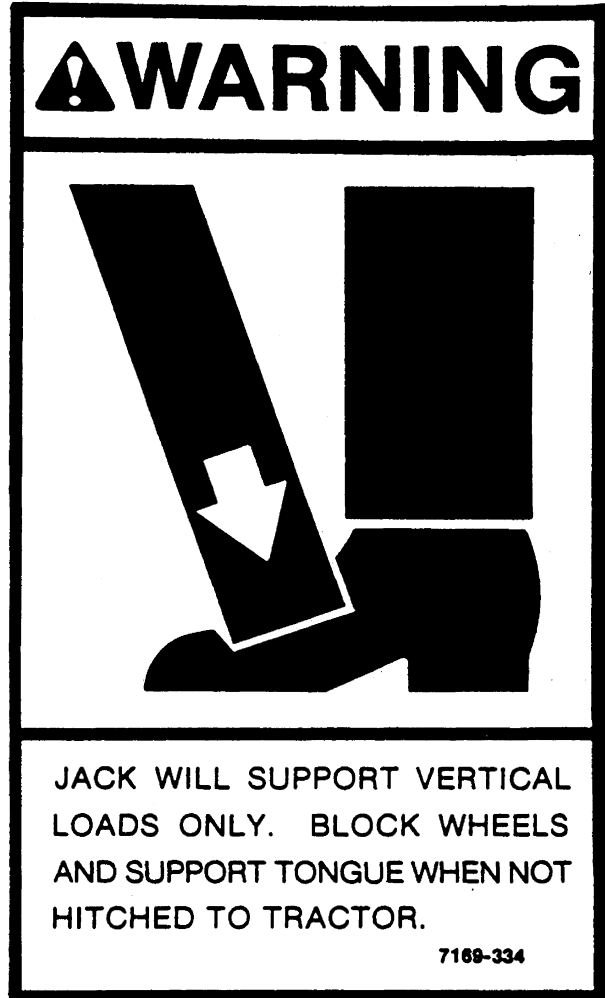
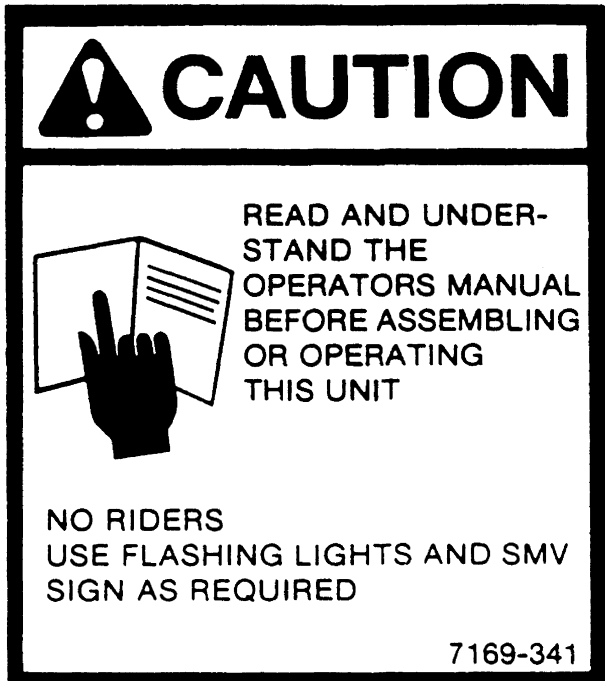
Options - Reversible point scrapers, hydraulic transport, tongue jack



## SAFETY DECALS

The following decals are installed to alert operators to hazards in specific machine areas. The decals are for personal safety... READ AND UNDERSTAND THE DECALS!

- Keep decals clean by wiping off regularly. Use a cleaning solution if necessary.
- Replace missing, damaged or painted over decals.



## SAFETY PRECAUTIONS

### SAFETY SYMBOL

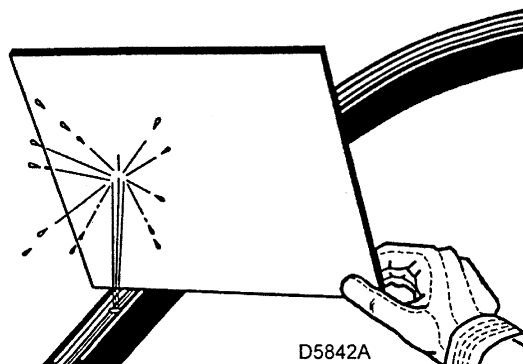


The symbol above calls your attention to instructions concerning your personal safety. The symbol is found throughout the manual as well as on the machine to point out specific areas of danger. Always read the messages that follow to be alert to the possibility of personal injury or death.

#### Think before you act !

- Avoid injury or fatal accidents. Read these safety precautions completely and carefully! Utilize these instructions when operating your machine.
- The operator should be a responsible adult familiar with farm machinery and trained in this machine's operations. Do not allow persons to operate this machine until they have read this manual and have developed a thorough understanding of the safety precautions and of how the machine works.
- To prevent injury or death, use a tractor equipped with a roll-over protection structure (ROPS) and seat belt. Do not paint over, remove or deface any safety decals on your equipment. Observe all safety decals and follow the instructions on them.
- Remember! Your best insurance is a careful and responsible operator. If there is any portion of this manual or of the machine's operation you do not understand, contact your local authorized Glencoe® dealer, or AGCO® Corporation.
- Always shut off tractor, shift to "Park" position (or shift to neutral), set brakes and before dismantling tractor or working around the machine.
- Remove tractor start key when tractor and machine will be unattended.

- Periodically inspect all moving parts for wear and replace with only authorized service parts if any excessive wear is present. If safety decals are missing, illegible, or damaged, they should be replaced.
- Keep safety decals free of dirt and grime.
- Never allow anyone to ride on this equipment.
- Clear the area of bystanders before starting operation.
- Do not clean, adjust or service when the machine is in motion.
- Do not leave tractor and machine unattended with tractor engine running.
- Avoid sharp turns using brakes. Drive slowly over rough ground, side hills and around curves to avoid tipping.
- Wear personal protective equipment (PPE) such as, but not limited to, protection for eyes, lungs, ears, head, hands and feet when operating, servicing or repairing equipment. Do not wear loose clothing or jewelry as it may entangle or catch on moving parts.
- Never use your hands to locate a hydraulic leak. Use a piece of wood or cardboard. Hydraulic fluid escaping under pressure can penetrate the skin causing serious injury.
- Openings in the skin and minor cuts are susceptible to infection from hydraulic fluid. If injured by escaping fluid, see a doctor at once. Without immediate medical treatment, serious infection can occur.



Hydraulic Leak Detection

## SAFETY PRECAUTIONS

---

### Before Operating:

- Give the machine a “once-over” for any loose bolts, worn parts, cracked welds, hydraulic leaks, frayed hoses, etc., and make necessary repairs. Follow the Performing Maintenance safety precautions.
- Be sure the machine is hitched properly to the machine using a 1" locking pin and transport chain.
- Be sure that there are no tools lying on or in the machine.
- Be sure all shields and guards are in place and functional.
- Completely familiarize yourself and other operators with the machine controls and operation before using the machine.

### During Operation:

- Do not allow others to be careless near this equipment.
- Keep hands and clothing clear of moving parts.
- Do not clean or lubricate or adjust your equipment while it is running.
- When halting operation, even periodically, set the tractor brakes, disengage the PTO, shut off the engine, and remove the ignition key.
- Pick the most level route possible when transporting. Avoid the edges of ditches or gullies and steep hillsides.
- As a precaution, always recheck the hardware on your machine following every 100 hours of operation. Correct all problems. Follow the Performing Maintenance Safety Precautions.

# SAFETY PRECAUTIONS

---

## Following Operation:

- Following operation, or when unhitching your machine, stop the tractor, set the brakes, disengage the PTO and all power drives, shut off the engine and remove the ignition keys.
- Do not park your equipment where it will be exposed to livestock for long periods of time. Machine damage and livestock injury could result.

## Highway Operation:

- Comply with your state and local laws governing highway safety, and movement of farm machinery on public roads.
- Use approved extremity lighting and warning devices to warn operators of other vehicles on the highway during transport.
- Use a SMV (Slow Moving Vehicle) emblem at all times.
- The minimum weight of the towing vehicle must be at least equal to the weight of the towed implement.
- Utilize transport chains. The transport chain should be adjusted so that the tongue of the towed machine will not touch the ground in case of loss of the hitch pin.
- Do not tow at speeds in excess of 15 MPH.
- Plan your route to avoid heavy traffic.
- Be a safe and courteous operator. Always yield to oncoming traffic in all situations, including narrow bridges, intersections, etc.
- Be observant of bridge load ratings. Do not cross bridges rated lower than the gross weight at which you are operating.
- Watch for obstructions overhead and to the side while transporting.





## Performing Maintenance:

- Good maintenance is your responsibility. A poorly maintained machine is an invitation to trouble.
- Be certain all moving parts have come to a complete stop before attempting to perform maintenance on your machine.
- Always use a safety support and block wheels. Never use a jack to support the machine.
- Securely block machine before servicing. Never work under a raised machine.
- Always use the proper tools or equipment for the job at hand.
- Follow the torque chart when tightening bolts and nuts.
- Replace all shields and guards after servicing and before starting up the machine.
- Never replace hex bolts with less than Grade 5 bolts unless otherwise specified. Refer to bolt torque chart for head identification marking.
- If machine has been altered in any way from original design, Glencoe® does not accept any liability for injury or warranty.

# TORQUE CHART

## BOLT TORQUE CHART - COARSE THREAD

Do not replace bolts with a grade other than the grade specified.

GRADE 1 Rd Hd Sq Nk Bolts	GRADE 2 No Marks	GRADE 5 3 Lines on Bolt Hd	GRADE 8 6 Lines on Bolt Hd	Metric Size	Torque Ft-Lbs for -			
					Grade 8.8	Grade 10.9	Grade 12.9	
				M4	2	2.9	3.6	
				M5	4	6	7	
				M6	7	10	11	
				M7	11	16	20	
				M8	18	25	29	
Bolt Size	Grade 1	Torque Ft-Lbs for -			Metric	Grade 8.8	Grade 10.9	Grade 12.9
		Grade 2	Grade 5	Grade 8				
5/16	5	8	13	18	M10	32	47	58
3/8	9	15	23	35	M12	58	83	100
1/2	21	35	55	80	M14	94	133	159
					M16	144	196	235
					M18	190	269	323
5/8	45	75	110	170				
3/4	78	130	200	280	M20	260	366	440
7/8	125	125	320	460	M22	368	520	628
1	190	190	480	680	M24	470	664	794
					M27	707	996	1205
					M30	967	1357	1630

## TIGHTENING STRAIGHT THREAD FITTINGS

The straight thread hydraulic fittings require precise tightening. Over-tightening of the hydraulic fittings will ruin the sealing surfaces and will require the replacement of the damaged parts.

Do not use any teflon tape or thread sealant on any JIC fittings or in o-ring port cylinders.

Proper initial tightening procedure depends on the mating parts being connected. Proceed as follows:

- An adapter fitting (37 flare) connected to a double flare tube assembly requires that the fitting be tightened finger tight and wrenched 1/2 turn (for single flare, 1/4 turn), 150-500 in. lbs.
- An adapter fitting (37 flare) connected to a hose requires fitting to be tightened finger tight and wrenched 1/4 turn, 150-500 in. lbs.
- An o-ring adapter fitting connected to a solid port requires the fitting to be tightened so that the backup washer contacts the face of the boss after the fitting has been properly positioned.

To re-tighten after initial tightening, as in service work, both tube and hose connections should be tightened finger tight and wrenched 1/4 turn, 150-500 in. lbs. O-ring fittings should be tightened as for initial assembly.

## OPERATION

---

Knowing how to operate this machine is important from the standpoint of performance as well as safety. The length of service you receive from this machine depends on proper machine operation, lubrication and preventive maintenance. Knowing how the machine works will also help you trouble shoot any problems that may occur.

Safety is of prime importance when operating this machine. Before you operate this machine, be sure to read the operating instructions and have a thorough understanding of them.

---

### PRE-OPERATING CHECK LIST

Before operating the cultipacker, follow the instructions.

1. Read and have a thorough understanding of the operator's manual.
  2. Be sure any one who will assist you in the operation of this machine knows how the machine operates.
  3. Know the machine's safety features and understand the safety precautions.
  4. Be sure the machine is hitched properly to the tractor.
  5. Be sure all lubrication points have been lubricated.
  6. Give the machine a "once over" for any loose hardware.
  7. Check optional transport wheel tire pressures. Pressure must be equal in both tires.
  8. Check hydraulic connections.
- 

### FIELD OPERATION

The correct preparation of the seedbed can be one of the most vital steps in the growing cycle.

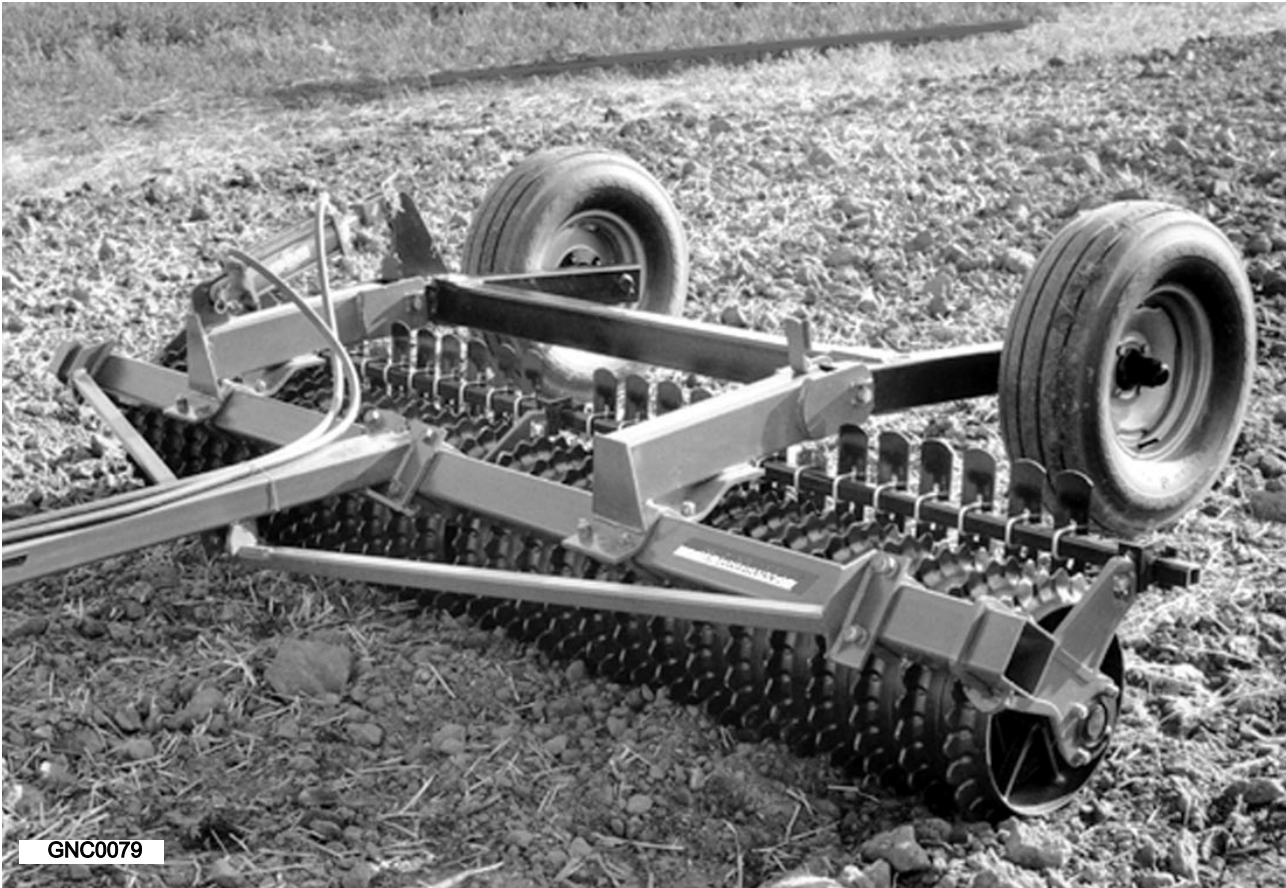
Properly firming and sealing the soil before and after planting can result in increased yields.

The most effective soil preparation will occur when operating between four and six miles per hour.

This speed range will permit constant, maximum soil firming.

---

## OPERATION



### PROCEDURE FOR HITCHING

With the Packer on a level surface and the transport wheels blocked:

1. Back the tractor so that the drawbar and the hitch clevis holes align.
2. Set the tractor brakes and turn the tractor engine off.
3. Install an agricultural hitch pin with a locking device. The hitch pin must be rated for the size of the tractor pulling the implement. Secure the locking device. Place optional tongue jack in the transport position.
4. Connect transport cylinder hydraulic lines (if equipped).

**Warning:** Be sure no one is between the tractor and the implement while the tractor is being positioned during the hitching operation.



### PROCEDURE FOR UNHITCHING

1. Position the tractor and the Packer on a level surface.
2. With the machine lowered to the ground, install blocks in front of and behind the packer wheels.
3. Relieve the hydraulic pressure to the transport cylinder.
4. Lower the optional tongue jack or place blocks under the hitch.
5. Remove the hitch pin carefully, the hitch could move when it is freed from the drawbar.

## MAINTENANCE & SERVICE

---

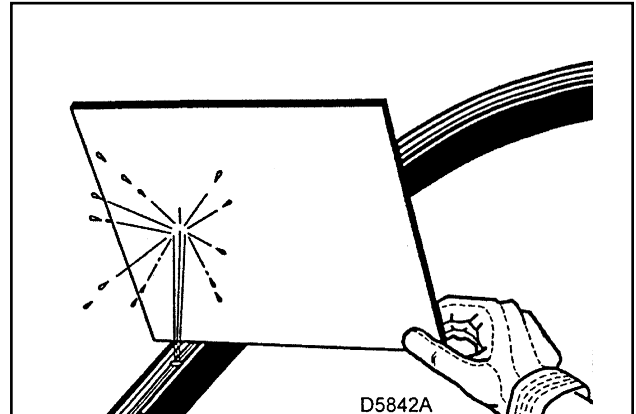
**Warning!** Never use your hands to locate a hydraulic leak. Use a piece of wood or cardboard. Hydraulic fluid escaping under pressure can penetrate the skin causing serious injury.



**Warning!** Openings in the skin and minor cuts are susceptible to infection from hydraulic fluid. If injured by escaping fluid, see a doctor at once. Without immediate medical treatment, serious infection can occur.



**Warning!** Securely block machine before servicing. Never work under a raised machine.



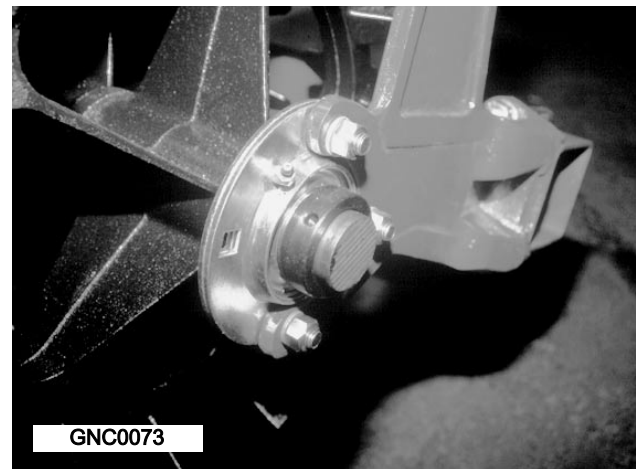
Hydraulic Leak Detection

---

### ROLLERS

For maximum roller life, the rollers need to touch each other across the gangs. This adjustment is made by loosening the u-bolts which attach the bearing standards. The bearing lock collars must also be loosened. Bump the standard and the u-bolt toward the center of the machine until the rollers touch each other. Retighten the bearing lock collars. Retighten the u-bolts to at least 150 foot pounds of torque. Be careful not to put an end thrust or side load on the bearings.

This adjustment will need to be made twice during the first 200 acres of operation. After the initial adjustments have been made, inspect the packer routinely and adjust rollers when necessary.



---

### LUBRICATION

Lubricate the gang bearings every 40 hours with a high quality SAE lithium base multi-purpose grease. Do not over grease. Excess grease will attract contaminants.

## TRANSPORT & STORAGE

### TRANSPORT

**Warning!** Comply with your state and local laws governing highway safety, lighting & marking, and the movement of farm machinery on public roads.

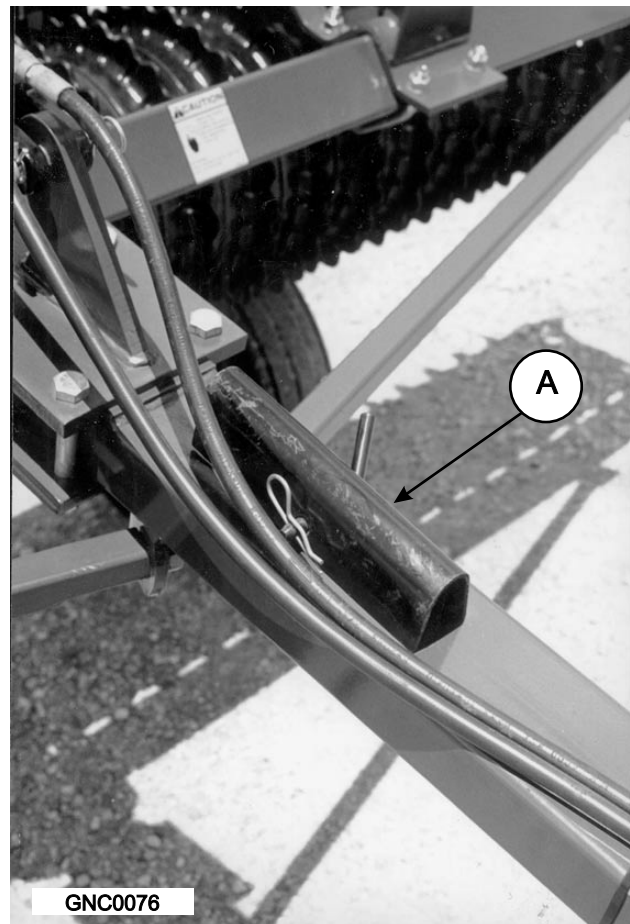
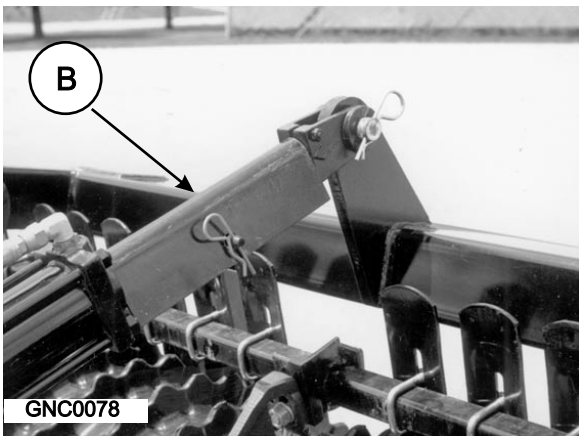


- The minimum weight of the towing vehicle should be at least equal in weight of the towed implement.
- Utilize transport chains. The transport chain should be adjusted so that the tongue of the towed machine will not touch the ground in the event the hitch pin is lost or breaks.
- Use approved extremity lighting and warning devices to warn operators of other vehicles on the highway during transport.
- Make sure the light harness is properly connected and all the lights are visible and working.
- Turn on flashing warning lights before driving on public roads, except when prohibited by law.
- Make sure reflectors are visible when transporting.
- Use a SMV (Slow Moving Vehicle) emblem at all times.
- Always drive at a reasonable speed to maintain control of the equipment. Do not tow at speeds in excess of 15 mph.
- Drive carefully. Plan your route to avoid heavy traffic and restrictions. Measure overall transport height and width to assure clearance.
- Be a safe and courteous operator.

Remove the transport lock (A) from storage position and install on the wheel hydraulic cylinder rod as shown (B).

Prior to transporting the unit always check wheel lug bolt tightness. Lug bolts should be tightened to the proper torque. Make sure tires are properly inflated.

Never transport implement with the tractor drawbar free to swing. The tractor drawbar should be locked in the center position for road transport.



## TRANSPORT & STORAGE

---

### SMV EMBLEM

Always have the SMV emblem clean and in full view of a vehicle approaching from the rear. The SMV (Slow Moving Vehicle) emblem must be on the implement if it is to be transported on public roadways. The SMV emblem is used to identify slow moving vehicles on public roadways (vehicles designed to travel at less than 25 mph). Check state and local laws regarding the placement and use of the SMV emblem.

### TRANSPORT CHAIN

When transporting the implement on public roadways, attach the transport chain to the tractor. This will control the implement in the event the hitch pin is lost or breaks.

After attaching the transport chain, check for proper adjustment by driving a short distance and turning to the left and right. Adjust chain as necessary to eliminate a too tight or loose chain.

---

### STORAGE

The service life of your machine will be extended by proper off season storage.

- Completely clean the unit.
- Repaint all areas where the original paint is worn off.
- Replace missing or damaged decals.
- Repair or replace any damaged or broken parts.
- Grease all soil-contacting surfaces of the ground tools to prevent rusting.
- Lubricate the unit.
- Store the unit in a clean dry place, protected from the weather and away from livestock.
- Coat any exposed cylinder rods with grease or oil to prevent rusting.
- When taking the implement from storage, follow the "Pre-Operating Checks" on page 6.



# ASSEMBLY INSTRUCTIONS

**Warning!** Keep clear of parts which may move or drop when removing shipping straps or brackets. Use hoists or blocks to move or support heavy pieces of the machine.

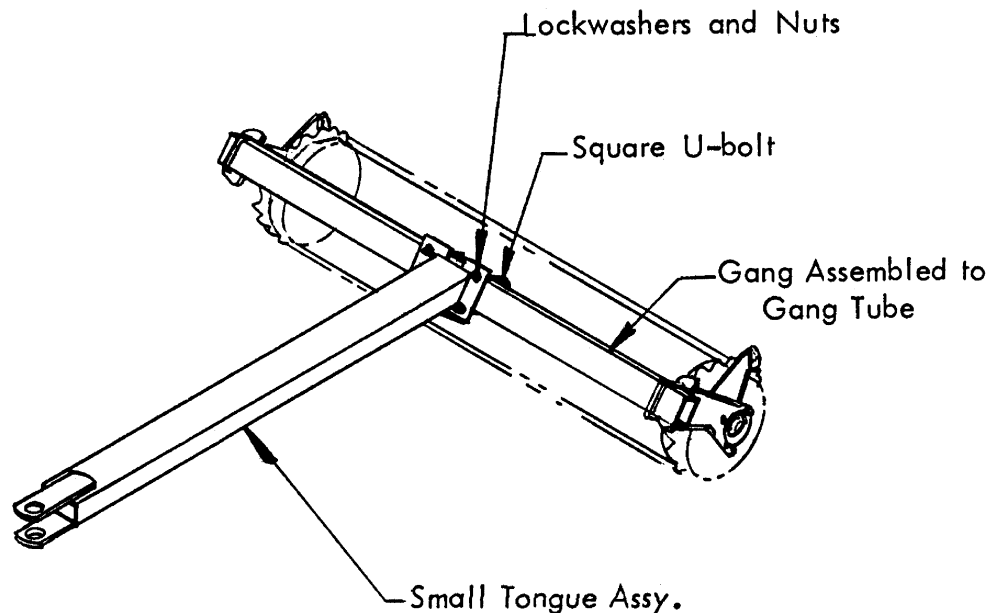


The terms “right” and “left”, “front” and “rear”, refer to the machine by facing in the direction of forward travel.

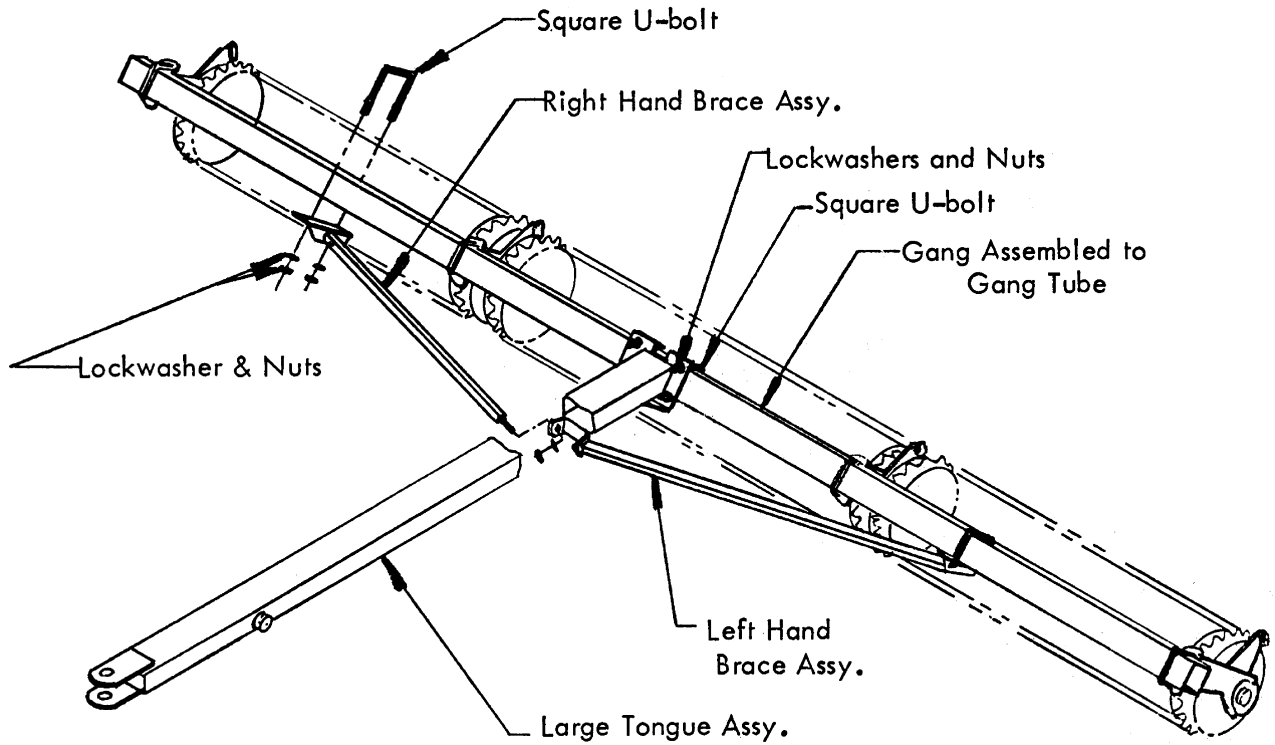
## PREPARATION

Check axle for end burrs or nicks which may have occurred during shipping. Using a flat file, smooth any rough areas to assure ease of assembly.

1. Slide rollers, spacers and hangers onto the axle. See pages 16 - 21 for the type of roller and the size of your machine. Notice that the diagrams on these pages are viewing the packer from the rear. It is important to turn the bearing hangers so the scraper mount is to the rear. The grease fittings should also be pointing to the rear. Making sure the rollers are touching each other, tighten the bearing lock collars.
2. Install the gang tube onto the assembled roller gang using the square shaped u-bolts. Be certain the decals on the tube are right side up and facing to the front. Carefully align the bearing hangers on the tube so the bearings are not pushing against each other creating an end thrust or side load.
3. For 4', 6' and 8' machines, a 5' tongue is used. Bolt tongue on center line of gang tube with square u-bolts, as shown.
4. For 10', 12', 14', and 16' machines, an 8' tongue is used. Bolt tongue on center line of the gang tube with square u-bolts. This tongue is also supplied with braces. Assemble the rod end of each brace to the mounting bracket on the tongue with a lockwasher and nut. Press the mount end of each brace against the gang tube and fasten with square u-bolts, as shown.



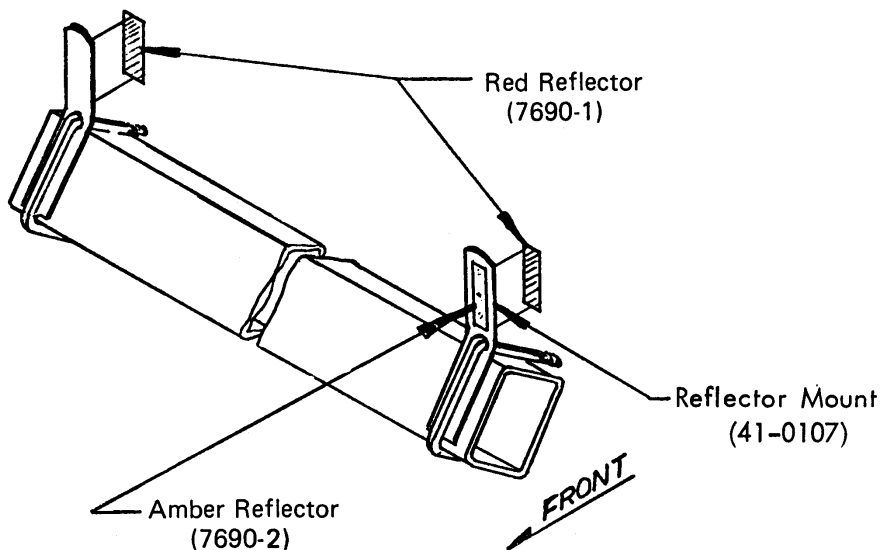
# ASSEMBLY INSTRUCTIONS



5. Install reflector mounts as shown. Bend vertical. Install amber reflector on the front of the left hand reflector mount. Install red reflectors on the rear of both reflector mounts.

6. Attach transport chain to the lug on the R. H. side of the hitch using 3/4" bolt, flatwasher and locknut.

7. Tighten all hardware.



# ASSEMBLY

---

## **LIGHT KIT ASSEMBLY 12', 14' and 16' Machines**

### **Tail Lights**

Position the tail light brackets and lights (red) on the main bar symmetrically between 2 feet to 5 feet of the centerline of the machine.

Be sure the lights can be seen from the rear.

### **Flasher Lights**

Position the flasher lights (amber) on the main frame within 16" of the outer most extremities of the machine.

Be sure the lights can be seen from the front and the rear.

### **Wire Harness**

Fasten wire harness to the frame members using nylon ties. Be sure the wires are not kinked or stretched and do not rub against sharp edges. Check for proper clearance when the machine is in the raised and lowered positions.

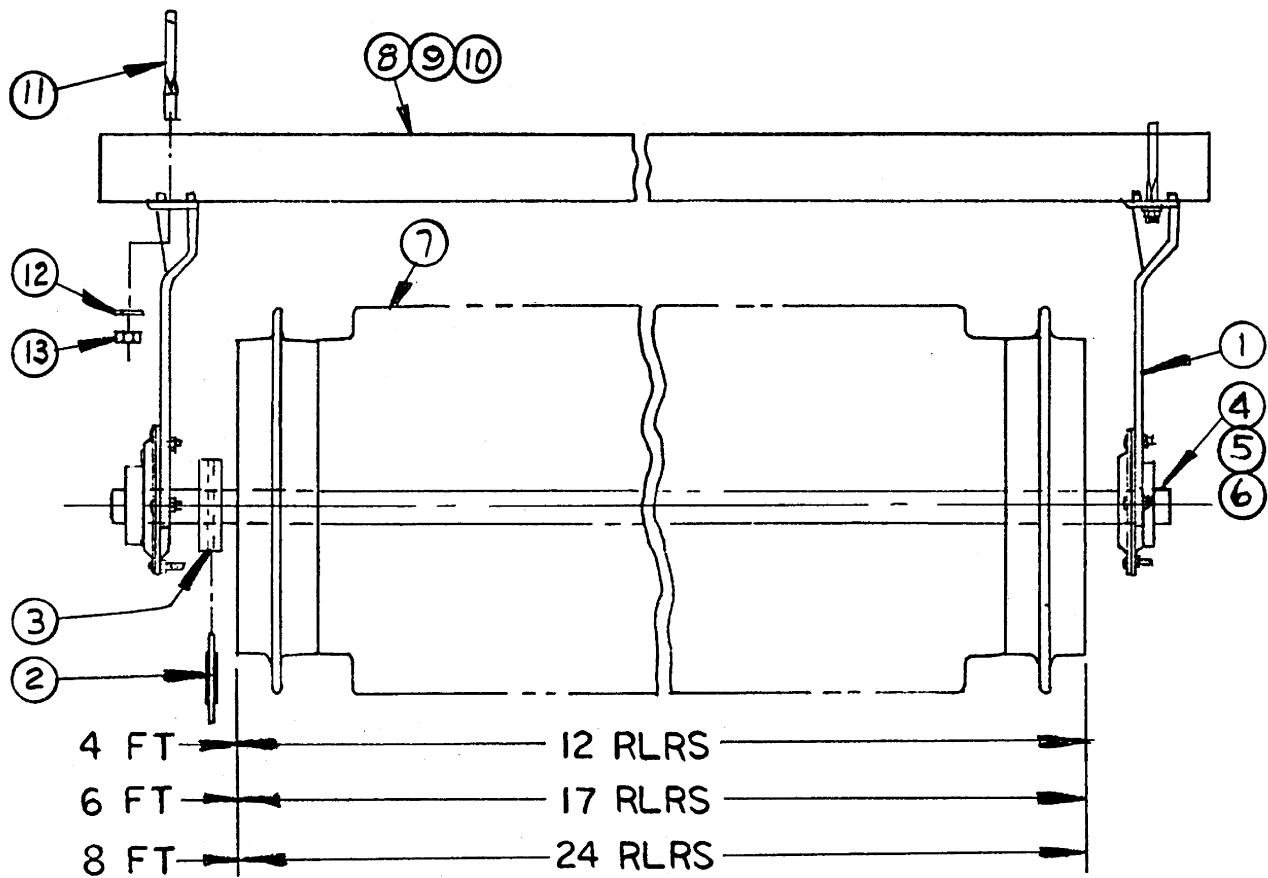
Route harness along the tongue towards the tractor. Allow adequate harness length to connect to tractor. Final harness length adjustments can be made prior to operation.

Be sure all lights work properly.

# ASSEMBLY

---

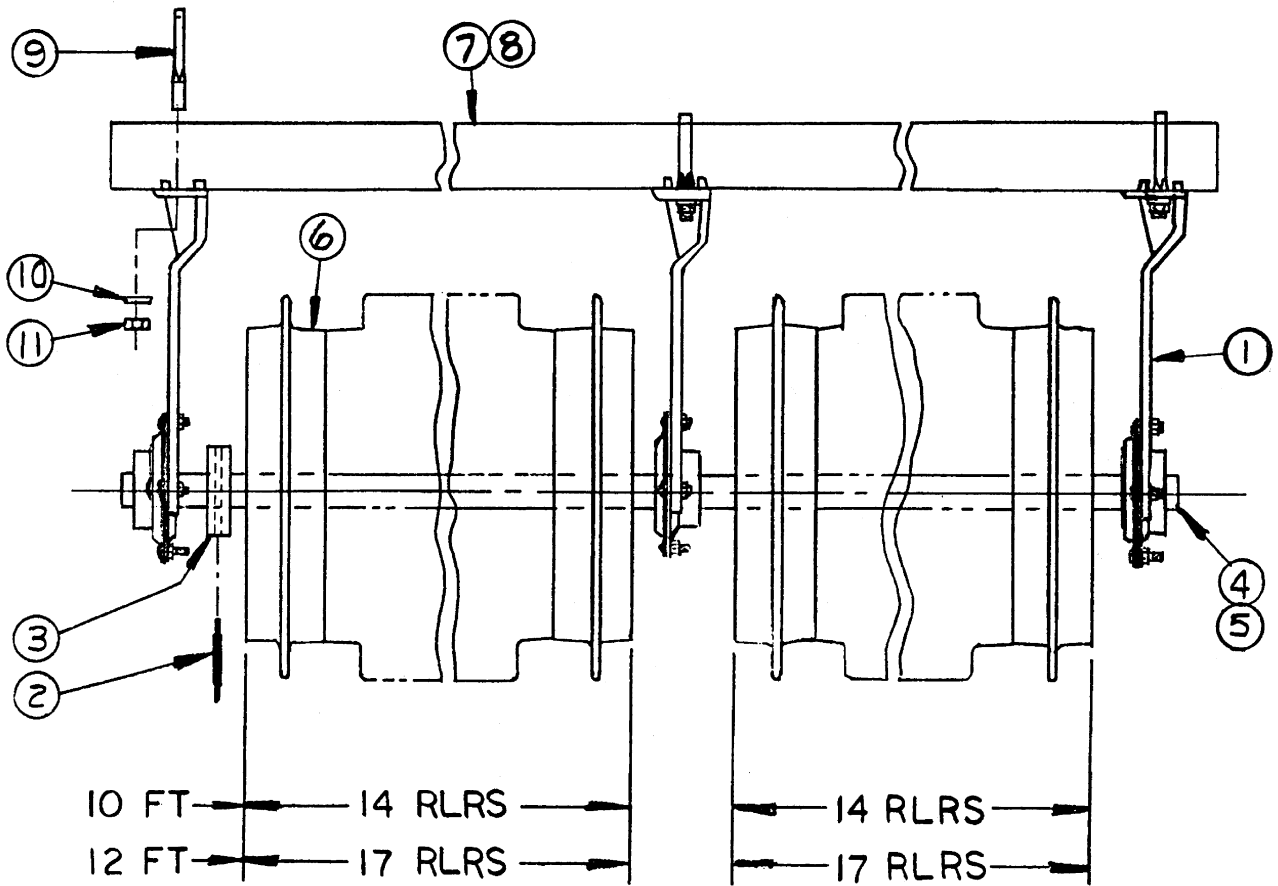
# ASSEMBLY



**4', 6', 8' SMOOTH ROLLER GANG ASSEMBLIES - FIGURE 2**

Item	Part No.	Description	Qty.	Qty.	Qty.
			4'	6'	8'
1	-----	Hanger Assembly	2	2	2
2	40-0013	Special Pin	1	1	1
3	40-0028	Lock Spacer	1	1	1
4	40-0014	Axle, 4'	1	-	-
5	40-0015	Axle, 6'	-	1	-
6	40-0016	Axle, 8'	-	-	1
7	41-0017	17" Roller or	12	17	24
	41-0019	19" Roller	12	17	24
8	40-0021	Gang Tube, 4'	1	-	-
9	40-0022	Gang Tube, 6'	-	1	-
10	40-0023	Gang Tube, 8'	-	-	1
11	41-0062	U-Bolt	2	2	2
12	16813	Washer, Lock 3/4"	4	4	4
13	16812	Nut, Hex 3/4-10	4	4	4

# ASSEMBLY

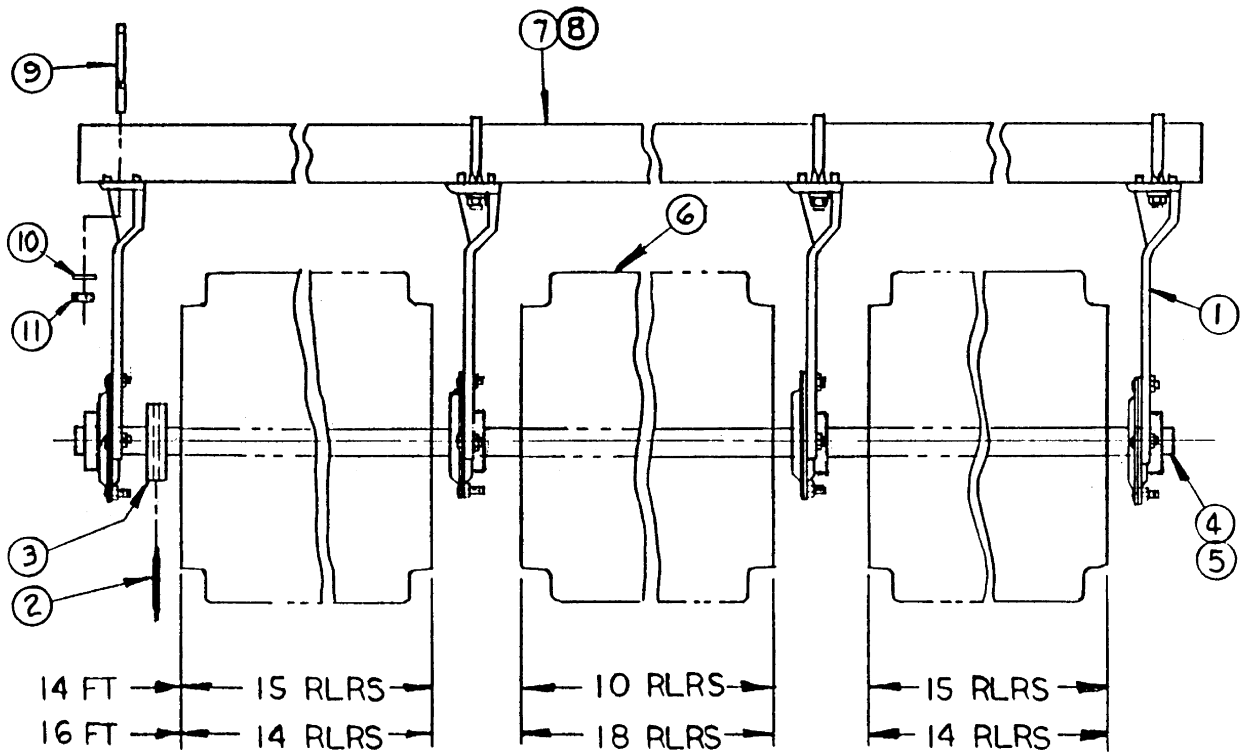


Note: Assembly shown as viewed from rear of machine.  
Install flanges so that the grease fittings point to the rear of the machine.

**10', 12' SMOOTH ROLLER GANG ASSEMBLIES - FIGURE 3**

Item	Part No.	Description	Qty. 10'	Qty. 12'
1	----	Hanger Assembly	3	3
2	40-0013	Special Pin	1	1
3	40-0028	Lock Spacer	1	1
4	40-0017	Axle, 10'	1	-
5	40-0018	Axle, 12'	-	1
6	41-0017	17" Roller or	28	34
	41-0019	19" Roller	28	34
7	40-0024	Gang Tube, 10'	1	-
8	40-0025	Gang Tube, 12'	-	1
9	41-0062	U-Bolt	3	3
10	16813	Washer, Lock 3/4"	6	6
11	16812	Nut, Hex 3/4-10	6	6

# ASSEMBLY

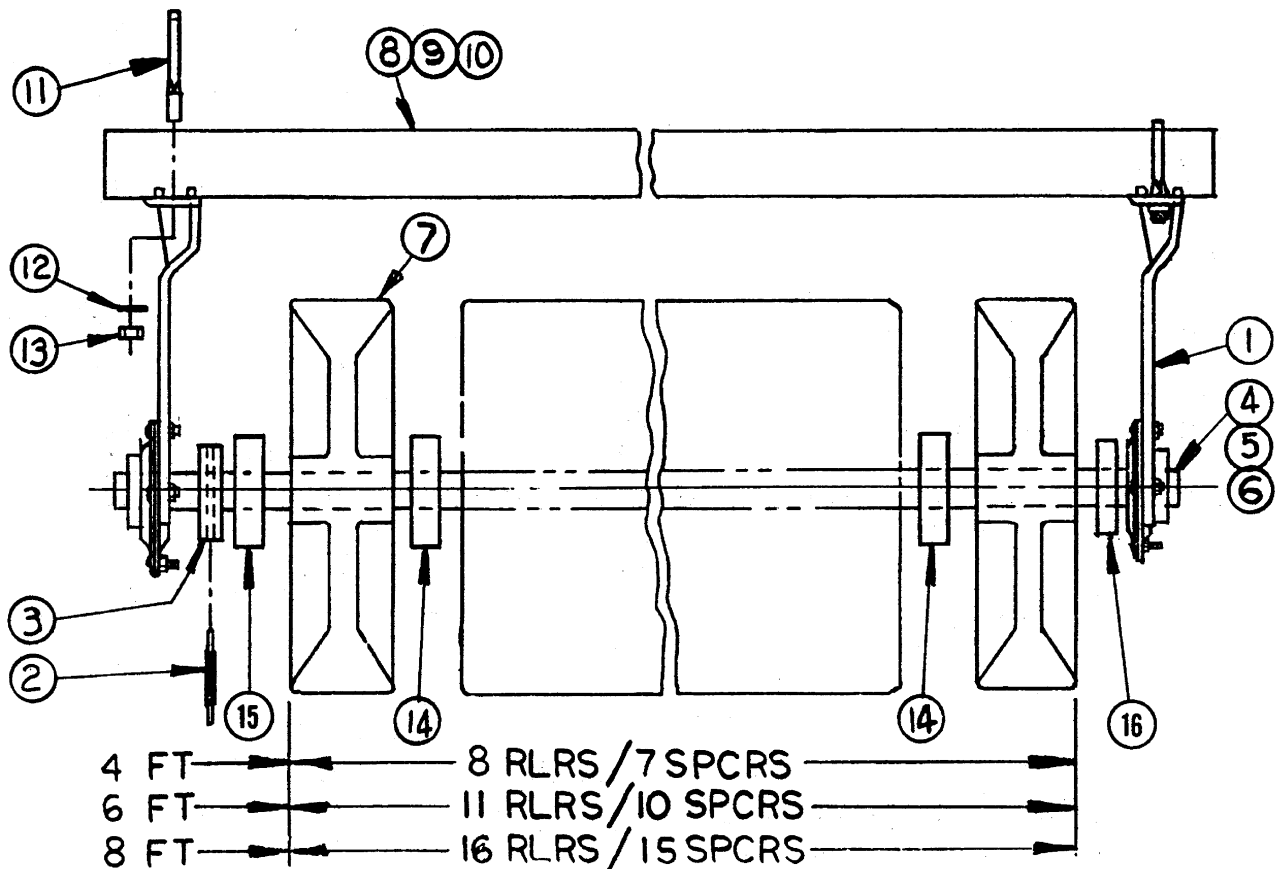


Note: Assembly shown as viewed from rear of machine  
Install flanges so that the grease fittings point to the rear of the machine.

**14', 16' SMOOTH ROLLER GANG ASSEMBLIES - FIGURE 4**

Item	Part No.	Description	Qty.	
			14'	16'
1	----	Hanger Assembly	4	4
2	40-0013	Special Pin	1	1
3	40-0028	Lock Spacer	1	1
4	40-0019	Axle, 14'	1	-
5	40-0020	Axle, 16'	-	1
6	41-0017	17" Roller or	40	46
	41-0019	19" Roller	40	46
7	40-0026	Gang Tube, 14'	1	-
8	40-0027	Gang Tube, 16'	-	1
9	41-0062	U-Bolt	4	4
10	16813	Washer, Lock 3/4"	8	8
11	16812	Nut, Hex 3/4-10	8	8

# ASSEMBLY



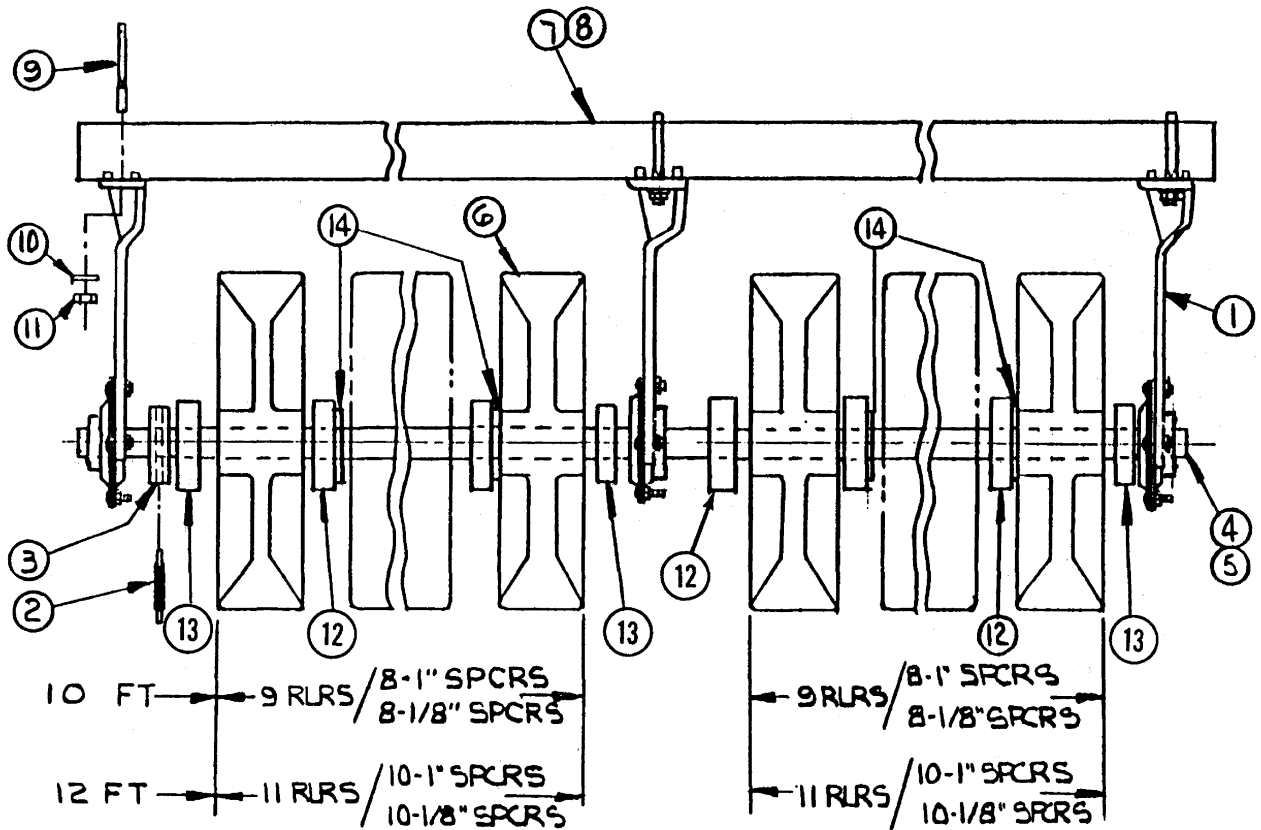
Note: Assembly shown as viewed from rear of machine  
 Install flanges so that the grease fittings point to the rear of the machine.

**4', 6', 8' CROWFOOT GANG ASSEMBLIES - FIGURE 5**

Item	Part No.	Description	Qty. 4'	Qty. 6'	Qty. 8'
1	----	Hanger Assembly	2	2	2
2	40-0013	Special Pin	1	1	1
3	40-0028	Lock Spacer	1	1	1
4	40-0014	Axle, 4'	1	-	-
5	40-0015	Axle, 6'	-	1	-
6	40-0016	Axle, 8'	-	-	1
7	21-0117 21-0120	17" Crowfoot Roller or 20" Crowfoot Roller	8 8	11 11	16 16
8	40-0021	Gang Tube, 4'	1	-	-
9	40-0022	Gang Tube, 6'	-	1	-
10	40-0023	Gang Tube, 8'	-	-	1
11	41-0062	U-Bolt	2	2	2
12	16813	Washer, Lock 3/4"	4	4	4
13	16812	Nut, Hex 3/4-10	4	4	4
14	1B706-C	Spacer, 1"	7	10	15
15	41-0073	Spacer, 11/16"	1	1	1
16	1D27206	Spacer, 1/8"	1	1	1

Note: Arrow on crowfoot roller indicates direction of rotation.

# ASSEMBLY



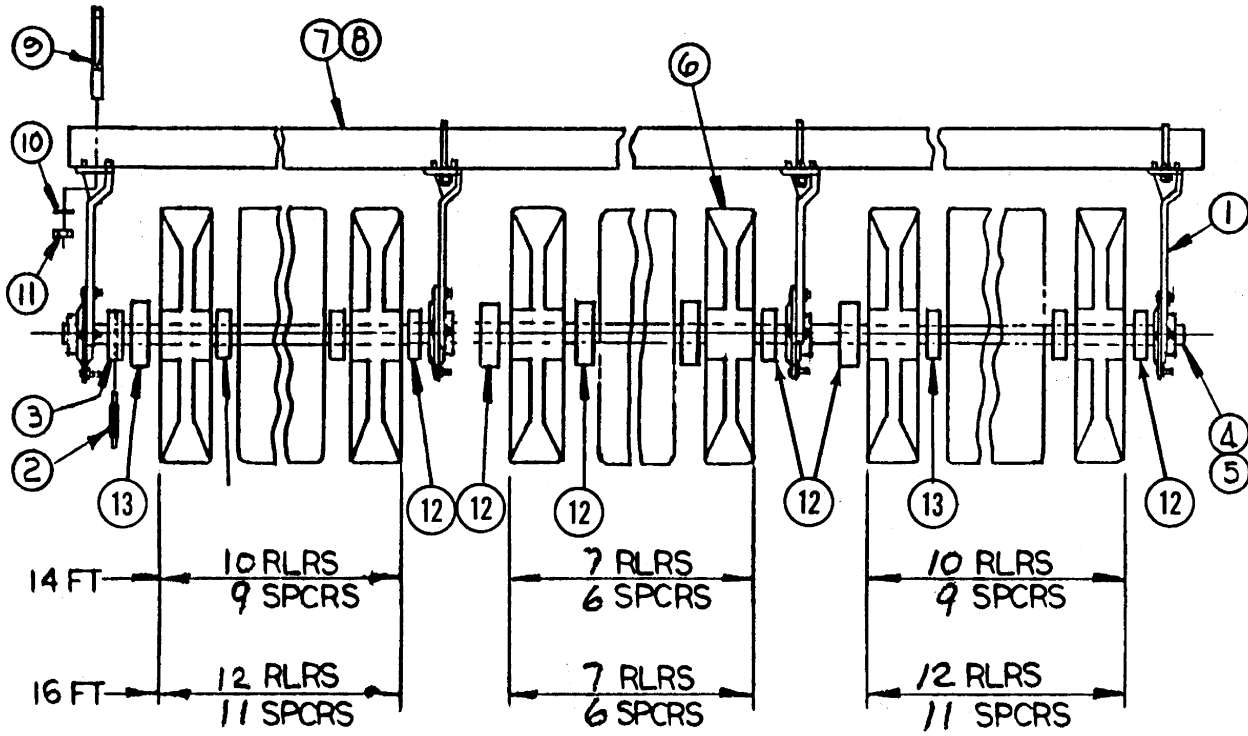
Note: Assembly shown as viewed from rear of machine.  
Install flanges so that the grease fittings point to the rear of the machine.

**10', 12' CROWFOOT ROLLER GANG ASSEMBLIES - FIGURE 6**

Item	Part No.	Description	Qty. 10'	Qty. 12'
1	-----	Hanger Assembly	3	3
2	40-0013	Special Pin	1	1
3	40-0028	Lock Spacer	1	1
4	40-0017	Axle, 10'	1	-
5	40-0018	Axle, 12'	-	1
7	21-0117	17" Crowfoot Roller or	18	22
	21-0120	20" Crowfoot Roller	18	22
7	40-0024	Gang Tube, 10'	1	-
8	40-0025	Gang Tube, 12'	-	1
9	41-0062	U-Bolt	3	3
10	16813	Washer, Lock 3/4"	6	6
11	16812	Nut, Hex 3/4-10	6	6
12	1B706-C	Spacer, 1"	17	21
13	41-0073-C	Spacer, 11/16"	3	3
14	1D27206-C	Spacer, Wear	16	20

Note: Arrow on crowfoot roller indicates direction of rotation.

# ASSEMBLY



Note: Assembly shown as viewed from rear of machine  
 Install flanges so that the grease fittings point to the rear of the machine.

**14', 16' CROWFOOT ROLLER GANG ASSEMBLIES - FIGURE 7**

Item	Part No.	Description	Qty. 14'	Qty. 16'
1	----	Hanger Assembly	4	4
2	40-0013	Special Pin	1	1
3	40-0028	Lock Spacer	1	1
4	40-0019	Axle, 14'	1	-
5	40-0020	Axle, 16'	-	1
6	21-0117	17" Crowfoot Roller or	27	31
	21-0120	20" Crowfoot Roller	27	31
7	40-0026	Gang Tube, 14'	1	-
8	40-0027	Gang Tube, 16'	-	1
9	41-0062	U-Bolt	4	4
10	16813	Washer, Lock 3/4"	8	8
11	16812	Nut, Hex 3/4-10	8	8
12	1B706-C	Spacer, 1"	13	13
13	41-0073-C	Spacer, 11/16"	17	21

Note: Arrow on crowfoot roller indicates direction of rotation.

## OPTIONAL EQUIPMENT

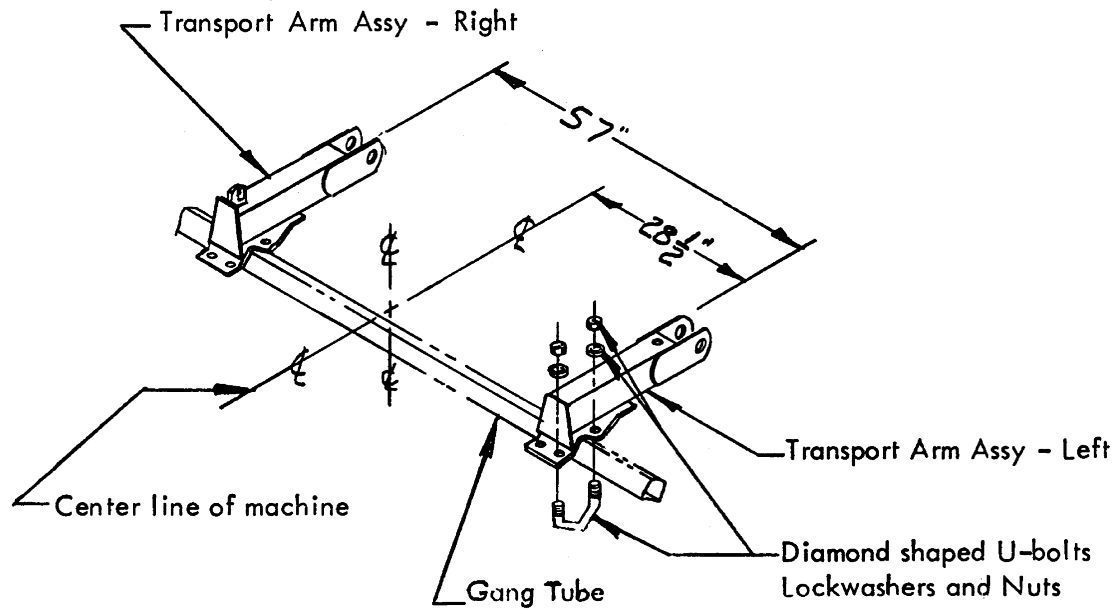
### TRANSPORT KIT

Transport Kits are available for all CP40 models.

The transport kit on the 4'-10", 6'-6" and 9'-3" machines can be equipped with a hydraulic cylinder or equipped with a ratchet jack for manual operation.

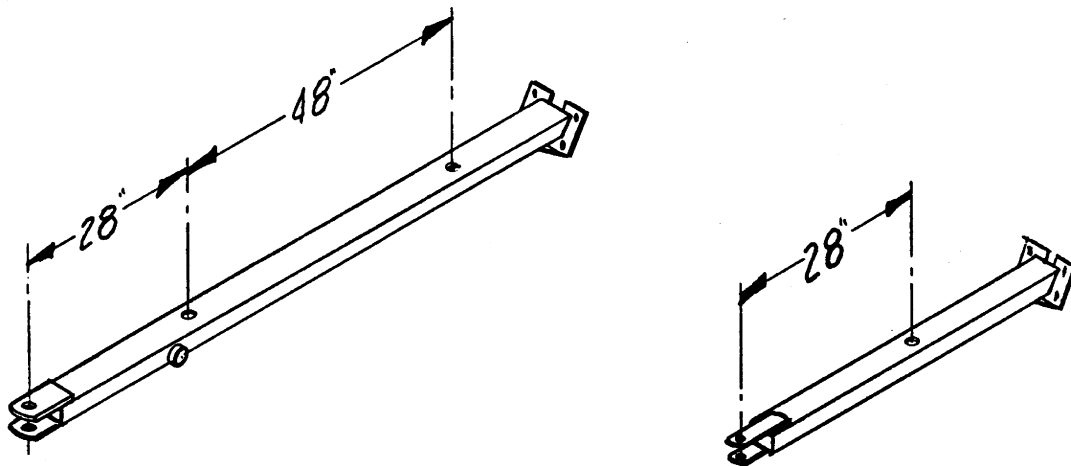
The transport kit on the 10'-7", 12'-7", 14'-10" and 16'-11" machines is operated hydraulically. A tongue jack is also required.

Install left-hand and right-hand transport arms on gang tube as shown using diamond shaped u-bolts, lockwashers and nuts. Do not tighten nuts at this time.



Attach transport axle to the transport arms. Mount wheel and tire assemblies to the transport axle. Install SMV mounting. Tighten gang tube u-bolts.

Drill 3/16" diameter holes in tongue for the hose clamps as shown.



## OPTIONAL EQUIPMENT

---

### 10'-7", 12'-7", 14'-10" and 16'-11" Machines Only

Attach cylinder lug to the tongue using two u-bolts, lockwashers and nuts.

Attach cylinder as shown.

Install flow restrictors and 90° elbows in to both cylinder ports. Attach hoses to the elbows. Clamp hoses to the tongue.



U-Bolts

## OPTIONAL EQUIPMENT

### SCRAPERS

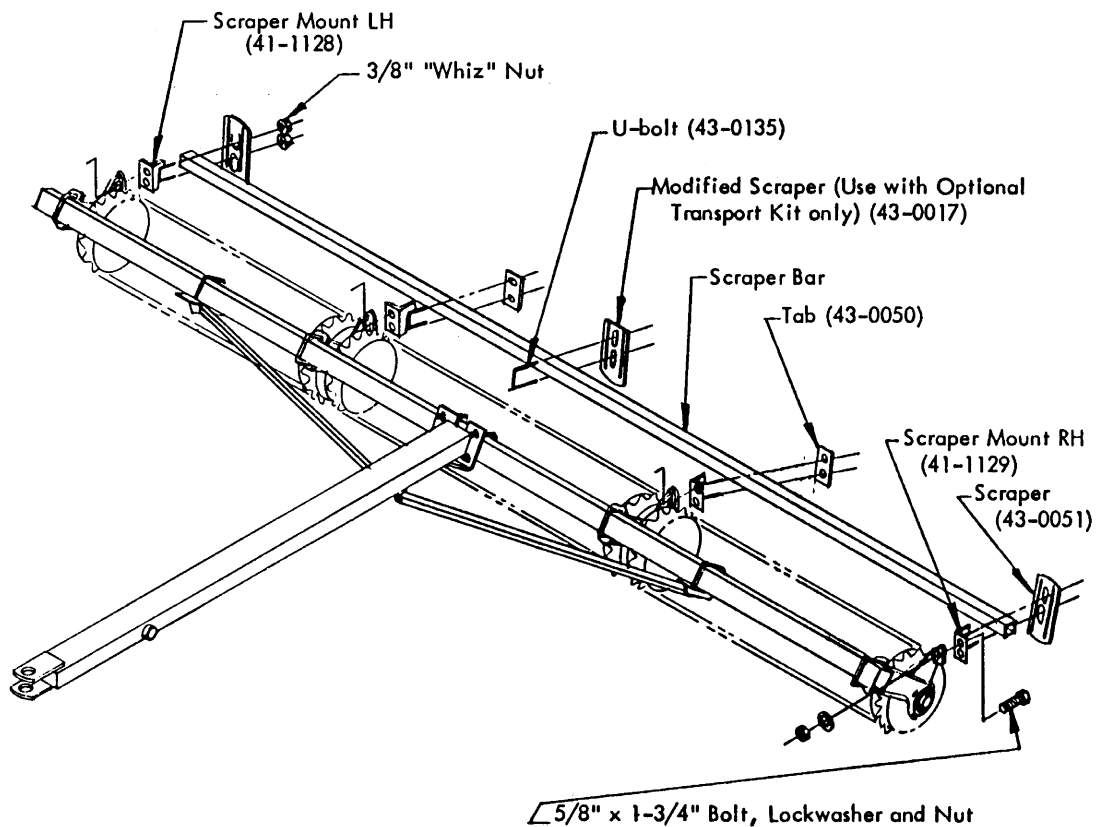
Assemble the scraper mounting bracket at each bearing hanger as shown, using 5/8" x 1-3/4" bolt, lockwasher and nut at each hanger. U-bolts should be towards the center of the machine. Use the top holes for the 17" rollers. Use the bottom holes for the 19" rollers.

Mount scraper bar to the mounts, using tab

(43-0050) on all the inner mounts and standard scrapers (43-0051) on the outer mounts. Fasten with 3/8" whiz nuts.

Mount standard scrapers between each wheel (except at the inner bearings) with 3/8" u-bolts and whiz nuts.

Modified scrapers are provided with the optional transport kit to be used under the transport arms.



# PREDELIVERY INSPECTION & SERVICE REPORT

---

## GLENCOE®CP40 Cultipacker

Serial No. \_\_\_\_\_ Model \_\_\_\_\_ Date \_\_\_\_\_

Serviced By \_\_\_\_\_

Sold  
To \_\_\_\_\_

(Name, Address, Telephone)

INSTRUCTIONS: All items listed below must be inspected and serviced as explained in the Operator's Manual and this form. As each task is completed, place a ( ) in the adjoining box. Retain a copy of the completed form in dealership files for future customer, dealer, and/or company reference.

Careful predelivery inspection and service will reduce need for unnecessary expensive follow-up service and will build owner confidence in the machine and dealership.

### Warning!



- **Stop Tractor engine, shift to neutral or park position and set brakes before dismounting from tractor.**
- **Clear bystanders from area before operating the machine.**

- Check for loose or missing parts and hardware.
- Lubricate the machine.
- Check bearing lock collars for tightness.
- Be sure all safety decals are in place and readable.
- Be sure highway transport chain, transport lights and SMV are properly installed.
- Check all hydraulic hoses, fittings, and cylinders for leaks or damage. Be sure quick couplers operate properly.
- Be sure the hydraulic system has been properly charged and purged of air before operating.
- Check that all hydraulic hoses and wiring harnesses have been properly restrained and confined to prevent contact with moving parts which could cause damage or excessive wear.









**AGCO CORPORATION**  
4205 River Green Parkway  
Duluth, Georgia 30096

Printed in U.S.A.