



Double Seeder Hitch BDH512 Parts Manual



LANDOLL COMPANY, LLC

1900 North Street
Marysville, Kansas 66508
(785) 562-5381

800-428-5655 ~ WWW.LANDOLL.COM

1 Illustrated Parts List

Drawbar	1-2
Pivoting Hitches	1-4
Rear to Front Hitch	1-6
Caster Wheel	1-8
Hydraulic Schematic	1-10
Hydraulic Layout	1-12
AG Harness	1-14
Track Remover Kit - Optional	1-16
Hydraulic Cylinder Assembly - 3 1/2 X 16	1-18

2 Numerical Index

3 Glossary

Illustrated Parts List

Instructions for Ordering Parts

**** Repair parts must be ordered through an authorized dealer ****

DEALER INSTRUCTIONS FOR ORDERING PARTS FROM LANDOLL PARTS DISTRIBUTION CENTER

PHONE #: 800-423-4320 OR 785-562-5381

FAX #: 888-527-3909

ORDER ONLINE: Dealer.landoll.com

IDENTIFICATION PLATE

See Figure 1-1 for the identification plate, which lists the model number and serial number of the equipment, and is located on the right side of the Brillion Double Seeder Hitch.

SERIAL NUMBER NOMENCLATURE

The serial number for the Brillion Double Seeder Hitch is located on the identification plate. The following information will help decode the Landoll serial number.

ASE2000100 = xxmysssss

xx	= model series (i.e. "AS" for all Agricultural Seeders)
m	= month of year of manufacture (ex. "E" means June. The letter I is not used.)
yy	= last 2 digits of the year manufactured (ex. "20" means 2020)
sssss	= Sequential number used to track warranty and service information.

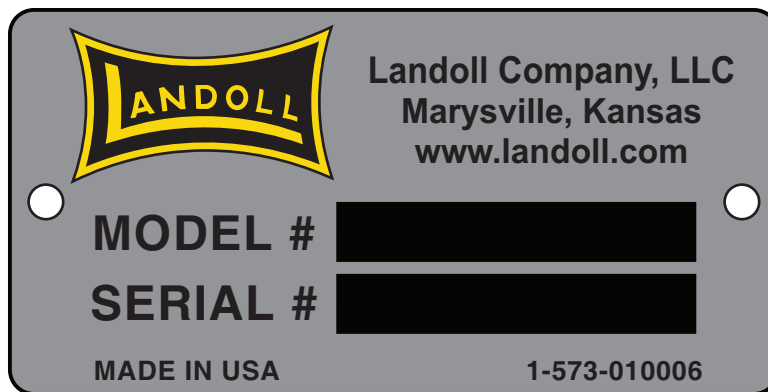
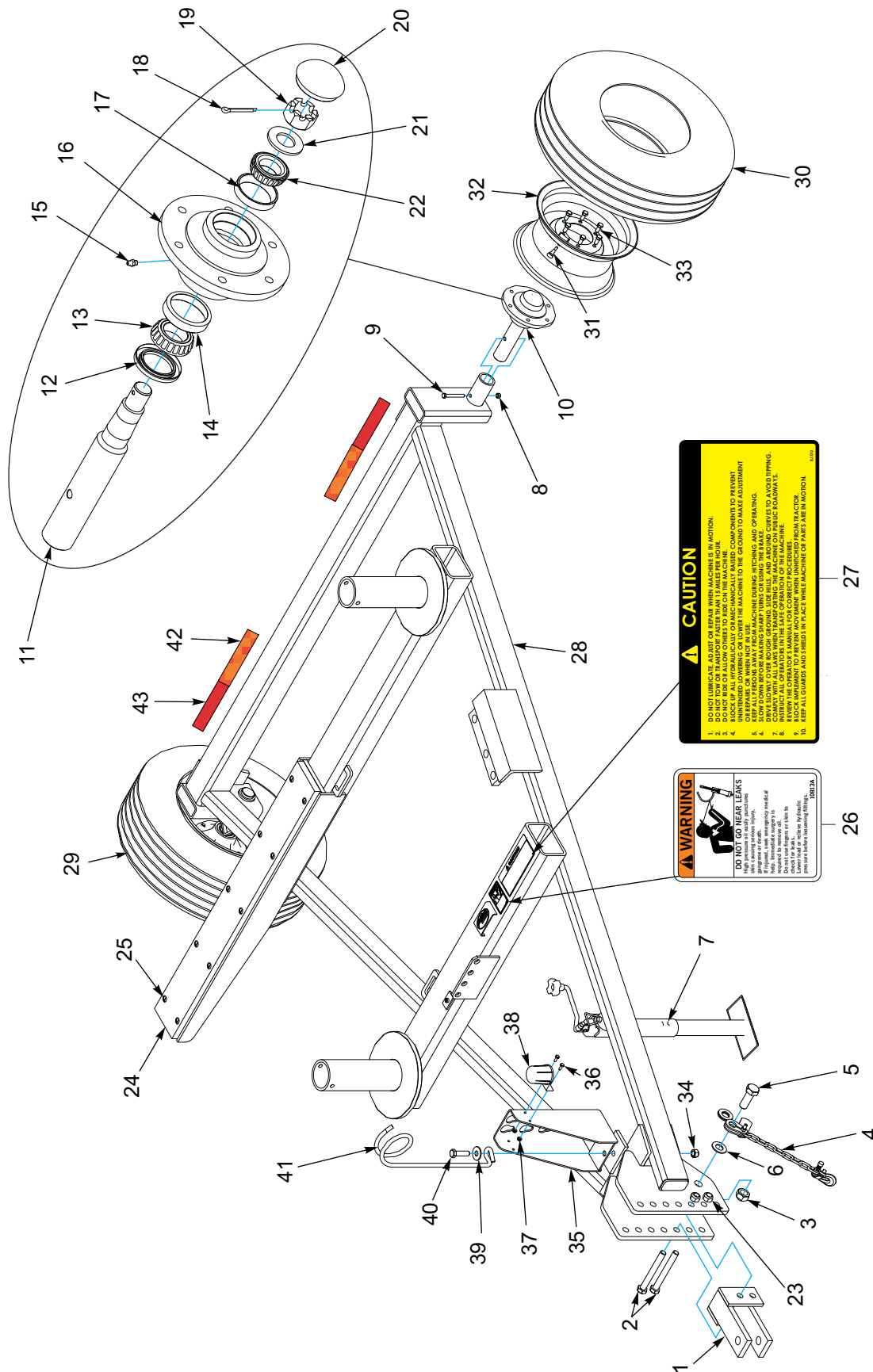


Figure 1-1: Identification Plate



CAUTION

1. DO NOT LUBRICATE, ADJUST OR REPAIR WHEN MACHINES IN MOTION.
 2. DO NOT TOW OR TRANSPORT FASTER THAN 15 MPH (24 KM/H).
 3. LOCK UP ALL HYDRAULICALLY OR MECHANICALLY BASED COMPONENTS TO PREVENT MOVEMENT WHEN MAINTENANCE IS REQUIRED.
 4. BLOCK UP ALL HYDRAULICALLY OR MECHANICALLY BASED COMPONENTS TO PREVENT MOVEMENT WHEN NOT IN USE.
 5. SLOW DOWN BEFORE MAKING SUDDEN TURNS OR STOPPING.
 6. SLOW DOWN BEFORE MAKING SUDDEN TURNS OR STOPPING.
 7. DRIVE SLOWLY OVER ROUGH, SLOPED, SIDE HILLS, AND AROUND CURVES TO AVOID TIPPING.
 8. INSTRUCT ALL OPERATORS IN THE SAFE OPERATION OF THE MACHINE.
 9. BLOCK UP FRONT TO PREVENT MOVEMENT WHEN UNATTACHED FROM TRACTOR.
 10. KEEP ALL LIMBS AND FEET IN PLACE WHILE MACHINE OR PART IS IN MOTION.

WARNING

DO NOT GO NEAR TILTS

High pressure and safety practices may cause injury.
 High pressure energy is stored in hydraulic lines.
 Do not use any repair or test to check for leaks.
 Connect to all or release hydraulic pressure before reworking.

Figure 1-2: Drawbar

Drawbar

ITEM	PART NUMBER	DESCRIPTION	QTY.
1	4K636	HITCH	1
2	100855	SCREW, HHCS, 3/4-10 X 6-1/2, GR5	2
3	1-512-010005-19	NUT 1-8 HEX SLF-LOCKING, GRB	1
4	141433	SAFETY CHAIN 11,000LB	1
5	1-654-010065-08	SCREW, HX CP 1-8UNC X 2 3/4, GR5	1
6	1-861-010032-24	WASHER FL 1IN NARROW, ZP	3
7	3J880	DRAWBAR, JACK	1
8	1-512-010005-05	NUT, HEX, SLFLKG GRB 3/8-16	2
9	1-654-010051-13	SCREW, HX CP, 3/8-16UNC X 3, GR5	2
10	6J766	HUB & SPINDLE ASM (INCLUDES ITEMS 11-22)	2
11	6J765	SPINDLE	2
12	6D338	SEAL	2
13	5C480	CONE, BEARING	2
14	5C479	CUP BEARING	2
15	1-298-010001-1	ZERK FITTING 1/4 SAE (1/15/2011 AND AFTER)	2
15	9D923	GREASE FITTING (1/8 NPT) (11/14/2011 AND PRIOR)	2
16	6D336	WHEEL HUB - 6 BOLT	2
17	5C914	BEARING CUP, TIMKEN	2
18	1C788	COTTER PIN (3/16 X 1 1/2)	2
19	1-516-010001-20	NUT, HX SLOT 1-14	2
20	6D337	HUB CAP	2
21	1-861-010032-24	WASHER FL 1IN NARROW, ZP	2
22	5C913	BEARING CONE, TIMKEN	2
23	1-512-010005-15	NUT, HEX SLFLKG GRB 3/4-10	4
24	2P447	TOP PLATE	1
25	2P449	FLAT HD MACH SCREW	10
26	3K706	DECAL-WARNING HYDRAULIC LEAKS	1
27	8J310	DECAL - CAUTION	1
28	1P878	DRAWBAR	1
29	7K804	WHEEL 7K802/NO TUBE/6D312 (INCLUDES ITEMS 30-32)	2
30	7K802	TIRE-27 X 9.50-15 NHS-10 PLY	2
31	8J792	VALVE STEM-TUBELESS	2
32	6D312	WHEEL - 15X8LB - 6 BOLT	2
33	5C100	WHEEL BOLT 1/2-20 X 1 GR5, ZP	12
34	1-512-010005-13	NUT, HEX SLFLKG GRB 5/8-11	1
35	8K885	HOSE HOLDER	1
36	1-654-010047-04	SCREW, HEX CAP, 1/4-20 X 3/4, GR5	2
37	108417	NUT SPIRAL 1/4-20HX FG	4
38	8K664	CONNECTOR HOLDER (105728) (7 PIN)	1
39	1-861-010032-19	WASHER, FLAT 5/8 W, ZP/CD	1
40	1-654-010059-06	SCREW, HEX CAP 5/8-11 X 2-1/4, G5	1
41	6D333	HOSE SUPPORT	2
42	528938	STRIPE, ORANGE	2
43	528933	REFLECTOR - RED	2

ILLUSTRATED PARTS LIST

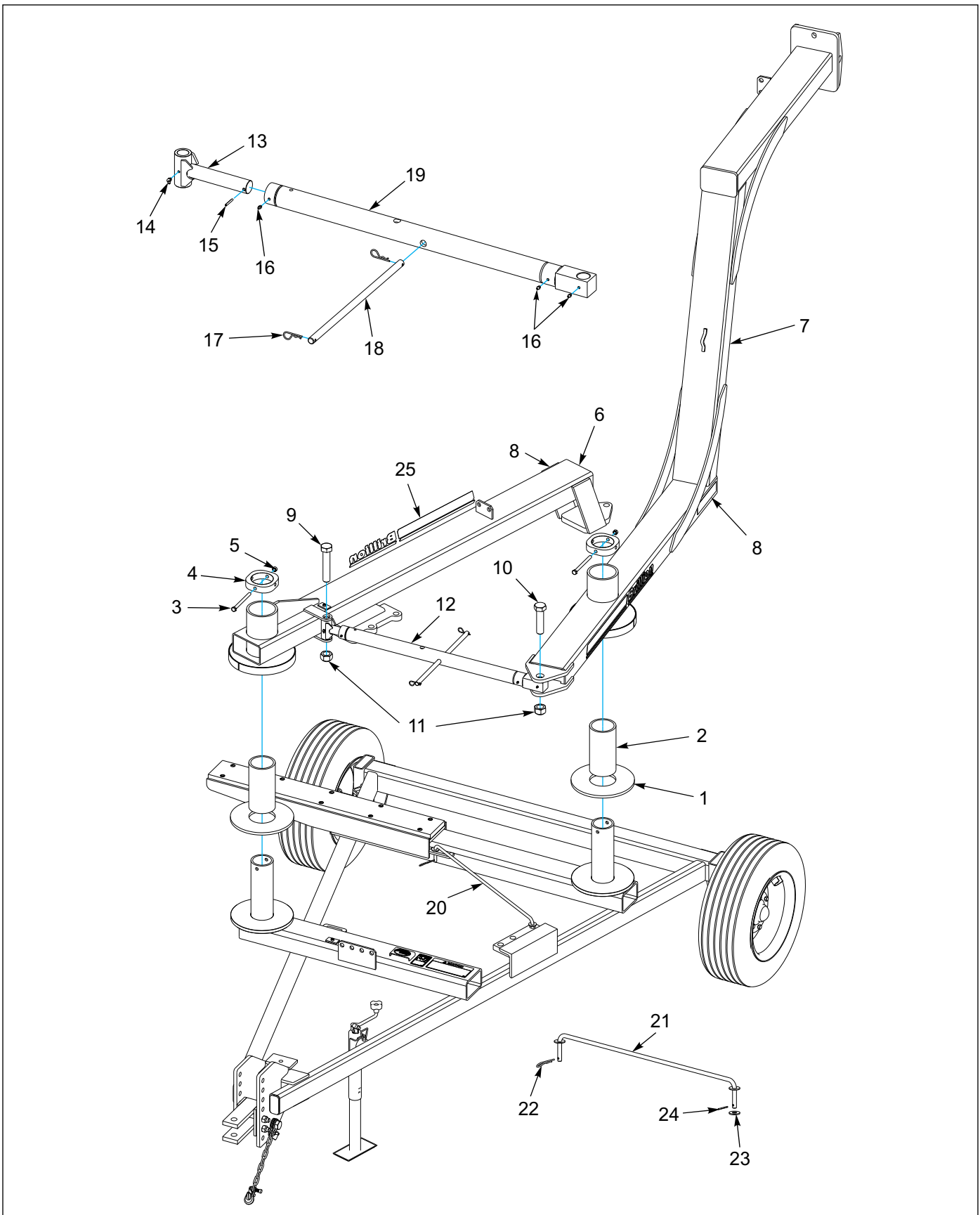


Figure 1-3: Pivoting Hitches

Pivoting Hitches

ITEM	PART NUMBER	DESCRIPTION	QTY.
1	9K983	WEAR DISK	2
2	1P930	BUSHING 4.75OD X 4.062ID X 9.25	2
3	1-654-010055-17	SCREW, HEX CAP, 1/2-13UNC X 6, GR5	2
4	9K981	KEEPER PLATE	2
5	1-512-010005-09	NUT, HEX, SLFLKG, 1/2-13, GRB	2
6	1P879	SHORT HITCH	1
7	1P880	LONG HITCH - FRONT	1
8	528934	REFLECTOR - YELLOW	2
9	1P989	HHCS 1 1/4-7NC X 6 1/2	1
10	1P990	HHCS 1 1/4-7NC X 5	1
11	101385	NUT, HEX SLFLKG, 1-1/4-7, GRB	2
12	1P884	TURNBUCKLE, DOUBLE HITCH (INCLUDES ITEMS 13-19)	1
13	1P889	ROD END, R. H.	1
14	5210	ZERK FITTING 1/4-28 X 45 SAE	1
15	1-647-010004177	ROLL PIN	1
16	1-298-010001-1	ZERK FITTING 1/4 SAE	3
17	6J448	HAIRPIN COTTER 1/8	2
18	2K912	HANDLE	1
19	1P888	BRACE BODY	1
20	2P080	TRANSPORT LOCK ASM (INCLUDES ITEMS 21-24)	1
21	2P079	TRANSPORT LOCK	1
22	4C856	HAIR PIN COTTER	1
23	1-861-010032-15	WASHER, FLAT 1/2 W, ZP/CD	1
24	2C298	COTTER PIN	1
25	4K037	DECAL - BRILLION (2 3/4 X 32)	2

ILLUSTRATED PARTS LIST

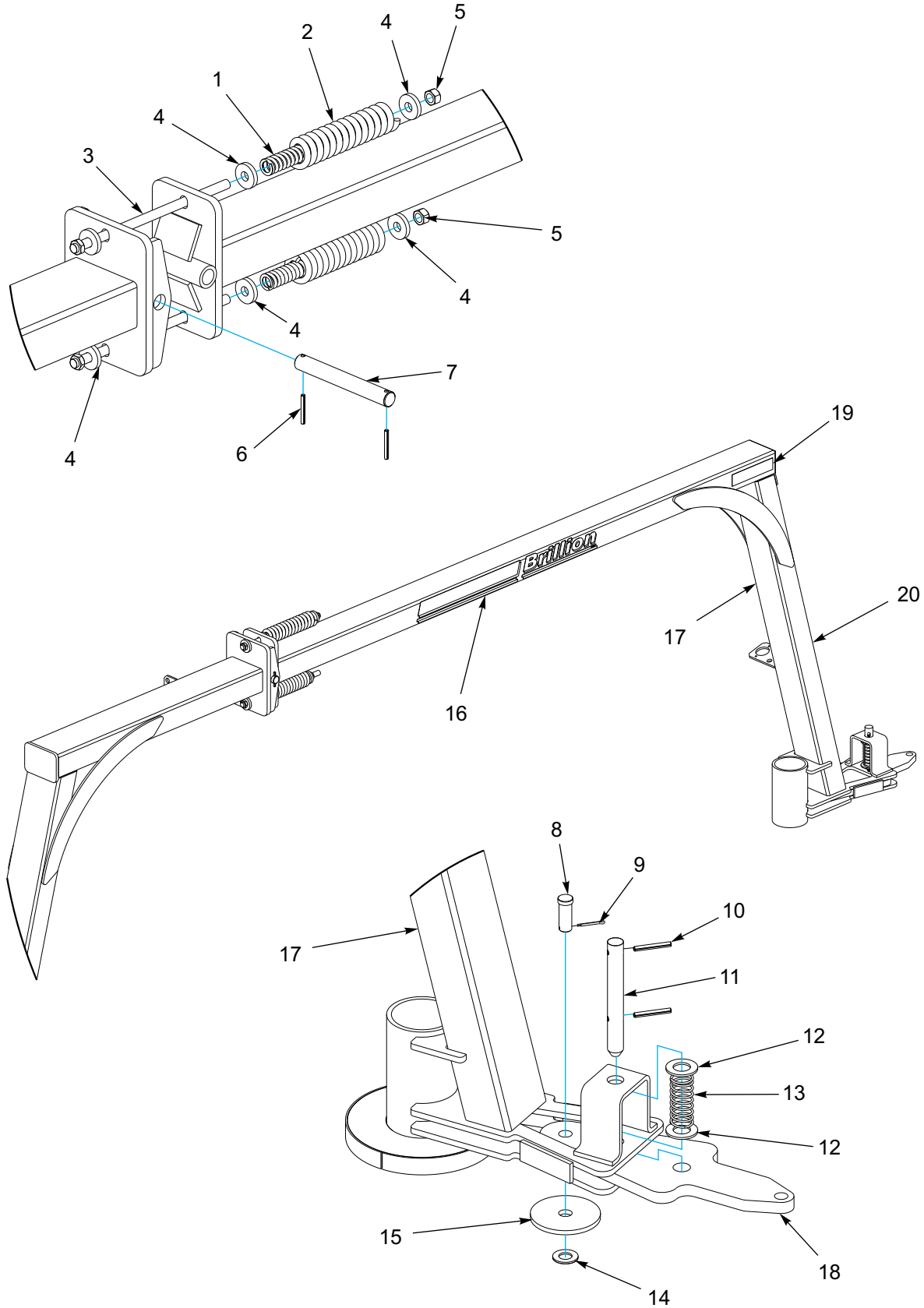


Figure 1-4: Rear to Front Hitch

Rear to Front Hitch

ITEM	PART NUMBER	DESCRIPTION	QTY.
1	6D362	INNER SPRING	2
2	4K076	OUTER SPRING	2
3	1P882	SPRING BOLT	2
4	6K158	WASHER - 3/8" THICK	6
5	1-512-010005-15	NUT, HEX, SLFLKG GRB 3/4-10	2
6	9J206	5/16 X 2-1/2 ROLL PIN	2
7	3J497	PIN	1
8	8D099	CLEVIS PIN	1
9	1-557-010362-51	PIN, COTTER 3/16 X 1-1/2	1
10	1-647-010004259	SPRING PIN, SLOTTED 3/8 X 3	2
11	4K563	PIN (10 1/2" LONG)	1
12	116100	WASHER, 1-1/4 NAR FL ZP/CD	2
13	4K564	COMPRESSION SPRING	1
14	1-861-010032-24	WASHER FL 1IN NARROW, ZP	1
15	1P934	WASHER (1 1/16 DIA. HOLE)	1
16	4K039	BRILLION (3 1/2 X 40)	2
17	1P881	LONG HITCH - REAR (INCLUDES ITEM 19)	1
18	1P933	HITCH PLATE	1
19	528934	REFLECTOR - YELLOW	2
20	1P994	LONG HITCH ASSEMBLY (INCLUDES ITEMS 8-15, 17, AND 18)	1

ILLUSTRATED PARTS LIST

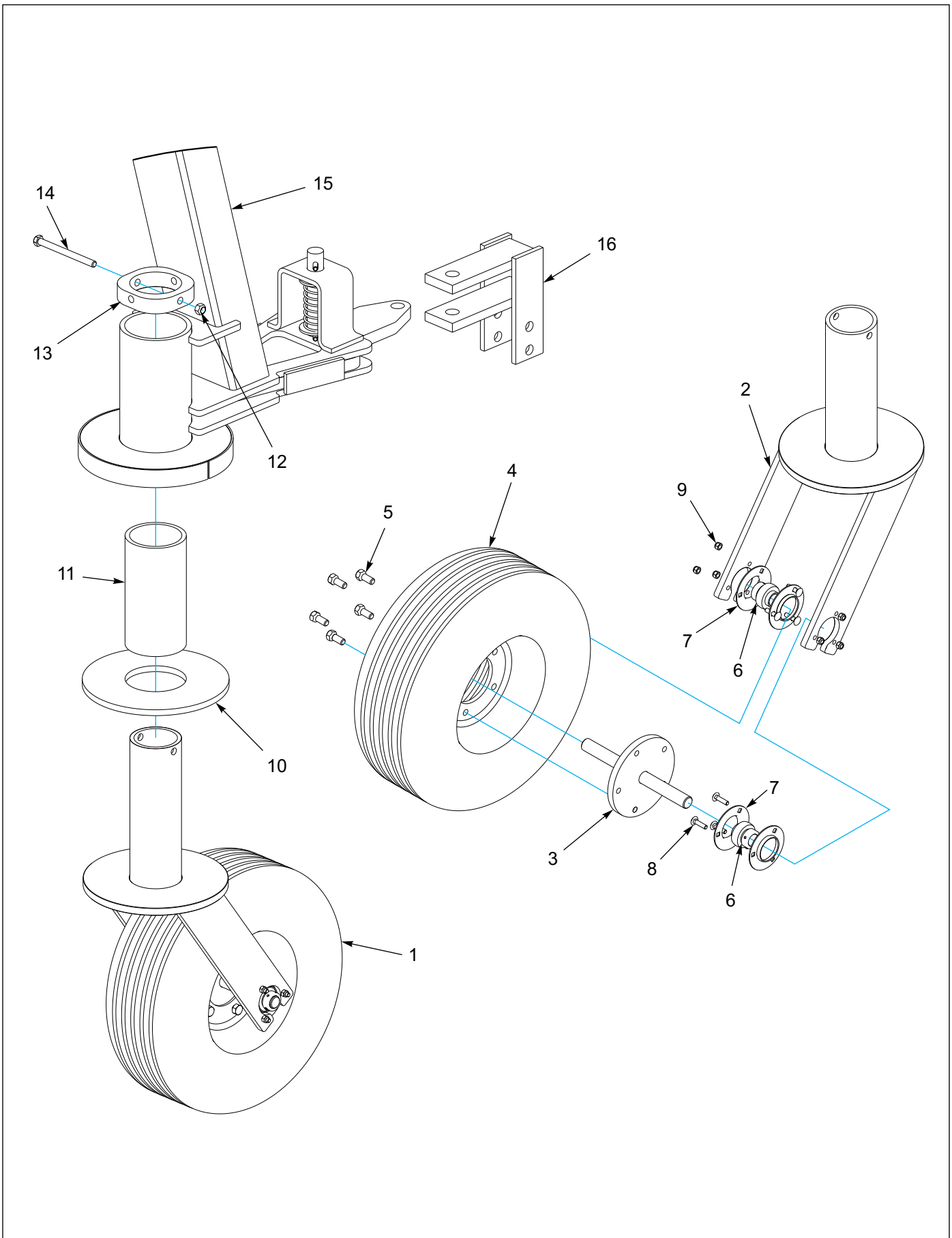


Figure 1-5: Caster Wheel

Caster Wheel

ITEM	PART NUMBER	DESCRIPTION	QTY.
1	1P883	CASTER WHEEL (INCLUDES ITEMS 2-9)	1
2	1P886	CASTER WHEEL FORK	1
3	1P887	WHEEL SPINDLE	1
4	2K277	WHEEL & TIRE	1
5	5C100	WHEEL BOLT 1/2-20 X 1 GR5, ZP	5
6	5J337	BEARING & COLLAR	2
7	9C601	FLANGETTE	4
8	1P991	CARRIAGE BOLT	6
9	104032	NUT, HX SLF-LKG W/MYL 5/16-18	6
10	9K983	WEAR DISK	1
11	1P930	BUSHING 4.75OD X 4.062ID X 9.25	1
12	1-512-010005-09	NUT, HEX SLFLKG, 1/2-13 GRB	1
13	9K981	KEEPER PLATE	1
14	1-654-010055-17	SCREW, HEX CAP, 1/2-13UNC X 6, GR5	1
15	1P881	LONG HITCH - REAR	1
16	1P885	HITCH	1

ILLUSTRATED PARTS LIST

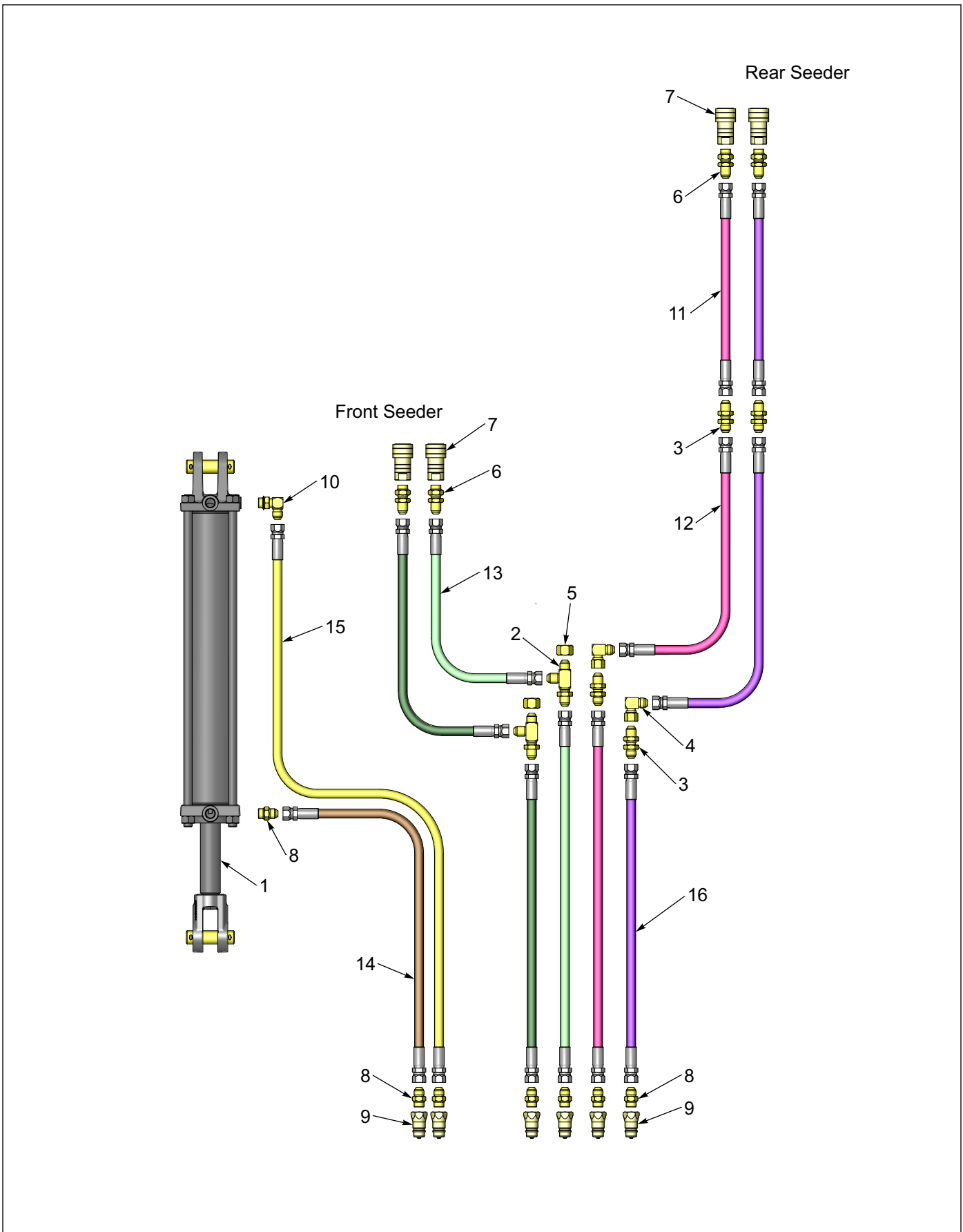


Figure 1-6: Hydraulic Schematic

Hydraulic Schematic

ITEM	PART NUMBER	DESCRIPTION	QTY.
1	6K843	HYD CYLINDER - 3-1/2 X 16 (SEE PAGE 1-18)	1
2	1P292	TEE, 08MJ X 08MJ X 08MJ RUN	2
3	1P936	ADAPTER, 08MJ X 08MJ (BULKHEAD)	4
4	4K608	90 DEGREE ADAPTOR (08MJ X 08FJS)	2
5	4K606	CAP	2
6	1P782	BULKHEAD, 08MJ X 08MOR	4
7	5K499	HYDRAULIC COUPLING	4
8	4K602	STRAIGHT ADAPTER	7
9	4K912	MALE TRACTOR TIP	6
10	4K603	90 DEGREE ADAPTOR (08MJ X 08MOR)	1
11	8K629	HYDRAULIC HOSE ASM-3/8 X 160	2
12	4K612	HYDRAULIC HOSE - 184"	2
13	8K786	HYD HOSE ASM 3/8 X 82-1/2	2
14	8K832	HYDRAULIC HOSE ASM 3/8 X 129	1
15	1P942	HYD HOSE ASM, 3/8 X 148	1
16	4K888	HYDRAULIC HOSE - 3/8 X 105"	4

ILLUSTRATED PARTS LIST

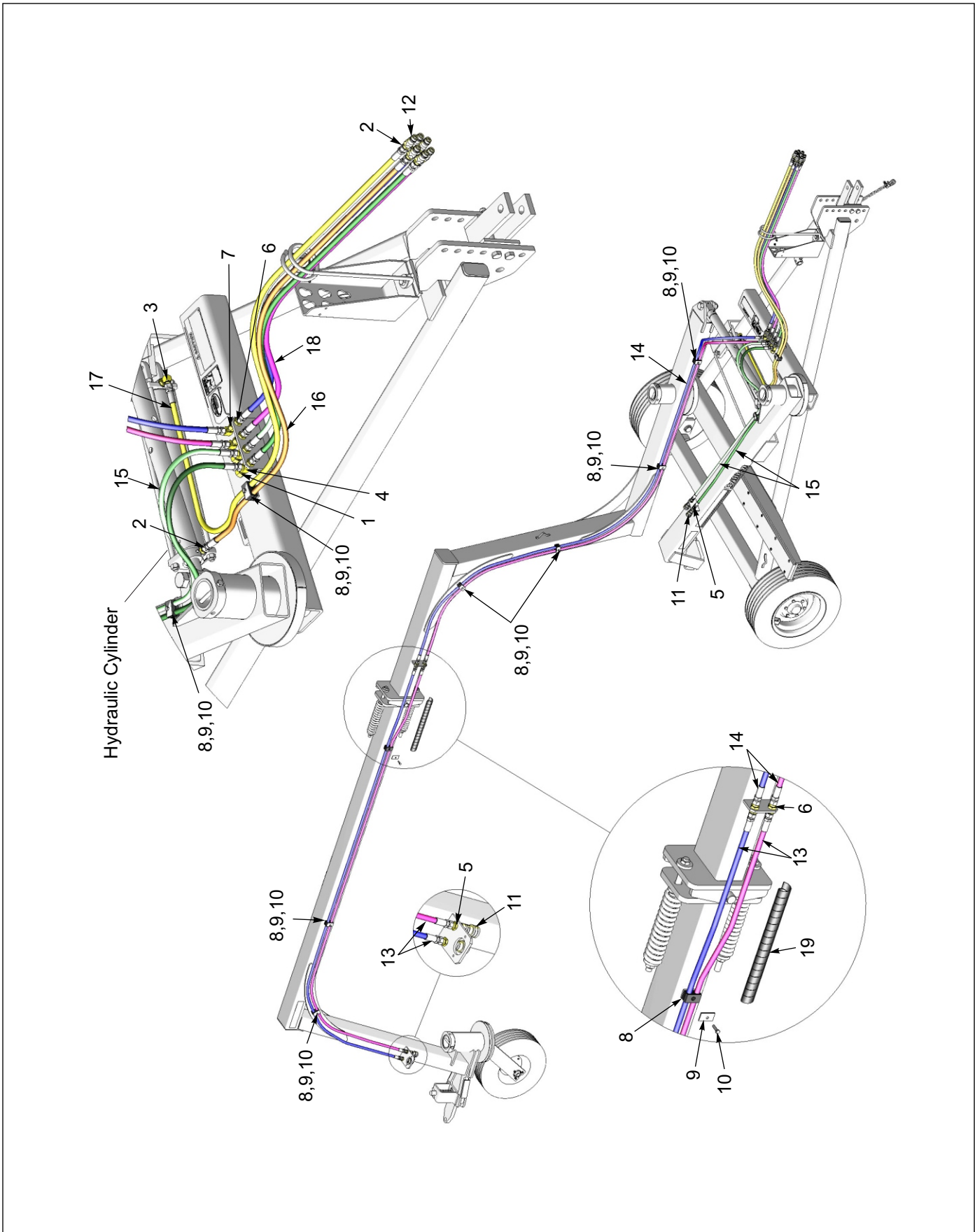


Figure 1-7: Hydraulic Layout

Hydraulic Layout

ITEM	PART NUMBER	DESCRIPTION	QTY.
1	4K606	CAP	2
2	4K602	STRAIGHT ADAPTOR	7
3	4K603	90 DEGREE ADAPTOR (08MJ X 08MOR)	1
4	1P292	TEE, 08MJ X 08MJ X 08MJ RUN	2
5	1P782	BULKHEAD, 08MJ X 08MOR	4
6	1P936	ADAPTER, 08MJ X 08MJ (BULKHEAD)	4
7	4K608	90 DEGREE ADAPTER (08MJ X 08FJS)	2
8	1P937	TWIN CLAMP PAIR, .67" DIA	9
9	1P938	TWIN TOP PLATE	9
10	7D077	CAPSCREW (5/16-18 X 1 1/4 GR5, ZP)	9
11	5K499	HYDRALIC COUPLING	4
12	4K912	MALE TRACTOR TIP	6
13	8K629	HYD HOSE ASM, 3/8 X 160	2
14	4K612	HYDRAULIC HOSE - 184"	2
15	8K786	HYD HOSE ASM 3/8 X 82-1/2	2
16	8K832	HYDRAULIC HOSE ASM 3/8 X 129	1
17	1P942	HYD HOSE ASM, 3/8 X 148	1
18	4K888	HYDRAULIC HOSE - 3/8 X 105"	4
19	1P995	HOSE WRAP, 26"	1

ILLUSTRATED PARTS LIST

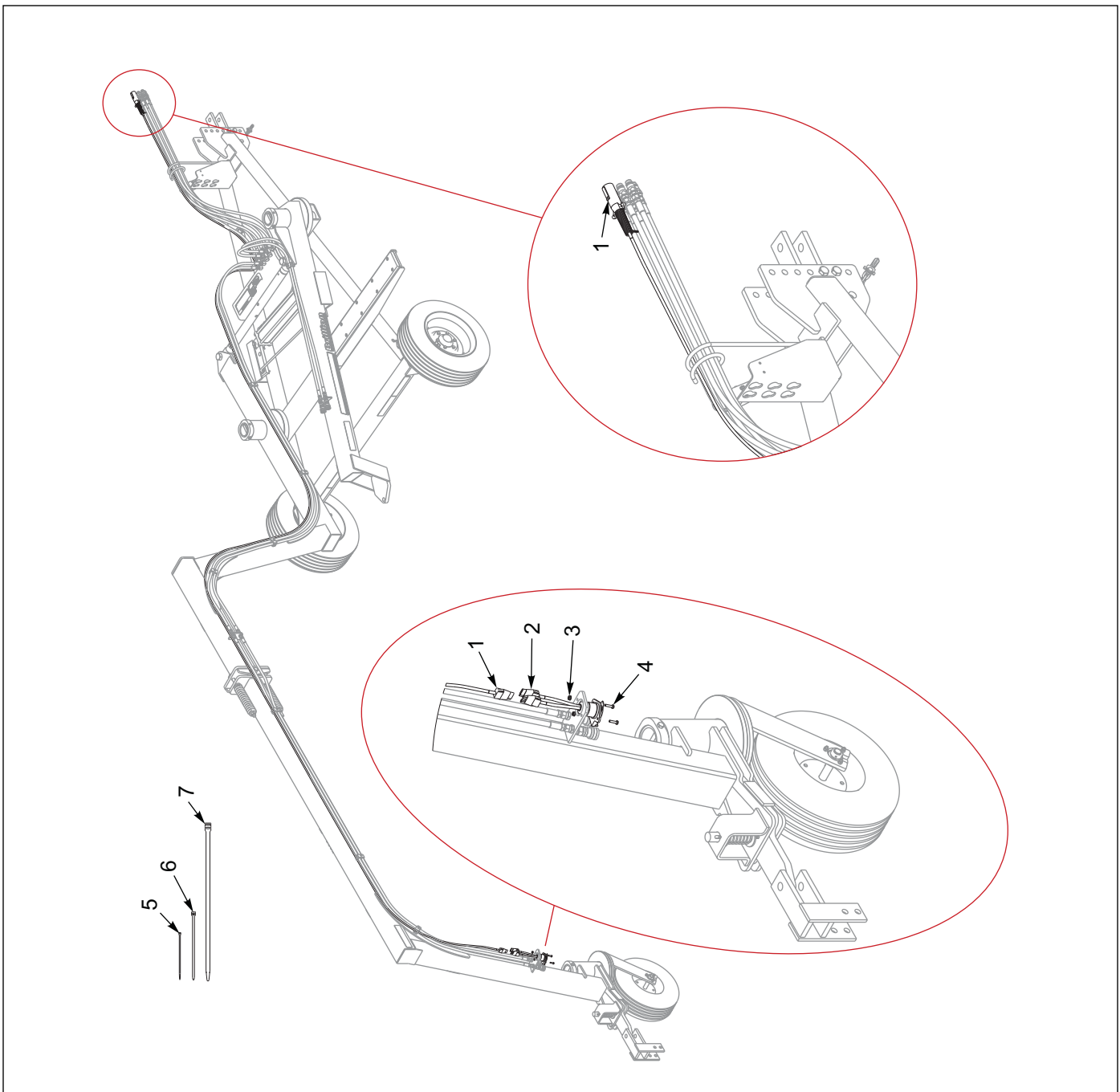


Figure 1-8: AG Harness

AG Harness

ITEM	PART NUMBER	DESCRIPTION	QTY.
1	175152	HARNESS 7 PIN/4 PIN WP (AFTER 08/01/2023)	1
1	8K662	AG HARNESS ASM - 37'-6" (BEFORE 08/01/2023)	1
2	143871	HARNESS, TANDEM ADAPTER (AFTER 08/01/2023)	2
2	4K826	TANDEM HAUL ADAPTER (002500) (BEFORE 08/01/2023)	1
3	108417	NUT SPIRAL 1/4-20HX FG	2
4	1-654-010047-06	SCREW, HX CP 1/4-20UNC X 1 GR5	2
5	5K288	CABLE TIE (5")	12
6	9D674	HOSE TIE (8")	6
7	9D851	CABLE TIE - 20"	4

ILLUSTRATED PARTS LIST

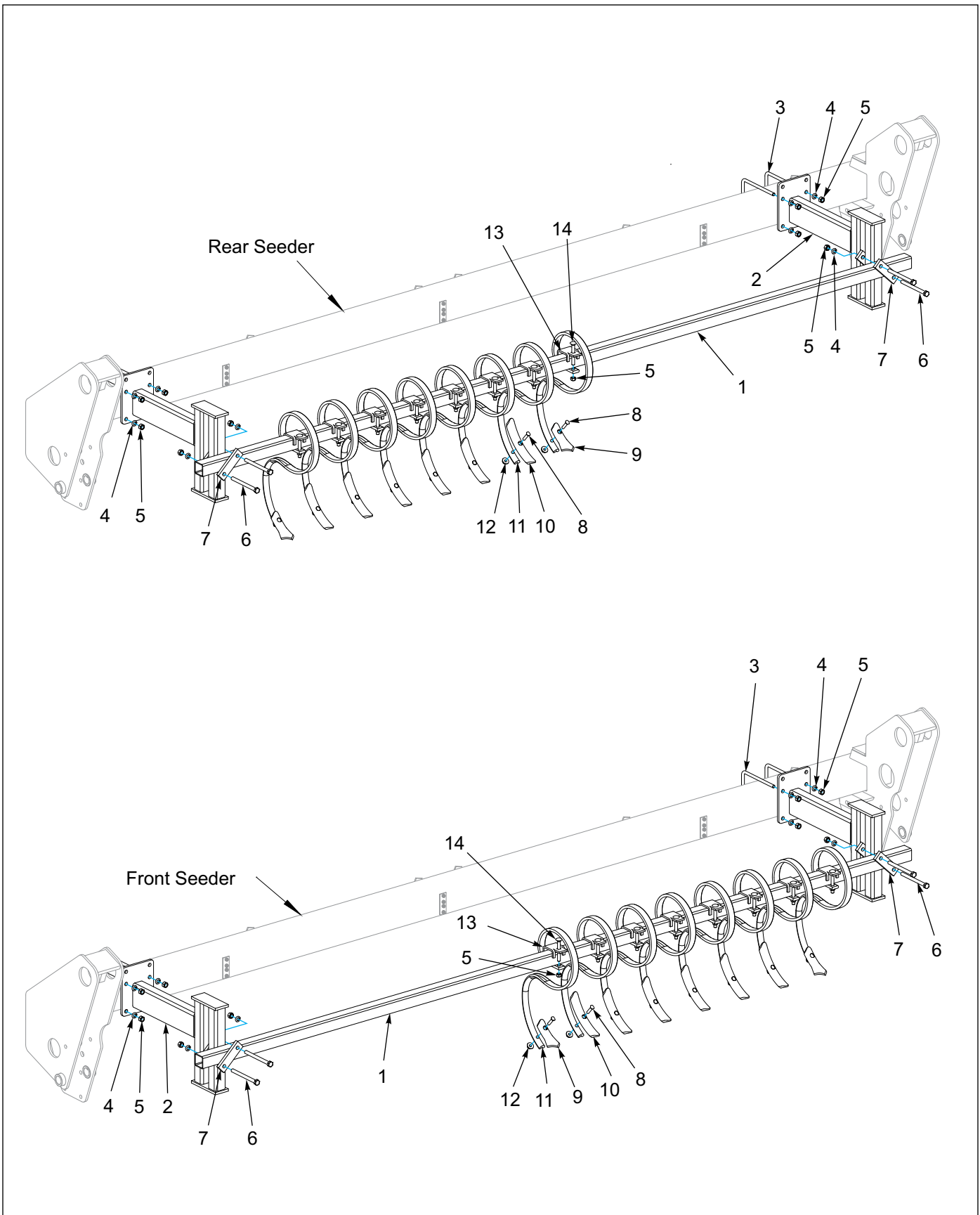


Figure 1-9: Track Remover Kit - Optional

Track Remover Kit - Optional

ITEM	PART NUMBER	DESCRIPTION	QTY.
	185305	TRACK REMOVER KIT, BDH512	
1	9J962	TUBE (12' MODEL) (8' AND 10' MODELS CUT TO LENGTH)	2
2	9J474	BRACKET	4
3	3J561	U-BOLT, 1/2-13 X 7-1/2 X 4-1/2	8
4	1-861-010034-13	WASHER, LKG HLCL SPR, 1/2	24
5	1-512-010007-09	NUT, HEX 1/2-13 ZP	24
6	1-654-010055-17	SCREW, HEX CAP, 1/2-13UNC X 6, GR5	8
7	5J358	STRAP	8
8	7D728	CULTIVATOR BOLT	16
9	7D014	DUCKFOOT POINT	4
10	2J155	HEAVY DUTY REVERSIBLE POINT	12
11	1J887	S-TINE, 10mm X 32mm	16
12	5J616	FLANGE LOCK NUT 3/8-16	16
13	1J834	CLAMP	16
14	2J241	SCREW, 7/16-14NC X 3-1/2 RDHD SQNK	16

ILLUSTRATED PARTS LIST

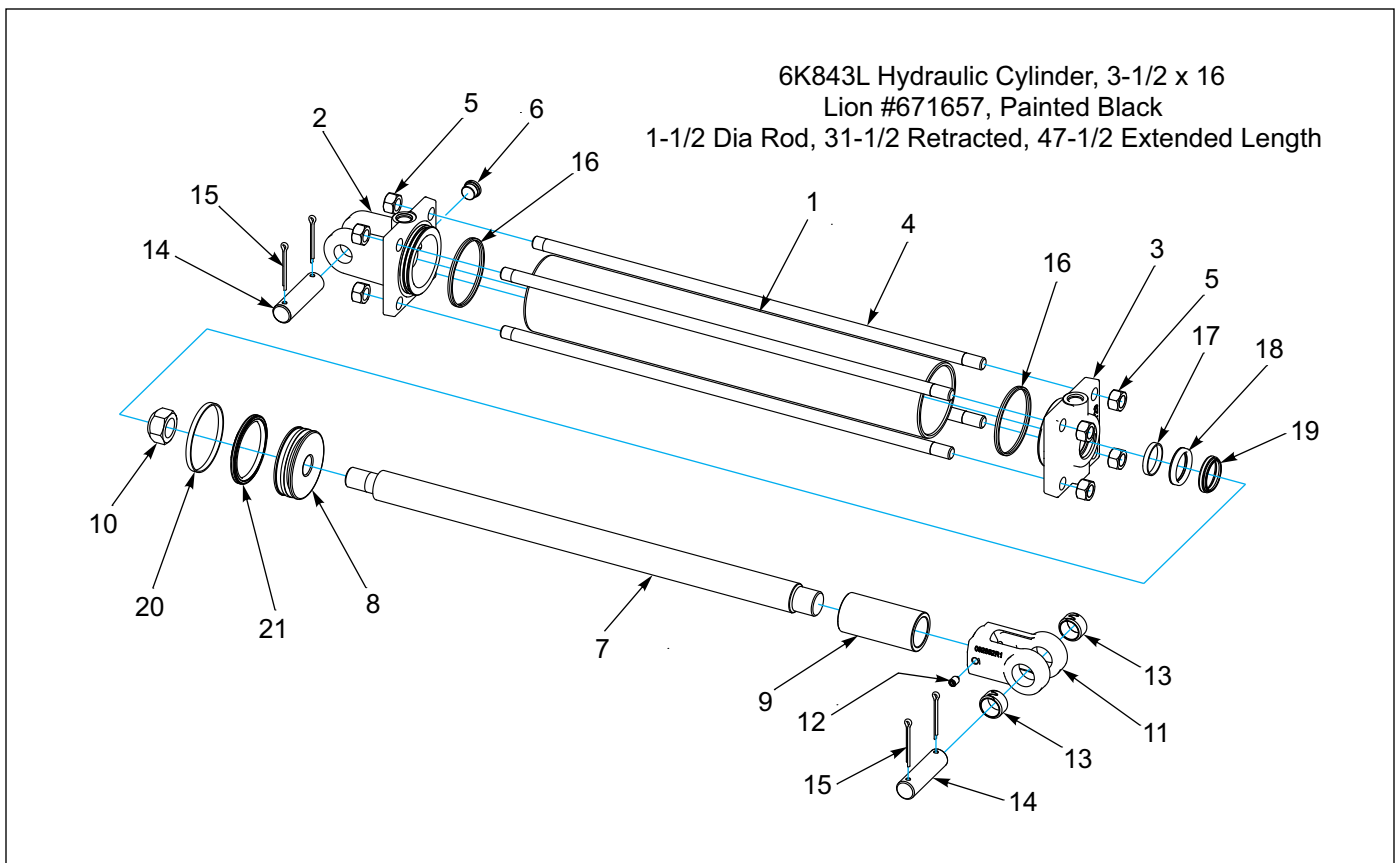


Figure 1-10: Hydraulic Cylinder Assembly - 3 1/2 X 16

Hydraulic Cylinder, 3-1/2 x 16

ITEM	PART NUMBER	DESCRIPTION	QTY
	6K843	HYD CYLINDER - 3 1/2 X 16	
1	-----	TUBE	1
2	-----	CLEVIS CAP	1
3	-----	ROD CAP	1
4	-----	TIE ROD	4
5	-----	NUT, HEX 5/8-18, ZP	8
6	-----	PLUG, SOCKET HEAD 3/4-16	1
7	-----	ROD	1
8	-----	PISTON	1
9	-----	STOP TUBE	1
10	-----	NUT, LOCK 1-14, GRB, ZP	1
11	2P111	ROD CLEVIS (INCLUDES ITEMS 12 AND 13)	1
12	1P443	SET SCREW, 3/8-16 X 1/2 NYLON TIP	1
13	3P079	SPRING BUSHING, 1.0 X 1.25 X 0.75	2
14	5J650	PIN, 1.0 X 3.625 H2	2
15	110-4224	PIN, COTTER 3/16 X 2IN LG	4
16	-----	SEAL, BU#236 19PI-236	2
17	-----	O-RING, 236 (3.25 X 3.5) D90	2
18	-----	SEAL, HALLITE 605 ROD 1-1/2D	1
19	-----	SEAL, NOK-AR2263-EO 1-1/2"BO	1
20	-----	O-RING, 151 (3.0 X 3.188) DURO90	1
21	-----	SEAL, PTFE PISTON RING 3-1/2D	1
22	-----	WEAR RING, 3.50-3.25-.25-GFN	1
23	1P744	LION CYLINDER SEAL KIT(3.5") (INCLUDES ITEMS 16-22)	1

Numerical Index

Numerics

100855	1-3	1C788	1-3
101385	1-5	1J834	1-17
104032	1-9	1J887	1-17
108417	1-3, 1-14	1P292	1-11, 1-13
110-4224	1-18	1P443	1-18
116100	1-7	1P744	1-18
1-298-010001-1	1-3, 1-5	1P782	1-11, 1-13
141433	1-3	1P878	1-3
1-512-010005-05	1-3	1P879	1-5
1-512-010005-09	1-5, 1-9	1P880	1-5
1-512-010005-13	1-3	1P881	1-7, 1-9
1-512-010005-15	1-3, 1-7	1P882	1-7
1-512-010005-19	1-3	1P883	1-9
1-512-010007-09	1-17	1P884	1-5
1-557-010362-51	1-7	1P885	1-9
1-647-010004177	1-5	1P886	1-9
1-647-010004259	1-7	1P887	1-9
1-654-010047-04	1-3	1P888	1-5
1-654-010047-06	1-14	1P889	1-5
1-654-010051-13	1-3	1P930	1-5, 1-9
1-654-010055-17	1-5, 1-9, 1-17	1P933	1-7
1-654-010059-06	1-3	1P934	1-7
1-654-010065-08	1-3	1P936	1-11, 1-13
185305	1-17	1P937	1-13
1-861-010032-15	1-5	1P938	1-13
1-861-010032-19	1-3	1P942	1-11, 1-13
1-861-010032-24	1-3, 1-7	1P989	1-5
1-861-010034-13	1-17	1P990	1-5
		1P991	1-9

NUMERICAL INDEX

1P994	1-7	5C913	1-3
1P995	1-13	5C914	1-3
2C298	1-5	5J337	1-9
2J155	1-17	5J358	1-17
2J241	1-17	5J616	1-17
2K277	1-9	5J650	1-18
2K912	1-5	5K288	1-14
2P079	1-5	5K499	1-11, 1-13
2P080	1-5	6D284	1-3
2P111	1-18	6D312	1-3
2P447	1-3	6D333	1-3
2P449	1-3	6D336	1-3
3J497	1-7	6D337	1-3
3J561	1-17	6D338	1-3
3J880	1-3	6D362	1-7
3K706	1-3	6J448	1-5
3P079	1-18	6J765	1-3
4C856	1-5	6J766	1-3
4K037	1-5, 1-7	6K158	1-7
4K076	1-7	6K843	1-11, 1-18
4K563	1-7	7D014	1-17
4K564	1-7	7D077	1-13
4K602	1-11, 1-13	7D728	1-17
4K603	1-11, 1-13	7K802	1-3
4K606	1-11, 1-13	7K804	1-3
4K608	1-11, 1-13	8D099	1-7
4K612	1-11, 1-13	8J310	1-3
4K636	1-3	8J792	1-3
4K826	1-14	8K629	1-11, 1-13
4K888	1-11, 1-13	8K662	1-14
4K912	1-11, 1-13	8K664	1-3
5210	1-5	8K786	1-11, 1-13
528933	1-3	8K832	1-11, 1-13
528934	1-5, 1-7	8K885	1-3
528938	1-3	9C601	1-9
5C100	1-3, 1-9	9D674	1-14
5C479	1-3	9D851	1-14
5C480	1-3	9D923	1-3

9J206 **1-7**
9J474 **1-17**
9J962 **1-17**
9K981 **1-5, 1-9**
9K983 **1-5, 1-9**

Chapter 3

Glossary

For clarity this glossary of industry standard abbreviations and their definitions are provided.

A

ASSY Assembly
ASM Assembly
AR As Required

B

BATT Battery
BHSC Button Head Socket Cap
BLK Black
BRG Bearing

C

CB Carriage Bolt
CONN Connector
CRG Carriage
CTSK Countersunk
CTWT Counterweight
CVR Cover
CYD Cylinder

D

DBL Double
DIA Diameter

E

ENCLSD Enclosed

F

FHCS Flanged Head Cap Screw
FHHCS Flanged Hex Head Cap Screw
FL OR FLG Flange
FLT Flat
FPS Food Plot Seeder

G

GA Gauge
GR Grade

H

HHCS Hex Head Cap Screw
HCS High Carbon Steel
HD Head
HLCL Helical
HCSKT Hex Socket
HYD Hydraulic

I

ID Inside Diameter

L

LH Lefthand
LKG OR LOCK Locking
LWR Lower

M

MANF Manifold
MNT Mount

GLOSSARY

N

NPT National Pipe Thread
NRW Narrow

O

OD Outside Diameter
OHG Overhead Guard
ORFS OR ORS O-Ring Seal
ORP OR ORB O-Ring Boss

R

RH Righthand
RND Round

S

SER Series
SHCS Socket Head Cap Screw
SHLD Shield
SKT Socket
SLFLKG Selflocking
SOC Socket
SPDT Single Pole Double Throw
SPR Spring
SQ Square
SRTD Serrated
SSCR Setscrew
SST Stainless Steel
STD Standard

U

UPR Upper

W

WHL Wheel
WLD OR WLDMT Weldment

Z

ZP Zinc Plated

Document Control Revision Log:

Date	Revision	Improvement(s) Description and Comments
04/2012	F-646-R1	Initial Release
08/2023	F-646-2308	Update AG Harness



Intertek

Equipment from Landoll Company, LLC is built to exacting standards ensured by ISO 9001 registration at all Landoll manufacturing facilities.

Double Seeder Hitch BDH512 Parts Manual

Re-Order Part Number F-646

LANDOLL COMPANY, LLC

1900 North Street

Marysville, Kansas 66508

(785) 562-5381

800-428-5655 ~ WWW.LANDOLL.COM



Copyright 2020. Landoll Company, LLC

"All rights reserved, including the right to reproduce this material or portions thereof in any form."

