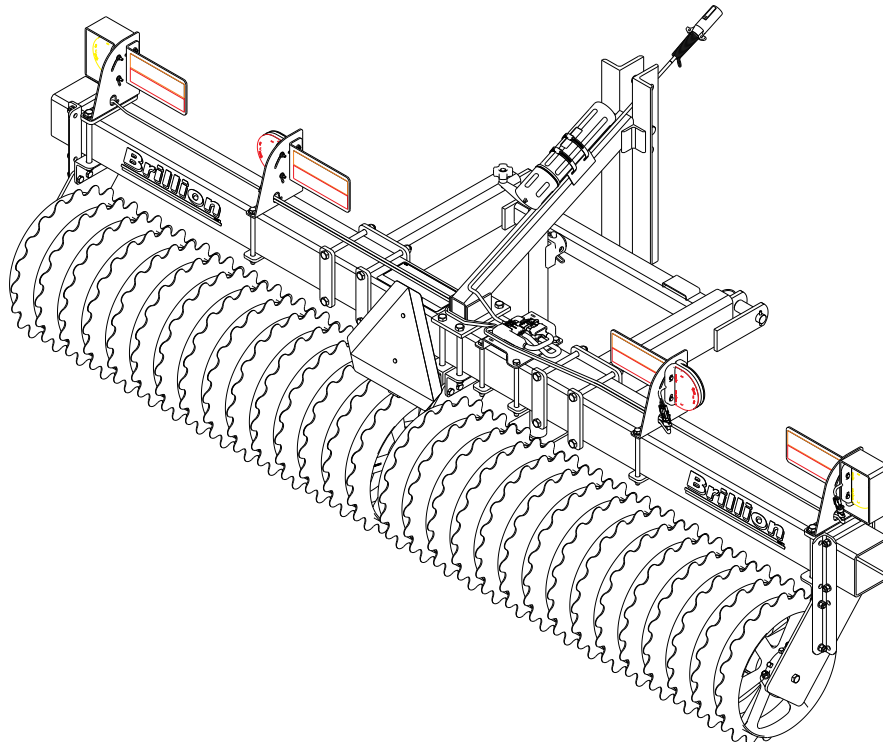




Pick-up Pulverizer
Operator's and Parts Manual
PPD Series 10' through 20'
PPO Series 10' through 20'



LANDOLL COMPANY, LLC

1900 North Street

Marysville, Kansas 66508

(785) 562-5381

800-428-5655 ~ WWW.LANDOLL.COM

PICK-UP PULVERIZERS

CONTENTS

Introduction	3
Location Reference	3
Parts Ordering	3
Safety Suggestions	4
Safety Signs	4
Safety Sign Location	5
Operating Instructions	6
Warning Light Assembly	7
Tire Track Remover Assembly	8
PPD Model Pulverizers - Machine Specifications	9
Optional Equipment	9
Repair Parts	10
Frame & Roller Assembly - 10' through 16' Machines	10
Frame & Roller Assembly - 18' through 20' Machines	12
Three Point Hitch	14
Scrapers	16
Light Kit	18
Tire Track Remover	19
PPO Model Pulverizers	23
Index	28

INTRODUCTION

Your Landoll/Brillion Pulverizer is built with the best materials and workmanship available. It has been designed to give years of trouble-free operation. Proper care and operation will insure that you receive the service and long life built into this machine.

Study this manual carefully before attempting to operate the machine. If items in the manual are not understood, contact your local Brillion dealer.



**SAFETY ALERT
SYMBOL**

This **safety alert symbol** is used to call your attention to **instructions concerning your personal safety**. It is found on your machine and in this manual. It is important to pay attention the the precautions indicated and to **be alert to the possibility of personal injury or death**.

Federal law requires you to explain the safety and operating instructions furnished with this machine to all employees before they are allowed to operate the machine. These instructions must be repeated to the employees at the beginning of each season. **Be sure to observe and follow these instructions for your own and your employee's safety.**

Location Reference

Right hand, left hand, and forward designations are determined by standing behind the machine and facing the direction it will travel during field operation.

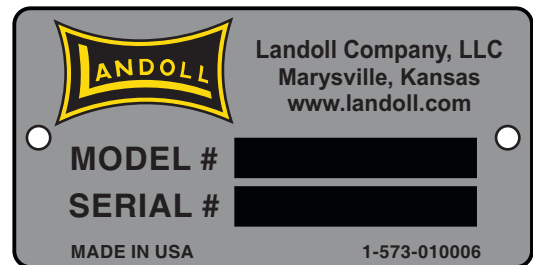
Parts Ordering

When ordering parts for this machine, include the complete model number and serial number. Refer to the nameplate located on the right side of the 3-point hitch. Please read and record this number upon taking delivery of this machine. See Figure 1.

Pulverizer Model No. _____

Serial Number _____

Date Purchased _____



Be sure to read the Warranty Form which is provided. Return the proper portion of the Warranty Form for recording at the factory.



SAFETY SUGGESTIONS

Investigation has shown that nearly one-third of all farm accidents are caused by careless use of machinery. You can do your part in improving safety by observing the following suggestions. Insist that all people working with you or for you abide by them.

1. Do not stand between tractor and implement when attaching or detaching implement, unless neither are moving.
2. Do not allow anyone to ride on tractor or machine.
3. Lower machine to ground when not in use.
4. Use support stand so that machine will not roll when unhitched from tractor.
5. Do not transport at speeds over 20 MPH.
6. When transporting machine, avoid sudden stops or sharp turns because the weight of the machine may cause the operator to lose control of the tractor.
7. When transporting the machine on a road or highway, use adequate warning symbols, reflectors, lights and slow moving vehicle signs as required.
8. Securely block machine when working on or under it to prevent injury in case of hydraulic failure or inadvertent lowering by another person.



SAFETY WARNING SIGNS

The “WARNING” signs illustrated on this page are placed on the machine to warn of hazards. “The warnings found on the sign are for your personal safety and those around you.” Their locations on the machine are shown on the following page. **OBSERVE THESE WARNINGS!**

Keep these signs clean so they can be observed readily. Wash with soap and water or cleaning solution as required.

Replace “WARNING” signs should they become damaged, painted over or if they are missing.

When replacing decals, clean the machine surface thoroughly using soap and water or cleaning solution to remove all dirt and grease.

Figure 2A



①



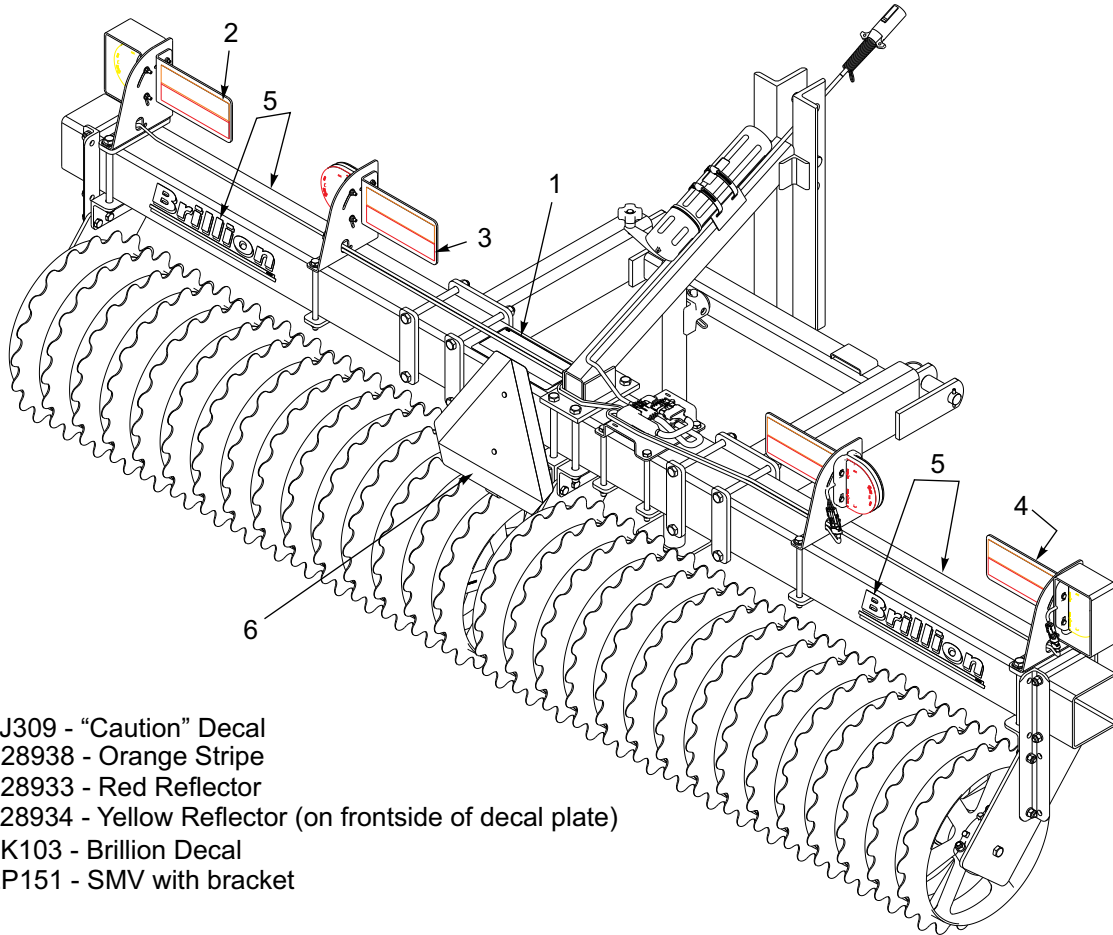
②



③

1. 8J309 - Decal, “Caution” list
2. 528934 - Decal, Reflective Amber
3. 528933 - Decal, Reflective Red

Decal Locations



1. 8J309 - "Caution" Decal
2. 528938 - Orange Stripe
3. 528933 - Red Reflector
4. 528934 - Yellow Reflector (on frontside of decal plate)
5. 4K103 - Brillion Decal
6. 2P151 - SMV with bracket

Figure 2B

OPERATION

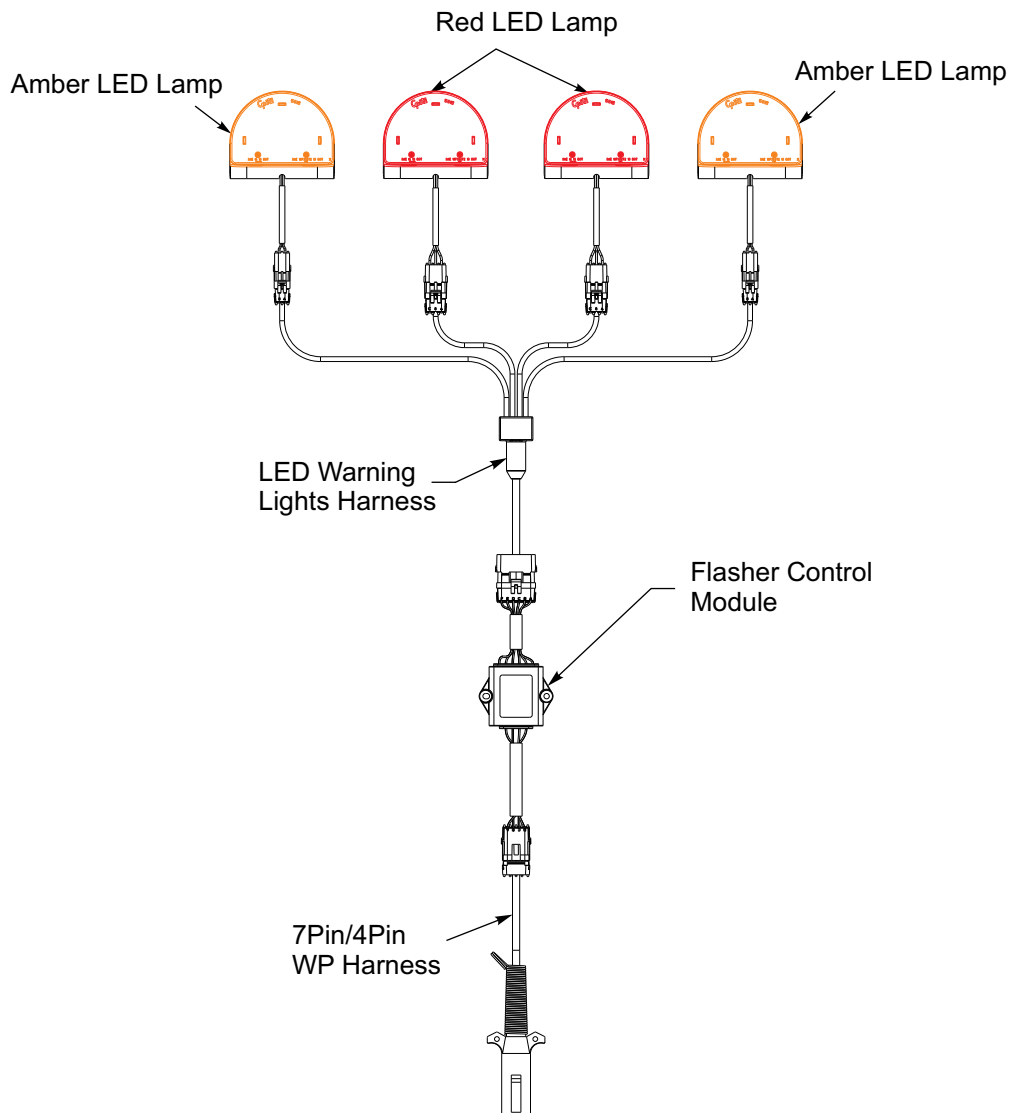


Securely block machine when working on or under it to prevent injury in case of hydraulic failure or inadvertent lowering by another person.

This pulverizer is designed to be mounted to tractors with a category II 3-point hitch. Clevis pins (with 1 1/8" dia.) are provided for attaching to the tractor's lower links. Fasten to upper tractor link securely with a 1" pin.

When operating, keep support stand locked up in raised position. To park the pulverizer, lower it to a level surface; then set and fix the support stand all the way down.

After the first 1 - 2 hours of use, check over all fasteners to insure that they remain tight. Periodic checks should be made thereafter.

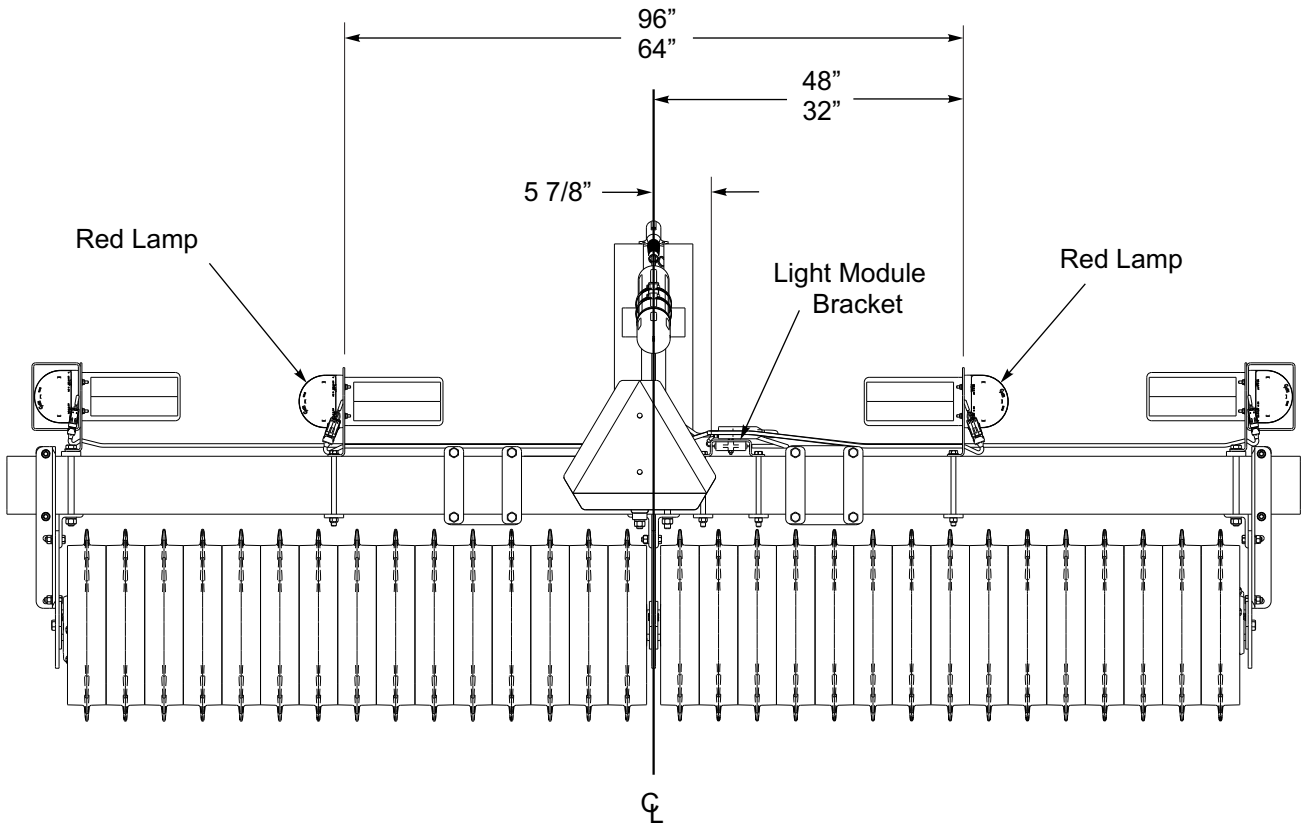


When plugging in the LED 7-pin connector:

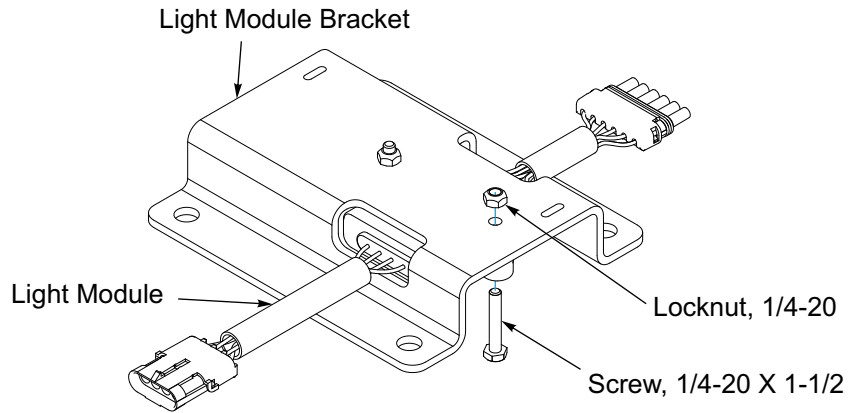
- 1) Make sure the tractor has a good clean receptacle, free of dirt and corrosion.
- 2) Make sure the 7-pin connector is inserted ALL the way in. With tighter fitting pins, operator may think the connector is all the way in, but really isn't.
- 3) Make sure the tractor receptacle cover latches over the keyway on the 7-pin connector to hold the connector in place.

If an operator plugs in the 7-pin connector, but the lights do not seem to work right, check the above items to make sure there is a good connection with the 7-pin connector.

LED Lamp Placement Dimensions



Light Module and Bracket

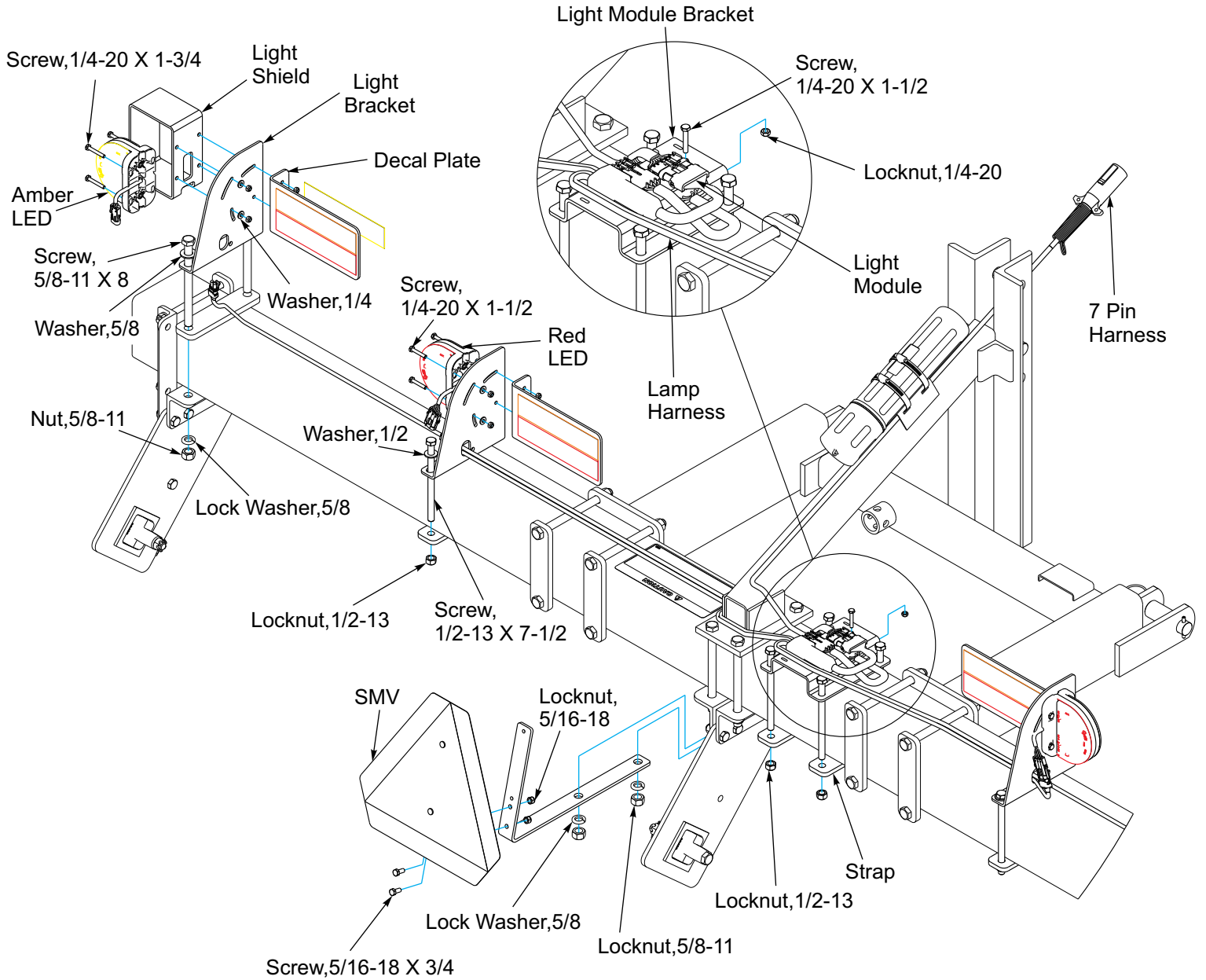


LED Lamp and Harness Installation

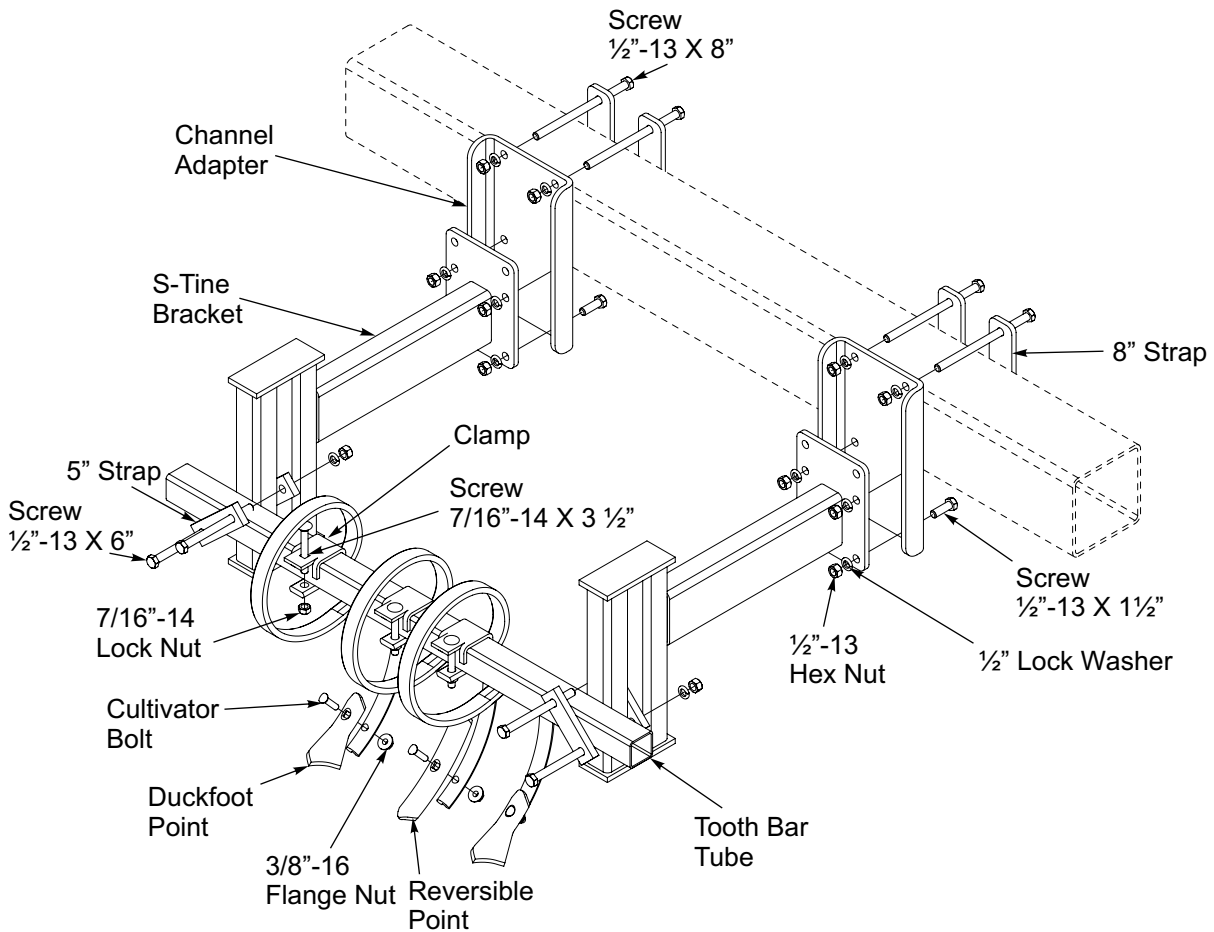
1. Install the inner Light Brackets on the frame tube, approximately 32" from the center of the frame. Place a Strap under the frame and secure Light Brackets with 1/2-13 X 7-1/2 Screws, Washers and Locknuts. See pages 7A and 7C.
2. Install the outer Light Brackets on the frame tube using existing Bearing Hanger Hardware.
3. Place the Amber LED's inside the Light Shields and attach to the outer Light Bracket using 1/4-20 X 1-3/4 Screws, then attach the Decal Plate to the opposite side of the Light Bracket and secure with Washers and Locknuts.
4. Attach the Red LED's to the inner Light Brackets using 1/4-20 X 1-1/2 Screws, then attach the Decal Plate to the opposite side of the Light Bracket and secure with Washers and Locknuts.
5. Install the Light Module under the Light Module Bracket using two 1/4-20 X 1-1/2 Screws and Locknuts. Then attach the Light Module Bracket to the frame approximately 5 7/8" right of the center of the frame using 1/2-13 X 7-1/2 Screws, Washers and Locknuts. See page 7A
6. Attach the 7 pin harness to the Light Module. Route the harness along the frame and to the front of the 3 point Hitch.
7. Layout the LED Lamp Harness. Note that the cords are marked "Left" and "Right". Attach the harness to the Light Module.
8. Route the left 2 plug cord along the top of the left side frame, going through both Light Brackets. Attach the cord into the Amber LED, repeat for the right side.
9. Route the left 3 plug cord along the top of the left side frame, through the Red LED Light Bracket. Attach the cord into the Red LED, repeat for the right side.
10. Secure both harnesses with tie straps, making sure to leave enough slack to allow the machine to raise and lower. Bundle and secure any excess cord with tie straps.
11. Raise and lower machine to check for proper clearance, adjust accordingly.

Important: All wires must be firmly attached to machine frame members, so they don't sag or become torn loose by field debris. Use the cable and hose ties provided.

LED Warning Light Installation



ASSEMBLY OF THE 5K977 TIRE TRACK REMOVER KIT



Centered behind each tractor tire, attach a set of Channel Adapters to the Pulverizer frame using the 8" Straps and 1/2" X 8" Bolts, Lock Washers, and Hex Nuts. Ensure that the Channel Adapter end with four holes is downward. Prior to inserting the bottom 8" Bolts line up the S-Tine bracket with the four lower holes on the Channel Adapter. Attach with 8" Bolts and Hex Nuts. The 1 1/2" Screws, Lock Washers and Nuts are inserted in the two bottom holes. Tighten all fasteners at this time.

Attach Tooth bar Tubes to the S-Tine Brackets using 5" Straps and 1/2" X 6" Bolts, Lock Washers, and Nuts. Tighten all fasteners at this time.

Locate and install S-Tines as needed to cover tractor tire tracks.

Attach the Duckfoot and Reversible Points to the S-Tines using the Cultivator Bolts and 3/8" Flange Nuts. The suggested pattern is to use the Reversible Point on center tine and Duckfoot Points on each side. If needed, additional tines may be purchased and installed.

Check for interference between tractor tires and S-Tines. If this occurs, the Tooth Bar Tubes can be mounted behind rearmost vertical member on the S-Tine brackets.

PPD PULVERIZERS

MACHINE SPECIFICATIONS

(Subject to Change without Notification)

Model Designation:

Basic model is denoted by “**PPD**” - **P**ickup **P**ulverizer with **D**uctile wheels.
 The number following indicates the rolling width.
 (example: PPD10 - 10’ Pickup Pulverizer with ductile wheels)

Basic Machine Specifications:

Model	Rolling Width	Transport Width	No. Wheels	20” Ductile Wheel Style	Axle Size	Approximate Weight (Lbs.)
PPD-10	10’	11’	30	8J001	4”	1568
PPD-12	12’	13’ 2”	36	8J001	4”	1792
PPD-14	14’	15’ 2”	42	8J001	4”	2016
PPD-16	16’	17’ 2”	48	8J001	4”	2386
PPD-18	18’	19’ 2”	54	9J808	4 1/2”	2769
PPD-20	20’	21’ 2”	60	9J808	4 1/2”	3026

Frame: 3/8” Wall Tubing

Hitch: Category II 3 Point

OPTIONAL EQUIPMENT

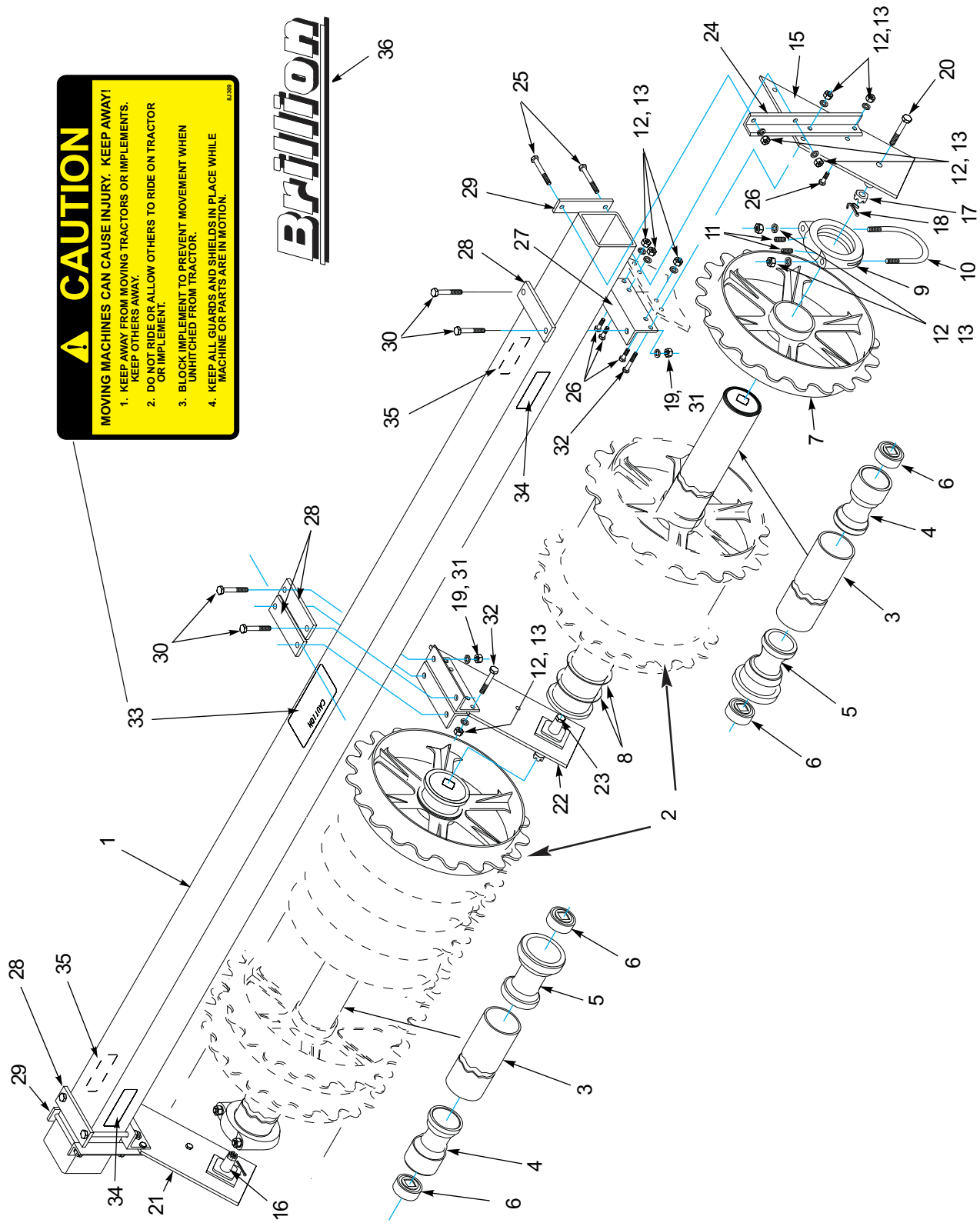
Scraper Kits:

5K753	for PPD-10	121#
5K754	for PPD-12	137#
5K755	for PPD-14	152#
5K756	for PPD-16	168#
5K757	for PPD-18	196#
5K758	for PPD-20	212#

5K977 Tire Track Remover Kit213#

CAUTION
 MOVING MACHINES CAN CAUSE INJURY. KEEP AWAY!
 1. KEEP AWAY FROM MOVING TRACTORS OR IMPLEMENTS.
 2. DO NOT RIDE OR ALLOW OTHERS TO RIDE ON TRACTOR OR IMPLEMENT.
 3. BLOCK IMPLEMENT TO PREVENT MOVEMENT WHEN UNHITCHED FROM TRACTOR.
 4. MACHINE OR PARTS ARE IN MOTION.

Brillion

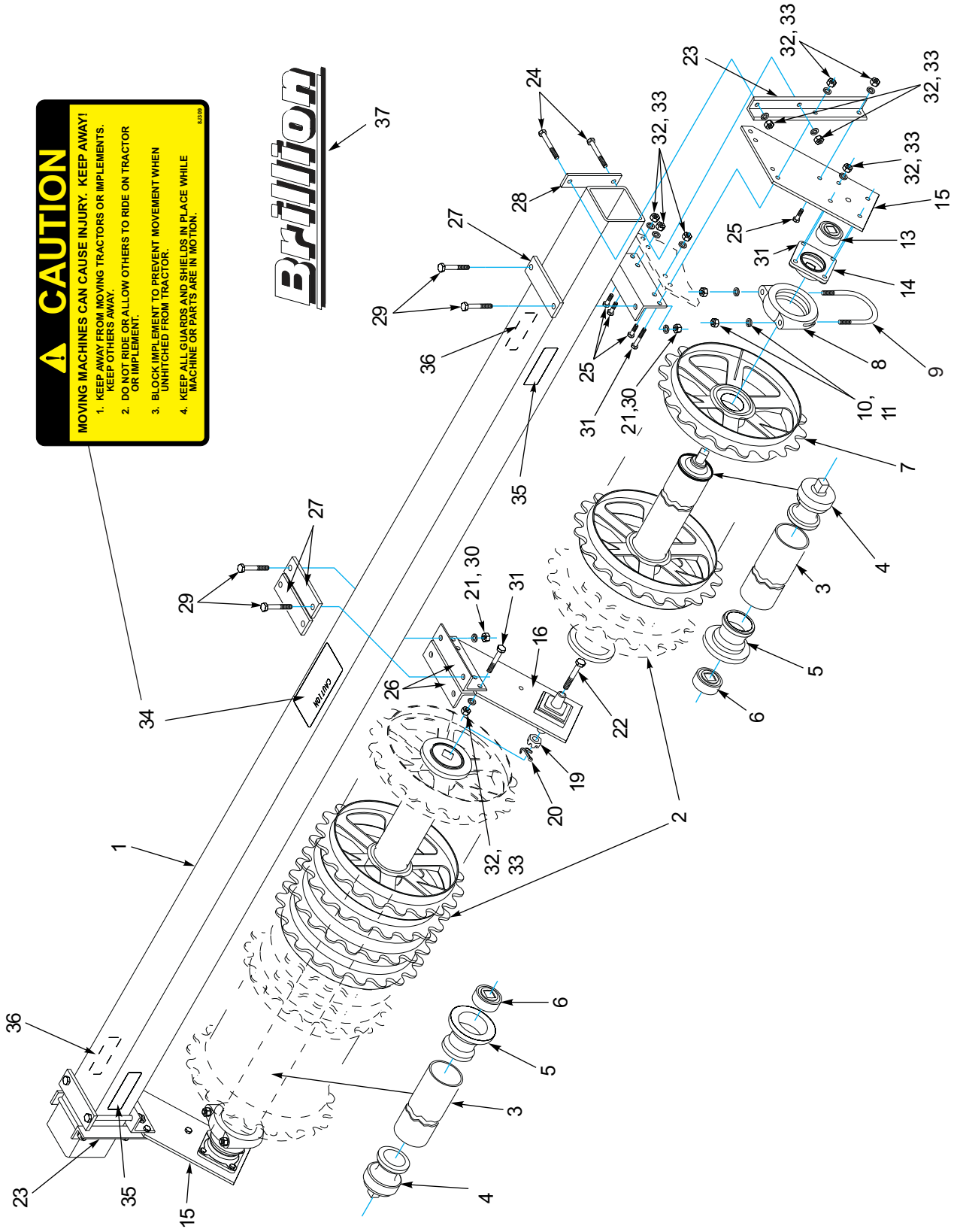


**FRAME & ROLLER ASSEMBLY
MACHINES WITH 4" OUTSIDE DIAMETER PIPE AXLE (10' thru 16' Machines)**

Index No.	Part #	Description	Qty.	Weight (lbs.)
1	5K726	Frame Tube, 10'	1	306.9
	5K727	Frame Tube, 12'	1	361.8
	5K728	Frame Tube, 14'	1	416.8
	5K729	Frame Tube, 16'	1	471.7
2	9J028	Wheel and Axle Assembly (10' Machines)	2	485.0
	8J069	Wheel and Axle Assembly (12' Machines)	2	599.0
	8J068	Wheel and Axle Assembly (14' Machines)	2	671.0
	9J027	Wheel and Axle Assembly (16' Machines)	2	788.0
3	9C062	Pipe Axle Assembly, 10' w/ bearings	2	60.0
	8C986	Pipe Axle Assembly, 12' w/ bearings	2	69.0
	1D138	Pipe Axle Assembly, 14' w/ bearings	2	78.0
	3D199	Pipe Axle Assembly, 16' w/ bearings	2	87.0
4	9C014	Outer Bearing Housing	2	8.7
5	9C015	Inner Bearing Housing	2	9.7
6	9C016	Bearing	4	1.7
7	8J001	Wheel, 20" Ductile Notched	30, 36, 42, 48	28.0
8	9J277	Spacer Ring	4	.2
9	9C031	Axle Clamp, 4"	2	3.7
10	9D673	U-Bolt, 1/2"	2	.7
11	2D535	Set Screw, 1/2"	4	-
12	1C109	Lockwasher, 1/2"	22	-
13	1C390	Nut, 1/2"	22	-
-	8J998	L.H. End Bracket Assembly (items 15-20)	1	15.0
15	8J996	L.H. End Bracket	1	13.5
16	9D669	Straight Axle Mount	4	.9
17	4D529	Slotted Nut	3	.1
18	2C864	Cotter Pin	3	-
19	1B166	Lockwasher	11	-
20	9D864	Drilled Bolt, 3 1/2" Long	2	.9
-	8J999	R.H. End Bracket Assembly (items 21 & 16-20)	1	15.0
21	8J997	R.H. End Bracket	1	13.5
-	8J993	Center Bracket Assembly (items 22, 23 & 16-19)	1	22.0
22	8J994	Center Bracket	1	14.0
23	9D866	Drilled Bolt, 6" Long	1	.6
24	3K318	Angle	2	5.4
25	1J696	Bolt, 1/2" x 7 1/2"	4	.4
26	8C527	Capscrew, 1/2" x 1 1/2"	8	.1
27	8J099	Angle	4	5.3
28	3K321	Strap	6	2.8
29	3K320	Strap	2	1.7
30	7D040	Bolt, 5/8" x 8"	8	.8
31	1C392	Nut, 5/8" Hex	8	.1
32	5D051	Capscrew, 1/2" x 1 3/4"	6	.1
33	8J309	Decal, Caution List	1	-
34	2J430	Decal, Red Reflective	2	-
35	2J431	Decal, Amber Reflective	2	-
36	4K103	Decal, Brillion (2 3/4" x 16 3/4")	4	-

CAUTION
 MOVING MACHINES CAN CAUSE INJURY. KEEP AWAY!
 1. KEEP AWAY FROM MOVING TRACTORS OR IMPLEMENTS.
 2. KEEP OTHERS AWAY.
 3. DO NOT RIDE OR ALLOW OTHERS TO RIDE ON TRACTOR OR IMPLEMENT.
 4. BLOCKY IMPLEMENT TO PREVENT MOVEMENT WHEN UNHITCHED FROM TRACTOR.
 5. KEEP ALL GUARDS AND SHIELDS IN PLACE WHILE MACHINE OR PARTS ARE IN MOTION.

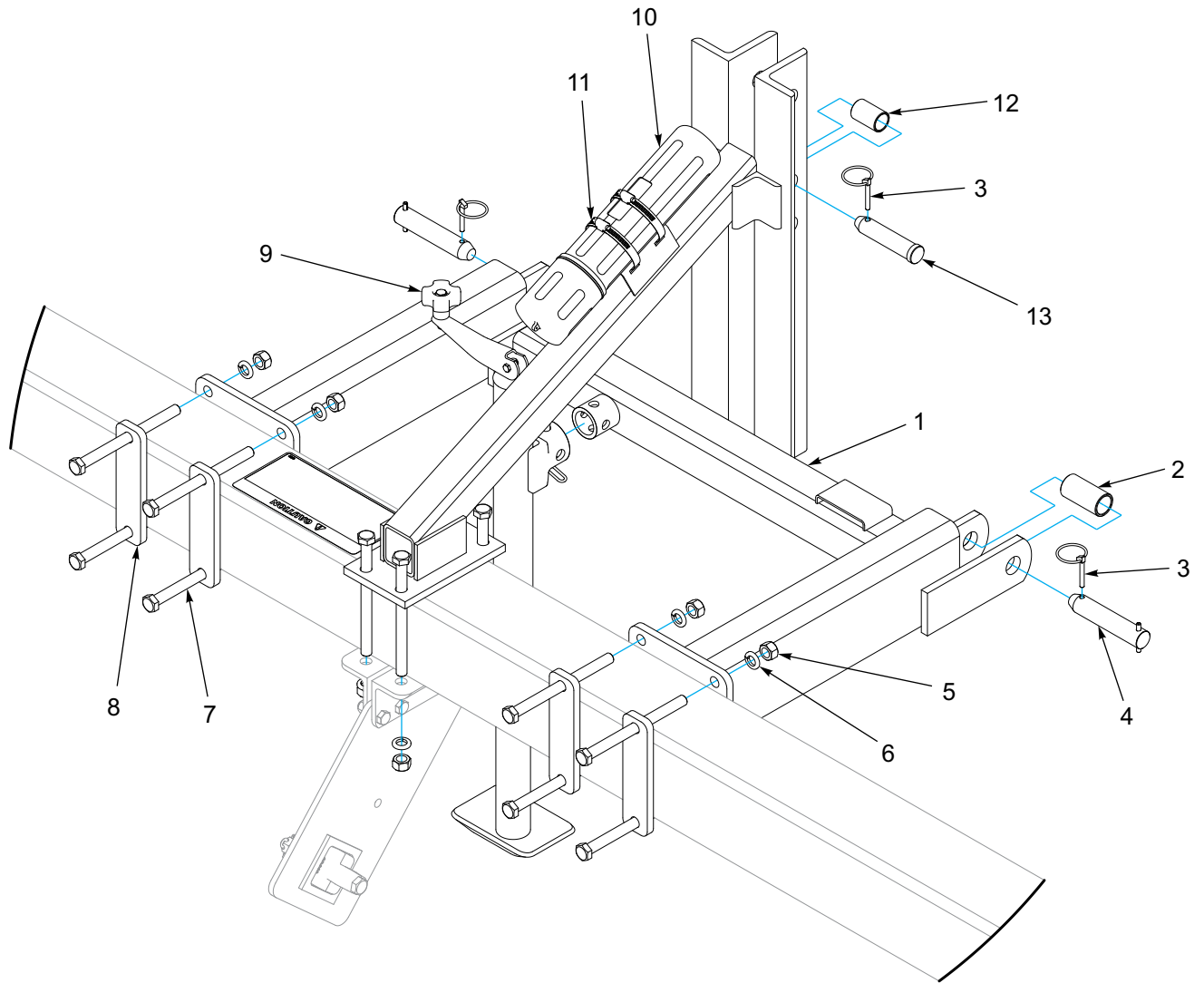
Brilliant



FRAME & ROLLER ASSEMBLY
MACHINES WITH 4 1/2" OUTSIDE DIAMETER PIPE AXLE (18' thru 20' Machines)

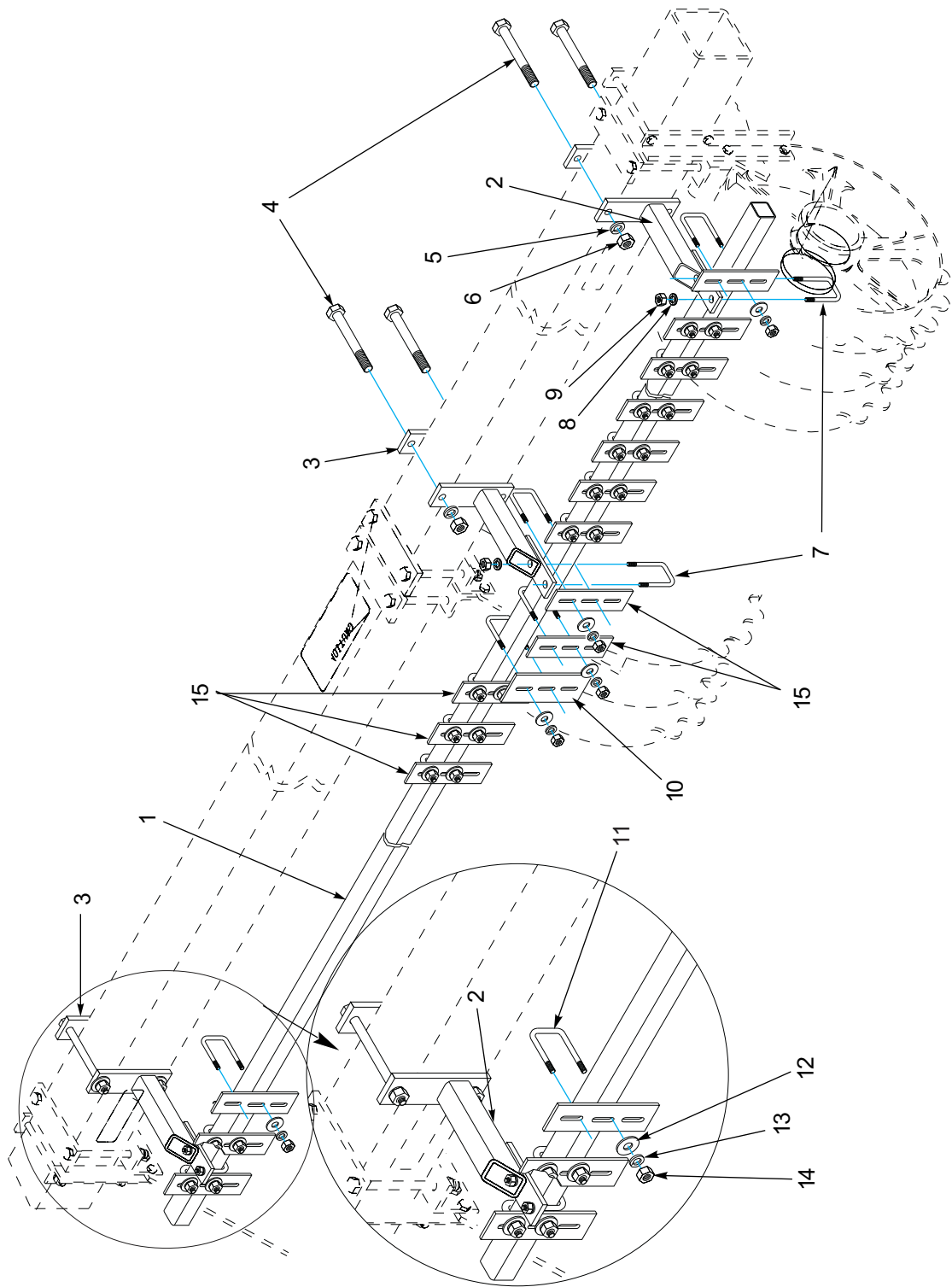
Index No.	Part #	Description	Used	Weight
1	5K730	Frame Tube, 18'	1	531.3
	5K731	Frame Tube, 20'	1	586.2
2	3K323	Wheel and Axle Assembly (18' Machines)	2	932.0
	5K744	Wheel and Axle Assembly (20' Machines)	2	1033.0
3	3J186	Shaft Assembly, 18' Machines	2	139.0
	3J185	Shaft Assembly, 20' Machines	2	151.9
4	9C129	Stub Shaft Mounting	2	13.54
5	5D038	Inner Bearing Housing	2	10.3
6	9C016	Bearing	4	1.7
7	9J808	Wheel, 20" Ductile Notched	24, 30	28.0
8	0A087	Axle Clamp, 4 1/2"	2	3.7
9	1C290	U-Bolt, 7/16"	2	.7
10	1C314	Lock Washer, 7/16"	22	-
11	1C179	Nut, 7/16"	22	-
12	2J417	Bearing [2J516] and Housing [2J515]	2	4.7
13	2J516	Bearing	2	2.2
14	2J515	Bearing Housing	2	2.5
15	9J004	Plate	2	13.5
16	9J007	Center Bracket Assembly	1	22.0
17	9J006	Center Bracket	1	14.0
18	9D669	Straight Axle Mount	4	.9
19	4D529	Slotted Nut	3	.1
20	2C864	Cotter Pin	3	-
21	1B166	Lock Washer	11	-
22	3J860	Drilled Bolt,	2	.9
23	3K318	Angle	2	5.4
24	1J696	Bolt, 1/2" x 7 1/2"	4	.4
25	8C527	Capscrew, 1/2" x 1 1/2"	8	.1
26	8J099	Angle	4	5.3
27	3K321	Strap	6	2.8
28	3K320	Strap	2	1.7
29	7D040	Bolt, 5/8" x 8"	8	.8
30	1C392	Nut, 5/8" Hex	8	.1
31	5D051	Capscrew, 1/2" x 1 3/4"	6	.1
32	1C109	Lockwasher, 1/2"	26	-
33	1C390	Nut, 1/2" Hex	26	-
34	8J309	Decal, Caution List	1	-
35	2J430	Decal, Red Reflective	2	-
36	2J431	Decal, Amber Reflective	2	-
37	4K103	Decal, Brillion (2 3/4" x 16 3/4")	4	-

3 Point Hitch

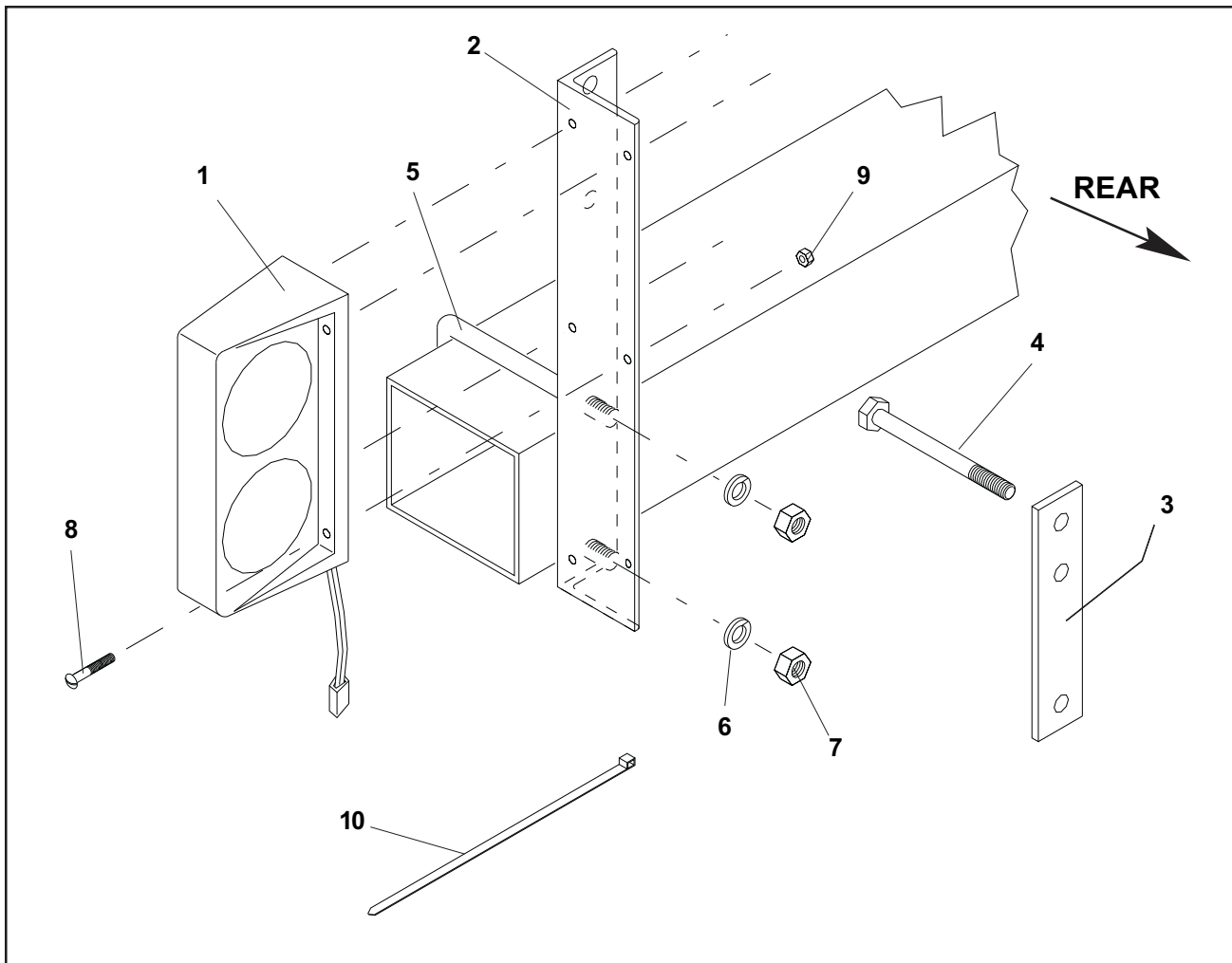


3 Point Hitch

ITEM	PART NUMBER	DESCRIPTION	QTY.
1	5K736	3 POINT HITCH	1
2	5D158	SLEEVE	2
3	5D110	KLIK PIN 1/4 X 1 -1/4	3
4	5D156	PIN ASSEMBLY 1-1/8 X 5-3/4	2
5	1-512-010007-11	NUT, HEX 5/8-11 GR2 ZP	8
6	1-861-010034-15	WASHER, LKG, HLCL SPR, 5/8	8
7	1-654-010059-21	SCREW, HEX CAP, 5/8-11UNC X 8 GR5	8
8	3K321	STRAP	4
9	4J867	DRAWBAR JACK	1
10	1-116-010019	BOX, MANUAL STORAGE	1
11	105-0093	HOSE CLAMP 4-1/2 IDEAL #5264	2
12	5D157	SLEEVE	1
13	6D529	CLEVIS PIN, 1.0 X 4.5	1

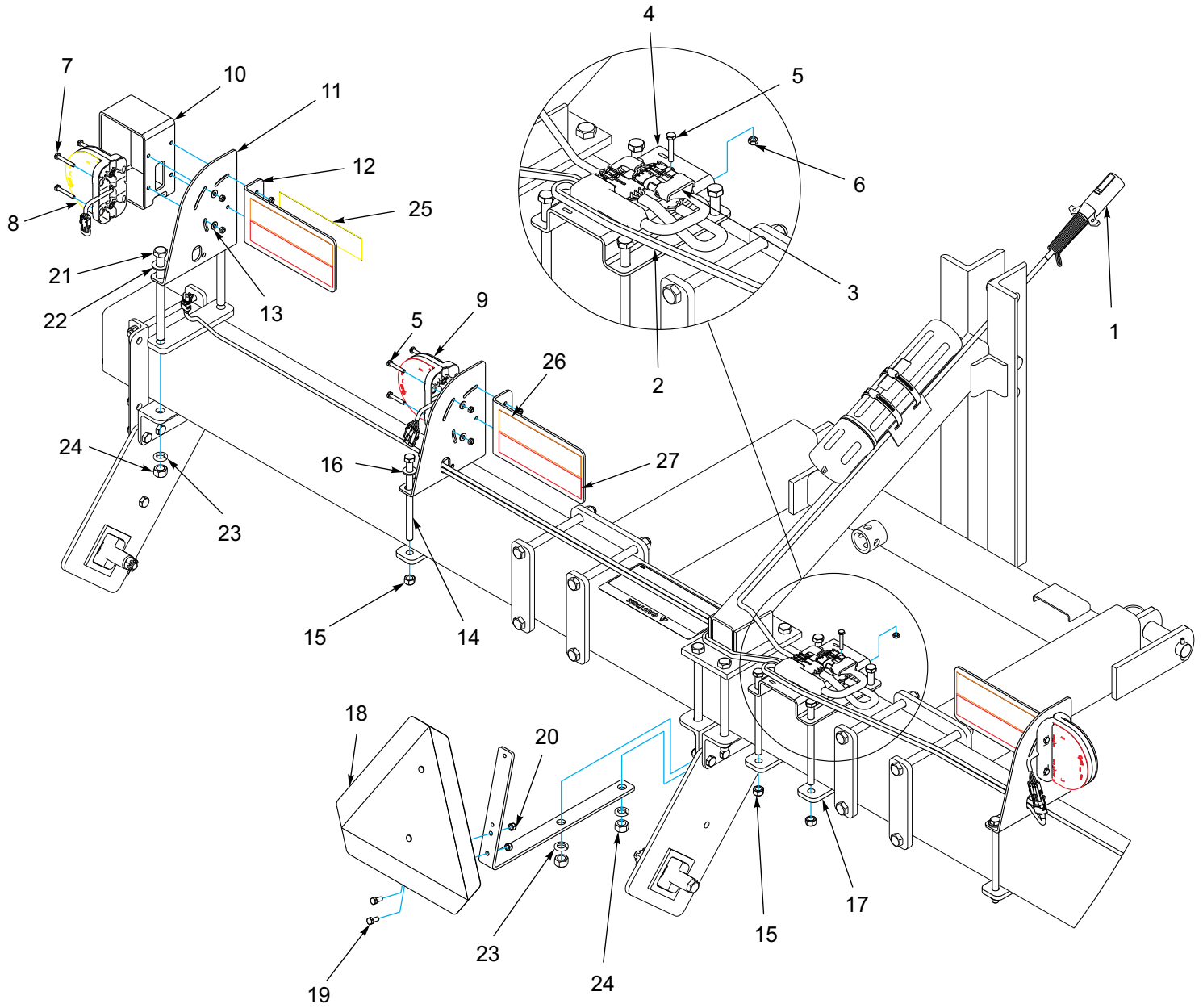


SCRAPERS									
Index No.	Part #	Description	Qt'y.						Weight (Lbs.)
-	5K753	Scraper Kit (10'Machines)	1						121.0
	5K754	Scraper Kit (12'Machines)	1						137.0
	5K755	Scraper Kit (14'Machines)	1						152.0
	5K756	Scraper Kit (16'Machines)	1						168.0
	5K757	Scraper Kit (18'Machines)	1						196.0
	5K758	Scraper Kit (20' Machines)	1						212.0
1	9J056	Scraper Tube - 124"	1						31.5
	9J057	Scraper Tube - 148"	1						37.6
	9J058	Scraper Tube - 172"	1						43.7
	9J059	Scraper Tube - 196"	1						49.8
	3K699	Scraper Tube - 220"	1						55.9
	4K653	Scraper Tube - 244"	1						62.0
2	5K752	Scraper Bracket	3						7.7
3	3K321	Strap	3						2.8
4	7D040	Machine Bolt, 5/8" x 8"	6						.8
5	1B166	Lock Washer, 5/8"	6						-
6	1C392	Nut, 5/8-11-NC	6						.1
7	5D921	U-Bolt, 1/2" x 3 1/4" Deep - 1/2-13 NC x 1" Thrd	3						.5
8	1C109	Lock Washer, 1/2"	6						-
9	1C390	Nut, 1/2-13 NC	6						.1
10	8J079	Center Scraper	1						1.9
			10'	12'	14'	16'	18'	20'	
11	8J015	U-Bolt, 3/8" x 3" Deep - 3/8-16 NC x 1" Thrd.	32	38	44	50	56	62	.2
12	1C182	Washer, 3/8" STD.	64	76	88	100	112	124	-
13	1C183	Lock Washer, 3/8"	64	76	88	100	112	124	-
14	1C277	Nut, 3/8-16 NC	64	76	88	100	112	124	-
15	8J014	Scraper	30	36	42	48	54	60	1.3



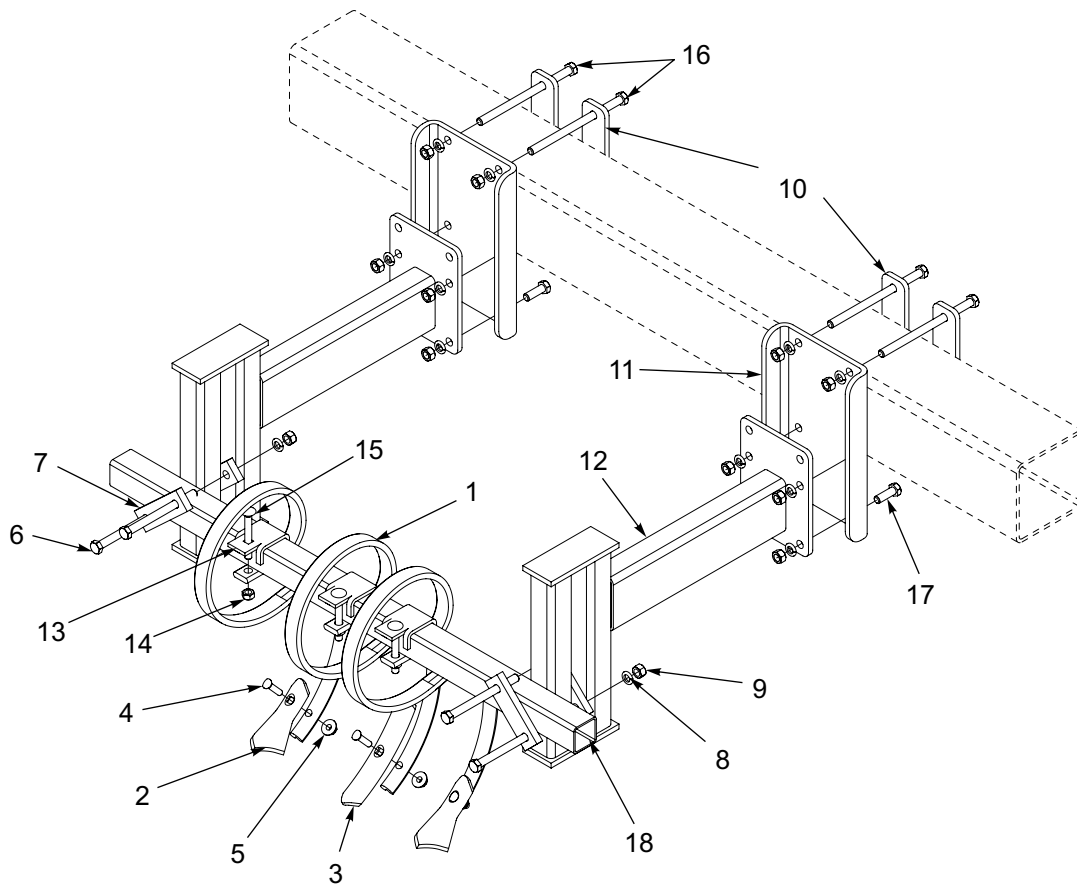
4K910 LIGHT KIT 07/31/2013 and Prior				
Index No.	No.	Description	Q'ty.	Weight (Lbs.)
1	4K772	Dual Lamp, L.H.	1	2.0
	4K773	Dual Lamp, R.H.	1	2.0
2	4K908	Angle	2	4.9
3	4K854	Strap (18'-20' Machines)	2	1.0
4	5C124	Machine Bolt, 1/2" x 7" (18'-20' Machines)	4	.6
5	3J561	U-bolt, 1/2" (10'-16')	2	.9
6	1C109	Lock Washer, 1/2"	4	-
7	1C390	Nut, 1/2-13 NC Hex	4	-
8	4K782	Machine Screw, 1/4" x 1 1/4"	8	-
9	6J150	Locknut, 1/4" Flanged	8	-
10	3J615	Cable Tie	10	-
11	4K780	Wishbone Harness - 10' (not shown)	1	2.0
12	4K781	Ag. Harness - 20' (not shown)	1	4.0

LED Warning Lights



LED Warning Lights - 08/01/2013 and After

ITEM	PART NUMBER	DESCRIPTION	QTY.
1	178514	HARNESS, 7 PIN/4 PIN WP, 10'	1
2	178513	HARNESS, LAMP 66 X 138	1
3	174437	MODULE, AG FLASHER CONTROL	1
4	178530	BRACKET, MODULE MNT, 6IN	1
5	1-654-010047-08	SCREW HX CP, 1/4-20UNC X 1-1/2 G5	10
6	1-512-010005-01	NUT, HEX SLFLKG GRB 1/4-20	18
7	1-654-010047-09	SCREW HX CP, 1/4-20UNC X1-3/4 G5	8
8	174436	LAMP, AG AMBER SINGLE LED	2
9	174437	LAMP, AG RED SINGLE LED	2
10	178534	TUBE, LIGHT SHIELD, 5 X 7	2
11	164698	BRACKET LIGHT MOUNT	4
12	164697	PLATE CONSPICUITY DECAL MOUNT	4
13	1-861-010032-06	WASHER, FLAT 1/4 N ZP/CD	8
14	1-654-010055-20	SCREW, HXCP 1/2-13UNC X 7-1/2 GR5	8
15	1-512-010005-09	NUT, HEX SLFLKG, 1/2-13 GRB	8
16	1-861-010032-14	WASHER, FLAT 1/2" N ZP/CD	4
17	3K320	STRAP	4
18	2P151	SMV W/BRACKET	1
19	1-654-010049-03	SCREW HX CP 5/16-18UNC X 3/4 GR5	2
20	104032	NUT, HX SLF-LKG W/MYL 5/16-18	2
21	1-654-010059-21	SCREW, HEX CAP, 5/8-11UNC X 8 GR5	8
22	1-861-010032-18	WASHER, FLAT 5/8N ZP/CD	4
23	1-861-010034-15	WASHER, LKG, HLCL SPR, 5/8	8
24	1-512-010007-11	NUT, HEX 5/8-11 GR2 ZP	8
25	528934	REFLECTOR - YELLOW	2
26	528938	STRIPE, ORANGE	4
27	528933	REFLECTOR - RED	4
28	3J615	CABLE TIE - 28" (NOT SHOWN)	12
29	105-0228	TYWRAP 8IN LG TY-5272MX (NOT SHOWN)	12

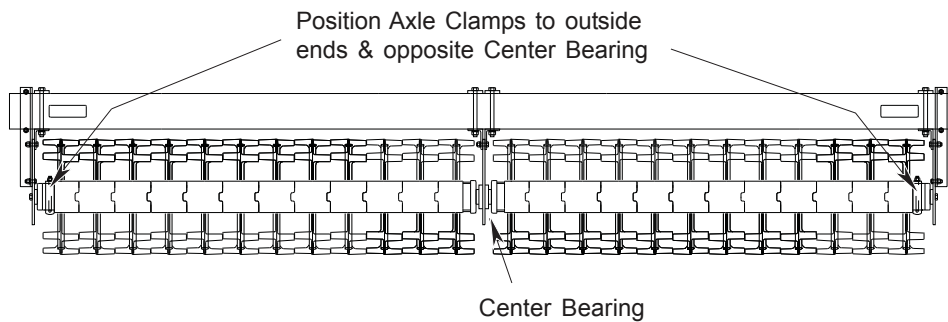


5K977 Wheel Track Remover Kit

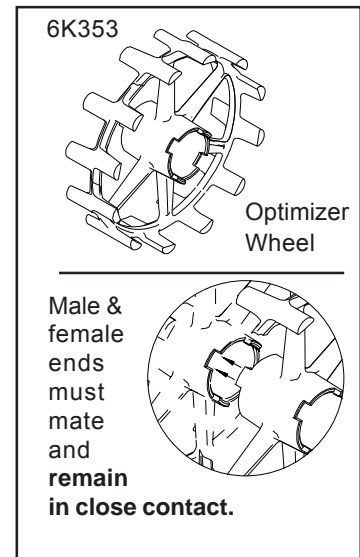
ITEM	PART NUMBER	DESCRIPTION	QTY
1	1J887	S-TINE, 10mm X 32mm	6
2	7D014	DUCKFOOT POINT	4
3	2J155	HEAVY DUTY REVERSIBLE POINT	2
4	7D728	CULTIVATOR BOLT	6
5	5J616	FLANGE LOCK NUT 3/8-16	6
6	1-654-010055-17	SCREW,HEX CAP,1/2-13UNCX6 GR5	8
7	5J358	STRAP (5")	8
8	1-861-010034-13	WASHER, LKG HLCL SPR, 1/2	32
9	1-512-010007-09	NUT, HEX 1/2-13 ZP	32
10	3K320	STRAP (8")	8
11	174888	CHANNEL, ADAPTER	4
12	9J474	BRACKET	4
13	1J834	CLAMP	6
14	101988	NUT,HEXSLF-LKG 7/16-14 GRB	6
15	2J241	SCREW 7/16-14NCX3-1/2RDHD SQNK	6
16	2P158	HHCS, 1/2-13 X 8, GR5, ZP	16
17	1-654-010055-03	SCREW,HEX CAP, 1/2-13UNCX1-1/2	8
18	5K975	TOOTH BAR TUBE	2

PPO PULVERIZERS

SPECIAL NOTE ON OPTIMIZER MODELS



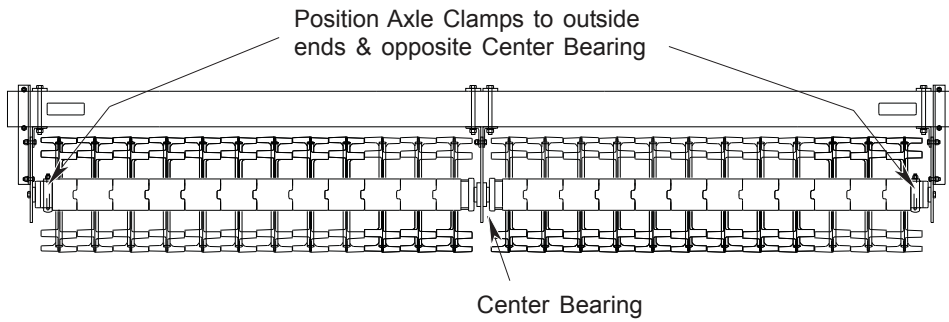
The above diagram shows typical wheel gang positioning of optimizer model pulverizers using optimizer wheels. Position of axle clamps is toward the outside end of the machine. Also, **it is especially important that fit of wheels on the shaft remains tight. Wear and damage can result from wheels that do not fit tightly against one another. Make frequent checks to insure that close fit remains intact. If wheels have jostled apart, adjustment is made by loosening and moving the clamp until the wheels are tightly in place. Then retighten clamp.**



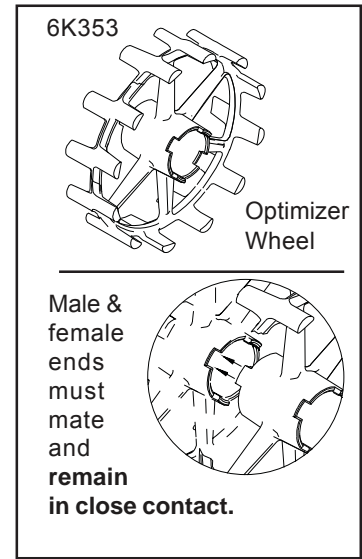
CONTENTS

Introduction	3
Location Reference	3
Parts Ordering	3
Safety Suggestions	4
Safety Signs	4
Decal Location (Also See below for additional decal)	5
Operating Instructions	6
Warning Light Assembly	7
Tire Track Remover Assembly	8
Machine Specifications	23
Optional Equipment	23
Repair Parts	24
Frame Assembly	24
Wheel and Axle Assembly	26
Three Point Hitch	See page 14
Light Kit	See page 18
Tire Track Remover	See page 19
Index	28

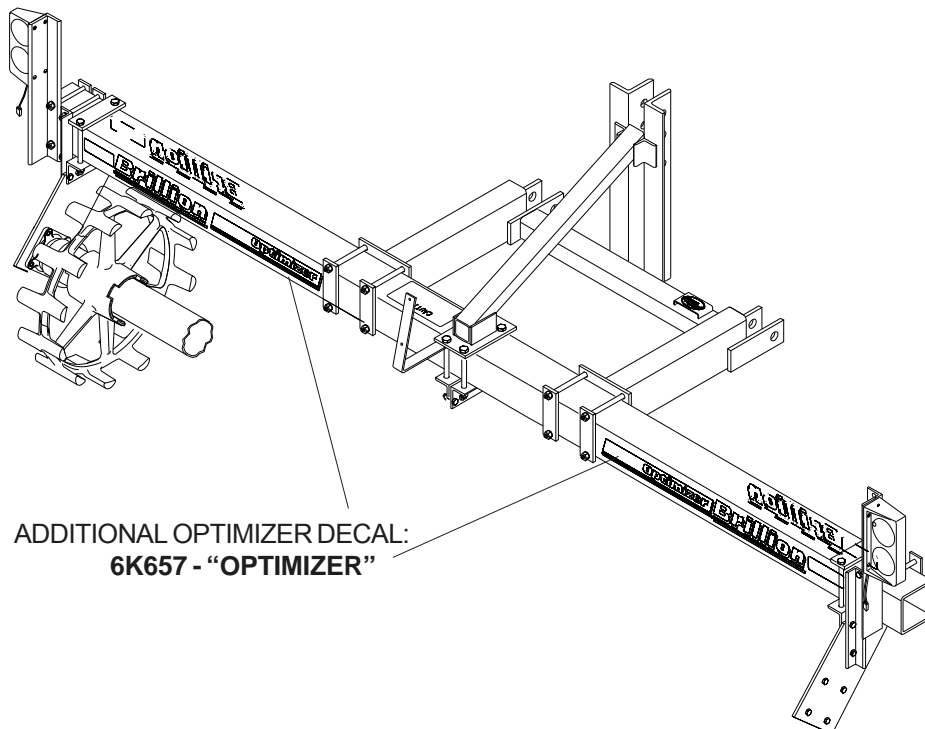
SPECIAL NOTE ON OPTIMIZER MODELS



The above diagram shows typical wheel gang positioning of optimizer model pulverizers using optimizer wheels. Position of axle clamps is toward the outside end of the machine. Also, **it is especially important that fit of wheels on the shaft remains tight. Wear and damage can result from wheels that do not fit tightly against one another. Make frequent checks to insure that close fit remains intact. If wheels have jostled apart, adjustment is made by loosening and moving the clamp until the wheels are tightly in place. Then retighten clamp.**



DECAL LOCATION



MACHINE SPECIFICATIONS - PPO Models - (Subject to Change without Notification)

Model Designation:

Basic model is denoted by “**PPO**” - Pickup Pulverizer with **O**ptimizer wheels.
 The number following indicates the rolling width.
 (example: PPO10 - 10’ Pickup Pulverizer with Optimizer wheels)

Basic Machine Specifications:

Model	Rolling Width	Transport Width	Total No. Wheels	20” Optimizer Wheel Style	Axle Size	Approximate Weight (Lbs.)
PPO-10	10’	11’ 0”	20	(18) 6K353 & (2) 6K354	4 1/2”	1653
PPO-12	12’	13’ 2”	24	(20) 6K353 & (4) 6K354	4 1/2”	1997
PPO-14	14’	15’ 2”	28	(24) 6K353 & (4) 6K354	4 1/2”	2253
PPO-16	16’	17’ 2”	32	(28) 6K353 & (4) 6K354	4 1/2”	2607
PPO-18	18’	19’ 2”	36	(32) 6K353 & (4) 6K354	4 1/2”	2921
PPO-20	20’	21’ 2”	40	(36) 6K353 & (4) 6K354	4 1/2”	3216

Frame: 3/8” Wall Tubing

Hitch: Category II 3 Point

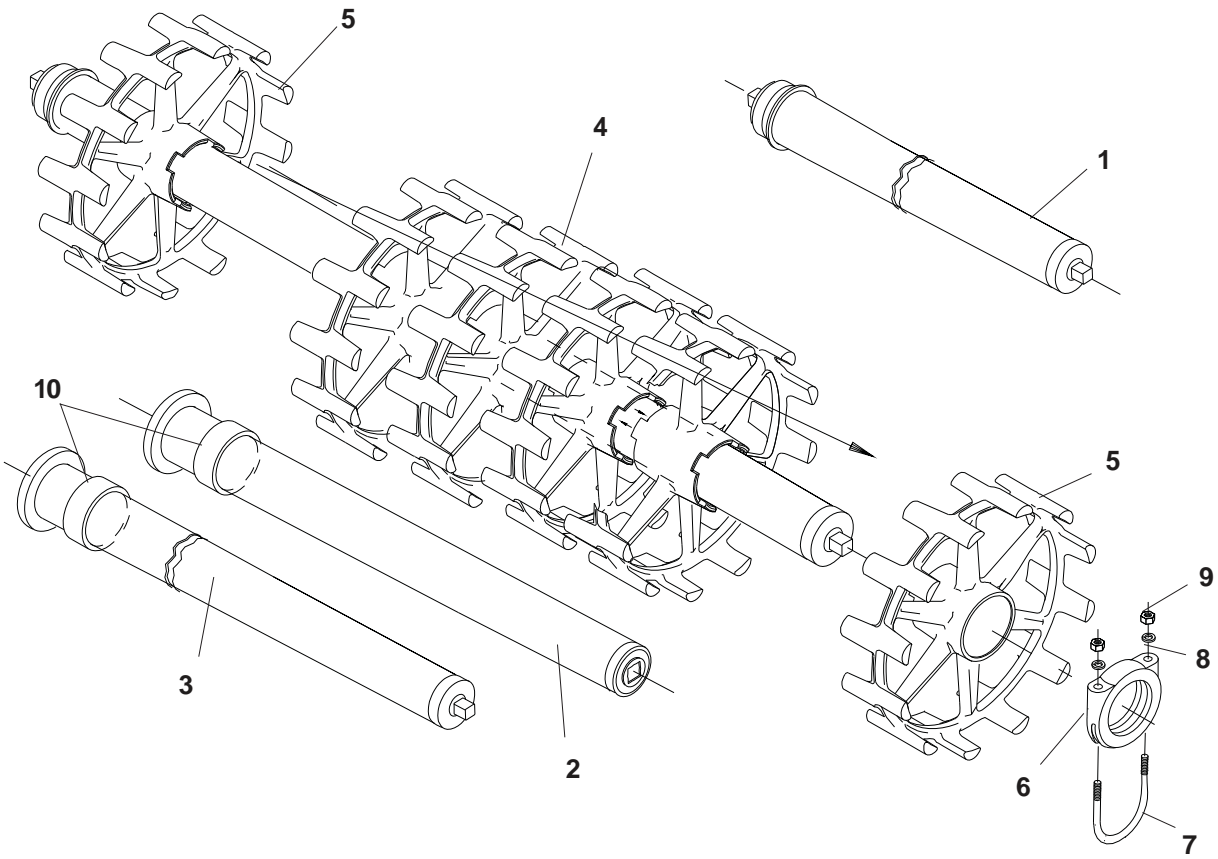
OPTIONAL EQUIPMENT

5K977 Tire Track Remover Kit213#

**FRAME TUBE with BRACKET ASSEMBLIES
OPTIMIZERS WITH 4 1/2" OUTSIDE DIAMETER PIPE AXLE**

Index No.	Part #	Description	Used	Weight
1	5K726	Frame Tube, 10'	1	306.9
	5K727	Frame Tube, 12'	1	361.8
	5K728	Frame Tube, 14'	1	416.8
	5K729	Frame Tube, 16'	1	471.7
	5K730	Frame Tube, 18'	1	531.3
	5K731	Frame Tube, 20'	1	586.2
2	8J998	L.H. End Bracket Assembly (items 3-8)	1	15.0
3	8J996	L.H. End Bracket	1	13.5
4	9D669	Straight Axle Mount	4	.9
5	4D529	Slotted Nut	3	.1
6	2C864	Cotter Pin	3	-
7	1B166	Lockwasher	11	-
8	9D864	Drilled Bolt, 5/8" x 3 1/2" Long	2	.9
9	8J999	R.H. End Bracket Assembly (items 10 & 4-8)	1	15.0
10	8J997	R.H. End Bracket	1	13.5
11	9J004	Plate	2	13.5
12	9J007	Center Bracket Assembly (items 13, 14, & 4-7)	1	22.0
13	9J006	Center Bracket	1	14.0
14	3J860	Drilled Bolt, 5/8" x 7 1/2" Long	2	.9
15	2J417	Bearing & Housing	2	4.7
16	2J516	Bearing	2	2.2
17	2J515	Bearing Housing	2	2.5
18	3K318	Angle	2	5.4
19	1J696	Bolt, 1/2" x 7 1/2"	4	.4
20	8C527	Capscrew, 1/2" x 1 1/2"	8	.1
21	8J099	Angle	4	5.3
22	3K321	Strap	4	2.8
23	3K320	Strap	2	1.7
24	7D040	Bolt, 5/8" x 8"	8	.8
25	1C392	Nut, 5/8" Hex	8	.1
26	5D051	Capscrew, 1/2" x 1 3/4"	6	.1
27	1C109	Lockwasher, 1/2"	26	-
28	1C390	Nut, 1/2" Hex	26	-
29	8J309	Decal, Caution List	1	-
30	2J430	Decal, Red Reflective	2	-
31	2J431	Decal, Amber Reflective	2	-
32	4K103	Decal, Brillion (2 3/4" x 16 3/4")	4	-
33	6K657	Decal, Optimizer	2	-

OPTIMIZER MODELS WITH
20" OPTIMIZER WHEELS (P0T)



OPTIMIZER MODELS WITH 20" OPTIMIZER WHEELS (POT)

Index No.	Part No.	Description	No. Used Per Machine						Weight
			10'	12'	14'	16'	18'	20'	
*	6K481	Wheel & Axle Assembly	1						1112
	6K485	Wheel & Axle Assembly		2					678
	6K488	Wheel & Axle Assembly			2				787
	6K490	Wheel & Axle Assembly				2			896
	6K492	Wheel & Axle Assembly					2		1019
	6K494	Wheel & Axle Assembly						2	1128
1	2J374	Pipe Axle Assem. w/ stub shafts	1	0	0	0	0	0	135
2	1K324	Pipe Axle Assem. w/ brngs.	0	2	0	0	0	0	92
	1K325	Pipe Axle Assem. w/ brngs.	0	0	2	0	0	0	103
	1K326	Pipe Axle Assem. w/ brngs.	0	0	0	2	0	0	114
3	3J186	Pipe Axle Assem. w/ brng. & stub shaft	0	0	0	0	2	0	139
	3J185	Pipe Axle Assem. w/ brng. & stub shaft	0	0	0	0	0	2	151.9
4	6K353	Optimizer Wheel (4 1/2" dia. bore)	18	20	24	28	32	36	49
5	6K354	Optimizer End Wheel (4 1/2" dia. bore)	2	4	4	4	4	4	45
6	0A087	Axle Clamp, 4 1/2"	1	2	2	2	2	2	4.3
7	1C290	U-Bolt, 7/16"	1	2	2	2	2	2	.5
8	1C314	Lock Washer, 7/16"	2	4	4	4	4	4	-
9	1C179	Nut, 7/16"	2	4	4	4	4	4	-
10	6K484	Spacer Ring	0	2	2	2	2	2	1.0

INDEX

Part No.	Index No.	Page No.	Part No.	Index No.	Page No.	Part No.	Index No.	Page No.
	A			06	13		30	23
0A087	08	13	9C031	09	11	2J431	35	11
	06	25	9C062	03	11		36	13
			9C129	04	13		31	23
	B		9C182	04	11	2J515	14	13
1B166	05	17	9C183	05	11		17	23
	09	15				2J516	13	13
	19	11		D			16	23
	21	13	1D138	03	11	3J185	03	13
	07	23	2D535	11	11		03	25
			3D199	03	11	3J186	03	13
	C		4D529	17	11		03	25
1C109	06	18		19	13	3J561	05	18
	06	19	5D051	05	23	3J615	10	18
	08	17		31	13	3J860	22	13
	12	11		32	11		14	23
	32	13	5D110	26	23	4J700	12	19
	27	23	5D156	05	15	4J867	02	15
1C179	11	13	5D157	07	15	5J080	09	19
	09	25	5D158	06	15	5J082	08	19
1C182	12	17	5D202	03	15	5J358	02	19
1C183	13	17	5D921	05	13	5J616	16	19
1C277	14	17	6D529	07	17	6J150	09	18
1C290	09	13	7D014	04	15	8J001	07	11
	07	25	7D040	14	19	8J014	15	17
1C314	10	13		04	17	8J015	11	17
	08	25		08	15	8J068	02	11
1C390	05	19		29	13	8J069	02	11
	07	18		30	11	8J079	10	17
	09	17	7D728	24	23	8J099	26	13
	13	11	9D669	15	19		33	11
	33	13		16	11		21	23
	28	23		18	13	8J309	34	13
1C392	06	17	9D673	04	23		29	23
	10	15	9D864	10	11	8J993	-	11
	30	13		20	11	8J994	22	11
	31	11	9D866	08	23	8J996	15	11
	25	23		23	11		03	23
1C675	04	19				8J997	21	11
2C864	18	11		J			10	23
	20	13	1J696	10	19	8J998	-	11
	06	23		24	13		02	23
5C124	04	18		25	11	8J999	-	11
5C392	11	19		19	23		09	23
8C527	25	13	2J155	13	19	9J004	15	13
	26	11	2J374	01	25		11	23
	20	23	2J417	12	13	9J006	17	13
8C986	03	11		15	23		13	23
9C016	06	11	2J430	34	11	9J007	16	13
				35	13		12	23
						9J027	02	11

Part No.	Index No.	Page No.	Part No.	Index No.	Page No.	Part No.	Index No.	Page No.
9J028	02	11	5K736	01	15			
9J029	11	15	5K737	-	11			
9J056	01	17	5K738	-	11			
9J057	01	17	5K739	-	11			
9J058	01	17	5K740	-	11			
9J059	01	17	5K741	-	13			
9J277	08	11	5K742	-	13			
9J474	01	19	5K744	02	13			
9J808	07	13	5K752	02	17			
			5K753	-	17			
	K		5K754	-	17			
1K324	02	25	5K755	-	17			
1K325	02	25	5K756	-	17			
1K326	02	25	5K757	-	17			
3K318	23	13	5K758	-	17			
	24	11	5K975	03	19			
	18	23	6K353	04	25			
3K320	07	19	6K354	05	25			
	28	13	6K481	*	25			
	29	11	6K485	*	25			
	23	23	6K484	10	25			
3K321	03	17	6K488	*	25			
	27	13	6K490	*	25			
	28	11	6K492	*	25			
	22	23	6K494	*	25			
3K323	02	13	6K657	33	22			
3K699	01	17						
4K103	36	11						
	37	13						
	32	23						
4K653	01	17						
4K772	01	18						
4K773	01	18						
4K780	11	18						
4K781	12	18						
4K782	08	18						
4K854	03	18						
4K908	02	18						
5K726	01	11						
	01	23						
5K727	01	11						
	01	23						
5K728	01	11						
	01	23						
5K729	01	11						
	01	23						
5K730	01	13						
	01	23						
5K731	01	13						
	01	23						



Intertek

Equipment from Landoll Company, LLC is built to exacting standards ensured by ISO 9001 registration at all Landoll manufacturing facilities.

Pick-up Pulverizer Operator's and Parts Manual PPD Series 10' through 20' PPO Series 10' through 20'

Re-Order Part Number 5K804rev0813

LANDOLL COMPANY, LLC

1900 North Street

Marysville, Kansas 66508

(785) 562-5381

800-428-5655 ~ WWW.LANDOLL.COM



Copyright 2020. Landoll Company, LLC - Author Tech Comm Bill

“All rights reserved, including the right to reproduce this material or portions thereof in any form.”