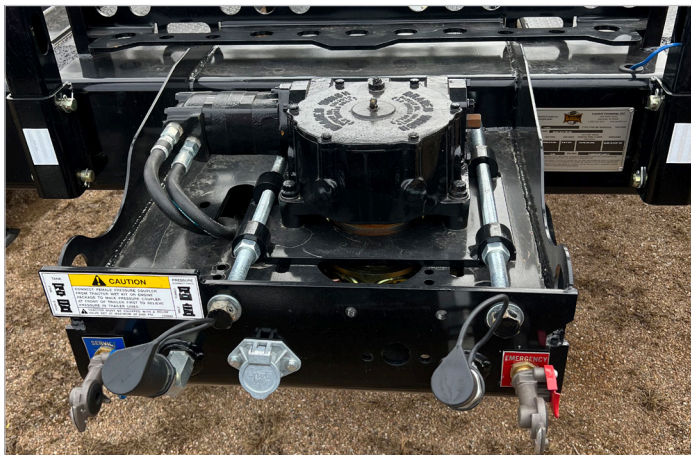


343 CONTAINER TRAILER



Three Recovery Systems -- Chain Drive, 12,000 lb. or 20,000 lb. Winch



• 12,000 lb. Chain Drive Gear Box



• 12,000 lb. or 20,000 lb. Planetary Winch

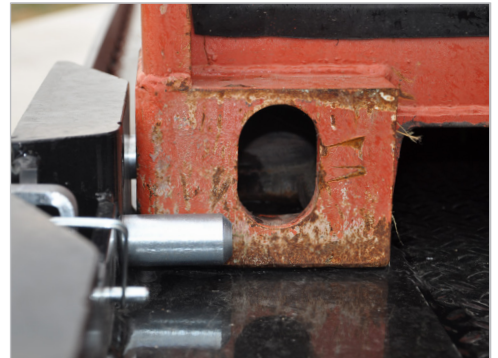


PROVEN SOLUTIONS FOR YOUR HAULING NEEDS!
1-800-428-5655 | www.landoll.com/trailers

STANDARD & OPTIONAL EQUIPMENT / FEATURES

Model 343 Container Trailer

The **Landoll Model 343** allows users to haul standard ISO containers as well as domestic hi-cube containers. The inside guide system is standard while the side guide panels are optional. The side guide panels have two positions: one to guide 96" wide containers, the other to guide 102" boxes. The trailer is supplied with a standard wireless remote control hydraulic system for operator safety and improved efficiency.



Model	Length	Width	Tires	Hauls Containers
343-39	39'	102"	255/70R 22.5	up to 40' / 2-20s
343-43	43'	102"	255/70R 22.5	up to 40' / 2-20s
343-46	46'	102"	255/70R 22.5	combinations up to 48'
343-50	50'	102"	255/70R 22.5	combinations up to 53'

Standard Equipment:

- 10,000 lb. Capacity
- 25,000 lb. Air Brake Axle
- SAF-Holland/Neway Air Ride RLU228
- Wireless Remote Control
- Chain Drive Load System
- 1 Tool Box 42"W x 28"D x 9"H

A 45" Fifth Wheel Height is Required When Hauling High-Cube Containers
 For a full listing of standard and optional equipment visit www.landoll.com/trailers

Pictures and content may include optional equipment and/or standard features that may not be standard on all models. Specification and design subject to change without notice. Weights and measurements are best estimates and should not be treated as actual. There are other features and optional equipment available. If you have any questions, consult the factory. Capacity ratings are frame capacities only. Actual load capacities may be restricted by factors such as gross axle weight ratings (GAWR) or state and federal regulations.



CALL 1-800-428-5655
REMEMBER: QUALITY IS ALWAYS A BARGAIN!

1900 North Street | Marysville, KS 66508 | Phone:785-562-5381 | Fax:888-293-6779

SCAN FOR MORE

