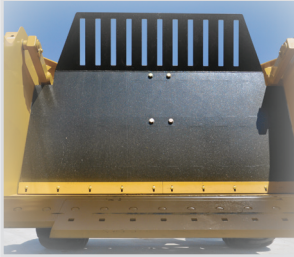


ICON INDUSTRIES

AG-11/AG-13 SCRAPER

The industry's best all-around earthmoving system.



Patented Hydraulic
Eject SwingWall



Front Gate with
Indicator



Exclusive Front Dolly



Smooth Interior for
Excellent Clean Out



The AG-11 and 13 are engineered around years of innovation and features that have been tested in the demanding industrial sector. These features are now available in an earthmoving system that is suited to your operation.

The patented SwingWall ensures smooth, rapid and clean ejection cycles. The front gate and eject wall are finished in dirt-resisting epoxy to maintain efficiency in the stickiest of soils. The double-wall frame sidewall design increases overall strength and rigidity, while protecting hydraulics.

The ICON AG-11 and 13 come standard with two 20,000 lb. hubs on the rear and two 12,000 lbs. hubs on the dolly. With an estimated total loaded weight of 52,000 lbs., the AG-11 and 13 have 12,000 lbs. of excess carrying capacity. Just one more example of ICON's commitment to exceeding performance standards.

- Frame engineered around 80,000 and 100,000 tensile-strength steel for maximum durability and reliability.
- Hydraulic operation of the gate and wall is controlled by synchro-sequencing valve.
- Exclusive dolly places up to 3,000 lbs. of weight from the load on the tractor drawbar, assisting with traction when loading.
- Dolly swivel engineered to provide 50° of horizontal movement and 70° of lateral movement.
- 3,000-psi rated hydraulic hoses and heavy-duty welded hydraulic cylinders are designed for trouble-free loading cycles.

SPECIFICATIONS

	AG-11 Scraper	AG-13 Scraper
Heaped Capacity	11.2 yards	13.1 yards
Struck Capacity	9.1 yards	11.4 yards
Cutting Width	8'	8'
Transport Type	Dolly wheels in front	Dolly wheels in front
Hitch Type	Swivel single lip	Swivel single lip
Transport Width	9'	9'
Transport Height	7'	7'
Overall Length	29'	29'
Ground Clearance	22"	22"
Cutting Edges	4' frost bit, and (2) 2' blades	4' frost bit, and (2) 2' blades
Tires	(2) front dolly tires 500/70R x 24, (2) rear tires 20.5 x 25, 20 ply	(2) front dolly tires 500/70R x 24, (2) rear tires 20.5 x 25, 20 ply
Wheels	10-bolt front/rear	10-bolt front/rear
Spindles	3 1/8" front and 4 1/2" rear	3 1/8" front and 4 1/2" rear
Hubs	20k rear and 12k front	20k rear and 12k front
Number of Hyd. Hoses	4 (2 sets)	4 (2 sets)
Bowl Opening	45 5/16"	45 5/16"