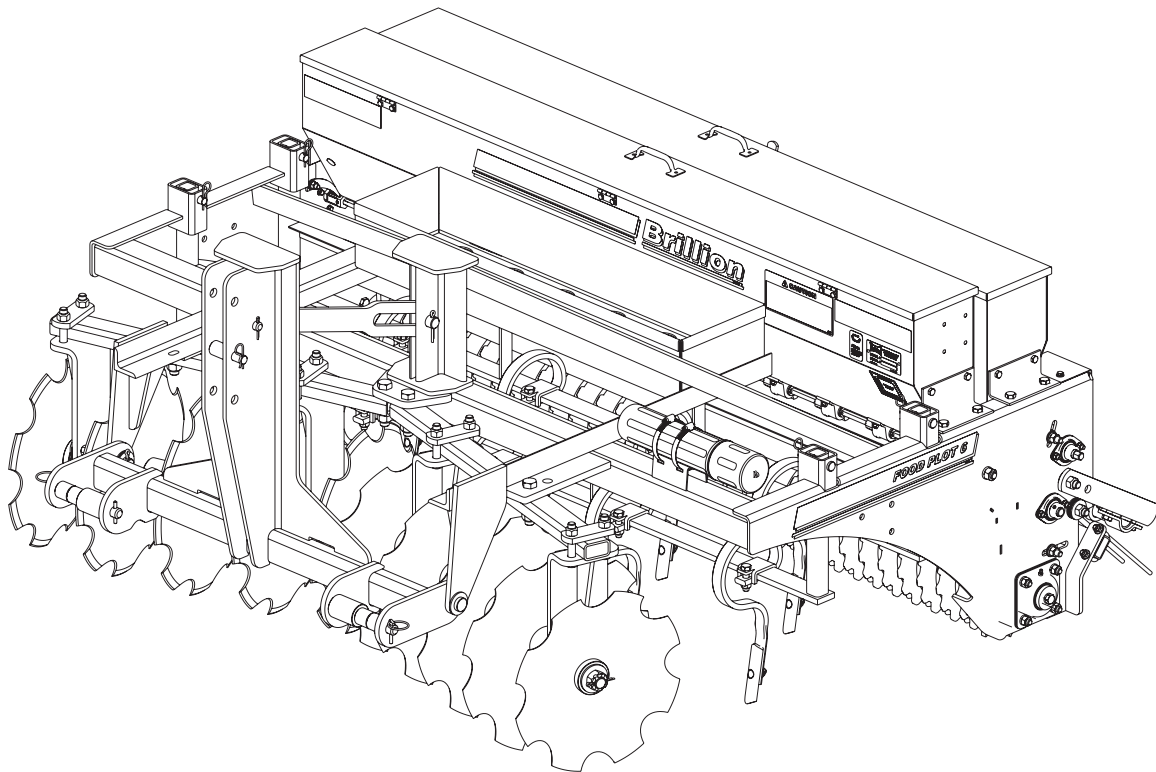




Food Plot Seeder Models FPS6, FPST6, FPSB6, FPSBT6 Parts Manual



LANDOLL COMPANY, LLC

1900 North Street

Marysville, Kansas 66508

(785) 562-5381

800-428-5655 ~ WWW.LANDOLL.COM

Manuals for Food Plot Seeder

Manual Number	Manual Type
2P102	Operator's Manual
2P103	Parts Manual

Table of Contents

1 Illustrated Parts List

Frame, Deflector, and Rear Roller	1-2
Standard Roller	1-4
Positive Drive Roller - Optional	1-5
Scraper (After Serial #203912)	1-6
Frame and Scraper (Before Serial #203912)	1-7
3-PT Hitch	1-9
Drawbar	1-10
Rockshaft with Hydraulic Cylinder	1-12
Rockshaft with Ratchet	1-14
Hub and Spindle Assembly	1-17
Hydraulic Layout	1-18
Disc Gangs	1-20
S-Tine	1-21
Meter Seed Box	1-22
Seed Shaft Assembly	1-24
Sprocket Assembly, 26T	1-25
Agitator Seed Box Assembly	1-26
Agitator Sprocket Assembly, 23T	1-29
Meter Seed Box Transmission	1-30
Agitator Seed Box Transmission	1-32
Meter Seed Box and Agitator Seed Box Transmission	1-34
Coil Tine Assembly - Optional	1-36
Coil Tine and Pipe Assembly	1-37
Cargo/Rock Box - Optional	1-38
Acre Meter Kit - Optional	1-39
Acre Meter Assembly	1-40
Hydraulic Cylinder, 2-1/2 x 6 - Lion - 671652	1-41
Decals	1-43
Decal Locations	1-45

2 Glossary

3 Index

Illustrated Parts List

Instructions for Ordering Parts

**** Repair parts must be ordered through an authorized dealer ****

DEALER INSTRUCTIONS FOR ORDERING PARTS FROM LANDOLL PARTS DISTRIBUTION CENTER

PHONE #: 800-423-4320 OR 785-562-5381

FAX #: 888-527-3909

ORDER ONLINE: Dealer.landoll.com

DATA PLATE

The Data Plate lists the model and serial number of the equipment. It is located on the right side of the Food Plot Seeder. **See Figure 1-1.**

SERIAL NUMBER NOMENCLATURE

The following information will help decode the Landoll serial number.

FSD24000100 = xxmysssss

xx	= model series (i.e. "FS" for all Food Plot Seeders)
m	= month of manufacture (ex. "D" means April. The letter I is not used.)
yy	= last digits of the year manufactured (ex. "24" means 2024)
sssss	= Sequential number used to track warranty and service information.

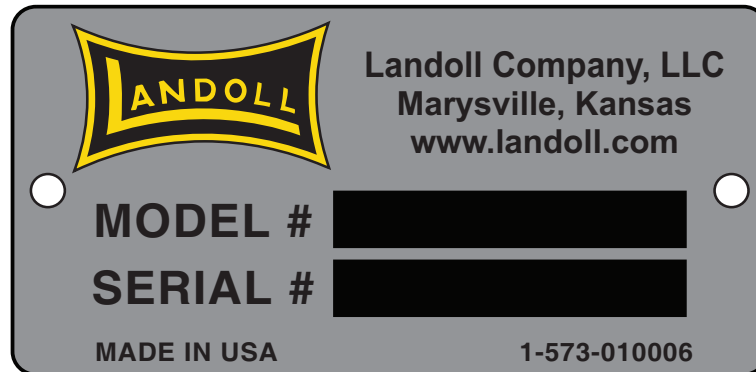


Figure 1-1: Data Plate

Frame, Deflector, and Rear Roller

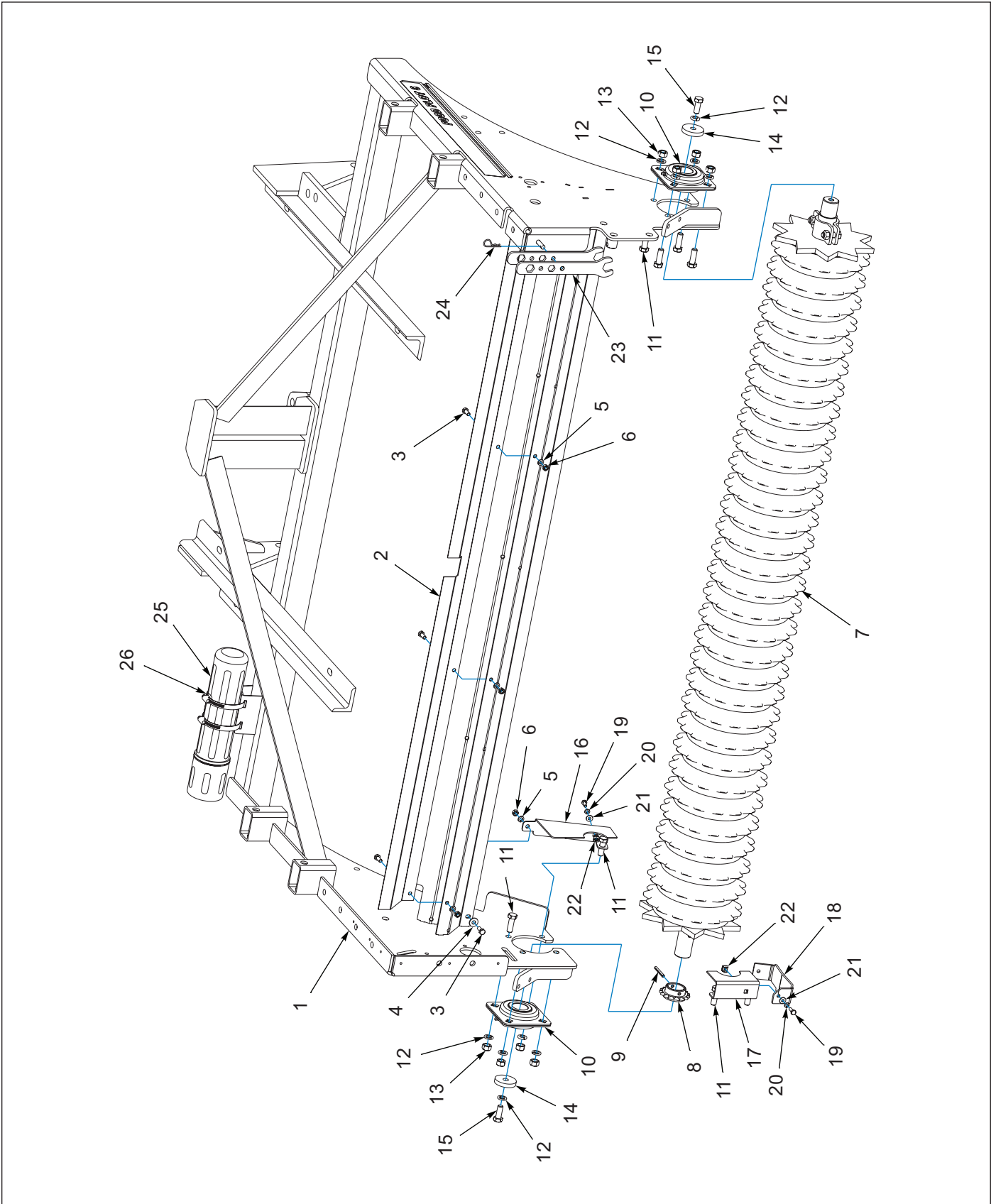


Figure 1-2: Frame, Deflector and Scraper

Frame, Deflector, and Rear Roller

ITEM	PART NUMBER	DESCRIPTION	QTY
1	163324	FRAME WLDMT, FPS	1
2	2P086	DEFLECTOR, SEED	1
3	1-654-010049-03	SCREW HX CP 5/16-18UNCX3/4GR5	5
4	1-861-010032-09	WASHER, FLAT 5/16 W ZP/CD	1
5	1-861-010034-10	WASHER,LKG 5/16	5
6	1-512-010007-06	NUT, HEX 5/16-18 GR2 ZP	5
7	2P002	ROLLER ASM, FPS6 (SEE PAGE 1-4)	1
8	2P012	SPROCKET, 17 TOOTH	1
9	1-647-010004221	PIN,SPRING 1/4X2 SLOTTED	1
10	1-065-010011	BEARING FLANGED 1-1/2ID	2
11	1-654-010055-03	SCREW,HEX CAP,1/2-13UNCX1-1/2	8
12	1-861-010034-13	WASHER, LKG HLCL SPR, 1/2	10
13	1-512-010007-09	NUT, HEX 1/2-13 GR2 ZP	8
14	9J338	WASHER (1/2 X 2-1/16 X 3/8)	2
15	104665	SCREW,HX CP 1/2-20X1-1/4 GR8	2
16	163315	GUARD, LOWER FRONT CHAIN	1
17	163316	GUARD LOWER REAR CHAIN	1
18	231008	SHIELD, CHAIN	1
19	1-654-010047-04	SCREW,HEX CAP,1/4-20X3/4 GR5	2
20	1-861-010034-09	WASHER, LKG HLCL SPR, 1/4	2
21	1-861-010032-06	WASHER, FLAT 1/4 N ZP/CD	2
22	207051	CAGE NUT, 1/4-20	2
23	6K032	WRENCH - 15/16 LONG	2
24	6C400	HAIR PIN COTTER	1
25	1-116-010019	BOX, MANUAL STORAGE	1
26	105-0093	HOSE CLAMP 4-1/2 IDEAL #5264	2

Standard Roller

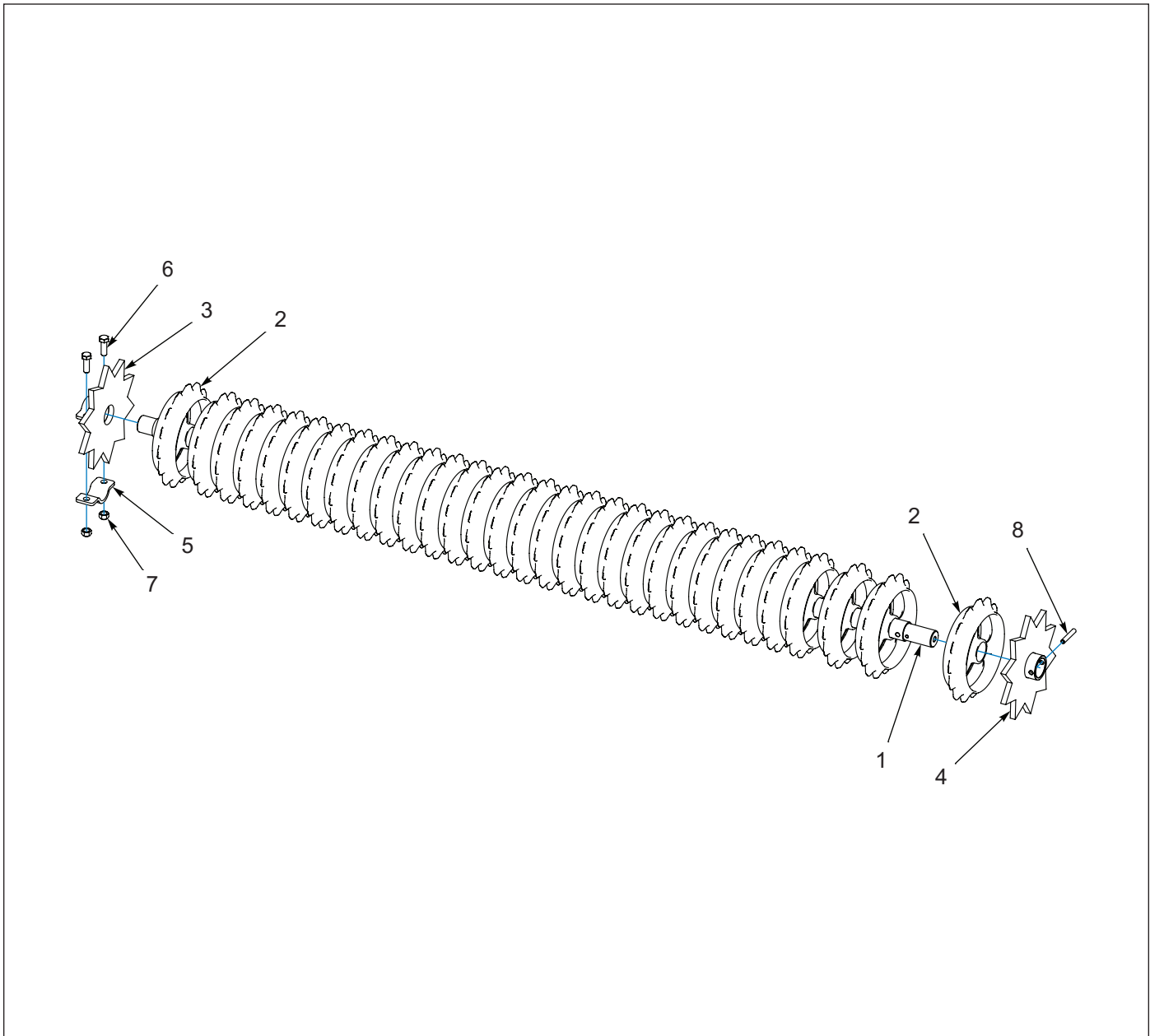


Figure 1-3: Standard Roller

Standard Roller

ITEM	PART NUMBER	DESCRIPTION	QTY
	2P002	ROLLER ASM,FPS6	1
1	2P008	SHAFT, ROLLER	1
2	5C284	CASTING, REAR WHEEL (1-3/4" SHAFT)	31
3	2P004	SPROCKET, STAR WLD	1
4	2P009	SPROCKET, STAR COLLAR	1
5	2K654	CLAMP	1
6	1-654-010055-03	SCREW,HEX CAP,1/2-13UNCX1-1/2	2
7	1-512-010005-09	NUT,HEX,SLFLKG, 1/2-13 GRB	2
8	127712	PIN SPRING SLOTTED 3/8X2-1/4	1

Positive Drive Roller - Optional

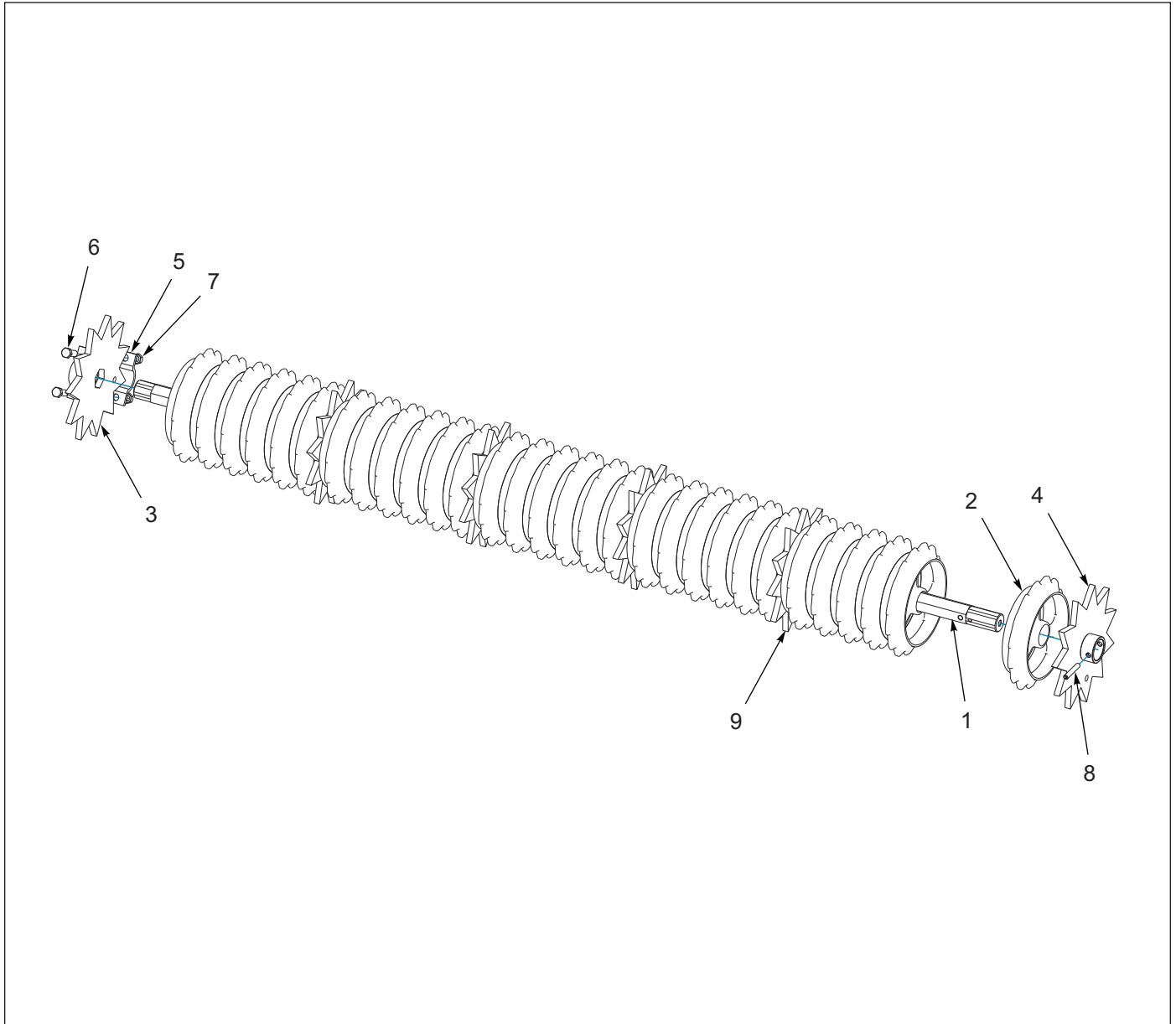


Figure 1-4: Positive Drive Roller - Optional

Positive Drive Roller - Optional

ITEM	PART NUMBER	DESCRIPTION	QTY
	163308	ROLLER ASM,FPS6POSITIVE DRIVE	1
1	163309	SHAFT, 1-1/2 HEX ROLLER	1
2	5C284	SAND WHEEL (1-3/4" SHAFT)	30
3	163310	SPROCKET, STAR CLAMP END	1
4	163311	SPROCKET, STAR COLLAR END	1
5	2K656	CLAMP, PAINTED	1
6	1-654-010055-03	SCREW, HEX CAP 1/2-13 X 1-1/2, GR5, ZP	2
7	1-512-010005-09	NUT, HEX SLFLKG 1/2-13, GRB, ZP	2
8	3P270	ROLL PIN, 3/8 X 2 1/4", ZP	1
9	163313	SPROCKET, STAR PAINTED	4

ILLUSTRATED PARTS LIST

Scraper (After Serial #203912)

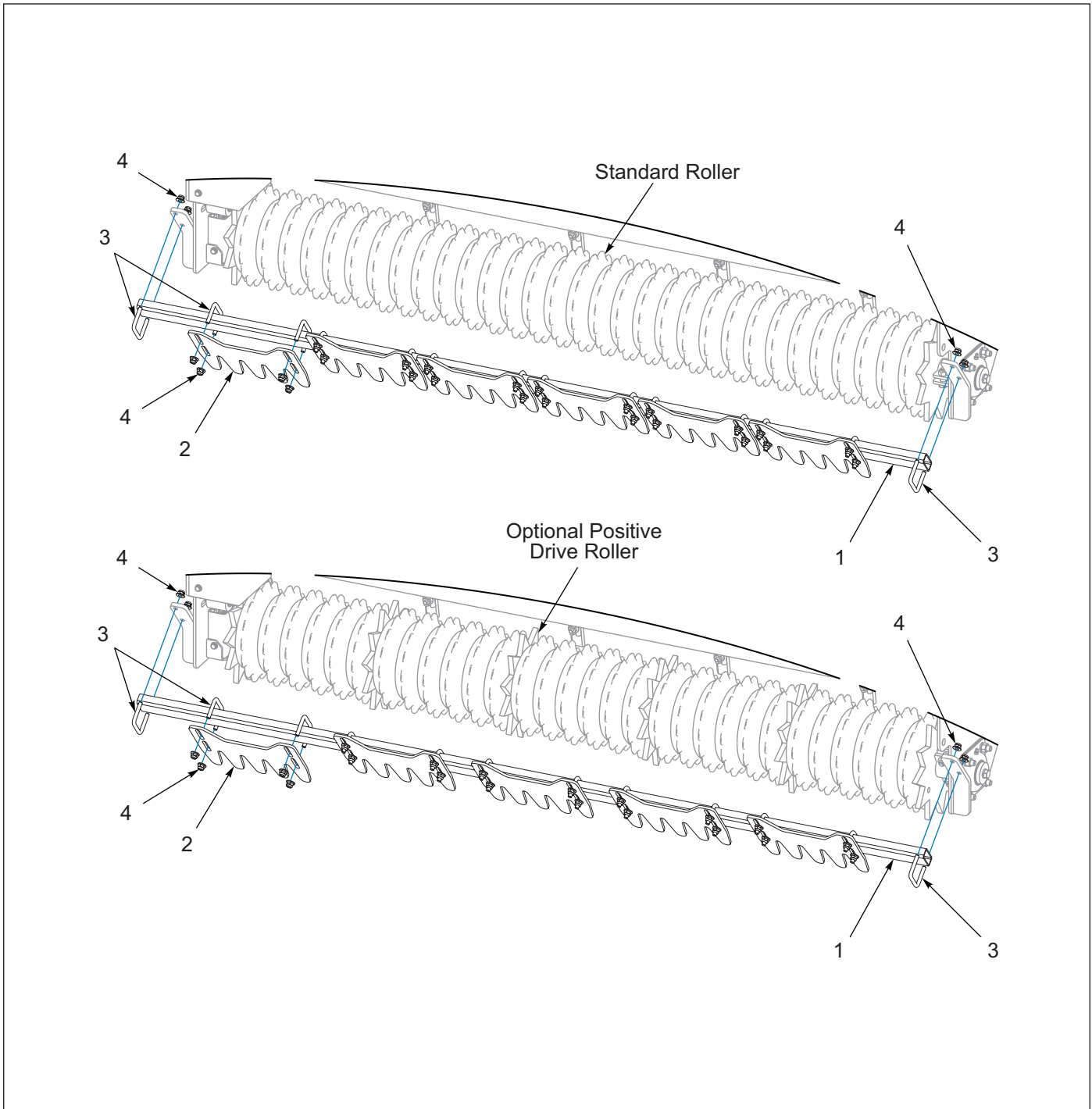


Figure 1-5: Scraper (After Serial #203912)

Scraper (After Serial #203912)

ITEM	PART NUMBER	DESCRIPTION	QTY
1	163319	TUBE 2X1X11GAX81	1
2	163320	SCRAPER 5 BLADE	6
3	3P089	U-BOLT, 3/8-16X2-3/8X2 ZP	14
4	2P252	NUT, FLANGE NY-LOK 3/8-16	28

Frame and Scraper (Before Serial #203912)

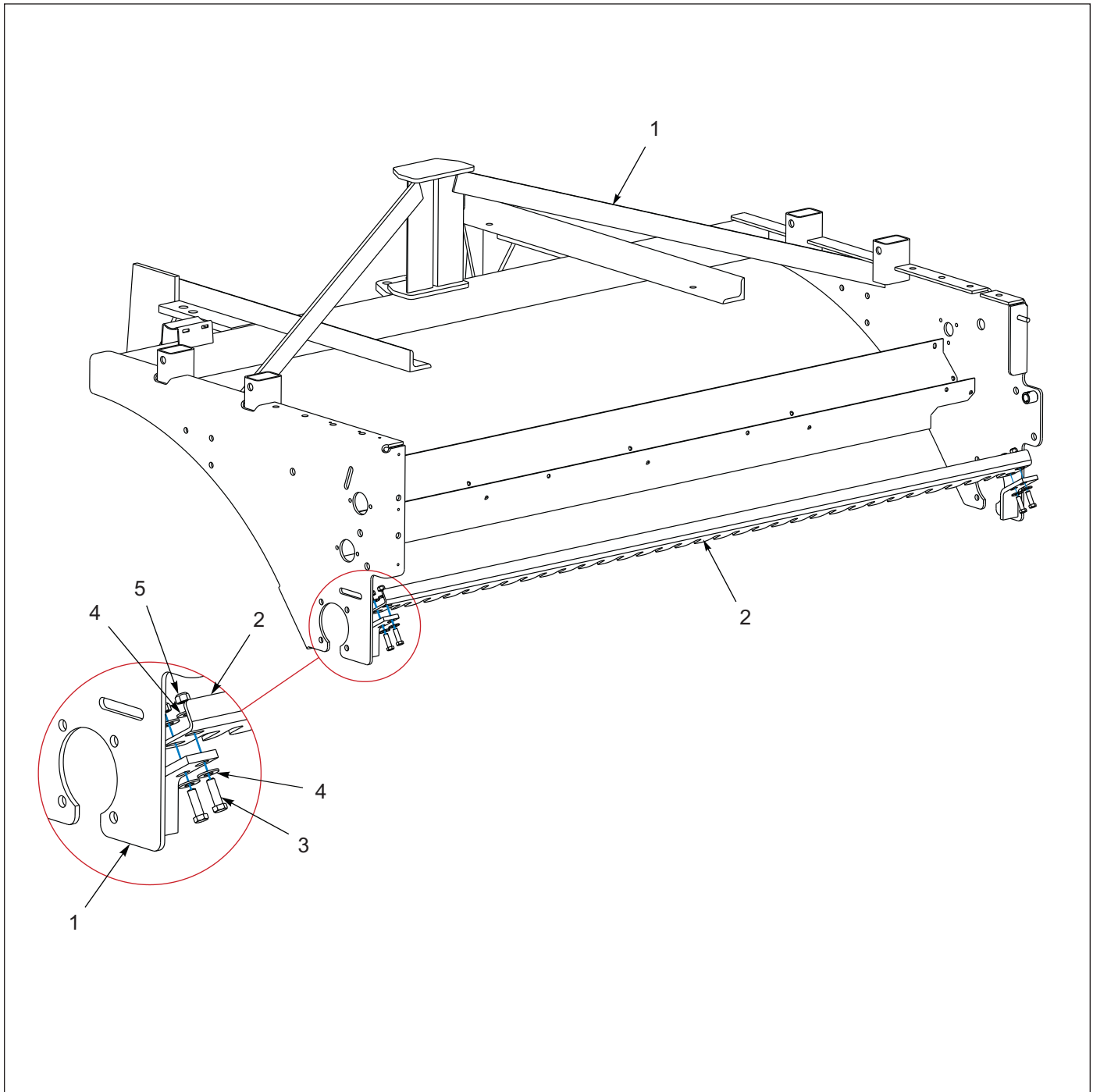


Figure 1-6: Previous Frame and Scraper

Previous Frame and Scraper (Before Serial #203912)

ITEM	PART NUMBER	DESCRIPTION	QTY
1	2P001	FRAME, FPS6	1
2	2P063	SCRAPER, 6' FPS WLD	1
3	1-654-010051-06	SCREW,HEX CAP 3/8-16UNCX1-1/4	4
4	1-861-010032-11	WASHER, FLAT 3/8 W ZP/CD	8
5	1-512-010005-05	NUT, HEX, SLFLKG GRB 3/8-16	4

3-PT Hitch

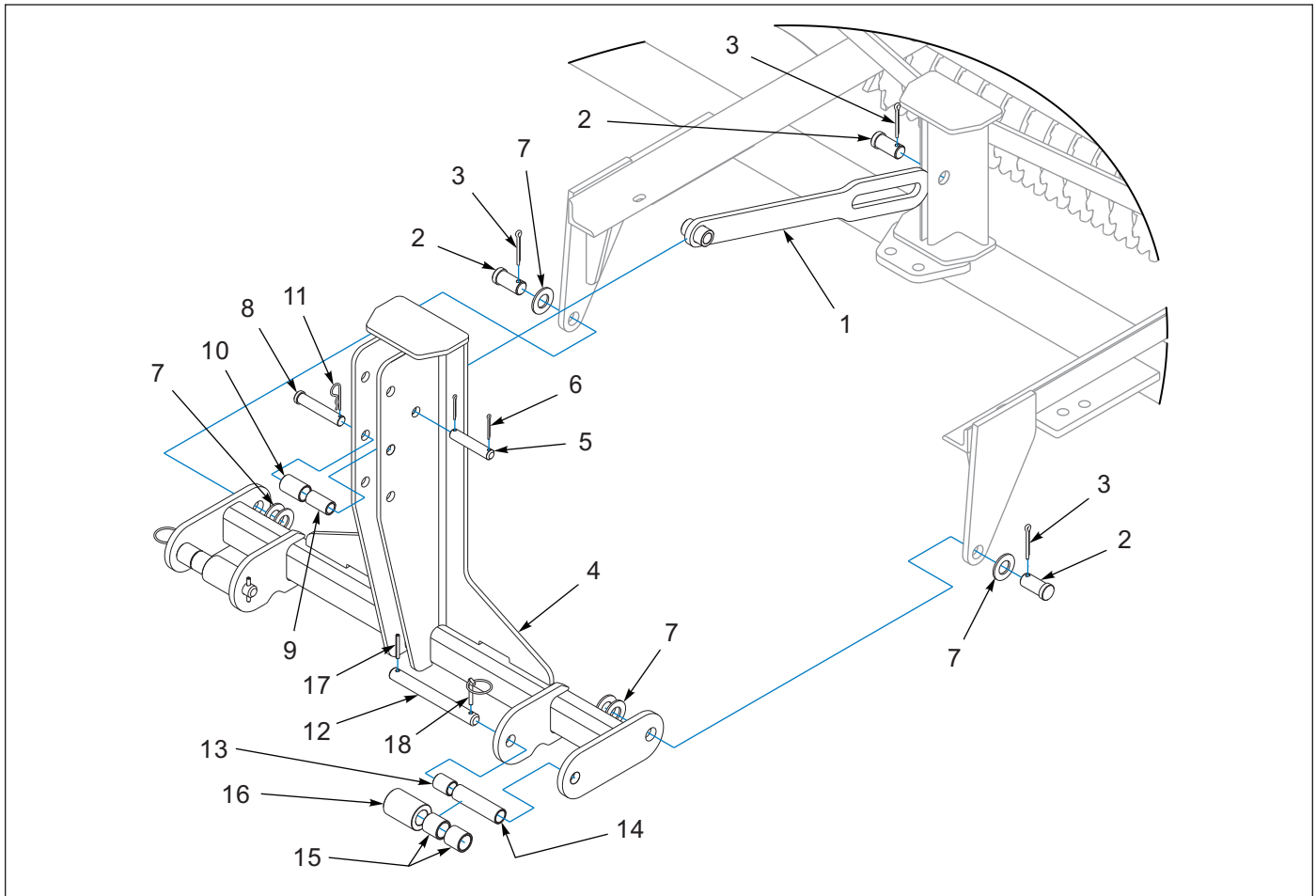


Figure 1-7: 3-PT Hitch

3-PT Hitch

ITEM	PART NUMBER	DESCRIPTION	QTY
1	2P065	LINK WLD	1
2	4D983	CLEVIS PIN (1 X 2)	3
3	1-557-010362-63	PIN,COTTER 1/4X2 ZP	3
4	2P061	HITCH, 3 POINT WLDMT	1
5	9J848	PIN (3/4 X 3-7/8)	1
6	110-0354	5/32X1-1/2 COTTER PIN ZP	2
7	1-861-010032-24	WASHER FL 1IN NARROW ZP	6
8	5C077	CLEVIS PIN (3/4 X 4)	1
9	7K229	SLEEVE - 1 OD X 2 LG	1
10	5D157	SLEEVE (1.03 X 1.25 X 1.94)	1
11	6J448	HAIRPIN COTTER 1/8	1
12	7K230	PIN (7/8 X 8-1/4)	2
13	7K227	SLEEVE - 1 1/8 OD X 1 13/32 LG	2
14	7K228	SLEEVE - 1 1/8 OD X 4 9/32 LG	2
15	7K226	SLEEVE-1 7/16 OD X 1 13/32 LG	4
16	7K225	SLEEVE - 2 OD X 2 13/16 LG	2
17	1-647-010004221	PIN,SPRING 1/4X2 SLOTTED	2
18	1-557-010327	PIN LYNCH 1/4X1-1/4	2

Drawbar

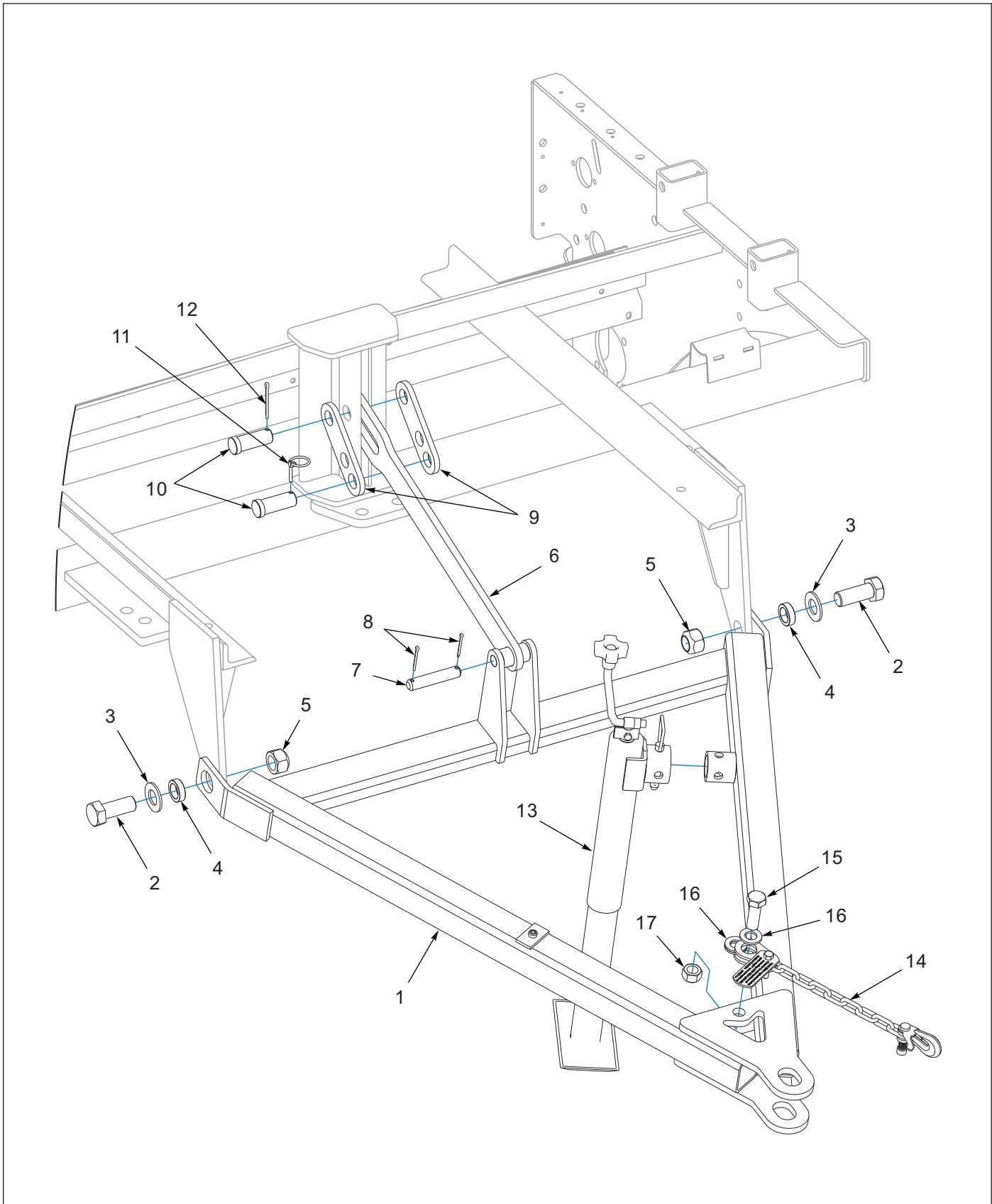


Figure 1-8: Drawbar

Drawbar

ITEM	PART NUMBER	DESCRIPTION	QTY
1	2P973	DRAWBAR, FPS6	1
2	151528	SCREW, HX CP 1-8UNCX2-1/2 GR5	2
3	1-861-010032-24	WASHER FL 1IN NARROW ZP	2
4	2P461	TUBE, RD 1.031 X 1.5 X 0.438	2
5	1-512-010005-19	NUT 1-8 HEX SLF-LOCKING GRB	2
6	2P987	LINK, DRAWBAR WLD	1
7	9J848	PIN (3/4 X 3-7/8)	1
8	110-0354	5/32X1-1/2 COTTER PIN ZP	2
9	2P989	STRAP	2
10	8D099	CLEVIS PIN (1 X 2-1/2)	2
11	5D129	KLIK PIN	1
12	110-4224	PIN,COTTER-3/16 X 2IN LG	1
13	3J880	DRAWBAR JACK	1
14	141433	SAFETY CHAIN 11,000LB	1
15	1-654-010061-06	SCREW,HXCP,3/4-10UNCX2-1/4GR5	1
16	1-861-010032-20	WASHER, FLAT,3/4 N ZP/CD	3
17	1-512-010005-15	NUT,HEX,SLFLKG GRB 3/4-10	1

Rockshaft with Hydraulic Cylinder

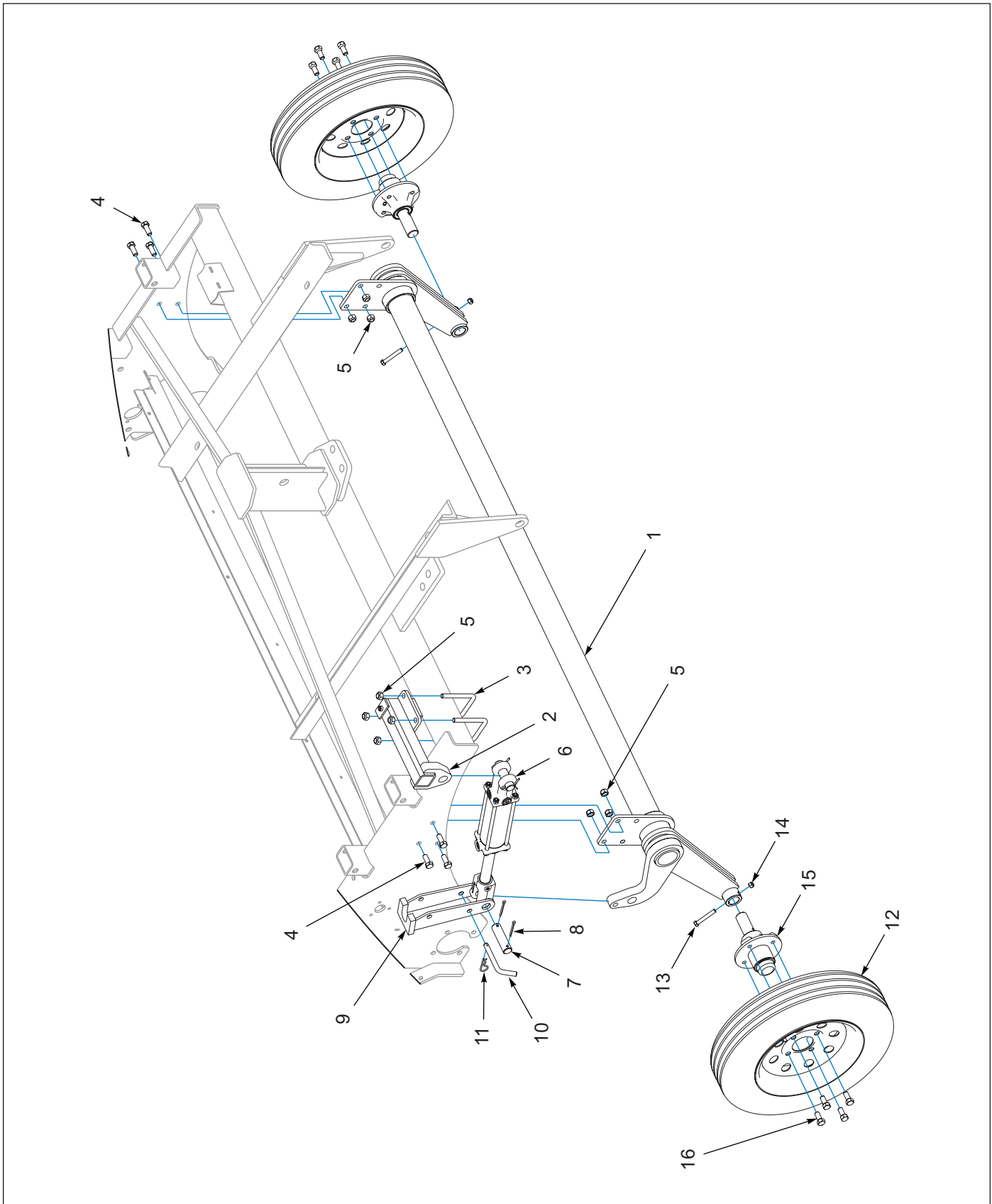


Figure 1-9: Rockshaft with Hydraulic Cylinder

Rockshaft with Hydraulic Cylinder

ITEM	PART NUMBER	DESCRIPTION	QTY
1	2P965	ROCKSHAFT, FPS6	1
2	2P982	MOUNT, CYL WLD	1
3	2P986	U-BLT,1/2-13X3 1/2X4 1/4 ZP	2
4	1-654-010055-02	SCREW 1/2-13UNCX1-1/4 CP GR5	6
5	1-512-010005-09	NUT,HEX,SLFLKG, 1/2-13 GRB	10
6	9J440	HYD CYLINDER - 2 1/2 X 6	1
7	5J650	PIN,CLEVIS 1.0X3.625	1
8	6C468	PIN,COTTER-3/16 X 2IN LG	2
9	2P990	CYL TRANSPORT LOCK	1
10	3C335	CLEVIS PIN, BENT	1
11	6J448	HAIRPIN COTTER 1/8	1
12	2P962	MOUNTED WHL & TIRE ASM	2
13	1-654-010051-11	SCREW HX CP 3/8-16X2-1/2 G5ZP	2
14	1-512-010005-05	NUT, HEX, SLFLKG GRB 3/8-16	2
15	2P960	HUB AND SPINDLE ASSEMBLY (INCL. ITEM 16) (SEE PAGE 1-17)	2
16	5C100	WHEEL BOLT 1/2-20X1 GR5 ZP	4

Rockshaft with Ratchet

ITEM	PART NUMBER	DESCRIPTION	QTY
1	2P965	ROCKSHAFT, FPS6	1
2	2P982	MOUNT, CYL WLD	1
3	2P986	U-BLT,1/2-13X3 1/2X4 1/4 ZP	2
4	1-654-010055-02	CREW 1/2-13UNCX1-1/4 CP GR5	6
5	1-512-010005-09	NUT,HEX,SLFLKG, 1/2-13 GRB	10
6	1K618	RATCHET JACK	1
7	2P962	MOUNTED WHL & TIRE ASM	2
8	1-654-010051-11	SCREW HX CP 3/8-16X2-1/2 G5ZP	2
9	1-512-010005-05	NUT, HEX, SLFLKG GRB 3/8-16	2
10	2P960	HUB AND SPINDLE ASSEMBLY (INCL. ITEM 11) (SEE PAGE 1-17)	2
11	5C100	WHEEL BOLT 1/2-20X1 GR5 ZP	4

Hub and Spindle Assembly

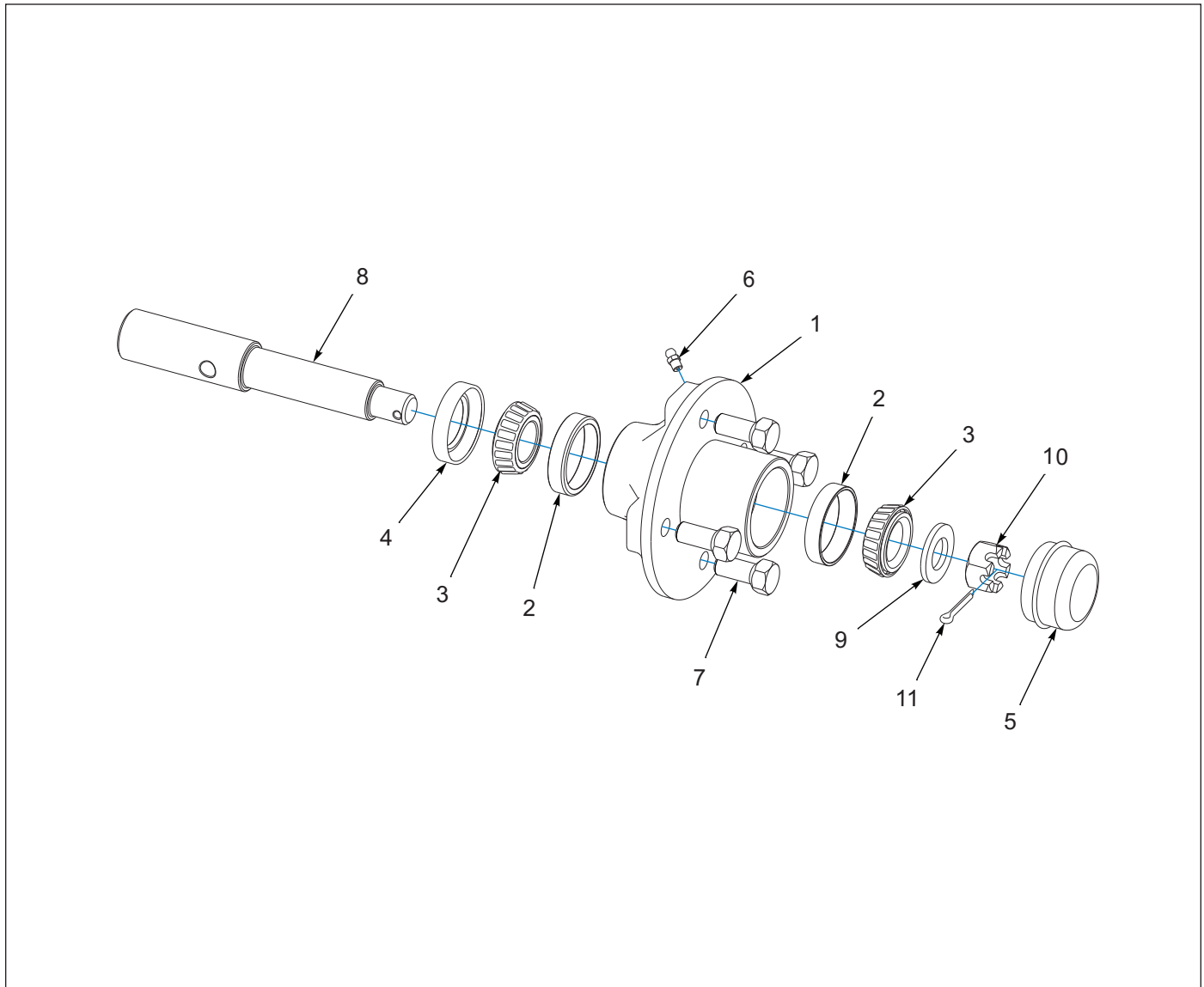


Figure 1-11: Hub and Spindle Assembly

Hub and Spindle Assembly

ITEM	PART NUMBER	DESCRIPTION	QTY
	2P960	HUB AND SPINDLE ASSEMBLY	1
1	2P957	HUB ASM, 4 BOLT (INCLUDES ITEMS 2-7)	1
2	9C226	BEARING CUP, TIMKEN (L44610)	2
3	125613	INNER CONE L44643(P752316)	2
4	125611	GREASE SEAL CR12411(P602123)	1
5	7K545	UB CAP (OBS)	1
6	2P959	FIT, GREASE 6MM X 1.0 OBS	1
7	5C100	WHEEL BOLT 1/2-20X1 GR5 ZP	4
8	2P961	SPINDLE, 1 1/4 X 7 3/4	1
9	1-861-010032-20	WASHER, FLAT, 3/4 N ZP/CD	1
10	3/4-16HSN	HEX SLOTTED NUT	1
11	110-0344	5/32X1 COTTER PIN	1

Hydraulic Layout

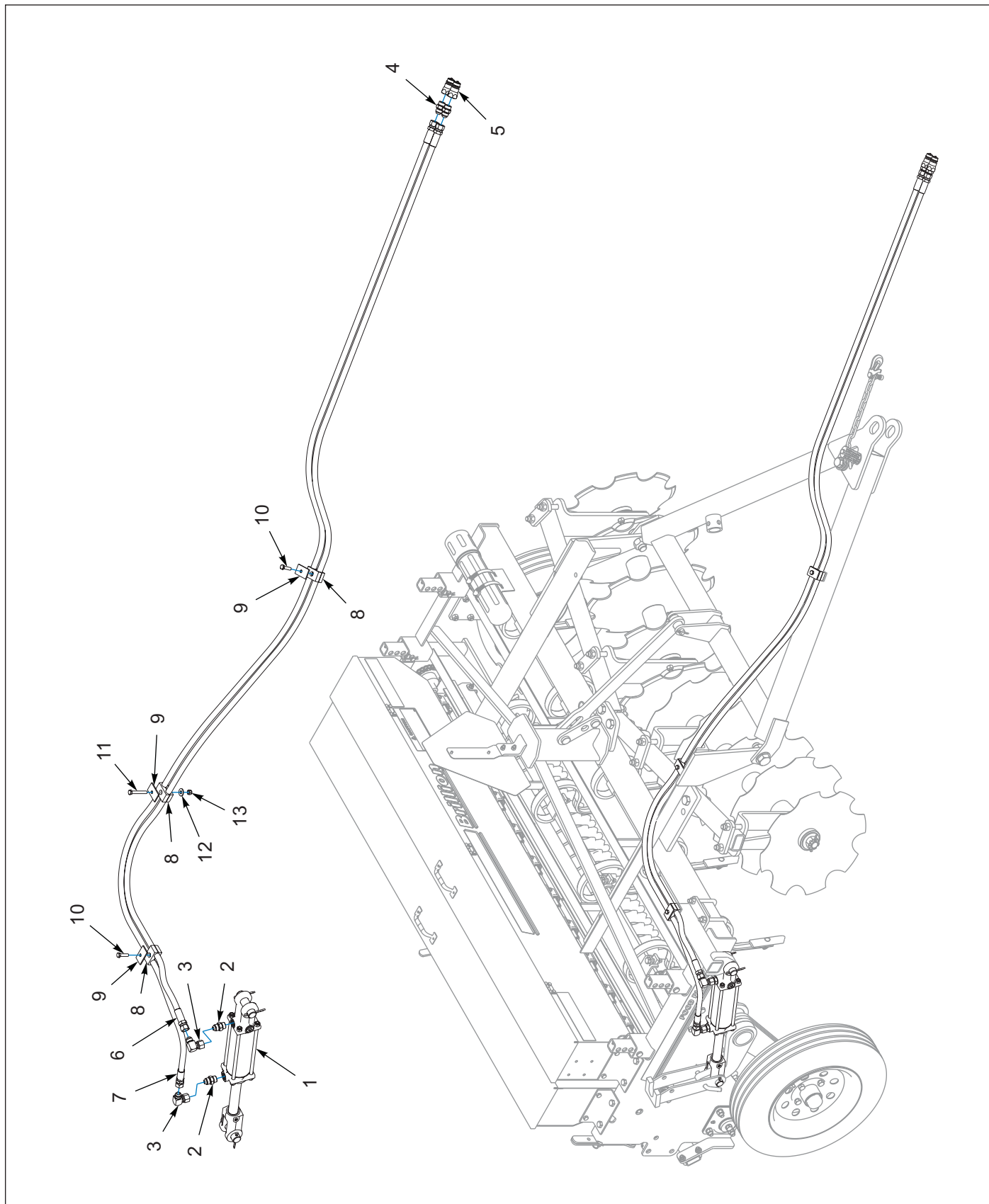


Figure 1-12: Hydraulic Layout

Hydraulic Layout

ITEM	PART NUMBER	DESCRIPTION	QTY
1	9J440	HYD CYLINDER - 2 1/2 X 6 (SEE PAGE 1-41)	1
2	4K607	RESTRICTOR 3/4-16 (08MJ X 08MOR X .078)	2
3	2071-8-8S	ADAPTER90 #8 FLR SWIVEL #8JIC (ELBOW, 08MJ X 08FJS X 90°)	2
4	202702-8-8S	ADAPTOR #8 O-RING TO #8 TUBE (08MJ X 08MOR)	2
5	141828	COUPLER,MALE 3/4-16 O-RING	2
6	137599	HOSE ASSY 3/8X126.25 #8JIC SWV	1
7	141881	HOSE ASSY 3/8X136 #8 JIC SWV	1
8	1P937	TWIN CLAMP PAIR,. 67" DIA	3
9	1P938	TWIN TOP PLATE	3
10	1-654-010049-06	SCREW,H/CAP,5/16-18UNCX1-1/4	2
11	108628	SCREW HX CP 5/16-18UNCX2-1/4	1
12	1-861-010032-09	WASHER, FLAT 5/16 W ZP/CD	1
13	104032	NUT,HX SLF-LKG W/MYL 5/16-18	1

ILLUSTRATED PARTS LIST

Disc Gangs

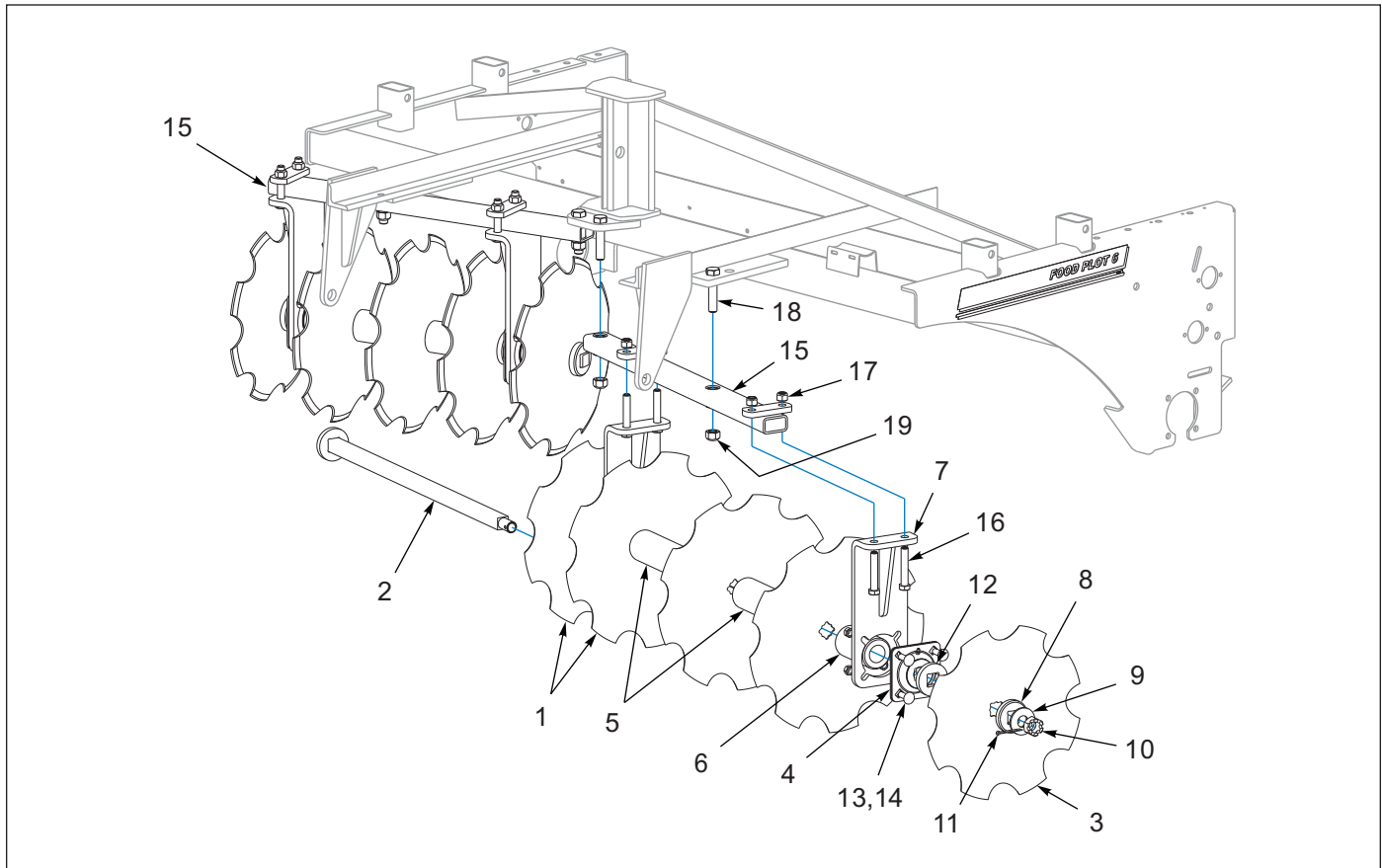


Figure 1-13: Disc Gangs

Disc Gangs

ITEM	PART NUMBER	DESCRIPTION	QTY
	2P025	GANG ASM, FPS6 (INCLUDES ITEMS 1-17)	2
1	1P873	DISC, NOTCHED 18" O.D.	4
2	2P018	SHAFT WLD, 1 1/8 SQ	1
3	2P044	NOTCHED DISC, 16" PLOW	1
4	1P872	BRG ASM, 1 1/8 SQUARE	2
5	2P020	SPOOL, 1 5/8 BORE	2
6	2P007	SPOOL HALF	2
7	2P027	HANGER, BRG WLD	2
8	2P026	END WASHER PAINTED	1
9	1-861-010032-25	WASHER FL 1IN WIDE ZP	3
10	6C465	SLOTTED NUT 1-8 ZP	1
11	6C468	PIN,COTTER-3/16 X 2IN LG	1
12	2P016	WASHER, END, MACHINED	2
13	1-654-010070-03	SCREW RDHD SQNK1/2-13X1-1/2	8
14	1-512-010005-09	NUT,HEX,SLFLKG, 1/2-13 GRB	8
15	2P030	FRAME, GANG	1
16	1-654-010059-11	SCREW,HX CP 5/8-11UNCX3.5GR5	4
17	1-512-010005-13	NUT,HEX SLFLKG GRB 5/8-11	4
18	141776	SCREWHXCP 3/4-10UNCX3-1/2GR5B	4
19	1-512-010005-15	NUT,HEX,SLFLKG GRB 3/4-10	4

S-Tine

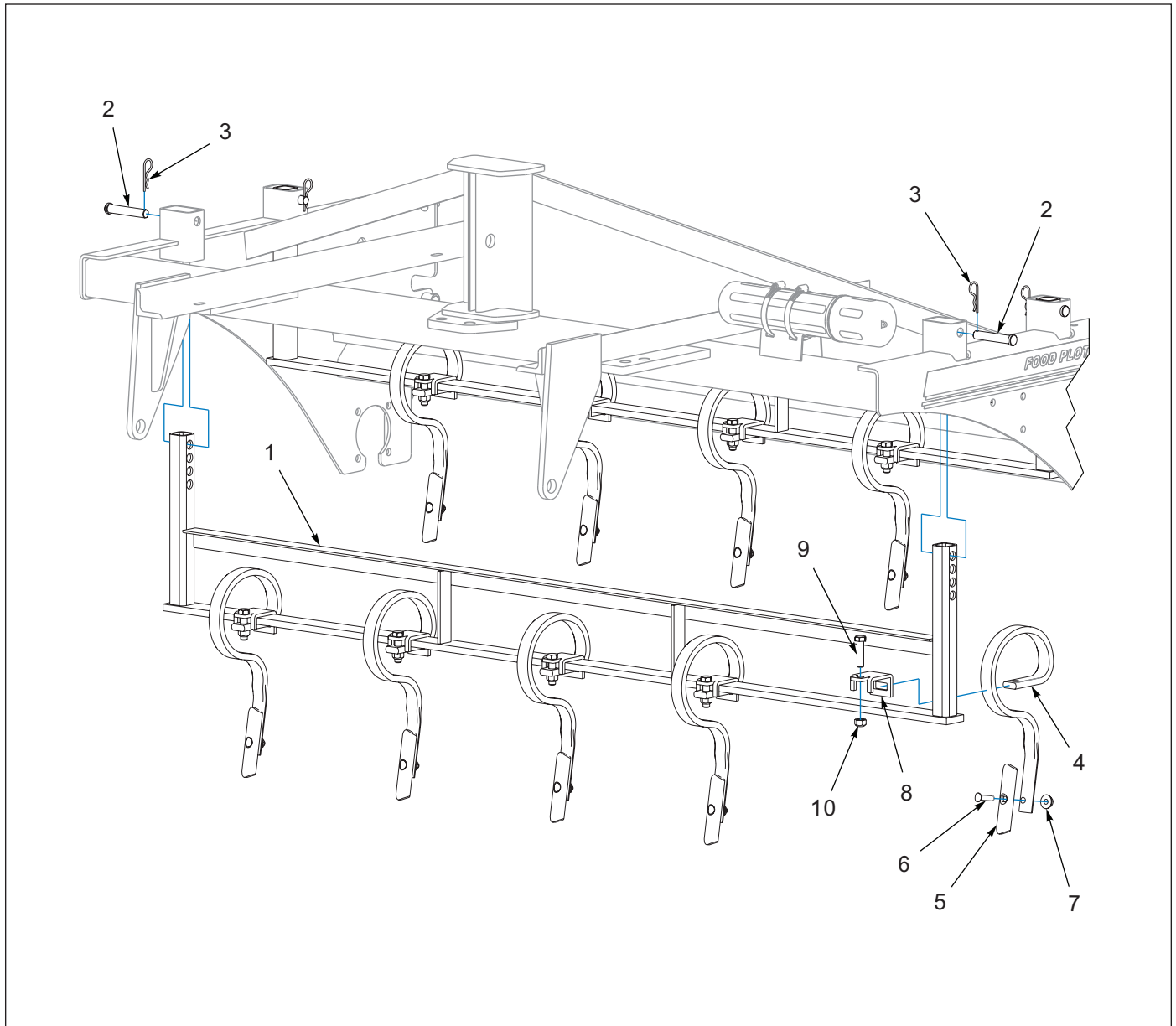


Figure 1-14: S-Tine

S-Tine

ITEM	PART NUMBER	DESCRIPTION	QTY
1	2P055	FRAME, S-TINE	2
2	2P075	CLEVIS PIN, 0.625 X 3.5	4
3	6J448	HAIRPIN COTTER 1/8	4
4	1P870	S-TINE, 10" W/POINT ASSY (INCLUDES ITEMS 5-7)	9
5	2P015	POINT, REVERSIBLE	9
6	7D728	CULTIVATOR BOLT 3/8-16 X 1-3/4	9
7	5J616	FLANGE LOCK NUT 3/8-16	9
8	1P871	CLAMP, S-TINE	9
9	1-654-010055-05	SCREW,HEX CAP,1/2-13UNCX2 GR5	9
10	1-512-010005-09	NUT,HEX,SLFLKG, 1/2-13 GRB	9

Meter Seed Box

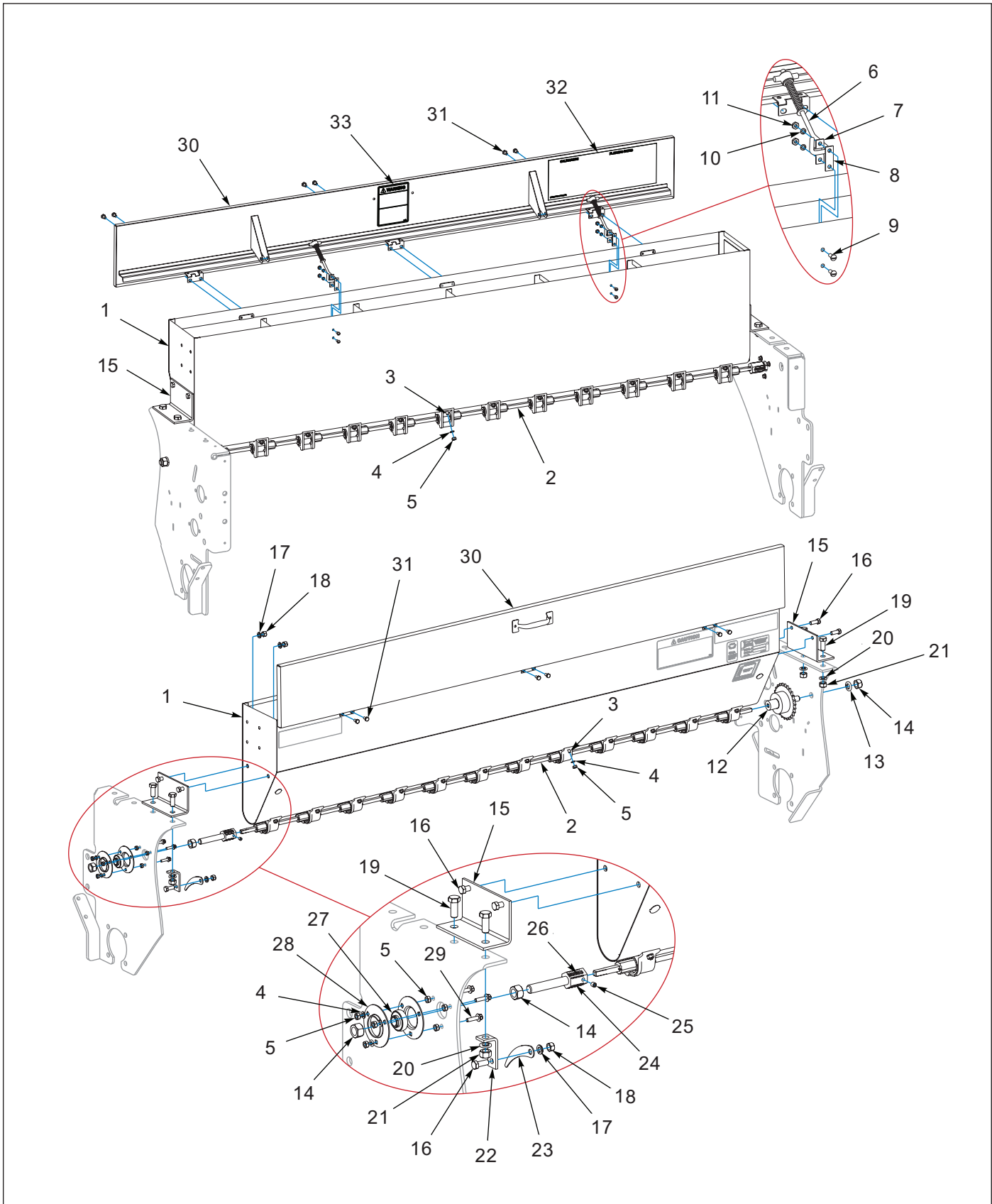


Figure 1-15: Meter Seed Box

Meter Seed Box

ITEM	PART NUMBER	DESCRIPTION	QTY
	2P032	FPS6 SEEDBOX ASM, CUPS (INCL. ITEMS 1-11)	1
1	2K451	SSP6/SS12 SEEDBOX-NO COVER	1
2	2P031	FPS6 SEEDMETER ASM (SEE PAGE 1-24)	1
3	108213	RHMS 1/4-20 x 5/8 ZP	24
4	1-861-010034-09	WASHER, LKG HLCL SPR, 1/4	27
5	1-512-010007-05	NUT, HEX 1/4-20 GR2 ZP	30
6	1C199	PIVOT LOCK ASSY	2
7	7D938	COVER LOCK CLIP	2
8	7D937	WEAR STRIP	2
9	1C213	STOVE BOLT #10-24X1/2 RD HD ZP	4
10	1-861-010034-07	WASHER,LKG,HLCL SPR, NO 10	4
11	1-512-010007-03	NUT, HEX 10-24 GR2 ZP	4
12	7K429	26 TOOTH SPROCKET ASSY (SEE PAGE 1-25)	1
13	1-861-010034-15	WASHER,LKG,HLCL SPR,5/8	1
14	1-512-010007-11	NUT, HEX 5/8-11 GR2 ZP	3
15	7K419	MOUNTING BRACKET	2
16	1-654-010051-05	SCREW,HEX CAP 3/8-16UNCX1 GR5	5
17	1-861-010034-11	WASHER, LKG HLCL SPR, 3/8	5
18	1-512-010007-07	NUT, HEX 3/8-16 GR2 ZP	5
19	1-654-010055-02	SCREW 1/2-13UNCX1-1/4 CP GR5	4
20	1-861-010034-13	WASHER, LKG HLCL SPR, 1/2	4
21	1-512-010007-09	NUT, HEX 1/2-13 GR2 ZP	4
22	7K442	BRACKET	1
23	6K442	POINTER	1
24	6K391	SEED SHAFT EXTENSION	1
25	107-0975	SCREW SET LOCK 5/16-18X3/8LG	1
26	6K008	SEEDER SHAFT DECAL	3
27	5K989	BEARING (LESS COLLAR)	1
28	9D816	FLANGETTE - 3 BOLT (HALF)	2
29	7K237	FLANGED CAPSCREW	3
30	2K453	COVER, 6 FT	1
31	104877	SCREW,HX CP,1/4-20UNCX1/2 GR5	6
32	2P104	DECAL, SEED RATE CHART-FPS6	1
33	2K123	DECAL - 'WARNING'	1

Seed Shaft Assembly

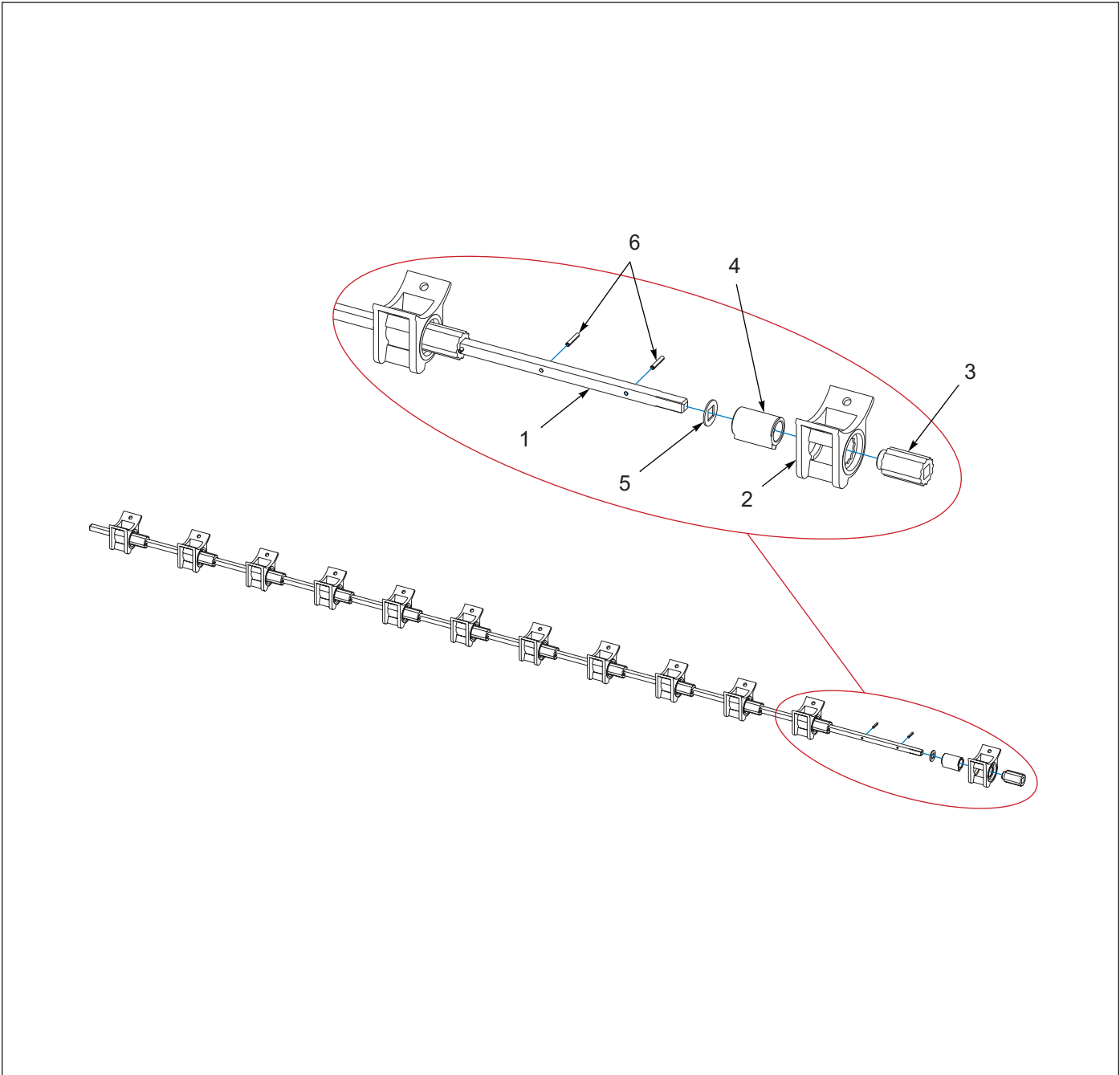


Figure 1-16: Seed Shaft Assembly

Seed Shaft Assembly

ITEM	PART NUMBER	DESCRIPTION	QTY
	2P031	FPS6 SEEDMETER ASM	1
1	7K413	SSP6 SEEDMETER SHAFT	1
2	155872	METER, PLASTIC CUP	12
3	155873	METER, FEED ROLL	12
4	155871	METER, FEED CUT OFF	12
5	1C245	CUTOFF WASHER	12
6	1C272	ROLL PIN 1/8X3/4	24

Sprocket Assembly, 26T

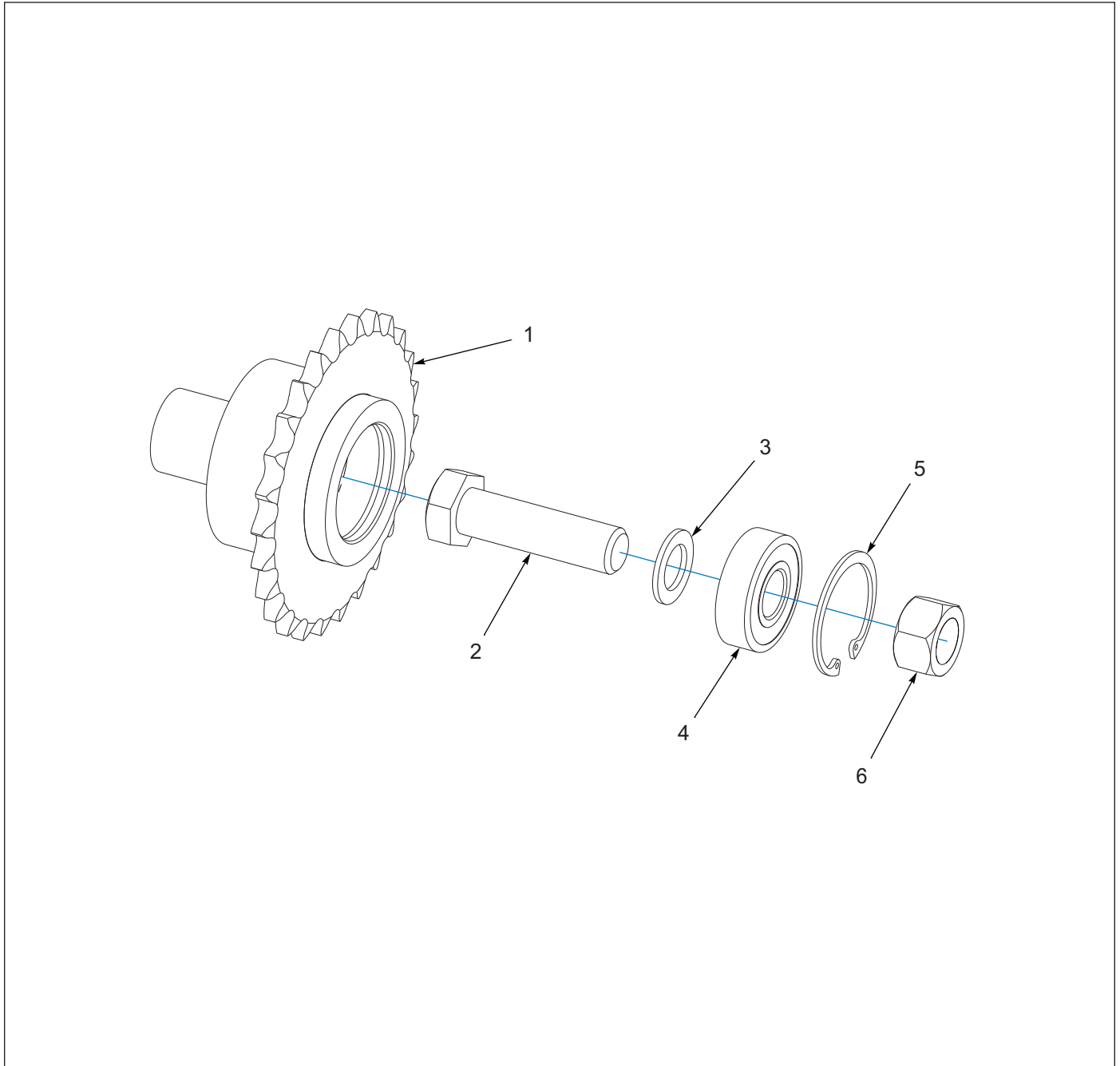


Figure 1-17: Sprocket Assembly, 26T

Sprocket Assembly, 26T

ITEM	PART NUMBER	DESCRIPTION	QTY
	7K429	26 TOOTH SPROCKET ASSY	1
1	7K423	26 TOOTH SPROCKET & HUB	1
2	1-654-010059-06	SCREW,HEX CAP 5/8-11X2-1/4 G5	1
3	8C892	MACHINERY BUSHING 1" ODX5/8"ID	1
4	7K114	BALL BEARING - 5/8" BORE	1
5	7K439	RETAINING RING	1
6	1-512-010007-11	NUT, HEX 5/8-11 GR2 ZP	1

Agitator Seed Box Assembly

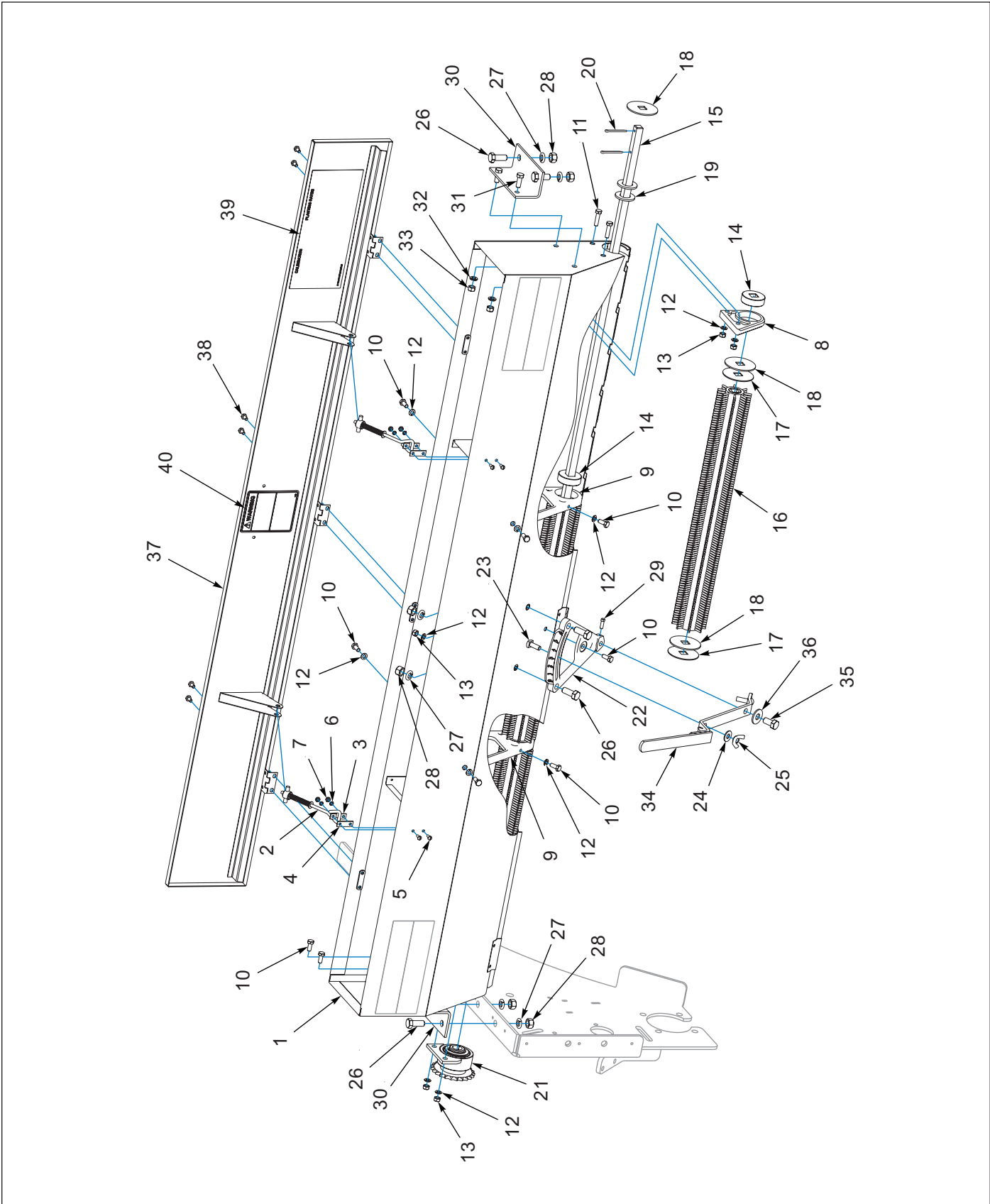


Figure 1-18: Agitator Seed Box Assembly

Agitator Seed Box

ITEM	PART NUMBER	DESCRIPTION	QTY
	2P177	SEEDBOX ASSEMBLY-AGITATOR (INCL. ITEMS 1-29)	1
1	2K452	AGITATOR SEEDBOX 6' -NO COVER	1
2	1C199	PIVOT LOCK ASSY	2
3	7D938	COVER LOCK CLIP	2
4	7D937	WEAR STRIP	2
5	1C213	STOVE BOLT #10-24X1/2 RD HD ZP	4
6	1-861-010034-07	WASHER,LKG,HLCL SPR, NO 10	4
7	1-512-010007-03	NUT, HEX 10-24 GR2 ZP	4
8	9D793	BOX END BEARING	1
9	1C339	AGITATOR BEARING	2
10	1-654-010049-03	SCREW HX CP 5/16-18UNCX3/4GR5	11
11	1-654-010049-06	SCREW,H/CAP,5/16-18UNCX1-1/4	2
12	1-861-010034-10	WASHER,LKG 5/16	13
13	1-512-010007-06	NUT, HEX 5/16-18 GR2 ZP	5
14	2C808	BUSHING	3
15	7K407	SSP6 AGITATOR SHAFT	1
16	2P173	BRUSH,8 ROW,22.94 LG (1.63 DIA CORE)	3
17	8J564	WASHER,SQ BORE 14 GA	2
18	2C809	WASHER,SQ BORE 12GA	7
19	1-861-010032-22	WASHER,FL 7/8 ZP/CD	2
20	110-0354	5/32X1-1/2 COTTER PIN ZP	2
21	7K677	AGITATOR SPROCKET ASSY (SEE PAGE 1-29)	1
22	2C662	RH SHIFTER PLATE	1
23	1C606	MACH BOLT 3/8-16X1 SQHD PLT	1
24	1-861-010032-11	WASHER, FLAT 3/8 W ZP/CD	1
25	1C217	WING NUT 3/8-16NC ZP	1
26	1-654-010055-02	SCREW 1/2-13UNCX1-1/4 CP GR5	6
27	1-861-010034-13	WASHER, LKG HLCL SPR, 1/2	6
28	1-512-010007-09	NUT, HEX 1/2-13 GR2 ZP	6
29	1-654-010077-2	SCREW, SET,1/4X3/4,SQHD CP PT	1
30	2P085	MOUNTING BRACKET	2
31	1-654-010051-05	SCREW,HEX CAP 3/8-16UNCX1 GR5	4
32	1-861-010034-11	WASHER, LKG HLCL SPR, 3/8	4
33	1-512-010007-07	NUT, HEX 3/8-16 GR2 ZP	4
34	9J422	SHIFTER HANDLE	1
35	1-654-010055-01	SCR,HX CP 1/2-13UNCX1 GR5	1
36	1-861-010032-15	WASHER, FLAT 1/2 W ZP/CD	1
37	2K453	COVER, 6 FT	1
38	104877	SCREW,HX CP,1/4-20UNCX1/2 GR5	6
39	2P178	DECAL, SEED RATE CHART (FPS6)	1
40	2K123	DECAL - 'WARNING'	1

Agitator Sprocket Assembly, 23T

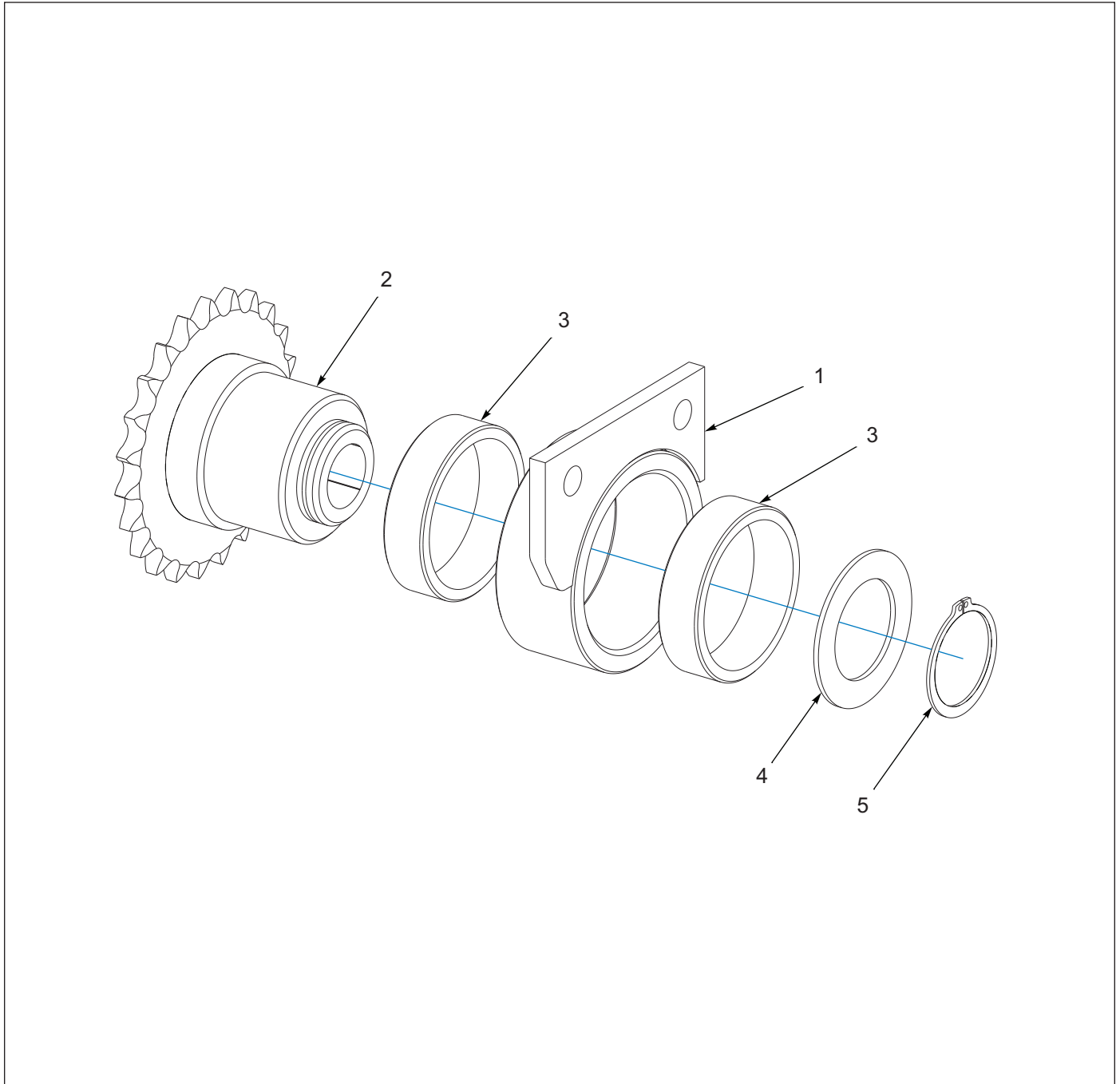


Figure 1-19: Agitator Sprocket Assembly, 23T

Agitator Sprocket Assembly, 23T

ITEM	PART NUMBER	DESCRIPTION	QTY
	7K677	AGITATOR SPROCKET ASSY	1
1	7K408	BEARING CARRIER	1
2	7K409	23 TOOTH SPROCKET/HUB WLDMT	1
3	2C582	BUSHING	2
4	7C086	MACHINERY BUSHING - 1 3/8	1
5	7K017	RETAINING RING	1

Meter Seed Box Transmission

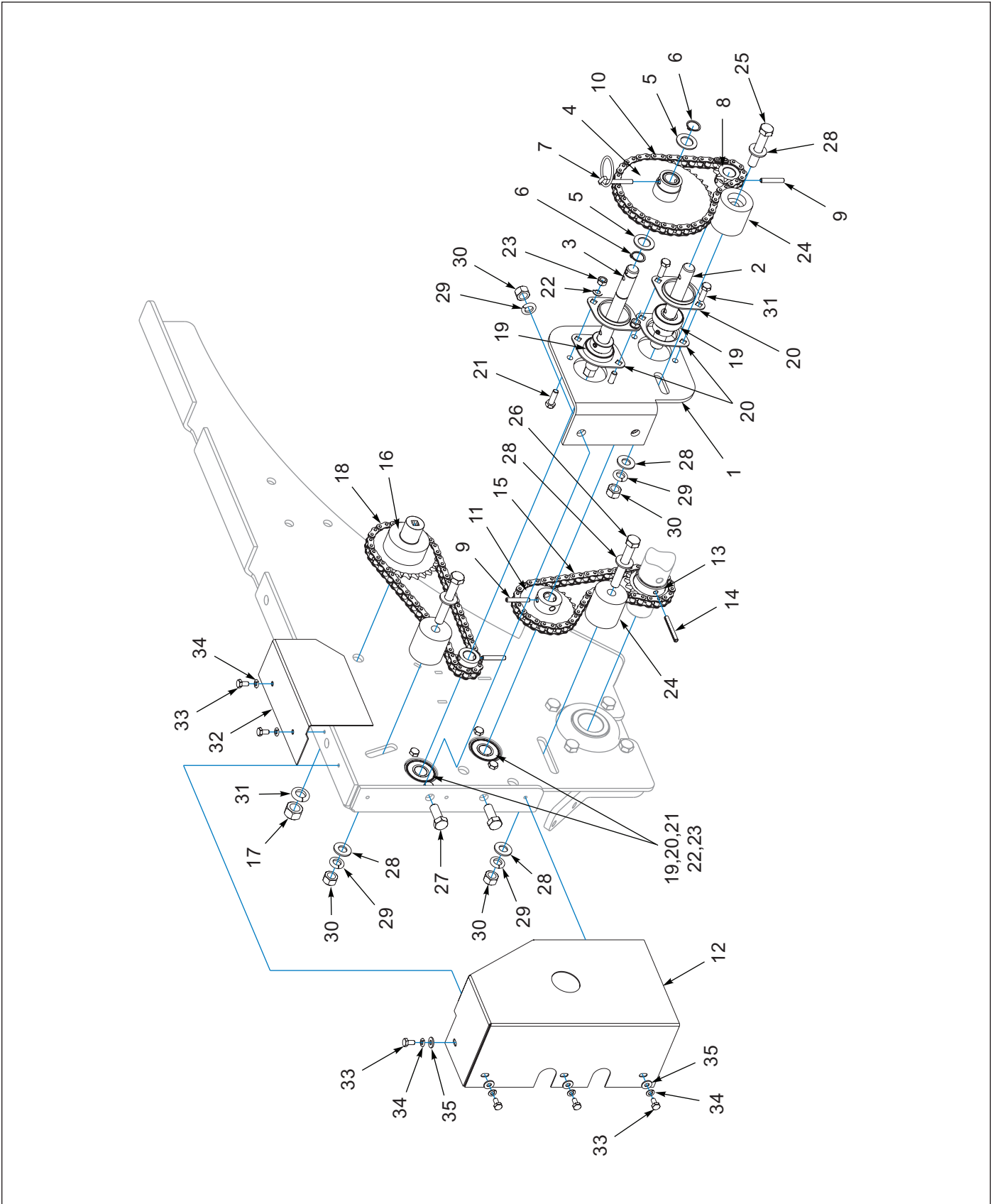


Figure 1-20: Meter Seed Box Transmission

Meter Seed Box Transmission

ITEM	PART NUMBER	DESCRIPTION	QTY
1	2P082	MOUNT, TRANSMISSION	1
2	2P021	SHAFT, TRANS INPUT	1
3	2P076	SHAFT, TRANS OUTPUT	1
4	2P023	SPROCKET, 37 TOOTH (W/BUSHING)	1
5	8C381	MACHINERY BUSHING (0.75 X 1.25 X 14GA)	2
6	7K016	RETAINING RING (TRUARC #5100-75)	2
7	1-557-010327	PIN LYNCH 1/4X1-1/4	1
8	2P019	SPROCKET 10 TOOTH (#40B10 X 3/4 BORE)	2
9	1-647-010004217	SPRING PIN, SLOTTED 1/4X1-1/2	3
10	2P088	ROLLER CHAIN #40 X 46 PITCHES	1
11	9D854	SPROCKET-23 TOOTH (#40B23 X 3/4 BORE)	1
12	2P083	COVER, TRANSMISSION	1
13	2P012	SPROCKET, 17 TOOTH (ON ROLLER)	1
14	1-647-010004221	PIN,SPRING 1/4X2 SLOTTED	1
15	2P067	ROLLER CHAIN, #40 X 52 PITCHES	1
16	7K429	26 TOOTH SPROCKET ASSY (SEE PAGE 1-25)	1
17	1-512-010007-11	NUT, HEX 5/8-11 GR2 ZP	1
18	2P089	ROLLER CHAIN #40 X 56 PITCHES	1
19	1D598	BEARING & COLLAR 3/4"	4
20	2K503	FLANGETTE - 2 BOLT (HALF)	8
21	1-654-010049-05	SCREW HX CP 5/16-18UNCX1 GR5	8
22	1-861-010034-10	WASHER,LKG 5/16	8
23	1-512-010007-06	NUT, HEX 5/16-18 GR2 ZP	8
24	2K957	IDLER (2 X 2)	3
25	101510	SCREW HXCP1/2-13UNCX2-3/4 G5	1
26	1-654-010055-11	SCREW,HX CP 1/2-13UNCX3-1/2	2
27	1-654-010055-02	SCREW 1/2-13UNCX1-1/4 CP GR5	2
28	1-861-010032-14	WASHER, FLAT 1/2" N ZP/CD	6
29	1-861-010034-13	WASHER, LKG HLCL SPR, 1/2	5
30	1-512-010007-09	NUT, HEX 1/2-13 GR2 ZP	5
31	1-861-010034-15	WASHER,LKG,HLCL SPR,5/8	1
32	2P084	COVER, CHAIN	1
33	104877	SCREW,HX CP,1/4-20UNCX1/2 GR5	6
34	1-861-010034-09	WASHER, LKG HLCL SPR, 1/4	6
35	1-861-010032-06	WASHER, FLAT 1/4 N ZP/CD	4

Agitator Seed Box Transmission

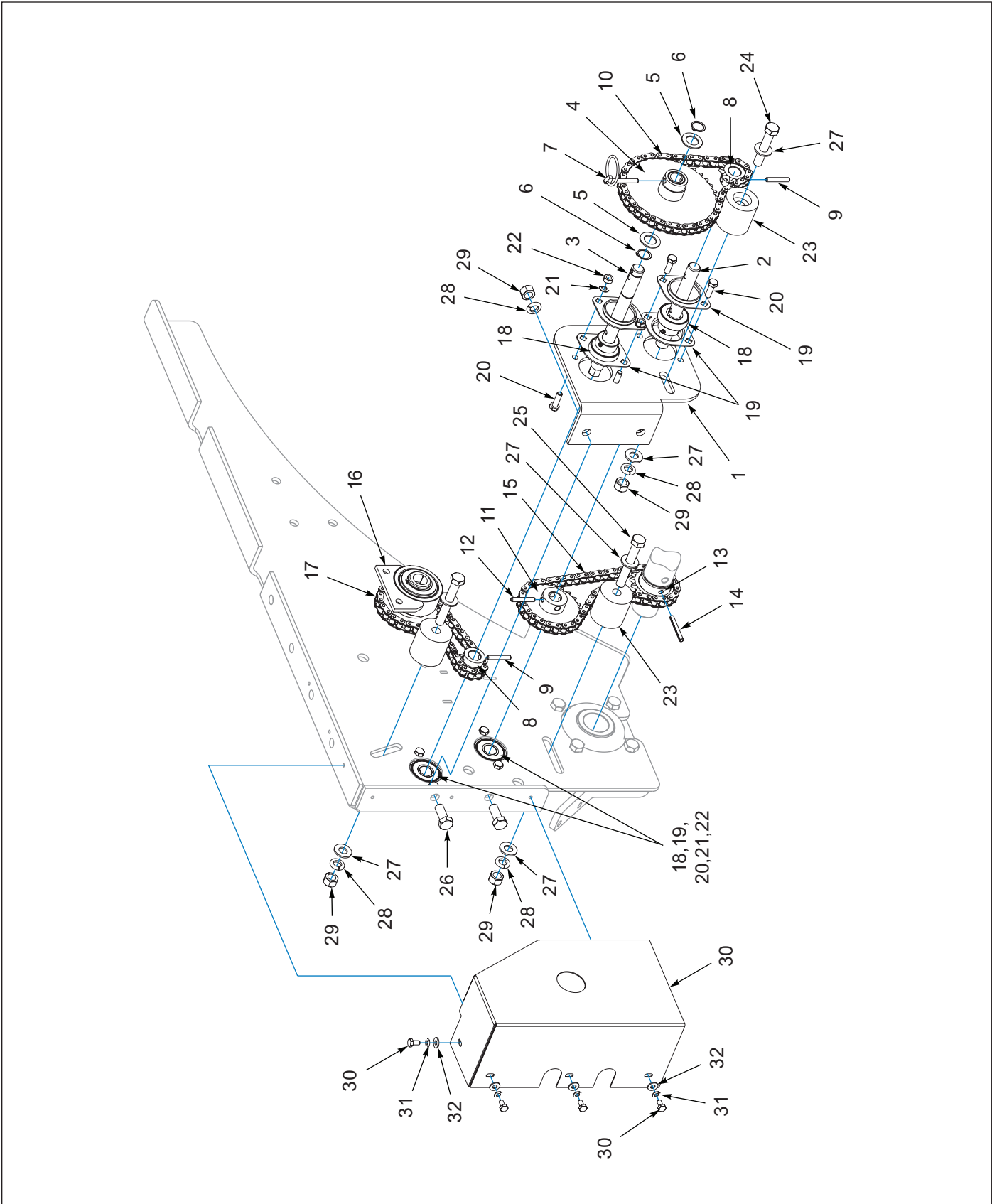


Figure 1-21: Agitator Box Drive Assembly

Agitator Seed Box Transmission

ITEM	PART NUMBER	DESCRIPTION	QTY
1	2P082	MOUNT, TRANSMISSION	1
2	2P021	SHAFT, TRANS INPUT	1
3	2P076	SHAFT, TRANS OUTPUT	1
4	2P023	SPROCKET, 37 TOOTH (W/BUSHING)	1
5	8C381	MACHINERY BUSHING (0.75 X 1.25 X 14GA)	2
6	7K016	RETAINING RING (TRUARC #5100-75)	2
7	1-557-010327	PIN LYNCH 1/4X1-1/4	1
8	2P019	SPROCKET, 10 TOOTH (#40B10 X 3/4 BORE)	2
9	1-647-010004217	SPRING PIN, SLOTTED 1/4X1-1/2	3
10	2P088	ROLLER CHAIN #40 X 46 PITCHES	1
11	9D854	SPROCKET-23 TOOTH (#40B23 X 3/4 BORE)	1
12	2P083	COVER, TRANSMISSION	1
13	2P012	SPROCKET, 17 TOOTH (ON ROLLER)	1
14	1-647-010004221	PIN,SPRING 1/4X2 SLOTTED	1
15	2P067	ROLLER CHAIN #40 X 52 PITCHES	1
16	7K677	AGITATOR SPROCKET ASSY (SEE PAGE 1-29)	1
17	2P786	ROLLER CHAIN #40 X 40 PITCHES	1
18	1D598	BEARING & COLLAR 3/4"	4
19	2K503	FLANGETTE - 2 BOLT (HALF)	8
20	1-654-010049-05	SCREW HX CP 5/16-18UNCX1 GR5	8
21	1-861-010034-10	WASHE R,LKG 5/16	8
22	1-512-010007-06	NUT, HEX 5/16-18 GR2 ZP	8
23	2K957	IDLER (2 X 2)	3
24	101510	SCREW HXCP1/2-13UNCX2-3/4 G5	1
25	1-654-010055-11	SCREW,HX CP 1/2-13UNCX3-1/2	2
26	1-654-010055-02	SCREW 1/2-13UNCX1-1/4 CP GR5	2
27	1-861-010032-14	WASHER, FLAT 1/2" N ZP/CD	6
28	1-861-010034-13	WASHER, LKG HLCL SPR, 1/2	5
29	1-512-010007-09	NUT, HEX 1/2-13 GR2 ZP	5
30	104877	SCREW,HX CP,1/4-20UNCX1/2 GR5	4
31	1-861-010034-09	WASHER, LKG HLCL SPR, 1/4	4
32	1-861-010032-06	WASHER, FLAT 1/4 N ZP/CD	4

Meter Seed Box and Agitator Seed Box Transmission

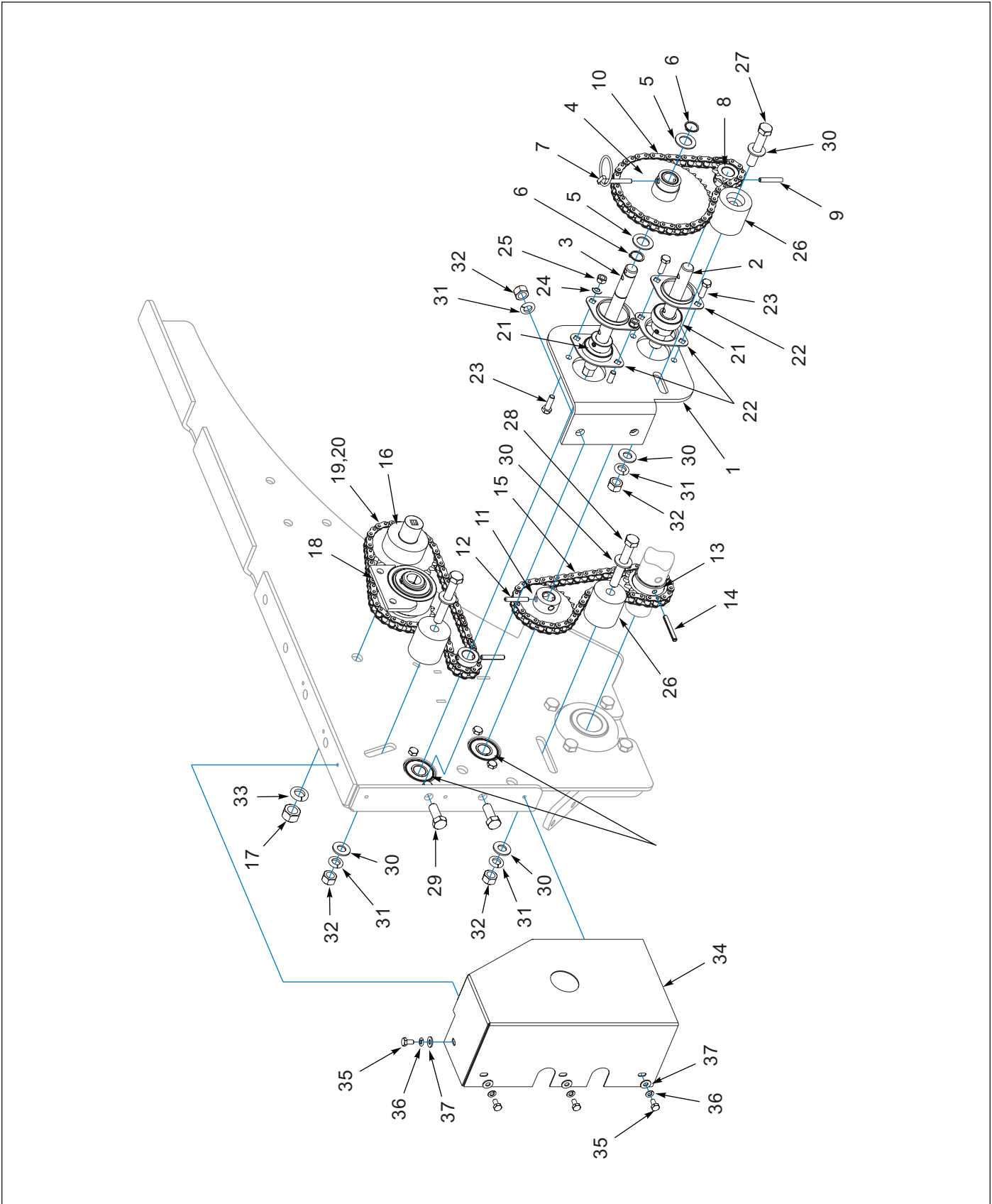


Figure 1-22: Meter Seed Box and Agitator Seed Box Transmission

Meter Seed Box and Agitator Seed Box Transmission

ITEM	PART NUMBER	DESCRIPTION	QTY
1	2P082	MOUNT, TRANSMISSION	1
2	2P021	SHAFT, TRANS INPUT	1
3	2P076	SHAFT, TRANS OUTPUT	1
4	2P023	SPROCKET, 37 TOOTH (W/BUSHING)	1
5	8C381	MACHINERY BUSHING (0.75 X 1.25 X 14GA)	2
6	7K016	RETAINING RING (TRUARC #5100-75)	2
7	1-557-010327	PIN LYNCH 1/4X1-1/4	1
8	2P019	SPROCKET, 10 TOOTH (#40B10 X 3/4 BORE)	2
9	1-647-010004217	SPRING PIN, SLOTTED 1/4X1-1/2	3
10	2P088	ROLLER CHAIN #40 X 46 PITCHES	1
11	9D854	SPROCKET-23 TOOTH (#40B23 X 3/4 BORE)	1
12	1C659	ROLL PIN, 1/4 X 1-1/2	1
13	2P012	SPROCKET, 17 TOOTH (ON ROLLER)	1
14	1-647-010004221	PIN,SPRING 1/4X2 SLOTTED	1
15	2P067	ROLLER CHAIN #40 X 52 PITCHES	1
16	7K429	26 TOOTH SPROCKET ASSY (SEE PAGE 1-25)	1
17	1-512-010007-11	NUT, HEX 5/8-11 GR2 ZP	1
18	7K677	AGITATOR SPROCKET ASSY (SEE PAGE 1-29)	1
19	2P089	ROLLER CHAIN #40 X 56 PITCHES	1
20	2P092	ROLLER CHAIN #40 X 4 PITCHES	1
21	1D598	BEARING & COLLAR 3/4"	4
22	2K503	FLANGETTE - 2 BOLT (HALF)	8
23	1-654-010049-05	SCREW HX CP 5/16-18UNCX1 GR5	8
24	1-861-010034-10	WASHER,LKG 5/16	8
25	1-512-010007-06	NUT, HEX 5/16-18 GR2 ZP	8
26	2K957	IDLER (2 X 2)	3
27	101510	SCREW HXCP1/2-13UNCX2-3/4 G5	1
28	1-654-010055-11	SCREW,HX CP 1/2-13UNCX3-1/2	2
29	1-654-010055-02	SCREW 1/2-13UNCX1-1/4 CP GR5	2
30	1-861-010032-14	WASHER, FLAT 1/2" N ZP/CD	6
31	1-861-010034-13	WASHER, LKG HLCL SPR, 1/2	5
32	1-512-010007-09	NUT, HEX 1/2-13 GR2 ZP	5
33	1-861-010034-15	WASHER,LKG,HLCL SPR,5/8	1
34	2P083	COVER, TRANSMISSION	1
35	104877	SCREW,HX CP,1/4-20UNCX1/2 GR5	4
36	1-861-010034-09	WASHER, LKG HLCL SPR, 1/4	4
37	1-861-010032-06	WASHER, FLAT 1/4 N ZP/CD	4

Coil Tine Assembly - Optional

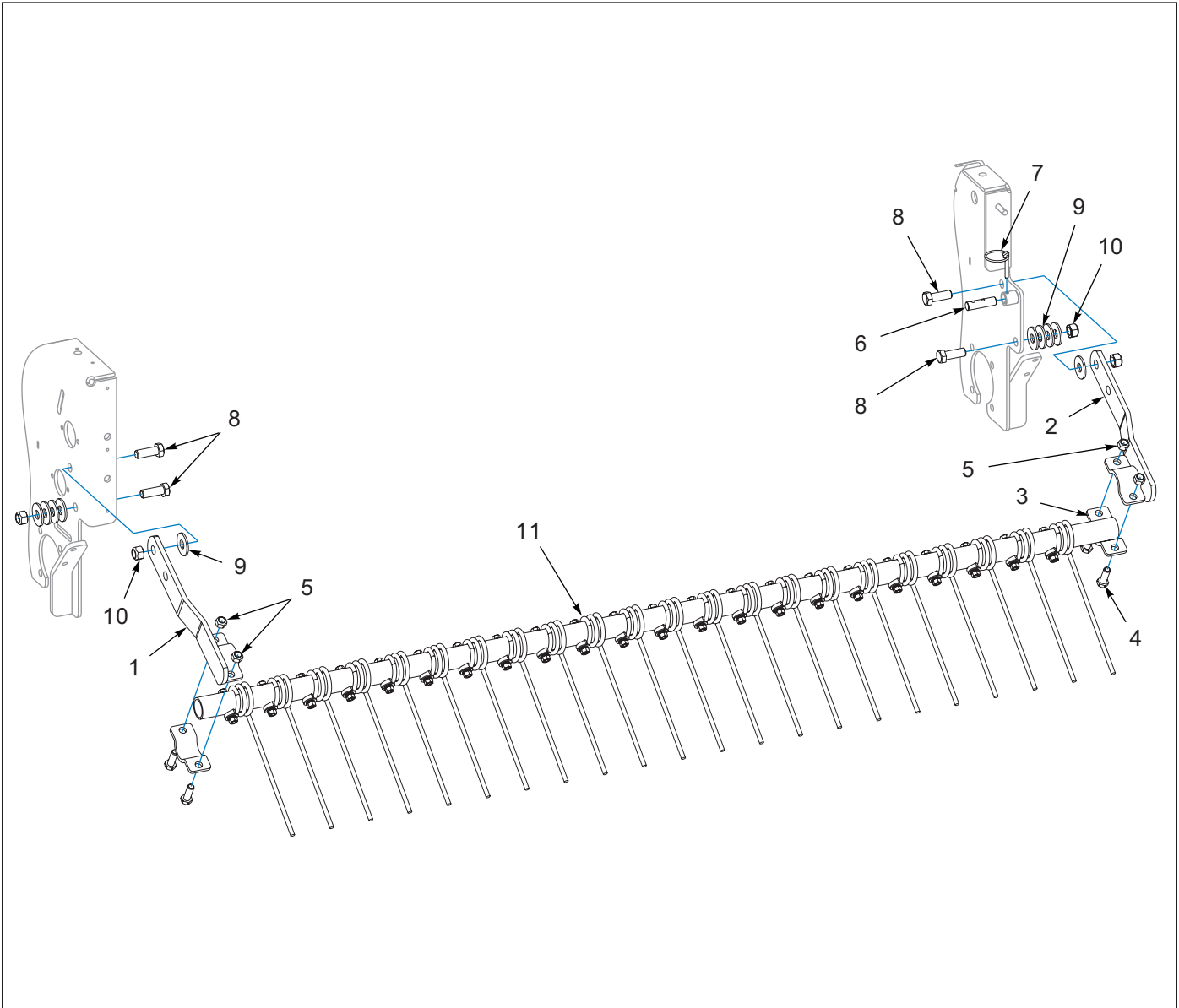


Figure 1-23: Coil Tine Assembly - Optional

Coil Tine Assembly - Optional

ITEM	PART NUMBER	DESCRIPTION	QTY
1	2P038	BRACKET, COIL TINE LH	1
2	2P066	BRACKET, COIL TINE RH	1
3	2K656	CLAMP, BLACK	2
4	1-654-010055-03	SCREW,HEX CAP,1/2-13UNCX1-1/2	4
5	1-512-010005-09	NUT,HEX,SLFLKG, 1/2-13 GRB	4
6	9J457	PIN (5/8 X 2-5/16)	1
7	1-557-010327	PIN LYNCH 1/4X1-1/4	1
8	1-654-010059-04	SCREW,HEX CAP 5/8-11X1-3/4 G5	4
9	1-861-010032-19	WASHER, FLAT 5/8 W ZP/CD	10
10	1-512-010005-13	NUT,HEX SLFLKG GRB 5/8-11	4
11	2P068	PIPE AND TINE ASM, 6' (SEE PAGE 1-37)	1

Coil Tine and Pipe Assembly

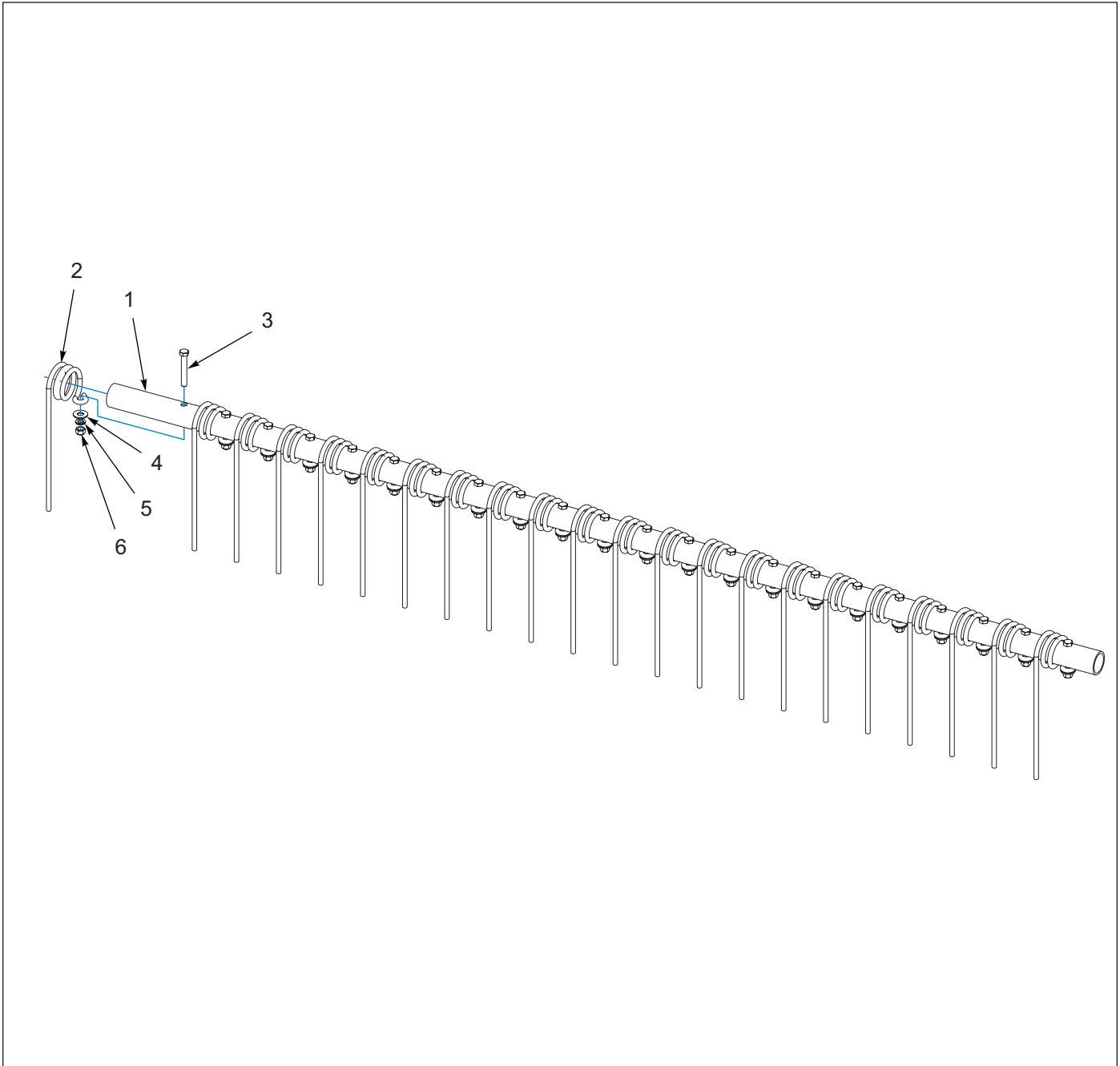


Figure 1-24: Coil Tine and Pipe Assembly

Coil Tine and Pipe Assembly

ITEM	PART NUMBER	DESCRIPTION	QTY
	2P068	PIPE AND TINE ASM, 6'	1
1	7K136	PIPE (6')	1
2	5J603	COIL TINE	22
3	1-654-010051-11	SCREW HX CP 3/8-16X2-1/2 G5ZP	22
4	1-861-010032-11	WASHER, FLAT 3/8 W ZP/CD	22
5	1-861-010034-11	WASHER, LKG HLCL SPR, 3/8	22
6	1-512-010007-07	NUT, HEX 3/8-16 GR2 ZP	22

Cargo/Rock Box - Optional

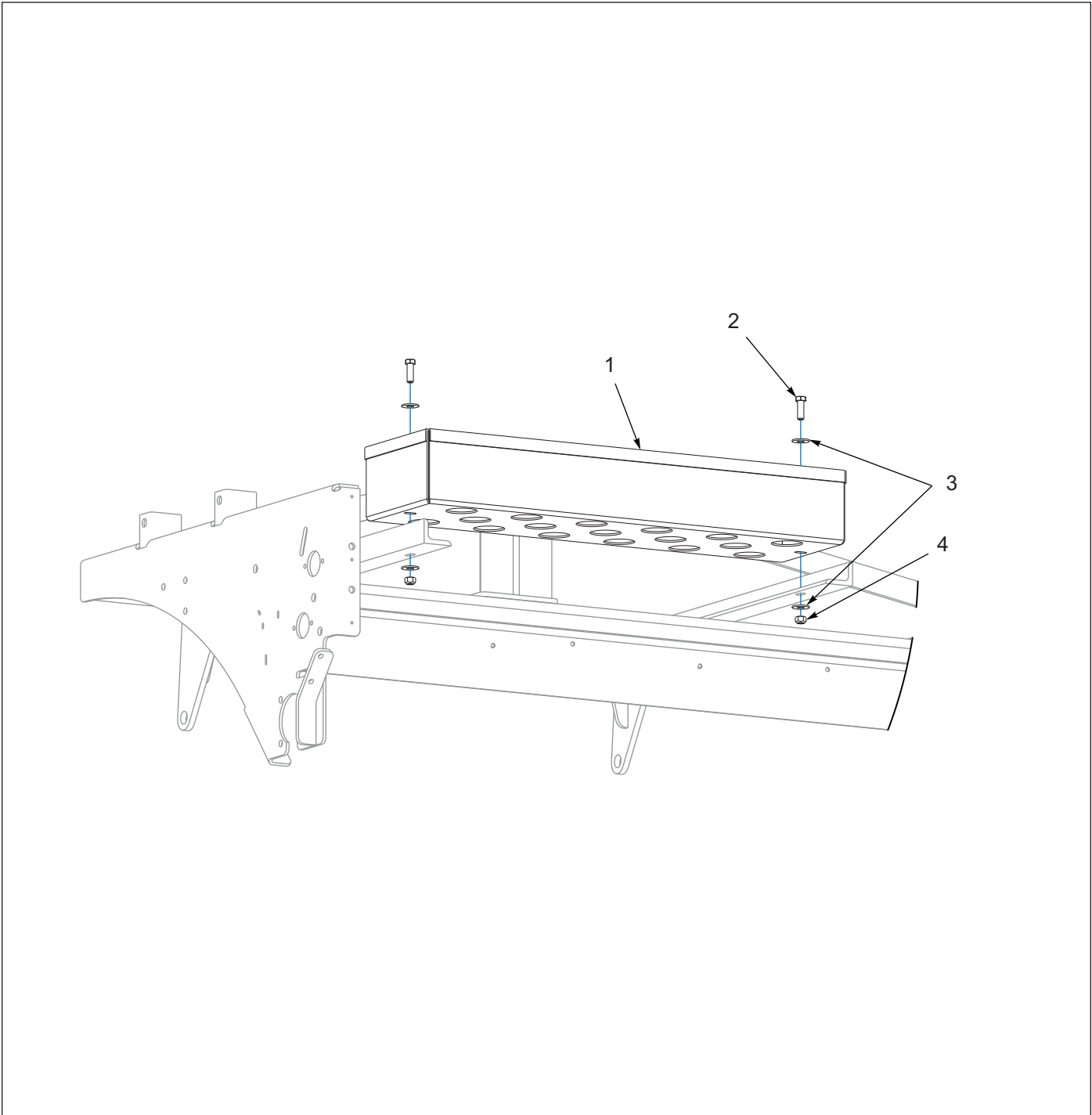


Figure 1-25: Cargo/Rock Box - Optional

Cargo/Rock Box - Optional

ITEM	PART NUMBER	DESCRIPTION	QTY
1	2P064	CARGO/ROCK BOX	1
2	1-654-010055-03	SCREW,HEX CAP,1/2-13UNCX1-1/2	2
3	1-861-010032-15	WASHER, FLAT 1/2 W ZP/CD	4
4	1-512-010005-09	NUT,HEX,SLFLKG, 1/2-13 GRB	2

Acre Meter Kit - Optional

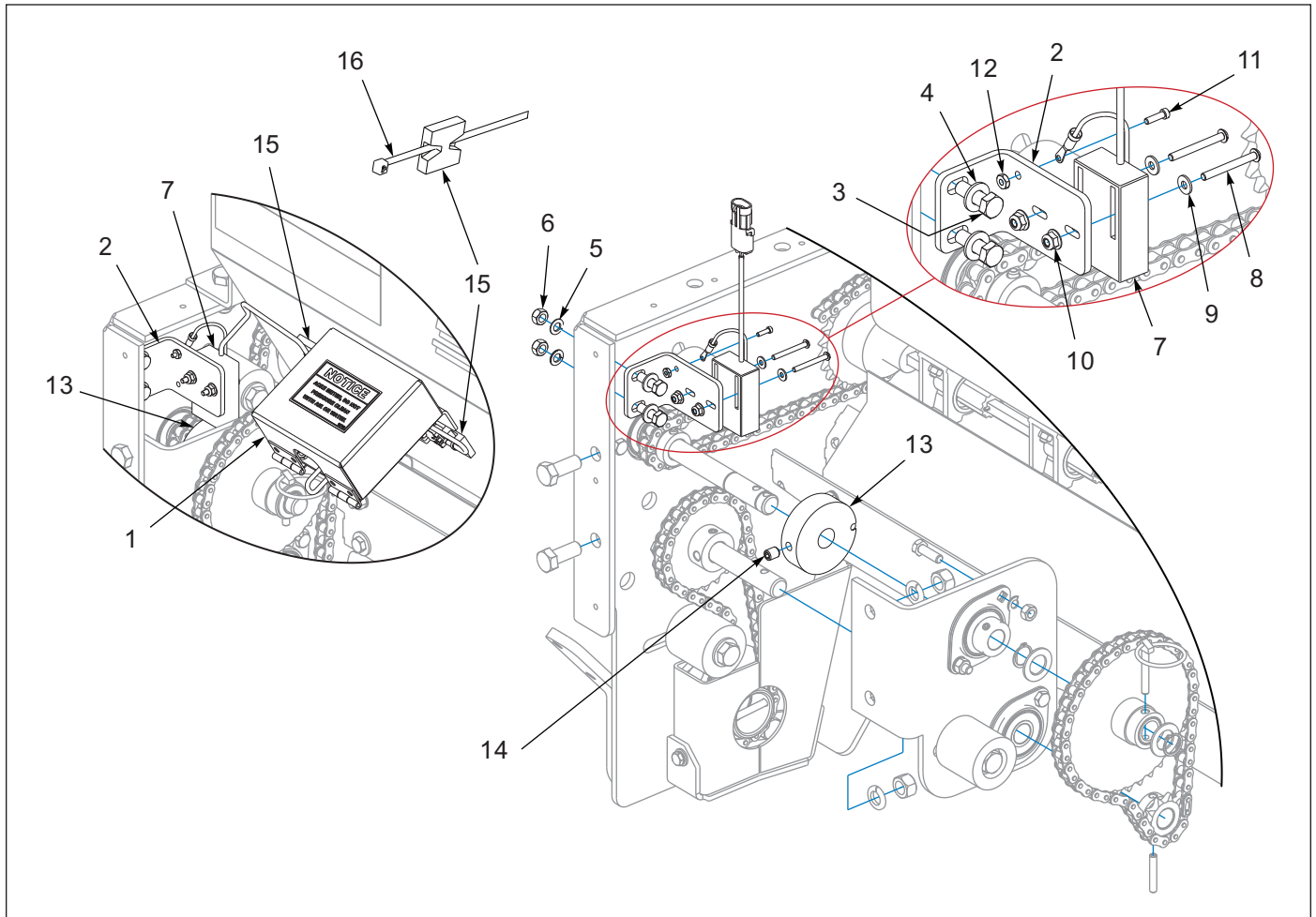


Figure 1-1: Acre Meter Kit - Optional

Acre Meter Kit - Optional

ITEM	PART NUMBER	DESCRIPTION	QTY
	210914	KIT, ACRE METER, FPS	1
1	5K310	ACRE METER ASSEMBLY (SEE PAGE 1-40)	1
2	210912	BRACKET, SWITCH	1
3	1-654-010049-05	SCREW HX CP 5/16-18UNCX1 GR5	2
4	1-861-010032-08	WASHER, FLAT 5/16 N ZP	2
5	1-861-010034-10	WASHER, LKG 5/16	2
6	1-512-010007-06	NUT, HEX 5/16-18 GR2 ZP	2
7	153862	SWITCH ASSY, ELECTRONIC ACRE	1
8	1-656-010003034	SCREW, 8-32X1-1/2 RD HD MACH	2
9	1-861-010032-02	WASHER, FL #8 ZP/CD	2
10	234115	NUT, FLANGE NY-LOK #8-32	2
11	2D045	SCREW RD HD MACH 6-32XNCX1/2	1
12	12D6E	NUT HEX HD #6-32	1
13	5K277	MAGNET WHEEL ASSY (INCLUDES ITEM 14)	1
14	122709	SCREW, SET, HXSKTCPPT 3/8-16X1/2	1
15	25079	MOUNTING PLATE (ADHESIVE)	4
16	105-0214	TY-WRAP 1/16-1-1/8 TY-524MX	4

ILLUSTRATED PARTS LIST

Acre Meter Assembly

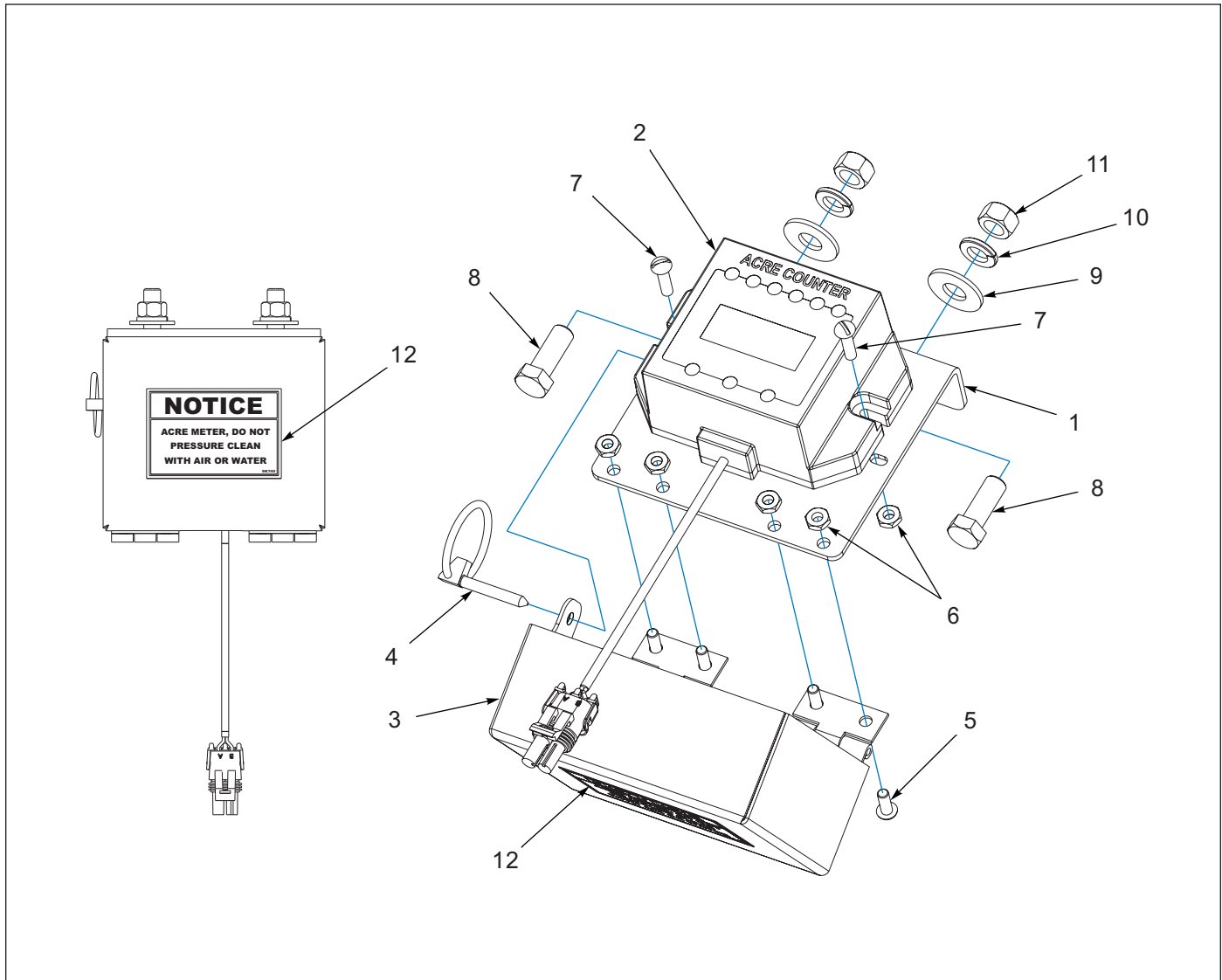


Figure 1-26: Acre Meter Assembly

Acre Meter Assembly

ITEM	PART NUMBER	DESCRIPTION	QTY
	5K310	ACRE METER ASSEMBLY	1
1	170943	MOUNT-ACRE METER	1
2	170948	CONSOLE, ELECTRONIC ACRE	1
3	170946	COVER-ACRE METER, WELDMENT	1
4	5D129	KILK-PIN (3/16 X 1-1/4)	1
5	1C213	STOVE BOLT #10-24X1/2 RD HD ZP	4
6	1-512-010007-03	NUT, HEX 10-24 GR2 ZP	6
7	1-656-010003051	SCREW,RH HD MACH 10-24X3/4	2
8	1-654-010051-05	SCREW,HEX CAP 3/8-16UNCX1 GR5	2
9	1-861-010032-11	WASHER, FLAT 3/8 W ZP/CD	2
10	1-861-010034-11	WASHER, LKG HLCL SPR, 3/8	2
11	1-512-010007-07	NUT, HEX 3/8-16 GR2 ZP	2
12	9K740	DECAL, ACRE METER	1

Hydraulic Cylinder, 2-1/2 x 6 - Lion - 671652

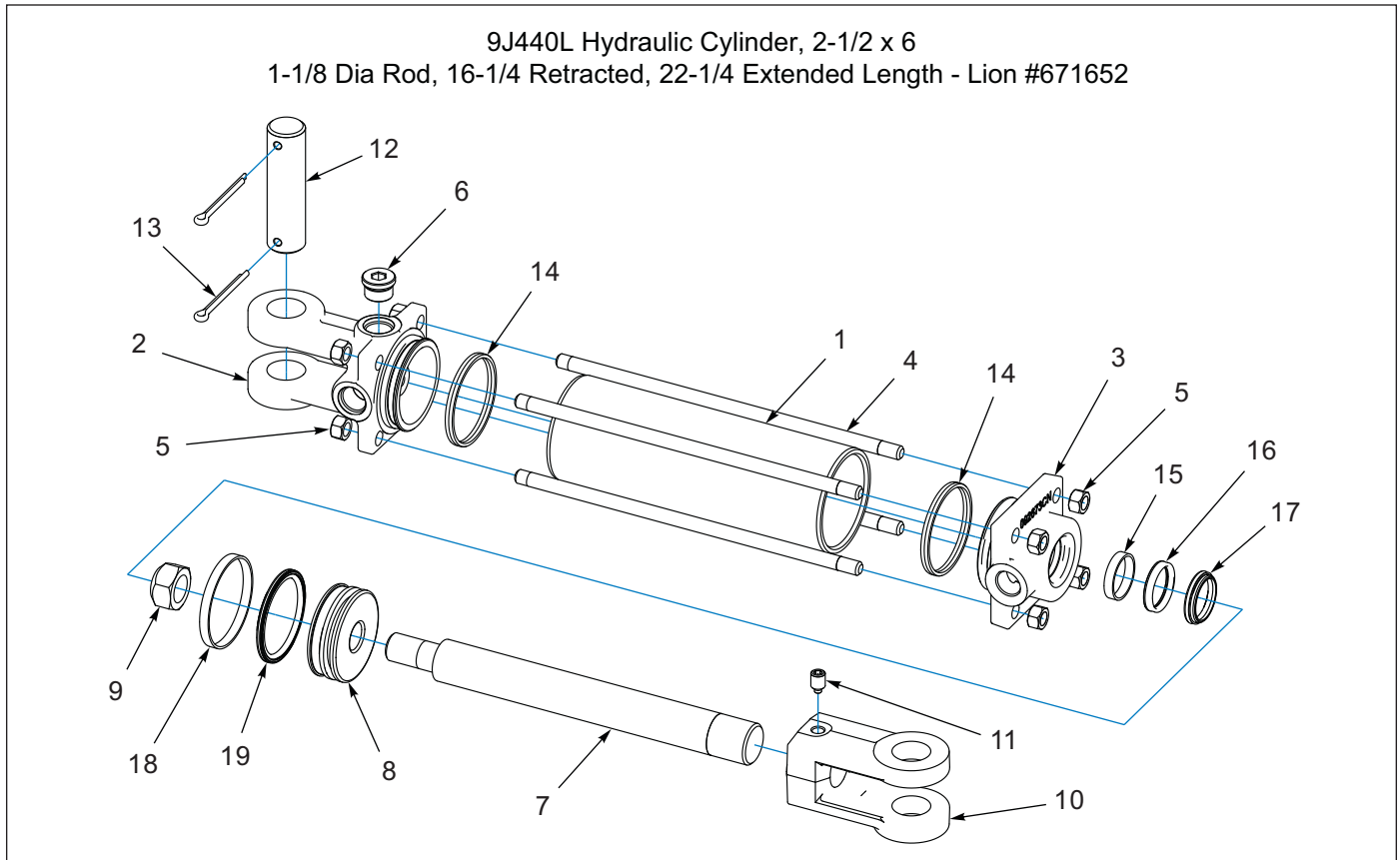


Figure 1-27: Hydraulic Cylinder, 2-1/2 x 6 - Lion - 671652

Hydraulic Cylinder, 2-1/2 x 6 - Lion - 671652

ITEM	PART NUMBER	DESCRIPTION	QTY
	9J440	HYD CYLINDER - 2-1/2 X 16	1
1	-----	TUBE	1
2	-----	CLEVIS CAP	1
3	-----	ROD CAP	1
4	-----	TIE ROD	4
5	1-512-010007-07	NUT,HEX 3/8-16 ZP	8
6	-----	PLUG,SOCKET HEAD 3/4-16	1
7	-----	ROD	1
8	-----	PISTON	1
9	1P805	NUT,LOCK 3/4-16,GRB,ZP	1
10	2P735	ROD CLEVIS (INCLUDES ITEM 11)	1
11	1P443	SET SCREW,3/8-16 X 1/2 NYLON TIP	1
12	5J650	PIN,1.0 X 3.625 H2	1
13	110-4224	COTTER PIN, 3/16 X 2IN LG	2
14	-----	SEAL DUAL 2.50	2
15	-----	WEAR RING 1.25-1.13-0.250	1
16	-----	SEAL ZURCON U-CUP RU9 1.13	1
17	-----	SEAL WIPER 1.13 WNUC	1
18	-----	WEAR RING 2.50-2.38-0.250	1
19	-----	SEAL ZURCON WYNSEAL 2.50"	1
20	1P742	SEAL KIT (INCLUDES ITEMS 14-19)	1

ILLUSTRATED PARTS LIST

Decals

ITEM	PART NUMBER	DESCRIPTION	QTY
1	4K036	DECAL-BRILLION (2 3/4 X 20)	1
2	4K037	DECAL - BRILLION (2 3/4 X 32)	1
3	528933	REFLECTOR - RED	2
4	528934	REFLECTOR - YELLOW	2
5	528938	STRIPE, ORANGE	2
6	8J310	DECAL - CAUTION	1
7	232192	DECAL, QR CODE FOODPLOT SDER	1
8	2P104	DECAL, SEED RATE CHART-FPS6 (METER SEED BOX)	1
9	2P178	DECAL, SEED RATE CHART (FPS6) (AGITATOR SEED BOX)	1
10	2P046	DECAL, FOOD PLOT 6	3
11	2K123	DECAL - 'WARNING'	2
12	2-573-010198	DECAL, MEMBER FEMA	1
13	1-573-010006	PLACARD, NAME	1
14	107-0814	RIVET 1/8X1/8 A LUM POP (HARDWARE FOR ITEM 13)	2

Decal Locations

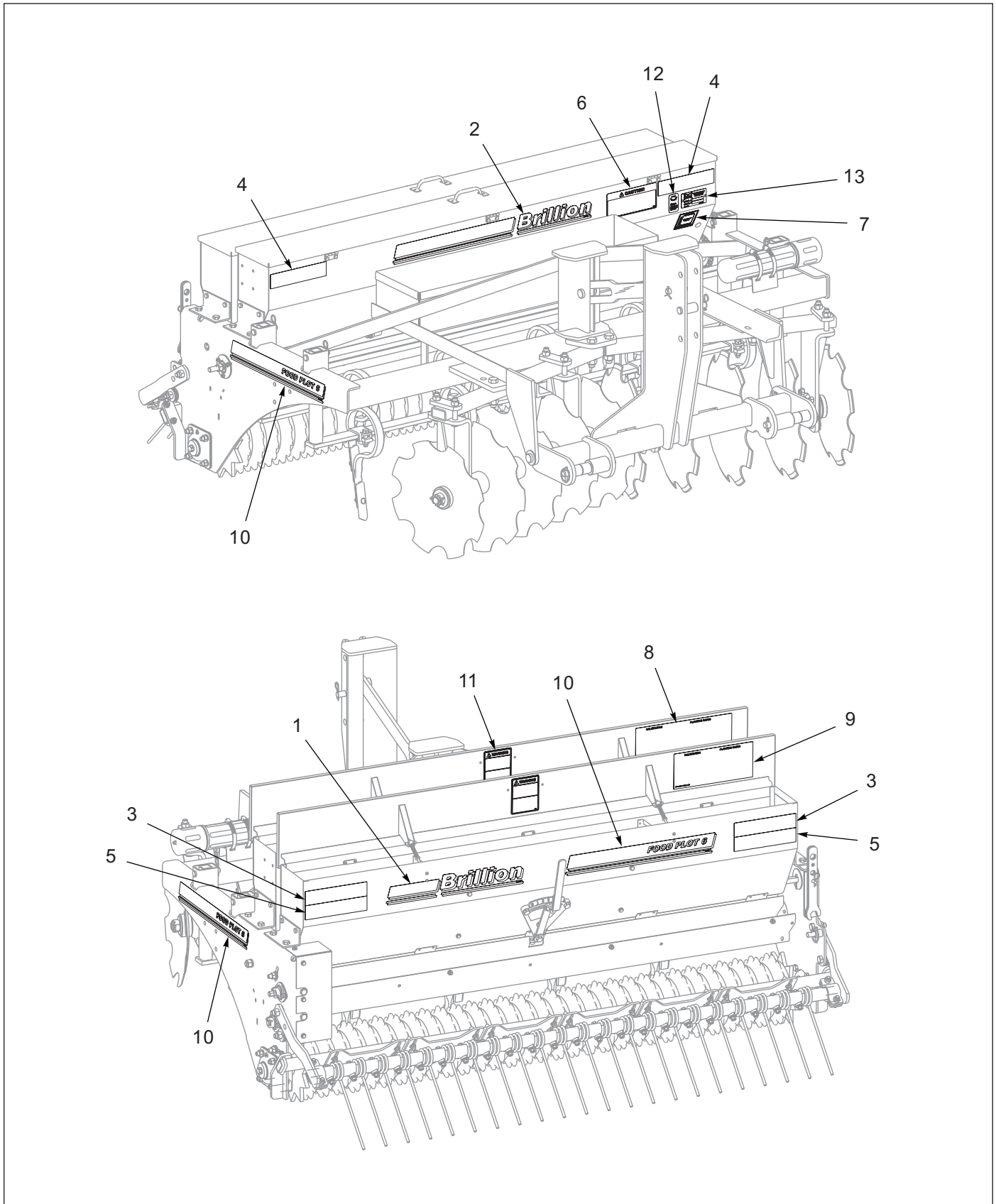


Figure 1-29: Decal Locations

Glossary

For clarity this glossary of industry standard abbreviations and their definitions are provided. For additional information, see instruction on the first page of the parts chapter or the last page of this manual.

A

ASM Assembly

B

BATT Battery
BHSC Button Head Socket Cap
BLK Black

C

CB Carriage Bolt
CONN Connector
CRG Carriage
CTSK Countersunk
CTWT Counterweight
CVR Cover
CYD Cylinder

D

DBL Double
DIA Diameter

E

ENCLSD Enclosed

F

FHCS Flanged Head Cap Screw
FHHCS Flanged Hex Head Cap Screw
FL OR FLG Flange
FLT Flat

G

GA Gauge

H

HHCS Hex Head Cap Screw
HCS High Carbon Steel
HD Head
HLCL Helical
HCSKT Hex Socket
HSFC Hex Socket Flat Countersunk
HYD Hydraulic

I

ID Inside Diameter

L

LH Lefthand
LKG OR LOCK Locking
LWR Lower

M

MANF Manifold
MNT Mount

N

NRW Narrow
 ----- Not Serviced Separately

O

OD Outside Diameter
OHG Overhead Guard
ORFS OR ORS O-Ring Seal
ORP OR ORB O-Ring Boss

P

P-STEER Power Steering
PTFE Polytetrafluoroethylene (Teflon)

GLOSSARY

R

RH Righthand
RND Round

S

SER Series
SHCS Socket Head Cap Screw
SHLD Shield
SKT Socket
SLFLKG Selflocking
SOC Socket
SPDT Single Pole Double Throw
SPR Spring
SQ Square
SRTD Serrated
SSCR Setscrew
SST Stainless Steel
STD Standard

U

UPR Upper

W

WHL Wheel
WLD OR WLDMT Weldment

Numerics

101510	1-31, 1-33, 1-35	1-557-010327	1-9, 1-31, 1-33, 1-35, 1-36
104032	1-19	1-557-010362-63	1-9
104665	1-3	1-573-010006	1-44
104877	1-23, 1-27, 1-31, 1-33, 1-35	163308	1-4
105-0093	1-3	163309	1-5
105-0214	1-39	163310	1-5
1-065-010011	1-3	163311	1-5
107-0814	1-44	163313	1-5
107-0975	1-23	163315	1-3
108628	1-19	163316	1-3
110-0354	1-9, 1-11, 1-27	163319	1-6
110-4224	1-11, 1-41	163320	1-6
1-116-010019	1-3	163324	1-3
122709	1-39	1-647-010004217	1-31, 1-33, 1-35
12D6E	1-39	1-647-010004221	1-3, 1-9, 1-31, 1-33, 1-35
137599	1-19	1-654-010047-04	1-3
141433	1-11	1-654-010049-03	1-3, 1-27
141776	1-20	1-654-010049-05	1-31, 1-33, 1-35, 1-39
141828	1-19	1-654-010049-06	1-19, 1-27
141881	1-19	1-654-010051-05	1-23, 1-27
1-512-010005-05	1-7, 1-13, 1-15	1-654-010051-06	1-7
1-512-010005-09 ..	1-5, 1-13, 1-15, 1-20, 1-21, 1-36, 1-38	1-654-010051-11	1-13, 1-15, 1-37
1-512-010005-13	1-20, 1-36	1-654-010055-01	1-27
1-512-010005-15	1-11, 1-20	1-654-010055-02 ..	1-13, 1-15, 1-23, 1-27, 1-31, 1-33, 1-35
1-512-010005-19	1-11	1-654-010055-03	1-3, 1-5, 1-36, 1-38
1-512-010007-03	1-23, 1-27	1-654-010055-05	1-21
1-512-010007-05	1-23	1-654-010055-11	1-31, 1-33, 1-35
1-512-010007-06 ..	1-3, 1-27, 1-31, 1-33, 1-35, 1-39	1-654-010059-04	1-36
1-512-010007-07	1-23, 1-27, 1-37, 1-41	1-654-010059-06	1-25
1-512-010007-09 ..	1-3, 1-23, 1-27, 1-31, 1-33, 1-35	1-654-010059-11	1-20
1-512-010007-11	1-23, 1-25, 1-31, 1-35	1-654-010061-06	1-11
151528	1-11	1-654-010070-03	1-20
153862	1-39	1-654-010077-2	1-27
		1-656-010003034	1-39

INDEX

1-861-010032-02	1-39	210914	1-39
1-861-010032-06	1-3, 1-31, 1-33, 1-35	231008	1-3
1-861-010032-08	1-39	232192	1-44
1-861-010032-09	1-3, 1-19	234115	1-39
1-861-010032-11	1-7, 1-27, 1-37	25079	1-39
1-861-010032-14	1-31, 1-33, 1-35	2-573-010198	1-44
1-861-010032-15	1-27, 1-38	2C582	1-29
1-861-010032-19	1-36	2C662	1-27
1-861-010032-20	1-11	2C808	1-27
1-861-010032-22	1-27	2C809	1-27
1-861-010032-24	1-9, 1-11	2D045	1-39
1-861-010032-25	1-20	2K123	1-23, 1-27, 1-44
1-861-010034-07	1-23, 1-27	2K451	1-23
1-861-010034-09	1-3, 1-23, 1-31, 1-33, 1-35	2K452	1-27
1-861-010034-10	1-3, 1-27, 1-31, 1-33, 1-35, 1-39	2K453	1-23, 1-27
1-861-010034-11	1-23, 1-27, 1-37	2K503	1-31, 1-33, 1-35
1-861-010034-13	1-3, 1-23, 1-27, 1-31, 1-33, 1-35	2K656	1-5, 1-36
1-861-010034-15	1-31, 1-35	2K957	1-31, 1-33, 1-35
1C199	1-23, 1-27	2P001	1-7
1C213	1-23, 1-27	2P002	1-3
1C217	1-27	2P007	1-20
1C339	1-27	2P012	1-3, 1-31, 1-33, 1-35
1C606	1-27	2P015	1-21
1D598	1-31, 1-33, 1-35	2P016	1-20
1K618	1-15	2P018	1-20
1P443	1-41	2P019	1-31, 1-33, 1-35
1P742	1-41	2P020	1-20
1P805	1-41	2P021	1-31, 1-33, 1-35
1P870	1-21	2P023	1-31, 1-33, 1-35
1P871	1-21	2P025	1-20
1P872	1-20	2P026	1-20
1P873	1-20	2P027	1-20
1P937	1-19	2P030	1-20
1P938	1-19	2P031	1-23
202702-8-8S	1-19	2P032	1-23
207051	1-3	2P038	1-36
2071-8-8S	1-19	2P044	1-20
210912	1-39	2P046	1-44

2P055	1-21	3P270	1-5
2P061	1-9	4C750	1-23
2P063	1-7	4D983	1-9
2P064	1-38	4K036	1-44
2P065	1-9	4K037	1-44
2P066	1-36	4K607	1-19
2P067	1-31, 1-33, 1-35	528933	1-44
2P068	1-36	528934	1-44
2P075	1-21	528938	1-44
2P076	1-31, 1-33, 1-35	5C077	1-9
2P082	1-31, 1-33, 1-35	5C100	1-13, 1-15
2P083	1-31, 1-33, 1-35	5C284	1-5
2P084	1-31	5D129	1-11
2P085	1-27	5D157	1-9
2P086	1-3	5J603	1-37
2P088	1-31, 1-33, 1-35	5J616	1-21
2P089	1-31, 1-35	5J650	1-13, 1-41
2P092	1-35	5K277	1-39
2P104	1-23, 1-44	5K310	1-39
2P173	1-27	5K989	1-23
2P177	1-27	6C400	1-3
2P178	1-27, 1-44	6C465	1-20
2P252	1-6	6C468	1-13, 1-20
2P461	1-11	6J448	1-13, 1-21
2P735	1-41	6K008	1-23
2P786	1-33	6K032	1-3
2P960	1-13, 1-15	6K391	1-23
2P962	1-13, 1-15	6K442	1-23
2P965	1-13, 1-15	7C086	1-29
2P973	1-11	7D728	1-21
2P982	1-13, 1-15	7D937	1-23, 1-27
2P986	1-13, 1-15	7D938	1-23, 1-27
2P987	1-11	7K016	1-31, 1-33, 1-35
2P989	1-11	7K017	1-29
2P990	1-13	7K114	1-25
3C335	1-13	7K136	1-37
3J880	1-11	7K229	1-9
3P089	1-6	7K237	1-23

INDEX

7K407 1-27
7K408 1-29
7K409 1-29
7K419 1-23
7K423 1-25
7K429 1-25, 1-31, 1-35
7K439 1-25
7K442 1-23
7K677 1-27, 1-29, 1-33, 1-35
8C381 1-31, 1-33, 1-35
8C892 1-25
8D099 1-11
8J310 1-44
8J564 1-27
9D793 1-27
9D816 1-23
9D854 1-31, 1-33, 1-35
9J338 1-3
9J422 1-27
9J440 1-13, 1-19, 1-41
9J457 1-36
9J848 1-9, 1-11

Instructions for Ordering Parts

**** Repair parts must be ordered through an authorized dealer ****

DEALER INSTRUCTIONS FOR ORDERING PARTS FROM LANDOLL PARTS DISTRIBUTION CENTER

PHONE #: 800-423-4320 OR 785-562-5381

FAX #: 888-527-3909

ORDER ONLINE: Dealer.landoll.com

DATA PLATE

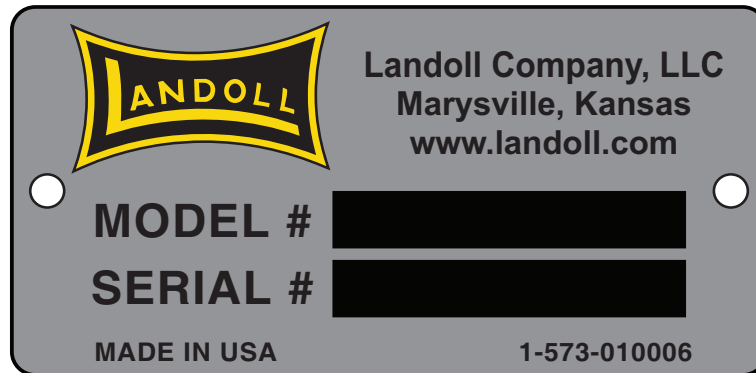
The Data Plate lists the model and serial number of the equipment.
It is located on the right side of the Food Plot Seeder.

SERIAL NUMBER NOMENCLATURE

The following information will help decode the Landoll serial number.

FSD24000100 = xxmysssss

xx	= model series (i.e. "FS" for all Food Plot Seeders)
m	= month of manufacture (ex. "D" means April. The letter I is not used.)
yy	= last digits of the year manufactured (ex. "24" means 2024)
sssss	= Sequential number used to track warranty and service information.



Data Plate

Manuals for Food Plot Seeder

Manual Number	Manual Type
2P102	Operator's Manual
2P103	Parts Manual

Document Control Revision Log:

Date	Form #	Improvement(s): Description and Comments
09/07/2008	2P103-rev0708	(908rev0708) Initial Release
09/12/2011	2P103-rev0911	(908rev0911) Improved Drawings, translated to Landoll Format
08/12/2020	2P103-rev0820	ECN 46317 - Add Shield to prevent Chain Derailing
05/2024	2P103-2405	ECN 49704 - Landoll P/N's, Decals, Acre Meter etc. *Revision Format "Year/Month" Updated ISO logos to ISO 9001:2015 (Revised 04/2024)



intertek

Equipment from Landoll Company, LLC is built to exacting standards ensured by ISO 9001:2015 registration at all Landoll manufacturing facilities.

Food Plot Seeder Models FPS6, FPST6, FPSB6, FPSBT6 Parts Manual

Re-Order Part Number 2P103

LANDOLL COMPANY, LLC

1900 North Street

Marysville, Kansas 66508

(785) 562-5381

800-428-5655 ~ WWW.LANDOLL.COM



Copyright 2024. Landoll Company, LLC

“All rights reserved, including the right to reproduce this material or portions thereof in any form.”

