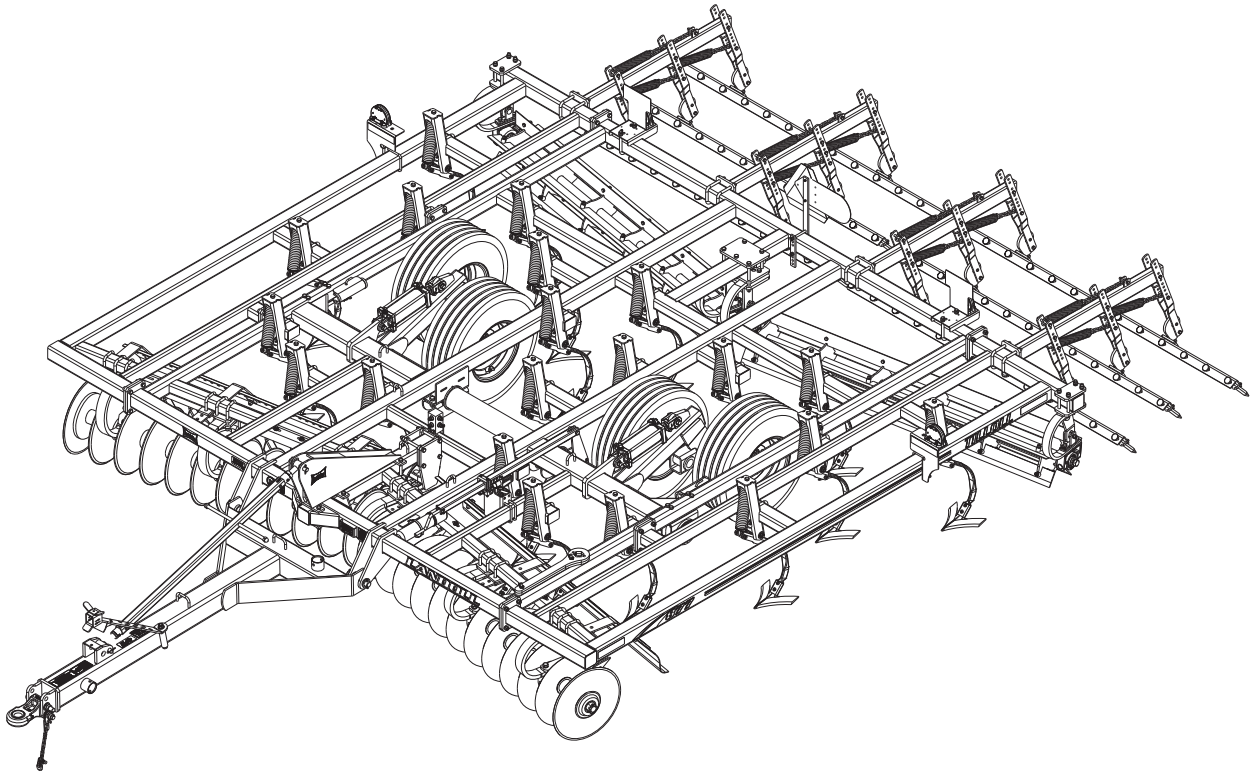




**Model 877 Rigid
Tilloll
Parts Manual**



LANDOLL COMPANY, LLC

1900 North Street

Marysville, Kansas 66508

(785) 562-5381

800-428-5655 ~ WWW.LANDOLL.COM

Instructions for Ordering Parts

**** Repair parts must be ordered through an Authorized Dealer ****

DEALER INSTRUCTIONS FOR ORDERING PARTS FROM LANDOLL PARTS DISTRIBUTION CENTER

Phone #: 800-423-4320 or 785-562-5381

Fax #: 888-527-3909

Order online: dealer.landoll.com

SERIAL NUMBER PLATE

The Serial Number Plate, which lists the model number and serial number, is located on the front of the frame

See Figure 1-1.

SERIAL NUMBER NOMENCLATURE

The following information will help decode the 877 Rigid Tilloll serial number

01H2500100 = xxmysssss

The Tilloll series QR code decal, may be scanned to link to the most current manuals, located on the front of the frame *See Figure 1-1.*

xx	= model series (i.e. 01 for Tilloll)
m	= month of manufacture (ex. "H" means October. The letter I is not used.)
yy	= year manufactured (ex. "25" means 2025)
sssss	= Sequential number used to track warranty and service information.

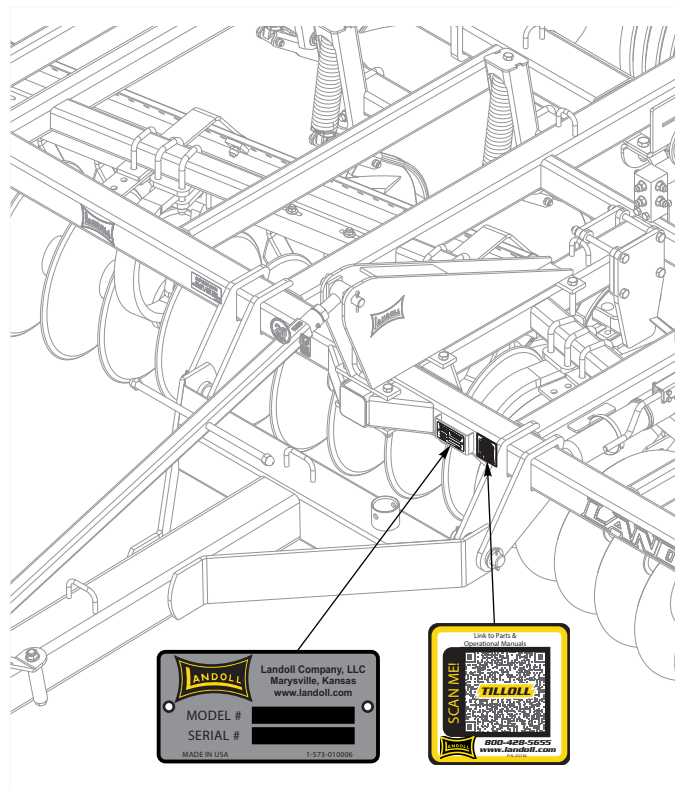


Figure 1-1: Serial Number Plate and QR Code Decal Location

Manuals for 877 Rigid Tilloll

Manual Number	Manual Type
F-1185	Operator's Manual
F-1186	Parts Manual

Table of Contents

1	Frame Assemblies	
	Center Frame & Lift Assembly	1-1
	Center Frame Extension Assembly	1-5
	Depth Stop Assembly	1-7
	Walking Beam Assembly	1-8
	Hub/Spindle Assembly	1-9
2	Hitch Assemblies	
	Hitch Assembly	2-1
	Jack Assembly	2-3
	Ball and Clevis Hitches	2-5
3	Disc Gang Assemblies	
	Disc Gang Assembly	3-1
	Disc Gang Placement	3-3
	Disc Gang & Shield Assembly	3-5
	Disc Bearing Assembly	3-7
4	Shank Assemblies	
	Spring Shank Assembly	4-1
	Center Shank Mount Assembly	4-3
5	Reel and Harrow Assemblies	
	Reel & Harrow Layout	5-1
	Reel Assembly	5-3
	Chopper Reel Assembly	5-5
	Harrow Assembly	5-7
6	Hydraulics	
	Hydraulic Assembly Lift	6-1
7	Cylinders	
	Cylinder Assembly 4 x 8	7-1
8	Electrical	
	Electrical Assembly W/LED Lights Wiring Chart	8-1
	Electrical Assembly W/LED Lights	8-3
9	Decals	
	Decals	9-1
10	Glossary	
11	Index	

Frame Assemblies

Center Frame & Lift Assembly

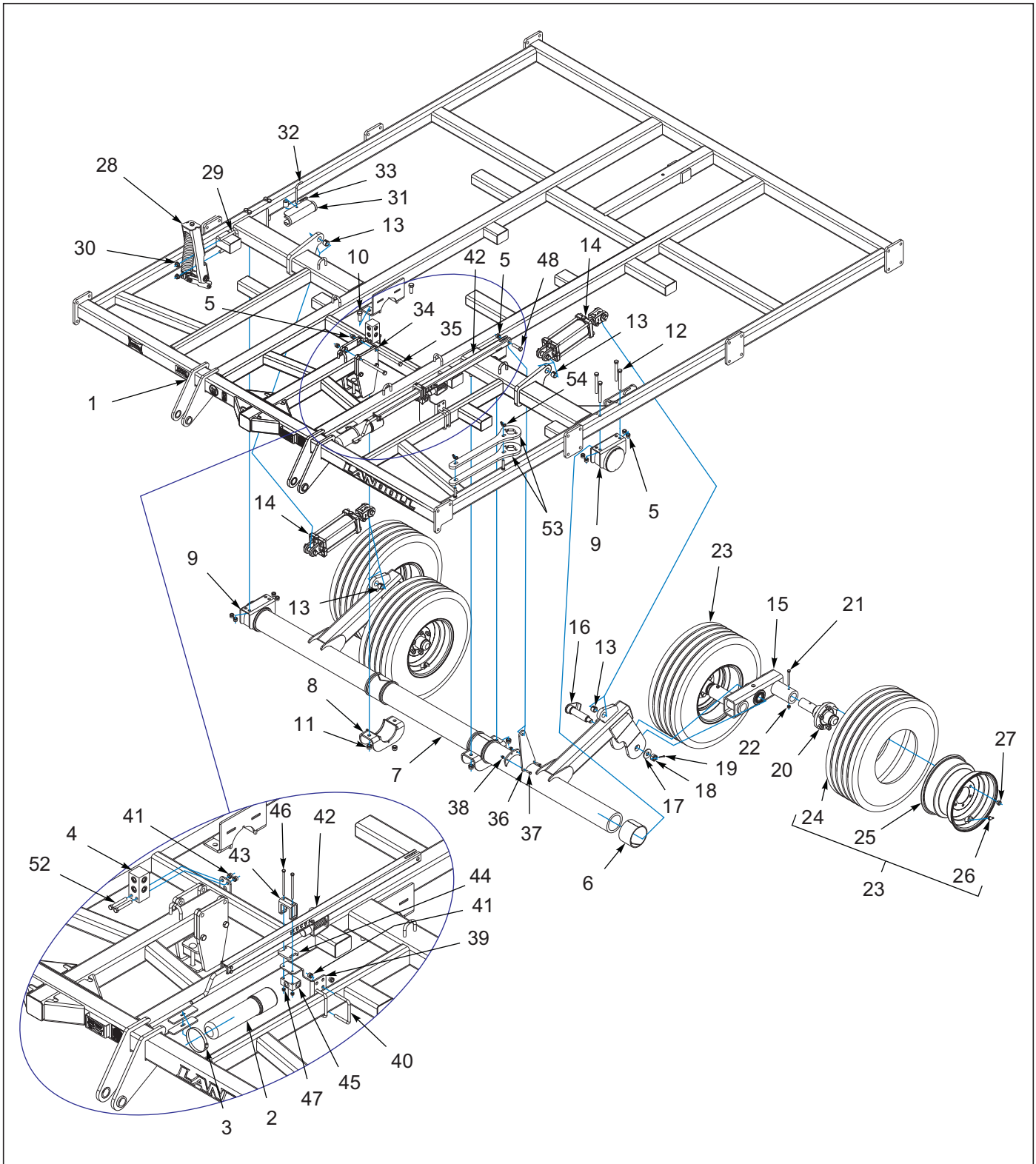


Figure 1-1: Center Frame & Lift Assembly

Center Frame & Lift Assembly

ITEM	PART NUMBER	DESCRIPTION	QTY.
1	254224	FRAME WLDMT, RIGID CENTER	1
2	1-116-010019	BOX, MANUAL STORAGE	1
3	105-0093	HOSE CLAMP 4-1/2 IDEAL #5264	1
4	2-474-010022	MANIFOLD HYDRAULIC, 8 HOSE	1
5	1-512-010005-13	NUT,HEX SLFLKG GRB 5/8-11	9
6	140519	BEARING, UHMW 4IN	4
7	254227	LIFT WLDMT, RIGID CENTER	1
8	141234	WLDMT, BEARING CAP LIFT	2
9	179655	BEARING CAP, LIFT WLDMT	2
10	1-654-010061-05	SCREW,HHC,3/4-10UNCX2,GR5,ZP	4
11	1-512-010005-15	NUT,HEX,SLFLKG GRB 3/4-10	4
12	1-654-010059-16	SCREW,HEX CAP,5/8-11UNCX5.50	8
13	192890	BUSHING 1-3/8ODX1 IDX1 STEEL	4
14	148387	CYLINDER HYDRAULIC 4 X 8	2
15	144213	WALKING BEAM ASSY, 2-1/4" (SEE PAGE 1-8)	2
16	141196	SPINDLE, WALKING BEAM WLDMT	2
17	1-861-010005	WASHER, SPINDLE 1	2
18	1-516-010001-20	NUT, HX SLOT 1-14	2
19	1-557-010362-51	PIN, COTTER 3/16X1-1/2	2
20	164352	HUB ASSY, 6BOLT 2-1/4 SPINDLE (SEE PAGE 1-9)	4
21	141809	SCREW HX CP7/16-14UNC X 4 GR5	4
22	101988	NUT,HEXSLF-LKG 7/16-14 GRB	4
23	142650	TIRE/WHEEL ASSY 280/70R15	4
24	204384	FIRESTONE RADIAL 280/70R15	4
25	140547	WHEEL, 15 X 10 LB 6 BOLT	4
26	415	VALVE STEM	4
27	210606	WHEEL NUT 9/16-18UNF	24
28	225540	SHANK ASSY, SPRING, 3 X 4 TUBE (SEE PAGE 4-1)	1
29	229555	U-BOLT, 5/8 X 3-11/16 X 5-3/4	1
30	29SFFL 5811	NUT,FLANGE HEAD LOCK5/8-11UNC	2
31	231777	LOCKOUT, 1-3/4" RODX8 WLDMT	2
32	104358	L PIN,CYL STOP	2
33	1-557-010403	HAIRPIN 1/8	2
34	254230	ASSY, CTR SHANK MNT, 4" TUBE (SEE PAGE 4-3)	1
35	123096	SCREW,HX CP 5/8-11UNCX7.50GR5	4
36	164124	MOUNT, DEPTH CONTROL	1
37	1-654-010051-06	SCREW,HEX CAP 3/8-16UNCX1-1/4	2
38	1-512-010005-05	NUT, HEX, SLFLKG GRB 3/8-16	2
39	225531	BRACKET, DCV MOUNT	1
40	5J915	U-BOLT 1/2-13 X 3-1/4 X 4-9/16	2
41	1-512-010005-09	NUT,HEX,SLFLKG, 1/2-13 GRB	4
42	225532	ASSY, DEPTH STOP 47" (SEE PAGE 1-7)	1
43	165265	GUIDE, DEPTH STOP	1
44	165257	PAD, SLIDE	1
45	185660	VALVE, LIMIT	1
46	1-654-010049-19	SCREW,HEX CP,5/16-18UNCX5 GR5	2
47	1-512-010005-03	NUT HEX SLFLKG GRB 5/16-18	2
48	1-654-010059-07	SCREW HX CP 5/8-11UNCX2-1/2G5	1
49	1-654-010055-11	SCREW,HX CP 1/2-13UNCX3-1/2	2

ITEM	PART NUMBER	DESCRIPTION	QTY.
50	2-217-010033	WRENCH COULTER GANG NUT	2
51	1-533-010001	1/2-13 WING NUT 20 TYPE A	2

Center Frame Extension Assembly

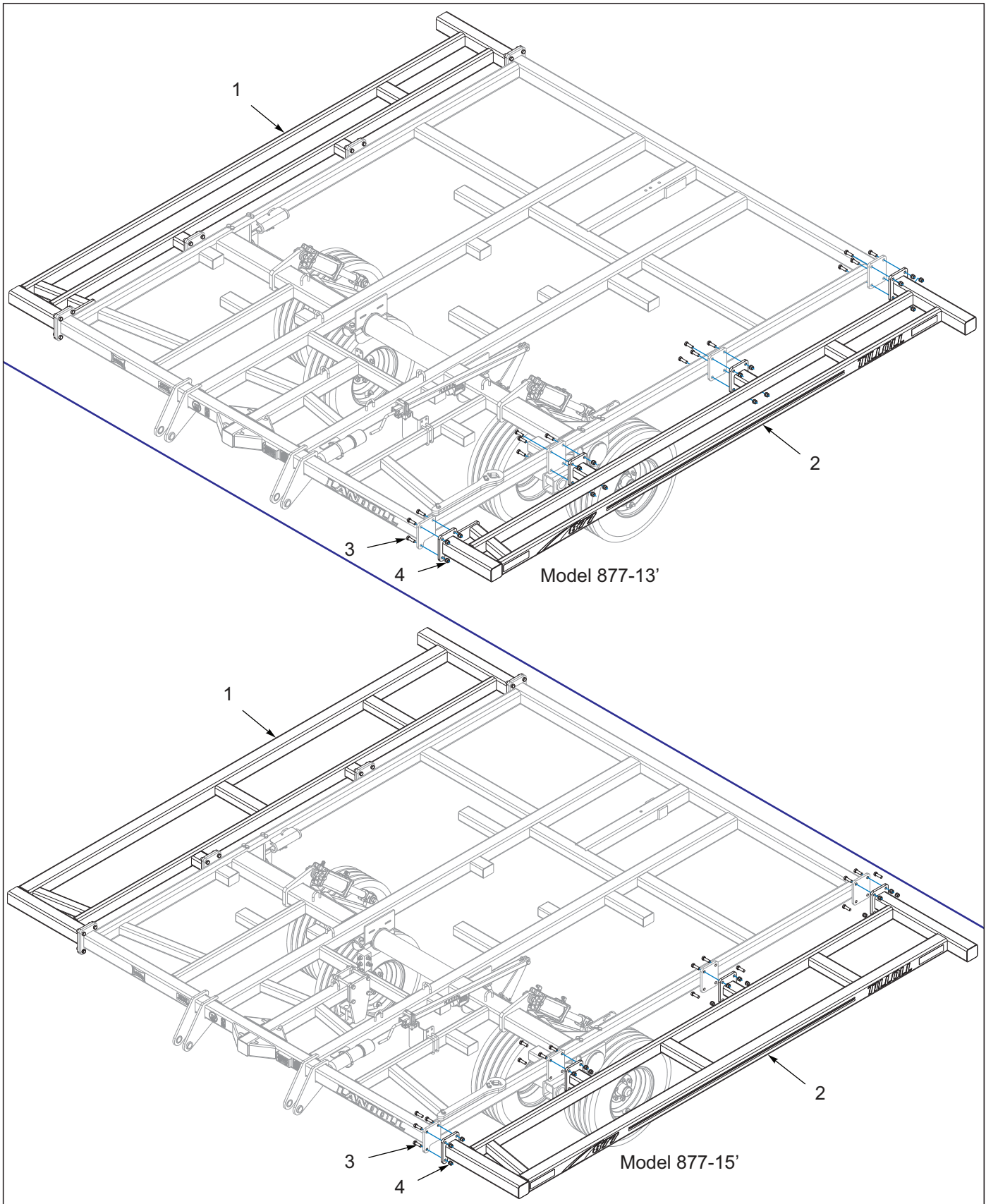


Figure 1-2: Center Frame Extension Assembly

Center Frame Extension Assembly

ITEM	PART NUMBER	DESCRIPTION	QTY.	QTY.
--	-----	CENTER FRAME EXTENSION 877-13'	*	
--	-----	CENTER FRAME EXTENSION 877-15'		*
1	256714	FRAME WLDMT, RH EXT, 13'	1	--
1	254226	FRAME WLDMT, RH EXT, 15'	--	1
2	256713	FRAME WLDMT, LH EXT, 13'	1	--
2	254225	FRAME WLDMT, LH EXT, 15'	--	1
3	1-654-010059-05	SCREW,HEX CAP,5/8-11UNCX2 GR5	30	30
4	1-512-010005-13	NUT,HEX SLFLKG GRB 5/8-11	30	30

Depth Stop Assembly

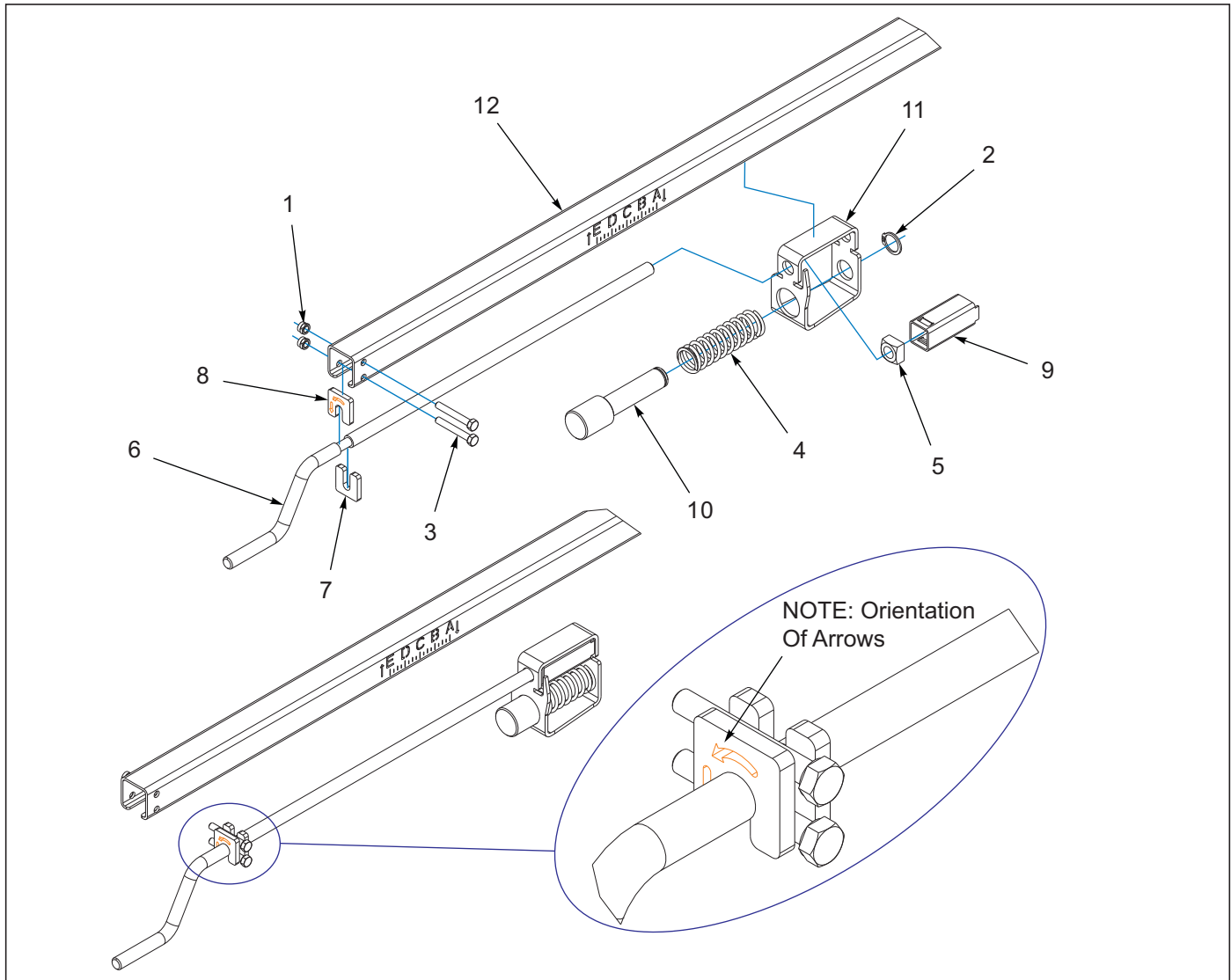


Figure 1-3: Depth Stop Assembly

Depth Stop Assembly

ITEM	PART NUMBER	DESCRIPTION	QTY.
--	225532	ASSY, DEPTH STOP 47"	
1	1-512-010005-03	NUT HEX SLFLKG GRB 5/16-18	2
2	1-630-010021-03	RING, RETAINING 1.0 HD	1
3	108628	SCREW HX CP 5/16-18UNCX2-1/4	2
4	122917	SPRING COMPRESSION,4-1/2 MONO	1
5	144048	NUT, SQ 5/8-11 GR5	1
6	165258	HANDLE, DEPTH STOP	1
7	165259	STOP, HANDLE LONG	1
8	165260	STOP, HANDLE SHORT	1
9	166717	SQ TUBE, FLOATING	1
10	174708	PIN, DEPTH STOP	1
11	174709	SQ TUBE, DEPTH STOP	1
12	225533	SQ TUBE, DEPTH STOP 47"	1

Walking Beam Assembly

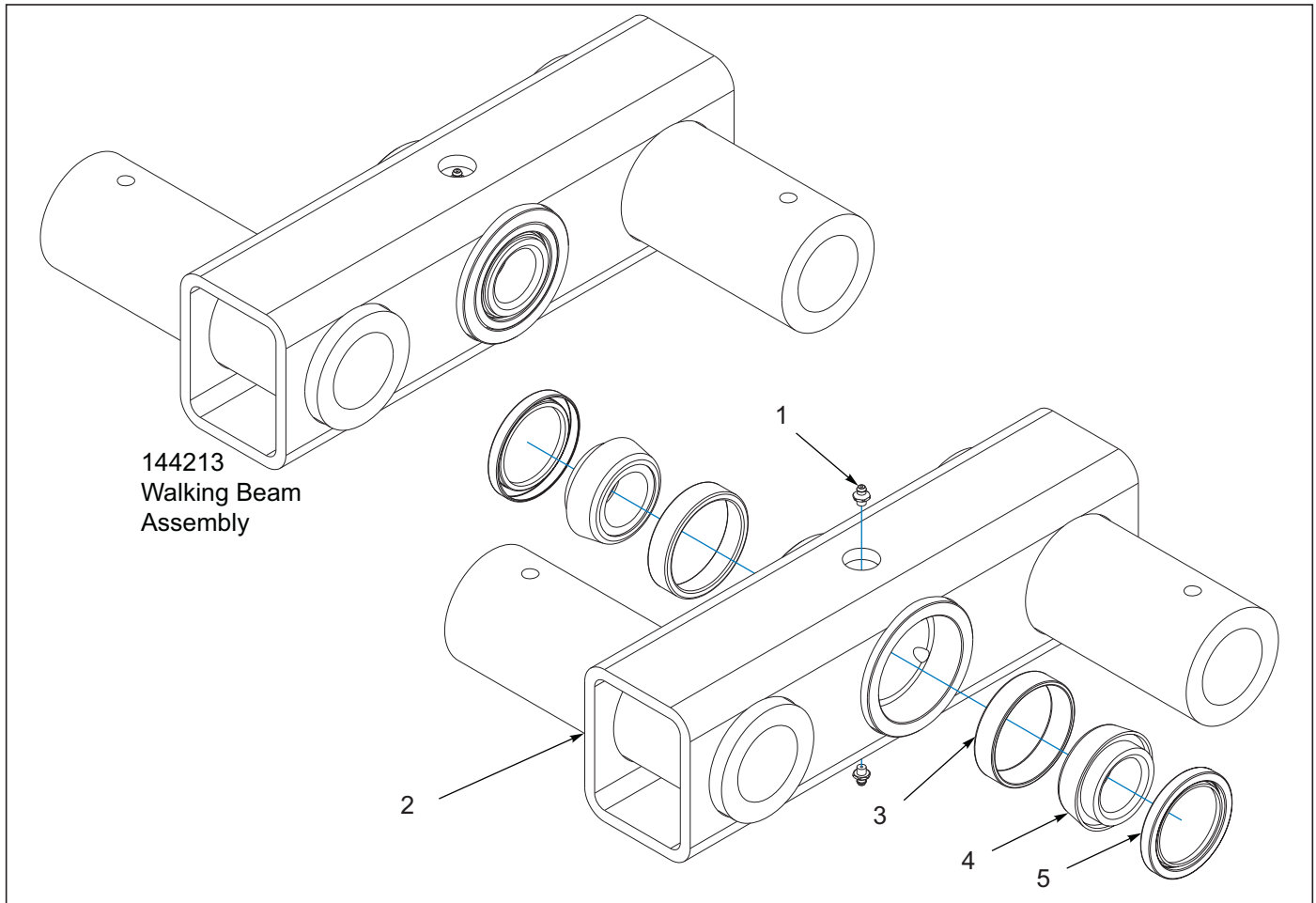


Figure 1-4: Walking Beam Assembly

Walking Beam Assembly

ITEM	PART NUMBER	DESCRIPTION	QTY.
--	144213	WALKING BEAM ASSY, 2-1/4"	
1	1-298-010001-1	ZERK FITTING 1/4 SAE	2
2	140515	WALKING BEAM 2-1/4 SPINDLE WLD	1
3	140551	CUP BEARING	2
4	140552	CONE BEARING	2
5	140553	SEAL GREASE	2

Hub/Spindle Assembly

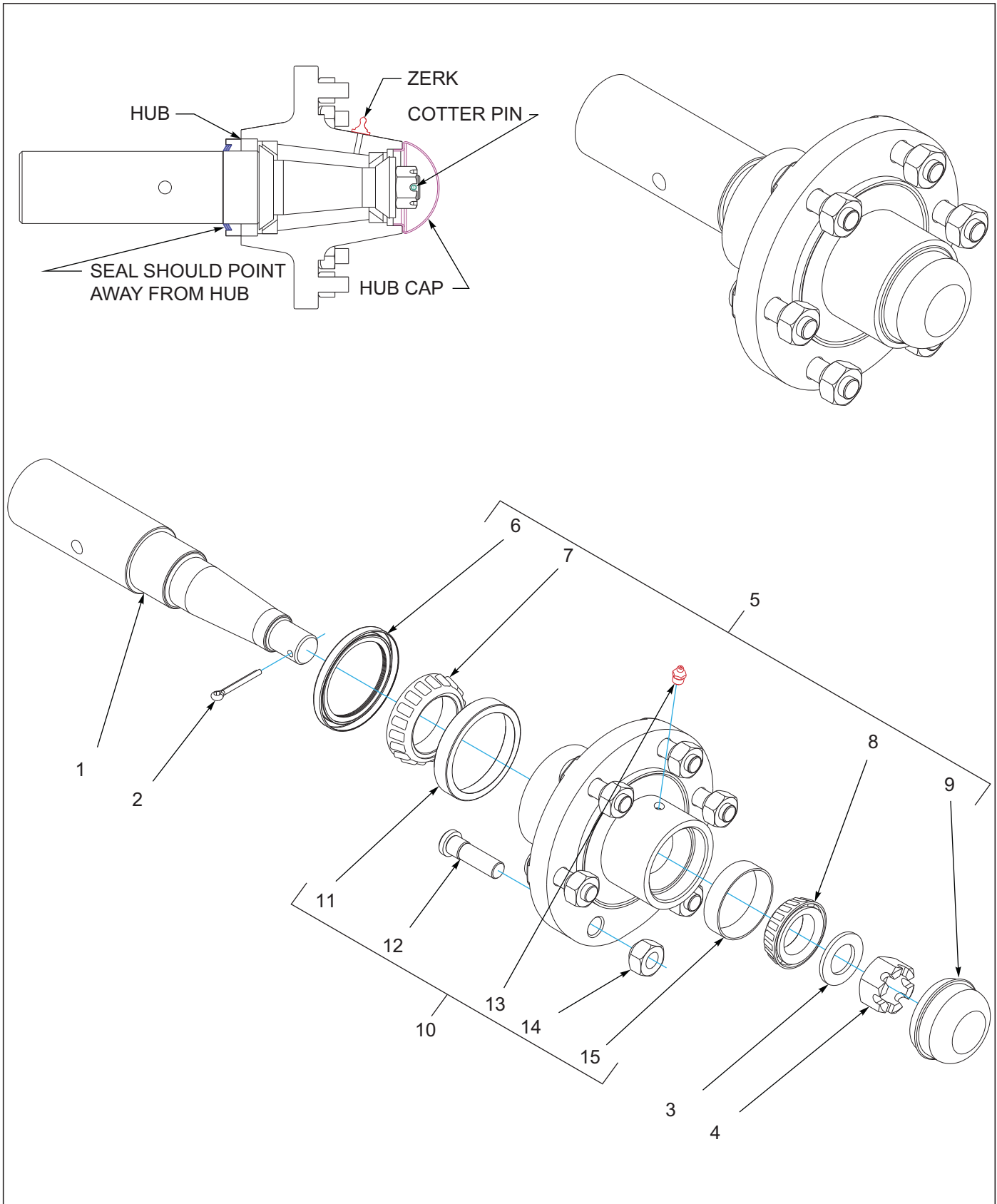


Figure 1-5: Hub/Spindle Assembly

Hub/Spindle Assembly

ITEM	PART NUMBER	DESCRIPTION	QTY.
--	164352	HUB ASSY, 6BOLT 2-1/4 SPINDLE	
1	164349	SPINDLE 2-1/4	1
2	1-557-010362-51	PIN, COTTER 3/16X1-1/2	1
3	141238	WASHER, SPINDLE	1
4	1-516-010001-20	NUT, HX SLOT 1-14	1
5	141866	HUB ASSY SIX BOLT (INCL. ITEMS 6-10)	1
6	140554	SEAL GREASE	1
7	102498	BEARING CONE, OUTER, 1.625	1
8	1-076-010007	CONE INNER	1
9	141236	DUST CAP, WHEEL HUB	1
10	140645	HUB W/CUPS, SIX BOLT (INCL. ITEMS 11-15)	1
11	102604	BEARING CUP, OUTER	1
12	143066	STUD BOLT 9/16-18	6
13	5000	ZERK FITTING 1/8NPT	1
14	210606	WHEEL NUT 9/16-18UNF	6
15	1-076-010010	CUP INNER	1

Hitch Assemblies

Hitch Assembly

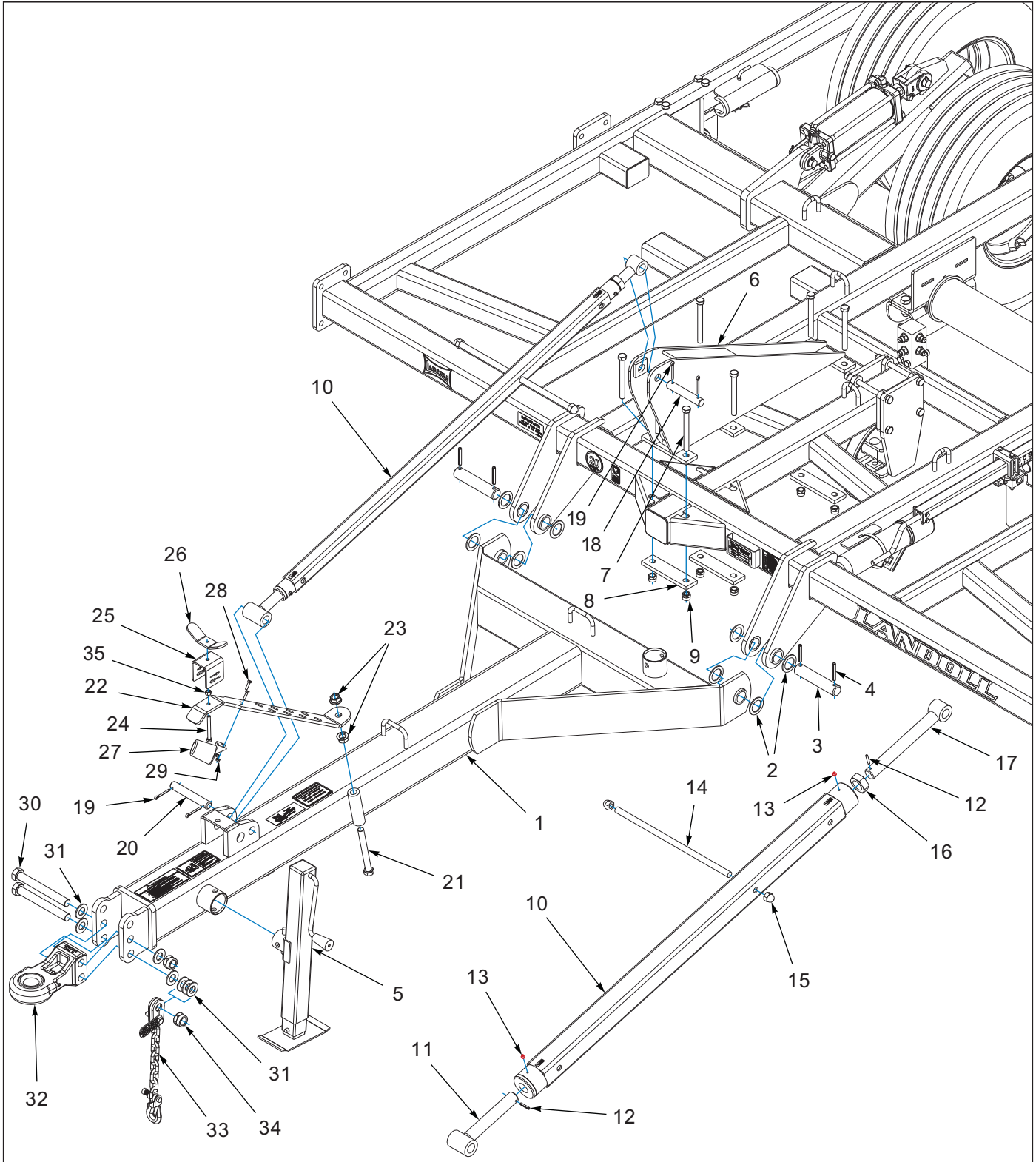


Figure 2-1: Hitch Assembly

TABLE OF CONTENTS

Hitch Assembly

ITEM	PART NUMBER	DESCRIPTION	QTY.
1	254228	HITCH WLDMT, 877, NARROW	1
2	8-861-010021	FW 2-3/8ODX1-5/8IDX1/8 ZP	8
3	8-557-010114	HITCH PIN	2
4	1-647-010004257	PIN,SPRING,SLOTTED 3/8X2-1/2	4
5	140647	JACK, SIDE WIND 7000/8000 LB (SEE PAGE 2-3)	1
6	254229	MAST WLDMT, 877, Ø1" PIN	1
7	1-654-010059-17	SCREW,HX CP,5/8-11UNCX6 GR5	6
8	100695	COULTER SUPPORT BAR PAINTED	3
9	1-512-010005-13	NUT,HEX SLFLKG GRB 5/8-11	6
10	8-217-010070	WLDMT LONG RADIUS ROD	1
11	2-654-010003	RADIUS ROD SCREW LH WLDMT	1
12	0600-250-01250	ROLL PIN 1/4X1-1/4 LONG	2
13	1-298-010001-1	ZERK FITTING 1/4 SAE	2
14	2-360-010015	20 IN HANDLE RADIUS ROD 275	1
15	1-512-010011-19	NUT, HEX, ACORN 3/4-10, ZP	2
16	100823	NUT,HEX JAM,1-1/4-7 GR2	1
17	2-654-010002	SCREW-RADIUS ROD WLDMT	1
18	2-557-010054	PIN EXTENDED CYLINDER	1
19	1-557-010362-63	PIN,COTTER 1/4X2 ZP	4
20	2-557-010006	PIN RADIUS ROD LOWER	1
21	1-654-010061-19	SCREW,HX CP 3/4-10UNCX7 GR5	1
22	141246	BRACKET, HOSE HOLDER	1
23	103841	NUT,FLG,LNK,SERRATED 3/4-10UNC	2
24	141807	SCREW 3/8-16UNCX3-1/2 ALLTHRD	1
25	141247	CLAMP, HOSE HOLDER	1
26	141249	WING NUT, HOSE HOLDER	1
27	2-368-010287	HARNESS, STOR-A-WAY	1
28	1-654-010047-06	SCREW,HX CP 1/4-20UNCX1 GR5	2
29	1-512-010005-01	NUT,HEX,SLFLKG GRB 1/4-20	2
30	1-654-010125-21	SCREW,HX CP 1-8UNCX8 GR8 ZP (CAT V HITCHES USE 3 CAP SCREWS)	2
31	1-861-010032-24	WASHER FL 1IN NARROW ZP (CAT V HITCHES USE 9 FLAT WASHERS)	7
32	177031	HITCH, BALL CAT IV (SEE PAGE 2-5)	1
33	141433	SAFETY CHAIN 11,000LB	1
34	1-512-010005-19	NUT 1-8 HEX SLF-LOCKING GRB (CAT V HITCHES USE 3 LOCK NUTS)	2
35	1-512-010007-07	NUT, HEX 3/8-16 GR2 ZP	1

Jack Assembly

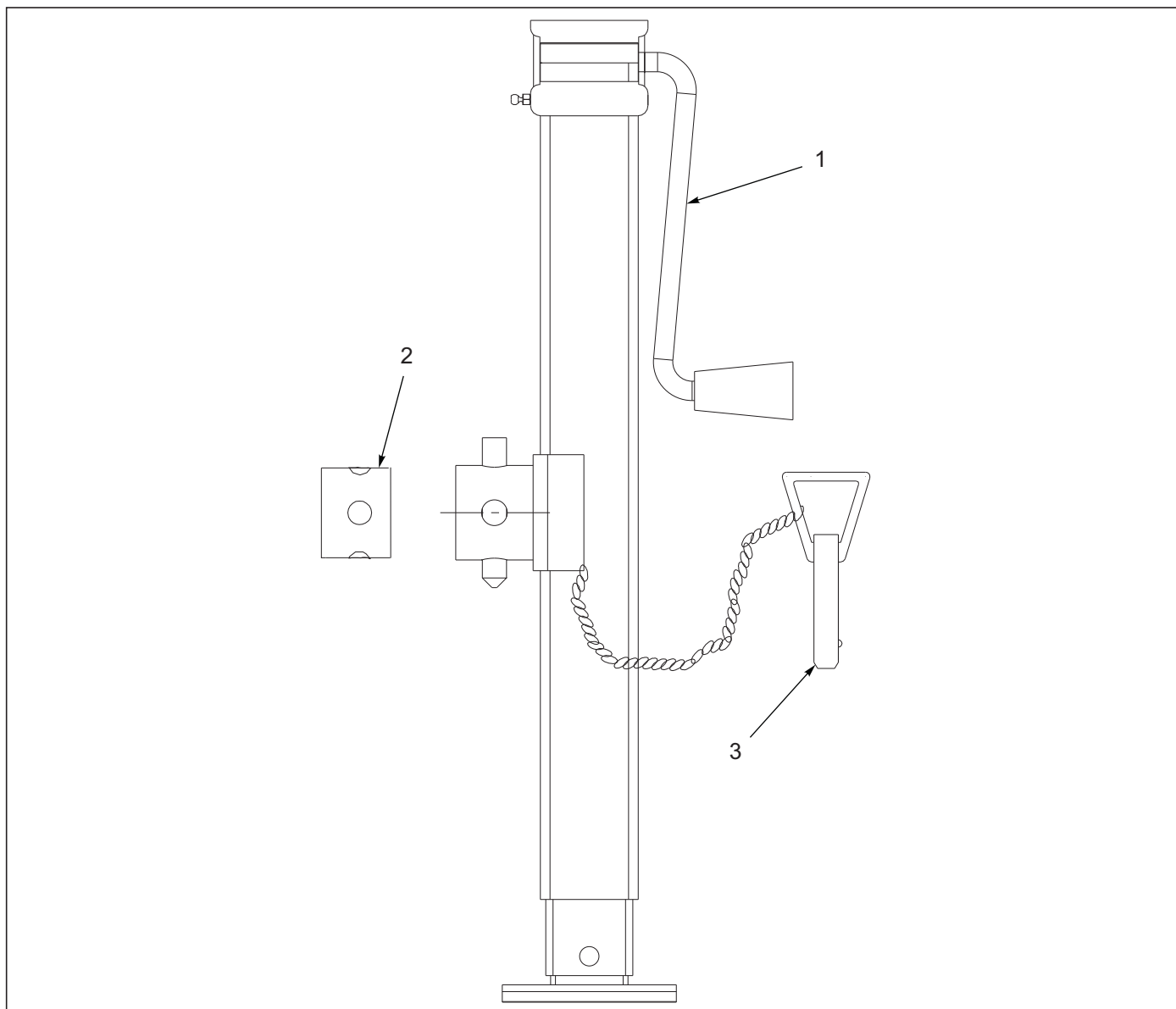


Figure 2-2: Jack Assembly

Jack Assembly

ITEM	PART NUMBER	DESCRIPTION	QTY.
--	140647	JACK, SIDE WIND 7000/8000 LB	
1	500171	HANDLE FOR JACK	1
2	141250	TUBE, RD, JACK MOUNT (WELD TO IMPLEMENT FRAME)	1
3	142194	5/8" PIN	1

Ball and Clevis Hitches

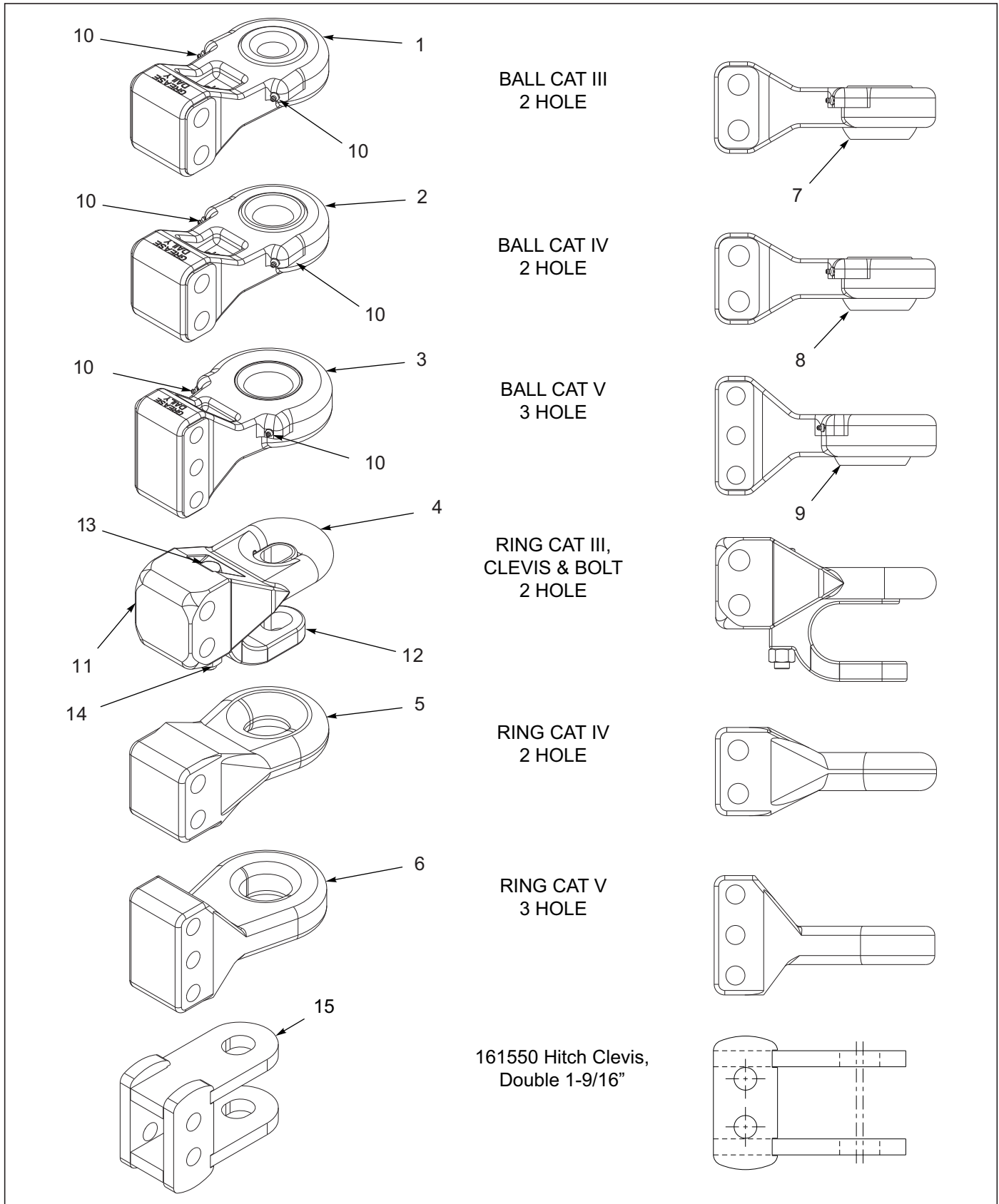


Figure 2-3: Ball and Clevis Hitches

TABLE OF CONTENTS

Ball and Clevis Hitches

ITEM	PART NUMBER	DESCRIPTION	QTY.
1	177030	HITCH, BALL CAT III (INCLUDES ITEM 10)	1
2	177031	HITCH, BALL CAT IV (INCLUDES ITEM 10)	1
3	177032	HITCH, BALL CAT V (INCLUDES ITEM 10)	1
4	100844	HITCH ASSY CAT III AND CLEVIS (INCLUDES ITEM 11-14)	1
5	2-375-010602	HITCH RING CAT IV	1
6	156949	HITCH, RING CAT V	1
7	189453	BUSHING, SPHERICAL 1-1/2 ID	1
7	189454	BUSHING, SPHERICAL 2 ID	1
8	189454	BUSHING, SPHERICAL 2 ID	1
8	189453	BUSHING, SPHERICAL 1-1/2 ID	1
9	189468	BUSHING, SPHERICAL 2-3/4 ID	1
9	189467	BUSHING, SPHERICAL 2 ID	1
10	1-298-010001-1	ZERK FITTING 1/4 SAE	2
11	2-375-010601	HITCH, RING CAT III	1
12	100214	CLEVIS, HITCH, PPI-208	1
13	1-654-010087-16	SCREW,HEX CAP,3/4-16X5.50 GR8	1
14	1-512-010008-12	NUT, HEX 3/4-16 UNF GRB	1
15	161550	HITCH CLEVIS DOUBLE 1-9/16 WLD	1

Disc Gang Assemblies

Disc Gang Assembly

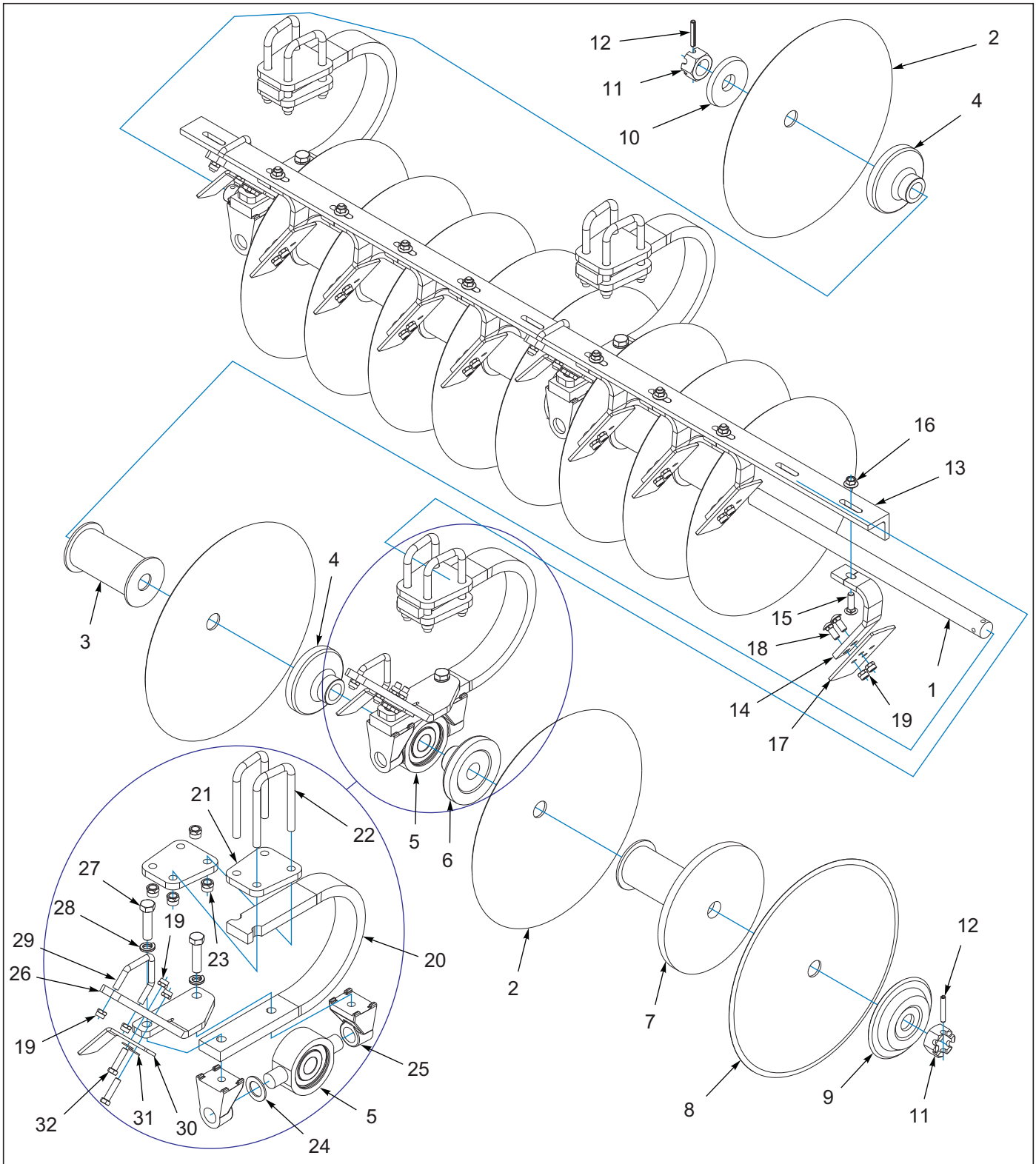


Figure 3-1: Disc Gang Assembly

TABLE OF CONTENTS

Disc Gang Assembly

ITEM	PART NUMBER	DESCRIPTION	QTY.		
--	256726	DISC ASSY, 877-10, TRUNNION	*		
--	256712	DISC ASSY, 877-13, TRUNNION		*	
--	254220	DISC ASSY, 877-15, TRUNNION			*
1	256731	SHAFT, GANG Ø1-1/2 X 66-1/2 L	2	--	--
1	8-253-010022	DISC ROD WING FRAME DISC 30FT	--	2	--
1	254258	SHAFT, GANG, Ø1-1/2 X 89-1/8 L	--	--	2
2	8-253-010002	DISC BLADE 20IN	16	20	22
3	8-253-010007	SPOOL ASSY DISC GANG WLDMT	10	12	14
4	8-253-010050	HALF SPOOL, CONVEX, 1.5 SHAFT	4	6	6
5	241002	BEARING ASSY, DISC Ø1.530 ID (SEE PAGE 3-7)	4	6	6
6	8-253-010049	HALF SPOOL, CONCAVE, 1.5 SHAFT	4	6	6
7	8-253-010010	SPOOL, OUTSIDE WLDMT	2	2	2
8	2-217-010031	COULTER BLADE	2	2	2
9	1-861-010006	SPRING WASHER DISC GANG	2	2	2
10	8-253-010012	HEAVY DISC WASHER	2	2	2
11	1-516-010001-27	NUT,HX SLOT 1-1/2-6 ZP	4	4	4
12	1-647-010004257	PIN,SPRING,SLOTTED 3/8X2-1/2	4	4	4
13	179768	SCRAPER BAR, 7-1/2 SP 8 HOLE	2	--	--
13	179770	SCRAPER BAR, 7-1/2 SP 10 HOLE	--	2	--
13	179771	SCRAPER BAR, 7-1/2 SP 11 HOLE	--	--	2
14	216129	ARM, SCRAPER	12	14	16
15	160161	SHAKER BOLT1/2-13X1-3/4 GR8ZP	12	14	16
16	172509	NUT,1/2-13 WIDE FLNG TOP LCK F	12	14	16
17	216130	SCRAPER, 4" REV	12	14	16
18	1-654-010070-02	SCREW 1/2-13X1-1/4 RD HD SQNK	24	28	32
19	1-512-010005-09	NUT,HEX,SLFLKG, 1/2-13 GRB	52	54	56
20	241004	SHANK, DISC BEARING, RIGHT	2	3	3
20	241003	SHANK, DISC BEARING, LEFT	2	3	3
21	241005	PLATE, DISC SHANK MOUNT	8	12	12
22	8-102-010043	U-BOLT, SPRING CLAMP	8	12	12
23	1-512-010005-13	NUT,HEX SLFLKG GRB 5/8-11	16	24	24
24	140480	WASHER, TRUNNION	4	6	6
25	140479	MOUNT, TRUNNION	8	12	12
26	241007	RH MOUNT, SCRAPER BAR	2	3	3
26	241006	LH MOUNT, SCRAPER BAR	2	3	3
27	1-654-010032-09	SCREW HEX CAP 3/4-10X3 GR8	8	12	12
28	1-861-010034-17	WASHER,LKG,HLCL SPR,3/4	8	12	12
29	140487	UBOLT, SCRAPER BAR MOUNT	4	6	6
30	216134	SCRAPER, DUAL RH	2	3	3
30	216135	SCRAPER, DUAL LH	2	3	3
31	1-861-010032-14	WASHER, FLAT 1/2" N ZP/CD	8	12	12
32	1-654-010055-05	SCREW,HEX CAP,1/2-13UNCX2 GR5	8	12	12

Disc Gang Placement

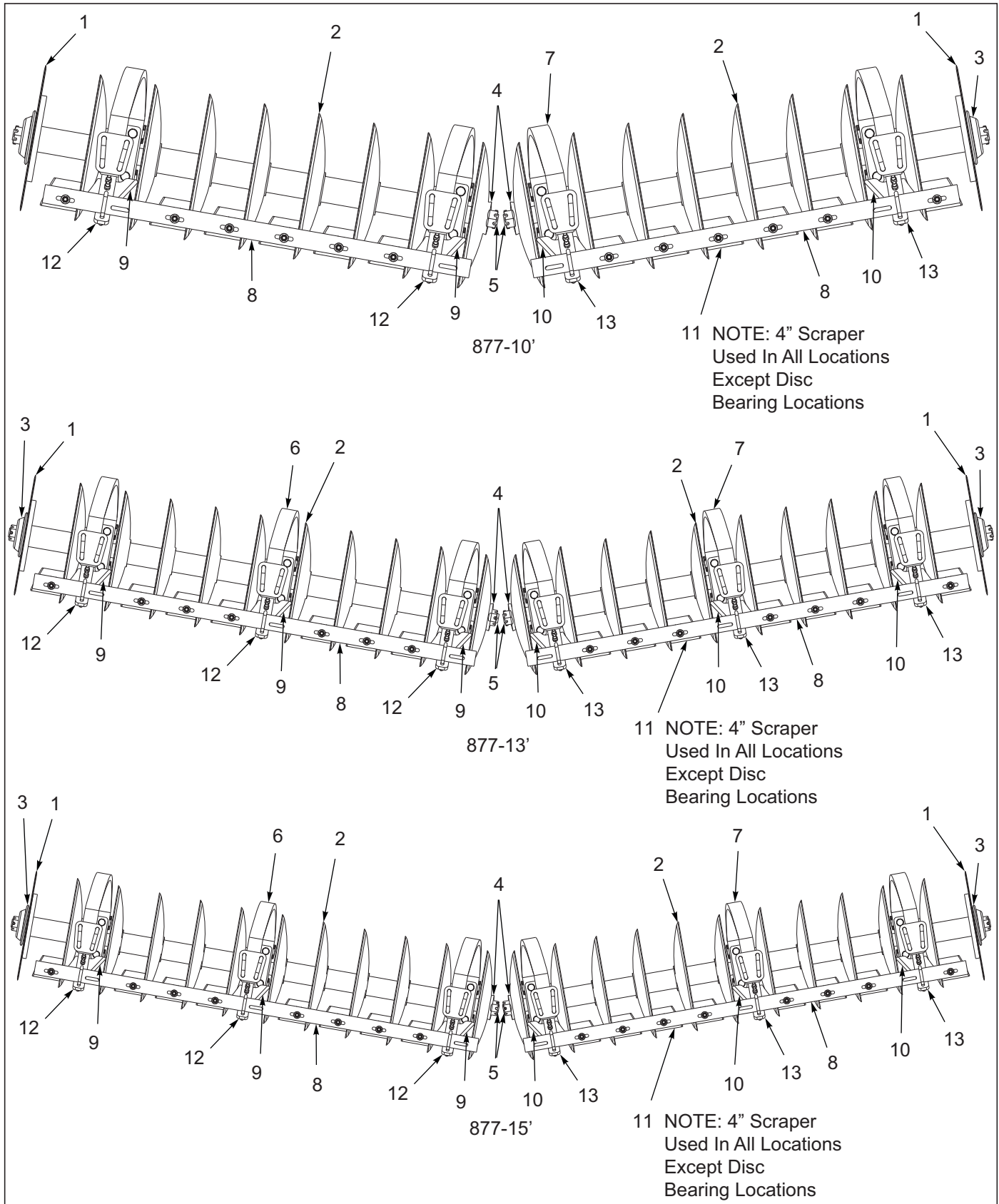


Figure 3-2: Disc Gang Placement

TABLE OF CONTENTS

Disc Gang Placement

ITEM	PART NUMBER	DESCRIPTION	QTY.		
--	256726	DISC ASSY, 877-10, TRUNNION	*		
--	256712	DISC ASSY, 877-13, TRUNNION		*	
--	254220	DISC ASSY, 877-15, TRUNNION			*
1	2-217-010031	COULTER BLADE	2	2	2
2	8-253-010002	DISC BLADE 20IN	16	20	22
3	1-861-010006	SPRING WASHER DISC GANG	2	2	2
4	8-253-010012	HEAVY DISC WASHER	2	2	2
5	256731	SHAFT, GANG Ø1-1/2 X 66-1/2 L	2	--	--
5	8-253-010022	DISC ROD WING FRAME DISC 30FT	--	2	--
5	254258	SHAFT, GANG, Ø1-1/2 X 89-1/8 L	--	--	2
6	241003	SHANK, DISC BEARING, LEFT	2	3	3
7	241004	SHANK, DISC BEARING, RIGHT	2	3	3
8	179768	SCRAPER BAR, 7-1/2 SP 8 HOLE	2	--	--
8	179770	SCRAPER BAR, 7-1/2 SP 10 HOLE	--	2	--
8	179771	SCRAPER BAR, 7-1/2 SP 11 HOLE	--	--	2
9	216135	SCRAPER, DUAL LH	2	3	3
10	216134	SCRAPER, DUAL RH	2	3	3
11	216130	SCRAPER, 4" REV	12	14	16
12	241006	LH MOUNT, SCRAPER BAR	2	3	3
13	241007	RH MOUNT, SCRAPER BAR	2	3	3

Disc Gang & Shield Assembly

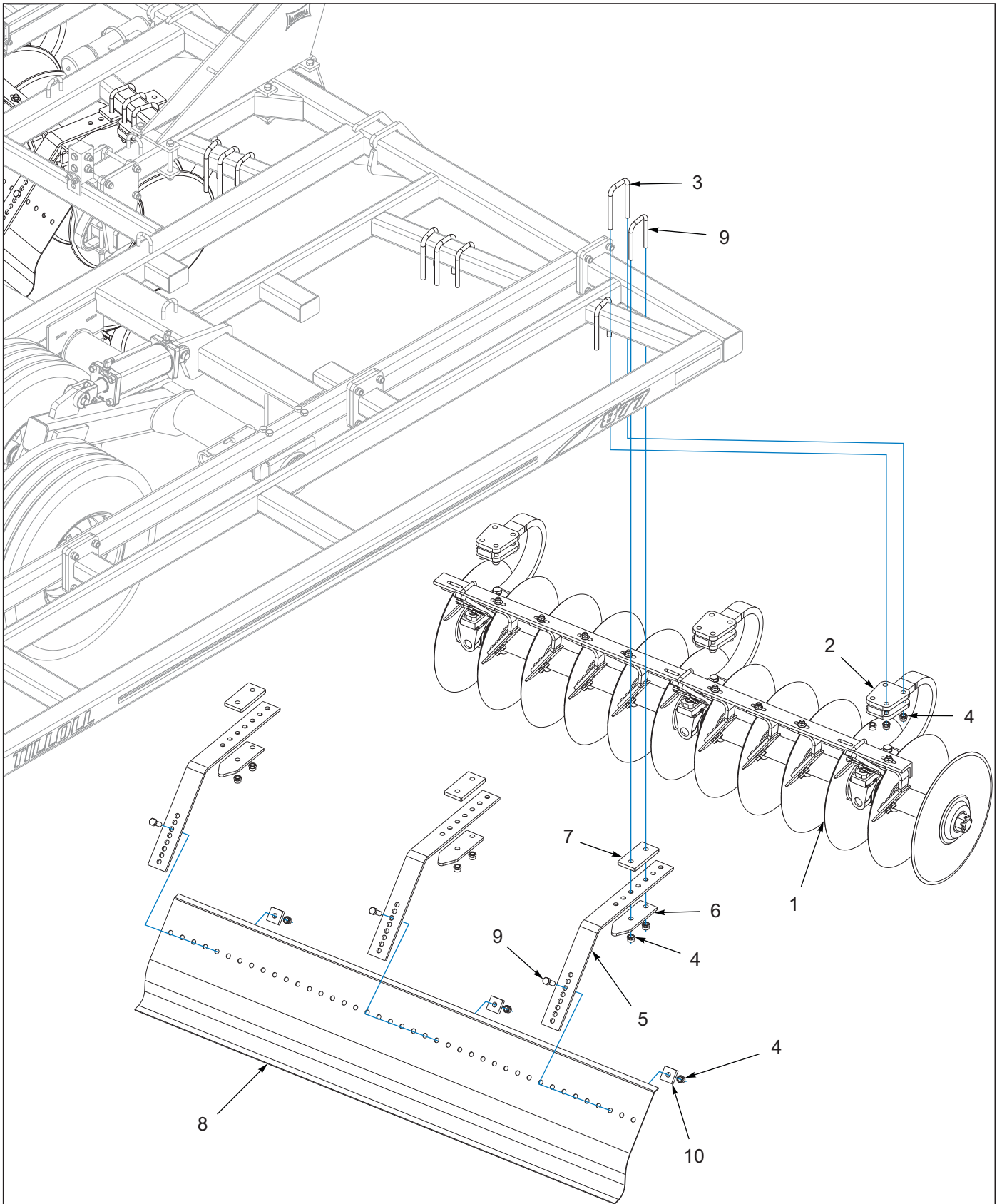


Figure 3-3: Disc Gang & Shield Assembly

TABLE OF CONTENTS

Disc Gang & Shield Assembly

ITEM	PART NUMBER	DESCRIPTION	QTY.		
--	-----	DISC GANG & SHIELD ASSEMBLY 877-10'	*		
--	-----	DISC GANG & SHIELD ASSEMBLY 877-13'	*		
--	-----	DISC GANG & SHIELD ASSEMBLY 877-15'	*		
1	-----	DISC GANG ASSEMBLY (SEE PAGE 3-1)			
2	241005	PLATE, DISC SHANK MOUNT	8	12	12
3	8-102-010043	U-BOLT, SPRING CLAMP	8	12	12
4	1-512-010005-13	NUT,HEX SLFLKG GRB 5/8-11	24	42	42
5	8-681-010008	ADJ BRACKET SPRAY SHIELD 875	4	6	6
6	218908	SUPT PLATE, SHIELD BRKT	4	6	6
7	218910	PLATE, SPRAY SHIELD BRKT	4	6	6
8	256730	SPRAY SHIELD, 61" LONG	2	--	--
8	8-681-010009	SPRAY SHIELD, 76" LONG	--	2	--
8	8-681-010011	SPRAY SHIELD 83 IN 875	--	--	2
9	8-102-010023	U-BOLT SPRING CLAMP 1400	4	6	6
10	8-681-010010	BACKUP PLATE	4	6	6

Disc Bearing Assembly

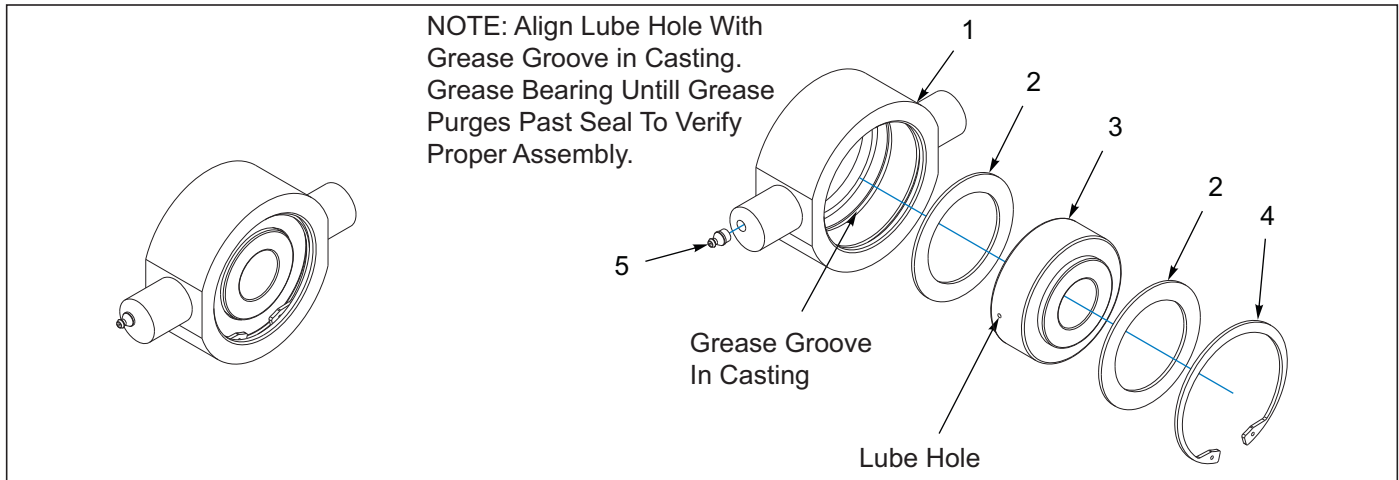


Figure 3-4: Disc Bearing Assembly

Disc Bearing Assembly

ITEM	PART NUMBER	DESCRIPTION	QTY.
--	241002	BEARING ASSY, DISC Ø1.530 ID	
1	140475	CASTING, TRUNNION	1
2	140473	WASHER, BEARING	1
3	241001	BEARING, DISC Ø1.530 ID	1
4	140476	INTERNAL RETAINING RING	1
5	5000	ZERK FITTING 1/8NPT	1

Shank Assemblies

Spring Shank Assembly

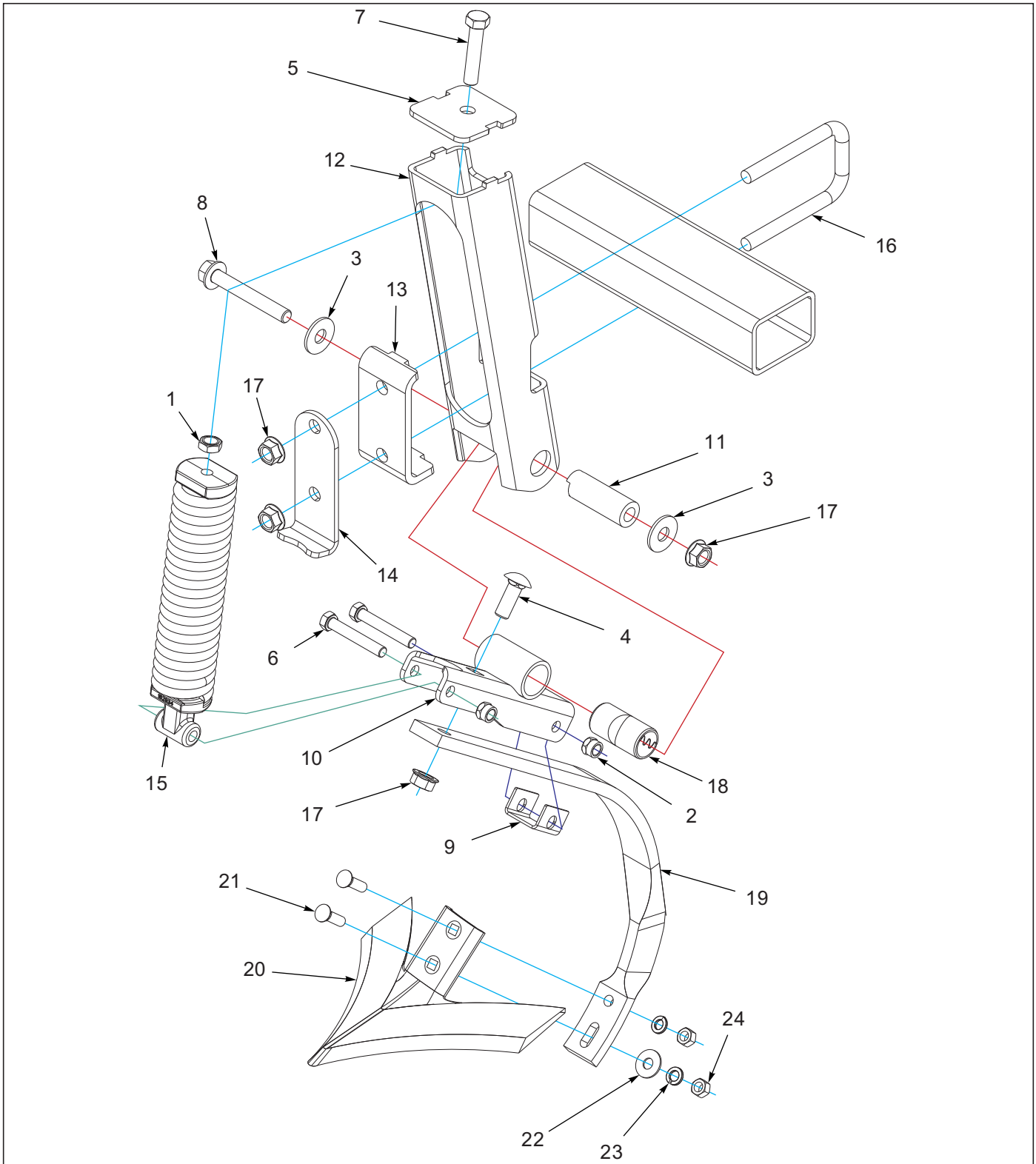


Figure 4-1: Spring Shank Assembly

TABLE OF CONTENTS

Spring Shank Assembly

ITEM	PART NUMBER	DESCRIPTION	QTY.
--	225540	SHANK ASSY, SPRING, 3 X 4 TUBE	
1	1-511-010001-07	NUT, HEX JAM 5/8-11	1
2	1-512-010005-09	NUT,HEX,SLFLKG, 1/2-13 GRB	2
3	1-861-010032-19	WASHER, FLAT 5/8 W ZP/CD	2
4	133662	SCRW RDHD SHT SQNK5/8-11X1.75	1
5	162906	PLATE, SPRING	1
6	164146	SCREW, HEX CAP 1/2-13X3-1/4	2
7	164147	SCREW HX CAP5/8-11X3 2-1/2THD	1
8	164192	SCREW 5/8-11UNCX4-1/2 FLG HD	1
9	166160	CLAMP, SHANK	1
10	172667	CLAMP, SHANK	1
11	172671	BUSHING, CLAMP	1
12	225541	SQ TUBE, SHANK MOUNT	1
13	225542	CLAMP, SHANK MOUNT	1
14	225543	STOP, SHANK MOUNT	1
15	225544	SPRING ASSY, 13-1/8 EXTENSION	1
16	229555	U-BOLT, 5/8 X 3-11/16 X 5-3/4	1
17	29SFFL 5811	NUT,FLANGE HEAD LOCK5/8-11UNC	4
18	172672	BUSHING 1-1/2 X 1-1/4 X2-15/16	1
19	2-683-010079	SHANK "C" EDGE BENT	1
20	2-689-010057	SWEEP 1/4X10 ULTRAWING	1
20	8-689-010009	SWEEP 10 IN 810-800A	1
21	7/16-14X1-1/2PW	PLOW BOLT ZP GR5	2
22	1-861-010032-13	WASHER FLAT 7/16	1
23	1-861-010034-12	WASHER,LOCKING HLC SPG 7/16	2
24	1-512-010007-08	NUT, HEX 7/16-14 GR2 ZP	2

Center Shank Mount Assembly

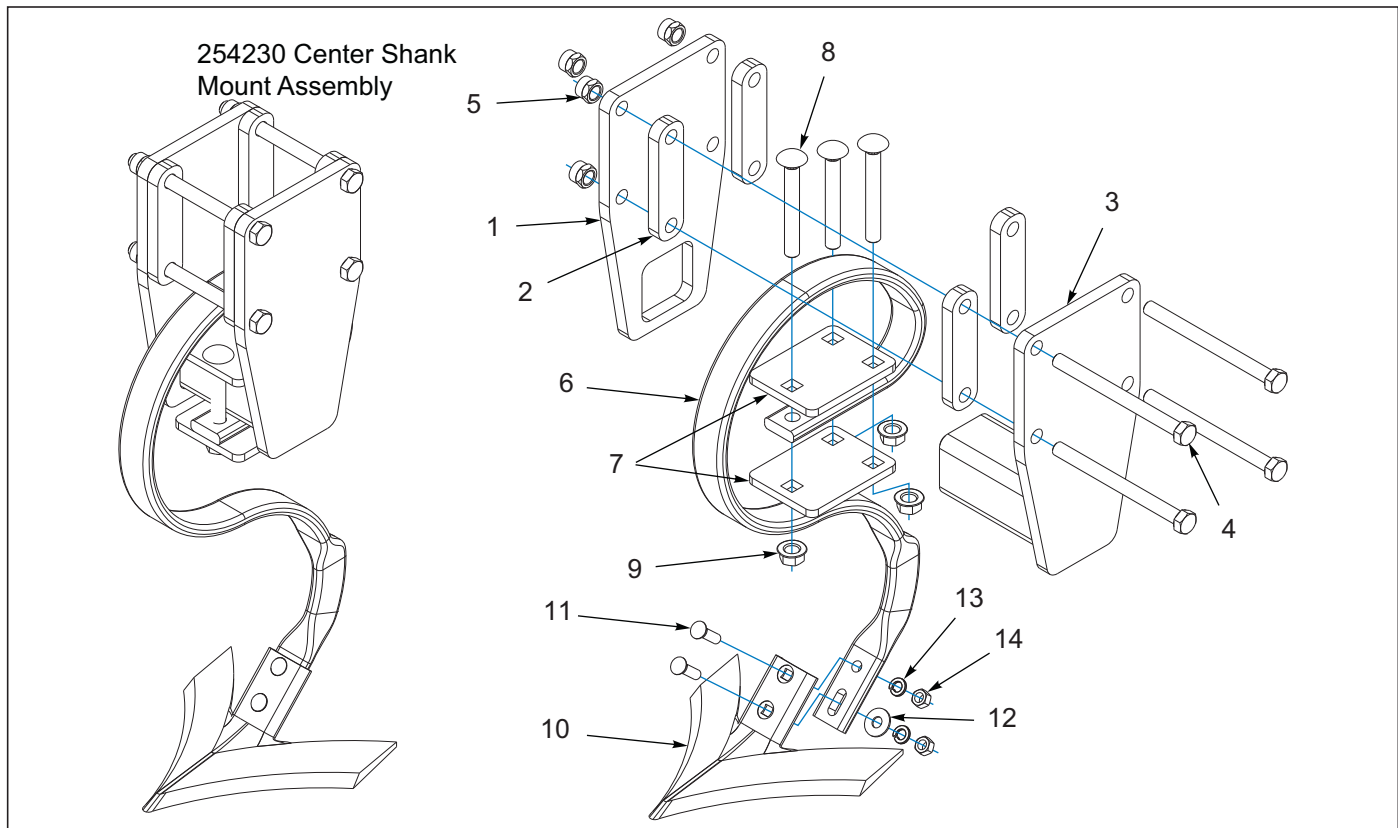


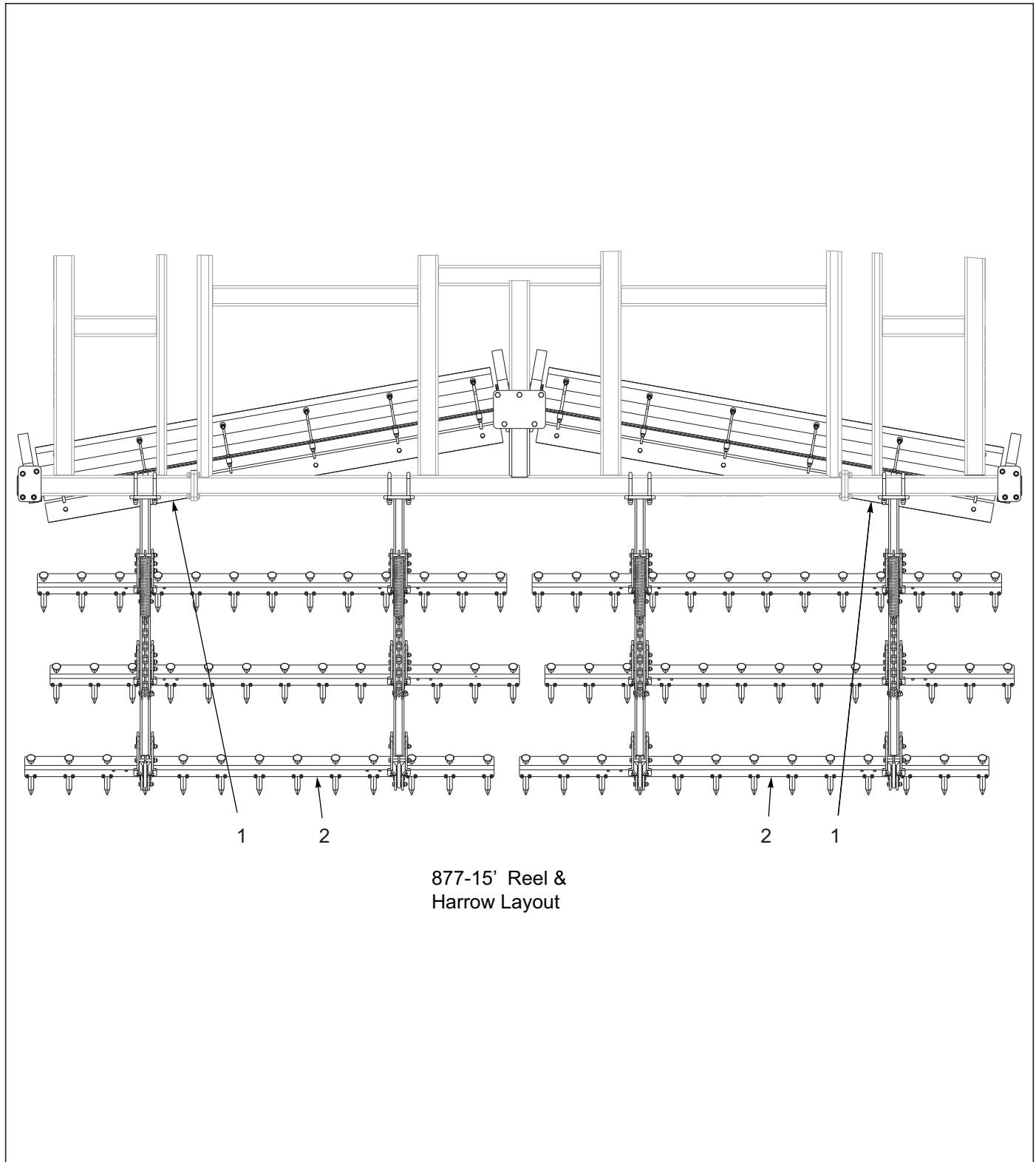
Figure 4-2: Center Shank Mount Assembly

Center Shank Mount Assembly

ITEM	PART NUMBER	DESCRIPTION	QTY.
--	254230	ASSY, CTR SHANK MNT, 4" TUBE	
1	237197	PLATE, CTR SHANK MNT	1
2	254263	SPACER, CTR SHANK MNT, 5/8"	4
3	237196	WLDMT, CTR SHANK MNT	1
4	123096	SCREW,HX CP 5/8-11UNCX7.50GR5	4
5	1-512-010005-13	NUT,HEX SLFLKG GRB 5/8-11	4
6	247576	S-TINE, EDGE BENT,9/16 X 1-3/4	1
7	2-565-010062	PLATE 3 HOLE	2
8	1-654-010126-15	SCREW,RD HD SQNCK 5/8-11 X 5	3
9	29SFFL 5811	NUT,FLANGE HEAD LOCK5/8-11UNC	3
10	2-689-010057	SWEEP 1/4X10 ULTRAWING	1
11	7/16-14X1-1/2PW	BOLT,PLOW,7/16X1-1/2 GR5 ZP	2
12	1-861-010032-13	WASHER FLAT 7/16	1
13	1-861-010034-12	WASHER,LOCKING HLC SPG 7/16	2
14	1-512-010007-08	NUT, HEX 7/16-14 GR2 ZP	2

Reel and Harrow Assemblies

Reel & Harrow Layout



877-15' Reel & Harrow Layout

Figure 5-1: Reel & Harrow Layout

Reel & Harrow Layout

ITEM	PART NUMBER	DESCRIPTION	QTY.
--	-----	REEL & HARROW LAYOUT 877-15'	
1	218872	ASSY, CHOPPER REEL 91" (SEE PAGE 5-3)	2
2	8-370-010012	HARROW 92-1/2 IN (SEE PAGE 5-7)	6

Reel Assembly

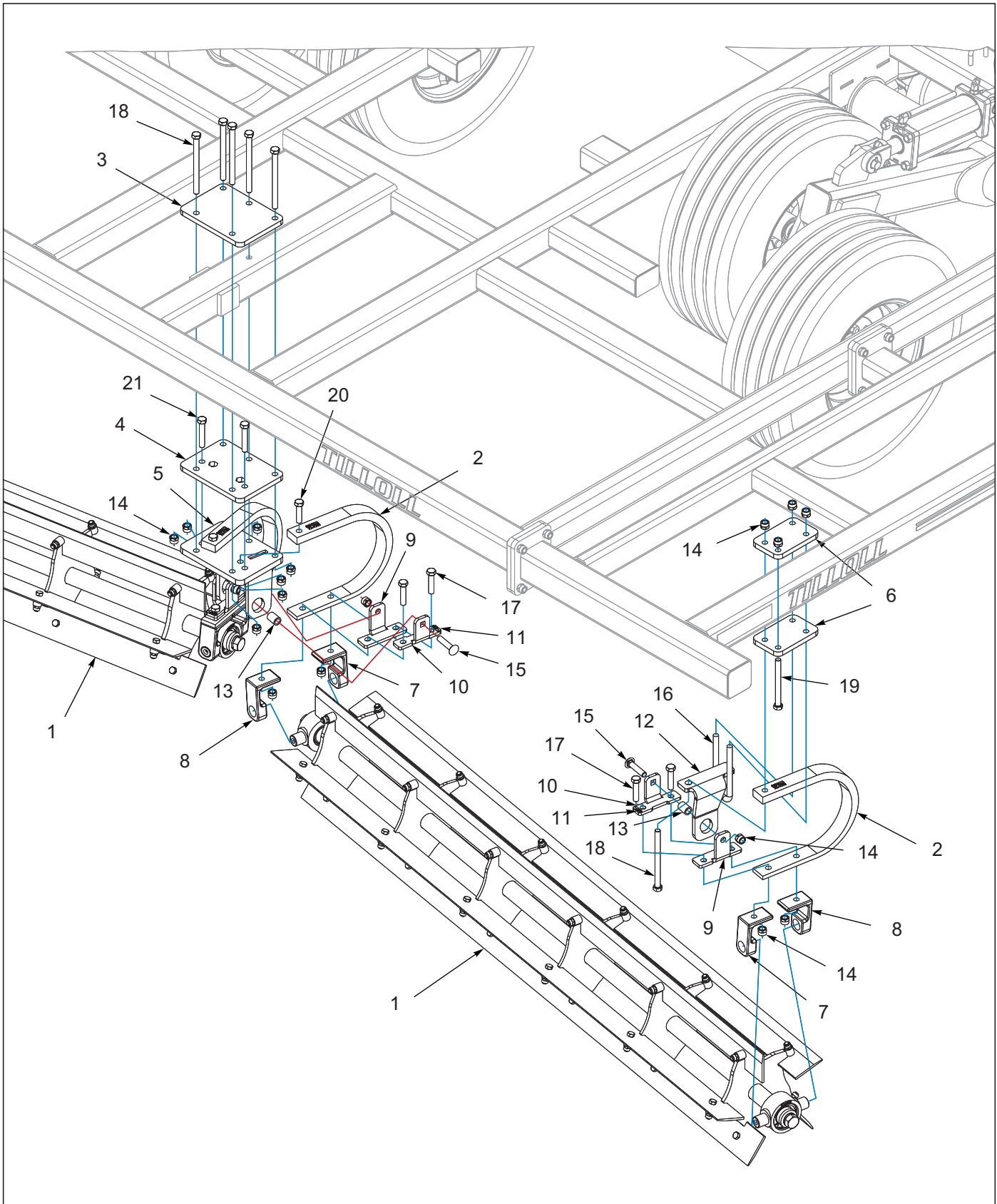


Figure 5-2: Reel Assembly

TABLE OF CONTENTS

Reel Assembly

ITEM	PART NUMBER	DESCRIPTION	QTY.
1	254213	ASSY, CHOPPER REEL 64" (USED ON MODEL 877-10') (SEE PAGE 5-5)	1
1	218873	ASSY, CHOPPER REEL 82" (USED ON MODEL 877-13') (SEE PAGE 5-5)	1
1	218872	ASSY, CHOPPER REEL 91" (USED ON MODEL 877-15') (SEE PAGE 5-5)	1
2	8-683-010023	TAPER SPRING SHANK REEL	4
3	218907	PLATE, CTR REEL BRKT	1
4	256735	PLATE, REEL BRKT SPACER	1
5	218904	WLDMT, CTR REEL BRKT	1
6	8-622-010003	SHANK MOUNT REEL	4
7	136509	HANGER, LH, REEL	4
8	136510	HANGER, RH, REEL	4
9	135442	BRACKET OUTER BOTTOM REEL	4
10	135443	BRACKET INNER BOTTOM REEL	4
11	2-573-010330-01	DECAL, LUBRICATION 5 HOURS	4
12	135439	BRACKET TOP REEL GUARD	2
13	RRT159	TUBE RD 1 X 11/16 1.41	4
14	1-512-010005-13	NUT,HEX SLFLKG GRB 5/8-11	32
15	164861	SCREW,RD HD SQNCK 5/8-11X3	4
16	8-102-010020	U BOLT REEL MOUNT	2
17	1-654-010059-08	SCREW HX CP 5/8-11UNCX2-3/4G5	8
18	1-654-010059-21	SCREW,HEX CAP,5/8-11UNCX8 GR5	7
19	107-0018	HHCS 5/8-11X6-1/2LG GR5	2
20	1-654-010059-07	SCREW HX CP 5/8-11UNCX2-1/2G5	2
21	1-654-010059-11	SCREW,HX CP 5/8-11UNCX3.5GR5	2

Chopper Reel Assembly

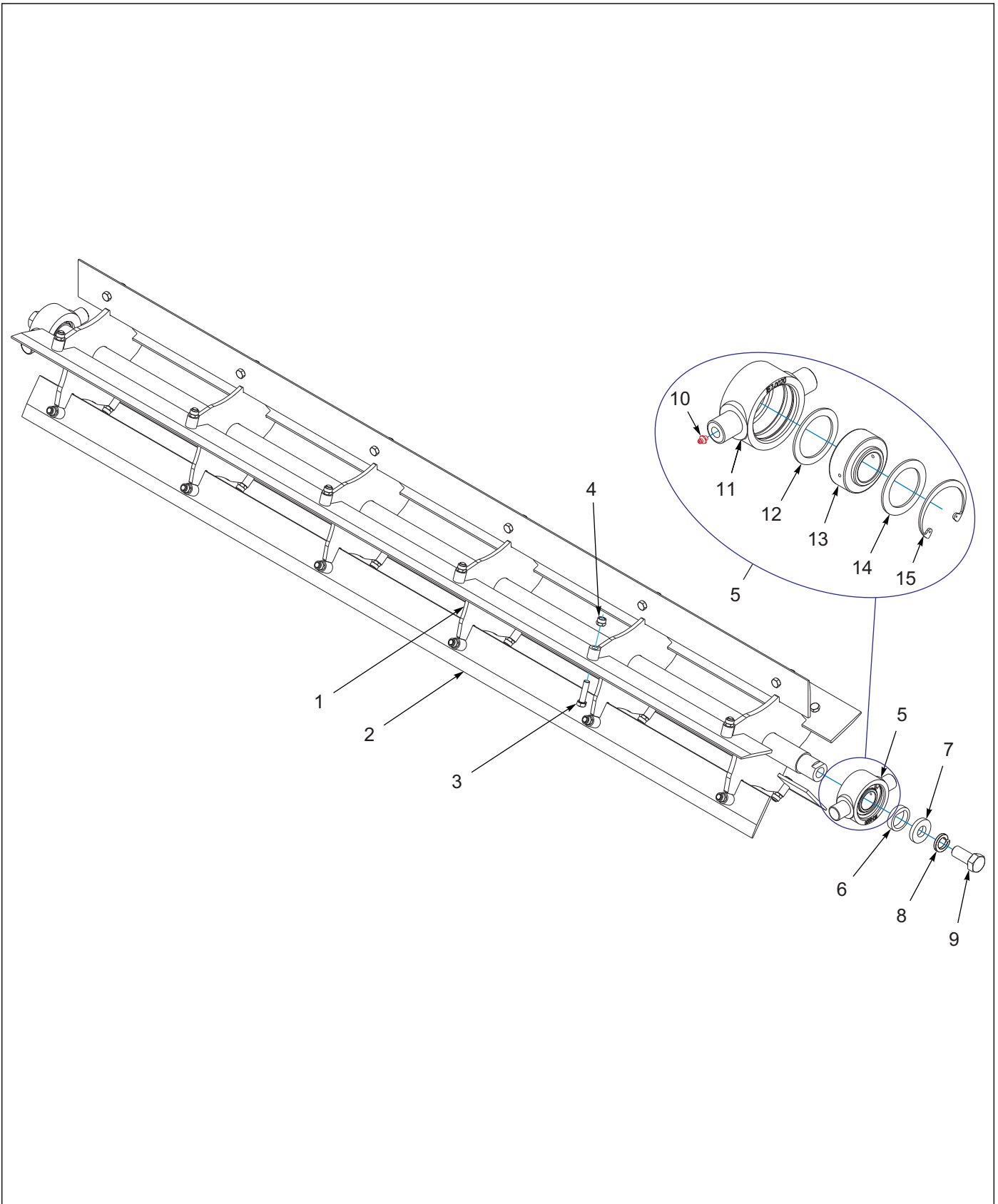


Figure 5-3: Chopper Reel Assembly

TABLE OF CONTENTS

Chopper Reel Assembly

ITEM	PART NUMBER	DESCRIPTION	QTY.		
--	254213	ASSY, CHOPPER REEL 64"	*		
--	218873	ASSY, CHOPPER REEL 82"		*	
--	218872	ASSY, CHOPPER REEL 91"			*
1	254215	REEL WLDMT, 64" BLADE	1	--	--
1	218894	REEL WLDMT, 82" BLADE	--	1	--
1	218893	REEL WLDMT, 91" BLADE	--	--	1
2	8-622-010016	BLADE REEL 64 IN	5	--	--
2	8-622-010007	BLADE REEL 82 IN	--	5	--
2	8-622-010012	REEL BLADE 91 IN	--	--	5
3	1-654-010055-05	SCREW,HEX CAP,1/2-13UNCX2 GR5	25	30	30
4	1-512-010005-09	NUT,HEX,SLFLKG, 1/2-13 GRB	25	30	30
5	218899	BEARING ASSY,Ø1.75 ID TRUNNION (INCLUDES ITEMS 10-15)	2	2	2
6	218902	WASHER, FLAT TOP	2	2	2
7	218901	WASHER, 3/8	2	2	2
8	1-861-010034-21	WASHER, LKG HEL SPRG 1IN	2	2	2
9	137943	SCREW,HEX CAP 1-8UNCX2-1/4GR5	2	2	2
10	1-298-010001-1	ZERK FITTING 1/4 SAE	2	2	2
11	1-065-010013	BEARING HOUSING TRUNNION MT	2	2	2
12	8-861-010008	WASHER FLAT	2	2	2
13	218900	BEARING,Ø1.75 CYLIN,W/O COLLAR	2	2	2
14	8-861-010009	WASHER FLAT	2	2	2
15	8-630-010001	RING RETAINING	2	2	2

Harrow Assembly

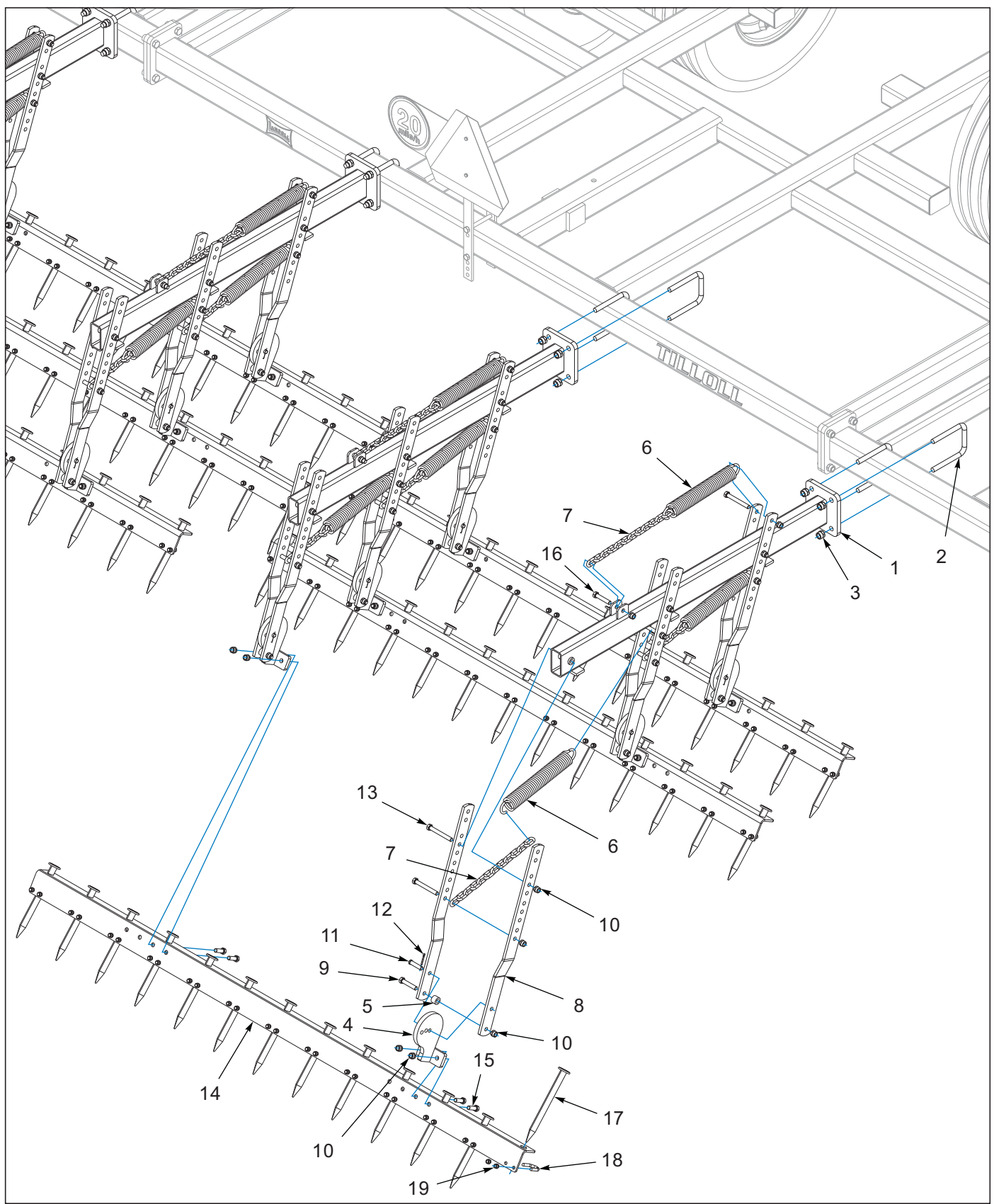


Figure 5-4: Harrow Assembly

TABLE OF CONTENTS

Harrow Assembly

ITEM	PART NUMBER	DESCRIPTION	QTY.
--	-----	HARROW ASSEMBLY 877-15' (SEE 5-1 FOR PROPER PLACEMENT)	
1	151029	HANGER ARM, HARROW, EXT WLDMT	4
2	6-102-010009	U-BOLT RIGID GA WHEEL	8
3	1-512-010005-13	NUT,HEX SLFLKG GRB 5/8-11	16
4	8-370-010008	HARROW ADJ BRACKET WLDMT	4
5	RRT128X.75	TUBE RD 1X9/16X3/4 CDBW	4
6	8-720-010011	HARROW SPRING	12
7	229587	CHAIN, 5/16 PROOF COIL,12 LINK	12
8	8-370-010007	HARROW ADJUSTMENT ARM	16
9	1-654-010055-07	SCREW HX CP 1/2-13UNCX2-1/2	4
10	1-512-010005-09	NUT,HEX,SLFLKG, 1/2-13 GRB40	12
11	0800-0500-02000	PIN CLEVIS 1/2X2	4
12	1-557-010362-40	PIN, COTTER 5/32X1-1/4	4
13	1-654-010055-13	SCREW,HEX CAP,1/2-13UNCX4 GR5	8
14	8-370-010012	HARROW 92-1/2 IN	6
15	1-654-010055-03	SCREW,HEX CAP,1/2-13UNCX1-1/2	8
16	1-654-010055-07	SCREW HX CP 1/2-13UNCX2-1/2	4
17	8-370-010001	TEETH,HARROW 3/4 SQ 11H	78
18	8-102-010017	U-BOLT HARROW SPIKE	78
19	1-512-010005-05	NUT, HEX, SLFLKG GRB 3/8-16	156

Hydraulics

Hydraulic Assembly Lift

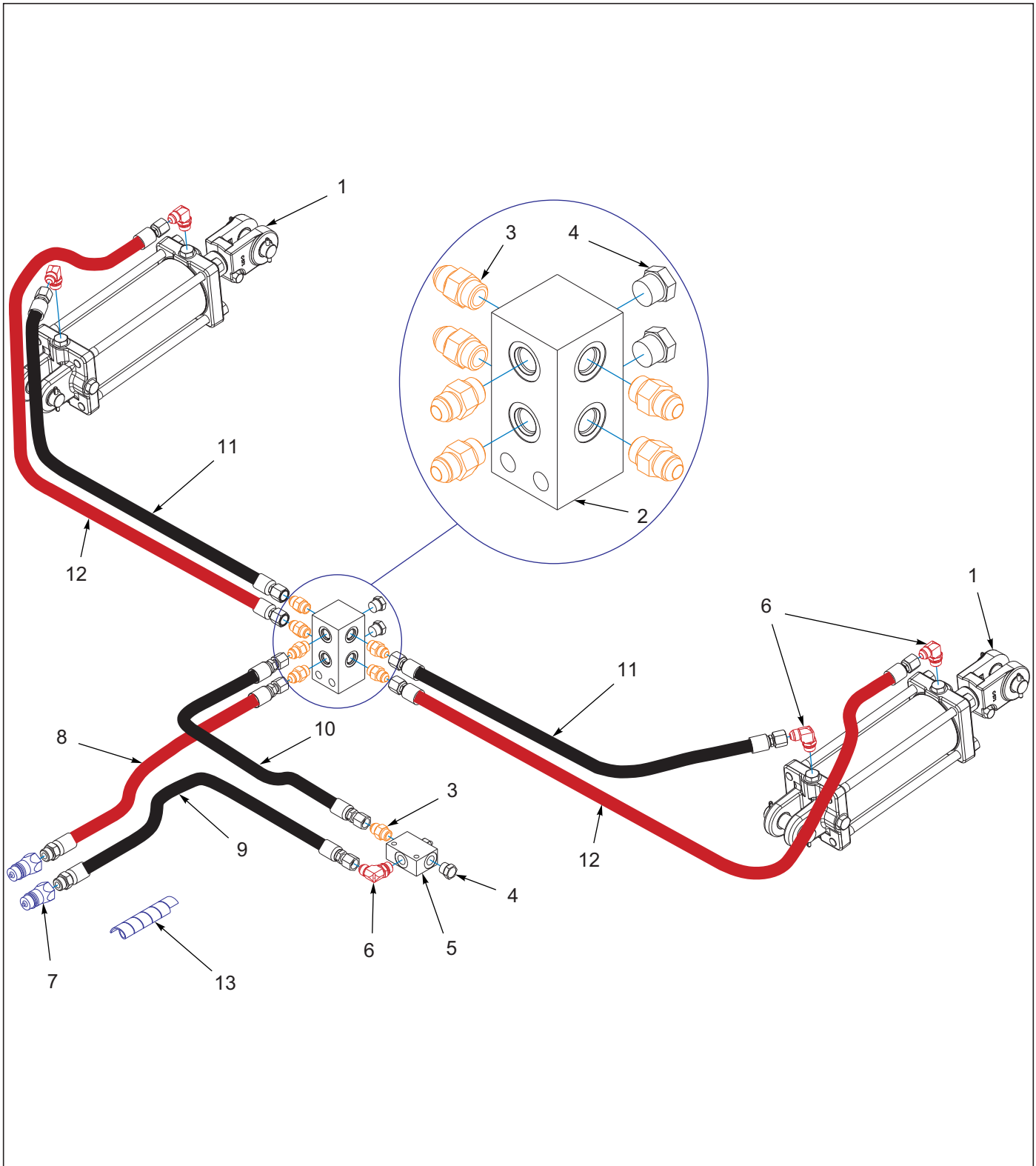


Figure 6-1: Hydraulic Assembly Lift

Hydraulic Assembly Lift

ITEM	PART NUMBER	DESCRIPTION	QTY.
1	148387	CYLINDER HYDRAULIC 4 X 8 (SEE PAGE 7-1)	2
2	2-474-010022	MANIFOLD HYDRAULIC, 8 HOSE	1
3	202702-8-8S	ADAPTER #8 O-RING TO #8 TUBE	7
4	1-007-010025	PLUG, 3/4-16 O-RING BOSS	3
5	185660	VALVE, LIMIT	1
6	2062-8-8S	ADAPTER, 90°, #8 O-RING-TUBE	5
7	141828	COUPLER,MALE 3/4-16 O-RING	2
8	186237	HOSE 1/2X195 #8JIC X #8OR	1
9	167555	HOSE ASSY 1/2X210#8JICXO-RING	1
10	1403982	HOSE ASSY 1/2X38,SAE37,STR-STR	1
11	1-397-010369054	HOSE ASSY 3/8X54 #8 JIC SWVL	2
12	208813	HOSE ASSY, 3/8X68,-8FJX,-8FJX	2
13	155528	HOSE WRAP, BLUE 1" ID X 8"	1

Cylinders

Cylinder Assembly 4 x 8

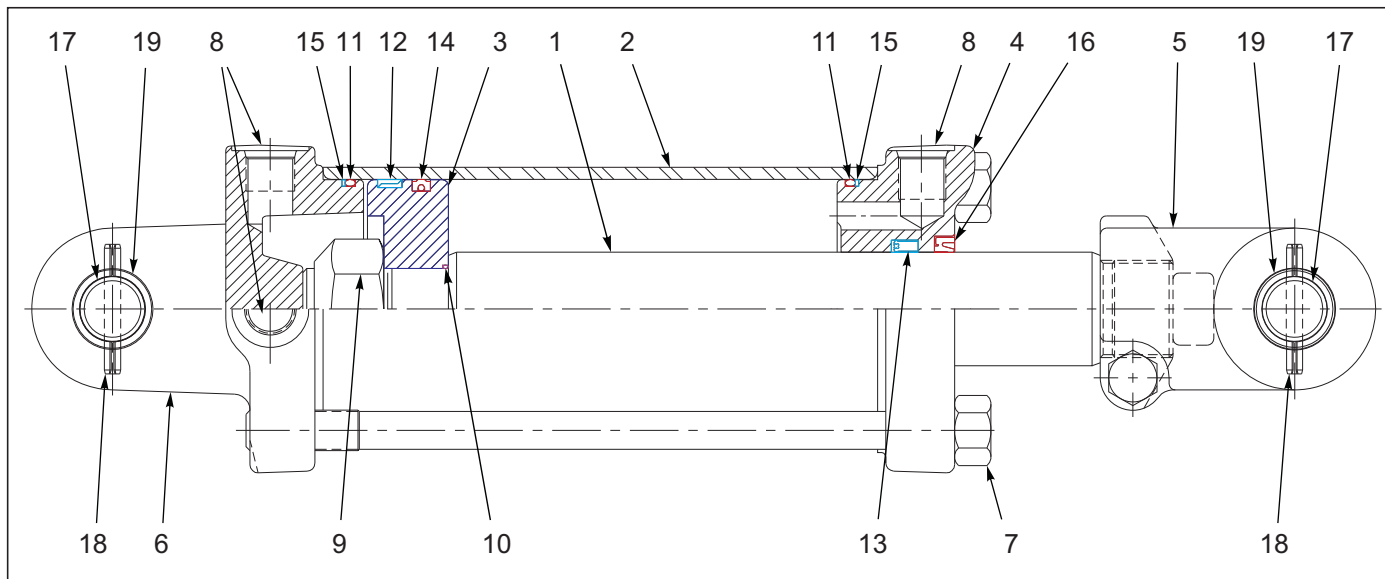


Figure 7-1: Cylinder Assembly 4 x 8

Cylinder Assembly 4 x 8







ITEM	PART NUMBER	DESCRIPTION	QTY.
--	148387	CYLINDER, HYDRAULIC 4 X 8	
1	-----	PISTON ROD	1
2	-----	TUBE	1
3	-----	PISTON	1
4	147376	GLAND	1
5	149858	CLEVIS	1
6	142114	BUTT	1
7	-----	TIEROD ASSEMBLY	4
8	-----	PORT PLUG	3
9	-----	LOCK NUT	1
10	-----	O-RING	1
11	-----	O-RING	2
12	-----	BEARING RING	1
13	-----	U-CUP	1
14	-----	CROWN SEAL	1
15	-----	BU-WASHER	2
16	-----	WIPER	1
17	143994	CLEVIS PIN	2
18	111789	ROLL PIN	4
19	142112	BUSHING	4
20	152640	SEAL KIT (NOT SHOWN) (INCLUDES ITEMS 10 - 16)	

Electrical

Electrical Assembly W/LED Lights Wiring Chart

7-PIN CONN.	4-PIN TOWER	CIRCUIT	WIRE COLOR
1	D	GROUND	WHITE 
2	-	WORK LAMPS	BLACK 
3	B	LEFT FLASHING & TURN	YELLOW 
4	-	STOP LAMPS	RED 
5	A	RIGHT FLASHING & TURN	GREEN 
6	C	TAIL LAMPS	BROWN 
7	-	SWITCHED POWER (12 V)	BLUE 

MAIN WARNING LIGHT HARNESS - WIRING CHART
 (NOTE: The Color Of The Wire Jacket Does Not Necessarily Match The Color Of The 7 Pin Connector)

	RIGHT AMBER	RIGHT RED		LEFT RED	LEFT AMBER
	2-PIN TOWER	3-PIN TOWER	6-PIN SHROUD	3-PIN TOWER	2-PIN TOWER
 BLACK LEFT TURN			A	C	
 WHITE GROUND	A	A	B	A	A
 BROWN TAIL LIGHT		B	C	B	
 YELLOW LEFT TURN			D		B
 GREEN RIGHT TURN	B		E		
 RED RIGHT TURN		C	F		

REAR WARNING LIGHT HARNESS - WIRING CHART

Figure 8-1: Electrical Assembly W/LED Lights Wiring Chart

Electrical Assembly W/LED Lights

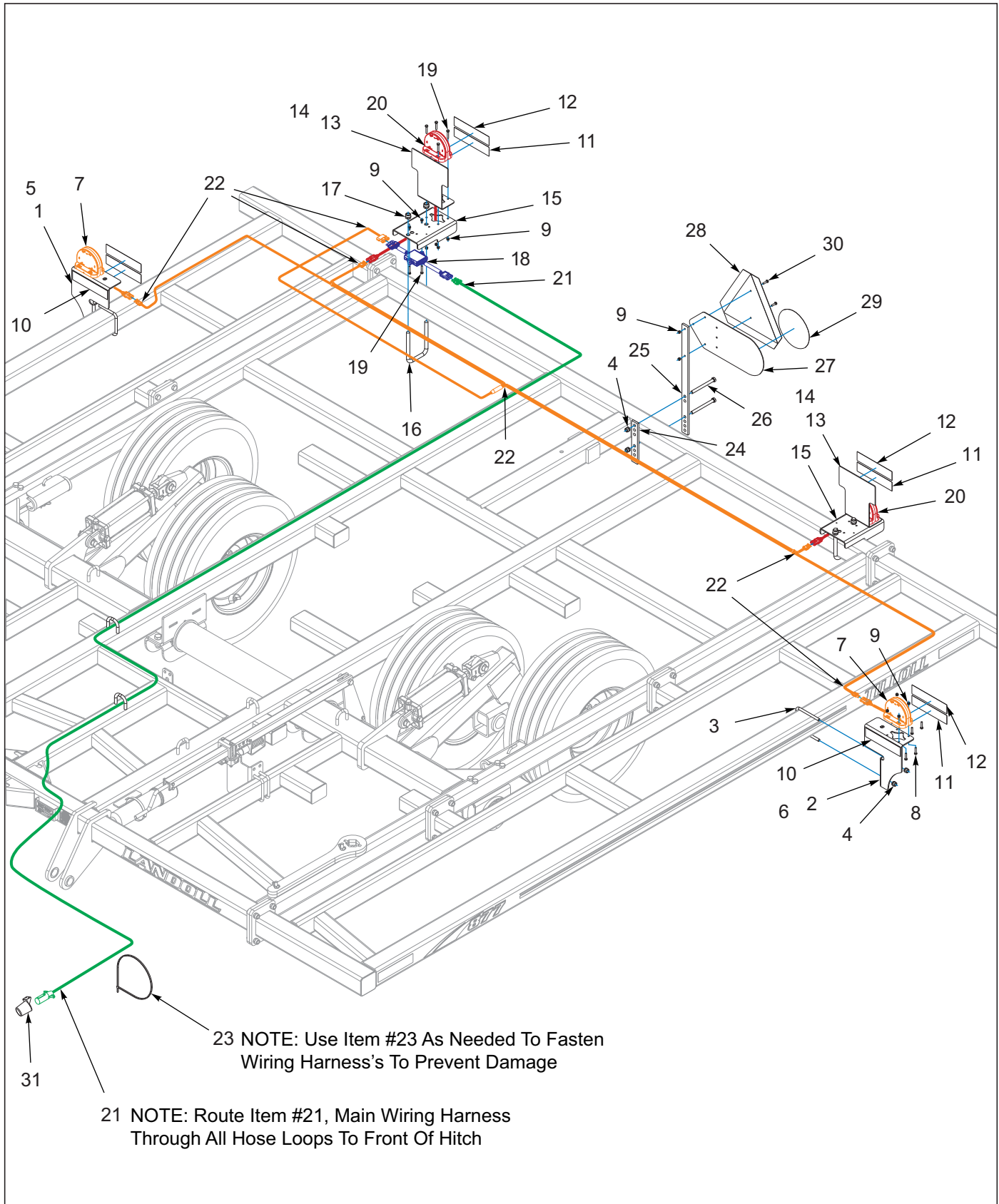


Figure 8-2: Electrical Assembly W/LED Lights

TABLE OF CONTENTS

Electrical Assembly W/LED Lights

ITEM	PART NUMBER	DESCRIPTION	QTY.
--	254231	LED LIGHT KIT, 877 RIGID	
1	254259	LIGHT ASSY, RH LED AMBER (INCLUDES ITEMS 5, 7-12)	1
2	254260	LIGHT ASSY, LH LED AMBER (INCLUDES ITEMS 6, 7-12)	1
3	71505523	U-BOLT,HOPPER (USED ON MODEL 877-10')	2
3	5J915	U-BOLT 1/2-13 X 3-1/4 X 4-9/16 (USED ON MODEL 877-13')	2
3	3J562	U-BOLT 1/2-13 X 5-1/2 X 4-9/16 (USED ON MODEL 877-15')	2
4	1-512-010005-09	NUT,HEX,SLFLKG, 1/2-13 GRB	6
5	254261	MOUNT, RH LED LIGHT	1
6	254262	MOUNT, LH LED LIGHT	1
7	174436	LAMP, AG AMBER SINGLE LED	2
8	1-654-010047-07	SCREW,HX CP 1/4-20UNCX1-1/4G5	8
9	1-512-010005-01	NUT,HEX,SLFLKG GRB 1/4-20	20
10	528934	REFLECTOR - YELLOW	2
11	528933	REFLECTOR - RED	4
12	528938	STRIPE, ORANGE	4
13	164140	REFLECTOR ASSY (INCLUDES ITEMS 14, 11, 12)	2
14	164139	MOUNT, REFLECTOR	2
15	164138	MOUNT, LIGHT TAIL	2
16	141228	U-BOLT 5/8X4X6-1/2	2
17	1-512-010005-13	NUT,HEX SLFLKG GRB 5/8-11	2
18	174437	MODULE, AG FLASHER CONTROL	1
19	1-654-010047-08	SCREW HX CP,1/4-20UNCX1-1/2G5	10
20	174435	LAMP, AG RED SINGLE LED	2
21	174438	HARNESS, MAIN WARNING LIGHTS	1
22	174439	HARNESS, REAR WARNING LIGHTS	1
23	105874	TIE,STRAP PLSTC 21.5-24X.301	15
24	2-054-010461	BAR, WARNING LIGHTS	1
25	108830	BRACKET, MOUNTING, SMV	1
26	1-654-010055-16	SCREW HEX CAP 1/2-13X5-1/2GR5	2
27	224590	MOUNT, SIS DECAL	1
28	70260977	SMV EMBLEM	1
29	224589	DECAL, SIS 20 MILE/H	1
30	1-654-010047-06	SCREW,HX CP 1/4-20UNCX1 GR5	2
31	2-368-010287	HARNESS, STOR-A-WAY (SEE PAGE 2-1)	1

Decals

Decals

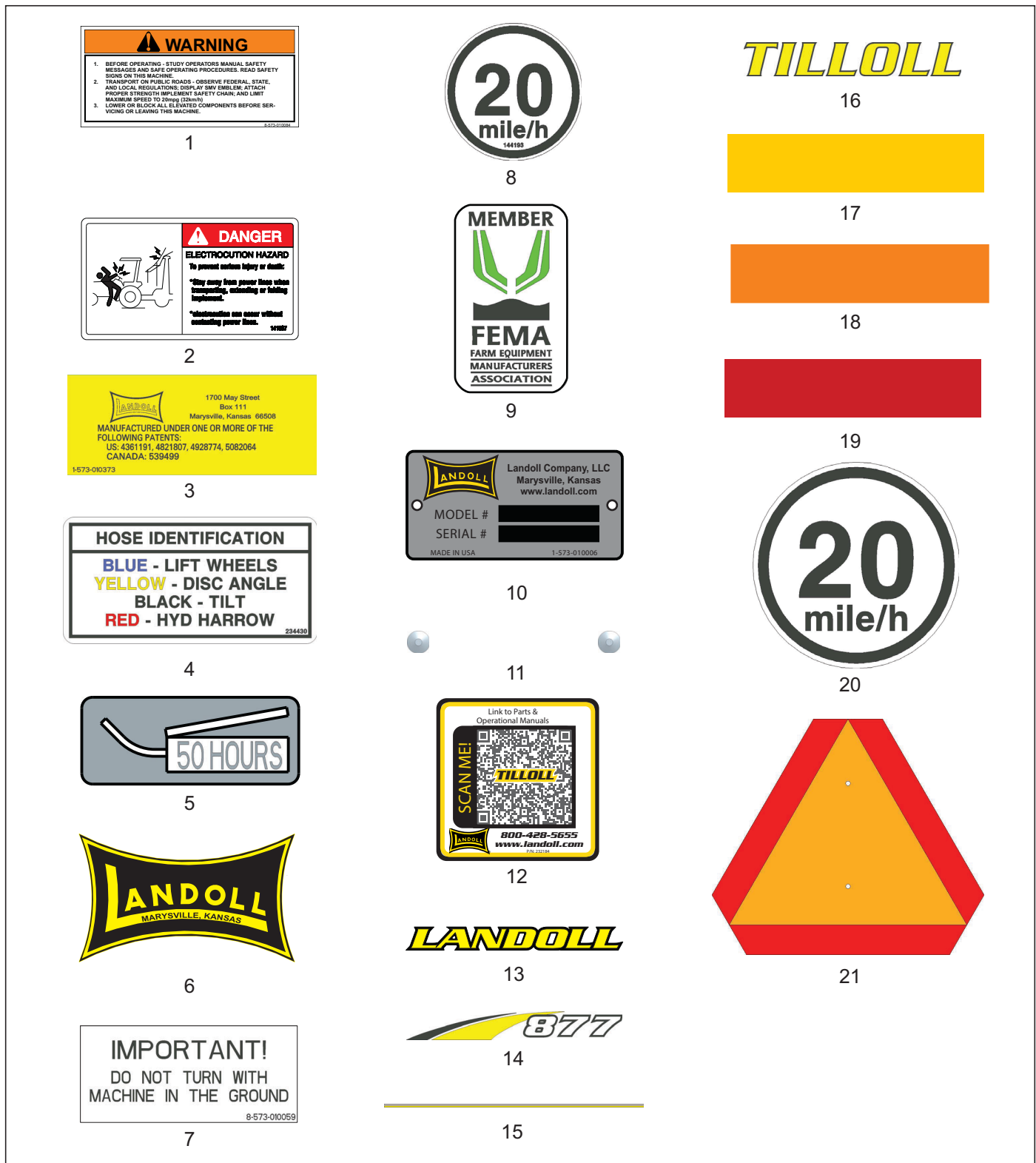


Figure 9-1: Decals (1 of 2)

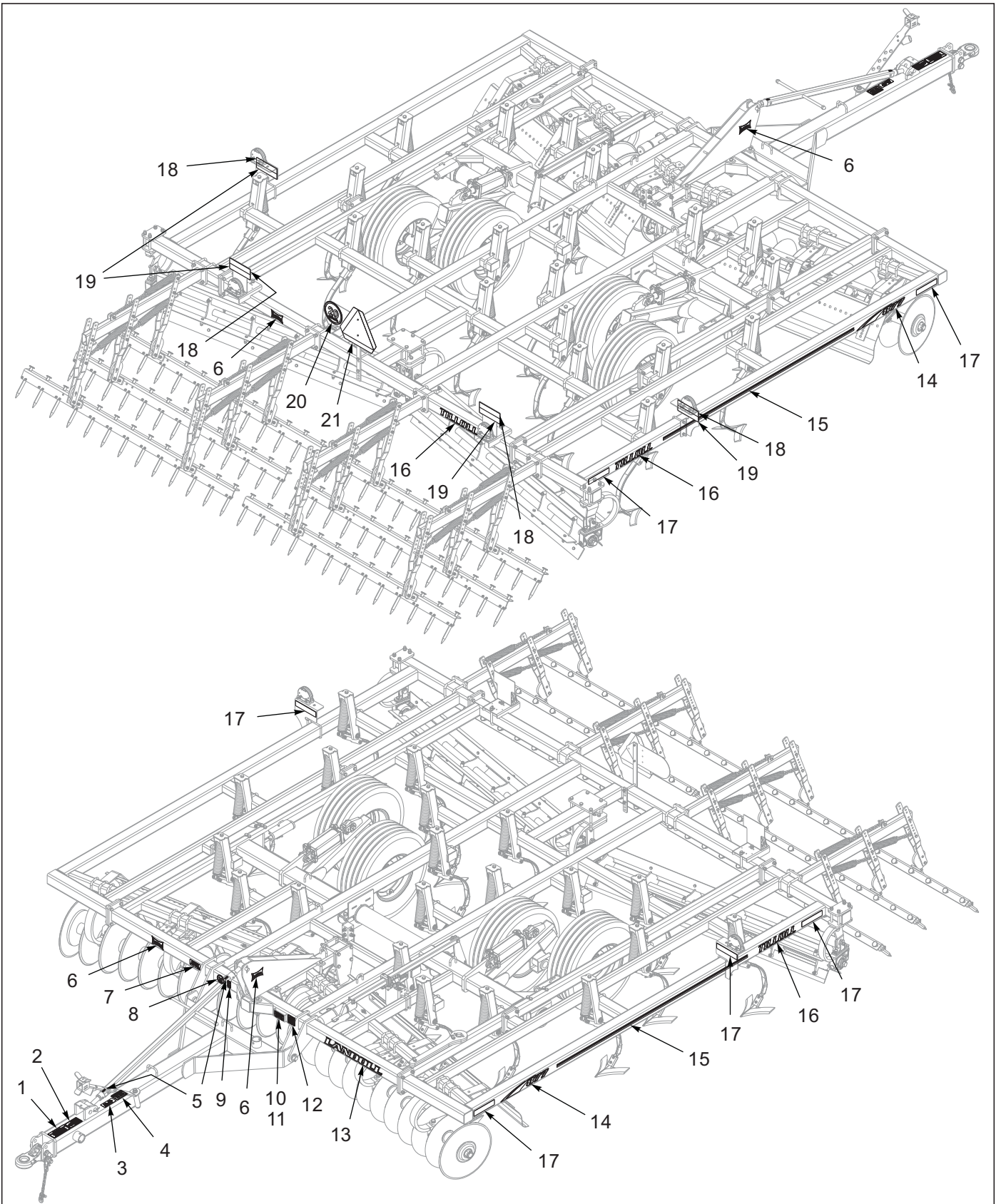


Figure 9-2: Decal (2 of 2)

Decals

ITEM	PART NUMBER	DESCRIPTION	QTY.
1	8-573-010084	DECAL WARNING BEFORE OPERATG	1
2	141597	DECAL, DANGER ELECTROCUTION	1
3	1-573-010373	DECAL, PATENT TILLAGE	1
4	234430	DECAL, HOSE IDENTIFICATION	1
5	2-573-010330-03	DECAL, LUBRICATION 50 HOURS	2
6	141259	DECAL, LANDOLL, YELLOW	4
7	8-573-010059	DECAL IMPORTANT NO TURNING	1
8	144193	DECAL, SIS 20 MPH	1
9	2-573-010198	DECAL, MEMBER FEMA	1
10	1-573-010006	PLACARD, NAME	1
11	156010	RIVET, BLIND .156X1/2 GRIP	2
12	232184	DECAL, QR CODE TILLOLL SERIES	1
13	141260	DECAL, LANDOLL	1
14	218888	DECAL, 877 MODEL	2
15	161515	DECAL, STRIPE 1" X 84"	2
16	218889	DECAL, TILLOLL 2-1/2"	3
17	528934	REFLECTOR - YELLOW	6
18	528938	STRIPE, ORANGE	4
19	528933	REFLECTOR - RED	4
20	224589	DECAL, SIS 20 MILE/H	1
21	70260977	SMV EMBLEM	1

Glossary

For clarity this glossary of industry standard abbreviations and their definitions are provided.

A

ASM Assembly

B

BATT Battery
BHSC Button Head Socket Cap
BLK Black

C

CB Carriage Bolt
CONN Connector
CRG Carriage
CTSK Countersunk
CTWT Counterweight
CVR Cover
CYD Cylinder

D

DBL Double
DIA Diameter

E

ENCLSD Enclosed

F

FHCS Flanged Head Cap Screw
FHHCS Flanged Hex Head Cap Screw
FL OR FLG Flange
FLT Flat

G

GA Gauge

H

HHCS Hex Head Cap Screw
HCS High Carbon Steel
HD Head
HLCL Helical
HCSKT Hex Socket
HSFC Hex Socket Flat Countersunk
HYD Hydraulic

I

ID Inside Diameter

L

LH Lefthand
LKG OR LOCK Locking
LWR Lower

M

MANF Manifold
MNT Mount

N

NRW Narrow

 ----- Not Serviced Separately

O

OD Outside Diameter
OHG Overhead Guard
ORFS OR ORS O-Ring Seal
ORP OR ORB O-Ring Boss

P

P-STEER Power Steering
PTFE Polytetrafluoroethylene (Teflon)

R

RH Righthand
RND Round

S

SER Series
SHCS Socket Head Cap Screw
SHLD Shield
SKT Socket
SLFLKG Selflocking
SOC Socket
SPDT Single Pole Double Throw
SPR Spring
SQ Square
SRTD Serrated
SSCR Setscrew
SST Stainless Steel
STD Standard

U

UPR Upper

W

WHL Wheel
WLD OR WLDMT Weldment

Index

Numerics

0600-250-01250	2-2	1403982	6-2
0800-0500-02000	5-8	140473	3-7
100214	2-6	140475	3-7
100695	2-2	140476	3-7
1-007-010025	6-2	140479	3-2
100823	2-2	140480	3-2
100844	2-6	140487	3-2
101988	1-2	140515	1-8
102498	1-10	140519	1-2
102604	1-10	140547	1-2
103841	2-2	140551	1-8
104358	1-2	140552	1-8
105-0093	1-2	140553	1-8
105874	8-4	140554	1-10
1-065-010013	5-6	140645	1-10
107-0018	5-4	140647	2-2, 2-3
1-076-010007	1-10	141196	1-2
1-076-010010	1-10	141228	8-4
108628	1-7	141234	1-2
108830	8-4	141236	1-10
1-116-010019	1-2	141238	1-10
111789	7-1	141246	2-2
122917	1-7	141247	2-2
123096	1-2, 4-3	141249	2-2
1-298-010001-1	1-8, 2-2, 2-6, 5-6	141250	2-3
133662	4-2	141259	9-3
135439	5-4	141260	9-3
135442	5-4	141433	2-2
135443	5-4	141597	9-3
136509	5-4	141807	2-2
136510	5-4	141809	1-2
137943	5-6	141828	6-2
1-397-010369054	6-2	141866	1-10
		142112	7-1
		142114	7-1

142194	2-3	161515	9-3
142650	1-2	161550	2-6
143066	1-10	162906	4-2
143994	7-1	1-630-010021-03	1-7
144048	1-7	164124	1-2
144193	9-3	164138	8-4
144213	1-2, 1-8	164139	8-4
147376	7-1	164140	8-4
148387	1-2, 6-2, 7-1	164146	4-2
149858	7-1	164147	4-2
151029	5-8	164192	4-2
1-511-010001-07	4-2	164349	1-10
1-512-010005-01	2-2, 8-4	164352	1-2, 1-10
1-512-010005-03	1-2, 1-7	1-647-010004257	2-2, 3-2
1-512-010005-05	1-2, 5-8	164861	5-4
1-512-010005-09	1-2, 3-2, 4-2, 5-6, 5-8, 8-4	165257	1-2
1-512-010005-13	1-2, 1-6, 2-2, 3-2, 3-6, 4-3, 5-4, 5-8, 8-4	165258	1-7
1-512-010005-15	1-2	165259	1-7
1-512-010005-19	2-2	165260	1-7
1-512-010007-07	2-2	165265	1-2
1-512-010007-08	4-2, 4-3	1-654-010032-09	3-2
1-512-010008-12	2-6	1-654-010047-06	2-2, 8-4
1-512-010011-19	2-2	1-654-010047-07	8-4
1-516-010001-20	1-2, 1-10	1-654-010047-08	8-4
1-516-010001-27	3-2	1-654-010049-19	1-2
152640	7-1	1-654-010051-06	1-2
1-533-010001	1-3	1-654-010055-03	5-8
155528	6-2	1-654-010055-05	3-2, 5-6
1-557-010362-40	5-8	1-654-010055-07	5-8
1-557-010362-51	1-2, 1-10	1-654-010055-11	1-2
1-557-010362-63	2-2	1-654-010055-13	5-8
1-557-010403	1-2	1-654-010055-16	8-4
156010	9-3	1-654-010059-05	1-6
156949	2-6	1-654-010059-07	1-2, 5-4
1-573-010006	9-3	1-654-010059-08	5-4
1-573-010373	9-3	1-654-010059-11	5-4
160161	3-2	1-654-010059-16	1-2
		1-654-010059-17	2-2

1-654-010059-21	5-4	186237	6-2
1-654-010061-05	1-2	189453	2-6
1-654-010061-19	2-2	189454	2-6
1-654-010070-02	3-2	189467	2-6
1-654-010087-16	2-6	189468	2-6
1-654-010125-21	2-2	192890	1-2
1-654-010126-15	4-3	202702-8-8S	6-2
166160	4-2	204384	1-2
166717	1-7	2-054-010461	8-4
167555	6-2	2062-8-8S	6-2
172509	3-2	208813	6-2
172667	4-2	210606	1-2, 1-10
172671	4-2	216129	3-2
172672	4-2	216130	3-2, 3-4
174435	8-4	216134	3-2, 3-4
174436	8-4	216135	3-2, 3-4
174437	8-4	218872	5-2, 5-4, 5-6
174438	8-4	218873	5-4, 5-6
174439	8-4	218888	9-3
174708	1-7	218889	9-3
174709	1-7	218893	5-6
177030	2-6	218894	5-6
177031	2-2, 2-6	218899	5-6
177032	2-6	218900	5-6
179655	1-2	218901	5-6
179768	3-2, 3-4	218902	5-6
179770	3-2, 3-4	218904	5-4
179771	3-2, 3-4	218907	5-4
185660	1-2, 6-2	218908	3-6
1-861-010005	1-2	218910	3-6
1-861-010006	3-2, 3-4	2-217-010031	3-2, 3-4
1-861-010032-13	4-2, 4-3	2-217-010033	1-3
1-861-010032-14	3-2	224589	8-4, 9-3
1-861-010032-19	4-2	224590	8-4
1-861-010032-24	2-2	225531	1-2
1-861-010034-12	4-2, 4-3	225532	1-2, 1-7
1-861-010034-17	3-2	225533	1-7
1-861-010034-21	5-6	225540	1-2, 4-2

225541	4-2	254261	8-4
225542	4-2	254262	8-4
225543	4-2	254263	4-3
225544	4-2	2-557-010006	2-2
229555	1-2, 4-2	2-557-010054	2-2
229587	5-8	2-565-010062	4-3
231777	1-2	25671	1-6
232184	9-3	256712	3-2, 3-4
234430	9-3	256713	1-6
2-360-010015	2-2	256726	3-2, 3-4
2-368-010287	2-2, 8-4	256730	3-6
237196	4-3	256731	3-2, 3-4
237197	4-3	256735	5-4
2-375-010601	2-6	2-573-010198	9-3
2-375-010602	2-6	2-573-010330-01	5-4
241001	3-7	2-573-010330-03	9-3
241002	3-2, 3-7	2-654-010002	2-2
241003	3-2, 3-4	2-654-010003	2-2
241004	3-2, 3-4	2-683-010079	4-2
241005	3-2, 3-6	2-689-010057	4-2, 4-3
241006	3-2, 3-4	29SFFL 5811	1-2, 4-2, 4-3
241007	3-2, 3-4	3J562	8-4
2-474-010022	1-2, 6-2	415	1-2
247576	4-3	5000	1-10, 3-7
254213	5-4, 5-6	500171	2-3
254215	5-6	528933	8-4, 9-3
254220	3-2, 3-4	528934	8-4, 9-3
254224	1-2	528938	8-4, 9-3
254225	1-6	5J915	1-2, 8-4
254226	1-6	6-102-010009	5-8
254227	1-2	7/16-14X1-1/2PW	4-2, 4-3
254228	2-2	70260977	8-4, 9-3
254229	2-2	71505523	8-4
254230	1-2, 4-3	8-102-010017	5-8
254231	8-4	8-102-010020	5-4
254258	3-2, 3-4	8-102-010023	3-6
254259	8-4	8-102-010043	3-2, 3-6
254260	8-4	8-217-010070	2-2

8-253-010002	3-2, 3-4
8-253-010007	3-2
8-253-010010	3-2
8-253-010012	3-2, 3-4
8-253-010022	3-2, 3-4
8-253-010049	3-2
8-253-010050	3-2
8-370-010001	5-8
8-370-010007	5-8
8-370-010008	5-8
8-370-010012	5-2, 5-8
8-557-010114	2-2
8-573-010059	9-3
8-573-010084	9-3
8-622-010003	5-4
8-622-010012	5-6
8-622-010016	5-6
8-630-010001	5-6
8-681-010008	3-6
8-681-010009	3-6
8-681-010010	3-6
8-681-010011	3-6
8-683-010023	5-4
8-689-010009	4-2
8-720-010011	5-8
8-861-010008	5-6
8-861-010009	5-6
8-861-010021	2-2

F

F-1186-2605	1-1
-------------------	-----

R

RRT128X.75	5-8
RRT159	5-4

Instructions for Ordering Parts

**** Repair parts must be ordered through an Authorized Dealer ****

DEALER INSTRUCTIONS FOR ORDERING PARTS FROM LANDOLL PARTS DISTRIBUTION CENTER

Phone #: 800-423-4320 or 785-562-5381

Fax #: 888-527-3909

Order online: dealer.landoll.com

SERIAL NUMBER PLATE

The Serial Number Plate, which lists the model number and serial number, is located on the front of the frame
See Figure 1-1.

SERIAL NUMBER NOMENCLATURE

The following information will help decode the 877 Rigid Tilloll serial number

01H2500100 = xxmysssss

The Tilloll series QR code decal, may be scanned to link to the most current manuals, located on the front of the frame *See Figure 1-1.*

xx	= model series (i.e. 01 for Tilloll)
m	= month of manufacture (ex. "H" means October. The letter I is not used.)
yy	= year manufactured (ex. "25" means 2025)
sssss	= Sequential number used to track warranty and service information.

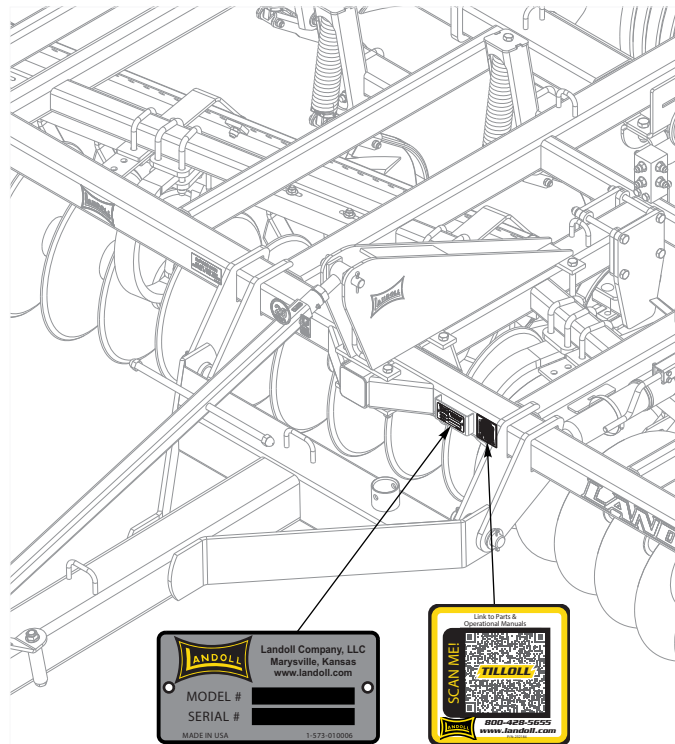


Figure 1-1: Serial Number Plate and QR Code Decal Location

Manuals for 877 Rigid Tilloll

Manual Number	Manual Type
F-1185	Operator's Manual
F-1186	Parts Manual

Document Control Revision Log:

Date	Form #	Improvement(s): Description and Comments
03/05/2025	F-1186	New Manual
04/11/2025	F-1186-2504	Initial Release
05/20/2026	F-1186-2605	Added models 877-10' and 877-13'



intertek

Equipment from Landoll Company, LLC is built to exacting standards ensured by ISO 9001:2015 registration at all Landoll manufacturing facilities.

Model 877 Rigid Tilloll Parts Manual Re-Order Part Number F-1186

LANDOLL COMPANY, LLC

1900 North Street

Marysville, Kansas 66508

(785) 562-5381

800-428-5655 ~ WWW.LANDOLL.COM



Copyright 2026. Landoll Company, LLC

“All rights reserved, including the right to reproduce this material or portions thereof in any form.”

